

Essential Question:

Where are the major physical features and nations of Africa located?



Standards:

SS7G1a. Locate on a world and regional political-physical map: the Sahara, Sahel, savanna, tropical rain forest, Congo River, Niger River, Nile River, Lake Tanganyika, Lake Victoria, Atlas Mountains, and Kalahari Desert.

SS7G1b. Locate on a world and regional political-physical map the countries of Democratic Republic of the Congo (Zaire), Egypt, Kenya, Nigeria, South Africa, Sudan,

AFRICA Satellite Map

cartography - www.mapland.co.za

NORTH
ATLANTIC
OCEAN

Tropic of Cancer

20°N

10°N

Equator

0°N

SOUTH
ATLANTIC
OCEAN

10°S

20°S

Tropic of Capricorn

Africa

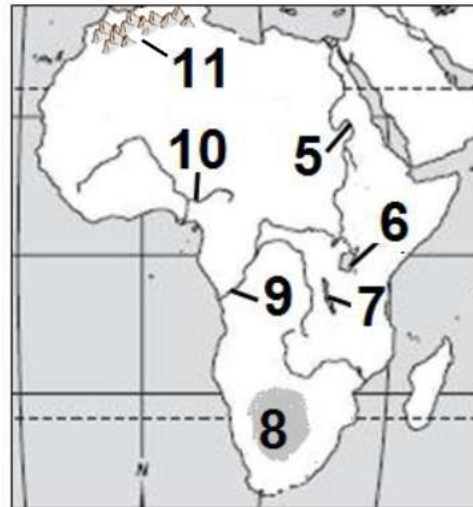
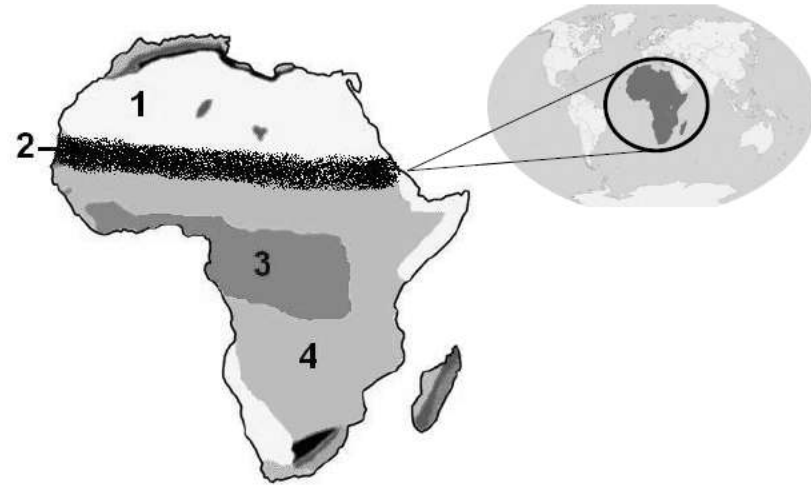


Use the Africa Physical Features Map

Africa Physical Features

Name _____ Date _____ Period _____

Feature	Description
1.	
2.	
3.	
4.	
5.	
6.	
7.	
8.	
9.	
10.	
11.	



Sahara Desert

1.





Sahara Desert:

World's largest, hot desert,
covering most of Northern

Africa

Sahel



2.

Sahel:

Transition zone south of the Sahara;
separates Sahara from tropical rain
forests



Tropical Rain Forest



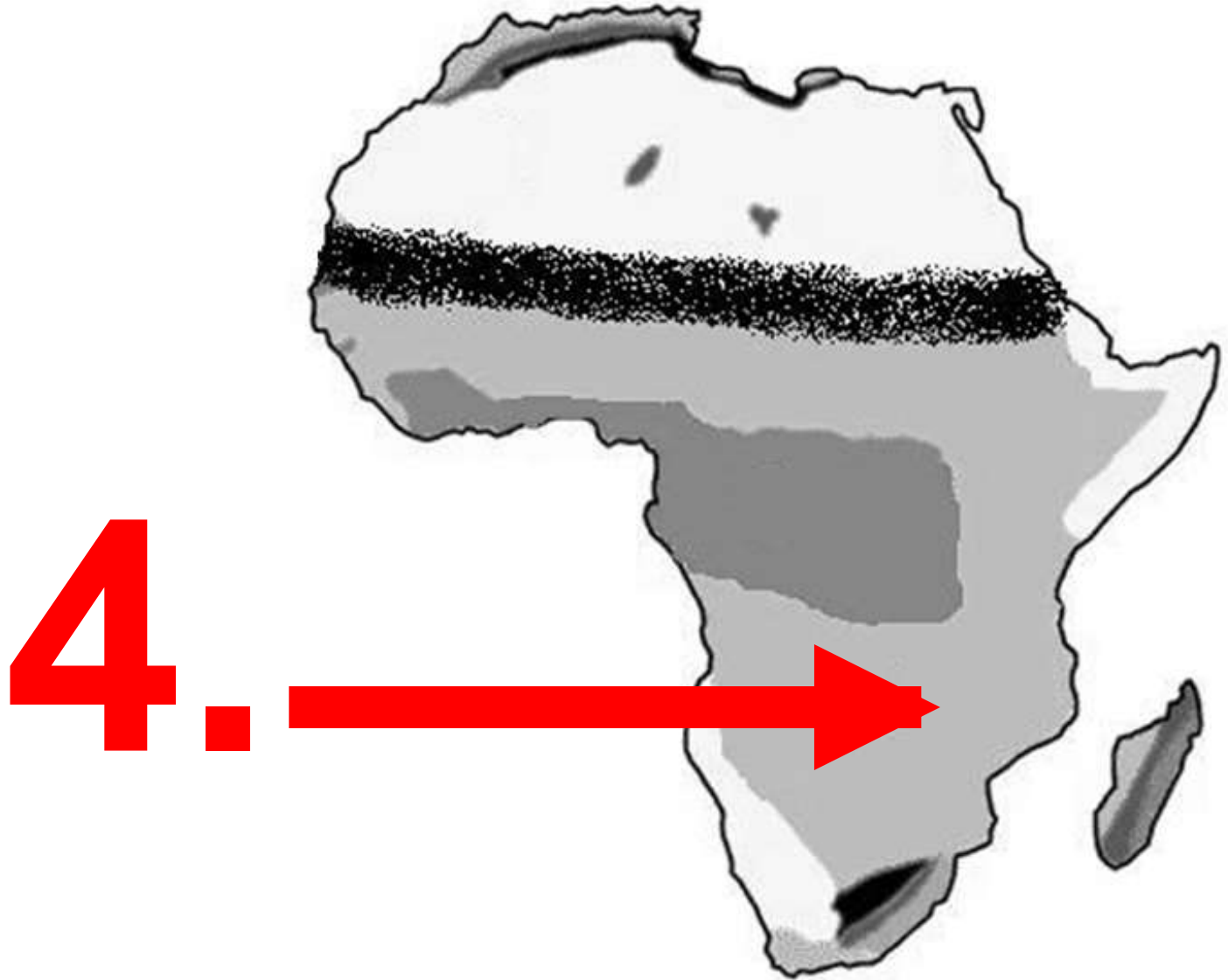
3.

Tropical Rain Forest:

Central African tropical rainforest is the second largest in the world



Savanna



Savanna:

Rolling grassland and
scattered
trees and shrubs



Nile River

5.

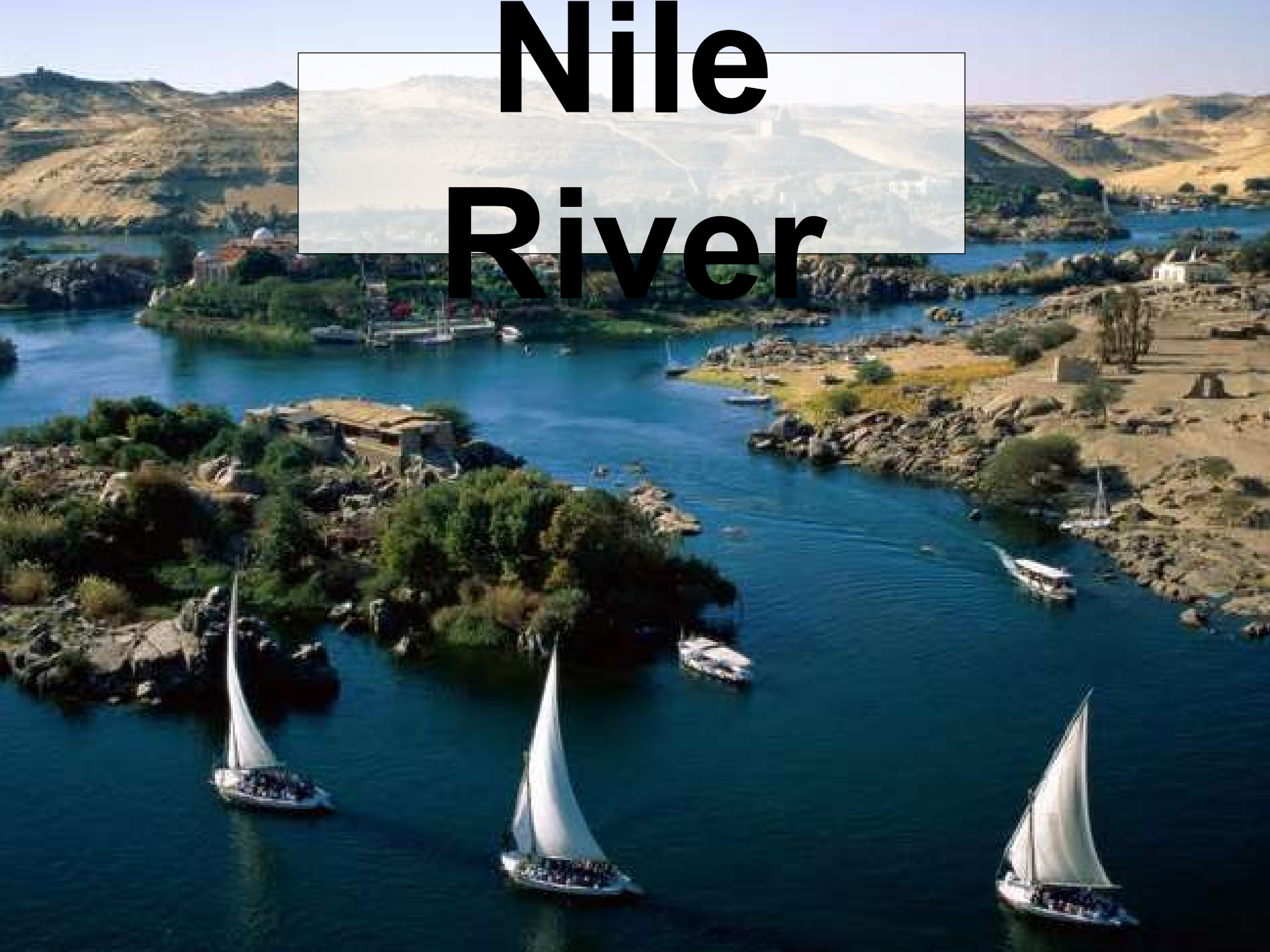


Nile River:

World's longest river; flows northward into the Mediterranean Sea



Nile River



Lake Victoria

6.





Lake Victoria:

Reservoir for the Nile River;
largest lake in Africa; 2nd largest
freshwater lake in the world

Lake Tanganyika

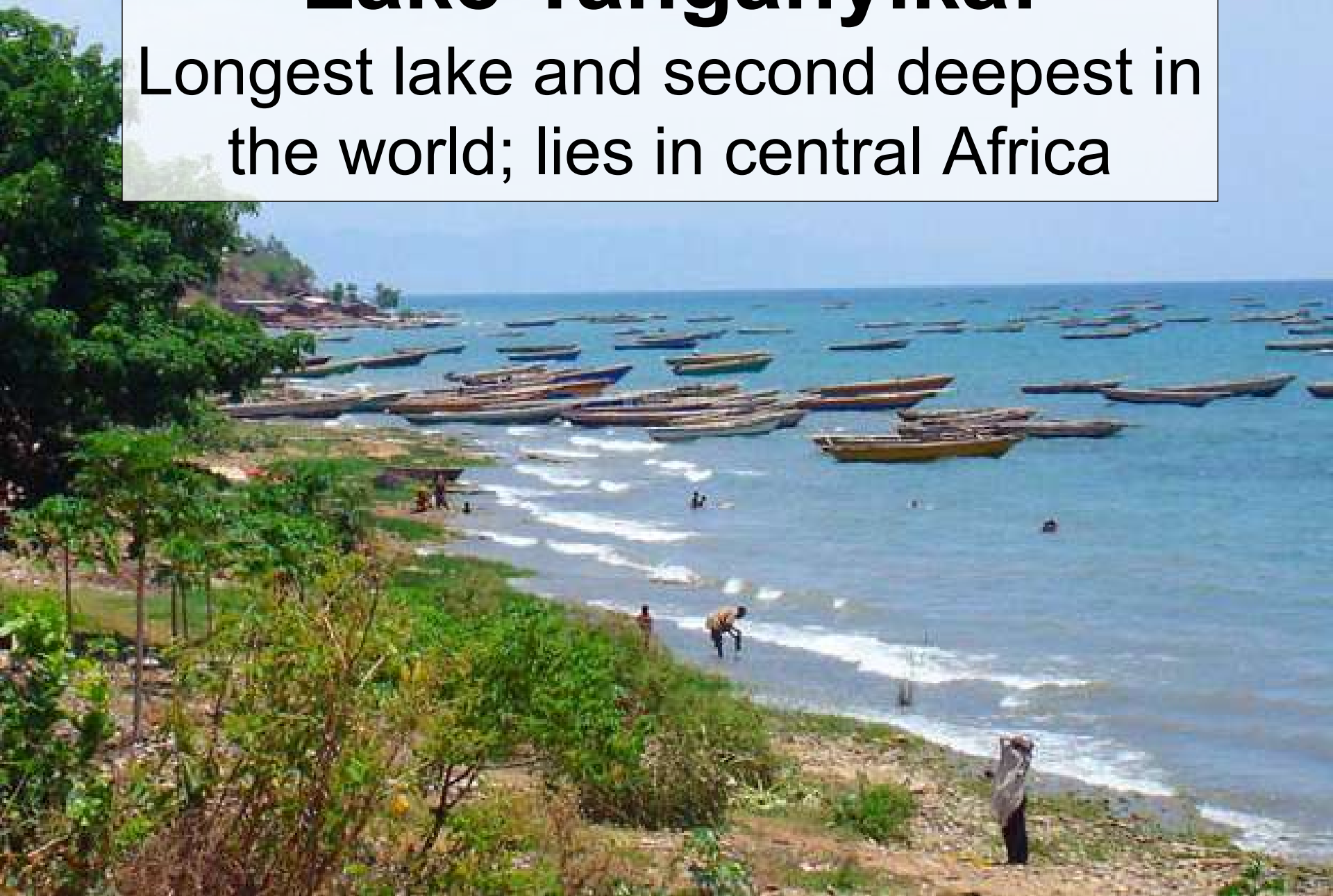
7.

■



Lake Tanganyika:

Longest lake and second deepest in the world; lies in central Africa



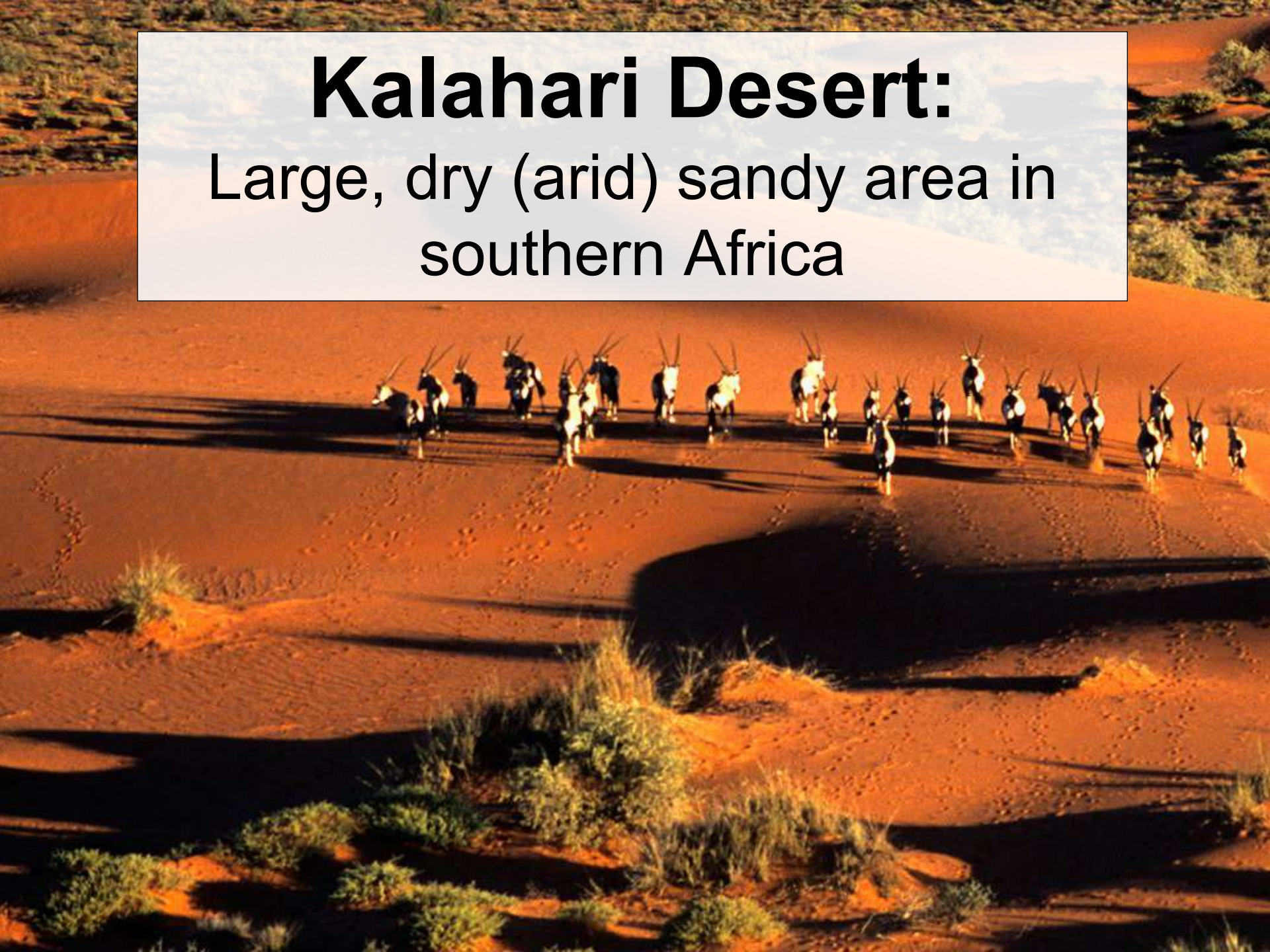
Kalahari Desert



8.

Kalahari Desert:

Large, dry (arid) sandy area in southern Africa



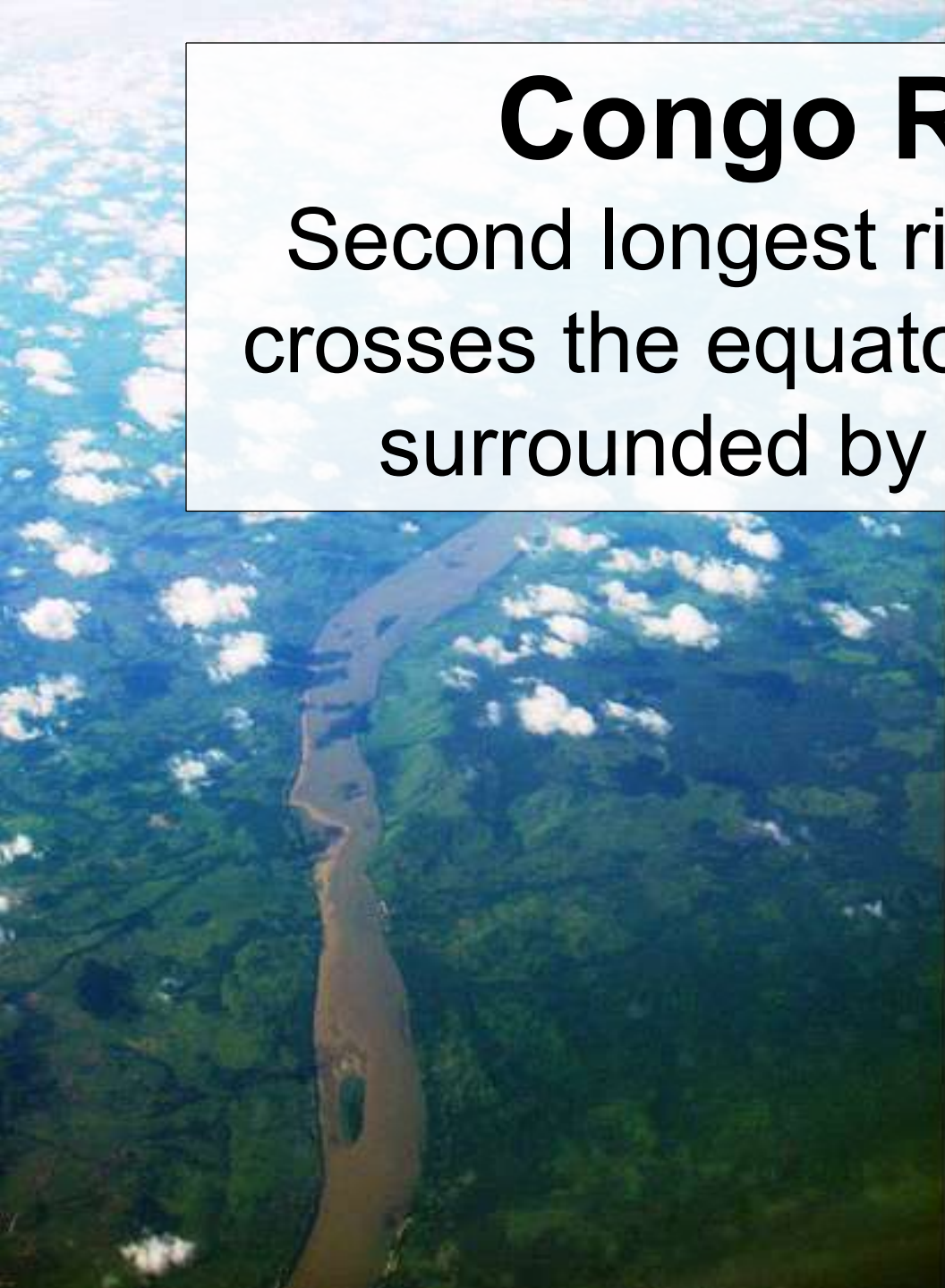
Congo River



9.

Congo River:

Second longest river in Africa;
crosses the equator twice and is
surrounded by rain forest



Niger River



10.

Niger River:

Main river in western Africa; five African nations depend on it for water; flows into the Atlantic



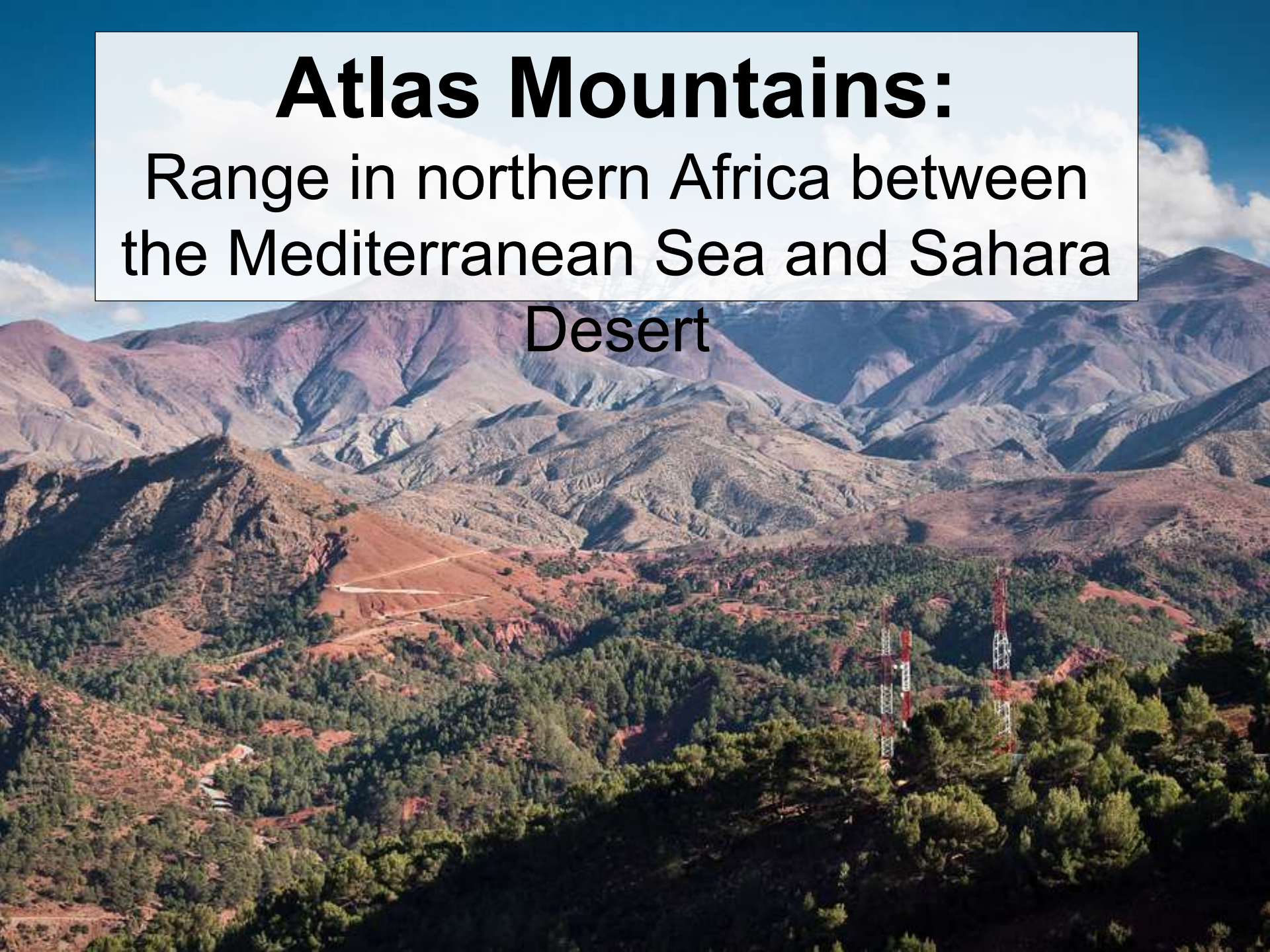
Atlas Mountains



11.

Atlas Mountains:

Range in northern Africa between
the Mediterranean Sea and Sahara
Desert





Egypt
t

Egypt



Suda

n





Suda

n

South Sudan



South Sudan





Nigeri

a

Nigeri

a





Kenya
a

A herd of African elephants is gathered in a lush green savanna. In the background, the snow-capped peak of Mount Kenya rises against a clear blue sky. The elephants are of various sizes, including a small calf. The scene is brightly lit, suggesting a sunny day.

Keny

a

Democratic Republic of Congo (Zaire)

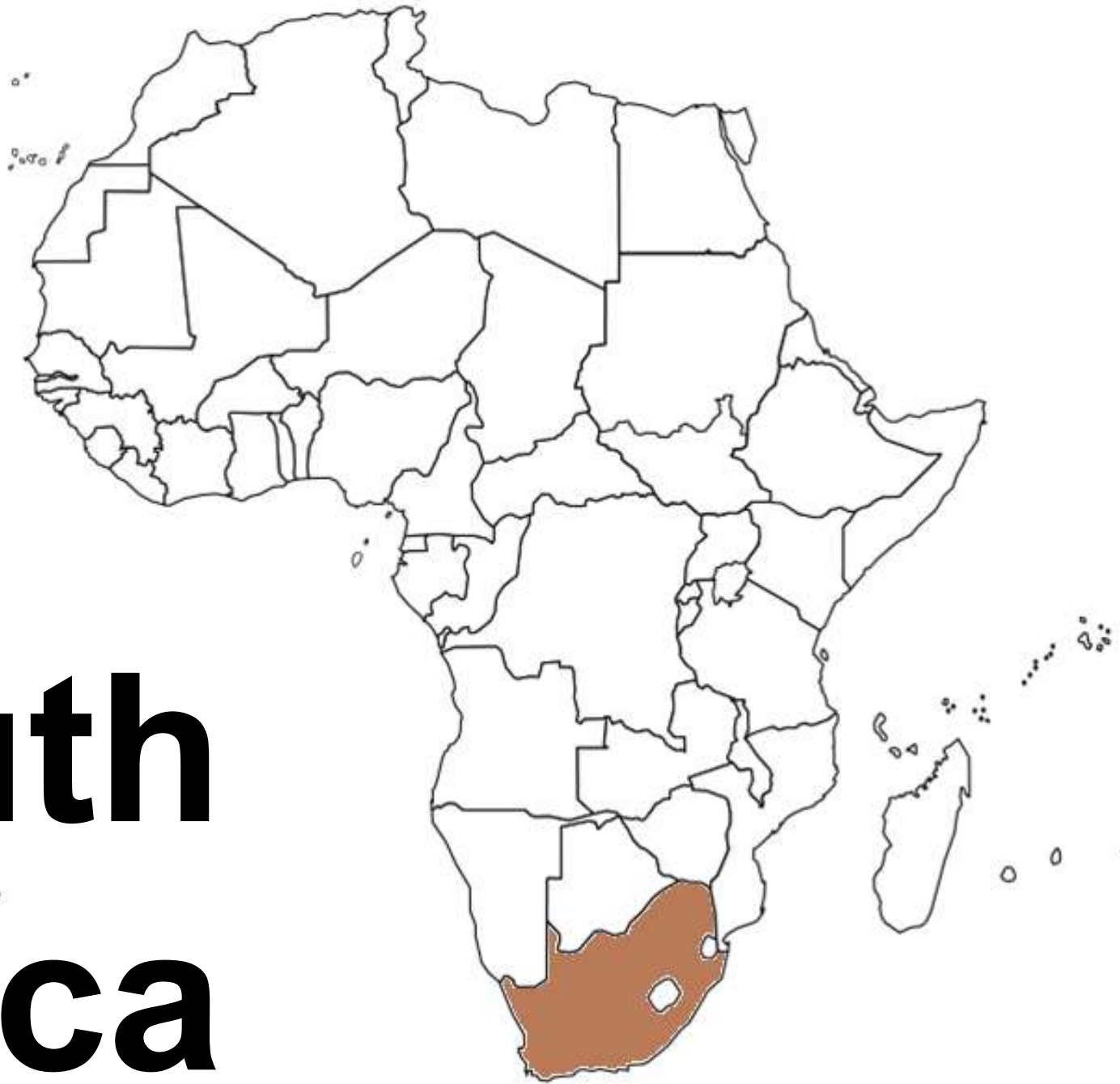




**Democratic Republic
of**

Congo (Zaire)

South Africa





South Africa