



ACHIEVEMENT GAP IN CCSD:
TRANSFORMING FROM
APATHY TO PERSEVERANCE

TABLE OF CONTENTS

INTRODUCTION 2

COMMUNITY SNAPSHOT..... 3

2019 MILESTONES 5

PROFILE OF A CCSD GRADUATE 40

INDICATORS OF COLLEGE & CAREER SUCCESS 41

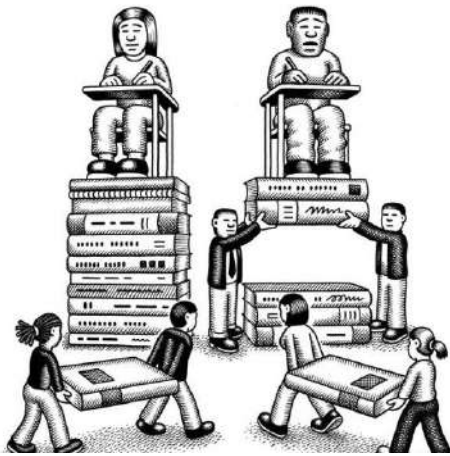
TRANSFORMATION 66

INTRODUCTION

In terms of performance, the Clarke County School District is ranked among the bottom one-third to the bottom one-quarter of the 180 Georgia school districts. Specifically, certain student groups are achieving woefully behind their counterparts within the district. There are schools in our district that have 70 percent achievement gaps among student groups. We have students who have been identified as academically gifted not reaching the state standard of “proficient” on the Georgia Milestones. In short, CCSD’s academic performance is in a state of crisis.

In pointing out these facts, we do not blame or hold responsible any one stakeholder group. The reality is that regardless of how or why we arrived at this current situation, we can no longer fixate on the societal circumstances that placed us in this position of professional and civic responsibility. We must partner with a tremendous level of intensity and urgency.

The purpose of this report is to highlight our academic status as of August 2019. More importantly, we share the transformation strategies we are implementing to increase academic achievement for all students.



- **Achievement** in the Clarke County School District is **low**. Only **one-third** of our students were proficient last school year.
- **Racial achievement gaps**, especially between African American and White students, across grade levels and subject areas, are double those of the state.
- Typically, **African American students are 3.4-grade levels behind White students in CCSD**.

The first act in change leadership is to create a sense of urgency regarding what needs to change (Kotter 1996). It is clear that we need to change the academic achievement trajectory for all students in CCSD. The continued existence of achievement gaps is indisputably a condition that demands change (Duke 2010). It will require professional and civic perseverance to change the current system to successfully support all our students.

COMMUNITY SNAPSHOT

Athens-Clarke County is a racially diverse community. The various racial groups in ACC makes this community truly a unique melting pot of cultures and backgrounds. While this diversity gives us great strength, the economic disparities in the community are extreme.

While counselors, social workers, and other social-emotional staff can mitigate the sting of poverty, the path out of the situation is academic achievement. This achievement is spurred on through high-quality instruction from socially conscious instructors. As leading educational researcher Gloria Ladson Billings (2006) proposes when our education policies drive interventions that are sufficiently powerful to overcome the effects of concentrated disadvantage on child development and learning, we will begin to address the long-standing debt owed to America's economically disadvantaged children.

Community Demographics

	ACC Demographics (Total)	ACC Demographics (Not Including College Students)
White	55%	49%
Black	28%	33%
Hispanic	11%	13%
Asian	4%	3%
Two or More Races	2%	2%

Clarke County School District Demographics

	CCSD Demographics
White	21%
Black	49%
Hispanic	24%
Asian	2%
Two or More Races	4%

Poverty in Athens-Clarke County

- ACC's poverty rate, at 28 percent, is **double** the national average.
- The estimated poverty rate for ACC in 2007 was 18.3 percent, which means the poverty rate increased 10 percentage points (or 55 percent growth) over the past eight years.
- Poverty among African American families is almost 50 percent, with 45 percent of Hispanic families living in poverty. For White families, the poverty rate is 11 percent.
- In ACC, 57.4 percent of African American households and 63.5 percent of Hispanic households do not earn a living wage.
- Child poverty in Athens-Clarke County is over 40 percent. The poverty rate for African American children is 56 percent.

Family Income in Past 12 Months (In 2016 Inflation-Adjusted) for Athens-Clarke County; State of Georgia; and United States					
- Family income level used to accurately reflect income status without including large college student population in Athens-Clarke County.					
		All Families	African American Families	White Families	Hispanic Families
Athens-Clarke County	Median Household Income	\$54,916	\$30,700	\$86,260	\$34,268
	%LowerIncome(<\$30k)	28%	49%	12%	39%
	%MiddleIncome(\$30k-\$75k)	33%	28%	32%	46%
	%UpperIncome(>\$75k)	39%	23%	56%	15%
Georgia	Median Household Income	\$65,018	\$49,004	\$76,294	\$46,235
	%LowerIncome(<\$30k)	21%	31%	14%	31%
	%MiddleIncome(\$30k-\$75k)	37%	39%	35%	44%
	%UpperIncome(>\$75k)	43%	30%	51%	26%
United States	Median Household Income	\$71,062	\$47,056	\$80,289	\$49,539
	%LowerIncome(<\$30k)	18%	32%	13%	28%
	%MiddleIncome(\$30k-\$75k)	35%	38%	34%	41%
	%UpperIncome(>\$75k)	47%	30%	54%	30%

According to economic mobility data from the Equity Policy Institute:

- 40 percent of children born into a household in Athens making \$20,000 or less per year will not earn more than their parents/guardians.
- **Three out of four (75 percent) children born into a household in Athens making \$20,000 or less per year will not earn a living wage in their lifetime.**

We can address intergenerational poverty by providing our students with high quality resources and instruction.

2019 GEORGIA MILESTONES RESULTS

Overall, CCSD lags behind the state in all but one tested area: eighth-grade students taking Coordinate Algebra EOC. The district performed 10 points or more behind the state average in 19 of 24 Milestones tests. Only about one-third of all students are proficient in the district. The performance of CCSD as a whole is unacceptable.

CCSD's student performance on the 2019 Georgia Milestones clearly reflects the wide disparities among our student groups. Our White students outperformed their White counterparts across the state, while both African American and special education students from CCSD performed well below the state average and below their student group counterparts statewide.

In examining the achievement gaps within individual schools, the data reveals that we have a significant achievement gap at all schools. In short, our students all may enter the same school door, but once inside, they experience very different academic journeys and levels of success.

Realizing the demographic and economic context of the community in which the students of Clarke County are situated, it is imperative for educators to focus on the control they have in ensuring an increase in student achievement. This comes down to *improving instructional delivery*.



Clarke County School District consistently ranks in the bottom one-third when it comes to Milestones results in the state of Georgia.

Clarke County School District / Superintendent: Dr. Demond Means

Indicator	Sub-Indicator	State Overall	CCSD Overall	State Female	CCSD Female	State Male	CCSD Male	State White Std	CCSD White Std	State Asian Std	CCSD Asian Std	State African American Std	CCSD African American Std	State Hispanic Std	CCSD Hispanic Std	State Multi-Racial Std	CCSD Multi-Racial Std	State English Learner Std	CCSD English Learner Std	State Special Education Std	CCSD Special Education Std
1. English Language Arts EOG	3rd Grade	42%	31%	46%	34%	38%	29%	56%	65%	69%	-%	27%	15%	31%	29%	50%	34%	20%	18%	16%	7%
	4th Grade	43%	35%	48%	40%	37%	30%	56%	70%	73%	44%	28%	16%	35%	38%	48%	42%	19%	24%	14%	5%
	5th Grade	45%	35%	51%	38%	40%	31%	59%	78%	74%	43%	31%	18%	36%	30%	53%	35%	10%	6%	13%	9%
	Grades 3-5	43%	34%	48%	38%	38%	30%	57%	71%	72%	49%	29%	17%	34%	33%	50%	37%	17%	15%	14%	9%
	6th Grade	46%	33%	52%	41%	40%	27%	60%	69%	77%	48%	32%	18%	38%	36%	54%	50%	6%	0%	11%	9%
	7th Grade	39%	27%	45%	31%	33%	22%	52%	72%	70%	39%	25%	11%	29%	22%	44%	32%	4%	3%	8%	3%
	8th Grade	47%	34%	55%	41%	40%	27%	61%	76%	75%	47%	34%	20%	37%	29%	54%	44%	4%	0%	11%	12%
	Grades 6-8	44%	31%	48%	37%	38%	25%	58%	72%	65%	46%	30%	17%	35%	29%	51%	42%	5%	2%	10%	8%
2. English Language Arts EOC	9th Grade Literature	49%	46%	56%	51%	42%	41%	63%	86%	75%	62%	34%	30%	41%	42%	56%	52%	5%	13%	11%	15%
	American Literature	45%	35%	50%	36%	41%	34%	61%	81%	70%	80%	29%	17%	37%	36%	53%	42%	4%	3%	10%	11%
3. Math EOG	3rd Grade	52%	41%	51%	39%	52%	42%	66%	71%	82%	85%	35%	23%	45%	44%	58%	38%	38%	39%	25%	11%
	4th Grade	50%	39%	47%	36%	51%	41%	65%	71%	83%	71%	31%	19%	44%	43%	55%	51%	33%	32%	21%	12%
	5th Grade	40%	30%	40%	30%	42%	31%	55%	70%	79%	81%	24%	12%	34%	27%	47%	26%	16%	16%	13%	10%
	Grades 3-5	47%	37%	47%	35%	48%	38%	62%	71%	81%	81%	30%	19%	41%	37%	53%	39%	31%	28%	19%	12%
	6th Grade	39%	27%	41%	30%	38%	23%	54%	59%	79%	76%	22%	11%	33%	31%	45%	38%	11%	12%	11%	7%
	7th Grade	43%	30%	44%	28%	42%	31%	59%	73%	78%	61%	24%	12%	36%	31%	47%	36%	12%	3%	11%	6%
	8th Grade	35%	25%	37%	27%	32%	23%	49%	43%	61%	-%	22%	17%	29%	26%	39%	46%	11%	0%	10%	7%
	Grades 6-8	39%	27%	41%	29%	39%	26%	54%	61%	75%	63%	23%	13%	33%	29%	44%	36%	29%	5%	11%	7%
4. Math EOC	Coordinate Algebra (8th Grade Only)	80%	97%	79%	94%	82%	100%	87%	100%	92%	100%	62%	83%	77%	100%	77%	100%	-%	-%	79%	-%
	Coordinate Algebra (HS only)	26%	23%	28%	25%	24%	22%	47%	62%	41%	40%	15%	10%	22%	23%	33%	30%	8%	4%	6%	6%
	Analytic Geometry (HS only)	34%	30%	35%	33%	34%	27%	56%	60%	56%	77%	19%	17%	30%	29%	42%	32%	11%	8%	8%	5%
5. Science EOG	5th Grade	43%	32%	43%	32%	42%	31%	59%	75%	74%	34%	26%	14%	36%	28%	51%	26%	14%	5%	18%	11%
	8th Grade	32%	8%	32%	7%	33%	8%	46%	17%	56%	-%	21%	6%	24%	9%	38%	-%	7%	0%	10%	2%
6. Science EOC	Physical Science (8th Grade Only)	64%	54%	60%	48%	67%	62%	72%	74%	83%	89%	48%	31%	47%	55%	68%	60%	12%	-%	25%	57%
	Physical Science (HS only)	27%	14%	25%	10%	29%	17%	40%	23%	43%	-%	15%	10%	22%	18%	30%	23%	6%	0%	8%	5%
	Biology (HS only)	48%	29%	49%	29%	47%	28%	63%	74%	77%	40%	30%	14%	39%	22%	54%	39%	10%	5%	13%	10%
7. Social Studies EOG	5th Grade	30%	21%	28%	19%	33%	21%	43%	61%	63%	29%	17%	7%	23%	11%	37%	23%	6%	0%	11%	9%
	8th Grade	41%	24%	40%	24%	41%	24%	54%	65%	72%	48%	25%	11%	32%	19%	45%	29%	5%	3%	12%	12%
8. Social Studies EOC	U.S. History	46%	34%	43%	29%	49%	40%	60%	80%	72%	88%	30%	15%	40%	34%	53%	45%	9%	8%	17%	15%
	Economics	48%	31%	46%	28%	51%	35%	62%	70%	73%	79%	32%	14%	40%	30%	53%	35%	10%	3%	15%	7%

The Georgia Milestones Assessment System is a comprehensive assessment program spanning grades 3 through high school. Georgia Milestones measure how well students have learned the knowledge and skills outlined in the state-adopted content standards in English Language Arts, mathematics, science, and social studies. In order to put CCSD data in context, comparisons to the state are provided for each subject and grade. For school-level EOG data, data aggregation by level is used to provide statistically reliable comparisons to the state. Boxes shaded green are at or above state averages; boxes shaded yellow are below state averages within 10 points; and boxes shaded red are below state averages above 10 points. In addition, student groups with less than 10 students are noted from these data as only the most statistically relevant student groups are shown. Note: State EOC data are based on 2018 numbers as 2019 EOC state data have yet to be released.

Alps Road Elementary / Principal:

Indicator	Sub-Indicator	State Overall	CCSD Overall	School Overall	State Female	CCSD Female	School Female	State Male	CCSD Male	School Male	State White Std	CCSD White Std	School White Std	State African American Std	CCSD African American Std	School African American Std	State Hispanic Std	CCSD Hispanic Std	School Hispanic Std	State English Learner Std	CCSD English Learner Std	School English Learner Std	State Special Education Std	CCSD Special Education Std	School Special Education Std
1. English Language Arts EOG	Grades 3-5	43%	34%	16%	48%	38%	23%	38%	30%	8%	57%	71%	56%	29%	17%	12%	34%	33%	31%	17%	15%	14%	14%	9%	0%
3. Math EOG	Grades 3-5	47%	37%	13%	47%	35%	14%	48%	38%	12%	62%	71%	38%	30%	19%	11%	41%	37%	19%	31%	28%	29%	19%	12%	4%
5. Science EOG	5th Grade	43%	32%	23%	43%	32%	23%	42%	31%	20%	59%	75%	-%	26%	14%	18%	36%	28%	33%	14%	5%	-%	18%	11%	0%
7. Social Studies EOG	5th Grade	30%	21%	4%	28%	19%	0%	33%	21%	7%	43%	61%	-%	17%	7%	3%	23%	11%	0%	6%	0%	-%	11%	9%	0%

The Georgia Milestones Assessment System is a comprehensive assessment program spanning grades 3 through high school. Georgia Milestones measure how well students have learned the knowledge and skills outlined in the state-adopted content standards in English Language Arts, mathematics, science, and social studies. In order to put CCSD data in context, comparisons to the state are provided for each subject and grade. For school-level EOG data, data aggregation by level is used to provide statistically reliable comparisons to the state. Boxes shaded green are at or above state averages; boxes shaded yellow are below state averages within 10 points; and boxes shaded red are below state averages above 10 points. In addition, student groups with less than 10 participants are redacted from these data, so only the most statistically relevant student groups are shown.



Georgia Milestones Assessments in Review / 2018-2019

Barnett Shoals Elementary School / Principal: Aliceson Nobles

Indicator	Sub-Indicator	State Overall	CCSD Overall	School Overall	State Female	CCSD Female	School Female	State Male	CCSD Male	School Male	State White Std	CCSD White Std	School White Std	State African American Std	CCSD African American Std	School African American Std	State Hispanic Std	CCSD Hispanic Std	School Hispanic Std	State Multi-Racial Std	CCSD Multi-Racial Std	School Multi-Racial Std	State English Learner Std	CCSD English Learner Std	School English Learner Std	State Special Education Std	CCSD Special Education Std	School Special Education Std
1. English Language Arts EOG	Grades 3-5	43%	34%	41%	48%	38%	40%	38%	30%	40%	57%	71%	71%	29%	17%	21%	34%	33%	35%	50%	37%	44%	17%	15%	25%	14%	9%	13%
3. Math EOG	Grades 3-5	47%	37%	40%	47%	35%	35%	48%	38%	44%	62%	71%	69%	30%	19%	22%	41%	37%	35%	53%	39%	38%	31%	28%	25%	19%	12%	13%
5. Science EOG	5th Grade	43%	32%	37%	43%	32%	26%	42%	31%	45%	59%	75%	76%	26%	14%	8%	36%	28%	44%	51%	26%	-%	14%	5%	-%	18%	11%	27%
7. Social Studies EOG	5th Grade	30%	21%	28%	28%	19%	12%	33%	21%	42%	43%	61%	57%	17%	7%	5%	23%	11%	33%	37%	23%	-%	6%	0%	-%	11%	9%	20%

The Georgia Milestones Assessment System is a comprehensive assessment program spanning grades 3 through high school. Georgia Milestones measure how well students have learned the knowledge and skills outlined in the state-adopted content standards in English Language Arts, mathematics, science, and social studies. In order to put CCSD data in context, comparisons to the state are provided for each subject and grade. For school-level EOG data, data aggregation by level is used to provide statistically reliable comparisons to the state. Boxes shaded green are at or above state averages; boxes shaded yellow are below state averages within 10 points; and boxes shaded red are below state averages above 10 points. In addition, student groups with less than 10 participants are redacted from these data, so only the most statistically relevant student groups are shown.



Georgia Milestones Assessments in Review / 2018-2019

Barrow Elementary School / Principal: Dr. Ellen Sabatini

Indicator	Sub-Indicator	State Overall	CCSD Overall	School Overall	State Female	CCSD Female	School Female	State Male	CCSD Male	School Male	State White Std	CCSD White Std	School White Std	State Asian Std	CCSD Asian Std	School Asian Std	State African American Std	CCSD African American Std	School African American Std	State Hispanic Std	CCSD Hispanic Std	School Hispanic Std	State Multi-Racial Std	CCSD Multi-Racial Std	School Multi-Racial Std	State English Learner Std	CCSD English Learner Std	School English Learner Std	State Special Education Std	CCSD Special Education Std	School Special Education Std
1. English Language Arts EOG	Grades 3-5	43%	34%	45%	48%	38%	50%	38%	30%	39%	57%	71%	74%	72%	49%	20%	29%	17%	4%	34%	33%	47%	50%	37%	33%	17%	15%	10%	14%	9%	18%
3. Math EOG	Grades 3-5	47%	37%	51%	47%	35%	47%	48%	38%	52%	62%	71%	72%	81%	81%	87%	30%	19%	7%	41%	37%	65%	53%	39%	40%	31%	28%	75%	19%	12%	24%
5. Science EOG	5th Grade	43%	32%	49%	43%	32%	52%	42%	31%	44%	59%	75%	86%	74%	34%	-%	26%	14%	7%	36%	28%	-%	51%	26%	-%	14%	5%	-%	18%	11%	33%
7. Social Studies EOG	5th Grade	30%	21%	38%	28%	19%	40%	33%	21%	33%	43%	61%	71%	63%	29%	-%	17%	7%	0%	23%	11%	-%	37%	23%	-%	6%	0%	-%	11%	9%	33%

The Georgia Milestones Assessment System is a comprehensive assessment program spanning grades 3 through high school. Georgia Milestones measure how well students have learned the knowledge and skills outlined in the state-adopted content standards in English Language Arts, mathematics, science, and social studies. In order to put CCSD data in context, comparisons to the state are provided for each subject and grade. For school-level EOG data, data aggregation by level is used to provide statistically reliable comparisons to the state. Boxes shaded green are at or above state averages; boxes shaded yellow are below state averages within 10 points; and boxes shaded red are below state averages above 10 points. In addition, student groups with less than 10 participants are redacted from these data, so only the most statistically relevant student groups are shown.

Georgia Milestones Assessments in Review / 2018-2019

Chase Street Elementary School / Principal:

Indicator	Sub-Indicator	State Overall	CCSD Overall	School Overall	State Female	CCSD Female	School Female	State Male	CCSD Male	School Male	State White Std	CCSD White Std	School White Std	State African American Std	CCSD African American Std	School African American Std	State Hispanic Std	CCSD Hispanic Std	School Hispanic Std	State Special Education Std	CCSD Special Education Std	School Special Education Std
1. English Language Arts EOG	Grades 3-5	43%	34%	61%	48%	38%	67%	38%	30%	53%	57%	71%	88%	29%	17%	10%	34%	33%	50%	14%	9%	27%
3. Math EOG	Grades 3-5	47%	37%	63%	47%	35%	65%	48%	38%	59%	62%	71%	87%	30%	19%	18%	41%	37%	56%	19%	12%	31%
5. Science EOG	5th Grade	43%	32%	66%	43%	32%	67%	42%	31%	64%	59%	75%	98%	26%	14%	27%	36%	28%	-%	18%	11%	33%
7. Social Studies EOG	5th Grade	30%	21%	58%	28%	19%	56%	33%	21%	59%	43%	61%	94%	17%	7%	10%	23%	11%	-%	11%	9%	33%

The Georgia Milestones Assessment System is a comprehensive assessment program spanning grades 3 through high school. Georgia Milestones measure how well students have learned the knowledge and skills outlined in the state-adopted content standards in English Language Arts, mathematics, science, and social studies. In order to put CCSD data in context, comparisons to the state are provided for each subject and grade. For school-level EOG data, data aggregation by level is used to provide statistically reliable comparisons to the state. Boxes shaded green are at or above state averages; boxes shaded yellow are below state averages within 10 points; and boxes shaded red are below state averages above 10 points. In addition, student groups with less than 10 participants are redacted from these data, so only the most statistically relevant student groups are shown.



Georgia Milestones Assessments in Review / 2018-2019

Cleveland Road Elementary School / Principal: Lindsey Chatham

Indicator	Sub-Indicator	State Overall	CCSD Overall	School Overall	State Female	CCSD Female	School Female	State Male	CCSD Male	School Male	State White Std	CCSD White Std	School White Std	State African American Std	CCSD African American Std	School African American Std	State Hispanic Std	CCSD Hispanic Std	School Hispanic Std	State Multi-Racial Std	CCSD Multi-Racial Std	School Multi-Racial Std	State English Learner Std	CCSD English Learner Std	School English Learner Std	State Special Education Std	CCSD Special Education Std	School Special Education Std
1. English Language Arts EOG	Grades 3-5	43%	34%	23%	48%	38%	27%	38%	30%	20%	57%	71%	39%	29%	17%	12%	34%	33%	26%	50%	37%	17%	17%	15%	6%	14%	9%	3%
3. Math EOG	Grades 3-5	47%	37%	30%	47%	35%	26%	48%	38%	34%	62%	71%	58%	30%	19%	21%	41%	37%	26%	53%	39%	17%	31%	28%	16%	19%	12%	3%
5. Science EOG	5th Grade	43%	32%	23%	43%	32%	26%	42%	31%	17%	59%	75%	-%	26%	14%	20%	36%	28%	22%	51%	26%	-%	14%	5%	0%	18%	11%	9%
7. Social Studies EOG	5th Grade	30%	21%	8%	28%	19%	9%	33%	21%	7%	43%	61%	-%	17%	7%	13%	23%	11%	4%	37%	23%	-%	6%	0%	0%	11%	9%	0%

The Georgia Milestones Assessment System is a comprehensive assessment program spanning grades 3 through high school. Georgia Milestones measure how well students have learned the knowledge and skills outlined in the state-adopted content standards in English Language Arts, mathematics, science, and social studies. In order to put CCSD data in context, comparisons to the state are provided for each subject and grade. For school-level EOG data, data aggregation by level is used to provide statistically reliable comparisons to the state. Boxes shaded green are at or above state averages; boxes shaded yellow are below state averages within 10 points; and boxes shaded red are below state averages above 10 points. In addition, student groups with less than 10 participants are redacted from these data, so only the most statistically relevant student groups are shown.

Georgia Milestones Assessments in Review / 2018-2019

Fowler Drive Elementary School / Principal: Angela Jackson (interim)

Indicator	Sub-Indicator	State Overall	CCSD Overall	School Overall	State Female	CCSD Female	School Female	State Male	CCSD Male	School Male	State African American Std	CCSD African American Std	School African American Std	State Hispanic Std	CCSD Hispanic Std	School Hispanic Std	State English Learner Std	CCSD English Learner Std	School English Learner Std	State Special Education Std	CCSD Special Education Std	School Special Education Std
1. English Language Arts EOG	Grades 3-5	43%	34%	18%	48%	38%	22%	38%	30%	14%	29%	17%	11%	34%	33%	24%	17%	15%	7%	14%	9%	10%
3. Math EOG	Grades 3-5	47%	37%	16%	47%	35%	12%	48%	38%	20%	30%	19%	6%	41%	37%	29%	31%	28%	21%	19%	12%	7%
5. Science EOG	5th Grade	43%	32%	27%	43%	32%	24%	42%	31%	29%	26%	14%	11%	36%	28%	43%	14%	5%	20%	18%	11%	-%
7. Social Studies EOG	5th Grade	30%	21%	14%	28%	19%	12%	33%	21%	17%	17%	7%	8%	23%	11%	20%	6%	0%	0%	11%	9%	-%

The Georgia Milestones Assessment System is a comprehensive assessment program spanning grades 3 through high school. Georgia Milestones measure how well students have learned the knowledge and skills outlined in the state-adopted content standards in English Language Arts, mathematics, science, and social studies. In order to put CCSD data in context, comparisons to the state are provided for each subject and grade. For school-level EOG data, data aggregation by level is used to provide statistically reliable comparisons to the state. Boxes shaded green are at or above state averages; boxes shaded yellow are below state averages within 10 points; and boxes shaded red are below state averages above 10 points. In addition, student groups with less than 10 participants are redacted from these data, so only the most statistically relevant student groups are shown.



Georgia Milestones Assessments in Review / 2018-2019

Gaines Elementary School / Principal: Dr. Luther McDaniel

Indicator	Sub-Indicator	State Overall	CCSD Overall	School Overall	State Female	CCSD Female	School Female	State Male	CCSD Male	School Male	State White Std	CCSD White Std	School White Std	State African American Std	CCSD African American Std	School African American Std	State Hispanic Std	CCSD Hispanic Std	School Hispanic Std	State English Learner Std	CCSD English Learner Std	School English Learner Std	State Special Education Std	CCSD Special Education Std	School Special Education Std
1. English Language Arts EOG	Grades 3-5	43%	34%	13%	48%	38%	20%	38%	30%	7%	57%	71%	30%	29%	17%	8%	34%	33%	31%	17%	15%	7%	14%	9%	0%
3. Math EOG	Grades 3-5	47%	37%	12%	47%	35%	15%	48%	38%	12%	62%	71%	40%	30%	19%	9%	41%	37%	17%	31%	28%	7%	19%	12%	3%
5. Science EOG	5th Grade	43%	32%	4%	43%	32%	4%	42%	31%	8%	59%	75%	-%	26%	14%	3%	36%	28%	6%	14%	5%	-%	18%	11%	0%
7. Social Studies EOG	5th Grade	30%	21%	1%	28%	19%	2%	33%	21%	0%	43%	61%	-%	17%	7%	2%	23%	11%	0%	6%	0%	-%	11%	9%	0%

The Georgia Milestones Assessment System is a comprehensive assessment program spanning grades 3 through high school. Georgia Milestones measure how well students have learned the knowledge and skills outlined in the state-adopted content standards in English Language Arts, mathematics, science, and social studies. In order to put CCSD data in context, comparisons to the state are provided for each subject and grade. For school-level EOG data, data aggregation by level is used to provide statistically reliable comparisons to the state. Boxes shaded green are at or above state averages; boxes shaded yellow are below state averages within 10 points; and boxes shaded red are below state averages above 10 points. In addition, student groups with less than 10 participants are redacted from these data, so only the most statistically relevant student groups are shown.

Georgia Milestones Assessments in Review / 2018-2019

Howard B. Stroud Elementary School / Principal: Dr. Stacie Carson

Indicator	Sub-Indicator	State Overall	CCSD Overall	School Overall	State Female	CCSD Female	School Female	State Male	CCSD Male	School Male	State African American Std	CCSD African American Std	School African American Std	State Hispanic Std	CCSD Hispanic Std	School Hispanic Std	State English Learner Std	CCSD English Learner Std	School English Learner Std	State Special Education Std	CCSD Special Education Std	School Special Education Std
1. English Language Arts EOG	Grades 3-5	43%	34%	24%	48%	38%	28%	38%	30%	19%	29%	17%	17%	34%	33%	29%	17%	15%	25%	14%	9%	10%
3. Math EOG	Grades 3-5	47%	37%	27%	47%	35%	33%	48%	38%	20%	30%	19%	24%	41%	37%	16%	31%	28%	15%	19%	12%	10%
5. Science EOG	5th Grade	43%	32%	9%	43%	32%	10%	42%	31%	8%	26%	14%	7%	36%	28%	15%	14%	5%	-%	18%	11%	0%
7. Social Studies EOG	5th Grade	30%	21%	2%	28%	19%	0%	33%	21%	4%	17%	7%	3%	23%	11%	0%	6%	0%	-%	11%	9%	0%

The Georgia Milestones Assessment System is a comprehensive assessment program spanning grades 3 through high school. Georgia Milestones measure how well students have learned the knowledge and skills outlined in the state-adopted content standards in English Language Arts, mathematics, science, and social studies. In order to put CCSD data in context, comparisons to the state are provided for each subject and grade. For school-level EOG data, data aggregation by level is used to provide statistically reliable comparisons to the state. Boxes shaded green are at or above state averages; boxes shaded yellow are below state averages within 10 points; and boxes shaded red are below state averages above 10 points. In addition, student groups with less than 10 participants are redacted from these data, so only the most statistically relevant student groups are shown.

Georgia Milestones Assessments in Review / 2018-2019

Judia Jackson Harris Elementary School / Principal: Dr. Beverly Harper

Indicator	Sub-Indicator	State Overall	CCSD Overall	School Overall	State Female	CCSD Female	School Female	State Male	CCSD Male	School Male	State African American Std	CCSD African American Std	School African American Std	State Hispanic Std	CCSD Hispanic Std	School Hispanic Std	State English Learner Std	CCSD English Learner Std	School English Learner Std	State Special Education Std	CCSD Special Education Std	School Special Education Std
1. English Language Arts EOG	Grades 3-5	43%	34%	28%	48%	38%	23%	38%	30%	33%	29%	17%	20%	34%	33%	29%	17%	15%	17%	14%	9%	10%
3. Math EOG	Grades 3-5	47%	37%	35%	47%	35%	33%	48%	38%	38%	30%	19%	18%	41%	37%	41%	31%	28%	31%	19%	12%	10%
5. Science EOG	5th Grade	43%	32%	22%	43%	32%	19%	42%	31%	27%	26%	14%	24%	36%	28%	23%	14%	5%	0%	18%	11%	11%
7. Social Studies EOG	5th Grade	30%	21%	6%	28%	19%	3%	33%	21%	10%	17%	7%	12%	23%	11%	4%	6%	0%	0%	11%	9%	11%

The Georgia Milestones Assessment System is a comprehensive assessment program spanning grades 3 through high school. Georgia Milestones measure how well students have learned the knowledge and skills outlined in the state-adopted content standards in English Language Arts, mathematics, science, and social studies. In order to put CCSD data in context, comparisons to the state are provided for each subject and grade. For school-level EOG data, data aggregation by level is used to provide statistically reliable comparisons to the state. Boxes shaded green are at or above state averages; boxes shaded yellow are below state averages within 10 points; and boxes shaded red are below state averages above 10 points. In addition, student groups with less than 10 participants are redacted from these data, so only the most statistically relevant student groups are shown.



Georgia Milestones Assessments in Review / 2018-2019

Oglethorpe Avenue Elementary School / Principal: Dr. Bipul Singh

Indicator	Sub-Indicator	State Overall	CCSD Overall	School Overall	State Female	CCSD Female	School Female	State Male	CCSD Male	School Male	State White Std	CCSD White Std	School White Std	State African American Std	CCSD African American Std	School African American Std	State Hispanic Std	CCSD Hispanic Std	School Hispanic Std	State English Learner Std	CCSD English Learner Std	School English Learner Std	State Special Education Std	CCSD Special Education Std	School Special Education Std
1. English Language Arts EOG	Grades 3-5	43%	34%	34%	48%	38%	38%	38%	30%	28%	57%	71%	58%	29%	17%	22%	34%	33%	36%	17%	15%	23%	14%	9%	5%
3. Math EOG	Grades 3-5	47%	37%	35%	47%	35%	33%	48%	38%	34%	62%	71%	54%	30%	19%	25%	41%	37%	35%	31%	28%	27%	19%	12%	3%
5. Science EOG	5th Grade	43%	32%	30%	43%	32%	32%	42%	31%	28%	59%	75%	-%	26%	14%	35%	36%	28%	16%	14%	5%	0%	18%	11%	8%
7. Social Studies EOG	5th Grade	30%	21%	23%	28%	19%	19%	33%	21%	26%	43%	61%	-%	17%	7%	23%	23%	11%	13%	6%	0%	0%	11%	9%	8%

The Georgia Milestones Assessment System is a comprehensive assessment program spanning grades 3 through high school. Georgia Milestones measure how well students have learned the knowledge and skills outlined in the state-adopted content standards in English Language Arts, mathematics, science, and social studies. In order to put CCSD data in context, comparisons to the state are provided for each subject and grade. For school-level EOG data, data aggregation by level is used to provide statistically reliable comparisons to the state. Boxes shaded green are at or above state averages; boxes shaded yellow are below state averages within 10 points; and boxes shaded red are below state averages above 10 points. In addition, student groups with less than 10 participants are redacted from these data, so only the most statistically relevant student groups are shown.

Georgia Milestones Assessments in Review / 2018-2019

Timothy Road Elementary School / Principal: Dr. Kena Worthy

Indicator	Sub-Indicator	State Overall	CCSD Overall	School Overall	State Female	CCSD Female	School Female	State Male	CCSD Male	School Male	State White Std	CCSD White Std	School White Std	State African American Std	CCSD African American Std	School African American Std	State Hispanic Std	CCSD Hispanic Std	School Hispanic Std	State Multi-Racial Std	CCSD Multi-Racial Std	School Multi-Racial Std	State English Learner Std	CCSD English Learner Std	School English Learner Std	State Special Education Std	CCSD Special Education Std	School Special Education Std
1. English Language Arts EOG	Grades 3-5	43%	34%	53%	48%	38%	58%	38%	30%	49%	57%	71%	74%	29%	17%	33%	34%	33%	55%	50%	37%	53%	17%	15%	29%	14%	9%	16%
3. Math EOG	Grades 3-5	47%	37%	52%	47%	35%	49%	48%	38%	55%	62%	71%	75%	30%	19%	32%	41%	37%	55%	53%	39%	41%	31%	28%	46%	19%	12%	16%
5. Science EOG	5th Grade	43%	32%	47%	43%	32%	46%	42%	31%	47%	59%	75%	81%	26%	14%	22%	36%	28%	29%	51%	26%	-%	14%	5%	-%	18%	11%	15%
7. Social Studies EOG	5th Grade	30%	21%	37%	28%	19%	35%	33%	21%	37%	43%	61%	63%	17%	7%	17%	23%	11%	29%	37%	23%	-%	6%	0%	-%	11%	9%	8%

The Georgia Milestones Assessment System is a comprehensive assessment program spanning grades 3 through high school. Georgia Milestones measure how well students have learned the knowledge and skills outlined in the state-adopted content standards in English Language Arts, mathematics, science, and social studies. In order to put CCSD data in context, comparisons to the state are provided for each subject and grade. For school-level EOG data, data aggregation by level is used to provide statistically reliable comparisons to the state. Boxes shaded green are at or above state averages; boxes shaded yellow are below state averages within 10 points; and boxes shaded red are below state averages above 10 points. In addition, student groups with less than 10 participants are redacted from these data, so only the most statistically relevant student groups are shown.



Georgia Milestones Assessments in Review / 2018-2019

Whit Davis Elementary School / Principal: Dr. Daniel McGuire

Indicator	Sub-Indicator	State Overall	CCSD Overall	School Overall	State Female	CCSD Female	School Female	State Male	CCSD Male	School Male	State White Std	CCSD White Std	School White Std	State African American Std	CCSD African American Std	School African American Std	State Hispanic Std	CCSD Hispanic Std	School Hispanic Std	State Multi-Racial Std	CCSD Multi-Racial Std	School Multi-Racial Std	State English Learner Std	CCSD English Learner Std	School English Learner Std	State Special Education Std	CCSD Special Education Std	School Special Education Std
1. English Language Arts EOG	Grades 3-5	43%	34%	30%	48%	38%	35%	38%	30%	27%	57%	71%	56%	29%	17%	12%	34%	33%	33%	50%	37%	33%	17%	15%	29%	14%	9%	8%
3. Math EOG	Grades 3-5	47%	37%	38%	47%	35%	38%	48%	38%	38%	62%	71%	61%	30%	19%	19%	41%	37%	38%	53%	39%	58%	31%	28%	36%	19%	12%	22%
5. Science EOG	5th Grade	43%	32%	30%	43%	32%	23%	42%	31%	34%	59%	75%	50%	26%	14%	7%	36%	28%	-%	51%	26%	-%	14%	5%	-%	18%	11%	27%
7. Social Studies EOG	5th Grade	30%	21%	21%	28%	19%	15%	33%	21%	28%	43%	61%	42%	17%	7%	3%	23%	11%	-%	37%	23%	-%	6%	0%	-%	11%	9%	27%

The Georgia Milestones Assessment System is a comprehensive assessment program spanning grades 3 through high school. Georgia Milestones measure how well students have learned the knowledge and skills outlined in the state-adopted content standards in English Language Arts, mathematics, science, and social studies. In order to put CCSD data in context, comparisons to the state are provided for each subject and grade. For school-level EOG data, data aggregation by level is used to provide statistically reliable comparisons to the state. Boxes shaded green are at or above state averages; boxes shaded yellow are below state averages within 10 points; and boxes shaded red are below state averages above 10 points. In addition, student groups with less than 10 participants are redacted from these data, so only the most statistically relevant student groups are shown.



Georgia Milestones Assessments in Review / 2018-2019

Whitehead Road Elementary School / Principal: April Braswell

Indicator	Sub-Indicator	State Overall	CCSD Overall	School Overall	State Female	CCSD Female	School Female	State Male	CCSD Male	School Male	State White Std	CCSD White Std	School White Std	State Asian Std	CCSD Asian Std	School Asian Std	State African American Std	CCSD African American Std	School African American Std	State Hispanic Std	CCSD Hispanic Std	School Hispanic Std	State Multi-Racial Std	CCSD Multi-Racial Std	School Multi-Racial Std	State English Learner Std	CCSD English Learner Std	School English Learner Std	State Special Education Std	CCSD Special Education Std	School Special Education Std
1. English Language Arts EOG	Grades 3-5	43%	34%	40%	48%	38%	45%	38%	30%	36%	57%	71%	71%	72%	49%	58%	29%	17%	31%	34%	33%	37%	50%	37%	46%	17%	15%	13%	14%	9%	6%
3. Math EOG	Grades 3-5	47%	37%	44%	47%	35%	41%	48%	38%	47%	62%	71%	73%	81%	81%	75%	30%	19%	33%	41%	37%	43%	53%	39%	39%	31%	28%	25%	19%	12%	16%
5. Science EOG	5th Grade	43%	32%	32%	43%	32%	35%	42%	31%	29%	59%	75%	64%	74%	34%	-%	26%	14%	23%	36%	28%	31%	51%	26%	-%	14%	5%	0%	18%	11%	8%
7. Social Studies EOG	5th Grade	30%	21%	16%	28%	19%	18%	33%	21%	14%	43%	61%	46%	63%	29%	-%	17%	7%	11%	23%	11%	10%	37%	23%	-%	6%	0%	0%	11%	9%	0%

The Georgia Milestones Assessment System is a comprehensive assessment program spanning grades 3 through high school. Georgia Milestones measure how well students have learned the knowledge and skills outlined in the state-adopted content standards in English Language Arts, mathematics, science, and social studies. In order to put CCSD data in context, comparisons to the state are provided for each subject and grade. For school-level EOG data, data aggregation by level is used to provide statistically reliable comparisons to the state. Boxes shaded green are at or above state averages; boxes shaded yellow are below state averages within 10 points; and boxes shaded red are below state averages above 10 points. In addition, student groups with less than 10 participants are redacted from these data, so only the most statistically relevant student groups are shown.



Georgia Milestones Assessments in Review / 2018-2019

Winterville Elementary School / Principal: Dr. Donna Elder

Indicator	Sub-Indicator	State Overall	CCSD Overall	School Overall	State Female	CCSD Female	School Female	State Male	CCSD Male	School Male	State White Std	CCSD White Std	School White Std	State African American Std	CCSD African American Std	School African American Std	State Hispanic Std	CCSD Hispanic Std	School Hispanic Std	State English Learner Std	CCSD English Learner Std	School English Learner Std	State Special Education Std	CCSD Special Education Std	School Special Education Std
1. English Language Arts EOG	Grades 3-5	43%	34%	21%	48%	38%	29%	38%	30%	11%	57%	71%	55%	29%	17%	14%	34%	33%	20%	17%	15%	4%	14%	9%	5%
3. Math EOG	Grades 3-5	47%	37%	30%	47%	35%	32%	48%	38%	26%	62%	71%	59%	30%	19%	18%	41%	37%	46%	31%	28%	29%	19%	12%	19%
5. Science EOG	5th Grade	43%	32%	15%	43%	32%	21%	42%	31%	9%	59%	75%	57%	26%	14%	6%	36%	28%	25%	14%	5%	-%	18%	11%	-%
7. Social Studies EOG	5th Grade	30%	21%	5%	28%	19%	7%	33%	21%	3%	43%	61%	29%	17%	7%	0%	23%	11%	8%	6%	0%	-%	11%	9%	-%

The Georgia Milestones Assessment System is a comprehensive assessment program spanning grades 3 through high school. Georgia Milestones measure how well students have learned the knowledge and skills outlined in the state-adopted content standards in English Language Arts, mathematics, science, and social studies. In order to put CCSD data in context, comparisons to the state are provided for each subject and grade. For school-level EOG data, data aggregation by level is used to provide statistically reliable comparisons to the state. Boxes shaded green are at or above state averages; boxes shaded yellow are below state averages within 10 points; and boxes shaded red are below state averages above 10 points. In addition, student groups with less than 10 participants are redacted from these data, so only the most statistically relevant student groups are shown.



Georgia Milestones Assessments in Review / 2018-2019

Burney-Harris-Lyons Middle School / Principal: Dr. Makeba Clark

Indicator	Sub-Indicator	State Overall	CCSD Overall	School Overall	State Female	CCSD Female	School Female	State Male	CCSD Male	School Male	State White Std	CCSD White Std	School White Std	State Asian Std	CCSD Asian Std	School Asian Std	State African American Std	CCSD African American Std	School African American Std	State Hispanic Std	CCSD Hispanic Std	School Hispanic Std	State Multi-Racial Std	CCSD Multi-Racial Std	School Multi-Racial Std	State English Learner Std	CCSD English Learner Std	School English Learner Std	State Special Education Std	CCSD Special Education Std	School Special Education Std
1. English Language Arts EOG	Grades 6-8	44%	31%	34%	48%	37%	40%	38%	25%	26%	58%	72%	68%	65%	46%	40%	30%	17%	24%	35%	29%	32%	51%	42%	42%	5%	2%	2%	10%	8%	11%
3. Math EOG	Grades 6-8	39%	27%	29%	41%	29%	31%	39%	26%	25%	54%	61%	51%	75%	63%	47%	23%	13%	20%	33%	29%	30%	44%	36%	48%	29%	5%	11%	11%	7%	8%
4. Math EOC	Coordinate Algebra (8th Grade Only)	80%	97%	96%	79%	94%	92%	82%	100%	100%	87%	100%	100%	92%	100%	-%	62%	83%	-%	77%	100%	-%	77%	100%	-%	-%	-%	-%	79%	-%	-%
5. Science EOG	8th Grade	32%	8%	6%	32%	7%	7%	33%	8%	5%	46%	17%	-%	56%	-%	-%	21%	6%	6%	24%	9%	5%	38%	-%	-%	7%	0%	0%	10%	2%	4%
6. Science EOC	Physical Science (8th Grade Only)	64%	54%	46%	60%	48%	43%	67%	62%	50%	72%	74%	75%	83%	89%	-%	48%	31%	26%	47%	55%	41%	68%	60%	-%	12%	-%	-%	25%	57%	-%
7. Social Studies EOG	8th Grade	41%	24%	24%	40%	24%	23%	41%	24%	23%	54%	65%	66%	72%	48%	-%	25%	11%	18%	32%	19%	16%	45%	29%	23%	5%	3%	0%	12%	12%	14%

The Georgia Milestones Assessment System is a comprehensive assessment program spanning grades 3 through high school. Georgia Milestones measure how well students have learned the knowledge and skills outlined in the state-adopted content standards in English Language Arts, mathematics, science, and social studies. In order to put CCSD data in context, comparisons to the state are provided for each subject and grade. For school-level EOG data, data aggregation by level is used to provide statistically reliable comparisons to the state. Boxes shaded green are at or above state averages; boxes shaded yellow are below state averages under 10 points; and boxes shaded red are 10 points or more below state averages. In addition, student groups with less than 10 participants are redacted from these data, so only the most statistically relevant student groups are shown. Note: State EOC data are based on 2018 numbers as 2019 EOC state data is yet to be released.



Georgia Milestones Assessments in Review / 2018-2019

Clarke Middle School / Principal: Christopher Pendley

Indicator	Sub-Indicator	State Overall	CCSD Overall	School Overall	State Female	CCSD Female	School Female	State Male	CCSD Male	School Male	State White Std	CCSD White Std	School White Std	State Asian Std	CCSD Asian Std	School Asian Std	State African American Std	CCSD African American Std	School African American Std	State Hispanic Std	CCSD Hispanic Std	School Hispanic Std	State Multi-Racial Std	CCSD Multi-Racial Std	School Multi-Racial Std	State English Learner Std	CCSD English Learner Std	School English Learner Std	State Special Education Std	CCSD Special Education Std	School Special Education Std
1. English Language Arts EOG	Grades 6-8	44%	31%	42%	48%	37%	48%	38%	25%	36%	58%	72%	79%	65%	46%	39%	30%	17%	15%	35%	29%	45%	51%	42%	46%	5%	2%	0%	10%	8%	14%
3. Math EOG	Grades 6-8	39%	27%	32%	41%	29%	30%	39%	26%	33%	54%	61%	65%	75%	63%	71%	23%	13%	9%	33%	29%	29%	44%	36%	34%	29%	5%	10%	11%	7%	10%
4. Math EOC	Coordinate Algebra (8th Grade Only)	80%	97%	100%	79%	94%	100%	82%	100%	100%	87%	100%	100%	92%	100%	-%	62%	83%	-%	77%	100%	-%	77%	100%	-%	-%	-%	-%	79%	-%	-%
5. Science EOG	8th Grade	32%	8%	1%	32%	7%	3%	33%	8%	2%	46%	17%	-%	56%	-%	-%	21%	6%	0%	24%	9%	-%	38%	-%	-%	7%	0%	-%	10%	2%	0%
6. Science EOC	Physical Science (8th Grade Only)	64%	54%	56%	60%	48%	45%	67%	62%	69%	72%	74%	71%	83%	89%	-%	48%	31%	27%	47%	55%	56%	68%	60%	64%	12%	-%	-%	25%	57%	-%
7. Social Studies EOG	8th Grade	41%	24%	35%	40%	24%	32%	41%	24%	36%	54%	65%	70%	72%	48%	-%	25%	11%	8%	32%	19%	30%	45%	29%	40%	5%	3%	-%	12%	12%	17%

The Georgia Milestones Assessment System is a comprehensive assessment program spanning grades 3 through high school. Georgia Milestones measure how well students have learned the knowledge and skills outlined in the state-adopted content standards in English Language Arts, mathematics, science, and social studies. In order to put CCSD data in context, comparisons to the state are provided for each subject and grade. For school-level EOG data, data aggregation by level is used to provide statistically reliable comparisons to the state. Boxes shaded green are at or above state averages; boxes shaded yellow are below state averages within 10 points; and boxes shaded red are below state averages above 10 points. In addition, student groups with less than 10 participants are redacted from these data, so only the most statistically relevant student groups are shown. Note: State EOC data are based on 2018 numbers as 2019 EOC state data is yet to be released.



Georgia Milestones Assessments in Review / 2018-2019

WR Coile Middle School / Principal: Dr. Marsha Thomas

Indicator	Sub-Indicator	State Overall	CCSD Overall	School Overall	State Female	CCSD Female	School Female	State Male	CCSD Male	School Male	State White Std	CCSD White Std	School White Std	State African American Std	CCSD African American Std	School African American Std	State Hispanic Std	CCSD Hispanic Std	School Hispanic Std	State Multi-Racial Std	CCSD Multi-Racial Std	School Multi-Racial Std	State English Learner Std	CCSD English Learner Std	School English Learner Std	State Special Education Std	CCSD Special Education Std	School Special Education Std
1. English Language Arts EOG	Grades 6-8	44%	31%	20%	48%	37%	23%	38%	25%	18%	58%	72%	27%	30%	17%	15%	35%	29%	24%	51%	42%	41%	5%	2%	2%	10%	8%	3%
3. Math EOG	Grades 6-8	39%	27%	23%	41%	29%	22%	39%	26%	23%	54%	61%	30%	23%	13%	15%	33%	29%	31%	44%	36%	29%	29%	5%	2%	11%	7%	4%
5. Science EOG	8th Grade	32%	8%	12%	32%	7%	10%	33%	8%	13%	46%	17%	-%	21%	6%	15%	24%	9%	9%	38%	-%	-%	7%	0%	0%	10%	2%	0%
6. Science EOC	Physical Science (8th Grade Only)	64%	54%	65%	60%	48%	50%	67%	62%	79%	72%	74%	-%	48%	31%	57%	47%	55%	71%	68%	60%	-%	12%	-%	-%	25%	57%	-%
7. Social Studies EOG	8th Grade	41%	24%	16%	40%	24%	11%	41%	24%	20%	54%	65%	-%	25%	11%	11%	32%	19%	22%	45%	29%	-%	5%	3%	5%	12%	12%	5%

The Georgia Milestones Assessment System is a comprehensive assessment program spanning grades 3 through high school. Georgia Milestones measure how well students have learned the knowledge and skills outlined in the state-adopted content standards in English Language Arts, mathematics, science, and social studies. In order to put CCSD data in context, comparisons to the state are provided for each subject and grade. For school-level EOG data, data aggregation by level is used to provide statistically reliable comparisons to the state. Boxes shaded green are at or above state averages; boxes shaded yellow are below state averages within 10 points; and boxes shaded red are below state averages above 10 points. In addition, student groups with less than 10 participants are redacted from these data, so only the most statistically relevant student groups are shown. Note: State EOC data are based on 2018 numbers as 2019 EOC state data is yet to be released.



Georgia Milestones Assessments in Review / 2018-2019

Hillsman Middle School / Principal: Michael Harris (interim)

Indicator	Sub-Indicator	State Overall	CCSD Overall	School Overall	State Female	CCSD Female	School Female	State Male	CCSD Male	School Male	State White Std	CCSD White Std	School White Std	State Asian Std	CCSD Asian Std	School Asian Std	State African American Std	CCSD African American Std	School African American Std	State Hispanic Std	CCSD Hispanic Std	School Hispanic Std	State Multi-Racial Std	CCSD Multi-Racial Std	School Multi-Racial Std	State English Learner Std	CCSD English Learner Std	School English Learner Std	State Special Education Std	CCSD Special Education Std	School Special Education Std
1. English Language Arts EOG	Grades 6-8	44%	31%	29%	48%	37%	37%	38%	25%	20%	58%	72%	70%	65%	46%	73%	30%	17%	15%	35%	29%	28%	51%	42%	42%	5%	2%	5%	10%	8%	7%
3. Math EOG	Grades 6-8	39%	27%	26%	41%	29%	29%	39%	26%	21%	54%	61%	67%	75%	63%	-%	23%	13%	13%	33%	29%	23%	44%	36%	33%	29%	5%	0%	11%	7%	7%
4. Math EOC	Coordinate Algebra (8th Grade Only)	80%	97%	100%	79%	94%	-%	82%	100%	-%	87%	100%	-%	92%	100%	-%	62%	83%	-%	77%	100%	-%	77%	100%	-	-%	-%	-%	79%	-%	-%
5. Science EOG	8th Grade	32%	8%	8%	32%	7%	7%	33%	8%	8%	46%	17%	-%	56%	-%	-%	21%	6%	1%	24%	9%	27%	38%	-%	-%	7%	0%	-%	10%	2%	3%
6. Science EOC	Physical Science (8th Grade Only)	64%	54%	56%	60%	48%	60%	67%	62%	50%	72%	74%	86%	83%	89%	-%	48%	31%	30%	47%	55%	-%	68%	60%	56%	12%	-%	-%	25%	57%	-%
7. Social Studies EOG	8th Grade	41%	24%	22%	40%	24%	27%	41%	24%	17%	54%	65%	67%	72%	48%	-%	25%	11%	10%	32%	19%	11%	45%	29%	-%	5%	3%	-%	12%	12%	12%

The Georgia Milestones Assessment System is a comprehensive assessment program spanning grades 3 through high school. Georgia Milestones measure how well students have learned the knowledge and skills outlined in the state-adopted content standards in English Language Arts, mathematics, science, and social studies. In order to put CCSD data in context, comparisons to the state are provided for each subject and grade. For school-level EOG data, data aggregation by level is used to provide statistically reliable comparisons to the state. Boxes shaded green are at or above state averages; boxes shaded yellow are below state averages within 10 points; and boxes shaded red are below state averages above 10 points. In addition, student groups with less than 10 participants are redacted from these data, so only the most statistically relevant student groups are shown. Note: State EOC data are based on 2018 numbers as 2019 EOC state data is yet to be released.



Georgia Milestones Assessments in Review / 2018-2019

Cedar Shoals High School / Principal: Derrick Maxwell

Indicator	Sub-Indicator	State Overall	CCSD Overall	School Overall	State Female	CCSD Female	School Female	State Male	CCSD Male	School Male	State White Std	CCSD White Std	School White Std	State African American Std	CCSD African American Std	School African American Std	State Hispanic Std	CCSD Hispanic Std	School Hispanic Std	State Multi-Racial Std	CCSD Multi-Racial Std	School Multi-Racial Std	State English Learner Std	CCSD English Learner Std	School English Learner Std	State Special Education Std	CCSD Special Education Std	School Special Education Std
2. English Language Arts EOC	9th Grade Literature	49%	46%	45%	56%	51%	51%	42%	41%	39%	63%	86%	84%	34%	30%	34%	41%	42%	41%	56%	52%	51%	5%	13%	24%	11%	15%	15%
	American Literature	45%	35%	29%	50%	36%	31%	41%	34%	26%	61%	81%	66%	29%	17%	13%	37%	36%	38%	53%	42%	44%	4%	3%	6%	10%	11%	7%
4. Math EOC	Coordinate Algebra (HS only)	26%	23%	18%	28%	25%	20%	24%	22%	17%	47%	62%	54%	15%	10%	10%	22%	23%	17%	33%	30%	30%	8%	4%	3%	6%	6%	7%
	Analytic Geometry (HS only)	34%	30%	23%	35%	33%	24%	34%	27%	22%	56%	60%	56%	19%	17%	16%	30%	29%	21%	42%	32%	30%	11%	8%	0%	8%	5%	6%
6. Science EOC	Physical Science (HS only)	27%	14%	0%	25%	10%	-%	29%	17%	-%	40%	23%	-%	15%	10%	-%	22%	18%	-%	30%	23%	-%	6%	0%	-%	8%	5%	-%
	Biology (HS only)	48%	29%	24%	49%	29%	24%	47%	28%	24%	63%	74%	70%	30%	14%	13%	39%	22%	20%	54%	39%	36%	10%	5%	10%	13%	10%	8%
8. Social Studies EOC	U.S. History	46%	34%	27%	43%	29%	22%	49%	40%	33%	60%	80%	71%	30%	15%	12%	40%	34%	29%	53%	45%	46%	9%	8%	0%	17%	15%	8%
	Economics	48%	31%	28%	46%	28%	25%	51%	35%	32%	62%	70%	62%	32%	14%	14%	40%	30%	32%	53%	35%	34%	10%	3%	0%	15%	7%	12%

The Georgia Milestones Assessment System is a comprehensive assessment program spanning grades 3 through high school. Georgia Milestones measure how well students have learned the knowledge and skills outlined in the state-adopted content standards in English Language Arts, mathematics, science, and social studies. In order to put CCSD data in context, comparisons to the state are provided for each subject and grade. For school-level EOG data, data aggregation by level is used to provide statistically reliable comparisons to the state. Boxes shaded green are at or above state averages; boxes shaded yellow are below state averages within 10 points; and boxes shaded red are below state averages above 10 points. In addition, student groups with less than 10 participants are redacted from these data, so only the most statistically relevant student groups are shown. Note: State EOC data are based on 2018 numbers as 2019 EOC state data is yet to be released.



Georgia Milestones Assessments in Review / 2018-2019

Clarke Central High School / Principal: Dr. Swade Huff

Indicator	Sub-Indicator	State Overall	CCSD Overall	School Overall	State Female	CCSD Female	School Female	State Male	CCSD Male	School Male	State White Std	CCSD White Std	School White Std	State Asian Std	CCSD Asian Std	School Asian Std	State African American Std	CCSD African American Std	School African American Std	State Hispanic Std	CCSD Hispanic Std	School Hispanic Std	State Multi-Racial Std	CCSD Multi-Racial Std	School Multi-Racial Std	State English Learner Std	CCSD English Learner Std	School English Learner Std	State Special Education Std	CCSD Special Education Std	School Special Education Std
2. English Language Arts EOC	9th Grade Literature	49%	46%	48%	56%	51%	52%	42%	41%	43%	63%	86%	88%	75%	62%	55%	34%	30%	28%	41%	42%	42%	56%	52%	53%	5%	13%	0%	11%	15%	16%
	American Literature	45%	35%	42%	50%	36%	42%	41%	34%	42%	61%	81%	88%	70%	80%	-%	29%	17%	22%	37%	36%	34%	53%	42%	43%	4%	3%	0%	10%	11%	17%
4. Math EOC	Coordinate Algebra (HS only)	26%	23%	29%	28%	25%	31%	24%	22%	27%	47%	62%	69%	41%	40%	-%	15%	10%	10%	22%	23%	29%	33%	30%	34%	8%	4%	5%	6%	6%	5%
	Analytic Geometry (HS only)	34%	30%	36%	35%	33%	40%	34%	27%	31%	56%	60%	62%	56%	77%	70%	19%	17%	16%	30%	29%	36%	42%	32%	35%	11%	8%	14%	8%	5%	4%
6. Science EOC	Physical Science (HS only)	27%	14%	15%	25%	10%	12%	29%	17%	17%	40%	23%	22%	43%	-%	-%	15%	10%	11%	22%	18%	20%	30%	23%	24%	6%	0%	0%	8%	5%	3%
	Biology (HS only)	48%	29%	33%	49%	29%	34%	47%	28%	32%	63%	74%	78%	77%	40%	42%	30%	14%	14%	39%	22%	24%	54%	39%	40%	10%	5%	0%	13%	10%	14%
8. Social Studies EOC	U.S. History	46%	34%	41%	43%	29%	36%	49%	40%	46%	60%	80%	85%	72%	88%	-%	30%	15%	18%	40%	34%	42%	53%	45%	44%	9%	8%	20%	17%	15%	25%
	Economics	48%	31%	35%	46%	28%	31%	51%	35%	39%	62%	70%	74%	73%	79%	75%	32%	14%	16%	40%	30%	30%	53%	35%	37%	10%	3%	5%	15%	7%	3%

The Georgia Milestones Assessment System is a comprehensive assessment program spanning grades 3 through high school. Georgia Milestones measure how well students have learned the knowledge and skills outlined in the state-adopted content standards in English Language Arts, mathematics, science, and social studies. In order to put CCSD data in context, comparisons to the state are provided for each subject and grade. For school-level EOG data, data aggregation by level is used to provide statistically reliable comparisons to the state. Boxes shaded green are at or above state averages; boxes shaded yellow are below state averages within 10 points; and boxes shaded red are below state averages above 10 points. In addition, student groups with less than 10 participants are redacted from these data, so only the most statistically relevant student groups are shown. Note: State EOC data are based on 2018 numbers as 2019 EOC state data is yet to be released.

Classic City High School / Principal: Katrina Daniel

Indicator	Sub-Indicator	State Overall	CCSD Overall	School Overall	State Female	CCSD Female	School Female	State Male	CCSD Male	School Male	State White Std	CCSD White Std	School White Std	State African American Std	CCSD African American Std	School African American Std	State Hispanic Std	CCSD Hispanic Std	School Hispanic Std
2. English Language Arts EOC	9th Grade Literature	49%	46%	12%	56%	51%	13%	42%	41%	11%	63%	86%	-%	34%	30%	6%	41%	42%	33%
	American Literature	45%	35%	12%	50%	36%	8%	41%	34%	16%	61%	81%	80%	29%	17%	0%	37%	36%	-%
4. Math EOC	Coordinate Algebra (HS only)	26%	23%	5%	28%	25%	0%	24%	22%	8%	47%	62%	-%	15%	10%	0%	22%	23%	-%
	Analytic Geometry (HS only)	34%	30%	5%	35%	33%	8%	34%	27%	0%	56%	60%	-%	19%	17%	0%	30%	29%	20%
6. Science EOC	Physical Science (HS only)	27%	14%	11%	25%	10%	5%	29%	17%	19%	40%	23%	25%	15%	10%	6%	22%	18%	-%
	Biology (HS only)	48%	29%	0%	49%	29%	0%	47%	28%	0%	63%	74%	-%	30%	14%	0%	39%	22%	-%
8. Social Studies EOC	U.S. History	46%	34%	14%	43%	29%	9%	49%	40%	20%	60%	80%	50%	30%	15%	11%	40%	34%	0%
	Economics	48%	31%	9%	46%	28%	10%	51%	35%	9%	62%	70%	67%	32%	14%	0%	40%	30%	0%

The Georgia Milestones Assessment System is a comprehensive assessment program spanning grades 3 through high school. Georgia Milestones measure how well students have learned the knowledge and skills outlined in the state-adopted content standards in English Language Arts, mathematics, science, and social studies. In order to put CCSD data in context, comparisons to the state are provided for each subject and grade. For school-level EOG data, data aggregation by level is used to provide statistically reliable comparisons to the state. Boxes shaded green are at or above state averages; boxes shaded yellow are below state averages within 10 points; and boxes shaded red are below state averages above 10 points. In addition, student groups with less than 10 participants are redacted from these data, so only the most statistically relevant student groups are shown. Note: State EOC data are based on 2018 numbers as 2019 EOC state data is yet to be released.

Georgia Milestones EOG ELA Proficiency (Grades 3-8)

School	All	White	Asian	Black	Hispanic	Multi-Racial	English Learners	Special Education	Gifted
Alps Road Elementary	16%	56%	-	12%	31%	11%	22%	0%	61%
Barnett Shoals Elementary	41%	71%	75%	21%	35%	44%	29%	13%	88%
Barrow Elementary	45%	74%	20%	4%	47%	33%	16%	16%	89%
Chase Street Elementary	61%	88%	100%	10%	50%	71%	33%	26%	95%
Cleveland Road Elementary	23%	38%	100%	12%	26%	17%	21%	3%	77%
Fowler Drive Elementary	18%	33%	-	11%	24%	0%	9%	9%	56%
Gaines Elementary	13%	30%	75%	8%	31%	14%	18%	0%	84%
Howard B. Stroud Elementary	24%	88%	-	17%	29%	75%	24%	10%	85%
Judia Jackson Harris Elementary	28%	50%	100%	20%	29%	33%	17%	10%	72%
Oglethorpe Avenue Elementary	33%	58%	-	22%	36%	50%	29%	5%	70%
Timothy Road Elementary	53%	74%	50%	33%	55%	53%	39%	16%	93%
Whit Davis Elementary	30%	56%	0%	13%	33%	33%	29%	8%	84%
Whitehead Road Elementary	40%	71%	58%	30%	37%	46%	21%	6%	100%
Winterville Elementary	21%	57%	-	14%	20%	22%	6%	5%	77%
Burney-Harris-Lyons Middle	34%	68%	40%	24%	32%	41%	2%	11%	80%
Clarke Middle	42%	79%	39%	15%	45%	46%	0%	13%	95%
W.R. Coile Middle	20%	27%	0%	15%	24%	37%	1%	3%	79%
Hilsman Middle	29%	71%	73%	15%	28%	41%	5%	6%	87%
District	33%	71%	47%	17%	31%	39%	16%	9%	86%

Georgia Milestones EOG Math Proficiency (Grades 3-8)

School	All	White	Asian	Black	Hispanic	Multi-Racial	English Learners	Special Education	Gifted
Alps Road Elementary	13%	38%	-	11%	16%	25%	25%	4%	61%
Barnett Shoals Elementary	39%	69%	75%	21%	30%	38%	32%	13%	84%
Barrow Elementary	50%	72%	87%	7%	65%	40%	72%	22%	89%
Chase Street Elementary	62%	87%	100%	19%	56%	57%	33%	30%	95%
Cleveland Road Elementary	30%	58%	100%	20%	28%	17%	27%	6%	81%
Fowler Drive Elementary	16%	30%	-	6%	27%	0%	24%	6%	63%
Gaines Elementary	13%	45%	100%	9%	20%	14%	32%	3%	60%
Howard B. Stroud Elementary	27%	86%	-	24%	16%	100%	14%	10%	89%
Judia Jackson Harris Elementary	35%	50%	0%	19%	41%	33%	35%	10%	68%
Oglethorpe Avenue Elementary	34%	54%	-	24%	34%	63%	32%	2%	84%
Timothy Road Elementary	52%	75%	75%	32%	53%	41%	50%	16%	95%
Whit Davis Elementary	38%	60%	100%	20%	38%	58%	39%	22%	88%
Whitehead Road Elementary	44%	73%	75%	34%	43%	39%	35%	16%	85%
Winterville Elementary	29%	61%	-	17%	46%	22%	37%	17%	81%
Burney-Harris-Lyons Middle	28%	50%	47%	19%	29%	46%	16%	8%	74%
Clarke Middle	32%	65%	71%	9%	30%	34%	17%	9%	82%
W.R. Coile Middle	23%	30%	0%	14%	31%	26%	4%	4%	81%
Hilsman Middle	25%	67%	89%	12%	23%	32%	0%	6%	78%
District	32%	67%	72%	16%	33%	37%	28%	10%	83%

Georgia Milestones EOG

Science Proficiency (Grades 5 & 8)

School	All	White	Asian	Black	Hispanic	Multi-Racial	English Learners	Special Education	Gifted
Alps Road Elementary	23%	100%	-	17%	27%	0%	0%	0%	60%
Barnett Shoals Elementary	37%	76%	100%	8%	40%	67%	29%	27%	87%
Barrow Elementary	49%	86%	29%	7%	57%	25%	22%	30%	93%
Chase Street Elementary	66%	98%	-	28%	25%	33%	0%	30%	97%
Cleveland Road Elementary	23%	25%	100%	17%	21%	0%	21%	8%	75%
Fowler Drive Elementary	27%	50%	-	13%	41%	0%	26%	13%	100%
Gaines Elementary	4%	20%	0%	4%	11%	0%	9%	0%	43%
Howard B. Stroud Elementary	9%	0%	-	6%	15%	-	0%	0%	67%
Judia Jackson Harris Elementary	22%	0%	-	24%	23%	0%	8%	11%	83%
Oglethorpe Avenue Elementary	30%	75%	-	33%	16%	33%	4%	8%	81%
Timothy Road Elementary	47%	81%	33%	22%	25%	33%	33%	15%	87%
Whit Davis Elementary	30%	46%	0%	6%	57%	50%	20%	27%	93%
Whitehead Road Elementary	32%	64%	67%	23%	31%	25%	14%	8%	77%
Winterville Elementary	15%	57%	-	6%	25%	0%	13%	0%	63%
Burney-Harris-Lyons Middle	6%	22%	0%	6%	5%	0%	0%	4%	14%
Clarke Middle	1%	17%	-	0%	9%	0%	0%	0%	-
W.R. Coile Middle	12%	0%	0%	14%	9%	0%	0%	0%	-
Hilsman Middle	8%	22%	100%	1%	27%	0%	0%	3%	0%
District	23%	68%	36%	11%	21%	19%	12%	9%	82%

Georgia Milestones EOG

Social Studies Proficiency (Grades 5 & 8)

School	All	White	Asian	Black	Hispanic	Multi-Racial	English Learners	Special Education	Gifted
Alps Road Elementary	4%	50%	-	2%	0%	0%	0%	0%	40%
Barnett Shoals Elementary	28%	57%	100%	5%	30%	67%	14%	20%	67%
Barrow Elementary	38%	71%	29%	0%	29%	25%	11%	30%	74%
Chase Street Elementary	58%	94%	-	13%	50%	0%	33%	30%	93%
Cleveland Road Elementary	8%	13%	0%	11%	4%	0%	4%	0%	50%
Fowler Drive Elementary	14%	50%	-	10%	19%	0%	9%	13%	63%
Gaines Elementary	1%	0%	0%	1%	0%	0%	0%	0%	14%
Howard B. Stroud Elementary	2%	0%	-	3%	0%	-	0%	0%	33%
Judia Jackson Harris Elementary	6%	0%	-	12%	4%	0%	0%	11%	33%
Oglethorpe Avenue Elementary	23%	63%	-	22%	13%	33%	4%	8%	69%
Timothy Road Elementary	36%	63%	33%	17%	25%	33%	0%	8%	77%
Whit Davis Elementary	21%	42%	0%	3%	14%	50%	0%	27%	80%
Whitehead Road Elementary	16%	45%	67%	11%	10%	25%	3%	0%	54%
Winterville Elementary	5%	29%	-	0%	8%	0%	0%	0%	38%
Burney-Harris-Lyons Middle	24%	66%	38%	17%	15%	21%	5%	13%	69%
Clarke Middle	35%	70%	-	7%	28%	40%	13%	16%	92%
W.R. Coile Middle	16%	11%	0%	11%	22%	0%	5%	4%	75%
Hilsman Middle	22%	65%	60%	10%	11%	38%	0%	11%	79%
District	22%	63%	41%	9%	15%	26%	4%	11%	73%

Georgia Milestones EOC 9th Grade Literature

School	All	White	Asian	Black	Hispanic	Multi-Racial	English Learners	Special Education	Gifted
Cedar Shoals High	45%	84%	100%	34%	41%	51%	24%	15%	90%
Clarke Central High	47%	88%	55%	28%	42%	53%	0%	16%	97%
Classic City High	12%	-	-	6%	42%	-	-	-	-
District	46%	86%	62%	30%	42%	52%	13%	15%	95%

Georgia Milestones EOC American Literature

School	All	White	Asian	Black	Hispanic	Multi-Racial	English Learners	Special Education	Gifted
Cedar Shoals High	28%	66%	100%	13%	38%	44%	6%	7%	71%
Clarke Central High	42%	88%	78%	22%	34%	43%	0%	17%	90%
Classic City High	12%	80%	-	0%	20%	-	-	-	-
District	35%	81%	80%	17%	36%	42%	3%	11%	85%

Georgia Milestones EOC Coordinate Algebra

School	All	White	Asian	Black	Hispanic	Multi-Racial	English Learners	Special Education	Gifted
Burney-Harris-Lyons Middle	96%	100%	100%	86%	100%	100%	-	-	100%
Clarke Middle	100%	100%	100%	100%	100%	100%	-	-	100%
W.R. Coile Middle	-	-	-	-	-	-	-	-	-
Hilsman Middle	100%	100%	100%	100%	100%	100%	-	-	100%
District - 8th Grade Only	98%	100%	100%	83%	100%	100%	-	-	100%
Cedar Shoals High	18%	54%	33%	10%	17%	30%	3%	7%	68%
Clarke Central High	28%	69%	43%	10%	29%	34%	5%	5%	85%
Classic City High	5%	-	-	0%	-	-	-	-	-
District - HS Only	23%	62%	40%	10%	23%	30%	4%	6%	79%

Georgia Milestones EOC Analytic Geometry

School	All	White	Asian	Black	Hispanic	Multi-Racial	English Learners	Special Education	Gifted
Cedar Shoals High	23%	56%	100%	16%	21%	30%	0%	6%	89%
Clarke Central High	36%	62%	70%	16%	36%	35%	14%	4%	90%
Classic City High	5%	-	-	0%	20%	-	-	-	-
District	30%	60%	77%	17%	29%	32%	8%	5%	90%

Georgia Milestones EOC Physical Science

School	All	White	Asian	Black	Hispanic	Multi-Racial	English Learners	Special Education	Gifted
Burney-Harris-Lyons Middle	46%	75%	75%	26%	41%	-	-	-	72%
Clarke Middle	56%	71%	100%	27%	56%	64%	-	-	85%
W.R. Coile Middle	65%	50%	-	57%	71%	-	-	-	83%
Hilsman Middle	56%	86%	100%	30%	50%	56%	-	-	77%
District - 8th Grade Only	54%	74%	89%	31%	55%	60%	-	-	80%
Cedar Shoals High	0%	-	-	0%	0%	22%	-	-	-
Clarke Central High	15%	22%	-	11%	19%	24%	0%	5%	-
Classic City High	11%	25%	-	6%	0%	-	-	-	-
District - HS Only	14%	23%	-	10%	18%	23%	0%	5%	-

Georgia Milestones EOC Biology

School	All	White	Asian	Black	Hispanic	Multi-Racial	English Learners	Special Education	Gifted
Cedar Shoals High	24%	70%	33%	13%	20%	36%	10%	8%	77%
Clarke Central High	33%	78%	42%	14%	24%	40%	0%	14%	89%
Classic City High	0%	-	-	0%	-	-	-	-	-
District	29%	74%	40%	14%	22%	39%	5%	10%	85%

Georgia Milestones EOC US History

School	All	White	Asian	Black	Hispanic	Multi-Racial	English Learners	Special Education	Gifted
Cedar Shoals High	27%	71%	100%	12%	29%	46%	0%	8%	66%
Clarke Central High	41%	85%	83%	18%	42%	44%	19%	25%	90%
Classic City High	12%	50%	-	11%	0%	-	-	-	-
District	34%	80%	88%	15%	34%	45%	8%	15%	83%

Georgia Milestones EOC Economics

School	All	White	Asian	Black	Hispanic	Multi-Racial	English Learners	Special Education	Gifted
Cedar Shoals High	28%	62%	100%	14%	32%	32%	0%	12%	79%
Clarke Central High	35%	74%	75%	16%	24%	30%	9%	4%	90%
Classic City High	9%	67%	-	0%	0%	0%	0%	-	50%
District	31%	70%	79%	14%	30%	30%	6%	7%	86%

PROFILE OF A CCSD GRADUATE

The school district has worked closely with our curricular experts in science, counseling, English language arts, math, and social studies to answer the following question: *What coursework and level of achievement do you recommend as the profile of a college-and-career-ready high school graduate?* David Conley (2012) defines a student who is ready for college and career as one who can qualify for and succeed in entry-level, credit-bearing college courses leading to a baccalaureate or certificate, or career pathway-oriented training programs, without the need for remedial or developmental coursework. The following images reflect the percentage of CCSD students who have met this standard of college and career readiness during the last school year:



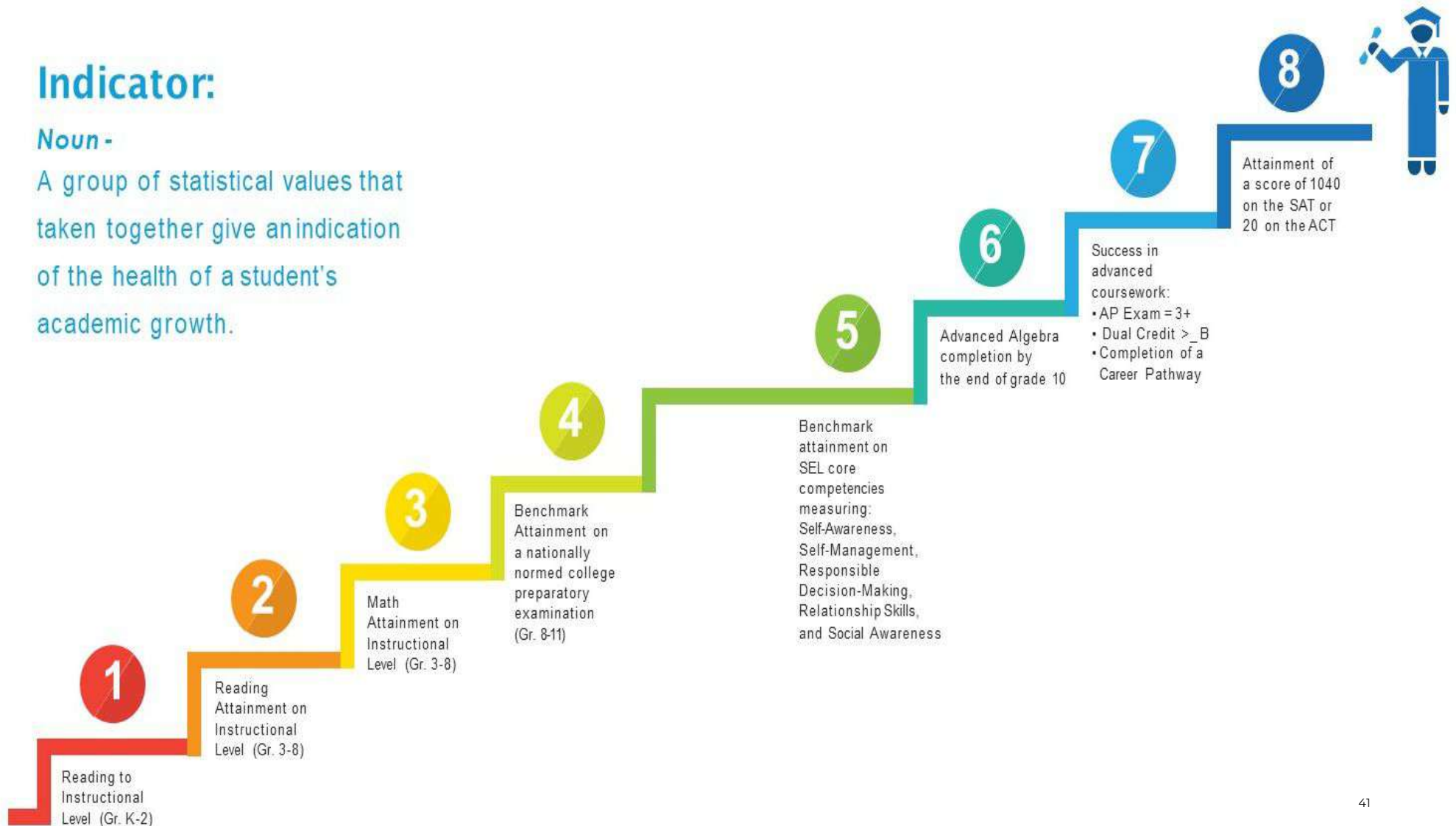
	CCSD Profile A	CCSD Profile B	Cedar Shoals Profile A	Cedar Shoals Profile B	Clarke Central Profile A	Clarke Central Profile B
Total	4.8%	29.9%	4.1%	29.4%	5.9%	33.2%
Asian	6.7%	20.0%	33.0%	0.0%	0.0%	27.3%
Black	1.6%	21.4%	1.5%	19.8%	1.9%	24.8%
Hispanic	5.7%	27.7%	6.5%	29.0%	5.9%	30.9%
Multi-Racial	0.0%	42.9%	0.0%	30.0%	0.0%	52.2%
White	13.1%	51.2%	7.7%	74.4%	17.1%	48.7%
SPED	0.0%	6.7%	0.0%	10.0%	0.0%	5.7%
ESOL	3.6%	25.2%	4.3%	23.9%	3.5%	29.8%
Gifted	18.6%	65.3%	7.7%	57.9%	19.2%	70.5%

Indicators of College & Career Success

Indicator:

Noun -

A group of statistical values that taken together give an indication of the health of a student's academic growth.



INDICATORS OF COLLEGE AND CAREER SUCCESS

The Clarke County School District has created indicators that provide parents and educators a gauge on how students are progressing toward the goal of becoming college and/or career ready. The indicators are academic goals that allow the district to rely on another set of data points, beyond the Georgia Milestones. The indicators were created after researching which standards of academic performance accurately predict future success and persistence. The indicators are:

- 1. Reading to Instructional Level (K–2nd grade)** — The instructional level is the ability at which the student can read without additional support (i.e., challenging but manageable text for the reader).
- 2. Reading Attainment (3rd–8th grade)** — Students who score above the 66th percentile at grade level on Measures of Academic Progress (MAP) tests demonstrate literacy skills that will likely lead to college success.
- 3. Math Attainment (3rd–8th grade)** — Students who score above the 70th percentile at grade level on Measures of Academic Progress (MAP) tests demonstrate numeracy skills that will likely lead to college success.
- 4. Benchmark Attainment (8th–11th grade)** — The ACT Aspire & PSAT assessments can be used to assess college readiness. Students who meet or exceed the ACT Benchmarks in English, math, reading, and science associated with this exam have a high probability for success in college credit-bearing courses.
- 5. Social-Emotional Growth** — Employers, colleges, and universities consider several factors in their hiring and admissions decisions. Some of the key factors include self-management, self-awareness, social awareness, relationship skills, and responsible decision making.
- 6. Advanced Algebra Completion** — Students who take advanced math in high school are much more likely to attend and graduate from college. By completing Advanced Algebra by the end of 10th grade with a “C” or higher, students will have access to rigorous pre-college mathematics course options in grades 11 and 12.
- 7. Success in Advanced Coursework** — Students who successfully complete advanced coursework (i.e., take Advanced Placement exams with a score of 3 or better or dual-credit courses with a “B” or better) perform better in college.
- 8. Attainment of a 1040 on the SAT or 20 on the ACT** — Achieving a 1040 on the SAT or a 20 on the ACT places a student approximately in the top 51st percentile nationally among students taking either assessment. The identified scores provide options for any student seeking postsecondary opportunities.

College & Career Readiness Indicators

End of Year Data for 2018-2019							
Indicator 1	Indicator 2	Indicator 3	Indicator 4	Indicator 5	Indicator 6	Indicator 7	Indicator 8
61%	28%	20%	42%	81%	36%	49%	44%

Baseline Data for 2018-2019							
Indicator 1	Indicator 2	Indicator 3	Indicator 4	Indicator 5	Indicator 6	Indicator 7	Indicator 8
37%	27%	17%	35%	80%	22%	47%	37%

Indicator 1
Reading to Instructional Level (K-2)

School	# Enrolled	# Met Indicator	Percentage
Alps Road	99	36	36%
Barnett Shoals	144	82	57%
Barrow	182	131	72%
Chase Street	205	122	60%
Cleveland Road	61	54	89%
Fowler Drive	130	59	45%
Gaines	138	77	56%
Howard B. Stroud	118	57	48%
Judia Jackson Harris	131	67	51%
Oglethorpe Avenue	174	118	68%
Timothy Road	201	149	74%
Whit Davis	198	137	69%
Whitehead Road	255	153	60%
Winterville	163	92	56%
District	2,120	1,302	61%

Indicator 1
Reading to Instructional Level (K-2)

School	White	Asian	Black	Hispanic	Multi-Racial	English Learners	Special Education	Gifted
Alps Road	63.6%	—	38.9%	38.5%	22.2%	38.9%	11.1%	83%
Barnett Shoals	76.8%	66.7%	40.8%	43.8%	52.4%	34.6%	34.7%	100%
Barrow	91.9%	38.1%	47.3%	76.9%	61.5%	45.2%	27.6%	100%
Chase Street	80.1%	—	38.2%	48.0%	68.4%	53.8%	33.3%	93.0%
Cleveland Road	87.5%	—	68.4%	79.4%	100.0%	71.4%	50.0%	100.0%
Fowler Drive	64.7%	—	31.1%	37.1%	40.0%	33.7%	15.6%	79.0%
Gaines	57.1%	—	46.8%	59.3%	75.0%	48.5%	14.6%	100.0%
Howard B. Stroud	66.7%	—	46.7%	62.2%	73.3%	58.1%	28.0%	94.0%
Judia Jackson Harris	71.4%	—	34.7%	47.0%	0.0%	38.9%	18.2%	100.0%
Oglethorpe Avenue	79.4%	—	54.3%	45.2%	84.6%	38.5%	19.6%	95.0%
Timothy Road	79.5%	66.7%	55.3%	57.4%	68.8%	48.7%	30.3%	97.0%
Whit Davis	80.6%	—	47.2%	58.1%	71.4%	46.4%	32.6%	96.0%
Whitehead Road	82.5%	26.7%	48.0%	46.0%	76.5%	32.4%	20.0%	100.0%
Winterville	76.9%	—	42.4%	46.3%	69.2%	46.8%	37.2%	93.0%
District	83.6%	58.1%	51.8%	55.2%	68.9%	52.2%	40.5%	96%

Indicator 2
Reading Attainment on Instructional Level (3-8)

School	# Enrolled	# Met Indicator	Percentage
Alps Road Elementary	179	17	10%
Barnett Shoals Elementary	234	86	37%
Barrow Elementary	243	99	41%
Chase Street Elementary	259	141	54%
Cleveland Road Elementary	144	29	20%
Fowler Drive Elementary	220	33	15%
Gaines Elementary	246	29	12%
Howard B. Stroud Elementary	157	28	18%
Judia Jackson Harris Elementary	218	36	16%
Oglethorpe Avenue Elementary	210	53	25%
Timothy Road Elementary	268	113	42%
Whit Davis Elementary	221	61	28%
Whitehead Road Elementary	371	117	31%
Winterville Elementary	191	34	18%
Burney-Harris-Lyons Middle	453	114	25%
Clarke Middle	480	203	42%
W.R. Coile Middle	506	70	14%
Hilsman Middle	444	107	24%
District	4905	1355	28%

Indicator 2

Reading Attainment on Instructional Level (3-8)

School	White	Asian	Black	Hispanic	Multi-Racial	English Learners	Special Education	Gifted
Alps Road Elementary	56%	0%	6%	10%	12%	0%	0%	39%
Barnett Shoals Elementary	70%	75%	18%	20%	31%	13%	13%	86%
Barrow Elementary	67%	27%	3%	42%	33%	15%	17%	86%
Chase Street Elementary	82%	100%	5%	37%	71%	17%	22%	91%
Cleveland Road Elementary	40%	100%	9%	21%	17%	3%	4%	77%
Fowler Drive Elementary	30%	—	12%	18%	0%	5%	9%	56%
Gaines Elementary	27%	50%	10%	14%	14%	8%	0%	71%
Howard B. Stroud Elementary	86%	—	11%	23%	40%	30%	10%	63%
Judia Jackson Harris Elementary	25%	0%	10%	19%	33%	8%	7%	56%
Oglethorpe Avenue Elementary	50%	—	14%	28%	37%	15%	8%	60%
Timothy Road Elementary	71%	37%	24%	25%	29%	15%	13%	85%
Whit Davis Elementary	55%	0%	7%	29%	50%	29%	6%	73%
Whitehead Road Elementary	72%	42%	17%	30%	38%	10%	9%	94%
Winterville Elementary	61%	—	12%	11%	11%	0%	8%	69%
Burney-Harris-Lyons	54%	58%	16%	22%	57%	3%	13%	69%
Clarke Middle	80%	50%	15%	40%	32%	0%	10%	90%
W.R. Coile Middle	26%	—	8%	17%	31%	0%	2%	71%
Hilsman Middle	65%	67%	10%	25%	41%	0%	7%	90%
District	67%	47%	12%	23%	34%	9%	8%	80%

Indicator 3

Math Attainment on Instructional Level (3-8)

School	# Enrolled	# Met Indicator	Percentage
Alps Road Elementary	179	7	4%
Barnett Shoals Elementary	232	52	22%
Barrow Elementary	247	88	36%
Chase Street Elementary	254	110	43%
Cleveland Road Elementary	141	24	17%
Fowler Drive Elementary	191	12	6%
Gaines Elementary	234	10	4%
Howard B. Stroud Elementary	157	15	10%
Judia Jackson Harris Elementary	217	28	13%
Oglethorpe Avenue Elementary	204	42	21%
Timothy Road Elementary	264	86	33%
Whit Davis Elementary	214	51	24%
Whitehead Road Elementary	366	79	22%
Winterville Elementary	185	23	12%
Burney-Harris-Lyons Middle	445	83	19%
Clarke Middle	463	134	29%
W.R. Coile Middle	501	56	11%
Hilsman Middle	436	84	19%
District	4898	983	20%

Indicator 3: Math Attainment on Instructional Level (3-8)

School	White	Asian	Black	Hispanic	Multi-Racial	English Learners	Special Education	Gifted
Alps Road Elementary	30%	-	2%	5%	0%	0%	0%	28%
Barnett Shoals Elementary	49%	75%	4%	15%	25%	7%	3%	65%
Barrow Elementary	51%	73%	1%	47%	33%	50%	23%	75%
Chase Street Elementary	64%	100%	3%	38%	50%	0%	14%	80%
Cleveland Road Elementary	44%	100%	11%	11%	0%	3%	0%	68%
Fowler Drive Elementary	13%	-	3%	10%	0%	2%	0%	35%
Gaines Elementary	10%	50%	2%	14%	0%	7%	0%	22%
Howard B. Stroud Elementary	50%	-	6%	3%	60%	5%	0%	45%
Judia Jackson Harris Elementary	38%	0%	2%	17%	0%	5%	0%	38%
Oglethorpe Avenue Elementary	46%	-	13%	19%	38%	11%	3%	58%
Timothy Road Elementary	56%	25%	17%	24%	18%	13%	6%	79%
Whit Davis Elementary	44%	50%	5%	29%	58%	14%	11%	78%
Whitehead Road Elementary	55%	42%	11%	19%	15%	6%	3%	72%
Winterville Elementary	41%	-	7%	11%	22%	0%	6%	68%
Burney-Harris-Lyons	39%	42%	13%	16%	23%	3%	7%	67%
Clarke Middle	60%	63%	5%	22%	22%	15%	8%	73%
W.R. Coile Middle	29%	-	3%	18%	13%	0%	5%	51%
Hilsman Middle	53%	100%	7%	21%	21%	0%	5%	67%
District	52%	58%	6%	17%	23%	7%	5%	67%

Indicator 4
PSAT Benchmark Attainment (Grade 10)

School	# Enrolled	# Met Indicator	Percentage
Cedar Shoals High	291	96	33%
Clarke Central High	437	192	43.9%
Classic City High	13	0	0%
District	568	236	41.5%

Indicator 4
PSAT Benchmark Attainment (Grade 10)

School	White	Asian	Black	Hispanic	Multi-Racial	English Learners	Special Education	Gifted
Cedar Shoals High	78%	75%	27%	27%	30%	13%	9%	91%
Clarke Central High	76%	91%	20%	32%	54%	13%	14%	89%
Classic City High	0%	-	0%	-	-	-	-	-
District	74%	85%	28%	31%	45%	16%	15%	88%

Indicator 5

Benchmark Attainment on SEL Core Competencies

School	Percentage
Alps Road	74%
Barnett Shoals	80%
Barrow	81%
Chase Street	86%
Cleveland Road	81%
Fowler Drive	76%
Gaines	80%
Howard B. Stroud	82%
Judia Jackson Harris	80%
Oglethorpe Avenue	80%
Timothy Road	82%
Whit Davis	77%
Whitehead Road	88%
Winterville	81%
District Elementary	81%

Indicator 5
Benchmark Attainment on SEL Core Competencies

School	White	Asian	Black	Hispanic	Multi-Racial
Alps Road	75%	69%	75%	74%	71%
Barnett Shoals	79%	88%	81%	82%	80%
Barrow	82%	81%	80%	80%	77%
Chase Street	87%	-	87%	87%	82%
Cleveland Road	85%	-	78%	85%	81%
Fowler Drive	80%	-	76%	78%	71%
Gaines	72%	92%	80%	82%	78%
Howard B. Stroud	84%	-	82%	87%	79%
Judia Jackson Harris	78%	-	77%	82%	75%
Oglethorpe Avenue	78%	-	79%	82%	82%
Timothy Road	83%	85%	82%	83%	80%
Whit Davis	79%	-	75%	80%	79%
Whitehead Road	89%	87%	89%	89%	86%
Winterville	82%	-	80%	81%	80%
District Elementary	81%	81%	80%	81%	79%

Indicator 5
Benchmark Attainment on SEL Core Competencies

School	Percentage
Burney-Harris-Lyons Middle	82%
Clarke Middle	80%
W. R. Coile Middle	80%
Hilsman Middle	81%
Cedar Shoals High	80%
Clarke Central High	81%
Classic City High	81%
District Secondary	81%

Indicator 5
Benchmark Attainment on SEL Core Competencies

School	White	Asian	Black	Hispanic	Multi-Racial	Special Education	Gifted
Burney-Harris-Lyons MS	83%	81%	82%	81%	82%	82%	81%
Clarke Middle	81%	78%	79%	80%	80%	79%	81%
W.R. Coile Middle	81%	-	80%	80%	77%	79%	80%
Hilsman Middle	80%	78%	81%	82%	79%	81%	81%
Cedar Shoals High	82%	80%	80%	80%	80%	78%	79%
Clarke Central High	82%	78%	80%	81%	79%	79%	81%
Classic City High	79%	-	80%	82%	84%	81%	82%
District Secondary	81%	81%	80%	81%	79%	81%	80%

Indicator 6
Advanced Algebra Completion by End of Grade 10

School	# Enrolled	# Met Indicator	Percentage
Cedar Shoals High	318	107	34%
Clarke Central High	427	161	38%
Classic City High	20	6	30%
District	773	275	36%

Indicator 6
Advanced Algebra Completion by End of Grade 10

School	White	Asian	Black	Hispanic	Multi-Racial	English Learners	Special Education	Gifted
Cedar Shoals High	61%	80%	28%	31%	13%	17%	22%	
Clarke Central High	63%	73%	22%	34%	22%	17%	9%	
Classic City High	0%	-	29%	0%	67%	0%	25%	
District	62%	75%	25%	33%	24%	16%	16%	

Indicator 7a
Advanced Placement Credit (Score of 3+) Upon Graduation

School	# Enrolled	# Met Indicator	Percentage
Cedar Shoals High	242	131	54%
Clarke Central High	341	170	50%
Classic City High	35	1	3%
District	618	302	49%

Indicator 7a
Advanced Placement Credit (Score of 3+) Upon Graduation

School	White	Asian	Black	Hispanic	Multi-Racial	English Learners	Special Education
Cedar Shoals High	86%	100%	37%	67%	66%	58%	17%
Clarke Central High	86%	55%	32%	47%	65%	29%	3%
Classic City High	0%	-	0%	10%	0%	0%	0%
District	80%	62%	32%	53%	61%	34%	7%

Indicator 7b
Dual Enrollment Credit Upon Graduation

School	# Enrolled	# Met Indicator	Percentage
Cedar Shoals High	242	50	21%
Clarke Central High	341	66	19%
Classic City High	35	2	6%
District	618	118	19%

Indicator 7b
Dual Enrollment Credit Upon Graduation

School	White	Asian	Black	Hispanic	Multi-Racial	English Learners	Special Education
Cedar Shoals High	30%	0%	23%	13%	11%	8%	17%
Clarke Central High	21%	36%	19%	14%	24%	5%	0%
Classic City High	0%	-	0%	0%	50%	0%	0%
District	23%	31%	20%	12%	23%	5%	5%

Indicator 7c
Completion of Career Pathway Upon Graduation

School	# Enrolled	# Met Indicator	Percentage
Cedar Shoals High	242	58	24%
Clarke Central High	341	73	21%
Classic City High	35	1	3%
District	618	132	21%

Indicator 7c
Completion of Career Pathway Upon Graduation

School	White	Asian	Black	Hispanic	Multi-Racial	English Learners	Special Education
Cedar Shoals High	14%	0%	26%	28%	27%	8%	11%
Clarke Central High	21%	36%	20%	18%	41%	10%	11%
Classic City High	0%	-	7%	0%	0%	0%	0%
District	15%	20%	23%	22%	35%	8%	9%

Indicator 8

Attainment of a Score of 1040 on the SAT or 20 on the ACT

School	# Enrolled	# Met Indicator	Percentage
Cedar Shoals High	202	61	30%
Clarke Central High	286	132	46%
Classic City High	5	2	40%
District	489	194	40%

Indicator 8

Attainment of a Score of 1040 on the SAT or 20 on the ACT

School	White	Asian	Black	Hispanic	Multi-Racial	English Learners	Special Education	Gifted
Cedar Shoals High	71%	100%	15%	35%	43%	0%	0%	79%
Clarke Central High	83%	69%	23%	34%	50%	14%	15%	92%
Classic City High	100%	100%	0%	-	-	-	-	-
District	80%	74%	19%	35%	46%	11%	12%	87%

TRANSFORMATION

Implementing system reform is challenging, time-consuming work. The first step in transforming a school system is changing the mindset and perspective of the internal and external stakeholders. The district has instituted a metric-driven and results-oriented strategic plan.

School district leaders are charged with developing and supervising efforts to reduce achievement gaps and increase educational benefits for all children. To accomplish this work requires monitoring, evaluating, and fine-tuning programs and practices to reduce inequities (Duke 2010). To that end, the following changes have been implemented:

1. New elementary school literacy program
2. New instructional framework outlining the expectations of instructional delivery
3. Partnership with the University of Virginia for executive leadership training and reforming district conditions to better support all our schools
4. Participation of three schools in the Growing Readers Program from the Governor's Office of Student Achievement
5. Eighteen schools engaged in Advancement Via Individual Determination (AVID)
6. Reorganizing the district office to better support our principals
7. Reexamining and reforming after-school programming to better support the extension of academic enrichment and social-emotional support of all students
8. Creation of Community Schools in high-need school communities

CONCLUSION

Now more than ever, the community needs a school district committed to providing *every* child full access to the American Dream (Hochschild & Scovronick 2003). Too often, schools reinforce the racial and class inequality of our society. We are in need of educators and community advocates who will persevere and guide our students toward achieving greater gains and success in our schools (Hochschild & Scovronick 2003). There is no other option but to continue this urgent and challenging work. The future of our children, our families, and our community depends on it.

It is critical to remember that education is a form of social policy — a means by which the society distributes power and privilege. The public schools are the most proficient social institutions in adhering to the dictates of the dominant power structure (Scott 1980). It is our moral duty as a school district to shatter the unforgiving chains of low student achievement for the students in our school district, by all means necessary.