

Algebra II – Day 30  
 Formative Ticket  
 Square Root Functions

In Exercises 3–8, match the function with its graph.

3.  $f(x) = \sqrt{x+3}$

4.  $h(x) = \sqrt{x} + 3$

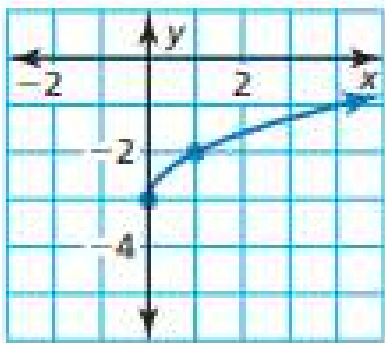
5.  $f(x) = \sqrt{x-3}$

6.  $g(x) = \sqrt{x} - 3$

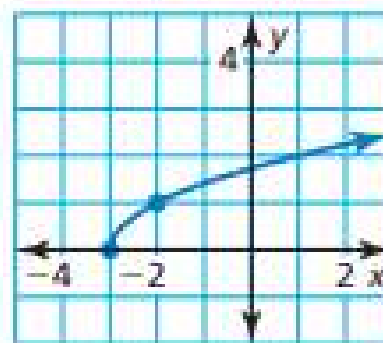
7.  $h(x) = \sqrt{x+3} - 3$

8.  $f(x) = \sqrt{x-3} + 3$

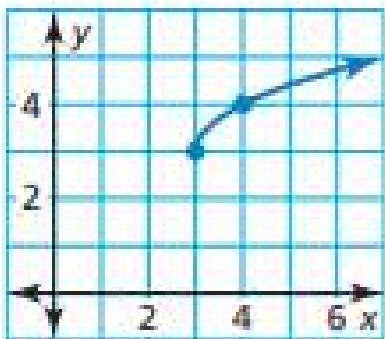
A.



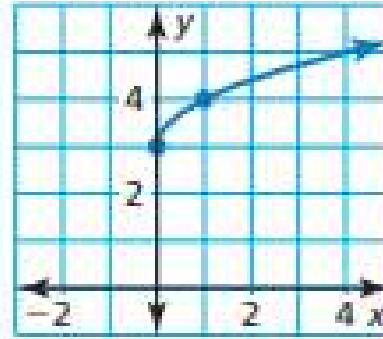
B.



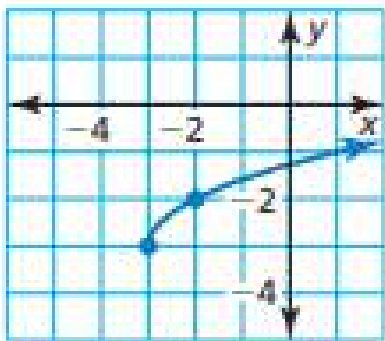
C.



D.



E.



F.

