

# DENMARK HIGH SCHOOL

DENMARK HS 101



HOME OF THE DANES !

# CONSTRUCTION UPDATE – AERIAL SHOT



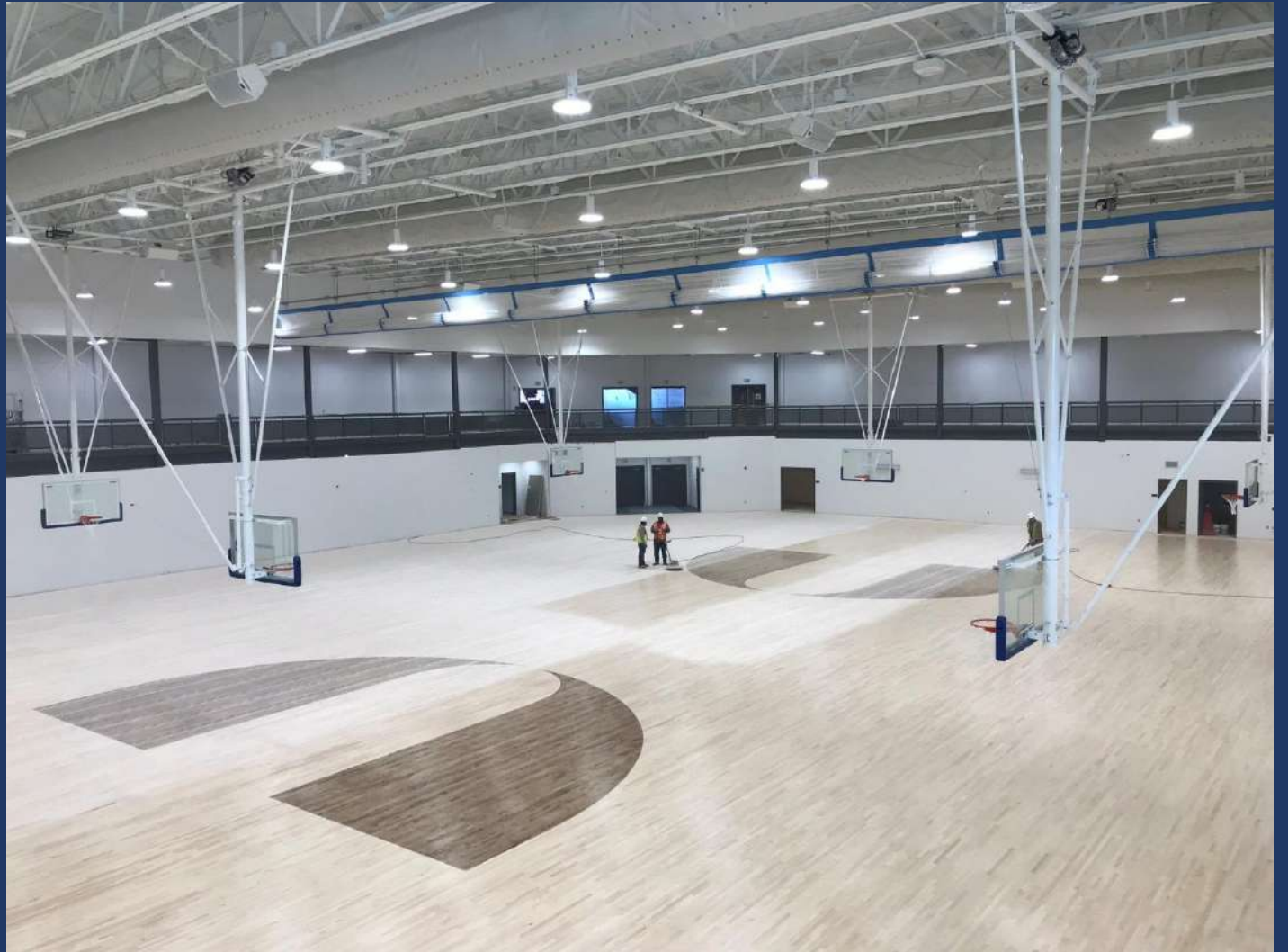
**Barton  
Malow**  
Construction Services

*Denmark High School*

Print #180114084  
Date: 01/14/18  
Lat/Lon: 34.147701 -84.229982  
Order No. 61436  
 Aerial Photography, Inc. 954-568-0484



# CONSTRUCTION UPDATE – GYM



# CONSTRUCTION UPDATE – CHORUS



# CONSTRUCTION UPDATE – AUDITORIUM





# CONSTRUCTION UPDATE – BAND ROOM



# CONSTRUCTION UPDATE – SCIENCE CLASSROOM



# CONSTRUCTION UPDATE – MATH CLASSROOM





## GENERAL INFORMATION



- THE SIXTH TRADITIONAL HIGH SCHOOL IN THE DISTRICT
- NAMED AFTER DR. LEILA DENMARK
- LOCATED BETWEEN FOWLER AND MULLINAX ROADS SOUTH OF MIDWAY ES, AND WILL EVENTUALLY BE HOME TO 2,500 STUDENTS
- OPENING IN FALL 2018 WITH GRADES 9 – 11
- PRINCIPAL – HEATHER GORDY
- MASCOT – GREAT DANES
- SCHOOL COLORS – CAROLINA BLUE, NAVY, AND WHITE



## DR. LEILA DENMARK – PHYSICIAN

- BORN IN PORTAL, GEORGIA IN 1898
- 3<sup>RD</sup> OF 12 CHILDREN
- STUDIED CHEMISTRY AND PHYSICS AT TIFT COLLEGE AND MERCER UNIVERSITY
- GRADUATED FROM THE MEDICAL COLLEGE OF GEORGIA IN 1928 AS THE ONLY WOMEN IN THE CLASS
- SHE IS CREDITED AS A CO-DEVELOPER OF THE VACCINE TO CURE WHOOPING COUGH
- BOOK – *EVERY CHILD SHOULD HAVE A CHANCE*
- AMONG THE FIRST DOCTORS TO OBJECT TO ADULTS SMOKING AROUND CHILDREN AND TO PREGNANT WOMEN USING DRUGS



## DR. LEILA DENMARK







## DR. LEILA DENMARK – PHYSICIAN

- ON HER 100<sup>TH</sup> BIRTHDAY IN 1998, SHE REFUSED BIRTHDAY CAKE STATING THERE WAS TOO MUCH SUGAR IN IT.
- RAN AN OFFICE OUT OF A FARMHOUSE NEAR HER HOME
- SHE KEPT COSTS DOWN BY USING A SIGN UP SHEET IN PLACE OF HIRING A RECEPTIONIST
- SHE ONLY CHARGED \$10 A VISIT
- KNOWN AS A SERVANT LEADER THAT DEDICATED HER LIFE TO HELPING CHILDREN AND FAMILIES
- 1953 NAMED ATLANTA WOMAN OF THE YEAR
- PASSED AWAY IN 2012 AT THE AGE OF 114

OFFICIAL LOGOS

DENM  RK

HIGH SCHOOL



# DENMARK HIGH SCHOOL 101



ALL REGISTRATION  
INFORMATION WILL BE POSTED  
ON THE DENMARK WEBPAGE  
UNDER STUDENT SERVICES TAB –  
COUNSELING

FORMS/DATES/DEADLINES/MEETINGS/LINKS/APPLICATIONS



# DENMARK HIGH SCHOOL 101

## KEYS TO CONSIDER IN CLASS SELECTION:

- PASSIONS/INTERESTS
- FUTURE PLANS/GOALS
- HOPE REQUIREMENTS/RIGOR/GPA
- MOTIVATION/PERSISTENCE/DETERMINATION
- WORK HABITS
- ACTIVITIES: SCHOOL ORGANIZATIONS, ATHLETICS, LEADERSHIP POSITIONS, COMMUNITY INVOLVEMENT

FIND A HEALTHY BALANCE!





# DENMARK HIGH SCHOOL 101

## GRADUATION REQUIREMENTS

23 CREDITS

ENGLISH: 4 CREDITS

MATH: 4 CREDITS

SCIENCE: 4 CREDITS

SOCIAL STUDIES: 3 CREDITS

CAREER/WORLD LANG./FINE ARTS: 3 CREDITS

HEALTH/PERSONAL FITNESS

# DENMARK HIGH SCHOOL 101

SCHOOL DAY: 8:25 – 3:40

CLASS SCHEDULE - MODIFIED BLOCK WITH 7 CLASS PERIODS

MON/TUES/FRI: PERIODS 1 - 7 (50 MIN)

WEDNESDAY: PERIODS 2, IF, 4, 6 (90 MIN)

THURSDAY: PERIODS 1, 3, 5, 7 (90 MIN)

IF – INSTRUCTIONAL FOCUS

CLASS MEETINGS, REMEDIATION, EXTRA-HELP, COLLEGE  
VISITS, ENRICHMENT, SEAD





# DENMARK HIGH SCHOOL 101

## CREDITS/UNITS

YEAR-LONG COURSE - 1.0 CREDIT

HALF-YEAR COURSE - .50 CREDIT

CREDIT IS AWARDED AT THE CONCLUSION OF THE COURSE (JANUARY/MAY)

## GRADING SCALE

### REGULAR/HONORS

A	90 – 100	4.0
B	80 – 89	3.0
C	70 – 79	2.0

### AP/DUAL ENROLLMENT

A	90 – 100	5.0
B	80 – 89	4.0
C	70 – 79	3.0

FORMATIVE GRADES: 25%

SUMMATIVE GRADES: 75%

REPORT CARDS EVERY 9 WEEKS



# DENMARK HIGH SCHOOL 101

## END OF COURSE TESTS

20 % OF FINAL GRADE



PHYSICAL SCIENCE (8<sup>TH</sup> GR)

BIOLOGY

9<sup>TH</sup> LIT/COMP

ALGEBRA I

GEOMETRY

AMERICAN LITERATURE

US HISTORY

ECONOMICS

# DENMARK HIGH SCHOOL 101

## POST SECONDARY ADMISSION TESTING



### PSAT – PRACTICE SAT FOR GRADES 9, 10, AND 11

- TEST IS ADMINISTERED EACH OCTOBER DURING THE SCHOOL DAY.
- ALL 10<sup>TH</sup> GRADE STUDENTS TAKE THE TEST WITH THE FEE PAID FOR BY THE STATE.
- ALL 9<sup>TH</sup> AND 11<sup>TH</sup> GRADE STUDENTS ARE ENCOURAGED TO TAKE THE TEST EACH YEAR.
- 11<sup>TH</sup> GRADE STUDENTS CAN QUALIFY FOR NATIONAL MERIT SCHOLARSHIPS.

### SAT AND ACT – GRADES 11 AND 12

- STUDENTS ARE RECOMMENDED TO TAKE BOTH ASSESSMENTS.



# DENMARK HIGH SCHOOL 101



## HOPE SCHOLARSHIP ELIGIBILITY

- 3.0 CORE GPA (ENGLISH, MATH, SCIENCE, SOCIAL STUDIES, WORLD LANGUAGE COURSES)
- 4 RIGOR COURSES

## ZELL MILLER ELIGIBILITY

- FULL TUITION AT GEORGIA PUBLIC POST-SECONDARY COLLEGES
- 3.7 CORE GPA, 1200 MATH/ELA COMBINED ON ONE SAT, OR 26 ACT COMPOSITE
- [WWW.GAFUTURES.ORG](http://WWW.GAFUTURES.ORG)

# DENMARK HIGH SCHOOL 101



## ADVANCED PLACEMENT (AP) COURSES

- TAKEN IN HIGH SCHOOL FOR POTENTIAL COLLEGE CREDIT
- AP EXAM: NATIONAL EXAM TAKEN AT THE END OF THE COURSE (MAY)
- SCORING: 1-2-3-4-5, MOST COLLEGES ACCEPT 3-4-5 SCORES FOR CREDIT
- [COLLEGE BOARD AP CREDIT SEARCH TOOL](#)



# ADVANCED PLACEMENT COURSE OFFERINGS

## ENGLISH

AP AMERICAN LITERATURE/LANG  
AP LITERATURE (2019-20)  
AP CAPSTONE SEMINAR  
AP CAPSTONE RESEARCH (2019-20)

## SCIENCE

AP BIOLOGY  
AP ENVIRONMENTAL SCIENCE  
AP CHEMISTRY  
AP PHYSICS 1  
AP PHYSICS 2  
AP PHYSICS C-MECHANICS

## MATH

AP STATISTICS  
AP CALCULUS AB  
AP CALCULUS BC  
AP CALCULUS AB/BC  
DL CALCULUS

## SOCIAL STUDIES

AP HUMAN GEOGRAPHY –ELECTIVE  
AP WORLD HISTORY  
AP US HISTORY  
AP PSYCHOLOGY -ELECTIVE  
AP EUROPEAN HISTORY –ELECTIVE  
AP MACROECONOMICS (2019-20)  
AP MICROECONOMICS (2019-20)  
AP GOVERNMENT (2019-20)

## MODERN LANGUAGE

AP SPANISH LANGUAGE  
AP LATIN  
AP FRENCH  
AP GERMAN

## OTHER AP OFFERINGS

AP COMPUTER SCIENCE PRINCIPLES  
AP COMPUTER SCIENCE A  
AP STUDIO: 2D DESIGN (2019-20)  
AP STUDIO: 3D DESIGN (2019-20)  
AP STUDIO: DRAWING (2019-20)

*Subject to change depending on student interest*

# DENMARK HIGH SCHOOL 101



## DUAL ENROLLMENT

- COLLEGE COURSES TAKEN FOR BOTH HIGH SCHOOL AND COLLEGE CREDIT.
- ANY GRADE LEVEL CAN PARTICIPATE WITH MEETING COLLEGE ADMISSIONS REQUIREMENTS.
- FULL-TIME
- PART-TIME
- [WWW.GAFUTURES.ORG](http://WWW.GAFUTURES.ORG)

# DENMARK HIGH SCHOOL 101



## ON-LINE LEARNING OPTIONS

GEORGIA VIRTUAL SCHOOL:

<http://gavirtualschool.org/>

- IN YOUR CLASS SCHEDULE DURING THE REGULAR SCHOOL DAY (NO COST)
- OUTSIDE OF SCHOOL DAY (STUDENT PAY)
- SUMMER (STUDENT PAY)-CHECK DENMARK WEBPAGE FOR REGISTRATION INFORMATION

FORSYTH VIRTUAL ACADEMY:

- FLEXIBLE ON-LINE LEARNING –FULL OR PART TIME
- NO COST

<https://www.forsyth.k12.ga.us/fva>



GRADE 9

ENGLISH

9<sup>TH</sup> LITERATURE/COMPOSITION

9<sup>TH</sup> LITERATURE/COMPOSITION HONORS



# GRADE 9

## MATH



FOUNDATIONS OF ALGEBRA

GSE ALGEBRA I

GSE ALGEBRA I AND SUPPORT – 2 PERIODS

GSE ACCELERATED ALGEBRA I/GEOMETRY A HONORS

GSE ACCELERATED GEOMETRY B/ALGEBRA II HONORS

GSE GEOMETRY



GRADE 9

SCIENCE

BIOLOGY

BIOLOGY HONORS



## GRADE 9

### SOCIAL STUDIES

SOCIAL STUDIES IS NOT REQUIRED IN 9<sup>TH</sup> GRADE, BUT STUDENTS CAN TAKE WORLD GEOGRAPHY AS AN ELECTIVE OPTION.

WORLD GEOGRAPHY

WORLD GEOGRAPHY/DRIVER ED.

AP HUMAN GEOGRAPHY



GRADE 9

## WORLD LANGUAGE

SPANISH I  
SPANISH II  
LATIN I  
FRENCH I  
GERMAN I

ADDITIONAL WORLD LANGUAGE OPTIONS OFFERED THROUGH GEORGIA  
VIRTUAL SCHOOL ON-LINE PLATFORM



# DENMARK HIGH SCHOOL 101

## GRADE 9 SAMPLE SCHEDULE



9<sup>TH</sup> LIT/COMP

BIOLOGY

GSE ALGEBRA I

HEALTH/PERSONAL FITNESS

INTRO TO DIGITAL TECHNOLOGY

BAND

DRIVER ED/WORLD GEOGRAPHY

# DENMARK HIGH SCHOOL 101

## GRADE 9 SAMPLE SCHEDULE



9<sup>TH</sup> LIT/COMP HONORS

BIOLOGY HONORS

ACCELERATED ALGEBRA I/ GEOMETRY A HON

HEALTH/PERSONAL FITNESS

LATIN I

AP HUMAN GEOGRAPHY

BASIC AGRICULTURE SCIENCE

# DENMARK HIGH SCHOOL 101

## GRADE 9 SAMPLE SCHEDULE



9<sup>TH</sup> LIT/COMP HONORS

BIOLOGY HONORS

ACCELERATED ALGEBRA I/GEOM A HONORS

HEALTH/PERSONAL FITNESS

AP HUMAN GEOGRAPHY

SPANISH II

VISUAL ARTS I

# DENMARK HIGH SCHOOL 101

## GRADE 9 SAMPLE SCHEDULE



9<sup>TH</sup> LIT/COMP

BIOLOGY

GSE ALGEBRA I

ALGEBRA I SUPPORT

HEALTH/PERSONAL FITNESS

FOUNDATIONS OF ENGINEERING

WORLD GEOGRAPHY

# ELECTIVE PATHWAY OPTIONS

## BUSINESS AND TECHNOLOGY – ENTREPRENEURSHIP

INTRO TO BUSINESS AND TECHNOLOGY

LEGAL ENVIRONMENT OF BUSINESS

ENTREPRENEURSHIP







# ELECTIVE PATHWAY OPTIONS

## BUSINESS AND TECHNOLOGY – FINANCIAL LITERACY

INTRO TO BUSINESS AND TECHNOLOGY

FINANCIAL LITERACY

BANKING, INVESTING, INSURANCE



# ELECTIVE PATHWAY OPTIONS

## CULINARY ARTS

INTRO TO CULINARY ARTS

CULINARY ARTS I

CULINARY ARTS II



# ELECTIVE PATHWAY OPTIONS

## INFORMATION TECH – WEB DEVELOPMENT

INTRO TO DIGITAL TECHNOLOGY

COMPUTER SCIENCE PRINCIPLES

WEB DEVELOPMENT



# ELECTIVE PATHWAY OPTIONS

## INFORMATION TECH – COMPUTER SCIENCE

INTRO TO DIGITAL TECHNOLOGY

AP COMPUTER SCIENCE PRINCIPLES

AP COMPUTER SCIENCE A



# ELECTIVE PATHWAY OPTIONS

## ENGINEERING AND TECHNOLOGY

FOUNDATIONS OF ENGINEERING

SURVEY OF ENGINEERING CONCEPTS

ENGINEERING APPLICATIONS

RESEARCH, DESIGN, PROJECT MANAGEMENT





ELECTIVE PATHWAY OPTIONS

MARKETING MANAGEMENT

MARKETING PRINCIPLES

MARKETING AND ENTREPRENEURSHIP

MARKETING MANAGEMENT



# ELECTIVE PATHWAY OPTIONS

## SPORTS AND ENTERTAINMENT MARKETING

### MARKETING PRINCIPLES

### INTRO TO SPORTS AND ENTERTAINMENT MARKETING

### ADV. SPORTS AND ENTERTAINMENT MARKETING



## ELECTIVE PATHWAY OPTIONS

FASHION, MERCHANDISING, RETAILING

MARKETING PRINCIPLES

FASHION, MERCHANDISING, RETAILING

ADV. FASHION, MERCHANDISE, RETAILING

# ELECTIVE PATHWAY OPTIONS

## TEACHING AS A PROFESSION

EXAMINING THE TEACHING PROFESSION

CONTEMPORARY ISSUES IN EDUCATION  
(TEACHING PRACTICUM – 2 PERIODS)





# ELECTIVE PATHWAY OPTIONS

## VETERINARY SCIENCE

### BASIC AGRICULTURE SCIENCE

### ANIMAL SCIENCE AND BIOCHEMISTRY

(19 – 20 SCHOOL YEAR)

## VETERINARY SCIENCE

(20 – 21 SCHOOL YEAR)

# ELECTIVE PATHWAY OPTIONS

## VISUAL ARTS



VISUAL ARTS I

VISUAL ARTS II

VISUAL ARTS III

SCULPTURE I

SCULPTURE II

SCULPTURE III

SCULPTURE IV

MEDIA ARTS I

AP STUDIO: 2D DESIGN (19 – 20 SCHOOL YEAR)

AP STUDIO: 3D DESIGN (19 – 20 SCHOOL YEAR)

AP STUDIO: DRAWING (19 – 20 SCHOOL YEAR)

# ELECTIVE PATHWAY OPTIONS

## PERFORMING ARTS



ADV. CHORAL ENSEMBLE

ADVANCED DRAMA

ACTING

MUSICAL THEATER

TECHNICAL THEATER

MASTERY BAND

PERCUSSION

ETHNIC MUSIC STUDIES – FLAG-LINE



# ELECTIVE PATHWAY OPTIONS

## PHYSICAL EDUCATION



ADV. PHYSICAL CONDITIONING – WEIGHT TRAINING

ADV. TEAM SPORTS

DRIVER ED/ ADV. TEAM SPORTS

DRIVER ED/WORLD GEOGRAPHY

# ELECTIVE PATHWAY OPTIONS

## JOURNALISM/YEARBOOK



THIS COURSE INTRODUCES STUDENT TO THE PRODUCTION OF THE NEWSPAPER OR YEARBOOK. STUDENTS WILL EXPLORE CAREERS IN PRINT MEDIA AS WELL AS MASS MEDIA AS A WHOLE.

APPLICATION REQUIRED

# ATHLETIC TEAMS

## FALL

FOOTBALL

CROSS COUNTRY – B/G

SOFTBALL

VOLLEYBALL

COMPETITION CHEERLEADING

FOOTBALL CHEERLEADING

MARCHING BAND

## WINTER

BASKETBALL – B/G

WRESTLING

SWIM – B/G

BASKETBALL CHEERLEADING

## SPRING

BASEBALL

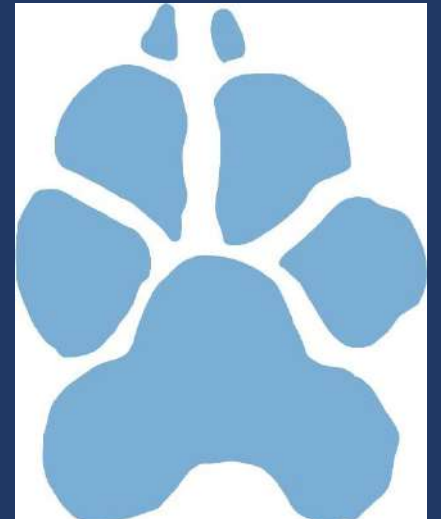
LACROSSE – B/G

TRACK AND FIELD – B/G

SOCCER – B/G

GOLF – B/G

TENNIS – B/G



# ATHLETIC LETTERS



ALL DENMARK STUDENTS THAT HAVE  
EARNED A VARSITY LETTER IN THEIR  
PREVIOUS SCHOOL WILL BE AWARDED A  
DENMARK LETTER.

# MEETINGS/HELP

## REGISTRATION AND TRANSITION DATES/EVENTS GRADE 9

MEET WITH DESANA 8<sup>TH</sup> GRADE STUDENTS – FEBRUARY 5<sup>TH</sup>  
MEET WITH PINEY GROVE 8<sup>TH</sup> GRADE STUDENTS – FEBRUARY 15<sup>TH</sup>

RISING 9<sup>TH</sup> GRADE PARENT NIGHTS  
A – K ON FEBRUARY 7<sup>TH</sup> AT 6:30 PM  
L – Z ON FEBRUARY 8<sup>TH</sup> AT 6:30 PM

Q & A ONLINE

FEBRUARY 20-21-22 AND 27 FROM 6:30 PM – 7:30 PM





# REGISTRATION – PORTAL

## PARENT PORTAL

TEACHERS ARE MAKING COURSE RECOMMENDATIONS IN THE FOLLOWING AREAS: ELA, MATH, SCIENCE, SOC. ST., WORLD LANGUAGE, CAREER PATHWAYS.

STUDENTS/PARENTS WILL BE ABLE TO VIEW RECOMMENDATIONS

PORTAL OPENS - FEBRUARY 21<sup>ST</sup> AT 8:00 AM

STUDENTS WILL SELECT ELECTIVE OPTIONS AND 3 ALTERNATIVE CHOICES TO COMPLETE A 7 PERIOD CLASS SCHEDULE.

PORTAL CLOSES – FEB 28<sup>TH</sup> @ 4:00 PM

# REGISTRATION – COURSE WAIVER



STUDENT REQUESTS SHOWING ON PARENT PORTAL INDICATE THE COURSE RECOMMENDED BY THE STUDENT'S CURRENT TEACHER. SHOULD YOU DISAGREE OR NEED A CHANGE IN COURSE OR LEVEL, PLEASE COMPLETE THE ON-LINE CHANGE REQUEST WAIVER FORM.

LINK WILL BE AVAILABLE STARTING MARCH 5<sup>TH</sup> AT 8:00 AM AND WILL CLOSE MARCH 12<sup>TH</sup> AT 4:00 PM

WAIVER WILL BE LINKED ON THE REGISTRATION PAGE ON THE DENMARK HS WEBPAGE.



## PARKING

ALL STUDENTS THAT ARE 16 AND ELIGIBLE TO DRIVE CAN PURCHASE A PARKING PASS FOR DENMARK H.S.

- DRIVERS LICENSE
- PROOF OF INSURANCE
- CAR REGISTRATION

MORE INFORMATION WILL BE AVAILABLE ON THE DENMARK H.S. WEBSITE.



# SPRING –SUMMER DANE DAYS

DATES: TBA



- PICK UP CLASS SCHEDULE
- TOUR BUILDING
- PAY FEES (LOCKER, PE UNIFORM, LUNCH ACCOUNT)
- PARKING PASS PICK-UP
- PURCHASE SPIRIT WEAR
- BUS # AND ROUTE INFORMATION
- CLUBS, ACTIVITIES, ATHLETICS – MEET SPONSORS