

# Mission Possible: Graduation and Beyond



## **Class of 2021/2022 Advisement**

*Your student is soon to be a Junior or Sophomore and moving toward graduating...*

*This advisement program supports the state of Georgia BRIDGE Law Advisement and Individual Graduation Plan for each student.*

*Dr. Moore: Class of 2022 School Counselor*

*Ms. Holland- Class of 2021 School Counselor*



**Building Resourceful Individuals to  
Develop Georgia's Economy**

# BRIDGE Law

## Mandated Advisement Legislation



- ▶ This law mandates that certain tasks be completed on the Georgia Career Information System site to support all students career planning and decision making. Students have a GCIS account.

Where Success Begins...



Georgia Career Information Center



- ▶ This law mandates that students have a My GAfutures account. On this site high school students:
  - ▶ Request Transcripts be sent to colleges, universities and technical colleges
  - ▶ Review their My Gafutures HOPE GPA
  - ▶ Complete Dual Enrollment Processing
  - ▶ Use the College Search Feature as well as Apply to Colleges in Georgia
  - ▶ Use the Scholarship Feature
  - ▶ Learn about Financial Aid and Financial Aid and Financial Literacy topics

**GAfutures**  
Explore. Plan. Succeed.



# 10<sup>th</sup> Grade Students

- ▶ Took the PSAT in mid-October
- ▶ Will take the YouScience aptitude and interest assessment to help with their career planning- 2<sup>nd</sup> Semester
- ▶ Results will be sent to the students' email address that they create with their account.
- ▶ Website is [www.youscience.com](http://www.youscience.com)
- ▶ Will complete Dual Enrollment Guidance Session

## 9<sup>th</sup> and 10<sup>th</sup> grades

- ▶ Select course requests in IC based on their individual IGP's.

# Graduation Requirements

- ▶ 4 Units of English
- ▶ 4 Units of Mathematics
- ▶ 4 Units of Science
- ▶ 3 Units of Social Studies
- ▶ 3 Units of Career/Technology and/or World Language and/or Fine Arts
- ▶ 1 Unit of Health & Physical Education
- ▶ 4 Units of Electives (minimum)

**A total of 23 Units**

\*\*\*\*\*World Language (Foreign Language) is not required for Graduation BUT is required for acceptance into a 4 year College or University\*\*\*\*\*

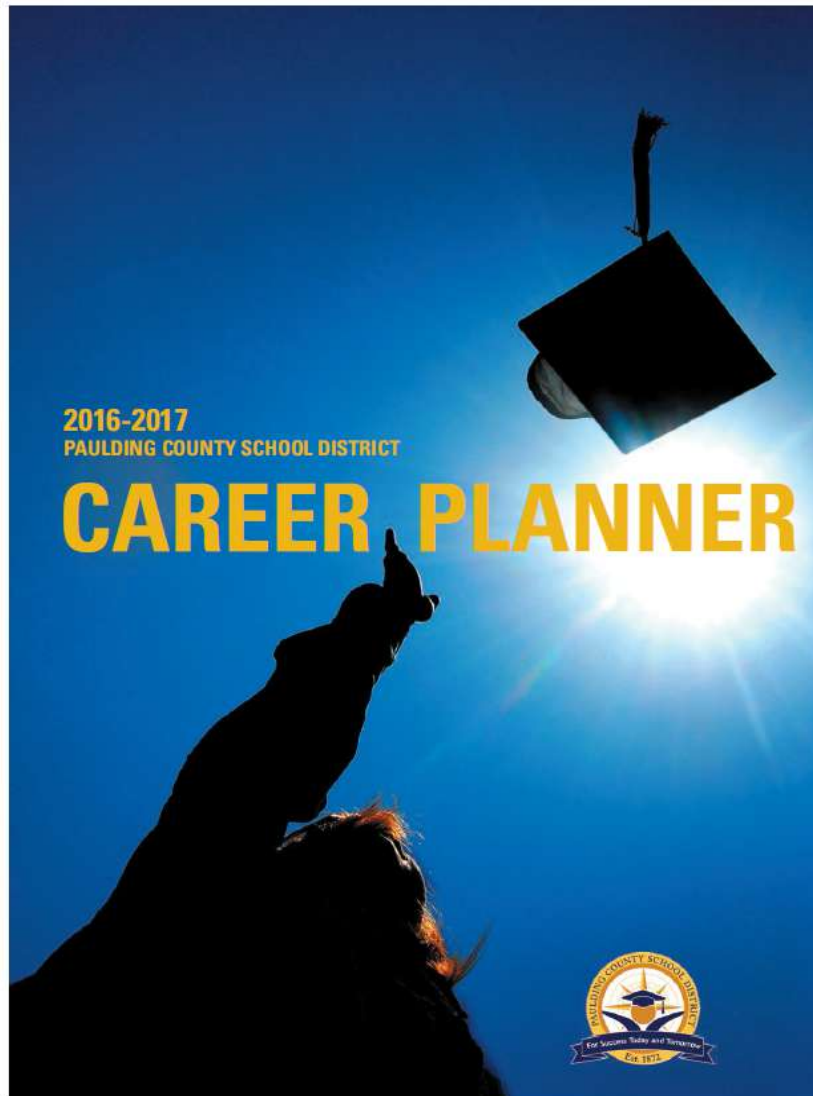


# Promotion



- ▶ Students are promoted to the next grade level based on credits earned.
- ▶ To participate in athletics students must pass 5 out of 7 classes this spring to be eligible for fall. Next year they would need to pass 3 out of 4 classes to be eligible on the block schedule.
  - ▶ **From 9th to 10th grade-5 credits**
  - ▶ **From 10<sup>th</sup> to 11<sup>th</sup> grade-11 credits**
  - ▶ From 11th to 12th grade-17 credits

# Important Resource for Career Clusters and Pathways in Our District



- ▶ On PCSD web page.
- ▶ It includes pathways-both general information about the pathway(s) and the three sequential courses that must be completed during high school.
- ▶ The Career Planner also includes which schools offer each pathway course in our district.
- ▶ Focus on CTAE Clusters and Pathways
- ▶ The last portion of the Career Planner has course descriptions in all of these sections:
  - ▶ English
  - ▶ Mathematics
  - ▶ Science
  - ▶ Social Studies
  - ▶ World Language
  - ▶ Fine Arts
  - ▶ Health and Personal Fitness





# Pathway/Plan of Study

- ▶ High school students declare a pathway or Plan of Study beginning in 8<sup>th</sup> grade.
- ▶ If a student is a CTAE pathway completer, the student takes 3 sequential courses in that pathway. A CTAE pathway completer also has the opportunity to take an End of Pathway Assessment
- ▶ A student is a pathway completer when he/she concentrates in the CTAE, Advanced Academic (English, Mathematics, Science, Social Studies), World Language and/or Fine Arts Pathway courses. Each student follows the GaDOE Plan of Study along with the BRIDGE Advisement Plan/Individual Graduation Plan



# Advanced Academic

## Advanced Academic Plan of Study/Pathway

Some students opt to take rigorous courses (AP or Dual Enrollment) in the area of English, Mathematics, Science or Social Studies. And, 2 World Language classes in same language.

*Students are strongly encouraged to select courses in one focused area of interest known as a Plan of Study and to build upon the career interest inventories that they have completed with counselors.*



# World Language

World Language- (French or Spanish @ EPHS)

Some students take a World Language course in the 9<sup>th</sup> grade. Two units in the same World (Foreign Language) is required to be admitted to a four-year college or university. A student may have a World Language Area of Focus in high school by completing 3 sequential World Language Courses

*Again, students are strongly encouraged to select courses in one focused area of interest known as a Plan of Study and to build upon the career interest inventories that they have completed with counselors.*



# Fine Arts

Fine Arts---Some students take either a visual or performing arts program as an elective course. Other students may want to complete a Fine Arts Pathway.

- Band
- Chorus
- Art
- Drama

# Honors and Advanced Placement Course Information for the CORE Academic Areas



# Possible Honor courses for 2019-2020

- Honors World Lit.
- Honors American Lit.
- Honors Brit. Lit.
- Honors Alg. II
- Honors Geometry
- Honors Pre-Calculus
- Honors World History
- Honors U.S. History
- Honors Econ.
- Honors Biology
- Honors Chemistry
- Honors Physics
- Honors Forensic Science



# Possible AP courses for 2018

- **AP Language**
- **AP Literature**
- **AP Calculus**
- **AP Statistics**
- **AP World History**
- **AP US History**
- **AP Biology**
- **AP Chemistry**
- **AP Physics**



# What is the process for getting into Honors/AP classes?

- ▶ **Teachers place students in the next academic level class based on performance this year. If you wish to change the level of your student's classes you can speak with the academic subject teacher.**
- ▶ **Please consider the teacher's recommendation before making the decision so that your child is able to do their best work in the following year.**
- ▶ **There is an Infinite Campus course request process during 2<sup>nd</sup> semester for electives that will begin after Winter break.**



# How are Advanced Placement/Honors classes beneficial to the student's GPA?

- ▶ Honors courses are weighted. With successful completion of the course, an average of 70 or above BEFORE weights are added, earns a student five (5) points onto the final course average.
- ▶ For example: Student earns an 80 in Honors American Literature – the report card and transcript will reflect an 85 as the weighted points are added to the final average.
- ▶ Advanced Placement courses add 10 points to the final grade, if a 70 or above has been earned.)



# Paulding Virtual Academy

Ms. Shelly Bachemin- New Hope Education Center

- District students may apply to the Paulding Virtual Academy beginning on April 1<sup>st</sup> for the next school year
- PVA student guidelines:
  - Need 2.5 or higher GPA
  - Need to be on-track for graduation
  - Courses are all online
  - Can take DE courses too
  - Can still participate in local school clubs, sports, etc.
  - May take Band, Chorus, JROTC and/or a 2<sup>nd</sup> or 3<sup>rd</sup> pathway course at the local high school

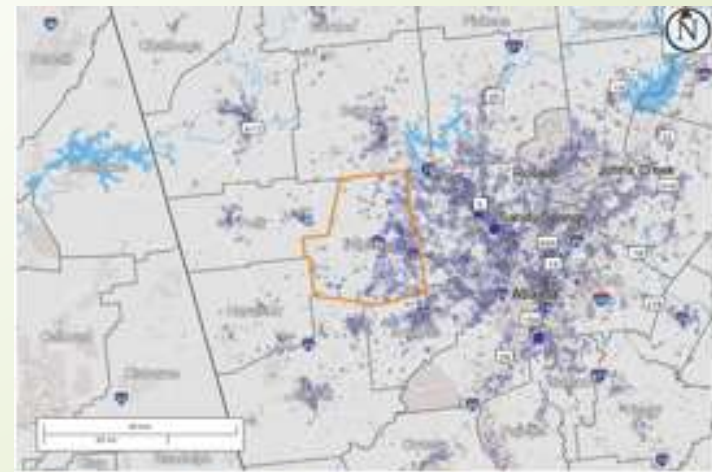
# What is the Paulding College and Career Academy?

- ▶ PCCA opens the Fall semester of 2019
- ▶ Students who attend PCCA graduate with a high school diploma plus have:
  - ▶ Dual Enrollment Course Opportunities
  - ▶ Work-Based Learning/Apprenticeship Program Courses
  - ▶ Complete a CTAE Pathway and related courses



# Looking at the need for the PCCA

- ▶ Our Needs assessment showed:
- ▶ 86% of Paulding County residents commute outside the county to work. Paulding County has the longest average commute of any county in Georgia.
- ▶ 60% of Paulding County's workforce does not reside in Paulding County.
- ▶ Where do Paulding County residents go to work each day?
  - ▶ Cobb Co.
  - ▶ Fulton Co.
  - ▶ Douglas Co.
  - ▶ Cherokee Co.
  - ▶ Bartow Co.



**Where Paulding residents work**

# PCCA Partners





# What are the Opportunities at the PCCA?

## Paulding College and Career Pathways

1. Healthcare
  - Patient Care Tech
2. Energy
  - Energy & Power: Generation, Transmission, and Distribution
3. 
  - Mechatronics
  - Industrial Maintenance
4. Information Technology
  - Cybersecurity





# Regional Partnership for a 5<sup>th</sup> Pathway

**Paulding College and Career Academy**

**In partnership with**

**Bartow County College and Career Academy**



**PAULDING  
COLLEGE & CAREER  
ACADEMY**



**BARTOW COUNTY  
COLLEGE & CAREER  
ACADEMY**

# HVACR Electrical Pathway PCCA

- Courses (all three) are Dual Enrollment Pathway Courses
- Courses are taught at the Bartow County College and Career Academy in Cartersville

# PCCA

Our vision for the Paulding College and Career Academy





# Application

Application with minimum requirements will be sent to schools and posted on the district and PCCA website in December.



# Transportation Information from the Local High School


- ▶ Transportation details from the five local high schools to the PCCA building will be provided during 2<sup>nd</sup> semester.



# What are the requirements to participate at PCCA?

- ▶ Application and requirement information will be finalized during second semester.
- ▶ If you are interested in any of the Career Pathways offered at PCCA, be sure that your middle school counselor knows about your interest as you finalize your Individual Graduation Plan.





# What if your student wanted to take a course Online during high school?

- ▶ During the months of April – Mid-July, there will be a PCSD online registration opportunity for high school courses.
- ▶ Senate Bill 289 allows districts to provide students in grades 3 through 12 the option of taking an online course should you choose that option.
- ▶ See your counselor if you are interested!



# Credit Recovery Courses (Recommended by School Counselor)

- ▶ If there is a need to take a credit recovery course due to failing a course, the counselor can help determine if this option is a good choice.
- ▶ Credit recovery courses can be taken during the school day or outside of the school day free of charge.
- ▶ New credit courses can only be taking during the school day free of charge. If taken outside of the day there is a charge. \$200 per .5 credit if on the A+ program and \$250 per .5 credit if on the Georgia Virtual Schools Program.

# What About Your IGP?

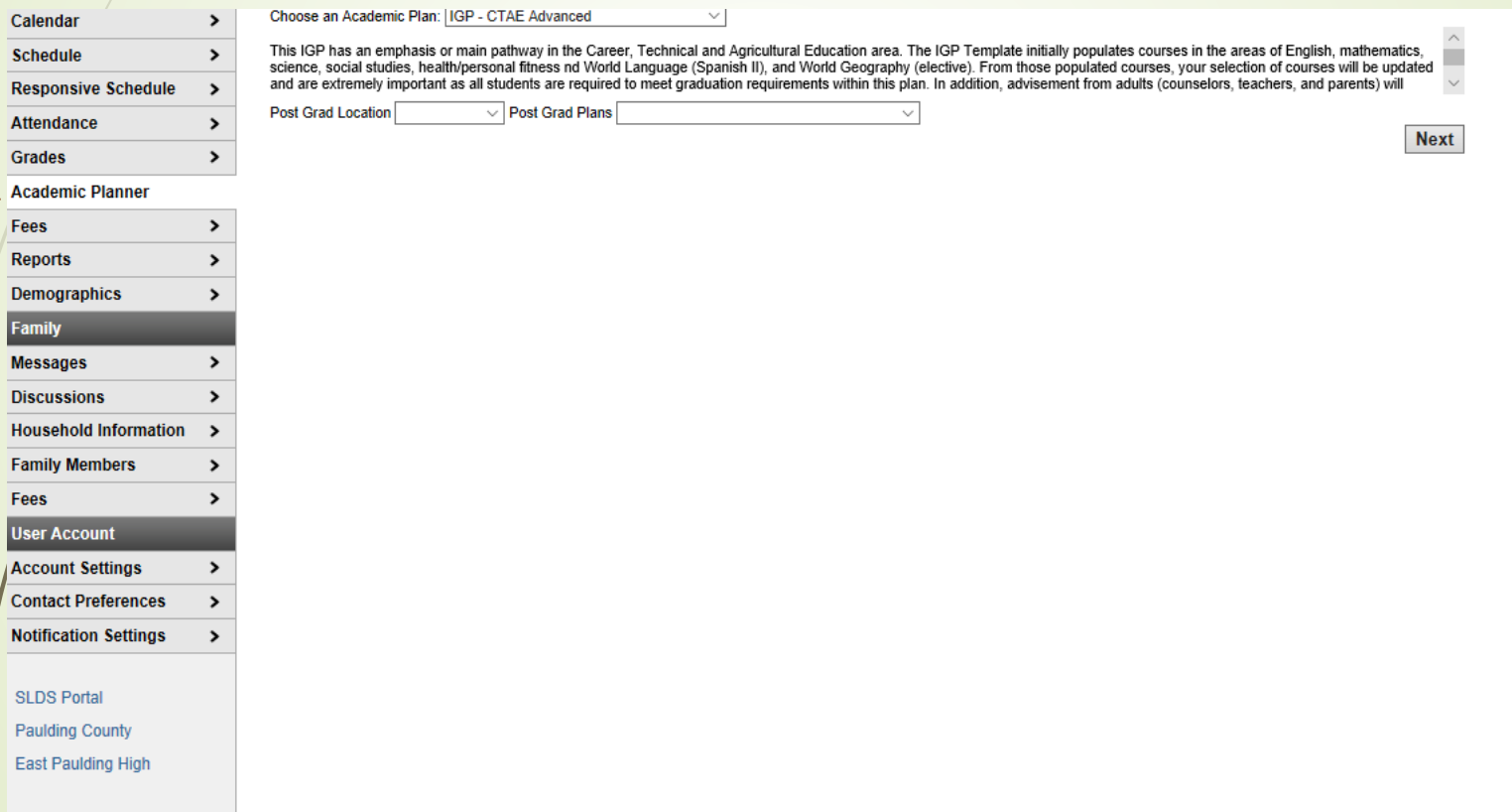
Program: IGP - CTAE Advanced

Grade: 09	Grade: 10	Grade: 11	Grade: 12
<b>ENGLISH (4.0 / 4.0)</b>			
2.0 / 1.0 23.0510000 HONORS NINTH LIT/COMP - 1.0 23.0530010 HONORS WORLD LIT/COMP - 1.0	1.0 / 1.0 23.0510010 HONORS AMERICAN LIT/COMP - 1.0	1.0 / 1.0 23.0520010 HONORS BRITISH LIT/COMP - 1.0	1.0 / 1.0 23.0340000 ADVANCED COMPOSITION - 1.0
1.0 credit overflow to ELECTIVE			
<b>MATHEMATICS (4.0 / 4.0)</b>			
1.0 / 1.0 27.0090000 GSE ALGEBRA I - 1.0	1.0 / 1.0 27.0091000 GSE GEOMETRY - 1.0	1.0 / 1.0 27.0092000 GSE ALGEBRA II - 1.0	1.0 / 1.0 27.0074000 GSE PRE-CALCULUS - 1.0
<b>SCIENCE (4.0 / 4.0)</b>			
1.0 / 1.0 26.0120000 BIOLOGY - 1.0	1.0 / 1.0 40.0510000 CHEMISTRY I - 1.0	1.0 / 1.0 40.0010000 PHYSICS - 1.0	1.0 / 1.0 26.0140000 AP BIOLOGY - 1.0
<b>SOCIAL STUDIES (3.0 / 3.0)</b>			
0.0 / 0.0	1.0 / 1.0 45.0030010 HONORS WORLD HISTORY - 1.0	1.0 / 1.0 45.0010010 HONORS US HISTORY - 1.0	1.0 / 1.0 45.0570011 HRN AMERICAN GOVERNMENT/CIVICS - 0.5 45.0610011 HONORS ECONOMICS/BUSINESS/ENTER - 0.5
<b>HEALTH/PERSONAL FITNESS (1.0 / 1.0)</b>			

- This is what it looks like in IC
- You have a printed copy in your folder.
- Look at your four year plan.
- Contact your Counselor about any changes you want to make for next year, Grade 10, or Grade 11 or Grade 12.

# To Find Your IGP On your Infinite Campus Portal page

➤ Click on Academic Planner



The screenshot displays the Infinite Campus portal interface. On the left is a vertical sidebar menu with the following items: Calendar, Schedule, Responsive Schedule, Attendance, Grades, Academic Planner (highlighted with a red arrow), Fees, Reports, Demographics, Family, Messages, Discussions, Household Information, Family Members, Fees, User Account, Account Settings, Contact Preferences, and Notification Settings. Below these are links for SLDS Portal, Paulding County, and East Paulding High. The main content area shows a dropdown menu for 'Choose an Academic Plan' set to 'IGP - CTAE Advanced'. Below this is a paragraph of text: 'This IGP has an emphasis or main pathway in the Career, Technical and Agricultural Education area. The IGP Template initially populates courses in the areas of English, mathematics, science, social studies, health/personal fitness and World Language (Spanish II), and World Geography (elective). From those populated courses, your selection of courses will be updated and are extremely important as all students are required to meet graduation requirements within this plan. In addition, advisement from adults (counselors, teachers, and parents) will'. Below the text are two dropdown menus for 'Post Grad Location' and 'Post Grad Plans'. A 'Next' button is located in the bottom right corner of the main content area.

Choose an Academic Plan:

This IGP has an emphasis or main pathway in the Career, Technical and Agricultural Education area. The IGP Template initially populates courses in the areas of English, mathematics, science, social studies, health/personal fitness and World Language (Spanish II), and World Geography (elective). From those populated courses, your selection of courses will be updated and are extremely important as all students are required to meet graduation requirements within this plan. In addition, advisement from adults (counselors, teachers, and parents) will

Post Grad Location  Post Grad Plans

[Next](#)



# Test-out Opportunities

## Basic Requirements and Information

1. The law currently states the limit is 3 courses during high school.
2. PCSD Test-out Registration Opportunity is communicated by the Director of Student Assessment. Test-out Registration is an online registration opportunity on the district website.
3. Student cannot have started a course(s) that he/she is planning to test-out.
4. A payment of \$50.00 must be made for each test. Students who score Distinguished will have this money reimbursed after scores come back.
5. Prior to the test-out opportunity a grade of B or higher will be validated. Also, a teacher recommendation regarding the test-out opportunity must be received. This recommendation is completed by the student's teacher in the subject area.
6. EOC assessments are taken during the time frames announced by the Director of Student Assessment.



# Embedded Course

- ▶ Essentials of Healthcare, course number 25.44000.
- ▶ Essentials of Healthcare course now meets the fourth science requirement for high school graduation and meets the fourth science requirement for admission to the University System of Georgia and the Technical College System of Georgia.
- ▶ If one unit of credit is earned in Essentials of Healthcare, then, student will also receive one unit of credit for Human Anatomy and Physiology, course number 26.07300
- ▶ Both courses count for HOPE
- ▶ The EC Human Anatomy and Physiology course will be categorized as an **Elective** on the local high school transcript.





# Work-Based Learning (WBL)

Opportunities Include:

- Youth Apprenticeship
- Cooperative Education
- Internship
- Employability Skills Development

How can I benefit from WBL?

- Put your book knowledge to use and gain hands on experience in your career.
- Earn school credit in your career area during your Junior and Senior year.
- Earn money while learning (excluding some internships).

Ask your WBL Coordinator for an application.

Ms. Hatcher– Room 503 (current 10<sup>th</sup> graders)

# HOPE Scholarship Rigorous List

- Students must continually review that a minimum of 4 rigorous courses from the 10-page document on the GAfutures website below are completed in order to be eligible for the HOPE Scholarship. The chart below is an example of the top of the first page. The information lists course type, course number and course title:

<https://www.gafutures.org/media/113414/rigor-course-list-july-2016.pdf>

**Rigor Course List (July 2016)**

Type of Course	Normalized DOE #	Course Title
English	23.X370XXX	Advanced Placement (AP) Research, ELA
English	23.X380XXX	Advanced Placement (AP) Seminar, ELA
English	23.X430XXX	Advanced Placement Language/Composition
English	23.X530XXX	Advanced Placement Language/Composition (American Literature/Composition)
English	23.X611XXX	International Baccalaureate Communication*
English	23.X612XXX	International Baccalaureate English B SL / International Baccalaureate English B, Year One
English	23.X613XXX	International Baccalaureate English B HL / International Baccalaureate English B, Year Two
English	23.X650XXX	Advanced Placement Literature/Composition
English	23.X680XXX	International Baccalaureate English 11 / International Baccalaureate English SL (American Literature) / International
English	23.X690XXX	International Baccalaureate English 12 / International Baccalaureate English HL (World Literature) / International
English	23.X730XXX	International Baccalaureate English A Language and Literature, Year One
English	23.X731XXX	International Baccalaureate English A Language and Literature, Year Two
Mathematics	27.X510XXX	Statistics*
Mathematics	27.X520XXX	History of Mathematics
Mathematics	27.X522XXX	International Baccalaureate Math Methods / International Baccalaureate Mathematical Studies, Year One

# HOPE GPA

- Please remember that a HOPE GPA is calculated on a 4.0 scale and the focus is on academic courses completed. No middle school courses are counted for the HOPE gpa.
- Some science courses that are used in a CTAE pathway also count as the 4<sup>th</sup> Science requirement. All of these courses automatically calculate into the HOPE gpa.
- Non-academic elective courses do not count.
- Thus, a numeric GPA of 83.4%, does not necessarily mean that the HOPE GPA will be 3.0 or higher.
- Please monitor HOPE GPA via GAfutures account.

# HOPE GPA



- ▶ If a student does not have these three key fields correct in our Student Information System, there will be no HOPE Scholarship:
  - ▶ Legal name that is on birth certificate
  - ▶ Social Security Number
  - ▶ Birth Date
- ▶ All of the above items must match on
  - ▶ Infinite Campus
  - ▶ GAfutures
  - ▶ FAFSA
  - ▶ College Admissions Documents
  - ▶ SAT or ACT Testing Documents

Our advisement assists students  
with....

Who am I?

Where am I going?

How do I get there?





# Again GAfutures and GCIS have many tools and resources for high school students

[www.gafutures.org](http://www.gafutures.org)

[www.gcic.peachnet.edu](http://www.gcic.peachnet.edu)

**GAfutures**  
Explore. Plan. Succeed.

Home HOPE & State Aid Programs Federal Aid & Scholarships College Planning Career Exploration Resources About Us My GAfutures

**Scholarships**

Welcome to GAfutures  
Take a quick tour of Georgia's new resou...

**HOPE Programs**  
HOPE is Georgia's unique scholarship and...

**Scholarship Search**  
There's more money for your postsecondary...

**Scholarship Search**  
There's more money for your postsecondary education than you think. Find it with this helpful tool.

**Learn more**


**Start Saving for College Today**  
It only takes \$25 and 15 minutes to open...



**Georgia Career Information System**

Georgia Career Information Center, through its Georgia Career Information System (GCIS), provides current and accurate occupational and educational information to schools and agencies throughout Georgia in order to help young people and adults make informed career choices.





# For the rest of high school, All Students Should:

- ▶ Focus on academics
- ▶ Take rigorous/relevant courses
- ▶ Keep organized
- ▶ Research options
  - ▶ Use [GAfutures.org](http://GAfutures.org) and the Georgia Career Information System, [www.gcic.peachnet.edu](http://www.gcic.peachnet.edu)
  - ▶ Continue career exploration
  - ▶ Consider being a Dual Enrollment or work-based learning student
  - ▶ Begin to look at scholarship information
  - ▶ Begin to explore application process, if you will be attending a post-secondary institution
- ▶ Please keep HOPE Alive!!!!

# Dual Enrollment

**Chattahoochee Technical College and Dr. Haston**



A process by which high school students take courses from a state public or private postsecondary institution while still enrolled as a high school student and receive credit both at the high school and at the postsecondary institution.



# Financial Considerations

- Tuition is paid.
  - Mandatory fee costs are covered.
  - Books are provided.
  - Expenses for travel or living on campus are provided by the student.
- 
- The next Summit meeting for more information will be Feb 28, 2019 at PCHS at 6:00 p.m

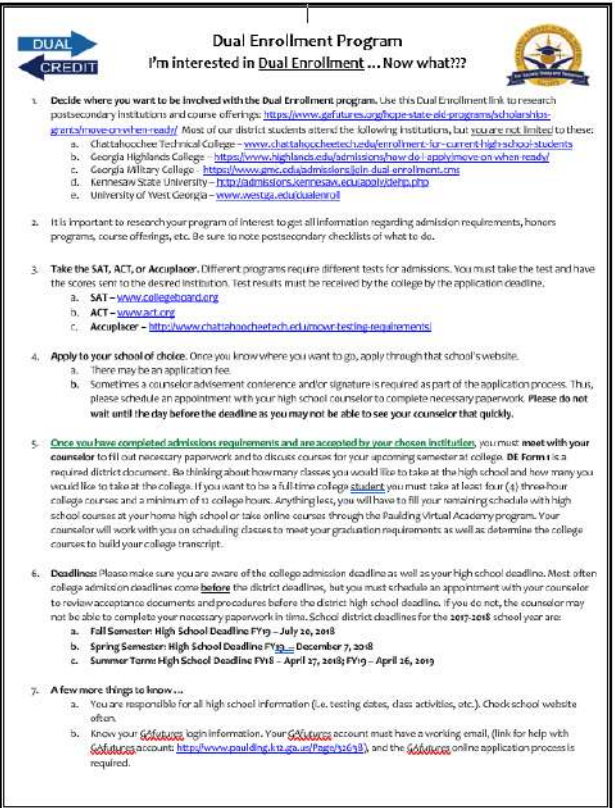


# Dual Enrollment/ HOPE and Zell Miller Scholarship

- Core courses are included in the student's HOPE high school GPA for HOPE Scholarship and Zell Miller Scholarship eligibility determinations.
- Core coursework taken as dual enrollment meets Academic Rigor requirements and are given a weight of 0.5 toward HOPE Calculation. The HOPE GPA calculation has a cap of 4.0.
- College transcript begins as DE student.
- DE hours do not count against any HOPE hour cap.

# I'm Interested in Dual Enrollment... Now What?

- Stop by the Counseling office and pick up a "I'm Interested in Dual Enrollment Form."
- Apply to the school of choice.
- Once you have been accepted, schedule a meeting with Dr. Haston- DE Counselor, to discuss possible courses for the enrolling semester and to complete District paperwork.
- For more information, please email Dr. Haston at [shaston@Paulding.k12.ga.us](mailto:shaston@Paulding.k12.ga.us)



**DUAL CREDIT** **Dual Enrollment Program** **I'm interested in Dual Enrollment... Now what???**

- Decide where you want to be involved with the Dual Enrollment program.** Use this Dual Enrollment link to research postsecondary institutions and course offerings: <https://www.gofuture.ga.gov/cope-state-etc-program/dualenroll>.  
Most of our district students attend the following institutions, but you are not limited to these:  
a. Chattahoochee Technical College - [www.chattahoocheetech.edu/enrollment-for-current-high-school-students](http://www.chattahoocheetech.edu/enrollment-for-current-high-school-students)  
b. Georgia Highlands College - <https://www.gohighlands.edu/admissions/how-to-apply/move-on-when-ready/>  
c. Georgia Military College - <https://www.gmc.edu/admission/apply-dual-enrollment.cfm>  
d. Kennesaw State University - <http://admission.kennesaw.edu/apply/step.php>  
e. University of West Georgia - [www.westga.edu/dualenroll](http://www.westga.edu/dualenroll)
- It is important to research your program of interest to get all information regarding admission requirements, honors programs, course offerings, etc. Be sure to note postsecondary checklists of what to do.
- Take the SAT, ACT, or Accuplacer.** Different programs require different tests for admissions. You must take the test and have the scores sent to the desired institution. Test results must be received by the college by the application deadline.  
a. SAT - [www.collegeboard.org](http://www.collegeboard.org)  
b. ACT - [www.act.org](http://www.act.org)  
c. Accuplacer - <http://www.chattahoocheetech.edu/innov8/testing-requirements/>
- Apply to your school of choice.** Once you know where you want to go, apply through that school's website.  
a. There may be an application fee.  
b. Sometimes a counselor advisement conference and/or signature is required as part of the application process. This is, please schedule an appointment with your high school counselor to complete necessary paperwork. **Please do not wait until the day before the deadline as you may not be able to see your counselor that quickly.**
- Once you have completed admission requirements and are accepted by your chosen institution,** you must meet with your counselor to fill out necessary paperwork and to discuss courses for your upcoming semester at college. **DE Form 1** is a required district document. Be thinking about how many classes you would like to take at the high school and how many you would like to take at the college. If you want to be a full-time college student you must take at least four (4) three-hour college courses and a minimum of 12 college hours. Anything less, you will have to fill your remaining schedule with high school courses at your home high school or take online courses through the Paulding Virtual Academy program. Your counselor will work with you on scheduling classes to meet your graduation requirements as well as determine the college courses to build your college transcript.
- Deadlines!** Please make sure you are aware of the college admission deadline as well as your high school deadline. Most often college admission deadlines come before the district deadlines, but you must schedule an appointment with your counselor to review acceptance documents and procedures before the district high school deadline. If you do not, the counselor may not be able to complete your necessary paperwork in time. School district deadlines for the 2017-2018 school year are:  
a. Fall Semester High School Deadline FY17 - July 26, 2018  
b. Spring Semester High School Deadline FY17 - December 7, 2018  
c. Summer Term High School Deadline FY18 - April 27, 2018; FY19 - April 26, 2019
- A few more things to know...**  
a. You are responsible for all high school information (i.e. testing dates, class activities, etc.). Check school website often.  
b. Know your **GOOGLE** login information. Your **GOOGLE** account must have a working email, (link for help with **GOOGLE** account: <https://www.paulding.k12.ga.us/?page=32618>), and the **GOOGLE** online application process is required.

Counselors are here to guide students with future plans so that all students are College and Career Ready!

If you have any questions, please contact your Grade Level Counselor:

9th Grade: [vmoore@Paulding.k12.ga.us](mailto:vmoore@Paulding.k12.ga.us)

10th Grade: [sholland@Paulding.k12.ga.us](mailto:sholland@Paulding.k12.ga.us)

