

Georgia
CRCT
online



6th Social Studies Quiz B

Sixth Grade Social Studies
Quiz

Practice Test

Name: _____

Date: _____

Instructions:

Name: _____

Quiz: 6th Social Studies Quiz B

Date: _____

Teacher: Practice Test

1. According to the economic theory of supply and demand,

- A. prices rise when more goods are being produced.
 - B. the government decides how much is produced.
 - C. prices rise when few goods are produced.
 - D. the government of one country can take advantage of poorer countries.
-

2. Consider the overall climate of Russia. Which **best** explains how climate has affected Russia?

- A. A lack of water has prevented the regrowth of forests.
 - B. Harsh winters have forced invading armies to retreat.
 - C. The long growing season makes it possible to produce a lot of grain.
 - D. The warm winds allow year-round travel on Russia's waterways.
-

Name: _____

Quiz: 6th Social Studies Quiz B

Date: _____

Teacher: Practice Test

Use the map below to answer question 3.



3. Which of these mountain ranges is shown on the map?

- A. the Ozark Mountains
 - B. the Rocky Mountains
 - C. the Cascade Mountains
 - D. the Appalachian Mountains
-

Name: _____

Quiz: 6th Social Studies Quiz B

Date: _____

Teacher: Practice Test

4. A worker on an assembly line who performs only one task, such as turning a knob in a machine shop, is an example of labor

- A. surplus.
 - B. exchange.
 - C. investment.
 - D. specialization.
-

5. All of the following helped to improve farming during the Middle Ages **except** the

- A. three-fields system.
 - B. invention of the iron-tipped plow.
 - C. greater use of animals.
 - D. invention of the cotton gin.
-

6. What document did England's King John sign in 1215 that required the monarchy to guarantee many rights and liberties to all English citizens?

- A. Magna Carta
 - B. Parliament Act
 - C. Townshend Act
 - D. Mayflower Compact
-

7. In Europe, World War II began in September 1939. Which event was a direct cause of the war?

- A. Germany attacked Italy.
 - B. Germany attacked Poland.
 - C. Russia attacked Germany.
 - D. Russia attacked Britain and France.
-

Name: _____

Quiz: 6th Social Studies Quiz B

Date: _____

Teacher: Practice Test

8. The Amazon basin in Brazil contains the world's largest

- A. petroleum supply.
 - B. mountain range.
 - C. rain forest.
 - D. inland lake.
-

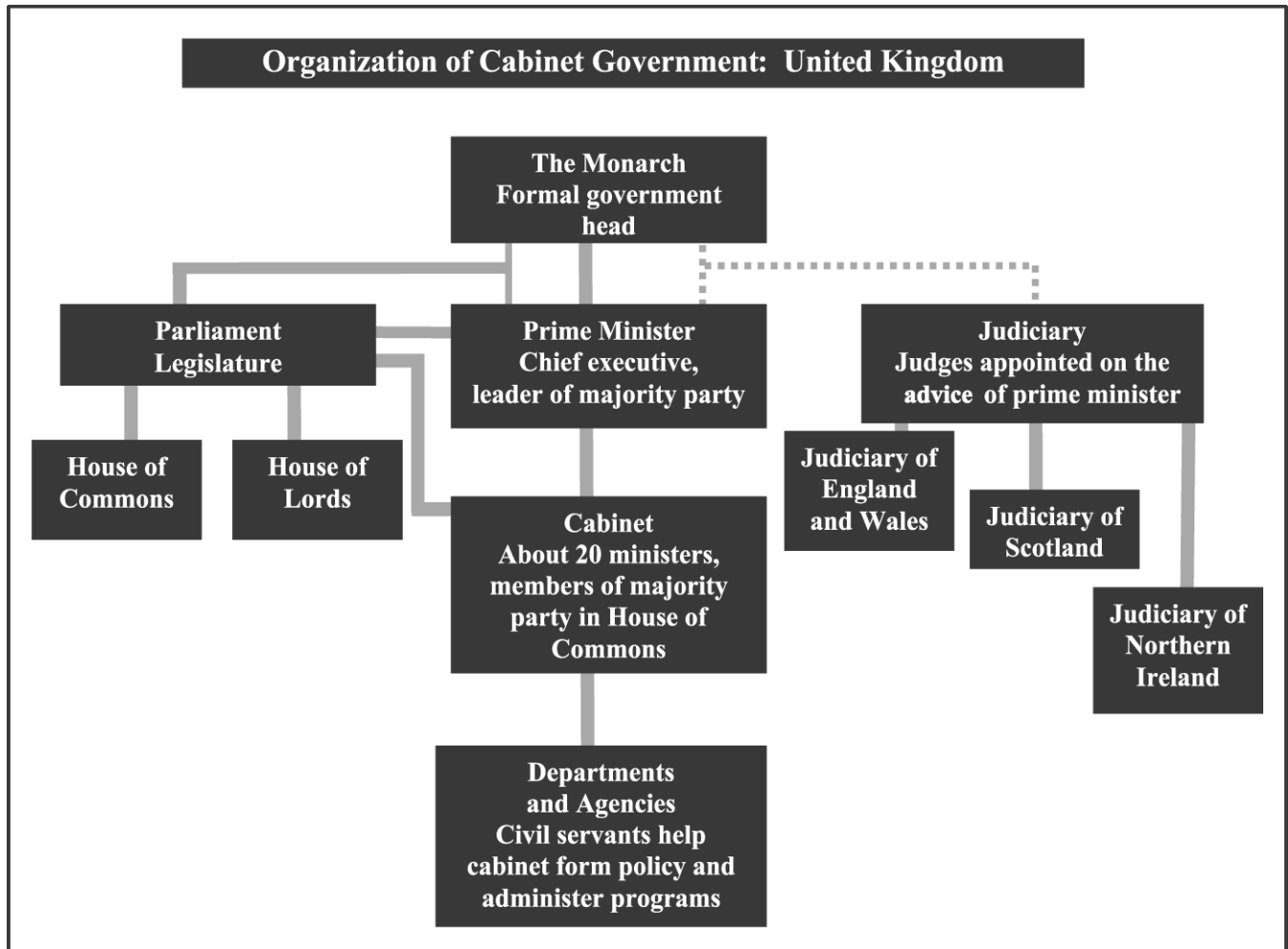
Name: _____

Quiz: 6th Social Studies Quiz B

Date: _____

Teacher: Practice Test

Use the chart below to answer question 9.



9. Who is the chief executive of the government in the United Kingdom?

- A. the cabinet.
- B. the monarch.
- C. the civil servants.
- D. the prime minister.

Name: _____

Quiz: 6th Social Studies Quiz B

Date: _____

Teacher: Practice Test

10. Which of these rivers caused the erosion that formed the Grand Canyon in Arizona?

- A. Rio Grande
 - B. Colorado
 - C. Missouri
 - D. Mississippi
-

11. In 1215 nobles forced King John of England to sign the Magna Carta. This document guaranteed some rights and limited the power of the king. Which **best** explains the importance of the Magna Carta?

- A. It guaranteed that the feudeal system would continue keeping law and order.
 - B. It was a beginning step in developing a more democratic government.
 - C. It guaranteed that the industrial growth of England would continue.
 - D. It was an important step leading to exploration of the New World.
-

12. Based on the economic theory of supply and demand, which of the following statements is correct?

- A. When the supply of a product goes up, its price will go up.
 - B. When the supply of a product goes up, demand for it goes up.
 - C. When the supply of a product goes up, its price will go down.
 - D. When the supply of a product goes down, demand for it goes down.
-

Name: _____

Quiz: 6th Social Studies Quiz B

Date: _____

Teacher: Practice Test

Use the map below to answer question 13.

AUSTRALIA



13. Which number on the map locates the region of Australia where the Murray River flows?

- A. 1
- B. 2
- C. 3
- D. 4

14. The leader of the Parliament in countries such as Canada and Great Britain is called the

- A. speaker.
 - B. president.
 - C. chairman.
 - D. prime minister.
-

Name: _____

Quiz: 6th Social Studies Quiz B

Date: _____

Teacher: Practice Test

15. Which term best describes Cuba's economic system under Fidel Castro?

- A. feudal
 - B. market
 - C. capitalist
 - D. communist
-