

**Neoga Jr/Sr High School**  
**Neoga CUSD 3**  
**Neoga, ILLINOIS**



**ILLINOIS**  
**SCHOOL**  
**REPORT**  
**CARD**

**GRADES : 6 7 8 9 10 11 12**

State and federal laws require public school districts to release report cards to the public each year.

This year, we have updated the report card to provide a full picture of school performance beyond just test scores. A display of this data designed with parents and communities in mind is available on [illinoisreportcard.com](http://illinoisreportcard.com). All of the metrics posted on [illinoisreportcard.com](http://illinoisreportcard.com) are also included in this report.

## STUDENTS

RACIAL/ETHNIC BACKGROUND AND OTHER INFORMATION												
	White	Black	Hispanic	Asian	Native Hawaiian /Pacific Islander	American Indian	Two or More Races	Percent Low-Income	Percent Limited-English-Proficient	Percent IEP	Percent Homeless	Total Enrollment
<b>School</b>	96.1	1.1	0.3	0.8	0.0	0.8	0.8	44.0	0.0	18.5	1.7	357
<b>District</b>	96.5	1.1	0.3	0.5	0.0	0.5	1.2	48.0	0.0	22.3	1.7	660
<b>State</b>	48.8	17.3	25.5	4.7	0.1	0.3	3.2	49.9	10.5	14.3	2.2	2,041,779

**Low-income** students come from families receiving public aid; live in institutions for neglected or delinquent children; are supported in foster homes with public funds; or are eligible to receive free or reduced-price lunches.

**IEP** Students are those students eligible to receive special education services.

**Limited-English-proficient** students are those students eligible for transitional bilingual programs.

**Total Enrollment** is based on **Home School**.

**Homeless** students are who do not have permanent and adequate homes.

	High Sch. Dropout Rate	Chronic Truancy Rate	Mobility Rate	Attendance Rate
<b>School</b>	0.0	3.2	8.7	95.3
<b>District</b>	0.0	3.7	12.2	95.2
<b>State</b>	2.0	9.8	12.2	94.4

**Mobility rate** is based on the number of times students enroll in or leave a school during the school year.

**Chronic truants** are students who are absent from school without valid cause for 9 or more of the last 180 school days.

## INSTRUCTIONAL SETTING

PARENTAL CONTACT*	
	Percent
<b>School</b>	93.1
<b>District</b>	96.0
<b>State</b>	95.3

TOTAL SCHOOL DAYS	
	Days
<b>School</b>	174
<b>District</b>	174
<b>State</b>	175

8TH GRADERS PASSING ALGEBRA I **	
	Percent
<b>School</b>	0.0
<b>District</b>	0.0
<b>State</b>	28.4

\*\* For the 8th graders passing algebra I, if the percentage is 0, it means that an Algebra I course is not offered.

\* Parental contact includes parent-teacher conferences, parental visits to school, school visits to home, telephone conversations, and written correspondence.

STUDENT-TO-STAFF RATIOS			
Pupil-Teacher Elementary	Pupil-Teacher Secondary	Pupil-Certified Staff	Pupil-Administrator
--	--	--	--
31.8	9.5	12.7	188.0
18.7	18.9	11.3	176.5

HEALTH AND WELLNESS (days per week)	
	Days
<b>School</b>	5.0
<b>District</b>	5.0
<b>State</b>	4.0

AVERAGE CLASS SIZE (as of the first school day in May)											
Grades	K	1	2	3	4	5	6	7	8	9 - 12	Overall
School							19.0	15.8	18.0	19.1	18.4
District							19.0	15.8	18.0	19.1	19.9
State							22.7	21.9	21.8	19.0	21.1

TIME DEVOTED TO TEACHING CORE SUBJECTS (Minutes Per Day)												
Grades	Mathematics			Science			English/Language Arts			Social Science		
	3	6	8	3	6	8	3	6	8	3	6	8
School		43	43		43	43		86	86		43	43
District		43	43		43	43		86	86		43	43
State		60	57		48	50		90	79		47	50

TEACHER INFORMATION (Full-Time Equivalents)											
	White	Black	Hispanic	Asian	Native Hawaiian/ Pacific islander	American Indian	Two or More Races	Unknown	Male	Female	Total Number
	District	97.4	0.0	0.0	0.0	0.0	0.0	0.0	2.6	24.5	75.5
State	83.4	6.0	5.7	1.4	0.1	0.2	0.8	2.5	23.3	76.7	127,152

TEACHER INFORMATION (Continued)			
	Average Teaching Experience (Years)	% of Teachers with Bachelor's Degrees	% of Teachers with Master's & Above
School	--	--	--
District	16.9	49.8	50.2
State	13.1	38.1	61.4

Poverty (low-income) is defined on page 1 of all report cards. High- and low-poverty schools include those in the top and bottom quarters of the poverty distribution of schools in the state.

Some teacher/administrator data are not collected at the school level.

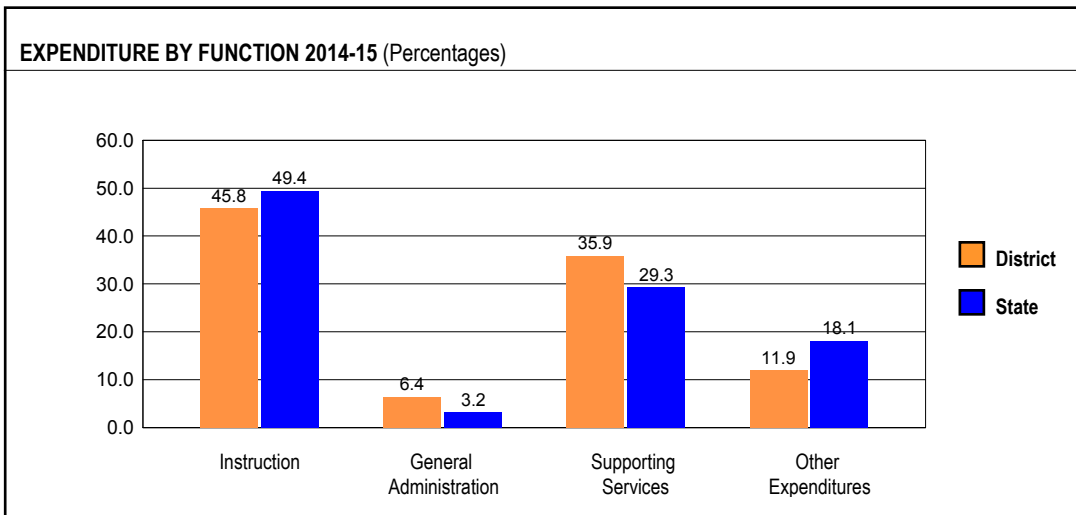
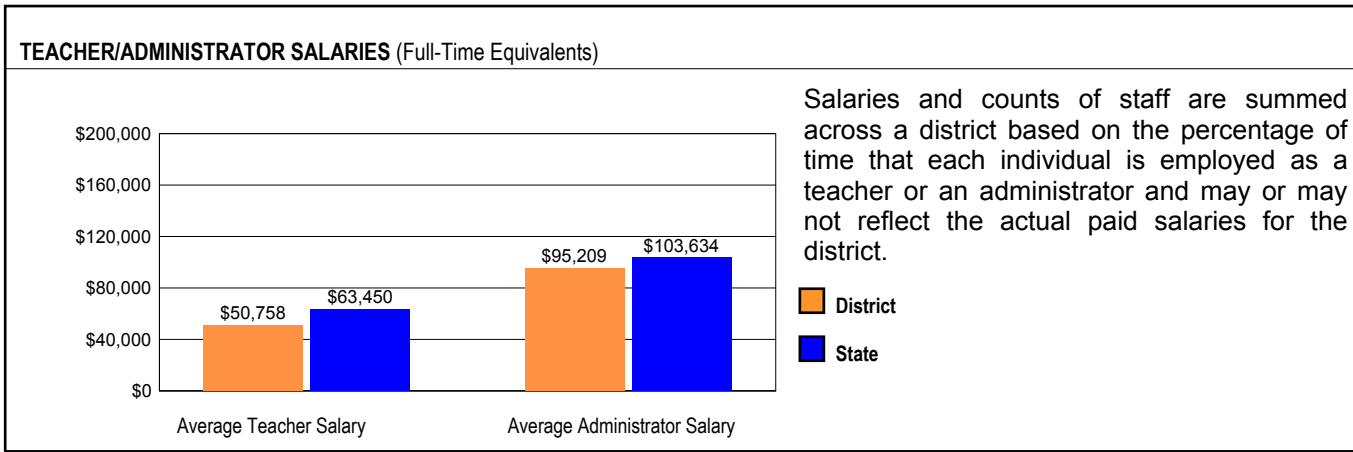
TEACHER RETENTION RATE	
School	76.3
District	78.6
State	85.8

PRINCIPAL TURNOVER (Count)	
School	1.0
District	2.0
State	2.0

TEACHER ATTENDANCE	
School	59.1
District	48.7
State	76.5

Percentage of teachers absent 10 or fewer days  
Data from 2013-14 Office of Civil Rights Data Collection, published June 2016

## SCHOOL DISTRICT FINANCES



**REVENUE BY SOURCE 2014-15**

	District	District %	State %
Local Property Taxes	\$2,750,282	44.4	62.8
Other Local Funding	\$367,381	5.9	4.6
General State Aid	\$2,094,069	33.8	16.3
Other State Funding	\$491,633	7.9	8.6
Federal Funding	\$493,918	8.0	7.7
<b>TOTAL</b>	<b>\$6,197,283</b>		

**EXPENDITURE BY FUND 2014-15**

	District	District %	State %
Education	\$4,481,510	71.0	73.4
Operations & Maintenance	\$534,289	8.5	6.4
Transportation	\$370,195	5.9	3.7
Debt Service	\$528,235	8.4	8.1
Tort	\$168,034	2.7	1.3
Municipal Retirement/ Social Security	\$233,686	3.7	2.1
Fire Prevention & Safety	\$0	0.0	0.5
Capital Projects	\$0	0.0	4.7
<b>TOTAL</b>	<b>\$6,315,949</b>		

**OTHER FINANCIAL INDICATORS**

	2013 Equalized Assessed Valuation per Pupil	2013 Total School Tax Rate per \$100	2014-15 Instructional Expenditure per Pupil	2014-15 Operating Expenditure per Pupil
District	\$101,413	4.13	\$4,709	\$9,017
State	**	**	\$7,712	\$12,821

\*\* Due to the way Illinois school districts are configured, state averages for equalized assessed valuation per pupil and total school tax rate per \$100 are not provided.

Equalized assessed valuation includes all computed property values upon which a district's local tax rate is calculated.

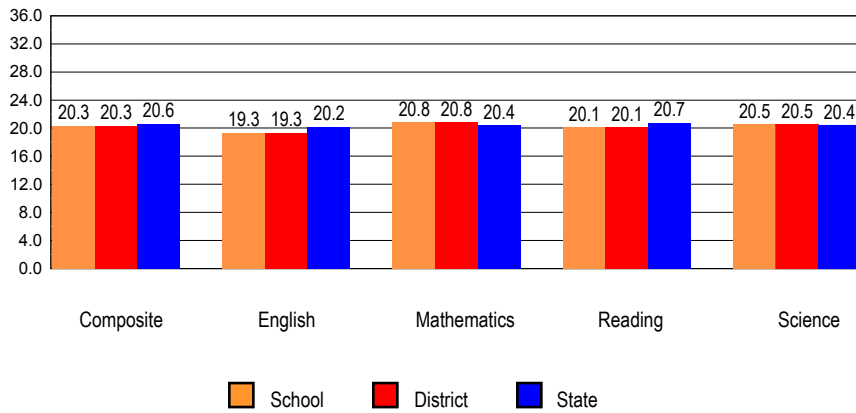
Total school tax rate is a district's total tax rate as it appears on local property tax bills.

Instructional expenditure per pupil includes the direct costs of teaching pupils or the interaction between teachers and pupils.

Operating expenditure per pupil includes the gross operating cost of a school district excluding summer school, adult education, bond principal retired, and capital expenditures.

## ACADEMIC PERFORMANCE

### ACT ASSESSMENT: GRADUATING CLASS OF 2016 \*



The number and percent of students taking the ACT are no longer reported since virtually every eleventh grade student takes the ACT as part of the PSAE.

\* Includes graduating students' most recent ACT Assessment scores from an ACT national test date or PSAE testing. All students whose scores are college reportable, both standard and extended time tests, are now included. State averages for ACT data are based on regular public schools and do not include private and special purpose schools.

### READY FOR COLLEGE COURSE WORK

School	46.3
District	46.3
State	46.4

### PERCENT OF STUDENTS MET ACT BENCHMARKS

	English	Math	Read	Science	ALL 4 Subjects
School	50.0	48.1	33.3	35.2	24.1
District	50.0	48.1	33.3	35.2	24.1
State	61.9	39.7	40.3	34.3	25.1

### COLLEGE ENROLLMENT

	12 Months	16 Months
School	69.8	74.6
District	69.8	74.6
State	67.8	71.4

### FRESHMEN ON TRACK

School	75.0
District	75.0
State	82.4

### CTE ENROLLMENT

School	80
District	80
State	280,517

### ADVANCED COURSE WORK (AP/IB/DUAL CREDIT)

	GRADE 10	GRADE 11	GRADE 12
School	0	0	40
District	0	0	40
State	28,457	54,910	70,923

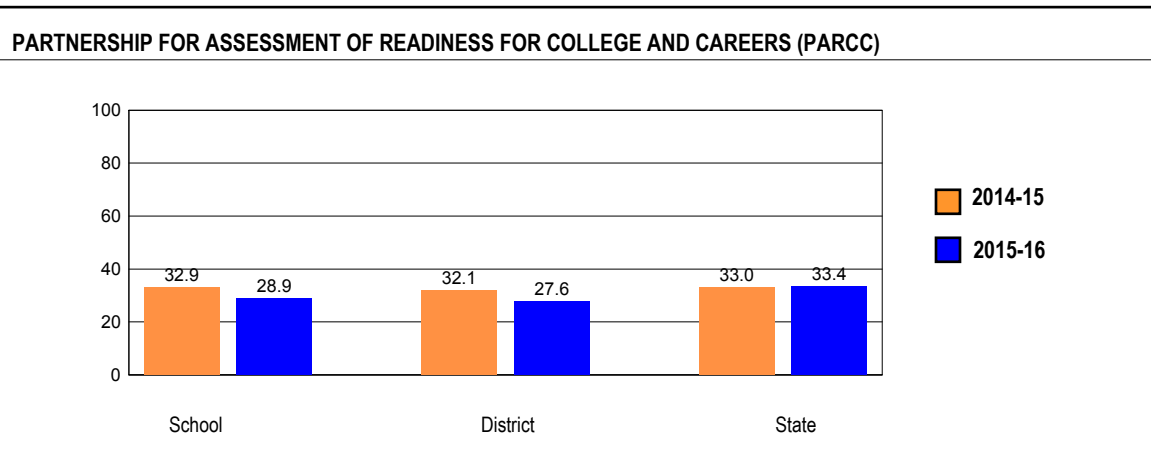
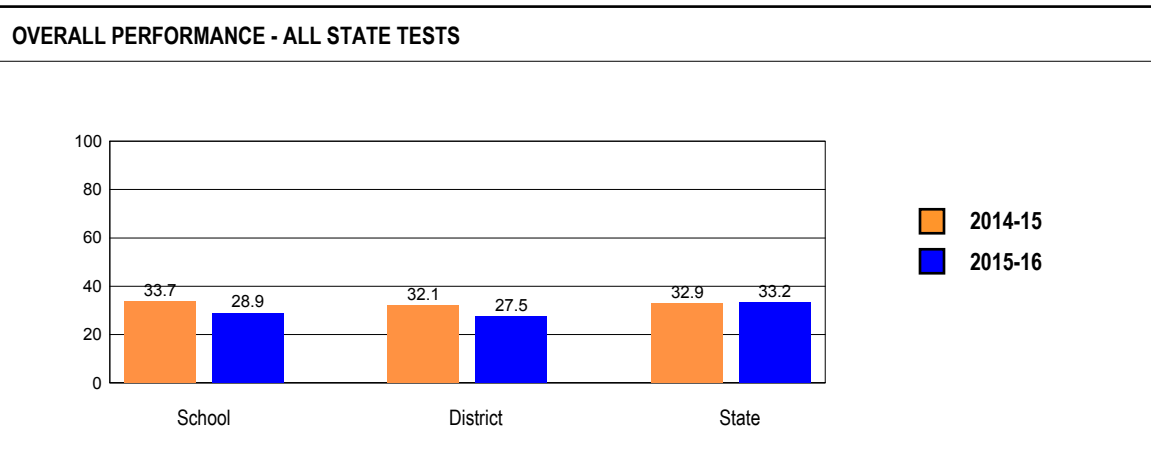
DUAL CREDIT COURSE WORK			
Levels	Grade10	Grade11	Grade12
All			
School	0	0	40
District	0	0	40
State	7,337	17,215	29,739
White			
School	0	0	38
District	0	0	38
State	4,262	11,960	20,330
Black			
School	0	0	1
District	0	0	1
State	1,107	1,668	2,746
Hispanic			
School	0	0	0
District	0	0	0
State	1,522	2,442	4,548
Asian			
School	0	0	0
District	0	0	0
State	240	622	1,250
Native Hawaiian/Pacific Islander			
School	0	0	0
District	0	0	0
State	6	18	37
American Indian			
School	0	0	0
District	0	0	0
State	17	33	79
Two or More Races			
School	0	0	1
District	0	0	1
State	183	472	749
LEP			
School	0	0	0
District	0	0	0
State	182	201	237
Non LEP			
School	0	0	40
District	0	0	40
State	7,155	17,014	29,502
IEP			
School	0	0	5
District	0	0	5
State	774	1,382	2,245
Non IEP			



HIGH SCHOOL 7-YEAR GRADUATION RATE													
	Gender			Race / Ethnicity						LEP	Migrant	Students with Disabilities	Economically Disadvantaged
	All	Male	Female	White	Black	Hispanic	Asian	Native Hawaiian/Pacific Islander	American Indian				
School	90.9	86.1	96.3	90.6									81.3
District	90.9	86.1	96.3	90.6									81.3
State	85.8	83.7	88.2	90.9									77.7

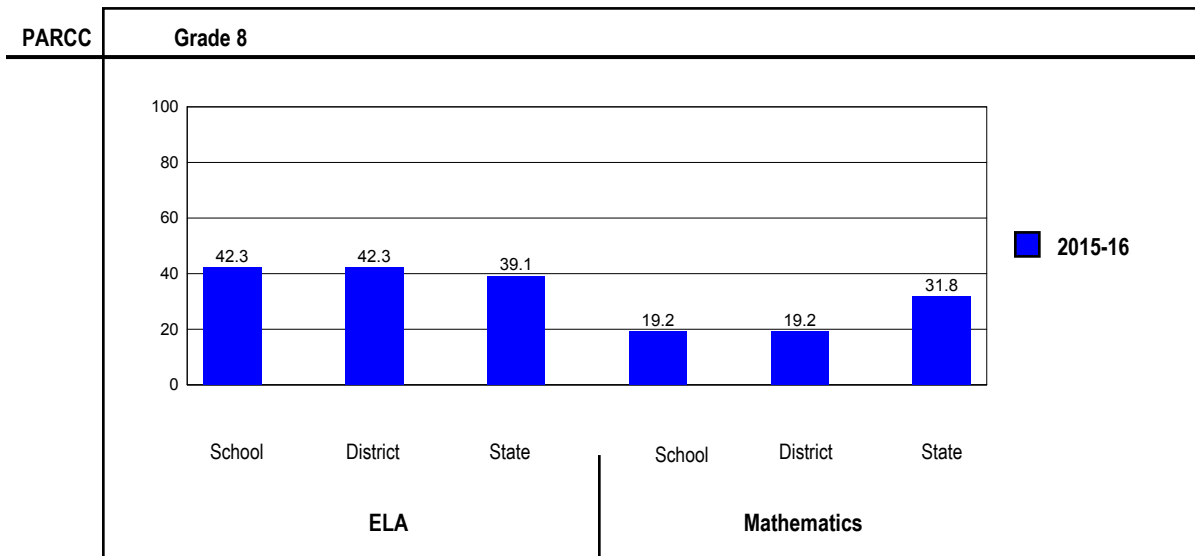
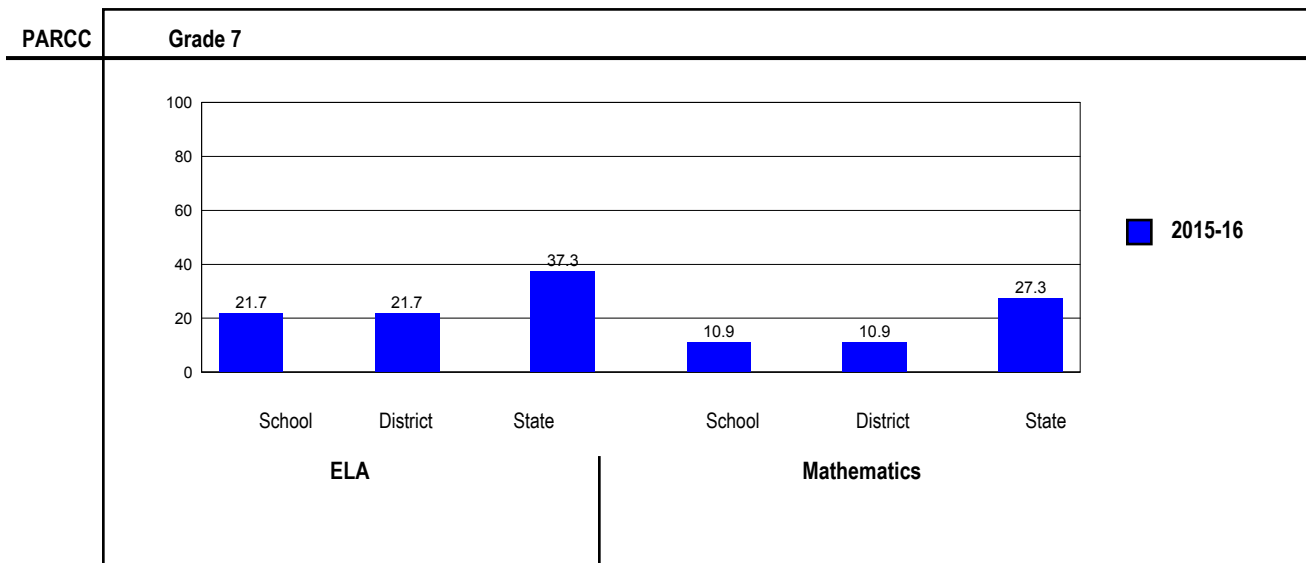
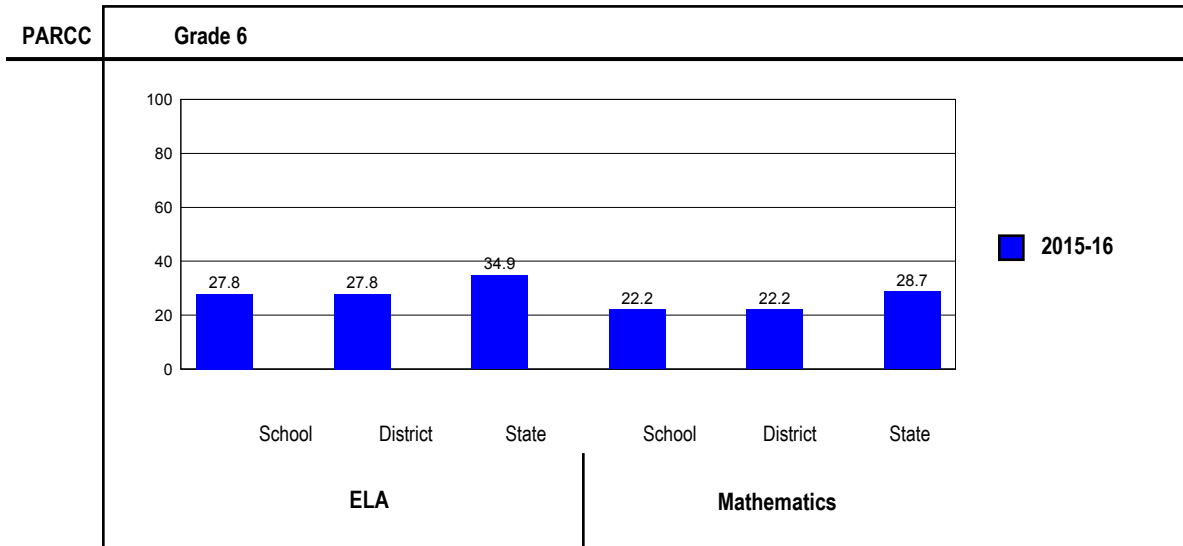
**OVERALL STUDENT PERFORMANCE**

These charts present the overall percentage of state test scores categorized as meeting or exceeding the PARCC expectations or DLM-AA Standards for your district, and the state.



**PARCC PERFORMANCE**

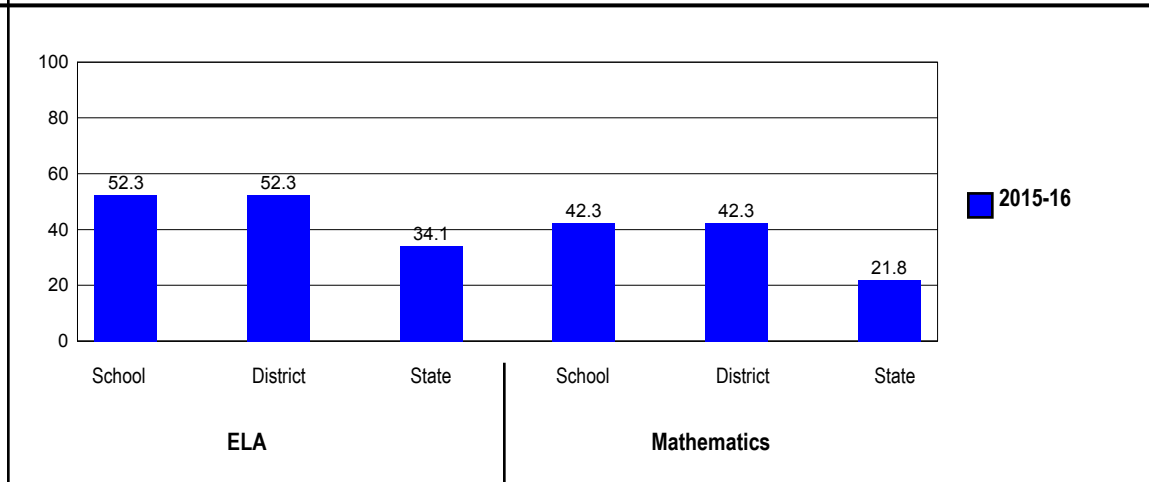
These charts present the overall percentage of state test scores categorized as meeting or exceeding the PARCC expectations or DLM-AA Standards for your district, and the state.





PARCC

High School



## PERFORMANCE ON STATE ASSESSMENTS

The PARCC is administered to students in grade 3 through 8 and high school. The DLM-AA is administered to students in grade 3 through 8 and 11 with disabilities whose Individualized Education Programs (IEPs) indicate that participation in the PARCC would not be appropriate.

Students with disabilities have an IEP (No Child Left Behind Act). An IEP is a written plan for a child with a disability who is eligible to receive special education services under the Individuals with Disabilities Education Act.

In order to protect students' identities, test data for groups of fewer than ten students are not reported.

PERCENTAGE OF STUDENTS NOT TESTED IN STATE TESTING PROGRAMS FOR ELA															
		Gender			Racial/Ethnic Background							LEP	Migrant	Students with Disabilities	Economically Disadvantaged
		All	Male	Female	White	Black	Hispanic	Asian	Native Hawaiian/Pacific islander	American Indian	Two or More Races				
School	*Enrollment	200	97	103	192	3	1	3	0	1	0	0	0	40	94
	Reading	0.5	1.0	0.0	0.5									0.0	1.1
District	*Enrollment	341	171	170	328	5	3	3	0	1	1	1	0	84	176
	Reading	0.6	1.2	0.0	0.6									0.0	1.1
State	*Enrollment	1,050,307	537,851	512,454	512,582	177,823	272,642	49,633	1,043	2,886	33,656	87,711	198	147,577	527,950
	Reading	2.5	2.5	2.6	2.2	3.0	2.9	2.0	3.5	3.0	2.7	2.5	1.0	3.6	2.7

\* Enrollment as reported during the testing windows for grades 3 - 8 and high school.

Number of LEP Students who have attended schools in the U.S. for less than 12 months and are not assessed on the State's reading/language arts test: 0

PERCENTAGE OF STUDENTS NOT TESTED IN STATE TESTING PROGRAMS FOR MATHEMATICS															
		Gender			Racial/Ethnic Background							LEP	Migrant	Students with Disabilities	Economically Disadvantaged
		All	Male	Female	White	Black	Hispanic	Asian	Native Hawaiian/Pacific islander	American Indian	Two or More Races				
School	*Enrollment	181	93	88	174	2	1	3	0	1	0	0	0	36	82
	Mathematics	0.0	0.0	0.0	0.0									0.0	0.0
District	*Enrollment	322	167	155	310	4	3	3	0	1	1	1	0	80	164
	Mathematics	0.0	0.0	0.0	0.0									0.0	0.0
State	*Enrollment	1,025,813	525,396	500,415	494,198	176,422	271,200	47,430	1,046	2,841	32,624	91,569	202	145,620	524,025
	Mathematics	2.5	2.5	2.6	2.1	3.2	3.0	1.5	3.5	3.0	2.6	2.0	1.0	3.8	2.8

\* Enrollment as reported during the testing windows for grades 3 - 8 and high school.

## Partnership for Assessment of Readiness for College and Careers (PARCC)

Each Performance Level is a broad, categorical level defined by a student's overall scale score and used to report overall student performance by describing how well students met the expectations for their grade level/course. Each Performance Level is defined by a range of overall scale scores for the assessment. There are five Performance Levels for PARCC assessments:

- Level 1: Did not yet meet expectations
- Level 2: Partially met expectations
- Level 3: Approached expectations
- Level 4: Met expectations
- Level 5: Exceeded expectations

Students performing at levels 4 and 5 met or exceeded expectations, have demonstrated readiness for the next grade level/course and, ultimately, are on track for college and careers. Performance Level Descriptors (PLDs) describe the knowledge, skills, and practices that students should know and be able to demonstrate at each Performance Level in each content area (ELA/L and mathematics), and at each grade level/course. PLDs are available at <http://avocet.pearson.com/PARCC/Home>.

### Grade 6

#### Grade 6 - All

Levels	ELA					Mathematics				
	1	2	3	4	5	1	2	3	4	5
School	13.0	31.5	27.8	25.9	1.9	27.8	24.1	25.9	18.5	3.7
District	13.0	31.5	27.8	25.9	1.9	27.8	24.1	25.9	18.5	3.7
State	12.7	21.1	31.3	30.8	4.1	14.4	27.2	29.8	25.1	3.6

#### Grade 6 - Gender

Levels	ELA					Mathematics					
	1	2	3	4	5	1	2	3	4	5	
Male	School	14.3	35.7	28.6	21.4	0.0	25.0	32.1	28.6	14.3	0.0
	District	14.3	35.7	28.6	21.4	0.0	25.0	32.1	28.6	14.3	0.0
	State	16.7	24.6	31.0	25.4	2.2	16.2	27.1	28.5	24.5	3.7
Female	School	11.5	26.9	26.9	30.8	3.8	30.8	15.4	23.1	23.1	7.7
	District	11.5	26.9	26.9	30.8	3.8	30.8	15.4	23.1	23.1	7.7
	State	8.5	17.5	31.5	36.5	6.0	12.5	27.3	31.0	25.7	3.5

**Grade 6 - Racial/Ethnic Background**

Levels	ELA					Mathematics					
	1	2	3	4	5	1	2	3	4	5	
White	School	13.7	33.3	25.5	25.5	2.0	29.4	23.5	25.5	17.6	3.9
	District	13.7	33.3	25.5	25.5	2.0	29.4	23.5	25.5	17.6	3.9
	State	7.6	16.4	31.7	39.0	5.3	8.1	21.5	32.7	33.1	4.5
Black	School										
	District										
	State	23.9	30.5	29.6	15.1	0.9	29.4	38.0	23.1	9.1	0.4
Hispanic	School										
	District										
	State	16.8	26.3	33.3	22.0	1.6	18.7	34.0	29.9	16.4	0.9
Asian	School										
	District										
	State	4.4	9.1	22.7	48.9	14.9	3.9	10.8	21.9	44.1	19.3
Native Hawaiian/Pacific Islander	School										
	District										
	State	6.8	13.6	31.4	41.5	6.8	4.2	21.8	36.1	35.3	2.5
American Indian	School										
	District										
	State	16.6	21.3	33.0	26.9	2.2	15.2	28.7	34.0	20.4	1.7
Two or More Races	School										
	District										
	State	11.2	20.4	31.2	31.8	5.4	13.8	26.6	29.1	26.1	4.5

**Grade 6 - Students with Disabilities**

Levels	ELA					Mathematics					
	1	2	3	4	5	1	2	3	4	5	
IEP	School	50.0	50.0	0.0	0.0	0.0	58.3	41.7	0.0	0.0	0.0
	District	50.0	50.0	0.0	0.0	0.0	58.3	41.7	0.0	0.0	0.0
	State	45.4	32.3	16.4	5.5	0.4	43.3	37.5	13.6	5.3	0.4
Non-IEP	School	2.4	26.2	35.7	33.3	2.4	19.0	19.0	33.3	23.8	4.8
	District	2.4	26.2	35.7	33.3	2.4	19.0	19.0	33.3	23.8	4.8
	State	7.7	19.4	33.6	34.7	4.6	10.0	25.6	32.2	28.1	4.1

**Grade 6 - Economically Disadvantaged**

Levels	ELA					Mathematics					
	1	2	3	4	5	1	2	3	4	5	
Free/Reduced Price Lunch	School	20.7	41.4	24.1	13.8	0.0	44.8	27.6	17.2	10.3	0.0
	District	20.7	41.4	24.1	13.8	0.0	44.8	27.6	17.2	10.3	0.0
	State	19.5	28.1	32.1	19.1	1.3	22.5	35.4	27.8	13.5	0.8
Not Eligible	School	4.0	20.0	32.0	40.0	4.0	8.0	20.0	36.0	28.0	8.0
	District	4.0	20.0	32.0	40.0	4.0	8.0	20.0	36.0	28.0	8.0
	State	5.9	14.1	30.5	42.7	6.9	6.1	18.8	31.7	36.9	6.5

**Grade 7****Grade 7 - All**

Levels	ELA					Mathematics				
	1	2	3	4	5	1	2	3	4	5
School	17.4	28.3	32.6	15.2	6.5	13.0	43.5	32.6	10.9	0.0
District	17.4	28.3	32.6	15.2	6.5	13.0	43.5	32.6	10.9	0.0
State	15.0	20.3	27.3	28.6	8.7	11.8	26.5	34.3	24.2	3.1

**Grade 7 - Gender**

Levels	ELA					Mathematics					
	1	2	3	4	5	1	2	3	4	5	
Male	School	26.1	30.4	34.8	4.3	4.3	8.7	52.2	34.8	4.3	0.0
	District	26.1	30.4	34.8	4.3	4.3	8.7	52.2	34.8	4.3	0.0
	State	19.9	23.6	27.7	23.6	5.2	13.7	27.2	33.1	22.7	3.3
Female	School	8.7	26.1	30.4	26.1	8.7	17.4	34.8	30.4	17.4	0.0
	District	8.7	26.1	30.4	26.1	8.7	17.4	34.8	30.4	17.4	0.0
	State	9.9	16.9	26.9	33.9	12.4	9.9	25.8	35.5	25.8	2.9

**Grade 7 - Racial/Ethnic Background**

Levels	ELA					Mathematics					
	1	2	3	4	5	1	2	3	4	5	
White	School	18.2	29.5	29.5	15.9	6.8	13.6	43.2	31.8	11.4	0.0
	District	18.2	29.5	29.5	15.9	6.8	13.6	43.2	31.8	11.4	0.0
	State	9.5	16.4	27.7	35.2	11.2	7.5	21.0	36.6	31.3	3.7
Black	School										
	District										
	State	27.8	28.4	26.0	15.3	2.4	22.7	38.2	29.6	9.1	0.3
Hispanic	School										
	District										
	State	19.6	25.1	29.2	22.2	4.0	14.9	32.8	35.2	16.4	0.8
Asian	School										
	District										
	State	4.5	8.1	18.8	39.9	28.7	3.2	9.4	24.1	45.3	18.0
Native Hawaiian/Pacific Islander	School										
	District										
	State	5.8	16.7	27.5	34.8	15.2	4.3	21.4	36.4	32.1	5.7
American Indian	School										
	District										
	State	18.5	24.0	25.8	25.6	6.0	15.7	30.5	31.3	19.8	2.6
Two or More Races	School										
	District										
	State	14.3	20.3	26.2	28.7	10.5	11.9	26.6	32.5	24.8	4.2

**Grade 7 - Economically Disadvantaged**

Levels	ELA					Mathematics					
	1	2	3	4	5	1	2	3	4	5	
Free/Reduced Price Lunch	School	20.8	29.2	33.3	16.7	0.0	16.7	45.8	33.3	4.2	0.0
	District	20.8	29.2	33.3	16.7	0.0	16.7	45.8	33.3	4.2	0.0
	State	22.9	26.7	28.1	19.1	3.2	18.1	35.2	32.9	13.1	0.7
Not Eligible	School	13.6	27.3	31.8	13.6	13.6	9.1	40.9	31.8	18.2	0.0
	District	13.6	27.3	31.8	13.6	13.6	9.1	40.9	31.8	18.2	0.0
	State	7.3	14.1	26.6	37.9	14.2	5.7	18.0	35.7	35.2	5.5

**Grade 8****Grade 8 - All**

Levels	ELA					Mathematics				
	1	2	3	4	5	1	2	3	4	5
School	17.3	11.5	28.8	40.4	1.9	25.0	28.8	26.9	19.2	0.0
District	17.3	11.5	28.8	40.4	1.9	25.0	28.8	26.9	19.2	0.0
State	15.2	18.9	26.9	33.6	5.5	21.4	23.7	23.1	27.7	4.1

**Grade 8 - Gender**

Levels	ELA					Mathematics					
	1	2	3	4	5	1	2	3	4	5	
Male	School	24.0	20.0	32.0	24.0	0.0	24.0	44.0	20.0	12.0	0.0
	District	24.0	20.0	32.0	24.0	0.0	24.0	44.0	20.0	12.0	0.0
	State	20.2	21.9	27.1	27.5	3.3	24.4	23.7	21.6	26.0	4.2
Female	School	11.1	3.7	25.9	55.6	3.7	25.9	14.8	33.3	25.9	0.0
	District	11.1	3.7	25.9	55.6	3.7	25.9	14.8	33.3	25.9	0.0
	State	9.9	15.7	26.8	39.9	7.7	18.2	23.7	24.6	29.5	4.0

**Grade 8 - Racial/Ethnic Background**

Levels	ELA					Mathematics					
	1	2	3	4	5	1	2	3	4	5	
White	School	16.0	12.0	28.0	42.0	2.0	24.0	28.0	28.0	20.0	0.0
	District	16.0	12.0	28.0	42.0	2.0	24.0	28.0	28.0	20.0	0.0
	State	10.2	15.7	26.8	40.4	7.0	14.6	20.5	24.5	35.3	5.1
Black	School										
	District										
	State	27.4	25.9	27.0	18.4	1.2	38.8	30.1	19.2	11.5	0.4
Hispanic	School										
	District										
	State	19.0	22.6	28.8	27.1	2.4	26.0	28.3	24.1	20.3	1.3
Asian	School										
	District										
	State	5.2	7.5	18.5	48.8	20.1	6.6	10.6	16.4	44.3	22.1
Native Hawaiian/Pacific Islander	School										
	District										
	State	8.5	13.1	25.4	49.2	3.8	19.5	14.8	16.4	42.2	7.0
American Indian	School										
	District										
	State	18.6	19.3	30.7	28.1	3.4	24.1	27.6	25.7	20.7	1.9
Two or More Races	School										
	District										
	State	13.9	19.1	25.9	34.1	7.0	22.0	23.3	22.1	26.9	5.6

**Grade 8 - Students with Disabilities**

Levels	ELA					Mathematics					
	1	2	3	4	5	1	2	3	4	5	
IEP	School	72.7	9.1	18.2	0.0	0.0	45.5	45.5	9.1	0.0	0.0
	District	72.7	9.1	18.2	0.0	0.0	45.5	45.5	9.1	0.0	0.0
	State	51.7	27.1	14.7	6.0	0.5	58.9	25.8	10.1	4.6	0.6
Non-IEP	School	2.4	12.2	31.7	51.2	2.4	19.5	24.4	31.7	24.4	0.0
	District	2.4	12.2	31.7	51.2	2.4	19.5	24.4	31.7	24.4	0.0
	State	9.8	17.6	28.7	37.6	6.2	15.7	23.4	25.0	31.2	4.7

**Grade 8 - Economically Disadvantaged**

Levels	ELA					Mathematics				
	1	2	3	4	5	1	2	3	4	5
<b>Free/Reduced Price Lunch</b>										
School	28.0	20.0	36.0	16.0	0.0	32.0	32.0	28.0	8.0	0.0
District	28.0	20.0	36.0	16.0	0.0	32.0	32.0	28.0	8.0	0.0
State	22.6	24.2	28.2	23.1	1.9	31.2	29.0	22.3	16.5	1.0
<b>Not Eligible</b>										
School	7.4	3.7	22.2	63.0	3.7	18.5	25.9	25.9	29.6	0.0
District	7.4	3.7	22.2	63.0	3.7	18.5	25.9	25.9	29.6	0.0
State	8.1	13.8	25.7	43.6	8.8	12.0	18.7	23.9	38.4	7.1

**High School****High School - All**

Levels	ELA					Mathematics				
	1	2	3	4	5	1	2	3	4	5
School	6.8	11.4	29.5	38.6	13.6	7.7	19.2	30.8	42.3	0.0
District	6.8	11.4	29.5	38.6	13.6	7.7	19.2	30.8	42.3	0.0
State	19.2	20.9	25.8	28.3	5.8	21.5	29.5	27.2	21.1	0.7

**High School - Gender**

Levels	ELA					Mathematics				
	1	2	3	4	5	1	2	3	4	5
<b>Male</b>										
School	5.6	22.2	38.9	27.8	5.6	13.3	26.7	26.7	33.3	0.0
District	5.6	22.2	38.9	27.8	5.6	13.3	26.7	26.7	33.3	0.0
State	25.0	22.9	24.9	23.4	3.7	23.8	29.9	25.6	19.8	0.8
<b>Female</b>										
School	7.7	3.8	23.1	46.2	19.2	0.0	9.1	36.4	54.5	0.0
District	7.7	3.8	23.1	46.2	19.2	0.0	9.1	36.4	54.5	0.0
State	13.1	18.8	26.7	33.4	8.0	19.1	29.1	28.8	22.4	0.6

**High School - Racial/Ethnic Background**

Levels	ELA					Mathematics					
	1	2	3	4	5	1	2	3	4	5	
White	School	4.7	11.6	30.2	39.5	14.0	7.7	19.2	30.8	42.3	0.0
	District	4.7	11.6	30.2	39.5	14.0	7.7	19.2	30.8	42.3	0.0
	State	13.5	17.5	26.2	35.1	7.8	16.0	25.5	30.2	27.3	1.0
Black	School										
	District										
	State	33.3	28.6	23.3	13.4	1.3	35.5	36.2	19.6	8.7	0.1
Hispanic	School										
	District										
	State	24.5	25.0	27.5	20.8	2.1	23.2	33.4	27.0	16.1	0.3
Asian	School										
	District										
	State	6.3	11.4	21.1	43.4	17.8	8.3	18.3	29.1	40.8	3.5
Native Hawaiian/Pacific Islander	School										
	District										
	State	7.2	18.0	29.7	37.8	7.2	11.2	31.8	23.4	31.8	1.9
American Indian	School										
	District										
	State	23.7	19.7	30.6	21.2	4.8	25.6	31.9	24.2	18.1	0.3
Two or More Races	School										
	District										
	State	16.7	19.2	25.1	30.2	8.8	21.3	27.9	26.5	23.3	0.9

**High School - Economically Disadvantaged**

Levels	ELA					Mathematics					
	1	2	3	4	5	1	2	3	4	5	
Free/Reduced Price Lunch	School	23.1	15.4	7.7	38.5	15.4					
	District	23.1	15.4	7.7	38.5	15.4					
	State	28.0	26.1	25.6	18.4	1.9	28.0	34.3	24.2	13.3	0.2
Not Eligible	School	0.0	9.7	38.7	38.7	12.9	8.3	16.7	33.3	41.7	0.0
	District	0.0	9.7	38.7	38.7	12.9	8.3	16.7	33.3	41.7	0.0
	State	12.4	16.8	25.9	36.0	8.9	15.3	25.0	30.0	28.5	1.2