

CARVER CLUSTER

Mission:

Using the STEAM Model (Science, Technology, Engineering, Arts, and Mathematics), the Carver Cluster will enhance and strengthen overall academic programs while maintaining a safe and nurturing environment that prepares students for college and career readiness.

Vision:

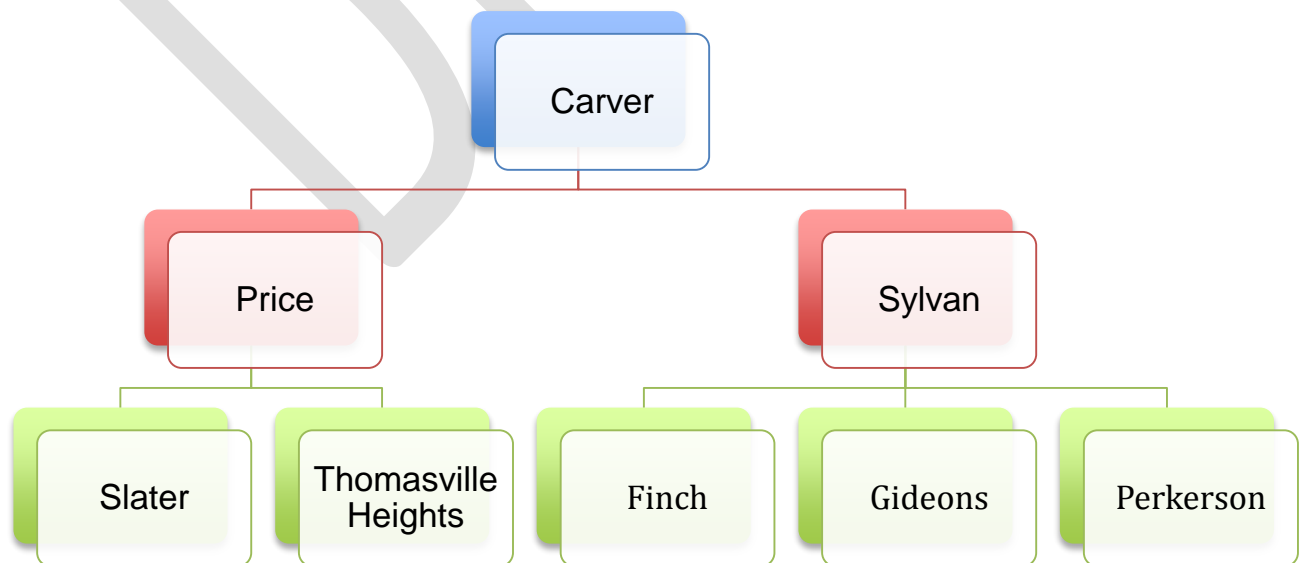
The Carver Cluster will produce high-performing, college and career ready students that are globally aware and ready to have a positive impact on society.

Priorities:

- Developing cultural norms and expectations
- Professional development for college and career options at all grade levels
- Emphasis on S.T.E.A.M throughout Cluster
- Foreign Language will play a role in our curricular vision. Foreign Language will be offered at all 3 levels, K-12
- Counseling addresses the needs of our students and families as they live in the community in which we serve. It also addresses our needs to enhance the nurturing environment that is vital to our growth
- Teachers and staff are committed to the clusters' mission and vision; it's collaborative and focused on research based-teaching practices
- A cluster where a safe environment where stakeholders are working collaboratively for common goal for student achievement
- Providing a reading teacher (certified) at the secondary level

Signature program/cluster focus:

STEAM and Early College



DOUGLASS CLUSTER

Mission:

The Douglass Cluster as a community is committed to providing customized support to effective educators whose charge is to prepare and develop students for excellence through positive, engaging, inquiry-based instructional practices.

Vision:

The Douglass Cluster is an innovative twenty-first century skills region that inspires self-directed learners to become high achieving college and career ready graduates.

Priorities:**Cluster Academic Framework**

- Early learning centers for all 3 and 4 year olds
- Project-Based Learning PK-12
- Consistent cluster level master schedules

Reading Instruction

- Consistent K-2 reading framework, tools, and resources with phonics, vocabulary, and fluency across all elementary schools
- Teacher development to improve effectiveness
- Reading interventions and supports

Mathematics Instruction

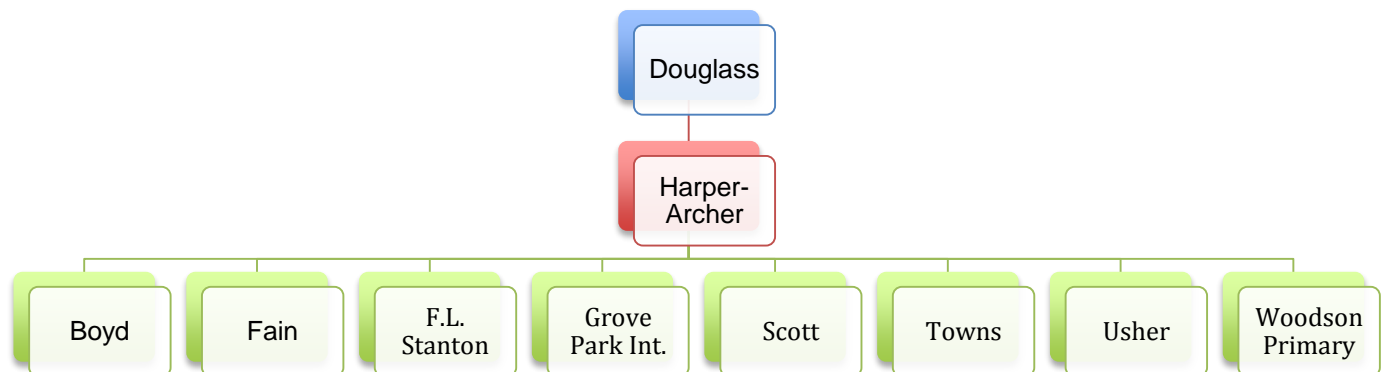
- Consistent Mathematics framework, tools, and resources
- Teacher development to improve effectiveness
- Mathematics interventions and supports

Student Support

- Cluster-wide and school-based “wrap-around” services through community partnerships
- Additional counselors and social workers
- Increase attendance and decrease suspensions
- Increased cluster-wide and school-based parent engagement

Signature program/cluster focus:

TBD



GRADY CLUSTER

Mission:

With a caring culture of trust and collaboration, every student will graduate ready for college and career.

Vision:

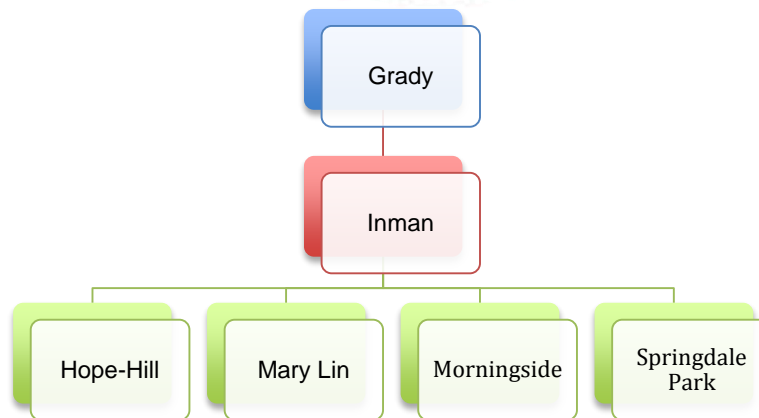
A high-performing cluster where students love to learn, educators inspire, families engage and the community trusts the system.

Priorities:

- Alignment and Equity
- Wrap around services, early learning and cluster-wide partnerships (grouped 3-5)
- Identify and build on existing successes
- All solutions need to include options for all Grady students.

Signature program/cluster focus:

College and Career Preparatory Program (College and Career Preparatory with an emphasis on Dual Enrollment and Advanced Course/College Credit Opportunities)



JACKSON CLUSTER

Mission:

Developing inquiry, knowledge, and character: Every student, Every teacher, Every leader, Every day

Vision:

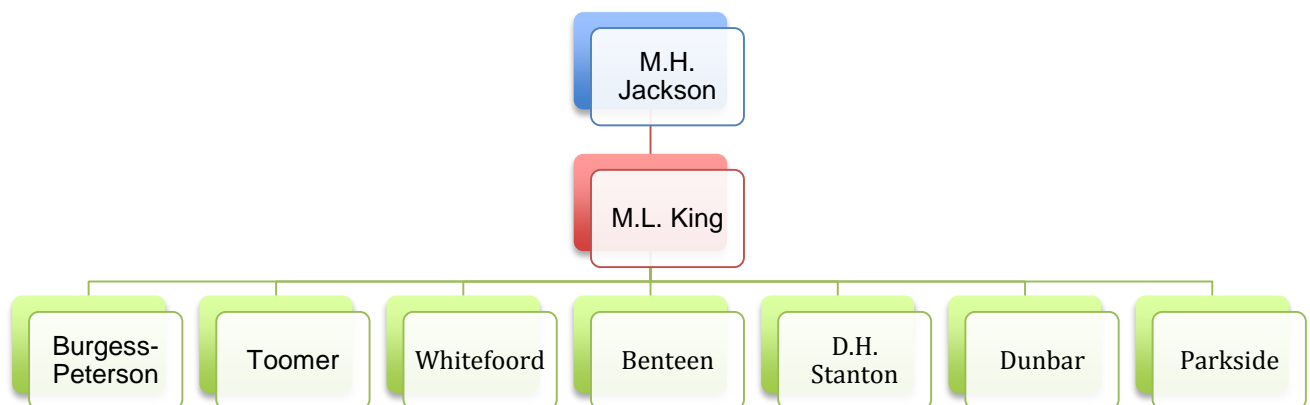
To graduate students who are productive and caring lifelong learners

Priorities:

- Become authorized to deliver International Baccalaureate (IB) at the elementary and middle grades levels to support and foster inquiry, critical thinking, and project based learning
- Increase students' math, reading, and science performance by providing high quality professional development for teachers that changes the way teachers think about teaching math, reading, and science
- Develop a set of cluster wide procedures and protocols that will support the social emotional development of students as well as build a healthy school culture and climate for students, staff and parents (eg. PBIS or No Place for Hate in all schools)
- Increase the student attendance rate cluster wide
- Collaborate and develop systems that will recruit and retain highly effective teachers across the cluster and provide the necessary professional development to enhance the quality of instruction for current teachers
- Determine the best practices for engaging all stakeholders
- Enhance the alignment of the Pre K curriculum with the implementation of the IB instructional model at the elementary level or create an Early Learning Center in the cluster that houses birth to 4 years

Signature program/cluster focus:

International Baccalaureate (IB)



MAYS CLUSTER

Mission:

The mission of the Mays Cluster is to prepare students to become 21st century leaders who are ready for college, career, and beyond.

Vision:

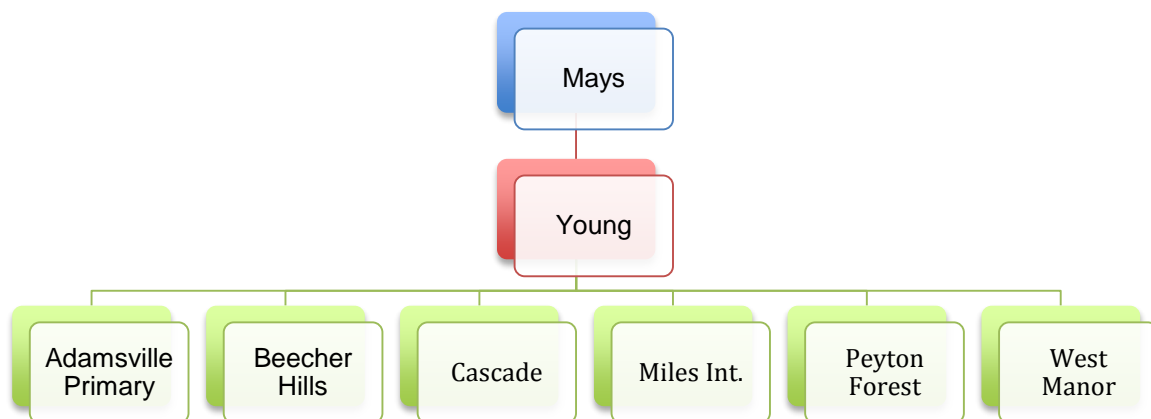
The vision of the Mays Cluster is to provide instruction that is standards based, integrated and rigorous; focusing on the whole child, while collaborating with all constituents to prepare students for graduation and beyond.

Priorities:

- Provide a curriculum at all schools and at all levels that supports project/inquiry based learning and rigorous assessments.
- Increase students' math, reading, social studies and science performance by providing a curriculum that allows for integration of these subjects.
- Develop a set of cluster wide procedures and protocols that will support the social emotional development of students as well as build a healthy school culture and climate for students, staff and parents (e.g., IB Learner Profiles & Attitudes, PBIS or No Place for Hate in all schools.)
- Ensure teachers have the professional learning to implement balanced literacy and numeracy with fidelity across all levels.
- Work to provide opportunities for students to have access to Advanced Math & Advanced LAR courses, where appropriate, as determined by assessment.
- Develop systematic methods of engaging parents and plan engagement opportunities and activities that are aligned to the K-12 curricular vision.
- Enhance the alignment of the Pre-K curriculum with the implementation of the cluster instructional model at the elementary level, or Create an Early Learning Center in the cluster that houses birth to 4 years.
- Have uniform offerings for fine arts, computer literacy, foreign language, and science lab at all schools and at all levels.

Signature program/cluster focus:

International Baccalaureate (IB)



NORTH ATLANTA CLUSTER

Mission:

The North Atlanta cluster will implement IB with depth and fidelity in order to develop inquiring, knowledgeable, and caring young people who will graduate ready for college and career.

Vision:

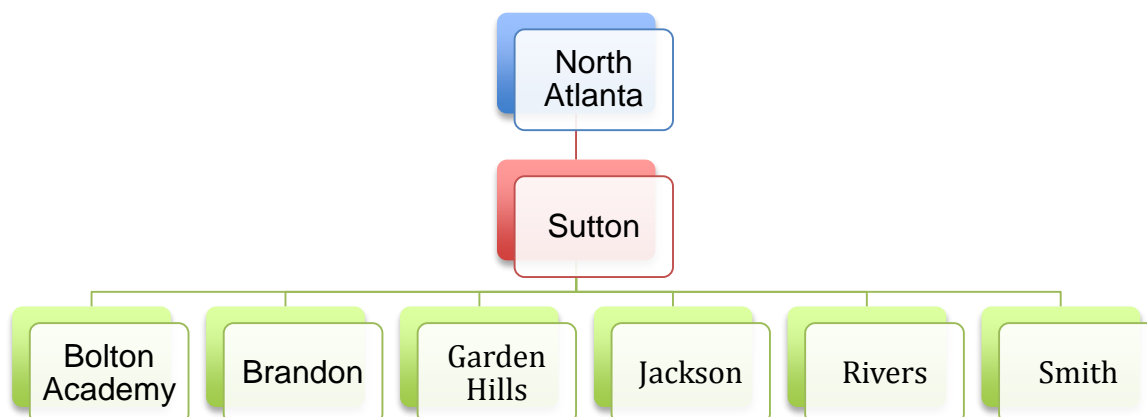
The North Atlanta cluster will be the highest performing cluster where students, educators, and families work together to create a better and more peaceful world through intercultural understanding and respect.

Priorities:

- Ensure a highly qualified, dedicated IB Coordinator is in place at each school
- Provide ongoing IB training for teachers and leaders
- Increase horizontal and vertical planning and teaming opportunities for teachers and leaders in order to facilitate a higher percentage of students entering the IB DP program
- Accommodate flexible planning and delivery of instruction to meet IB program standards and improve academics, specifically in math and science
- Implement consistent strategies to strengthen the IB Learner Profile and Transdisciplinary Skills
- Develop leadership skills using strength-based activities for all staff
- Obtain a Bilingual ESOL Community Liaison to strengthen parent engagement within the cluster

Signature program/cluster focus:

International Baccalaureate (IB)



SOUTH ATLANTA CLUSTER

Mission:

Cultivating a universal culture of excellence through collaboration, academic achievement, personal responsibility, respect and a commitment to service

Vision:

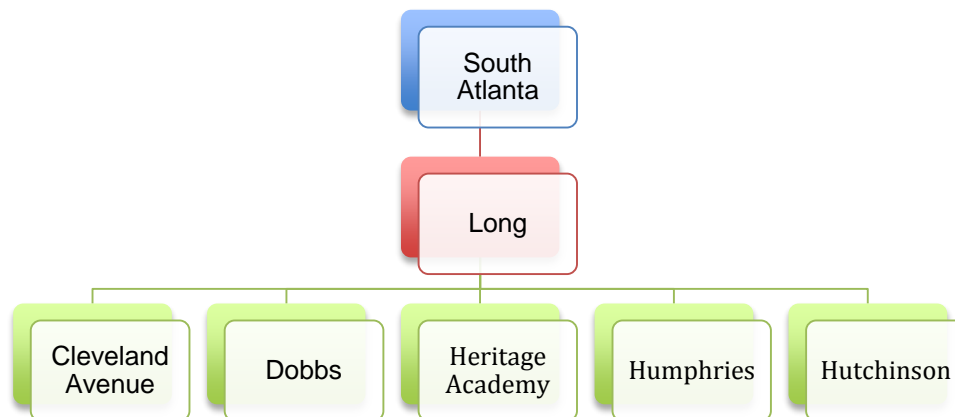
A high performing cluster where every student graduates with college and career readiness

Priorities:

- Increase student enrollment and attendance rates cluster wide
- Develop a pipeline into college and the workforce for students and parents via partnerships with local college, agencies, and colleges
- Implement a Pre K – 12 STEAM/CAREER curriculum based on fostering critical thinking skills, inquiry, and real-world connection while integrating fine and performing arts into the curriculum
- Develop a set of cluster wide resources, procedures, and protocols that will support the social emotional development of students as well as build a healthy school culture and climate for students, staff and parents
- Intentionally focus on adult education through the development of GED and Life Skills programs
- Implement consistent cluster wide positive behavior interventions

Signature program/cluster focus:

STEAM



THERRELL CLUSTER

Mission:

Emphasizing a student centered culture of collaboration, students will graduate ready for college and career.

Vision:

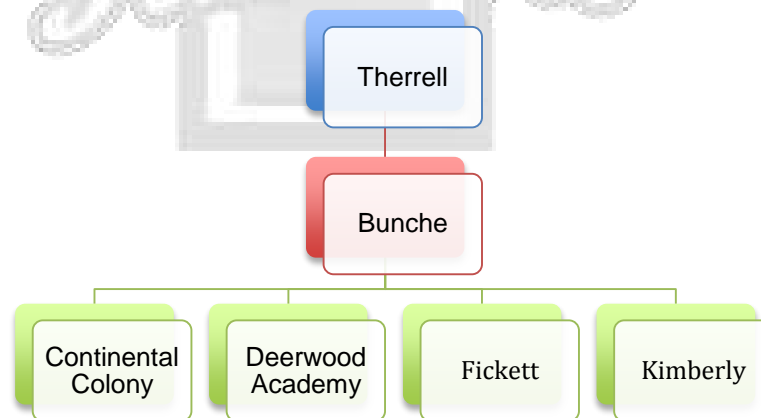
A high performing cluster where all stakeholders work together to ensure students are empowered to become 21st century globally competitive citizens.

Priorities:

- Vertical alignment with K-12 literacy program. Balanced Literacy.
- STEM – Science and mathematics initiative
- Implement social and emotional services using a wrap-around services model.
- Balance of Remediation and Rigor

Signature program/cluster focus:

TBD



WASHINGTON CLUSTER

Mission:

Within a structured and supportive community, the Washington Cluster will continue the legacy of excellence by preparing high school students to be college and career ready and join other leaders, participating citizens and advocates who act as community builders.

Vision:

A high-performing STEAM and Early College cluster where all students are inspired and supported to reach their highest potential.

Priorities:

- S.T.E.A.M Program K-12
- Early College Program K-12
- Implement social and emotional services using a wrap-around services model.

Signature program/cluster focus:

STEAM and Early College

