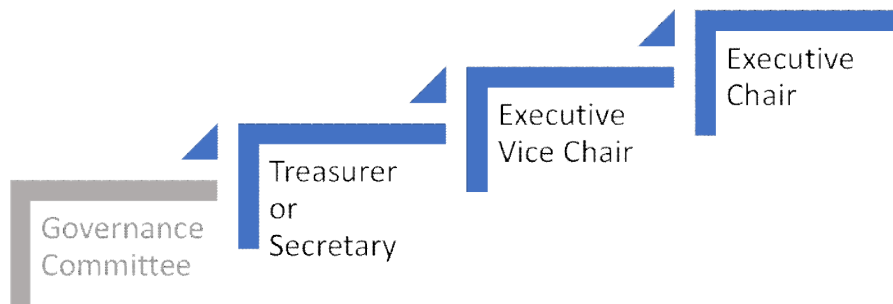


Board member and school leader succession plans

The longevity and long-term success of FSMA and its students is paramount to both our school administration, and our board. To that end, the Board operates under the following succession approach:



Whenever possible, the Treasurer or Secretary should advance to Executive Vice Chair, and the Executive Vice Chair should advance to Executive Chair. Note that there can be exceptions to this design. For example, if members of the board have professional conflicts inhibiting them from leading the board. In the event that the outlined succession plan is not possible, it is the responsibility of the Governance Committee to craft a recommended path forward.

In terms of Head of School succession planning, as previously mentioned, should immediate/unforeseen succession be necessary, our Director of Education, Liz Madden, would assume Head of School duties until a successor is identified.