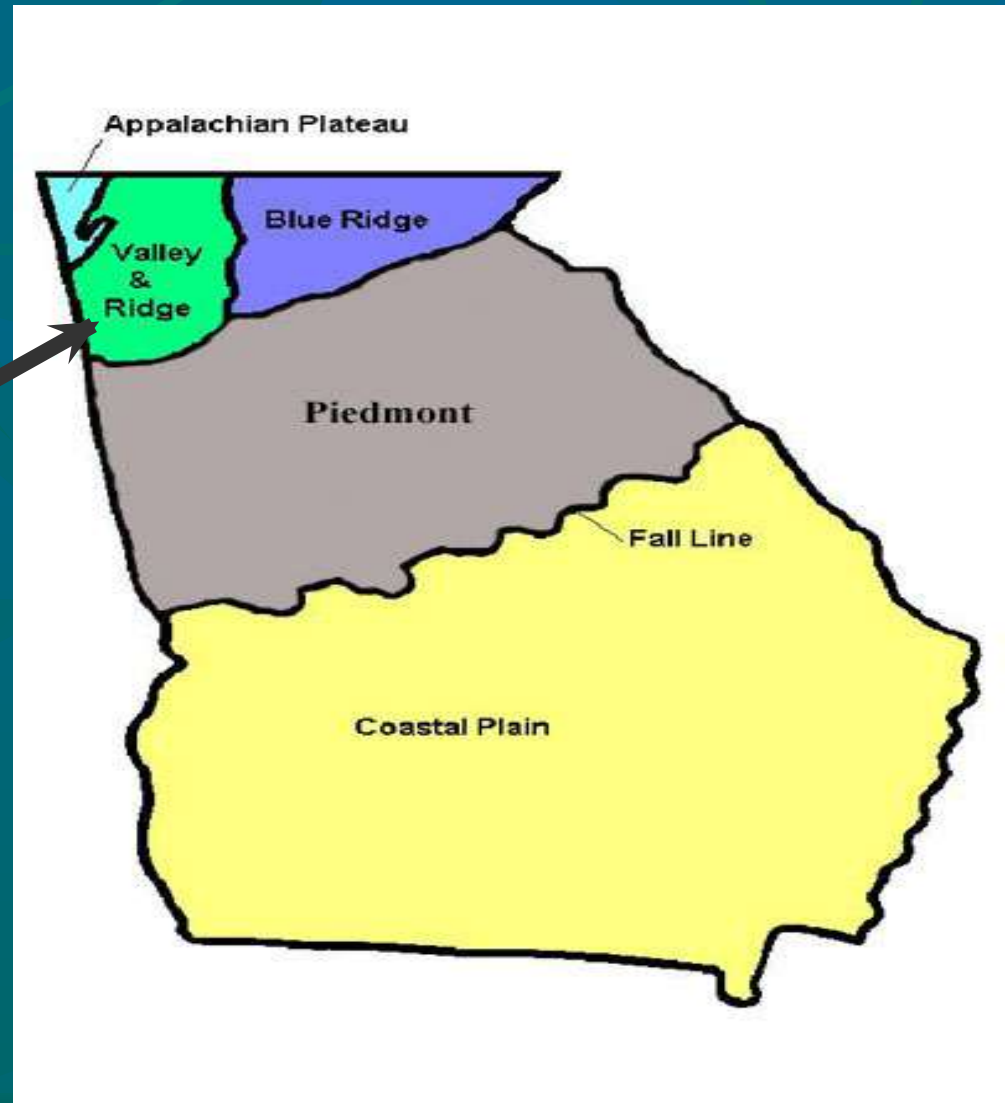


# **The Five Regions of Georgia**

Ridge & Valley, Appalachian,  
Blue Ridge, Piedmont, and  
Coastal Plain by Heather Robertson

# Days 1: Ridge and Valley



Valley and Ridge Located  
in Northwest Georgia  
(GA)

# Ridge & Valley

- The Ridge and Valley Region is located in the Northwest part of Georgia
- Ridge and Valley are split into four parts--the Cumberland Plateau, the Chickamaunga Valley, the Armuchee Ridges, and the Great Valley.
- Plants vary based on the area  
Moisture(water in air and ground), the soil type, and elevation



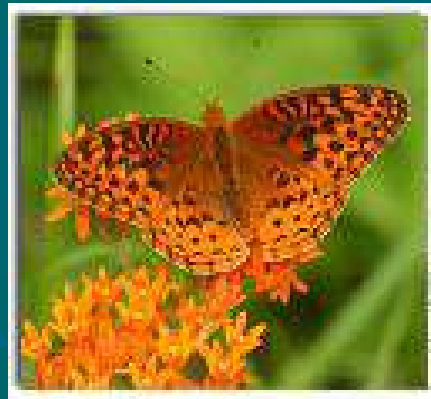
# Ridge and Valley



- Low open valleys and narrow ridges run parallel (side by side)
- There are flat farmlands that have fields of grain, pastures of cows and orchards of apples
- The valleys are divided by limestone capped ridges
- Most of the land is covered with forest

# Wild Life

- The Ridge and Valley is a great place for bird watchers. Birds include chestnut-sided warbler, worm-eating warbler, red-tailed hawk, cardinals and many other bird species.
- Butterflies spotted in the Ridge and Valley are the Aphrodite fritillary and northern metalmark.



# Blue Ridge and Valley Wild Life

- Mammals that are seen here are the deer, raccoon, opossum, striped bobcats, skunks, and a variety of other animals.

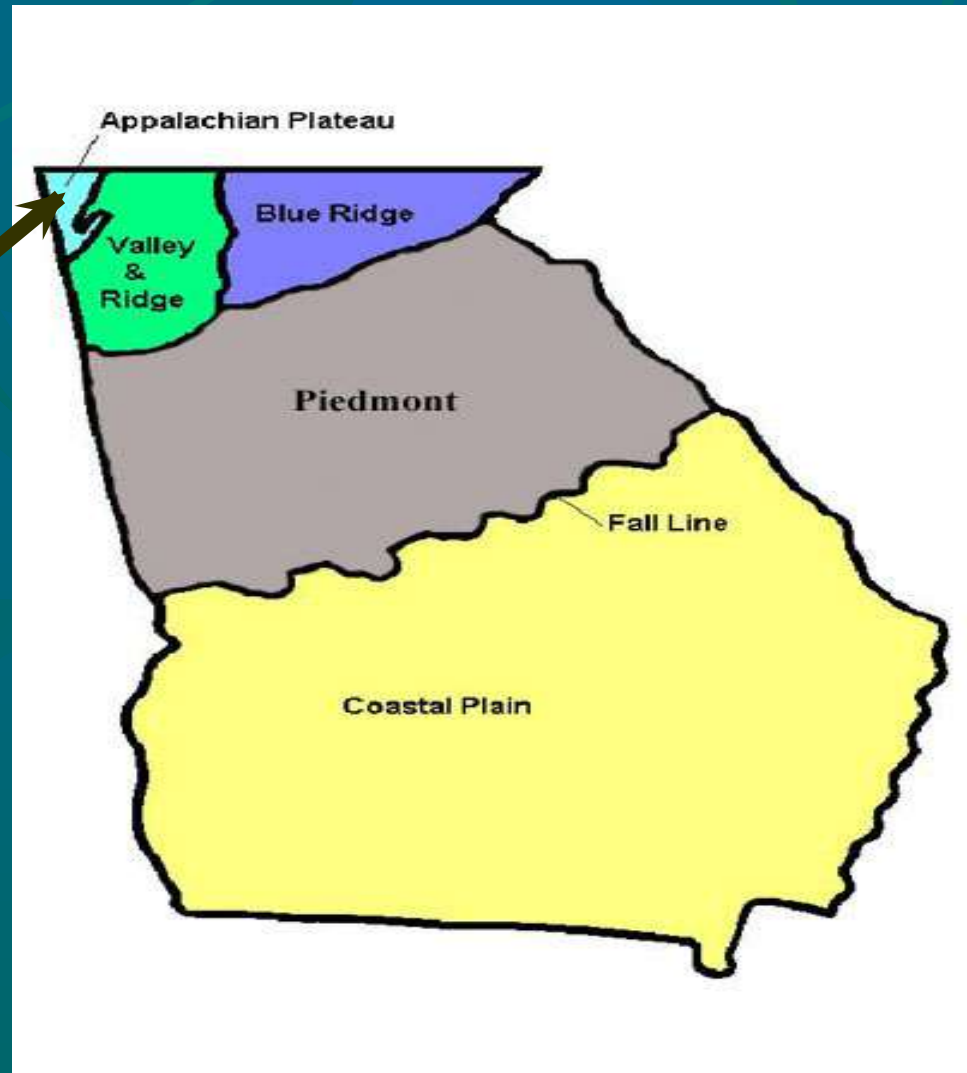


- Many reptiles and amphibians live here as well including timber rattlesnakes and salamanders.





# Day 2: Appalachian



Appalachian is located in the Northwestern Corner of Georgia (GA)

# Appalachian

- The Appalachian Plateau is a mountainous region with many streams and rivers flowing through them.



- The Appalachian Region is located in the Northwestern most corner of the state of GA.
- It marks the beginning of the Appalachian trail.



# Appalachian



- This region is mostly covered by Oak Forests: **basswood, sugar, maple, tulip poplar, beech, birch, and hemlock** .
- Azaleas and mountain laurel are found on the ground
- The forest brings in many tourists and helps support the wood industry which makes furniture and frames of homes
- The soil in the Appalachian Region is clay based. The rocks that are found in this soil are limestone and clay rocks.

# Wild Life of the Appalachian



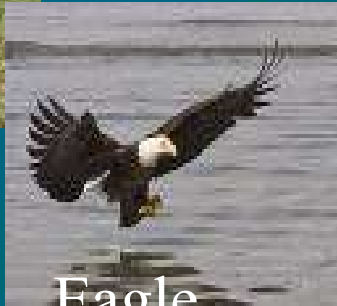
Deer



Spiders



Toads and Frogs



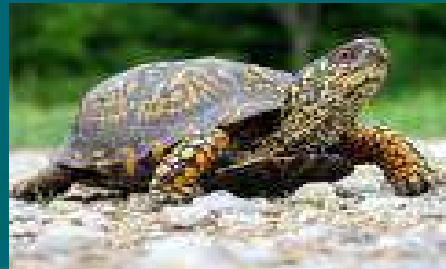
Eagle



Heron



Foxes

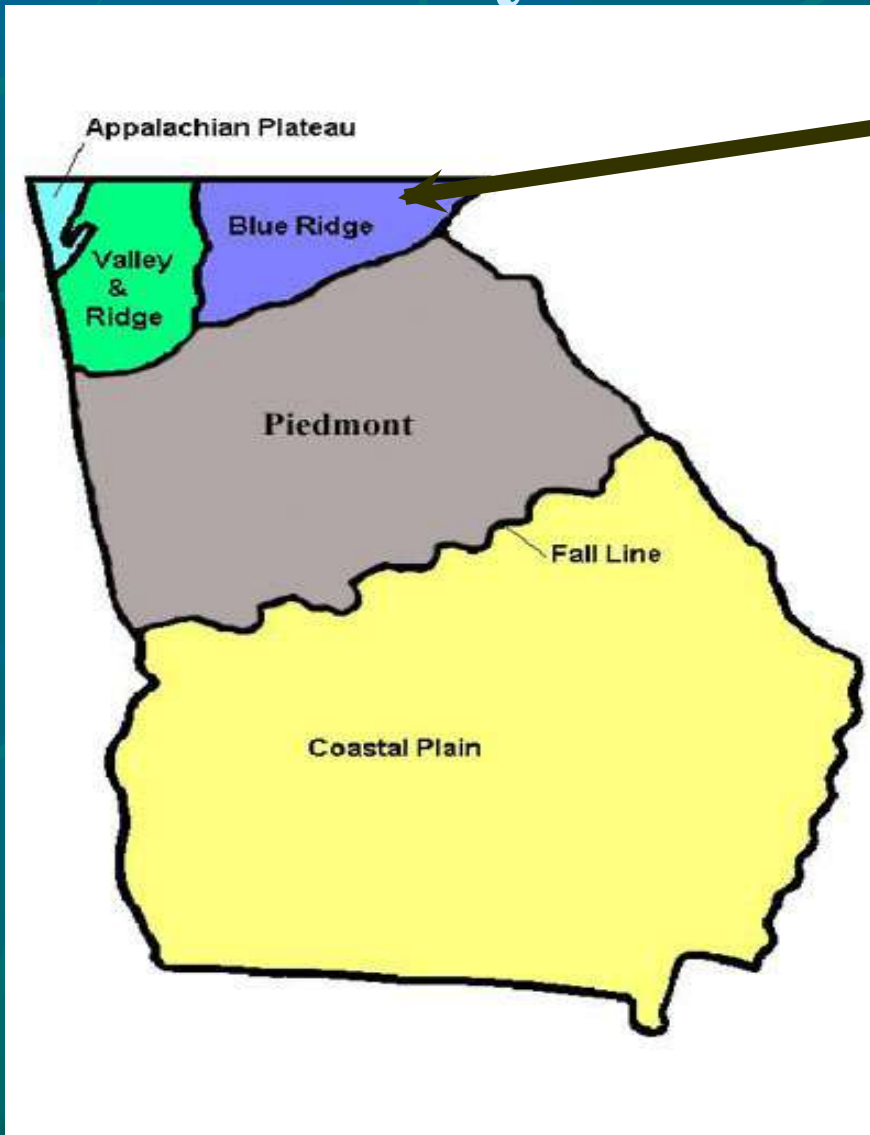


Turtles



Mule  
Druthers

# Day 3: Blue Ridge



Blue Ridge is located in the Northeast Georgia (GA)



# Blue Ridge



- The Blue Ridge Region is apart of the Appalachian Mountain Range. If you visited Blue Ridge the eye would mostly see the beautiful mountains. The Brasstown Bald Peak is 4, 784 Feet which is the highest point in GA.

# Plant Life in Blue Ridge



Hickory



Dwarf Iris



Starry Campion

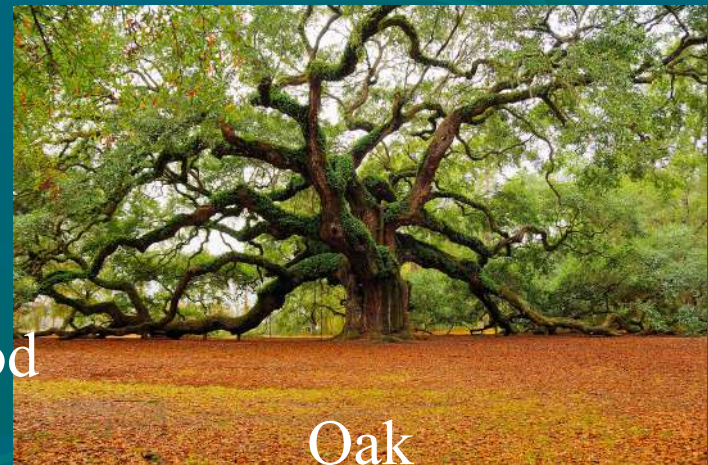
Witch Hazel



Golden Rod



Cardinal Flower



Oak

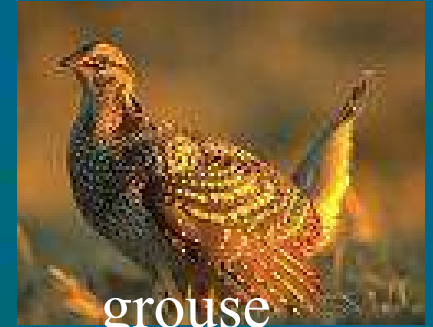


# Wild Life in the Blue Ridge



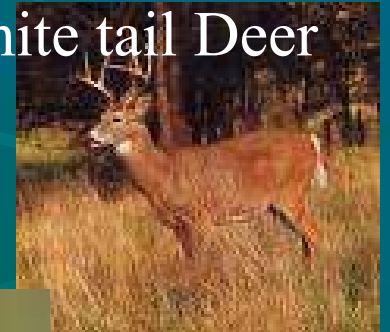
Black bear

Raccoon

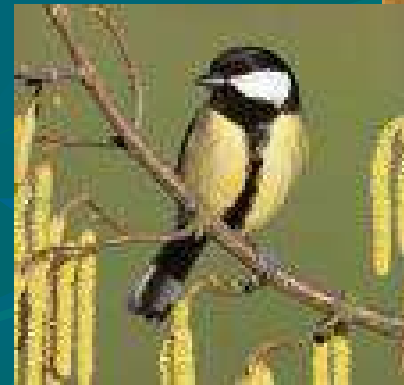


grouse

White tail Deer



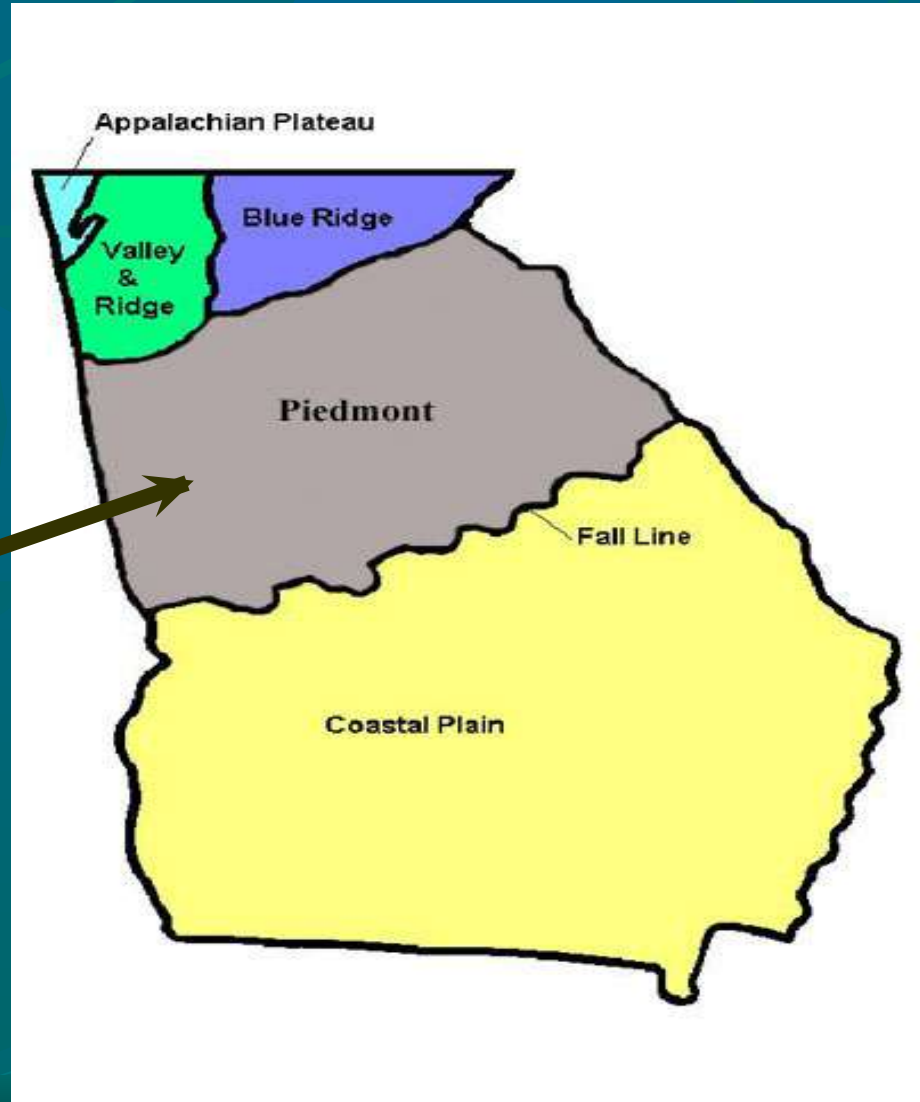
Amphibians



Songbirds

# Day 4 :Piedmont

Piedmont is located  
in the central part of  
Georgia.



# Piedmont

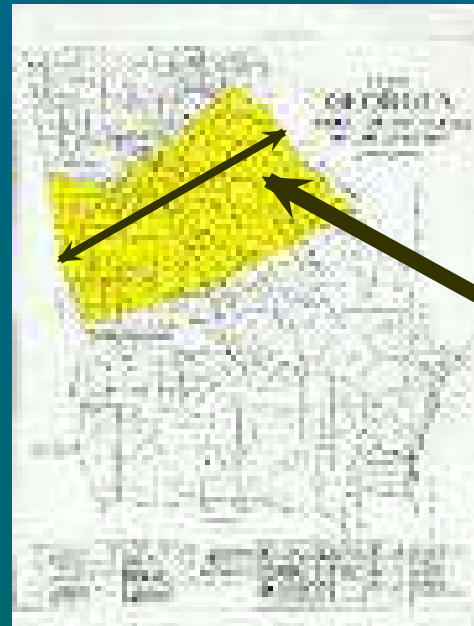
The capital of Georgia  
is located here: Atlanta.



We live in the  
Piedmont!



The Piedmont ends at the  
fall line



The Piedmont  
region  
stretches from  
Alabama to South  
Carolina

# Wildlife

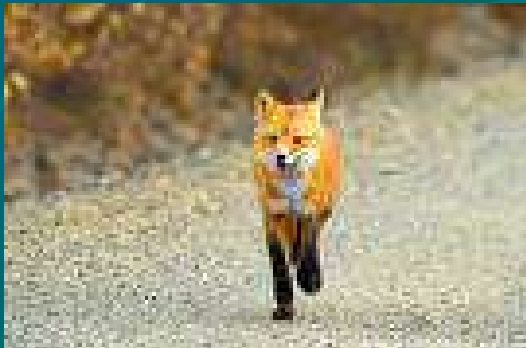


Bat

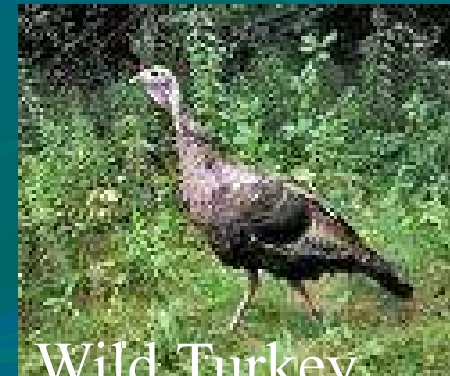
The Piedmont is home to the Eastern Pipistrellus (Bat), Scalopus aquaticus (mole), and the Red Fox.



Mole



Red Fox



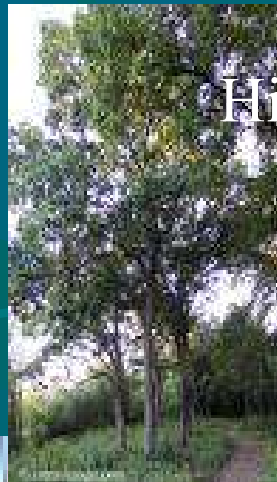
Wild Turkey

# Plant Life

- The wetlands in the Piedmont hold water from many rivers.



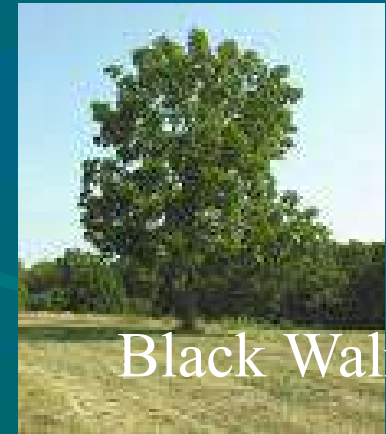
Riverbirch



Hickory



Sweetgum



Black Walnut



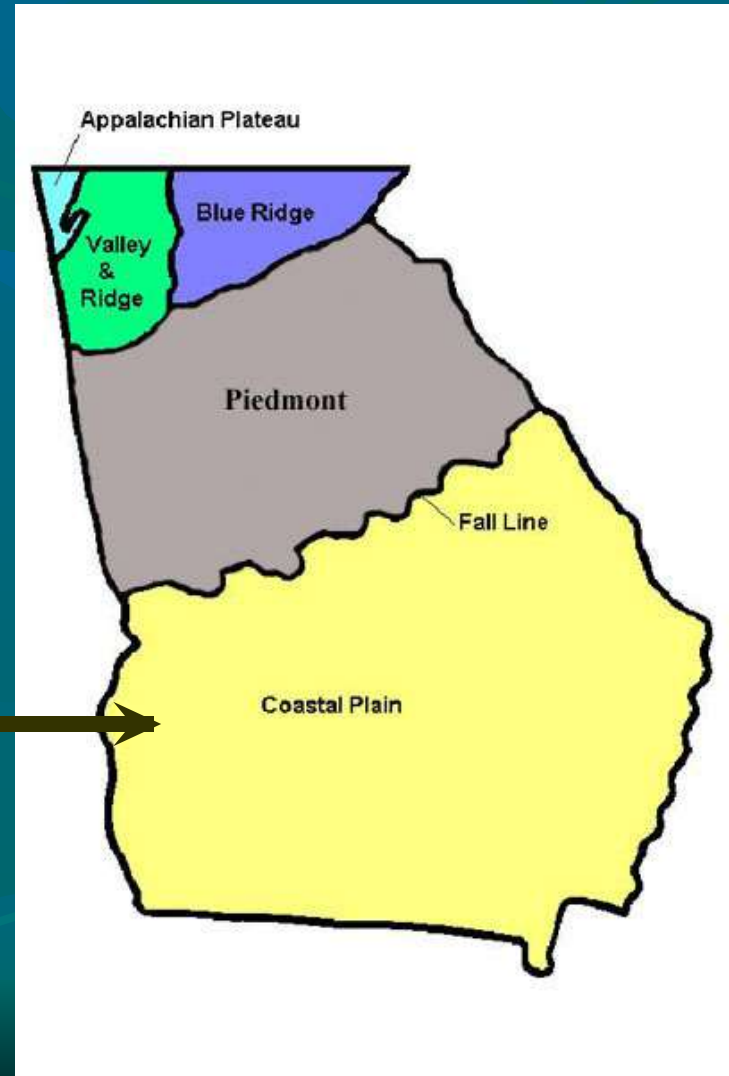
Cattails

Loblolly Pine



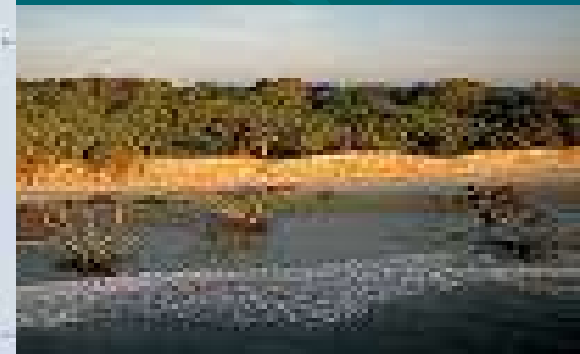
# Day 5: Coastal Plain

The Coastal Plains are located in the Southern part of Georgia.

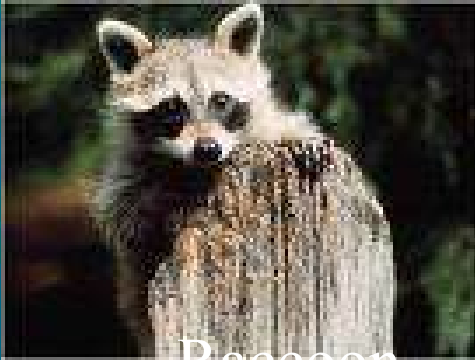


# Coastal Plains

- The Coastal Plains are divided into an upper and lower plains
- Upper Part is the agricultural part
- Lower is the coastal part with the Atlantic Ocean and the swamps



# Wild Life



Raccoon



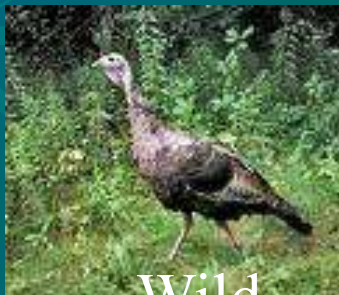
Songbirds



Deer



Bobcat



Wild  
Turkey



Opossum



Quail

# Endangered Species



Red-cockaded  
Woodpecker



Eastern Indigo  
Snake



Flatwoods  
Salamander

# Coastal Animals



Alligator



Turtle

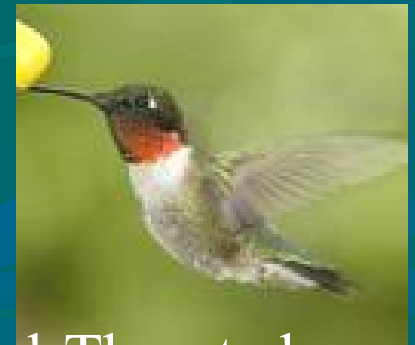


Angel Fish

Over 150 Birds  
& many  
mammals



Sea Turtle



Red-Throated  
Hummingbird



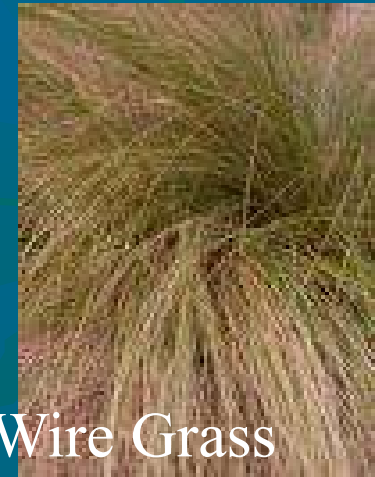
# Plant Life

Loblolly  
Pine



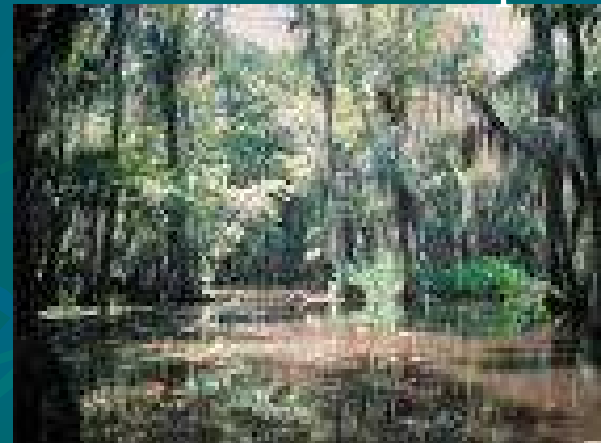
Oak

Wax Myrtle



Wire Grass

Swamp





**THE END**