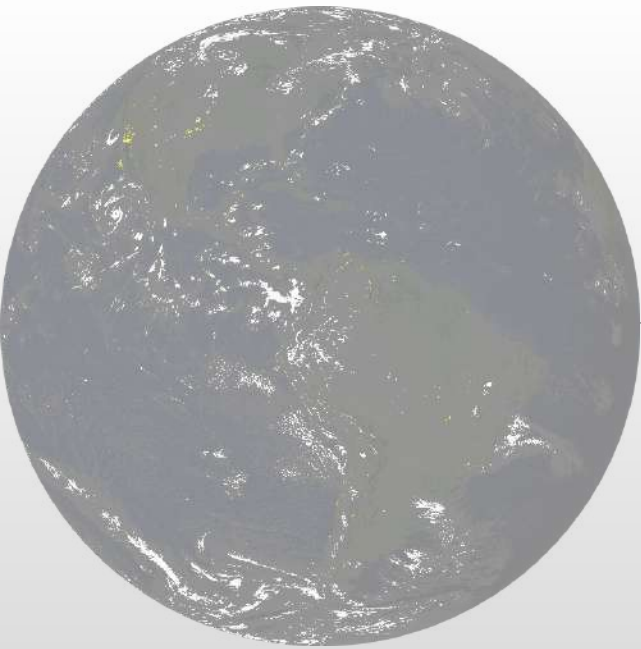




# South Woods Elementary 2021-2022 Title 1 Curriculum Chat



## Our Mission

---

South Woods Elementary School will create a positive learning environment that will instill **good character** and the desire for **academic excellence**, fostering the development of **caring, productive, and digital citizens** in the global world.

# What does it mean to be a Title I school?

---

South Woods Elementary is one of four Title 1 schools in the St. Johns County School District. This mean we receive Federal funds through Title 1. The purpose of Title 1 is to provide **supplemental funds** to assist schools who have a larger concentrations of economically disadvantaged students meet their educational goals. The goal of Title I is for every\_child to receive a high-quality education.

## Title I can help:

Children be more successful in school

Parents to have a voice in their child's education

Parents to collaborate with teachers

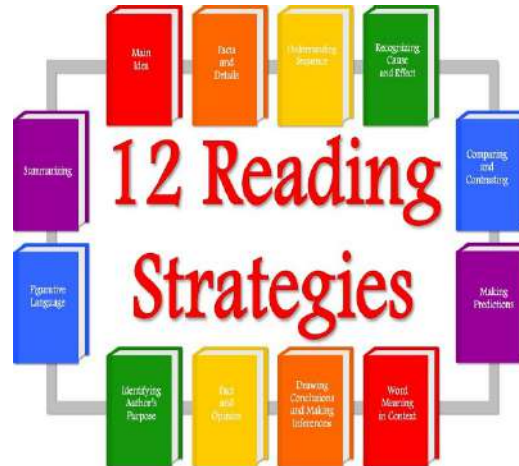
# How is Title I funding used at South Woods?

---

Staff



Materials



Parent Involvement



# Interventionist Team

---

K & 1 Jenny Moore-Jones

2 & 3 Amber Daniels

4 & 5 Margo Meyer

The role of an Interventionist at South Woods Elementary is to support student achievement in the area of Reading/Math, with special attention to reading.



CHARACTER COUNTS! uses its **Six Pillars of Character**: trustworthiness, respect, responsibility, fairness, caring, and citizenship as a foundational strategy while using the **TEAM approach** and incorporating other character education best-practices. Besides promoting a focus on a positive school climate, other defining elements of CHARACTER COUNTS! are intensive decision-making strategies, mindfulness, growth mindset, and behavioral change theories. CHARACTER COUNTS! practical strategies produce positive results in the academic, social, emotional, and character development domains (**The Four Wheels of Success**).

# Positive behavior intervention supports

---



At south woods elementary, we s.o.a.r.



We will be safe, organized, accountable, and respectful



We will never give up

# Schedules

---

## DAILY

8:00-8:25 Arrival/breakfast

8:25-8:55 morning meeting

8:55-10:25 Math

10:00-10:25 Science

10:25-11:00 Specials

11:00-11:25 Social studies

11:30-12:25 Lunch and recess

12:25-2:00 ELA

2:00-2:35 Target

2:35-2:45 pack up/snack

2:45 dismissal

## SPECIALS

Art

Physical education (PE)

Music

Media

Computers



# Curriculum

---

**ELA**



**Math**



**Science & Social  
Studies**



# Reading or “ELA”

---

- Students will be exposed to literature, informational text as well as poetry and prose.
- Second graders build “Fluency” by reading texts.
- A “DRA” is a reading assessment that tell your student’s teacher which level your child can fluently read.
- Students complete activities which build their phonic and phonemic awareness, fluency and comprehension.

# Math

---

- Second graders will work to fluently add and subtracting numbers 1 to 20.
- Students will learn place value to 1,000
- Students will use strategies learned to add double digits to 100 fluently.
- Student will add and subtract through 999 using any strategy they choose.
- We will learn about measurement, geometry, and begin multiplication strategies before students mov on the third grade.

# Social Studies and Science

---

- Students are exposed in introductory methods of questioning and testing scientific theories.
- Students will learn about matter, weather, how rocks form, animal life cycles such as butterflies.
- Weather is not taught again so this is a very important year for our young meteorologists.
- Students will study why we need a government, rules and laws, they will learn about Florida and the people who were here before us.

# assessment

---

## **District Assessments**

### Grades K-3 i-Ready in Reading and Math

This is a Computerized, adaptive test

It is Scored in levels (early, mid, and late)

Levels correspond to grade levels (level 2 = second grade)

Other assessment tools used include DRA, classwork, teacher observation, i-Ready, and formative and summative assessment.

## Grading and Reporting

### Grading Policy

- K-2
- The K-2 report card is standards based and is scored using letters. M, P, I

Interim reports

Quarterly report cards

# Grading

---

**M**

Your student has met all areas addressed in the nine weeks

**P**

Your student is progressing towards the areas addresses in the nine weeks.

**I**

Your student is working below expectations.

# Families Matter at South Woods!

**YOU** are  
important to your  
child's education

Your involvement  
shows:

- How education is important to you
- That you and the school are a team





# How to support your student

---

**Work with your child at home**

**Volunteer in the school**

**Communicate with your child and school staff**



# Community Partnership School

---

## Pillars of a Community Partnership School

- Expanded learning
- Student supports
- Family and community engagement
- Collaborative leadership

### Our Core Partners



# 2<sup>nd</sup> grade



-Please be sure to join your student's Class Dojo or Remind account for updates!



-Please be sure to read with your child for 20 minutes a night and to sign the planner daily!



-Check out the Links for Students page for at-home resources!



-As always, please reach out to your student's teacher for any questions or concerns!

Parents and Families,

We thank you for  
your continued  
support!

With Love,  
2<sup>nd</sup> Grade

# Conferences

---



Conferences will be scheduled October 19<sup>th</sup>-29<sup>th</sup>



These will be offered through phone calls



Your child's teacher will contact you to set up your day and time

**It is our belief that a fun yet challenging educational environment will promote a strong and solid core for our children as they travel their educational path.**

