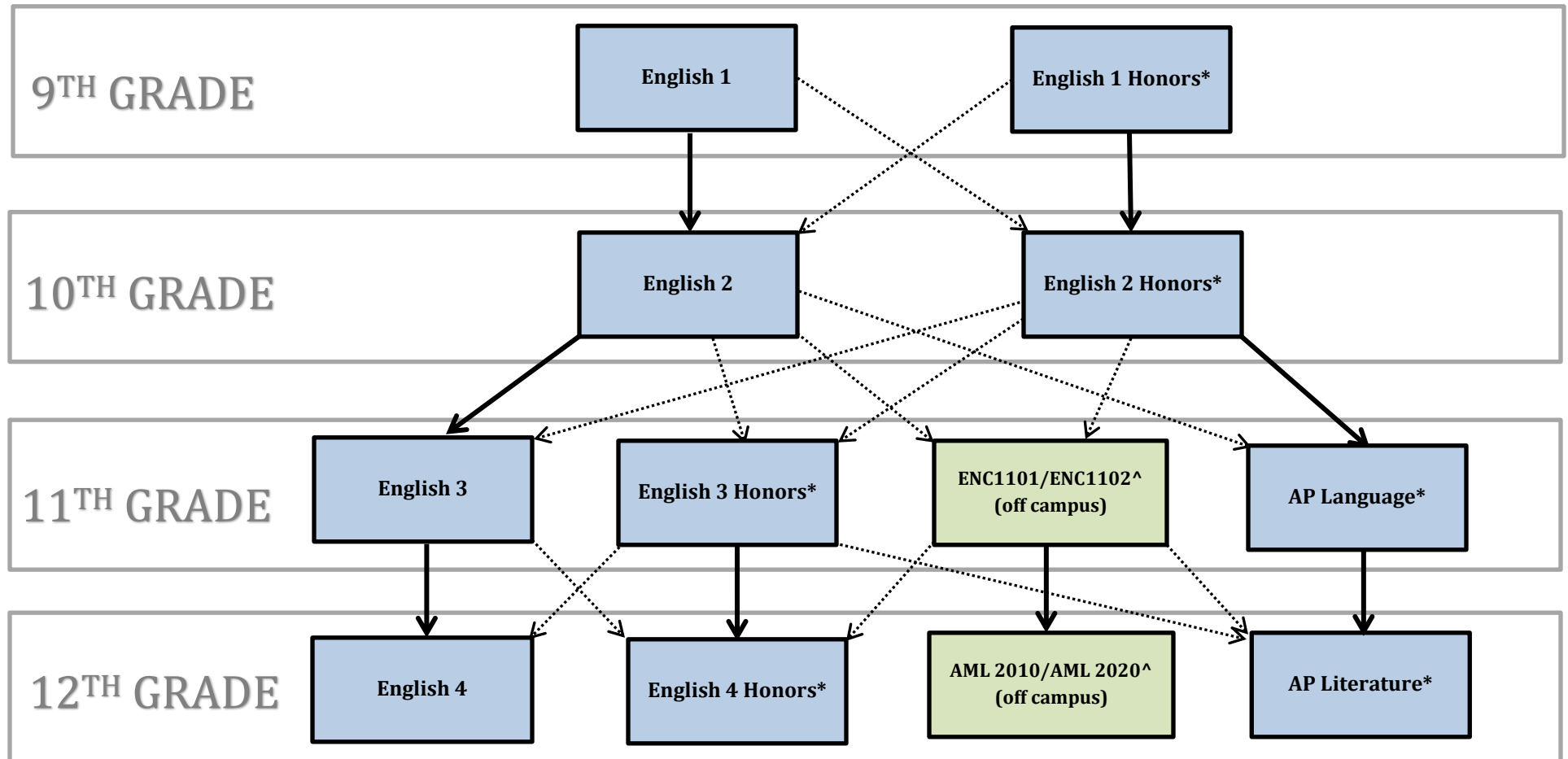


LANGUAGE ARTS PROGRESSION

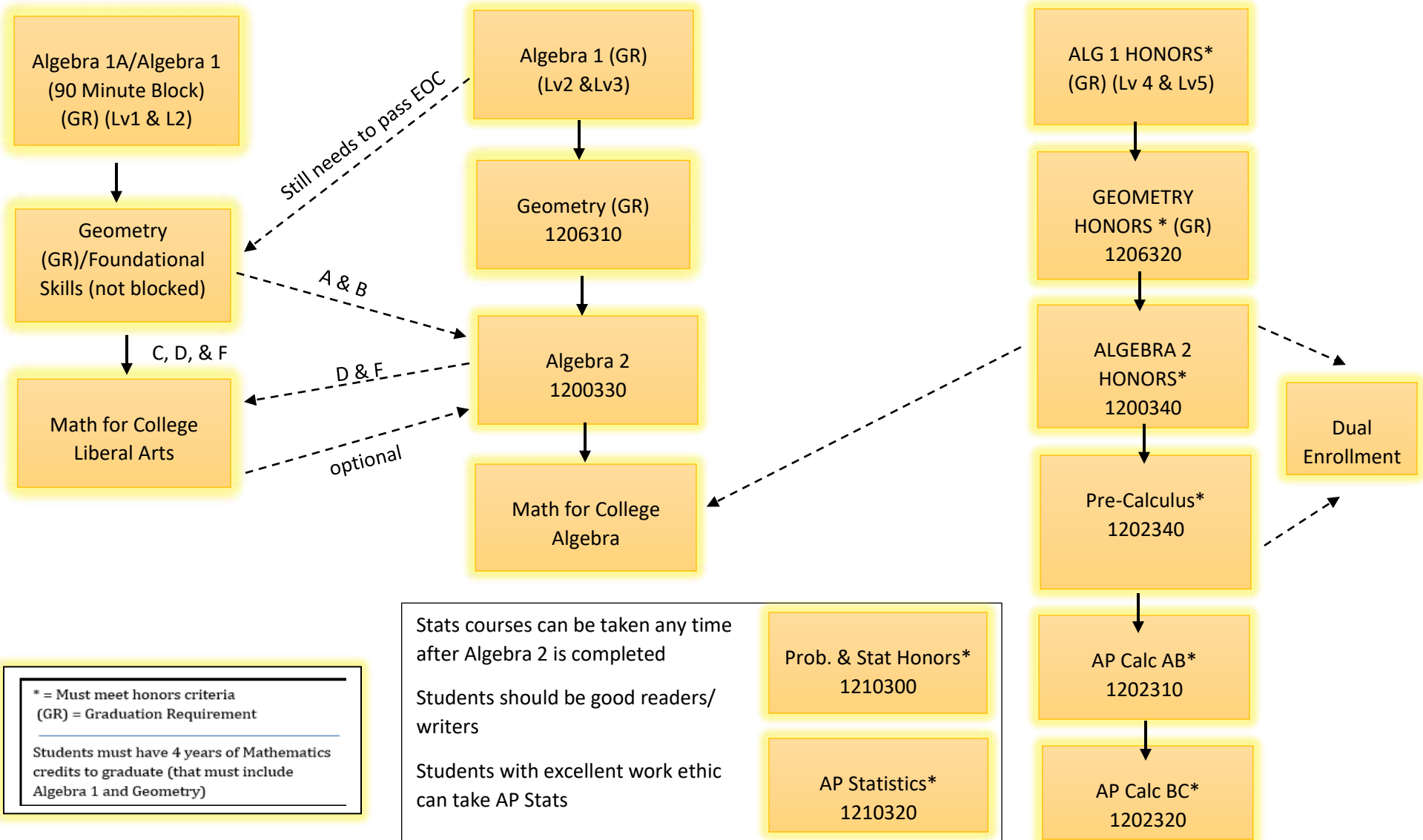
-Bold lines indicate preferred pathway



* = Must meet honors criteria
 ^ = Teacher/Administrative Recommendation Required

MATH Progression

-Course placement based on pre-requisites (not grade level).



* = Must meet honors criteria
(GR) = Graduation Requirement

Students must have 4 years of Mathematics credits to graduate (that must include Algebra 1 and Geometry)

Stats courses can be taken any time after Algebra 2 is completed

Students should be good readers/writers

Students with excellent work ethic can take AP Stats

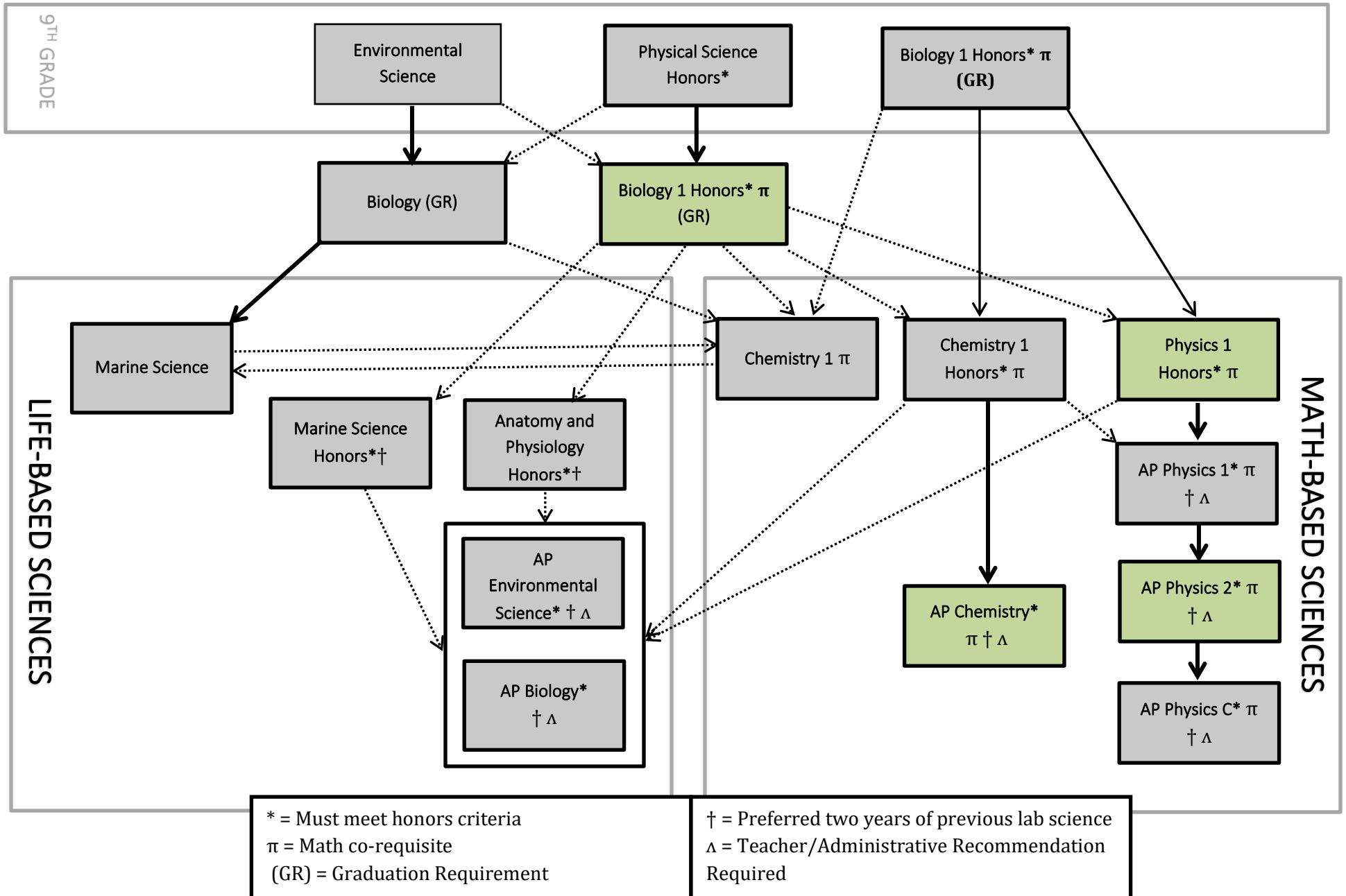
Prob. & Stat Honors*
1210300

AP Statistics*
1210320

SCIENCE PROGRESSION

-Bold lines indicate preferred pathway

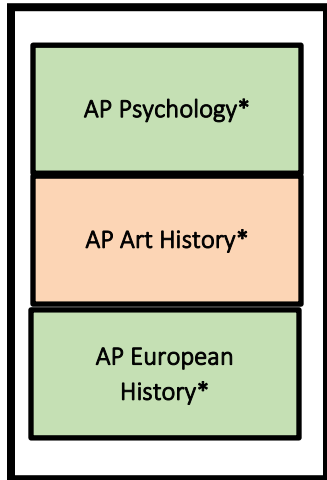
-Course placement dependent on pre-requisites (not grade level)



SOCIAL STUDIES PROGRESSION

-Bold lines indicate preferred pathway

ELECTIVES



* = Must meet honors/AP criteria
 π = Math Co-Requisite Recommended (Pre-Calculus Honors)
 (GR) = Graduation Requirement
 ^ = Must meet Dual Enrollment Criteria

Students must have 3 credits of Social Studies to graduate (that must include World History, American History, Government, and Economics)

