

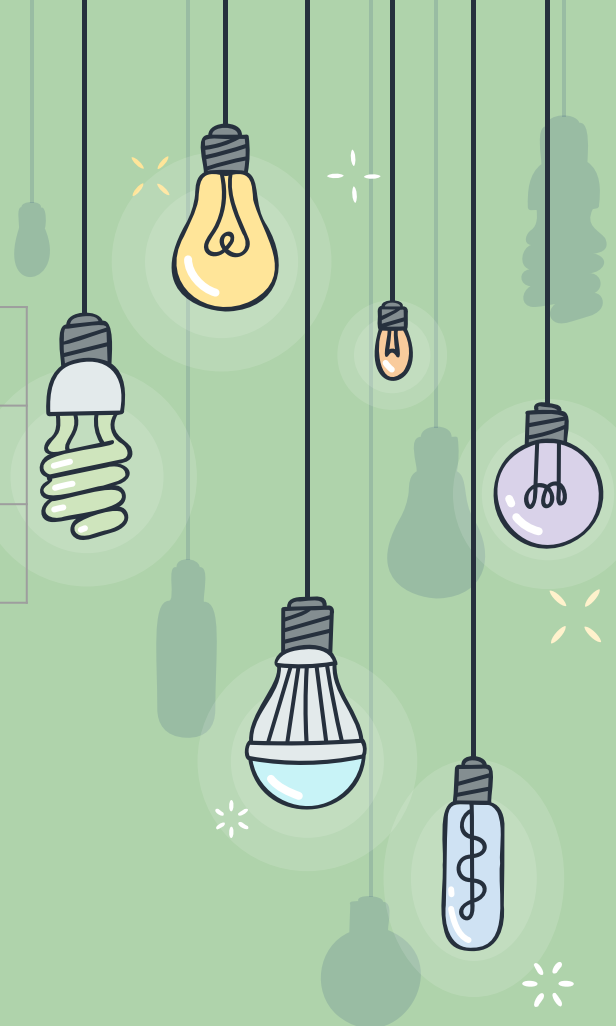
The background features several hanging light bulbs of various shapes and colors (yellow, purple, green, blue) against a teal background. Some bulbs are glowing, and there are small starburst icons scattered around. The text is centered over this background.

WHAT YOU NEED TO KNOW ABOUT
NOELANI ELEMENTARY SCHOOL
23-24 EDITION

OPEN HOUSE SCHEDULE

Principal Welcome/PTA Meeting	5:45p - 6:25p
Session 1	6:30p - 6:50p
Session 2	6:55p - 7:15p

Principal Gusman will be at the IDEA Center if you want to stop by and check out the building and/or talk story.





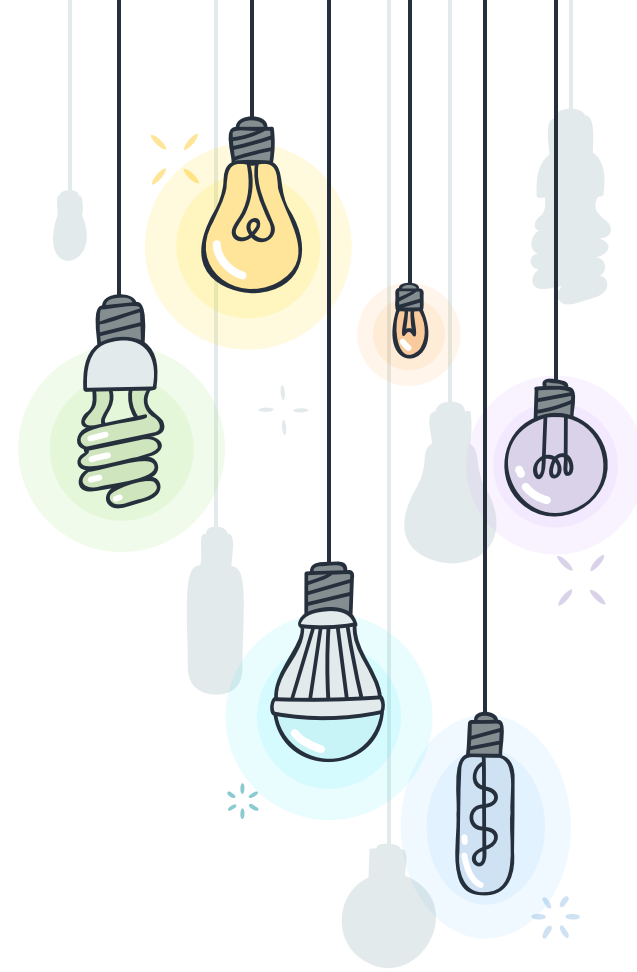
Mr. Stanford Togashi, President

www.noelanipta.org

president@noelanipta.org

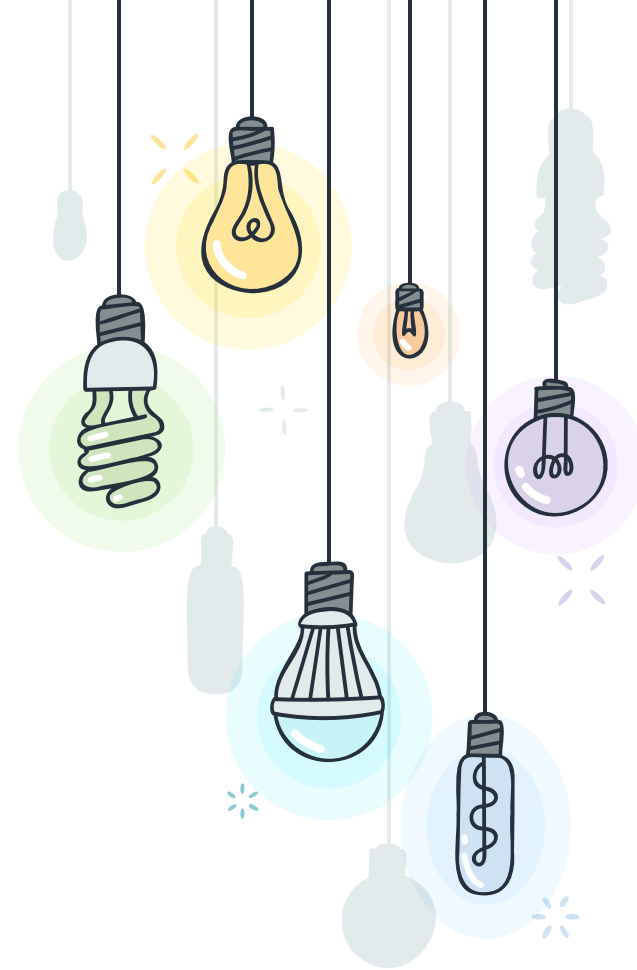
* PTA BOARD

- + President - Stanford Togashi
- + Vice President - Kristen Brummel
- + Treasurer - Catherine Pfeffer
- + Secretary - Michelle Isa



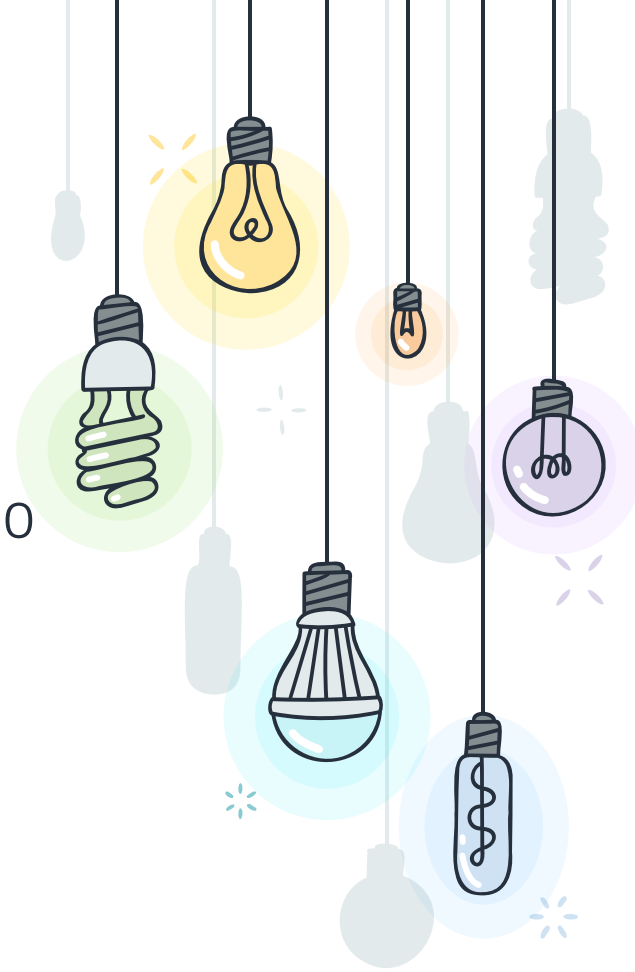
* ABOUT THE PTA

- + We are a non-profit, 501(c)(3) organization and a registered member of the Hawaii State PTSA.
- + We facilitate parent and involvement with the school and community.
- + We help to promote school spirit, relationship-building, and **FUN** through PTA-sponsored events
- + The PTA raises funds to supplement the school budget and help purchase much-needed supplies and equipment, assist with projects, and provide additional educational opportunities for our keiki.



* PTA MEMBERSHIP

- + All current Noelani families are members of the PTA.
- + No membership dues required, but you do need register.
- + Look out for the form sent home with your child.

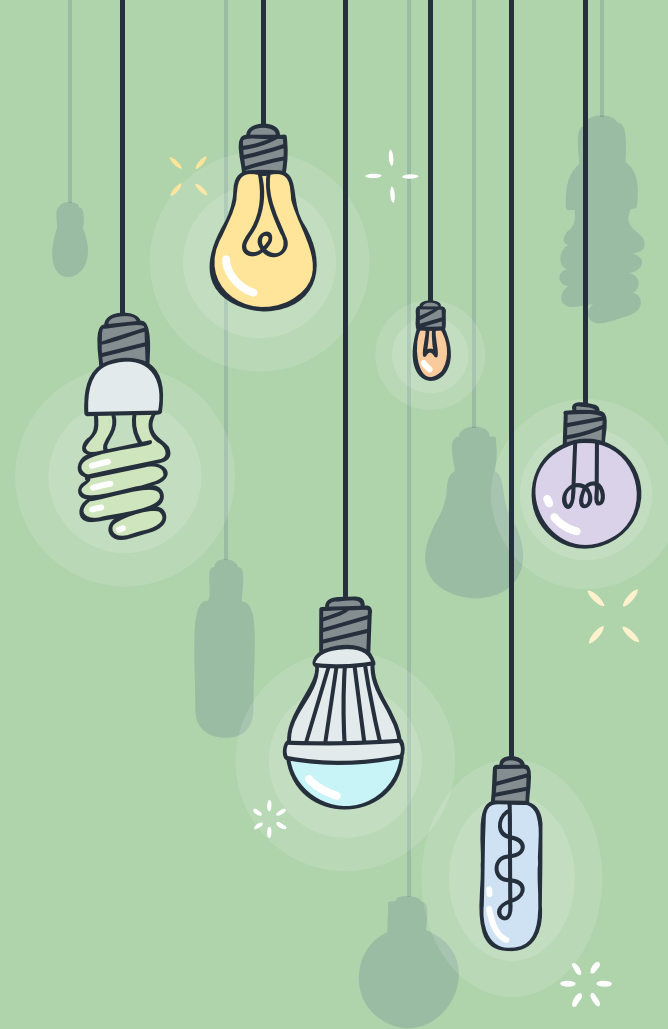


* HOW YOU CAN HELP

- + Leading, or shadowing, a committee
- + Financial assistance
- + Lending your expertise on projects, presentations, or events
- + VOLUNTEERING at fundraisers, clean ups, with your child's class or grade level.
- + Attend meetings
- + Support to the PTA can come in many shapes, forms, sizes and we welcome it all!

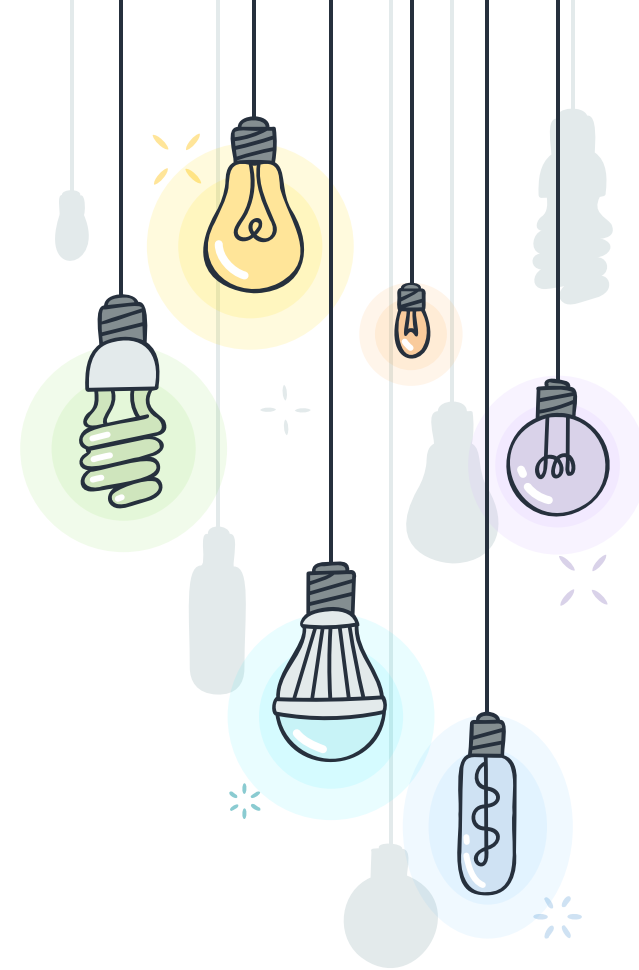


PTA DOINGS



* THE PTA SUPPORTS

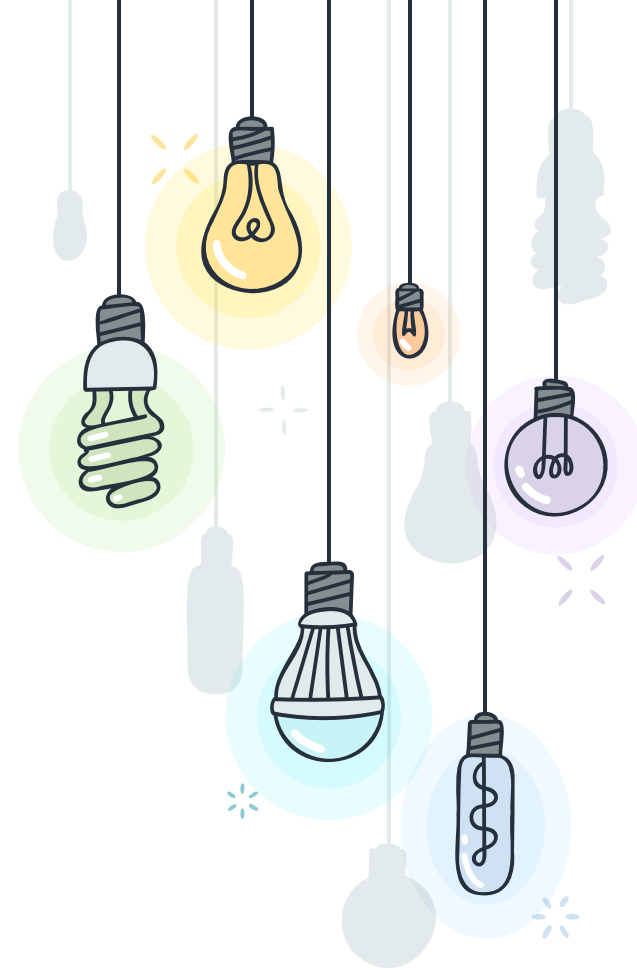
- + Teacher positions (music and PE)
- + The Morning Care Program
- + Designs and creates school t-shirts
- + Purchases tickets to HTY
- + Monetary support to teachers
- + Community building events
- + Supports after school enrichment classes
- + Japanese sister school exchange
- + 4th grade Big Island Trip
- + 5th grade graduation
- + Teacher appreciation
- + Room Parents
- + Supplies and equipment
- + Fundraisers



* TRUNK OR TREAT

- + Friday, October 27, 2023
- + Kids (and parents) 5:30p - 7:30p
- + Bentos, Shave Ice, and other fun activities.
- + Trunk or Treating 6:30p - 7:30p

We will be looking for “trunkers” and “treat” donations. Be on the lookout for information in early October.



* CRAFT FAIR - SATURDAY, NOVEMBER 11, 2023

Craft Fair is a tradition at Noelani which is enjoyed by the Manoa community and beyond. Event is timed to coincide with early Christmas shopping!

- + Vendor Booths
- + Community Booths
- + Food Trucks
- + Keiki Games
- + Alumni Booth

**THIS IS OUR BIGGEST EVENT OF
THE YEAR!**

We need YOU to make this a successful event.

Be on the lookout for volunteer information.

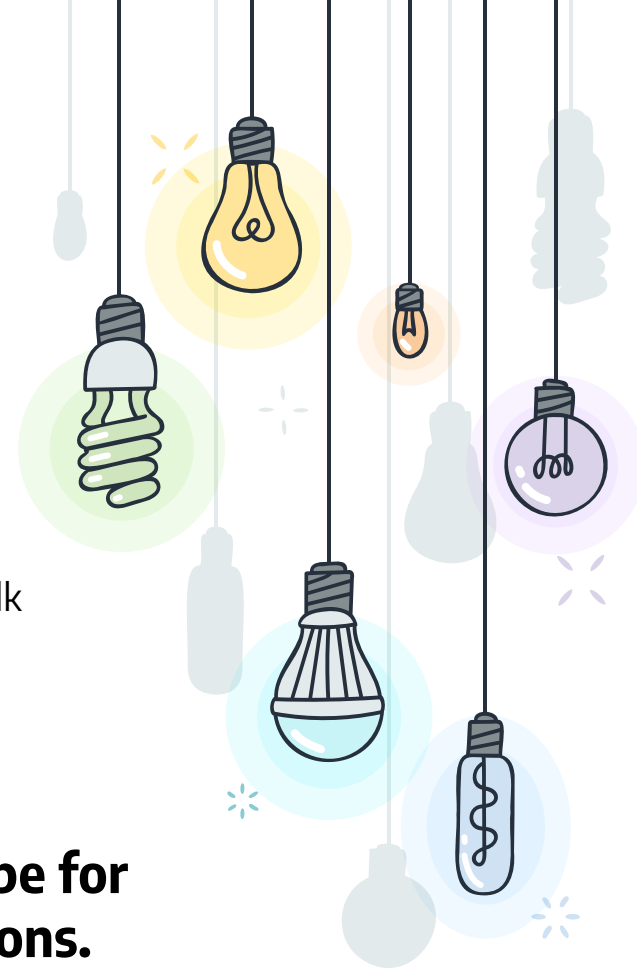


* JOGATHON - FRIDAY, FEBRUARY 9, 2024

Students are sponsored by family and friends to jog or walk along a course that winds through the Noelani campus.

- **Helps students appreciate the importance of an active and healthy lifestyle while supporting our physical education program.**
- Nets over \$25K / year in revenue.
- Upper grade levels (3-5) cheer on lower grade levels (K-2) while they run/walk and vice versa.
- All children receive Jogathon t-shirts.

Jogathon is a pledge based event (think jump rope for heart), so we need your help to bring in donations.

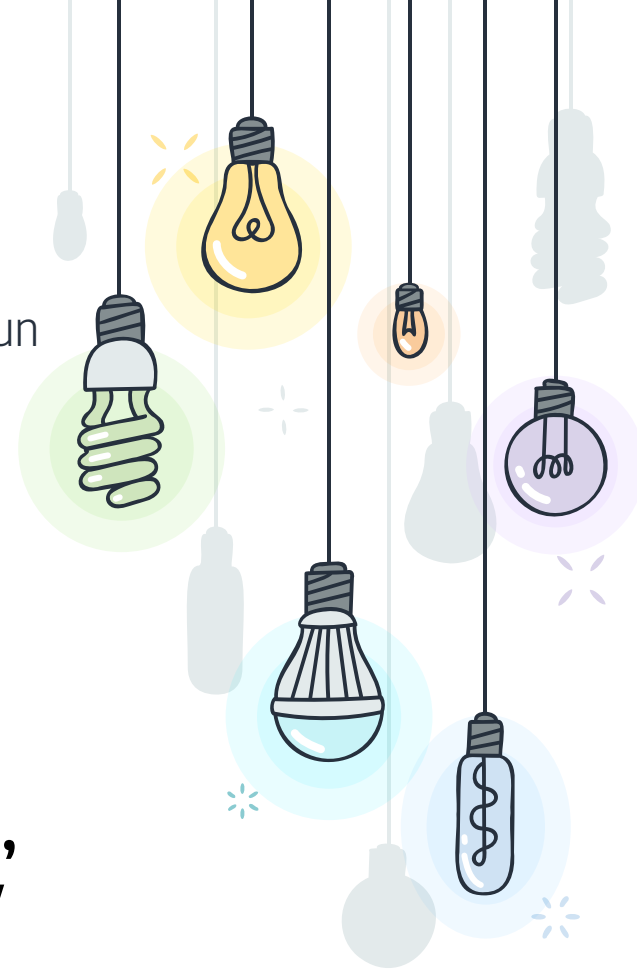


* MAY FAIR - FRIDAY, MAY 3, 2024

A combination of a traditional May Day Program along with a fun fair open to Noelani families!

- + Beautiful grade level performances
- + Silent auction
- + Carnival atmosphere with games and activities
- + Nets on average around \$25K

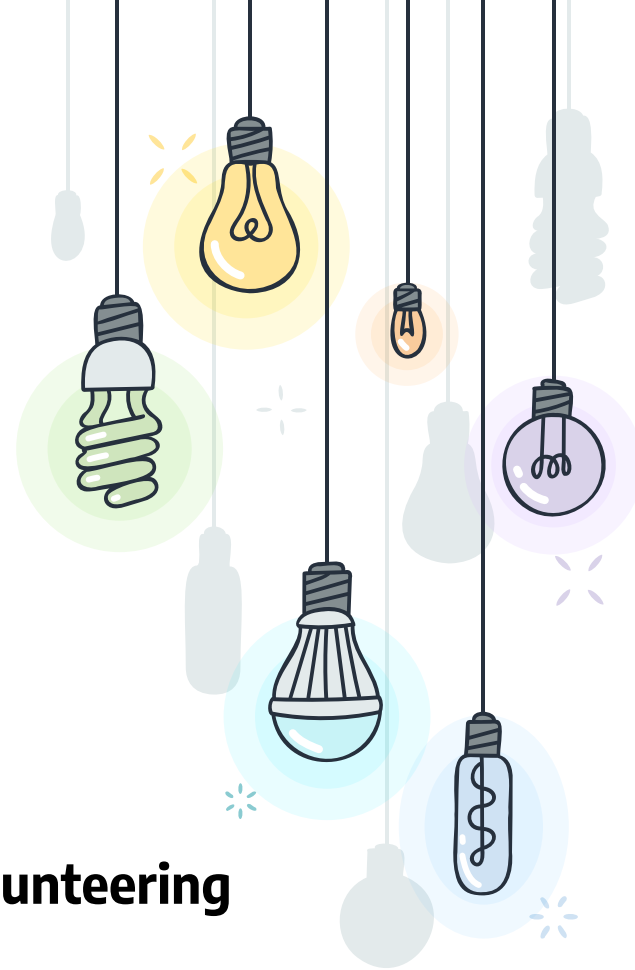
We need your help to run the games, silent auction, prize booth, and other activities that make this day super fun for the kiddos.



* STAFF APPRECIATION WEEK - MAY 6 - 10, 2024

- + Show our appreciation for the hard work teachers and staff put in for our kiddos.
- + We feel a day is not enough, so instead we do a weeks worth of activities.
- + Meals, gifts, recess supervision...there is not enough we can do.

Show your support for our teachers and staff by volunteering or through acts of appreciation.



* MONTHLY MEETINGS

Who: Open to everyone

When: 2nd Thursday of every month (next meeting 8/10)

Time: 6:00 p.m. – about one hour long

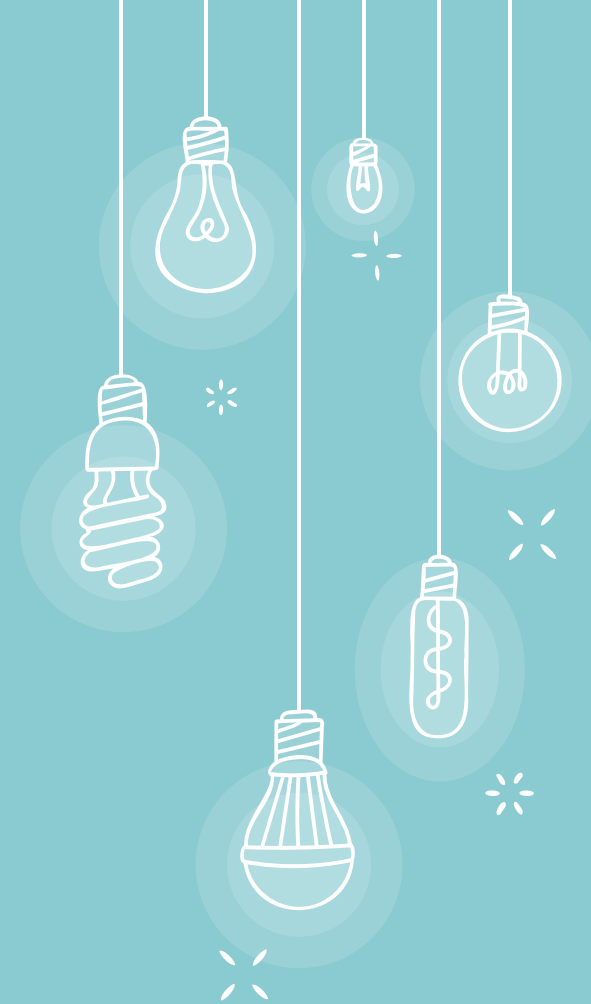
Place: Online via Zoom

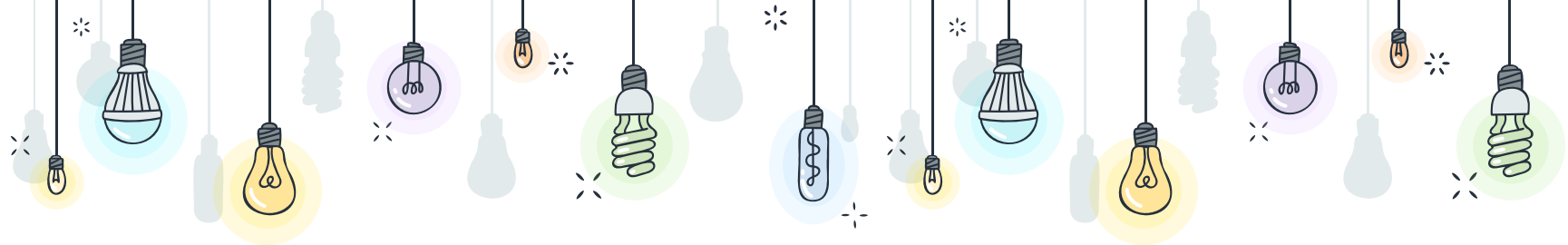
Our success depends on everyone's involvement. Please attend the monthly meetings.





Visit our website at
www.noelanipta.org





**THANK
YOU**



NOELANI ELEMENTARY SCHOOL



FACULTY & STAFF



* KINDERGARTEN



Ms. Chang - B2



Ms. Giesseman - PO1



Ms. Kuba - B4



Ms. Neely - B3



* GRADE 1



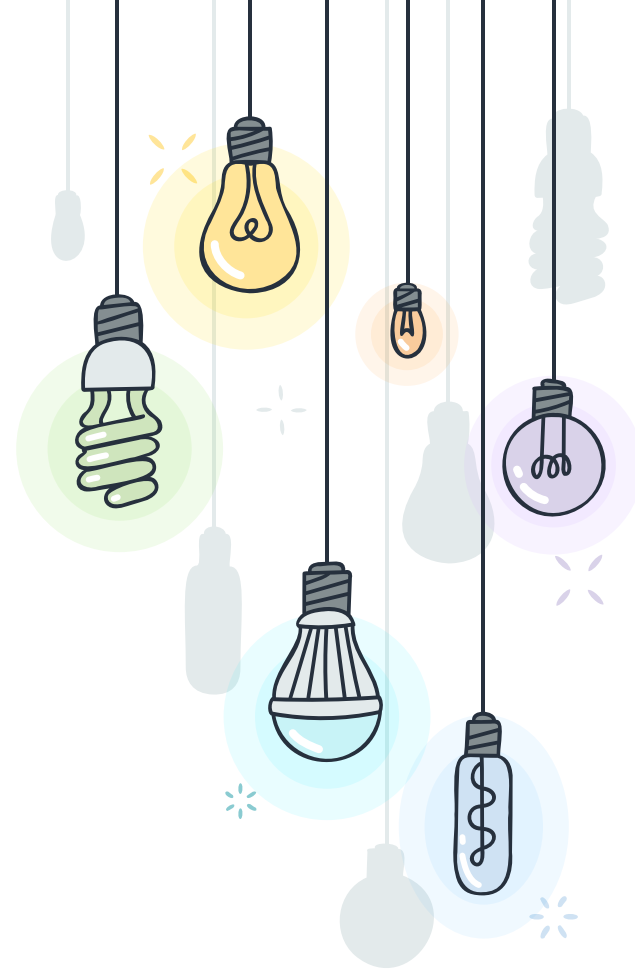
Ms. Nakamura - B1



Ms. Matsui - B5



Ms. Quay - P03



* GRADE 2



Ms. Shigaki - B6



Ms. Yoshimoto - B7



Ms. Nakagawara - PO3



* GRADE 3



Ms. Barilla - A2



Mr. Nakayama - A3



Ms. Kuroda - A4



* GRADE 4



Ms. Ho - A5



Mr. Fukushima - A6



Ms. Gonsalves - A12



✧ GRADE 5



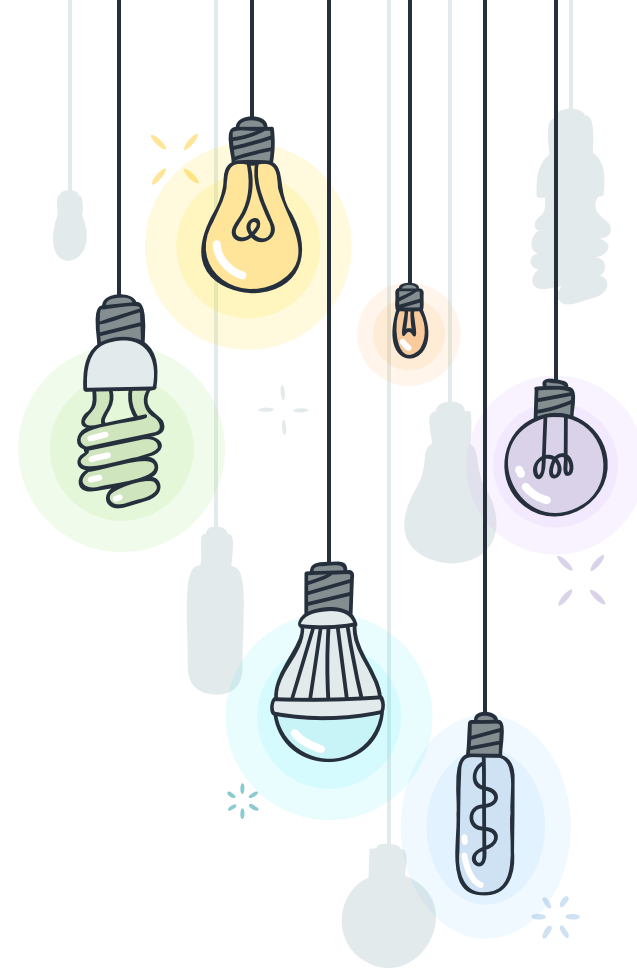
Mr. Sakamoto - A7



Ms. Chang - A8



Mr. Higa - A9



✨ KOKUA



Ms. Crawford - PO2



Ms. Nacion - A1



Ms. McCurdy - A10





* EDUCATIONAL ASSISTANTS



Ms. LaPierre



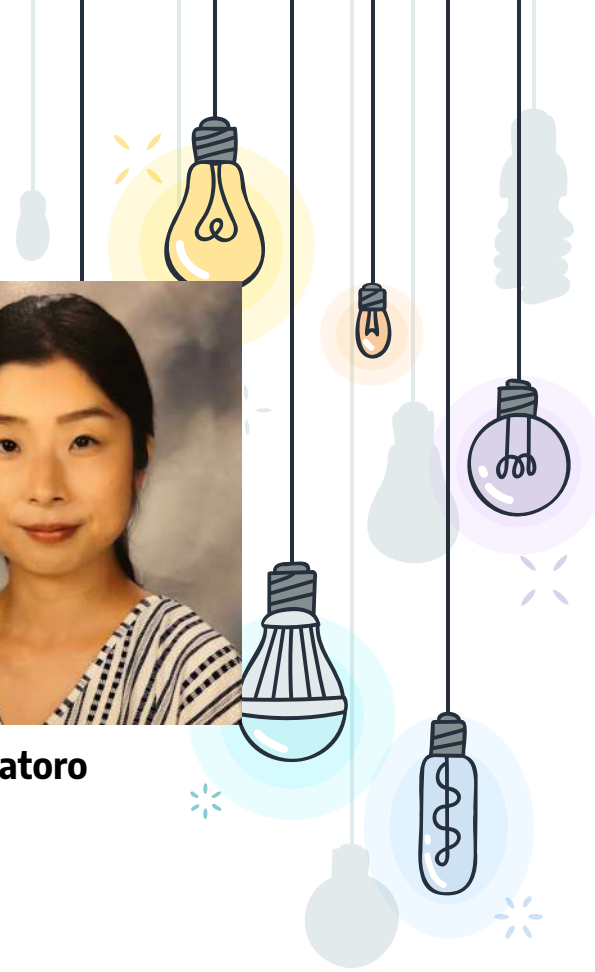
Ms. Chung



Ms. Ogimoto



Ms. Vilatoro



* SPECIALS



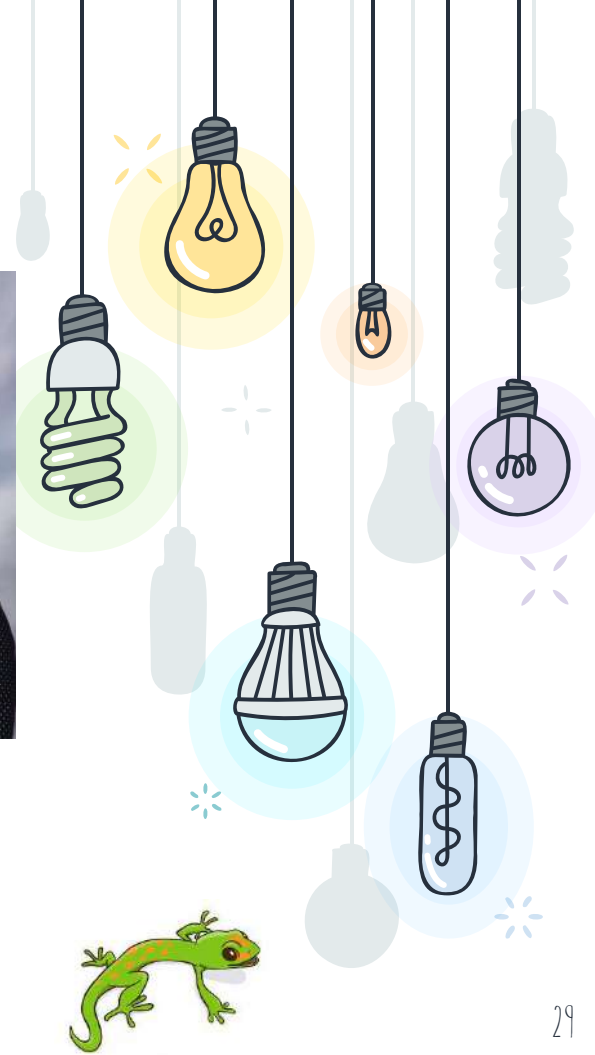
Ms. Graham
Library



Mr. Lam
STEM



Mr. Kiyokane
**GT/Computer
Science**



✧ NCTs



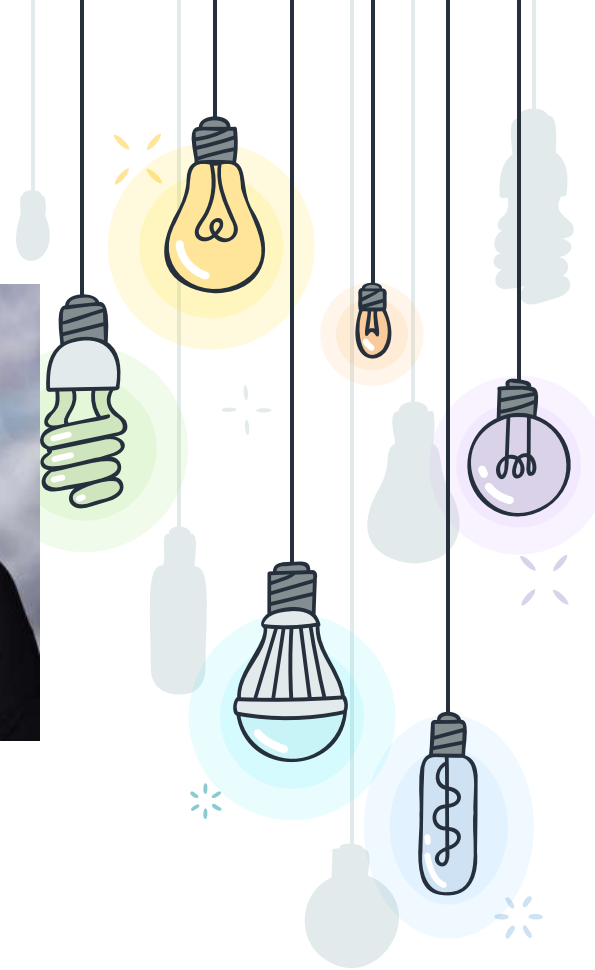
Ms. Murakami
EL



Ms. Okuda
SSC



Ms. Yamane
Counselor



* SPECIALS CONT.



Makua Crabbe
Hawaiiana



Mr. Benjamin
Music



Ms. Lum
PE



✧ OFFICE



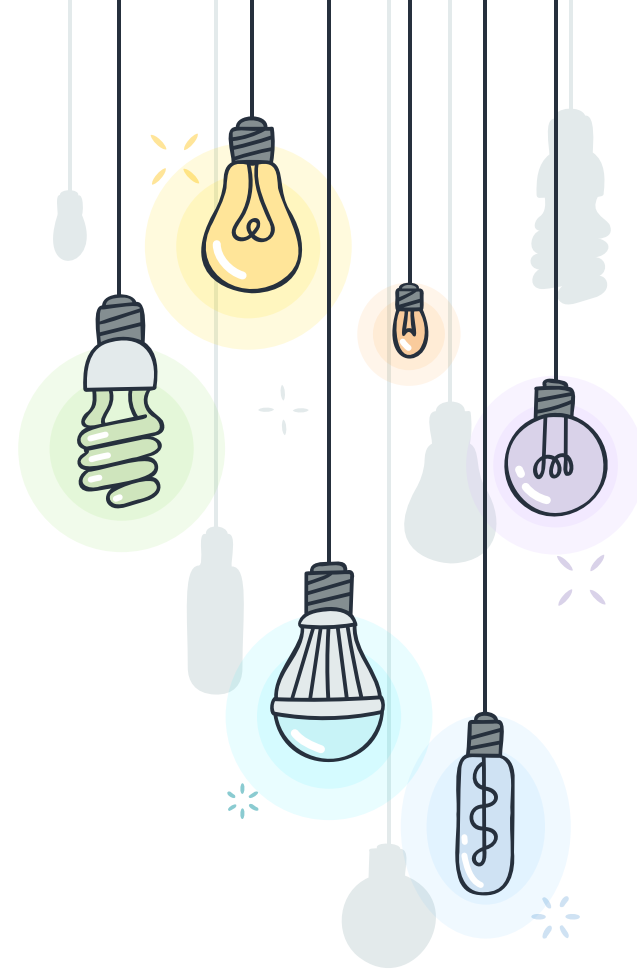
**Ms. Ishii
SASA**



**Ms. Nagamine
Office Assistant**



**Ms. Nakamoto
Health Aide**

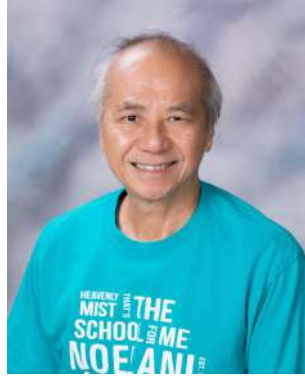




* CUSTODIANS



Mr. Whaley
Head Custodian



Mr. Tu



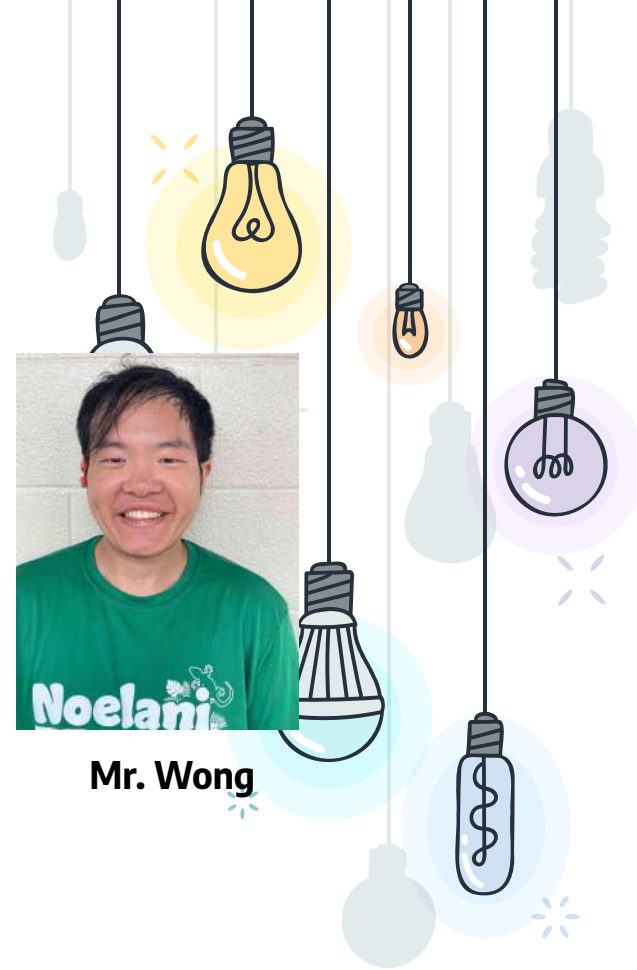
Mr. Ong



Ms. Anchetta



Mr. Wong



* CAFETERIA



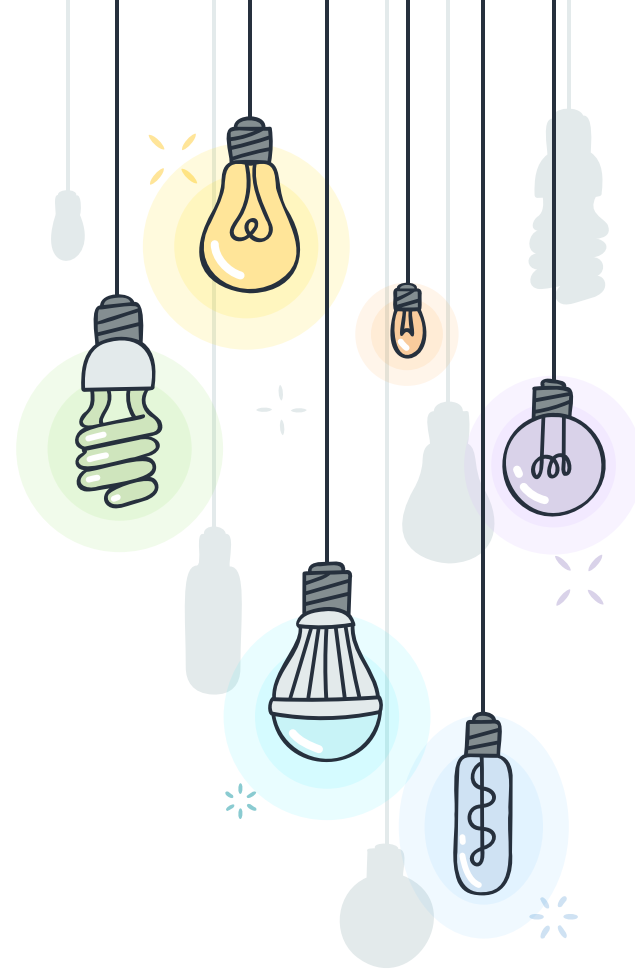
**Ms. Joy
SFSM**



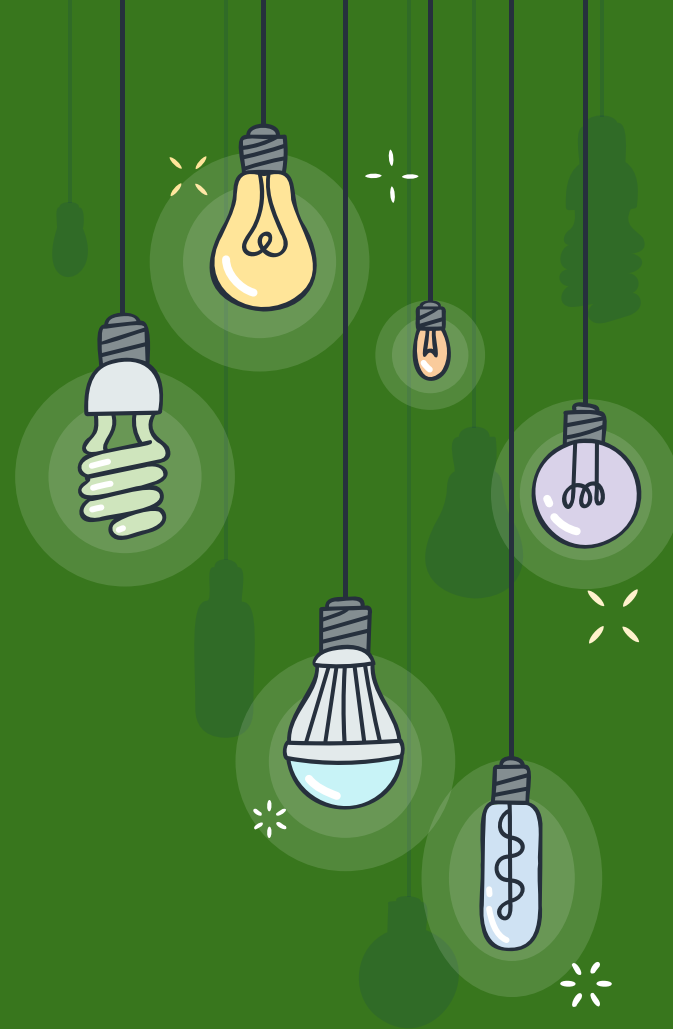
**Mr. Kwock
Cook**



**Mr. Nagasawa
Baker**

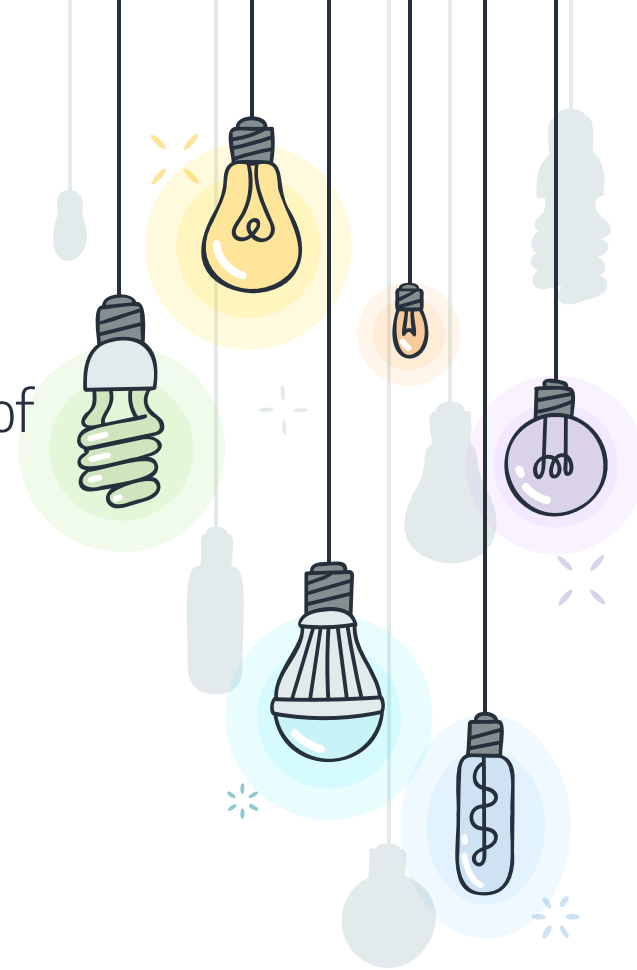


OUR GOALS



* WE STRIVE TO:

- + Partner with you in the development of your child.
- + Create a kind and nurturing environment in and out of the classroom.
- + Communicate with your family.
- + Listen to your compliments, ideas, and concerns.
- + Be better today than we were yesterday.

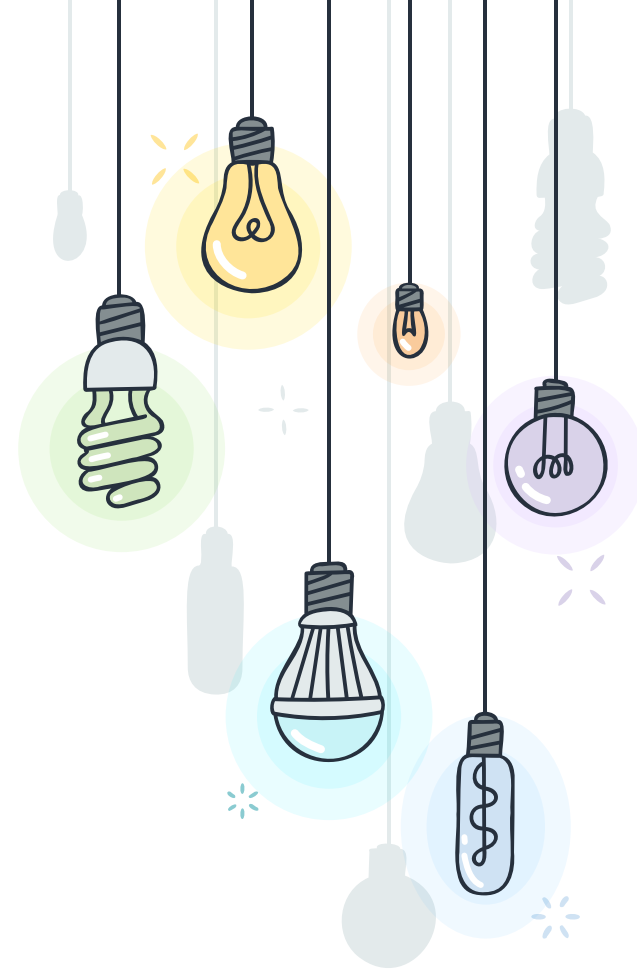


WHAT'S NEW?



WHAT'S NEW

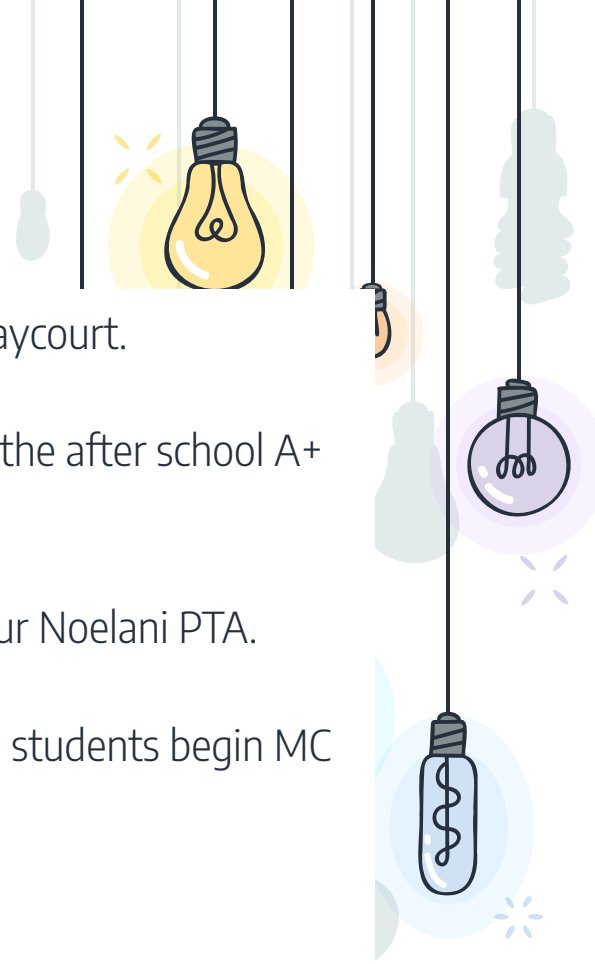
- ✦ Our phone number is now **(808) 307- 8800**
- ✦ We have PTA Sponsored Morning Care from 7:00a - 7:45a. See our website for details.
- ✦ The Attendance, Tardy, and Early Release online request will be up and running on our website - www.nes.k12.hi.us
- ✦ Notification blog



* MORNING CARE

- + For K-5 students who prefer movement in the morning rather than sitting in the cafeteria or breezeway.
- + You must register and pay the \$150/quarter fee.
- + Registration is online via the Noelani website.
- + First come, first served. We have 60 slots available.

- + Is located at the Playcourt.
- + Is SEPARATE from the after school A+ Program.
- + Is sponsored by your Noelani PTA.
- + Note: Kindergarten students begin MC on August 14, 2023

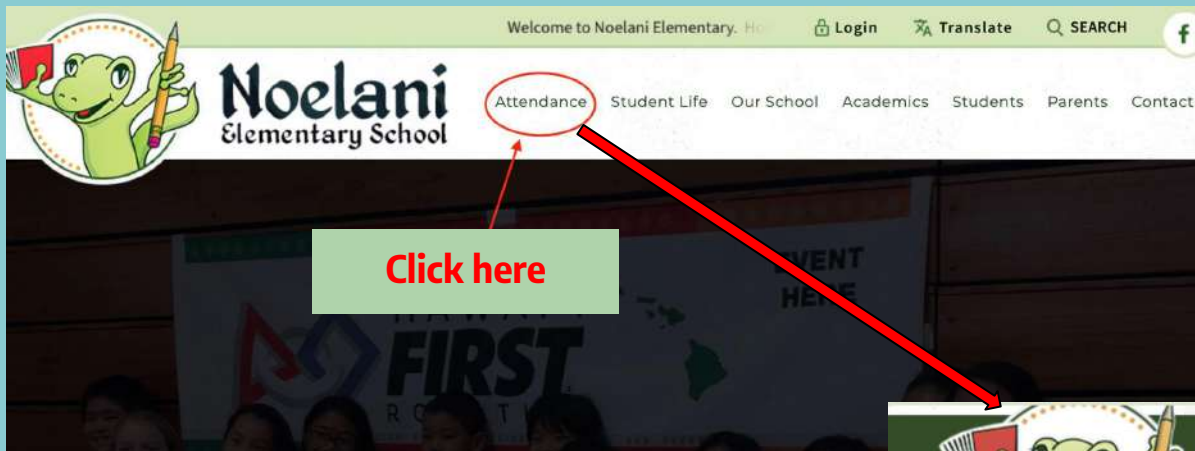


* COMMUNICATION BLOG



OR - Find the link on the home page (scroll down)





Click here

This is the preferred method of reporting students who are absent, tardy (due to appointment), or requesting an early release from school.

You can call (808) 307-8800 if needed.

Section 1 of 5

Noelani Elementary Attendance, Tardy, & Early Release Form

Parents and Guardian,

Please fill out the following information to provide Noelani Elementary School with your child's absence, tardy, or early release request.

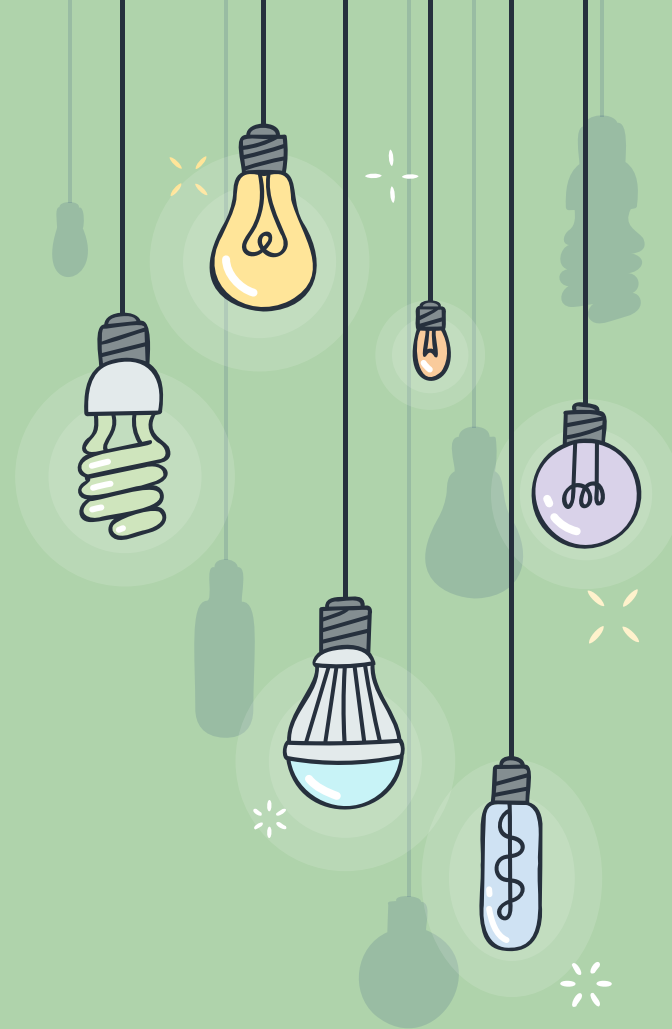
Information gathered will be kept confidential as part of the student record and will assist in recording the required information accurately.

Please fill out one form per student.

Please allow a minimum of 45 minutes *during office hours* for processing any request.

Email *

SPECIAL CLASSES



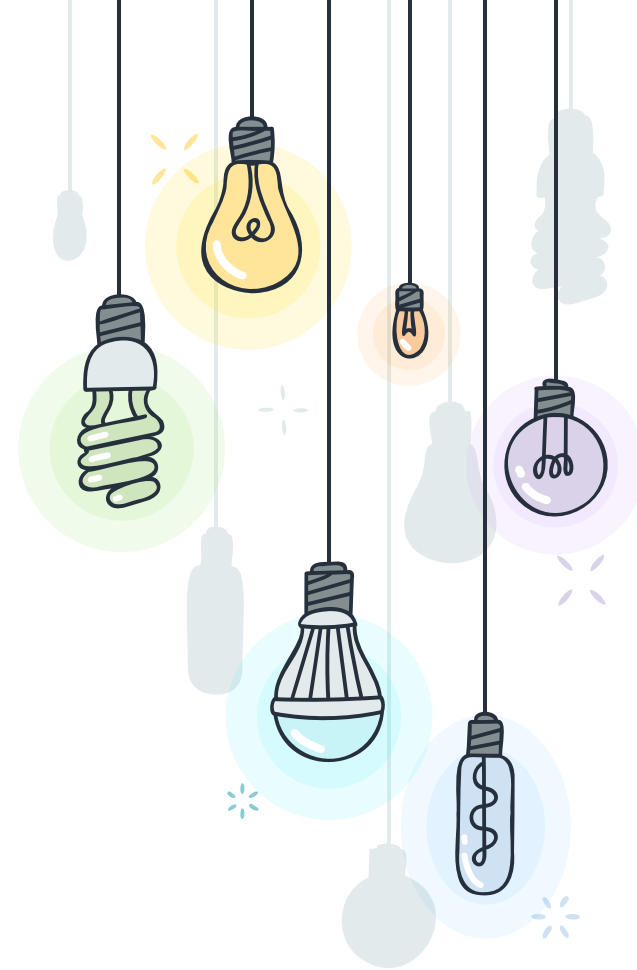
* SPECIALS

PTA Sponsored

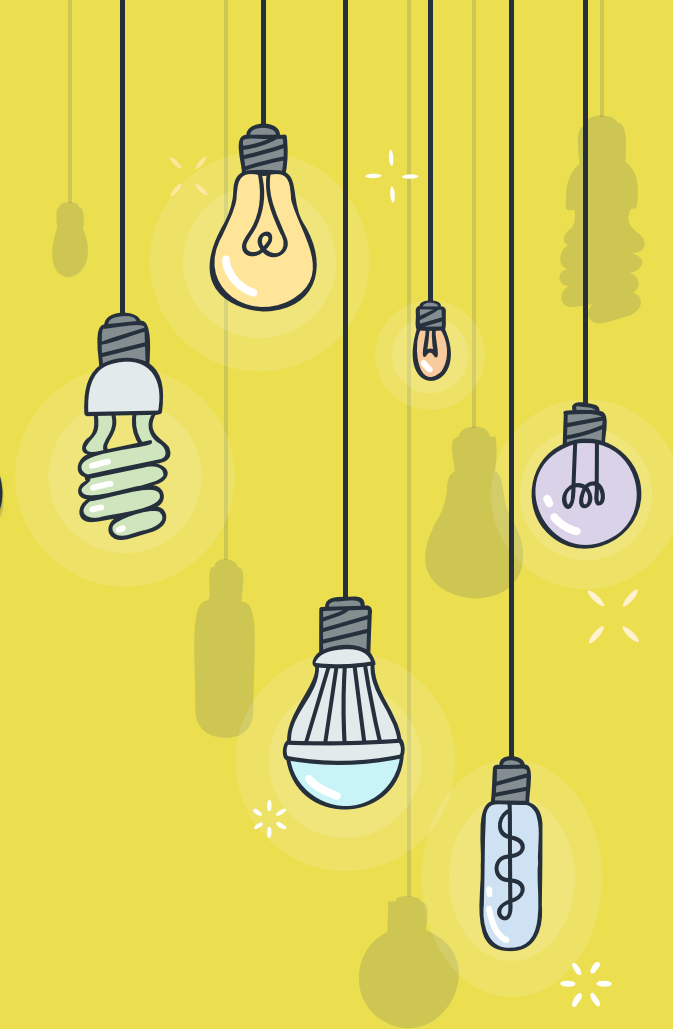
- ✗ Music
- ✗ PE

School Sponsored

- ✗ Hawaiiiana
- ✗ Library
- ✗ STEM/Computer Science
- ✗ Social Emotional Learning

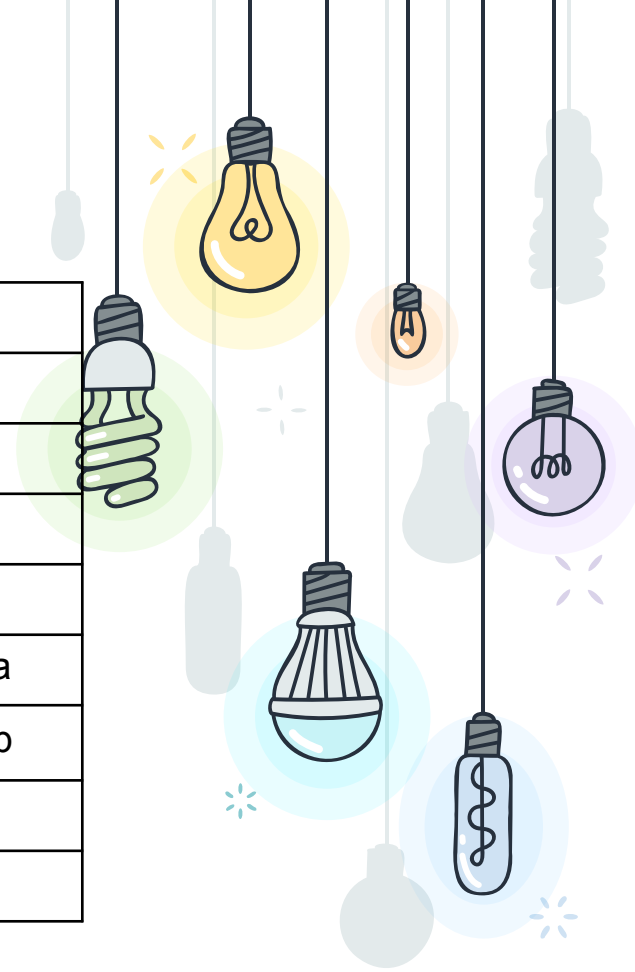


SCHOOL PROCEDURES

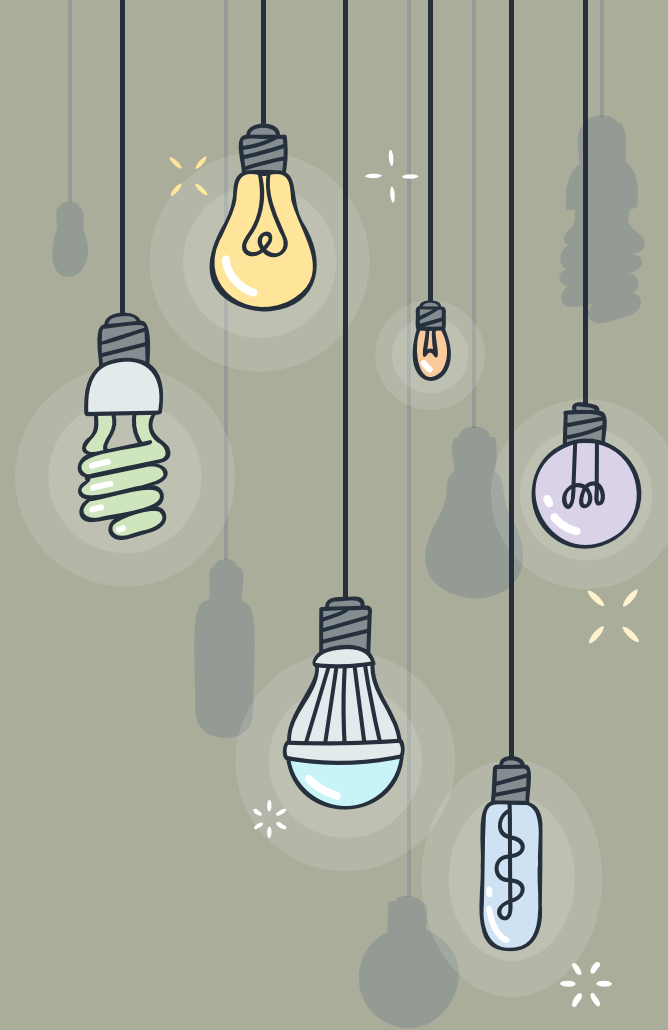


* BELL SCHEDULE

Campus Opens/Morning Care	7:00 AM	
Earliest Time to go to class	7:45 AM	
Start of School	8:00 AM	
Tardy Bell	8:05 AM	
Morning Recess	9:45 AM - 10:00 AM	
Lunch & Recess	Grades PK - 2	11:00a - 11:45a
	Grades 3 - 5	11:45a - 12:30p
End School - M,T,Th,F	2:15 PM	
End School - Wednesday	1:30 PM	



MORNINGS



MORNINGS

☀️ Daily School Schedule

8:00a - 2:15p (M, Tu, Th, F)

8:00a - 1:30p (W)

Campus opens at 7:00am

Look for the signs - Do not stand in front of classes until 7:45a

If tardy (after 8:05a); go to the office.

If absent, use our website or call (808) 307-8800

Office Hours: 7:30a - 4:00p



* MORNINGS CONT.

- There is no adult supervision before school other than at Morning Care.
- Students are not allowed to play on the school grounds or playground equipment (even w/parents).
- From 7:00 am students must wait in the cafeteria, breezeway near the A-building/multi-purpose building, or be registered at Morning Care until 7:45 am.
- Once a child is dropped off at school, they are are not allowed to leave campus without permission.



* DROP OFF

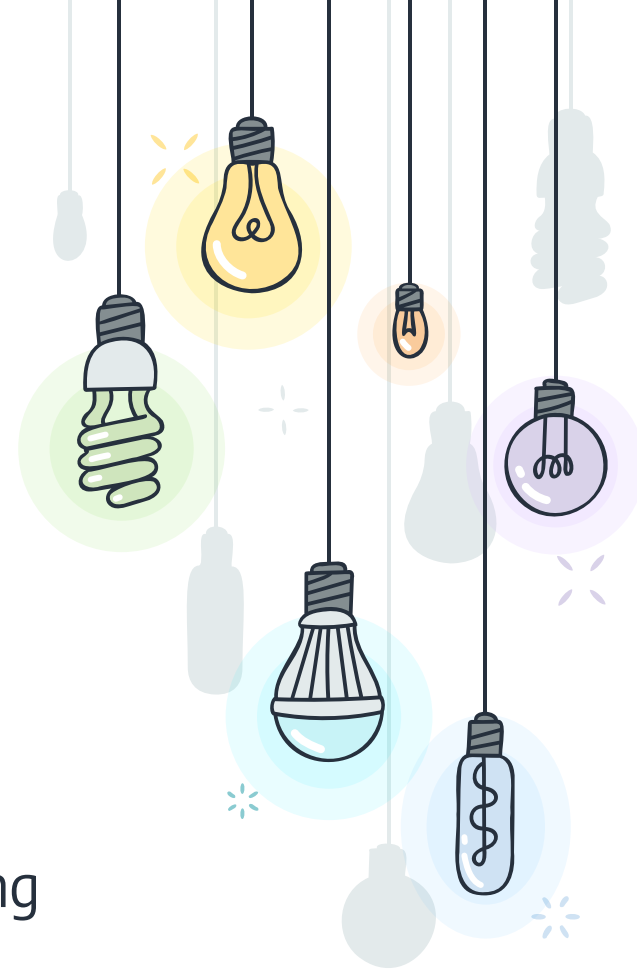
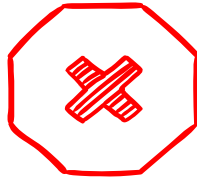
- ❑ The main parking lot is reserved for staff members.
- ❑ The back parking lot and field are available for parent parking.
- ❑ Observe the direction of the painted arrows and keep the traffic flow moving by pulling up in the lane to drop off.
- ❑ While in the drop off lane, have your child exit from the right side of car (curb).
- ❑ Exit at a safe speed



* DROP OFF CONT.

AVOID

- ❑ Parking by the dumpsters
- ❑ Parking in the faculty lot
- ❑ Parking in the drop off lane
- ❑ Allow your child to walk across the parking lot (even with you) - Cars have a difficult time seeing little ones.



* ATTENDANCE

- ✘ Attendance is MANDATORY per the compulsory attendance law.
- ✘ CHRONIC ABSENTEEISM is defined 15 or more days absent from school for ANY reason. (missing 2 days a month = an entire month of school)
- ✘ Avoid scheduling trips, and other similar activities, during school time.
- ✘ If attendance becomes an issue, you will receive written notice and/or phone calls to conference.



* TRAFFIC ADVISORY - SCHOOL START DATES

SCHOOL	START DATE
Mid Pacific	August 14/15
Maryknoll	August 9
Punahou	August 16
UH Mānoa	August 21
Stanford v. UH	Friday, Sept 1 *

HEALTH & SAFETY

- ✘ Keep your child home if they are sick.
- ✘ Upon returning from illness or injury, see our Health Aide for a readmit slip BEFORE going to class.
- ✘ Noelani does not administer OTC medication (ie. Tylenol, antacids, etc.)
- ✘ For prescribed medication, you must complete paperwork and submit to our SHA.
- ✘ Questions can be directed to our SHA Mira Nakamoto
 - Healthaide@nes.k12.hi.us or call (808) 307-8800



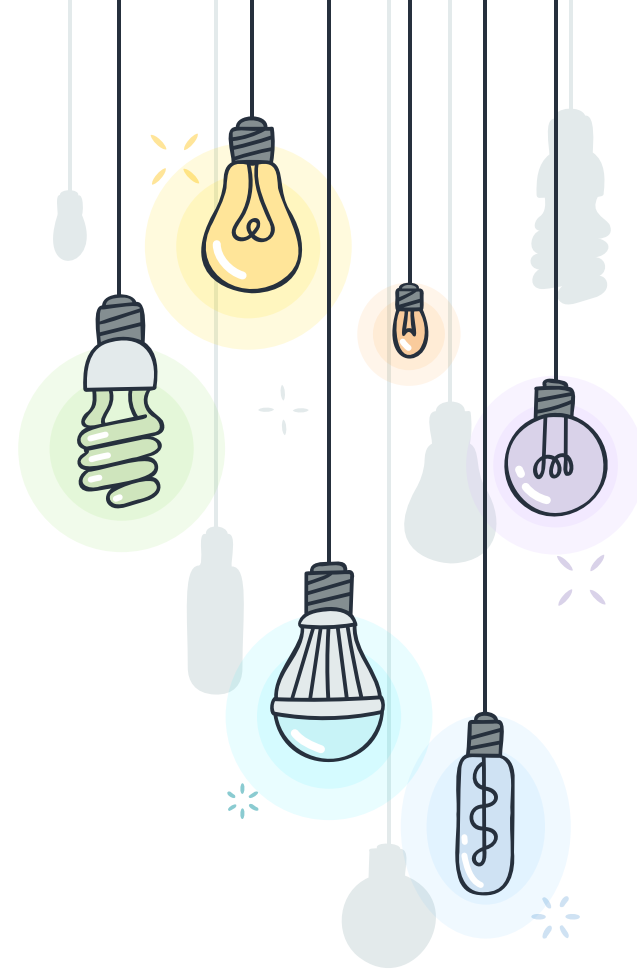
HEALTH & SAFETY



* HEALTH GUIDANCE 23-24

- + Stay up to date with all vaccinations
- + Stay home when sick
- + Test as soon as possible
- + Optimize ventilation
- + Teach, reinforce, and practice proper handwashing
- + Cover coughs and sneezes
- + Mask if you feel it is necessary to do so

See the health aide if you have any questions



* KEEP YOUR INFORMATION UPDATED

- + Changes to email, phone, or home address should be done in a timely manner.
- + Keep us up to date with student medical issues
- + It would be nice if you provide us copies of any legal matters such as custody, tro's, and the like.



✧ VISITOR PROCEDURES

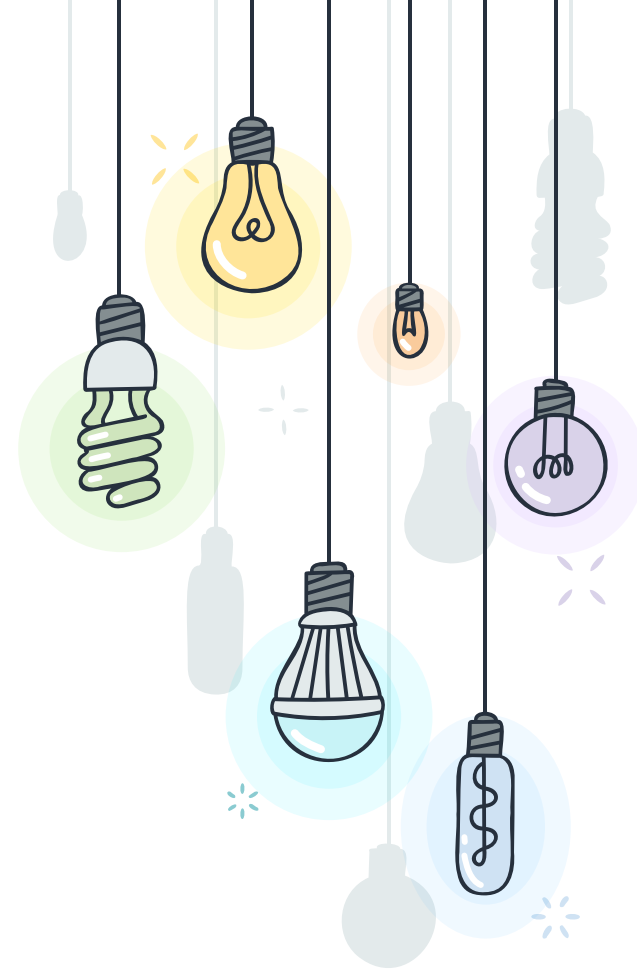
- ★ All visitors must sign in at the office.
- ★ A visitor's badge will be issued.
- ★ During school hours, parents are not allowed in the classrooms to discuss any concerns. Please make an appointment or leave message.
- ★ Students are not allowed to bring friends or relatives to visit the classroom.



* CAMPUS / PLAYGROUNDS

The Noelani campus is off-limits to students, parents, and visitors before/after hours, weekends, and holidays.

This includes **fields** and **playgrounds**.

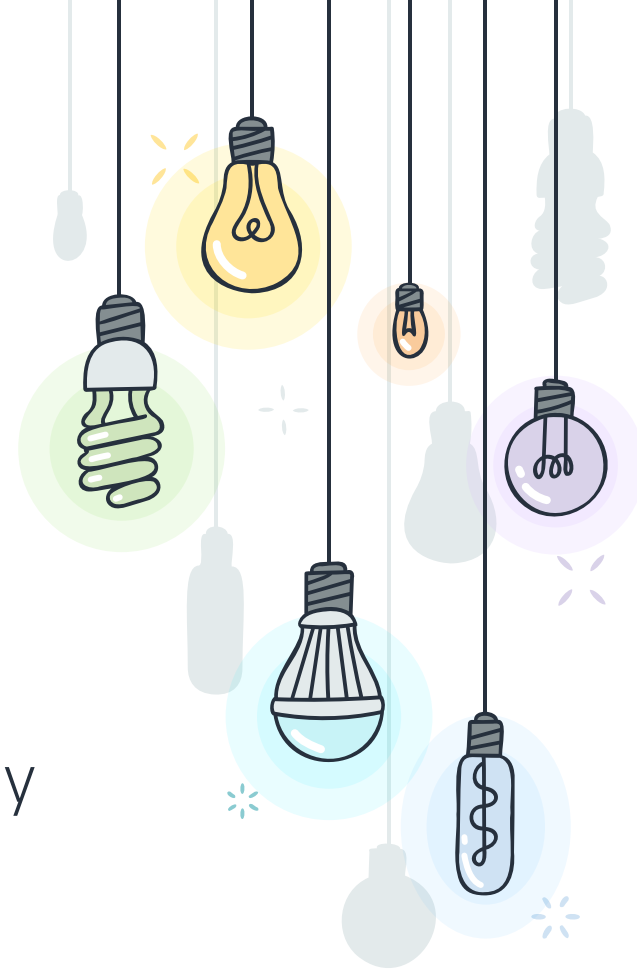


AFTER SCHOOL



❖ AFTER SCHOOL

- ❖ Parents/Guardians can wait near the office until the bell rings.
- ❖ Please do not stand in front, or enter, classrooms until students are dismissed.
- ❖ If you need your child right at the end of school, make prior arrangements for an early dismissal.



* PROGRAMS

- ✘ After School Programs
 - A+
 - @ Noelani until 5:30p
 - If you have Free/Reduced meals you can qualify for a lower cost
 - Japanese School
 - Manoa Valley Church

- ✘ If students are not enrolled in A+ or an after school program, parents should pick up their child within a reasonable time after school.

- ✘ In the event a child has an after school class or tutoring, please arrange for prompt pick up.



✨ PICK UP

- ❑ Pre-arrange with your child where you will be.
- ❑ If your child is not on the curb you may be asked to loop around or park to keep the flow of traffic.
- ❑ Let the adults working the pick up line know who you are picking up. A sign with your child's name on the dash is very helpful.
- ❑ Students are not allowed to wait in the Main Office. The best place to wait is in front of the cafeteria.



MEAL SERVICE



* MEAL PRICES

STUDENT MEALS

Regular Prices

Breakfast: \$1.10

Lunch: \$2.50

Reduced Meal Prices

Breakfast: \$0.30

Lunch: \$0.40

See the office for information to see if your child qualifies for reduced, or free, meals.

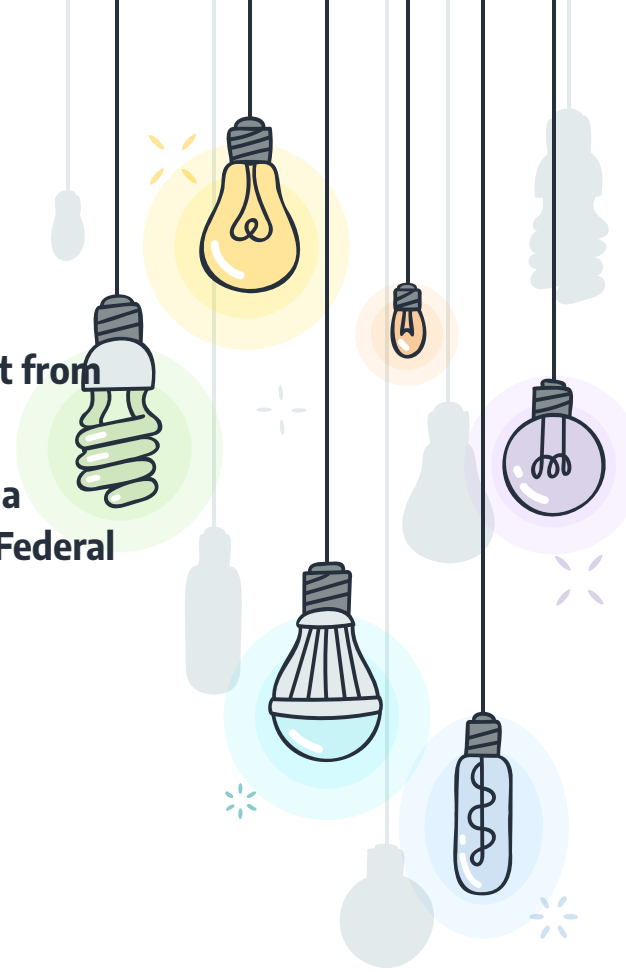
ADULT MEALS

You will need to purchase a ticket from the Main Office.

Adults are not allowed to eat off a student plate. This is set by the Federal Government.

Breakfast: \$2.40

Lunch: \$5.50



Reduced Meals

- All children in households receiving benefits from SNAP or TANF
- Foster children who are under the legal responsibility of a foster care agency
- Children who meet the definition of homeless, runaway, or migrant
- Those who fall at or below the Federal Income Eligibility Guidelines

Household size	Yearly	Monthly	Weekly		Household size	Yearly	Monthly	Weekly
1	\$31,025	\$2,586	\$597		5	\$74,759	\$6,230	\$1,438
2	\$41,958	\$3,497	\$807		6	\$85,692	\$7,141	\$1,648
3	\$52,892	\$4,408	\$1,018		7	\$96,626	\$8,053	\$1,859
4	\$63,825	\$5,319	\$1,228		8	\$107,559	\$8,964	\$2,069

**You must apply for F/R meals each year.
Go to ezmealapp.com - to apply**

Free Meals

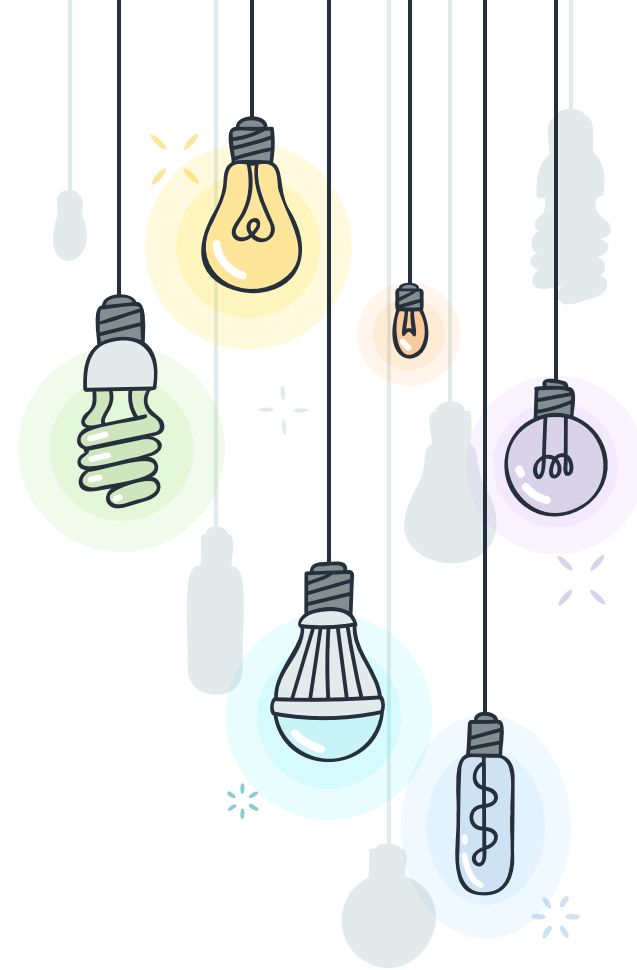
- All children in households receiving benefits from SNAP or TANF
- Foster children who are under the legal responsibility of a foster care agency
- Children who meet the definition of homeless, runaway, or migrant
- Those who fall at or below the Federal Income Eligibility Guidelines

Household size	Yearly	Monthly	Weekly	Household size	Yearly	Monthly	Weekly
1	\$21,801	\$1,817	\$420	5	\$52,533	\$4,378	\$1,011
2	\$29,484	\$2,457	\$567	6	\$60,216	\$5,018	\$1,158
3	\$37,167	\$3,098	\$715	7	\$67,899	\$5,659	\$1,306
4	\$44,850	\$3,738	\$863	8	\$75,582	\$6,299	\$1,454

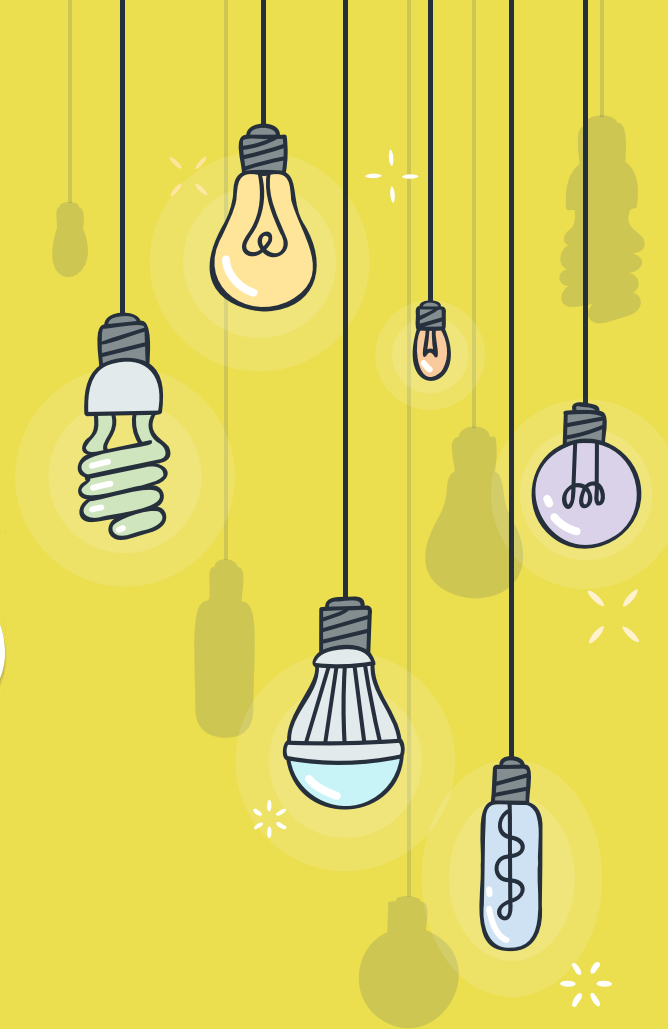
You must apply for F/R meals each year.
Go to ezmealapp.com - to apply

✧ MEAL PAYMENTS

- ★ Cash
- ★ Check/Money Order
 - Payable to “Noelani Elementary School”
- ★ EZSchoolPay.com
 - Credit Card Payments
 - Fee of 1.99% + \$0.13
 - Check balances or set up recurring payments



SCHOOL RULES & REMINDERS



* SCHOOL RULE REMINDERS

- + **Toys, electronics, and other play items** are not allowed in school. We are not responsible for lost/stolen/damaged items.
- + **Cell phones** for emergency use should be kept in your child's bag and not used during the school day.
- + Traverse the campus in a safe manner. Students are not to **run** on the sidewalks.

- + We strive for a **Kind Campus**, so please emphasize the foundations of our CHOOSE LOVE program: Courage, Gratitude, Forgiveness, and Compassion.
- + Bullying or harassment of any kind are not tolerated. Remind your child to seek help from an adult as soon as possible to report the issue.



* REMINDERS

- + **Privacy** is important - keep in mind the background when taking photos or video
- + **Bicycles** are to be walked on campus and parked in the rack located in the parking lot near the message board.

- + **Lost and Found** is located in the back corner of the cafeteria.
- + It is highly recommended students wear **shoes** to PE and recess.
- + We are a **nut aware** school. Refrain from bringing snacks and home lunch that contain nuts.



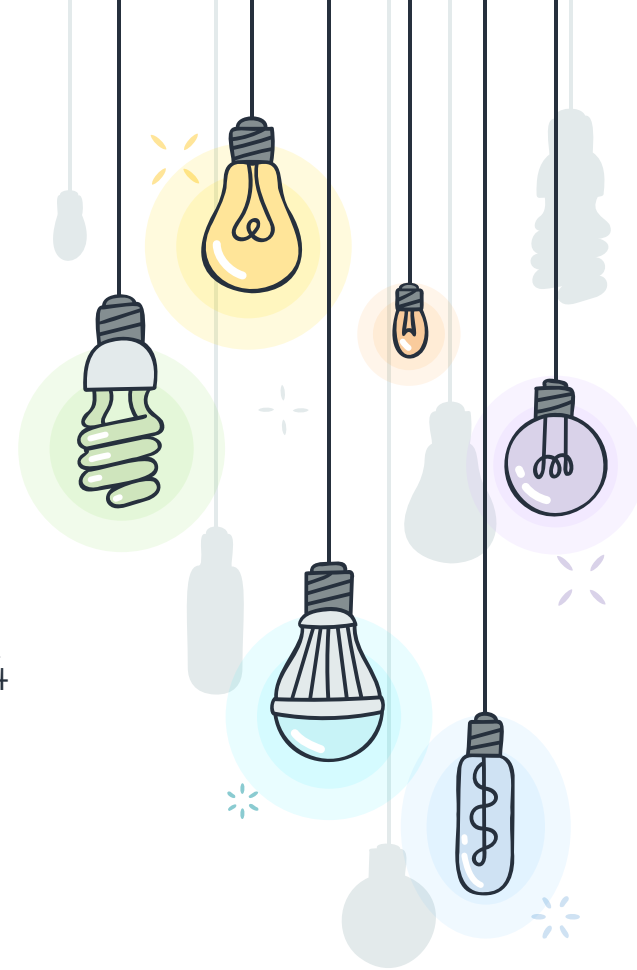
SCHOOL DAYS HEADS UP



* NON-SCHOOL DAYS

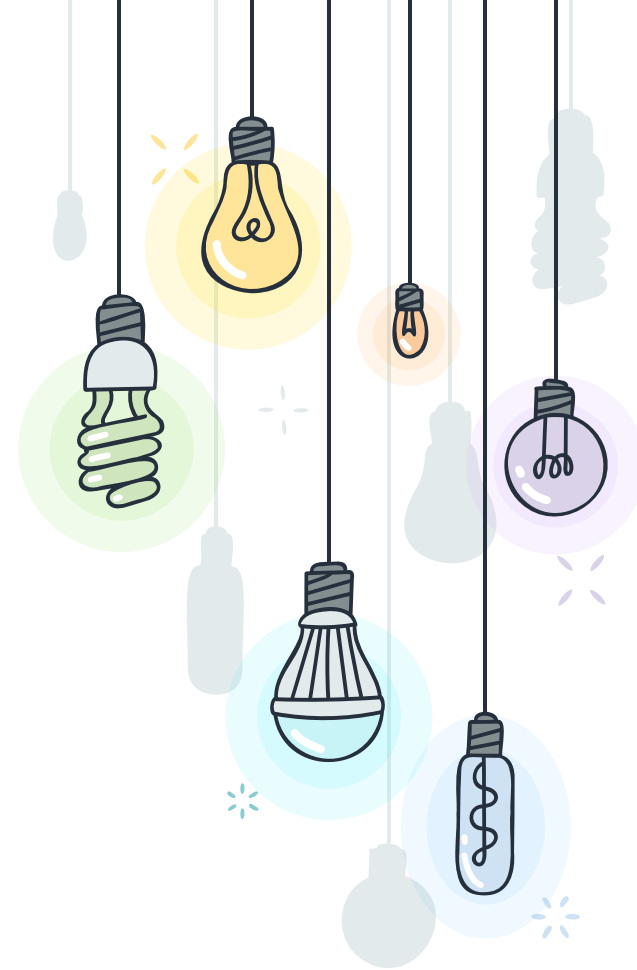
- + Typical federal holidays and breaks
 - × Friday after Thanksgiving is also included
 - × Hawaii public schools do not recognize Discover's Day as a holiday.
- + Hawaii holidays
 - × Admissions day 8/18/23
 - × Kuhio day 3/26/24

- + School Professional Collaboration Days
 - × 8/28/23
 - × 4/12/24
- + Teacher Institute Day
 - × Week of Feb 12, 2024



* PARENT - TEACHER CONFERENCES

- + October 30 - November 9
- + All days are modified to end at 1:30p (Wednesday schedule)
- + Afternoons are for conferences
- + A+ will be available from 1:30p.

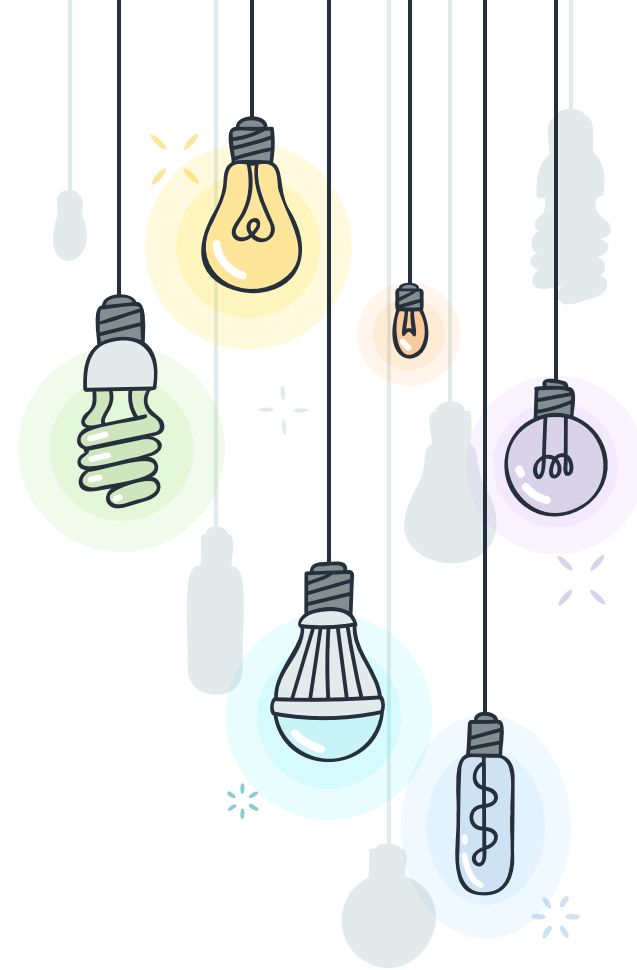


ROOM PARENTS



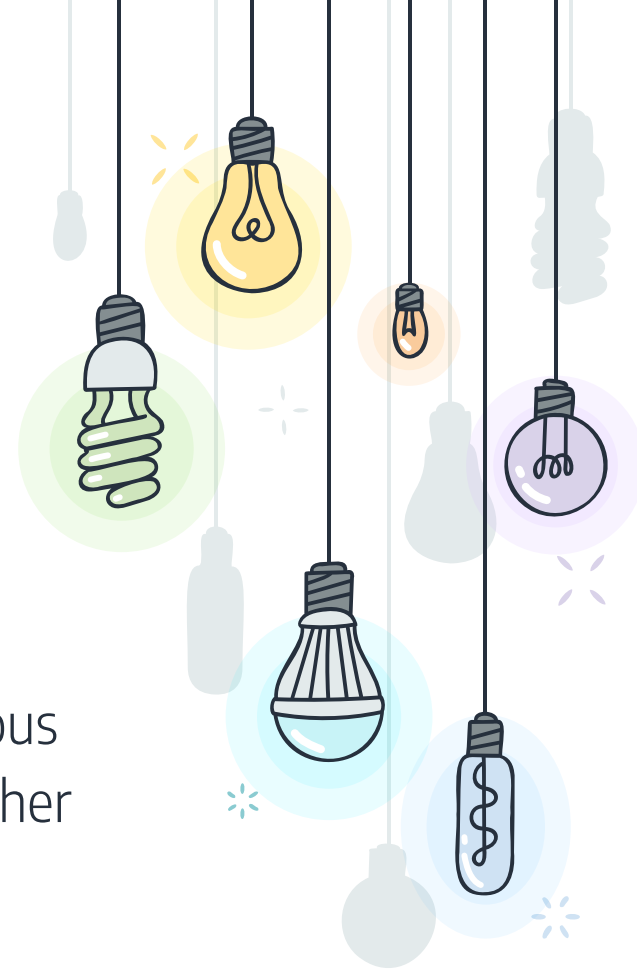
* ROLE OF THE ROOM PARENT

- + Assist the classroom teacher with non-instructional activities
- + Assist in communication between the parents and the classroom teacher and PTA



* RESPONSIBILITIES

- + Organize a classroom volunteer directory (typically phone or email)
- + Organize class parties/snacks/special activities
- + Organize May Fair Booth (secure volunteers & organize shifts) and
- + Assist with PTA recruitment of volunteers for various fundraising activities as directed by classroom teacher

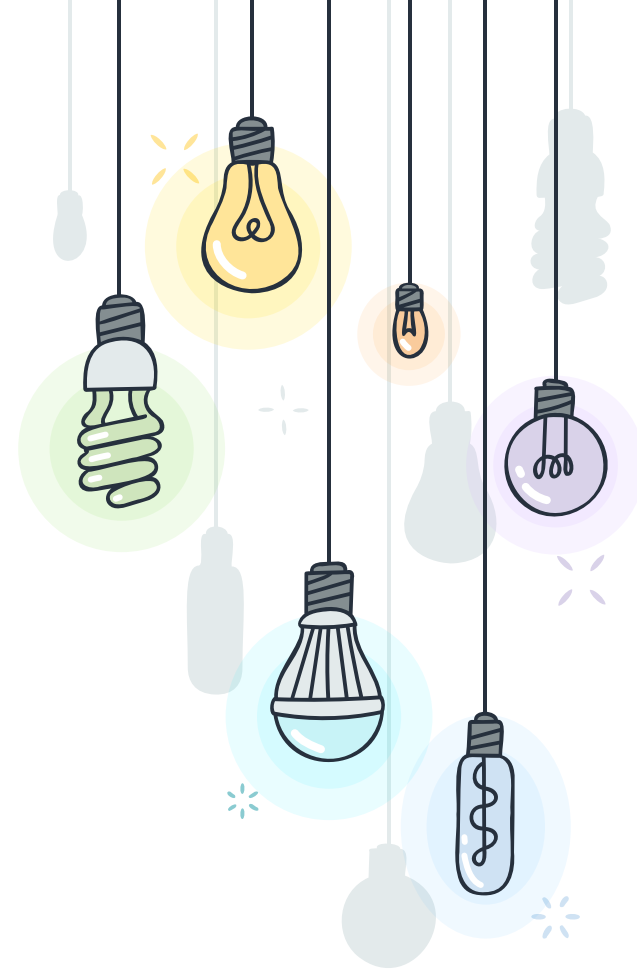


COMMUNICATION



* VISIT OUR WEBSITE FOR...

- + Monthly breakfast and lunch menus
- + School generated forms
- + Registration information for before/after school programs
- + The school calendar
- + Other important announcements



* PRINCIPAL COMMUNICATION

- + Typically by email, but sometimes by text
- + Reminders, heads up, celebrations, and emergency situations.
 - × Be sure your information is up to date
- + I also pass along information from groups such as the PTA.

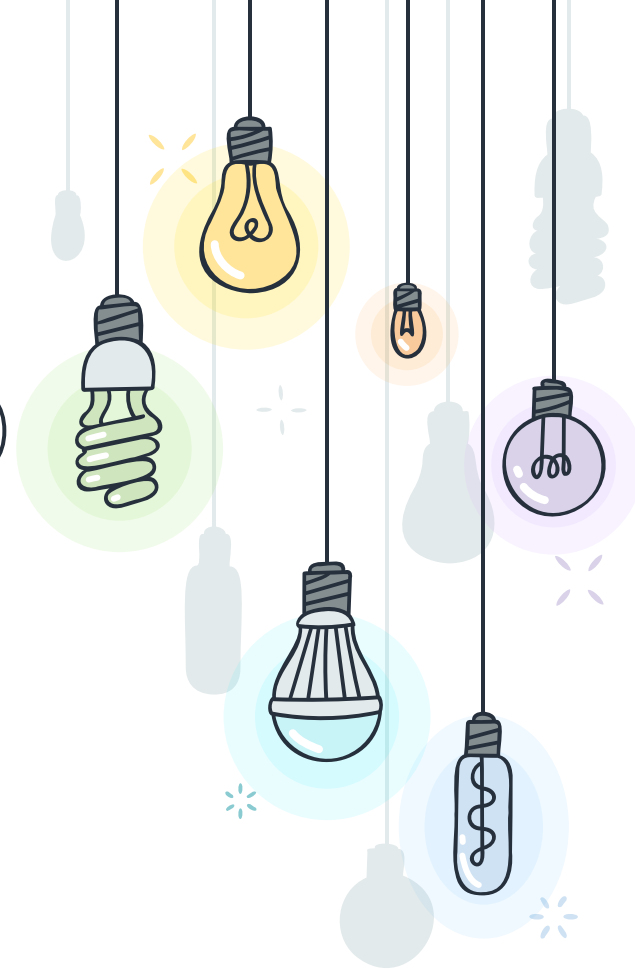


NOELANI DAY OF SERVICE



* FRIDAY, AUGUST 18, 2023

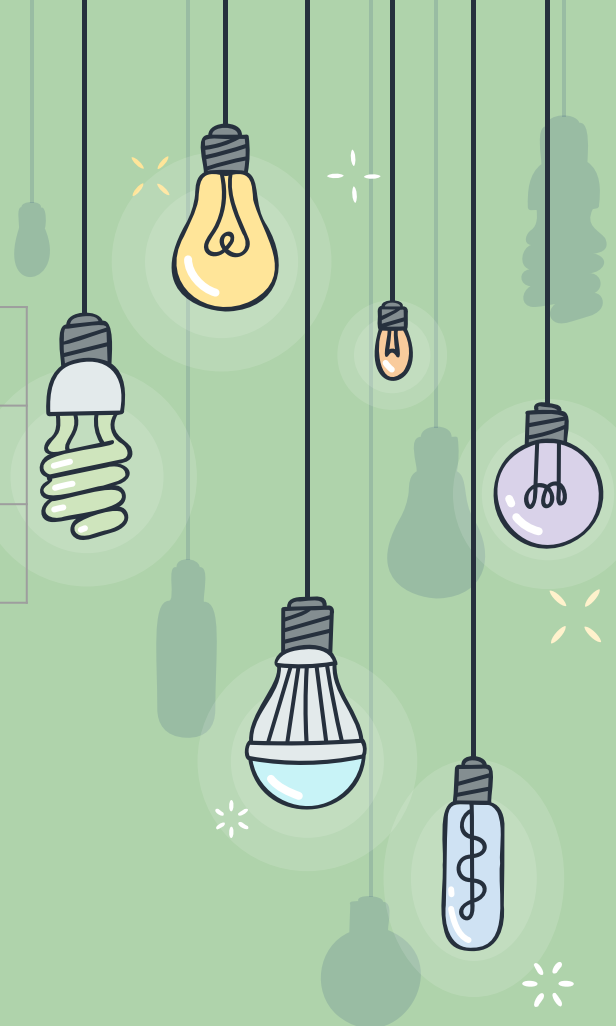
- + 8:00a - 10:00a
- + Weeding (bring tools and gloves if you can)
- + Planting (in anticipation of May Fair Haku)
- + General Campus Clean Up
- + Sign up through the Google Sheet sent via email.

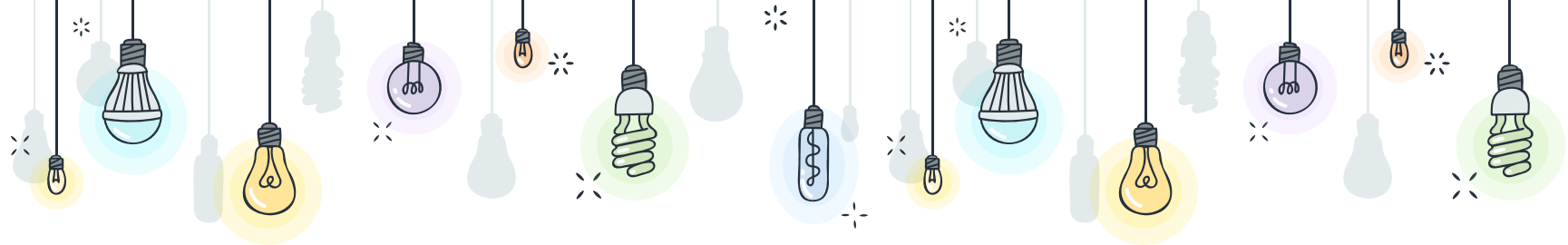


OPEN HOUSE SCHEDULE

Principal Welcome/PTA Meeting	5:45p - 6:25p
Session 1	6:30p - 6:50p
Session 2	6:55p - 7:15p

Principal Gusman will be at the IDEA Center if you want to stop by and check out the building and/or talk story.





*Thank
you!*