

Pearl City High School



Registration Guide 2019-20

www.pchs.k12.hi.us

CONTINUOUS NOTICE OF NON-DISCRIMINATION

The Hawaii State Department of Education (HIDOE) and its schools do not discriminate on the basis of race, sex, age, color, national origin, religion, or disability in its programs and activities. Please direct inquiries regarding HIDOE nondiscrimination policies as follows:

ADA/Section 504 Inquiries: Krysti Sukita, ADA/504 Specialist:

Title VI, Title IX, and other inquiries: Anne Marie Puglisi, Director, Civil Rights Compliance Office, HIDOE,
P.O. Box 2360 Honolulu, HI 96804, (808) 586-3322 or relay, crco@notes.k12.hi.us

TABLE OF CONTENTS

General School Information	2
Graduation Requirements.....	9
Running Start, Early College, Earning College Credits in High School.....	12
College Entrance, NCAA Information.....	13
Academy of Technology & Design	15
Building & Construction	
Design Technology	
Engineering Technology	
Cyber-Security	
Environmental Resource Management	
Academy of Culinary Arts, Health Science & Leadership	18
Culinary	
Leadership/Education	
Hospitality	
Health Services	
Academy of International Business & Design	21
Business	
Digital Media	
Fashion Design	
Graphic Design	
English Language Arts.....	24
English Language Arts Global Electives	25
Mathematics	27
Science.....	30
Social Studies.....	33
Career & Technical Education (CTE) Global Electives.....	35
Health & Physical Education.....	35
Physical Education Global Electives	36
Fine Arts Global Electives.....	37
Music Global Electives.....	39
World Languages Global Electives	41
Miscellaneous.....	44
Special Education	45



Pearl City High School

2100 Hookiekie St.
Pearl City, HI 96782
Phone No.: (808) 307-5500
Fax No.: (808) 453-6521

www.pchs.k12.hi.us

Pearl City High School (PCHS) was established in 1971, graduating its first class in 1974. PCHS is located on the slopes of the Ko'olau Mountain range and overlooks historic Pearl Harbor. The primary feeder school is Highlands Intermediate School, which receives its students from eight area elementary schools: Kanoelani, Lehua, Manana, Momilani, Palisades, Pearl City, Pearl City Highlands, and Waiiau Elementary Schools. Pearl City High School is accredited by the Western Association of Schools and Colleges and is dedicated to high academic expectations for all students.

Pearl City High School offers a wide range of courses designed to meet the academic and career interests of its students. The required and elective programs together support all students in meeting academic standards and becoming college and career ready. PCHS also offers a myriad of co-curricular opportunities that enrich students' academic experiences. The variety of opportunities at PCHS are all intended to develop teamwork, humility, leadership skills, self-confidence, respect, self-discipline, and perseverance, and ultimately for students to embrace and epitomize the six General Learner Outcomes and to meet the challenges of the 21st century.

Principal	Joseph Halfmann	307-5500
Vice Principals	Herman Leong	307-5500
	Anna Costin	307-5500
	Liane Sataraka	307-5500
	Gary Kanamori	307-5500
Counselors	Malamalama Ada	307-5522
	Kayla Arakawa	307-5524
	Ashana Mullins	307-5518
	Mark Oda	307-5523
	Jzchana Rivera	307-5525
	Nikki Takai	307-5605
	Kory Jury, College & Career	307-5574
Danny Tanioka, Outreach	307-5550	
Student Services Coordinator	Charlene Abe	307-5519
Athletic Director	Reid Shigemasa	307-5613
School Activities Coordinator	Kyle Miyashiro	307-5552
Registrar	Laurene Kurata	307-5516
Attendance Office	Liddy Paulmino	307-5506
Special Education	Judith Morton	307-5547
	Connie Calantoc	307-5589

Vision of Pearl City High School



Vision of the PCHS GRADUATE

Pearl City High School graduates have the knowledge, skills and attitudes to compete and thrive in the 21st Century.

Mission

At Pearl City High School, we collaboratively use data to increase student achievement through differentiation and provide rigorous and authentic learning experiences through smaller learning communities that honor student, college and career interests, goals, and choices.

A PCHS graduate personifies the six GENERAL LEARNER OUTCOMES:

- GLO 1: Self-Directed Learner (The ability to be responsible for one's own learning)
- GLO 2: Community Contributor (The ability to work well with others)
- GLO 3: Complex Thinker (The ability to engage in complex thinking and problem solving)
- GLO 4: Quality Producer (The ability to recognize quality performance and produce quality products)
- GLO 5: Effective Communicator (The ability to communicate effectively)
- GLO 6: Effective and Ethical User of Technology (The ability to use a variety of technologies effectively and ethically)

CREDIT

Credit will be awarded as specified in the Authorized Courses and Code Numbers (ACCN) by the Department of Education, State of Hawaii. Only designated courses may be repeated for credit.

PROMOTION POLICY (Beginning with the Class of 2010):

Grade 9 to Grade 10	Minimum of 5 credits
Grade 10 to Grade 11	Minimum of 11 credits
Grade 11 to Grade 12	Minimum of 17 credits

NEW STUDENT REGISTRATION

Student Enrollment at Pearl City High School

Students who are planning to enroll at PCHS must provide the following documentation **before** the enrollment process can begin:

1. Release papers from your previous school
2. Current TB clearance (within the last 12 months) and current physical exam for any out-of-state enrollees
3. Birth Certificate for students coming from a private school or out-of-state
4. Proof of residence in the PCHS district
 - A. Students who reside with their parents in the PC district must provide a current utility bill or original rental agreement with the parents' name and PC High district address listed on it.
 - B. Students who reside with their parents in a relative's residence in the PC High district must provide a **notarized** statement from the PC resident stating that the (name) parents and (name) student reside with them. Also, a current utility bill or original rental agreement of that PC resident must accompany the notarized statement.
 - C. Students who reside with someone other than their parents in the PC High district and whose parents reside elsewhere must have an approved Geographic Exception.
 - D. Students who reside out-of-district must have an approved Geographic Exception.

If the proper documentation is not provided, your child's enrollment may not begin. If you have questions about your Geographic Exception, please see an Administrator.

HEALTH REQUIREMENTS

The Hawaii School Attendance Law requires all students to meet certain health requirements before they may attend any school in the state. School is defined to include any day care center, child care facility, headstart program, preschool, kindergarten, elementary, secondary school, or special school, both public and private.

The health requirements are:

1. Physical Examination: Completed within one (1) year before school entry and performed by a U.S. Licensed MD, DO, APRN or PA.
2. Tuberculosis Clearance: Completed within one (1) year before school entry for children 12 months of age and older. The tuberculin PPD skin test or chest X-ray must be performed in the United States.
3. Immunizations: Immunizations required for school attendance include those against diphtheria, tetanus, pertussis, polio, measles, rubella, mumps, Hepatitis B and varicella.

More specific information may be obtained at the health room, registrar's office, or at the State Department of Health website, www.hawaii.gov/health and click on the Public Health Nursing link.

GENERAL REGISTRATION INFORMATION

Every student should plan his/her program carefully. What courses you take and how well you do in them will help you to realize your future educational and occupational goals.

For the best possible schedule, keep the following in mind:

1. All students must complete a registration form within the given time frame. Any student who fails to do so will be programmed by his/her counselor. Students will be scheduled for a SEVEN-period day.
2. Students should consider the following before selecting their courses: (a) graduation requirements, (b) personal, educational, and career plans, (c) Prerequisites for specific courses, and (d) interests and aptitudes. List your electives in order of priority; courses will be programmed in that order, based upon availability.
3. Be sure to discuss your choices with your parents/guardians. They must approve your course selections.
4. Every student has an equal opportunity to course offerings regardless of race, color, religion, sex, handicap, or national origin.
5. If you need help or have any questions, do not hesitate to ask your teacher, your counselor, or the registrar.

EARNING CREDITS

1. Students must be enrolled in a semester course for a minimum of 1 quarter + 3 weeks to earn 1/2 credit.
2. Students must be enrolled in a year course by the end of the first quarter and be enrolled in that class for a minimum of 3 quarters to earn 1 credit.
3. **Before enrolling in any non-DOE school course (e.g. summer school, correspondence/credit recovery courses, distance learning, e-school courses, etc.), please see your counselor to obtain approval. Courses taken without prior approval may not be granted credit.**

PROGRAM CHANGES

Students are scheduled according to their requests and teacher recommendations as indicated on their registration form. Students who DO NOT TURN IN THEIR REGISTRATION FORMS BY THE DUE DATE WILL BE PROGRAMMED BY THEIR COUNSELOR. We will NOT seek parents' signature or approval for registration forms. Requests for program changes will be denied (this includes elective courses).

Schedule changes will ONLY be allowed for the following reasons:

1. Course passed in summer school,
2. Incomplete or incorrect (misplaced ability level) schedules,
3. Early release (half-day due to employment or early admit to college),
4. Enrollment in special programs,
5. Repeated courses for which credit has been earned,
6. Prerequisite course not taken and/or passed.

Program changes for semester courses must be completed during the first TWO WEEKS of each semester. Any changes done after this time will result in loss of credit.

LATE ENTRY TO SCHOOL

Students who enter school without having attended school prior to the entrance date at PCHS should be given the opportunity to do make up work for the course. If make up work is not done, the student will be awarded "F" for the missed days of school (the highest F for the grading scale used by the teacher).

Students who enter school and have withdrawal grades from a prior school – teachers should average the grade(s) from the prior school with grade(s) earned at Pearl City High School, weighted on the length of time spent at each school.

Students who enter school and do not have withdrawal grades from a prior school because they were in school for less than 3 weeks should be given make up work for the course. Grades will be based on work done at Pearl City High School.

These guidelines also apply to students who enter Pearl City High School during the school year and have missed an extended number of school days. Students who miss numerous days during the transfer from one school to another will be awarded an "F" for those days missed (the highest F for the grading scale used by the teacher).

ACADEMIC REPORT TO PARENTS (REPORT CARDS)

The academic progress of each student is reported four times a year (October, January, April and June) through a report card. Report cards for **Quarters 1, 2, and 3 will be distributed to students to be taken home. The final report card will be mailed home by the end of June.**

In addition, attendance reports will be mailed home to the parents if the student has excessive absences. Progress reports may also be sent home when the teachers see a need for them.

DEMOGRAPHIC DATA (Address Changes, Telephone No. Changes)

If you have a new address or telephone number, please inform the registrar's office by filling out a Student Demographic Change Form. This is the best way for us to keep information updated.

If parents do not want information about their child printed in reports, publications, lists to other agencies, etc. a Non-Disclosure Form must be filled out and submitted to the registrar's office annually.

STUDENT IDENTIFICATION CARD

The purpose for a student identification card is to ensure students of Pearl City High School are readily identifiable for Safety and Security concerns. It will also help to immediately identify those unauthorized person(s), undesirables and trespassers on campus. In addition, the student identification card is encoded with a bar code which allows the student to purchase meals & borrow books from the school library.

ALL Pearl City High School students are required to have their ID card in their possession at all times during school hours. They must be able to show their ID card to any school personnel when asked to do so. Identification cards which are lost, stolen, damaged, forgotten, or misplaced must be immediately replaced for a fee of \$5.00 per occurrence. Further information on the student identification card may be obtained at the Attendance Office.

GEOGRAPHIC EXCEPTIONS

Under Hawaii's laws, students are required to attend the school in the district in which their parents or legal guardians reside; however, permission to enroll at a school in another district may be granted at the discretion of the Department of Education. To obtain a geographic exception, the parents (or legal guardians) must complete the form and contact the administration of the desired school. The deadline for GE forms is on or around March 1 of the previous school year.

Geographic Exceptions that are approved are granted for the remainder of the student's enrollment at the school. Students who move outside the Pearl City district during the school year must obtain a Geographic Exception if they wish to complete the year at Pearl City High.

TEXTBOOK AND LIBRARY LOAN POLICY

1. A student who has outstanding library/textbook obligations will not be issued a textbook. The student will be provided the opportunity to use the textbook in the classroom and/or the library.
2. A student who has outstanding library/textbook obligations will have his/her library borrowing privileges suspended. However, all library resources will be available for use in the library.
3. Privileges will be restored upon clearance of obligations

INTERNET AUP

Every student at Pearl City High School who uses the Internet must have a signed Technology Responsible Use Form (TRUF) on file. The form must be signed by both a parent/guardian and the student. Please contact Audrey Okemura, Librarian at 307-5652 or Kathy Arakaki, Computer Lab Manager at 307-5650 for more information.

SUMMER SCHOOL

Summer school may be available to students who wish to take courses for remediation, make-up, or enrichment. The course offerings during the summer are dependent on student interest and enrollment and are not necessarily the same from summer to summer.

Enrollment is open to all students from grades 9 to 12, including those students who have successfully completed grade 8. A maximum of one (1) credit may be earned and any credit earned becomes part of the permanent high school record for the student.

IMPORTANT NOTE: Courses taken in summer do not guarantee placement into the next course during the regular school year. Students should register ahead to the next course on the assumption that he/she will satisfactorily complete the summer school course. If the student has any changes in his/her summer school plans or does not complete the course satisfactorily, he/she must notify the registrar's office immediately so that every effort can be made to adjust his/her registration for the next school year.

It is recommended that students who take and pass a summer school course come in during the scheduled summer schedule pick-up/course change period to ensure a correct schedule at the start of the school year.

SCHOOL SERVICE (No Credit)

Students may take TWO School Service classes if they have a total of 21 credits by the end of their junior year.

EARLY RELEASE

Early release is available only for those seniors who meet one or more of the following criteria:

1. Currently have a job
2. Are enrolled and attending college classes
3. Are volunteering or interning at a business or organization

Student will need to satisfactorily meet credit requirements to earn a high school diploma. All credit recovery courses (e.g. Plato) must be completed prior to requesting for early release. Students must have consecutive classes - no breaks in periods during the day. See your counselor for details and eligibility.

EARLY ADMITTANCE TO COLLEGE/RUNNING START PROGRAM

Students who wish to enroll in classes at the University of Hawaii or at one of the community colleges while completing high school must see the post-high school counselor for requirements and deadlines. See page 14 for more information.

AP COURSES

Advanced Placement courses provide students the opportunity to learn in a rigorous, intense, and deeply challenging college-level environment. AP courses are designed to help build college skills and confidence and earning college credits while in high school saves you both time and money in college. All AP students are required to take the AP Exams in May (approximately \$94 per exam) and may earn college credit for the course by achieving qualifying scores. Due to the heavy coursework, students are not recommended to take more than 2 AP courses per year.

AP Courses offered at Pearl City High School:

- AP Biology
- AP Calculus AB
- AP Chemistry*
- AP English Language and Composition
- AP English Literature and Composition
- AP Physics*
- AP Psychology
- AP Statistics

*Concurrent enrollment in the lab class is required

E-SCHOOL COURSES

These courses offer ACCN Carnegie units for graduation credits. The courses are served out to the students all across the State of Hawaii using a combination of the Internet (email, threaded conversation, Internet Relay Chat, Web Pages) video and the Educational/Public Access television channel. Students should be able to work independently and have good time management skills.

Students must have their E-School Registration forms signed off by their counselor, the principal, the registrar and the site facilitator. Students who do not have the E-school registration forms signed will be dropped from the class.

Courses that are offered on campus may not be taken via E-school, except if taken during the summer session. E-school courses should be for enhancement or interest and should not be taken to fulfill graduation requirements, except for credit recovery.

Students may take up to one E-school course per session. All students taking E-school courses must be enrolled full-time at PCHS (6 classes during the school day). If the E-school course is approved by the principal, students must also register for their E-school course on-line. Students must have their own access to the internet and the Educational/Public Access television channel.

Registration forms for E-school courses may be obtained by printing them when students register on-line. Interested students, please see your counselor for further information.

CREDIT RECOVERY

Students who need make-up credits must see their counselor for assistance.

TRANSCRIPTS

Transcript Request forms are available in the Registrar's Office or on our Pearl City High School website (print form, fill out completely, sign, and either mail or bring it in to the Registrar's Office).

- Processing time for a transcript request is 3 - 5 business days.
- Cost is \$1.00 per request (cash or money order only - no personal checks).
- An "official" transcript is mailed directly to a school or organization; hand-carried transcripts, or transcripts mailed to an individual, are marked "unofficial."

TRANSFER

A student withdrawing from Pearl City High School must obtain a "Request for Release" form from the Registrar's office. The completed form must be returned to the Registrar's office at least one week prior to the student's last day.

Withdrawing students are given a clearance form which must be signed by each of the student's teachers, the librarian, the account clerk, and the counselor. All books/equipment must be returned and financial obligations cleared. A release packet is given to the student to take to the new school. The student's official school records will be sent to the receiving school upon request from the new school. Students transferring during the summer months should arrange for their release prior to the end of the school year.

Students must be enrolled until the last 2 weeks of the school year to receive year-end grades.

FOOD SERVICES

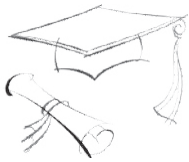
- Breakfast is served daily from 7:10 a.m. to 7:55 a.m. Breakfast is \$1.20, lunch \$2.75.
- Wiki breakfast will be available during first recess (\$1.20/\$2.40 for second breakfast).
- Students on the FREE lunch program are entitled to **one breakfast and one lunch daily at no charge**. Students on the REDUCED lunch program are entitled to **one breakfast (30¢) and one lunch (40¢) daily**, which will be deducted from their accounts for each first breakfast and first lunch of the day. FREE and REDUCED lunch participants will have **\$5.50 deducted from their accounts for any second lunch and \$2.40 for any second breakfast of the day**. *Please notify your student when notice of eligibility arrives. Many students qualifying for the free/reduced program are not aware of their benefits.*
- ID cards are required for all purchases in the cafeteria. It is school policy that all students & school personnel wear their ID tags throughout the day. For questions about your lunch account/balance, call the Attendance Office at 307-5506.

2.0 ELIGIBILITY FOR CO-CURRICULAR ACTIVITIES

All students who wish to participate in co-curricular activities must meet eligibility requirements as set by the Board of Education. The D.O.E. Parent & Athlete Handbook can be found at the Pearl City High School website (www.pchs.k12.hi.us) under "Athletics."

BUS TRANSPORTATION

Please call Ground Transport, Inc., at 833-4222 for information on bus services.



GRADUATION REQUIREMENTS

From: <http://www.hawaiipublicschools.org/>

A Hawaii High School Diploma shall be issued to students who meet the following minimum course and credit requirements (Board of Education [Policy 102-15](#)):

CREDITS	HIGH SCHOOL DIPLOMA
ENGLISH	4 credits including: English Language Arts 1 (1.0 credit); and English Language Arts 2 (1.0 credit); and Expository Writing* (0.5 credit); and English Language Arts basic electives (1.5 credits)
SOCIAL STUDIES	4 credits including: U.S. History and Government (1.0 credit); and World History and Culture (1.0 credit); and Modern History of Hawaii (0.5 credit); and Participation in a Democracy (0.5 credit); and Social Studies basic elective (1.0 credit)
MATHEMATICS	3 credits including: Algebra 1 (1.0 credit); and Geometry (1.0 credit); and mathematics basic elective (1.0 credit)
SCIENCE	3 credits including: Biology 1 (1.0 credit); and science basic electives (2.0 credits)
<ul style="list-style-type: none"> • WORLD LANGUAGES (note 1) • FINE ARTS (note 2) • CAREER & TECHNICAL EDUCATION / JROTC (note 3) 	2 credits in one of the specified programs of study.
PHYSICAL EDUCATION (P.E.)	1 credit including Physical Education Lifetime Fitness (0.5 credit); and Physical Education basic elective (0.5 credit)
HEALTH	0.5 credit in Health Today and Tomorrow
PERSONAL TRANSITION PLAN	0.5 credit
ELECTIVES (Any Subject Area)	6 credits
TOTAL:	24 credits

**Or equivalent course.*

Notes:

1. Two credits in a single World Language. Credits must be taken in sequence with consecutive course numbers in the study of one language.
2. Two credits in a Fine Arts discipline: Visual Arts, Music, Drama or Dance. Credits do not need to be in a single discipline.
3. CTE: Two credits need to be in a single career pathway program of study sequence. JROTC: Two consecutive JROTC courses fulfill CTE two credits for diploma requirements.

Honors Recognition Certificate Requirements

In addition to meeting the requirements for the Hawaii High School Diploma, students must attain a cumulative GPA of 3.0 or above to qualify for a honors recognition certificate in one or more of the honors described below.

ACADEMIC HONORS:

- 4 credits of Math: The four credits must include one credit for Algebra 2 and one credit beyond Algebra 2. The credit beyond Algebra 2 must be earned via the following courses or equivalent AP or IB or Running Start math courses: Algebra 3, Trigonometry, Analytic Geometry, Pre-Calculus, Probability/Statistics, Introduction to College Mathematics, or Calculus. AND
- 4 credits of Science: Of the four credits, one credit must be in Biology 1 or equivalent IB Biology; or AP Biology courses. AND
- 2 credits minimum must be from AP/IB/Running Start courses (equivalent to credits for two college courses).

CTE HONORS:

- Completes an identified program of study
 - Earn a “B” or better in each required program of study course (this includes 2-3 CTE courses in sequence plus a state-identified academic course requirement)
 - Meet or exceed proficiency on performance-based assessments for corresponding program of study

Academy	Program of Study	Required Academic Course "B" or better for CTE Honors
International Business & Design	Graphic Design	Expository Writing
International Business & Design	Digital Media	Expository Writing
International Business & Design	Fashion Design	Geometry
International Business & Design	Accounting	Economics
International Business & Design	Business Law	Economics
International Business & Design	Marketing	Economics
Technology & Design	Building & Construction	Geometry
Technology & Design	Design Technology	Algebra I
Technology & Design	Engineering Technology	Algebra II
Technology & Design	Cybersecurity	Algebra II
Technology & Design	Plant Systems	Biology
Technology & Design	Environmental Resource Management	Biology
Culinary Arts, Health Sci & Leadership	Health Services	Biology
Culinary Arts, Health Sci & Leadership	Education / Leadership	Psychology
Culinary Arts, Health Sci & Leadership	Hotel Operations/ Hospitality	Psychology
Culinary Arts, Health Sci & Leadership	Culinary	Biology

CTE Honors for the Class of 2020

PCHS students pursuing the CTE Honors Recognition Certificate will complete their performance-based assessments through their CTE course during their senior year. Students not enrolled in a Level 2 CTE course are not eligible for the CTE Honors Recognition Certificate.

STEM HONORS:

- **4 credits of Math:** The four credits must include one credit for Algebra 2 and one credit beyond Algebra 2. The credit beyond Algebra 2 must be earned via the following courses or equivalent AP or IB or Running Start math courses: Algebra 3, Trigonometry, Analytic Geometry, Pre-Calculus, Probability/Statistics, Introduction to College Mathematics, or Calculus. AND
- **4 credits of Science:** Of the four credits, one credit must be in Biology 1 or equivalent IB Biology; or AP Biology courses.
- **Successful completion** of a **STEM Capstone Project** in one of the approved ACCN courses.

STEM Honors for the Class of 2020

PCHS students pursuing the STEM Honors Recognition Certificate will complete their STEM Capstone Project through either a designated Level 2 CTE course or the STEM Capstone course during their senior year. Students not enrolled in a designated Level 2 CTE course must enroll in the STEM Capstone course.

Students can complete their STEM Capstone Project requirements through the following designated Level 2 CTE courses:

- Building and Construction II
- Natural Resources Pathway Capstone
- Design Technology II
- Engineering Technology II
- Cyber Security
- Health Services Career Pathway Capstone
- STEM Capstone

Grade Point Average

This cumulative grade point average applies to all graduates:

- Cum Laude with a GPA of 3.0 to 3.5
- Magna Cum Laude with a GPA of 3.5+ to 3.8, and
- Summa Cum Laude with a GPA of 3.8+ and above.

Valedictorian Designation

Effective for the Class of 2016 and beyond, graduating seniors will be declared valedictorian if the following criteria are met:

- GPA of 4.0; and
- Earned and met the requirements of one of the Honor Recognition Certificates.
- Valedictorians will be named after the third quarter.

EARN COLLEGE CREDITS WHILE IN HIGH SCHOOL!

Running Start provides an opportunity for academically qualified students to enroll in college classes at the University of Hawai'i system during the fall, spring, and summer while earning both high school and college credits.

Regular tuition costs apply, however financial aid may be available to cover the cost of tuition and books for students who qualify to receive free or reduced lunch. Only specific courses weighted grade on a 5 point scale factors into your high school g.p.a.

Early College is an initiative that allows high school students to take college classes on their high school campus. It's available for grades 10, 11 & 12. Cost partially subsidized by PCHS. Students can earn both high school and college credits. Only specific courses weighted on a 5 point scale in your high school g.p.a.

Steps to participate in Running Start and/or Early College

Step 1: Meet with your counselor to determine course(s)

Step 2: Work with your counselor to apply for specific course(s). Needs to be accurate!

Step 3: Take the Accuplacer placement test to determine if you qualify for the course or provide qualifying ACT, SAT, or SBAC scores

Step 4: Health Clearance (1 Tuberculosis Test – no later than a year from the 1st day of instruction of the class and 2 MMR immunization)

Step 5: Turn in all necessary documents to C103

Apply at: www.hawaii.edu/dualcredit and apply.hawaii.edu

Advanced Placement Exams: Students may earn college credits by passing AP Exams in May of each year. Financially disadvantaged students may qualify to take the exams at reduced fees.

Summer Scholar is a program at the UH Manoa for students who want to take a summer course at Manoa after their 10th or 11th grade year. Must have a 3.5 g.p.a. Students earn college credits only. Details at: www.outreach.hawaii.edu/summerscholar/

Early Admit allows qualified 11th or 12th graders to take college classes at the University of Hawaii systems campuses during the summer, fall, and spring terms while still in high school. Students earn **college credits only**. Regular tuition costs apply.

Be aware that if you fail or withdraw from a college course after their deadline to withdraw, it may affect you getting financial aid once you enter college after high school.

Also, college course grades taken in the Spring of your 12th grade year, will not arrive in time for graduation or Honors Certificate purposes.

For details on the above, visit the PCHS College & Career Center, C103

Contact Kory Ann Jury, PCHS Counselor 307-5574, kory_jury@notes.k12.hi.us

INFORMATION FROM THE COLLEGE & CAREER COUNSELOR

Specific Courses are Required for Entrance Into College

Example: University of Hawaii at Manoa's Admissions Requirements:

1. Cumulative GPA of 2.8, SAT or ACT scores, rank in top 40% of class.
2. Geometry and Algebra 2, 3 sciences (biology, chemistry, physics recommended). Two years of a foreign language not required, but strongly recommended.

Recommended Schedule of When to Take the College Entrance Tests

- 10th grade: PSAT (practice for the SAT) in October
 11th grade: ACT free in February for all 11th graders
 SAT 2nd semester – May or June. Go to sat.org/register
 12th grade: Re-take the SAT and/or ACT as early as possible

Requirements For Participating in College Athletics

It is your responsibility to register for the appropriate, “approved” core courses required for participation in college athletics. See the next page in this guide for the PCHS approved course list. Go to www.NCAA.org/playcollegesports for specifics.

Division I Academic Requirements	Division II Academic Requirements
<p><u>Complete 16 core courses in the following areas:</u></p> <ul style="list-style-type: none"> • 4 years of English • 3 years of math (Algebra 1 or higher) • 2 years of natural/physical science (1 year lab if offered) • 1 year of additional English, math or natural/physical science • 2 years of social studies • 4 years of additional courses (any area above, foreign language or comparative religion/philosophy) <p><u>Full Qualifier:</u></p> <ul style="list-style-type: none"> • Complete 16 core courses: <ul style="list-style-type: none"> ○ 10 of the 16 core courses must be completed prior to the seventh semester (senior year) of high school and cannot be retaken for higher grade improvement. ○ 7 of the 10 core courses must be in English, math or science • Earn a core-course GPA of at least 2.3 • Earn the ACT/SAT score matching your core-course GPA on the Division I sliding scale (see NCAA website) <p><u>Academic Redshirt:</u> (Students may receive athletic scholarships during their first year of enrollment and may practice during their first regular academic term but may NOT compete during their first year.)</p> <ul style="list-style-type: none"> • Complete 16 core courses • Earn a core-course GPA of at least 2.0 • Earn the ACT/SAT score matching your core-course GPA on the Division I sliding scale 	<p><u>Complete 16 core courses in the following areas:</u></p> <ul style="list-style-type: none"> • 3 years of English • 2 years of math (Algebra 1 or higher) • 2 years of natural/physical science (1 year lab if offered) • 2 years of social studies • 3 additional years of English, math or natural/physical science • 4 years of additional courses (any area above, foreign language, or comparative religion/philosophy) <p><u>Full Qualifier:</u></p> <ul style="list-style-type: none"> • Complete 16 core courses • Earn a core-course GPA of at least 2.0 • Earn an SAT combined score of at least 820 or an ACT sum score of at least 68 <p><u>Partial Qualifier:</u> (Can practice at home facility, receive athletic scholarship first year, but cannot compete first year. Can play 4 seasons if academic eligibility is maintained)</p> <ul style="list-style-type: none"> • Complete 16 core courses • Earn a core-course GPA of at least 2.0 <li style="text-align: center;">OR • Earn an SAT combined score of at least 820 or an ACT sum score of at least 68 <p style="text-align: right;"><i>Revised 09/2016</i></p>
<p><u>Nonqualifier</u> – College-bound student-athletes cannot practice, receive athletic scholarships or compete during their first year of enrollment at an NCAA Division I and II school. Can play 4 seasons if academic eligibility is maintained.</p>	

National Association of Intercollegiate Athletics Eligibility – go to playnaia.org
 National Junior College Athletic Association Athletics – go to njcaa.org

NCAA Initial Eligibility Clearinghouse Information

Pearl City High School's NCAA Approved Core Courses (as of 9/21/2016)

ENGLISH

ENG LANG ARTS 1 GR 9
ENG LANG ARTS 2 GR 10
ENG LANG ARTS 4 GR 12
ENGLISH / AP
EXPOSITORY WRITING 1
EXPOSITORY WRITING 2

SOCIAL SCIENCE

AP PSYCHOLOGY I
AP PSYCHOLOGY II
AM PROBLEMS
ANTHROPOLOGY
ECONOMICS
GEOGRAPHY
HAWAIIAN STUDIES
HIST OF THE PACIFIC
MOD HISTORY OF HAWAII
PART IN A DEMOCRACY
PSYCHOLOGY
SOCIOLOGY
US HIST & GOVT I
WORLD HISTORY/CULTURE

MATHEMATICS

ALGEBRA 1
ALGEBRA 2
ALGEBRA 3
ANALYTIC GEOMETRY
CALCULUS/AP
GEOMETRY
PRE CALCULUS
STATISTICS
TRIGONOMETRY

NATURAL/PHYSICAL SCIENCE

AP BIOLOGY
AP PHYSICS 1 ALGEBRA-BASED
AP PHYSICS
BIOLOGY
CHEMISTRY
CHEMISTRY/AP
EARTH SCIENCE
HUMAN PHYSIOLOGY
MARINE SCIENCE
PHYSICAL SCIENCE
PHYSICS

ADDITIONAL CORE COURSES

FRENCH 1
FRENCH 2
FRENCH 3
FRENCH 4
HAWAIIAN 1
HAWAIIAN 2
HAWAIIAN 3
HAWAIIAN 4
JAPANESE 1
JAPANESE 2
JAPANESE 3
JAPANESE 4
SIGN 1A/1B
SIGN 2A/2B
SPANISH 1
SPANISH 2
SPANISH 3
SPANISH 4

ACADEMY OF TECHNOLOGY & DESIGN



Vision

Graduates of Pearl City High School's Academy of Technology and Design successfully interacts in a technological environment to achieve their personal, educational, and workplace goals. As lifelong learners, they will work cooperatively for the improvement of society for future generations with their innovative ideas.

Mission

Pearl City High School's Academy of Technology and Design provides meaningful opportunities for all students in a dynamic learning environment which emphasizes real-world career experiences and college opportunities to create responsible, ethical, and successful global citizens.

INDUSTRIAL & ENGINEERING TECHNOLOGY					
PROGRAM OF STUDY	SUBJECT	9 th Grade	10 th Grade	11 th Grade	12 th Grade
	LANGUAGE ARTS	English LA 9	English LA 10	English LA 11 or AP English Language	English LA 12 AP English Literature
	MATH	Algebra 1 or Geometry	Geometry, MOW2, or Algebra 2	Next Level Math Course	Next Level Math Course or Global Elective
	SCIENCE	Integrated Science	Biology	Science Elective	Science Elective or Global Elective
	SOCIAL STUDIES	U.S. History	World History	Modern Hist. of HI / Part. In a Democracy	Senior Social Studies Elective
	ELECTIVE / OTHER	Global Elective	PE Lifetime Fitness/ PE Lifetime Activities	Global Elective	Global Elective
	ELECTIVE / OTHER	Global Elective	Global Elective	Global Elective	Global Elective

For the Class of 2022 and Beyond:

BUILDING & CONSTRUCTION	CTE	Freshman Seminar	Building & Construction I	Building & Construction II	IET Pathway Capstone
DESIGN TECHNOLOGY			Design Technology I	Design Technology II	IET Pathway Capstone
ENGINEERING TECHNOLOGY			Engineering Technology I	Engineering Technology II	IET Pathway Capstone
CYBER-SECURITY			Networking & LAN	Cyber Security	IET Pathway Capstone

For the Class of 2020 & 2021:

BUILDING & CONSTRUCTION	CTE	Pathway Exploration/ Health	IET Pathway Core	Building & Construction I	Building & Construction II
DESIGN TECHNOLOGY			IET Pathway Core	Design Technology I	Design Technology II
ENGINEERING TECHNOLOGY			IET Pathway Core	Engineering Technology I	Engineering Technology II
CYBER-SECURITY			IET Pathway Core	Computer Electronics or Networking & LAN	Cyber Security

Seniors wanting to earn CTE / STEM Honors must be enrolled in a Second (Class of 2020 & 2021) or Third Level Course (Class of 2022 and beyond).

TIU5800 Building and Construction 1

This first year course develops skill proficiency in the safe operation and use of hand tools and industrial power machinery. Students will learn and apply skills in identifying and selecting materials based on their uses. Students will learn and apply skills in identifying and selecting materials based on their uses. Students will learn to read and understand drawing plans to construct required projects. Students will develop, design, and construct a wood project for personal use. Students are required to wear provided safety glasses. **\$15 Lab fee & covered shoes required.**

TIN5814 Building and Construction 2

This second year course designed to develop skills and provide technical knowledge in the building construction occupations. The main course of study includes classroom and shop or field site experiences that deal with erecting, installation, maintenance or repair of building and structures using assorted materials such as metal, wood, concrete, or composition products. Instructions are provided in various skill activities such as cutting, fitting, fastening and finishing various materials. Learning experiences will also involve use of a variety of hand tools and portable power tools, blueprint reading, scale model building and field projects. **\$15 Lab fee & covered shoes required. Prerequisite: "C" or better in Building & Construction 1**

TIU5810 Engineering Technology 1

This first year course is designed to introduce students to various engineering processes, concepts, and techniques through the use of hands on, real world projects. Students will explore civil, mechanical and electrical engineering problems; and use design innovation and manufacturing processes. Technical reading/writing, math and science knowledge and skills will be integrated and applied throughout the course. **\$10 Lab fee.**

TIU5810 Engineering Technology 2

This second year course is designed to provide students an in-depth study of a variety of engineering fields via real world engineering design challenges. Students will apply their understanding of physics, chemistry and biology, along with computer-integrated manufacturing technology to develop/design, test, and improve their design solutions. Technical reading/writing/presentation and related mathematics and science knowledge and skills will be integrated and applied throughout the course. **\$10 Lab fee. Prerequisite: "C" or better in Engineering 1**

TIU5310 Design Technology 1

This first year course provides classroom learning experiences that are found in drafting technology. Learning activities include: design, spatial visualization and techniques, sketching and use of digital tools, shape and size description, auxiliaries, rotation, pictorial drawings, computer-aided design, and the creation of two dimensional and three dimensional models for problem solution.

TIN5320 Design Technology 2

This second year course organizes learning experiences, which emphasizes theory, use of computer aided design, and laboratory work as related to designing, and translating data or specifications. Planning, preparing, and interpreting mechanical, architectural, structural, electronics, topographical, and designs and schematics are included. Instruction is designed to provide experiences with computer aided design and other industry standard tools to create solutions to real-world problems. **Prerequisite: "C" or better in Design Technology 1.**

TIU5713 Networking Fundamentals and Local Area Networks

This first year course provides skills and knowledge on how WANs are built: what technologies are used, and how systems are configured to maintain and troubleshoot WANs. Students will also learn about networking architectures and how they are integrated into corporate computing environments.

TIN5520 Cybersecurity

This second year course covers Network Security building upon the knowledge learned from the Network and LAN Fundamentals and has students apply that knowledge into securing system networks. Through this course, students will identify vulnerabilities and attack mechanisms to a network on various platforms and use intrusion detection systems

and other methods to mitigate security risks. Emphasis will be placed on the application of skills in detection and the utilization of strategies to combat identified threats. **Prerequisite: "C" or better in Network Fundamentals & LAN.**

NATURAL RESOURCES					
PROGRAM OF STUDY	SUBJECT	9 th Grade	10 th Grade	11 th Grade	12 th Grade
	LANGUAGE ARTS	English LA 9	English LA 10	English LA 11 or AP English Language	English LA 12 AP English Literature
	MATH	Algebra 1 or Geometry	Geometry, MOW2, or Algebra 2	Next Level Math Course	Next Level Math Course or Global Elective
	SCIENCE	Integrated Science	Biology	Science Elective	Science Elective or Global Elective
	SOCIAL STUDIES	U.S. History	World History	Modern Hist. of HI / Part. In a Democracy	Senior Social Studies Elective
ENVIRONMENTAL RESOURCE MANAGEMENT	CTE	Freshman Seminar	Natural Resources Core	Environmental Resource Management	Natural Resources Pathway Capstone
	ELECTIVE / OTHER	Global Elective	PE Lifetime Fitness/ PE Lifetime Activities	Global Elective	Global Elective
	ELECTIVE / OTHER	Global Elective	Global Elective	Global Elective	Global Elective

TNC6010 Natural Resources Career Pathway Core

This first year course is designed for students who plan to pursue careers in the Natural Resources Career Pathway. Students will be introduced to basic concepts of agriculture, earth sciences, environmental sciences, fisheries and forestry. Using an interdisciplinary approach, the following concepts will be covered: 1) Scientific processes and systems, 2) Technology and biotechnology, 3) Natural resources management, 4) Environmental protection, and 5) Legal responsibility and ethics.

TNU6123 Environmental Resource Management

This second year course is designed to provide a comprehensive contextual place-based program in environmental resource management as it relates to Natural Resources Pathway careers. It emphasizes control, maintenance, and best practices to sustain environmental and natural resource areas. The major concepts of geography, resource inventory and assessment, and sustainability and stewardship should be covered with the awareness of the various industries, social, and economic activities related to these areas. Examples include wind farms, geothermal energy, and coastal water activities.

TNK6990 Natural Resources Pathway Capstone

This third year course reflects the culmination of knowledge, skills, and attitude by senior students in the Natural Resource Career Pathway. This senior project provides a venue for seniors to plan and execute individualized study on a topic of particular interest to them. Participants will have their independent study and research periodically assessed by the instructor. Students are to enlist the guidance of an adult mentor from the school or community. The following products are required from the senior participating in a Capstone Project: 1) a research paper to demonstrate information and knowledge acquisition skills, 2) a formal oral report before a panel of industry experts, 3) and a portfolio that relates the "learning journey" and verifies the learning process. The topics of interest will be student driven and the choice of media for presentation will be at the discretion of the student presenter. **Prerequisite: "C" or better in both Natural Resource Core and Environmental Resource Management.**

ACADEMY OF CULINARY ARTS, HEALTH SCIENCE & LEADERSHIP



Vision

The Academy of Culinary Arts, Health Sciences, and Leadership graduates are ethical professionals leading our community and providing quality services.

Mission

The Academy of Culinary Arts, Health Sciences, and Leadership provide relevant learning experiences through a rigorous interdisciplinary curriculum enriched by community partnerships for all students.

PUBLIC & HUMAN SERVICES					
PROGRAM OF STUDY	SUBJECT	9 th Grade	10 th Grade	11 th Grade	12 th Grade
	LANGUAGE ARTS	English LA 9	English LA 10	English LA 11 or AP English Language	English LA 12 AP English Literature
	MATH	Algebra 1 or Geometry	Geometry, MOW2, or Algebra 2	Next Level Math Course	Next Level Math Course or Global Elective
	SCIENCE	Integrated Science	Biology	Science Elective	Science Elective or Global Elective
	SOCIAL STUDIES	U.S. History	World History	Modern Hist. of HI / Part. In a Democracy	Senior SS Elective Psychology/Sociology*
	ELECTIVE / OTHER	Global Elective	PE Lifetime Fitness/ PE Lifetime Activities	Global Elective	Global Elective
	ELECTIVE / OTHER	Global Elective	Global Elective	Global Elective	Global Elective

For the Class of 2022 and Beyond:

CULINARY	CTE	Freshman Seminar	Culinary 1	Culinary 2	Public & Human Services Pathway Capstone
LEADERSHIP*			Explorations in Education	Elementary / Secondary Education	Public & Human Services Pathway Capstone
HOSPITALITY*			Hospitality & Tourism	Hospitality Career & Customer Service Skills	Public & Human Services Pathway Capstone

For the Class of 2020 & 2021:

CULINARY	CTE	Pathway Exploration / Health	Public & Human Services Core	Culinary 1	Culinary 2
LEADERSHIP*			Public & Human Services Core	Explorations in Education	Elementary / Secondary Education
HOSPITALITY*			Public & Human Services Core	Hospitality & Tourism	Hospitality Career & Customer Service Skills

TPU7216 Culinary 1

This first year course provides an introduction and orientation to a series of related occupations in the food industry and the qualifications of a successful food service worker. The knowledge, skills, work attitudes, and habits developed will enable students to understand basic principles of quantity food preparation, safety and sanitation, use and care of equipment, and food service organization. This course provides practical work experiences in the classroom and laboratory. **Covered shoes and \$40 lab fee required.**

TPN7223 Culinary 2

This second year course is designed to qualify an individual for entry-level positions in the food industry. Classroom and laboratory experiences place an emphasis on quantity food preparation and service, sanitation, safety, selection and purchasing of food and supplies, storeroom control, and care of supplies and equipment. **Covered shoes and \$40 lab fee required. Prerequisite: "C" or better in Culinary 1**

TPU7510 Hospitality & Tourism

This first year course is to give students an in depth view of each major sector in the hospitality and tourism industry-- travel & tourism, hotel & lodging, cruises, food & beverage outlets, attractions, meetings & conventions and special events focusing on how they interrelate to create the ultimate experience for leisure and business travelers. In addition, students will learn about career and management opportunities, job qualifications and benefits within these sectors of hospitality and tourism industry.

TPN7522 Hospitality Career and Customer Service Skills

The purpose of this course is to prepare students for a career in the hospitality and tourism industry. Students will learn job hunting strategies and techniques including resume writing and job interview preparation, and they will practice behaviors such as teamwork and business etiquette that display professionalism in the workplace. Methods of handling dissatisfied customers and exceeding customer expectations will be identified along with an explanation of how hospitality and tourism organizations build customer loyalty.

TPU7210 Explorations in Education

This first year course students explore the numerous career opportunities in education ranging from pre-kindergarten to post-secondary teaching as well as administration careers. Students will be introduced to leadership, learning styles, teaching strategies, organization and management, salaries and benefits, and educational issues.

TPN7914 Elementary Education

This second year course is designed to provide a focused preparation for students interested in pursuing a career in elementary (Kindergarten to sixth grade) teaching. Basic knowledge, skills and attitudes that will help students understand the principles of child growth, development, learning styles and teaching strategies will be addressed. The course will include school structure, organization and management related to elementary students as well as the details of salaries, benefits and relevant issues for the elementary teacher. Field experiences in classroom observations and practical participation is a course requirement. **Prerequisite: "C" or better in Explorations in Education.**

TPN7422 Secondary Education

This second year course is designed to provide a focused preparation for students interested in pursuing a career in secondary (seventh to twelfth grade) teaching. Basic knowledge, skills and attitudes that will help students understand the principles of child growth, development, learning styles and teaching strategies will be addressed. The course will include school structure, organization and management relevant issues for the secondary teacher. Field experiences in classroom observations and practical participation are course requirements. **Prerequisite: "C" or better in Explorations in Education.**

TPK7990 Public & Human Service Career Pathway Capstone, grade 12

This third year course reflects the culmination of knowledge, skills, and attitudes by students in the Public and Human Services Career Pathway: Culinary, Hospitality, Leadership/Education. This course provides a venue for students to plan and execute individualized study on a topic of particular interest to them. Participants will have their independent study and research periodically assessed by the instructor. Students are to enlist the guidance of an adult mentor from the school or community. The following products are required from the students in a Capstone Project: 1) a research paper to demonstrate information and knowledge acquisition skills, 2) a formal oral report before a panel of industry experts, 3) and a portfolio/project that relates the "learning journey" and verifies the learning process. The topics of interest will be student driven and the choice of media for presentation will be at the discretion of the student presenter.

Prerequisite: "C" or better in both the first and second year program of study courses.

HEALTH SERVICES					
PROGRAM OF STUDY	SUBJECT	9 th Grade	10 th Grade	11 th Grade	12 th Grade
	LANGUAGE ARTS	English LA 9	English LA 10	English LA 11 or AP English Language	English LA 12 AP English Literature
	MATH	Algebra 1 or Geometry	Geometry, MOW2, or Algebra 2	Next Level Math Course	Next Level Math Course or Global Elective
	SCIENCE	Integrated Science	Biology	Science Elective	Science Elective or Global Elective
	SOCIAL STUDIES	U.S. History	World History	Modern Hist. of HI / Part. In a Democracy	Senior SS Elective
HEALTH SERVICES	CTE	Freshman Seminar	Health Services Core	Clinical Health	Health Services Pathway Capstone
	ELECTIVE / OTHER	Global Elective	PE Lifetime Fitness/ PE Lifetime Activities	Global Elective	Global Elective
	ELECTIVE / OTHER	Global Elective	Global Elective	Global Elective	Global Elective

THC4010 Health Services Pathway Core

This first year course is designed for students who plan to pursue careers in the healthcare industry. Using a multidisciplinary approach, students will gain essential knowledge and skills about healthcare systems, ethics, safety practices, legal systems, preventive care, employment expectations and cultural awareness and sensitivity in dealing with patients and healthcare personnel. Students will learn to apply effective communication skills and technologies in the delivery of healthcare. **Community service hours are required throughout the year. Students will be assessed a \$30.00 lab fee (CPR/FA Certification, pathway polo shirt, lab supplies).**

THI4027 Clinical Health

This second year course is designed using the anatomical systems as the framework, students will learn about common health problems for each system, as well as the various healthcare providers responsible for diagnosis and treatment of each system-related disease, illness, or injury. This course will combine skills and information common to all health careers with work-based learning experiences that will result in a special career selection consistent with the student's aptitudes, interests, abilities, and academic achievement. **Community service hours are required throughout the year. Students will be assessed a \$15 lab fee. Prerequisite: Completion of Health Services Pathway Core with "C" or better, instructor signature required.**

THC4010 Health Services Career Pathway Capstone

This third year course curriculum will build upon knowledge gained in Clinical Health for application to STEM and/or CTE Honors diploma requirements. Students will investigate important ideas and questions using inquiry, creative and critical thinking, and informational skills to draw conclusions about, and create content, while connecting to real world and authentic issues related to the health care field. **Community service hours are required. Prerequisite: Completion of Clinical Health with a "C" or better, instructor signature required.**

ACADEMY OF INTERNATIONAL BUSINESS & DESIGN



Vision

Graduates of the Pearl City High School’s Academy of International Business and Design will be able to communicate effectively with a global audience by applying principles of business and design through a variety of arts and media.

Mission

Pearl City High School’s Academy of International Business and Design provides meaningful opportunities in a dynamic learning environment that emphasizes real-world career experiences to help prepare our students for college and career planning.

BUSINESS					
PROGRAM OF STUDY	SUBJECT	9th Grade	10th Grade	11th Grade	12th Grade
	LANGUAGE ARTS	English LA 9	English LA 10	English LA 11 or AP English Language	English LA 12 AP English Literature
	MATH	Algebra 1 or Geometry	Geometry, MOW2, or Algebra 2	Next Level Math Course	Next Level Math Course or Global Elective
	SCIENCE	Integrated Science	Biology	Science Elective	Science Elective or Global Elective
	SOCIAL STUDIES	U.S. History	World History	Modern Hist. of HI / Part. In a Democracy	Economics/ American Problems
BUSINESS	CTE	Freshman Seminar	Business Pathway Core	Marketing or Accounting	Entrepreneurship
	ELECTIVE / OTHER	Global Elective	PE Lifetime Fitness/ PE Lifetime Activities	Global Elective	Global Elective
	ELECTIVE / OTHER	Global Elective	Global Elective	Global Elective	Global Elective

TBC3010 Business Management/Technology Core

This first year course is designed for students who want to know what businesses must understand to be successful. Students will learn essential business concepts that will provide a solid foundation for further study in preparation for careers in business. Students will utilize technology for a variety of business applications and communications; demonstrate effective customer service understand business environments and learn proper workplace behavior; and use accounting and financial concepts to evaluate business decisions.

TBU3510 International Business (Marketing: Principles and Applications)

This second year course provides students with an understanding of marketing, its important role in America’s free enterprise system, and the world. It also provides opportunities to develop the basic social, marketing and personal skills necessary for successful employability in all career majors. Concepts learned come alive in the marketing plan students will develop for an actual business. DECA is co-curricular with marketing.

Prerequisite: Business Management/Technology Core

TBU3110 Beginning Accounting

This second year course emphasizes accounting principles as they relate to the basic understanding and skills required to keep manual and computerized financial records for a business. Emphasis is on providing students

with entry-level skills for the accounting and/or preparation for further study in accounting and business. **Must purchase (\$30.00) required workbook. Prerequisite: Business Management/Technology Core**

TBN3810 Entrepreneurship

This third year course introduces students to the process of recognizing opportunities and planning for the establishment of a small business. Concepts introduced will be applied and practiced. Community mentors in related fields will assist students as they implement their chosen enterprises. Students will be able to explore the unique relationships between business and the culture and values found in Hawaii today. Students will design, develop, and implement a business plan. Assessments and evaluations will be done in partnership with business and industry. **Prerequisite: Completion of Business Management/Technology Core and a Business Pathway Second Year Course.**

GLOBAL ELECTIVES

EXS1200 Tools for the Information Age, global elective 1st Semester Course, 0.5 credit, grades 9-12

The first part of the course will focus on building keyboarding accuracy. The second half of the course will focus on using computer technologies to perform a variety of functions such as problem solving, researching, and creating documents and presentations. Exploring Technology is *recommended* after this course.

TGG1400 Exploring Technology, global elective 2nd Semester Course, 0.5 credit, grades 9-12

Students will develop a basic understanding of the role that technology plays in society. Emphasis will be on further development of ethical technological skills (computers, iPad, phone, etc. that are valuable in high school, college, or the workplace. Tools for the Information Age is *recommended* prior to this course.

TBU3020 Business & Personal Law, grades 11-12

This second year course covers legal topics that affect everyday activities encountered in society. Topics relating to consumers, minors, businesses, contracts/documents, crimes and torts will be covered. Student activities include: case studies, current events, field trips, mock trials, and guest speakers.

ARTS & COMMUNICATION					
PROGRAM OF STUDY	SUBJECT	9 th Grade	10 th Grade	11 th Grade	12 th Grade
	LANGUAGE ARTS	English LA 9	English LA 10	English LA 11 or AP English Language	English LA 12 AP English Literature
	MATH	Algebra 1 or Geometry	Geometry, MOW2, or Algebra 2	Next Level Math Course	Next Level Math Course or Global Elective
	SCIENCE	Integrated Science	Biology	Science Elective	Science Elective or Global Elective
	SOCIAL STUDIES	U.S. History	World History	Modern Hist. of HI / Part. In a Democracy	Senior Social Studies Elective
DIGITAL MEDIA	CTE	Freshman Seminar	Arts & Communication Core	Digital Media Tech	Broadcasting
FASHION DESIGN				Fashion Design 1	Fashion Design 2
GRAPHIC DESIGN				Graphic Tech 1	Graphic Tech 2
	ELECTIVE / OTHER	Global Elective	PE Lifetime Fitness/ PE Lifetime Activities	Global Elective	Global Elective
	ELECTIVE / OTHER	Global Elective	Global Elective	Global Elective	Global Elective

TAC2010 Arts and Communication Pathway Core

This first year course is designed for students who plan to pursue careers in the Arts and Communication Career Pathway. Students will be introduced to basic concepts in Visual, Fashion, Performing, Written, and Media Arts. The following concepts will be covered: 1) Aesthetics, 2) Creativity, 3) Culture, 4) Current Technology, 5) Customer Service, 6) Legal/Ethics, 7) Management, 8) Impact of Media, and 9) Safety.

TAU2210 Digital Media 1

This second year course is designed to give students the fundamental skills required for graphic design and video production. Graphic design topics will include brochures, logos, business cards, advertisements, and portfolios. Video production topics include building, refining, and completing a rough-cut, and adding effects and finishing. Students will have the opportunity to create portfolios of their work for later use in the industry. **Prerequisite: Arts & Communication Pathway Core**

TAN2115 Broadcast Media

This third year course is designed to give students hands-on opportunities in television news production. Through a variety of production experiences students will learn the power of the medium, examine issues of fairness and objectivity, making critical thinking decisions on a regular basis, exercise creativity, and gain an overall understanding of news gathering and reporting techniques to produce news stories for targeted clients.

Prerequisite: "C" or better in Digital Media 1

TAU2310 Fashion Design 1

This second year course is to provide students with the foundation to design and create garments. This includes the history of fashion, trend forecasting, the fashion cycle, as well as an understanding of textiles. Students will learn elements and principles of design to illustrate their designs and produce them through pattern making and manipulation, and garment construction. **Students must be able to provide own fabric & sewing supplies.**

Prerequisite: Arts & Communication Pathway Core

TAN2300 Fashion Design 2

This third year course provides a more in depth look into the fashion industry and clothing design. Students design for and produce a fashion show or virtual enterprise. **Students must be able to provide own fabric & sewing supplies. Prerequisite: "C" or better in Fashion Design I.**

TAU2124 Graphic Design Technology 1

This second year course provides classroom and laboratory experiences in the major areas of graphic design and production. This course includes the study of the fundamentals of elements and principles of design, colors, layering, layout, photography concepts, plagiarism, advertising, and production techniques. Emphasis is on the creation of designs and products that meet specifications of clients and industry. **Lab Fee required. Prerequisite: Arts & Communication Pathway Core**

TAN2400 Graphic Design Technology 2

This third year course provides advanced classroom and laboratory experiences in the major areas of graphic design and production. This course includes an in depth study of the elements and principles of design, layout, photography, legal and ethical issues, advertising, and production techniques. Emphasis is on the creation of refined and targeted designs that serve a defined purpose and audience identified in project based learning. **Lab Fee required. Prerequisite: Must have earned a "C" or better in Graphic Design Technology 1.**

CORE COURSES & GLOBAL ELECTIVES

ENGLISH LANGUAGE ARTS

The Common Core State Standards (CCSS) four standards of English Language Arts — reading, writing, speaking & listening, and language — will be integrated into each course to provide students with a balanced English program. All students must meet all minimum requirements (reading, writing, speaking & listening, and language) set for each section before being promoted to the next English phase.

The department will continue to group students homogeneously (when appropriate and/or available) in Advanced Placement (AP) and Honors, and Reading Lab sections (the Reading Labs are for grades 11 and 12 only and if available). The student's present English teacher will determine the level placement for the next English phase. If a student or parent does not concur with the teacher's assessment, the student must undergo a re-evaluation during a specified period. If a student fails to be reassessed during this designated time, the student must abide by the teacher's original placement. **Students are required to purchase their own workbooks, composition tablets, and other supplemental readings.**

The English department strongly discourages students from taking English during the summer for enrichment or advancement reasons. As a summer offering, English is primarily a remedial course.

ENGLISH LANGUAGE ARTS 1 (LCY1010)

This course stresses an understanding of various forms of texts. In addition, writing skills will be developed with assignments that require writing for a particular purpose and audience. A more mature writing style will also be encouraged through a study of language structure and techniques in generating and combining sentences. One formal speech is required.

ENGLISH LANGUAGE ARTS 1 HONORS (LCY1010H)

In addition to the objectives and standards covered in the English Language Arts 1 class, students will experience an accelerated and rigorous version as they explore advanced skills in researching, writing, and speaking. Students are expected to complete additional and required summer readings and activities outside of the classroom. There is an inter-disciplinary project during this course. The use of technology will be an essential component through the use of presentation projects and computer programs.

ENGLISH LANGUAGE ARTS 2 (LCY2010)

The primary focus for 10th grade English is **Cultural Literacy**. Through the exposure of diverse literature, the students will attempt to gain multiple perspectives and an appreciation for cultural understanding and awareness through the recognition of literature as a reflection of beliefs, values and traditions. Along with the exposure to this type of literature, the students will also focus on continuing to increase their knowledge of literary elements, vocabulary, grammar, research, writing, and oral communication skills. ELA 2 is both a lot faster paced and contains more rigorous coursework than ninth grade. Therefore, the students will be encouraged and expected to manage their time more wisely, maintain an organizational system for their assignments, and put more effort into this course.

ENGLISH LANGUAGE ARTS 2 HONORS (LCY2010H)

In addition to the objectives and standards covered in the English Language Arts 2 class, students will experience an accelerated and rigorous version as they explore advanced skills in researching, writing, and speaking. Students are expected to complete additional and required summer readings and activities outside of the classroom. The use of technology will be an essential component through the use of presentation projects and computer programs. Whether your freshman English class was traditional or Honors, be prepared to step things up a notch as you move into Honors English 10. This course will focus on developing in you the in-depth reading and analytical writing skills to confidently take the next steps toward the AP Language and AP Literature courses offered to you as upperclassmen, as well as expose you to a wide variety of literature and readings.

ENGLISH LANGUAGE ARTS 3 (LCY3010)

This course provides a balanced program of reading, writing, and oral communication. All of the eleventh-grade benchmarks are addressed in this course. Students learn to become strategic users of the language processes by developing knowledge of specific strategies within these processes and implementing and evaluating the effectiveness of their choice of strategies. Students work with both informational and literary texts. The study of informational texts requires that students conduct research, extract and construct meaning, and complete tasks. The study of literature gives students an opportunity to read, interpret, and respond to literature personally and critically. Selections are not restricted to British and American authors and include the writings of minorities and other cultures. The study of language includes both the description of language and its role in communication as well as the construction of meaning.

ADVANCED PLACEMENT (AP) ENGLISH: LANGUAGE AND COMPOSITION (LAY6010)

This course engages students in becoming skilled readers of prose written in a range of periods, disciplines, and rhetorical contexts, in becoming skilled writers who compose for a variety of purposes. All language arts benchmarks are addressed in this course. Students read primary and secondary source material and synthesize what they have read in expository, analytical, and argumentative writing of the kind that is expected in college. The Advanced Placement Exam for college credit is a suggested option at an approximate cost of \$86.

ENGLISH LANGUAGE ARTS 4 (LCY4010)

This course stresses selections from British literature including Beowulf, Chaucer, Shakespeare, Milton, the 16th-18th century writers, the Romantics, Victorians, and moderns. Relevant terminology (imagery, symbolism, tone, style, etc.) will be covered. Essays that analyze the structure of literary works and literary elements will be written. This course includes objectives of English Language Arts 3.

ADVANCED PLACEMENT (AP) ENGLISH: LITERATURE AND COMPOSITION (LAY6100)

This course engages students in the careful reading and critical analysis of literary texts. All language arts benchmarks are addressed in this course. Students read representative works from various genres and periods, concentrating on works of recognized literary merit. In discussions and in their writing, students' experience, interpret, and evaluate what they have read. Readings include but are not limited to the following: *Hamlet*, *The Canterbury Tales*, *Paradise Lost*, *Moby Dick*, and *A Portrait of an Artist as a Young Man*. They will learn to use modes of discourse and to recognize the assumptions underlying rhetorical strategies. Through discussing, listening, reading, but chiefly through the experience of their own writing, students will become more aware of language. Students will pay for supplemental reading and all field trips. The Advanced Placement Exam for college credit is a suggested option at an approximate cost of \$86.

ENGLISH GLOBAL ELECTIVES

The following courses are English electives and may NOT be used for English credit requirement.

BEGINNING ACTING (FTA1300)

This introductory course emphasizes the development of the students' ability to express themselves freely, the establishment of personal criteria for critical evaluation of drama activities, and the exposure to the theater through the study of various phases of play production. The latter portion of the class focuses on creative dramatics, improvisations, performance of short scenes, playwriting, and singing.

INTERMEDIATE ACTING (FTA2000)

Body and vocal exercises are continued with emphasis on some basic acting principles. State business and movement, pointers on characterizations, interpretation and analysis of roles, and vocal and emotional projection are taught. Students are given opportunities for practice, guidance, and training in these areas and perform in directed class scenes. Exercises in sensory awareness and concentration are also continued. The course further emphasizes learning discipline and concentration in the art of acting. Work in freeing the body and vocal projection is continued with more intensive work on special acting techniques. Timing and pacing are studied and practiced through improvisations and performing scenes from various plays. Character, line, and play analysis are integral parts of this course. Students are expected to try out for school and community plays. Prerequisite: Beginning Acting

ADVANCED ACTING (FTA3000)

This course emphasizes learning discipline and concentration in the art of acting. Work in freeing the body and vocal projection are continued with more intensive work on special acting techniques. Characterization; physical, vocal, and emotional projections; timing; and pacing are studied and practiced through improvisations and performing scenes from various plays. Character, line, and play analysis are integral parts of this course. Students are expected to audition for school and community plays. Prerequisite: Advanced Acting

DIRECTED STUDY IN DRAMA AND THEATER (FTD1000)

This course is provided to meet the unique interest and skills of students through independent or small group study. The instructor will select drama standards appropriate for students and may integrate other Fine Arts standards. Prerequisite: Advanced Acting

JOURNAL WRITING/PUBLISHING (LWY5250)

This class will explore the importance of journalism as a viable career in today's modern world. Students will focus on writing, editing with computers, learning word processing and layout techniques as well as graphics, photography and blogging. As students advance, they will contribute directly to the production of an online school newspaper where they will be given the opportunity to create a format, which may include current events, local activities, and student voice.

YEARBOOK PRODUCTION 1, 2 (XYY8610, XYY8630)

Students will assume specific responsibilities based on interests and performance. Work will involve planning, designing layouts & cover, identifying and developing a theme, planning the sales campaign, and distribution. Computer skills will be utilized for record keeping and data entry, as well as for word processing and layout design using online software. Some after school, weekend, and holiday work is involved. Students must have the yearbook instructor's approval.

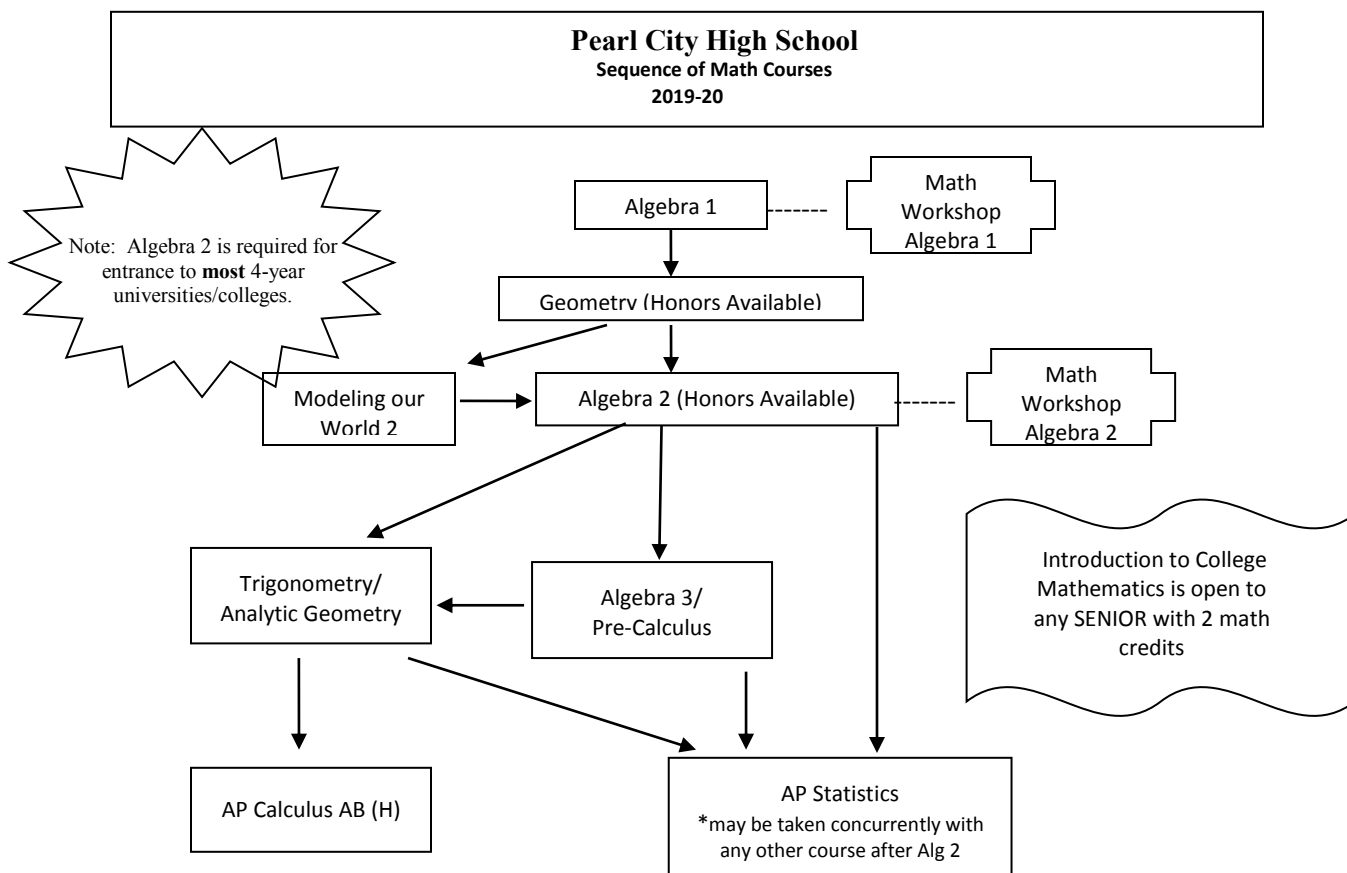
YEARBOOK PRODUCTION 3, 4 (XYY8650, XYY8630)

Students will plan, schedule, and supervise other students. They will edit and check the final material to be submitted to the plant. Students must have the yearbook instructor's approval.

MATHEMATICS

PCHS has a variety of offerings in mathematics to aid students in gaining their three math credits required for graduation. The flowchart below details the sequence of courses that students may take to gain these credits. Students who are not presently enrolled in a math course are to see the Math Department Chairperson in D202 and all others should consult with their present math teacher to choose a course of study that will best meet their needs. Also, students should follow up with colleges to determine which courses above Algebra 2 are considered to be higher level math courses.

> **The Mathematics Department strongly discourages students from taking Algebra 1 or Algebra 2 during the summer for advancement. Algebra 1 and Algebra 2 are offered during the summer for those who have failed during the regular school year.** <



ALGEBRA 1 (MAX1155)

Content of this course focuses on modeling with functions, linear functions, quadratic functions, solving equations and inequalities in two variables (including systems of equations), and analyzing bivariate data to identify and explain apparent relationships. Learning opportunities will support students to understand and describe symbolic, graphical, numeric (tabular) and verbal representations of important mathematical ideas. Conceptual understanding, fluency with procedures and skills, and application of knowledge will be emphasized throughout the course. All Algebra 1 students are required to take the state End-Of-Course Exam that will be worth 15 percent of the student’s final grade. (Prerequisite and/or Approval: 8th Grade Math and approval of 8th Grade math teacher)

MATHEMATICS WORKSHOP – ALGEBRA 1 (MSW1009A/MSW1009B)

This course is designed for students that need to reinforce and strengthen their understanding of mathematical concepts in Algebra 1. (Prerequisite and/or Approval: Taken concurrently with Algebra 1 course and approval of present math teacher)

➔ **This course is an ELECTIVE credit and NOT a math credit!** ⚡

GEOMETRY (MGX1150)

This course emphasizes the understanding and use of relationships among points, lines, and figures. These include properties of various figures; relations among lines such as parallelism, intersections, concurrence and perpendicularity; and relations among figures such as congruence, similarity, symmetry and rigid motions. This course also includes deductive reasoning, right triangle relationships, trigonometric ratios, circle relationships, constructions, areas and volumes of three-dimensional figures, coordinate geometry, and transformations. A compass, ruler, protractor and graph paper are required. Students are encouraged to use a scientific calculator, TI-30 series is recommended. (Prerequisite and/or Approval: Algebra 1 and approval of present math instructor)

MODELING OUR WORLD 2 (MAX1180)

In this course, students build mathematical models of real-world applications, using a functions approach that imparts a deeper grasp of the concepts and enables them to see their world from a mathematical perspective. In doing so, they will also reinforce their algebra and geometry skills. For students that leave Algebra I with an unstable foundation in algebraic thinking, this reinforcement helps to clarify their mathematical understanding and empowers them for success in Algebra II. (Prerequisite and/or Approval: Algebra 1, Geometry, and approval of present math instructor)

ALGEBRA 2 (MAX1200)

The Algebra 2 course extends the algebraic skills and knowledge developed in Algebra 1 by exploring the real number system in greater depth, providing exposure to various algebraic techniques, and developing the concept of function, including graphing techniques and inverse functions. This course includes the following topics: quadratic relations and systems, polynomial equations, exponents and logarithms, sequences and series, and permutations and combinations. All Algebra 2 students are required to take the state End-Of-Course Exam that will be worth 15 percent of the student's final grade. (Prerequisite and/or Approval: Algebra 1, Geometry, and approval of present math instructor)

MATHEMATICS WORKSHOP – ALGEBRA 2 (MSW1011A/MSW1011B)

This course is designed for students that struggle in math and need to strengthen their understanding of concepts in Algebra 2. (Prerequisite and/or Approval: Taken concurrently with Algebra 2 course and approval of present math teacher)

→ This course is an ELECTIVE credit and NOT a math credit! ←

AP STATISTICS (MCX1050)

AP Statistics introduces major concepts and tools for collecting, analyzing, and drawing conclusions from data. Students are exposed to four broad conceptual themes: exploring data, planning a study, anticipating patterns, and making statistical inferences. At the end of the year, all students are expected to pay for and take the AP Statistics examination. Additional details will be given by the AP teacher. A graphing calculator is required; Texas Instruments TI-83 or TI-84 is highly recommended. (Prerequisite and/or Approval: Algebra 1, Geometry, Algebra 2, and approval of present math instructor; may be taken concurrently with any other math course after Algebra 2)

Mathematics Workshop - AP Statistics (MSW1012AP1/MSW1012AP2)

This elective course is designed to support the AP Statistics curriculum. Students will have the additional time to reinforce and strengthen their understanding of the interactive and investigative aspects of data analysis. Important components of AP Statistics should include the use of technology, projects and laboratories, cooperative group problem-solving, and writing, as a part of concept-oriented instruction and assessment. This approach to teaching AP Statistics will allow students to build interdisciplinary connections with other subjects and with their world outside school. (The College Board)

Prerequisite: Taken concurrently with the AP Statistics course

→ This course is an ELECTIVE credit and NOT a math credit! ←

INTRODUCTION TO COLLEGE MATHEMATICS (MIC1200)

This course prepares students for any non-STEM college level math. Introduction to College Mathematics will focus upon topics from the Algebra, Functions, Geometry and Statistics domains of the Common Core State Standards with an emphasis on mathematical modeling and quantitative reasoning. Students will extend their understanding of high school mathematics concepts and apply that understanding in real-world problem solving situations and in purely mathematical contexts. (Prerequisite and/or Approval: This course is open to any senior with two math credits)

ALGEBRA 3 / PRE-CALCULUS (MAX1310/MCX1020)

This course is designed to strengthen algebraic concepts and skills from Algebra 2 and incorporates the appropriate use of technology. Content includes linear, polynomial, power, rational, exponential, logistic, logarithmic, trigonometric, parametric, and polar functions. Other topics include inequalities, modeling, real and complex numbers, vectors, and matrices. Summer homework may be expected to be done by the students before the 1st day of school. Students are expected to acquire and use a graphing calculator (TI-83 Plus or TI-84) throughout the course. (Prerequisite and/or Approval: Algebra 1, Geometry, Algebra 2, and approval of present math instructor)

TRIGONOMETRY / ANALYTIC GEOMETRY (MCX1010/MCX1030)

This course is for highly motivated students who are selected to enroll in this course by their Algebra 2 teacher. Topics in Trigonometry include trigonometric functions, fundamental identities & their proofs, trigonometric equations, inverse trigonometric functions, applications including vectors, trigonometric and polar forms of complex numbers and DeMoivre's Theorem. Topics in Analytic Geometry include the study of rectangular and polar coordinates, curve sketching, conics, parametric equations and an introduction to vectors, including the dot product. Students are expected to acquire and use a graphing calculator (TI-83 Plus or TI-84) throughout the course. (Prerequisite and/or Approval: Algebra 1, Geometry, "A" in Algebra 2, and approval of present math instructor)

ADVANCED PLACEMENT (AP) CALCULUS AB (MCA1040)

This course is an AP Calculus course that is comparable to one semester of a college-level course in differential and integral calculus. Students are expected to have strong backgrounds in Algebra, Geometry and Trigonometry. Topics include those recommended by the AP program of the College Board and elementary functions. A graphing calculator (TI-83 Plus or TI-84) is required. At the end of the year, all students are expected to pay for and take the AP Calculus examination. Additional details will be given by the AP teacher. (Prerequisite and/or Approval: Algebra 1, Geometry, Algebra 2, Trigonometry/Analytic Geometry, and approval of present math instructor)

For Seniors interested in pursuing a STEM Honors Recognition Certificate:

XAT1000 STEM Capstone, grade 12

This course is required for any student wishing to earn STEM Honors. The course is self-directed and project based. Students are expected to demonstrate skilled or masterful levels for all STEM Competencies as they address the following major outcomes for the course:

Research: Conduct research to reflect upon and determine a project to addresses a specific community need.

Design: Design, build, test, refine, and deliver a solution to address the need.

Reflection: Engage in ongoing reflection throughout all levels of the project design and its impacts on the local and global community.

Technology: Learn to use technologies with the aid of online self-guided tutorials, student mentoring, and/or professional assistance arranged by the course facilitator. Accessible technology may include, but is not limited to; probe-ware, biotechnology, bio-agricultural systems, computer-aided design, 3-D modeling, architectural design, animation, games design, surveying and mapping (GPS), Geographic Information Systems, programming, database applications, web page design, digital photo and video editing.

Career Skills: Acquire career-building skills. Skills include reflection on and integration of personal values with career interests, strategic resume development, and enhancing job search capability.

Project-based learning experiences will specifically address skills with STEM fields. Successful projects will integrate the practice and development of specific skills from all four areas -- Science, Technology, Engineering Design, and Mathematics. STEM Capstone projects will address all four areas of STEM and will directly reflect meet or exceed levels of all STEM Competencies. **This course is required for students interested in pursuing a STEM Honors certificate.**

Note: Class of 2020 and 2021 students can also satisfy the STEM Capstone course requirement through Program of Study sequenced enrollment in Cybersecurity, Natural Resources Pathway Capstone, Engineering Technology II, Design Technology II, Building & Construction II, and Health Services Pathway Capstone courses.

SCIENCE

The Pearl City High School Science Department offers students the opportunity to learn how to use the scientific process to acquire, integrate, extend, and apply scientific knowledge to a wide array of fields. Students learn how to identify problems, ask questions, perform experiments, analyze data, think critically, and draw conclusions. Students are provided the opportunity to develop an understanding of the basic concepts of physical and life sciences in our college-preparatory program.

While three credits are required of all students for graduation, the Science Department strongly recommends that students take four credits of science coursework. To meet the wide range of abilities and interests of Pearl City High School students, the department offers Advanced Placement courses, as well as essential courses that emphasize an investigative approach with a lesser mathematical emphasis.

AP BIOLOGY (SLH8003), Grade 12

AP Biology is for the highly motivated student with a strong interest in the rapidly changing field of Biology. AP Biology offers the foundational knowledge, lab and inquiry experience of an introductory college-level Biology course. This course has been redesigned to meet the College Board curricular requirements, which emphasize the Four Big Ideas – Evolution, Cellular Processes, Genetics and Information Transfer, and Ecology. All AP students are expected to take their respective course's College Board AP exam in May at an approximate cost of \$91. This course is graded on a 5.0 scale if you take the AP exam.

A scientific calculator is required. A \$10 lab fee will be assessed. Prerequisite: Completion of Chemistry with B or better. Approval of K. Russel (A-402).

AP CHEMISTRY (SPH5003), Grade 12

*** Concurrent enrollment in Directed Studies in Science (SAH3503C) is required for this course.**

This course is an equivalent of the general chemistry course usually taken during the first college year and helps to prepare students for the AP exam. The laboratory experience is equivalent to that of a typical college-level course in chemistry. Emphasis is on mathematical formulation of principles and laboratory activities based on experimental problems and independent study. Concepts and principles studied in depth include atomic theory and structure, chemical bonding, nuclear chemistry, gases, liquids and solids, solutions, stoichiometry, reaction types, equilibrium, kinetics, thermodynamic relations, and chemical calculations. All AP students are expected to take their respective course's College Board AP exam in May at an approximate cost of \$91. This course is graded on a 5.0 scale if you take the AP exam. **A scientific calculator is required. A \$10 lab fee will be assessed. Prerequisite: Completion of Chemistry with B or better. Approval of A. Ferro (L-402).**

AP CHEMISTRY LAB (Directed Studies SAH3503C)

***Concurrent enrollment in AP Chemistry**

This course is designed to be an extension of the AP Chemistry course. At least 16 laboratory experiments will be conducted; six of which will be inquiry bases. Students will ask questions, make observations and predictions, design experiments, analyze data, and construct arguments in a collaborative setting. These experiments will give the students an opportunity to learn laboratory safety, common laboratory techniques, and proper laboratory reporting that will prepare students for college. This class will be on a 4.0 scale.

AP PHYSICS 1: ALG-BASED (SPH7505), Grade 12

*** Concurrent enrollment in Directed Studies in Science (SAH3503P) is required for this course.**

This course is an algebra-based, college level physics course that explores topics such as Newtonian Mechanics (including rotational motion); work, energy, and power; mechanical waves and sound; and electrical circuits. Through inquiry-based learning, students will develop scientific critical thinking and reasoning skills. Students should be proficient in Geometry and Algebra II. All AP students are expected to take their respective course's College Board AP exam in May at an approximate cost of \$91. Completion of summer homework is required. This course is graded on a 5.0 scale if you take the AP exam. **A scientific calculator is required. A \$10 lab fee will be assessed. Prerequisite: Concurrent enrollment in or completion of Algebra III/Trigonometry with B or better. Approval of S. Finder (L-302)**

AP PHYSICS LAB (Directed Studies SAH3503P)

*Concurrent enrollment in AP Physics.

This course is designed to be an extension of the AP Physics course. AP Physics curricular requirements now include extensive lab experience including inquiry labs throughout the school year. College Board has a minimum of 16 required labs, several additional recommended labs, and six required inquiry labs. While a regular Physics lab may take a single long period to complete, AP inquiry labs are accompanied by pre-lab activities for preparation and post-lab activities, such as data analysis, which may mean that a lab may take even longer to complete. This class will be on a 4.0 scale.

BIOLOGY (SLH2203), Grade 10 required

This college-preparatory course enables students to gain an understanding of the connection between biology and real life. Students will build critical-thinking skills that will help them to make decisions and solve problems in our constantly changing world. Topics to be covered: cell structure and function, genetics, ecology, classification and characteristics of organisms, and human structure and function. All Biology students are expected to take the statewide End-of-Course exam in the spring. **A \$10 lab fee will be assessed.**

BIOLOGY HONORS (SLH2203H), Grade 10 with Teacher Recommendation

Designed for students expecting to attend competitive universities and/or planning on careers in life science especially in the fields of bioethics, genetics, bioengineering, zoology, environmental engineering, conservation biology, veterinary medicine, ecology, and ethology. Concepts and principles studied in-depth include: biochemistry, cell structure and function, cellular transport mechanisms, photosynthesis, respiration, genetics, animal physiology (with an emphasis on invertebrates), and ecology. All Biology students are expected to take the statewide End-of-Course exam in the spring. **A \$10 lab fee will be assessed.**

CHEMISTRY (SPH3503), Grade 11 or 12

This is a college-preparatory course designed for students planning to major in a non-science related field. The course combines the theories and concepts of chemistry with practical applications and problems. This course involves the study of matter, chemical formulas, moles, chemical equations, atomic structure, electron clouds, periodic table trends, and chemical bonding. Laboratory activities lead the student to discover important chemical relationships. **A scientific calculator is required. A \$10 lab fee will be assessed. Prerequisite: Completion of Biology with C or better. Completion of Algebra I with a C or better. Approval of current science instructor.**

CHEMISTRY HONORS (SPH3503H), Grade 11 or 12

This is a college-preparatory course designed to develop the basic concepts of chemistry through laboratory investigations. The course is highly quantitative in its approach and focuses on the theories and principles of chemistry such as the atomic theory, chemical reactions, kinetic theory, rate and equilibrium, acid-base behavior, oxidation-reduction, and chemical bonding. **Prerequisite: Completion of Biology with B or better. Concurrent enrollment in or completion of Algebra II. Approval of current science instructor. A scientific calculator is required. A \$10 lab fee will be assessed.**

HUMAN PHYSIOLOGY (SLH7503), Grade 11 or 12

This course is designed to provide students with an understanding of the function and regulation of the human body and physiological integration of the organ systems to maintain homeostasis. Course content will include biochemistry, neural and hormonal homeostatic control mechanisms, as well as study of the musculoskeletal, circulatory, respiratory, digestive, urinary, lymphatic, integumentary, reproductive, and endocrine organ systems. **A \$10 lab fee will be assessed.**

Prerequisite: Completion of Biology with C or better. Approval of current science instructor or C. Shishido (A-202).

MARINE SCIENCE (SEH2503), Grade 10, 11, or 12

Marine Science is a course that will provide a foundation in oceanography and marine biology. The science of understanding Earth's oceans integrates basic scientific concepts and principles of geography, geology, chemistry, physics and biology. Lesson topics include formation of Earth and its oceans, plate tectonics, distribution of sediments, properties of seawater, ocean currents, marine ecology/habitats and environmental issues. **A \$10 lab fee will be assessed.**

INTEGRATED SCIENCE (SAH2003), Grade 9 Required

This is an introductory high school science course focused on scientific inquiry and practices, with a specific focus on preparing students for future high school science courses. Students will be provided with extended opportunities to study issues, topics, and themes in greater depth including, but not limited to, Life and Environmental Sciences, Physical Science, and Earth and Space Sciences. **A scientific calculator is required. A \$10 lab fee will be assessed.**

PHYSICS (SPH5603), Grade 11 or 12

Designed for students expecting to attend competitive universities. This course involves the study of the major concepts and laws of physics, and provides the students with a foundation for understanding at a conceptual level, the natural phenomena, and technological devices encountered in every day experience. Physics will include a study of motion and Newton's Laws, momentum and energy, the structure of matter, thermodynamics, wave motion, electromagnetism, light, relativity, and the quantum nature of the atomic and subatomic world. **A scientific calculator is required. A \$10 lab fee will be assessed.**

Prerequisite: Concurrent enrollment in or completion of Algebra II. Approval of current science instructor or S. Finder (L-302)For Seniors interested in pursuing a STEM Honors Recognition Certificate:

XAT1000 STEM Capstone, grade 12

This course is required for any student wishing to earn STEM Honors. The course is self-directed and project based. Students are expected to demonstrate skilled or masterful levels for all STEM Competencies as they address the following major outcomes for the course:

Research: Conduct research to reflect upon and determine a project to addresses a specific community need.

Design: Design, build, test, refine, and deliver a solution to address the need.

Reflection: Engage in ongoing reflection throughout all levels of the project design and its impacts on the local and global community.

Technology: Learn to use technologies with the aid of online self-guided tutorials, student mentoring, and/or professional assistance arranged by the course facilitator. Accessible technology may include, but is not limited to; probe-ware, biotechnology, bio-agricultural systems, computer-aided design, 3-D modeling, architectural design, animation, games design, surveying and mapping (GPS), Geographic Information Systems, programming, database applications, web page design, digital photo and video editing.

Career Skills: Acquire career-building skills. Skills include reflection on and integration of personal values with career interests, strategic resume development, and enhancing job search capability.

Project-based learning experiences will specifically address skills with STEM fields. Successful projects will integrate the practice and development of specific skills from all four areas -- Science, Technology, Engineering Design, and Mathematics. STEM Capstone projects will address all four areas of STEM and will directly reflect meet or exceed levels of all STEM Competencies. **This course is required for students interested in pursuing a STEM Honors certificate.**

Note: Class of 2020 and 2021 students can also satisfy the STEM Capstone course requirement through Program of Study sequenced enrollment in Cybersecurity, Natural Resources Pathway Capstone, Engineering Technology II, Design Technology II, Building & Construction II, and Health Services Pathway Capstone courses.

SOCIAL STUDIES

- Grade 9: U.S. History & Government
- Grade 10: World History and Culture
- Grade 11: Modern History of Hawaii/Participation in Democracy
- Grade 12: Psychology/Sociology
Economics/American Problems
Anthropology/Geography
Hawaiian Studies/Pacific Island Cultures
AP Psychology

US HISTORY AND GOVERNMENT (CHU1100)

This course is a study of the historical development of the U.S. focusing on the people and events that have shaped the growth of the nation. Topics include immigration, urbanization, Progressivism, Imperialism, World War I, the Jazz Age, the Great Depression, the New Deal, World War II, the Cold War, the post-Cold War era, and the United States at the beginning of the twenty-first century. **Grade 9.**

US HISTORY AND GOVERNMENT HONORS (CHU1100H)

The Honors course includes the U.S. History and Government content with emphasis placed on analysis and interpretation of primary source documents. Students are required to participate in Hawaii History Day. **Grade 9.**

WORLD HISTORY AND CULTURE (CHW1100)

This course is a study of the historical development of the world focusing on major western civilizations and selected cultures from around the world that have contributed to the development of modern cultures. **Grade 10.**

WORLD HISTORY AND CULTURE HONORS (CHW1100H)

This project-based, college preparatory course focuses on the study of the historical development of the world. The social, political, intellectual, cultural, and economic effects of major cultures, civilizations, and world events will be included. **Grade 10.**

PARTICIPATION IN A DEMOCRACY/MODERN HAWAIIAN HISTORY (CGU1100/CHR1100)

This course integrates the study of the history of modern Hawaii with the study of American government and the citizen's role in the democratic process. The emphasis will be on the process of government, how it is related to the social, economic, physical environment and the rights, responsibilities and roles of a citizen. This course is a Social Studies graduation requirement. **Grade 11.**

ANTHROPOLOGY (CSD2400)

Anthropology covers the approaches to studying mankind, gathering evidence, genetics and evolution, the emergence of primates up to modern humans, as well as early development of culture and civilization.

GEOGRAPHY (CSD2100)

A study of physical and cultural geography. It emphasizes how the natural environment is related to and affects people and society. Particular attention is focused upon the role and importance of Geography in present world community affairs.

ECONOMICS (CSD2500)

This course develops the economic concepts and analytical tools necessary to understand the major economic problems confronting individuals, the nation and the world today. It emphasizes a way of thinking about economic issues using relevant factual and institutional information and applying these to understand significant problems. Students will see how economic principles affect their current and future lives. Students will participate in a Junior Achievement Applied Economics program. A school-to-work/career theme is included.

AMERICAN PROBLEMS (CGU2200)

American Problems focuses on selected issues and problems affecting American society in contemporary times. The course emphasizes problem solving and decision making. Topics include, but are not limited to, global warming, stem cell research, bankruptcy, and America's political and economic involvement around the world. Students will investigate topics that interest them within the scope of problems facing our country and its citizens.

PSYCHOLOGY (CSD2200)

This is a study of behavior to help students gain insight into the behavior of other individuals and groups, as well as to equip them to effectively understand their behavior. Some topics covered are: history of psychology, research methods, learning, psychological disorders and therapies.

SOCIOLOGY (CSD2100)

Sociology is the scientific study of human society and social behavior. Some topics covered are: social organization, sociologist perspectives, cultural diversity, socializing the individual, deviance and social control, racial and ethnic relations, gender, age and health.

HAWAIIAN STUDIES (CER2200)

A study of the Hawaiian people and the unique contributions made by them to the culture of contemporary Hawaii. Attention is focused on an in-depth study of the origins of the Hawaiian people and the culture of the ancient Hawaiians. This course must be taken with History of the Pacific and is open to seniors.

PACIFIC ISLAND CULTURES (CER2300)

This course is designed to offer students insight into the rich heritage of the Pacific Islander. To instill realistic pride, the course introduces the cultural aspects through its history, language, music and arts. This course must be taken with Hawaiian Studies and is open to seniors.

AP PSYCHOLOGY (CSA2300/CSA2400)

The aim of this course is to provide the student with a learning experience equivalent to that obtained in most college introductory psychology courses. Students learn some of the explorations and discoveries made by psychologists over the centuries. They also assess the differing approaches adopted by psychologists, including the biological, behavioral, cognitive, humanistic, psychodynamic, and socio-cultural perspectives. Specific topics may include methodology, behaviorism, neuroscience, sensation and perception, developmental psychology, and intelligence and psychological testing. **Must see AP instructor for approval.**

CAREER & TECHNICAL EDUCATION (CTE)

The following CTE global electives can be taken by grade levels listed below:

Grade 9 & 10

TOOLS FOR THE INFORMATION AGE / EXPLORING TECHNOLOGY (see page 22 for course description)

Grades 11 & 12

ARTS & COMMUNICATION PATHWAY CORE (page 23)

BUILDING & CONSTRUCTION 1 (page 16)

BUSINESS LAW (page 22)

BUSINESS MANAGEMENT/TECHNOLOGY CORE (page 21)

CULINARY 1 (page 18)

DESIGN TECH 1 (page 16)

ENGINEERING TECH 1 (page16)

EXPLORATIONS IN EDUCATION (page19)

HEALTH SERVICES PATHWAY CORE (page 20)

HOSPITALITY & TOURISM (page 19)

NATURAL RESOURCES PATHWAY CORE (page 17)

NETWORKING FUNDAMENTALS & LAN (page16)

TOOLS FOR THE INFORMATION AGE / EXPLORING TECHNOLOGY (page 22)

HEALTH & PHYSICAL EDUCATION

- Create your cutting edge to looking good and feeling good!
- Formulate your foundation to Career and College readiness
- Experience practical, real life applications of knowledge and skills with fun and challenging projects.
- Choose your direction and degree of challenge.

GRADUATION REQUIREMENTS

HEALTH TODAY AND TOMORROW, (HLE1000), 1 semester – REQUIRED for Graduation

Course covers understanding concepts of making proper choices in addressing Risky Behaviors, Decision-Making and Problem, Accessing Information, Internal and External Influences, Advocacy, Self-Management, Interpersonal Communication, HCPSIII HEALTH Standards. Students in this course develop and practice skills that will promote and protect the health of self and others. Students engage in in-depth discussion and exploration of current issues and health trends for teens.

PHYSICAL EDUCATION LIFETIME FITNESS (PEP1005), 1 semester - REQUIRED for Graduation

Course focuses on developing health-related personal fitness by exposing students to a wide variety of fitness sources and modalities. Course should empower learners to actualize a vision of themselves as competent movers with the skills, knowledge, and desire to become life-long participants in fitness and wellness. Course meets HCPSIII Physical Education Standards and Benchmarks, grade 10.

PHYSICAL EDUCATION LIFETIME ACTIVITIES (PEP1010), semester course - REQUIRED for Graduation

Course develops and strengthens skill-related physical movement forms, concepts, and principles through a variety of fitness and sports experiences. Course should empower learner to actualize a vision of themselves as competent movers with activity and skills-related fitness, knowledge, and desire to become life-long participants in sports or skill related fitness and wellness. Course meets HCPS III Physical Education Standards and Benchmarks, grade 10.

PHYSICAL EDUCATION GLOBAL ELECTIVES

PHYSICAL FITNESS FOR LIFE (PFP1310/1320; PFP1330/1340), semester courses, APPROVAL REQUIRED

Course designed to emphasize higher level fitness and strength development in Health and Skill-related Fitness. Course is project-based, emphasizing leadership and uses dynamic body weight as well and resistance training modalities. Pre-requisite: Completed Physical Education Lifetime Fitness requirement for graduation. Recommended: Completion of Weight and Resistance Training, 1A1B. **Instructor approval (K. Bicoy, GLR) required.** (Grade 11-12)

WEIGHT & RESISTANCE TRAINING 1A/1B (PWP 1210/1220); semester courses

WEIGHT & RESISTANCE TRAINING 2A/2B (PWP 1230/1240), semester courses

Course is designed to emphasize safety, etiquette, body mechanics in movement forms, concepts, and principles through basic skills in weight and resistance training. Course meets HCPSIII Physical Education Standards and Benchmarks. Projects align to Career Pathways and College readiness. Course does not fulfill Physical Education graduation requirement. (Grade 9-12) **Must pass Weight Training 1A/1B with a "C" or better for Weight Training 2A/2B.**

TEAM SPORTS 1 / TEAM SPORTS 2 (PTP 1640, PTP 1650), semester courses

Course is designed to strengthen physical movement forms, concepts, principles, and skills through participation and applications in a variety of team sports. Course meets HCPSIII Physical Education Standards. Projects align to Career Path of Public and Human Services, however, course open to students of all academies. Course does not fulfill Physical Education graduation requirement. (Grade 9-12)

RECREATIONAL LEADERSHIP / TEAM SPORTS 3 (PLP 1710/PTP1660), semester course

INSTRUCTOR APPROVAL REQUIRED.

Course looking for enthusiastic students wanting hands on opportunity in Public and Human Services Career Pathways project applications. (Course open to students of all academies.) Project applications involve: Organizing Sport Activities, Coaching, Officiating, Sport Management, Event Coordination, Sport Skill Workshops and clinics, Wellness Advocacy.

Instructor Approval (M. Pang, BLR) required. (Grade 10-12)

ADVANCED RECREATIONAL LEADERSHIP (INDIVIDUAL & DUAL SPORT 1 / 2 [PIP 1610, PIP 1620], semester courses

INSTRUCTOR APPROVAL REQUIRED.

Course is intended for students in advanced Recreation Leadership. Project applications involve organizing sport activities, coaching, officiating, sport management, event coordination, sport skill workshops and clinics.

Instructor Approval (M. Pang, BLR) required. (Grade 11-12 only)

HAWAIIAN DANCE 1 – 3 (FDK 1000 – FDK3000), year courses

INSTRUCTOR APPROVAL REQUIRED. Course is for experienced dancers of intermediate and advanced level Kahiko and 'Auwana Hula. Courses apply to Fine Arts requirement for graduation and meets HCPSIII Performing Arts Dance Standard and Benchmarks. School and Public Performances, choreography, leadership/dance workshops, costume design/creation, and personal costume making required. Students are responsible for costs of personal costume. Instructor approval (K. Bicoy, GLR) required **(Grade 11-12)**

DIRECTED STUDIES IN HAWAIIAN DANCE (FDD4000), year course

INSTRUCTOR APPROVAL REQUIRED. Course designed for students who completed Hawaiian Dance FDK3000 and are prepared for leadership at the next level. Course is project-based and apply to Fine Arts requirement for graduation, following HCPSIII Performing Arts Dance Standards and Benchmarks. Students are responsible for costs of personal costume Instructor approval (K. Bicoy, GLR) required. **(Grade 11-12)**

POLYNESIAN DANCE 1 – 3 (FDP1000 – FDP3000), year courses

INSTRUCTOR APPROVAL REQUIRED. Course is for experienced dancers of intermediate and advanced level **Tahitian, Samoan, Tongan, Fiji** Dance. Courses apply for Fine Arts requirement for graduation. This course is designed for students interested in performances, choreography, leadership/dance workshops, costume design/creation, and personal costume making required. Students are responsible for costs of personal costume. Instructor approval (K. Bicoy, GLR) required. **(Grade 11-12)**

DIRECTED STUDIES IN POLYNESIAN DANCE (FDD5000), year course

INSTRUCTOR APPROVAL REQUIRED. Course is designed for students who completed Polynesian Dance FDP 3200 and are prepared for leadership at the next level. Projects focus on choreography and production and follow HCPSIII Performing Arts Dance Standards and Benchmarks. Students are responsible for costs of personal costume. Instructor approval (K. Bicoy, GLR) required. **(Grade 11-12)**

FINE ARTS

All Fine Arts courses are Global Electives.

The Art Department offers unique opportunities for all students interested in exercising their imagination and problem solving skills. Students interested in a career in art can take a sequence of courses. People who enjoy using their unique way of thinking find the arts appealing and useful in all areas of life.

Photography 1A/1B (FVP1100/FVP 1200)

This is a beginning course to photography. Basic techniques taught are composition, exposure, lighting, camera care and operation, film processing, contact printing, and enlarging. Darkroom safety procedures are also introduced. This course focuses on Visual Arts Content Standards 1, 5, and 6, while integrating other Fine Arts Standards. Students must have their own 35mm point and shoot film camera and digital camera. **Course lab fee of \$40.00 is required for all students (includes photographic paper and film).**

Photography 2 (FVP2000)

This is an intermediate course covering advanced exposure techniques involving measured and controlled light and time, the use of filters, and film development for specific requirements. Individual projects include experiences in print toning, architectural compositions, and photo for news coverage. Techniques using a SLR/DSLR camera will be covered. This course will introduce the use of digital imaging techniques and strategies. **Prerequisite: Photography 1. Course lab fee of \$40.00 is required for all students (includes photographic paper and film). Teacher approval required.**

Photography 3 (FVP3000)

This is an advanced course that further develops skills and techniques learned in Photography I and II and offers new ideas and techniques utilized in contemporary photography. It is designed to emphasize the use of imaging processes as creative and vital forms of visual communication. Individualized studies will stress experimentation and research in specialized areas of interest such as multimedia presentations. Development of a portfolio of images is strongly encouraged. The instructor is to select Visual Arts Standards appropriate for the student, while integrating other Fine Arts Standards. **Prerequisite: Photography 1 and 2. Course lab fee of \$40.00 is required for all students (includes photographic paper and film). Teacher approval required.**

Directed Study in Art Problems (FVP1000P)

This is a course designed for art students wishing to pursue a degree/career in the visual arts. Opportunity is provided for in-depth study in a selected mode of expression. The student will be required to produce a portfolio of work. **Teacher approval required. Course lab fee of \$40.00 is required for all students (includes photographic paper and film).**

Drawing & Painting 1 (FVQ1000)

In this introductory course students explore a variety of media such as pencil, pastel, charcoal, watercolor, and acrylics with an emphasis on drawing, painting, and design. The study of art history and artists will provide a foundation for students to discuss and evaluate their own work in a supportive atmosphere. **Course fee of \$20.00 is required for all students.**

Drawing & Painting 2 (FVQ2000)

This intermediate course offers students the opportunity to expand on previously learned skills. Students are encouraged to develop thematic concepts for their work. **Prerequisite: Drawing & Painting 1. Teacher approval required. Course fee of \$20.00 is required for all students.**

Drawing & Painting 3 (FVQ3000)

This advanced course offers students the opportunity to self-direct their studies in the field of drawing and painting to expand on previously learned skills. Students are encouraged to take risks with materials, develop thematic concepts for their work, and to self-assess their work. **Prerequisite: Drawing & Painting 2. Teacher approval required. Course fee of \$20.00 is required for all students.**

Directed Study in Art Problems (FVD1000AA)

This is a course designed for art students wishing to pursue a degree/career in the visual arts. Opportunity is provided for in-depth study in a selected mode of expression. The student will be required to produce a portfolio of work.

Teacher approval required. Course fee of \$20.00 is required for all students.

Ceramics 1A/1B (FVL1100/FVL1200)

This is an introductory course that presents clay as a universal medium of expression. Functional and non-functional pieces from diverse cultures are introduced and analyzed. Hand building techniques involving coil, slab, and free form modeling are explored. Glazing techniques and other methods of surface decoration are introduced. **Course fee of \$20.00 is required for all students.**

Ceramics 2 (FVL2000)

This intermediate course offers students the opportunity to expand on previously learned skills. Students are encouraged to develop thematic concepts for their work and to self-assess their work. **Prerequisite: Ceramics 1A/1B. Teacher approval required. Course fee of \$20.00 is required for all students.**

Ceramics 3 (FVL3000)

This advanced course offers students the opportunity to self-direct their studies in the field of ceramics. Students are encouraged to take risks with materials, develop thematic concepts for their work, and to self-assess their work.

Prerequisite: Ceramics 2. Teacher approval required. Course fee of \$20.00 is required for all students.

Directed Study in Art Problems (FVD1000AA)

This is a course designed for art students wishing to pursue a degree/career in the visual arts. Opportunity is provided for in-depth study in a selected mode of expression. The student will be required to produce a portfolio of work. **Teacher approval required. Course fee of \$20.00 is required for all students**

MUSIC

All Music courses are Global Electives.

BAND 1 (FMB2000) Prerequisite: Approval from the lead band director

This course is for students who have had the equivalent of two previous years' experience in a band class. For students who do not fulfill this Prerequisite, acceptance into this course may also be gained through conference and/or audition with the lead band director. This course seeks to develop students in three basic categories: skills; knowledge; and character. Students will also be presented with basic aspects of music theory, aural training, and music history. The difficulty of literature at this level will range from grade 1 through 4. Expectations include: completing written homework, in class assignments, involvement in rehearsals outside of scheduled class time, and participation in all scheduled concerts. Students will also be asked to play at various school and community activities. The lead band director will be responsible for assigning students to the ensemble that will best suit the student's abilities, and fit the instrumentation needs of the ensemble.

BAND 2 (FMB3000) Prerequisite: Approval from the lead band director

This course follows Band 1 and is primarily for sophomores with 3 years of experience in Band. As the next course in the sequence, further refinement of skills and expectations of greater attention to detail are required of students at this level. The difficulty of literature at this level will range from grade 1 through 6. The lead band director will be responsible for assigning students to the ensemble that will best suit the student's abilities, and fit the instrumentation needs of the ensemble.

BAND 3 (FMB4000) Prerequisite: Approval from the lead band director

This course is primarily for juniors with 4 years of previous band experience in a secondary school. As the next course in the sequence, further refinement of skills and expectations of greater attention to detail are required of students at this level. The difficulty of literature at this level will range from grade 1 through 6. Students will be expected to mentor younger students and assist each other in active problem solving with regard to learning the music at hand. They will also be expected to assume greater responsibilities in leadership roles within the band. The lead band director will be responsible for assigning students to the ensemble that will best suit the student's abilities, and fit the instrumentation needs of the ensemble.

BAND 4 (FMB5000) Prerequisite: Approval from the lead band director

This course is primarily for seniors with 5 years of previous experience in a secondary school. As the final course in the sequence, students at this level are expected to demonstrate a high level of refinement in skills and attention to detail. The difficulty of literature at this level will range from grade 1 through 6+. Greater emphasis will be placed on leadership roles, conducting, and other aspects of creating excellence within the organization. The lead band director will be responsible for assigning students to the ensemble that will best suit the student's abilities, and fit the instrumentation needs of the ensemble. (Prerequisite: Approval from the lead band director)

MARCHING BAND (0.5 credit; Prerequisite-concurrent enrollment in band class/Approval from lead band director)
(AFTERSCHOOL- Open to Band and Flag/Rifle [color guard] members)

The Marching Band is a performance-based ensemble that provides students the opportunity to extend their musical knowledge and ability onto the marching field. The marching band occurs only during the fall semester, and students are required to participate in all rehearsals, performances, and football games. Other performances such as parades and other community services will also be required.

GUITAR 1A/1B (FMF1100/FMF1200) No Prerequisite

This course is designed to help students develop guitar performance skills while learning music fundamentals. Students develop folk performance skills such as strumming accompaniments to pop music. They perform as soloist and in ensembles while participating in a variety of musical activities. Activities include analyzing, singing, composing, listening, and evaluating. Students supplement the repertoire of the course with selections of interest to them.

GUITAR 2A/2B (FMF2100/FMF2200) Prerequisite Guitar 1A/1B

This course is designed to help the intermediate guitar student continue their performance skills while applying musical fundamentals. Students will refine guitar performance skills through numerous performances. They perform as soloist and in ensembles while participating in a variety of musical activities. Activities include weekly performances, chord structure tests, original compositions and learning music from the 60's through the 90's era. Students supplement the repertoire of the course with selections of interest to them.

GUITAR 3A/3B (FMF3100/3200) Prerequisite Guitar 2A/2B**GUITAR 4A/4B (FMF4100/4200) Prerequisite Guitar 3A/3B**

These courses are designed to help the advanced student master guitar performance skills while continuing to apply musical fundamentals. Students will focus on recording original compositions per semester. Activities include advanced composing, arranging, evaluating, and analyzing. Students will develop skills in creating compositions, arrangements, and professional recording. Students will also improvise accompaniments for songs. Students will supplement the repertoire of the course with selections of interest to them.

PIANO 1 (FMK1000) No Prerequisite

This is an introductory course designed to provide students with the opportunity to develop skills in piano playing. Student will be involved with performing, listening to, and evaluating piano. No prior piano experience or music skills needed.

PIANO 2 (FMK2000) Prerequisite Piano 1**PIANO 3 (FMK3000) Prerequisite Piano 2**

This course is designed to assist students in furthering their skills in piano playing. Students will be further involved in performing, listening to, and evaluating piano music. The instructor may select additional national music standards appropriate for the course and may integrate other Fine Arts standards.

CHORUS 1 (FMC1000) No Prerequisite

A performance based class that provides students the opportunity to develop their singing technique through both solo and ensemble experiences. Students will also learn music fundamentals including note-reading, phrasing, and musicality as well as learning how to take care of themselves as they are the instrument itself. Students may be asked to purchase a uniform depending on student interest and show requirements. Students are also expected to attend rehearsals outside of regular class period - after school, lunch, evenings, weekends. Non-class rehearsals are called as needed -- most rehearsals will occur during class.

CHORUS 2 (FMC2000) Prerequisite Chorus 1,**CHORUS 3 (FMC3000) Prerequisite Chorus 2****CHORUS 4 (FMC4000) Prerequisite Chorus 3**

These intermediate and advanced chorus classes provide students an opportunity to further develop their singing technique by refining the skills learned in Chorus 1 and are expected to exhibit further detail in the aspects of note-reading, phrasing, musicality, dynamics, and contour. Students may be asked to purchase a uniform based on student interest and show requirements. Students are also expected to attend rehearsals outside of the regular class period -- after school, lunch, evenings, weekends. Non-class rehearsals are called as needed -- most rehearsals will occur during class.

MUSIC TECH 1 No Prerequisite

The Music Technology 1 course is designed for students interested in exploring the medium of music technology. Students are introduced to the various pieces of software, hardware, and system set-up procedures. Various educational technologies such as GarageBand, eMedia Piano, and Pro Tools are utilized to explore the use of computers, multiple-track recorders and sequencers, and other technologies related to music.

MUSIC TECH 2 (Prerequisite Music Tech 1)**MUSIC TECH 3 (Prerequisite Music Tech 2)****MUSIC TECH 4 (Prerequisite Music Tech 3)**

These intermediate and advanced Music Technology classes provide students an opportunity to further develop their musical and technological skills. Students will continue to refine skills and are expected to exhibit further detail in their work. The instructor may select additional national music standards appropriate for the course and may integrate other Fine Arts standards.

DIRECTED STUDIES IN MUSIC (Prerequisite – instructor approval)

These courses are designed for students who wish to become future music educators and/or polish and refine skills in public music presentation through various mediums. Students at this level will be expected to mentor younger members of the band as well as to serve as positive role models for behavior and performance expectations. Expectations will include regular attendance at rehearsals and participation in all performances and functions.

WORLD LANGUAGES

All World Languages courses are Global Electives.

IMPORTANT THINGS YOU SHOULD KNOW

- * Candidates for admission to most universities are strongly advised to take **THREE to FOUR** years of the **same** world language in high school. Students are encouraged to see the post high school counselor about individual university requirements, though most will require at least two years of the same world language for admission.
- * Many universities require four semesters of a second language in order to graduate, regardless of your selected major.
- * Universities offer a language placement test. Successful completion of this exam could result in 3 to 12 credits being awarded as an entering freshman.
- * Two years of the same world language will fulfill one of the requirements for a high school diploma in the State of Hawaii.
- * World Languages are relevant to **ALL CAREER PATHWAYS**. Knowledge of a World Language makes you a more attractive candidate in the competitive job market.
- * During certain years, World Language teachers organize trips to countries where the target languages are spoken. French students can register for trips to France & Switzerland. Japanese language students visit Japan. Spanish students travel to Spain or other Spanish-speaking countries.
- * Language students have the opportunity to earn the Hawaii State Seal of Biliteracy displaying a high proficiency of Spanish, French, or Japanese in correlation with English or Hawaiian.
- * **Teacher approval is required for advancement to World Languages Levels 2-4.**

FRENCH

Did you know these facts about the French language?

1. *Worldwide, next to English, FRENCH is the language most often chosen as an international language.*
2. *FRENCH is spoken by over 125 million people -- in Europe, in Canada, in Africa, in the Pacific, in the Caribbean and even in Southeast Asia. It is the first or second language in more than 40 countries.*
3. *With more than 40% of English words of FRENCH origin, the study of the FRENCH language will increase your English vocabulary and improve your understanding of English grammar.*
4. *FRENCH is the language of culture, opening the door to art, music, dance, fashion, cuisine, literature and cinema.*
5. *In business, French is #3 after English and Mandarin.*

FRENCH 1 (WEF1000)

Bonjour! This is a basic course where you will be introduced to common vocabulary terms, simple sentence structure through exercises and activities, which will develop skills in listening, reading, writing and speaking the French language. You will find French easy to learn because the vocabulary is so similar to that of the English language. You'll be exposed to a culture different from your own through videos, discussions, food-tasting and field trips. (Purchase of workbook required)

FRENCH 2 (WEF2000)

Salut! Ca va? In this course, you will build on what you have learned in Level I. You will learn how to express yourself orally and in written assignments in the past tense and sentence structure becomes more sophisticated. Cultural activities continue.

FRENCH 3 (WEF3000)

Continuons le francais! If you intend to enroll sometime in a four-year college, continuing your study in the same language can only be to your advantage. Grammatical structures are more challenging at this level. Students will engage in role-playing to improve conversational skills and in activities involving reading and writing skills. Cultural activities continue. (Purchase of workbook required)

FRENCH 4 (WEF4000)

Vous etes arrives! At this level, you should have mastered most of the grammar needed to succeed at the university level. You are exposed to a wider range of vocabulary and will work on refining speaking skills and writing skills. Cultural activities continue.

HAWAIIAN

Aloha mai kākou! Learning a new language is always fun and exciting. Learning Hawaiian is also fun and exciting because you are learning about the language and the people of these islands. Wouldn't it feel good to know how to correctly pronounce street names? And understand what it means? In ka papa 'ōlelo Hawai'i, Hawaiian Language class, you learn this and much more. Be a part of the pride of the islands and a culture that lives through ALOHA . . . "E Ola Mau Ka 'Ōlelo Hawai'i."

HAWAIIAN 1 (WPH1000)

Aloha. This is a beginning course in 'ōlelo Hawai'i. At this level you will be introduced to Hawaiian grammar, phonetics, and culture through everyday speaking and writing practice.

HAWAIIAN 2 (WPH2000)

Aloha no! This course is the next stepping stone in 'ōlelo Hawai'i. At this level you will develop new skills – structures, vocabulary, and cultural attributes, to build upon the material learned in Level 1. This course emphasizes oral practice and demonstration.

HAWAIIAN 3 (WPH3000)

Welina mai 'oukou . . . This course will help develop those critical thinking skills in Hawaiian language. You will analyze the language with the concentration and focus on speaking fluently.

HAWAIIAN 4 (WPH4000)

This level is an in-depth continuation of the Hawaiian grammar and concepts of the other levels. It will give you the deeper understanding of the language and culture through media and technology.

JAPANESE

Why should you learn Japanese?

- *Japan is ranked third among the world's economic powers, produces the best selling cars, and is number one in video games and animation.*
- *Over 130 million people speak Japanese and it is ranked as one of the top 10 languages in the world.*
- *The 1.8 million Japanese visitors to Hawaii feel comfortable when visiting due to the large number of Japanese speakers in our workforce. Being able to speak Japanese will, therefore, help students to earn a higher wage (\$1.00+ per hour), help to improve Hawaii's economy, and help students to meet the entrance requirements of colleges.*

If you are afraid of learning Japanese, don't be. The teachers will guide and assist you at a comfortable pace. While it is, of course, necessary to learn vocabulary and grammar, the teachers work hard to try to make learning fun and painless through a variety of techniques and activities.

JAPANESE 1 (WAJ1000)

This course is an introduction to a modern, dynamic language that is a necessary and valuable skill in an increasingly competitive society. Students will develop the four basic language skills of listening, speaking, reading, and writing. Hiragana and Katakana (Japanese syllabary) will be introduced. A wide variety of cultural activities such as origami, calligraphy, Japanese foods, singing, etc. will be included.

JAPANESE 2 (WAJ2000)

Japanese 2 is a continuation of Japanese I and is designed as a stepping stone for the student who is interested in pursuing a college education, is planning to seek a career in the business industry, or is just interested in increasing his knowledge of the language. There will be an increase in sentence manipulation, vocabulary, and writing. A limited number of Kanji will be introduced. A variety of cultural activities will continue.

JAPANESE 3 (WAJ3000)

Level 3 introduces a variety of activities including creating realistic and meaningful conversations, short compositions, group reports on current topics, cultural posters, and food demonstrations in the language and school to work activities. More complex structures and additional vocabulary will be presented. Students will also learn approximately 75 kanji.

JAPANESE 4 (WAJ4000)

At this level students are expected to apply their structural knowledge of Japanese in everyday conversational situations. Role playing, cultural demonstrations, individualized research and reports, literature, school to work activities, poetry, and an additional 100 kanji will be covered. This course is highly recommended for the student who is interested in advancing his/her skills in Japanese or is planning to continue studying Japanese in college.

SPANISH

All this about Spanish?! WOW!!!

- 1) Spanish is the 2nd most commonly spoken native language in the world--over 435 million people worldwide!
- 2) Texas, California, Arizona, New Mexico, Utah, Nevada, and parts of Colorado and Wyoming used to be part of Mexico before the Mexican-American War in 1846.
- 3) "Español" is also referred to as "castellano" depending on the region where it is spoken.
- 4) Panama Hats are traditional hats of Ecuador.
- 5) Traditionally and still today in many cities and towns across the Spanish-speaking world, "siesta" time is an important part of the day. Shops and restaurants are even closed during this "nap" time!

SPANISH 1 (WES1000)

Did you know that there are over 21 Spanish-speaking countries in the world today and over 38 million Spanish speakers in the United States alone? Next to English, Spanish is the 2nd most spoken language at home! Just about all colleges and universities offer Spanish and taking a foreign language is highly recommended for those who are college bound! Useful vocabulary, grammar structure, and a focus on the present tense are incorporated in daily practice through listening, reading, writing, and speaking activities. Cultural elements play an important role through videos, crafts, music, etc. (Purchase of workbook required)

SPANISH 2 (WES2000)

This course is a continuation of Spanish 1 with further development of listening, reading, writing, and speaking skills. Cultural activities continue and students begin to identify with the Spanish Culture. By the end of level II, students will have developed the necessary skills to handle simple every day survival tasks in the target language. (Purchase of workbook required)

SPANISH 3 (WES3000)

Two years of language study is not enough! College bound students should definitely continue in their language study. For students who continue with the third year, Spanish will take on a new meaning and an increased level of language development. (Purchase of workbook required)

SPANISH 4 (WES4000)

You'll read an interesting selection of stories by great Hispanic authors. Story-telling, persuasive speeches, informative speeches, original oratory, as well as basic conversations will help you to become less hesitant in speaking. College preparation is emphasized. A field trip that is unique to this level is planned. (Purchase of workbook required)

SIGN LANGUAGE*

*Sign Language 1 and Sign Language 2 are taught on alternative years. **Sign Language 2 will be offered in 2019-20.**

SIGN LANGUAGE 1 (WNS1000) -- NOT OFFERED in SY 2019-20.

This course is designed for students interested in learning basic skills and general knowledge about American Sign Language, finger-spelling and Deaf Culture. Class time is divided among activities which emphasize vocabulary development, grammatical structure, drill experience and actual communication.

SIGN LANGUAGE 2 (WNS2000)

This course is a continuation of Sign Language 1. Sign language vocabulary will increase as well as the focus on expressive communication. Class time will also include more in depth knowledge of the grammar of ASL and Deaf Culture.

Prerequisite for Sign Language 1 or consent of instructor.

MISCELLANEOUS

COLLEGE PREPATORY SKILLS (AVID)

This course is designed to assist students with college preparatory course work with emphasis on analytical writing, preparation for college entrance and placement exams, study skills and test taking, note taking and research. It is modeled after a nationally recognized program, Advancement Via Individual Determination (AVID). **Prerequisite: Acceptance into Pearl City High School's AVID program. See current AVID teacher, Mr. Miyashiro (B201), for more information.**

LEADERSHIP TRAINING

Student council and class officers are assigned to respective advisors for leadership training. **Approval of supervisor required.**

DIRECTED STUDIES

Directed Studies require the sponsorship of a Pearl City High School faculty member and approval by a Vice-Principal, and a description of the work to be undertaken, which, in turn, requires planning in advance of the registration period. While a Directed Studies project normally is student-initiated, early interaction with a school faculty member is essential in the development of a mutually acceptable project description. At a minimum, such a description should contain an outline of the study topic, specification of the work to be done and the materials to be read, the type and frequency of faculty-student contact, and a statement of the evaluative criteria to be used by the faculty member.

SCHOOL SERVICE

Under the supervision of a teacher or counselor, students participate in servicing other students, teachers, and the school. Seniors are allowed to take two School Service classes if they have earned a total of 21 credits by the end of their junior year. **Teacher and counselor approval required.**

SPECIAL EDUCATION

Special Education students who complete graduation requirements which includes the completion of a program of regular and/or adapted courses of 24 credits will receive a high school diploma. For students who are unable to complete the regular graduation requirements, the Certificate of Completion of an Individually Prescribed Program (IPP) option is available. The determination to work toward a Graduation Diploma or a Certificate of Completion is made at an IEP conference.

COMMUNITY-BASED INSTRUCTION (CBI)

The purposes of this program are to provide students with functional, standards-based knowledge and skills to use to access and utilize the resources in their community. In addition, the student outcomes for this series of courses include, but are not limited to (a) the ability to self-advocate, (b) the development of daily living and social skills, appropriate behaviors and attitudes, and (c) demonstrate increased independence and mobility in their community. The activities must be linked to the students' goals and objectives and should support the students' post-school outcomes of the transition plan in the IEP. They must be authentic, challenging and age-appropriate and are not field trips. The course descriptions below are general and not meant to limit planning to specifically what is described; the scope of the activities is dependent on the readiness level of each student as determined by the IEP.

PREPARATION THROUGH ACADEMICS FOR COMPETITIVE EMPLOYMENT (PACE)

The PACE program is a class for students who plan to seek competitive employment, alternate education and or training. PACE provides functional academics, functional work academics/skills, on and off campus work experience and community workplace ready skills. Program differentiation is provided based on students IEP goals and objectives and vocational goals. Report cards will reflect "S" for satisfactory progress towards meeting goals and "U" for unsatisfactory progress towards appropriate goals. Grades are based on IEP goals and objectives towards a certificate of completion. Off campus work experience is the goal for Juniors and Seniors. For consideration for PACE placement, students should have the realistic possibility to be independently place in the community for job experiences. Credits are not earned towards a high school diploma.

SPECIAL EDUCATION ELECTIVES

PLANT SYSTEMS 1 RESOURCE

This vocational, hands-on course is designed to provide skills and technical information in horticulture. Students will gain an understanding of the process for growing plants, use of gardening tools, soil preparation for planting and nurturing of plants. Students will physically create the area they will be utilizing to visibly inspect plants for sickness/bugs, as well as, upkeep/maintain the area for weed control in order to optimize growth potential. Covered shoes are required for this class.

GENERAL ART RESOURCE

This class provides Special Education students with a variety of skills and concepts related to visual arts, including basic drawing, painting, and sculpting.

DIGITAL MEDIA RESOURCE

Digital Media is the integrations of pictures, video sound and text to express emotions, communicate thoughts, and demonstrate creativity. In this year long course, students will explore several different ways of expressing themselves digitally (photography, graphic design, video production) by developing and utilizing the elements and principles of visual arts in a world that craves digital media in all career pathways. This is a Special Education course.

CULINARY 1 RESOURCE

Students will be exposed to the importance of food/kitchen sanitation and safety via appropriate food preparation techniques. Students will also learn about the cycle of food production & consumption by introducing them to the economics of: fiscal/time management planning, application of mathematical concepts in the development of menus based on audience, venue, and resources when creating a meal. Students will also be exposed to the different culinary/hospitality opportunities and necessary skills of customer service and professional behaviors necessary to obtain successful employment.

Notice of Language Assistance

If you have difficulty understanding English, you have the right to receive language assistance at no cost to you. Please contact your school's principal for more information.

(Traditional Chinese / 繁體中文) 如果您理解英語有困難，您有權得到免費的語言幫助。請聯繫您的學校校長以獲得更多信息。

(Simplified Chinese / 简体中文) 如果您理解英語有困難，您有權得到免費的語言幫助。請聯繫您的學校校長以獲得更多信息。

(Japanese / 日本語) 英語の理解に困難を覚える方は、無料で言語支援を受ける権利があります。詳細につきましては学校長にお問合わせください。

(Hawaiian / 'Ōlelo Hawai'i) Ina pilikia oe i ka hoomaopopo i ka olelo Pelekania, he kuleana no kou e lawelaweia oe i ke kokua olelo me ka uku ole. E hui kuka me ke poo kumu o kou kula no kekahi ike hou aku.

(Korean / 한국어) 영어를 이해하는데 어려움이 있는 경우, 무료로 통역 지원을 받을 권리가 있습니다. 더 자세한 정보는 학교장에게 연락하십시오.

(Chuukese / Kapasen Chuuk) Ika epwe weires ngonuk omw weweiti fóós un Merika, mi wor omw pwúung omw kopwe angei aninnisin aweween fóós esapw kame. Kose mochen kékkééri ewe meinapen ewe sukun (Principal) ren tichikin pworausan.

(Ilokano / Ilokano) Nu narigat mo a maawatan ti Ingles, karbengam nga umawat ti tulong ti lenggwahe ket awan bayad na dayta a serbisyo. Para ti kanayonan nga impormasyon, mabalin a kontakem ti prinsipal ti eskwelaan yo maipanggep iti dayta a serbisyo.

(Samoan / Gagana Samoa) Afai e faigatā ona ē malamalama i le Igilisi, e i ai lau aiā e maua ai le fesoasoani tau gagana e aunoa ma se tupe e te totoi ina. Fa'amolemole fa'afeso'ota'i le pule o lau aoga mo nisi fa'amatalaga.

(Tongan / Lea faka-Tonga) Kapau 'oku faingata'a ke mahino kiate koe 'a e lea faka-Papalangi, 'oku 'i ai ho'o totonu ke ke ma'u ha tokoni fakatonulea 'ikai totongi. Kataki 'o fetu'utaki ki he puleako ki ha toe fakaikiiki ange.

(Tagalog / Tagalog) Kung nahihirapan kang intindihin ang Ingles, karapatan mong makatanggap ng tulong para sa lenggwahe at libre ang serbisyong ito. Para sa karagdagang impormasyon, maari mong kontakin ang prinsipal ng inyong paaralan tungkol sa serbisyong ito.

(Cebuano / Sugboanon) Kon kamo adunay kalisud sa pagsabut sa Iningles, naa moy katungod sa pagdawat sa tabang sa pinulongan nga walay gasto kaninyo. Palihog kontakang prinsipal sa inyong eskwelahan alang sa dugang nga impormasyon.

(Vietnamese / Tiếng Việt) Nếu quý vị thấy khó khăn trong việc hiểu tiếng Anh, quý vị có quyền nhận được sự hỗ trợ ngôn ngữ miễn phí. Vui lòng liên hệ hiệu trưởng của trường quý vị để biết thêm thông tin.

(Spanish / Español) Si tiene dificultad para entender Inglés, tiene derecho a recibir asistencia lingüística sin costo alguno para usted. Comuníquese con el director de su escuela para obtener más información.

(Marshallese / Kajin Majôl) Elaññe ejabwe am melele kajin Pälle, ewōr am jimwe ñan jibañ ko ikijien ukok ilo ejelok wōnen. Jouj im kōjjelāik lok principle eo an jikuul eo am ñan melele ko rellep lok.