



# 2018 NFHS SOFTBALL RULES POWERPOINT

National Federation of State  
High School Associations



Take Part. Get Set For Life.™

Rules Changes  
Major Editorial Changes  
Points of Emphasis



# 2018 NFHS SOFTBALL RULES CHANGES





**TEAM IP IS PROUD TO BE THE  
EXCLUSIVE CORPORATE PARTNER FOR NFHS SOFTBALL**



[www.teamip.com](http://www.teamip.com) | Toll Free: 1-877-821-8643



**Inc. 500 | 5000**





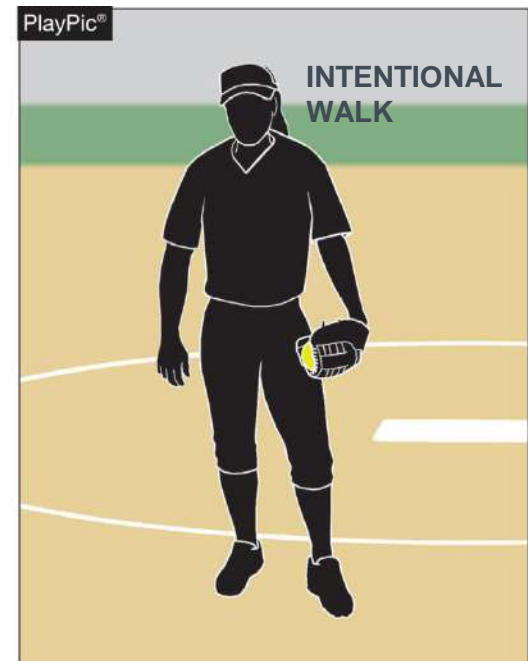
# CORRECTIONS

- **Rules Book 2-65-2**  
**ART. 2 . . . Intentional Walk (Base on balls)** – A request made to the umpire by the defensive coach, pitcher or catcher, for the purpose of awarding the batter first base. ~~No pitches are thrown.~~ The request may be made prior to or during the at bat.
- **Case Book**  
**8.1.1 SITUATION G J:** R1 is on third. R1 starts home as in a squeeze play. F3, who is playing close for a bunt, cuts off the pitch and tags R1. **RULING:** This is treated the same as catcher obstruction. The ball becomes dead at the end of playing action. The coach or captain of the team at bat has the option of the play or penalty. If the penalty is accepted, R1 is awarded home and B2 is awarded first. (2-36, 8-1-1d)



# INTENTIONAL WALK

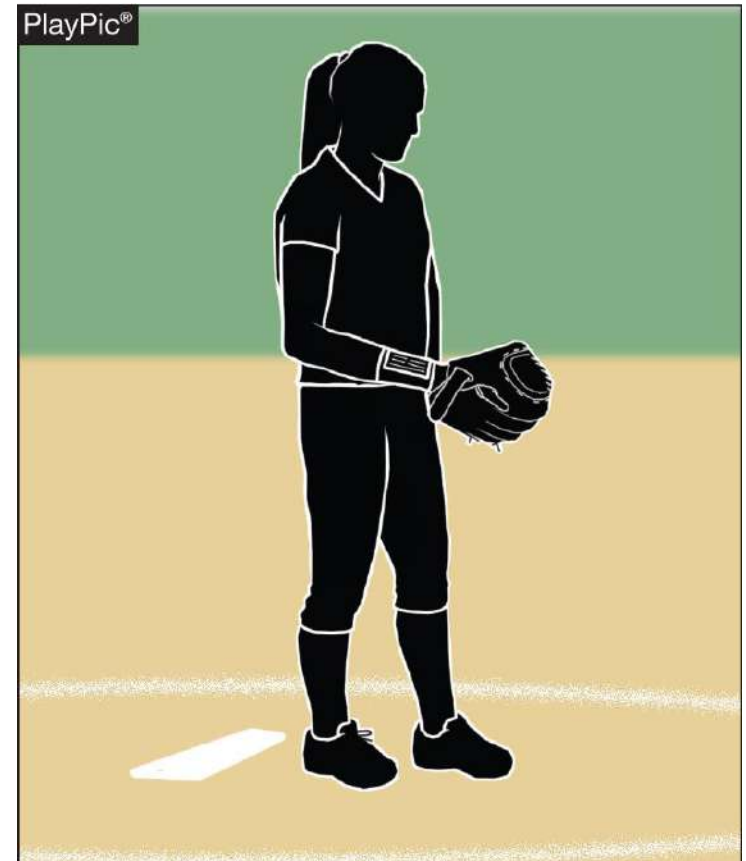
## RULES 2-65-2, 8-1-1c, 8-4-3a



- **ART. 2 . . . Intentional Walk (Base on balls) (S.P.).** A request made to the umpire by the defensive coach, pitcher or catcher, for the purpose of awarding the batter first base. ~~No pitches are thrown.~~ The request may be made prior to or during the at bat.

# EQUIPMENT RULE 3-2-7c EXCEPTION (NEW)

- Any wristband with a playbook/playcard attached shall be considered equipment and is permitted as long as it is a single, solid color and not optic yellow. It does not have to match the color of the upper undergarment. It shall only be worn on the non-pitching arm.



# EQUIPMENT RULE 3-2-15

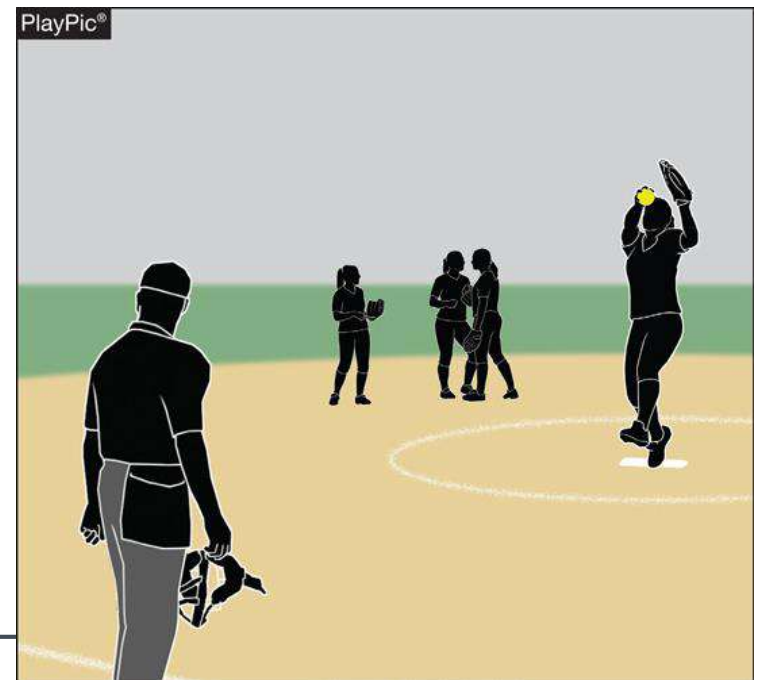


~~ART. 15 ... All equipment shall be inspected by the umpire, and is to be placed outside the dugout/bench prior to the start of the game.~~

# CHARGED CONFERENCES

## RULE 3-7-1 NOTE (NEW)

- NOTE: If the incoming pitcher has already pitched in the game, she will receive five warm-up pitches. When a pitcher is removed by rule and the incoming pitcher has not pitched in the game, the umpire is authorized to permit warm-up pitches.

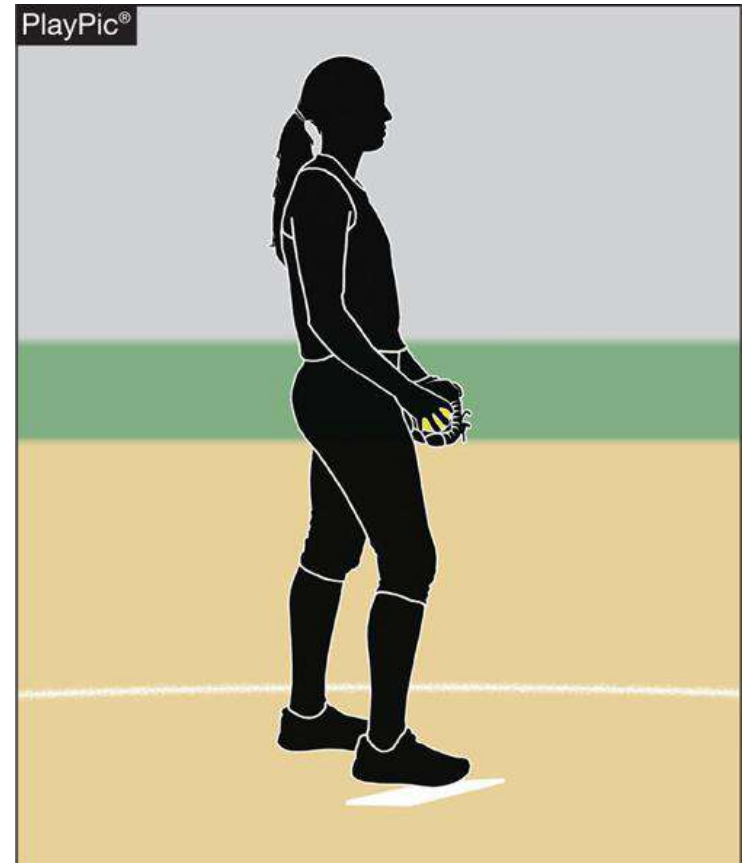




# PITCHING REGULATIONS (F.P.)

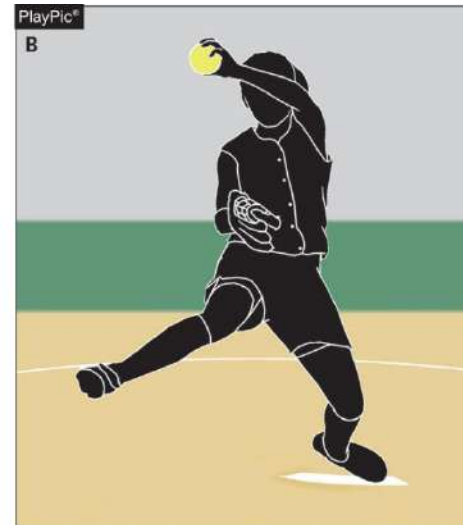
## RULE 6-1-2b

- Any step backward shall begin prior to the start of the pitch. The step backward may end before or after the hands come together. Once the pitch has started, the pitcher shall not take more than one step which must be forward, toward the batter and simultaneous with the delivery.



# INFRACTIONS BY PITCHER (F.P.)

## RULE 6-2-5 NOTE 2



- **ART. 5 . . .** At the beginning of each half-inning or when a pitcher relieves another, no more than one minute may be used to deliver no more than five balls to the catcher or other teammate. The one-minute time limit begins from the third out of the previous half-inning. Play shall be suspended during this time.

**NOTE 2:** Umpire is authorized to allow more pitches when weather is inclement or if pitcher was removed by rule or due to an injury.



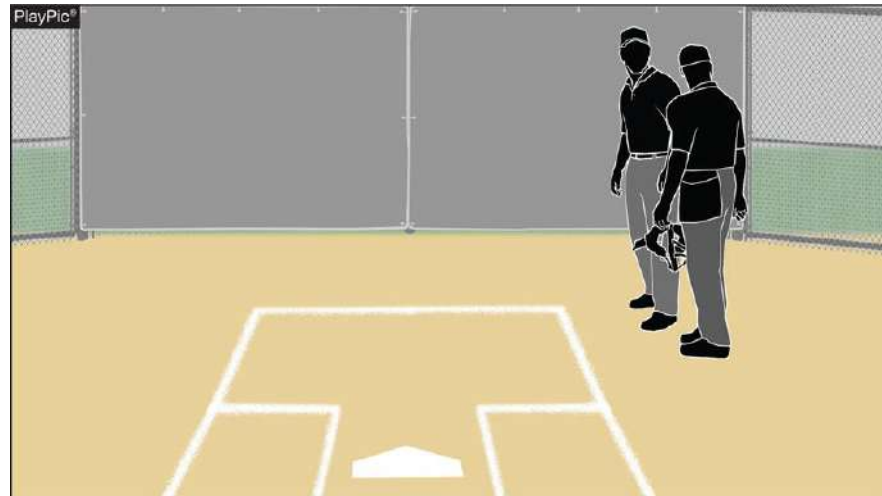
# PITCHER'S RECORD

## RULE 9-6-2

- **ART. 2 . . .** The number of bases on balls, batters being hit by a pitch (F.P.), strikeouts, and base hits allowed by each pitcher shall be recorded in the summary. If a batter is hit by what would have been the fourth ball (F.P.), it is recorded as a hit batter. An intentional walk is recorded as a base on balls.



# PLATE UMPIRE RULE 10-2-3a



- **ART. 3 . . .** The duties include those listed in 10-2-1 and also the following:
  - a. conduct the pregame conference as in 4-1-2. Inspect ~~equipment, including batting and catcher's helmets, bats,~~ inspect the condition of the field, define the dugout/bench areas, and if necessary, designate the official scorekeeper (9-2-2).



# 2018 NFHS SOFTBALL MAJOR EDITORIAL CHANGES



# BENCH AND FIELD CONDUCT RULE 3-6-12



- **ART. 12 . . .** ~~Tobacco products, in any form, are prohibited.~~ No participant, coach or administrator shall use alcohol or any form of tobacco product (e-cigarette or similar items) beginning with arrival at the competition site until departure following the completion of the contest.

## 8-1-2 HIT BY PITCH

- **ART. 2 . . .** A batter is awarded first base when:
  - c. (F.P.) a pitched ball (not entirely in the batter's box) not swung at nor called a strike touches any part of the batter's person or clothing. It does not matter if the ball strikes the ground before hitting the batter. The batter's hands are not to be considered part of the bat. If no attempt is made to avoid being hit, the batter will not be awarded first base unless it is ball four.



# BENCH AND FIELD CONDUCT RULE 10-1-6



- **ART. 6 . . .** ~~Umpires shall not use tobacco products in any form in the vicinity of the playing field.~~ No game official shall use alcohol or any form of tobacco product (e-cigarette or similar items) beginning with arrival at the competition site until departure following the completion of the contest.





# 2018 NFHS SOFTBALL POINTS OF EMPHASIS

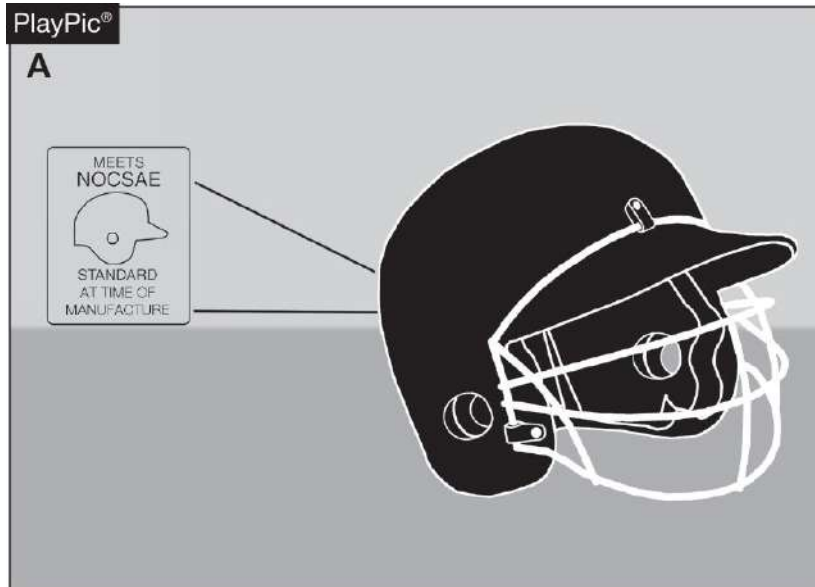


## COACHES RESPONSIBILITY

- Coaches are responsible for verifying at the pregame conference that all their players are legally and properly equipped. Penalties for illegal equipment range from correcting the problem if possible or having the equipment removed. Possible restriction to the dugout or ejection for the player and coach depending on the severity of the infraction could occur.



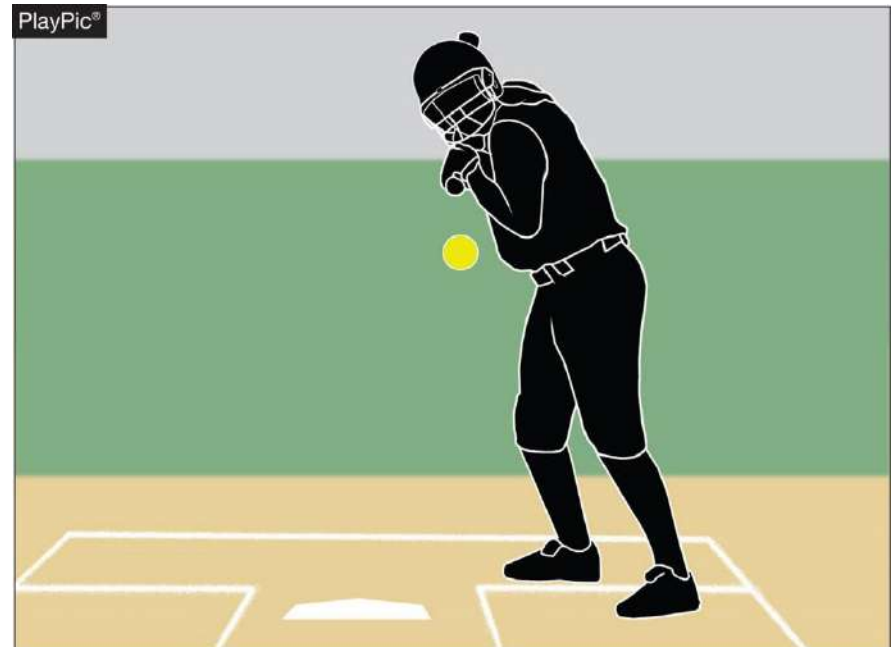
## OTHER EQUIPMENT



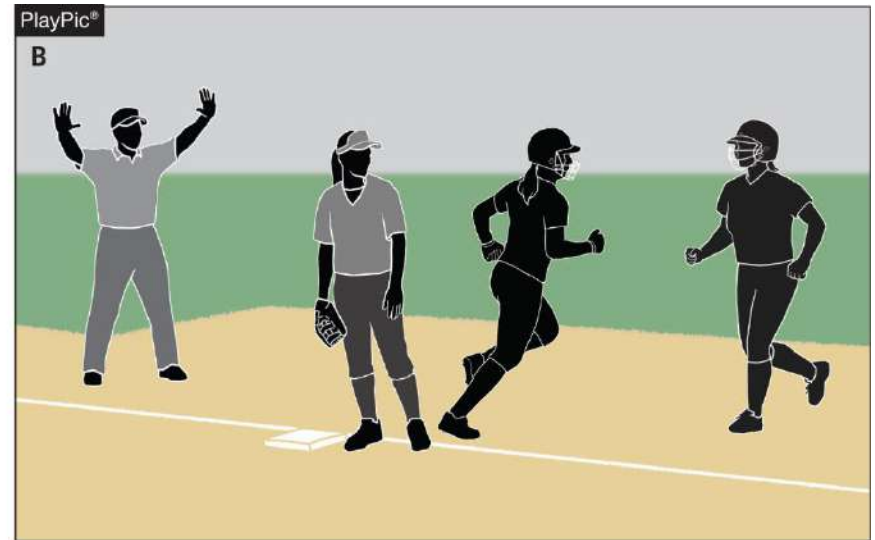
- Coaches should also review Rule 1-8 to be familiar with what other equipment is permitted for players and coaches.

## HIT BY PITCH

- The ball is not in the strike zone and is not completely in the batter's box. The batter still must make an effort to avoid being hit.



# COURTESY RUNNER FOR PITCHER AND CATCHER



- The pitcher is injured (PlayPic A) and is unable to face the first batter in the bottom of the first inning. The player who ran for her is retroactively her substitute, no longer a courtesy runner (PlayPic B). All substitution rules apply and the pitcher and/or catcher has left the game.



**THANK YOU AND HAVE A  
GREAT SEASON!**

[www.nfhs.org](http://www.nfhs.org)

