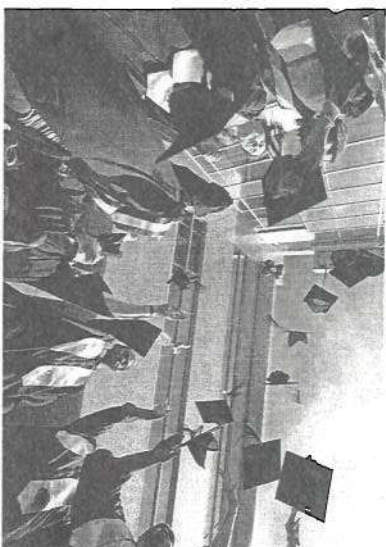


GAIPSEC

Georgia Inclusive Postsecondary Education Consortium

FAST FACTS

- ~ 260+ Inclusive Postsecondary Education (IPSE) options throughout the United States
- ~ 8 established IPSE program in Georgia
- ~ 2 IPSE programs opening in 2017-18 academic year in GA
- ~ \$350,000 currently from GA Legislature
- ~ 120+ students attending IPSE Programs 2017-18 academic year in Georgia

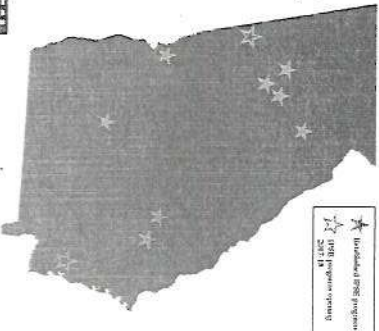


MISSION

The Georgia Inclusive Postsecondary Education Consortium creates opportunities for students with intellectual and developmental disabilities to participate in college and university life. The consortium provides information, training, and technical assistance to individuals, families, secondary education programs, colleges, and universities. The consortium has also in the past supported feasibility and start-up costs for IPSE programs. Members of the GAIPSEC are committed to evaluating the immediate and long-term impact and outcomes of IPSE programs for participating students.

2017-2018 Academic Year

- Georgia Colleges & Universities with established or *forming* IPSE Programs
- Kennesaw State University (KSU)
 - East Georgia State College (EGSC)
 - Columbus State University (CSU)
 - Georgia Institute of Technology (GT)
 - Albany Technical College (ATC)
 - University of Georgia (UGA)
 - Georgia State University (GSU)
 - Georgia Southern University (GSU2)
 - College of Coastal Georgia (CCG)
 - University of West Georgia (UWG)



PARTNERS

- Georgia Council on Developmental Disabilities
- Georgia Vocational Rehabilitation
- Georgia Department of Education
- Georgia Department of Behavioral Health and Developmental Disabilities
- Georgia Advocacy Office
- Institute on Human Development and Disability, University of Georgia
- Parent Mentor Partnership
- Tools for Life/AMAC, Georgia Tech

Project of



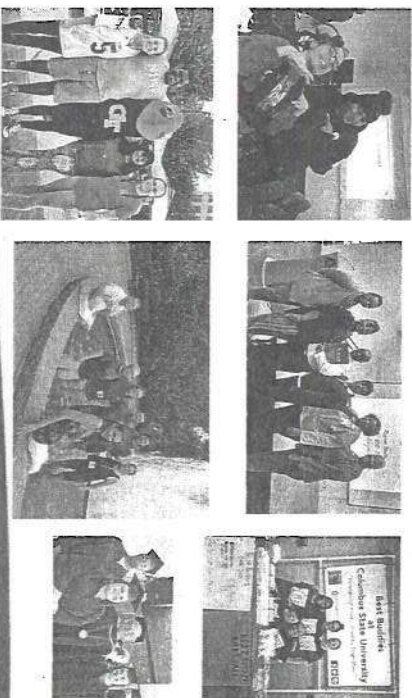
UNIVERSITY OF GEORGIA



The Georgia Inclusive Postsecondary Education Consortium is a project of the Center for Leadership in Disability at Georgia State University. The Consortium is funded by the US Department of Education, Office of Postsecondary Education, Grant #H407A150079.

www.gaipsec.org

gaipsec@gsu.edu





WINTER 2017

Inclusive Post-Secondary Programs in Georgia

The number and size of IPSE programs are growing. As recently as 2014, there was only one IPSE program in Georgia. Over the next few years, it is very likely that we will see MORE IPSE programs and MORE programs achieve the CTP certification

Academy for Inclusive Learning & Social Growth at Kennesaw State University ("the Academy")

CTP? Yes

Program Length? 2 or 4 years

Program focus? Multiple fields of study

GVRA teachers? Karla Wade & Sue Kizer

GVRA counselor? Served by dedicated Metro Atlanta

IPSE counselor out of Canton office

<http://wellstarcollege.kennesaw.edu/academy/>



Expanding Career, Education and Leadership Opportunities at Georgia Tech ("EXCEL")

CTP? Yes

Program Length? 4 years

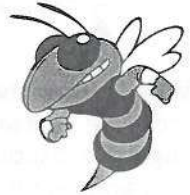
Program focus? Multiple fields of study

GVRA teacher? Pam Hunter Dempsey

GVRA counselor? Served by dedicated Metro Atlanta

IPSE counselor out of Canton office

<https://www.scheller.gatech.edu/centers-initiatives/file/excel/index.html>



Inclusive Digital Expression & Literacy at Georgia State University ("IDEAL")

CTP? Not yet

Program length? 2 years

Program focus? Digital/media literacy, technology & communication

GVRA teacher? Not currently

GVRA counselor? Served by dedicated Metro Atlanta

IPSE counselor out of Canton office

<http://cps.education.gsu.edu/research/ideal/>



Destination Dawgs at University of Georgia

CTP? Not yet

Program Length? 2 ½ years

Program focus? Multiple fields of study

GVRA teacher? Lisa Ulmer

GVRA counselor? Served by Athens office

<http://www.fcs.uga.edu/ihdd/destination-dawgs>



Guidance and Opportunities for Academic and Leadership Success Program at Columbus State University ("GOALS")

CTP? Not yet

Program length? 2 years

Program focus? Multiple fields of study

GVRA teacher? Lykesia Truss

GVRA counselor? Served by Columbus office

<https://te.columbusstate.edu/goals.php>



Creating Higher Education Opportunities to Increase College Experiences ("CHOICE") at East Georgia State College

CTP? Yes (approved January 2017)

Program length? 2 years

Program focus? Multiple fields of study

GVRA teacher? Lora Raines

GVRA counselor? Served by Swainsboro office

http://www.ega.edu/offices/student_affairs/choice



What are GVRA teachers?

GVRA teachers are professional educators embedded in various IPSE programs around the state. They are our employees who we were able to bring on board thanks to a partnership with the State Department of Education.

Leveraging Education in Advancement Program at Albany Tech ("LEAP")

CTP? Not yet

Program length? 1 ½ years

Program focus? Business office operations

GVRA teacher? Validia King

GVRA Counselor? Served by Albany office

<http://www.albanytech.edu>



Programs Coming Soon



REACH HIGHER at College of Coastal Georgia, EAGLE Academy at Georgia Southern University, and a program at University of West Georgia.



Social Security Administration

Checklist For Online Adult Disability Application

This checklist will help you gather the information you may need to complete the online adult Disability application process. We recommend you print this page to use while you gather your information. We hope you find our online application easy and convenient.

Birth and Citizenship Information If you were born outside the United States or its territories: <ul style="list-style-type: none"> Name of your birth country at the time of your birth (it may have a different name now) Permanent Resident Card number (if you are not a U.S. Citizen) 	
Marriage and Divorce <ul style="list-style-type: none"> Name of current spouse and prior spouse (if the marriage lasted more than 10 years or ended in death) Spouse(s) date of birth and SSN (optional) Beginning and ending dates of marriage(s) Place of marriage(s) (city, state or country, if married outside the U.S.) 	
Names and Birth Dates of Children Who <ul style="list-style-type: none"> Became disabled prior to age 22, or Are under age 18 and are unmarried, or Are aged 18 to 19 and still attending secondary school full time 	
U.S. Military Service <ul style="list-style-type: none"> Type of duty and branch Service period dates 	
Employer Details for Current Year and Prior 2 Years (not self-employment) <ul style="list-style-type: none"> View your Social Security Statement online at: www.ssa.gov/myaccount Employer name Employment start and end dates Total earnings (wages, tips, etc.) 	
Self-Employment Details for Current Year and Prior 2 Years <ul style="list-style-type: none"> View your Social Security Statement online at: www.ssa.gov/myaccount Business type and total net income 	
Direct Deposit Domestic bank (USA) <ul style="list-style-type: none"> Account type and number Bank routing number 	International Bank (Non-USA) <ul style="list-style-type: none"> International Direct Deposit (IDD) bank country Bank name, bank code, and currency Account type and number Branch/transit number
Name, address and phone number of someone we can contact who knows about your medical condition(s) and can help you with your claim	
List of your medical conditions	
Information about Doctors, Healthcare Professionals, Hospitals and Clinics <ul style="list-style-type: none"> Names, addresses, phone numbers, patient ID numbers, and dates of examinations and treatments Names and dates of medical tests you have had and who sent you for them Names of medications (prescriptions and non-prescriptions), reason for medication and who prescribed them 	
Information about other medical records that may be available from vocational rehabilitation services, workers compensation, public welfare, prison or jail, an attorney or lawyer, or another place	
Job History <ul style="list-style-type: none"> Date your medical condition began to affect your ability to work Type of jobs (up to 5) that you had in the 15 years before you became unable to work because of your medical condition Dates you worked at those jobs, if available Type of duties you did on the longest job you had 	
Education and Training <ul style="list-style-type: none"> Highest grade in school completed and date you completed it Name of special job training, trade school or vocational school and date completed Special education school name, city and state, and date completed 	

We may contact you for additional information after you submit your online application.