



Georgia ACTE

Energizing Education
and the Workforce

61ST ANNUAL

**GACTE SUMMER
LEADERSHIP CONFERENCE**

WELCOME!

WE HAVE OVER 320
FACS, CULINARY &
EDUCATION
TEACHERS
PRESENT.

- THANK YOU FOR YOUR MEMBERSHIP IN GACTE.

FACS IS THE SECOND LARGEST AFFILIATE GROUP WITH 386 MEMBERS. THIS IS GREAT, BUT FOR THE NUMBER OF TEACHERS WE HAVE, EXCESS OF 1000, WE CAN DO BETTER. I ENCOURAGE YOU TO JOIN – IF YOU ARE NOT ALREADY A MEMBER – AND I COMMEND YOU ON YOUR DEDICATION TO CTAE!



CURRICULUM

Curriculum: New in 08-09

- Implementation of phase 2 pathways with the new GPS:

Nutrition & Food Science

Culinary Arts

Early Childhood Education

Teaching as a Profession

Nutrition & Food Science

- This pathway will consist of the following 3 required courses:

Food Nutrition & Wellness,

Food Nutrition Through the Lifespan

Food Science

- These courses will not be sequential, so this will make it easier for your student and registrar to schedule.
- A FACS teacher will need no further certification to teach this pathway.
- This pathway will have labs, but this pathway will not be an assortment of cooking classes.
- The Lifespan and Food Science course will count as science credit for your incoming freshmen that will need a 4th Science.

Culinary Arts

- 3 Required Courses:
Introduction to Culinary
Culinary I
Culinary II
- These courses are sequential, and need to be taught in either one block, or two class periods.
- All three courses have been written to articulate with post secondary partners, and the curriculum is based on ACF standards.

Culinary Arts Requirements

- For a FACS teacher to teach this pathway, they must have:
 1. Culinary Arts Lab, or Modified Lab
 2. In the process of a Culinary Endorsement by the PSC – which would be either completion of NRAEF Secondary Certification, or the new Culinary Certification that is in process. We hope to start offering this new certification this Fall, until then, please ensure you have completed ServSafe and your 120 industry hours, as they are prerequisites for the endorsement workshops.
 3. Even if you are not presently teaching Culinary Arts, but hope to down the road, you are welcome to work on the Culinary Endorsement now.

ServSafe

- There will be a ServSafe course attached to this conference –

Wednesday afternoon, 2-6pm

Thursday afternoon, 8-noon

at Chattahoochee Technical College, in Marietta. Please see David or myself for directions. If you are local, I encourage you to attend. For those out of town, if you can arrange to stay another night, it will be worth it to get your ServSafe requirement completed.

Early Childhood Education

- This pathway has 3 required courses, but as all pathways will have options for, it does have an Internship Course too. The required courses for this pathway are:

Introduction to ECE

Human Growth & Development for Early Childhood
Health, Safety & Nutrition for the Young Child

- These courses are non sequential.
- This pathway does require lab experiences, either on site or off site.

Bright From the Start Partnerships

- We are working with Bright From the Start to place lottery funded pre-k programs in your on-site lab, if you are interested.
- They will fund the teacher, parapro and some materials.
- Those teachers working the classroom and lab simultaneously, this is an excellent opportunity.
- See me if you are interested.

Teaching as a Profession

- 3 required courses:
Examining the Teacher Profession
Contemporary Issues in Education
Teaching as a Profession Internship
- The internship course must be the last in this pathway, but the first two are not sequential.

Phase 3 pathways have just
been approved by the State
Board of Education:

- Consumer Services
- Interior Design
- Family, Community & Global Leadership **AND**
- Middle School
- FACS Career Essentials

Interior Design

Three Required Courses:

- Foundations of Interior Design
- Interior Design Materials and Components
- Textile Science (This class will be recommended for science credit.)

Consumer Services

Three Required Courses

- Consumer Awareness
- Consumer Skills
- Consumer Finance

Family, Community & Global Leadership

Three Required Courses

- Understanding Self & Family
- Community Leadership & Service
- Advocacy & Global Leadership

GPS Training

- GPS Training for the phase 2 pathways was held last February. Copies of these power points are available on the DOE website, under each respective program area (exception of ECE).

Phase 3 GPS Training

- GPS training for Consumer Services, Interior Design, Family, Community & Global Leadership, and FACS Career Essentials will be held during the 08-09 school year, with implementation in the 09-10 school year.

Nutrition & Food Science

- I know there is a lot of concern on this pathway and professional development, we will have additional GPS workshops offered in the Fall, and I will send out a notice when they are posted.

Middle School GPS

- GPS Training for middle school will be held July 30th at 10 locations around the state, register today:

Atlanta, fullAlbany **

ClevelandSavannah

AthensColumbus **

ValdostaDalton **


GrantvilleAugusta

Lesson Plans & Resources

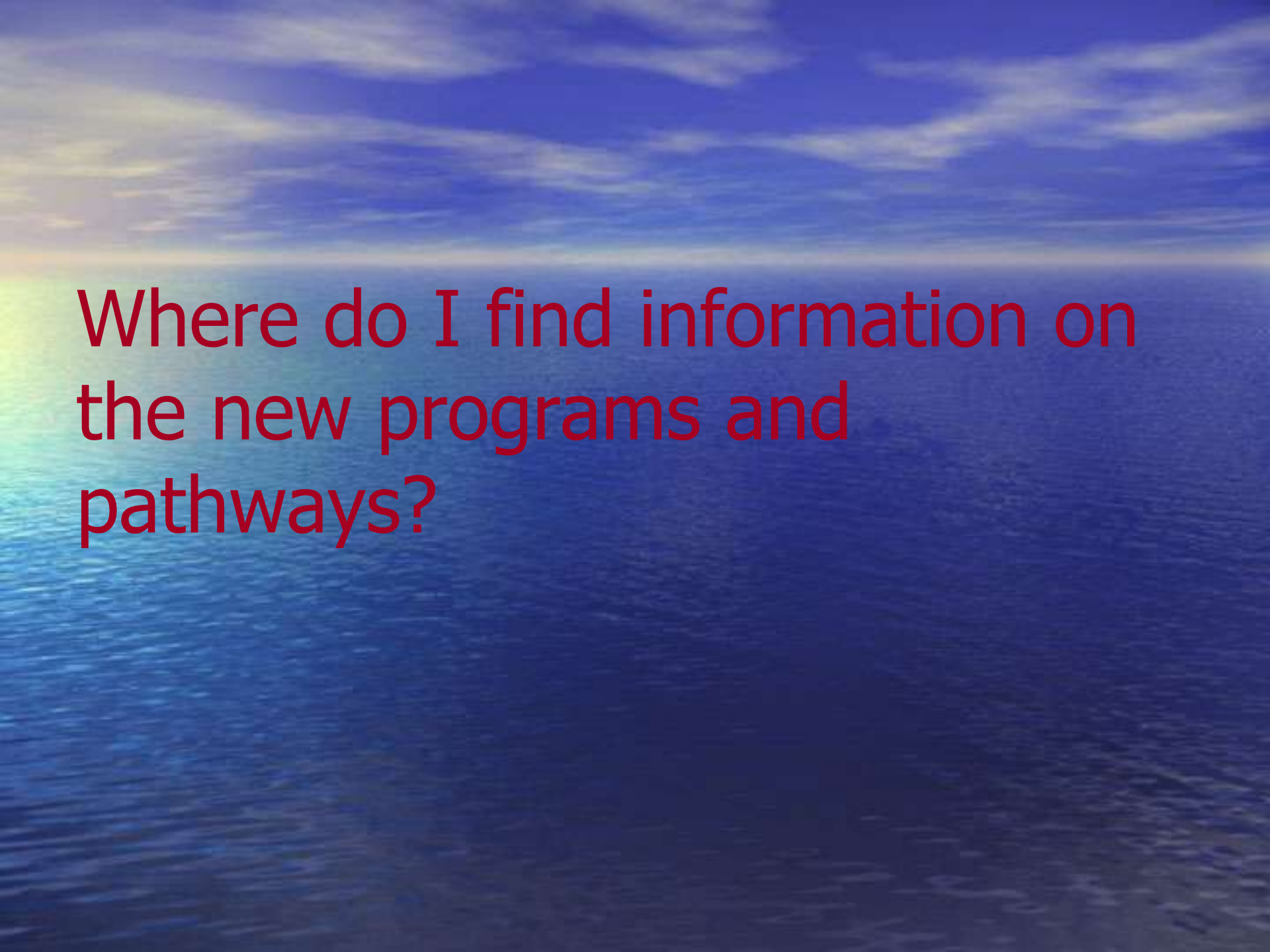
- The CTAERN in cooperation with the DOE and CTAE Teachers has developed a DVD with curriculum, lesson plans and resources for all phase I pathways and programs.
- Foundational CTAE Skills are available with lesson plans for your use.

CTAERN DVD

- Due to limited funding, selected phase II pathways will begin in the Fall – ECE, Teaching and Culinary are in the proposed pathways. We are looking for additional funds so we may also work on the additional phase II pathway – Nutrition & Food Science.

A sunset over a vast blue ocean. The sun is on the left side of the frame, creating a bright glow and casting a reflection on the water. The sky is a deep blue with some light clouds. The text is centered in the middle of the image.

Let's take a brief look at the
DVD and see what will be
available to you next year.



Where do I find information on
the new programs and
pathways?

Improving student achievement.

Georgia Department of Education



AskDOE

Search

[Home](#) » [About GaDOE](#) » [Office of Standards, Instruction and Assessment](#) » Career, Technical and Agricultural Education

Standards, Instruction and Assessment Career, Technical and Agricultural Education

Creating a world-class workforce for Georgia in the 21st Century.

DIVISIONS

- ◀ [Career, Technical and Agricultural Education](#)
- ◀ [Curriculum and Instructional Services](#)
- ◀ [Special Education Services and Support](#)
- ◀ [Innovative Academic Programs](#)
- ◀ [Testing](#)

CONTACT INFORMATION



James Woodard
Director, Career, Technical & Agricultural Education
1752 Twin Towers East
205 Jesse Hill Jr. Drive SE
Atlanta, GA 30334
(404) 657-8304
(404) 651-8984
jwoodard@doe.k12.ga.us

[Staff Contact List](#)

[James Woodard Biography](#)

[Report Problems with this Page](#)

VISION

"To create a secondary profile of career readiness for Georgia."

CTAE Standards

- [Performance Standards](#)
 - [PROPOSED Phase III High School Performance Standards](#)
 - [PROPOSED Phase I Middle School Performance Standards](#)

Perkins Career and Technical Improvement Act

- [Public Review](#)

Program Delivery

- [Agriculture](#)
- [Architecture, Construction, Communication and Transportation](#)
- [Business and Computer Science](#)
- [CTSO Student Recognition](#)
- [Culinary Arts](#)
- [Education](#)
- [Family and Consumer Sciences](#)
- [Engineering and Technology](#)
- [Healthcare Science](#)
- [Marketing, Sales and Services](#)
- [Special Population](#)
- [Student Organizations](#)

Development and Transition

NEWSLETTERS

- ◀ [June 2008](#)
- ◀ [May 2008](#)
- ◀ [April 2008](#)
- ◀ [January 2008](#)
- ◀ [November 2007](#)

» More

PRESENTATIONS

- ◀ [CTAE, Agriculture, and Accountability Regional Update Spring 2008](#)
- ◀ [Development and Transition, Program Delivery Regional Update Spring 2008](#)
- ◀ [Perkins IV Public Hearing Presentation](#)
- ◀ [CTSO and ECP Illuminate PowerPoint](#)
- ◀ [2007 Fall Region Updates](#)

» More

DIRECTORIES

- ◀ [CTAE System Contact List](#)
- ◀ [Youth Apprenticeship Directory by Region Fall 2007](#)
- ◀ [Youth Apprenticeship Advisory Council Members 2007-2008](#)
- ◀ [Youth Apprenticeship Region Map](#)

HELPFUL LINKS

- ◀ [CTAERN web site](#)
- ◀ [2007 New Georgia Career, Related Education Manual](#)
- ◀ [Multistate Academic and Vocational Curriculum Consortium \(MAVCC\)](#)
- ◀ [Curriculum Frameworks](#)



Standards, Instruction and Assessment Career, Technical and Agricultural Education

Creating a world-class workforce for Georgia in the 21st Century.

DIVISIONS

- [Career, Technical and Agricultural Education](#)
- [Curriculum and Instructional Services](#)
- [Special Education Services and Support](#)
- [Innovative Academic Programs](#)
- [Testing](#)

CONTACT INFORMATION



Leana Ergle
Program Specialist
Career, Technical &
Agricultural Education
1752 Twin Towers East
205 Jesse Hill Jr. Drive SE
Atlanta, GA 30334
☎ (404) 463-8408
☎ (404) 651-8884
✉ leergle@doe.k12.ga.us

[Leana Ergle Biography](#)

[Staff Contact List](#)

[Report Problems with this Page](#)

Family and Consumer Sciences

Program Concentration: Family and Consumer Sciences

- [Career Pathways](#)
 - [Consumer Services](#)
 - [Interior Design](#)
 - [Nutrition and Food Science](#)
- [Career Technical Student Organizations](#)
- [Equipment Lists](#)
- [Industry Certification Standards](#)
- [Lab Layouts](#)
- [Teacher Certification Requirements](#)
- [Unit Plans - GeorgiaStandards.org](#)
- [FAQS about Family and Consumer Sciences](#)

What It's About

Family and Consumer Sciences program prepares students for post secondary education and careers in the business related aspects of family and consumer sciences. It provides opportunities to develop the knowledge, skills, attitudes, and behaviors that students need to become responsible citizens and leaders; and to manage the challenges of living and working in a diverse global society.

In addition to classroom/ laboratory instruction, which aids in the development of academic and technical skills, the Family and Consumer Sciences program also includes participation in the Family Career and Community Leaders of America (FCCCLA), a career and technical student organization. FCCCLA provides an array of activities to enhance student academic and technical competencies and develop leadership and communication skills.

Why It's Important

FCC Archives

- [Middle School Curriculum, Grade 8 FCC](#)
- [Middle School Curriculum, Grade 7 FCC](#)
- [Middle School Curriculum, Grade 8 FCC](#)

FCC Resources

- [DOE Winter 2005 Update, Food, Nutrition and Wellness, GPS](#)
 - [Food Science GPS](#)
 - [Nutrition and Food Science Pathway GPS Download](#)
 - [2008-2009 Courses](#)
- [» More](#)

FCC WCC Resources

- [Georgia FCCLA](#)
- [National FCCLA](#)
- [FFA/FCCLA Camp](#)

Improving student achievement.

Georgia Department of Education



GA DOE

Search

[Home](#) > [About GaDOE](#) > [Office of Standards, Instruction and Assessment](#) > [Career, Technical and Agricultural Education](#) > [Culinary Arts](#)

Standards, Instruction and Assessment Career, Technical and Agricultural Education

Creating a world-class workforce for Georgia in the 21st Century.

DIVISIONS

- [Career, Technical and Agricultural Education Curriculum and Instructional Services](#)
- [Special Education Services and Support](#)
- [Innovative Academic Programs](#)
- [Testing](#)

CONTACT INFORMATION



Laura Engle
Program Specialist
Career, Technical &
Agricultural Education
1752 Twin Towers East
205 Jesse Hill Jr. Drive SE

Culinary Arts

Program Concentration: Culinary Arts

- [Career Pathways](#)
 - [Culinary Arts](#)
- [Career Technical Student Organizations](#)
- [Equipment Lists](#)
- [Industry Certification Standards](#)
- [Lab Layouts](#)
- [Teacher Certification Requirements](#)
- [Unit Plans - GeorgiaStandards.org](#)
- [FAQS about Family and Consumer Sciences](#)

What It's About

Arts is a growing program in our schools across Georgia. This program is designed for those wanting to learn the "art" of cooking and for those wanting to continue in the Arts field in any of the many diverse opportunities: Sous Chef, Pastry Chef, Kitchen manager, Garde Manager, Banquet Chef, or a Restaurant Entrepreneur.

Resources

- [Culinary Arts OPS Training Presentation Winter Update 2008](#)
- [Culinary Arts Environment](#)

Web Resources

- [Georgia FOCLE](#)
- [National FOCLE](#)
- [Georgia FFA/FOCLA Camp](#)
- [Muscogee Co. High Schools Iron Chef](#)
- [Justice High School - Smoked Chicken Challenge](#)

[» More](#)

Culinary Arts Consultant

David Ross will be on special assignment this year to work with Culinary Arts teachers:

- Culinary Arts Endorsement, hosting workshops.
- Visiting schools to assist with industry certification preparation.
- Visiting schools to give Culinary Arts demonstrations.
- Visiting systems for Culinary Arts professional development.
- Work closely with FCCLA and industry partners on hosting numerous Culinary competitions and events.



Standards, Instruction and Assessment Career, Technical and Agricultural Education

Creating a world-class workforce for Georgia in the 21st Century.

DIVISIONS

- [Career, Technical and Agricultural Education Curriculum and Instructional Services](#)
- [Special Education Services and Support](#)
- [Innovative Academic Programs](#)
- [Testing](#)

CONTACT INFORMATION



James Woodard
Director, Career, Technical & Agricultural Education
1752 Twin Towers East
205 Jesse Hill Jr. Drive SE
Atlanta, GA 30334
☎ (404) 657-8904
☎ (404) 651-8984
✉ jwoodard@doe.k12.ga.us

[Staff Contact List](#)

[James Woodard Biography](#)

[Report Problems with this Page](#)

Program Concentration: Education

Career Pathways

- [Early Childhood Education](#)
- [Teaching As A Profession](#)

[Career Technical Student Organizations](#)
[Equipment Lists](#)
[Industry Certification Standards](#)
[Lab Designs](#)

Teacher Certification Requirements

- [Early Childhood Education](#)
- [Teaching](#)

[Unit Plans – Georgia Standards](#)

What It's About

The Education Program Concentration is designed for students who are interested in pursuing a career in the Education field. There are many diverse opportunities in Education, from a school administrator, school counselor, elementary school teacher, special needs teacher, secondary teacher, post secondary teacher, career and technical teacher, preschool teacher, paraprofessional – and the list continues. Students will have two career pathways to choose from: Early Childhood Education & Teaching as a Profession. These pathways will introduce the foundations of education, combined with knowledge and skills, gained in both the classroom and in the workplace, to prepare students for a career in Education.

Why It's Important

Education and how we can improve the education of our students is a major focus in Georgia, as well as many other states in the nation. The large number of educators that are at, or nearing the age of retirement, combined with the small number of teacher educators graduating from college, is a concern. These are reasons this Education Program Area is important – we need to start growing our own teachers in communities across Georgia.

Education Resources

- [Interactive GIS Training Presentation](#)
- [Winter Update 2008 presentation](#)

Education Archives

Education Web Resources

College & University Credit

- A recommendation from EPAAC (*Educator Preparation Academic Advisory Committee*) was approved to offer course credit for EDUC 2110 for those students who have successfully completed the Secondary Certificate in Education and Teaching in high school. (This is the 3 course pathway and assessment.) The final approval from the Board of Regents is expected in August.

Where do I find the new GPS?
(in addition to the Program webpages?)

Georgia Standards Website

[Http://www.georgiastandards.org](http://www.georgiastandards.org)

The screenshot shows the Georgia Standards Website homepage. At the top left is the Georgia Department of Education logo with the text "Georgia DEPARTMENT OF EDUCATION" and "Kathy Cox, State Superintendent of Schools". To the right is a navigation menu with links for Home, Introduction, English Lang., Mathematics, Social Studies, Science, and Training. Below the menu is a dropdown menu for English Language Arts (ELA) with options: ELA Standards, Executive Summary, ELA Introductory Video, ELA Frameworks, Lesson Plans & Matrices, ELA Program, and ELA Videos. A search bar is located on the right side of the page. Below the navigation is a banner for "GeorgiaStandards.Org One Stop Shop for Educators" with the tagline "GATEWAY TO EDUCATION | PROFESSIONAL RESOURCES". The main content area features a section for "High School Phase I Career Pathway Development" with sub-links for High School - Phase I, High School - Phase II, High School - Phase III, and Middle School - Phase I. Below this is a link for "Pathway Planning | Peach State Pathways: Education and Career Planning Tools". A sidebar on the left contains a "GPS WEBSITE FINDER" with links to "Emotional Learning", "G/C Lesson Plan Builder (Web)", and "Desktop Builder". Below that is a "CONTACT INFORMATION" section with contact details for Stephen Pruitt, Director of Academic Standards & Instructional Services.

Home Introduction English Lang. Mathematics Social Studies Science Training

GEORGIA DEPARTMENT OF EDUCATION
Kathy Cox, State Superintendent of Schools

Home » Career, Technical and Agricultural Education Standards

GeorgiaStandards.Org One Stop Shop for Educators
GATEWAY TO EDUCATION | PROFESSIONAL RESOURCES

GPS WEBSITE FINDER

- Emotional Learning
- G/C Lesson Plan Builder (Web)
- Desktop Builder

CONTACT INFORMATION

For General Information:
GSO Content
1002 Twin Towers East
205 Jesse Hill Jr. Drive SE
Atlanta, GA 30334
☎ (404) 463-1280
☎ (404) 807-5183
✉ standards@doe.k12.ga.us

Stephen Pruitt (Standards)
Director of Academic
Standards & Instructional
Services

High School Phase I Career Pathway Development

High School - Phase I High School - Phase II High School - Phase III Middle School - Phase I

Pathway Planning | Peach State Pathways: Education and Career Planning Tools

High School - Phase I Career Pathway Development

- CTAE Career Pathway Development
- CTAE Phase I Course Number Information
- Phase I Executive Summary
- Foundation Skills
- Phase I Pathway Framework
- CTAE Fourth Science Course Options and Guidance

Where do I find the existing curriculum frameworks that have not yet been written into GPS?

http://www.gadoe.org/ci_cta.aspx?PageReq=CICTAFrameworksReg

For courses: Consumer Services, Family Services, Interior Design, Foundations, Middle School



Helping students excel.
Georgia Department of Education



ADD CODE

Search

Home > [About GaDOE](#) > [Office of Standards, Instruction and Assessment](#) > [Career, Technical and Agricultural Education](#)

Standards, Instruction and Assessment Career, Technical and Agricultural Education

Creating a world-class workforce for Georgia in the 21st Century.

DESIGN

- [Career, Technical and Agricultural Education Curriculum and Instructional Services](#)
- [Special Education Services and Support](#)
- [Innovative Academic Programs](#)
- [Testing](#)

VISION

"To create a secondary profile of career readiness for Georgia."

CTAE Standards

- [Performance Standards](#)
 - [PROPOSED Phase III High School Performance Standards](#)
 - [PROPOSED Phase I Middle School Performance Standards](#)

Perkins Career and Technical Improvement Act

- [Public Review](#)

Program Delivery

- [Agriculture](#)
- [Architecture, Construction, Communication and Transportation](#)
- [Business and Computer Science](#)
- [CTSO Student Recognition](#)
- [Culinary Arts](#)
- [Education](#)
- [Family and Consumer Sciences](#)
- [Engineering and Technology](#)
- [Healthcare Science](#)
- [Marketing, Sales and Services](#)
- [Special Population](#)
- [Student Organizations](#)

Development and Transition

REVISIONS

- [June 2008](#)
- [May 2008](#)
- [April 2008](#)
- [January 2008](#)
- [November 2007](#)

[+ More](#)

PRESENTATIONS

- [CTAE, Agriculture, and Accountability Regional Update Spring 2008](#)
- [Development and Transition Program Delivery Regional Update Spring 2008](#)
- [Perkins IV Public Hearing Presentation](#)
- [CTSO and ECP Eliminate PowerPoint](#)
- [2007 Fall Region Updates](#)

[+ More](#)

OTHER LINKS

- [CTAE System Contact List](#)
- [Youth Apprenticeship Directory by Region Fall 2007](#)
- [Youth Apprenticeship Advisory Council Members 2007-2008](#)
- [Youth Apprenticeship Region Map](#)

TECHNOLOGY

- [CTAEM web site](#)
- [2007 New Georgia Career Related Education Manual](#)
- [Multistate Academic and Vocational Curriculum Consortium \(MAVCC\)](#)
- [Curriculum Frameworks](#)



CONTACT INFORMATION



James Woodard
Director, Career, Technical & Agricultural Education
1752 Twin Towers East
205 Jesse Hill Jr. Drive SE
Atlanta, GA 30334
☎ (404) 657-8904
☎ (404) 651-8864
✉ jwoodard@doe.k12.ga.us

[Staff Contact List](#)

[James Woodard Biography](#)

[Report Problems with this Page](#)

INDUSTRY CERTIFICATION FOR 08-09

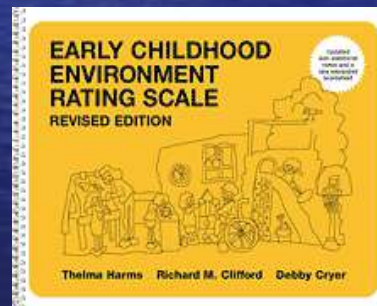
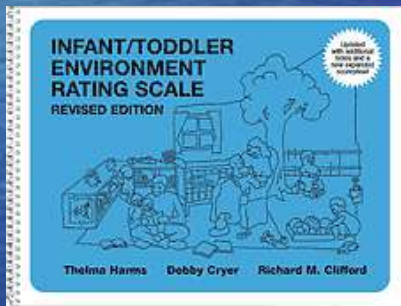
- We have 2 pathways that will have Industry Certification available this year:

Culinary & Early Childhood Education

ECE Industry Certification

- Available for all ECE programs whether they have an on-site or off-site lab.
- ITERS & ECERS

INFANT/TODDLER ENVIRONMENT RATING SCALE
EARLY CHILDHOOD ENVIRONMENT RATING SCALE



are the standards that will be used for onsite labs. GAYC will be the certifying partner.

Industry Certification

- **ECE:**

Chatham County

Savannah High School

Crisp County

Crisp Co. High School

Decatur City

Decatur High School

DeKalb County

DeKalb HS Technology North

DeKalb County

Avondale High School

Habersham County

Habersham Central High School

Henry County

Luella High School

Paulding County

Paulding Co. High School

Rockdale County

Rockdale Career Academy

Wilkes County

Washington-Wilkes High School

Culinary Arts Industry Certification

- Culinary Arts will use American Culinary Federation standards for certification and as the certifying industry partner.



Industry Certification

Culinary:

DeKalb County	Miller Grove High School
Gwinnett County	Grayson High School
Muscogee County	Jordan Vocational High
Rockdale County	Rockdale Career Academy

Other Industry Certification -

- We will begin to work on industry certification partners for Nutrition & Food Science, Interior Design and Consumer Services. We hope to have some of these in place next Spring.



ASSESSMENTS

Assessments, to be implemented 09-10.

- A team of post secondary, business/industry, CTAE teachers and CTAE Administrators will begin to work in the Fall on assessments for the following pathways:
 - Early Childhood Education
 - Teaching as a Profession
 - Culinary Arts

Assessments

- Unlike QCC's and curriculum frameworks, where there were too many to teach, and you had to pick and choose which one to teach, the new GPS are fewer, and it is important that you teach them all, especially when it comes to assessment.



CTAE Home Page –
What Else is there
for me?



Standards, Instruction and Assessment Career, Technical and Agricultural Education

Creating a world-class workforce for Georgia in the 21st Century.

DIVISIONS

- ◀ [Career, Technical and Agricultural Education](#)
- ◀ [Curriculum and Instructional Services](#)
- ◀ [Special Education Services and Support](#)
- ◀ [Innovative Academic Programs](#)
- ◀ [Testing](#)

CONTACT INFORMATION



James Woodard
Director, Career, Technical & Agricultural Education
1752 Twin Towers East
205 Jesse Hill Jr. Drive SE
Atlanta, GA 30334
(404) 657-8304
(404) 651-8984
jwoodard@doe.k12.ga.us

[Staff Contact List](#)

[James Woodard Biography](#)

[Report Problems with this Page](#)

VISION

"To create a secondary profile of career readiness for Georgia."

CTAE Standards

- [CTAE Reports](#)
- [Performance Standards](#)
 - [PROPOSED Phase III High School Performance Standards](#)
 - [PROPOSED Phase I Middle School Performance Standards](#)

Perkins Career and Technical Improvement Act

- [Public Review](#)

Program Delivery

- [Agriculture](#)
- [Architecture](#)
- [Construction](#)
- [Communication and Transportation](#)
- [Business and Computer Science](#)
- [CTSO Student Recognition](#)
- [Culinary Arts](#)
- [Education](#)
- [Family and Consumer Sciences](#)

NEWSLETTERS

- ◀ [June 2008](#)
- ◀ [May 2008](#)
- ◀ [April 2008](#)
- ◀ [January 2008](#)
- ◀ [November 2007](#)

» More

PRESENTATIONS

- ◀ [CTAE, Agriculture, and Accountability Regional Update Spring 2008](#)
- ◀ [Development and Transition Program Delivery Regional Update Spring 2008](#)
- ◀ [Perkins IV Public Hearing Presentation](#)
- ◀ [CTSO and ECP Illuminate PowerPoint](#)
- ◀ [2007 Fall Region Updates](#)

» More

DIRECTORIES

- ◀ [CTAE System Contact List](#)
- ◀ [Youth Apprenticeship Directory by Region Fall 2007](#)
- ◀ [Youth Apprenticeship Advisory Council Members 2007-2008](#)
- ◀ [Youth Apprenticeship Region Map](#)

Data & Reports



[Home](#)

[About GaDOE](#)

[State Board of Ed.](#)

[School Improvement](#)

[Curriculum](#)

[Data Reporting](#)

Georgia Schools

[Home](#) » [Georgia Schools](#) » All Districts

◀ 2006 - 2007 ▶

State of Georgia

Search Printer Friendly

Georgia Profile

Enrollment

Perkins IV

CTAE

2006-2007 CTAE : Career, Technical and Agriculture Education

The information for this area of the 2006-2007 school year is still being prepared for publication. Please check back again later.

NCLB / AYP

Report Card

Title I Annual Reports

Exceptional Students

Tutoring Services

2007 AYP

To meet AYP, each system and the state must meet the following criteria: 95% Participation, Academic Performance (Annual Measurable Objective), and Second Indicator. The system (or state) overview lists each school (or system) and indicates which AYP component the school/system met or did not meet.

State of Georgia



School System	Number of Schools	Meeting AYP	Not Meeting AYP	Meeting Test Participation	Meeting Academic Performance	Meeting Second Indicator
Appling	6	6 (100 %)	0 (100%)	6 (100%)	6 (100%)	6 (100%)
Atkinson County	3	2 (66.7%)	1 (33.3%)	3 (100%)	2 (66.7%)	3 (100%)
Atlanta Public	97	81 (83.5%)	16 (16.5%)	91 (93.8%)	79 (81.41%)	95 (97.9%)

Math Scores by Gender

State of Georgia



Search



Printer Friendly

Enrollment

Perkins IV

1S1 Reading/Language Arts

1S2 Mathematics

4S1 Graduation
Rate

2006-2007 CTAE : Career, Technical and Agriculture Education

Number of CTAE Concentrators who took the GHSGT

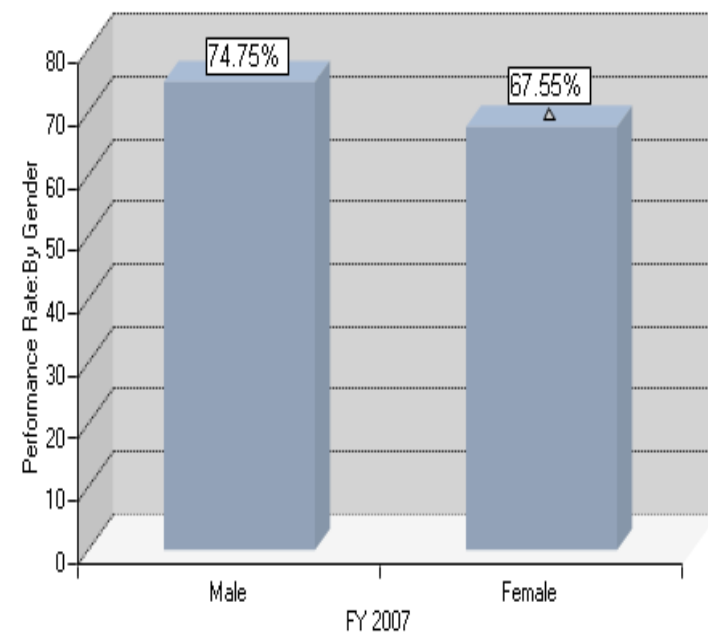
Male 13,974 Female 16,215

Number of CTAE Concentrators who Met or Exceeded

Male 10,445 Female 10,953

Rate of CTAE Concentrators who Met or Exceeded

Male 74.75% Female 67.55%



Graduation Rate Data



[Home](#)

[About GaDOE](#)

[State Board of Ed.](#)

[School Improvement](#)

[Curriculum](#)

[Data Reporting](#)

Georgia Schools

[Home](#) » [Georgia Schools](#) » All Districts

◀ 2006 - 2007 ▶

State of Georgia

Search Printer Friendly

Georgia Profile

Enrollment

Perkins IV

CTAE

1S1 Reading/Language Arts

1S2 Mathematics

4S1 Graduation Rate

2006-2007 CTAE : Career, Technical and Agriculture Education

NCLB / AYP

Report Card

Title I Annual Reports

Exceptional Students

Tutoring Services

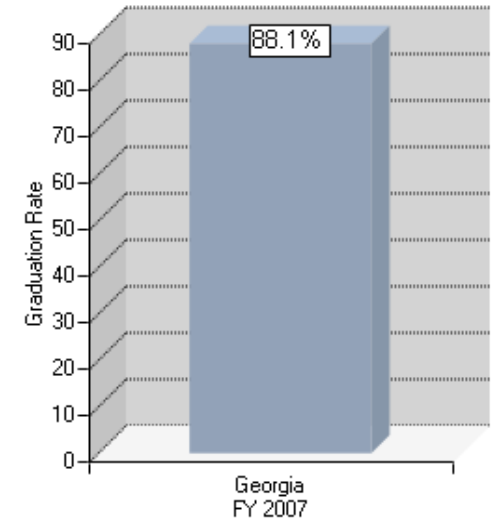
FY 2007

Graduation Rate: All CTAE Concentrators

Total Graduates with Reg Ed Diploma 29,975

Graduation Class Size 34,015

Graduation Rate Georgia 88.10%





PROGRAMS
OF WORK

Extended Day Grants

- The extended day, programs of work have changed. More emphasis is on the CTSO and Career Related Opportunities.
- Due to the large number of requests for extended day funding, and the shortage of requested funds available, we have had to define the number of ctsO affiliated members required to receive funding.

Family, Career and Community

FCCLA®

Leaders of America

**The Ultimate
Leadership
Experience**

- Vickie Rundbaken, Executive Director
vrundbaken@doe.k12.ga.us
- Shannon Aaron, Director of Business & Industry Partnerships
gafcclafoundation@gmail.com



FCCLA Camp Grants

- 110 grants were approved for FY 08, however all recipients did not use them.
- 132 grants were approved for next year, FY 09.
- Camp grants may not conflict with post planning or extended year activities, as you are already being paid for those dates.
- Must meet all the guidelines to receive the funds.

FCCLA News

- There will be 2 new events next year, one will focus on “Teaching” and one will focus on “FCCLA Promotion”.
- The new STAR Events manual will be available online around September 15th.
- There will be a Fall Conference, in addition to the Fall Rally this year.
- There will be regional workshops, for teachers to receive FCCLA professional development.

FCCLA News

- Had over 200 delegates attend the National FCCLA Leadership Meeting in Orlando last week.
- Georgia proudly brought back:
 - 30 Gold Medals!
 - 28 Silver Medals!
 - 0 Bronze Medals!

FCCLA Foundation is

- Working on Business/Industry Sponsorship to attend National Meeting.
- Still accepting Charter Donors through the end of the GACTE Conference. You can donate – it is tax deductible!
- \$35 and receive a pin, \$50 a pin and your name on the charter donor plaques to be placed in the FCCLA Archives at Camp.
- Big thanks to the GATFACS Board for their generous donation of \$1000!

FCCLA News

- Georgia has been the largest state affiliation in the Nation the last 3 years, and our goal is to not only increase membership this year, but also the number of chapters. If you are interested in starting an FCCLA chapter, please contact Vickie Rundbaken for further details.

Welcome to the CTAE Resource Network Web Portal.

The CTAE Resource Network, Inc. is a non-profit Consortium of Georgia Public Schools.



Login

Enter your password to login.

Password:

Remember me



1-866-454-2823. If the assistant is unavailable, please leave two telephone numbers and the preferred times to return your call: Day phone number and a time to call and your Cell phone number and a time to call. We have experienced some difficulty in returning calls -- given the heavy telephone volume at schools and teacher instruction schedules. If you do not receive a return call within 48 hours, please call again. If you still have difficulty contacting us, please e-mail: hotline@ctaern.org.

Instructor Application

Workshop
Instructor
application &
potential
workshop
needs



CTAE Resource Network

General
Information



Nursing Assistants

Lesson plans
for the GMCF
Nursing
Assistant
Certification
course



CTAERN

- New profile by program areas – register as soon as you return to school, that is the only means of sending emails I will use.
- Stay tuned...workshops will be added over the course of the year. Please let me know what professional learning you would like to see, and I will try to accommodate your requests.

PLU's

- Many must have **prior** approval from your system for them to honor the PLU you received from a workshop. Some may just need to turn in the PLU after the fact to receive the credit. Check with your system for their policy.
- Certificates of participation need to be handled, as per your system policy, to earn PLU's.

GATEAACS



GATFACS

- There are some positions that are rotating off this year:

Region 5 Vice Presidents.

Region 6 Vice Presidents.

President Elect.

GATFACS Representative on the FCCLA Board

- Please keep in mind, you must be a member of GACTE for the last 3 consecutive years to hold a position.

- Pam Haire is chair for the nominating committee, and she will be nominating persons for those open positions.
- If you are interested in any on these positions, please see Pam Haire immediately after this session.

The Annual
GATFACS/DOE
Winter Conference is
tentatively set for
January 29-31, 2009.
More details will be
announced early
August.

The logo for GATFACS features the word "GATFACS" in a bold, blue, serif font. A green, curved line loops around the letters, starting from the bottom left and ending at the top right, partially overlapping the letters.

Presenters / Workshops

- I am now reviewing possible presenters for the Winter Conference. If you are interested in hosting a workshop, please contact me.
- If you have recommendations for workshops or sessions, please send those ideas to me too.
- I am trying to secure a location that will have room for each pathway to have a room for their specific pathway sessions.

GEORGIA ASSOCIATION of FAMILY & CONSUMER SCIENCES

- The annual GAFCS Conference will be held March 26-28, 2009 in Savannah this year.
- This year's conference will be held with the Florida Association of Family & Consumer Sciences.
- Conference registration forms are available from Carmen Eiserman.

ANNOUNCEMENTS

- Please join us Tuesday evening for a night of Motown! And a retirement celebration for Marvin Brown, COO of the CTAERN. Thanks to the GATFACS affiliate for their generous contribution of \$501 to Marvin's retirement gift.
- Anyone introducing a presenter today, please see me following this session for presenter gifts to hand out at the end of the session. Evaluation forms will be available online at the GACTE website.
- I encourage you to network and sit with some teachers you do not know. There is so much we can learn from each other!

The image features a serene sunset over a vast ocean. The sky is a deep, vibrant blue, with wispy white clouds scattered across it. The sun is positioned on the left side of the horizon, creating a bright, glowing effect that transitions from yellow to orange and then to a soft blue. The ocean below is a rich, dark blue, with gentle ripples on its surface. The word "QUESTIONS" is prominently displayed in the center of the image, rendered in a bold, blue, serif font with a subtle drop shadow effect.

QUESTIONS

THANK YOU FOR ALL YOU DO!
IF I CAN ASSIST YOU IN ANY
WAY AT THE CONFERENCE,
OR AS THE SCHOOL YEAR
STARTS, PLEASE DON'T
HESITATE TO CONTACT ME.