



# 2015-2016 Delaware Dropout Summary Statistics

March 2017



*Report Prepared by:*

Delaware Department of Education  
401 Federal Street, Suite 2  
Dover, Delaware 19901

**State Board of Education**

Teri Quinn Gray, Ph.D., President  
Nina Lou Bunting, Vice President  
Gregory B. Coverdale, Jr.  
G. Patrick Heffernan  
Barbara Rutt, J.D.  
Terry M. Whittaker, Ed.D.  
Donna Johnson, Executive Director  
Susan Bunting, Executive Secretary

**Officers of the Department of Education**

**Susan Bunting**

Secretary of Education

**Karen Field Rogers**

Deputy Secretary of Education

**Amelia E. Hodges**

Associate Secretary of Education  
Adult Education and School Supports

**David Blowman**

Associate Secretary of Education  
Financial Management and Operations

**Angeline Rivello**

Associate Secretary of Education  
Teacher and Leader Effectiveness Branch

**Michael Watson**

Associate Secretary of Education  
Teaching and Learning

The Department of Education is an equal opportunity employer. It does not discriminate on the basis of race, color, religion, national origin, sex, sexual orientation, gender identity, marital status, disability, age, genetic information, or veteran's status in employment or its programs and activities. Inquiries should be directed to the Department's Human Resource Officer, 401 Federal Street, Suite 2, Dover, Delaware 19901. Telephone Number: (302) 735-4030.

**Ensuring Confidentiality of Individual Student Data**

The Delaware Department of Education is legally required to protect the confidentiality of data that could be used to identify individual students. Legal requirements for protecting the data are detailed in the Family Education Rights and Privacy Act (FERPA) (20 U.S.C. § 1232G; 34 CFR Part 99). FERPA requires that these data be protected to ensure they cannot be used to identify the attributes of any individual student. Beyond the natural barriers to precise identification, including differential time frames and net transfer effects, additional disclosure mitigation methods have been applied to these data to ensure confidentiality.

## Executive Summary

The Delaware Department of Education (DDOE) report on dropouts is from data collected annually. Delaware collects data from all public schools including grades 7 through 12, but calculates the yearly dropout rate from grades 9 through 12, as is prescribed by the National Center for Educational Statistics (NCES), which provides data to the federal reporting system.

In accordance with NCES requirements, Delaware uses the *event dropout rate*, which measures the proportion of students who drop out in a single school year. This is the rate the State has reported since 1994. See Appendix A for additional details about the dropout calculation.

This report does not contain data reflecting private, parochial, or home school students in Delaware. The State does gather information from families that home school their children as well as from private schools, but only does so to verify the transfer of a student from public to private and home schools.

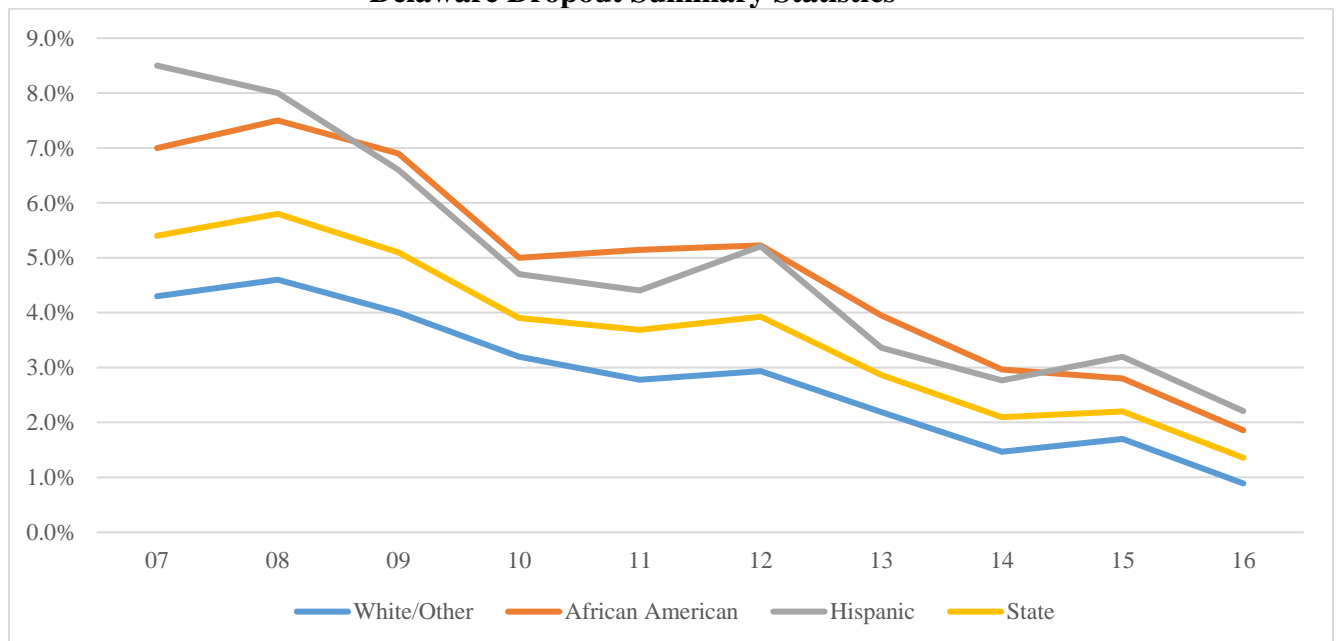
## Highlights

- Last year, out of 40,287 students enrolled in grades 9-12, 547 students left school.
- The statewide annual dropout rate for school year 2015-2016 was 1.4%. This is a decrease from school year 2014-2015 when the dropout rate was 2.2%.
- Of the 547 dropouts, 61.4% were male and 38.6% were female.
- During the 2015-2016 school year, 1.9% of African American, 2.2% of Hispanic and 0.9% of White/Other students dropped out.
- The largest number of dropouts were from students enrolled in the 9th grade (188 students or 34.4%). Students enrolled in 12th grade represented the lowest proportion of students who dropped out (78 students or 14.3%).
- Academic, personal and economic reasons were cited by students as the reasons they dropped out.

**Table 1**  
**Delaware Dropout Summary Statistics**

	13-14 Dropout Rate	14-15 Dropout Rate	15-16 Dropout Rate
<b>Total Dropouts</b>	817	817	547
<b>Total Rate</b>	2.1%	2.2%	1.4%
<u>Sex</u>			
Male	2.4%	2.6%	1.7%
Female	1.8%	1.8%	1.0%
<u>Race/Ethnicity</u>			
American Indian	1.9%	4.0%	2.7%
African American	3.0%	2.8%	1.9%
Asian	1.3%	0.3%	0.2%
Hispanic	2.8%	3.2%	2.2%
White/Other	1.5%	1.7%	0.9%
Hawaiian		7.5%	2.2%
Multiracial		2.0%	0.8%
<u>Age</u>			
Less than 15	0.5%	0.5%	0.2%
Age 15	0.7%	0.9%	0.7%
Age 16	1.9%	2.0%	1.2%
Age 17 and over	5.6%	5.6%	3.5%

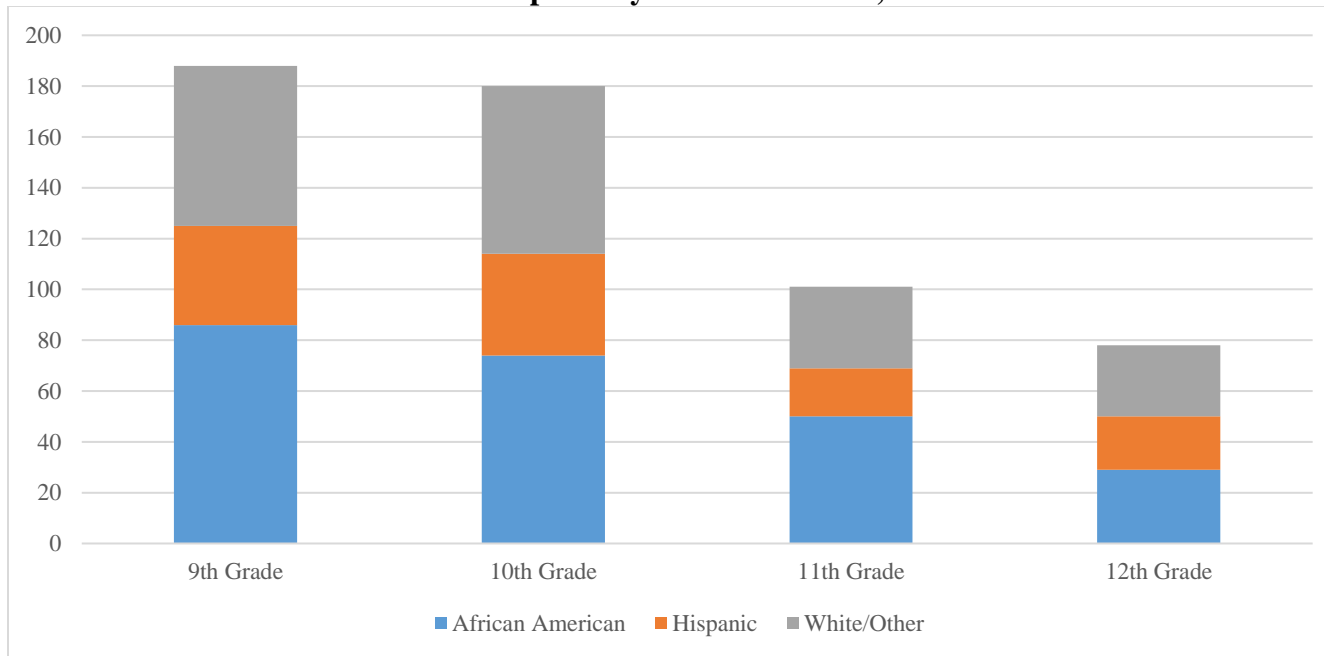
**Figure 1**  
**Delaware Dropout Summary Statistics**



**Table 2**  
**Dropouts by Race and Grade, 2015-2016**

Grade	African American			Hispanic			White/Other			All		
	Total Students	Dropout Students	Dropout Rate	Total Students	Dropout Students	Dropout Rate	Total Students	Dropout Students	Dropout Rate	Total Students	Dropout Students	Dropout Rate
9	3,988	86	2.2%	1655	39	2.4%	5,915	63	1.1%	11,558	188	1.6%
10	3,465	74	2.1%	1497	40	2.7%	5,758	66	1.1%	10,720	180	1.7%
11	2,707	50	1.8%	1186	19	1.6%	5,291	32	0.6%	9,184	101	1.1%
12	2,709	29	1.1%	1052	21	2.0%	5,064	28	0.6%	8,825	78	0.9%
<b>Total</b>	<b>12,869</b>	<b>239</b>	<b>1.9%</b>	<b>5,390</b>	<b>119</b>	<b>2.2%</b>	<b>22,028</b>	<b>189</b>	<b>0.9%</b>	<b>40,287</b>	<b>547</b>	<b>1.4%</b>

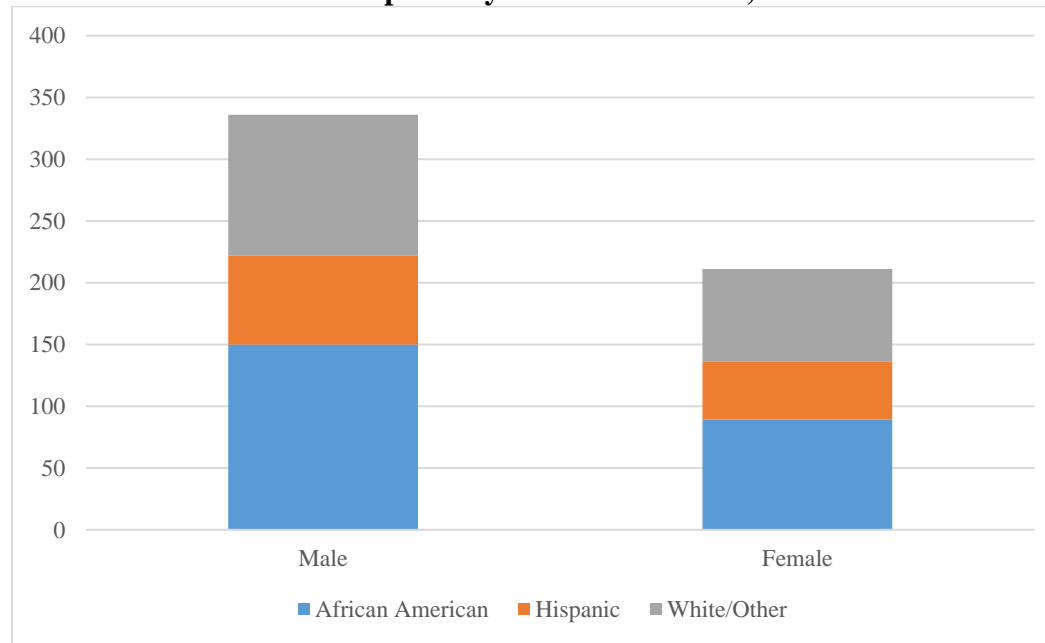
**Figure 2**  
**Number of Dropouts by Race and Grade, 2015-2016**



**Table 3**  
**Dropouts by Race and Gender, 2015-2016**

Gender	African American			Hispanic			White/Other			All		
	Total Students	Dropout Students	Dropout Rate	Total Students	Dropout Students	Dropout Rate	Total Students	Dropout Students	Dropout Rate	Total Students	Dropout Students	Dropout Rate
Male	6,364	150	2.4%	2,660	72	2.7%	10,615	114	1.1%	19,639	336	1.7%
Female	6,505	89	1.4%	2,730	47	1.7%	11,413	75	0.7%	20,648	211	1.0%
<b>Total</b>	<b>12,869</b>	<b>239</b>	<b>1.9%</b>	<b>5,390</b>	<b>119</b>	<b>2.2%</b>	<b>22,028</b>	<b>189</b>	<b>0.9%</b>	<b>40,287</b>	<b>547</b>	<b>1.4%</b>

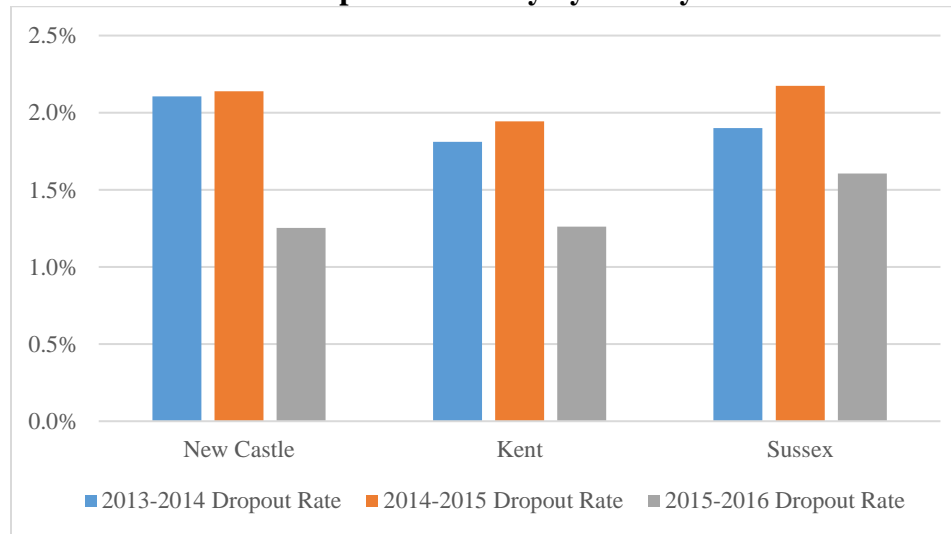
**Figure 3**  
**Number of Dropouts by Race and Gender, 2015-2016**



**Table 4**  
**Dropout Summary by County**

County	2013-2014 Dropout Rate	2014-2015 Dropout Rate	2015-2016 Dropout Rate	<b>2014-2016 3-Year Average Dropout Rate</b>
New Castle	2.1%	2.1%	1.3%	<b>1.8%</b>
Kent	1.8%	1.9%	1.3%	<b>1.7%</b>
Sussex	1.9%	2.2%	1.6%	<b>1.9%</b>

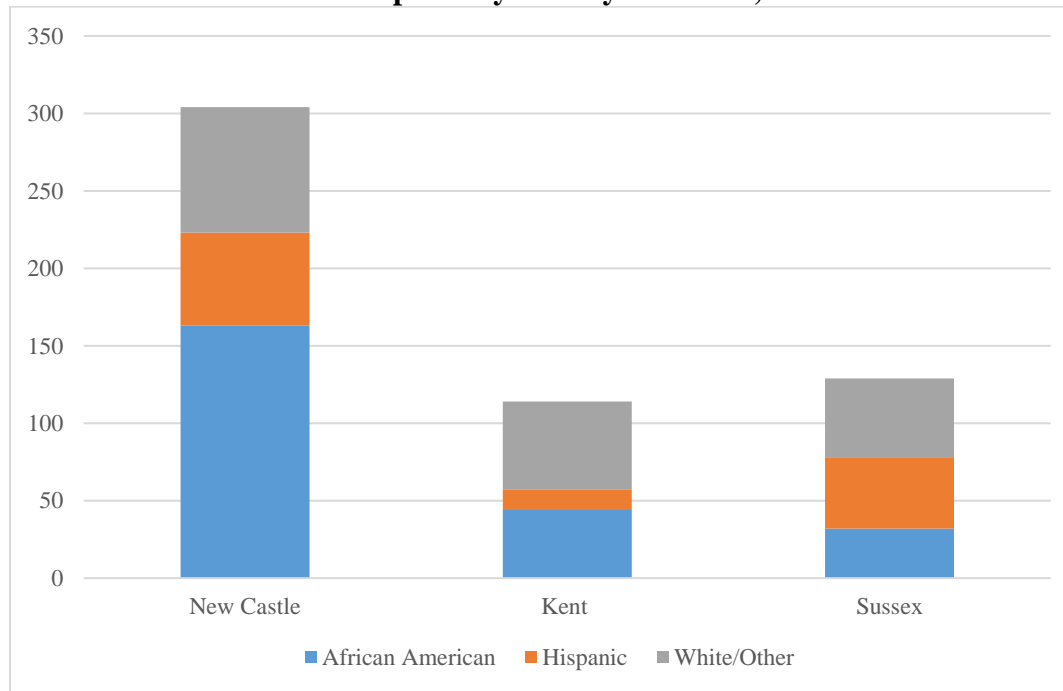
**Figure 4**  
**Dropout Summary by County**



**Table 5**  
**Dropouts by County and Race, 2015-2016**

County	African American			Hispanic			White/Other			All		
	Total Students	Dropout Students	Dropout Rate	Total Students	Dropout Students	Dropout Rate	Total Students	Dropout Students	Dropout Rate	Total Students	Dropout Students	Dropout Rate
New Castle	8,335	163	2.0%	3347	60	1.8%	11,518	81	0.7%	23,200	304	1.3%
Kent	3,027	44	1.5%	734	13	1.8%	5,288	57	1.1%	9,049	114	1.3%
Sussex	1,507	32	2.1%	1309	46	3.5%	5,222	51	1.0%	8,038	129	1.6%
<b>Total</b>	<b>12,869</b>	<b>239</b>	<b>1.9%</b>	<b>5,390</b>	<b>119</b>	<b>2.2%</b>	<b>22,028</b>	<b>189</b>	<b>0.9%</b>	<b>40,287</b>	<b>547</b>	<b>1.4%</b>

**Figure 5**  
**Number of Dropouts by County and Race, 2015-2016**

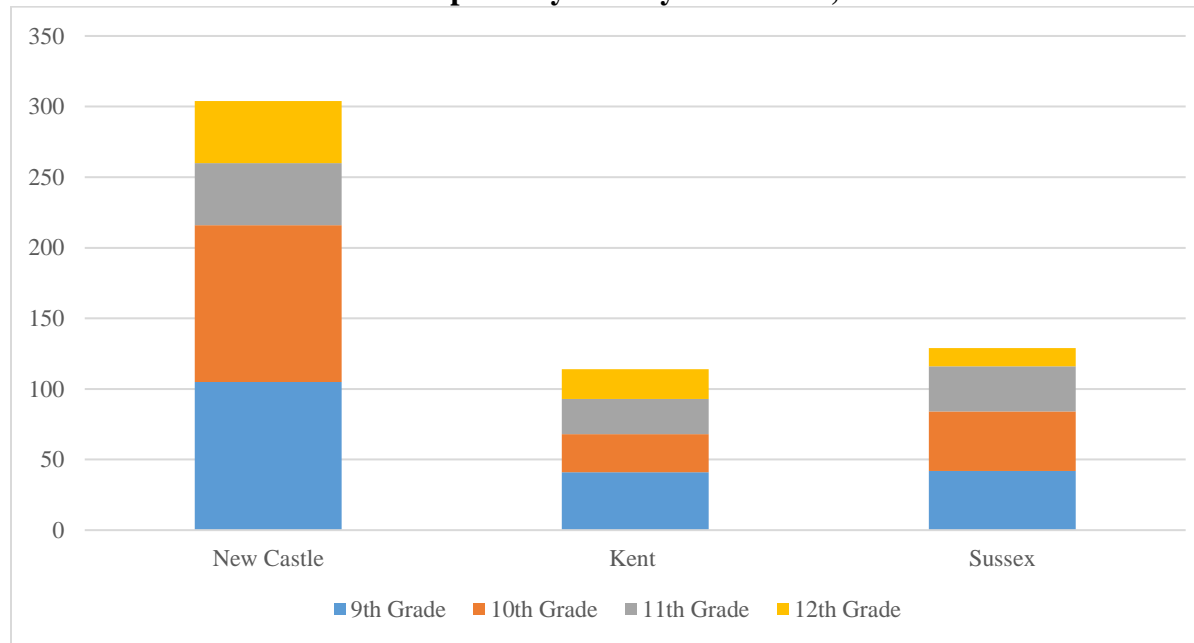




**Table 6**  
**Dropouts by County and Grade, 2015-2016**

County	9th			10th			11th			12th			Total Students		
	Total Students	Dropout Students	Dropout Rate	Total Students	Dropout Students	Dropout Rate	Total Students	Dropout Students	Dropout Rate	Total Students	Dropout Students	Dropout Rate	Total Students	Dropout Students	Dropout Rate
New Castle	6,619	105	1.6%	6213	111	1.8%	5,251	44	0.8%	5,117	44	0.9%	23,200	304	1.3%
Kent	2,638	41	1.6%	2411	27	1.1%	2,004	25	1.2%	1,996	21	1.1%	9,049	114	1.3%
Sussex	2,301	42	1.8%	2096	42	2.0%	1,929	32	1.7%	1,712	13	0.8%	8,038	129	1.6%
<b>Total</b>	<b>11,558</b>	<b>188</b>	<b>1.6%</b>	<b>10,720</b>	<b>180</b>	<b>1.7%</b>	<b>9,184</b>	<b>101</b>	<b>1.1%</b>	<b>8,825</b>	<b>78</b>	<b>0.9%</b>	<b>40,287</b>	<b>547</b>	<b>1.4%</b>

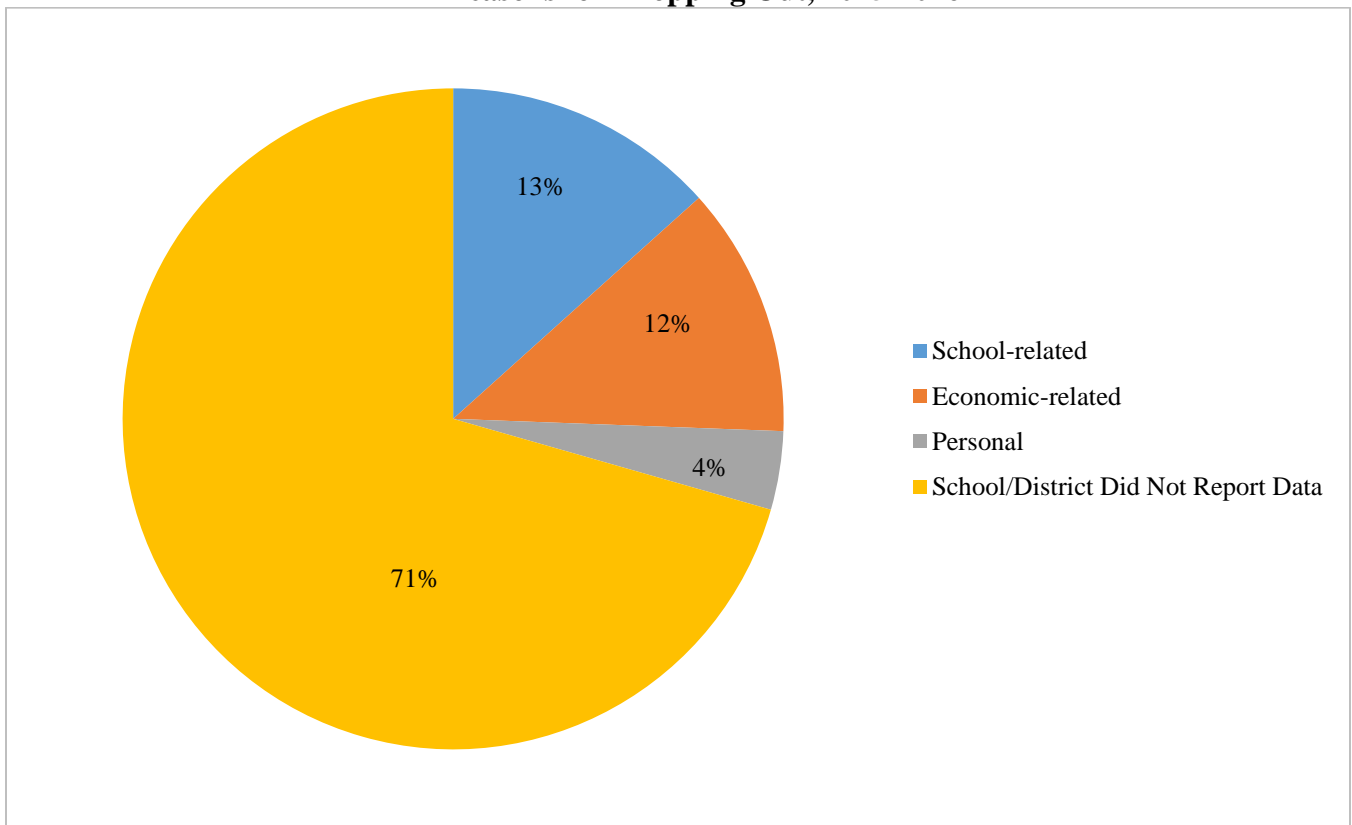
**Figure 6**  
**Number of Dropouts by County and Grade, 2015-2016**



**Table 7**  
**Reasons for Dropping Out, 2015-2016**

Reason	Number	Percent
School-related	73	13.3%
Economic-related	67	12.2%
Personal	21	3.8%
School/District Did Not Report Data	386	70.6%
<b>Total</b>	<b>547</b>	<b>100%</b>

**Figure 7**  
**Reasons for Dropping Out, 2015-2016**

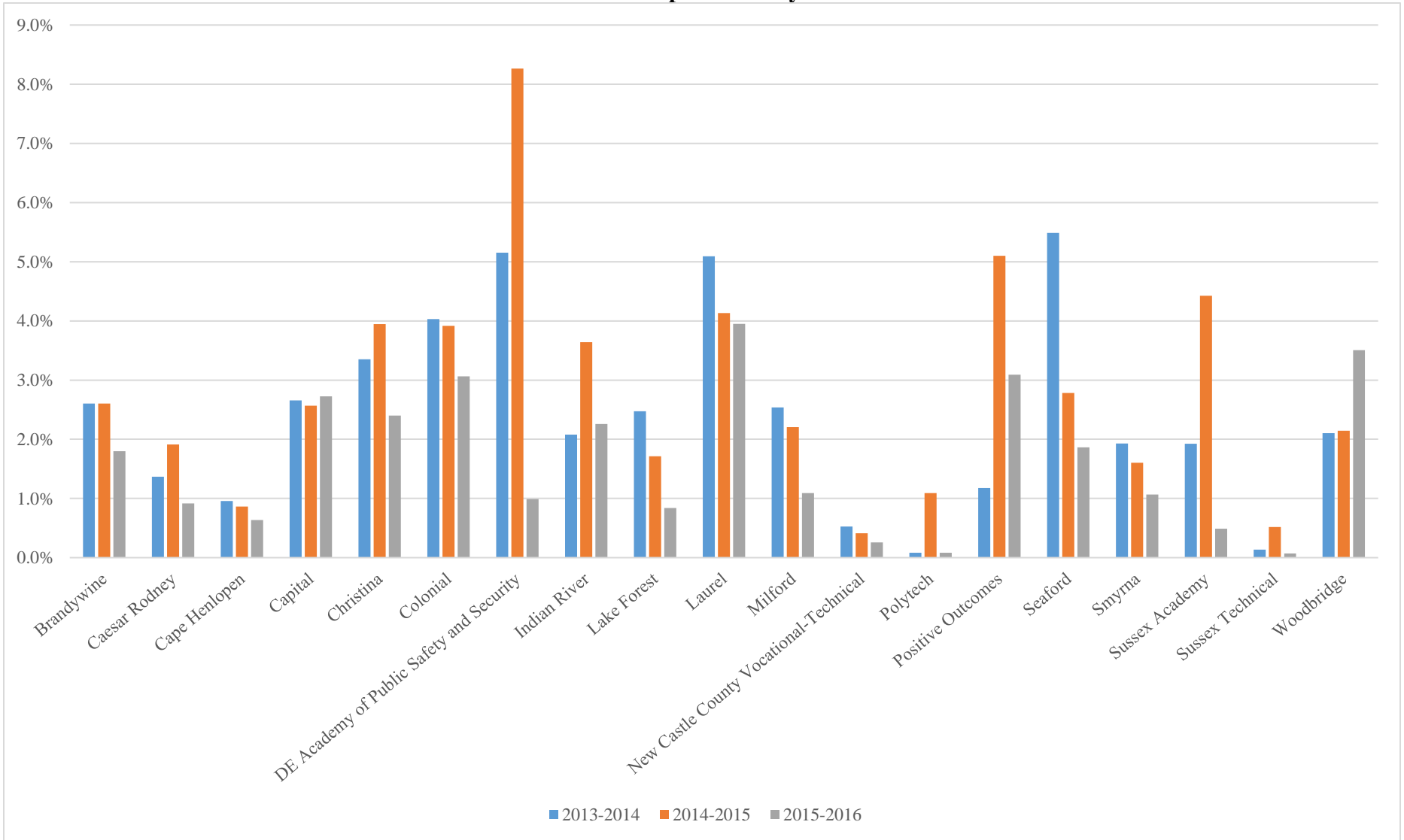


**Table 8**  
**Annual Dropout Rate by District**

District/Charter	2013-2014 Dropout Rate	2014-2015 Dropout Rate	2015-2016 Dropout Rate	<b>2014-2016 3-Year Average Dropout Rate</b>
Appoquinimink	0.8%	0.8%	0.3%	<b>0.6%</b>
Brandywine	2.6%	2.6%	1.8%	<b>2.3%</b>
Caesar Rodney	1.4%	1.9%	0.9%	<b>1.4%</b>
Cape Henlopen	1.0%	0.9%	0.6%	<b>0.8%</b>
Capital	2.7%	2.6%	2.7%	<b>2.6%</b>
Christina	3.4%	3.9%	2.4%	<b>3.3%</b>
Colonial	4.0%	3.9%	3.1%	<b>3.7%</b>
DE Academy of Public Safety and Security	5.2%	8.3%	1.0%	<b>5.0%</b>
Delmar	0.8%	1.3%	1.1%	<b>1.0%</b>
Indian River	2.1%	3.6%	2.3%	<b>2.7%</b>
Lake Forest	2.5%	1.7%	0.8%	<b>1.7%</b>
Laurel	5.1%	4.1%	4.0%	<b>4.4%</b>
Milford	2.5%	2.2%	1.1%	<b>2.0%</b>
New Castle County Vocational-Technical	0.5%	0.4%	0.3%	<b>0.4%</b>
Polytech	0.1%	1.1%	0.1%	<b>0.4%</b>
Positive Outcomes	1.2%	5.1%	3.1%	<b>3.2%</b>
Red Clay (includes Charter School of Wilmington and Delaware Military Academy)	2.0%	1.7%	0.9%	<b>1.5%</b>
Seaford	5.5%	2.8%	1.9%	<b>3.3%</b>
Smyrna	1.9%	1.6%	1.1%	<b>1.5%</b>
Sussex Academy	1.9%	4.4%	0.5%	<b>1.9%</b>
Sussex Technical	0.1%	0.5%	0.1%	<b>0.2%</b>
Woodbridge	2.1%	2.1%	3.5%	<b>2.6%</b>

Note: Special Schools and ILCs **are included** in district dropout summary statistics.  
3-Year Dropout Rates are calculated for schools with 3 years of data and three-year enrollment totaling at least 150 students.

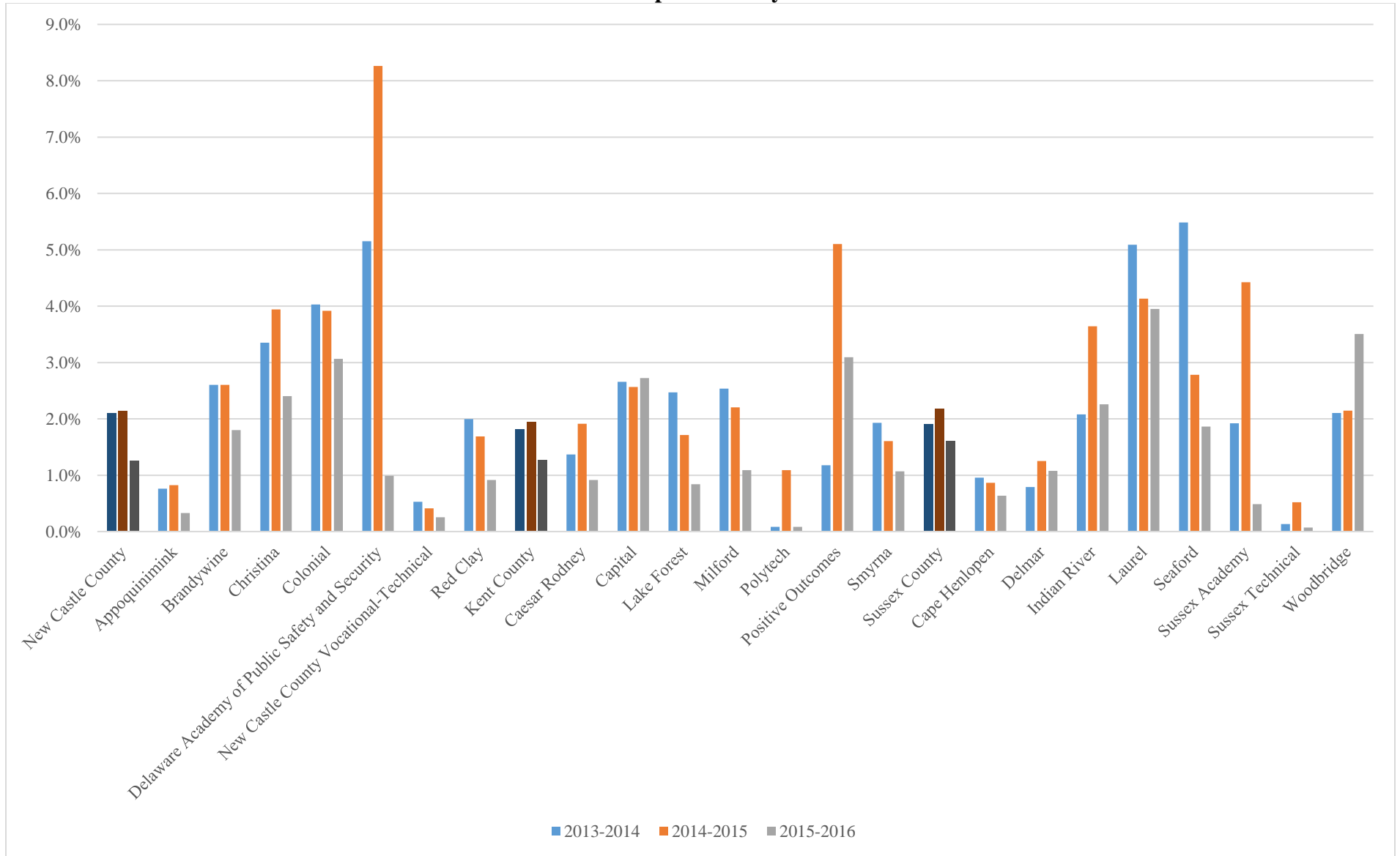
**Figure 8**  
**Annual Dropout Rate by District**



**Table 9**  
**Dropout Rate by District and County**

<b>DISTRICT/CHARTER</b>	<b>2013-2014</b>	<b>2014-2015</b>	<b>2015-2016</b>	<b>2014-2016 3-Year Average Dropout Rate</b>
<b>New Castle County</b>	<b>2.1%</b>	<b>2.1%</b>	<b>1.3%</b>	<b>1.8%</b>
Appoquinimink	0.8%	0.8%	0.3%	0.6%
Brandywine	2.6%	2.6%	1.8%	2.3%
Christina	3.4%	3.9%	2.4%	3.3%
Colonial	4.0%	3.9%	3.1%	3.7%
Delaware Academy of Public Safety and Security	5.2%	8.3%	1.0%	5.0%
New Castle County Vocational-Technical	0.5%	0.4%	0.3%	0.4%
Red Clay	2.0%	1.7%	0.9%	1.5%
<b>Kent County</b>	<b>1.8%</b>	<b>1.9%</b>	<b>1.3%</b>	<b>1.7%</b>
Caesar Rodney	1.4%	1.9%	0.9%	1.4%
Capital	2.7%	2.6%	2.7%	2.6%
Lake Forest	2.5%	1.7%	0.8%	1.7%
Milford	2.5%	2.2%	1.1%	2.0%
Polytech	0.1%	1.1%	0.1%	0.4%
Positive Outcomes	1.2%	5.1%	3.1%	3.2%
Smyrna	1.9%	1.6%	1.1%	1.5%
<b>Sussex County</b>	<b>1.9%</b>	<b>2.2%</b>	<b>1.6%</b>	<b>1.9%</b>
Cape Henlopen	1.0%	0.9%	0.6%	0.8%
Delmar	0.8%	1.3%	1.1%	1.0%
Indian River	2.1%	3.6%	2.3%	2.7%
Laurel	5.1%	4.1%	4.0%	4.4%
Seaford	5.5%	2.8%	1.9%	3.3%
Sussex Academy	1.9%	4.4%	0.5%	1.9%
Sussex Technical	0.1%	0.5%	0.1%	0.2%
Woodbridge	2.1%	2.1%	3.5%	2.6%

**Figure 9**  
**Annual Dropout Rate by District**



**Table 10**  
**Annual Dropout Rate by School**

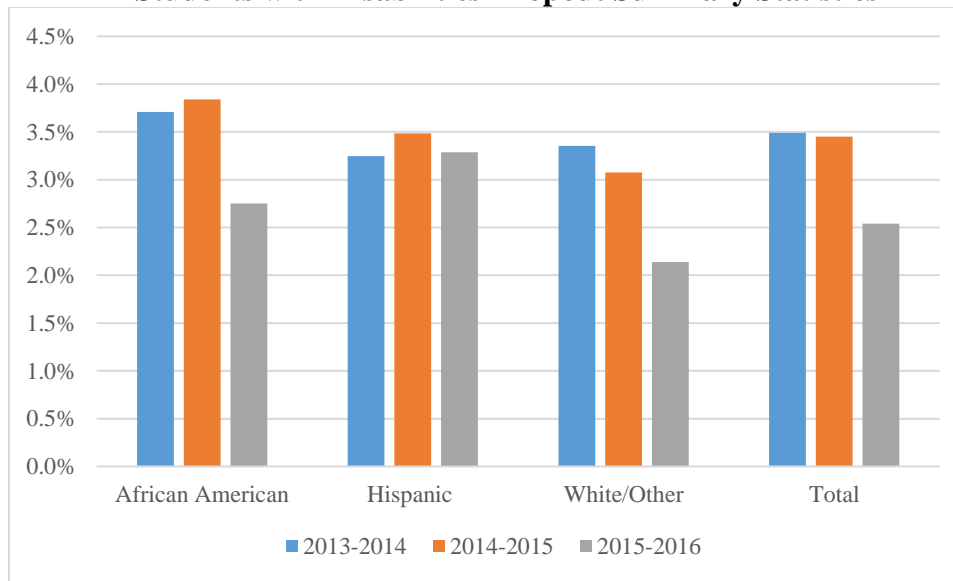
	<b>2013-2014</b>	<b>2014-2015</b>	<b>2015-2016</b>
<b>High Schools</b>	<b>Dropout Rate</b>	<b>Dropout Rate</b>	<b>Dropout Rate</b>
A. I. duPont High	3.3%	1.5%	0.9%
Appoquinimink High	0.7%	0.8%	0.4%
Brandywine High	5.0%	2.9%	2.2%
Caesar Rodney High	1.4%	1.8%	0.9%
Callaway School of the Arts	0.0%	0.0%	0.0%
Cape Henlopen High	0.8%	0.7%	0.6%
Charter School of Wilmington	0.5%	0.2%	0.1%
Christiana High	3.5%	5.7%	1.4%
Concord High	1.8%	1.8%	2.6%
Conrad School of Science	0.2%	0.0%	0.0%
Delaware Academy of Public Safety and Security	5.2%	8.3%	1.0%
Delaware Military Academy	0.2%	0.9%	0.2%
Delcastle Technical High	0.7%	0.2%	0.2%
Delmar High	0.8%	1.3%	1.1%
Dickinson High	4.3%	5.7%	3.5%
Dover High	1.5%	2.1%	1.5%
Early College High at DSU	---	10.1%	0.0%
Glasgow High	3.0%	2.6%	2.4%
Hodgson Vocational Technical High	0.7%	0.5%	0.4%
Howard High School of Technology	0.7%	1.2%	0.3%
Indian River High	1.6%	0.7%	0.7%
Lake Forest High	2.1%	1.7%	0.8%
Laurel High	5.0%	4.0%	4.0%
McKean High	3.0%	3.0%	1.3%
Middletown High	0.9%	0.9%	0.2%
Milford High	2.5%	2.2%	1.1%
MOT Charter School	---	1.2%	0.0%
Mount Pleasant High	1.4%	3.1%	0.7%
Newark Charter	0.0%	0.3%	0.0%
Newark High	1.9%	3.0%	1.2%
Polytech High	0.1%	1.1%	0.1%
Positive Outcomes	1.2%	5.1%	3.1%
Seaford High	5.6%	2.8%	1.9%
Smyrna High	1.9%	1.6%	1.1%
St. Georges Technical High	0.0%	0.0%	0.1%
Sussex Academy	1.9%	4.4%	0.5%
Sussex Central High	2.2%	4.9%	3.5%
Sussex Technical High	0.1%	0.5%	0.1%
William Penn High	3.6%	2.7%	2.5%
Woodbridge High	2.1%	2.1%	3.5%

Note: Special Schools and ILCs are **NOT** included in this table. All schools include grades 9 to 12.

**Table 11**  
**Students with Disabilities Dropout Summary Statistics**

Race/Ethnicity	2013-2014			2014-2015			2015-2016		
	Total Enrolled	Total Dropout	Dropout Rate	Total Enrolled	Total Dropout	Dropout Rate	Total Enrolled	Total Dropout	Dropout Rate
African American	2,265	84	3.7%	2,397	92	3.8%	2,543	70	2.8%
Hispanic	616	20	3.2%	660	23	3.5%	730	24	3.3%
White/Other	2,474	83	3.4%	2,535	78	3.1%	2,713	58	2.1%
<b>Total</b>	<b>5,355</b>	<b>187</b>	<b>3.5%</b>	<b>5,592</b>	<b>193</b>	<b>3.5%</b>	<b>5,986</b>	<b>152</b>	<b>2.5%</b>

**Figure 10**  
**Students with Disabilities Dropout Summary Statistics**

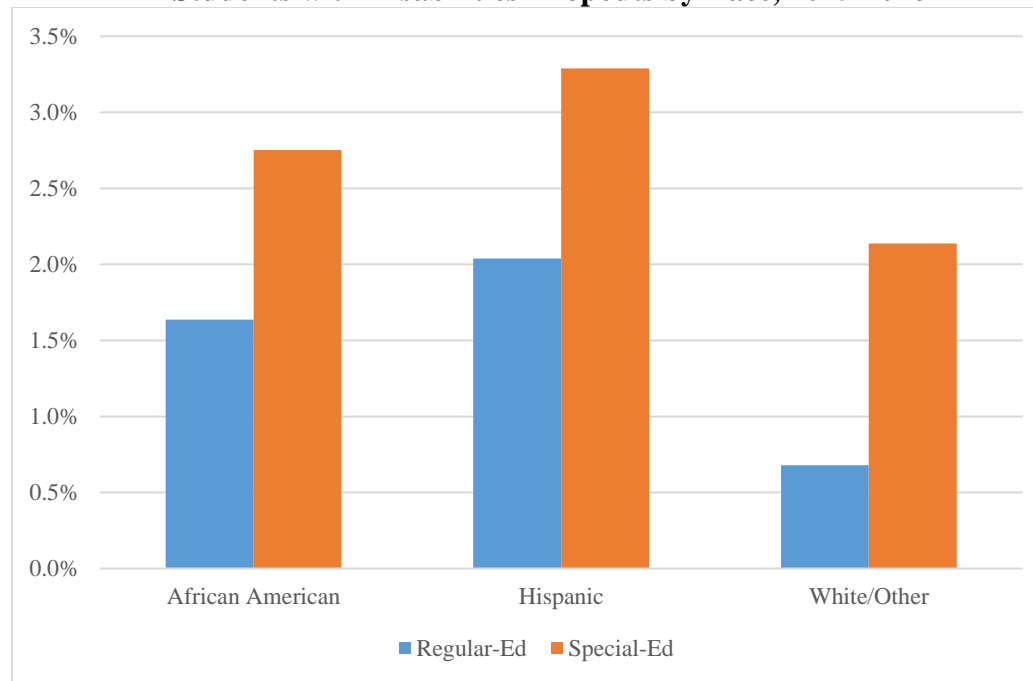




**Table 12**  
**Students with Disabilities Dropouts by Race, 2015-2016**

	African American			Hispanic			White/Other			All		
	Total Students	Dropout Students	Dropout Rate	Total Students	Dropout Students	Dropout Rate	Total Students	Dropout Students	Dropout Rate	Total Students	Dropout Students	Dropout Rate
Regular-Ed	10,326	169	1.6%	4660	95	2.0%	19,315	131	0.7%	34,301	395	1.2%
Special-Ed	2,543	70	2.8%	730	24	3.3%	2,713	58	2.1%	5,986	152	2.5%
<b>Total</b>	<b>12,869</b>	<b>239</b>	<b>1.9%</b>	<b>5,390</b>	<b>119</b>	<b>2.2%</b>	<b>22,028</b>	<b>189</b>	<b>0.9%</b>	<b>40,287</b>	<b>547</b>	<b>1.4%</b>

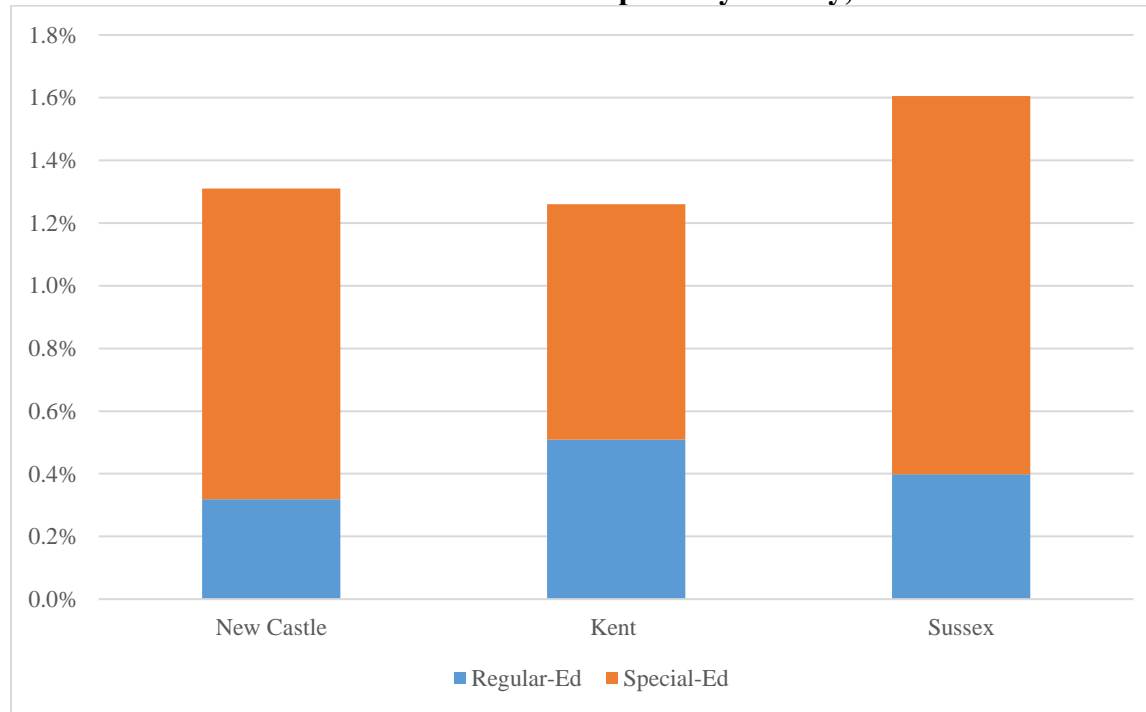
**Figure 11**  
**Students with Disabilities Dropouts by Race, 2015-2016**



**Table 13**  
**Students with Disabilities Dropouts by County, 2015-2016**

County	Enrolled			Dropout			Dropout Rate		
	Regular-Ed	Special-Ed	Total Students	Regular-Ed	Special-Ed	Total Students	Regular-Ed	Special-Ed	Total Students
New Castle	3,238	19,962	23,200	74	230	304	2.3%	1.2%	1.3%
Kent	1,433	7,616	9,049	46	68	114	3.2%	0.9%	1.3%
Sussex	1,315	6,723	8,038	32	97	129	2.4%	1.4%	1.6%
<b>Total</b>	<b>5,986</b>	<b>34,301</b>	<b>40,287</b>	<b>152</b>	<b>395</b>	<b>547</b>	<b>2.5%</b>	<b>1.2%</b>	<b>1.4%</b>

**Figure 12**  
**Students with Disabilities Dropouts by County, 2015-2016**



## *Appendix A*

### Criteria for being identified as a dropout:

- A student who completed the **previous** school year and who did **not** reach his or her 16th birthday by the beginning of the **current** school and did not attend any days of the **current** school year is considered "dropout underage" from the receiving school. This student should be coded in eSchoolPLUS as **Dropout-Underage**. This underage dropout should have a withdrawal date that is the same as the entry date (i.e., first day of school of the reporting year).
- A student who completed the **previous** school year and who did reach his or her 16th birthday by the beginning of the **current** school and did not attend any days of the **current** school year is considered "dropout-truancy" from the receiving school. This student should be coded in eSchoolPLUS as **Dropout-Truancy**. This dropout should have a withdrawal date that is the same as the entry date (i.e., first day of school of the reporting year).
- If a student has moved and there is no official documentation that he or she has transferred to another school, he or she is counted as a dropout and code in eSchoolPLUS as **Dropout-Underage or Dropout-Truancy** depending on age.
- A student who transfers to James H. Groves Adult High School during the current school year and is not in attendance (enrolled) by **September 30** of the next school year, is counted as **Dropout-Academic** from the home school.
- A student who transfers to James H. Groves Adult Basic Education (ABE) programs during the current school year is counted as **Dropout-Academic** from the home school.
- An expelled student is counted as a dropout if he or she does not return at the end of the disciplinary period. This student should be coded in eSchoolPLUS as **Dropout-Behavior**.
- A school leaver who has joined the military is counted as a dropout. This student should be coded in eSchoolPLUS as **Dropout-Military**.
- A school leaver who has joined Job Corps is counted as a dropout. This student should be coded in eSchoolPLUS as **Dropout-Employment**.
- A student withdrawn because of truancy is counted as a dropout. This student shall be coded in eSchoolPLUS as **Dropout-Underage or Dropout-Truancy** depending on age. (A student with an active truancy case with the Justice of the Peace Court shall not be withdrawn from eSchoolPLUS.)

### Criteria for not being identified as a dropout:

- A student who remains enrolled in a public school in the State.
- A student who receives a diploma or in the case of a special education student a district or charter school issued "Certificate" should not be reported as a dropout.
- A student who transfers to another public or private school should not be reported as a dropout. Documentation of transfer needs to be preserved.
- A student who moves out of state should not be reported as a dropout. Documentation of the move needs to be preserved.
- A student who dies should not be reported as a dropout.
- A school leaver who is in a correctional institution or other state agency placement should not be counted as a dropout.
- A student who leaves the United States is not considered to be a dropout even if the school district cannot document the student's subsequent enrollment in school.