

2021 ALL-STATE **MIDDLE SCHOOL** AUDITION REQUIREMENTS

1. All-State Middle School Band membership rules and regulations:

- a) The student must be in the seventh or eighth grade.
- b) The decision of the selection committee is final.
- c) Only instruments listed on the All-State Application or in the 2021 All-State Middle School Band Requirements printed in the handbook may audition. For clarification regarding any other instrument, contact the Junior High-Middle School Representative.
- d) String Bass students should audition through the Florida Orchestra Association and must be a member of the band or orchestra program at their school.
- e) The student must be a member of the band program at their school and have their name submitted on the proper All-State Application form. The Application form must be typed and signed by the band director and principal. The Application form must be submitted by the proper deadline date as set by the District.
- f) The band director must be a member of FBA/FMEA by September 1, 2020.
- g) Students selected for any of the All-State groups must bring their own music stand, instrument, band uniform, etc.

When the student enters the room, he/she will be asked to perform:

- a) **The specific prepared exercises** for their instrument(s) as listed in the All-State Middle School Audition Requirements. Please note the suggested tempi that have been given.
- b) **A chromatic scale** covering the range for their instrument (as given in the All-State Middle School Audition Requirements.) The scale will be performed in even eighth notes at a minimum tempo of MM *quarter note* = 144. The scale will be tongued ascending and slurred descending where applicable. Scale is to be memorized.
- c) **Seven major scales**, (in 2 minutes or less) from memory, complete with arpeggios, at a minimum tempo of MM *quarter note* = 120. Scales are to be performed a minimum of 2 octaves where possible. Students who wish to play a 3rd octave may do so. All scales must be performed within the allotted time frame. Scales must be performed in complete octaves. The scale pattern is ♮ ♮ ♮ ♮ ♮ ♮ ♮ ♮. The arpeggio pattern is ♮ ♮ ♮ ♮. The scales are to be tongued ascending and slurred descending where applicable. The student will be asked to perform scales in their transposed form. Scales will be performed in the following order, starting with the concert key of: G, C, F, Bb, Eb, Ab, & Db.
- d) **A short sight-reading exercise(s)** to demonstrate the student's reading ability. The student will have thirty seconds to study the piece before playing it. (**Percussionists** will be required to sight-read on snare and mallets.)

All exercises are from the Rubank Advanced Method, Volume I, except Percussion

Play the entire exercise unless specific measures are indicated.

<p>Piccolo; (use flute book) Chromatic: 2 octaves from Eb Exercise: pg. 51 #14; dotted quarter note = 60</p> <p><i>All Piccolo students MUST also audition on Flute. Their Flute audition will determine membership in the band and the Piccolo double will be determined by the Piccolo audition. The Piccolo audition will contain the chromatic scale and the above exercise – no other scales and no sight-reading.</i></p>	<p>Trumpet; Chromatic: 2 octaves from G Lyrical Exercise: pg. 28, #13; top line, m. 1-15 + 1 note, quarter note = 94 Technical Exercise: pg. 51, #16; m. 1-16, quarter note = 130</p> <p>Horn in F; Chromatic: 2 octaves from F Lyrical Exercise: pg. 31, #15; top line, no repeats, quarter note = 76 Technical Exercise: pg. 29, #12; top line, quarter note = 112</p>
<p>Flute; Chromatic: 3 octaves from C Lyrical Exercise: pg. 54, #25; dotted quarter note = 46 Technical Exercise: pg. 38, #18; top line, m. 1-15 + the Fine measure, quarter note = 112</p>	<p>Trombone, Euphonium BC; Chromatic: 2 octaves From F Lyrical Exercise: pg. 35, #19; top line, m. 1-23 plus 1 note, eighth note = 96 Technical Exercise: pg. 51, #7; no repeats, no DC, dotted quarter note = 100</p>
<p>Oboe; Chromatic: 2 octaves from C Lyrical Exercise: pg. 34, #17; top line, no repeats, quarter note = 80 Technical Exercise: pg. 49 #15; quarter note = 88</p>	<p>Euphonium TC; (use trumpet book) Chromatic: 2 octaves from G Lyrical Exercise: pg. 35, #19; top line, m. 1-23 plus 1 note, eighth note = 96 Technical Exercise: pg. 47, #7; no repeats, no DC, dotted quarter note = 100</p>
<p>Bassoon; Chromatic: 2 octaves from F Lyrical Exercise: pg. 22, #5; top line, m.1-21 + 1 note, quarter note = 76 Technical Exercise: pg. 34, 'Var. 1'; top line, m. 1-16, no repeats, quarter note = 128</p>	<p>Tuba; Chromatic: 2 octaves from F Lyrical Exercise: pg. 29, #6; m. 1-25 + 1 note, quarter note = 84 Technical Exercise: pg. 48, #10; no repeats, quarter note = 94</p>
<p>Bb Clarinet; Chromatic: 3 octaves from E Lyrical Exercise: pg. 42, #19; top line, m. 1-22, quarter note = 60 Technical Exercise: pg. 34, #13; top line, beginning - m. 20 + 1 note, quarter note = 108</p>	<p>Percussion; Percussionists must audition <u>in all three areas.</u> Mallets; Chromatic: 2 octaves from Bb Exercise: pg. 57/58, Sonatina; m. 1-19 + 1 note, quarter note = 116 <i>Masterworks for Mallets, trans. by Beth Gottlieb</i> <i>Publisher: Row-Loff</i></p>
<p>Bass Clarinet; (use clarinet book) Chromatic: 2 octaves from E Lyrical Exercise: pg. 24, #6; bottom line, no repeats, eighth note = 90 Technical Exercise: pg. 50, # 4; quarter note = 128</p>	<p>Snare; Exercise: pg. 28, Etude 16; m. 17- end, quarter note = 108 <i>Intermediate Snare Drum Studies by Mitchell Peters</i> <i>Publisher: Mitchell Peters</i></p>
<p>Eb Contra Alto & Bb Contra Bass Clarinet; (use clarinet book) Chromatic: 2 octaves from E Lyrical Exercise: pg. 25, #7; bottom line, no repeats, quarter note = 88 Technical Exercise: pg. 51, #8; dotted quarter note = 112</p>	<p>Timpani; Exercise: pg. 11, Etude 4; quarter note = 128 <i>Pedal to the Kettle by Kirk J. Gay</i> <i>Tapspace Publications</i></p>
<p>Alto, Tenor, and Bari Saxophone; Chromatic: 2 octaves from C Lyrical Exercise: pg. 22, #4; top line, m.1-19 + 2 notes, quarter note = 84, no repeats Technical Exercise: pg. 48, #14; quarter note = 156</p>	

Middle School All-State Scales for Xylophone

$\text{♩} = 120$

G

C

F

Bb

Eb

Ab

Db

$\text{♩} = 144$
Chromatic

The image displays a musical score for xylophone scales. It consists of eight staves. The first seven staves are for major scales in the keys of G, C, F, Bb, Eb, Ab, and Db, each with a tempo of 120. The eighth staff is for a chromatic scale with a tempo of 144. The final line shows a short descending scale in Bb.

2020-2021 All-State Mallets: Quarter Note = 116
(see page 2 for ending)

♩ = 116 **Allegro con spirito**

Friedrich Kuhlau
arranged by Beth Gottlieb

dolce

mp *mf*

4 *mf* 5 6

7 8 *p*

A 9 *f* 10 *p*

11 *f* 12 *p*

13 14

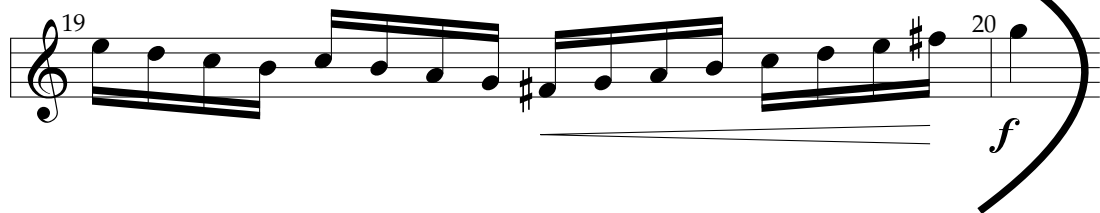
15 16 *f*

B 17 18

Measure 1: Treble clef, common time. Starts with a quarter rest, followed by a quarter note G4, a quarter note A4, and a quarter note B4. Dynamics: *mp*.
Measure 2: Treble clef, common time. Starts with a quarter note G4, a quarter note A4, and a quarter note B4. Dynamics: *mp*.
Measure 3: Treble clef, common time. Starts with a quarter note G4, a quarter note A4, and a quarter note B4. Dynamics: *mp*.
Measure 4: Treble clef, common time. Starts with a quarter note G4, a quarter note A4, and a quarter note B4. Dynamics: *mf*.
Measure 5: Treble clef, common time. Starts with a quarter note G4, a quarter note A4, and a quarter note B4. Dynamics: *mf*.
Measure 6: Treble clef, common time. Starts with a quarter note G4, a quarter note A4, and a quarter note B4. Dynamics: *mf*.
Measure 7: Treble clef, common time. Starts with a quarter note G4, a quarter note A4, and a quarter note B4. Dynamics: *mf*.
Measure 8: Treble clef, common time. Starts with a quarter note G4, a quarter note A4, and a quarter note B4. Dynamics: *p*.
Measure 9: Treble clef, common time. Starts with a quarter note G4, a quarter note A4, and a quarter note B4. Dynamics: *f*.
Measure 10: Treble clef, common time. Starts with a quarter note G4, a quarter note A4, and a quarter note B4. Dynamics: *p*.
Measure 11: Treble clef, common time. Starts with a quarter note G4, a quarter note A4, and a quarter note B4. Dynamics: *f*.
Measure 12: Treble clef, common time. Starts with a quarter note G4, a quarter note A4, and a quarter note B4. Dynamics: *p*.
Measure 13: Treble clef, common time. Starts with a quarter note G4, a quarter note A4, and a quarter note B4. Dynamics: *f*.
Measure 14: Treble clef, common time. Starts with a quarter note G4, a quarter note A4, and a quarter note B4. Dynamics: *f*.
Measure 15: Treble clef, common time. Starts with a quarter note G4, a quarter note A4, and a quarter note B4. Dynamics: *f*.
Measure 16: Treble clef, common time. Starts with a quarter note G4, a quarter note A4, and a quarter note B4. Dynamics: *f*.
Measure 17: Treble clef, common time. Starts with a quarter note G4, a quarter note A4, and a quarter note B4. Dynamics: *f*.
Measure 18: Treble clef, common time. Starts with a quarter note G4, a quarter note A4, and a quarter note B4. Dynamics: *f*.

Continued on next page!

pg. 2



2020-2021 All-State Snare Drum: Quarter Note = 108

Handwritten musical score for snare drum, consisting of five staves. The notation includes various rhythmic patterns, dynamics, and performance instructions.

Staff 1: Starts with a **ff** (fortissimo) dynamic. Features a series of eighth notes with accents (>) and a fermata. Dynamics include **pp** (pianissimo), **ff**, **pp**, **ff**, and **p** (piano). Includes a **Λ** (crescendo) marking.

Staff 2: Continues the rhythmic patterns. Includes a **mf** (mezzo-forte) dynamic and a **Λ** marking.

Staff 3: Features a **p** dynamic and a **f** (forte) dynamic with a **Λ** marking.

Staff 4: Continues the rhythmic patterns with various articulations.

Staff 5: Starts with a **pp** dynamic and the instruction **cresc. poco a poco** (crescendo poco a poco). Includes a **f** dynamic and a **Λ** marking.

2020-2021 All-State Timpani: Quarter Note = 128

B \flat -E \flat $\text{♩} = 128$
p

5
f

9
mf

13

16
f

21

25
p