



Delaware Summary of 2016-2017 Graduation and Dropout Data

Presentation to the State Board of Education
March 15, 2018

GRADUATION DATA 2013–2017



Four-Year Adjusted Cohort Graduation Rate Calculation, Class of 2017

- *Numerator* – Number of 2017 cohort members who earned a regular high school diploma through the summer of 2017
- *Denominator* – Number of first-time 9th graders in the fall of 2013 (starting cohort) plus students who transferred in, minus students who transferred out, emigrated, or deceased during school years 2013–2014, 2014–2015, 2015–2016 and 2016–2017

Number of 2017 cohort members earning diploma through summer 2017
2013 1st time 9th graders + incoming students – exiting students within the
4-year cohort

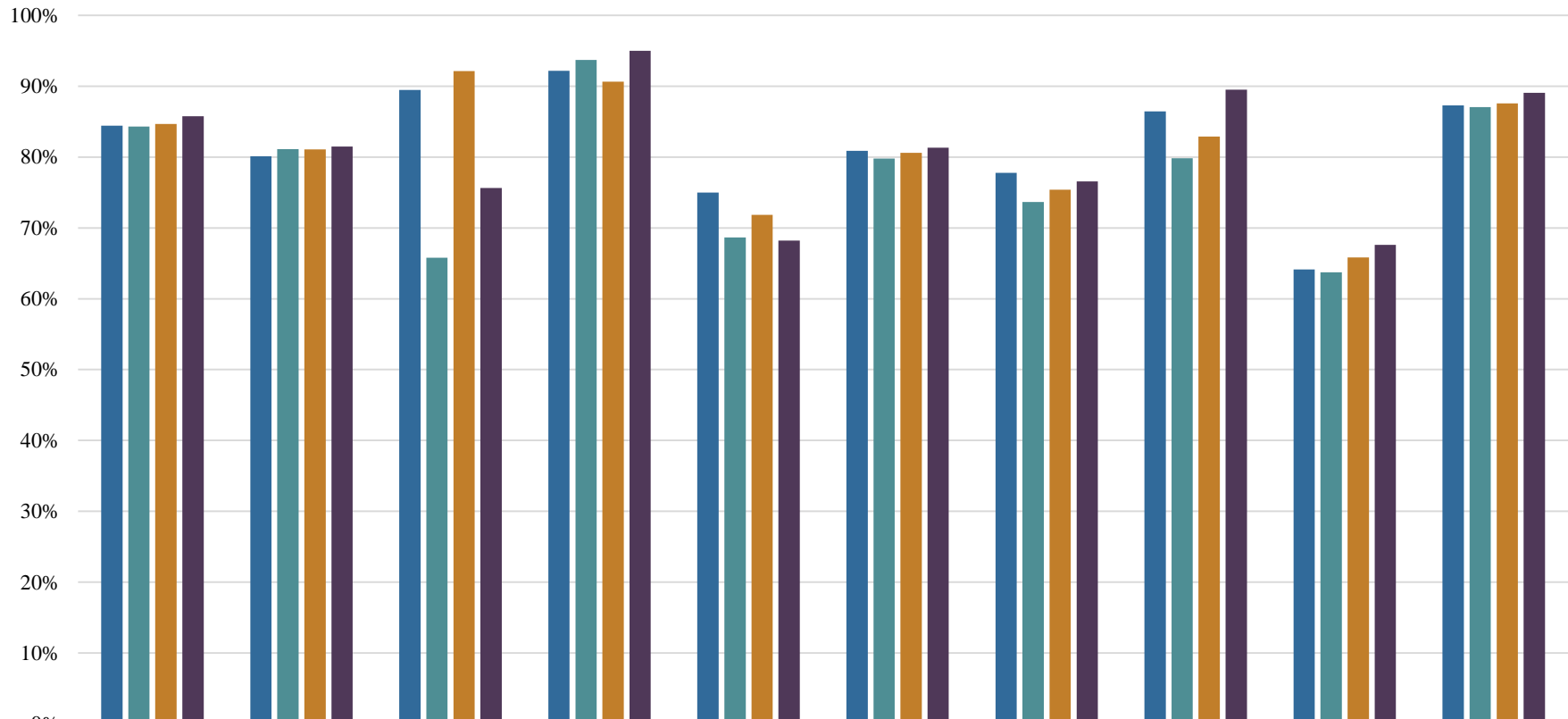
Graduation Summary Statewide Data

- For the 2016-2017 school year:
 - 8,749 of the 10,203 students in the cohort graduated at the end of the school year with a regular high school diploma
 - Annual graduation rate for 2016-2017 is 85.75%
 - Slight increase from the previous year's rate of 84.66%

Class of 2017 Graduation Rates by Subgroup

Student Group	Students in Cohort	Graduates	Graduation Rate
All Students	10,203	8,749	85.8%
African American	3,198	2,606	81.5%
American Indian	41	31	75.6%
Asian	343	328	>95.0%
English Learner	500	341	68.2%
Hispanic	1,444	1,174	81.3%
Low Income	2,826	2,163	76.5%
Multiracial	210	188	89.5%
Students with Disabilities	1,473	996	67.6%
White	4,954	4,412	89.1%

Four-Year Adjusted Graduation Rate Trend by Subgroup, 2014–2017



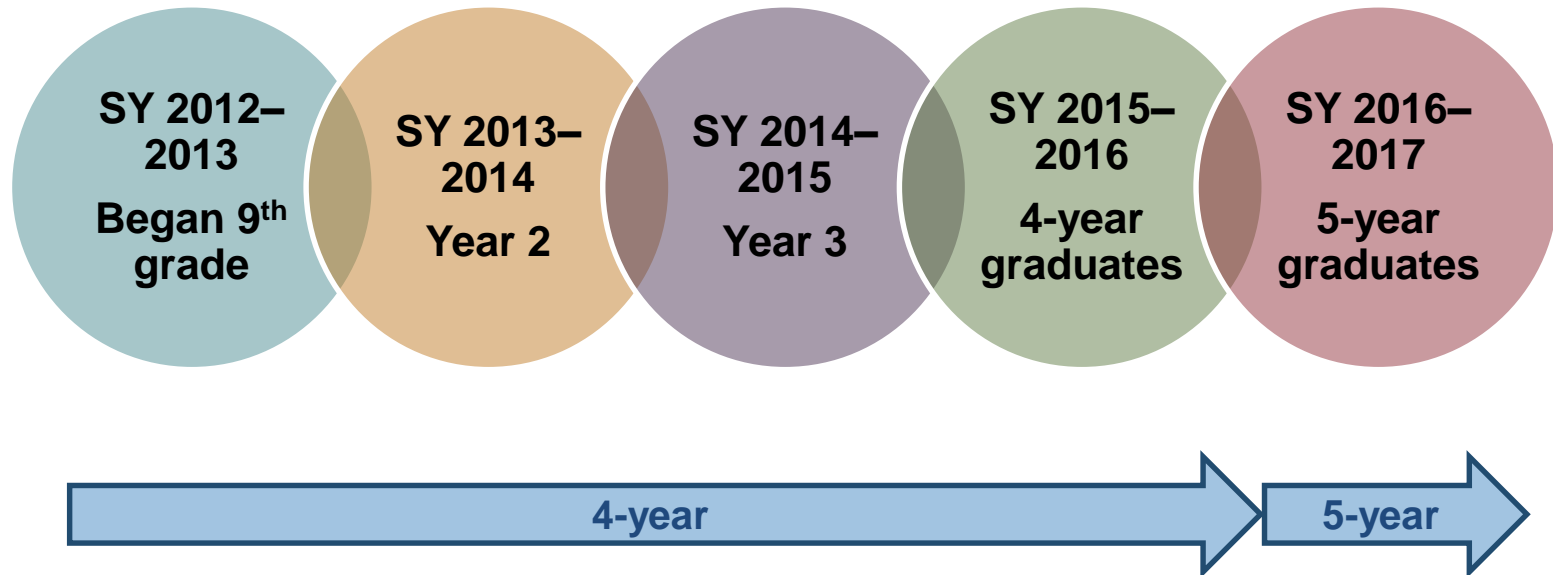
	All Students	African American	American Indian	Asian	English Learner	Hispanic	Low-Income	Multiracial	Students with Disabilities	White
■ 2014	84.4%	80.1%	89.5%	92.2%	75.0%	80.9%	77.8%	86.4%	64.1%	87.3%
■ 2015	84.3%	81.1%	65.8%	93.7%	68.7%	79.8%	73.7%	79.8%	63.7%	87.0%
■ 2016	84.7%	81.1%	92.1%	90.6%	71.8%	80.6%	75.4%	82.9%	65.8%	87.6%
■ 2017	85.8%	81.5%	75.6%	95.0%	68.2%	81.3%	76.5%	89.5%	67.6%	89.1%

Five-Year Adjusted Cohort Graduation Rate Calculation, Class of 2016

- *Numerator* – Number of 2016 cohort members who earned a regular high school diploma through the summer of 2017
- *Denominator* – Number of first-time 9th graders in the fall of 2012 (starting cohort) plus students who transferred in, minus students who transferred out, emigrated, or deceased during school years 2012-2013, 2013-2014, 2014-2015 and 2015-2016

Number of 2016 cohort members earning diploma through summer 2017
2012 1st time 9th graders + incoming students – exiting students within the
5-year cohort

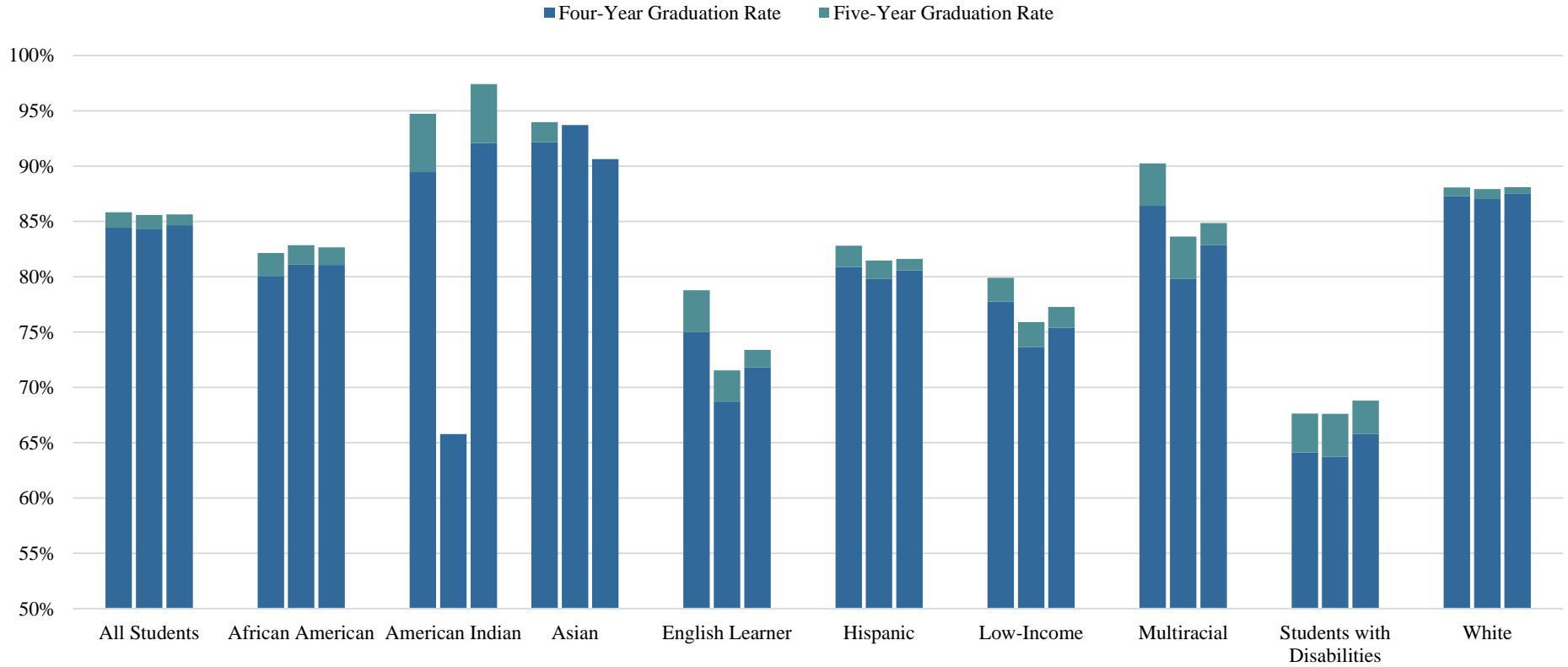
Looking at a Five-Year Adjusted Cohort Graduation Rate Class of 2016



Five-Year Adjusted Cohort Graduation Rate, Class of 2016

Student Group	Four-Year Graduates	Five-Year Graduates	Net Change in Graduates	Four-Year Graduation Rate	Five-Year Graduation Rate	Net Change in Graduation Rate
All Students	8,353	8,460	107	84.7%	85.6%	1.0%
African American	2,608	2,666	58	81.1%	82.7%	1.6%
American Indian	35	37	2	92.1%	97.4%	5.3%
Asian	310	310	0	90.6%	90.6%	0.0%
English Learner	278	284	6	71.8%	73.4%	1.6%
Hispanic	972	985	13	80.6%	81.6%	1.0%
Low Income	2,282	2,343	61	75.4%	77.3%	1.9%
Multiracial	126	129	3	82.9%	84.9%	2.0%
Students with Disabilities	924	968	44	65.8%	68.8%	3.0%
White	4,291	4,322	31	87.6%	88.1%	0.6%

Five-Year Adjusted Graduation Rate Trend by Subgroup, 2014–2016



	All Students			African American			American Indian			Asian			English Learner			Hispanic			Low-Income			Multiracial			Students with Disabilities			White		
	2014	2015	2016	2014	2015	2016	2014	2015	2016	2014	2015	2016	2014	2015	2016	2014	2015	2016	2014	2015	2016	2014	2015	2016	2014	2015	2016			
Four-Year Graduation	84.4%	84.4%	84.7%	80.1%	81.1%	81.1%	89.5%	65.8%	92.1%	92.2%	93.7%	90.6%	75.0%	68.7%	71.8%	80.9%	79.8%	80.6%	77.8%	73.7%	75.4%	86.4%	79.8%	82.9%	64.1%	63.7%	65.8%	87.3%	87.0%	87.6%
Five-Year Graduation	85.8%	85.6%	85.6%	82.2%	82.9%	82.7%	94.7%	65.8%	97.4%	94.0%	93.7%	90.6%	78.8%	71.5%	73.4%	82.8%	81.5%	81.6%	79.9%	75.9%	77.3%	90.2%	83.6%	84.9%	67.6%	67.6%	68.8%	88.1%	87.9%	88.1%

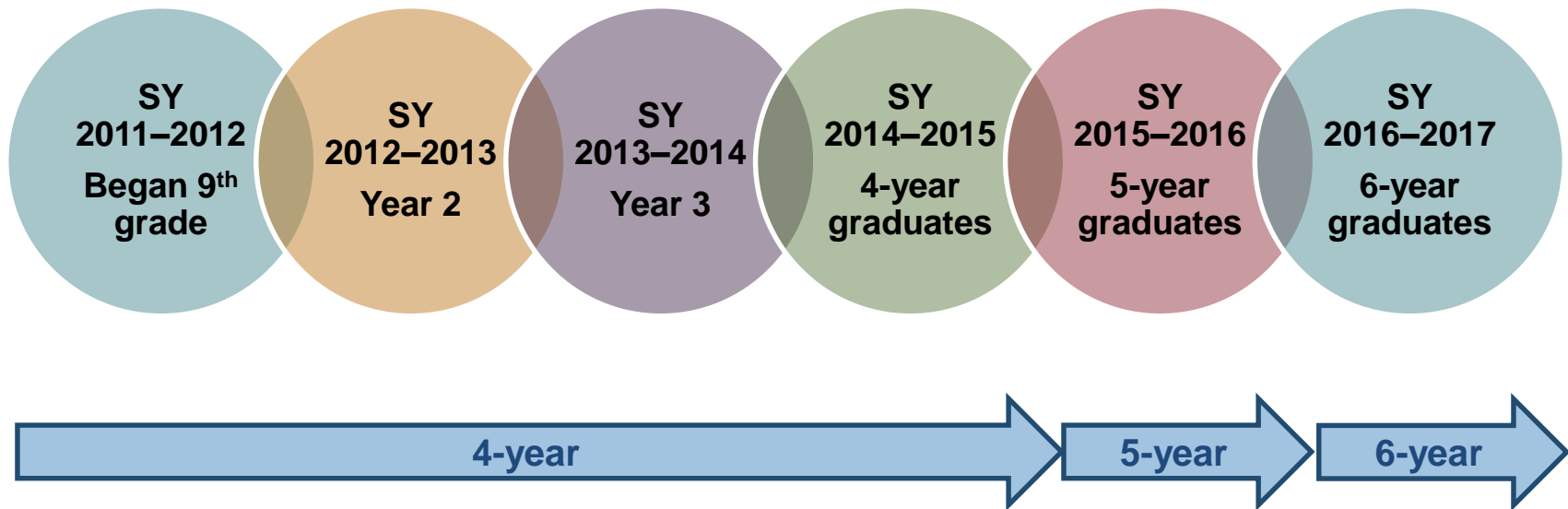
Six-Year Adjusted Cohort Graduation Rate Calculation, Class of 2015

- *Numerator* – Number of 2015 cohort members who earned a regular high school diploma through the summer of 2017
- *Denominator* – Number of first-time 9th graders in the fall of 2011 (starting cohort) plus students who transferred in, minus students who transferred out, emigrated, or deceased during school years 2011–2012, 2012–2013, 2013–2014 and 2014–2015

Number of 2015 cohort members earning diploma through summer 2017

2011 1st time 9th graders + incoming students – exiting students within the
6-year cohort

Looking at a Six-Year Adjusted Cohort Graduation Rate Class of 2015

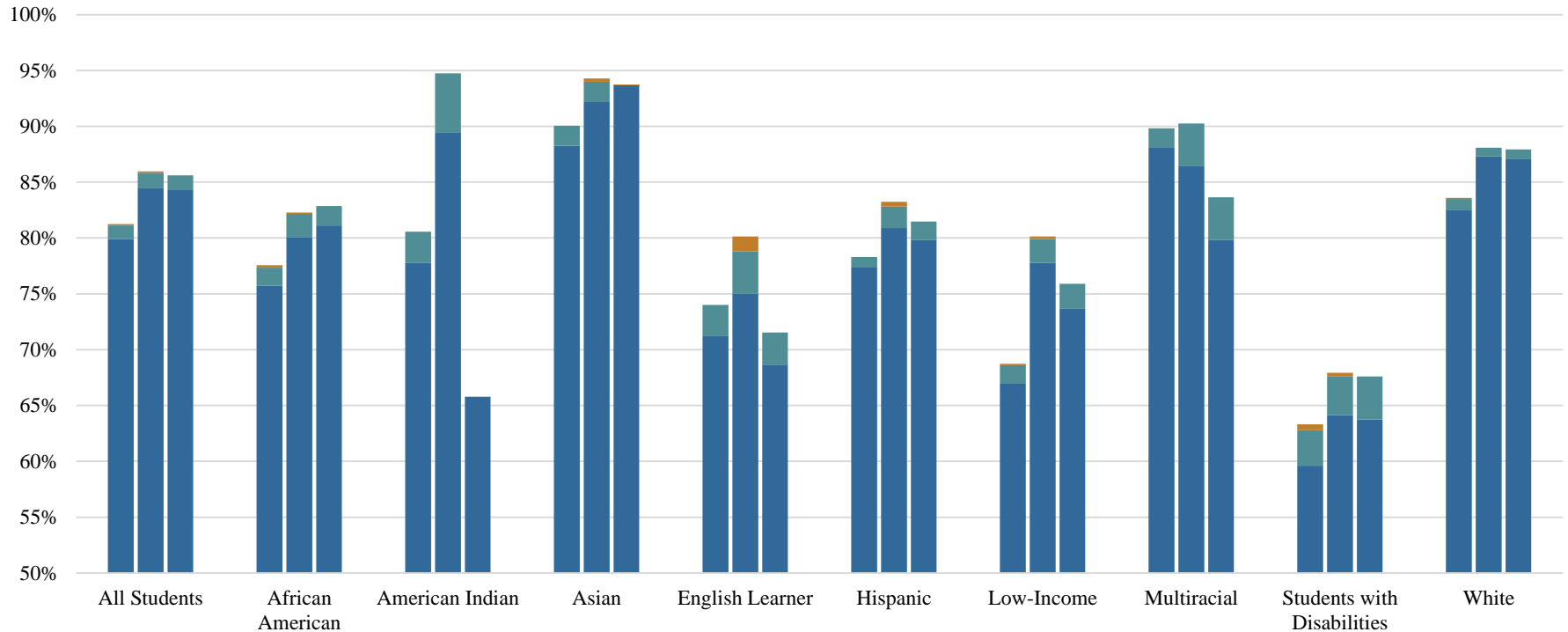


Six-Year Adjusted Cohort Graduation Rate, Class of 2015

Student Group	Four-Year Graduates	Five-Year Graduates	Six-Year Graduates	Net Change in Graduates Year 4 to Year 5	Net Change in Graduates Year 5 to Year 6	Four-Year Graduation Rate	Five-Year Graduation Rate	Six-Year Graduation Rate
All Students	8,293	8,433	8,448	140	15	84.4%	85.6%	85.7%
African American	2,628	2,691	2,697	63	6	81.1%	82.9%	83.0%
American Indian	25	25	25	0	0	65.8%	65.8%	65.8%
Asian	328	329	330	1	1	93.7%	93.7%	94.0%
English Learner	252	264	269	12	5	68.7%	71.5%	72.9%
Hispanic	889	910	915	21	5	79.8%	81.5%	81.9%
Low Income	2,055	2,124	2,132	69	8	73.7%	75.9%	76.1%
Multiracial	87	92	92	5	-	79.8%	83.6%	83.6%
Students with Disabilities	872	931	936	59	5	63.7%	67.6%	67.9%

Six-Year Adjusted Graduation Rate Trend by Subgroup, 2013–2015

■ Four-Year Graduation Rate ■ Five-Year Graduation Rate ■ Six-Year Graduation Rate



	All Students			African American			American Indian			Asian			English Learner			Hispanic			Low-Income			Multiracial			Students with Disabilities			White		
	2013	2014	2015	2013	2014	2015	2013	2014	2015	2013	2014	2015	2013	2014	2015	2013	2014	2015	2013	2014	2015	2013	2014	2015	2013	2014	2015	2013	2014	2015
Four-Year Graduation	79.9%	84.4%	84.4%	75.7%	80.1%	81.1%	77.8%	89.5%	65.8%	88.3%	92.2%	93.7%	71.3%	75.0%	68.7%	77.4%	80.9%	79.8%	66.9%	77.8%	73.7%	88.1%	86.4%	79.8%	59.6%	64.1%	63.7%	82.5%	87.3%	87.0%
Five-Year Graduation	81.1%	85.8%	85.6%	77.3%	82.2%	82.9%	80.6%	94.7%	65.8%	90.1%	94.0%	93.7%	74.0%	78.8%	71.5%	78.3%	82.8%	81.5%	68.6%	79.9%	75.9%	89.8%	90.2%	83.6%	62.8%	67.6%	67.6%	83.5%	88.1%	87.9%
Six-Year Graduation	81.4%	86.0%	85.7%	77.6%	82.4%	83.0%	80.6%	94.7%	65.8%	90.1%	94.0%	94.0%	74.9%	78.8%	72.9%	78.8%	82.8%	81.9%	69.1%	80.0%	76.1%	91.5%	90.2%	83.6%	63.8%	68.2%	67.9%	83.7%	88.2%	88.0%

DROPOUT DATA 2013–2017

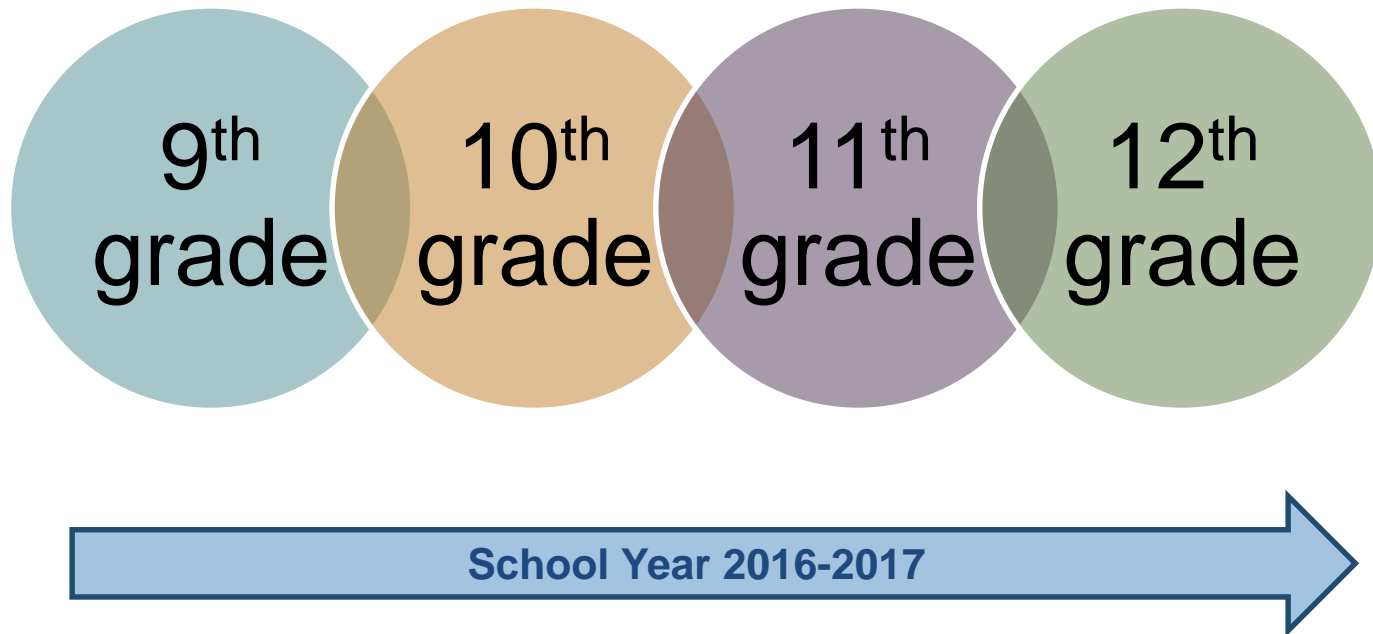


Dropout Definition and Calculation

- Dropout rate:
 - Dropout rate is calculated for grades 9–12 as prescribed by the National Center for Educational Statistics (NCES)
 - Dropout rate is total number of students (grades 9–12) who dropped out in a single year, divided by the total enrollment of the same school year—this is reported as the event (annual) dropout rate

$$\frac{\text{Number of dropout students in grades 9–12}}{\text{Total enrollment of the same school year}}$$

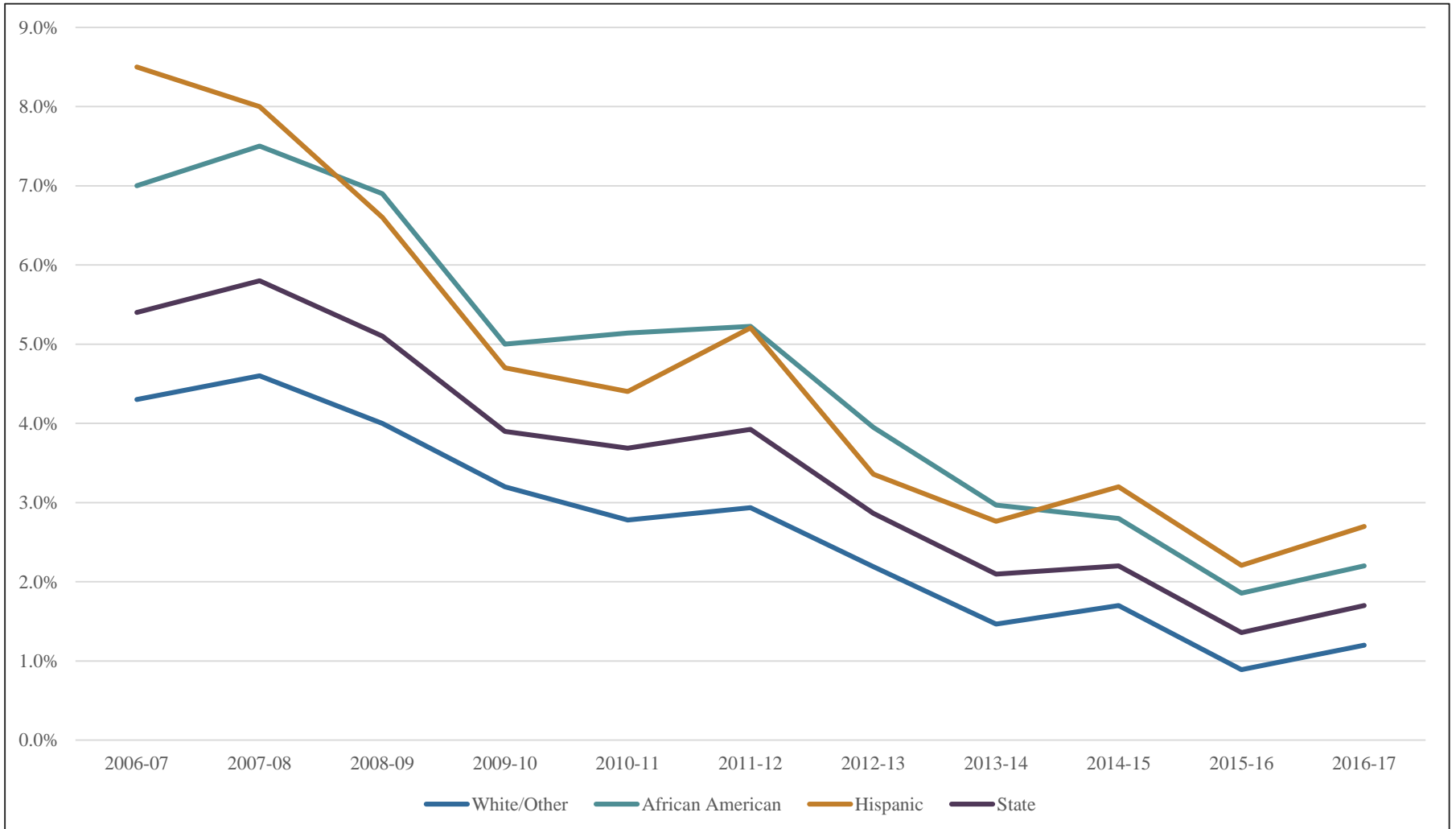
Looking at Dropout Rate by School Year 2016–2017



Dropout Summary Statewide Data

- For the 2016–2017 school year, grades 9–12:
 - 700 of the 40,884 students enrolled dropped out of school during the school year
 - Annual dropout rate for 2016-2017 is 1.7%
 - Slight increase from the previous year's rate of 1.4%

Dropout Rate by Race/Ethnicity, 2007–2017



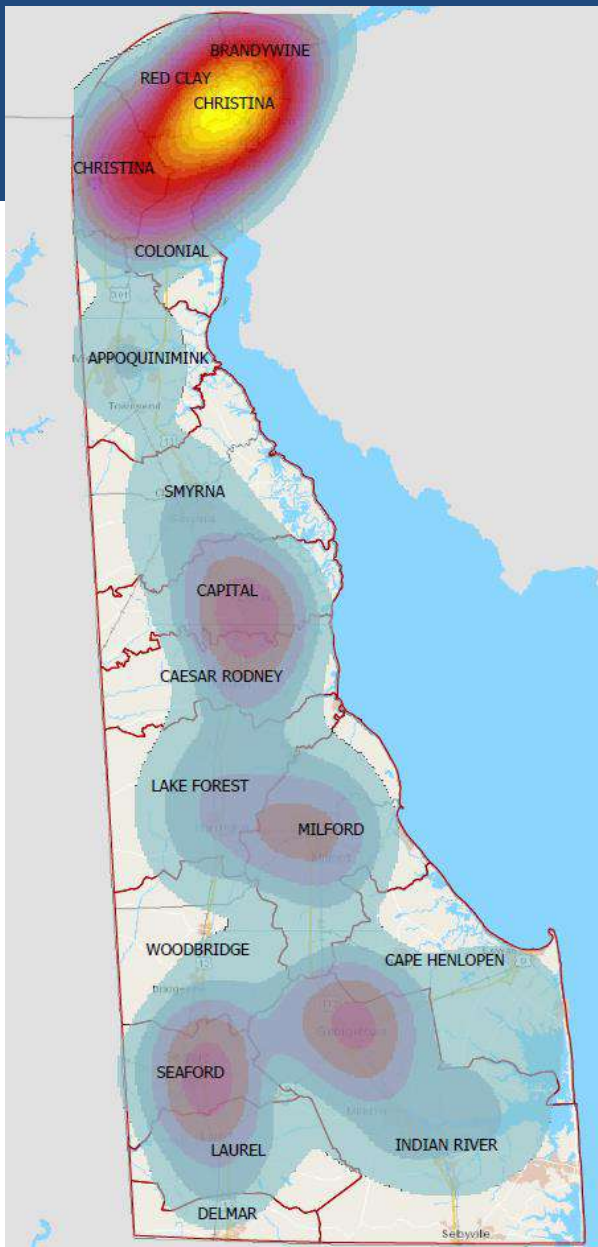
Dropouts, Rates, and Enrollment by Gender and Race/Ethnicity, 2016–2017

**Delaware Dropouts, Dropout Rates and Student Enrollments
Gender by Race (Grades 9–12)**

	Number of Enrolled Students				Number of Dropouts/Rate			
Gender	African American	Hispanic	White/ Other	All	African American	Hispanic	White/ Other	All
Male	6,538	3,005	11,384	20,977	169 (2.6%)	85 (2.8%)	164 (1.4%)	418 (2.0%)
Female	6,371	2,913	10,623	19,907	112 (1.8%)	76 (2.6%)	94 (0.9%)	282 (1.4%)
Total	12,909	5,968	22,007	40,884	281 (2.2%)	161 (2.7%)	258 (1.2%)	700 (1.7%)

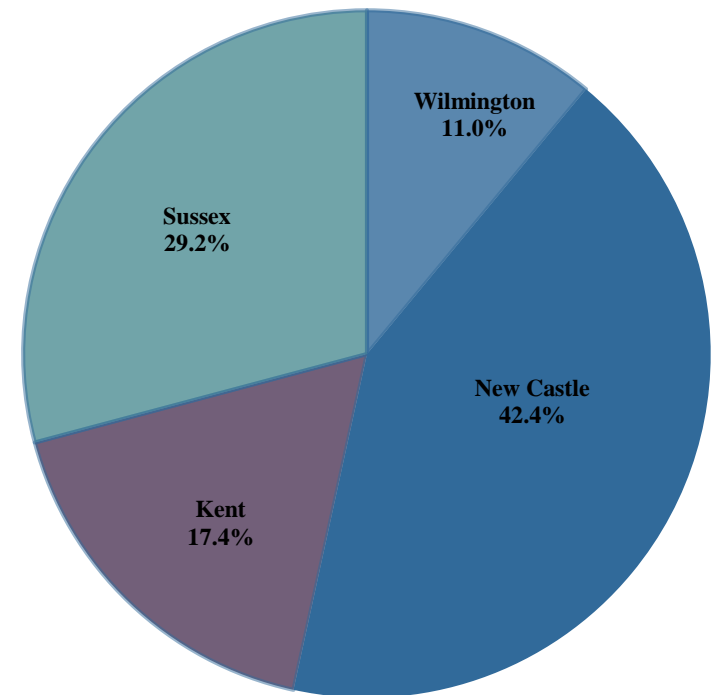
Dropout Map

- Dropout Map includes dropouts by geographic area of residence, 2016-2017



Dropouts by County

Dropouts by County, including Wilmington 2016-2017		
County/ City	Dropouts	Percentage of Dropouts
Wilmington	77	11.0%
New Castle	297	42.4%
Kent	122	17.4%
Sussex	204	29.2%
Total	700	100.0%



Note: Wilmington dropouts are defined by students who reside in zip codes 19801 and 19802

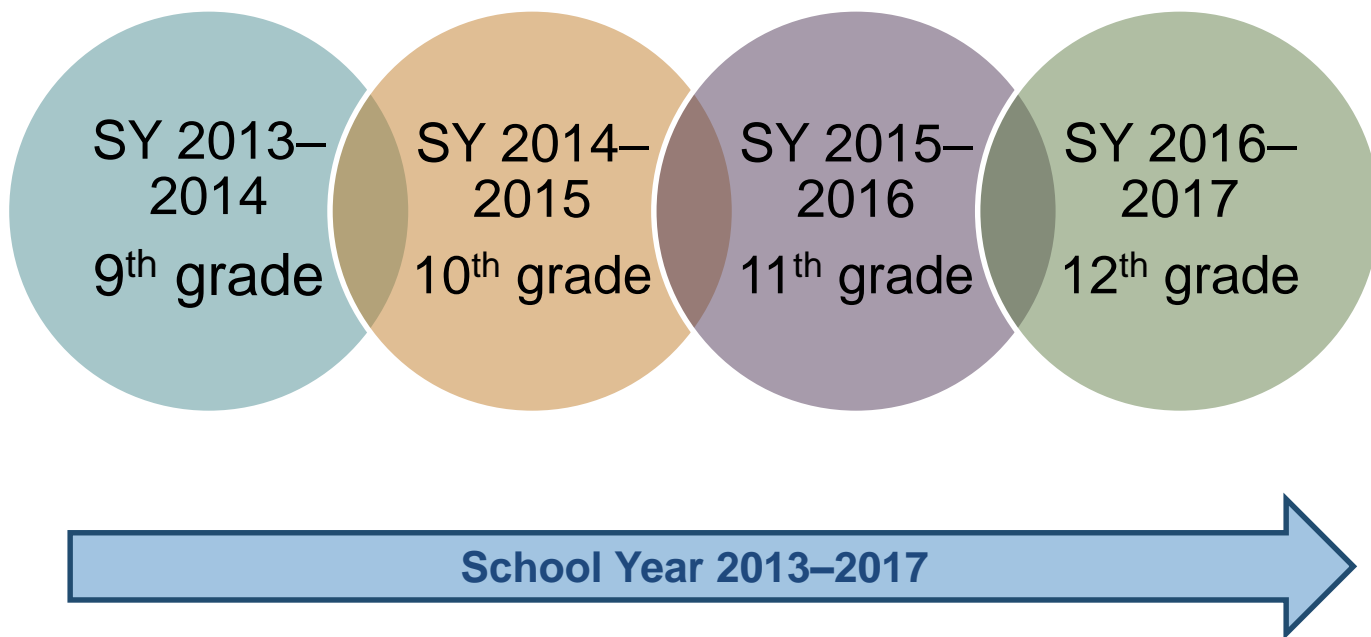
Four-Year Adjusted Cohort Dropout Definition and Calculation

- Cohort Dropout rate:
 - Dropout rate is total number of students (grades 9–12) who dropout within the 4-year cohort period divided by the number of students who form the adjusted cohort.

Number of cohort dropout students in grades 9–12

Total enrollment of the adjusted cohort

Looking at Cohort Dropout Rate by School Year 2013–2017



Four-Year Adjusted Cohort Dropout Rates by Cohort Class

Cohort Class	# of Students that dropped out in Year 1 (Grade 9)	# of Students that dropped out in Year 2 (Grade 10)	# of Students that dropped out in Year 3 (Grade 11)	# of Students that dropped out in Year 4 (Grade 12)	Total # of Dropouts over the 4 years	Four-Year Adjusted Cohort Dropout Rate
Class of 2013 Began 9th grade in Fall 2009	281 (37.6%)	109 (14.6%)	213 (28.5%)	144 (19.3%)	747	7.3%
Class of 2014 Began 9th grade in Fall 2010	60 (12.4%)	179 (36.9%)	134 (27.6%)	112 (23.1%)	485	5.0%
Class of 2015 Began 9th grade in Fall 2011	88 (20.4%)	101 (23.4%)	115 (26.7%)	127 (29.5%)	431	4.4%
Class of 2016 Began 9th grade in Fall 2012	39 (10.4%)	115 (30.6%)	146 (38.8%)	76 (20.2%)	376	3.81%
Class of 2017 Began 9th grade in Fall 2013	3 (1.9%)	84 (54.2%)	23 (14.8%)	45 (29.0%)	155	1.53%

Note: Percentages in parentheses represent the percent of total dropouts in the cohort that dropped in the that grade.

Dropout Prevention Programs/Services

- Student services
 - Visiting teachers conduct home visits after repeated absences
 - Twilight credit recovery programs
 - Summer credit recovery programs
 - Behavior intervention initiatives
 - Student advisory programs
- Teacher professional learning
 - Improve the skill sets of teachers to support diverse populations (e.g., compassionate schools)
- Parents
 - Workshops for parents
 - Parent outreach programs (e.g., parent university)