

Verbs Have Moods Too!

- **Indicative**
- **Imperative**
- **Interrogative**
- **Subjunctive**
- **Conditional**



INDICATIVE



Definition: A statement, a fact, or an opinion.

Hint: It Indicates Something

Sentence: I *screamed* loud at the concert.

IMPERATIVE

Definition: A command

Hint: It is imperative/important that you...

Sentence: Scream your favorite song as loud as you can.



INTERROGATIVE

Definition: Asks a question

Hint: Interrogation Room

Sentence: Did you scream at the concert?

SUBJUNCTIVE

Definition: Contrary to reality; a wish or hypothetical

Hint: What if???

In the subjunctive mood, it is not certain. This situation may never happen, unlike in the conditional mood (next slide). It is just a what if!

Sentence: If I were to scream my loudest, I could severely injure my vocal cords.

Uses: if & were, would, should, could, may



Conditional

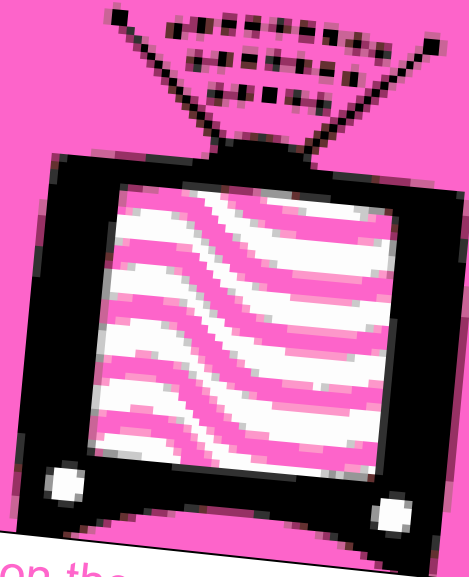
Definition: Depends on something else to happen.

Hint: If this, then that...
Under these conditions...

Sentence: If you scream the loudest, you will be on TV.

Uses: will, shall, can, might

Based on these conditions, something is certain to happen, unlike the subjunctive mood.



Let's Practice!

DIRECTIONS: Tell what type of verb mood is used in the sentence.

Where is the key to your house?

- A. Indicative
- B. Imperative
- C. Interrogative
- D. Conditional
- E. Subjunctive

C. Interrogative



Why?

Let's Practice!

DIRECTIONS: Tell what type of verb mood is used in the sentence.

If I were to win a million dollars, there are a million things I would do!

- A. Indicative
- B. Imperative
- C. Interrogative
- D. Conditional
- E. Subjunctive



E. Subjunctive

Why?

Let's Practice!

DIRECTIONS: Tell what type of verb mood is used in the sentence.

Christmas is less than a month away.

- A. Indicative
- B. Imperative
- C. Interrogative
- D. Conditional
- E. Subjunctive

A. Indicative



Why?

Let's Practice!

DIRECTIONS: Tell what type of verb mood is used in the sentence.

If you study for this quiz, you will get an "A".

- A. Indicative
- B. Imperative
- C. Interrogative
- D. Conditional
- E. Subjunctive



D. Conditional

Why?

Let's Practice!

DIRECTIONS: Tell what type of verb mood is used in the sentence.

Bring your animals inside
in the winter.

- A. Indicative
- B. Imperative
- C. Interrogative
- D. Conditional
- E. Subjunctive

B. Imperative

Why?

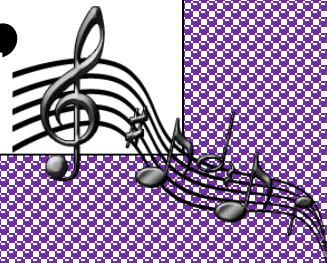
Poor Biebs, needs some help with his grammar



So... Can you help The Bieb's out??? What is wrong with his song?

In what mood is the verb in the title of his song?

“If I Was Your Boyfriend”



Subjunctive



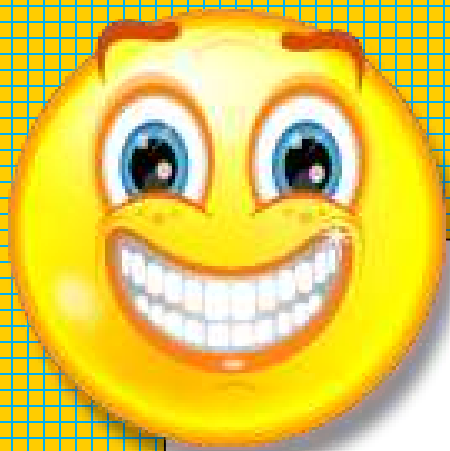
@maurizio887

Why does "was" have to be changed to "were"?

"Were" is the only appropriate form in the subjunctive mood. Normally, we would use "I was", but in a hypothetical situation/subjunctive mood, "were" is the form used.

Why can't we leave it as is, and assume it's in the conditional form?

Because it is not a certain condition; it's only a hypothetical situation he's talking about. It's not guaranteed under a certain condition.



The End!

*Be Happy! You
Know All 5 Verb
Moods!*

