

Configuration

- Attendance Notifications
 - Truancy
 - Letter 1: sent at 3 unexcused absences
 - Letter 2 : sent at 6 unexcused absences :
 - Letter 3 : sent at 10 unexcused absences
 - Excessive Excused Absence Letters
 - Letter 1: sent at 10 excused absences
 - Letter 2: sent at 14 excused absences

© 2015 School Innovations & Achievement. All rights reserved. Proprietary information not for copy or distribution.

Attention²Attendance®

877.954.4357 • www.sia-us.com

Increased Parent Communication and Engagement



Letters Printed and Mailed as of January 28, 2016

- Printed letters every two weeks (8 total letter runs to date)
- **4,024 Parent Communication pieces** (average letter run: 503)
 - 1,866 Initial Truancy Notifications
 - 493 Second Truancy Notifications
 - 44 Final Truancy Notifications (Habitual Truant)
 - 31 Excessive Excused Absence Notifications L1
 - 5 Excessive Excused Absence Notifications L2
 - 1,339 Email Notifications
 - 246 Conference Notifications



Conferences

- **81 Conferences Conducted**

© 2015 School Innovations & Achievement. All rights reserved. Proprietary information not for copy or distribution.

Attention²Attendance®

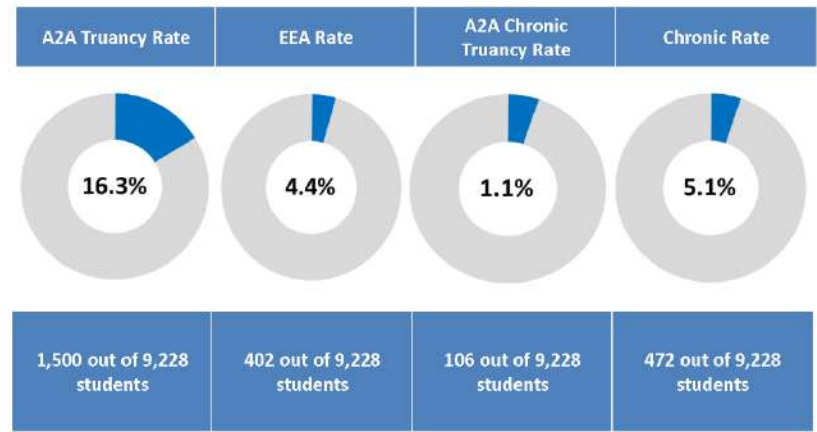
877.954.4357 • www.sia-us.com

A2A Definitions and Criteria

- **A2A Truant** – A student who has accumulated the equivalent of three or more full days of unexcused absences.
- **Excessively Excused** – A student who has accumulated the equivalent of seven or more full days of excused absences.
- **A2A Chronically Truant** – A student who is absent for 10% or more of the school year due to **unexcused** absences.
- **Chronically Absent** – A student who is absent for 10% or more of the school year due to **all** absences.

©2015 School Reporting & Achievement. All rights reserved. (This is a summary information not for copy or distribution)

2015-16 Total Absence Rates, YTD

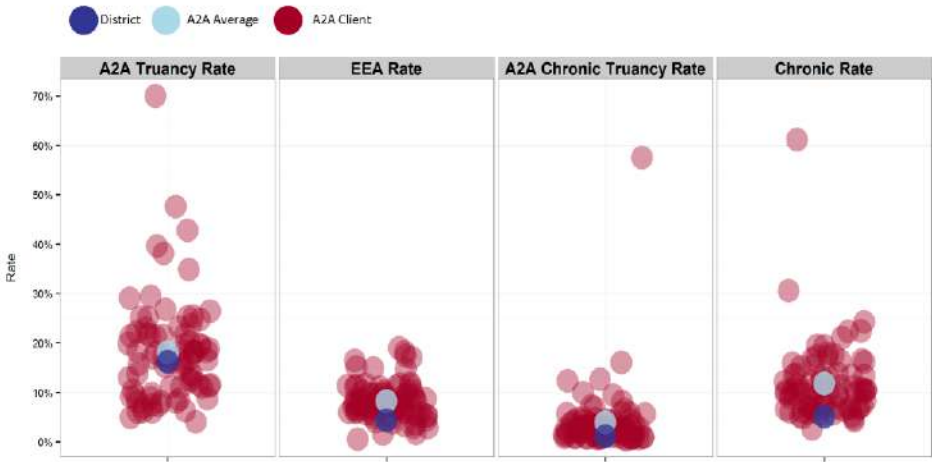


©2015 School Reporting & Achievement. All rights reserved. (This is a summary information not for copy or distribution)

Data as of 1/13/2016

2015-16 District Absence Rates Compared to Other A2A Clients, YTD

the lower, the better

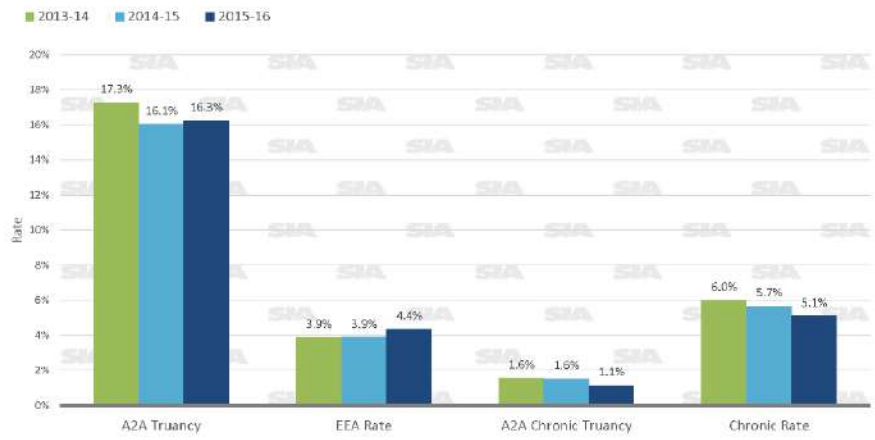


©2015 School Improvement & Achievement. All rights reserved. Proprietary information not for copy or distribution.

Data as of 1/13/16

Total Absence Rates, Year-over-Year, YTD

the lower, the better



©2015 School Improvement & Achievement. All rights reserved. Proprietary information not for copy or distribution.

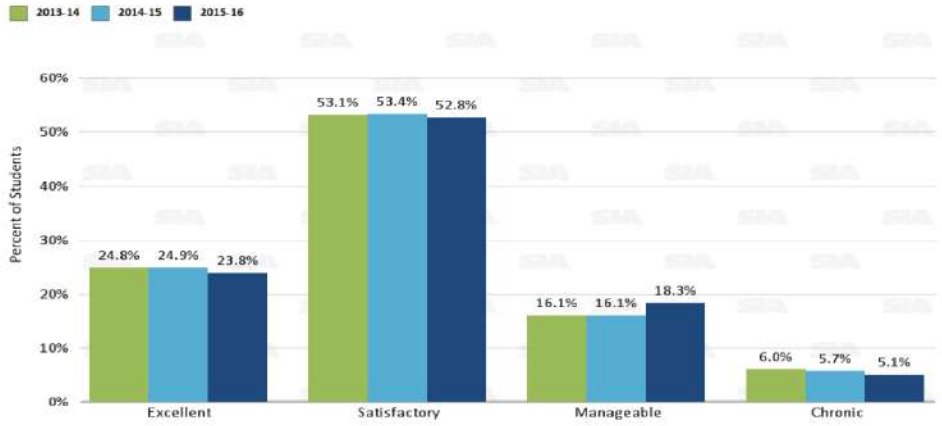
Data as of 1/13/2016

A2A Definitions and Criteria

- **A2A Truant** – A student who has accumulated the equivalent of three or more full days of unexcused absences.
- **Excessively Excused** – A student who has accumulated the equivalent of seven or more full days of excused absences.
- **A2A Chronically Truant** – A student who is absent for 10% or more of the school year due to **unexcused** absences.
- **Chronically Absent** – A student who is absent for 10% or more of the school year due to **all** absences.

©2015 School Improvement & Achievement. All rights reserved. Proprietary information not for copy or distribution.

Total Absence Summary, Year-over-Year, YTD



- The goal is to **increase** the number of students in the **Excellent** and **Satisfactory** categories and **decrease** the number of students in the **Manageable** and **Chronic** categories.
- We are **seeing improvement over last year** in the Chronic category.
- There are **things we can do to continue** improving these results so we don't plateau.

Data

A2A Definitions and Criteria

- **A2A Truant** – A student who has accumulated the equivalent of three or more full days of unexcused absences.
- **Excessively Excused** – A student who has accumulated the equivalent of seven or more full days of excused absences.
- **A2A Chronically Truant** – A student who is absent for 10% or more of the school year due to **unexcused** absences.
- **Chronically Absent** – A student who is absent for 10% or more of the school year due to **all** absences.

2015-16 District A2A Truancy Rates vs. A2A Average, YTD

the lower, the better

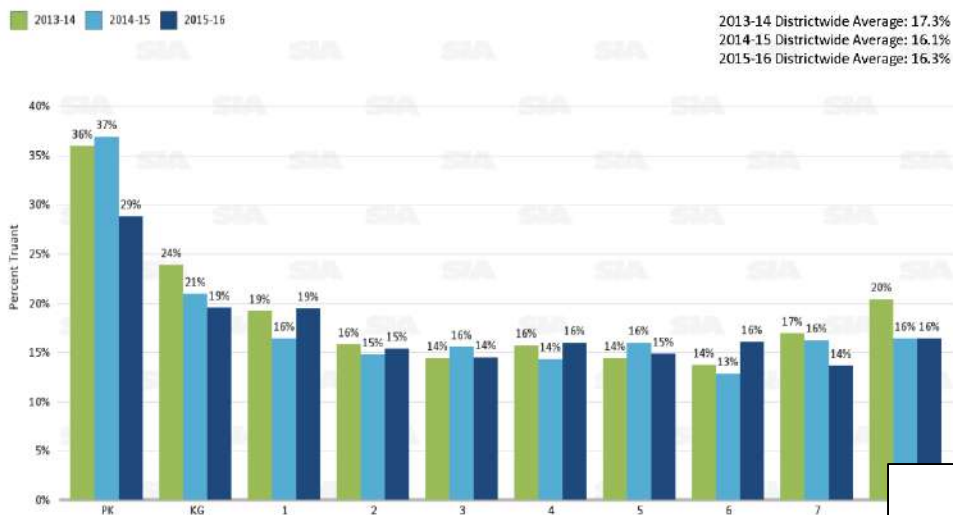


A2A Truant - A student who has accumulated the equivalent of three or more full days of unexcused absences.

Data as of 1/13/2016

Truant By Grade: Year-over-Year, YTD

the lower, the better



A2A Truant - A student who has accumulated the equivalent of three or more full days of unexcused absences.

Data as of 1/13/2016

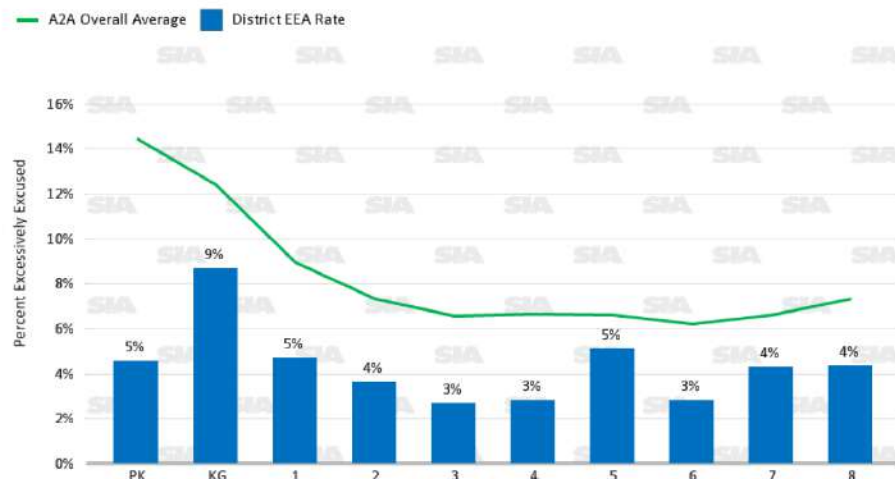
A2A Definitions and Criteria

- **A2A Truant** – A student who has accumulated the equivalent of three or more full days of unexcused absences.
- **Excessively Excused** – A student who has accumulated the equivalent of seven or more full days of excused absences.
- **A2A Chronically Truant** – A student who is absent for 10% or more of the school year due to **unexcused** absences.
- **Chronically Absent** – A student who is absent for 10% or more of the school year due to **all** absences.

© 2015 School Improvement & Assessment. All rights reserved. Proprietary information not for redistribution.

2015-16 District EEA Rate vs. A2A Average, YTD

the lower, the better

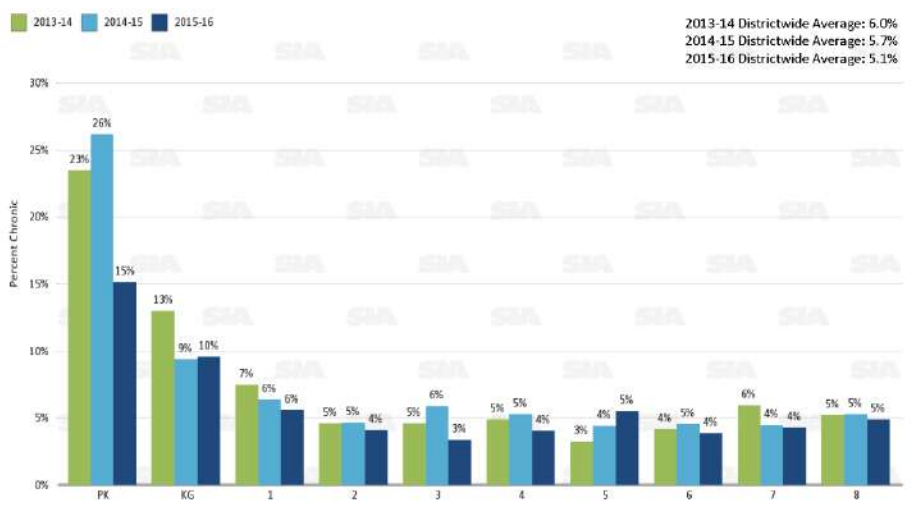


Excessively Excused - A student who has accumulated the equivalent of seven or more full day of excused absences.

Data as of 1/13/2016

Chronic By Grade: Year-over-Year, YTD

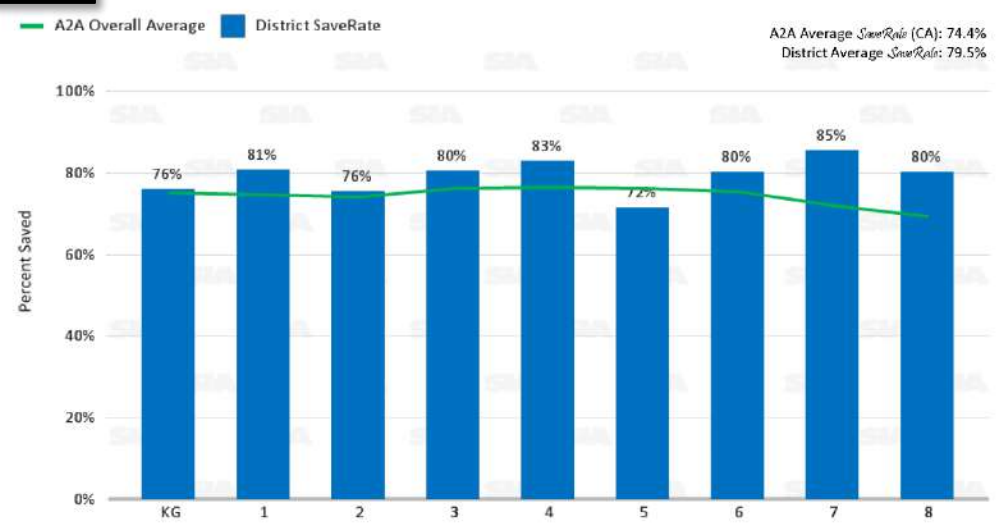
the lower, the better



Chronically Absent - A student who is absent for 10% or more of the school year due to **all** absences.
© 2015 School Innovations & Achievement. All rights reserved. Proprietary information not for resale/distribution. Data as of 1/13/2016

2015-16 Overall SaveRate vs. A2A Average, YTD

the higher, the better



© 2015 School Innovations & Achievement. All rights reserved. Proprietary information not for resale/distribution. Data as of 1/13/2016

A2A Definitions and Criteria

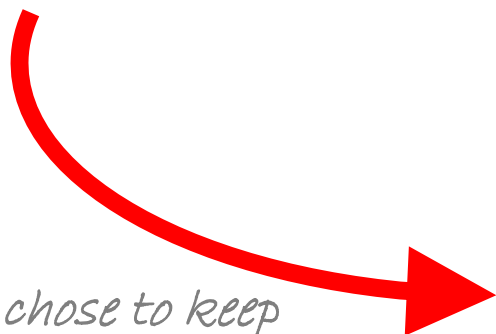
- **A2A Truant** – A student who has accumulated the equivalent of three or more full days of unexcused absences.
- **Excessively Excused** – A student who has accumulated the equivalent of seven or more full days of excused absences.
- **A2A Chronically Truant** – A student who is absent for 10% or more of the school year due to **unexcused** absences.
- **Chronically Absent** – A student who is absent for 10% or more of the school year due to **all** absences.

Year-To-Date Absences

Excused: 1,283

Unexcused: 4,010

Reasons parents chose to keep children home (August 2015)



- 8/6/2015 out of state in Texas
- 8/6/2015 mother was unaware of start date.
- 8/6/2015 still on vacation per guardian
- 8/7/2015 family vacation/reunion
- 8/6/2015 Parents were both out of town and no one could bring her.
- 8/10/2015 Obligations Out of Town
- 8/7/2015 out of town per mother
- 8/7/2015 Went to Mexico
- 8/6/2015 Did not know school started and were out-of-town.
- 8/6/2015 Out of town
- 8/6/2015 Out of country
- 8/11/2015 Family Issues
- 8/12/2015 personal problems per parent note
- 8/14/2015 out of town appt per parent note
- 8/6/2015 out of town per guardian
- 8/6/2015 out of town per guardian
- 8/12/2015 Family engagement
- 8/13/2015 Synchronized swimming competition
- 8/13/2015 Unable to take to school as parents went to hospital with sister
- 8/12/2015 family engagement
- 8/14/2015 Colombian Consulate
- 8/14/2015 out of town
- 8/17/2015 Out of Town Late Slept In
- 8/14/2015 Family trip
- 8/17/2015 Important Personal Business
- 8/12/2015 personal problem per parent note
- 8/24/2015 out of town family reunion per parent to teacher
- 8/24/2015 out of town family reunion per parent to teacher
- 8/17/2015 Family Vacation
- 8/17/2015 family vacation
- 8/21/2015 family went out of town
- 8/21/2015 Family matter.
- 8/27/2015 Family trip.
- 8/26/2015 personal day per parent
- 8/21/2015 private family matter
- 8/28/2015 Family Event
- 8/31/2015 Plans Made 4 Months Ago
- 8/28/2015 out of town/family reunion

Excellent Attendance Letters

- In 2014-15 there were 1,730 students or 19% of your student population who ended the year with excellent attendance (missed less than 1% of the year)
- As of January 13th of this school year, there are 2,198 (23.8%) students who currently have missed less than 1%
- Let's focus on these students and encourage them to continue their excellent attendance. By acknowledging these students we are reinforcing attendance goals and encouraging others to goal set - end the year with excellent attendance
- These positive, encouraging letters are designed to acknowledge an often unrecognized but very important group of students
- Recognition letters celebrate not only a student's attendance success, but also the parent/guardian efforts
- Recognition is an important communication tool