

# 2019-2020 AP Class Meeting

# Schoology Group

- Join the Advanced Placement at Rogers High School Group in Schoology:

**Access Code**

**FKN56-4XQ6Q**

# Summer Assignment General Information

- Benefits of AP
- You will be taking the AP test for each class you're signed up for next year.
- If the AP class you signed up for has a summer assignment, you need to complete it before you return!
- If you feel like this is too much for you to take on, talk to your counselor ASAP!

# How do you get books for the summer assignment?

- **Immediately** after this meeting is concluded go over to the library where you will be able to check out your books
  - If you do not get it today the main office is open from 8-2 next week and then will be closed until early August
- **PLEASE DO NOT** check out a book if you are positive you are going to be doing Running Start.

# Library Procedures for AP Courses/Textbooks/ Summer Assignments

- THE ONLY CLASSES THAT NEED TEXTBOOKS ARE:
  - AP Chemistry-Chemistry book
  - AP Biology-Biology Book
  - AP Senior English-Death of a Salesman
  - AP Psychology – Psych Textbook
  - AP US History – Main Textbook

# Mathematics

- AP Calculus
  - Mr. Wilber
- Pre-Calculus
  - Mrs. Query
- AP Statistics
  - Mr. Beni



# Topics in AP Calculus

## Pre-Calculus Topics to Know Really Well

- Graphing
- Solving Equations
- Logarithms
- Exponentials
- Trig Equations
- Trig Graphs
- 12 Basic Functions

$$() = '() = ''()$$

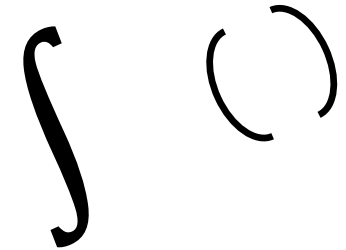
## First Main Concept—Derivatives

- Rules: Product, Quotient, Power, Chain, Trig
- Particle Motion: Position, Velocity, Acceleration, and Speed
- Linear Approximation
- Extreme Values
- Concavity
- Inflection Points
- Related Rates

$$\frac{(\sin)}{=} = \cos$$

## Basic Calculus Concepts

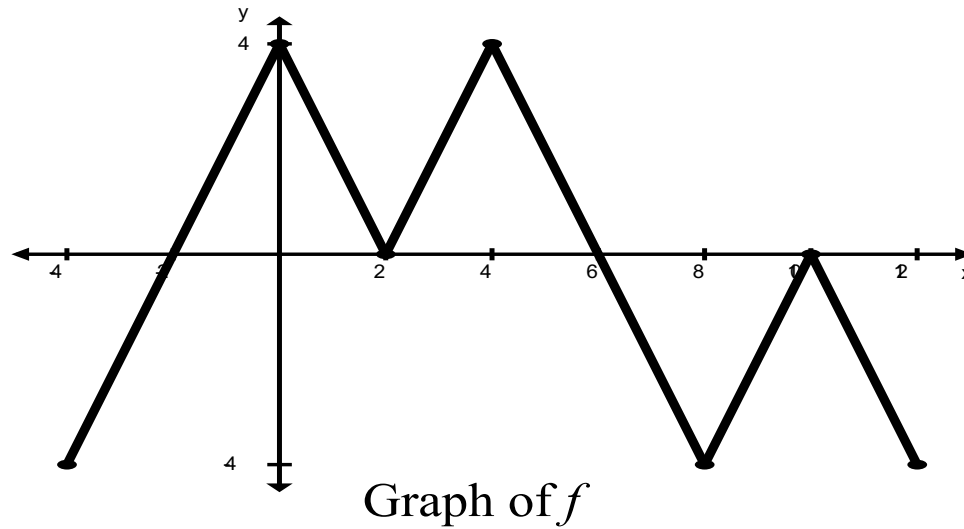
- Limits
- Continuity
- Tangent Lines
- Slopes of Curves
- Rates of Change Average and Instantaneous



$$\lim_{h \rightarrow 0} \frac{(\quad + h) - (\quad)}{h}$$

## Second Main Concept—Integrals

- Area  
Under a Curve, Between Curves
- Accumulation
- Average Value
- Fundamental Theorem of Calculus
- Volumes of Revolution and Solids



The figure above shows the graph of the piecewise-linear function  $f$ . For  $-4 \leq x \leq 12$  the function  $g$  is defined by  $g(x) = \int_2^x f(t) dt$ .

- (a) Does  $g$  have a relative minimum, a relative maximum, or neither at  $x=10$ ? Justify your answer.
- (b) Does the graph of  $g$  have a point of inflection at  $x=4$ ? Justify your answer.
- (c) Find the absolute minimum value and the absolute maximum value of  $g$  on the interval  $-4 \leq x \leq 12$ . Justify your answer.
- (d) For  $-4 \leq x \leq 12$  find all intervals for which  $g(x) \leq 0$ .



# Pre-Calculus

[dual credit available through CWU]

---

This course expands on what you learned in Pre-AP Algebra II (advanced algebra, functions, trigonometry) and then introduces new topics (matrices, conic sections, and derivatives).

- Each semester has a comprehensive final worth 20% of your overall grade.
- You *will* have homework every night (30-60 minutes on average).
- This class is faster and more challenging than Pre-AP Algebra II.
- There is a summer assignment.

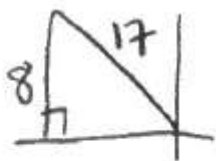
## Sample problems (from 2<sup>nd</sup> semester final review)

Use a double-angle or half-angle identity to find the exact value of each expression. Rationalize & simplify.

9.  $\sin \theta = \frac{8}{17}$  and  $\frac{\pi}{2} < \theta < \pi$

Find  $\cos 2\theta$

$$\begin{aligned} \cos 2\theta &= 1 - 2\sin^2 \theta \\ &= 1 - 2\left(\frac{8}{17}\right)^2 \\ &= 1 - 2\left(\frac{64}{289}\right) \\ &= \boxed{\frac{161}{289}} \end{aligned}$$



10.  $\csc \theta = -\frac{17}{8}$  and  $\frac{3\pi}{2} < \theta < 2\pi$

Find  $\sin \frac{\theta}{2}$

must be +, because half of everything in Q4 is in Q2 where sine is positive

$$\begin{aligned} \sin \frac{\theta}{2} &= + \sqrt{\frac{1 - \csc \theta}{2}} \\ &= \sqrt{\frac{1 - \frac{15}{17}}{2}} = \sqrt{\frac{\frac{17}{17} - \frac{15}{17}}{2}} = \sqrt{\frac{\frac{2}{17}}{2}} = \sqrt{\frac{2}{17} \cdot \frac{1}{2}} = \sqrt{\frac{1}{17}} = \boxed{\frac{\sqrt{17}}{17}} \end{aligned}$$

$8^2 + b^2 = 17^2$   
 $b = 15$

# Goals of AP Statistics

- Plan and conduct a study
- Describe patterns and departures from patterns
- Explore random phenomena using probability and simulation
- Estimate population parameters and test hypotheses

Approximately 80% of college majors require some form of Statistics...

The next slide is a list of college majors that either require a Statistics class or where the quantitative methods of Statistics is required.

# College Majors Requiring Statistics

## AGRICULTURAL SCIENCES

Agricultural and Environmental Plant Sciences  
Agricultural Business  
Agricultural Communication  
Agricultural Education  
Agricultural Mechanization and Business  
Agricultural Systems Management  
Agronomy  
Animal and Veterinary Sciences

- Animal Agribusiness
- Equine Business
- Preveterinary and Science

Crop Science  
Culinary Science  
Dairy Science  
Fisheries and Aquatic Sciences  
Food Science

- Food Science and Technology

Nutrition and Dietetics  
Forest Resource Management  
Forestry and Natural Resources  
Horticulture  
Plant and Environmental Sciences  
Plant Genetics  
Plant Science  
Soil and Water Sciences  
Wildlife and Fisheries Biology  
Wine and Viticulture

## MEDICAL PROFESSIONS

Exercise Studies  
Health Information Management  
Health Science

- Cardiovascular Imaging Leadership
- Health Promotion and Education
- Health Services Administration

Kinesiology  
Movement and Sport Sciences  
Nursing  
Nutrition  
Occupational Health  
Occupational Therapy  
Pharmaceutical Sciences  
Physical Therapy  
Pre-Pharmacy  
Pre-Rehabilitation Sciences  
Respiratory Care  
Speech Language Hearing

## BUSINESS

Accounting  
Actuarial Science  
Advertising  
Aviation Management  
Business  
Business Administration  
Construction Management  
Finance  
Financial Management  
Game Studies  
Information Science  
Management  
Marketing  
Operations Research  
Public Administration  
Recreation, Parks, and Tourism Administration

## ENGINEERING

Aerospace Engineering  
Agricultural Engineering  
Architectural Engineering  
Bioengineering  
Biomedical Engineering  
Bioresource and Agricultural Engineering

Chemical Engineering  
Civil Engineering  
Computer Information Systems  
Computer Science  
Computer Software Engineering  
Construction Science and Management  
Electrical Engineering  
Engineering Management and Protection  
Environmental and Natural Resources  
Environmental Engineering  
Industrial Design  
Industrial Engineering  
Industrial Management  
Industrial Technology and Packaging  
Landscape Architecture  
Materials Science and Engineering  
Mechanical Engineering  
Packaging Science  
Robotics

## MATHEMATICS AND SCIENCE

Animal Behavior  
Animal Science  
Applied Mathematics  
Applied Meteorology and Climatology  
Applied Physics  
Astronomy  
Atmospheric Science  
Biological Sciences  
Brain and Behavioral Science  
Chemistry  
Clinical Laboratory Science  
Comprehensive Science  
Earth Science  
Entomology  
Environmental Science

Genetics, Geology  
Geophysics, Hydrogeology  
Marine Sciences, Mathematical Sciences  
Mathematics, Meteorology  
Microbiology, Neuroscience  
Physics  
Planetary Science  
Pre-Health  
Pre-Veterinary Medicine  
Statistics

## SOCIAL STUDIES AND THE HUMANITIES

Anthropology  
Archaeology  
Child Development  
City and Regional Planning  
Communication Studies  
Comparative Ethnic Studies  
Criminal Justice  
Criminology  
Developmental and Family Science  
Economics  
Education  
Environmental Studies  
Film and Video Studies  
Geography  
Graphic Communications  
History  
Journalism  
Language and International Health  
Liberal Studies  
Library Science  
Linguistics  
Mathematics Teaching  
Political Science  
Public Policy  
Psychology  
Public Health  
Sociology  
Urban Studies

Statistics is about real life. As a result, questions are word problems with real life application. Here is an example of a question from Goal 1: Plan and Conduct a Study.

Before beginning a unit on frog anatomy, a seventh-grade biology teacher gives each of the 24 students in the class a pretest to assess their knowledge of frog anatomy. The teacher wants to compare the effectiveness of an instructional program in which students physically dissect frogs with the effectiveness of a different program in which students use computer software that only simulates the dissection of a frog. After completing one of the two programs, students will be given a posttest to assess their knowledge of frog anatomy. The teacher will then analyze the changes in the test scores (score on posttest minus score on pretest).

(a) Describe a method for assigning the 24 students to two groups of equal size that allows for a statistically valid comparison of the two instructional programs.

(b) Suppose the teacher decided to allow the students in the class to select which instructional program on frog anatomy (physical dissection or computer simulation) they prefer to take, and 11 students choose actual dissection and 13 students choose computer simulation. How might that self-selection process jeopardize a statistically valid comparison of the changes in the test scores (score on posttest minus score on pretest) for the two instructional programs? Provide a specific example to support your answer.



# English/Language Arts

- AP Seminar
  - Ms. Leonardy and Ms. Waring
- AP Research
  - Ms. Waring
- AP Language
  - Ms. Leonardy and Ms. Waring
- AP Literature and Composition
  - Ms. Hallberg

# AP Seminar

- Instructors:
  - Ms. Waring [warinnm@Puyallup.k12.wa.us](mailto:warinnm@Puyallup.k12.wa.us)
  - Mrs. Leonardy [leonarre@Puyallup.k12.wa.us](mailto:leonarre@Puyallup.k12.wa.us)
- Make sure you join the RHS Schoology Group!



# What Will We Do?

- **Question & Explore Current Issues**
- **Research and Present Information**
- **Collaborate Successfully with a Team**
- **Participate in Rewarding Discussion**
- **Prepare for College Success**

# Expectations

- **Apply feedback**
- **Manage your time**
- **Communicate with a team**
- **Attend class consistently**
- **Advocate for yourself**
- **Complete your work thoroughly**
- **Encourage your classmates**

# Announcements

- **Pick up a Summer Assignment**
- **If you plan to drop this course, please do so ASAP.**
- **If you are on the waiting list, check your email at the end of August.**



# AP Research

- Instructors:

- Ms. Waring [warinnm@Puyallup.k12.wa.us](mailto:warinnm@Puyallup.k12.wa.us)

- Make sure you join the RHS Schoology Group!

# What Will We Do?

- Complete a year-long research study.
- Present your findings in an academic paper and presentation.

*There is a Summer Assignment.*

# AP LANGUAGE & COMPOSITION (JUNIOR ENGLISH)

This course tests your skills in composition and comprehension, requires **close reading, thoughtful rhetorical analysis, and purposeful argumentation.**

Composition, mostly in the form of many on-demand essays, includes:

- **Analytical writing** with a focus on rhetorical strategies an author uses to construct their work.
- **Argumentative writing** and the ability to deconstruct an author's argument.
- **Synthesis of information** from multiple sources to support an argument.

**Comprehension**, mostly in the form of frequent multiple choice quizzes, are given to further test skills in rhetorical analysis of prose passages. Sample quiz question:

10. What purpose do lines 63–74 (“You may ... own feeling”) serve?
- (A) They contrast the appeal of a writer who merely confirms his readers’ views with that of a writer who boldly challenges them.
  - (B) They develop an analogy between the kinds of individuals people are attracted to and the kinds of writing they prefer.
  - (C) They challenge the idea that writers modify their ideas to appeal to a wide range of readers.
  - (D) They examine whether relationships based on shared ideas and interests are rewarding to both parties.
  - (E) They provide examples from various writers in which the appearance of good and evil is deceptive.

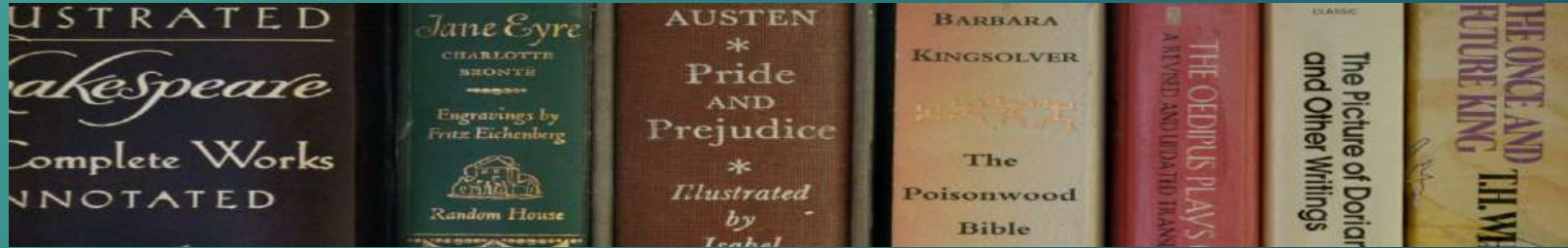


## Expectations/Requirements

- Complete frequent, short reading and writing homework assignments.
- Attend class regularly and use your time wisely.
- Participate in class discussions.

\*\*\*There is a *SUMMER ASSIGNMENT on Schoology.* 🌞

# AP Literature and Composition



- ▶ As stated in the course title, it is a class dedicated to the reading of literature and writing about it. Discussion and analysis are the core of the class.
- ▶ This course has an emphasis on world literature, utilizing texts from varying times and places, ancient to contemporary. To understand the intent of the authors (and in many cases their characters), we must also work to understand their *context*.
- ▶ Study includes an intense repertoire of poetry, short stories, novels, and drama, requiring a high degree of commitment and a strong work ethic. Students can expect daily reading and writing assignments, generally 30-45 minutes.
- ▶ **There is a summer assignment. Please come and see me with questions before the close of the school year.**

## 2013 AP<sup>®</sup> ENGLISH LITERATURE AND COMPOSITION FREE-RESPONSE QUESTIONS

### Question 3

(Suggested time—40 minutes. This question counts as one-third of the total essay section score.)

A bildungsroman, or coming-of-age novel, recounts the psychological or moral development of its protagonist from youth to maturity, when this character recognizes his or her place in the world. Select a single pivotal moment in the psychological or moral development of the protagonist of a bildungsroman. Then write a well-organized essay that analyzes how that single moment shapes the meaning of the work as a whole.

You may choose a work from the list below or one of comparable literary merit. Do not merely summarize the plot.

*The Adventures of Augie March*  
*Adventures of Huckleberry Finn*  
*All the Pretty Horses*  
*Atonement*  
*Black Boy*  
*Breath, Eyes, Memory*  
*Brown Girl, Brownstones*  
*The Catcher in the Rye*  
*Cat's Eye*  
*The Chosen*  
*The Cider House Rules*  
*The Color Purple*  
*David Copperfield*  
*The God of Small Things*  
*The Grapes of Wrath*  
*Great Expectations*  
*The House on Mango Street*  
*Invisible Man*  
*Jane Eyre*

*Jasmine*  
*The Joy Luck Club*  
*The Joys of Motherhood*  
*The Namesake*  
*A Portrait of the Artist as a Young Man*  
*Purple Hibiscus*  
*The Secret Life of Bees*  
*A Separate Peace*  
*Siddhartha*  
*Song of Solomon*  
*The Sorrows of Young Werther*  
*The Sound and the Fury*  
*The Story of Edgar Sawtelle*  
*Their Eyes Were Watching God*  
*A Thousand Splendid Suns*  
*To Kill a Mockingbird*  
*A Tree Grows in Brooklyn*  
*The Woman Warrior*

A sample  
essay  
question from  
a recent  
exam



# Science

- AP Biology
  - Ms. Cosme
- AP Chemistry
  - Mr. Schwebke
- AP Physics
  - Mr. Whitley

# AP BIOLOGY

## MUST DO'S

- SUMMER ASSIGNMENT
- READ & REVIEW NOTES NIGHTLY
- BRING IN QUESTIONS DAILY
- COMPLETE ONE FRQ PER WEEK
- COMPLETE LABS EACH WEEK



## HELPFUL HINTS FROM THE PROS

- \* USE QUIZLET APP FOR VOCAB
- \* WATCH BOZEMAN VIDEOS
- \* GET A TEST PREP BOOK EARLY
- \* ASK FOR HELP WHEN NEEDED
- \* TAKE PRACTICE EXAMS

“BIOLOGY...THE ONLY SCIENCE WHERE MULTIPLICATION & DIVISION MEAN THE SAME THING”



# 2019 AP BIO EXAM FRQ

## 2019 AP<sup>®</sup> BIOLOGY FREE-RESPONSE QUESTIONS

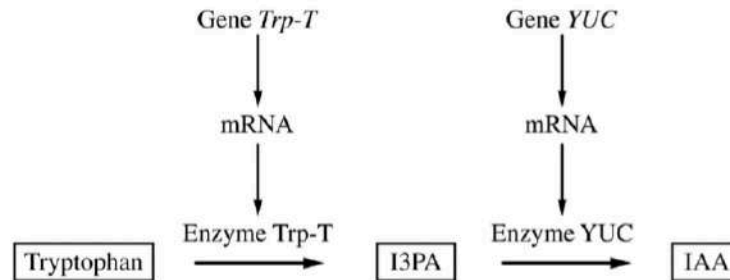


Figure 1. Model of two-step enzymatic plant pathway for synthesis of IAA from tryptophan

- I. Auxins are plant hormones that coordinate several aspects of root growth and development. Indole-3-acetic acid (IAA) is an auxin that is usually synthesized from the amino acid tryptophan (Figure 1). Gene *Trp-T* encodes an enzyme that converts tryptophan to indole-3-pyruvic acid (I3PA), which is then converted to IAA by an enzyme encoded by the gene *YUC*.
  - (a) **Circle** ONE arrow that represents transcription on the template pathway. **Identify** the molecule that would be absent if enzyme YUC is nonfunctional.
  - (b) **Predict** how the deletion of one base pair in the fourth codon of the coding region of gene *Trp-T* would most likely affect the production of IAA. **Justify** your prediction.
  - (c) **Explain** one feedback mechanism by which a cell could prevent production of too much IAA without limiting I3PA production.
  - (d) Rhizobacteria are a group of bacteria that live in nodules on plant roots. Rhizobacteria can produce IAA and convert atmospheric nitrogen into forms that can be used by plants. Plants release carbon-containing molecules into the nodules. Based on this information, **identify** the most likely ecological relationship between plants and rhizobacteria. **Describe** ONE advantage to the bacteria of producing IAA.
  - (e) A researcher removed a plant nodule and identified several “cheater” rhizobacteria that do not produce IAA or fix nitrogen. **Describe** the evolutionary advantage of being a bacterial cheater in a population composed predominantly of noncheater bacteria. Plants can adjust the amount of carbon-containing molecules released into nodules in response to the amount of nitrogen fixed in the nodule. **Predict** the change in the bacterial population that would cause the plant to reduce the amount of carbon-containing molecules provided to the nodule.

# AP Chemistry

To be successful:

Complete daily assignments and nightly readings as assigned (Don't try to play catch-up)

Ask questions

Complete pre-labs prior to day of lab

Study as many FRQs as possible

Watch videos

Get a test prep book

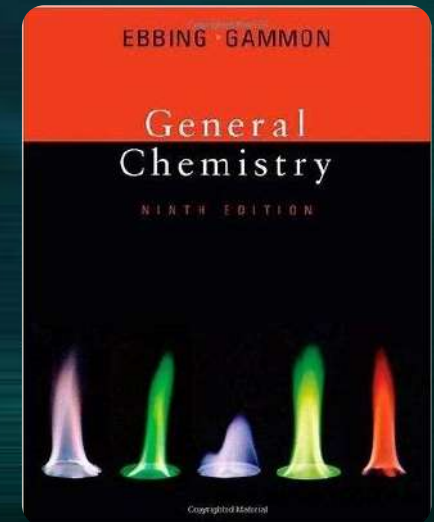
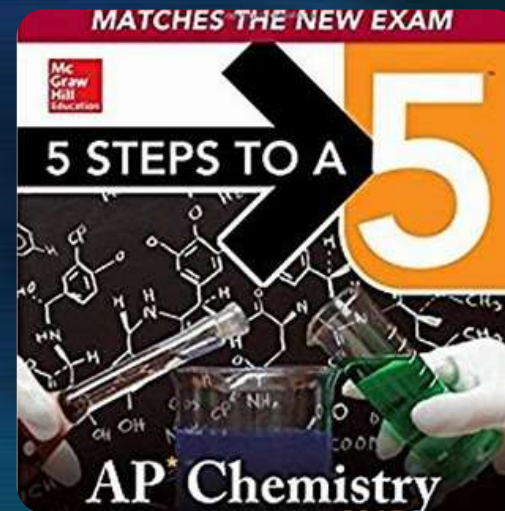
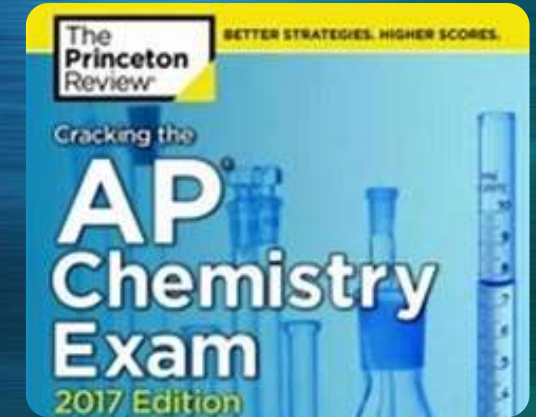
Recommendations:

AP Cliff Notes: AP Chemistry

5 Steps to a 5: AP Chemistry

AP Chemistry Practice Questions

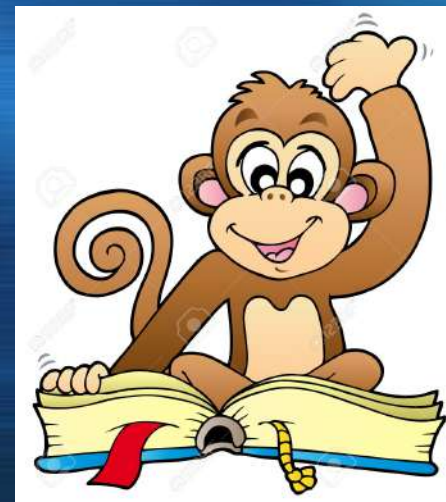
Princeton Review: Cracking the AP Exam





Are you ready for AP-Chemistry?

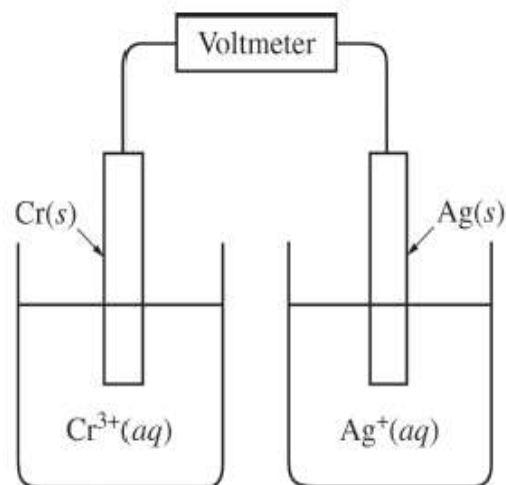
- You have strong math skills
- You got an A in Pre-AP Chemistry
- You always complete assignments and readings on time
- You have time every night to complete assignments or review concepts
- You ask questions or seek help when needed
- You attend class daily



Concepts to review over the summer:

- Element names and symbols
- Significant figures
- Naming compounds
- Density
- Physical and Chemical properties/change
- Writing and balancing chemical equations
- Stoichiometry

2018 AP<sup>®</sup> CHEMISTRY FREE-RESPONSE QUESTIONS



6. A student sets up a galvanic cell at 298 K that has an electrode of Ag(s) immersed in a 1.0 M solution of Ag<sup>+</sup>(aq) and an electrode of Cr(s) immersed in a 1.0 M solution of Cr<sup>3+</sup>(aq), as shown in the diagram above.
- (a) The student measures the voltage of the cell shown above and discovers that it is zero. Identify the missing component of the cell, and explain its importance for obtaining a nonzero voltage.

Half-Reaction	$E^\circ$ (V)
$\text{Ag}^+(\text{aq}) + e^- \rightarrow \text{Ag}(\text{s})$	+ 0.80
$\text{Cr}^{3+}(\text{aq}) + 3 e^- \rightarrow \text{Cr}(\text{s})$	?

- (b) The student adds the missing component to the cell and measures  $E^\circ_{\text{cell}}$  to be +1.54 V. As the cell operates, Ag<sup>+</sup> ions are reduced. Use this information and the information in the table above to do the following.
- Calculate the value of  $E^\circ$  for the half-reaction  $\text{Cr}^{3+}(\text{aq}) + 3 e^- \rightarrow \text{Cr}(\text{s})$ .
  - Write the balanced net-ionic equation for the overall reaction that occurs as the cell operates.
  - Calculate the value of  $\Delta G^\circ$  for the overall cell reaction in J/mol<sub>rxn</sub>.

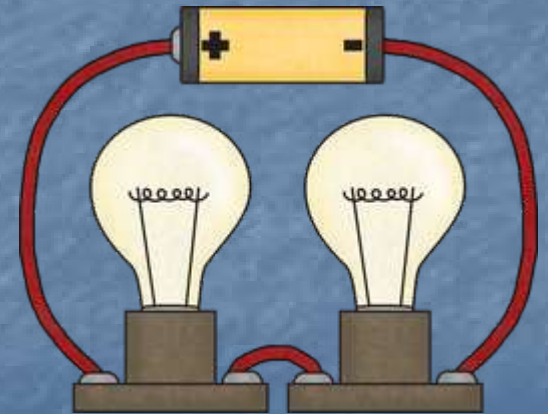
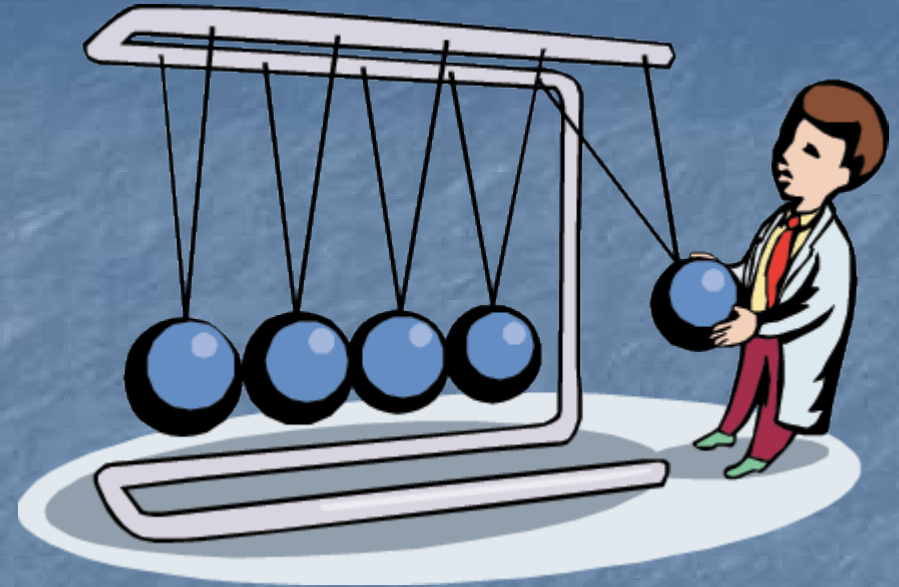
# AP Physics

## Topics

- Unit 1 - Motion and Force
- Unit 2 - Gravity and Rotation
- Unit 3 - Momentum and Energy
- Unit 4 - Oscillations and Waves
- Unit 5 - Electricity and Magnetism

## Post Test

- Unit 6 - Properties of Light and Optics





## Sample AP Physics Problem

Two small spheres are each given + 1 nC of charge and placed 1 cm apart (0.01m). What is the force of repulsion between the two spheres?

$$F = 9.0 \times 10^9 \text{ Nm}^2/\text{C}^2 \frac{(1 \times 10^{-9} \text{ C})(1 \times 10^{-9} \text{ C})}{(0.01 \text{ m})^2}$$

$$F = 9.0 \times 10^9 \text{ Nm}^2/\text{C}^2 \frac{1 \times 10^{-18} \text{ C}^2}{0.0001 \text{ m}^2}$$

$$F = (9.0 \times 10^9 \text{ Nm}^2/\text{C}^2) \left( 1 \times 10^{-14} \frac{\text{C}^2}{\text{m}^2} \right)$$

$$F = (9.0 \times 10^{-5} \text{ N})$$

# Foreign Language

- AP Spanish
  - Ms. Langston

# AP Spanish 4 – Study of Spanish Language and Culture

The AP Spanish 4 Class will prepare students for the AP Spanish Language and Culture Exam which assesses students' proficiencies in the interpersonal, interpretive, and presentational modes of communication.

As much as possible, students read and listen to authentic texts from the Spanish-speaking world throughout the exam.

Students will prepare for the 3 major components of the AP Exam:

1. 65 multiple choice questions that include reading and listening sections
2. A two-part written section that includes a response to an email and a persuasive essay
3. A speaking section where you hold a conversation and respond to prompts

Students will be immersed in the language in an all Spanish spoken classroom that encourages students to read and respond to authentic material, hold discussions to enhance their language skills, and improve their writing through various quick responses and longer essay writing.

This class will be a chance to increase language skills while learning new culture and diving deeper into the beautiful language, music, history and cultures of the many Spanish speaking countries around the world. ¡Bienvenidos a la clase y la oportunidad mejorar tu Español!

Ways to stay connected & informed over the summer:

- Join the Schoology group D2BX9-9WFS9 to see the summer discussions

Use the following link to check out test samples and information:

[http://apcentral.collegeboard.com/apc/public/exam/exam\\_information/4554.html#2015](http://apcentral.collegeboard.com/apc/public/exam/exam_information/4554.html#2015)

Summer Assignment 2018/19

You will be completing an AP Spanish Scavenger Hunt over the summer. This will be posted in the AP Spanish Schoology Page.

# Social Studies

- AP Psychology
  - Ms. Turner
- AP US History
  - Mr. Carlson
- AP Government
  - Mr. Zentz





# AP PSYCHOLOGY

Mrs. Turner

# AP PSYCHOLOGY

## Workload/requirements:

- About an hour a night
- Finish readings and assignments BEFORE to class
- Keep and organize all work
- Be in class and participate in activities

## The Exam:

- 100 Multiple Choice questions
- 2 Free-Response Questions

# SAMPLE FREE-RESPONSE QUESTION

**Scenario, issue, or problem**

- **Define and apply 6-8 Psychology terms**

**Ex. Two high-school kids take lots of classes together and go to the same college. How do these concepts increase the likelihood of a romantic relationship between them?**

- **Proximity**
- **Mere exposure effect**
- **Altruism**
- **Companionate love**

# SUMMER ASSIGNMENT

- **Read *Unit 1: Psychology's History and Approaches***
  - **Read (26 pages)**
  - **Color-coded notes**
  - **Vocab/Key term chart**
  - **Complete quizzes**
    - **Multiple Choices – in Schoology**
    - **FRQs written/ready for first day of school**
- **Unit 1 Exam Thursday September 5<sup>th</sup>**



**CHECK  
OUT  
BOOK**

# AP US History

- ▶ This course covers US History from ~1300 – present times.
  - ▶ Wide range of historical perspectives including Social, Political, Economic & Cultural history
  - ▶ Work to understand & apply primary source documents
  - ▶ Understand both the events & the context that surrounds them
- ▶ About 1.5-2 hours of homework / reading a night
  - ▶ Strong work ethic is needed to keep up on assignments, falling behind can lead to a spiral
- ▶ Assessments:
  - ▶ Essays, Multiple Choice tests & quizzes, projects, presentations & class discussions
- ▶ **There is a summer assignment!!**



**Directions:** Choose EITHER Question 2 or Question 3.

In your response you should do the following.

- **Thesis:** Present a thesis that makes a historically defensible claim and responds to all parts of the question. The thesis must consist of one or more sentences located in one place, either in the introduction or the conclusion.
- **Application of Historical Thinking Skills:** Develop and support an argument that applies historical thinking skills as directed by the question.
- **Supporting the Argument with Evidence:** Utilize specific examples of evidence to fully and effectively substantiate the stated thesis or a relevant argument.
- **Synthesis:** Extend the argument by explaining the connections between the argument and one of the following.
  - A development in a different historical period, situation, era, or geographical area.
  - A course theme and/or approach to history that is not the focus of the essay (such as political, economic, social, cultural, or intellectual history).

2. Evaluate the extent to which the ratification of the Fourteenth and Fifteenth Amendments to the Constitution marked a turning point in the history of United States politics and society.

In the development of your argument, explain what changed and what stayed the same from the period immediately before the amendments to the period immediately following them. (*Historical thinking skill: Periodization*)

# AP Government Course Description

- ▶ This course will give students an analytical perspective on government and politics in the United States. The course is a two semester course that is the equivalent to an introductory college-level course in United States Government. In addition, it will also prepare students for the opportunity to take the AP U.S. government and politics exam in May. Course content will cover general concepts used to interpret U.S. politics and the analysis of specific examples. Familiarity with the various institutions, groups, beliefs and ideas that constitute U.S. Government and politics is the foundation of skill development in this class.

## ▶ Textbook

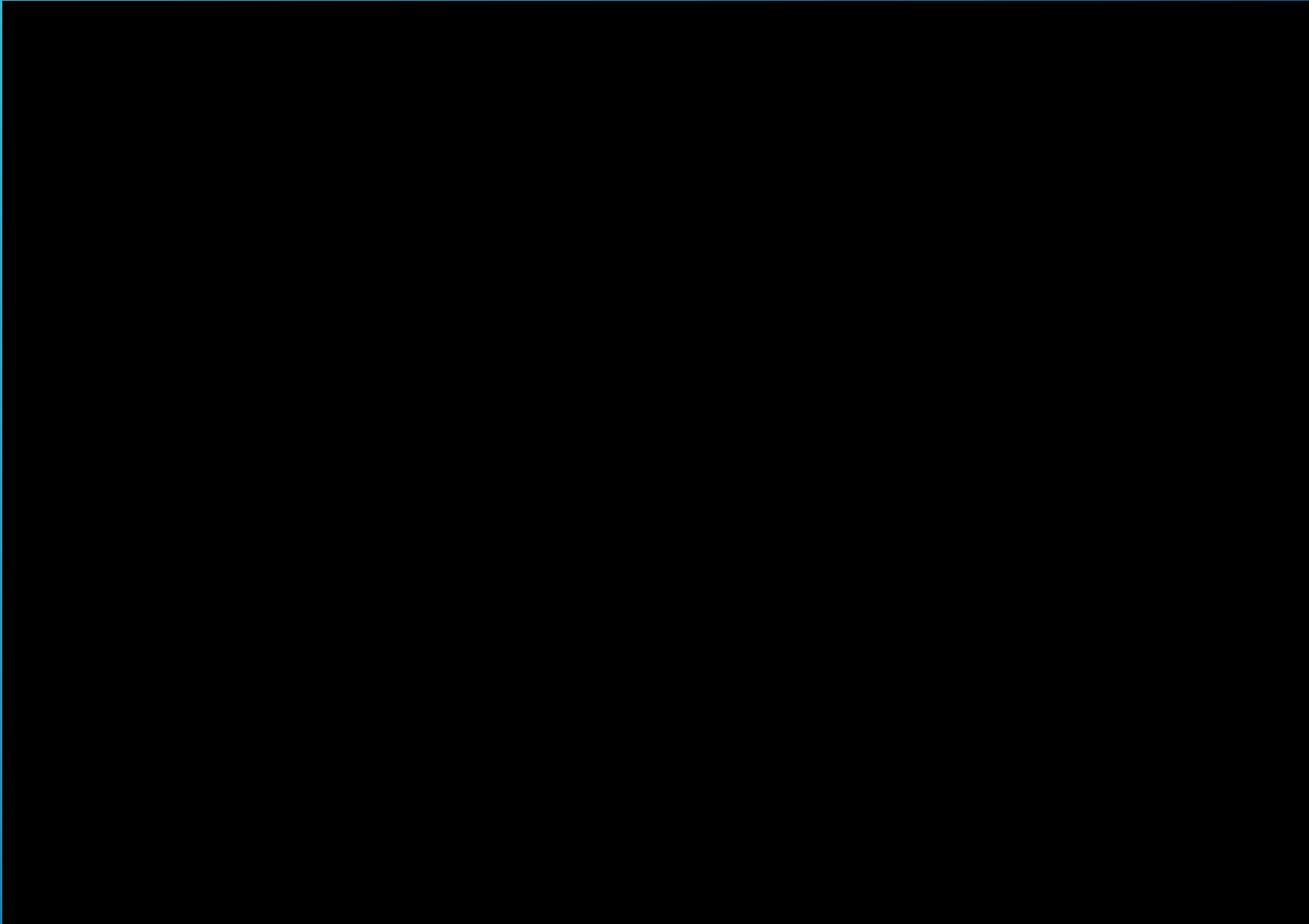
- ▶ George C. Edward, Martin P. Wattenburg, and Robert L. Lineberry. *Government in America: People, Politics, and Policy*, 10th ed. New York: Addison Wesley Educational Publishers, Inc., 2002.
- ▶ Woll, Peter, *American Government: Readings and Cases*, New York: Pearson Longman, 1999

## ▶ Current Events

Students are responsible for keeping up with the daily events in the nation and the world. Students can find important information on Mr. Zentz's home page on eschools. Websites and Links to important news sources can be found at the following address.

<https://www.edline.net/UserProfileView.page>

# Sample FRQ (Free Response Question)



# Schoology Group

- ▶ Join the Advanced Placement at Rogers High School Group in Schoology:

**Access Code**

**FKN56-4XQ6Q**

# Library Procedures for AP Courses/Textbooks/ Summer Assignments

- ▶ If you need a textbook, go out the commons to the back of the library to get your book for your summer assignment
- ▶ THE ONLY CLASSES THAT NEED TEXTBOOKS ARE:
  - ▶ AP Chemistry-Chemistry book
  - ▶ AP Biology-Biology Book
  - ▶ AP Senior English-Death of a Salesman
  - ▶ AP Psychology – Psych Textbook
  - ▶ AP US History – Main Textbook



Good luck!

