

# USFS Collaboratives and Local Benefit:

## A Case Study Approach to Defining Local

Allison Reeves-Jolley

Erica Hann

Jonathan Kusel

# Background and Purpose

## ○ CFLR

Title IV CFLR Program legislation details the purpose of the program (Section 4001, page 1):

“The purpose of this title is to encourage collaborative, science-based ecosystem restoration of priority forest landscapes through a process that (1) encourages ecological, **economic, and social sustainability**...(4) demonstrates the degree to which...(B) the use of forest restoration byproducts can offset treatment costs while benefitting local rural economies...”

The CFLR Program mandates that these CFLRs benefit (and monitor) local economies specifically through job creation (Section 4003, page 4):

“...(7) **benefit local economies** by providing **local** employment or training opportunities through contracts, grants, or agreements for restoration planning, design, implementation or monitoring with (a) **local** private, nonprofit, or cooperative entities; (b) Youth Conservation Corps crews or related partnerships, with State, **local**, and non-profit youth groups; (c) existing or proposed small or micro-businesses, clusters, or incubators; or (d) other entities that will hire or train **local** people to complete such contracts, grants, or agreements...”

## ○ National Cohesive Wildfire Strategy Collaboratives

Not mandated by legislation, but genuine interest and commitment to “local”

# Background and Purpose, Continued

## Case Study Approach to Generate:

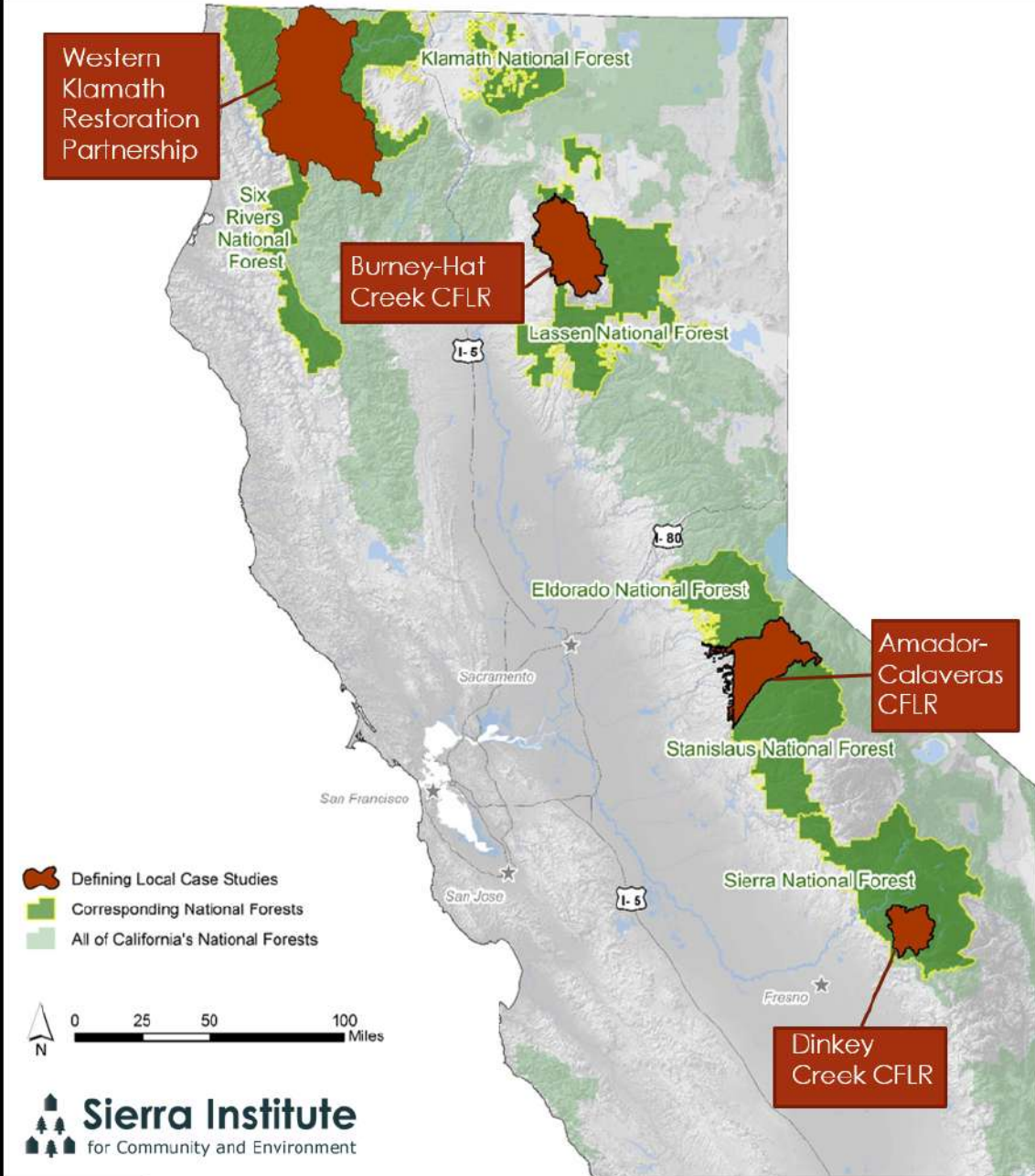
1. Project specific delineations
2. Replicable principles

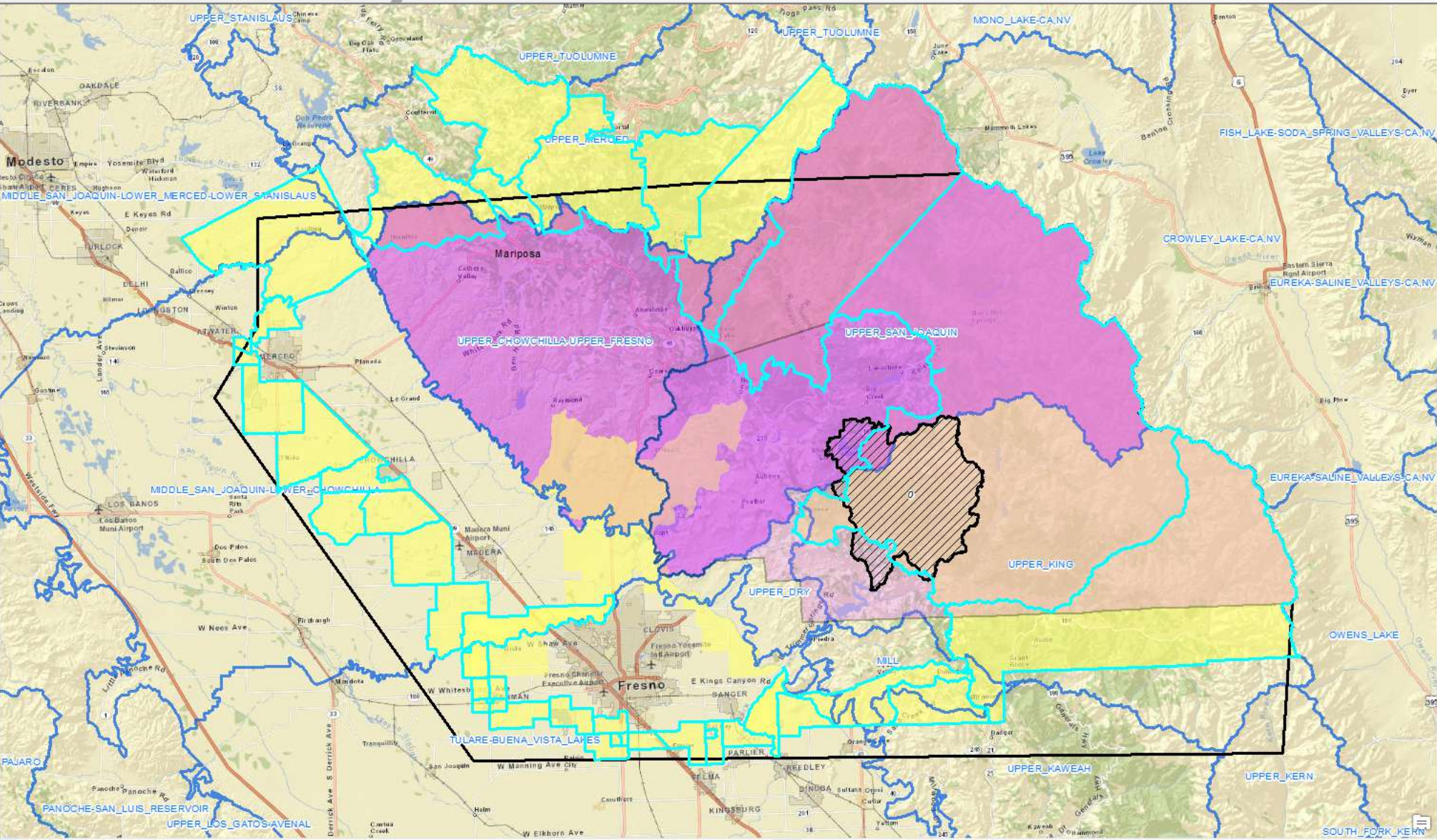
*Designed for implementation in correspondence with Sierra Institute's  
Local Contracting Work*

# Methods

- Review of literature and social science best practices
- Interviews
- Data Analysis
  - Interview data
  - Geospatial data

## Map 1: Defining Local Case Studies: Four USFS Collaborative Groups





- Primary Data
  - Dinkey CFLR Project Boundary
  - Delineations
    - 1st Tier Local Community, Terra Bella
    - 1st Tier of Local Communities
    - 2nd Tier of Local Communities
    - Alternative 2nd Tier Boundary
  - 1st Tier of Communities Local to the Dinkey
  - calw221\_huc\_8
  - Tier2.I
  - Tier2.II
  - tl\_2013\_06\_bg selection 3
  - tl\_2013\_06\_bg selection 2
  - Tier2.IIIremovewestCBGs
  - 2010 Census Block Group Boundaries
  - Chawanakee Area
  - Boundaries
    - Surrounding School Districts
    - CA\_Counties
    - National Parks
  - City Boundaries
  - Contracts
    - Contracts Awarded by Sierra National Forest
    - CA Contracts Awarded\* by Sierra NF
    - OR Contracts Awarded\* by Sierra NF, Frequency
  - Roads
  - Society/CaliforniaSchools
    - Public Schools
    - Private Schools
  - Basemap
- Reference Frame
  - DinkeyCFLRBoundary
  - 1st Tier of Communities Local to the Dinkey

# Results: Individual Delineations

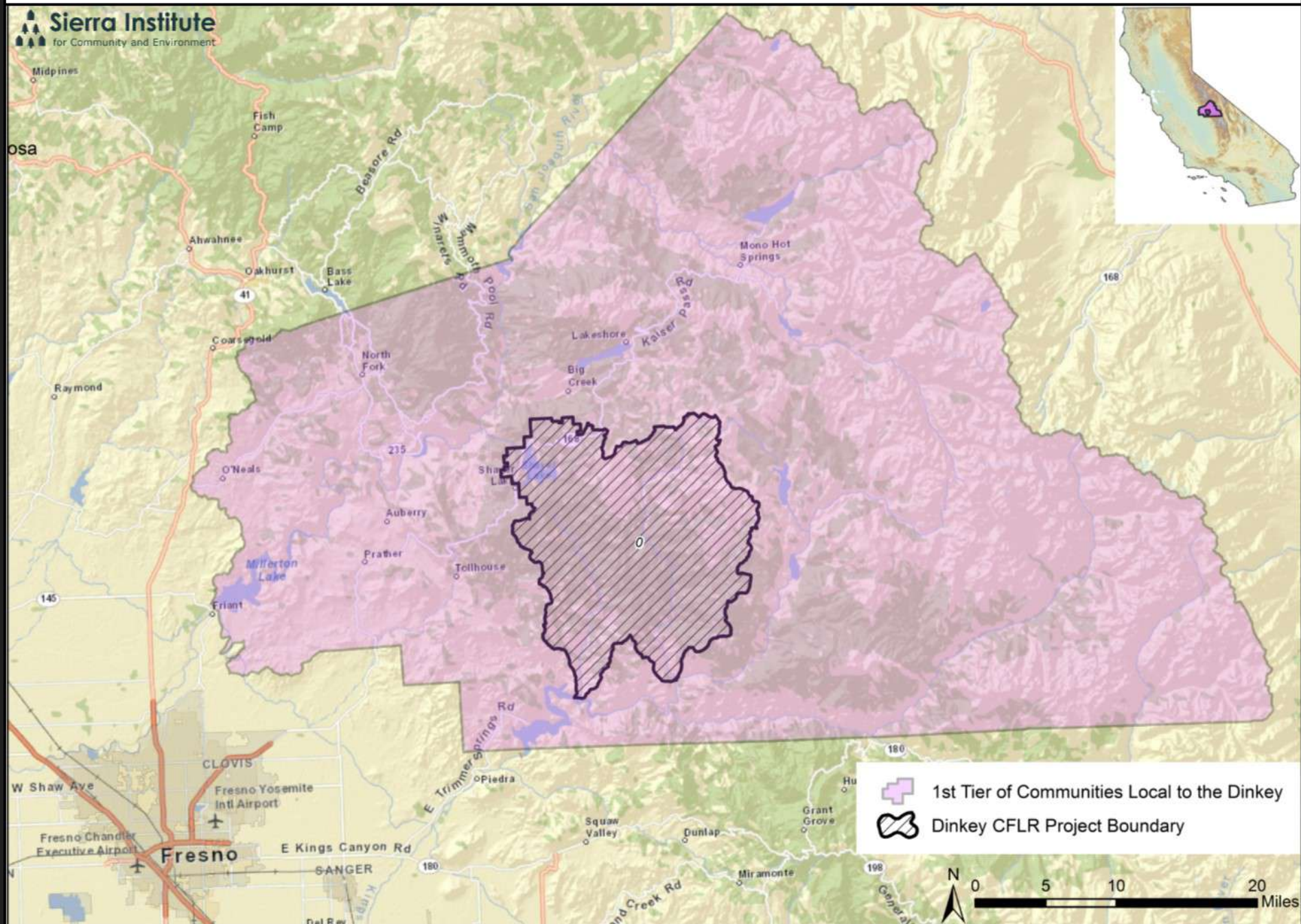
○ Dinkey

○ ACCG

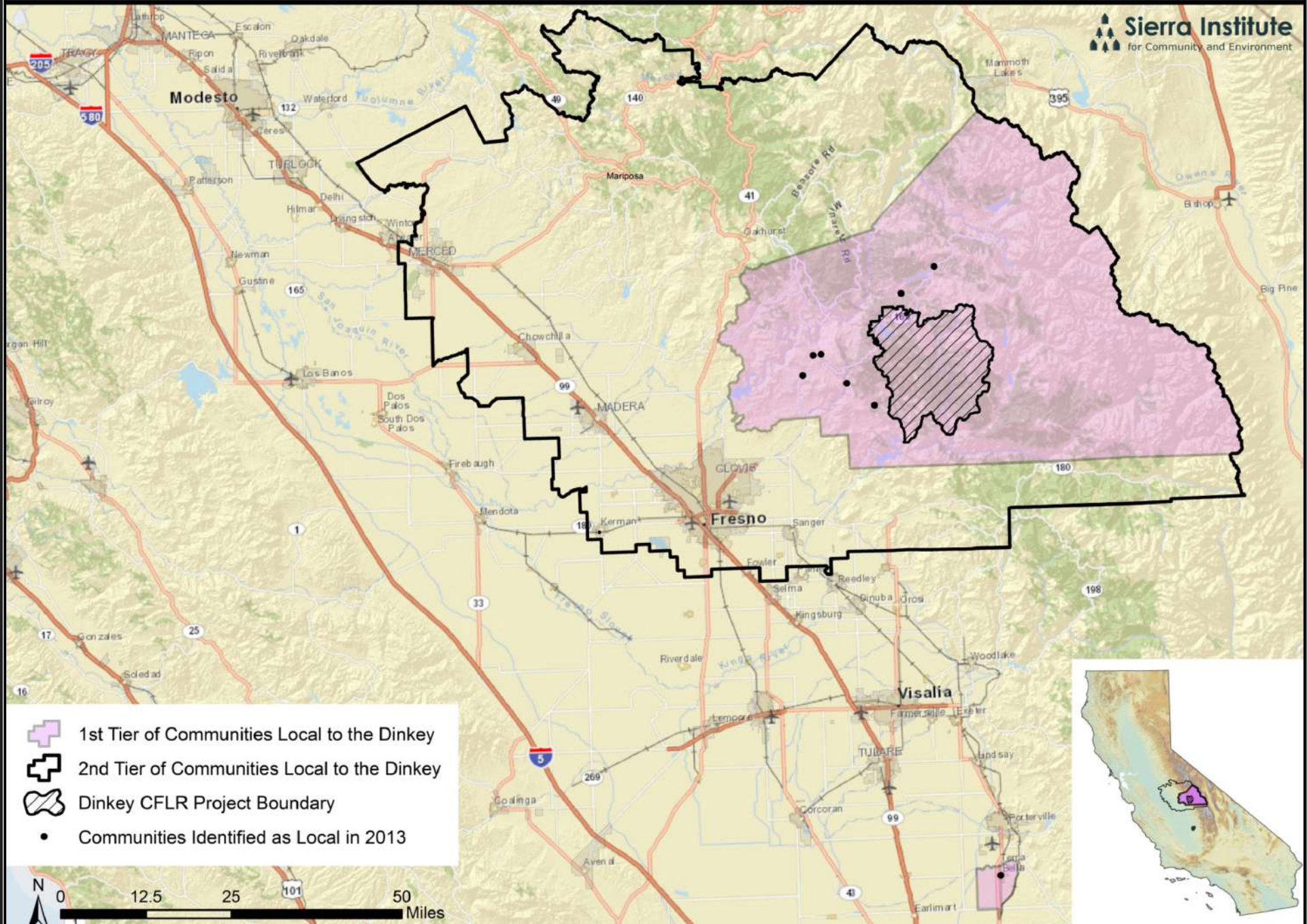
○ Burney Hat Creek

○ WKRP

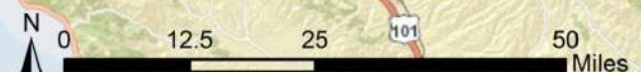
# Map 10: 1st Tier of Communities Local to the Dinkey



# Map 11: 2nd Tier of Communities Local to the Dinkey

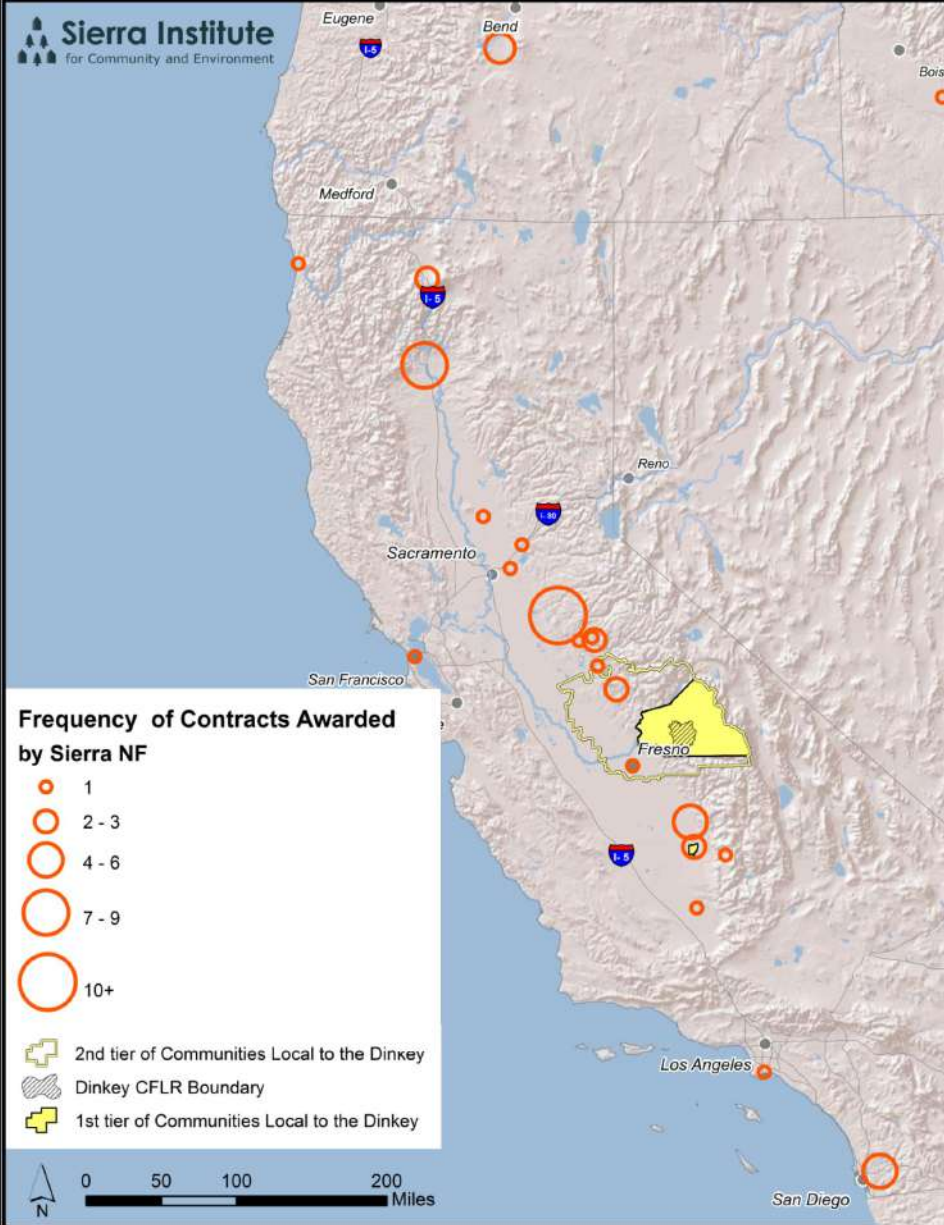


-  1st Tier of Communities Local to the Dinkey
-  2nd Tier of Communities Local to the Dinkey
-  Dinkey CFLR Project Boundary
-  Communities Identified as Local in 2013



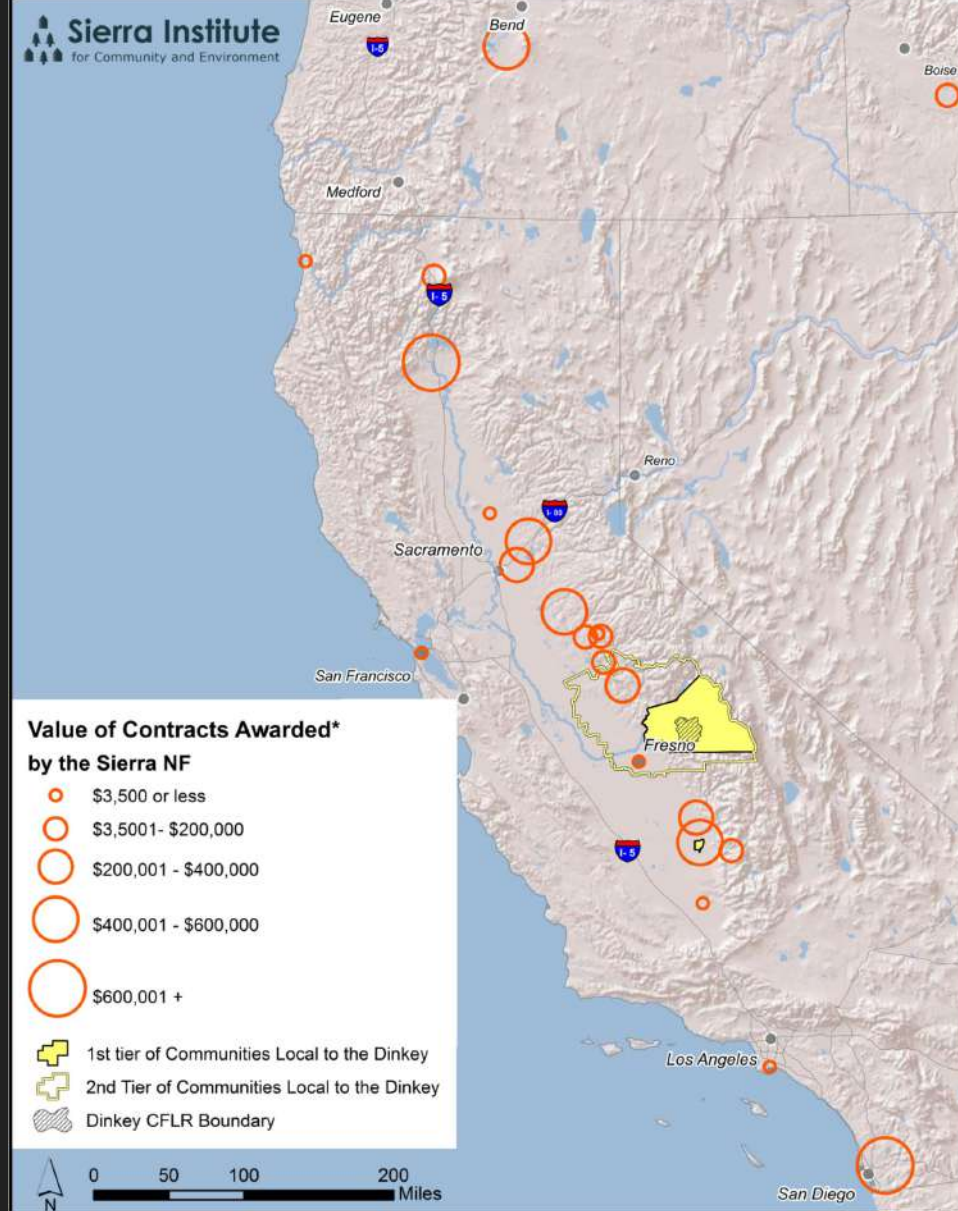


**Map 12: Frequency of Contracts Awarded\* by the Sierra National Forest relative to the Dinkey National Forest**



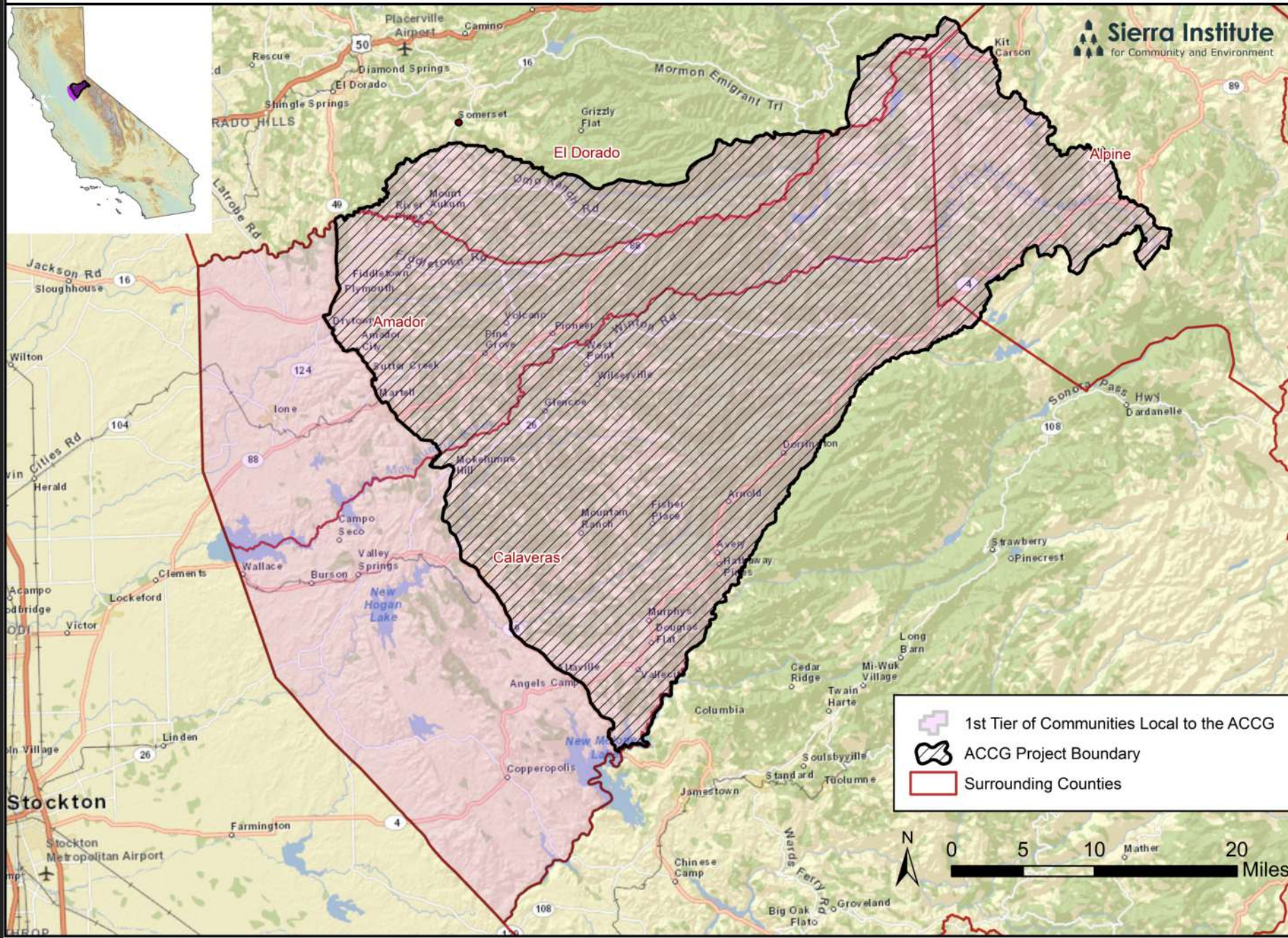
\*USFS Contract Data from 2010-2014 was refined by the process documented in *Appendix B: Processes of refining USFS Contract Data*. Contract data shown above only include that refined data.

**Map 13: Value of Contracts Awarded\* by the Sierra National Forest relative to the Dinkey National Forest**

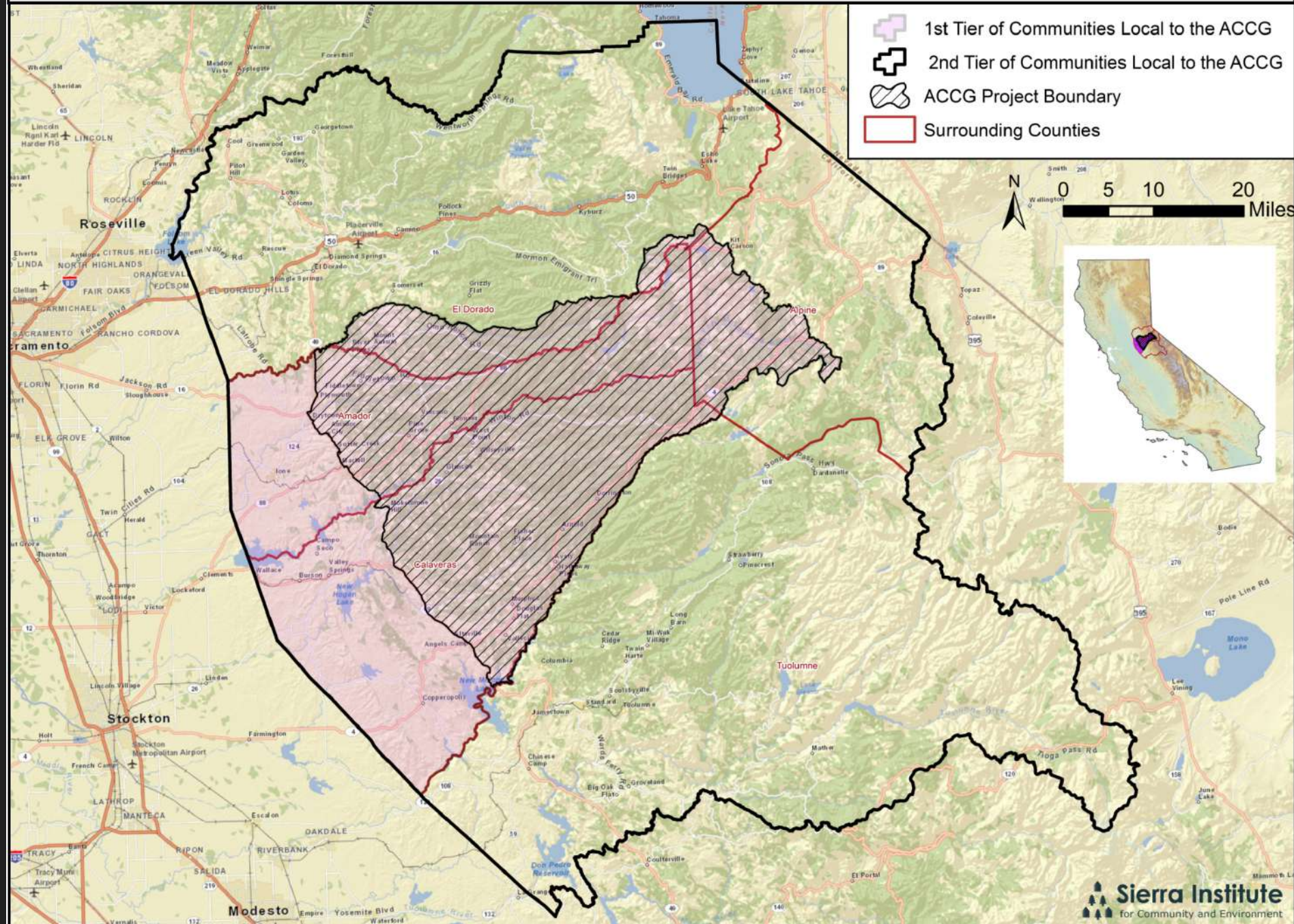


\*USFS Contract Data from 2010-2014 was refined by the process documented in *Appendix B: Processes of refining USFS Contract Data*. Contract data shown above only include that refined data.

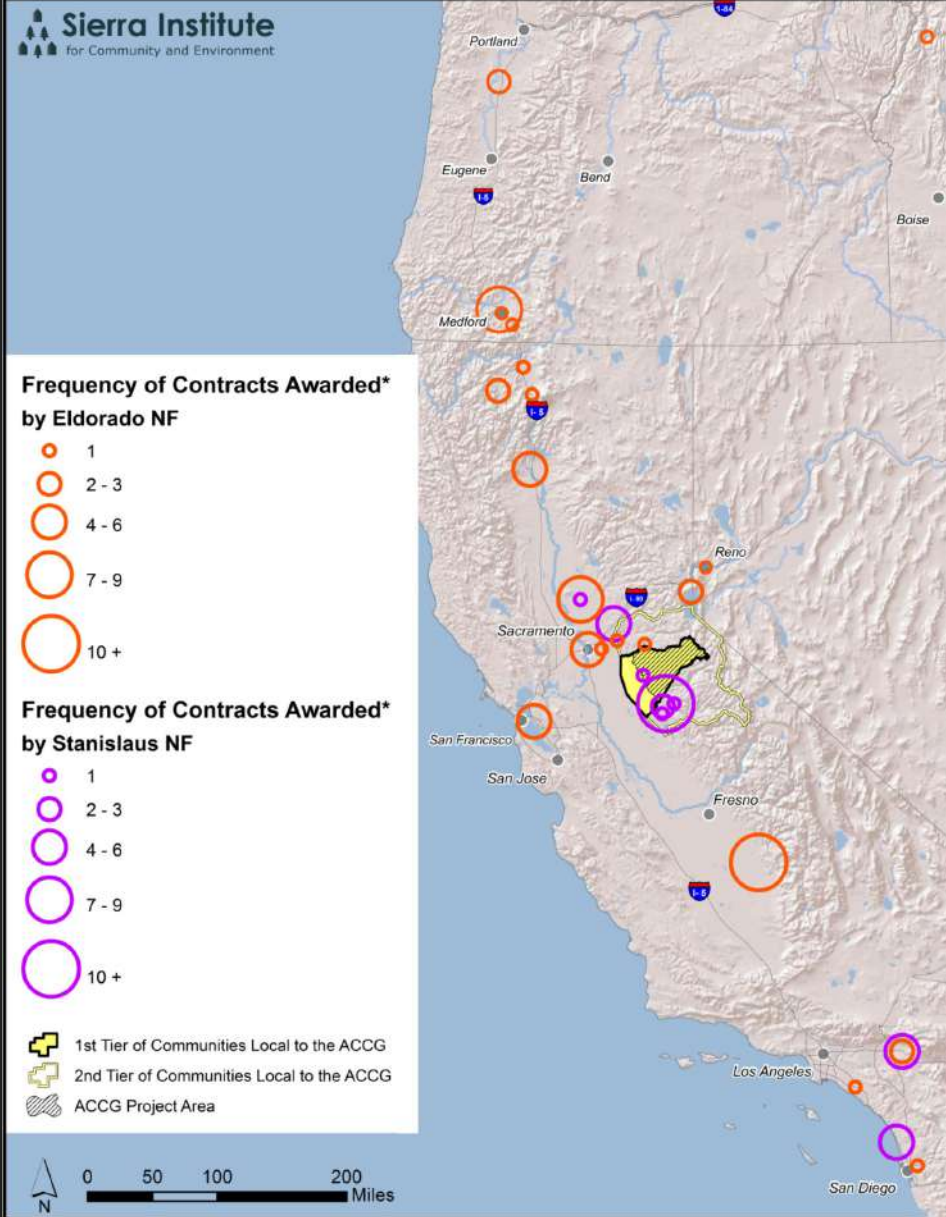
# Map 2: 1st Tier of Communities Local to the ACCG



# Map 3: 2nd Tier of Communities Local to the ACCG

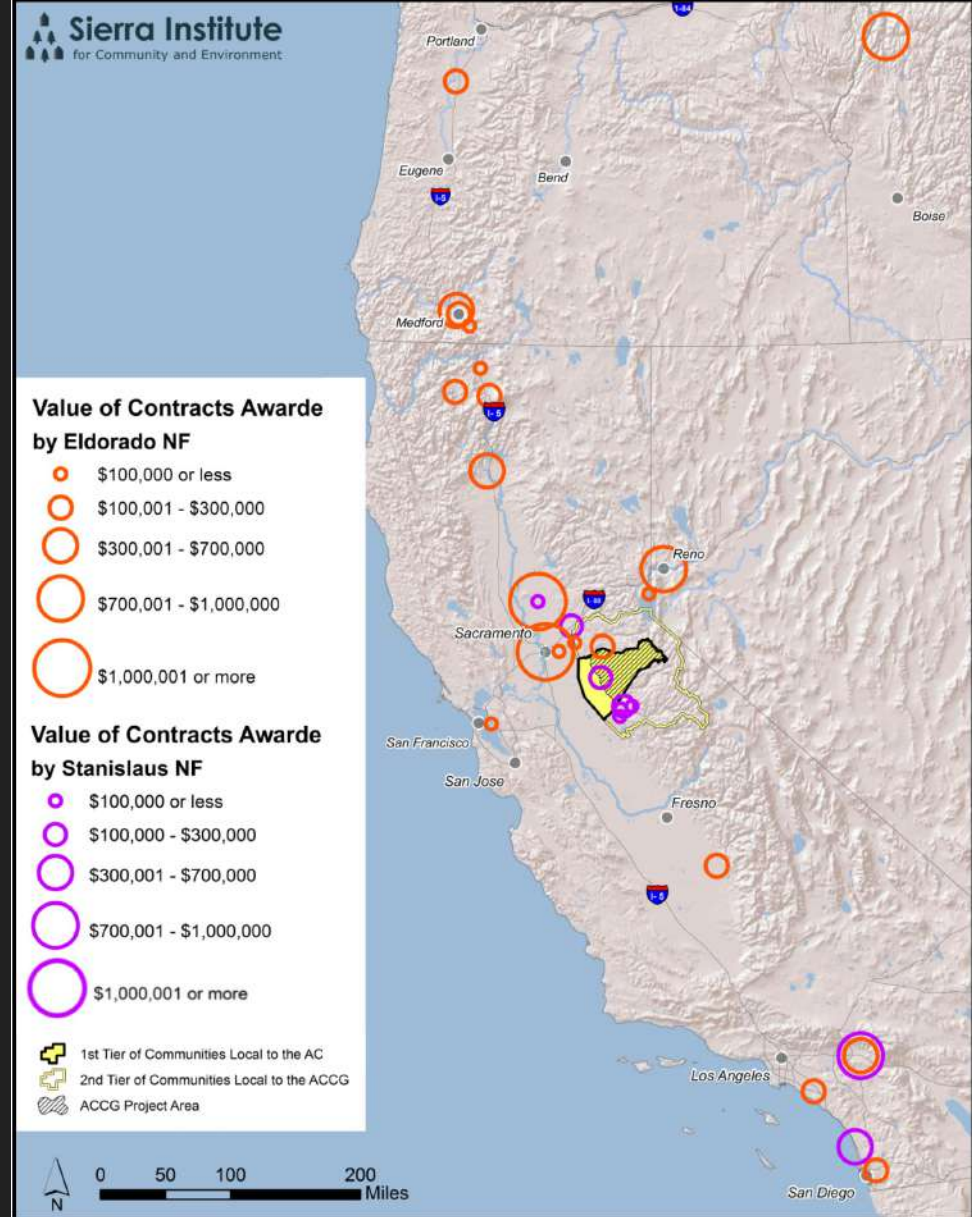


**Map 4: Frequency of Contracts Awarded\* by the Eldorado and Stanislaus National Forests relative to the ACCG**



\*USFS Contract Data from 2010-2014 was refined by the process documented in *Appendix B: Processes of refining USFS Contract Data*. Contract data shown above only include that refined data.

**Map 5: Value of Contracts Awarded\* by the Eldorado and Stanislaus National Forests relative to the ACCG**



\*USFS Contract Data from 2010-2014 was refined by the process documented in *Appendix B: Processes of refining USFS Contract Data*. Contract data shown above only include that refined data.

# Inter-Case Study Patterns and Trends

- Concentric Tiers
- California as a Third Tier
- Units
- Characteristics of Importance
- Addressing Contractor Capacity
- Nuances to Implementation re: Ancestral Homelands
- The Importance of Site-Specific Research

# USFS Collaboratives and Local Benefit:

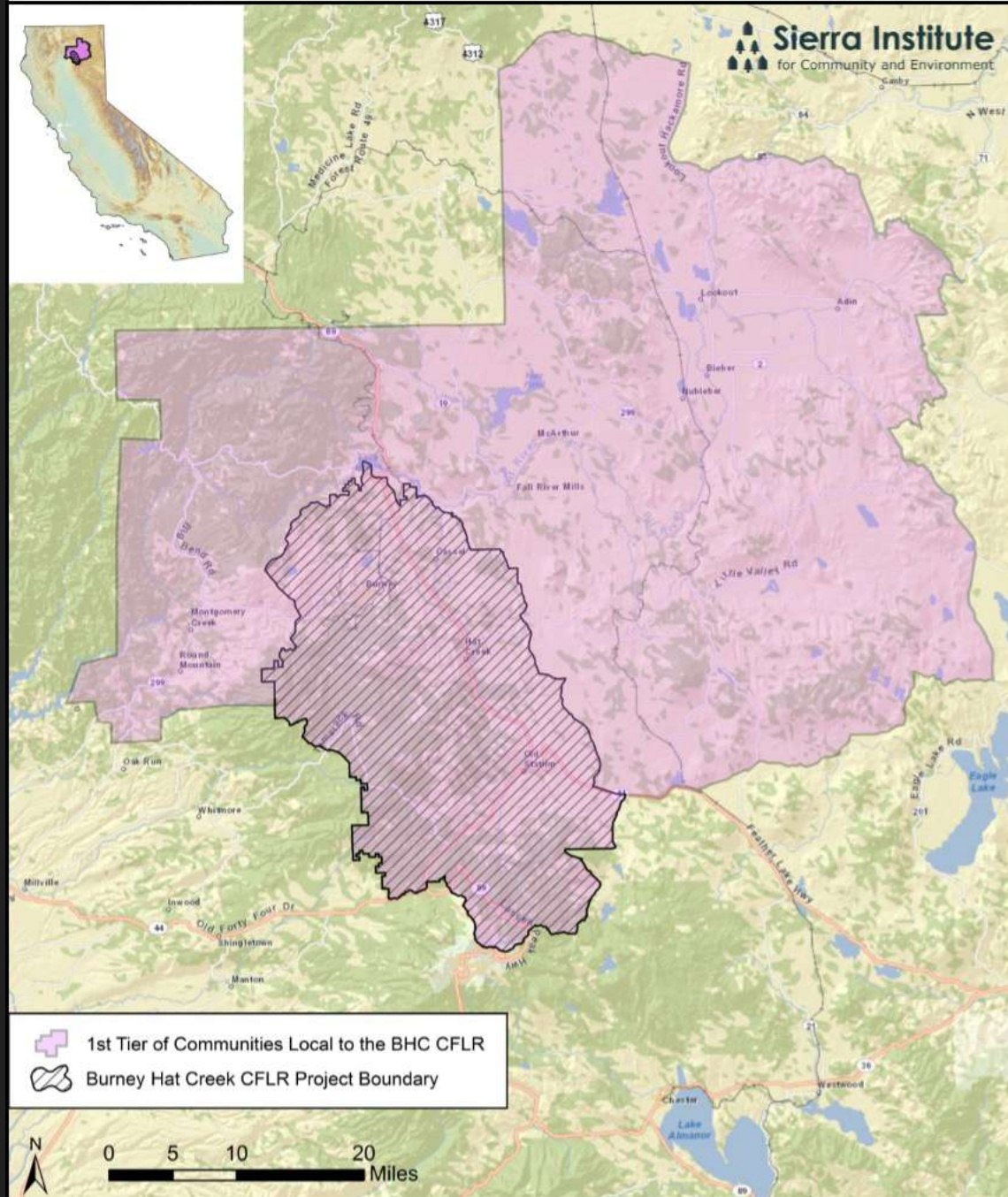
## A Case Study Approach to Defining Local

Allison Reeves-Jolley

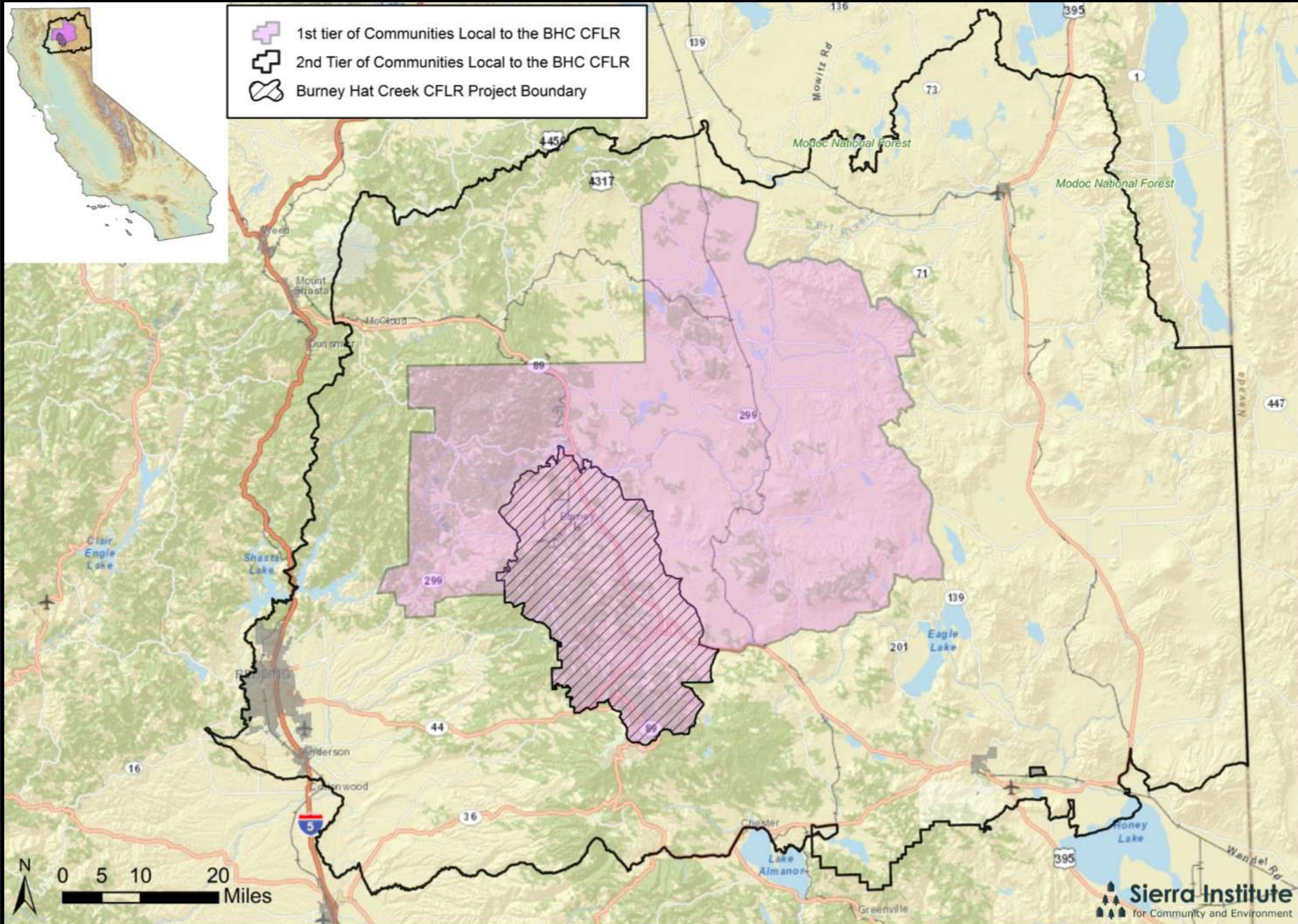
Erica Hann

Jonathan Kusel

# Map 6: 1st Tier of Communities Local to the BHC

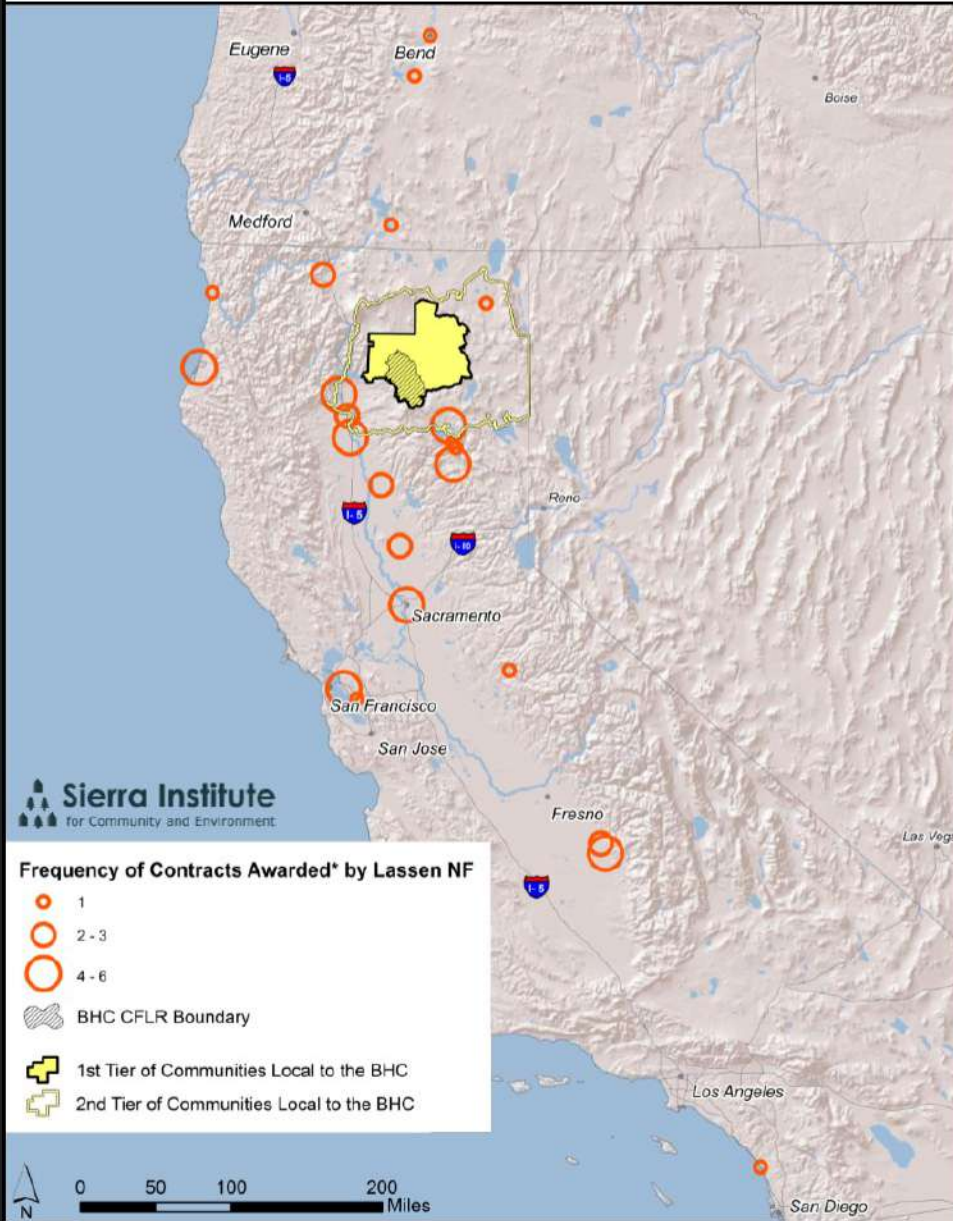


# Map 7: 2nd Tier of Communities Local to the BHC



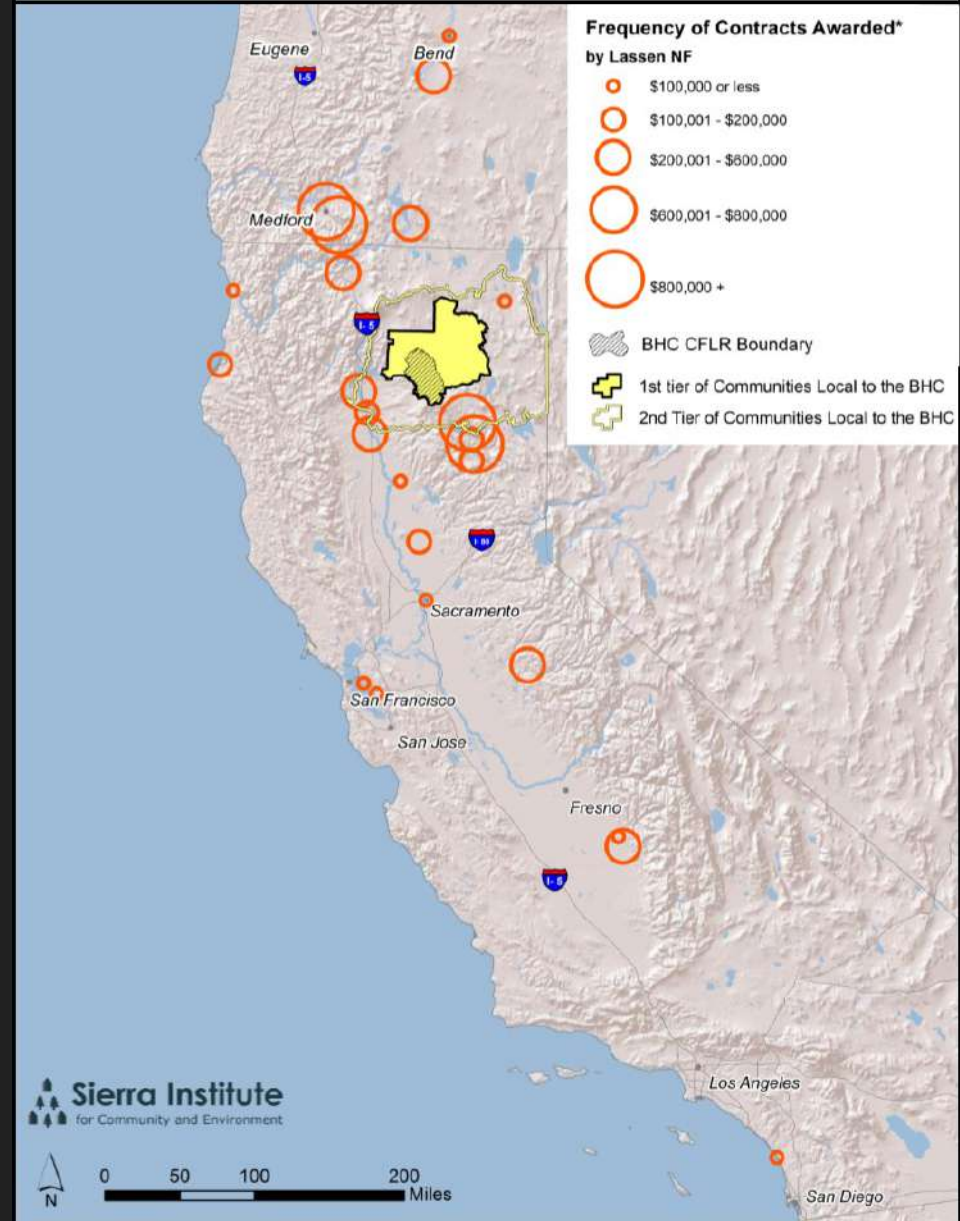


**Map 8: Frequency of Contracts Awarded\* by the Lassen National Forest relative to the BHC**



\*USFS Contract Data from 2010-2014 was refined by the process documented in *Appendix B: Processes of refining USFS Contract Data*. Contract data shown above only include that refined data.

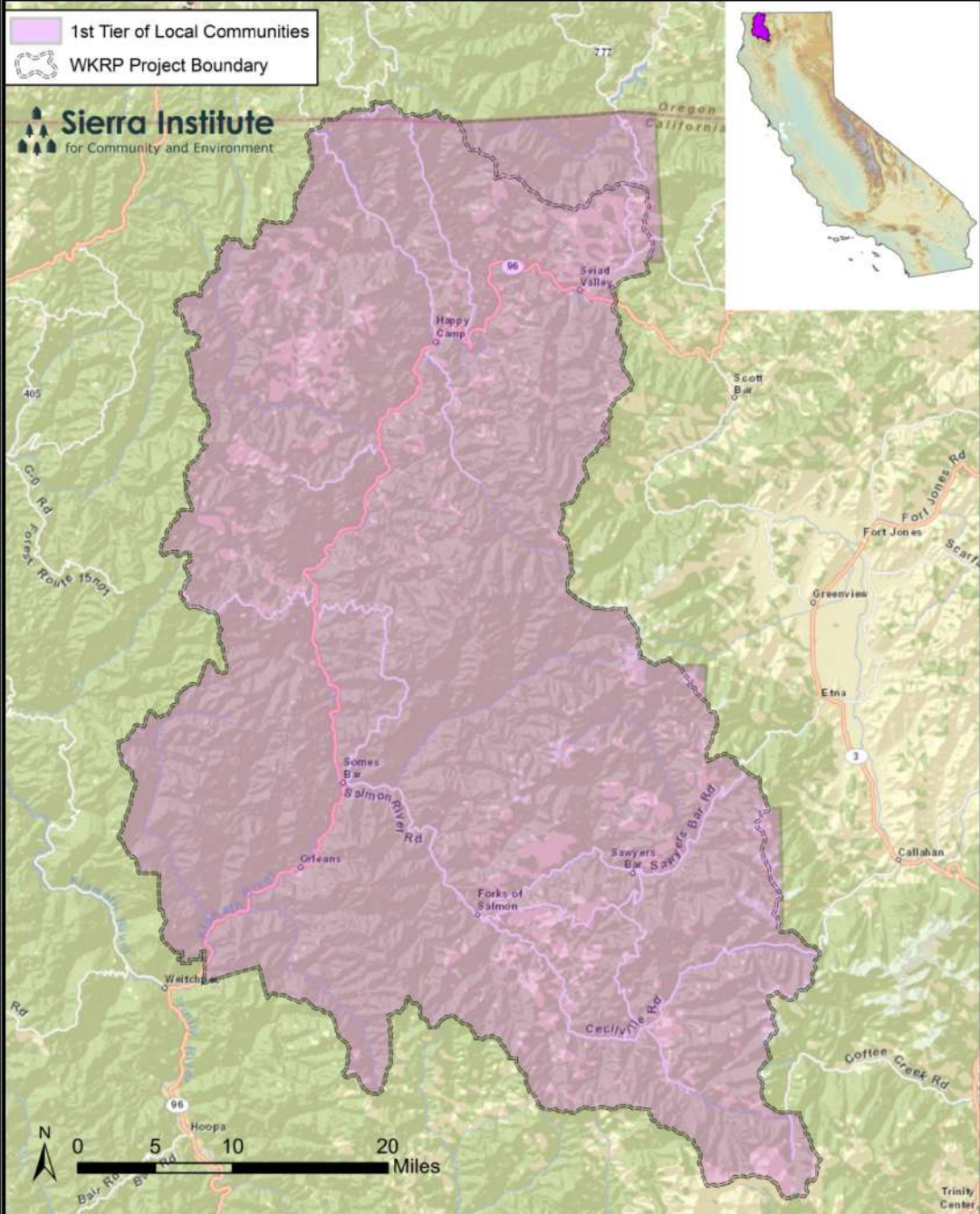
**Map 9: Value of Contracts Awarded\* by the Lassen National Forest relative to the BHC**



\*USFS Contract Data from 2010-2014 was refined by the process documented in *Appendix B: Processes of refining USFS Contract Data*. Contract data shown above only include that refined data.

# Map 14: 1st Tier of Communities Local to the WKRP

1st Tier of Local Communities  
WKRP Project Boundary

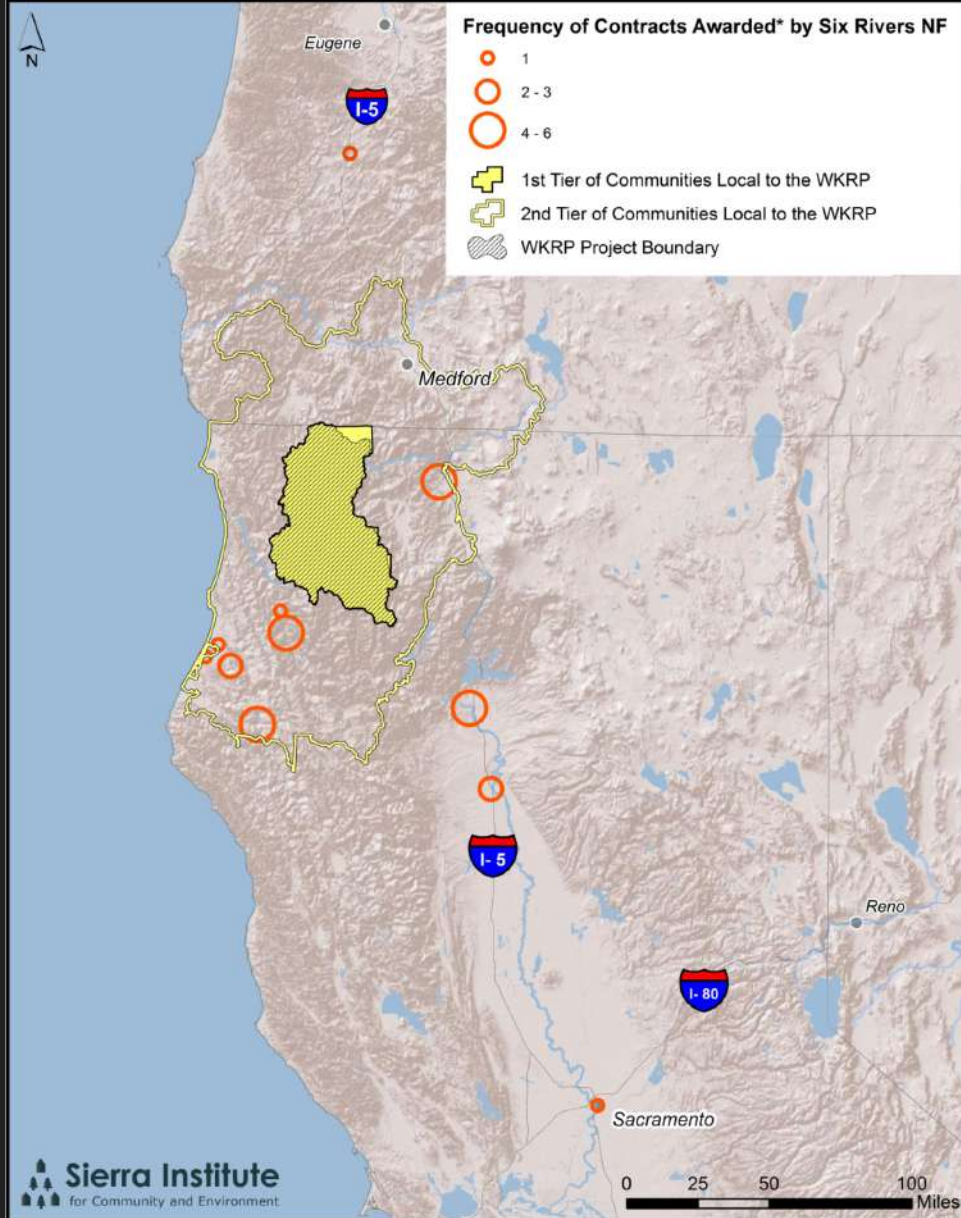


Trinity Center

# Map 15: 2nd Tier of Communities Local to the WKRP

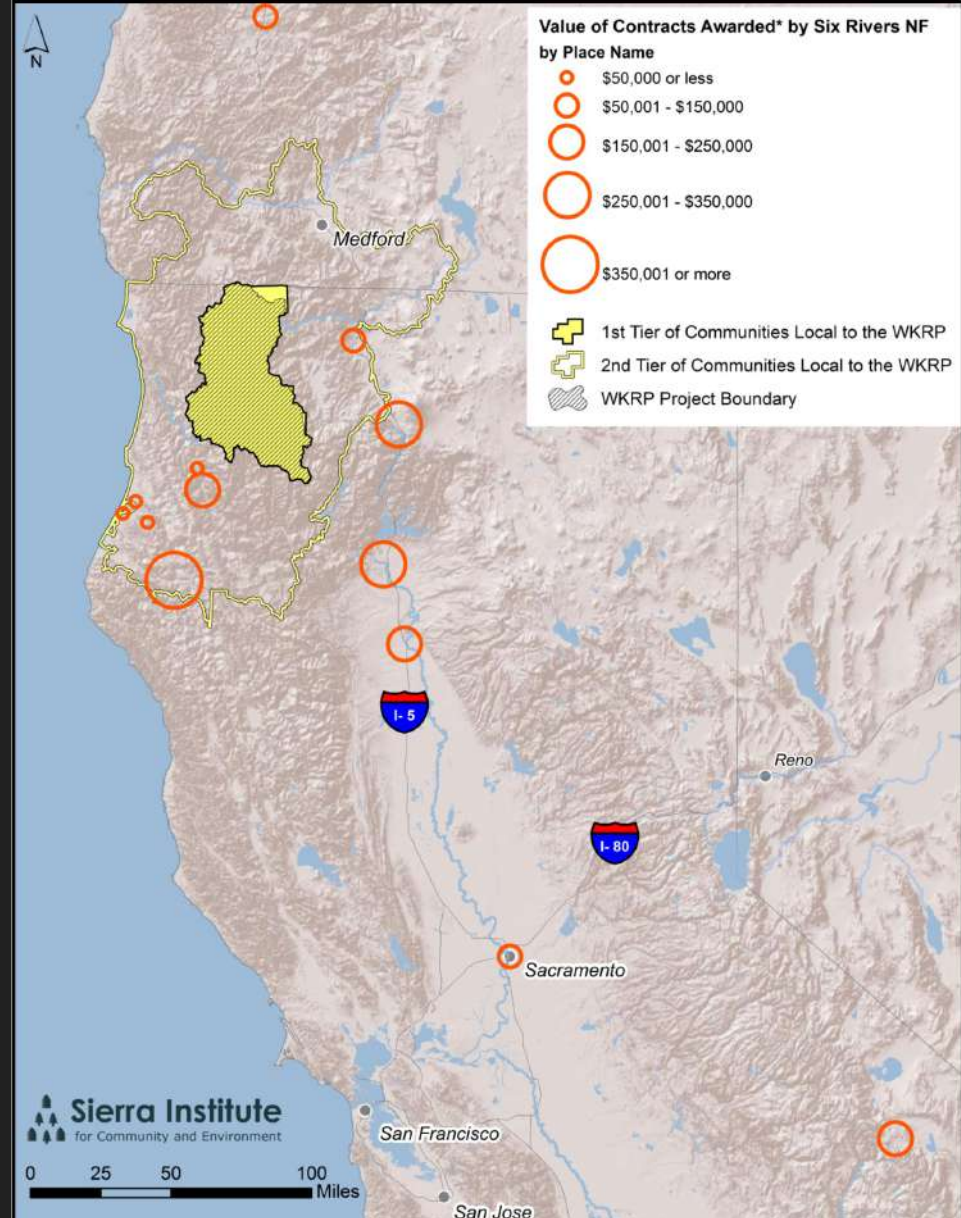


**Map 16: Frequency of Contracts Awarded\* by the Six Rivers National Forest relative to the WKR**



\*USFS Contract Data from 2010-2014 was refined by the process documented in *Appendix B: Processes of refining USFS Contract Data*. Contract data shown above only include that refined data.

**Map 17: Value of Contracts Awarded\* by the Six Rivers National Forest relative to the WKR**



\*USFS Contract Data from 2010-2014 was refined by the process documented in *Appendix B: Processes of refining USFS Contract Data*. Contract data shown above only include that refined data.