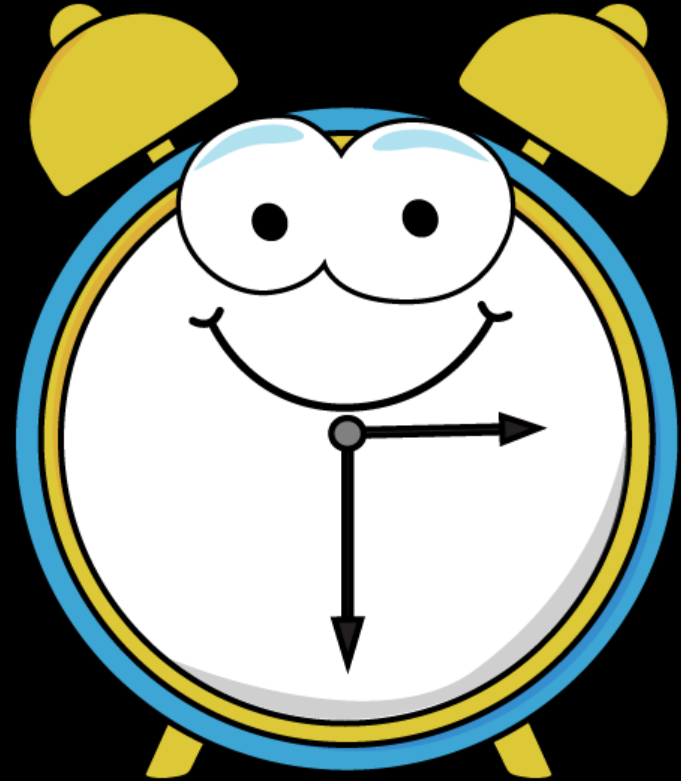


**Time**



# Same?

# Different?



# Same?

# Different?



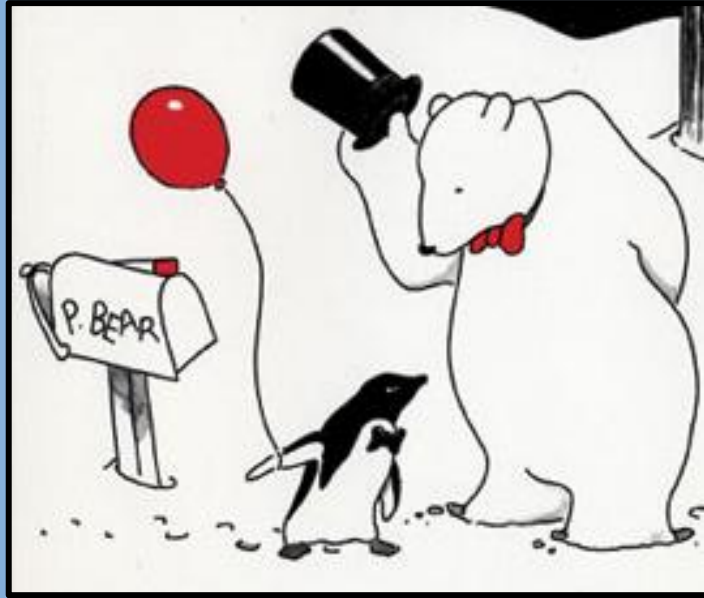
# TASK



# Let's Read!



# LET'S THINK!

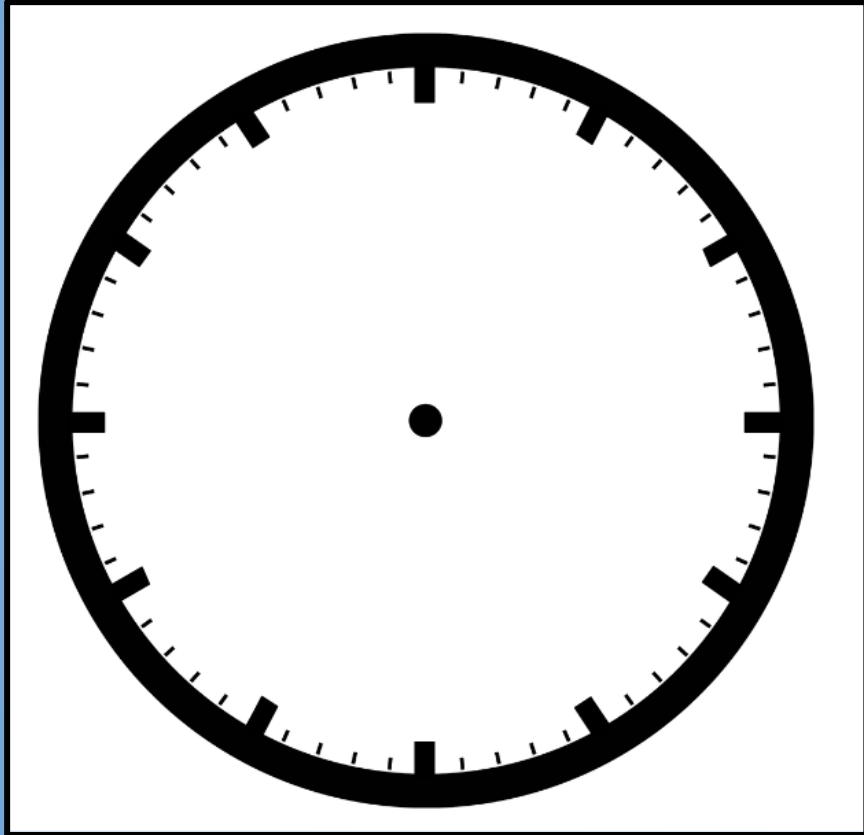


How many guests came to P.Bear's New Years Eve Party?

# TASK



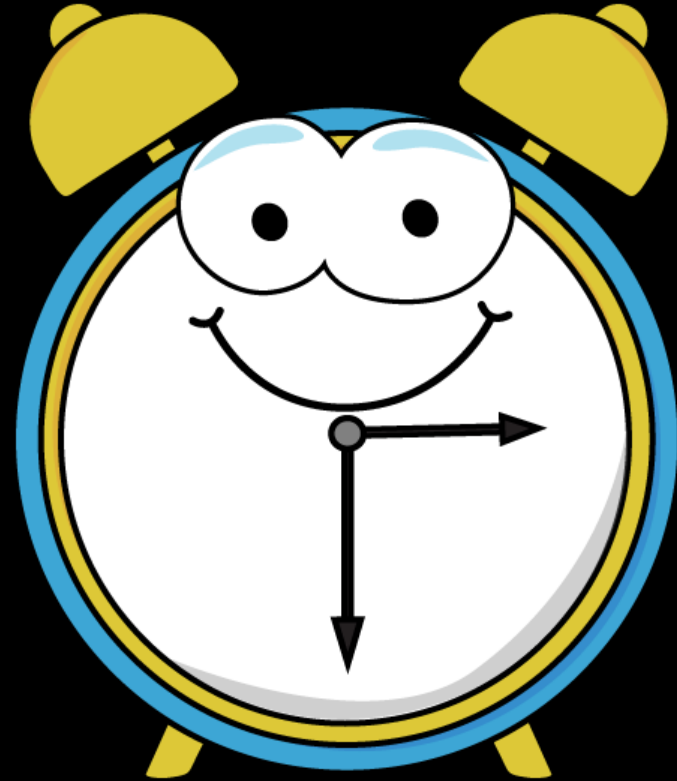
# LET'S THINK!



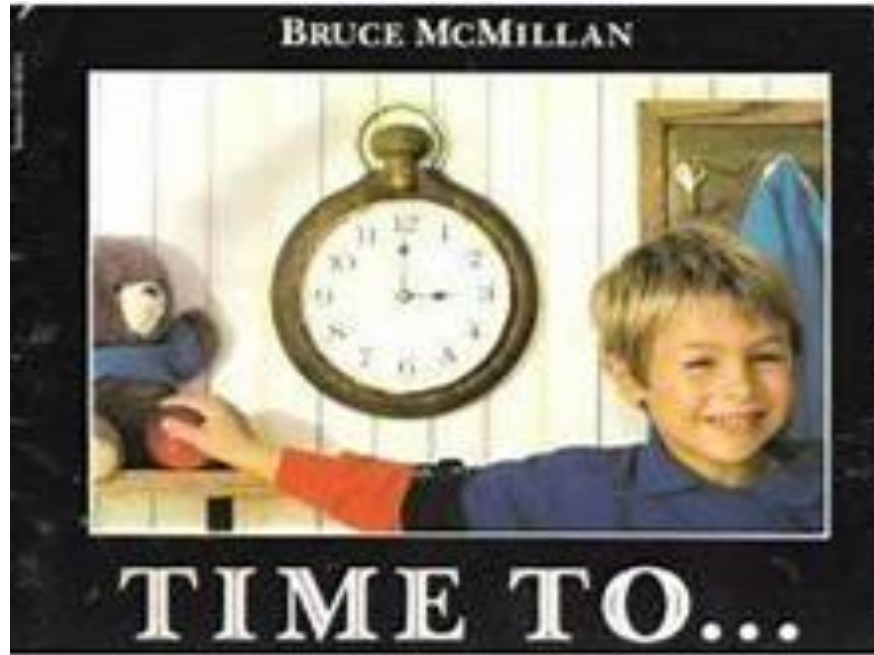
Work with your partner to fill in the hour number on your clock.



**PRACTICE  
TOGETHER**



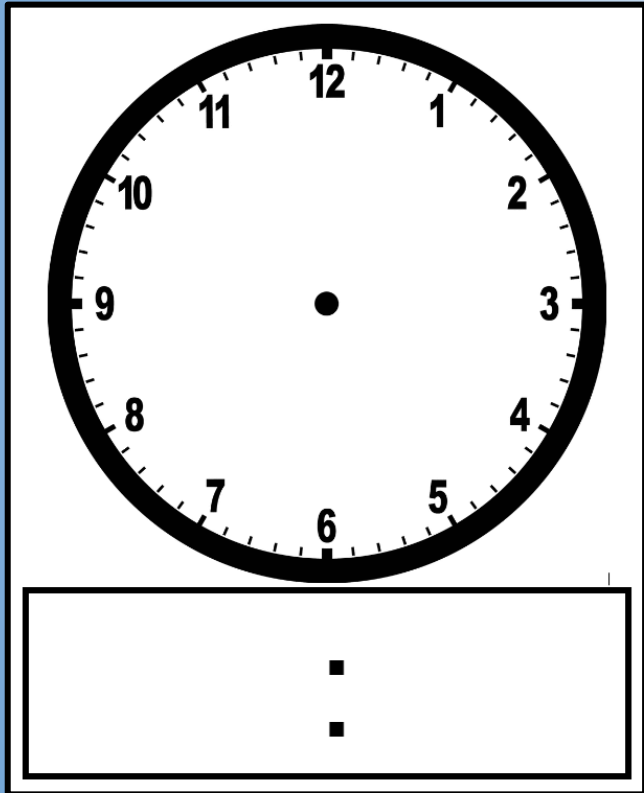
# Change that clock as we read!



# TASK



# LET'S THINK!



The party started some time **after** 1:00 PM.

It was over **before** 9:00 PM.

The party lasted 2 hours.

**WHAT  
TIME  
WAS  
THE  
PARTY?**



**MOST WANTED**

**MOST WANTED**

**MOST WANTED**

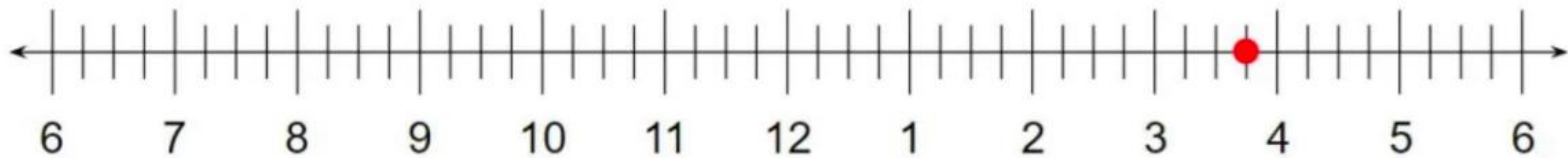
**AVERY'S 11!**

**BUT BEFORE WE CELEBRATE, WE  
NEED HELP CATCHING THIS  
JEWEL THIEF!**

**WILL YOU HELP US CRACK THE CASE BEFORE  
WE CUT THE CAKE?**

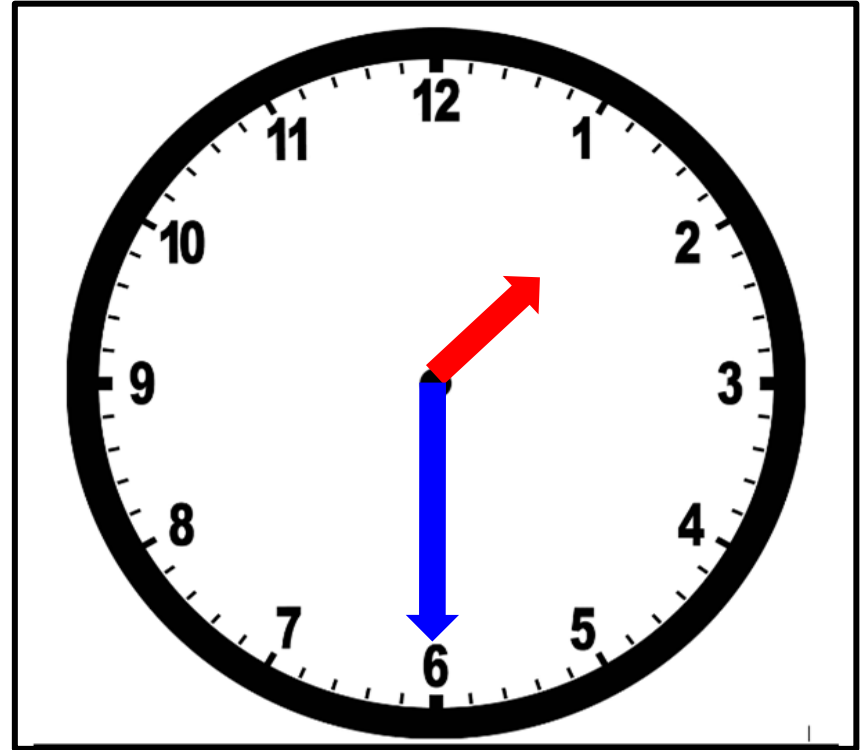
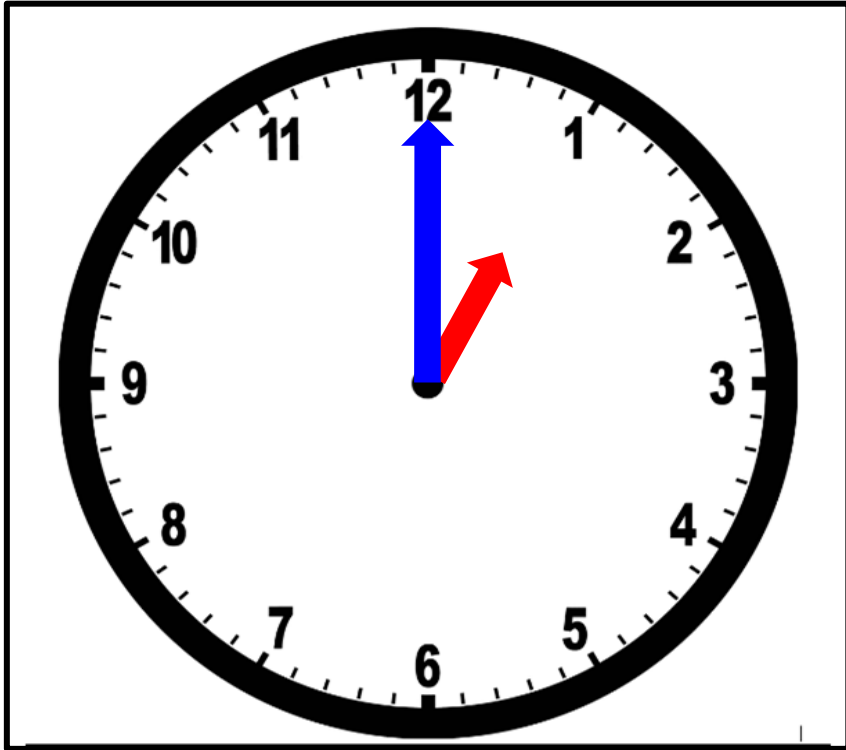
**SATURDAY, JANUARY 20TH  
2PM**

# Same? Different?

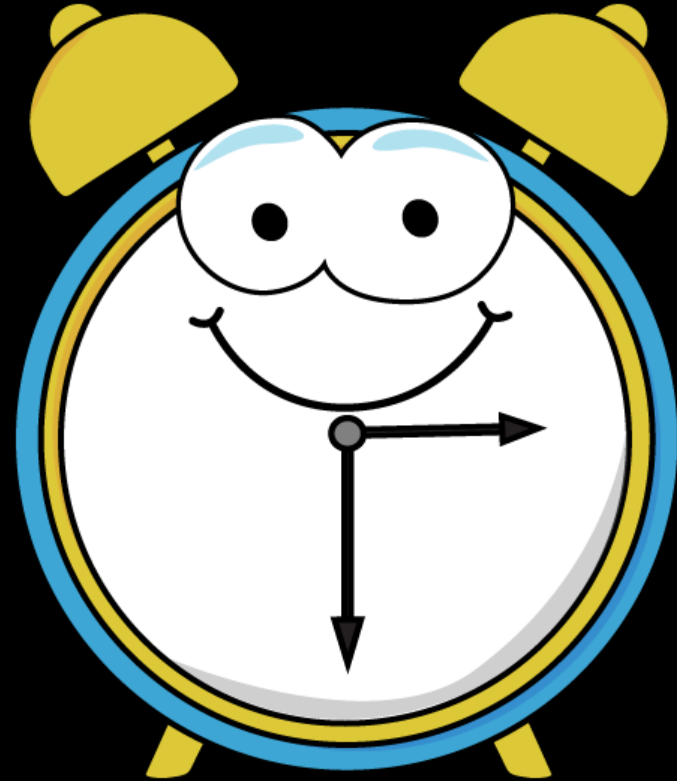


# Same?

# Different?



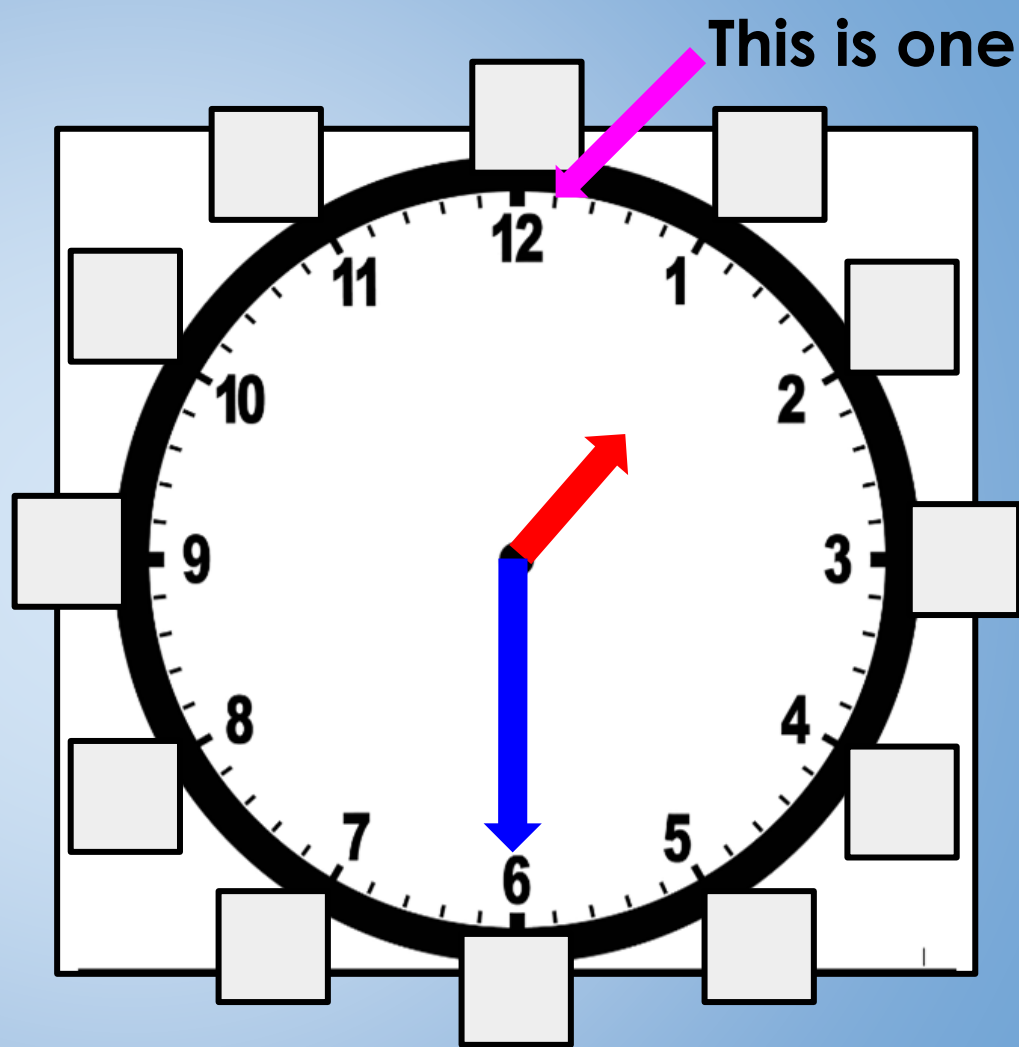
# TASK



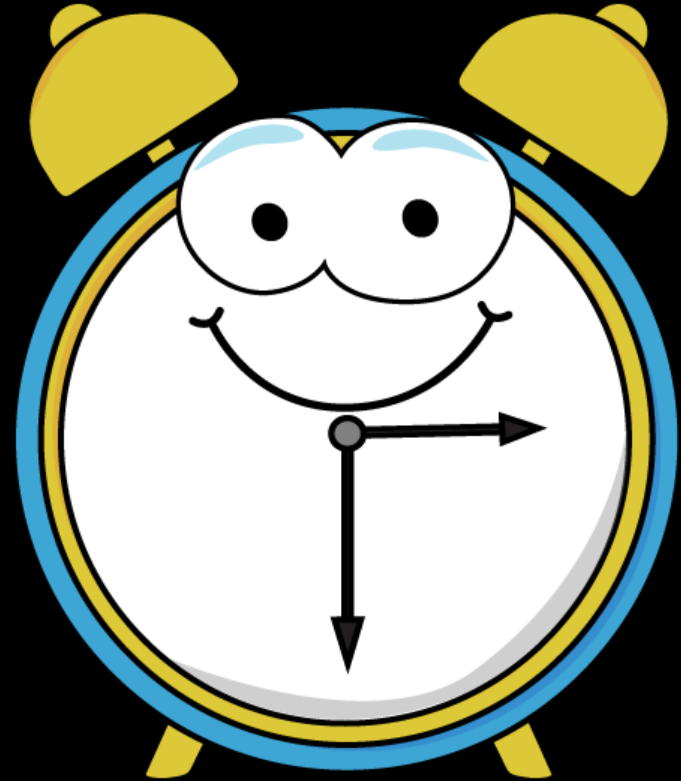


**LET'S THINK!**

How many  
lines are  
there on this  
clock?



**PRACTICE  
TOGETHER**



# MRS. SMITH'S MORNING ROUTINE

**CLOCK 1**

**CLOCK 2**

**CLOCK 3**

**CLOCK 4**

**CLOCK 5**

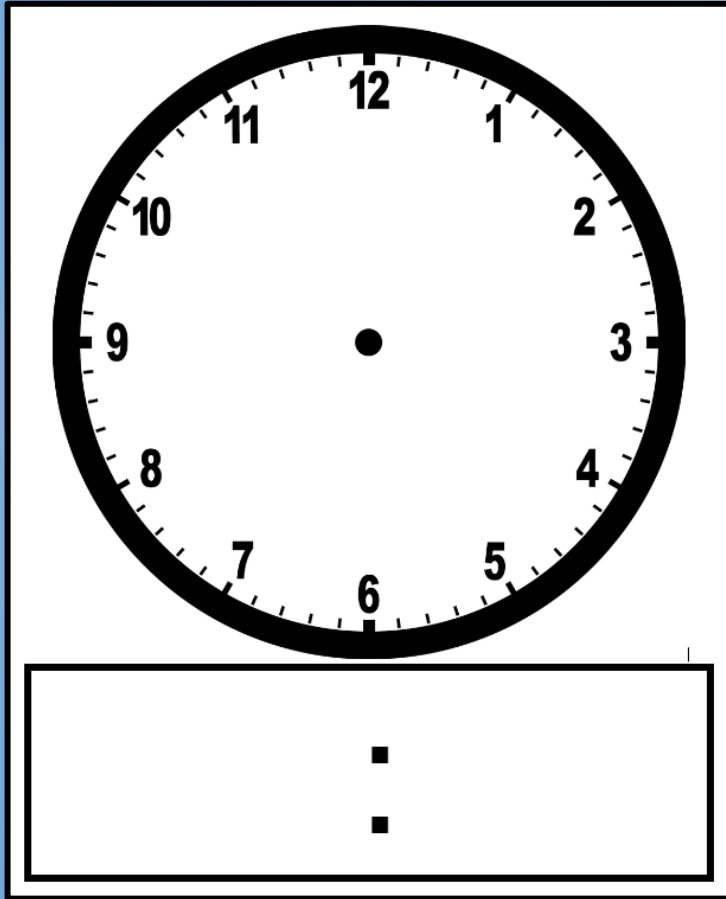
**CLOCK 6**



# TASK



# LET'S THINK!



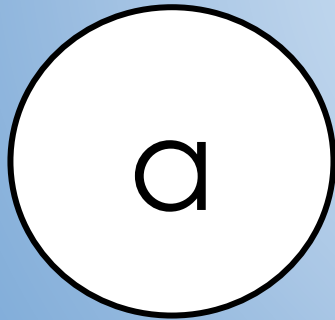
Tell your partner something you do during the day at **half past**.

# TASK



# LET'S THINK!

Write the **digital** time that is on each **analog** clock.

A rectangular box with a double black border, intended for writing the digital time. Inside the box, a colon ':' is centered vertically, indicating the minutes and seconds positions.