

Safety in the Science Laboratory

Wilkes-Barre Area School District
Science Department

General Laboratory Safety Rules

- Learning and following safety rules in the science laboratory helps keep you and your classmates safe.
- Only when every student in the lab is obeying the rules can everyone be safe.



The Three Most Important Rules:

■ **PERMISSION:**

Do not enter the science laboratory with out permission.

■ **SUPERVISION:**

Never do any work in the laboratory when the teacher is not present.

■ **PREPARATION:**

It is your responsibility to read ALL handouts before beginning a laboratory activity.

Additional Rules:

- **Tie back long hair and avoid loose clothing and sleeves.**

This should always be done when working with an open flame!



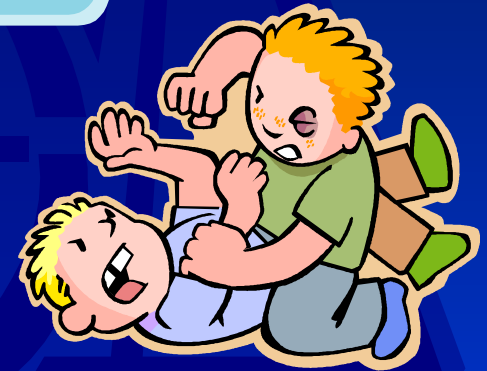
- **Safety goggles and laboratory aprons should be worn when indicated in the laboratory manual.**

Safety goggles and lab aprons MUST ALWAYS be worn when working with chemicals or an open flame!



■ **There should be no eating, drinking or physical play in the laboratory.**

Food and drink can become contaminated. Fooling around can be dangerous in the lab!



■ **Your work area should always be kept uncluttered.**

There is a much greater chance of an accident with a messy work area!



■ **For vision correction, you are advised to wear glasses rather than contact lenses.**

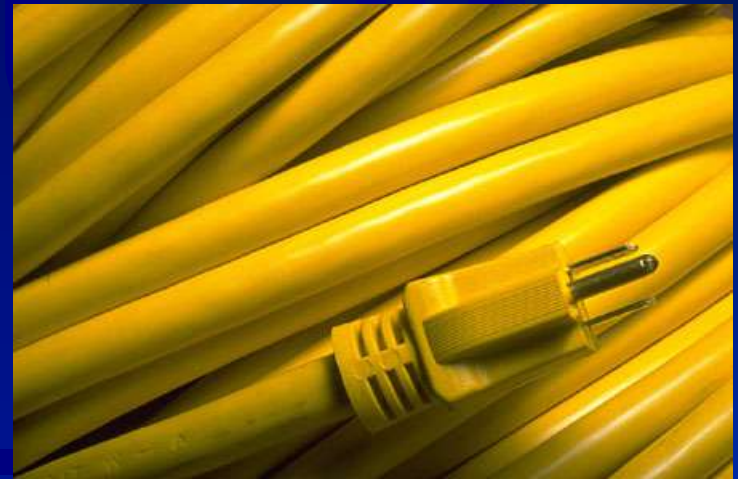
Contacts can serve as wicks to absorb vapors and liquids.



■ **Electrical cords should not be placed across walkways.**

Keep work areas dry when working with electricity!

At the end of the lab, all electrical equipment should be unplugged!



■ **Separate broken glass from paper waste.**

Broken glass should be placed in a separate container to prevent cuts!



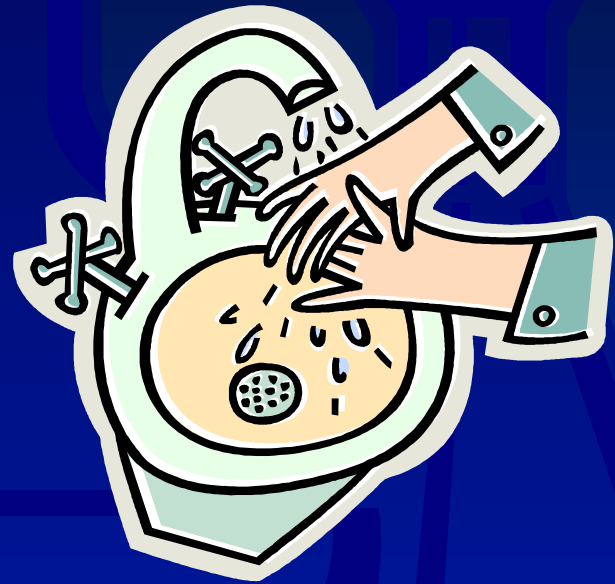
■ **Make sure all materials are properly stored.**

Make sure you leave your lab station in a clean condition!



■ **Wash your hands before and after laboratory work.**

Always wash your hands after a spill!



Safety Features in the Lab

- Your laboratory should have various safety features.
- You should be able to locate and use the safety equipment in your laboratory.



Fire Safety

- Identify the location of the following fire safety equipment in your laboratory.



**fire
extinguisher**

fire blanket



**marked exit
signs**



Eyewash Station

- Your laboratory should be equipped with an eyewash station.
- If an eyewash station is not available, use a water faucet to flush the eye.
- Do not flush toward your other eye.
- Flush the eye for at least 5 minutes.



Drench Shower

- A drench shower is used to flush away chemicals spilled on clothing.
- Drench showers should be tested monthly for proper operation.



Fume Hoods

- Many laboratories contain fume hoods.
- Fume hoods are specially ventilated stations used when experiments produce noxious or harmful vapors.
- See if your laboratory has fume hoods.



First Aid Kit

- Find the location of your laboratory's first aid kit.
- Make sure the kit is properly stocked.



Emergency Numbers

- List emergency numbers near the laboratory phone.



üFire

üAmbulance

üPoison Control

ü911

Safety Begins With You!!

- It is your responsibility to know and follow the rules of the laboratory.
- Be aware of the safety features of your lab.
- Doing these things will result in enjoyable and safe laboratory experience.



GOOD LUCK!

Be Safe

Learn

Have Fun