

**GETTING
STARTED
WITH**

**COLLEGE
NOW**

A CAREER AND COLLEGE
PROMISE PROGRAM

THIS PRESENTATION MAY NOT CONTAIN ALL DETAILS OF THE PROGRAM.
PLEASE VISIT WWW.GASTON.EDU/COLLEGE-NOW/ FOR MORE INFORMATION.

What is College Now?



**Dual
Enrollment
Program!**



**Tuition-Free
College
Credits!**



**An
Opportunity
to Accelerate
your future!**

College Now

Eligibility Requirements

To participate in the College Now Program students must

Be a junior or senior AND

Have an unweighted GPA of 2.8 or higher OR

Demonstrate college readiness on approved assessment

If you do not have a 2.8 unweighted GPA there are multiple pathways that you may be eligible for – talk to your high school counselor for more information.

Are you interested in the College Now Program?

Just follow these steps and you'll be on your way!

STEP 1

Inform your high school counselor that you are interested in taking College Now courses (in person, or by email!)

STEP 2

Decide on your pathway(s). There are 2 kinds of pathways:

College Transfer Pathways

Career Technical Education (CTE) Pathways

Don't worry, you don't have to choose just one! Let's keep going to find out more about the pathways...

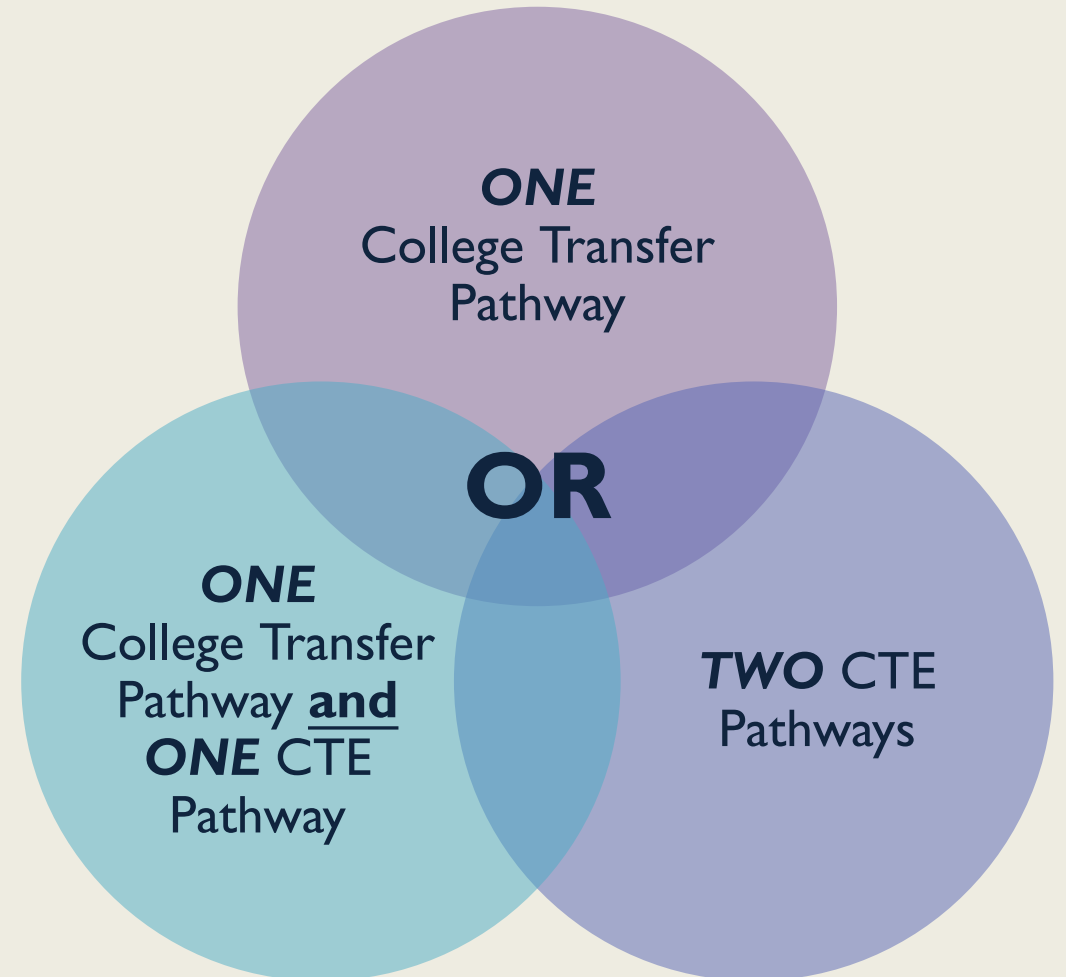
College Now Pathway Options

College Transfer Pathways

are designed for students who plan to pursue a bachelor's degree at a 4-year college or university.

Career and Technical Education (CTE) Pathways

lead to a certificate, diploma, degree or entry level job skills.



College Transfer (CT) Pathways



Associate in Arts (AA) Pathway Requirements

- ENG 111 and ENG 112
- 3 Humanities Courses
- 3 Social and Behavioral Science Courses
- 1 Math Course
- 1 Natural Science Course
- ACA 122



Associate in Science (AS) Pathway Requirements

- ENG 111 and ENG 112
- 2 Humanities Courses
- 2 Social and Behavioral Science Courses
- 2 Math Courses
- 2 Natural Science Courses
- ACA 122

- Courses in these pathways are general education courses needed for 4-year degree programs
- 2.8 unweighted GPA required for enrollment
- Students may choose either the Associate in Arts or Associate in Science pathway
- These pathways offer 32-43 semester hours of college credit (approximately half of an Associate degree)
- Courses in these pathways are transferable to any school in the UNC system (with an earned grade of C or better)
- Courses in these pathways receive the same weight as Advanced Placement (AP) courses
- Students have the option to also enroll in one CTE pathway while in one College Transfer pathway

Career & Technical Education (CTE) Pathways

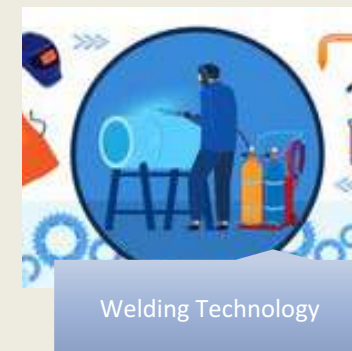
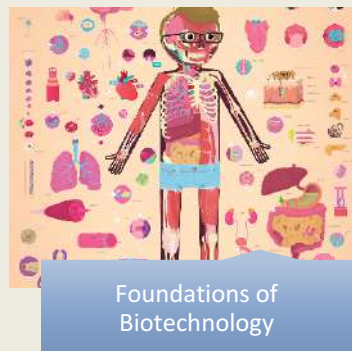
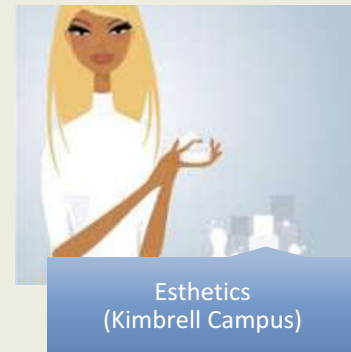
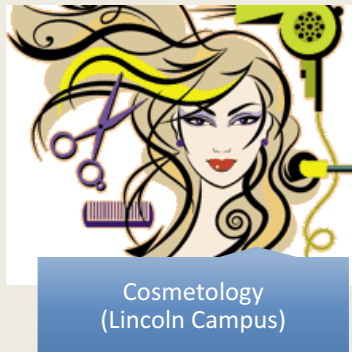
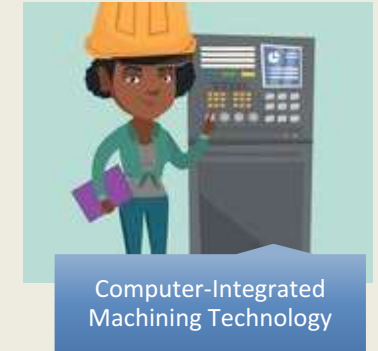
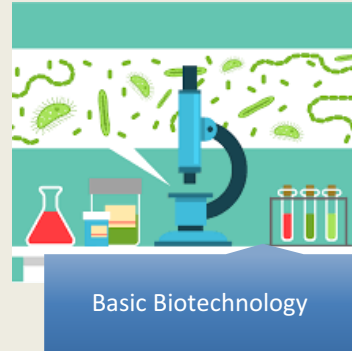


- Lead to a certificate, diploma, degree, or entry-level job skills
- Many CTE pathway courses meet in person on a Gaston College campus
- 17 CTE pathways, most with 4-5 courses
- Courses in each pathway relate directly to that field of study
- Students may enroll in 2 CTE pathways, or in one CTE and one College Transfer pathway
- Must have 2.8 unweighted GPA to enroll (*if you don't have a 2.8 GPA, there are multiple pathways that you may be eligible for – talk to your high school counselor for more information*)

There are 17 CTE pathways!

To take a closer look at each one, go to the [College Now Handbook](#)

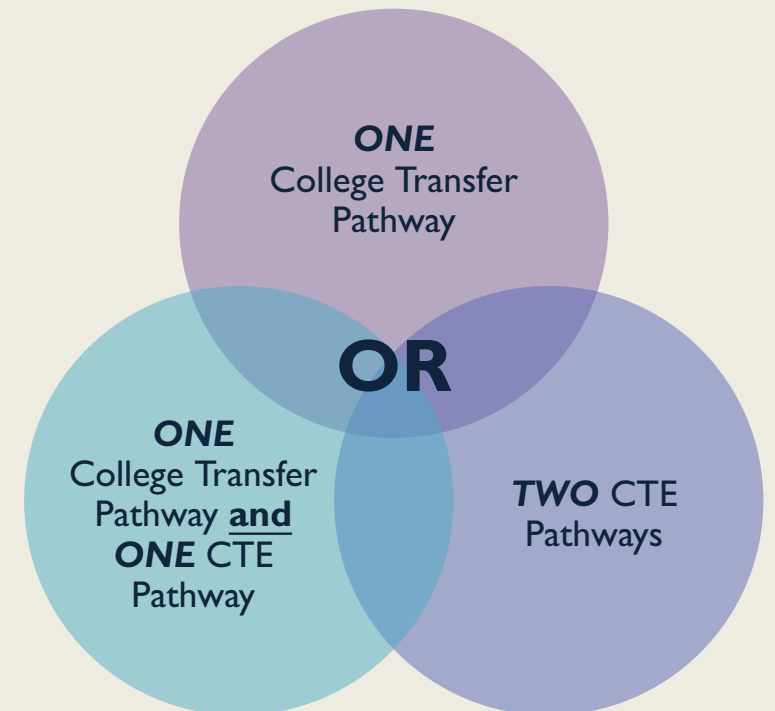
Remember, many CTE courses meet in person on a Gaston College campus!



CHEAT SHEET!

- If you plan to get a **4-year degree** at any time, you should enroll in one of the College Transfer Pathways.
- If you are planning to go into a **healthcare field** (including nursing, physical or occupational therapy, paramedic, dental, pharmacy, nutrition), you should enroll in the Associate of Arts and the Foundations of Biotechnology pathways (veterinary only needs the Assoc. of Arts pathway).
- Plan to be a mechanic/hairdresser/electrician and **own your own** garage/salon/company? Enroll in the CTE pathway for your career choice, and the Business Administration pathway, too.
- If you intend to enroll in **Cosmetology or Esthetics**, you do not have to choose courses. Everyone in these pathways takes the same courses in the same order

Remember, you can enroll in...



Now that you've decided on your pathway(s), it's time for

STEP 3

Enroll as a College Now Student at Gaston

1. Go to www.cfnc.org/gastonapp
2. If you have an account, click **Log In**.
3. If you don't have an account, click **Create an Account**. Complete the form. For **Role**, select **high school student**. Click **Register**. Keep your username and password for future reference.
4. From the CFNC homepage, click on **Apply to College**, then **Start an Application**. Select **Gaston College**, then **Undergraduate Application** from the drop down box. Click **Apply**.
5. Read the **Application Instructions** on the **A Message from the Campus** tab.
6. Click on each tab on the left and fill in all required fields. Pay special attention to the following:
 - Name and Address tab: be sure to list high school email address
 - Enrollment Information tab: Enrollment Term is the term you will begin taking College Now courses (ex: Spring 2021)
 - Career and College Promise Pathways: click one or both, depending on what you decided
 - CTE Program of Study: if you chose a CTE pathway, select it from the drop down box (it will only allow you to enter one)
 - On the Educational Information tab, select current high school attending.
 - Once all tabs are complete and have a checkmark, click **Submit Your Application**

Now that you've enrolled as a College Now student, it's time for

STEP 4

Decide which classes you want to take.

Find the pathway(s) you've chosen in the [College Now Handbook](#)

If you decided on a College Transfer pathway, look at the course options. These pathways have a limit on how many courses you can take in each area.

Select three courses from the following from two different disciplines

ART 111	Art Appreciation
ART 114	Art History Survey I
ART 115	Art History Survey II
COM 231	Public Speaking
ENG 231**	American Literature I

- A pre-requisite is a course that must be taken before another course. These are denoted by * or **
- If you want to know more about a course, look it up in our [catalog](#).

Associate in Arts (P1012C)		
<i>The following two English courses are required (6 SHC):</i>		
ENG 111	Writing and Inquiry	3 SHC
ENG 112*	Writing/Research in the Disciplines	3 SHC
<i>Select three courses from the following from two different disciplines (9 SHC):</i>		
ART 111	Art Appreciation	3 SHC
ART 114	Art History Survey I	3 SHC
ART 115	Art History Survey II	3 SHC
COM 231	Public Speaking	3 SHC
ENG 231**	American Literature I	3 SHC
ENG 232**	American Literature II	3 SHC
ENG 241**	British Literature I	3 SHC
ENG 242**	British Literature II	3 SHC
MUS 110	Music Appreciation	3 SHC
MUS 112	Introduction to Jazz	3 SHC
PHI 215*	Philosophical Issues	3 SHC
PHI 240*	Introduction to Ethics	3 SHC
<i>Select three courses from the following from two different disciplines (9 SHC):</i>		
ECO 251	Principles of Microeconomics	3 SHC
ECO 252	Principles of Macroeconomics	3 SHC
HIS 111	World Civilizations I	3 SHC
HIS 112	World Civilizations II	3 SHC
HIS 131	American History I	3 SHC
HIS 132	American History II	3 SHC
POL 120	American Government	3 SHC
PSY 150	General Psychology	3 SHC
SOC 210	Introduction to Sociology	3 SHC
<i>Select one course from the following (3-4 SHC):</i>		
MAT 143	Quantitative Literacy	3 SHC
MAT 152	Statistical Methods I	4 SHC
MAT 171	Precalculus Algebra	4 SHC
<i>Select one course from the following (4 SHC):</i>		
BIO 110	Principles of Biology	4 SHC
BIO 111	General Biology I	4 SHC
CHM 151	General Chemistry I (pre. req. MAT171 and HS CHM with Lab)	4 SHC
GEL 111	Introductory Geology	4 SHC
PHY 110	Conceptual Physics AND	3 SHC
PHY 110A	Conceptual Physics Lab	1 SHC
<i>Other required hours (1 SHC):</i>		
ACA 122	College Transfer Success	1 SHC
<i>Optional general education hours:</i> A student may take up to 8 semester hours of credit of foreign language courses and accompanying labs, in a single language, designated as General Education in the CAA as a part of this pathway. These courses are not part of the UGETC. Students who complete these courses with a "C" or better will receive transfer credit. The receiving university will determine whether these courses will count as general education, pre-major, or elective credit.		

TOTAL SHC: 32-41

*Course Pre-requisite: ENG 111
 **Course Pre-requisite: ENG 112

If you chose one or more CTE pathways, decide which courses you would like to take from your pathway list.

For example, Forensic Science has 5 course options:

Forensic Science (C5518CP)		
CJC 115	Crime Scene Photography	3 SHC
CJC 144	Crime Scene Processing	3 SHC
CJC 146	Trace Evidence	3 SHC
CJC 222	Criminalistics	3 SHC
CJC 245	Friction Ridge Analysis	3 SHC

- A pre-req. is a course that must be taken before another course.
- Cosmetology and Esthetics students do not choose courses.
- CTE courses followed by a T or T* carry AP weight, and will transfer to UNC system schools with a grade of C or higher.

Criminal Justice (C55180P)		
CJC 111	Introduction to Criminal Justice (T)	3 SHC
CJC 121	Law Enforcement Operations (T)	3 SHC
CJC 141	Corrections (T)	3 SHC
CJC 212	Ethics and Community Relations	3 SHC

TOTAL Semester Hours of Credit: 12

Electrical Systems Technology (C35130P)		
ELC 112	DC/AC Electricity	5 SHC
ELC 113	Residential Wiring	4 SHC
ELC 128	Introduction to PLC	3 SHC
ELN 231	Industrial Controls	3 SHC

TOTAL Semester Hours of Credit: 15

Esthetics (C55230P) – Kimbrell Campus		
<i>Fall One</i>		
COS 119	Esthetics Concepts	2 SHC
COS 120	Esthetics Salon I	6 SHC
<i>Spring One</i>		
COS 125	Esthetics Concepts II	2 SHC
COS 126	Esthetics Salon II	6 SHC

TOTAL Semester Hours of Credit: 16

- * The Esthetics program is only offered on the Kimbrell Campus located in Belmont.
- * A separate application and consent form are required to enroll in the Esthetics Pathway.
- * Students must begin Esthetics program in the fall semester.

See page 11 for a list of estimated additional costs that apply to this program.

Fire Protection Technology (C55240P)		
FIP 120	Introduction to Fire Protection	3 SHC
FIP 124	Fire Prevention and Public Education	3 SHC
FIP 132	Building Construction	3 SHC
FIP 146	Fire Protection Systems	4 SHC

TOTAL Semester Hours of Credit: 13

Forensic Science (C5518CP)		
CJC 115	Crime Scene Photography	3 SHC
CJC 144	Crime Scene Processing	3 SHC
CJC 146	Trace Evidence	3 SHC
CJC 222	Criminalistics	3 SHC
CJC 245	Friction Ridge Analysis	3 SHC

TOTAL Semester Hours of Credit: 15

Foundations of Biotechnology (C20100BP)		
BIO 168	Anatomy and Physiology I (T)	4 SHC
BIO 169	Anatomy and Physiology II (T) (pre-req. BIO 168)	4 SHC
ENG 111	Writing and Inquiry (T*)	3 SHC
SOC 210	Introduction to Sociology (T*)	3 SHC

TOTAL Semester Hours of Credit: 14

And now for the final step!

Inform your school counselor of which pathway(s) you chose, and which courses you want to take.

- Make sure you tell your counselor whether you want online or face-to-face for each course you chose.
- If you want face-to-face courses, your counselor will make certain these will work in your schedule. If you only want to take face-to-face courses after school, be sure to tell your counselor this, also.

Here is an example of the email you need to send your counselor now:

Mr. Smith,
I have completed my Gaston College application, and have decided which pathways and courses I would like.
I want to enroll in the Associate of Arts and Criminal Justice pathways.
I would like to take ART111 online, and CJC111 in person.
Thank you,
Susie Que

Now, just watch for emails from your counselor, Gaston College, or DocuSign, containing further instructions.

That's it!

