

**MISSOULA SCHOOL ZONE
SPEED LIMITS**

**PUBLIC WORKS COMMITTEE
NOVEMBER, 9, 2011**

School District 1 Elementary Schools Elementary School Boundaries:

This map displays school attendance boundaries for students in and around the greater Missoula area for Missoula County Public Schools, Elementary School District 1. Every effort has been made to clearly identify which school a student should attend. Additional questions should be directed to the District Office at (406) 728-2400.

There are nine elementary schools in School District 1 that serve K-5 students. The attendance area for each elementary school is in its own color. The school buildings and names are in black, as shown below:

■ School Building

Chief Charlo	542-4005
Cold Springs	542-4010
Franklin	542-4020
Hawthorne	542-4025
Lewis and Clark	542-4035
Lowell	542-4040
Paxson	542-4055
Rattlesnake	542-4050
Russell	542-4080

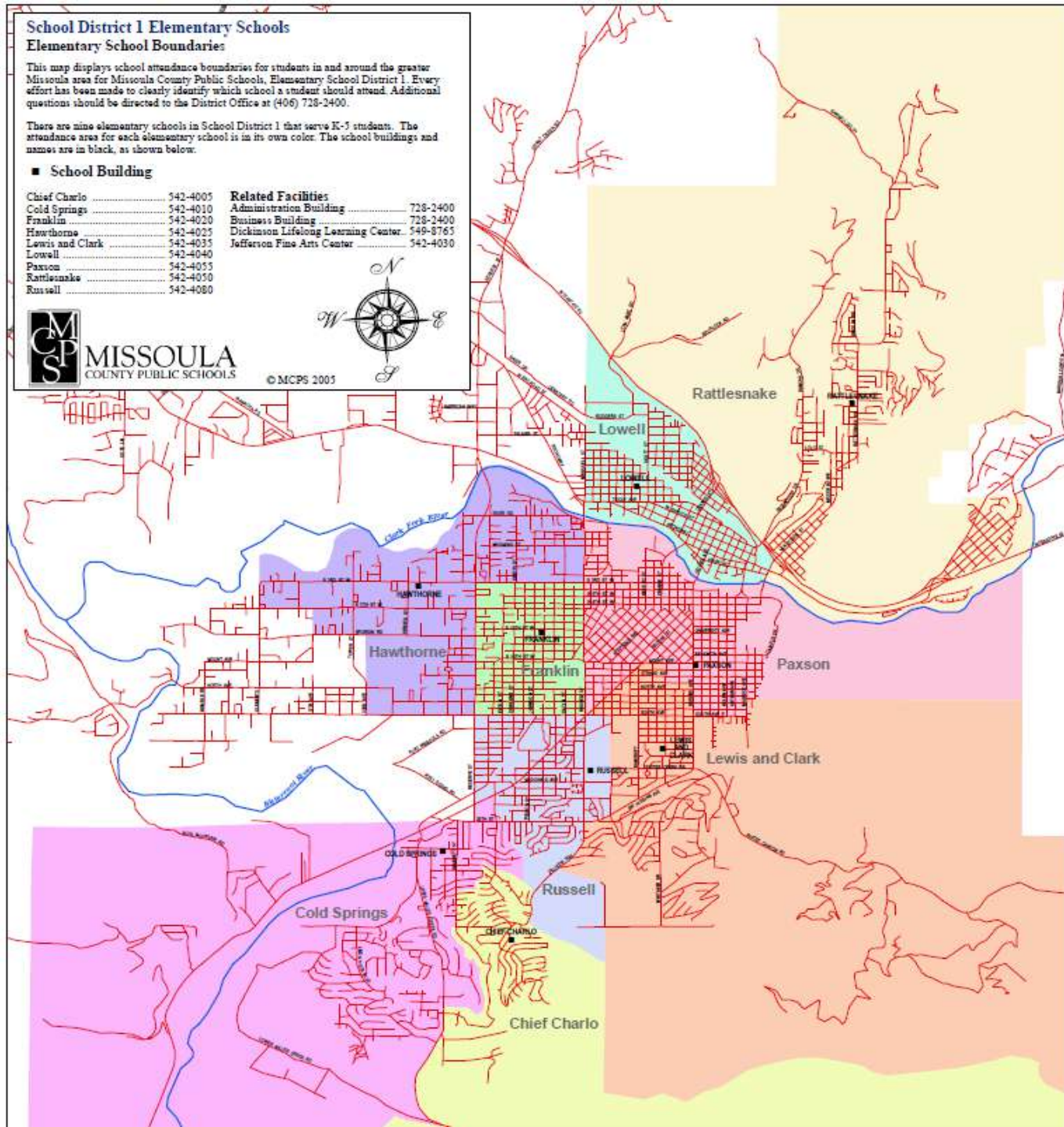
Related Facilities

Administration Building	728-2400
Business Building	728-2400
Dickinson Lifelong Learning Center	549-8765
Jefferson Fine Arts Center	542-4030



MISSOULA
COUNTY PUBLIC SCHOOLS

© MCPS 2005



SAFE SCHOOL ACCESS INVOLVES EDUCATION, ENGINEERING & ENFORCEMENT

Children's safety is improved when parents, school staff, Public Works, and Police work together on all facets of travel;

School access route plans concentrate students on the safest walking routes;

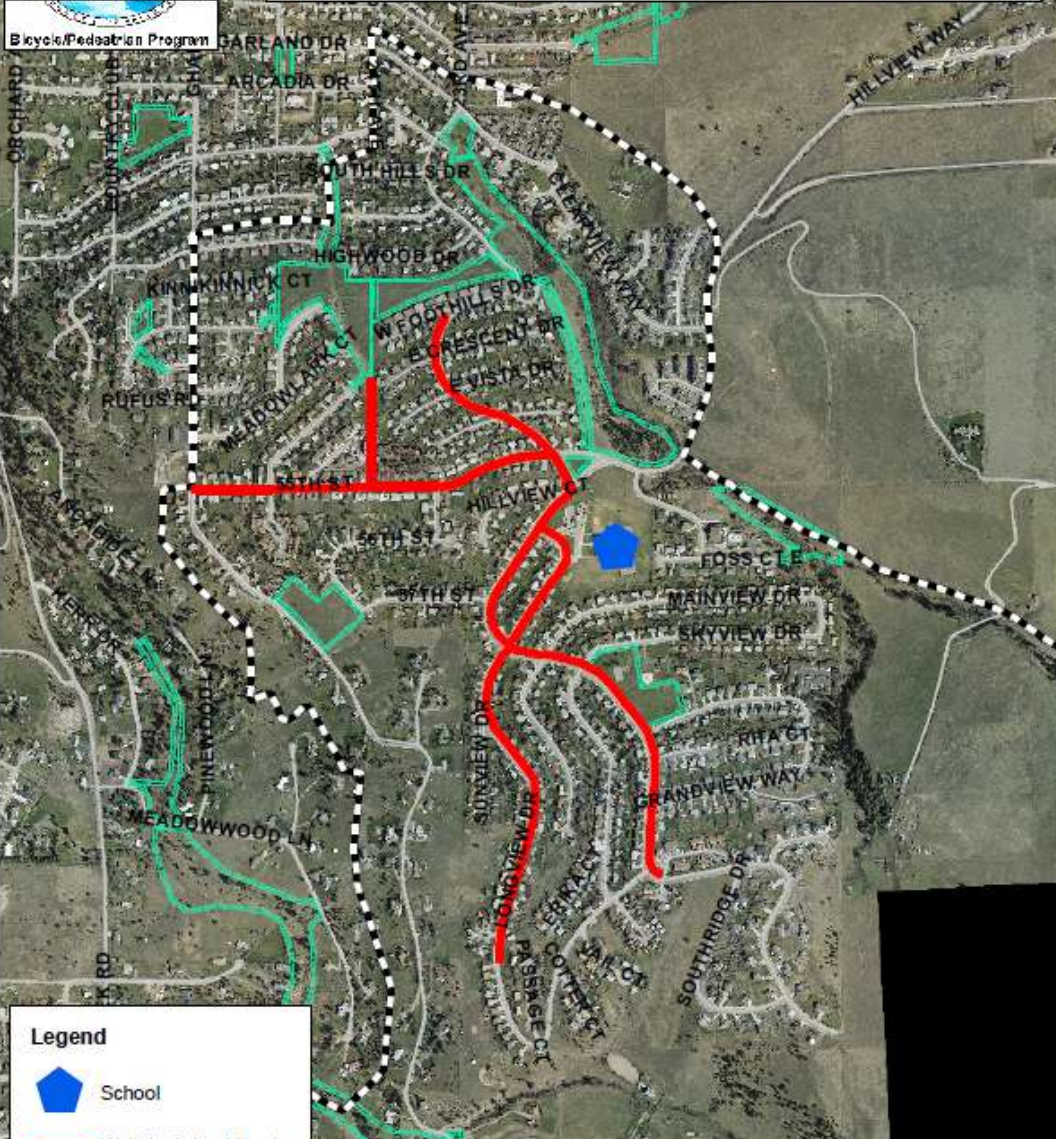
6 of our 10 Missoula Public Elementary Schools have designated Safe Routes to School





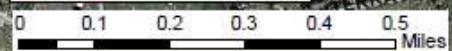
Public Works
MISSOULA
 Bicycle/Pedestrian Program

CHIEF CHARLO WALK-TO-SCHOOL ROUTES

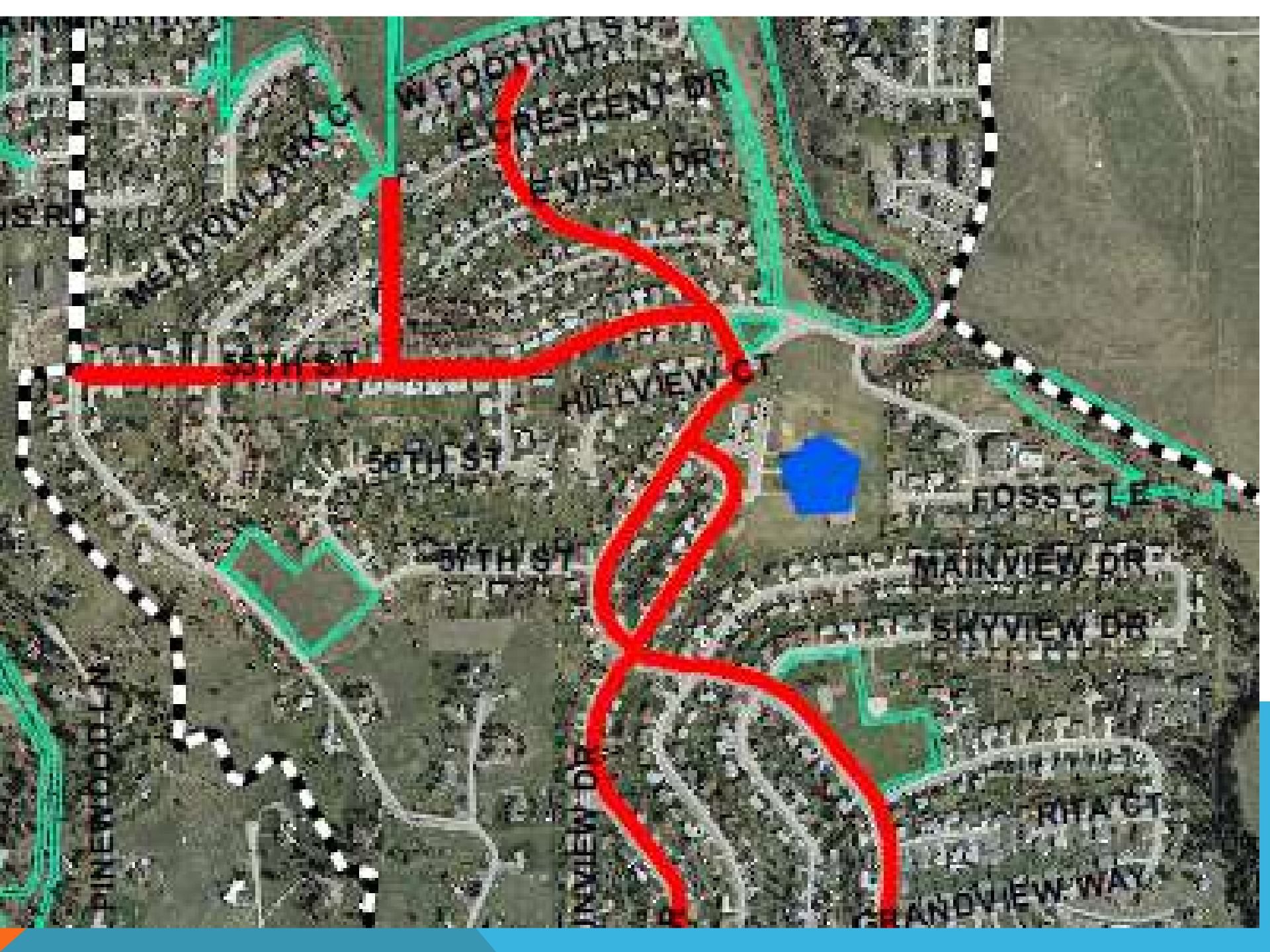


Legend

-  School
-  Walk to School Route
-  Attendance Boundary
-  Public Park



For more information contact the City of Missoula's Bicycle Pedestrian Office in City Hall at 435 Ryman, phone 406-552-6352.
 Disclaimer: By publishing this map, neither the Montana Department of Transportation, nor the Federal Highway Administration, nor the City of Missoula warrants expressly or by implication the conditions that may be encountered. The person using this map assumes the risks encountered and is advised to use good judgment and obey all traffic laws on all routes, regardless of their designation on this map.



MEADOWLARK CT
55TH ST

WFOOTHILLS DR
EUPHRESCENT DR
E VISTA DR

HILLVIEW CT
56TH ST
57TH ST

FOSS CT
MAINVIEW DR

PINEWOOD LN

UNVIEW DR

SKYVIEW DR
TRIA CT
GRANDVIEW WAY

EDUCATION, ENGINEERING & ENFORCEMENT

Hazard identification and physical improvements along Safe Routes to School is ongoing;

- Parent Drop Off Areas – Circulation hazards;
- Sidewalks- continuous with ramps at corners;
- Roadway Geometry – narrow crossings distances;
- Traffic Control – signs and markings are clear;
- School Fencing – strategically placed gates;
- Speed Zones – context sensitive around schools.

EXISTING SPEED LIMITS AROUND SCHOOLS

School	Primary Frontage	Existing Speed Limit	School Speed Zone	Secondary Frontage	Existing Speed Limit
Headstart	Worden	25	No	Howell/Phillips	25
Chief Charlo Elementary	Hillview/Longview	25/25	No	Not Applicable (NA)	NA
Cold Springs Elementary	Briggs	25	No	NA	NA
Franklin Elementary	Johnson	25	No	Grant/10th/11th	25
Hellgate Elementry	Flynn Lane	35	Yes/25	Siren's	25
Hawthorne Elementary	S. 3rd Street	35	Yes/25	Hiberta	25
Lewis & Clark Elementary	Park	25	No	Agnes/Benton	25
Lowell Elementary	Phillips Street	25	No	Scott/Sherwood/Shakespear	25
Paxson Elementary	Higgins	30	No	Evans/Gerald/Hastings	25
Rattlesnake Elementary	Rattlesnake Drive	30	No	Mountain View/Pineview	25
Russell Elementary	Russell	35	Yes/25	NA	NA
CS Porter Middle School	Reserve	45	Yes/30	North/S 26th/Central	25
Meadow Hill Middle School	S. Reserve	25	No	NA	NA
Washington Middle School	Bancroft	25	No	Central/Hollis/Sussex	25
Hellgate High School	Higgins	30 N Bound/25 S Bound	No	Connell/Gerald	25
Sentinel High School	South Ave	30	No	Bancroft	25
Willard Alternative	6th	25	No	Oak/Ash	25
Big Sky High School	South Ave	35	No	S 31st/ North/S 33rd	25
Emma Dickinson Learning	Curtis	25	No	Carol Ann	25

Userdata/Engineering/Documents/School Zone Speed Limits

7-Nov-11



EXISTING SPEED LIMITS AROUND SCHOOLS

School	Primary Frontage	Existing Speed Limit	School Speed Zone	Secondary Frontage	Existing Speed Limit
Headstart	Worden	25	No	Howell/Phillips	25
Chief Charlo Elementary	Hillview/Longview	25/25	No	Not Applicable (NA)	NA
Cold Springs Elementary	Briggs	25	No	NA	NA
Franklin Elementary	Johnson	25	No	Grant/10th/11th	25
Hellgate Elementry	Flynn Lane	35	Yes/25	Siren's	25
Hawthorne Elementary	S. 3rd Street	35	Yes/25	Hiberta	25
Lewis & Clark Elementary	Park	25	No	Agnes/Benton	25
Lowell Elementary	Phillips Street	25	No	Scott/Sherwood/Shakespear	25
Paxson Elementary	Higgins	30	No	Evans/Gerald/Hastings	25
Rattlesnake Elementary	Rattlesnake Drive	30	No	Mountain View/Pineview	25
Russell Elementary	Russell	35	Yes/25	NA	NA
CS Porter Middle School	Reserve	45	Yes/30	North/S 26th/Central	25
Meadow Hill Middle School	S. Reserve	25	No	NA	NA
Washington Middle School	Bancroft	25	No	Central/Hollis/Sussex	25
Hellgate High School	Higgins	30 N Bound/25 S Bound	No	Connell/Gerald	25
Sentinel High School	South Ave	30	No	Bancroft	25
Willard Alternative	6th	25	No	Oak/Ash	25
Big Sky High School	South Ave	35	No	S 31st/ North/S 33rd	25
Emma Dickinson Learning	Curtis	25	No	Carol Ann	25

Userdata/Engineering/Documents/School Zone Speed Limits

7-Nov-11

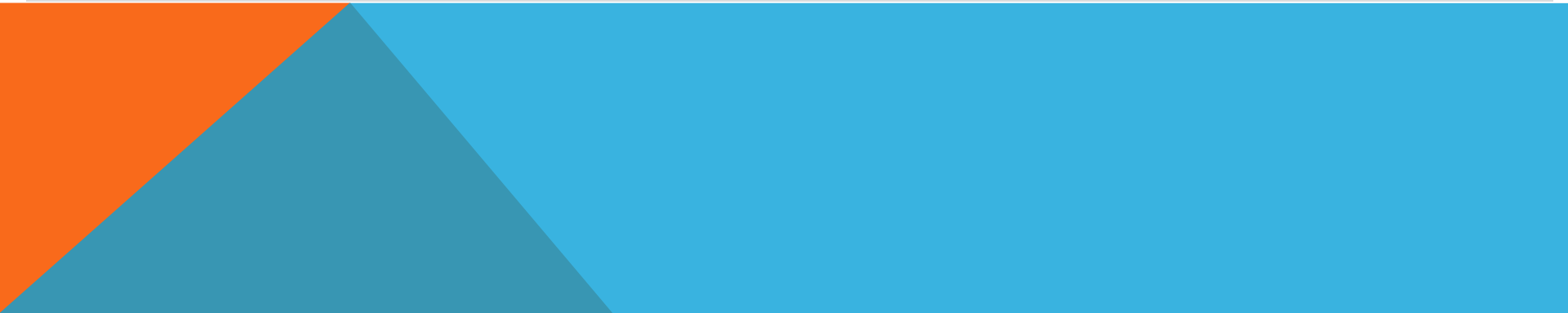


EXISTING SPEED LIMITS AROUND SCHOOLS

School	Primary Frontage	Existing Speed Limit	School Speed Zone	Secondary Frontage	Existing Speed Limit
Headstart	Worden	25	No	Howell/Phillips	25
Chief Charlo Elementary	Hillview/Longview	25/25	No	Not Applicable (NA)	NA
Cold Springs Elementary	Briggs	25	No	NA	NA
Franklin Elementary	Johnson	25	No	Grant/10th/11th	25
Hellgate Elementry	Flynn Lane	35	Yes/25	Siren's	25
Hawthorne Elementary	S. 3rd Street	35	Yes/25	Hiberta	25
Lewis & Clark Elementary	Park	25	No	Agnes/Benton	25
Lowell Elementary	Phillips Street	25	No	Scott/Sherwood/Shakespear	25
Paxson Elementary	Higgins	30	No	Evans/Gerald/Hastings	25
Rattlesnake Elementary	Rattlesnake Drive	30	No	Mountain View/Pineview	25
Russell Elementary	Russell	35	Yes/25	NA	NA
CS Porter Middle School	Reserve	45	Yes/30	North/S 26th/Central	25
Meadow Hill Middle School	S. Reserve	25	No	NA	NA
Washington Middle School	Bancroft	25	No	Central/Hollis/Sussex	25
Hellgate High School	Higgins	30 N Bound/25 S Bound	No	Connell/Gerald	25
Sentinel High School	South Ave	30	No	Bancroft	25
Willard Alternative	6th	25	No	Oak/Ash	25
Big Sky High School	South Ave	35	No	S 31st/ North/S 33rd	25
Emma Dickinson Learning	Curtis	25	No	Carol Ann	25

Userdata/Engineering/Documents/School Zone Speed Limits

7-Nov-11





missoula



2385 Flynn Lane, Missoula, United States
Address is approximate



MONTANA CODE ANNOTATED

61-8-310. When local authorities may and shall alter limits or establish or alter area of school zone.
(section summarized)

(1)(d) the local authority may set a reasonable and safe limit that decreases the limit in a school zone ... **to not less than 80% ... of the limit that would be set on the basis of an engineering and traffic investigation, but not less than 15 miles an hour.**

If warranted by an engineering and traffic investigation, a local authority may adopt variable speed limits to adapt to traffic conditions by time of day, ...

MONTANA CODE ANNOTATED

61-8-310.

(7) A local authority shall consult with district officials for a school when:

(a) establishing or altering the area of a school zone near the school; or

(b) setting a speed limit pursuant to subsection (1)(d) in a school zone near the school.

RECOMMENDATIONS

Work with each school Safe Routes to School Committee to identify priorities for improvements:

Physical improvements such as sidewalks, crosswalks, ramps;

Curriculum improvements for educational programs;

Promotional events to reinforce educational goals.

Encourage creation of Safe Routes to School Committees at all local schools.

Work with Police on education and enforcement tools around schools.

Consider school speed zones in conjunction with other improvements.

Upgrade maintenance of signing and pavement markings, street lights, parking, loading and bus zone control around schools.





MISSOULA SCHOOL ZONE SPEED LIMITS

PUBLIC WORKS COMMITTEE
NOVEMBER, 9, 2011

61-8-310. When local authorities may and shall alter limits or establish or alter area of school zone. (1) If a local authority in its jurisdiction determines on the basis of an engineering and traffic investigation that the speed permitted under 61-8-303 and 61-8-309 through 61-8-313 is greater or less than is reasonable and safe under the conditions found to exist upon a highway or part of a highway, the local authority may set a reasonable and safe limit that:

(a) decreases the limit at an intersection;

(b) increases the limit within an urban district, but not to more than 65 miles an hour during the nighttime;

(c) decreases the limit outside an urban district, but not to less than 35 miles an hour on a paved road or less than 25 miles an hour on an unpaved road; or

(d) decreases the limit in a school zone or in an area near a senior citizen center, as defined in 23-5-112, or a designated crosswalk that is close to a school or a senior citizen center to not less than 80%, rounded down to the nearest whole number evenly divisible by 5, of the limit that would be set on the basis of an engineering and traffic investigation, but not less than 15 miles an hour. If warranted by an engineering and traffic investigation, a local authority may adopt variable speed limits to adapt to traffic conditions by time of day, provided that the variable limits comply with the provisions of 61-8-206.

(2) A board of county commissioners may set limits, as provided in subsection (1)(c), without an engineering and traffic investigation on a county road.

(3) A local authority in its jurisdiction may determine the proper speed for all arterial streets and shall set a reasonable and safe limit on arterial streets that may be greater or less than the speed permitted under 61-8-303 for an urban district.

(4) (a) An altered limit established as authorized under this section is effective at all times or at other times determined by the authority when appropriate signs giving notice of the altered limit are erected upon the highway.

(b) If a local authority decreases a speed limit in a school zone, the local authority shall erect signs conforming with the manual adopted by the department of transportation under 61-8-202 giving notice that the school zone has been entered, of the altered speed limit and the penalty provided in 61-8-726, and that the school zone has ended.

(5) Except as provided in subsection (1)(d), the commission has exclusive jurisdiction to set special speed limits on all federal-aid highways or extensions of federal-aid highways in all municipalities or urban areas. The commission shall set these limits in accordance with 61-8-309.

(6) A local authority establishing or altering the area of a school zone shall consult with the department of transportation and the commission if the school zone includes a state highway or a federal-aid highway or extension of a federal-aid highway.

(7) A local authority shall consult with district officials for a school when:

(a) establishing or altering the area of a school zone near the school; or

(b) setting a speed limit pursuant to subsection (1)(d) in a school zone near the school.

(8) A speed limit set on an unpaved road under subsection (1)(c) must be the same for all types of motor vehicles that may be operated on the road.

MONTANA CODE ANNOTATED

61-8-726. Violating speed limit in school zone -- penalty doubled -- disposition of fines.

- (1) A person convicted of violating a special speed limit in a school zone imposed by a local authority pursuant to 61-8-310(1)(d) is guilty of a misdemeanor. Upon arrest and conviction, the person shall be punished by a fine of not less than double the penalty provided for the violation in 61-8-711.**