

UNIV

***Finding the Right Funding Opportunity:  
Strategies for Success***

# *Overview of Today's Workshop*

Planning Your Search

Solicitations

Government or Private?

Finding Funding Opportunities

Practice Time

# *Planning Your Search*

- ▶ Start early
- ▶ Develop your research plan
  - ▶ Topics you want to pursue over next 5 years
    - ▶ Provides keywords
  - ▶ What do you need in order to be successful?
    - ▶ Helps identify types of funding to look for, and what collaborators you may need
- ▶ Tap into all available resources
  - ▶ Talk to department chair (promotion/tenure), colleagues who have been well-funded, Office of Sponsored Programs

*Finding Collaborators:*  
<http://unlvresearchmatch.unlv.edu/>

This is for UNLV faculty  
and All who Perform  
Research  
And are looking  
for MONEY!

# Overview of Solicitations

- ▶ Agencies name their funding announcements, or solicitations, differently:
  - ▶ Request for Proposals (RFP)
  - ▶ Request for Applications (RFA)
  - ▶ Funding Opportunity Announcement (FOA): CDC
  - ▶ Program Announcement (PA): NSF, NIH
  - ▶ Broad Agency Announcement (BAA): US Army
- ▶ Most university research is funded by federal agencies but foundations, industry, state agencies play an important role.

# *Solicitation Elements to Pay Attention To*

## Eligibility

UNLV is:

- ▶ A state controlled institution of higher education
- ▶ 501(c)3 nonprofit

Budget Limitations – total, allowable costs, cost sharing requirements

# Government Funding

## Advantages

- Have the most funding available
- More likely to make large grants
- More likely to pay indirect costs
- Easier to identify and research
- Have known application processes and firm deadlines
- Have set formats for applications
- Focus on functions that usually affect large portions of society
- Have renewal policies
- Have more staff and more resources for technical/ programming assistance
- Funds available to wider array of organizations

## Disadvantages

- More bureaucratic
- Proposals are lengthy, more complex
- May require cost-sharing and matching
- Reviewers tend to favor established applicants
- Many more requirements to follow once funds have been received
- Changing political trends affect continued availability of funds

# Foundation Funding

## Advantages

- More likely to focus on emerging issues
- Better source of funds for start-up or experimental projects
- Proposals are not as complex or lengthy
- Often more flexible to unique needs, circumstances and time frames
- Less likely to have bureaucratic requirements in grant administration
- Usually have fewer applicants
- Often better sources for more local needs

## Disadvantages

- Average grant size is smaller
- Priorities can change rapidly
- Applicants have little influence on the decision-making process
- Some unwilling to pay all project costs
- Limited staff size -- fewer opportunities for preliminary discussions
- May not explain a rejection, making resubmissions difficult



# *GPSA FUNDING*

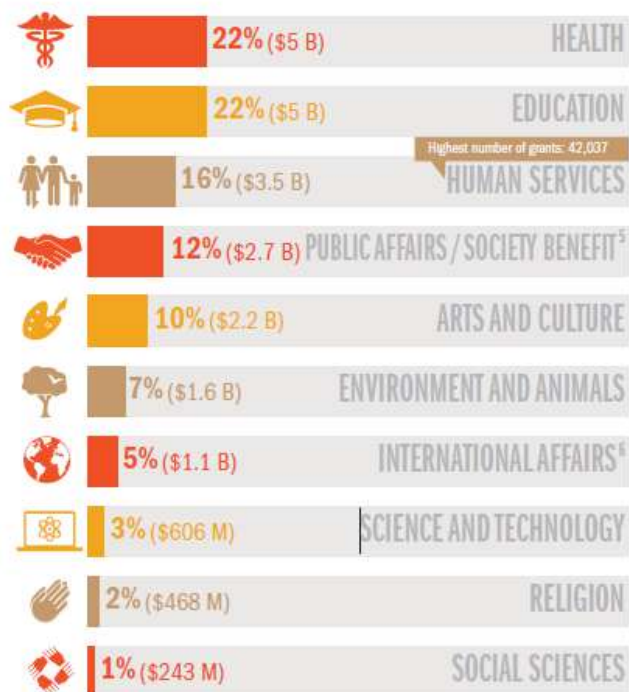
## Advantages

- All graduate students can receive this funding
- Can be used for attending conventions or conferences
- Can also be used for travel or research
- It is an easy application process
- The funds do not have to be paid back

## Disadvantages

- There are not!!!!!!

# Trends in foundation giving (2017)



# Where to Look Resources Available to UNLV

## UNLV OSP Resources:

- ▶ Tailored funding search service and links to other resources:  
<http://www.unlv.edu/research/proposal/funding>
- ▶ Bi-weekly Newsletter
- ▶ Grants Resource Center - <http://www.aascu.org/grc/gs>

## Resources external to OSP:

- ▶ Feeds and Listservs
- ▶ Federal regional workshops, and Program Officers
- ▶ Grants.gov
- ▶ UNLV Library Resources – Grant Forward, Foundation Directory

# Listservs and RSS Feeds

Social Work Research Network: <http://www.bu.edu/swrnet/>

NSF: <http://www.nsf.gov/funding/>

US Department of Education:

<https://public.govdelivery.com/accounts/USED/subscribers/new?preferences=true>

NIH: <http://nexus.od.nih.gov/all/subscribe/>

Foundation Center:

[http://foundationcenter.org/newsletters/?utm\\_medium=email&utm\\_source=pnd&utm\\_campaign=pndrfp20150821](http://foundationcenter.org/newsletters/?utm_medium=email&utm_source=pnd&utm_campaign=pndrfp20150821)

# Grants.gov

- ▶ A central storehouse of information where applicants can locate and apply for Federal grants on over 1,000 programs by:

- ▶ Basic Search

- ▶ Advanced Keyword search at

- <http://www.grants.gov/web/grants/search-grants.html>

- ▶ E-mail Subscriptions:

- <http://apply07.grants.gov/search/subscribeAll.do>

# Grants.gov

- ▶ Grants.gov: <http://www.grants.gov/web/grants/search-grants.html>
- ▶ Grants Resource Center:  
<http://www.unlv.edu/research/osp-locating-funding-opportunities>
- ▶ Foundation Center and Grant Forward:  
<http://guides.library.unlv.edu/content.php?pid=42477&sid=312624>

# *Grants Resource Center*

15

## Grants Resource Center (GRC)

<http://www.unlv.edu/research/osp-locating-funding-opportunities>

- Grant Search database
- Funding Alerts

# Equipment Grants

Department of Defense

Deadline: August or September

Program: DURIP is a multi-agency DoD program designed to improve the capabilities of U.S. institutions of higher education to conduct research and to educate scientists and engineers in areas important to national defense by providing funds for the acquisition of research equipment. Proposals may request \$50,000 to \$1,000,000. Proposals for purely instructional equipment are not eligible. General-purpose computing facilities are not appropriate for DURIP funding, but requests for computers for DoD-relevant research programs are appropriate.

<http://www.wpafb.af.mil/library/factsheets/factsheet.asp?id=9301>

Department of Energy

Deadline: Open

Program: This program grants available excess of used energy-related laboratory equipment to universities and colleges and other nonprofit educational institutions of higher learning in the United States for use in energy-oriented educational programs. <http://www.osti.gov/ledp/>



# Equipment Grants

## National Institutes of Health

Deadline: Campus limited submission: approximately January or February

Program: This program funds groups of NIH-supported investigators to purchase or upgrade commercially available instruments that cost at least \$100,000. The maximum award is \$600,000. Types of instruments supported include confocal and electron microscopes, biomedical imagers, mass spectrometers, DNA sequencers, biosensors, cell sorters, X-ray diffraction systems, and NMR spectrometers among others. <http://grants.nih.gov/grants/guide/pa-files/PAR-14-073.html>

## National Science Foundation

Deadline: Campus limited submission: approximately December

Program: The MRI Program is intended to assist with the acquisition or development of research instrumentation that is, in general, too costly and/or not appropriate for support through other NSF programs. Proposals must be for either acquisition or development, and can be for a single instrument or for equipment that when combined serves as an integrated research instrument (physical or virtual). Awards for instrumentation range from \$100,000 to \$4 million. Proposals that request funds less than \$100,000 will also be accepted for the disciplines of social, behavioral and economic sciences. An organization may submit or be included as a partner or sub awardee in no more than three proposals. If an organization submits or is included as a partner or sub awardee in three proposals, at least one must be for instrument development.

[http://www.nsf.gov/funding/pgm\\_summ.jsp?pims\\_id=5260](http://www.nsf.gov/funding/pgm_summ.jsp?pims_id=5260)

# Equipment Grants

Chemical & Transport Systems Division, Engineering Research Equipment Funding

Deadline: January

Program: Research equipment with a total cost of less than \$200,000 can be funded by individual or multiple programs within the Engineering Directorate or via joint funding with programs in other divisions or directorates. Programs that accept equipment proposals are: Thermal Transport & Thermal Processing; Combustion & Plasmas Systems; Interfacial, Transport & Thermodynamics; Separation & Purification Processes; Fluid Dynamics & Hydraulics; Kinetics, Catalysis & Molecular Processes.

[http://www.nsf.gov/publications/pub\\_summ.jsp?ods\\_key=nsf0193](http://www.nsf.gov/publications/pub_summ.jsp?ods_key=nsf0193)

Chemistry Research Instrumentation and Facilities (CRIF)

Deadline: None

CRIF provides funds to research institutions and consortia thereof for the purchase of multi-user instruments and for the establishment and support of multi-user research facilities in the chemical sciences. NSF has temporarily suspended the CRIF program. [http://www.nsf.gov/funding/pgm\\_summ.jsp?pims\\_id=5641](http://www.nsf.gov/funding/pgm_summ.jsp?pims_id=5641)

# Equipment Grants

## CISE Computing Research Infrastructure (CRI)

Deadline: First Tuesday in October

Program: The CRI program drives discovery and learning in the computing disciplines by supporting the creation, enhancement and operation of world-class computing research infrastructure. CRI supports two classes of awards: Institutional Infrastructure, and Community Infrastructure.

[http://www.nsf.gov/funding/pgm\\_summ.jsp?pims\\_id=12810](http://www.nsf.gov/funding/pgm_summ.jsp?pims_id=12810)

## Instrument Development for Biological Research (IDBR)

Deadline: Last Friday in July

Program: This Program supports the development of instrumentation that addresses demonstrated needs in biological research. The Program accepts two types of proposals: Innovation Proposals and Bridging

Proposals. [http://www.nsf.gov/funding/pgm\\_summ.jsp?pims\\_id=9187](http://www.nsf.gov/funding/pgm_summ.jsp?pims_id=9187)

# UNLV Graduate College Fellowships & Scholarships

20

▶ <https://www.unlv.edu/graduatecollege/scholarships>

- ▶ The Barrick Graduate Fellowship
- ▶ The Dreamcatcher Scholarship
- ▶ Summer Doctoral Fellowship Program
- ▶ The UNLV Foundation Board of Trustees Fellowship
- ▶ UNLV Graduate College STEM Fellowship
- ▶ The Donald Carns Scholarship
- ▶ The Donna Weistrop and David B. Shaffer Scholarship
- ▶ The School of Public Policy and Leadership Travel Award
- ▶ The President's UNLV Foundation Graduate Research Fellowship
- ▶ The UNLV Graduate Access Childcare Scholarship
- ▶ The Summer Session Scholarship
- ▶ The Sterling Scholarship
- ▶ The Alumni Graduate Scholarship
- ▶ The Patricia Sastaunik Scholarship
- ▶ The McNair Post-Baccalaureate Scholarship
- ▶ The Janine Lee Memorial Scholarship
- ▶ The James F. Adams/GPSA Scholarship

# Scholarships for ALL

- ▶ <http://unlvresearchmatch.unlv.edu/>
- ▶ <http://www.unlv.edu/research/proposal-development/funding>
- ▶ <http://www.unlv.edu/research/proposal/funding>
- ▶ <http://www.aascu.org/grc/gs>
- ▶ <http://www.bu.edu/swrnet/>
- ▶ <http://www.nsf.gov/funding/>
- ▶ <https://public.govdelivery.com/accounts/USED/subscribers/new?preferences=true>
- ▶ <http://nexus.od.nih.gov/all/subscribe/>
- ▶ [http://foundationcenter.org/newsletters/?utm\\_medium=email&utm\\_source=pnd&utm\\_campaign=pndrfp20150821](http://foundationcenter.org/newsletters/?utm_medium=email&utm_source=pnd&utm_campaign=pndrfp20150821)
- ▶ <http://www.grants.gov/web/grants/search-grants.html>
- ▶ <http://www.unlv.edu/research/osp-locating-funding-opportunities>
- ▶ <http://guides.library.unlv.edu/content.php?pid=42477&sid=312624>

# Scholarships for ALL

- ▶ <http://www.kasf.org/>
- ▶ <https://www.dunkindonuts.com/en/about/scholarships>
- ▶ <https://www.eduinreview.com/blog/2009/06/25-corporate-scholarships-for-undergrads/>
- ▶ <https://www.smith.edu/admission-aid/financial-aid/first-year/merit>
- ▶ <https://www.scholarships.com/financial-aid/college-scholarships/scholarships-by-grade-level/graduate-scholarships/albert-smith-conservation-scholarship/>
- ▶ <https://www.scholarships.com/financial-aid/college-scholarships/scholarship-directory/student-organization/american-red-cross>
- ▶ <https://www.redcross.org/volunteer/become-a-volunteer/student-nurse-scholarship.html>
- ▶ <https://www.scholarships.com/financial-aid/college-scholarships/scholarship-directory/student-organization/boy-scouts>
- ▶ <https://www.scholarships.com/financial-aid/college-scholarships/scholarship-directory/student-organization>
- ▶ <http://www.collegescholarships.org/scholarships/scouts.htm>
- ▶ <https://www.girlscouts.org/en/our-program/scholarships.html>

# Scholarships for Hospitality

- ▶ <https://www.jamesbeard.org/scholarships>
- ▶ <https://www.jamesbeard.org/jbf-national-scholars-program>
- ▶ <https://www.ahlef.org/academic-scholarships>
- ▶ <http://www.tourismcares.org/academic-scholarships/>
- ▶ <https://newh.org/available-scholarships/>
- ▶ <https://www.ifsea.org/college-scholarships.html>
- ▶ <https://www.unlv.edu/HOSPITALITY/SCHOLARSHIPS>

# *Scholarships for mathematics, sciences or engineering, K-12, Postdoctoral Fellowship*

- ▶ <https://goldwater.scholarsapply.org/>
- ▶ [https://nsf.gov/funding/education.jsp?fund\\_type=2](https://nsf.gov/funding/education.jsp?fund_type=2)
- ▶ [https://nsf.gov/funding/education.jsp?fund\\_type=3](https://nsf.gov/funding/education.jsp?fund_type=3)
- ▶ [https://nsf.gov/funding/education.jsp?fund\\_type=4](https://nsf.gov/funding/education.jsp?fund_type=4)



# LGBTQI

- ▶ For the LGBTQI Community: Do not have to hold U.S. citizenship, a green card, or an F-1 visa.
- ▶ <https://www.stonewallfoundation.org/scholarships>
- ▶ [https://pointfoundation.org/?gclid=Cj0KCCQjwl9zdBRDgARIsAL5Nyn1GXd8tVCvWBilPrAWRkn1q2gCaxRpRmwW1YP61YuT5Mf-PXf4zWAaAjjzEALw\\_wcB](https://pointfoundation.org/?gclid=Cj0KCCQjwl9zdBRDgARIsAL5Nyn1GXd8tVCvWBilPrAWRkn1q2gCaxRpRmwW1YP61YuT5Mf-PXf4zWAaAjjzEALw_wcB)
- ▶ <https://www.nitrocollege.com/scholarships/lgbtq>
- ▶ <https://www.nerdwallet.com/blog/loans/student-loans/great-lgbt-scholarships/>
- ▶ <https://www.bestcolleges.com/financial-aid/lgbtq-scholarships/>
- ▶ <https://www.scholarshipsforwomen.net/lesbians/>

# Scholarships for Asian and Pacific Islanders Banks & Credit Cards

- ▶ <https://www.scholarshipsforwomen.net/asian/>
- ▶ <https://www.affordablecollegesonline.org/college-resource-center/scholarships-for-asian-and-pacific-islander-students/>

## Bank and Credit Cards

- ▶ <https://www.usbank.com/community/financial-education/scholarship-application-form.html>
- ▶ <https://www.discover.com/student-loans/scholarships/>

# Scholarships for Undergraduates Only

- ▶ <https://apps.ess.unlv.edu/cohenscholarship/>
- ▶ This is for undergraduate students to study abroad with a focus on less commonly taught languages, including but not limited to Arabic, Chinese, Korean, Portuguese, Russian, and Swahili.
- ▶ <https://www.borenawards.org/>
- ▶ <https://www.unlv.edu/csun/scholarships>
- ▶ [This is a link to many scholarships and even a bus pass for the year.](#)
- ▶ [https://nsf.gov/funding/education.jsp?fund\\_type=1](https://nsf.gov/funding/education.jsp?fund_type=1)

## *Scholarships for First Gen's*

- ▶ <https://www.fastweb.com/college-scholarships/articles/first-generation-scholarships-for-students>
- ▶ <https://usascholarships.com/first-generation-scholarships/>

# Scholarships for Women

- ▶ <https://lasvegas-nv.aauw.net/about-us/local-scholarships/>
- ▶ <https://www.affordablecollegesonline.org/womens-guide-paying-for-college/>
- ▶ <https://www.scholarshipsforwomen.net/native-americans/>

## *Jack Kent Cooke Scholarship*

- ▶ This for students that want to transfer from CSN to UNLV.
- ▶ This scholarship awards recipients up to \$40,000 a year to transfer from a community college to a four-year school to obtain a bachelor's degree.
- ▶ <https://www.jkcf.org/our-scholarships/undergraduate-transfer-scholarship/>

## *Scholarships for Single Mothers*

- ▶ <https://www.salliemae.com/college-planning/college-scholarships/types-of-scholarships/scholarships-for-women-and-single-mothers/>
- ▶ <https://www.scholarships.com/financial-aid/college-scholarships/scholarships-by-type/college-scholarships-and-grants-for-single-mothers/>

## *Scholarships for Native Americans*

- ▶ Full-time students interested in pursuing careers related to the environment or Native American or Alaskan Native students pursuing careers in tribal public policy or Native healthcare are eligible.
- ▶ <https://www.udall.gov/OurPrograms/Scholarship/Scholarship.aspx>
- ▶ <http://www.college-financial-aid-advice.com/native-american-scholarships.html>
- ▶ <https://www.bie.edu/ParentsStudents/Grants/>



# Scholarships for People of Color Black-Hispanic-Mix or Biracial

- ▶ <https://www.affordablecollegesonline.org/college-resource-center/making-college-affordable-online-guide-for-hispanic-students/>
- ▶ <https://www.accreditedschoolsonline.org/resources/college-scholarships-for-minority-students/>
- ▶ <https://www.rmhc.org/>
- ▶ <http://www.jackierobinson.org/apply/>
- ▶ <https://www.aspeninstitute.org/programs/program-on-philanthropy-and-social-innovation-psi/william-randolph-hearst-endowed-fellowship-for-minority-students/>
- ▶ <https://www.unlv.edu/finaid/scholarships-grants>

## *Scholarships for People of Color Black-Hispanic-Mix or Biracial*

- ▶ <https://www.accreditedschoolsonline.org/resources/college-scholarships-for-minority-students/>
- ▶ <https://www.tuitionfundingsources.com/registration/>
- ▶ <https://studentscholarships.org/awards.php#sthash.pJZ8Y7IN.dpbs>
- ▶ <https://www.scholarships4school.com/>
- ▶ [https://www.unigo.com/m/dont\\_go](https://www.unigo.com/m/dont_go)
- ▶ <https://www.unigo.com/scholarships#/fromscholarshipexperts>
- ▶ [https://www.uncf.org/scholarships?gclid=EAlaIQobChMI5Kzwwk\\_Tv3QIVhGh-Ch1K9gqMEAAAYAiAAEgKPdPD\\_BwE](https://www.uncf.org/scholarships?gclid=EAlaIQobChMI5Kzwwk_Tv3QIVhGh-Ch1K9gqMEAAAYAiAAEgKPdPD_BwE)

# Scholarships for People of Color Black-Hispanic-Mix or Biracial

- ▶ <https://www.scholarships.com/financial-aid/college-scholarships/scholarships-by-type/minority-scholarships/>
- ▶ <https://www.scholarships.com/financial-aid/college-scholarships/scholarships-by-type/minority-scholarships/african-american-scholarships/>
- ▶ <http://www.monster.com/career-advice/article/african-american-networking-groups>
- ▶ <http://www.naacp.org/pages/search-results?q=scholarships>
- ▶ <https://www.discover.com/student-loans/scholarships/>
- ▶ <https://www.southwest.com/html/southwest-difference/community-involvement/hispanic/partners.html>

# Scholarships for Nursing

- ▶ <http://www.nursingscholarship.us/>
- ▶ <https://www.discovernursing.com/scholarships#no-filters>
- ▶ <http://www.nursingsociety.org/advance-elevate/careers/nursing-scholarship-opportunities>
- ▶ <http://www.hrsa.gov/loanscholarships/scholarships/nursing/>
- ▶ <https://www.scholarships.com/financial-aid/college-scholarships/scholarships-by-major/nursing-scholarships/>
- ▶ <http://www.aacn.nche.edu/students/financial-aid>
- ▶ <http://www.aacn.nche.edu/students/scholarships>
- ▶ <http://www.collegescholarships.org/nursing.htm>
- ▶ <http://www.collegescholarships.org/scholarships/nursing/male.htm>
- ▶ <http://nursejournal.org/articles/14-best-nursing-scholarships-for-men/>
- ▶ <https://www.discovernursing.com/scholarship/henry-dunant-scholarship-male-nursing-students#.V9TDJoWcGdI>
- ▶ <http://minoritynurse.com/nursing-scholarships/>
- ▶ <http://www.gocollege.com/financial-aid/college-grants/nursing.html>
- ▶ <http://aamn.org/scholarships>

## **Scholarships for Dental/Psychology**

- ▶ <https://www.apa.org/about/awards/>
- ▶ <https://www.apa.org/about/awards/nih-ugsp.aspx>
- ▶ <https://www.apa.org/apags/programs/scholarships/index.aspx>
- ▶ <https://www.asdanet.org/index/dental-student-resources/scholarships-and-repayment-plans/scholarships>

# Scholarships for ALL

National Science Foundation (NSF) – Faculty Early Career Development Program (CAREER)

[http://www.nsf.gov/funding/pgm\\_summ.jsp?pims\\_id=503214](http://www.nsf.gov/funding/pgm_summ.jsp?pims_id=503214)

Deadline: July

The Faculty Early Career Development (CAREER) Program is a Foundation-wide activity that offers the National Science Foundation's most prestigious awards in support of junior faculty who exemplify the role of teacher-scholars through outstanding research, excellent education and the integration of education and research within the context of the mission of their organizations. Such activities should build a firm foundation for a lifetime of leadership in integrating education and research. NSF encourages submission of CAREER proposals from junior faculty and especially encourages women, members of underrepresented minority groups, and persons with disabilities to apply.

The CAREER budget request should reflect the scope of the research and education plans, and the practices within your discipline. The minimum CAREER award size is \$400,000, including indirect cost or overhead, for a 5- year period except in the Directorate for Biological Sciences (BIO) and the Office of Polar Programs (OPP). Proposals to BIO and OPP must request a minimum of \$500,000 (approximately \$100,000 per year) for the 5-year duration. There is no maximum award size but be realistic about your budget expectations and what has been funded before by the Program considering your proposal. The average CAREER award size varies across NSF. Some Directorates/ Divisions/Programs (e.g., Directorate for Engineering) usually fund CAREER awards closer to the minimum, while some others have a higher average award size. Before preparing the budget for your CAREER proposal, you are strongly encouraged to contact your disciplinary Program Officer or your Division CAREER contact to discuss your planned request.

PECASE: Each year NSF selects nominees for the Presidential Early Career Awards for Scientists and Engineers (PECASE) from among the most meritorious recent CAREER awardees. Selection for this award is based on two important criteria: 1) innovative research at the frontiers of science and technology that is relevant to the mission of the sponsoring organization or agency, and 2) community service demonstrated through scientific leadership, education or community outreach. These awards foster innovative developments in science and technology, increase awareness of careers in science and engineering, give recognition to the scientific missions of the participating agencies, enhance connections between fundamental research and national goals, and highlight the importance of science and technology for the Nation's future. Individuals cannot apply for PECASE. These awards are initiated by the participating federal agencies. At NSF, up to twenty nominees for this award are selected each year from among the PECASE-eligible CAREER awardees who are most likely to become the leaders of academic research and education in the twenty-first century.

# Scholarships for ALL

National Institutes of Health (NIH) Career Development Awards (K Series)

<http://www.nichd.nih.gov/training/extramural/Pages/career.aspx>

Deadlines: March, July and November

K awards provide support for senior postdoctoral fellows or faculty-level candidates. K awards are designed to promote the career development of specific groups of individuals based on their past training and career stage.

The objective of these programs is to bring candidates to the point where they are able to conduct their research independently and are competitive for major grant support. Current NIH policies require that, by the time of the award, applicants must be U.S. citizens, non-citizen U.S. nationals, or have been lawfully admitted for permanent residence. Please note that this requirement applies to all the mechanisms below, EXCEPT the K99/R00.

Two main categories:

Mentored Career Development Awards (5)

Career Development Awards for Independent Investigators (2)

National Institutes of Health - NIH Director's Early Independence Awards (DP5)

<https://grants.nih.gov/funding/index.htm>

Deadlines: January, May, and September

The NIH Director's Early Independence Award Program supports exceptional investigators who wish to pursue independent research directly after completion of their terminal doctoral/research degree or clinical residency, thereby forgoing the traditional post-doctoral training period and accelerating their entry into an independent research career. An applicant organization may submit up to two applications in response to this FOA.

# Scholarships for ALL

General Medical and Biomedical

Deadlines:

R21/R33 Deadlines: Feb. 16, Jun. 16, Oct. 16.

AIDS Deadlines: Jan. 7, May 7, Sep. 7

This Funding Opportunity Announcement (FOA) seeks to facilitate the entry of new-to-NIH investigators into basic chemistry research applied to drug abuse and addiction.

An R21/R33 Phased Innovation Award has two phases: (1) R21 for milestone-driven exploratory or feasibility studies with a possible transition to, (2) the R33 for expanded development. Transition to the R33 depends on the ability of the applicant to meet predefined milestones (which are evaluated in peer review and negotiated with NIDA Scientific/Research Contract prior to the R21 award), as well as program priorities and the availability of funds. NIDA anticipates that a maximum of 50%-70% of the funded R21 phase awards will progress to the R33 award.

American Gastroenterological Association-Elsevier Gut Microbiome Pilot Research Award

<https://www.gastro.org/research-and-awards/research-awards/apply-for-awards>



# Scholarships for ALL

Society of Nuclear Medicine and Molecular Imaging – Pilot Research Grant

<http://www.snmmi.org/AboutSNMMI/Content.aspx?ItemNumber=4167&navItemNumber=672>

Deadline: February

This award provides awards of up to \$25,000 to basic and clinical scientists in the early stages of their careers. Applicants must be no more than five years post nuclear medicine/molecular imaging training. Applicants must not have served as the principal investigator of a peer-reviewed grant for more than \$50,000 in a single calendar year.

Pharmaceutical Research and Manufacturers of America Foundation – Research Starter Grants

<http://phrmafoundation.org/download/Starter%20Grant.pdf>

Deadlines: February 1 for Health Outcomes, Translational Medicine and Therapeutics

September 1 for Informatics, Pharmacology/Toxicology, Pharmaceuticals

October 1 for Adherence Improvement Young Investigator Grant Program

The purpose of the PhRMA Foundation Research Starter Grants is to offer financial support to individuals beginning their independent research careers at the faculty level. Individuals holding a rank of instructor, assistant professor, or investigator at the doctoral level are eligible to apply for a research starter grant. The program is not intended for individuals in post-doctoral training programs. Applicants must be sponsored by the department within which the proposed research is to be undertaken. Applicants must be based in an academic, healthcare, or other research institution (e.g., schools of medicine, public health, pharmacy, nursing, etc.) and should have the skills and experience required to carry out the proposed work.

# Scholarships for ALL

- ▶ **Health Effects Institute – New Investigator Award** <http://www.healtheffects.org/rosenblith.htm>
  - ▶ Deadline: April for Letter of Intent
  - ▶ The award provides three years of funding for a small research project on the health effects of air pollution to a new investigator at the assistant professor or equivalent level. Scientists of any nationality holding a PhD, ScD, MD, DVM, or DrPH degree or equivalent are eligible to apply. At the time of application the candidate should have two to six years of research experience after obtaining the highest degree and must be at the Assistant Professor level or equivalent at an academic or research institution.
- Searle Scholars Program**
- ▶ <http://www.searlescholars.net/go.php?id=5>
  - ▶ Deadline: September
  - ▶ The program invites applications from selected universities and research institutions. Awards of \$100,000 per year for three years support outstanding young scientists pursuing independent research careers in biochemistry, cell biology, genetics, immunology, neuroscience, pharmacology, and related areas in chemistry, medicine, and the biological sciences. Candidates should have begun their first appointment as an independent investigator at the assistant professor level on or after July 1 of the year prior to the application year.

# Scholarships for the Medical Field

MQ: Transforming Mental Health – MQ Fellows Programme

<https://www.mqmentalhealth.org/research/research-programmes>

Deadlines:        April for Letter of Intent  
                         August for invited proposal

Supports early career scientists and clinicians who are asking the difficult and challenging questions that will contribute to transformative advances in mental health research. Awards are up to £75,000 per year for three years.

Infectious Diseases Society of America – Young Investigator Awards

[http://www.idsociety.org/Young\\_Investigator\\_Award\\_Eligibility\\_Requirements/](http://www.idsociety.org/Young_Investigator_Award_Eligibility_Requirements/)

Deadline:        March

This award provides funding for young investigators who develop and implement a basic, clinical, or health services research project focused on a geriatric aspect of infectious diseases. Applicants must have applied for the GEMSTAR award and received a fundable score as defined by the National Institutes of

Health. The award is administered by IDSA and the Alliance for Academic Internal Medicine

(AAIM)/Association of Specialty Professors (ASP). Award Amount: (1) Two-year award of \$200,000 (\$150,000 research grant from National Institute of Aging and \$50,000 career/professional development award from IDSA/AAIM/ASP)

International Life Science Institute (ILSI) North America – Future Leader Award

<http://www.ilsa.org/NorthAmerica/Pages/AwardPrograms.aspx>

Deadline:        June

The ILSI North America Future Leader Award, given annually to promising nutrition and food scientists, allows new investigators the opportunity to add to an existing project or to conduct exploratory research that might not receive funding from other sources or add to an existing project. Consideration will be given to individuals proposing research in the areas of experimental nutrition, nutrition and toxicology, and nutrition and food science. Grants extend for a period of 2 years at a funding level of \$15,000 USD per year. Funds may not be used for overhead or to support the investigator's salary.

# Scholarships for the Medical Field

William T. Grant Foundation – Scholars Program [http://www.wtgrantfoundation.org/funding\\_opportunities/fellowships/william\\_t\\_grant\\_scholars](http://www.wtgrantfoundation.org/funding_opportunities/fellowships/william_t_grant_scholars)

Deadline: July

The Scholars Program is for early-career researchers in the social, behavioral, and health sciences. The Foundation encourages Scholars to tackle important questions that will advance theory, policy, and practice for youth on any of three topics: 1) reducing inequality, 2) understanding the use of research evidence, and 3) understanding social settings. Applicants must have received their terminal degree within seven years of submitting their application

Klingenstein Fund – Klingenstein-Simons Fellowship Awards in the Neurosciences <http://www.klingfund.org/>

Deadline: January

This award supports young investigators in the early stages of their careers engaged in basic or clinical research that may lead to a better understanding of neurological and psychiatric disorders. The candidate should be within four years of receiving his/her first tenure track appointment. The award of \$225,000 is payable over a three-year period.

March of Dimes – Basil O'Connor Starter Scholar Research Award <https://www.marchofdimes.org/professionals/scholarships-and-grants.aspx>

Deadline: March for letter of nomination

This award is designed to support young scientists just embarking on their independent research careers in areas consonant with those of the March of Dimes mission to improve the health of babies by preventing birth defects, premature birth and infant mortality. Applicants may not be recipients of a major grant (e.g., an R01, or other grant exceeding \$200,000 a year) at the time of the application.

# Scholarships for the Medical Field

James S. McDonnell Foundation – Scholar Award in Complex Systems

<https://www.jsmf.org/programs/cs/#>

Deadline: March

The program emphasis is furthering the science of complex systems via the continued development of the theory and tools used in the study of complex research questions and not on particular fields of research. Awards are \$450,000. Principal investigators between 5 and 15 years post Ph.D. are eligible.

American Society for Mass Spectrometry <https://www.asms.org/about-asms-awards>

Deadline: November 30

Academic scientists within four years of joining the tenure-track faculty are eligible for awards of \$35,000 for research in mass spectrometry.

American Speech-Language-Hearing Foundation –New Investigators Research Grant

<http://www.ashfoundation.org/grants/default.htm>

Deadline: April

New scientists earning their latest degree in communication sciences within the last five years are eligible to compete for \$5,000 grants to pursue research audiology or speech-language pathology.

# Scholarships for the Medical Field

The Foundation for Alcohol Research – Grant Program <http://www.abmrf.org/>

Deadlines: February 1 and September 1

The Foundation accepts applications for grants to conduct research on important aspects of alcohol consumption and its effects. Highest priority is given to young investigators, new to the field or trained in the field, to start a new line of independent research.

Brain and Behavior Research Foundation

<http://bbrfoundation.org/yi>

Deadline: February

Offers up to \$30,000 per year for up to two years to enable promising investigators to either extend research fellowship training or begin careers as independent research faculty. Basic and/or clinical investigators are supported; research must be relevant to serious brain and behavior disorders such as schizophrenia, mood disorders, anxiety disorders, or child and adolescent mental illnesses.

U.S.-Israel Binational Science Foundation – Start-Up Research Grant

<http://www.bsf.org.il/bsfpublic/DefaultPage1.aspx?PageId=23&innerTextID=23>

Since its inception, the BSF has awarded some \$480 million to over 4,000 research projects of the highest quality. Many of these have led to important scientific, medical and technological breakthroughs with wide-ranging practical applications. Projects must have a strong element of cooperation between an Israeli and an American scientist(s), and fall within the areas of research supported in that year by the BSF. In addition, at least one of the principal investigators should have attained his/her Ph.D., M.D. degree or equivalent, no more than ten years prior to submitting the proposal.

# Scholarships for the Medical Field

Alzheimer's Association, New Investigator Research Grants [http://www.alz.org/research/alzheimers\\_grants/types\\_of\\_grants.asp](http://www.alz.org/research/alzheimers_grants/types_of_grants.asp)

Deadline: LOI - July

Application - August

Grants provide new investigators with funding that will allow them to develop preliminary or pilot data, to test procedures and to develop hypotheses. Each award is limited to \$100,000 for up to two years. Eligibility is restricted to investigators who have less than 10 years of research experience after receipt of their terminal degree.

American Asthma Foundation – Scholar <http://www.americanasthmafoundation.org/grant-programs>

Deadline: February

AAF will provide Scholar Awards exclusively to early- to mid-career scientists in the United States. AAF Scholar Awards will provide \$150,000 per year for two years, with the possibility of an additional \$150,000 for a third year, based on progress and potential. It is anticipated that many of the projects will continue into a third year and thus benefit from the full \$450,000 Award.

Scientists may apply if their initial independent faculty appointment at the level of Assistant Professor or equivalent was not before February 1st, ten years before the deadline. Applicants should have an independent research program, with national-level, independent funding. There is no citizenship requirement.

# Scholarships for the Medical Field

American Diabetes Association -- Junior Faculty Award and Career Development Award

[http://professional.diabetes.org/Diabetes\\_Research.aspx?typ=18&cid=89693](http://professional.diabetes.org/Diabetes_Research.aspx?typ=18&cid=89693)

Deadlines: Mid-January and Mid-July

Junior Faculty Awards support new investigators who are establishing their independence in diabetes research; applicants can have any level of faculty appointment up through assistant professor. Career Development Awards are designed to assist outstanding assistant professor level faculty investigators in conducting diabetes-related research.

American Liver Foundation – Liver Scholar Award

[http://www.liverfoundation.org/2014\\_research\\_awards/2014\\_liver\\_scholar\\_award/](http://www.liverfoundation.org/2014_research_awards/2014_liver_scholar_award/)

Deadline: December

The Liver Scholar Award provides young scientists with support for their research to bridge the gap between completion of research training and attainment of status as an independent research scientist. The additional research experience provided by this award is intended to enable them to successfully compete for research awards from national sources, particularly the NIH. Well-trained investigators who hold MD, PhD or MD/PhD degrees and are pursuing a career in liver disease research are encouraged to apply.



# Scholarships for the Medical Field

American College of Rheumatology - Career Development Bridge Funding Award: K Bridge  
[http://www.rheumatology.org/Foundation/Awards/Career\\_Development\\_Bridge\\_Funding\\_Award\\_K\\_Bridge/](http://www.rheumatology.org/Foundation/Awards/Career_Development_Bridge_Funding_Award_K_Bridge/)

Deadline: May 1; Aug. 1; Dec. 31

The purpose of the Career Development Bridge Funding Award: K Bridge Award is to provide bridge funding for promising investigators as they are revising outstanding career development awards (e.g., NIH K08/K23 awards or VA CDA-2 awards). Through this bridge funding award, the Foundation plans to support young faculty members so that they have the highest likelihood of achieving success in obtaining longer term career development awards. Applicants must have received a score and funding decision on their NIH K08, K23, or VA CDA-2 award

Applicants must be ACR or ARHP members with an MD, DO, PhD or equivalent doctoral level degree from an accredited institution, MD/PhDs and DO/PhDs are eligible to apply. Past recipients of this award and applicants with A1 resubmission status are not eligible to apply. Applicant must be a citizen or non-citizen national of the United States, or be in lawful possession of a permanent resident card.

Scleroderma Foundation – New Investigator Grant [http://www.scleroderma.org/site/PageServer?pagename=prof\\_research\\_types#new](http://www.scleroderma.org/site/PageServer?pagename=prof_research_types#new)

Deadline: September

These grants are available to promising new investigators who hold faculty or equivalent positions and who wish to pursue a career in research related to systemic sclerosis. This grant supports promising research that is likely to lead to individual research project grants. Applicants may request up to \$50,000 (Up to 8 percent of the direct costs per year of award may be set aside as indirect costs. These new investigator grants may not be used to support thesis or dissertation research or fellowship training. Applicants must have a doctoral degree in Medicine, Osteopathy, Veterinary Medicine or one of the sciences; and must have completed a postdoctoral fellowship by the grant award date.

# Scholarships for the Medical Field

Scoliosis Research Society – New Investigator Grant

<http://www.srs.org/research/>

Deadline: April 1 and October 1

This grant is specifically targeted to new investigators. The maximum award is \$25,000 for up to two years.

Susan G. Komen for the Cure - Career Catalyst Research Grants (CCR) <http://ww5.komen.org/ResearchGrants/FundingOpportunities.html>

Pre-Application Submission deadline: Jul. 17, 2014

CCR Grants provide unique opportunities for scientists who have held faculty positions for no more than six years at the time of full application to achieve research independence. CCR grants provide support for hypothesis-driven research projects that have significant potential to advance our understanding of breast cancer, lead to reductions in breast cancer incidence and/or mortality, and move us toward the goal of a world without breast cancer.

There are 2 Research Focus Areas:

- Career Catalyst Research Grants – Basic/Translational Research: This award mechanism is appropriate for both basic (i.e. Ph.D.) or clinical (i.e. M.D.) fellows proposing research projects that are laboratory or field-based and do not meet Komen's definition of clinical research. Studies focusing on quality of life or survivorship issues are not appropriate for this mechanism.
- Career Catalyst Research Grants – Clinical Research: This award mechanism is appropriate for clinical (i.e. M.D.) fellows/faculty proposing clinical, patient-oriented research projects that involve direct interactions with human subjects/patients. This includes studies such as therapeutic interventions or clinical trials. Komen defines clinical research as hypothesis driven, patient-oriented research for which an investigator directly interacts with human subjects/patients, in conjunction with laboratory-based research, as appropriate. This includes studies such as therapeutic interventions or clinical trials.

# Scholarships for the Medical Field

Damon Runyon Cancer Research Foundation – Innovation Award

[http://www.damonrunyon.org/for\\_scientists/more/innovation\\_award\\_overview](http://www.damonrunyon.org/for_scientists/more/innovation_award_overview)

Deadline: July

The Damon Runyon-Rachleff Innovation Award is designed to provide support for the next generation of exceptionally creative thinkers with “high risk/high reward” ideas that have the potential to significantly impact our understanding of and/or approaches to the prevention, diagnosis or treatment of cancer.

American Association for Cancer Research Career Development Awards <http://www.aacr.org/home/scientists/aacr-research-funding.aspx> Deadlines vary.

Open to junior faculty who completed postdoctoral studies or clinical fellowships no more than three years prior to the start of the grant term. Awards provide two-year grants of \$50,000 per year.

Lymphoma Research Foundation – Young Investigator Grants <http://www.lymphoma.org/site/pp.asp?c=bkLTKaOQLmK8E&b=8490967>

Deadline: September

Post-Doctoral Fellowships and Clinical Investigator Career Development Awards support training in lymphoma and clinical research. Applicants must have completed two years of their fellowship, or not more than two years as a junior faculty instructor or assistant professor at the start of the award period. Engineering and Computer Science

# Scholarships for the Medical Field

NSF - Computer and Information Science and Engineering (CISE) Research Initiation Initiative (CRII)  
[http://www.nsf.gov/funding/pgm\\_summ.jsp?pims\\_id=504952](http://www.nsf.gov/funding/pgm_summ.jsp?pims_id=504952)

Deadline: Fourth Wednesday in September, Annually Thereafter

With the goal of encouraging research independence immediately upon obtaining one's first academic position after receipt of the PhD, the Directorate for Computer and Information Science and Engineering (CISE) will award grants to initiate the course of one's independent research. Understanding the critical role of establishing that independence early in one's career, it is expected that funds will be used to support untenured faculty or research scientists (or equivalent) in their first two years in an academic position after the PhD. One may not yet have received any other grants in the Principal Investigator (PI) role from any institution or agency, including from the CAREER program or any other award post-PhD. Serving as co-PI, Senior Personnel, Post-doctoral Fellow, or other

Fellow does not count against this eligibility rule. It is expected that these funds will allow the new CISE Research Initiation Initiative PI to support one or more graduate students for up to two years.

Principal Investigators are eligible to apply to this CRII solicitation only if ALL the following criteria are met at the time of submission. The PI should:

- Be a US Citizen, Permanent Resident or National;
- Hold a primary appointment in a computer science, information science, or electrical or computing engineering department, or in a related field of computational science (where the PI would normally submit proposals to CISE programs); and
- Be in the first two years of a tenure-track or research science or education position (or equivalent). The number of years includes any academic position held post-PhD, exclusive of postdoctoral appointments.

American Chemical Society Petroleum Research Fund New Investigator Grants (DNI), <https://www.acs.org/content/acs/en/funding-and-awards.html>

Deadline: September 15

Award of \$100,000 over two years for scientists and engineers who are within the first three years of their first academic appointment.

# Scholarships for the Medical Field

NSF Ocean Sciences Research Initiation Grants (OCE-RIG)  
[http://www.nsf.gov/funding/pgm\\_summ.jsp?pims\\_id=504681](http://www.nsf.gov/funding/pgm_summ.jsp?pims_id=504681)

Deadline: January 15

The Division of Ocean Sciences (OCE) offers Research Initiation Grants in an effort to increase the participation of under-represented groups in the ocean sciences. Research Initiation Grants provide startup funding for researchers who have been recently appointed to tenure track (or equivalent) positions, with the twin goals of enhancing the development of their research careers and broadening the participation of under-represented groups in ocean sciences.

U.S.-Israel Binational Science Foundation – Start-Up Research Grant

<http://www.bsf.org.il/bsfpublic/DefaultPage1.aspx?PageId=23&innerTextID=23>

Since its inception, the BSF has awarded some \$480 million to over 4,000 research projects of the highest quality. Many of these have led to important scientific, medical and technological breakthroughs with wide-ranging practical applications. Projects must have a strong element of cooperation between an Israeli and an American scientist(s), and fall within the areas of research supported in that year by the BSF. In addition, at least one of the principal investigators should have attained his/her Ph.D., M.D. degree or equivalent, no more than ten years prior to submitting the proposal.

# Scholarships for ALL

## Searle Scholars Program

<http://www.searlescholars.net/go.php?id=5>

Deadline: September

The program invites applications from selected universities and research institutions. Awards of \$100,000 per year for three years support outstanding young scientists pursuing independent research careers in biochemistry, cell biology, genetics, immunology, neuroscience, pharmacology, and related areas in chemistry, medicine, and the biological sciences. Candidates should have begun their first appointment as an independent investigator at the assistant professor level on or after July 1 of the year prior to the application year.

US Department of Energy, National Renewable Energy Laboratory – Director’s Fellowships [http://www.nrel.gov/rpp/directors\\_fellowship.html](http://www.nrel.gov/rpp/directors_fellowship.html)

Complete application packages will be reviewed once per year: June through September 30.

The NREL Director's Fellowships are designed to attract the next generation of exceptionally qualified scientists and engineers with outstanding talent and credentials in renewable energy research and related disciplines. Candidates must be a recent PhD graduate (within two years of completion), and demonstrate a promising career of leadership and research.

Candidates will be selected based on eligibility, program expectations, and research proposals. Overriding consideration, when evaluating the application, will be the quality of the candidate. Successful candidates will serve a two-year term, with a possible third year renewal paid with program funding (maximum three-year appointments). The Director's Fellowship includes a premium salary rate, additional funding for conferences/presentations, competitive benefits package, and relocation (for moves greater than 50 miles from NREL).

DARPA Young Faculty Award [http://www.darpa.mil/Opportunities/Universities/Young\\_Faculty.aspx](http://www.darpa.mil/Opportunities/Universities/Young_Faculty.aspx)

Deadline: January

The objective of the DARPA Young Faculty Award (YFA) program is to identify and engage rising research stars in junior faculty positions at U.S. academic institutions and expose them to Department of Defense needs as well as DARPA's program development process.

The YFA program provides funding, mentoring, and industry and DoD contacts to awardees early in their careers so they may develop their research ideas in the context of DoD needs. The program focuses on untenured faculty, emphasizing those without prior DARPA funding. The long-term goal of the YFA program is to develop the next generation of academic scientists, engineers and mathematicians in key disciplines who will focus a significant portion of their career on DoD and national security issues.

# Scholarships for Sciences

NSF Ocean Sciences Research Initiation Grants (OCE-RIG) [http://www.nsf.gov/funding/pgm\\_summ.jsp?pims\\_id=504681](http://www.nsf.gov/funding/pgm_summ.jsp?pims_id=504681)

Deadline: January 15

The Division of Ocean Sciences (OCE) offers Research Initiation Grants in an effort to increase the participation of under-represented groups in the ocean sciences. Research Initiation Grants provide startup funding for researchers who have been recently appointed to tenure track (or equivalent) positions, with the twin goals of enhancing the development of their research careers and broadening the participation of under-represented groups in ocean sciences.

Whitehall Foundation – Grants-In-Aid <http://www.whitehall.org/grants/>

Deadlines: January 15, April 15, and October 1 for Letter of Intent

The Grants-in-Aid program is designed for biological scientist/researchers at the assistant professor level who experience difficulty in competing for research funds because they have not yet become firmly established. Grants-in-Aid can also be made to senior scientists. All applications will be judged on the scientific merit and innovative aspects of the proposal, as well as on past performance and evidence of the applicant's continued productivity. Grants-in-Aid are awarded for a one-year period and do not exceed \$30,000.

U.S.-Israel Binational Science Foundation – Start-Up Research Grant

<http://www.bsf.org.il/bsfpublic/DefaultPage1.aspx?PageId=23&innerTextID=23>

Since its inception, the BSF has awarded some \$480 million to over 4,000 research projects of the highest quality. Many of these have led to important scientific, medical and technological breakthroughs with wide-ranging practical applications. Projects must have a strong element of cooperation between an Israeli and an American scientist(s), and fall within the areas of research supported in that year by the BSF. In addition, at least one of the principal investigators should have attained his/her Ph.D., M.D. degree or equivalent, no more than ten years prior to submitting the proposal.

# Scholarships for Sciences

## Searle Scholars Program

<http://www.searlescholars.net/go.php?id=5>

Deadline: September

The program invites applications from selected universities and research institutions. Awards of \$100,000 per year for three years support outstanding young scientists pursuing independent research careers in biochemistry, cell biology, genetics, immunology, neuroscience, pharmacology, and related areas in chemistry, medicine, and the biological sciences. Candidates should have begun their first appointment as an independent investigator at the assistant professor level on or after July 1 of the year prior to the application year.

## International Life Science Institute (ILSI) North America – Future Leader Award

<http://www.ilsa.org/NorthAmerica/Pages/AwardPrograms.aspx>

Deadline: June

The ILSI North America Future Leader Award, given annually to promising nutrition and food scientists, allows new investigators the opportunity to add to an existing project or to conduct exploratory research that might not receive funding from other sources or add to an existing project. Consideration will be given to individuals proposing research in the areas of experimental nutrition, nutrition and toxicology, and nutrition and food science. Grants extend for a period of 2 years at a funding level of \$15,000 USD per year. Funds may not be used for overhead or to support the investigator's salary.



# Scholarships for Sciences

DARPA Young Faculty Award [http://www.darpa.mil/Opportunities/Universities/Young\\_Faculty.aspx](http://www.darpa.mil/Opportunities/Universities/Young_Faculty.aspx)

Deadline: January

The objective of the DARPA Young Faculty Award (YFA) program is to identify and engage rising research stars in junior faculty positions at U.S. academic institutions and expose them to Department of Defense needs as well as DARPA's program development process.

The YFA program provides funding, mentoring, and industry and DoD contacts to awardees early in their careers so they may develop their research ideas in the context of DoD needs. The program focuses on untenured faculty, emphasizing those without prior DARPA funding. The long-term goal of the YFA program is to develop the next generation of academic scientists, engineers and mathematicians in key disciplines who will focus a significant portion of their career on DoD and national security issues.

Department of Education, Institute of Education Sciences - Early Career Statistical and Research Methodology Grants  
[http://ies.ed.gov/funding/pdf/2015\\_84305D.pdf](http://ies.ed.gov/funding/pdf/2015_84305D.pdf)

Deadlines: Letter of Intent – June

Application – August

The Institute established the Early Career grants topic for applications from early career researchers in order to help them implement their research agendas. The Early Career topic is intended for applicants proposing high-quality work of the type discussed in the Background section, but that can be done over a shorter period and requires less funding..

The maximum award for a Statistical and Research Methodology project under the Early Career grants topic is \$200,000 (total cost = direct + indirect costs) over a maximum duration of 18 months.

# Scholarships for Sciences

American Political Science Association – Congressional Fellowship Program

[http://www.apsanet.org/content\\_3540.cfm](http://www.apsanet.org/content_3540.cfm)

Deadline: December

The purpose of this fellowship is to give early- to mid-career political scientists an opportunity to learn more about Congress and the legislative process through direct participation. A comprehensive orientation begins each year in November. Office assignments as full-time legislative aides in the House of Representatives and/or Senate run from December to August. Fellows receive a stipend of \$38,000, plus a small travel allowance.

Eligibility:

- U.S. citizenship or permanent U.S. residency;
- a Ph.D. completed within the last 15 years or a dissertation near completion (ABD); and
- a scholarly interest in Congress and the policymaking process

Department of Education, Institute of Education Sciences – Research Training Program in Special Education – Early Career Development and Mentoring  
[http://ies.ed.gov/funding/pdf/2015\\_84324B.pdf](http://ies.ed.gov/funding/pdf/2015_84324B.pdf)

Deadlines: Letter of Intent – June

Application – August

The Early Career Development and Mentoring Research Training (Early Career) Program supports grants that prepare researchers to conduct independent rigorous and relevant early intervention and special education research addressing issues that are important to infants, toddlers, children, and youth with or at risk for disabilities, their families, special education practitioners, and policymakers, and to contribute to the advancement of knowledge and theory in special education.

The maximum award for an Early Career award is \$400,000 (total cost = direct + indirect) over a maximum duration of four years.

# Scholarships for Sciences

Upjohn Institute for Employment Research -- Early Career Research Grants

<http://www.upjohninst.org/GrantsandAwards>

Deadline: January

The Upjohn Institute requests proposals for Early Career Research Grants (previously called Mini-Grants). These grants are intended to provide resources to junior faculty (untenured and within six years of earning their PhD) to carry out policy-related research on labor market issues. The Institute supports and encourages research on all issues related to labor markets and is especially interested in topics related to the recent recession and current recovery.

American Council of Learned Societies – Fellowships

<http://www.acls.org/programs/comps/>

Deadlines vary

Fellowships support research in all disciplines of the humanities and related social sciences. The ultimate goal of the project should be a major piece of scholarly work by the applicant. Awards provide up to \$35,000 for assistant professor-level investigators for six to twelve months of research.

# Scholarships for Sciences

## William T. Grant Foundation – Scholars Program

[http://www.wtgrantfoundation.org/funding\\_opportunities/fellowships/william\\_t\\_grant\\_scholars](http://www.wtgrantfoundation.org/funding_opportunities/fellowships/william_t_grant_scholars)

Deadline: July

The Scholars Program is for early-career researchers in the social, behavioral, and health sciences. The Foundation encourages Scholars to tackle important questions that will advance theory, policy, and practice for youth on any of three topics: 1) reducing inequality, 2) understanding the use of research evidence, and 3) understanding social settings. Applicants must have received their terminal degree within seven years of submitting their application

## Brain and Behavior Research Foundation

<http://bbrfoundation.org/yi>

Deadline: February

Offers up to \$30,000 per year for up to two years to enable promising investigators to either extend research fellowship training or begin careers as independent research faculty. Basic and/or clinical investigators are supported; research must be relevant to serious brain and behavior disorders such as schizophrenia, mood disorders, anxiety disorders, or child and adolescent mental illnesses.

# Scholarships for Sciences

American Council of Learned Societies – Fellowships

<http://www.acls.org/programs/comps/>

Deadlines vary

Fellowships support research in all disciplines of the humanities and related social sciences. The ultimate goal of the project should be a major piece of scholarly work by the applicant. Awards provide up to \$35,000 for assistant professor-level investigators for six to twelve months of research.

American Council of Learned Societies – Fellowships

<http://www.acls.org/programs/comps/>

Deadlines vary

Fellowships support research in all disciplines of the humanities and related social sciences. The ultimate goal of the project should be a major piece of scholarly work by the applicant. Awards provide up to \$35,000 for assistant professor-level investigators for six to twelve months of research.

# Scholarships for Sciences

## AbbVie Immunology Scholarship

Opening November 2018

The AbbVie Immunology Scholarship is designed to provide financial support for exceptional students living with chronic inflammatory diseases. Scholarships of up to \$15,000 each will be awarded, dependent upon type of degree pursued. Applicants must be legal residents of the U.S. and diagnosed by a healthcare professional with one of the following: ankylosing spondylitis (AS), Crohn's disease (CD), hidradenitis suppurativa (HS), juvenile idiopathic arthritis (JIA), psoriasis (Ps), psoriatic arthritis (PsA), rheumatoid arthritis (RA), ulcerative colitis (UC), or uveitis (UV). Qualified applicants must plan to enroll in undergraduate (associate's, bachelor's) or graduate (master's, MD, JD, doctorate) study at an accredited two- or four-year college, university or vocational-technical school in the U.S. for the entire upcoming academic year. Scholarships will be awarded based on academic excellence, community involvement, and ability to serve as a positive role model in the immunology community.

For more information, or to apply, visit <https://abbvieimmunologyscholarship.com/>

## Camille and Henry Dreyfus Foundation -- Teacher-Scholar Awards

[http://www.dreyfus.org/awards/camille\\_dreyfus\\_teacher\\_award.shtml](http://www.dreyfus.org/awards/camille_dreyfus_teacher_award.shtml)

Deadline: February

The Camille Dreyfus Teacher-Scholar Awards Program supports the research and teaching careers of talented young faculty in the chemical sciences. Based on institutional nominations, the program provides discretionary funding to faculty at an early stage in their careers. Criteria for selection include an independent body of scholarship attained within the first five years of their appointment as independent researchers, and a demonstrated commitment to education, signaling the promise of continuing outstanding contributions to both research and teaching. The Camille Dreyfus Teacher-Scholar Awards Program provides an unrestricted research grant of \$75,000. Institutions may make only one nomination annually for the Camille Dreyfus Teacher-Scholar Awards per deadline.

# Scholarships for ALL For NOW OR SOON!

## Arborjet Taking Root Scholarship Program

Opening May 2019

Arborjet has established its Taking Root Scholarship Program to encourage and enable bright and promising young students to fulfill their dreams of entering careers in the arboriculture industry. Scholarships are offered for students looking to pursue full-time studies in Forestry, Plant Sciences, Horticulture, Entomology, Environmental Science or a related major at an accredited two- or four-year college or university of the student's choice.

For more information, please visit <https://www.scholarsapply.org/arborjet/>

## Catch a Break! Scholarship

Opening November 2018

Application Area: Minnesota

The Catch a Break! Scholarship Program is offering scholarships up to \$10,000/year. The program is intended to enable recipients to graduate debt-free following four years of study. Applications are open to Minnesota residents who demonstrate academic potential and financial need and who plan on attending a four-year public college or university in Minnesota. For more information and to apply, please visit <https://www.scholarsapply.org/catchabreak/>

# Scholarships for ALL For NOW Or Soon

## Cognizant Accelerate Diversity Scholarship Program Opening Fall 2018

Cognizant's Accelerate Diversity scholarship program addresses the conundrum that, while the future has never looked brighter for STEM careers, there is evidence that these exciting careers are failing to attract broad segments of our population. This unique \$5,000 scholarship program is designed from a Cognizant perspective to identify and develop diverse talent for the Future of Work.

Current sophomores or juniors at accredited 4-year colleges are invited to apply, if they are enrolled as a STEM or Business major with a focus on pursuing a career in IT and related business services. Applicants must be citizens or legal permanent residents of the United States, and must be able to demonstrate commitment to the value of diversity.

To access the application and scholarship guidelines visit the Cory Richards Scholarship website. At:

[https://www.surveymonkey.com/survey-closed/?sm=cR7xAfL2me9OWdrGQ0mO\\_2B4S4yQcik8i\\_2BiqWc\\_2BWctaLW12\\_2FO2Qi5T1yLh\\_2BjUS\\_2FRt7LfaAGcrunZifDR4pQdseWrWQxPALmL63ZJ2\\_2FzCuzsHM\\_3D](https://www.surveymonkey.com/survey-closed/?sm=cR7xAfL2me9OWdrGQ0mO_2B4S4yQcik8i_2BiqWc_2BWctaLW12_2FO2Qi5T1yLh_2BjUS_2FRt7LfaAGcrunZifDR4pQdseWrWQxPALmL63ZJ2_2FzCuzsHM_3D)

## The Cory L. Richards Memorial Scholarship Program, Sponsored by the Guttmacher Institute Opening February 2019

The Cory L. Richards Memorial Scholarship Program is open to graduate students who are pursuing a Masters Degree in the field of Public Policy or Public Health and demonstrate a commitment to advancing public policy related to sexual and reproductive rights. Applicants must have a minimum grade point average of 3.0 on a 4.0 scale (or its equivalent) to apply.

One individual will be designated each year as a Cory Richards Scholar and awarded a one-time scholarship of \$15,000 to support full-time graduate study at an accredited institution in the United States. The individual will be selected based on academic performance, demonstrated leadership and participation in school and community activities, work experience, an essay, unusual personal or family circumstances, and an outside appraisal completed by a professor, advisor or mentor. Financial need will also be considered.

More information can be found at <https://www.guttmacher.org/cory-l-richards-memorial-scholarship>



# Scholarships for ALL For NOW Or Soon

## The Edwards Lifesciences Scholarship Program

Opening March 2019

Application Area: California, Utah, Puerto Rico

The Edwards Lifesciences Scholarship Program provides renewable \$2,500 awards for students pursuing a major in science, technology, engineering or math (STEM majors). Applicants must be United States citizens or legal residents who are high school seniors and residents of Orange County, CA; Salt Lake County, UT; or Puerto Rico. Recipients must demonstrate financial need. Children of Edwards Lifesciences employees are eligible to apply regardless of residence location, provided all other eligibility requirements are met.

Only the first 150 applications will be processed. More information is available at [www.scholarsapply.org/edwards/](http://www.scholarsapply.org/edwards/)

## Glancy Wine Education Fund

Opening October 2018

The Glancy Wine Education Fund provides scholarship awards up to \$5,000 to students in an eligible course of study at San Francisco Wine School. (Eligible courses of study include any full programs offered by San Francisco Wine School; excluded are WSET programs offered by Grape Experience and any other programs offered by 3rd parties.) To apply for a Glancy Wine Education Fund scholarship, students must enroll in an eligible course of study at San Francisco Wine School between January 1 and December 31, 2019, and must be 21 years or older on the day coursework begins.

To learn more, visit <https://www.scholarsapply.org/glancywineeducationscholarship>.

To support the Glancy Wine Education Fund, visit <https://sanfranciscowineschool.com/pages/scholarships>.

Donations are accepted year-round.

# Scholarships for Veterans

## Wells Fargo Veterans Emergency Grants

Opening January 2019

An unexpected financial setback can be a major disruption on the path to a degree. The Wells Fargo Veterans Emergency Grants are designed to help U.S. military veterans who are enrolled in postsecondary education meet their household expenses, ensuring that they are able to stay in school without creating undue financial hardship for themselves or their families.

[www.scholarsapply.org/wellsfargoveteransemergency](http://www.scholarsapply.org/wellsfargoveteransemergency)

The Wells Fargo Veterans Emergency Grant Program makes immediate grants available to eligible veterans who are pursuing a postsecondary degree and who experience financial difficulties.

One-time grants up to \$1,000 will be awarded on an ongoing basis while funds are available; grant amounts will be determined based on the cost of the emergency need. To learn more about eligibility and the application process,

[www.scholarsapply.org/wellsfargoveteransemergency](http://www.scholarsapply.org/wellsfargoveteransemergency)

## Wells Fargo Veterans Scholarship Program

Opening January 2019

Despite federal education benefits for veterans, unmet financial need often delays or derails academic progress. The Wells Fargo Veterans Scholarships will help fill financial aid gaps for veterans and the spouses of disabled veterans, after military benefits and other grants and scholarships have been utilized.

To apply, you must be an honorably discharged veteran of the United States military, or the spouse of a disabled veteran, and you must be a high school or GED graduate. The program will award renewable scholarships of up to \$7,000 per year, determined by financial need and consideration of academic performance, work experience, leadership, community service and challenges to completing a postsecondary program. The scholarships are renewable, and each year's awards will increase by \$1,000 to encourage program completion.

Visit [www.scholarsapply.org/wellsfargoveterans](http://www.scholarsapply.org/wellsfargoveterans) for more information and to apply.

## **LETTERS AND OTHER PAPERWORK**

The following letters are designed to assist you in all the ways I have found I needed.

If you find another, please let me know, or if you need assistance with another letter or one of these letters, please let me know.

# LETTER REQUESTING A LETTER OF RECOMMENDATION

Hello Dr. Marks,

I hope you and your family are doing well after that horrible storm and I already know you are enjoying your somewhat new position.

I have been keeping in touch with Andrew, and he has informed all of us here that all is well.

I am applying for entrance into the College of Education, under the Teaching and Learning Department, with a focus in International and Multicultural Education in Hospitality.

I have already interviewed with Dr. Chris Brown, and she has told me my entry into the program would be a great addition. In fact, I have already started taking courses in the program, one being one of her courses.

I would like to know if you would please give me a letter of recommendation for this doctoral program?

An email will come requesting the letter as soon as I finish my application if you are willing to give me your endorsement.

Thank you,

EP

# ***ALL LETTERS MUST HAVE THEIR DEPARTMENT'S LETTERHEAD ON THEM!***

Hello Dr. Marks,

I hope you and your family are doing well after that horrible storm and I already know you are enjoying your somewhat new position.

I have been keeping in touch with Andrew, and he has informed all of us here that all is well.

I am applying for entrance into the College of Education, under the Teaching and Learning Department, with a focus in International and Multicultural Education in Hospitality.

I have already interviewed with Dr. Chris Brown, and she has told me my entry into the program would be a great addition. In fact, I have already started taking courses in the program, one being one of her courses.

I would like to know if you would please give me a letter of recommendation for this doctoral program?

An email will come requesting the letter as soon as I finish my application if you are willing to give me your endorsement.

Thank you,

EP

# GENERAL LETTER RECOMMENDATION

To Whom it May Concern:

It is a pleasure to write this letter of recommendation for Mr. John Brown, even though doing so presents particular challenges. Often, the subject of these letters are gifted individuals deserving of recognition, but just as often, the letters extolling their virtues are somewhat hyperbolic. It is difficult to believe that any person could be all the things such letters claim. In Mr. Brown's case, everything in this letter is not only true, but it is, if anything, understated.

Without question, Mr. Brown is the single most conscientious, hard-working, driven, organized, disciplined, and enthusiastic student I have ever known. His thirst for knowledge is unquenchable. His passion for excellence is palpable. Meeting the minimum requirements of a task is not his style.

In his time in my Human Resource Management course as well as the Hospitality Information Technology Management course, he set the highest possible standards in every assignment, and he held himself entirely responsible for the achievement of his lofty goals. He welcomed constructive criticism and gratefully accepted and followed any advice I offered.

Mr. Brown's breadth of knowledge, gained through a short and yet impressive career in the financial community that introduced him to various parts of the industry, includes diversity and an appreciation of and respect for different cultures. The value his life experiences added to my classroom is inestimable. His insight, maturity, and good humor enhanced the work atmosphere for everyone, even those students who may have been initially intimidated by his commanding presence and pursuit of perfection. He was a role model and mentor to several other students whose final grades would have been less stellar if not for the help Mr. Brown gave them.

This letter only scratches the surface of the esteem I feel for this man. Mr. Brown leaves every situation better for having been a part of it, and any university would immediately reap the benefits of having him attend their institution. I would say the sky's the limit for this man, but that would be setting the bar too low.

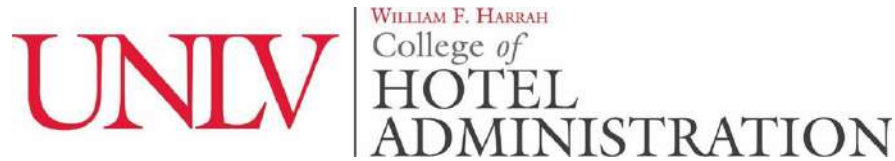
If there are any questions you would like me to address regarding Mr. Brown, please do not hesitate to contact me via e-mail at [SALLY.FIELDS@unlv.edu](mailto:SALLY.FIELDS@unlv.edu) or by telephone at (775) 500-1668.

Sincerely,

Sally Fields, Professor

# A LETTER OF RECOMMENDATION FOR A SPECIFIC PLACE

71



To Scholarship Committee for Harrah's Hotels,

I am pleased to write this letter of recommendation for Mr. Bill Williams; I have known Bill since Spring of 2016, when he enrolled in my class "Advanced Statistics for Hospitality & Leisure Services". I have come to know Bill quite well, since Bill used to come to me regularly for help with statistical concepts. He completed my statistics class with a grade of A. He is currently enrolled in my HOA 732 class (Advanced Statistics in R for Hospitality and Business) and is doing very well in this rather difficult class. Bill is very knowledgeable, works extremely hard, and he has a pleasant personality. I have no doubts in my mind that, with his motivation, academic background, and willingness to work hard, he would complete his Ph.D. and go on to have a successful career. Bill has my strongest possible recommendation.

If you have any additional questions, please feel free to contact me.

Sincerely yours,

4/10/2017

Frank Stein, Ph.D.

Professor, William F. Harrah College of Hotel Administration

P. 702.895.4843 F. 702.845.0391

Ashok.singh@unlv.edu

University of Nevada, Las Vegas, 4505 S. Maryland Pkwy., Las Vegas, NV 89154

# Question #1 letter

## Hardship letter

I am the product of a French mother and a Kenyan father (black), but a stepfather who was Swiss raised me. I grew up in the sixties and seventies not being accepted by either whites or blacks because I did not fit into either world and because it was a time of turmoil. I learned at a young age I was different and was made aware of that difference almost every day of my life for the first thirty years. I kept to myself as a youth but realized early on that everyone is equal and the same. I know I can give my life experiences to the youth and they will reap from my knowledge. I worked for Cunard Cruise line, both as a Chief Purser and a Valet, which improved my communication skills. I also trained in Germany as a hotelfachmann, which compounded my desire to be involved with youth. I joined the United States Marine Corps and served in a command position for years. The characteristics that would make me successful in a leadership position, service facilitator, community adviser, and of course being a person of diversity, all reinforce and support my determination, artistry, imagination, integrity, and professionalism. I am an articulate and thoughtful individual who possesses genuine curiosity for the process of learning. I am always engaged and attentive, so I serve as a model for others to emulate.

I have demonstrated a commitment to every endeavor, and never hesitated to provide support to my fellow students and my community. I had a successful record of managing complex organizations, supervising thousands of people through hundreds of line-management personnel, responsible for millions of dollars in assets. The redesigned comprehensive management training program, (regarded by superiors as the "most aggressive training program within the Brigade"), resulting in subordinates' excelling in all evaluated areas. Developed programs comprising 67 qualifications skills, 19 professional education subjects, and OJT training - leadership curriculum. Responsible for controlling the procurement of durable and expendable items under the budget. A recognized expert in planning and executing complex operations with 100% accuracy and success, including the scheduling and movement of thousands of personnel and the timely transfer of millions of dollars' worth of equipment to support and maintain operations.

I am always the leader whenever I am involved in a group project, mainly because I am always the oldest. I have been able to show others what it is to be able to give back to the community by teaching them about helping both our children and our seniors. I was able to gather a large number of fellow students for a food drive. We all went to our local food bank and distributed food and backpacks of school supplies. I taught them all the importance of giving back to the community, and the ripple effect will continue to affect the community. This act has inspired many of them to continue to both volunteer and give their time to the community and the food bank. I would delegate the various jobs that were involved with the projects to all of the people in the group and at times, I even had to resolve issues that arose within the group. I would resolve these issues by talking out the problem and not allowing the issues to fester. I know that people look to me for the answers and the knowledge that they have not experienced or have. I am a very calm and levelheaded person and can show people the path they need to take without leading them down it.



## Question #2 letter

***“What coursework have you taken that will support your future success, and how?”***

I have taken several courses in both my undergraduate and Masters programs that dealt with many aspects of management, leadership, finance, accounting, revenue management, operational management, and of course, different aspects of the service industry.

I also worked for a year at the Four Seasons of Las Vegas for the Director of Facilities as his assistant, which involved repairing and maintaining the entire property, at one of only two of the only five star spas in Las Vegas. This taught me how to find the various vendors, sales, and marketing people needed to run a spa of this size and level of service. I also discovered what is required when it comes to providing the proper service for people of this caliber, and at the level they expect.

I was also given the opportunity to visit eight other properties owned by the Four Seasons, three in Europe, and five within the United States. I saw the three in Europe because I was spending the summer in Prague, the Czech Republic in a Study Abroad Program. I saw the five here in the United States during the times I was traveling to various conventions throughout the United States. This was both a challenge and exciting, but it was an experience I will never forget.

### Question #3 letter

***“As part of a growing industry, how will you utilize your resources to enrich the industry?”***

I plan to invest a lot of my time in improving my own skill set and knowledge of the industry by attending the various conventions and conferences being held year round.

I am also interested in learning more about the multiple levels of service within the industry and being able to pass this information on to my students.

This is an industry that is not being utilized by the everyday American, and with the help of increasing need of more spas, maybe this will promote the need for programs with academia and also the hospitality industry.

Also, I can see how many of the gyms are now attaching spas to their property; with this happening, it will be much easier to promote the industry and maintain the programs within the academic system.

# Thank you letter #1

August 10, 2018

To Whom It May Concern:

Thank you for offering this scholarship and for giving me the opportunity to explain why awarding it to me would result in a positive return on your investment. I am eminently qualified to receive this scholarship because of my personal life experiences, aspirations, knowledge, drive, and qualifications.

I have returned to the post-secondary educational environment after a successful career with a desire to go on to fulfill my dream of being involved in the hospitality industry. The characteristics that would make me successful include determination, artistry, imagination, integrity, and professionalism. I am an articulate and thoughtful individual who possesses genuine curiosity for the process of learning. I am detail oriented, driven to excel, and always conscientious. I am always engaged and attentive, so I serve as a model for others to emulate. I demonstrated commitment in every endeavor, and never hesitated to provide support to my fellow students.

I also have the abilities of perception and compassion, which give me a great insight into people and their needs.

I am qualified to receive this scholarship because I want to graduate from UNLV with a Bachelor's and a Master's, and go on to work in the hospitality field. I passionately enjoy working with the public in the service industry, and would like to work in the Travel and Tourism industry, or in the Food and Beverage industry.

Again, I express my gratitude for offering me this generous scholarship and for considering my application for it.

Respectfully,

Beth Thomas

# Thank you letter #2

August 10, 2018

To the Scholarship Committee;

I was happy to learn I was the recipient of the Graduate Scholarship. I am writing to thank you for your generous financial support towards my higher education. When people are privileged enough to receive prestigious and generous gifts such as the Graduate Scholarship, they experience firsthand the difficulty of adequately putting into words the depth of their gratitude. They also face the daunting task of properly acknowledging those who helped make the scholarship possible. Allow me to begin by thanking American Hotel & Lodging Educational Foundation (AHLEF) for sponsoring the scholarship. I am humbled by your kindness and profoundly honored to be chosen for this scholarship.

My thanks also go to the many teachers, advisors, and mentors who have guided and encouraged me during every step of my educational adventure. It is accurate to say I would not have gone as far as I have with my education without any of them. Magnanimous gifts such as the Graduate Scholarship recognize and reward students for academic excellence that has often come about only after great personal sacrifice. I know whereof I speak!

Throughout my academic career, I have always endeavored to do my best, give my best, and be my best. By receiving this scholarship and also other scholarships from the AHLEF, I have been afforded the chance to improve my hospitality skills and broaden my academic skill set by attending the College Of Southern Nevada Restaurant Program and the University of Nevada, Las Vegas Hotel Management Program. The American Hotel & Lodging Educational Foundation has changed my life and the ones I love for the better. The American Hotel & Lodging Educational Foundation has given me the opportunity to attend conferences to learn about the new and innovative processes being used in industry and also about the constantly changing procedures or policies being implemented into the most creative industry in the world.

It is important to point out I would not have been able to attend or be a part of any of these activities or groups without the American Hotel & Lodging Educational Foundation, by having their constant support and belief in me, I have been able to give back to my community and grow. I hope in turn one day I will be able to give back and help struggling students achieve their goals in Higher Education by assisting them in the same way you have helped me. Being a student has been an utterly joyful experience for me, and to have my efforts so publicly recognized is, to use a culinary term, the icing on the cake!

Sincerely, Tom White

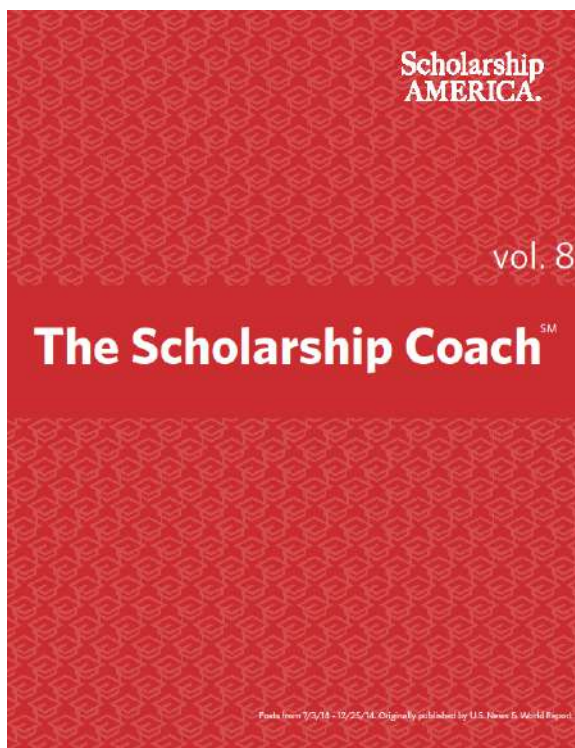
## *Links Used in Presentation*

- ▶ <http://unlvresearchmatch.unlv.edu/>
- ▶ <http://www.unlv.edu/research/proposal-development/funding>
- ▶ <http://www.unlv.edu/research/proposal/funding>
- ▶ <http://www.aascu.org/grc/gs>
- ▶ <http://www.bu.edu/swrnet/>
- ▶ <http://www.nsf.gov/funding/>
- ▶ <https://public.govdelivery.com/accounts/USED/subscribers/new?preferences=true>
- ▶ <http://nexus.od.nih.gov/all/subscribe/>
- ▶ [http://foundationcenter.org/newsletters/?utm\\_medium=email&utm\\_source=pnd&utm\\_campaign=pndrfp20150821](http://foundationcenter.org/newsletters/?utm_medium=email&utm_source=pnd&utm_campaign=pndrfp20150821)
- ▶ <http://www.grants.gov/web/grants/search-grants.html>
- ▶ <http://www.unlv.edu/research/osp-locating-funding-opportunities>
- ▶ <http://guides.library.unlv.edu/content.php?pid=42477&sid=312624>

# *My Student Organizations: best to have served in a leadership position at least once.*

- ▶ I am the Secretary for The Society for Human Resource Management (SHRM).
- ▶ I am the Vice President of the student chapter of the International Hospitality Information Technology Association (iHITA).
- ▶ I am member of the Network of Executive Women in Hospitality (NEWH).
- ▶ I am member of the American Hotel & Lodging Association (AH&LA).
- ▶ I am a member of Phi Theta Kappa Honor Society; College of Southern Nevada's chapter is Alpha Xi Beta.
- ▶ I am a student advisor for College of Southern Nevada's Food and Beverage Department.
- ▶ I am a member of the American Culinary Federation (ACF) and do a lot of volunteer work for our local chapter and National chapter (Chef for Kids).
- ▶ I am a member of International Food Service Executives Association (IFSEA).
- ▶ I was the IFSEA student Chapter President for the Las Vegas chapter for both UNLV and CSN.
- ▶ I am a member of the Graduate & Professional Student Association (GPSA).
- ▶ I am also a student volunteer for at Three Square, a local food bank.
- ▶ I am a member of the Buddy program here at UNLV.
- ▶ I am also a student note taker for the Disability Resource Center and Hard of Hearing Services for UNLV and CSN.
- ▶ I have been a volunteer the Big Brother Organization since 1981 and I have a child that I have been working with for the past four in a half years.
- ▶ I also received volunteer of the year for Las Vegas from President Obama for 2014 and 2015.
- ▶ I raised over \$12,000 dollars personally for an organization called "Goodie-two-shoes" for children in the need of shoes and school supplies. Our group total was over \$30,000 for the organization.

# Thank You!!!



- ▶ Finally, here is a link to a great tool to assist you in your pursuit of acquiring money for free that you will never have to pay back!
- ▶ <https://scholarshipamerica.org/wp-content/uploads/scholarship-coach-volume-8-2017.pdf>
- ▶ If you need to ask me anything or need assistance, please feel free to contact me.
- ▶ Eric or EP
- ▶ [Eric.Noonan@unlv.edu](mailto:Eric.Noonan@unlv.edu)
- ▶ 775-500-1135

# *Student Loan Forgiveness Programs by State*

- ▶ <https://lendedu.com/blog/student-loan-forgiveness-by-state/>
- ▶ <https://lendedu.com/blog/nevada-student-loan-forgiveness-programs/>
- ▶ <https://lendedu.com/blog/student-loan-forgiveness>