

GREENE COUNTY SCHOOLS

ROADMAP TO REOPENING

One Vision. One Voice. One Victory.

**CONTACT:
SUPERINTENDENT COREY L. JONES
AT 205.372.3109**

Please set an appointment before dropping by.
You can find us at:
220 Main Street
Eutaw, Alabama 35462

Greene County Schools – Roadmap to Reopening School Year 2020 – 2021

TABLE OF CONTENT

	Page
Disclaimer	3
Message from the Superintendent	4
Definition of Terms	5
Employee Protocol for Confirmed Positive COVID-19 Diagnosis	7
Employee Protocol for Risk of Contact Exposure	8
Student Protocol for Confirmed Positive COVID-19 Diagnosis	9
Student Protocol for Risk of Contact Exposure	10
ADHP Isolation and Quarantine Timeframes	11
Greene County Schools: Instructional Formats	12
Greene County Schools: Phased Reopening	14
Teaching and Learning Guidelines	16
Instructional and Technology Services	16
School Procedures	18
Schedules	18
Health, Wellness, Safety, and Prevention Guidelines	19
Child Nutrition Guidelines	20
Transportation Guidelines	21
Counseling	22
Social Emotional Learning (SEL)	22
Special Populations	22

Greene County Schools – Roadmap to Reopening School Year 2020 – 2021

Athletics and Extracurricular Programs and Activities	23
Career Technical Education	23
FAQS	25
Appendixes	33
Instructional Formats – One Pager	34
Phased Reopening – One Pager	35

Greene County Schools – Roadmap to Reopening School Year 2020 – 2021

Disclaimer

The information provided in this document does not and is not intended to constitute legal advice. Instead, information is for general purposes only and does not constitute the most current legal regulations. All liability with respect to action taken or not taken based on this document's contents are hereby disclaimed. The content in this document is provided "as is." No representations are made that the content is error-free. The document is not an exhaustive list of every action that Greene County Schools will need to return to school or to remain at school. We will follow the guidance of the Alabama Department of Education and hope to meet the needs of our community and be responsive to those needs.

Note: Due to the unpredictability of COVID-19, this plan is subject to change prior to the opening of school as well as while school is in session.

Greene County Schools – Roadmap to Reopening School Year 2020 – 2021

Message from the Superintendent

Greetings Greene County Families & Partners,

I want to take this time to thank everyone for their dedication and collaborative efforts as we diligently work to reopen schools for the 2020-2021 scholastic year. I am firmly committed to ensuring that schools are safe not only for our students, but, also for our staff members. I want to thank the Greene County Central Office staff, School Administrators, Community Leaders, Elected Officials, and other Greene County partners that have assisted us in the development of our plan for safely reopening schools.

I want to ensure our students, parents, district personnel, and community, that safety is paramount in reopening our schools. While I understand that this school year will be like none other, I am confident that this school term will show the resiliency and tenacity of our community to come together to ensure our students' educational, social, and emotional needs are met. Moreover, I firmly believe that we have the right staff in place to ensure that our students will have an innovative educational experience. As we begin this school term, I would like to inform our students, parents and the community that we will continuously strive to provide the best educational opportunity for our children in the safest environment possible.

Dr. Corey L. Jones, *Superintendent*

Greene County Schools – Roadmap to Reopening School Year 2020 – 2021

Definition of Terms

ACCESS – A distance learning (online) platform that may be utilized by traditional students enrolled in virtual courses.

ADPH – Alabama Department of Public Health.

Asymptomatic – Coronavirus carriers, or those who do not experience any symptoms.

Close contact: Being within approximately 6 feet (2 meters) of an individual with COVID-19 for at least 15 minutes. Close contact can occur while caring for, living with, visiting, or sharing a healthcare waiting area or room with an individual who has COVID-19.

Face covering – A cloth or disposable face covering that covers the nose and the mouth. Face coverings should follow the Greene County Schools' Code of Student Conduct as it relates to clothing.

Hand sanitizer – A liquid gel or foam that contain at least 60% alcohol and can be used with employees and students to safely clean hands.

Handwashing guidelines: Proper handwashing reduces the spread of COVID-19. Hands should be washed frequently with soap and water for at least 20 seconds. If soap and water are not readily available, use of a hand sanitizer that contains at least 60% alcohol is appropriate. Hand sanitizer should be applied to all surfaces of both hands and rubbed together until they feel dry. (CDC)

Higher risk populations: Individuals who are at a higher risk for developing severe illness from COVID-19 include: older adults age 65 and older, and people of any age with serious underlying conditions such as lung disease, heart disease, diabetes, or who are immunocompromised. (CDC)

Isolation – A process to keep someone who is sick or tested positive for COVID-19 without symptoms away from others, even in their own home.

Quarantine – a process to keep someone who was in close contact with someone who has COVID-19 away from others.

Remote Learning – This option would be provided by the classroom teacher and will be used in the event of school closure. Students who are in traditional classrooms will transition to digital learning using a virtual platform.

Greene County Schools – Roadmap to Reopening School Year 2020 – 2021

Symptomatic – Coronavirus carriers, or those who experience symptoms.

Schoology – Schoology is a social networking service and virtual learning environment for K-12 school and higher education institutions that allows users to create, manage, and share academic content.

Social Distancing: The act of remaining out of crowded public places where close contact with others may occur and maintaining a distance of at least 6 feet from others. (CDC)

Traditional Learning – This option would mean that students would attend school on-campus five days a week under the presumption that GCS would follow all state guidelines and protocols regarding safety, prevention, hygiene, and pandemic response procedures.

Underlying Conditions: Individuals with serious pre-existing medical conditions, as well as older adults, are more at risk of developing serious illness from COVID-19 than others. Serious underlying health conditions that make a person more at risk for developing severe illness include: chronic lung disease, moderate to severe asthma, heart disease with complications, hypertension, diabetes, BMI > 30, renal disease, liver disease, or those who are immunocompromised due to conditions such as receiving cancer treatment. (CDC)

Virtual Learning – This option would mean that students would receive ALL coursework and instruction online or in a virtual platform with little to no on-campus experience. This process would be different from the online/virtual experience that students received during the spring closure.

Vulnerable Populations – People of any age with certain underlying medical conditions.

Although Greene County Schools will begin instruction remotely, this plan outlines how remote learning, hybrid learning and virtual learning will look throughout the year.

Employee Protocol for Confirmed Positive COVID-19 Diagnosis

Symptomatic Confirmed Positive Diagnostic COVID-19 Test

Contact immediate supervisor as soon as possible to notify him/her of your condition.

Immediate isolation (Per CDC: Isolation is used to separate people infected with the virus (those who are sick with COVID19 and those with no symptoms) from people who are not infected.)

CDC: Isolate if You are Sick

An employee can return to work when the criteria below have been met:

- Twenty-four hours (24 hrs.) with no fever without the use of fever-reducing medication, and
 - Improvement of respiratory symptoms (e.g., cough, shortness of breath), and
 - Ten (10) days since symptoms first appeared and two consecutive, negative COVID19 tests administered at least 24 hours apart.
-
- Symptomatic patients who have not tested positive for COVID-19 and have a positive alternative diagnosis (e.g., positive for influenza) will return to work based on their confirmed diagnosis. If you meet any of the criteria above, you may take any available sick, personal, or vacation leave.
 - Employees are eligible for emergency paid sick leave under the Families First Coronavirus Response Act (FFCRA), although it is limited in duration and amount of compensation. Greene County Schools reserves the right to identify employees who could work remotely.

Asymptomatic Confirmed Positive Diagnostic COVID-19 Test

Contact immediate supervisor as soon as possible to notify him/her of your condition.

Greene County Schools – Roadmap to Reopening School Year 2020 – 2021

Immediate isolation (Per CDC: Isolation is used to separate people infected with the virus (those who are sick with COVID19 and those with no symptoms) from people who are not infected).

CDC: Isolate if You are Sick

An employee can return to work when the criteria below have been met:

- Two (2) consecutive, negative COVID-19 tests administered at least 24 hours apart. If an employee develops symptoms during the isolation period, then they must meet the return to work criteria for COVID-19 symptomatic patients. If you encounter any of the criteria above, you may take any available sick, personal, or vacation leave.
- Employees are eligible for emergency paid sick leave under the Families First Coronavirus Response Act (FFCRA), although it is limited in duration and amount of compensation. Employees are eligible for emergency paid leave under the FFCRA if they are caring for a child under the age of 18. Greene County Schools reserves the right to identify employees who could work remotely.

Employee Protocol for Risk of Contact Exposure

Asymptomatic Close Contact of COVID-19

Contact immediate supervisor as soon as possible to notify him/her of your condition.

Immediate quarantine (Per CDC: Quarantine is used to keep someone who might have been exposed to COVID-19 away from others. Quarantine helps prevent disease spread before a person knows they are sick or if they are infected with the virus without feeling symptoms. People in quarantine should stay home, separate themselves from others, monitor their health, and follow directions from their state or local health department.

CDC: Quarantine if You Might be Sick

- An employee can return to work when the criteria below has been met:
- Fourteen days (14) after the most recent exposure
- If symptoms develop, testing is required. One negative COVID-19 test is required before returning.
- Employees are eligible for emergency paid sick leave under the Families First Coronavirus Response Act (FFCRA), although it is limited in duration and amount of compensation. Employees are eligible for emergency

Greene County Schools – Roadmap to Reopening School Year 2020 – 2021

- paid leave under the FFRCA if they are caring for a child under the age of 18. Greene County Schools reserves the right to identify employees who could work remotely.

Student Protocol for Confirmed Positive Covid-19 Diagnosis

Symptomatic Confirmed Positive Diagnostic COVID-19 Test

Parents should notify school personnel as soon as possible about the student's condition. Immediate isolation (Per CDC: Isolation is used to separate people infected with the virus (those who are sick with COVID-19 and those with no symptoms) from people who are not infected.)

CDC: Isolate if You are Sick

A student can return to school when the criteria below have been met:

- Three (3) days with no fever without use using a fever-reducing medication, and Improvement of respiratory symptoms (e.g., cough, shortness of breath), and
- Ten (10) days since symptoms first appeared and two consecutive, negative COVID-19 tests administered at least 24 hours apart.
- Symptomatic patients who have not tested positive for COVID-19 and have a positive alternative diagnosis (e.g., positive for influenza) will return to school based on their confirmed diagnosis.

Absence will be coded as COVID-19 Quarantined Positive (Excused Absences)

Asymptomatic Confirmed Positive Diagnostic COVID-19 Test

Parents should notify school personnel as soon as possible about the student's condition.

Immediate isolation (Per CDC: Isolation is used to separate people infected with the virus (those who are sick with COVID-19 and those with no symptoms) from people who are not infected).

CDC: Isolate if You are Sick

A student can return to school when the criteria below have been met:

- Two (2) consecutive, negative COVID-19 tests administered at least 24 hours apart.
- If a student develops symptoms during an isolation period, they must meet the return to school criteria for COVID-19 symptomatic patients.

Greene County Schools – Roadmap to Reopening School Year 2020 – 2021

Absence will be coded as COVID-19 Quarantine Positive (Excused Absences)

Student Protocol for Risk of Contact Exposure

Asymptomatic Close Contact of COVID-19

Parents should notify school personnel as soon as possible about student's condition.

Immediate quarantine (Per CDC: Quarantine is used to keep someone who might have been exposed to COVID-19 away from others. Quarantine helps prevent disease spread before a person knows they are sick or if they are infected with the virus without feeling symptoms). People in quarantine should stay home, separate themselves from others, monitor their health, and follow directions from their state or local health department.

CDC: Quarantine if You Might be Sick

A student can return to school when the criteria below have been met:

- Fourteen days (14) after most recent exposure.
- If symptoms develop, testing is required. One negative COVID-19 test is required before returning.

Absence will be coded as COVID-19 Quarantine Positive (Excused Absences)

Special Education Students

- Students with an Individual Education Program who either test positive or are exposed to COVID-19 will receive instructional services, accommodations, and related services as determined by the IEP team until released to return to traditional school.
 - Confirmed Positive (With Symptoms) - Special Education: The IEP team will reconvene to determine services while the student is homebound due to symptomatic confirmed positive with COVID -19.
 - Confirmed Positive (Without Symptoms) - Special Education: The IEP team will reconvene to determine services while the student is homebound due to asymptomatic confirmed positive with Covid-1.

Alabama Department of Public Health (ADPH) Isolation and Quarantine Timeframes

Alabama Department of Public Health (ADPH) Isolation and Quarantine Timeframes for COVID-19 (Revised 07.21.2020)

If one comes in Close Contact with symptomatic persons with COVID-19, he or she:

- Must be isolated for at least 10* days after symptoms first appeared **and**
- At least 24 hours have passed since last fever (without the use of fever-reducing medications) **and**
- Symptoms have improved.

Symptoms may include any of the following: cough, shortness of breath, difficulty breathing, new olfactory disorder, new taste disorder, fever (measured or subjective), chills, rigors, myalgia, headache, sore throat, nausea/vomiting, diarrhea, fatigue, or congestion/runny nose.

** Severely immunocompromised or persons with severe illness may be infectious beyond the 10 days and should isolate for at least **20 days**. For these individuals, to end isolation early, 2 negative test results, collected more than 24 hours apart may be used.*

Cases who never developed symptoms may discontinue isolation 10 days after the collection

If one comes in Close Contact with asymptomatic persons with COVID-19, he or she:

Must be quarantined for 14 days after the last/most recent contact with the case when the case was infectious. Test results, whether negative viral test or positive antibody test, cannot shorten the 14 days. Contacts that share a room/living quarters (i.e., have ongoing contact with the case) should separate if possible, but otherwise will need to quarantine throughout the case's isolation plus an additional 14 days after case is released from isolation.

Instructional Formats

Greene County Schools is working to ensure that our parents and students have the best options for safe instruction in August. Below are tentative methods of instructional delivery. These methods may be adjusted at any time based on changes with COVID-19.

REMOTE

- Off-campus via designated Learning Management System (LMS)
- Lessons by GC Schools' Teachers
- Digital Learning Schedule
- Teaching Methods include:
 - ✓ Best practices for online teaching and learning
 - ✓ Traditional Instruction

Greene County Schools will be utilizing Schoology as its LMS

HYBRID

- Traditional and Remote blend
- Lessons by GC Schools'
- Teachers Off-campus, on-campus instruction combo
- Teaching Methods include:
 - ✓ Traditional Instruction
 - ✓ Best Practices for digital learning

For instances where the ADPH and the state of Alabama require operating schools at 50% capacity

TRADITIONAL

- Face-to-face, on-campus instruction
- Lessons by GC Schools' Teachers
- Regular school schedule
- Teaching Methods include:
 - ✓ Technology Integration
 - ✓ Standards-based Instruction
 - ✓ Tiered Instruction

VIRTUAL

- K-12 long-term pathway of online learning

Greene County Schools – Roadmap to Reopening School Year 2020 – 2021

- 100% Online instruction via ACCESS (7-12)
- Lessons by outside instructors
- Is not a traditional school environment
- Students must enroll for a nine-week period
- Monitored by GC Schools' Staff

Phased Reopening

PHASE I: REMOTE LEARNING

Aug. 20, 2020 – Oct. 16, 2020

Remote Learning Option:

- Students will engage in remote learning
- Meals will be curbside at specified locations
- Devices will be issued prior to August 20th
- Each school will conduct virtual parent/guardian and student orientation during the week of Aug 17th
- Internet connectivity will be provided for those students needing access

Virtual Option: Students have the option of enrolling in the district's Virtual Schools Program which utilizes outside instructors

PHASE II: HYBRID INSTRUCTION

Oct. 19, 2020 – Dec. 18, 2020

On-campus Option:

- Grades PreK-5 will attend school Monday - Thursday utilizing an A/B Split-day format; the A Group will come the first half of the day and the B Group will come the second half of the day for in-person instruction; Remote learning will take place the half of the day, either first or second, that students are not on campus
- Grades 6-12 will attend school on Monday – Thursday utilizing an A-Day (Monday & Wednesday)/B-Day (Tuesday & Thursday) Schedule. Students not scheduled for on-campus instruction will receive remote instruction.
- Fridays is remote learning for all students with a focus on Intervention or Acceleration

Virtual Option: Students have the option to remain in our district's Virtual Schools' Program

Greene County Schools – Roadmap to Reopening School Year 2020 – 2021

PHASE III: TRADITIONAL LEARNING

Jan. 5, 2021

- Campuses Reopen for all students for traditional instruction

ADDITIONAL INFORMATION

PLEASE NOTE

- The duration of each phase may change based on the COVID-19 Pandemic
- During Phase I and II, Fridays will be reserved for student Intervention and acceleration

Teaching and Learning Guidelines for Traditional Instruction

Standard Practice(s)

Implement standard operating procedures along with the following preventative measures:

- Provide hand sanitizer or hand soap for students/employees.
- Conduct cleaning of classrooms and high-touch surfaces daily.
- Limit sharing of items and other supplies.
- All students will follow the Board approved school year calendar.
- Establish an academic baseline:
 - Administer formative and benchmark assessments throughout the school year.
 - Monitor students' progress and academic plan throughout the school year (IEP, 504, RTI, GEP, IELP, etc.)
- Provide additional instructional supports to at-risk students.
- Conduct meetings (for staff, departments, special services, parent-teacher conferences, etc.) remotely when possible.

Instructional and Technology Services

Remote Learning

- Teachers will use Schoology to ensure that students have the most effective remote learning experience possible.
- Students will use technology devices and when necessary, a hotspot, for remote learning
- Virtual Parent/Student Orientation will be conducted at each school

Virtual Learning

- Parents who select this option will apply via the link available on the greene.k12.al.us.
- Students enrolled in Greene County Schools are assigned coursework that comes completely from a digital platform (Access) and is facilitated and assigned by Greene County Schools with limited support.
- Students enrolled in the virtual program will not attend the school in an on-campus manner.
- Enrollment application date: No later than August 20, 2020

Greene County Schools – Roadmap to Reopening School Year 2020 – 2021

- Students participating in the virtual program will receive a digital device, if needed, upon meeting all requirements and completion of the Digital Device Usage Agreement.
- Students will use the digital device to access the online instructional program.
- Students must abide by all policies and procedures when utilizing the digital devices.

Traditional Learning

- Due to the COVID-19 pandemic, traditional learning students may be required to transition to remote learning students not to be confused with virtual learning which is a separate program. Classroom teachers will be responsible for instruction (Schoology).
- All students will receive a digital device upon meeting all requirements and completion of the Digital Device Usage Agreement.
- Students will use the digital device to participate in learning at school and in the event of a transition to remote learning to access Schoology or another online platform.
- Students must abide by all policies and procedures when utilizing the digital devices.

School Procedures

Each School will have a plan for the following topics. However, typical guidance is as follows:

Morning Arrivals – Students will report to the designated areas. No congregating in groups.

Students Transitions – The local school will develop a transition plan based on their number of students and facility layout that ensures minimal contact with students from other classrooms.

Elementary Snack Time – Elementary students will have break within their classroom or in an assigned area outside the building maintaining social distance guidelines.

Middle and High School Transitions – The local school will develop a transition plan based on their number of students and facility layout that ensures minimal contact with students from other classrooms.

Assemblies – No Group larger than 50 percent capacity, given that social distancing guidelines and post assembly sanitation requirements are maintained.

Schedules

Standard Practice(s)

Elementary Schools

- Schedules will be created to minimize student movement within buildings. When possible, bring services or adults into homerooms (i.e. library lessons, art, music, etc.).
- Schedule bathroom breaks. Disinfect restrooms and check supplies before and after each class visit.

Middle Schools:

- Existing master schedules are likely to work with minimal modifications.
- Schedules will be created to minimize student movement within buildings. When possible, bring services or adults into homerooms (i.e. library lessons, art, music, etc.).

Greene County Schools – Roadmap to Reopening School Year 2020 – 2021

High Schools:

- Elective classes should meet in person with appropriate distancing protocols.
- Schools should develop advisory plans that avoid regrouping students beyond what daily schedules already require.
- Classes should be allowed to meet outside (without mixing with other classes) as possible.
- Schedules will be created to minimize student movement within buildings. Stagger arrival and dismissal times to avoid overcrowding in the hallway.

Health, Wellness, Safety, and Prevention Guidelines

Standard Practice(s)

Implement standard operating procedures along with the following preventative measures throughout the school day upon entering the building, while in classrooms, and during transitions:

- Teach and reinforce good hygiene measures such as handwashing, covering coughs, and face coverings.
- Provide hand soap or hand sanitizer with at least 60% alcohol, paper towels, and no-touch trash cans in all bathrooms, classrooms, and frequently trafficked areas.
- Provide hand sanitizing stations throughout buildings.
- Post signage to communicate COVID-19 information.
- Clean/disinfect frequently touched surfaces and shared objects after each use.
- Ensure ventilation systems operate properly and increase circulation of outdoor air as much as possible.
- Conduct deep cleaning of schools prior to returning; schedule periodic cleanings during weekends or school holidays/breaks (to the extent feasible).
- Require all employees and students to wear a face covering while inside the school buildings when unable to social distance or have protective barriers. (Per Governor Ivey's state order)
- Limit non-essential visitors and activities involving external groups or organizations.
- Limit unnecessary congregations of students and employees.
- Monitor arrival/dismissal to keep students moving to their destination.
- Follow protocols for students/employees who experience symptoms while at school.
- Visitors will remain in the lobby upon entering the building.

Greene County Schools – Roadmap to Reopening School Year 2020 – 2021

- Establish a protocol for student arrival/dismissal with staggered entry and release (by grade, class, or bus numbers) and social distance markings for pickup.
- Conduct additional cleaning of hallways and high-touch surfaces throughout the school day.
- Designate areas of the hallway (i.e. lanes) to walk to keep students separated (to the extent feasible).
- Provide additional time for class changes and other transitions throughout the school day.
- Plan staggered class changes (by hall, room numbers, grade, content) to decrease number of students in hallways at one time.
- Organize rooms for maximum social distancing.
- Utilize large spaces (gymnasiums, auditoriums, outside spaces – as weather permits) for distancing.
- Student desks should face the same direction.

Child Nutrition Guidelines

Standard Practice(s)

Implement standard operating procedures along with the following preventative measures:

- No visitors
- Provide hand sanitizer or hand soap for students and employees.
- Ensure all students/staff can wash hands before eating and after eating.
- Conduct cleaning of cafeterias and high-touch surfaces throughout the school day.
- Utilize Plexiglass shields or face shields, when possible, for cashiers.
- If serving in the cafeteria, follow serving models that promote distancing:
 - Serve meals in cafeterias with:
 - Serving lines marked on floors for social distancing.
 - Mark spaced lines on floors for distancing to enter the cafeteria; designate entrance and exit flow patterns; stagger use.
 - Adjusted meal periods for more staggered meal delivery.
 - Consider pre-packaged boxes or bags for each student instead of traditional serving lines.
 - Prohibit food and utensils sharing.
 - Utilize disposable plates and utensils.
 - Schedule a rotation of classes eating in the cafeteria.

Greene County Schools – Roadmap to Reopening School Year 2020 – 2021

- Occupancy in cafeterias will be reduced by:
 - Spaced seating
 - Rotating schedules
- Per health Department regulations, CNP staff will wear face coverings and gloves at all times when in contact with students and staff.
- Students who bring meals from home will need to pack items that do not require heating or reheating.
- Snacks and food items are limited to each child. No items may be brought from home for a class or group of students.

Transportation Guidelines

Standard Practice(s)

To safely and timely transport students to school in a manner that adheres to ADPH guidance and current best practices.

- The local school district has provided sanitizing equipment to each local school and will ensure that each bus is thoroughly sanitized by assigned personnel after each trip by an assigned employee.
- Students must wear face coverings on the bus.
- Upon entering the bus, students will apply hand sanitizer.
- Visible signage to communicate COVID-19 information.
- Students should face forward and not lean across seats.
- Eating on the bus is prohibited by federal and state regulations. (Exemptions will be granted for medical related situations.)
- All students will have an assigned seat. Consideration to students in the same household will be given priority.
- Roof hatches or windows will be open when possible to allow fresh air to circulate.
- Each bus driver will also be provided disinfectant for spot cleaning and sanitizing between routes.
- Each bus will have a quarantine seat for students who show symptoms during transition.
- Students who begin to show symptoms during transportation will be assigned a specific seat for the duration of the route. Upon arrival at the local school, the driver will communicate with the school administration and/or school nurse as to the observed or noted symptoms.
- Students will participate in non-contact, social distanced physical activities.
- Frequently disinfect and sanitize physical education equipment and spaces.

Greene County Schools – Roadmap to Reopening School Year 2020 – 2021

- Virtual opportunities for physical education will be available.
- Teachers will facilitate calisthenics and other engaging activities when possible.

Counseling

Standard Practice(s)

- Social distancing will be practiced at onsite traditional classrooms.
- Counselors will deliver classroom guidance lessons virtually or pre-taped lessons as needed to support social distancing.
- Develop means for students to electronically provide the counselor with how they are feeling.
- Deliver individual academic guidance and planning with students virtually as needed to support social distancing.
- Additional Counseling Resources will be derived from the American School Counseling Association

Social Emotional Learning (SEL)

Standard Practice(s)

- Provide resources for staff self-care.
- Provide professional learning for integrating Social Emotional Learning routines and activities into learning environments.
- Leverage staff to offer support ways that demonstrate empathy, respect, and curiosity about the child's learning and social-emotional needs.

Special Populations

Evaluation Services

- Referrals for Evaluations – Greene County Schools will continue to accept referrals for evaluations. All evaluations will be conducted in a timely manner with the safety and wellness of students and staff being a priority.
- Evaluations will for students enrolled in virtual school be conducted at the Greene County Board of Education in a designated area. Evaluations for students enrolled in traditional schools will be conducted at their school in a designated area. The designated area and materials utilized for evaluations will be sanitized after each use.
- Response to Instruction Services - RtI services will be offered by students before or during the evaluation timeline. RtI services will be offered and documented via Remote Learning for students who are not attending in a traditional setting. Work samples can be documented via Schoology.

Greene County Schools – Roadmap to Reopening School Year 2020 – 2021

- Special Education Teachers will provide individualized instruction to students who are not attending in a traditional setting via a teleconference platform based on the student's IEP goals. Work samples will be documented via Schoology.
- Students enrolled in the virtual setting will receive speech, OT, and PT services via teleconference.
- Virtual and Remote Accommodations and Modifications
- Students with disabilities will receive accommodations via Schoology, and teleconference.
- Students requiring modifications will receive services via Schoology and teleconference.

Athletics and Extracurricular Programs and Activities

Standard Practice(s)

- Practices and competitions follow AHSAA guidelines in all regards.
 - AHSAA Screening Document
 - AHSAA Athlete Coach Monitoring Document
- Spectators can attend events if social distancing guidelines are possible (Based on capacity guidelines and recommendations from Alabama Department of Health)
- Schools are advised to clearly indicate spacing expectations and guidelines.
- Face coverings recommended (Per Governor Ivey's state order)
- Concession sales will be limited to pre-packaged items.

Career Technical Education

Standard Practice(s)

- Teachers identify priority standards for course mastery, credentialing, CTE lab expectations.
- Students will travel to the Greene County Career Center daily for scheduled classes.
- The Career Center office will work to identify and address any needs that may be associated with CTE credentialing.
- Continuous partnership with local community colleges for dual tech courses.
-

Greene County Schools – Roadmap to Reopening School Year 2020 – 2021

- Instructors will be responsible for:
 - cleaning and sanitizing the lab and classroom workspace after utilization.
 - cleaning any equipment used by students after utilization.
 - documenting equipment and the workspace area used.

FAQs for GCS's Plan for Reopening Schools

Q: Will staff be trained in safety and wellness measures?

A: Yes. Staff members will be presented Standard Precaution Training as a preventative measure to support student knowledge on how to prevent the spreading of viruses and other airborne illnesses.

Staff will encourage handwashing and basic respiratory hygiene, such as covering the mouth when coughing.

Each school nurse will be a resource person for student educational activities, such as age-appropriate educational videos on hand-washing, covering one's mouth when coughing or sneezing, and how to wear a mask if needed.

Posters will also be made available for classrooms and school hallways.

Health tips regarding hygiene will be shared on social media and websites.

Q: What are the three steps in the COVID-19 screening process?

A: Parents (First Screening)

If a child has a pre-existing condition, parents are advised to speak with their child's primary care physician about returning to school. Parents will be encouraged to take students' temperatures and assess students before sending

them to school. Students who have an elevated temperature higher than 100°F and/or are exhibiting symptoms should stay at home. Parents will be encouraged to give appropriate contact information and make plans to ensure someone could check students out if needed.

Transportation (Second Screening)

Transportation is the second point on the screening continuum. Bus drivers, upon entrance to the bus, will visibly check for any symptoms or signs of COVID-19 or other visible illnesses. School systems will use clearly visible signage that will outline COVID-19 symptoms as an educational tool.

The school (Third Screening)

School is the final point on the screening continuum. School system staff will visually check for symptoms (which may include temperature checks and confirmation with families that the students are COVID-19 symptom-free).

Faculty will limit the items sent home with students that need to be returned. Items sent home will be sanitized as feasibly as possible.

Greene County Schools – Roadmap to Reopening School Year 2020 – 2021

Q: What will be the dress code for staff teaching remotely at the school buildings?

A: Staff can wear comfortable clothing that can be laundered daily in hot water. Teachers may not wear clothing or shoes that are made for sleeping or lounging at home.

Q: What will be the dress code for students and teachers when face-to-face classes resume?

A: Students and teachers can wear comfortable clothing that can be laundered daily in hot water. Students and teachers may not wear clothing or shoes that are made for sleeping or lounging at home.

Q: What are the expectations for student attendance during the 2020-2021 school year?

A: Students who attend traditional school will be expected to attend on a regular basis in accordance with the board-approved attendance policy. The local school administration will consider extenuating circumstances related to COVID-19.

If traditional school transitions to a remote learning environment, attendance will be taken through participation in the assigned remote learning activities. Remote students will utilize activity and participation through the remote learning curriculum as attendance.

Absent students should be timely when submitting a note for their absence to the school administrator per board policy. In the case of COVID-related absence, the student is strongly encouraged to notify the school administrator and promptly submit a physician's note to the school.

Q: Will visitors be allowed on campus for events such as eating lunch with students, walking students to class, etc.?

A: Visitors should have minimal access to the campus during the COVID-19 pandemic. This means that visitors will only be allowed in the lobby area of the school. Visitors will be unable to eat lunch with their children in the cafeteria or visit for other non-essential activities. While we strongly desire parent and community engagement, we will work to collaborate and engage our community and family partners in new and innovative ways.

Greene County Schools – Roadmap to Reopening School Year 2020 – 2021

Q: With the minimization of library book checkouts and the support of online literary options through a virtual online library, how will librarian's/media specialist support the classroom teachers?

A: Each school's media specialist/librarian will work closely with the school administrator to develop a schedule whereby they can support the literary engagement of students and classroom teachers while providing and incorporating engaging literature into the classrooms. The library media specialist will also support teachers and students by ensuring students/teachers have the proper login credentials when necessary.

Q: If a student or teacher tests positive for COVID-19, will the entire class be asked to quarantine?

A: If a student or employee tests positive, persons within that class setting will be notified to the greatest extent possible without revealing any confidential student information. Student information will remain confidential as required by law.

While it is possible the class may be required to quarantine, the class may not necessarily be required to quarantine. If a faculty member tests positive for COVID-19, he or she will notify a supervisor and follow the directions of a medical provider. Faculty members who test positive must obtain two negative COVID-19 test results before returning to work.

The ADPH has defined direct exposure as being in contact closer than 6 feet for more than 15 minutes. The local school administration will work closely with parents and students to be flexible and work with parents as it relates to individual exposure and school absences. However, based on consultation with the classroom teacher to identify any potential exposure location, duration of infection, etc., the school could potentially ask the classroom to quarantine and transition to remote learning.

Q: When can students return to school if they are sick?

A: Not all students that are sick will be diagnosed with COVID-19. Students that are diagnosed with COVID-19 may return to school with two negative tests result and after meeting with the school nurse the day prior to returning. As with any typically sick student, they are not to return to school until they are asymptomatic.

Greene County Schools – Roadmap to Reopening School Year 2020 – 2021

Q: Who will make decisions about whether the school will be opened or closed:

A: The decision to close a school(s) will be made in conjunction with the Public Health Department, Alabama Department of Education, and the local school district.

Q: Will students and teachers be required to wear masks?

A: All district employees are required to wear masks governed by the Alabama Health Order, as directed by Governor Kay Ivey. During times of transition outside of the classroom, masks will be worn by both students and teachers. Students may choose to wear their masks all day.

Q: Will students/teachers practice social distancing?

A: Teachers will maximize the distance between desks as much as possible. Unnecessary furniture should be removed from rooms to create more space between desks. Classrooms that utilize tables for student and group seating will need to evaluate their ability to distance students with the tables and discuss, in collaboration with their school administrator, the feasibility and availability of desks, dividers, etc. and their ability to use tables.

Desks will be in rows and columns facing the front of the room. Students will have assigned seats. At the secondary level, where students change classes, desks will be cleaned and sanitized at the end of each class. When possible, teachers will change rooms instead of students.

Q: Will classes be allowed to take field trips?

A: Currently, classes will not be allowed to take off-campus field trips. The updated guidance will be provided once field trips are deemed allowable.

Q: Will I be notified if a classmate of my child has tested positive for COVID-19?

A: It is the Alabama Department of Public Health's responsibility and duty to notify individuals of possible exposure to COVID-19. However, if a student or employee tests positive, persons within that class setting will be notified to the greatest extent possible without revealing any confidential information. Student and employee information will remain confidential as required by law.

Greene County Schools – Roadmap to Reopening School Year 2020 – 2021

Q: Will students eat in the lunchroom?

A: Students may not eat in the lunchroom on a particular day. However, principals may be able to schedule small groups with social distancing practices in place. Grab and Go lunches will be picked up from the cafeteria and eaten in the classroom. Food may not be dropped off from home.

Q: What is the State’s Virtual Learning Plan?

A: The State has purchased a remote learning program called SchoolsPLP for grades K-12, and the state still provides ACCESS for grades 7-12.

SchoolsPLP is a self-directed tutorial-type program. In SchoolsPLP, instruction is not delivered by our teachers. Some physical attendance will be necessary for taking the required State Assessments. Students are still enrolled in the Greene County Schools and may participate in extracurricular after school activities. However, students enrolled in SchoolsPLP will not attend the Greene County Career Center for their course work, as many of the technical classes are offered virtually. The course work is rigorous and timelines must be adhered to. Assignments are to be completed daily and attendance is taken.

The state is still providing ACCESS for students in grades 9-12. A teacher is assigned to teach the class remotely (not a GCS employee) and the teacher is available for instructional assistance. Students are still enrolled in Greene County Schools and may participate in after school extracurricular activities.

Q: How will attendance be taken during remote learning?

A: Attendance will be taken daily by teachers as students log into the remote learning platform Schoology.

Q: How will attendance be taken through SchoolsPLP and/or ACCESS (remote learning)?

A: Attendance through SchoolsPLP will be taken through daily participation in the assigned remote learning activities through the remote learning curriculum as attendance. ACCESS attendance will be taken through completed work assignments.

Q: If a student chooses the Virtual learning option, can the student later choose the traditional option?

Greene County Schools – Roadmap to Reopening School Year 2020 – 2021

A: Once school starts, students may return to school at the end of any nine-week grading period. Students who wish to return to the traditional setting must give notice to the school by the progress report date.

Q: What can staff and students do to prevent the spread of COVID-19?

A: Take everyday preventive actions to prevent the spread of respiratory illnesses. These actions include staying home when sick; appropriately covering coughs and sneezes; cleaning and disinfecting frequently touched surfaces; and washing hands often with soap and water. If soap and water are not readily available, use an alcohol-based hand sanitizer with at least 60% alcohol. Always wash hands with soap and water if they are visibly dirty. Remember to supervise young children when they use hand sanitizer to prevent swallowing alcohol.

Q: Are students participating in the virtual option still required to take state assessments?

A: Yes, all state assessments are required. When possible, physical attendance at school will be required during testing times. For grades K-3, the Alabama Literacy Act requirements are still in effect and will be followed.

Q: If the school closes and teachers transition to remote learning, can teachers still come to the school to work?

A: Remote learning will occur should the school be closed for two or more weeks. We hope that teachers will be able to use classroom resources to teach, but health orders and the spread of COVID-19 will determine access to the school. If we transition to blended learning, further information will be shared.

Q: Will teachers be responsible for cleaning or sanitizing classrooms?

A: Teachers should support the school's cleanliness for the safety and health of all staff and students and follow the principal's directions for specific instructions. Cleaning supplies will be provided.

Q: Do employees have to wear a mask?

A: Teachers and students will wear masks when feasible. Educators are under the Public Health Order that states, "employees will wear masks as feasible." Masks should be worn in hallways and when going to classrooms. The required use of masks will be governed by the Alabama Health Order, as directed by Governor Kay Ivey and other applicable laws.

Greene County Schools – Roadmap to Reopening School Year 2020 – 2021

Q: Will teachers be expected to rearrange the desks to maintain six feet of distance between all students?

A: Teachers should maximize the distance between desks as much as possible. Unnecessary furniture should be removed from rooms to create more space between desks. Classrooms that utilize tables for student and group seating will need to evaluate their ability to distance students with the tables and discuss, in collaboration with their school administrator, about the feasibility and availability of desks, dividers, etc., and their ability to use tables. Administrators should work with teachers to remove flexible seating options that do not allow for social distancing.

Q: How will the school system identify and address learning gaps created by the March-May 2020 school closure?

A: Teachers are expected to provide formative assessments during the first week of school to all students. Teachers will collaborate with fellow teachers, instructional coaches, and administrators to plan for addressing the gaps in learning.

Q: What will determine if a return to remote learning is necessary during the school year?

A: Currently, decisions will be made regarding the transition from traditional learning to remote learning as a local decision based on consultation and guidance from ADPH, ALSDE, and CDC. We have asked the state to provide a percentage or number of absences for students or staff to determine when to close the school. They have not provided any direction at this time.

Q: My classroom uses mostly hands-on materials and equipment. How should I adjust my activities to ensure proper learning takes place while ensuring student safety?

A: We always have and will continue to encourage students to participate in their learning actively. However, due diligence must be made in the current pandemic climate to ensure items are sanitized before used or passed among and between students.

Greene County Schools – Roadmap to Reopening School Year 2020 – 2021

Q: Are children more at-risk?

A: Information about COVID-19 in children is somewhat limited, but the information that is available suggests that healthy children generally have mild symptoms. However, a small percentage of children have been reported to have more severe illness. Children and adults with serious chronic medical conditions are believed to be at higher risk, as well as older adults. To protect those at higher risk, it's important that everyone practices healthy hygiene behaviors.

Appendix

Greene County Schools – Roadmap to Reopening School Year 2020 – 2021

VISIT GREENE.K12.AL.US FOR UPDATES

INSTRUCTIONAL FORMATS GREENE COUNTY SCHOOLS

Greene County Schools is working to ensure that our parents and students have the best options for safe instruction in August. Below are tentative methods of instructional delivery. These methods may be adjusted at any time based on changes with COVID 19.



TRADITIONAL

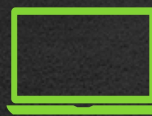
- Face-to-face, on-campus instruction
- Lessons by GC Schools' Teachers
- Regular school schedule
- Teaching Methods include:
 - Technology Integration
 - Standards-based Instruction
 - Tiered Instruction



REMOTE

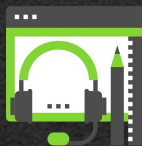
- Off-campus via designated Learning Management System (LMS)
- Lessons by GC Schools' Teachers
- Digital Learning Schedule
- Teaching Methods include:
 - Best practices for online teaching and learning
 - Traditional Instruction

Greene County Schools will be utilizing Schoology or Google Classroom as its LMS



VIRTUAL

- K-12 long-term pathway of online learning
- 100% Online instruction via SchoolsPLP (K-6) and ACCESS (7-12)
- Lessons by **outside instructors**
- Is not a traditional school environment
- Students must enroll for **one full academic year**
- Monitored by GC Schools' Staff



HYBRID

- Traditional and Remote blend
- Lessons by GC Schools' Teachers
- Off-campus, on-campus instruction combo
- Teaching Methods include:
 - Traditional Instruction
 - Best Practices for digital learning

For instances where the ADPH and the state of Alabama require operating schools at 50% capacity

Parents will have the option to choose a **traditional**, **remote** or **virtual**. Registration for Virtual Instruction is done on our website. Please note the difference between Virtual and Remote Learning. While both are monitored by the Greene County School System, Remote Learning is the only virtual option conducted by teachers in the GC School System. Once you register for Virtual Learning, you will have a five (5) day grace period to opt out.

Register for Virtual Learning online at greene.k12.al.us

Greene County Schools – Roadmap to Reopening School Year 2020 – 2021

GREENE COUNTY SCHOOLS

PHASED REOPENING



PHASE I: REMOTE LEARNING

AUG. 20, 2020 - OCT. 16, 2020

Remote Learning Option:

- Students will engage in remote learning
- Meals will be curbside in specified locations
- Devices will be issued prior to August 20th
- Each school will conduct virtual parent/guardian and student orientation during the week of Aug 17th
- Internet connectivity will be provided for those students needing access

Virtual Option: Students have the option of enrolling in the district's Virtual Schools Program which utilizes outside instructors



PHASE II: HYBRID INSTRUCTION

OCT. 19, 2020 - DEC. 18, 2020

On-campus Option:

- Grades PreK-5 will attend school Monday - Thursday utilizing an A/B Split-day format; the A Group will come the first half of the day and the B Group will come the second half of the day for in-person instruction; Remote learning will take place the half of the day, either first or second, that students are not on campus
- Grades 6-12 will attend school on Monday -Thursday utilizing an A-Day (Monday & Wednesday)/B-Day (Tuesday & Thursday) Schedule. Students not scheduled for on-campus instruction will receive remote instruction.
- Fridays is remote learning for all students with a focus on Intervention or Acceleration.

Virtual Option: Students have the option to remain in our district's Virtual Schools' Program



PHASE III: TRADITIONAL LEARNING

JAN. 5, 2021

- Campuses Reopen for all students for traditional instruction



ADDITIONAL INFORMATION

PLEASE NOTE

- The duration of each phase may change based on the COVID 19 Pandemic
- During Phases I and II, Fridays will be reserved for student Intervention and acceleration

FOR MORE INFORMATION, VISIT OUR WEBSITE AT
WWW.GREENE.K12.AL.US