

PALESTINE-WHEATLEY REPORT TO THE PUBLIC
MONDAY, OCTOBER 11, 2021

- I. The meeting was called to order and guests welcomed by Derrick Boileau, President.
- II. Establish a Quorum-Roll call: Shane Clifton-present, Micah Hilsdon-present, Blaine McCoy-absent, Jamie McCoy-absent, Jared Parker-absent, Vernon Thweatt-present, and Derrick Boileau-present. A quorum was established.
- III. Report
 - A. Elementary School Report was given by Kristi Wilson, Principal.
 - B. GT District Report was given by Emily Medford, GT Coordinator.
 - C. High School Report was given by Randy Cannon, Principal.
 - D. Facilities Report was given by Jon Estes, Superintendent.
 1. Resolution for Local Support of 2022 Facilities Master Plan-A motion was made by Shane Clifton and seconded by Vernon Thweatt to approve the following Resolution: 'Be it Resolved that the Palestine-Wheatley School Board has voted to dedicate local resources to meet the school district's share of financial participation in approved new construction projects listed on the district Facilities Master Plan.' Roll call: Shane Clifton-yes, Micah Hilsdon-yes, Vernon Thweatt-yes, and Derrick Boileau-yes. Motion carried 4 to 0.
 - E. District Report was given by Jon Estes, Superintendent.
 - F. Nurses Report was given by Jon Estes, Superintendent.
- IV. Adjournment-A motion was made by Vernon Thweatt and seconded by Shane Clifton to adjourn this meeting. All rose in favor.



Vernon Thweatt, Secretary

Palestine-Wheatley Elementary

Grades K-6

Annual Report to the Public

October 11, 2021

Palestine-Wheatley Elementary encompasses grades kindergarten through 6th grade with a total of 439 students. We employ 28 teachers, all of which are highly qualified. We hired five new teachers for the 2021-2022 school year. We have 2 instructional assistants to assist with special education, Dyslexia, interventions and to oversee the computer lab. We have one counselor, a secretary, two custodians and a district technology coordinator.

Special Education teachers are Mary Oltmann (grades K-4) and Fannie Evans (grades 5-6). Combined, they serve 33 students in indirect and resource room settings. We have 28 students in our gifted and talented program. Mrs. Medford works with grades 3rd & 4th by pulling them into the GT classroom. Grades K-2nd and 5th & 6th are served through their classroom teachers with enrichment type activities. Mrs. Medford is also responsible for overseeing our district's Dyslexia program. Karen McGuirt is our literacy specialist. She is responsible for assisting teachers and students with literacy interventions in an effort to raise test scores.

Our focus for the 2021-22 school year is to raise our achievement focusing on student attendance and test scores with an emphasis on literacy. One struggle we continue to face includes the academic performance of school choice students and the gaps that exist because

of their previous academic experiences in mostly private school districts. We have blocked off the first two hours of our instructional day for support staff to provide students with literacy interventions for those in need of support. We have recently purchased an intervention program called 95% Group. We have begun full implementation of this program. This will provide our students with reading interventions and help bridge the gap from lost time with in-person learning. We will provide after-school tutoring for students who need support in academic areas of reading and math.

Palestine-Wheatley Elementary has made many adjustments and modifications in order to safely serve and teach our students during the COVID pandemic. Our students are encouraged to wear masks daily as well as our employees. Hand sanitizing stations have been placed at different points in the building for student access.

GT Annual Report to the Public
October 11, 2021

In the 2020-2021 school year we had 106 students being serviced as Gifted and Talented. We currently have 94 students identified as Gifted and Talented in grades 3-12 for the 2021-2022 school year.

Grades K-2nd:

All K-2 classes receive whole group enrichment once a week by the GT teacher. These enrichment lessons last 30 minutes and are centered around logical reasoning and creative thinking skills. At the end of 2nd grade, students are eligible for formal identification and placement into the gifted program.

Grades 3rd -4th:

In grades 3-4, identified gifted students are serviced through a pullout program. They are excused from the regular classroom one day a week for a total of 150 minutes to attend GT classes. During this time, the students participate in many activities including weekly inventions or challenges, class newspapers, contests and research. The GT curriculum is centered around thinking skills being taught rather than just the acquisition of knowledge itself. Students are given opportunities to use critical and creative thinking and to use both logic and creativity to solve problems. The GT fair this year is focused on creative problem solving. This gives the students the opportunity to approach a problem or challenge in an imaginative or innovative way. The students also work to build leadership abilities and to provide opportunities to study in individual areas of interest. Fourth, fifth and sixth grade students are given the opportunity to participate in Elementary Quiz Bowl.

Grades 5th -8th:

GT services at this level are provided through secondary content classes. The classroom teacher has been trained to provide activities of differentiation to challenge these students. This differentiation includes study skills, leadership skills, intrapersonal skills, interpersonal skills and decision-making skills. Documentation is submitted to the GT teacher each nine-week grading period. Several of these students are enrolled in the Duke TIP Talent Search sponsored by Duke University. This program allows eligible students based on standardized testing scores, the opportunity to take the ACT or SAT to give greater insight of college entrance exams.

Grades 9th -12th:

GT students in grades 9-12 are placed into Pre-Ap or Advanced placement classes. Advanced placement classes are part of a nationwide program designed to set high standards for high school students and to allow them to be better prepared for college. 21 of these gifted students are also receiving concurrent college credit through East Arkansas Community College.

Nominations for the Gifted Program will be taken throughout the year and testing will begin in early spring.

Yearly surveys and evaluations are given at the end of the school year for suggestions to improve the GT program. The GT Advisory Committee meets annually to discuss these improvements and suggestions to help better the GT Program at Palestine-Wheatley.

Emily Medford
GT Coordinator/Teacher

Palestine-Wheatley High School
Grades 7-12
Report to the Public
October 11, 2021

Palestine-Wheatley High School is a 7-12 grade high school with three hundred forty students. We have one foreign exchange student from South Korea. We employ twenty four teachers, all of which are highly qualified. We have one instructional aide in ISS and one in special services. We have two counselors, one shared district technology coordinator, one secretary, one nurse, and two custodians.

Special Education teachers are Annette Ivory (grades 9-12) and Fannie Evans (grades 7-8). Combined, they serve 54 students (15%) in indirect and resource room settings. We have 66 students in our gifted and talented program (18%). Emily Medford works with our teachers to provide services for our G/T students. Demographics show 87% of our students are white, 11% are black, and 2% are Hispanic. After school tutoring is provided on an as needed basis. Our graduation rate is 85%.

We have 43 students attending EACC classes, of these, seven are in the secondary education classes. These 43 students are taking upwards of 100 classes, some online and some in classes taught on our campus. EACC furnishes teachers to teach these classes on our campus. This year English Composition I, English Composition II, American History, College Algebra and Physical Science are being taught on our campus. We have an additional 45 students taking various online classes through Virtual Arkansas.

Technology is readily available to all students in our school. We use computers, chrome books, and I pads to fulfill our technological needs. Much of our testing is being done online rather than on paper. Our

teachers also have access to the latest technology in their classrooms. The Department of Education has mandated schools to provide offerings for online classes in high schools to prepare students to take online college classes. Students are required to take at least one online class before they graduate. We have continually increased our offerings of online high school classes to our students.

Covid is still a concern for teachers and students. Currently we have only three students and one teacher quarantined. We have Google Classroom in place for those students that have been quarantined.

State testing is through the ACT Aspire Assessment. This test is taken online by all students in grades 7-10 in the high school. (Our eleventh graders take the regular ACT test) We have taken the ACT Aspire test for the last few years. Although we still need improvement in our test scores, we were by far the best scoring school in our Coop area. We implemented interventions, including mandatory tutoring, use of a literacy specialist and a science specialist, and specific curriculum and teaching methods to help our students achieve more success on the test. We improved our scores in nearly every area of the test. We are not nearly finished with this endeavor but we are moving in the right direction. Emphasis has been placed on raising the scores on this test.

We have several new teachers this year and everyone has fit in well with our existing staff. We attribute our student's progress to the quality of the teachers and support staff that we have at Palestine-Wheatley High School. They keep their students engaged in learning within their classrooms and everyone is eager to do whatever it takes to improve student success.

2020-2021 ACT ASPIRE Preliminary SCORES Grades 7-10 (July 14) Percentage That Meet Readiness

<u>School District</u>	<u>English</u>	<u>Math</u>	<u>Science</u>	<u>Reading</u>
<u>PWHS</u>				
Grade 7	78.6	25	30	35.7
Grade 8	76.2	27	50.8	60.9
Grade 9	65.5	20.7	24.1	31
Grade 10	48.1	11.5	11.5	21
<u>Lee County</u>				
Grade 7	5	5.7	3.5	9.3
Grade 8	36	0	0	13.5
Grade 9	34	2.4	11.4	9.5
Grade 10	12.9	0	3.4	6.7
<u>Marvell</u>				
Grade 7	33	0	0	0
Grade 8	46	0	3.8	15.4
Grade 9	28	0	0	7.7
Grade 10	12	0	3.2	3.2
<u>Brinkley</u>				
Grade	75	7.1	10.7	7.1
Grade 8	55.9	11.8	11.8	35.5
Grade 9	27.6	7.1	10.3	10.3
Grade 10	32.3	12.9	19.4	22.6
<u>Barton</u>				
Grade 7	59.7	23.6	18.1	23.6
Grade 8	51.9	37	16.7	29.6
Grade 9	38.6	15.8	21.4	12.5
Grade 10	42.9	3.6	10.7	7.3

School District English Math Science Reading

Clarendon

Grade 7	64.5	3.3	22.6	22.6
Grade 8	52.8	13.2	21.1	31.6
Grade 9	37	3.6	14.3	22.2
Grade 10	47.2	5.4	13.5	33.3

Cross County

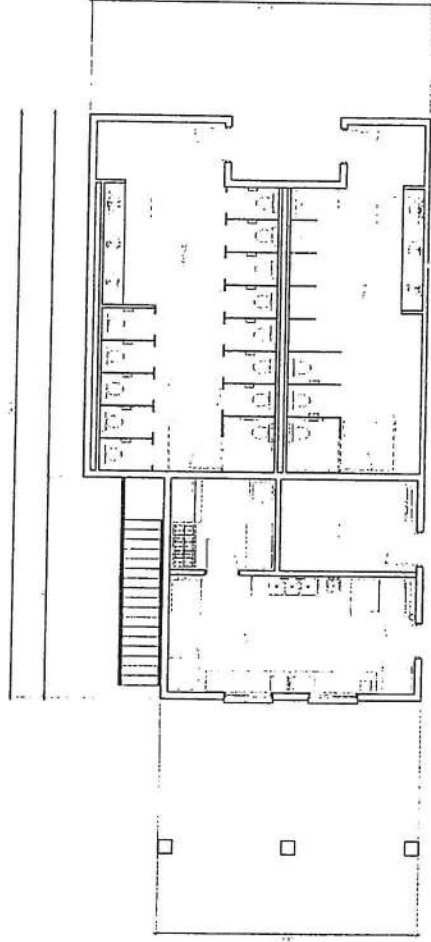
Grade 7	83.3	53.3	51.7	41.7
Grade 8	80	45.5	54.5	57.8
Grade 9	60.4	29.2	35.4	47.0
Grade 10	50	12.5	25	42.5

Drew Central

Grade 7	55.3	11.8	17.1	22.4
Grade 8	61.8	24.7	31.2	42.3
Grade 9	47.6	15.9	25.4	30.2
Grade 10	53.1	11.1	19.8	27.2

Palestine-Wheatley School District
Facilities Report
October 11, 2021

- Basically, our six year plan consist of finishing the athletic facilities under way with no new major construction planned after that.
- Jeremy Stone sent me the layout for the concession stand/rest room for the football field and I told him that I would prefer a single building like Carlisle that would house the field house, weight room, concession stands and rest rooms. He's working on getting me something new.
- Bids for the fences for baseball and softball have been advertised and will be open later this month. Fencing will be about a two month job. I am afraid the bids will come in too high and we'll have to do it in house.
- We are opening bids Thursday at 1:45 on parking lot and site work additions around the fields.
- We are deciding tonight if on purchasing stadium bleachers and a press box.
- We are working to get prices on scoreboards.
- We will have other projects come up for sure, I will keep you posted on all problems and progress.



1 PLAN

PALESTINE/WHEATLEY
HIGH SCHOOL FOOTBALL FIELD
CONCESSIONS/RESTROOMS

BUILDING PLAN

A1.1

**RESOLUTION FOR LOCAL SUPPORT OF
2022 FACILITIES MASTER PLAN**

WHEREAS the Palestine-Wheatley School Board has reviewed and voted yes to fully support the School District's 2022 Facilities Master Plan; and

WHEREAS the Palestine-Wheatley School Board understands that the Arkansas Division of Public School Academic Facilities & Transportation must approve said 2022 Facilities Master Plans; and

WHEREAS the Palestine-Wheatley School Board understands that when Facilities Master Plans, Partnership applications, and/or Catastrophic project applications are approved, the Academic Facilities Division through the legislative appropriations, may participate in the construction of academic facilities at the state computed wealth index, as funding permits,

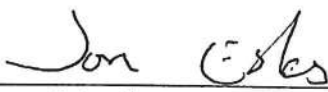
BE IT RESOLVED that the Palestine-Wheatley School Board has voted to dedicate local resources to meet the school district's share of financial participation in approved new construction projects listed on the district Facilities Master Plan.

Does the board intend to seek elector approval to fund local share of any proposed project(s):

<input type="checkbox"/>	FUTURE (if yes, provide approximate date _____)
<input type="checkbox"/>	PAST (if yes, provide approximate date _____)
<input checked="" type="checkbox"/>	NO

Does the board intend to dedicate other local resources to fund local share of any proposed project(s):

<input checked="" type="checkbox"/>	YES (if yes, provide approximate date <u>Summer 2022</u>)
<input type="checkbox"/>	NO



Superintendent



School Board President



School Board Secretary

10/11/21

Date

2021-2022 Annual Report to the Public
October 11, 2021
Palestine-Wheatley School District

- Palestine-Wheatley School District is in good standing with the State Dept of Education, we are not on any sort of probationary status at this time.
- Our October 1 enrollment numbers were 780 students, which is up 1 student from last year's enrollment count of 779 yet down 30 from four years ago. This is pretty remarkable considering St Francis County has lost 18% of it's population since the 2010 census. Just to put that in perspective, our co-op area lost 913 students over the last two school years.
- Bullying: Last school year, we had for instances of bullying with two instances resulting in corporal punishment while the other two received out of school suspension.
- Our current 3 year average for 9-11 grade students is 181.67. The AAA uses a three year average of 9-11 for classifications. We currently compete in the 3A classification for all sports but beginning next school year, we will return to 2A in all sports besides football- which will remain 3A.
- We are currently operating 2 schools with 2 LEA numbers. We operate a K-6 for Elementary and a 7-12 high school.
- Our district's finances are on sound financial footing since we have reversed the trend of declining balances. We have built up good reserves that we hope will offset the need for a milage increase for future building projects. We did not ask for and have not sought a milage increase for the new high school or athletic facilities which is amazing and unheard of.
- Although, both our high school and elementary schools were the highest performing schools in our co-op area. We are working on improvements in both.
- We are working well during this Covid 19 plandemic and doing way better than most thought we would when school started.
- Altogether, we are off to another very good year!!

Palestine-Wheatley School District
School Nurse Report
2020-2021

- Total students seen by nurses 6, 618 resulting in 211 student sent home and 10 students sent for further evaluation for serious injury or illness.
- Total scheduled medications given during the 20-21 school year: 1350
- Total unscheduled medication given during the 20-21 school year: 1341
- Total Drug screenings performed: 322

Mandated Annual Screenings

- Over all Immunization Compliance: 99%
- Hearing Screening performed 346 with 10 referrals for further testing
- Vision Screenings performed 347 with 38 referrals for further testing
- BMI Screenings performed 324
- Scoliosis Screenings performed 82 with 4 referrals for further testing

2021 COVID Report

Total POSITIVE Cases: 61

Students: 46

Staff: 15

Total Quarantined: 587

Students: 554

Staff: 33

Public Report 10-11-21

Jamie Busby

Michael Busby

Brad ~~Johnson~~

Michael Dobbs

Randy Cannon

Krista Wilson

Gin Medford

Kelly Pearson

Debbie Bremer