

A close-up, low-angle shot of a field of golden wheat. The wheat stalks are in sharp focus in the foreground, with a soft bokeh effect in the background. The lighting is warm and bright, suggesting a sunny day. The overall color palette is dominated by golden yellows and oranges.

ELD-Emerging & Expanding period 5,6

Syllabus

Ms. Fan

zhijing_fan@chino.k12.ca.us

2020-2021 (Fall)

Contact Information

Contact Information:

Zhijing_fan@chino.k12.ca.us

Virtual Office Hours:

Ms. Fan's Weekly Schedule_Fan

MONDAY	TUESDAY	WEDNESDAY	THURSDAY	FRIDAY	MINIMUM DAY
PLC 7:30 – 8:15	OFFICE HOURS 7:30 – 8:15	OFFICE HOURS 7:30 – 8:15	OFFICE HOURS 7:30 – 8:15	OFFICE HOURS 7:30 – 8:15	PERIOD 0 6:48 – 7:20 NA
PERIOD 0 8:20 – 8:55 NA	PERIOD 0 6:45 – 8:05 NA		PERIOD 0 6:45 – 8:05 NA		PERIOD 1 7:30 – 8:02 Prep
PERIOD 1 9:05 – 9:40 Prep	PERIOD 1 8:20 – 9:40 Prep	PERIOD 4 8:20 – 9:40 Mandarin 3H/4H	PERIOD 1 8:20 – 9:40 Prep	PERIOD 4 8:20 – 9:40 Mandarin 3H/4H	PERIOD 2 8:12 – 8:44 Mandarin 2
PERIOD 2 9:50 – 10:25 Mandarin 2					PERIOD 3 8:54 – 9:26 Mandarin 1
PERIOD 3 10:35 – 11:10 Mandarin 1	PERIOD 2 10:10 – 11:30 Mandarin 2	PERIOD 5 10:10 – 11:30 ELD-Emerging	PERIOD 2 10:10 – 11:30 Mandarin 2	PERIOD 5 10:10 – 11:30 ELD-Emerging	PERIOD 4 9:36 – 10:08 Mandarin 3H/4H
PERIOD 4 11:20 – 11:55 Mandarin 3H/4H					PERIOD 5 10:18 – 10:50 ELD-Emerging
LUNCH 11:55 – 12:25	LUNCH 11:30 – 12:10	LUNCH 11:30 – 12:10	LUNCH 11:30 – 12:10	LUNCH 11:30 – 12:10	Lunch 10:50-11:20
PERIOD 5 12:35 – 1:10 ELD-Emerging	PERIOD 3 12:15 – 1:35 Mandarin 1	PERIOD 6 12:15 – 1:35 ELD-Emerging/Expanding A/B	PERIOD 3 12:15 – 1:35 Insert Course Name	PERIOD 6 12:15 – 1:35 ELD-Emerging/Expanding A/B	PERIOD 5 11:30 – 12:02 ELD-Emerging
PERIOD 6 1:20 – 1:55 ELD-Emerging/Expanding A					OFFICE HOURS 12:07 – 12:32
OFFICE HOURS 1:55 – 2:20	OFFICE HOURS 1:35 – 2:20	OFFICE HOURS 1:35 – 2:20	OFFICE HOURS 1:35 – 2:20	OFFICE HOURS 1:35 – 2:20	

Page 1 of 1 | 223 words | English (United States) | 77%

Adopted
Curriculum &
Topics
Studied:

Curriculum

iLit-Emerging

ELD Companion-Expanding A

Topics Studied:

Applied to all grade level themes

Learning Materials Requirement:

-laptop or computer or cell phone
with google classroom support app

-notebook (paper)

-pen/highlighter/ruler/pencils/erasers

-flash cards

Instruction Conduct: synchronous/Asynchronous (classroom instruction procedure)

- take attendance
- student learning objectives
- teacher's instruction
- guided practice
- student practice (individual/group collaboration)
- checking for understanding

DL Instructional Routine/Plan_ Ms. Fan

I Do

- Student Learning Object (goal)
- Bell Work
- Teacher's Instruction

We Do

- Guided Practice
- Student Practice (Peer Interaction/Collaboration)

You Do

- Independent Work/Group Work
- Checking For Understanding
- Attendance Checking

Assignment:



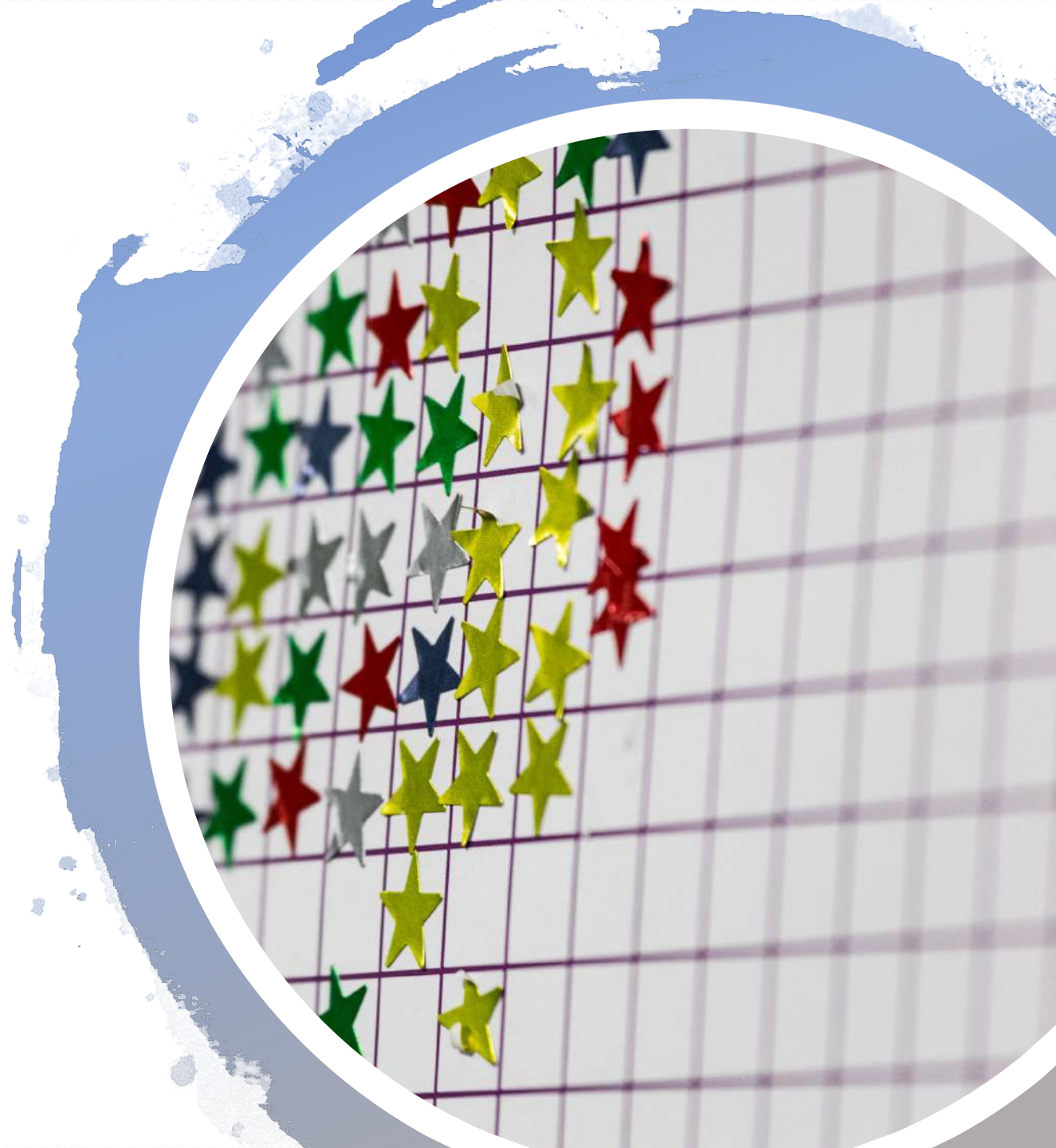
Class work is always expected to be turned in by the end of the class. The assignments/homework will be posted for the week for students in Google Classroom.



Google Classroom will be used as the platform for 1st semester. If any inefficiency takes place, Microsoft Teams will be another option.

Attendance:

- Attendance will be taken on daily basis through Google Classroom. Please be sure to check your attendance before leaving the class by filling the Google Form.
- If a student is absent from a meeting, the student is expected to notify your teacher before school starts with parent's verification in written (email or photocopy of parent's note)



Behavior Expectations & Academic Honesty

- Please see the 3B's (Be Respect, Be Responsible, Be Safe) Classroom Matrix.
- Cheating will not be tolerated. Copying another student's homework, copying during test or quiz, referring to unauthorized notes on a test or quiz are considered cheating and will result in a grade of zero on the assignment for both students.

Assessment

- Assessment will be provided periodically with varied types of assessment (summative assessment and formative assessment).
- Common Core and World Language Standard and National Foreign Language Standard will be applied in any type of assessment.

Grading Systems

Homework: 25%

Class work: 10%

Participation: 10%

Vocabulary Quizzes: 10%

Projects/Presentation: 15%

Unit Tests: 15%

Final Exam: 15%