

Welcome!

Please sign in at the table by the door then take a seat.

We will begin our presentation in just a moment...



Krisi Guzman
Intro to World Languages

Warm Springs Middle School
Room 614



Who is this teacher as a person?



GEORGETOWN UNIVERSITY



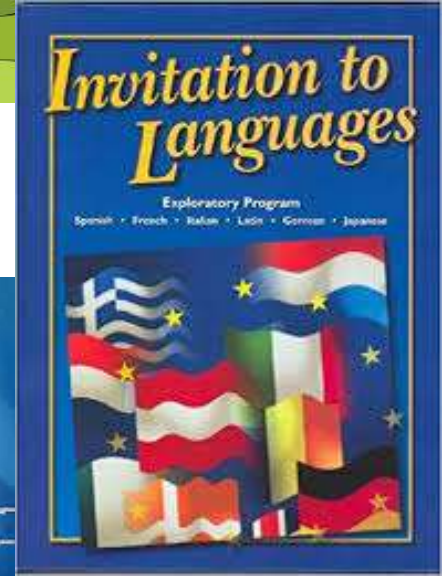
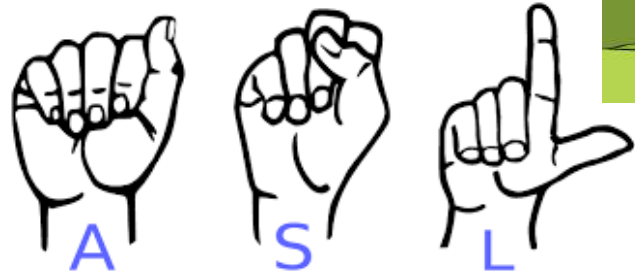
**YOU CAN'T
SCARE ME
I HAVE THREE DAUGHTERS!**



shutterstock.com • 589846703



What will we be doing this year?



How will my student be graded?



A+ 99.0% above

A 93% to 98%

A- 90% to 92%

B+ 88% to 89%

B 83% to 87%

B- 80% to 82%

C+ 78% to 79%

C 73% to 77%

C- 70 to 72%

D+ 68% to 69%

D 63% to 67%

D- 60% to 62%

F BELOW 60%



Intro to World Languages

Academic Participation 50%

(includes class work, homework, participation)

Quizzes 20%

Projects 30%

Late work

- Class Work/Homework = 10% deduction
- Projects = 50% deduction
- ❖ Late work must be turned in by the next class meeting, or it will not be accepted.



Student Resources



Wildcat Den Hours

Before School:

Mon-Fri 8:00-8:50 a.m.

After School:

Mon 2:00-4:00 p.m.

Tue-Fri 3:15-4:00 p.m.



Remember...

*I truly believe in your student's
potential and I want your
student and you to believe in it
too!*

Have an awesome year!

Mrs. Guzman

