



The Assistive Technology Continuum: Classroom Implications for All Learners

- **Montgomery Township Public Schools: Year**

1



The Assistive Technology Team

- Jaime Acheson
 - 1st/2nd LLD (Orchard Hill)
- Cherrie Brown
 - 3rd/4th Grade LLD (Village)
- Jim Dolan
 - Technology (Village)
- Lisa Kontos
 - 5th Grade LLD (LMS)
- Rochelle Kyrk
 - Speech Therapist (LMS/UMS)
- Amy Mintz
 - 7th/8th LLD (UMS)
- Violet Markmann
 - Technology (LMS/UMS)
- Kelly O'Connell
 - 6th Grade LLD (LMS)
- Patricia Rowe
 - Art (High School)
- Rachel Steinberg
 - Technology (Orchard Hill)
- Amy Welsh
 - Resource Room (Village)
- Kathy Young
 - Technology (UMS/Village)

Who is CATIES?

- **Center for Assistive Technology & Inclusive Education Studies**
 - Located at The College of New Jersey
 - <http://caties.tcnj.edu>
 - caties@tcnj.edu
- They are dedicated to improving the educational experiences of students (Pre-K - College) with disabilities by linking faculty and staff expertise with the needs of New Jersey's educational community.



Professional Development Model

Sustained model of professional development

- Timeframe: September 2005 through May 2006

Comprised of:

- One full- day training a month at CATIES at TCNJ
(1st Wednesday of every month)
- One follow-up session a month in district
(3rd Thursday of every month)
- In-district consultative visits with CATIES' AT Specialist
(3rd Thursday & 4th Monday of every month)
- Participated in Team Listserve



Full-day Workshop Topics

- Introduction to Assistive Technology & Universal Design for Learning (UDL)

Customizing Microsoft Office for Students and Staff

Assistive Technology as a Reading Tool

Assistive Technology as a Writing Tool

Assistive Technology Math Tools

- *All workshops were hands-on and located at CATIES*



AT is Everywhere

**AT doesn't
have to be
expensive or
complicated**





AT is Everywhere

AT doesn't have to be expensive or complicated

Management and Smith Barney Asset Management. Covering both retail and institutional businesses, it had more than 400 billion dollars under management by mid-2001.

The last years of Citigroup's first century in Asia were marked by expansion, particularly on the consumer side of the group, through credit cards, priority banking and wealth management services. One of the most exciting opportunities was to extend its reach across an even wider customer spectrum in Asia. Remote banking was no longer an impracticable dream, and was set to revolutionize the delivery of financial services.

Private banking was especially strong. "We saw 65 percent compounded growth in net income between 1998 and 2001 and 30 percent increase in customer acquisition," said Dee Sharma, the managing director of Citigroup's Asia Pacific Private Banking Group.





**AT doesn't
have to be
expensive or
complicated**

**AT can be anything
that eliminates
barriers.**





**AT doesn't
have to be
expensive or
complicated**

**AT can be anything
that eliminates
barriers.**





**AT doesn't
have to be
expensive or
complicated**

**AT can be anything
that eliminates
barriers.**

**AT can be
found in most
local stores**





**AT doesn't
have to be
expensive or
complicated**

**AT can be anything
that eliminates
barriers.**

**AT can be
found in most
local stores**





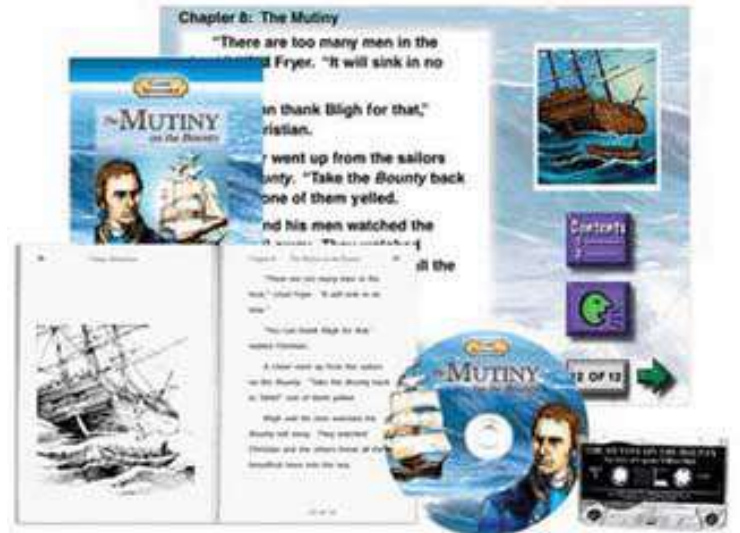
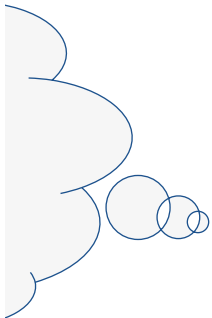
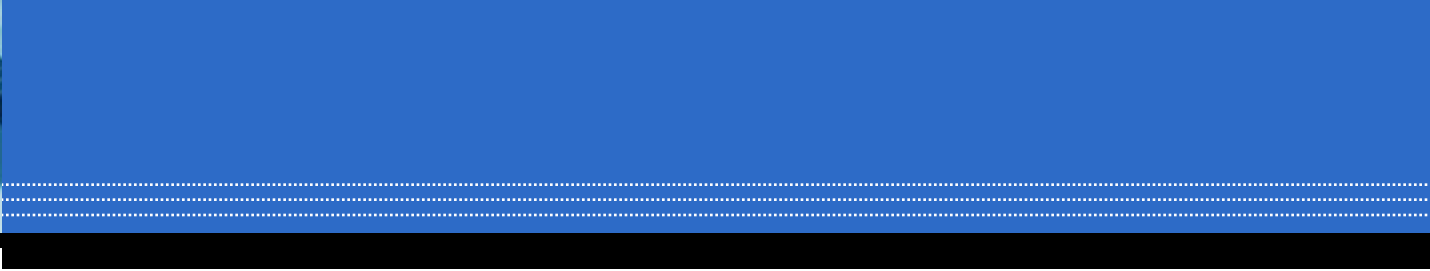
**AT doesn't
have to be
expensive or
complicated**

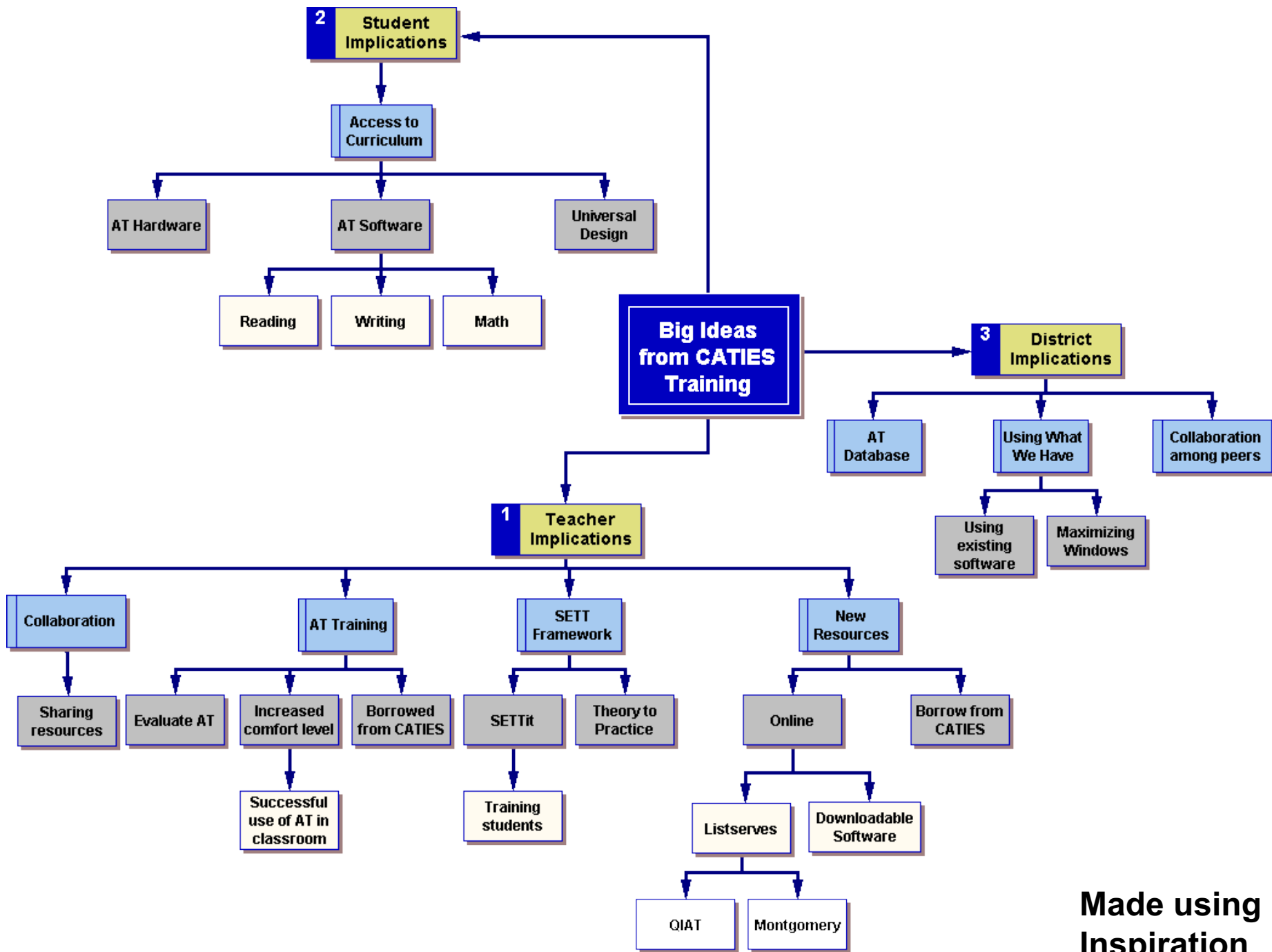
**AT can be anything
that eliminates
barriers.**

**AT can be
found in most
local stores**

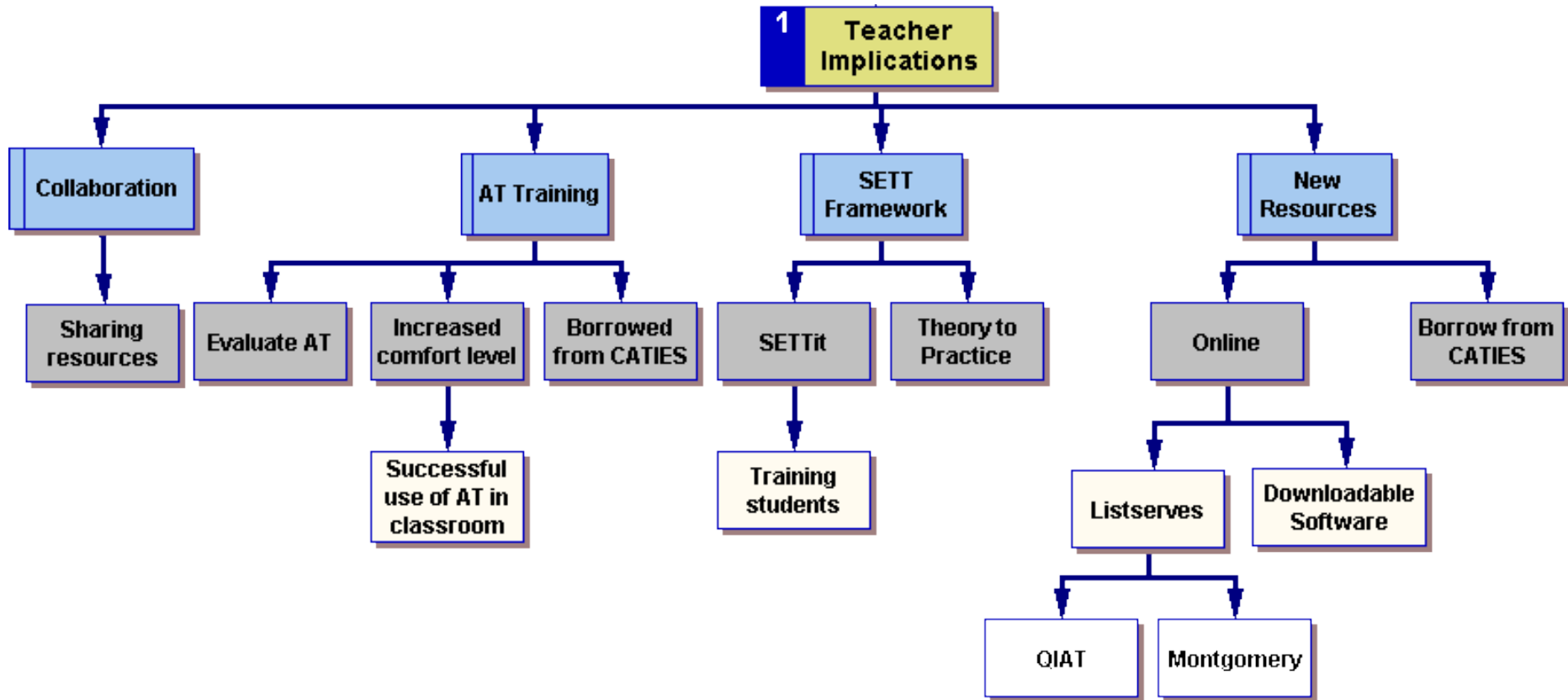


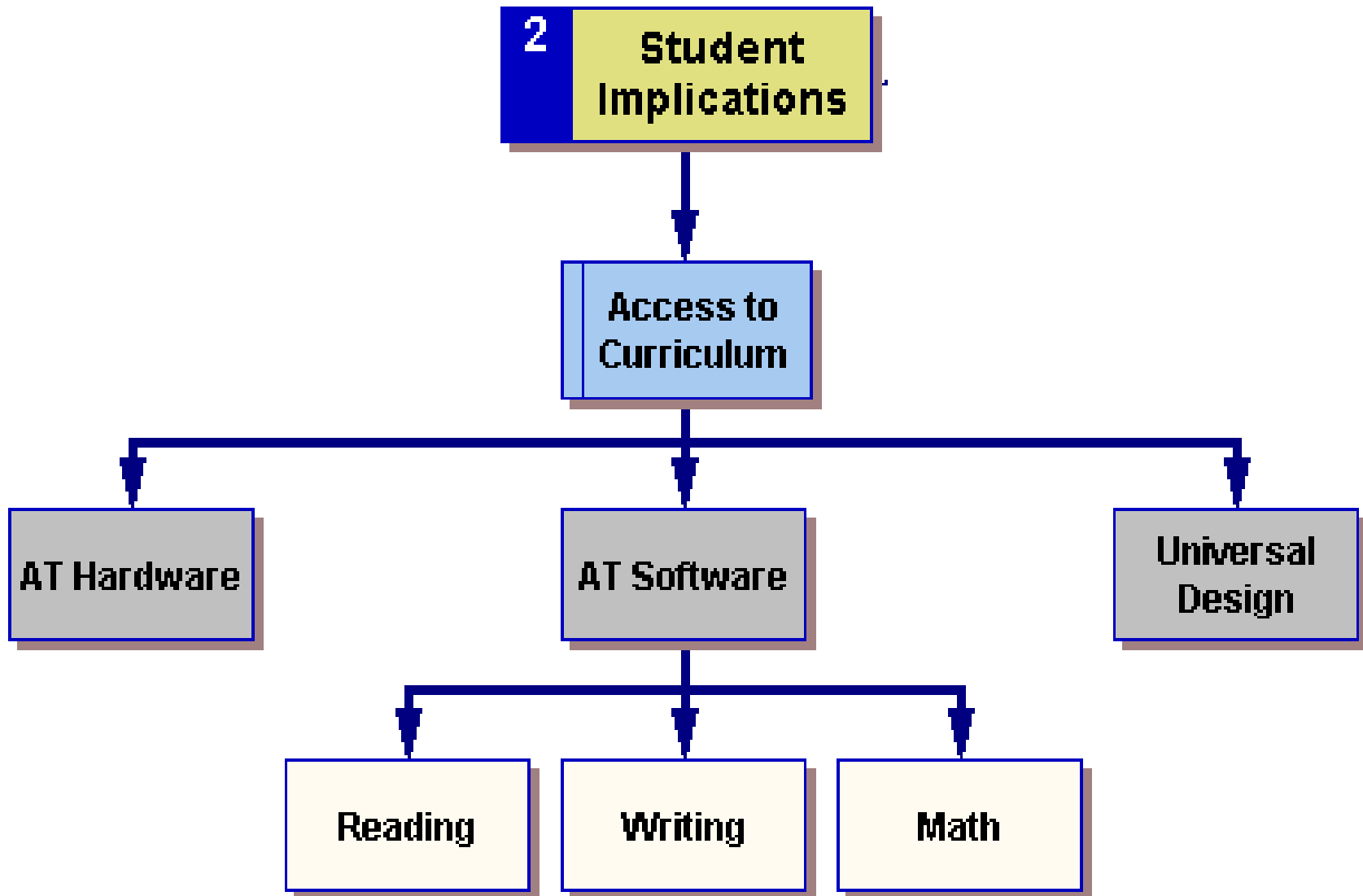
**AT can be
bought or
home-made**





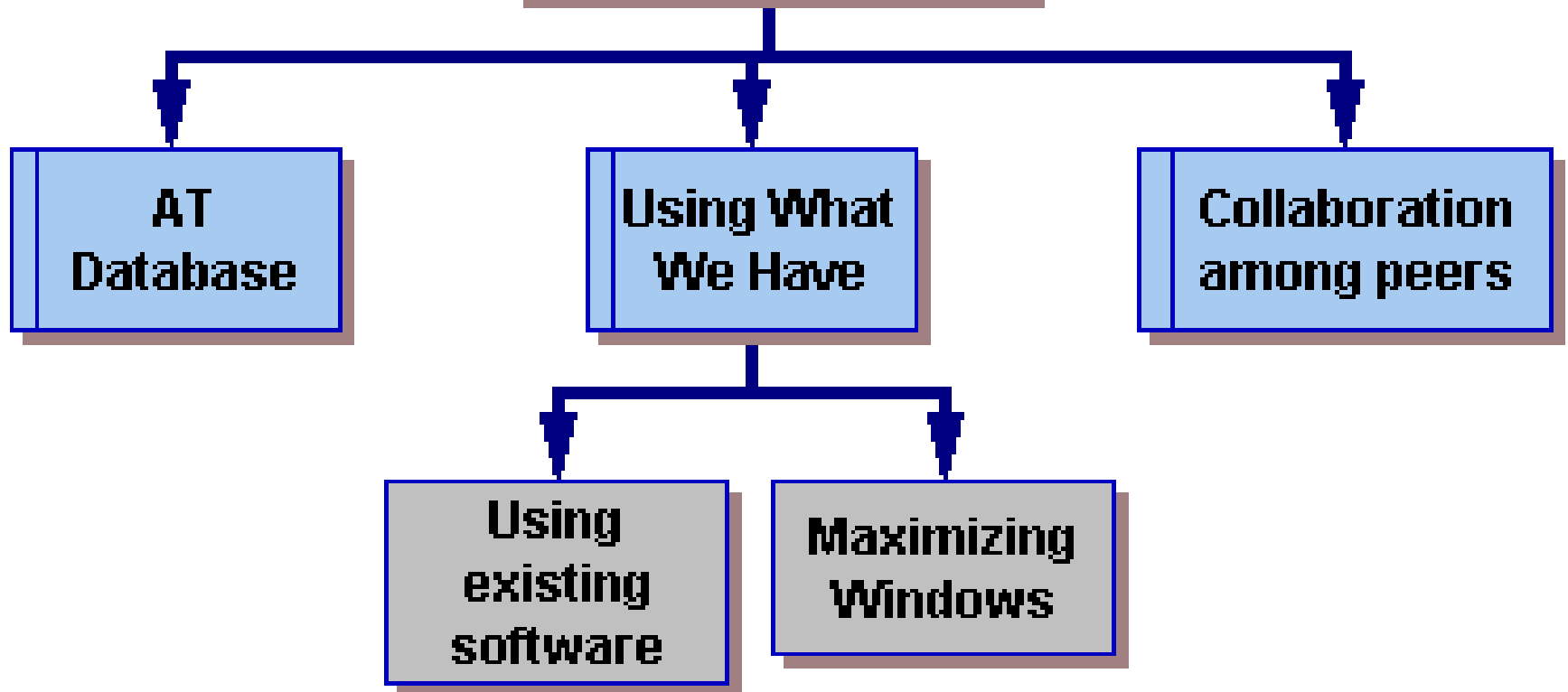
Made using Inspiration





3

District Implications



⑩ **Summer Institute**

Monday June 26th & Tuesday June 27th

⑩ **Low Tech to High Tech AT**

- Customizing Microsoft Word
- Universal Design for Learning (UDL)
- Customizing Windows
- *Free AT Stuff!!!*

Workshop Series

- ⑩ Three follow-up workshops will be offered throughout the course of the