

State of the System

September 2016



The mission of the Griffin-Spalding County School System is to empower students to graduate college and career ready.



Vision Statement

The vision of the Griffin-Spalding County School System is to be an agent of change, transforming our students into future-ready learners and contributing members of society.



The mission of the Griffin-Spalding County School System is to empower students to graduate college and career ready.



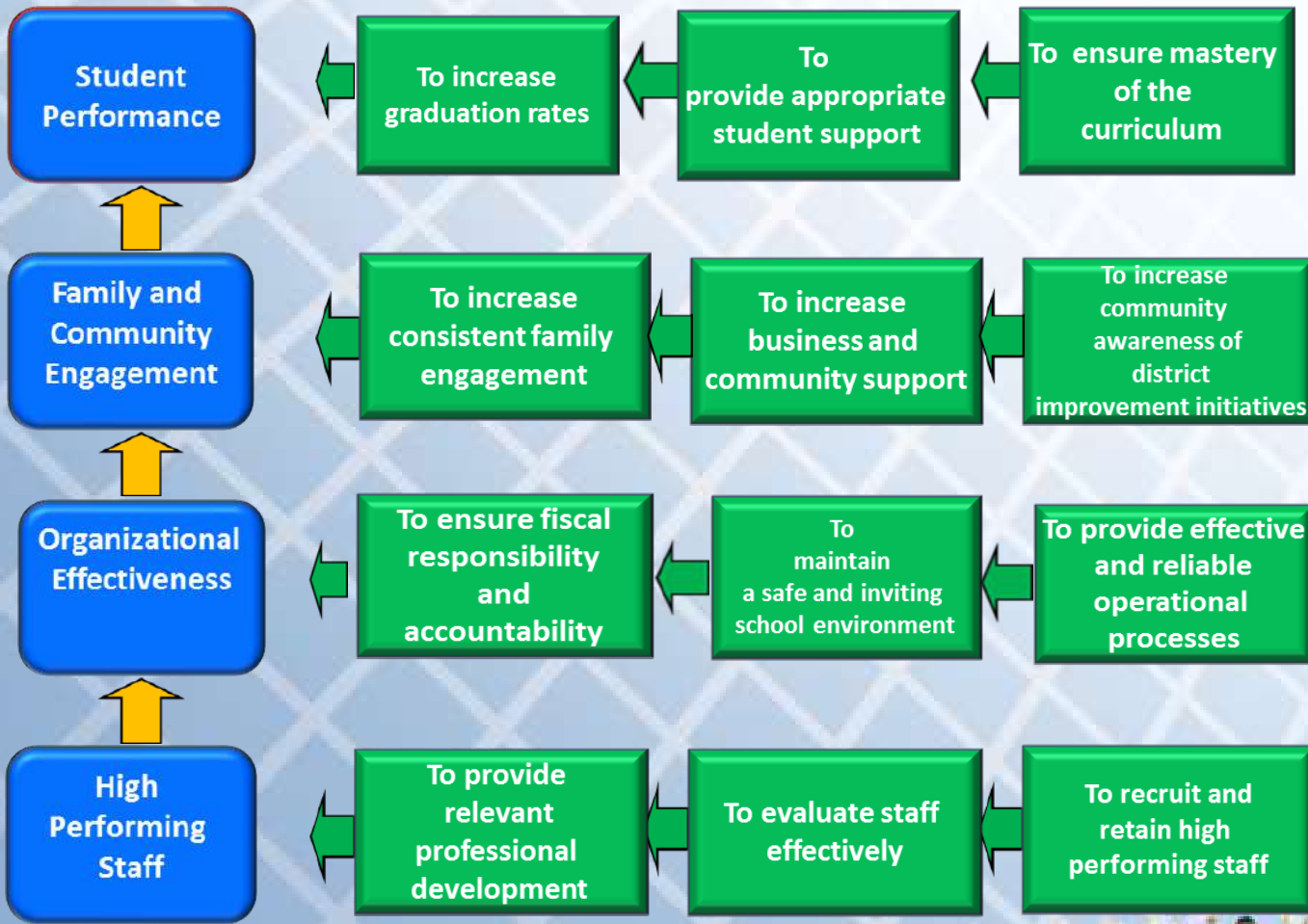
Mission Statement

The mission of the Griffin-Spalding County School System is to empower students to graduate college and career ready.



The mission of the Griffin-Spalding County School System is to empower students to graduate college and career ready.

2016-2021 GSCS Strategic Plan



The mission of the Griffin-Spalding County School System is to empower students to graduate college and career ready.

Underway

- Strategic waiver system contract was approved
- Task force reviewing alternative education
- Task force reviewing early childhood learning
- Griffin Region College and Career Academy
- Curriculum audit



2015 Graduation Rate Comparison

	2015	2014
GSCS	69.17	66.6
State	78.8	72.5

*Both traditional HS were at 72% or higher. While AZKA graduation rate is not as high, it represents students who might not have graduated from a traditional high school setting.



2016 Attendance Rate Comparison

	2016	2015
GSCS	95.31%	95.27%
Enrollment	10,229	10,327
Days absent	86,458	88,556

*2016-17 will have five fewer student days due to inclusion of professional learning days within calendar



2016 MILESTONES RESULTS

(WITH COMPARISON TO 2015)



3 RD GRADE	STATE	RESA	GSCS
ELA	35 (37)	34 (37)	20 (26)
MATH	40 (38)	39 (36)	26 (32)
SCIENCE	35 (34)	34 (34)	23 (25)
SOCIAL STUDIES	30 (30)	31 (30)	24 (24)



The mission of the Griffin-Spalding County School System is to empower students to graduate college and career ready.

2016 MILESTONES RESULTS

(WITH COMPARISON TO 2015)



5 TH GRADE	STATE	RESA	GSCS
ELA	41 <small>(39)</small>	39 <small>(40)</small>	29 <small>(31)</small>
MATH	38 <small>(38)</small>	34 <small>(36)</small>	27 <small>(28)</small>
SCIENCE	39 <small>(36)</small>	38 <small>(37)</small>	34 <small>(35)</small>
SOCIAL STUDIES	30 <small>(29)</small>	29 <small>(28)</small>	23 <small>(22)</small>



The mission of the Griffin-Spalding County School System is to empower students to graduate college and career ready.

2016 MILESTONES RESULTS

(WITH COMPARISON TO 2015)



8 TH GRADE	STATE	RESA	GSCS
ELA	44 (39)	44 (40)	28 (27)
MATH	33 (37)	31 (36)	16 (27)
SCIENCE	27 (32)	33 (30)	20 (17)
SOCIAL STUDIES	38 (33)	35 (29)	22 (20)



The mission of the Griffin-Spalding County School System is to empower students to graduate college and career ready.

2016 MILESTONES RESULTS

High School End of Course – Winter 2015



	STATE	RESA	GSCS
9 th Grade Literature and Composition	35	22	12
American Literature and Composition	32	30	32
Coordinate Algebra	24	11	0
Analytic Geometry	56	24	20
Algebra I	36	22	22



The mission of the Griffin-Spalding County School System is to empower students to graduate college and career ready.

2016 MILESTONES RESULTS

High School End of Course – Winter 2015



	STATE	RESA	GSCS
Biology	38	20	24
Physical Science	28	12	19
U.S. History	39	24	21
Economics	44	51	42



The mission of the Griffin-Spalding County School System is to empower students to graduate college and career ready.

2016 READING LEVELS

Percentage at or above grade level



	STATE	RESA	GSCS
3 rd grade	72	73	60 (56)
4 th grade	58	59	44 (51)
5 th grade	68	70	59 (57)
6 th grade	59	60	49 (46)
7 th grade	74	76	63 (57)
8 th grade	76	79	61 (60)

Curriculum Audit

- Detailed, independent review of the curriculum and instructional program of the school district
- Commissioned by the district
- Looks for alignment between curriculum, instructional practices, and assessment design
- Last conducted in 1997
- Fresh review needed due to :
 - Leadership changes
 - Accountability changes – Milestones and Strategic Waiver contract
 - 2016-21 strategic plan



Curriculum Audit Recommendations



- Board policy review/revision/adoption
- Review/revise table of organization
- Focus all planning under a comprehensive planning umbrella
- Develop/implement a comprehensive curriculum management plan
- Develop a comprehensive student assessment and program evaluation system



Curriculum Audit Recommendations



- Formal monitoring of district instructional practices to promote consistency across all levels
- Short and long term strategies to address and eliminate disparities and inequities
- Comprehensive professional learning plan
- Curriculum-driven budget process
- System for selecting, planning, implementing, and monitoring program interventions.





The mission of the Griffin-Spalding County School System is to empower students to graduate college and career ready.



The mission of the Griffin-Spalding County School System is to empower students to graduate college and career ready.





The mission of the Griffin-Spalding County School System is to empower students to graduate college and career ready.



GSCS

Grow Sustain Collaborate Succeed



The mission of the Griffin-Spalding County School System is to empower students to graduate college and career ready.



Vision Statement

The vision of the Griffin-Spalding County School System is to **be an agent of change**, transforming our students into future-ready learners and contributing members of society.



The mission of the Griffin-Spalding County School System is to empower students to graduate college and career ready.



THE TIME IS NOW



The mission of the Griffin-Spalding County School System is to empower students to graduate college and career ready.