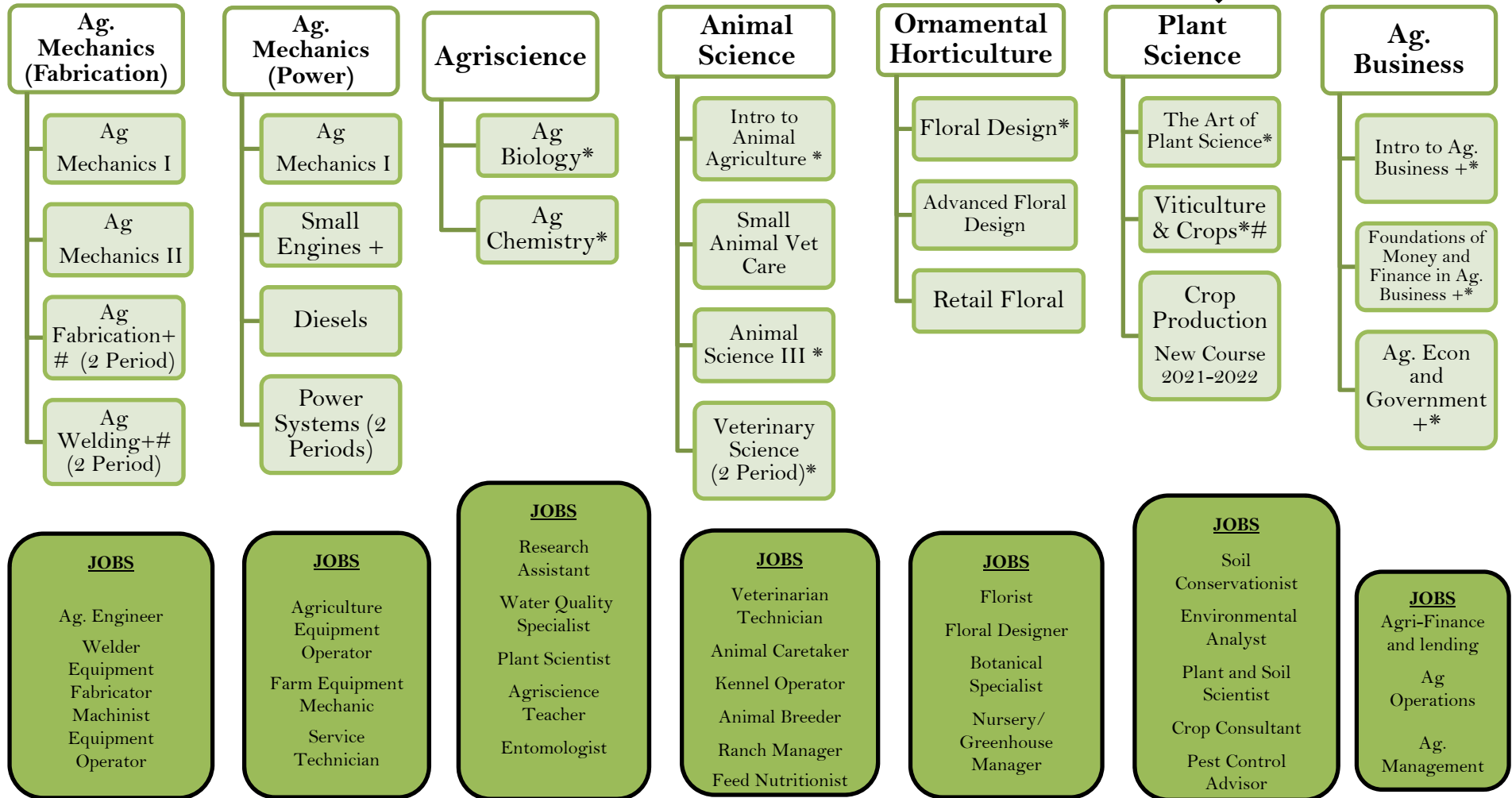




Agriculture & Natural Resources

Students engage in an instructional program that integrates academic and technical preparation and focuses on career awareness, career exploration, and skill preparation. The pathways emphasize real-world, occupationally relevant experiences of significant scope and depth. Integral components of classroom and laboratory instruction, supervised agricultural experience projects, and leadership and interpersonal skills development prepare students for continued training, advanced educational opportunities, or entry to a career.

Career Academy of Special Interest (CASI) Transfer Available



*Receives CSU/UC, A-G Credit; #Offered on Alternating Year; + College Credit Opportunity



Arts, Media, and Entertainment

Core arts-sector occupations demand constantly varying combinations of artistic imagination, metaphoric representation, symbolic connections, and technical skills. Successful career preparation involves both broad and in-depth academic and technical preparation as well as the cultivation of twenty-first-century skill assets, such as flexibility, problem-solving abilities, and interpersonal skills. The anchor and pathway standards make explicit the appropriate knowledge, skills, and practical experience students should have in order to pursue their chosen profession, whether that profession requires postsecondary education, graduate training, or apprenticeship.



Production and Managerial Arts

- Language Takes the Stage * and Drama 1 *\$
- Theater Technology*
- Theater Production (2 Periods)*#
- Social Action Theater *

- JOBS**
- Producers/Directors
 - Manager/Production
 - Manager Talent
 - Management Theatrical
 - Broadcast Technician

Performing Arts

- Language Takes the Stage * and Drama 1 *\$
- Drama II*
- Performing Arts (2 Periods) *#
- Social Action Theater *

- JOBS**
- Actor (e.g., Stage, Film, Video, DVD)
 - Performing Artist
 - Singer/Dancer
 - Voiceover Artist
 - Narrator

Design Visual and Media Arts

- Media Arts Applications*
- Digital Art Photography*
- Video & Animation (2 Periods)*

- JOBS**
- Digital Animator
 - Artistic Director
 - Commercial Artist
 - Web Designer
 - Museum Curator
 - Video Technician

* Receives CSU/UC, A-G Credit; #Offered on Alternating Year; \$ Not a CTE Course

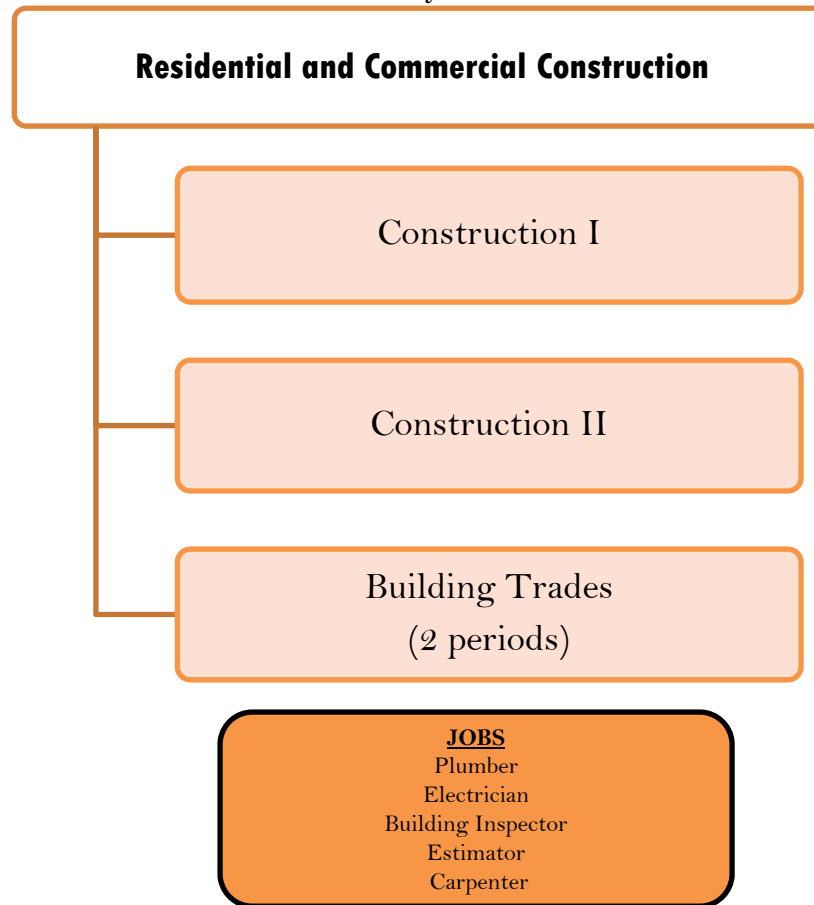


Building and Construction Trades



Students engage in an instructional program that integrates academic and technical preparation and focuses on career awareness, career exploration, and skill preparation in the Building and Construction Trades industry. The sector encompasses four career pathways: Cabinetry, Millwork, and Woodworking; Engineering and Heavy Construction; Mechanical Systems Installation and Repair; and Residential and Commercial Construction. These pathways emphasize processes, systems, and the way in which structures are built. The knowledge and skills are acquired in a sequential, standards-based pathway program that integrates hands-on, project-based, and work-based instruction. Standards included in the Building and Construction Trades sector are designed to prepare students for technical training, postsecondary education, and entry to a career.

Career Academy of Special Interest (CASI) Transfer Available

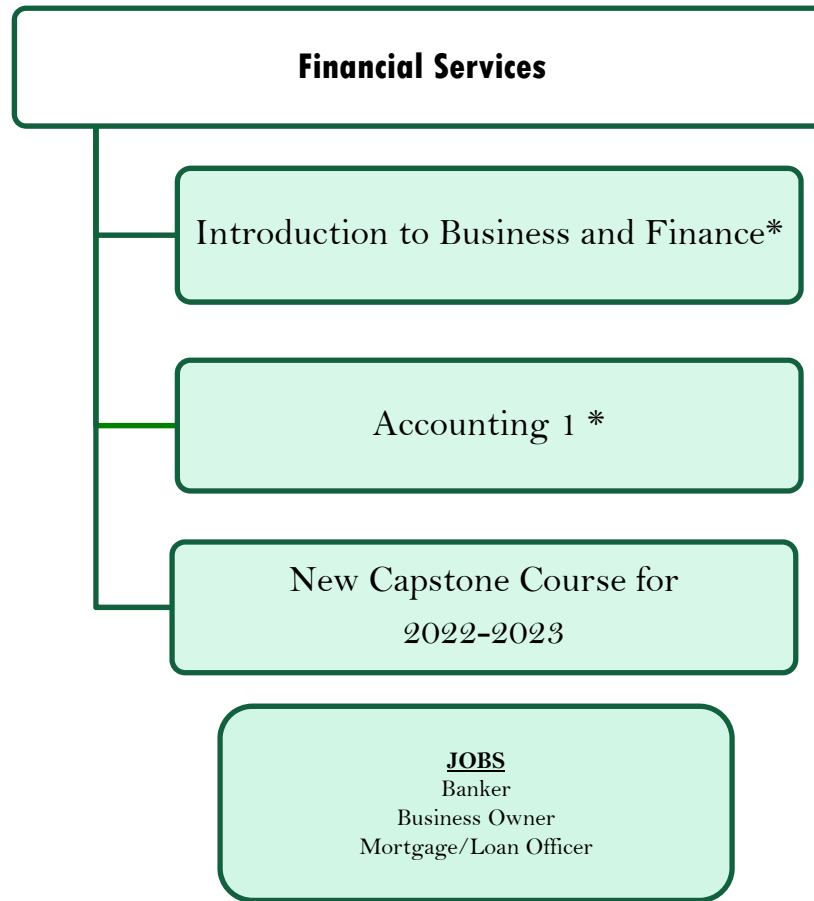


* Receives CSU/UC, A-G Credit; #Offered on Alternating Year; + College Credit Opportunity



Business and Finance

Persons trained in fields such as business management, international trade, and various financial services specialties (e.g., accounting, banking, and investing) will find that their skills are highly marketable. Students master basic business principles and procedures before proceeding to the career path specializations. The specializations emphasize concepts of accounting and finance, including computer applications, taxes, investments, and asset management as well as pathways in international business and business management. Because almost every business and organization has a financial and management component, students will find that opportunities exist in many career paths in addition to those in business and finance.

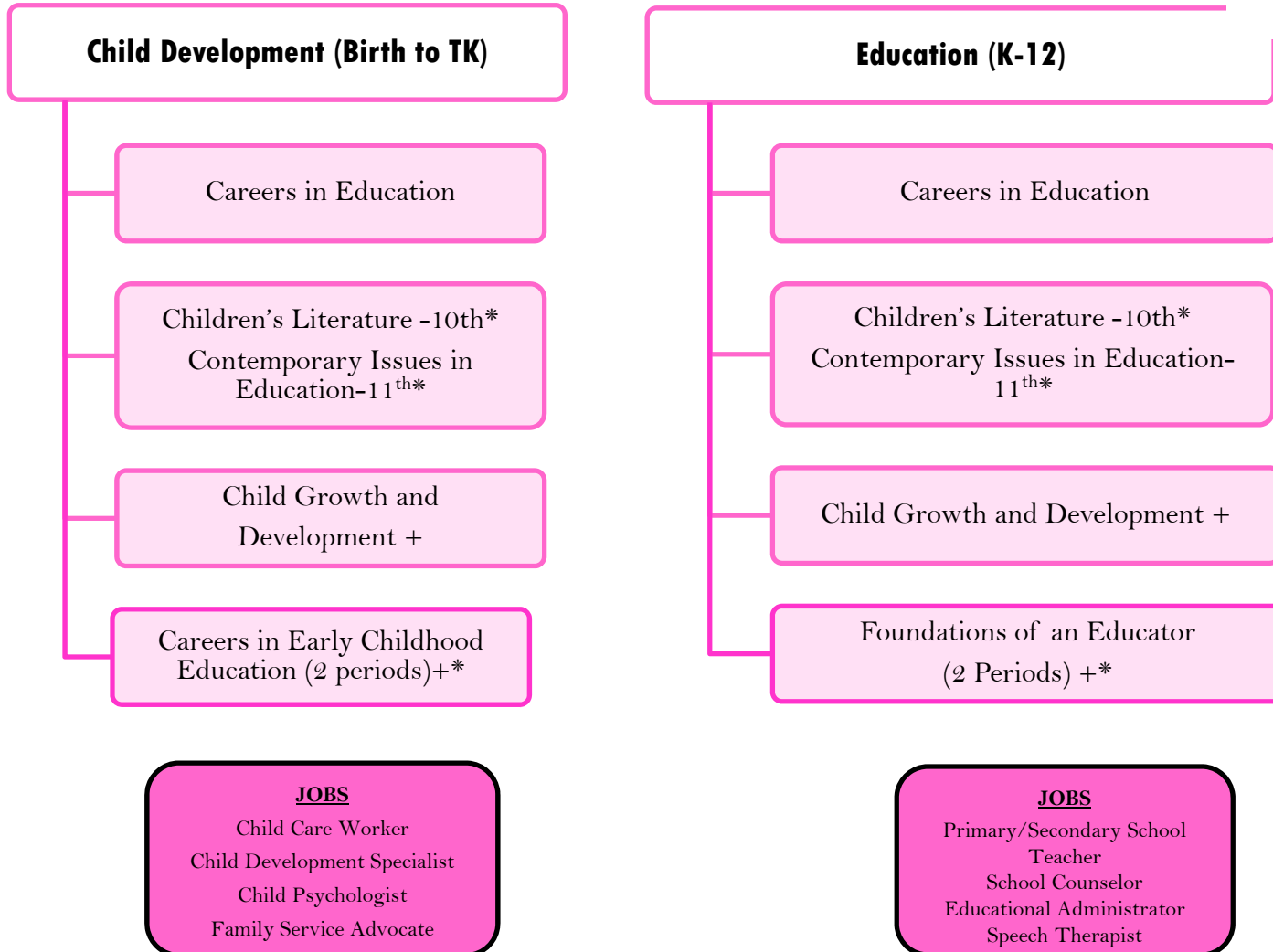


* Receives CSU/UC, A-G Credit; #Offered on Alternating Year; + College Credit Opportunity



Education and Child Development

The Child Development pathway provides students with the skills and knowledge they need to pursue careers in child care and related fields, and the Education pathway emphasizes the preparation of students to become teachers. The standards are designed to integrate academic and career technical concepts. The anchor standards include Consumer and Family Studies comprehensive technical knowledge and skills that prepare students for learning in the pathways. The knowledge and skills are acquired within a sequential, standards-based pathway program that integrates hands-on projects, work-based instruction, and leadership development—for example, through Family, Career and Community Leaders of America (FCCLA).



* Receives CSU/UC, A-G Credit; #Offered on Alternating Year; + College Credit Opportunity

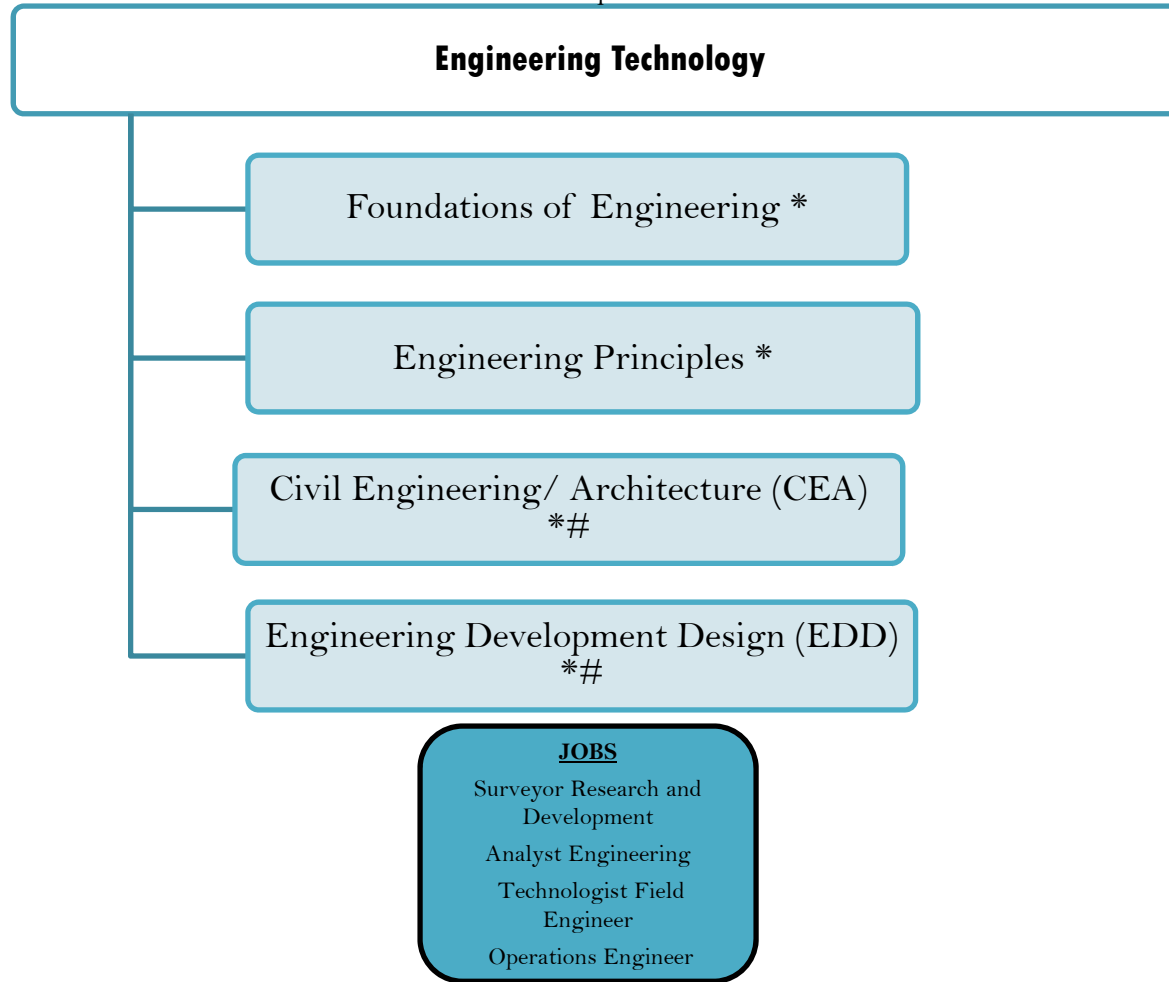


Engineering and Architecture



This sector is designed to provide a foundation in engineering, architecture, and design for students in California. Students are engaged in an instructional program that integrates academic and technical preparation and focuses on career awareness, career exploration, and career preparation. To prepare students for continued training, advanced educational opportunities, and direct entry to a career, the Engineering and Architecture programs offer the following components: classroom, laboratory, and hands-on contextual learning; project- and work-based instruction; and leadership and interpersonal skills development.

Career Academy of Special Interest (CASI) Transfer Available



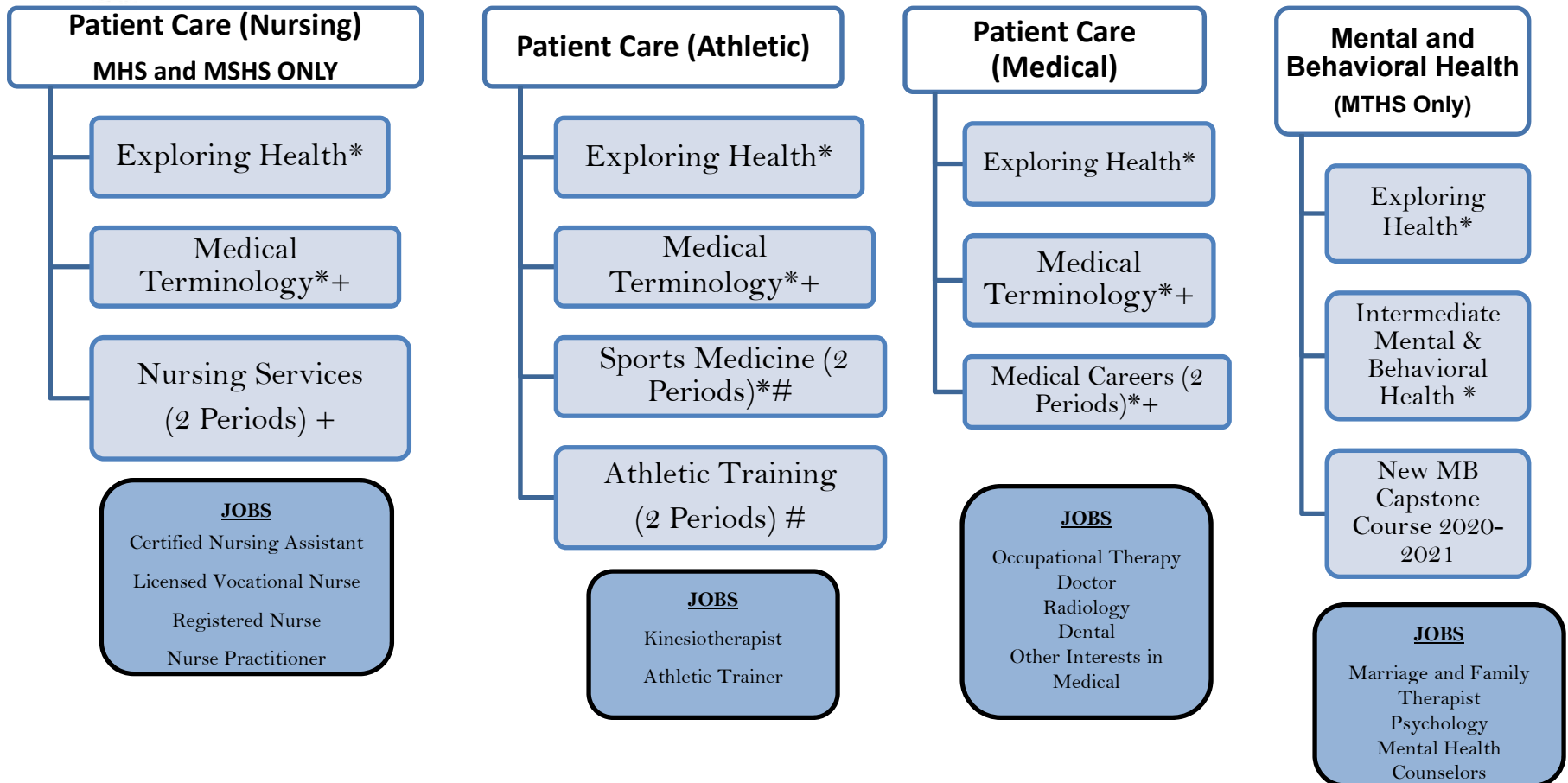
* Receives CSU/UC, A-G Credit; #Offered on Alternating Year; + College Credit Opportunity



Health Science and Medical Technology



The standards in this sector represent the academic and technical skills and knowledge students need to pursue a full range of career opportunities in health science and medical technology, from entry level to management as well as technical and professional career specialties. The standards describe what workers need to know and be able to do to contribute to the delivery of safe and effective health care. The six career pathways are grouped into functions that have a common purpose and require similar attributes. The pathways are Biotechnology, Patient Care, Health Care Administrative Services, Health Care Operational Support Services, Public and Community Health, and Mental and Behavioral Health. Standards for each career path build on and continue the anchor standards with more complexity, rigor, and career specificity.

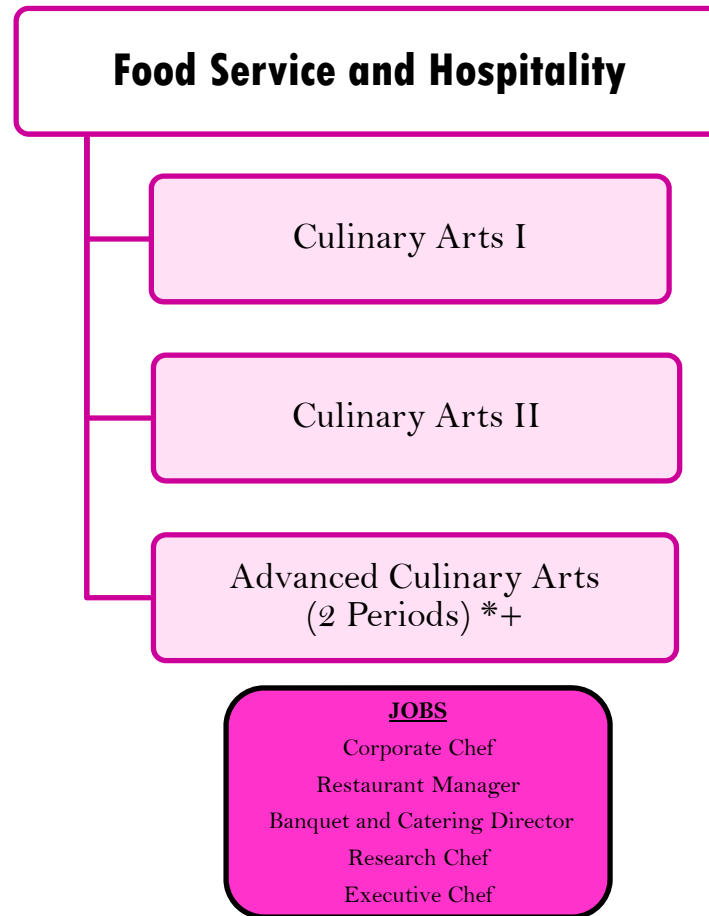


* Receives CSU/UC, A-G Credit; #Offered on Alternating Year; + College Credit Opportunity



Hospitality, Tourism, and Recreation

The Hospitality, Tourism, and Recreation sector provides students with the academic and technical preparation necessary to pursue high-skill, high-demand careers in these related and growing industries. The sector encompasses three distinct, yet interrelated, career pathways: Food Science, Dietetics, and Nutrition; Food Service and Hospitality; and Hospitality, Tourism, and Recreation. The standards are designed to integrate academic and career technical concepts. The knowledge and skills are acquired within a sequential, standards-based pathway program that integrates hands-on projects, work-based instruction, and leadership development such as that offered through FHA-HERO, the California affiliate of Family, Career and Community Leaders of America (FCCLA).



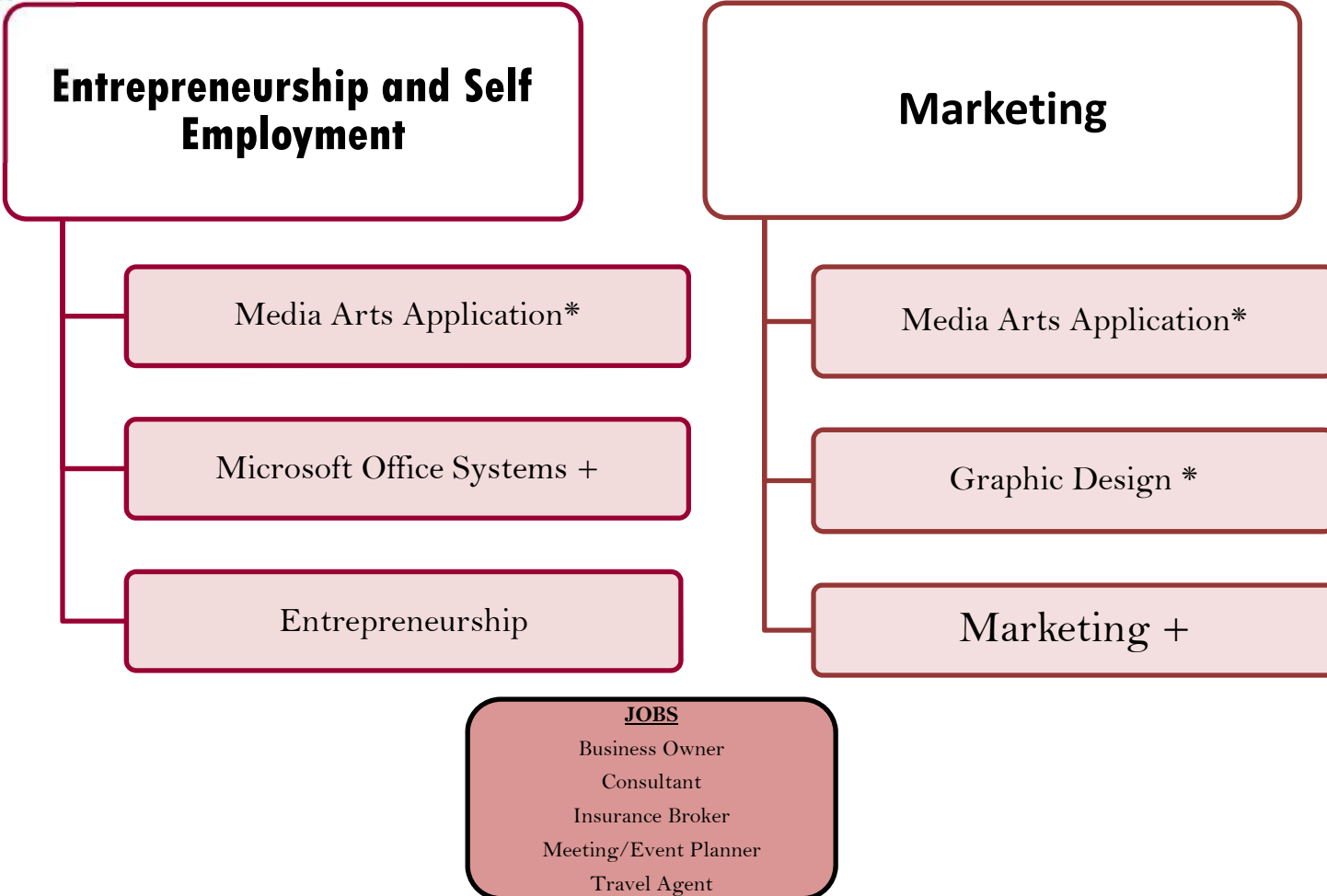
* Receives CSU/UC, A-G Credit; #Offered on Alternating Year; + College Credit Opportunity



Marketing Sales and Service



The Marketing, Sales, and Services sector is designed to align career-path course work with current and projected employment opportunities. There is a basic business foundation in this sector: marketing and innovation are two major competitive issues for business today. Marketing includes the processes and techniques of identifying, promoting, and transferring products or services to consumers and is a function of almost every business. It exists within an environment of rapidly changing technology, interdependent nations and economies, and increasing demands for ethical and social responsibility.



* Receives CSU/UC, A-G Credit; #Offered on Alternating Year; + College Credit Opportunity

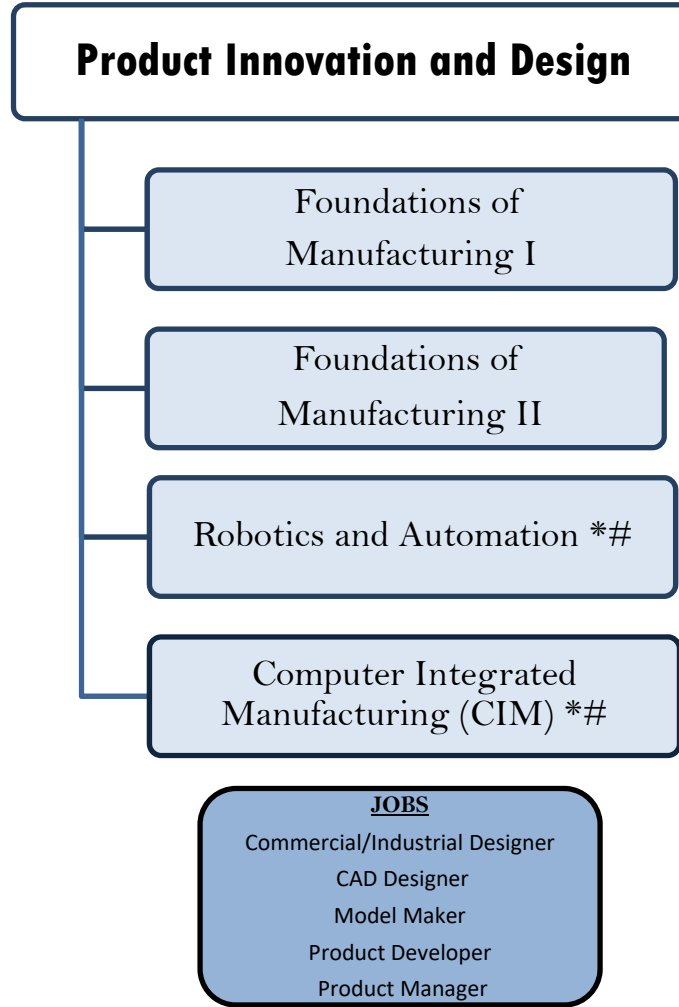


Manufacturing & Product Development



The Manufacturing and Product Development sector provides a foundation for secondary students in California in manufacturing processes and systems, including graphic design production, machine tooling and forming, welding and materials joining, and product innovation and design. Students engage in an instructional program that integrates academic and technical preparation and focuses on career awareness, career exploration, and skill preparation in four pathways.

Career Academy
of Special
Interest (CASI)
Transfer
Available



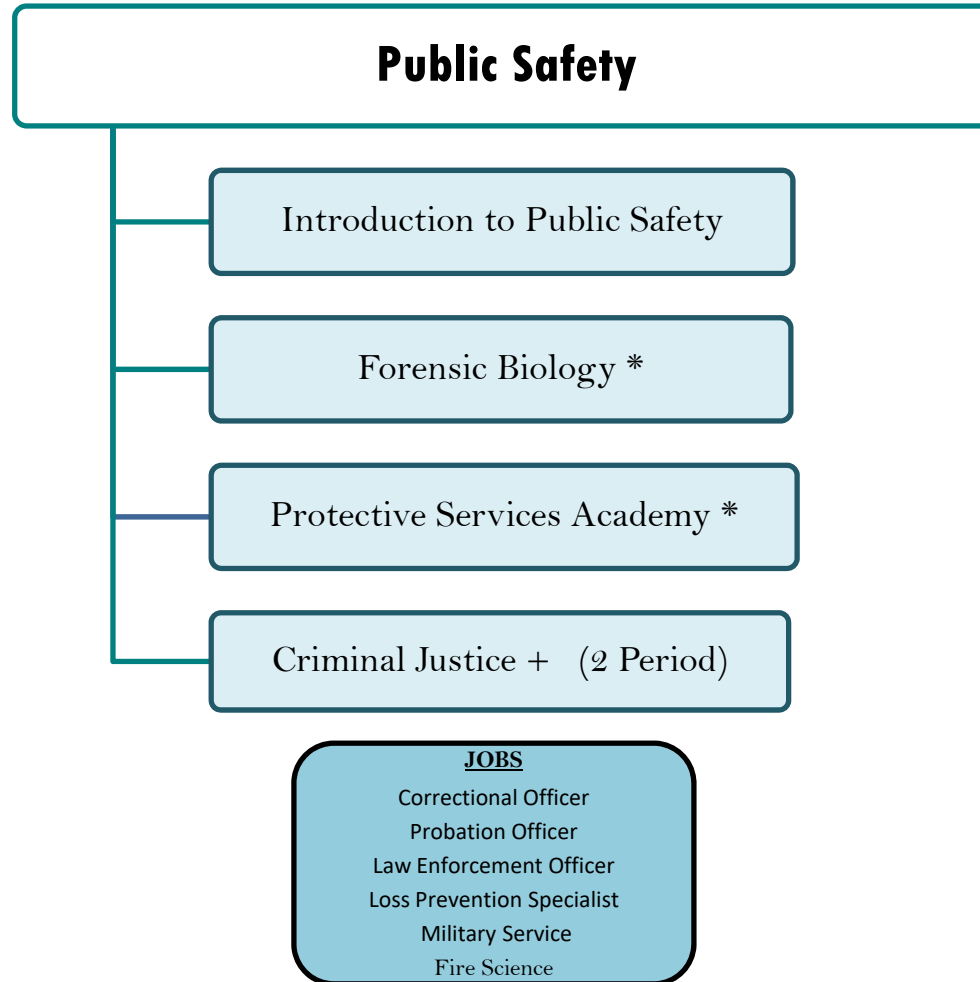
* Receives CSU/UC, A-G Credit; #Offered on Alternating Year; + College Credit Opportunity



Public Services



The Public Safety pathway prepares students with a broad-based foundational knowledge in careers that involve public safety. The educational foundation will assist students who wish to pursue related professional training at the postsecondary level. Students will gain experience through classroom instruction, hands-on training, and community exercises. The evolving integration of state public safety organizations, their connections with federal and state intelligence and security agencies, interoperability and coordination of effort, and the shared mission to protect the public in a post-9/11 world are areas of emphasis for the pathway. The careers included in this pathway primarily address law enforcement services, homeland and cyber security services, and correctional services.



* Receives CSU/UC, A-G Credit; #Offered on Alternating Year; + College Credit Opportunity



Transportation



The pathways in the Transportation sector emphasize real-world, occupationally relevant experiences of significant scope and depth. Integral components include classroom, laboratory, and hands-on contextual learning; project- and work-based instruction; and leadership development. The standards in this sector prepare students for continued training, postsecondary education, and entry to a career. The two focus areas are automotive and heavy or Semi-Truck repair.

Automotive: Systems, Diagnostic, Service and Repair

Heavy Truck: Systems, Diagnostic, Service and Repair

Career Academy of Special Interest (CASI) Transfer Available

Exploration of Transportation*

Exploration of Transportation*

Automotive Systems Technology (2 Period) #
2021-2022

Medium/Heavy Truck Repair I
2021-2022

Diesel Technology (2 Period) #
2022-2023

New Heavy Truck Capstone
2022-23

JOBS
Auto Mechanic
Diesel Mechanic
Alignment Technician

* Receives CSU/UC, A-G Credit; #Offered on Alternating Year; + College Credit Opportunity