

Fish Body Part Review





This fin is the Anal fin



Image by Riedell/Vanderwal©2005

This fish is a female.

female

male

This cover is called the **OPERCULUM**

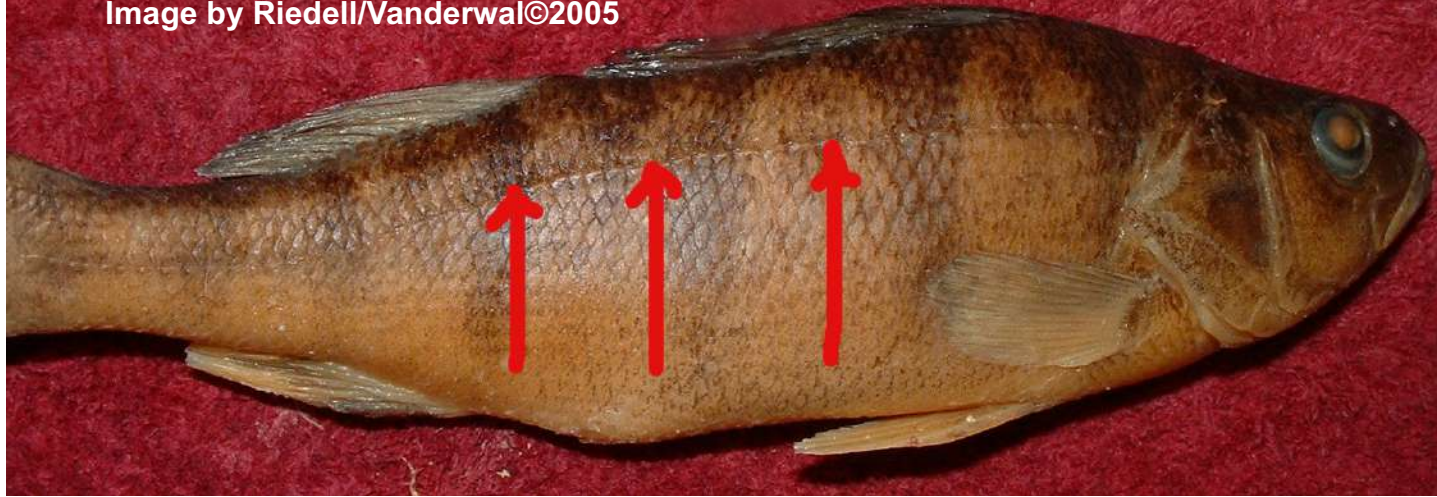


**This is the
heart**



Image from BIODIDAC

Image by Riedell/Vanderwal©2005



This sense organ is called the
Lateral line system

Tell TWO things it can sense
Vibration & water pressure

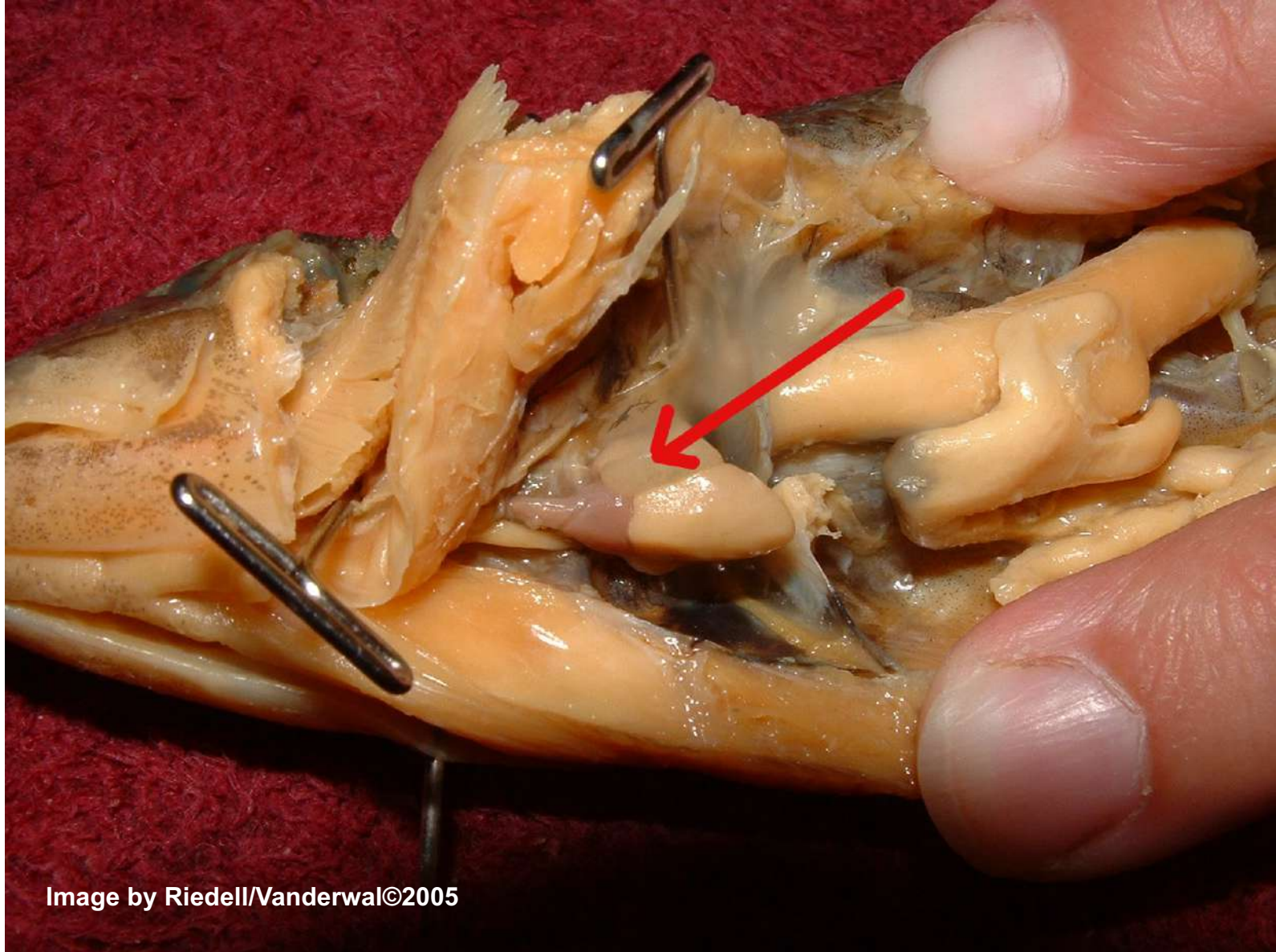


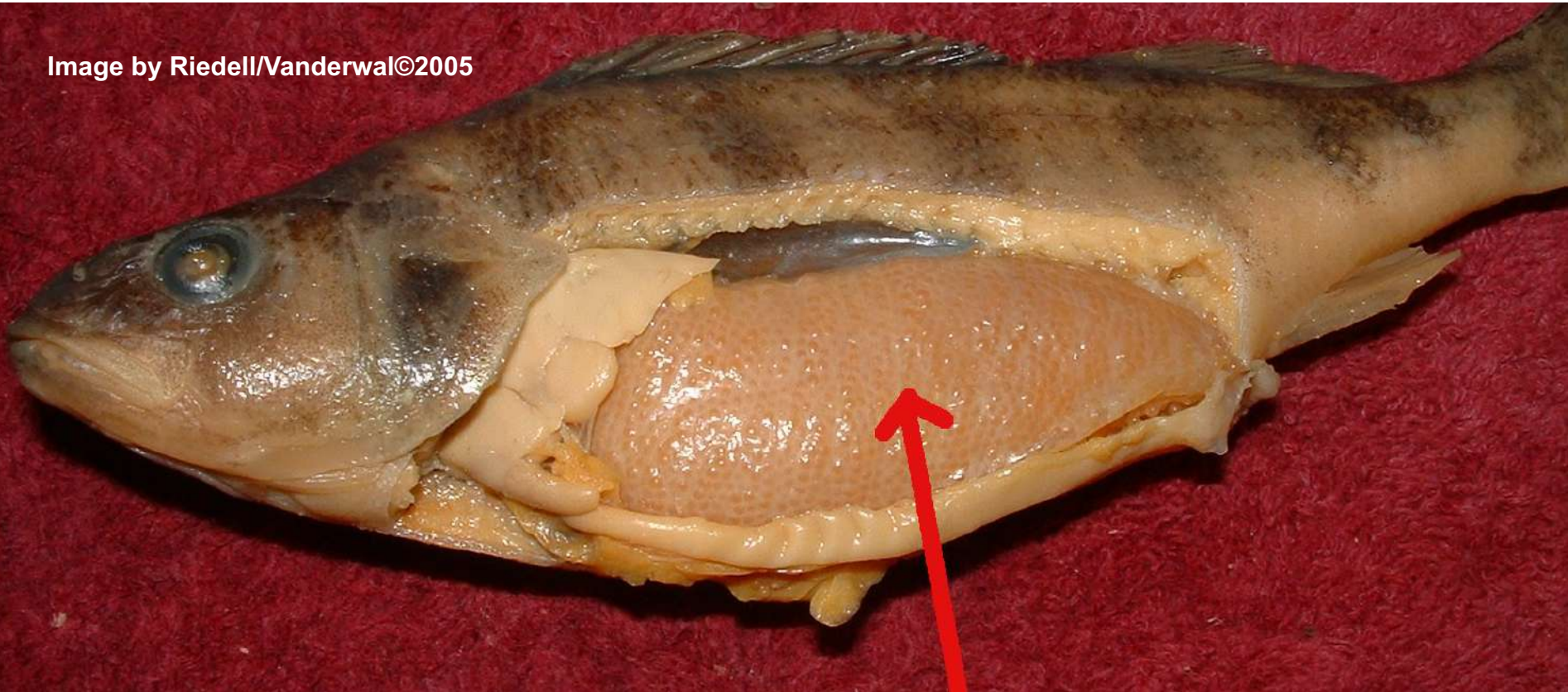
Image by Riedell/Vanderwal©2005

The arrow is pointing at the atrium

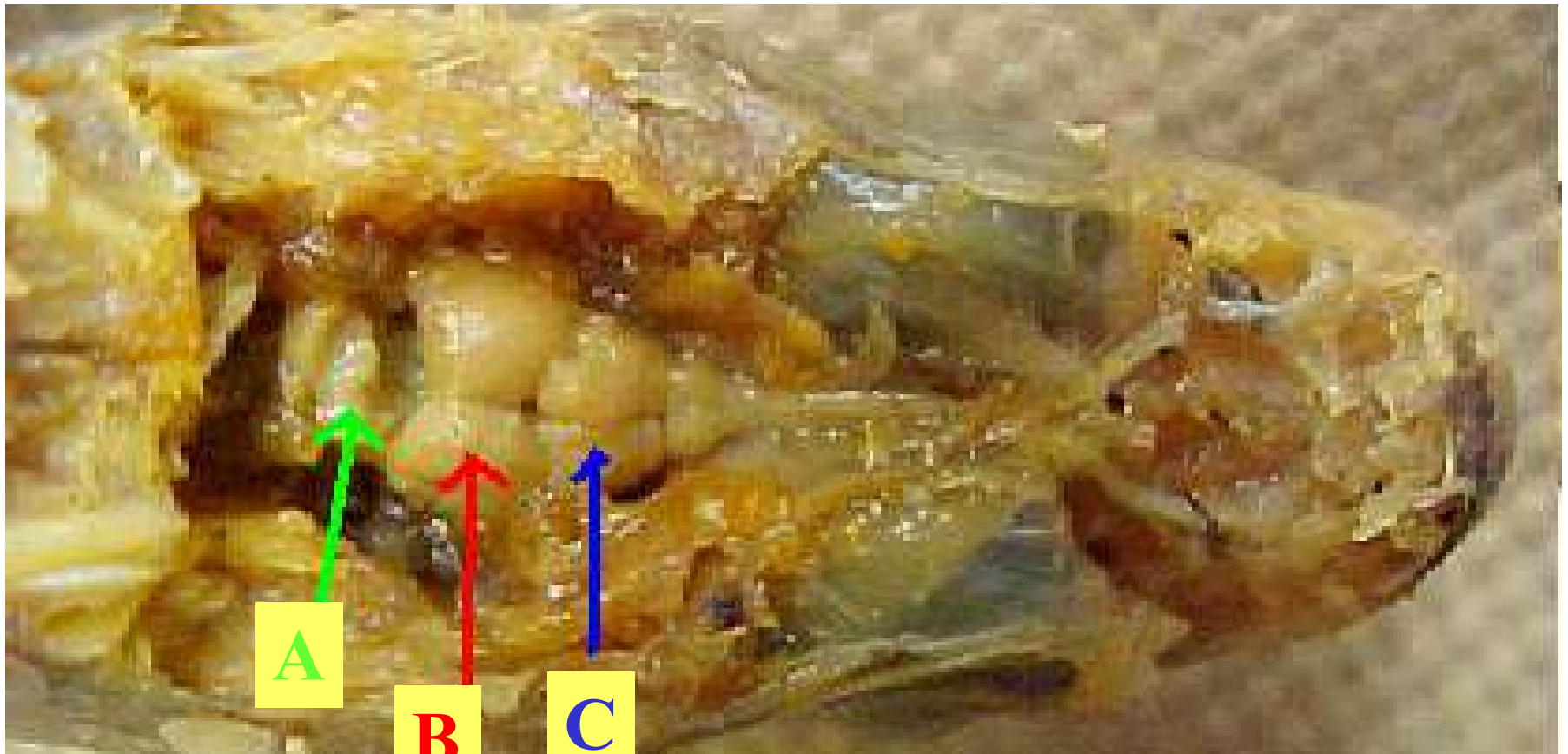


This fin is the
Anterior dorsal
fin.

Image by Riedell/Vanderwal©2005



This orange structure is the ovary
Its function is to Make eggs
It is part of the reproductive system.



A =

CEREBELLUM

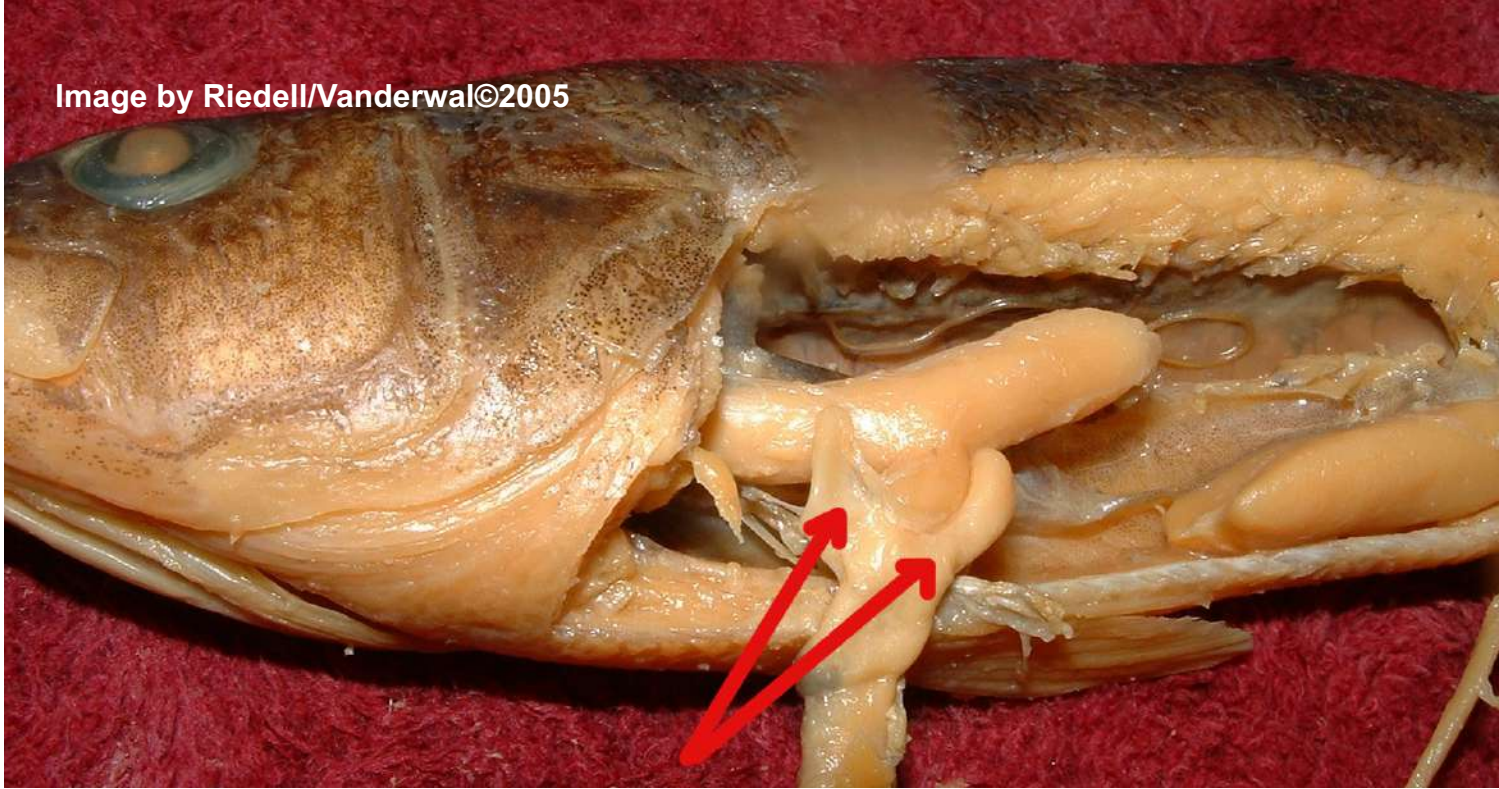
B =

OPTIC TECTUM

C =

CEREBRUM

Image by Riedell/Vanderwal©2005



These pouches are
Pyloric caeca

Their function is to
Contain microorganisms to digest plants

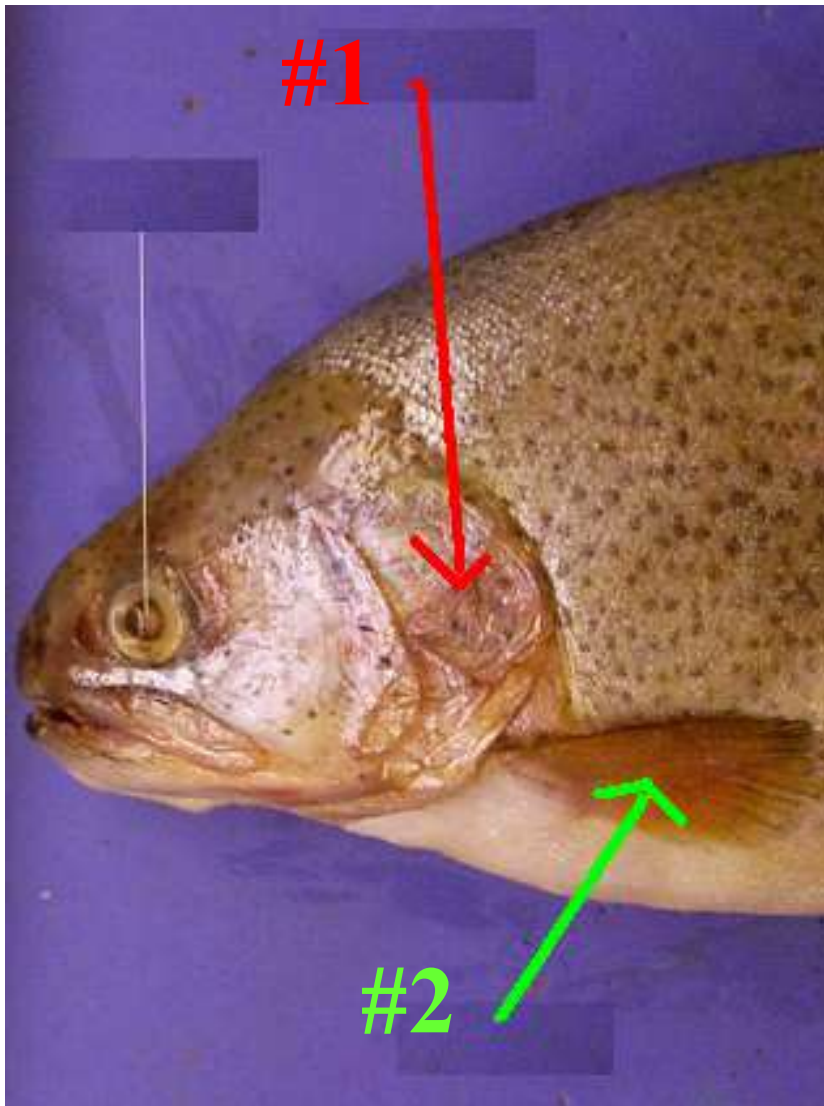
Image by Riedell/Vanderwal©2005



This fish is a male
female male



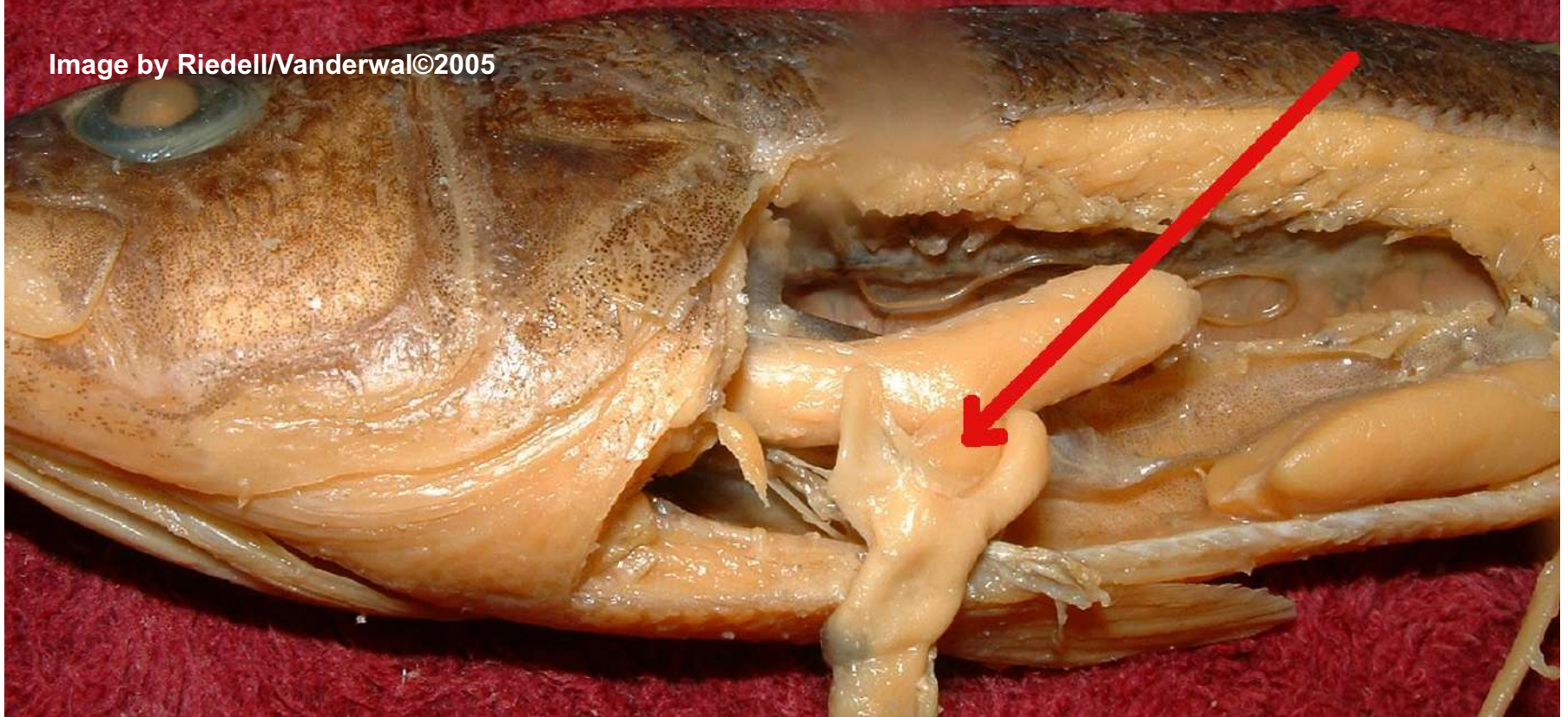
This fin is the
Posterior dorsal
fin.



#1 = operculum

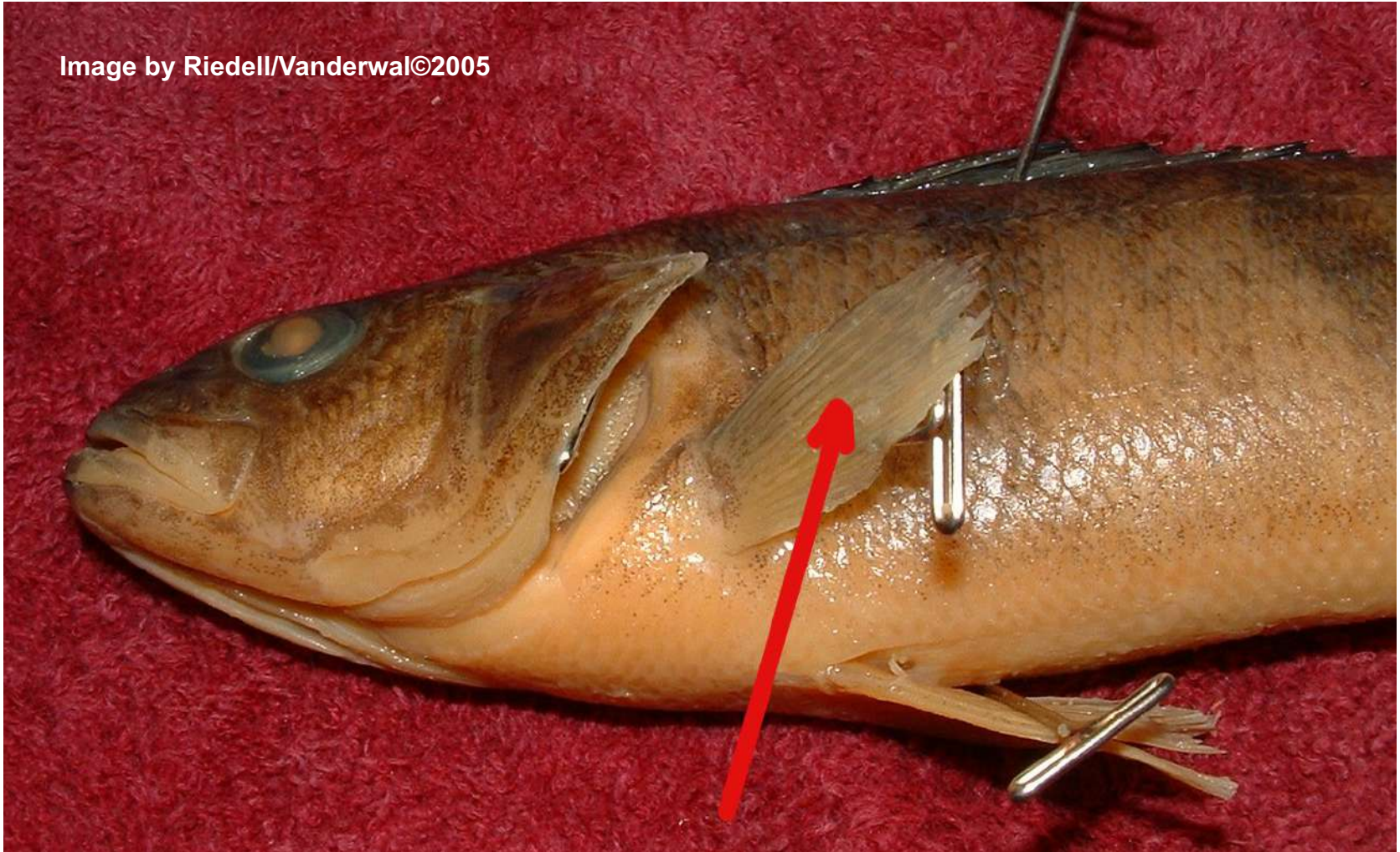
#2 = Pectoral fin

Image by Riedell/Vanderwal©2005



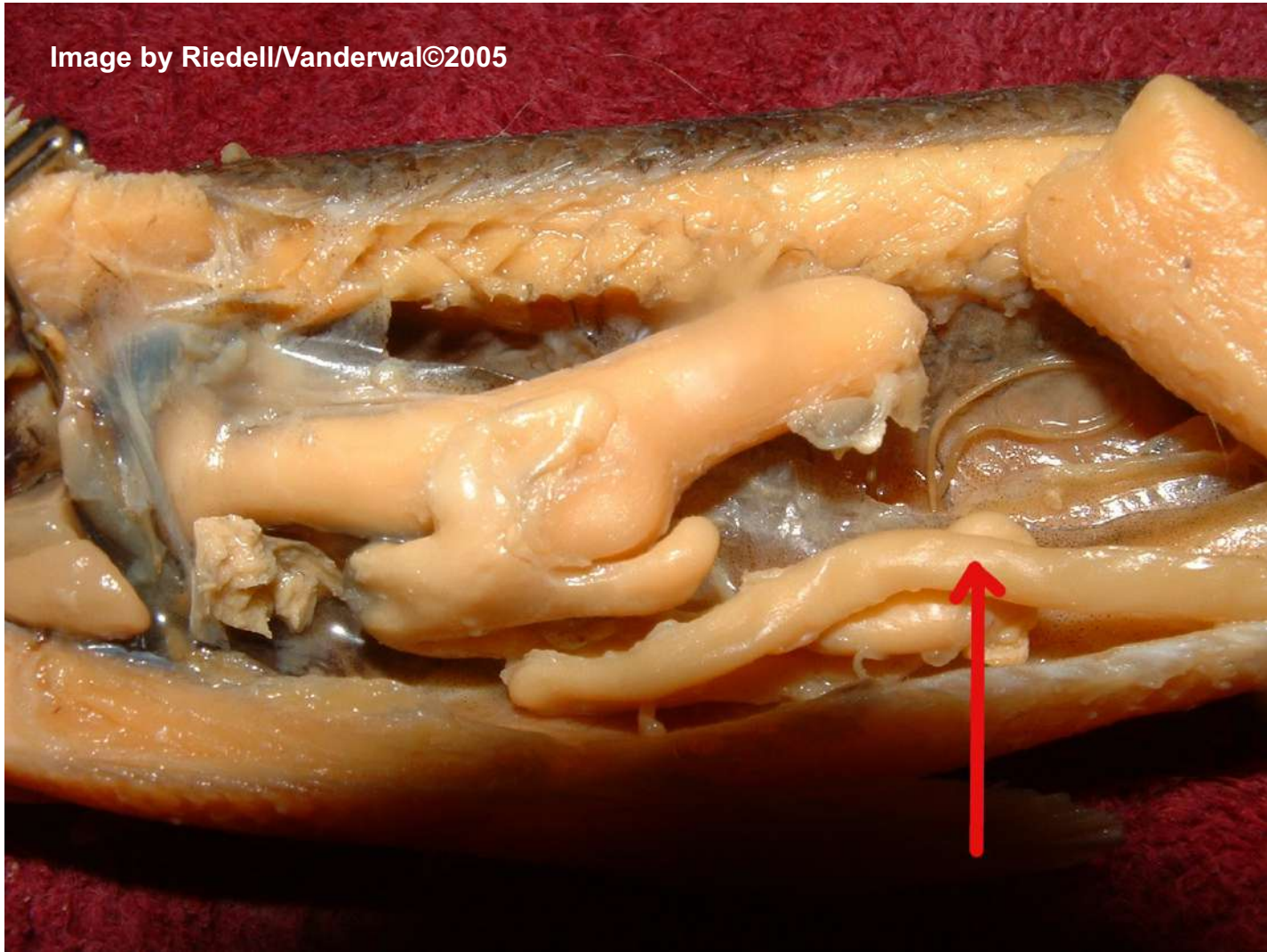
**This part of the intestine where the
pouches are attached is called the
duodenum**

Image by Riedell/Vanderwal©2005



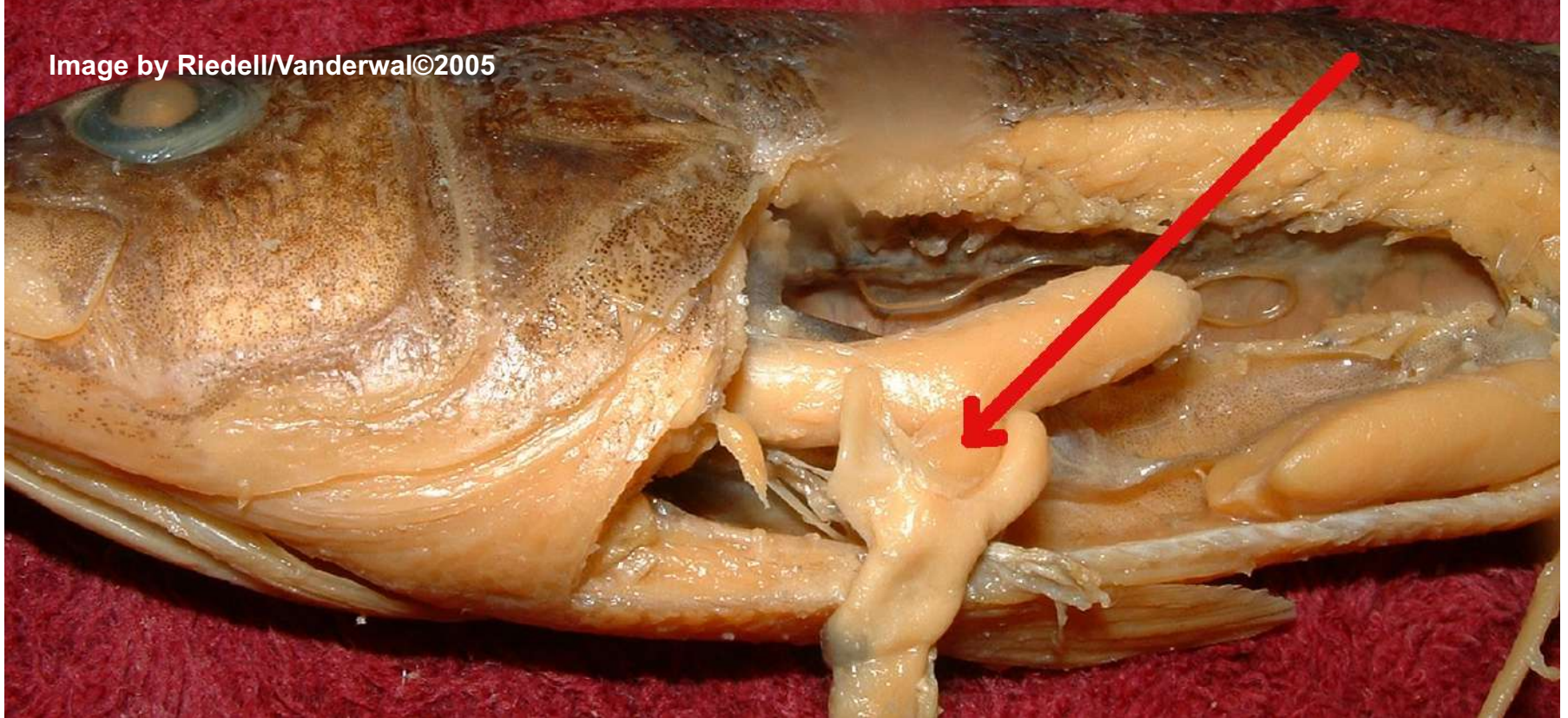
This is the Pectoral fin.

Image by Riedell/Vanderwal©2005



This is the Intestine

Image by Riedell/Vanderwal©2005



Name the two digestive enzymes that are added here.

Bile and trypsin



This organ is the gills

Give a function. **Gas exchange, excrete nitrogen waste; osmoregulation**

Image by Riedell/Vanderwal©2005



This gas filled sac is the Swim bladder

Its function is to control buoyancy

Image by Riedell/Vanderwal©2005



This is the caudal fin.

<http://www.flushing.k12.mi.us/srhigh/tippetl/biology/perch/index.html>



This is the Pelvic fin.

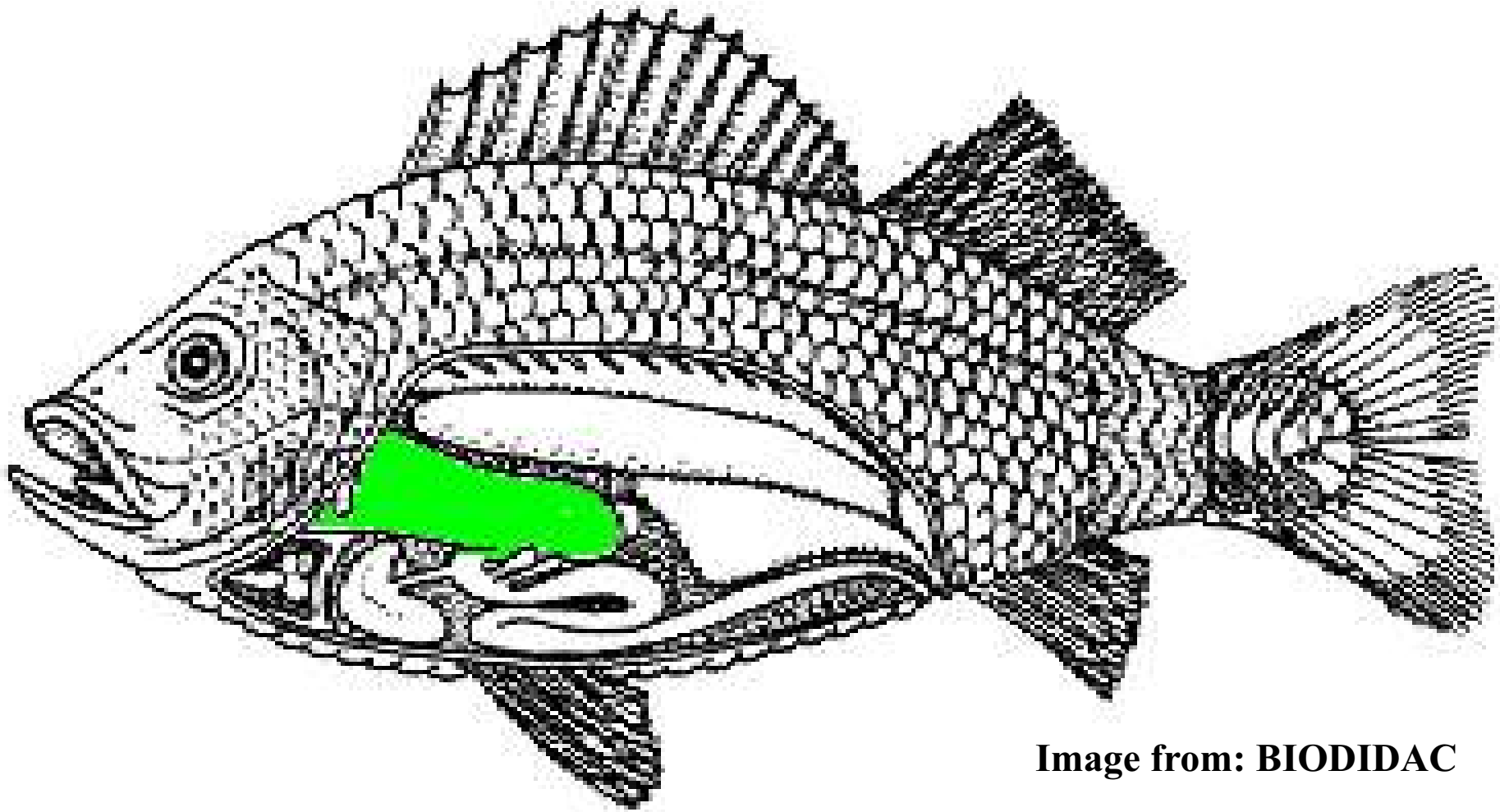


Image from: BIODIDAC

This colored organ is the
STOMACH

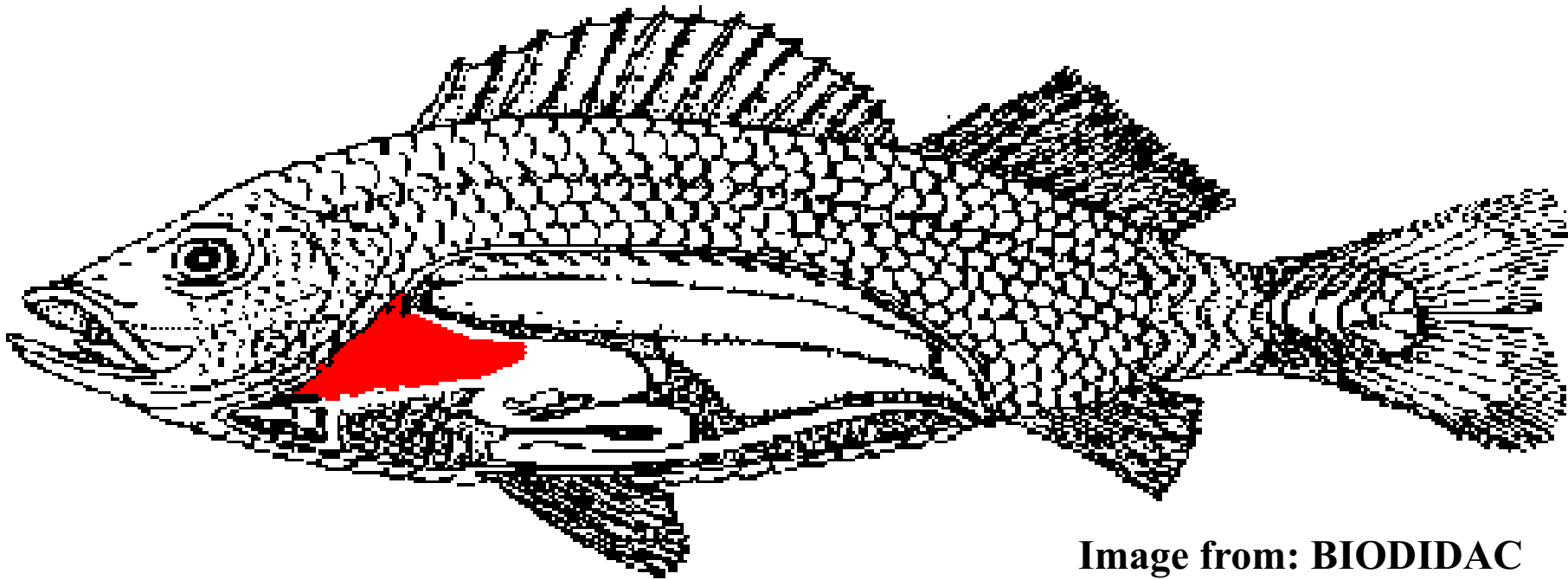
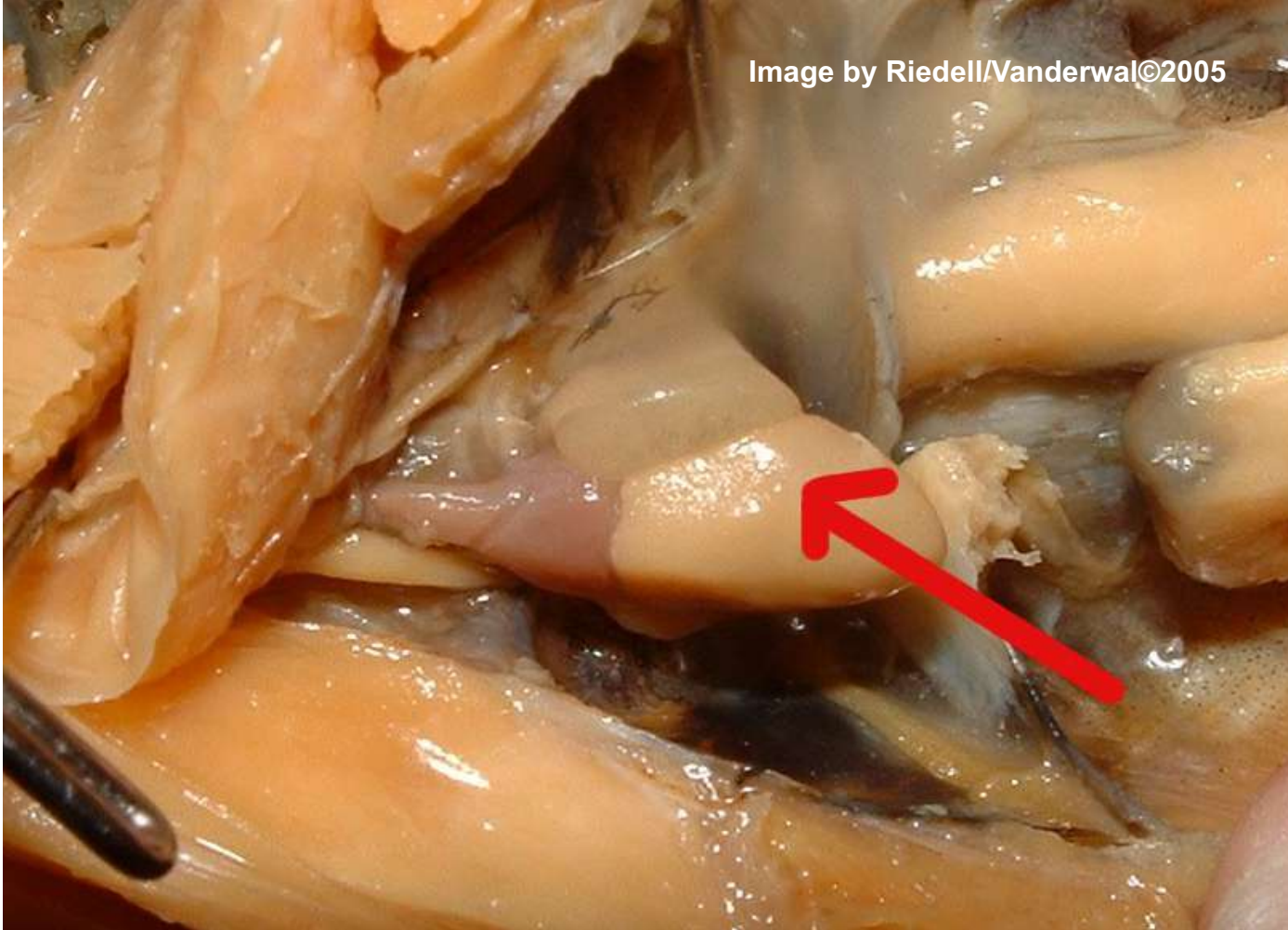


Image from: BIODIDAC

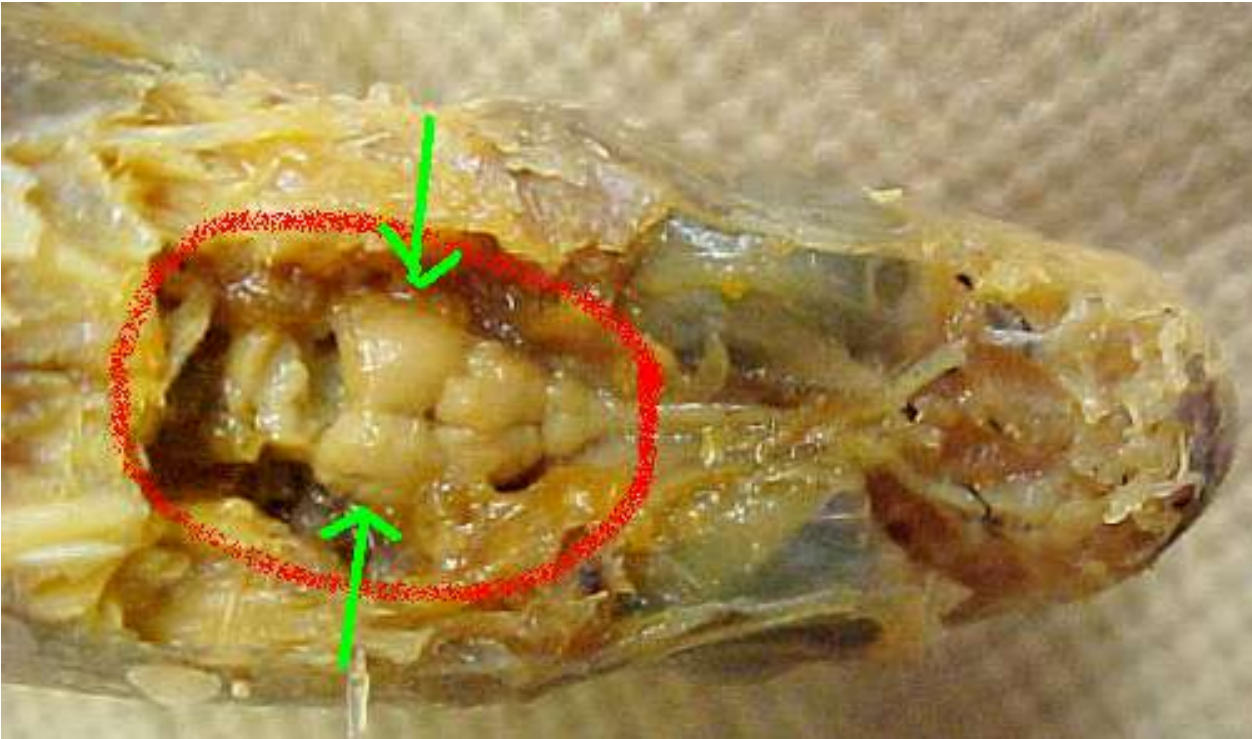
**This triangular colored organ is the
LIVER**

Give 2 functions:

**Make bile, store vitamins, store glycogen,
process toxins for kidneys**



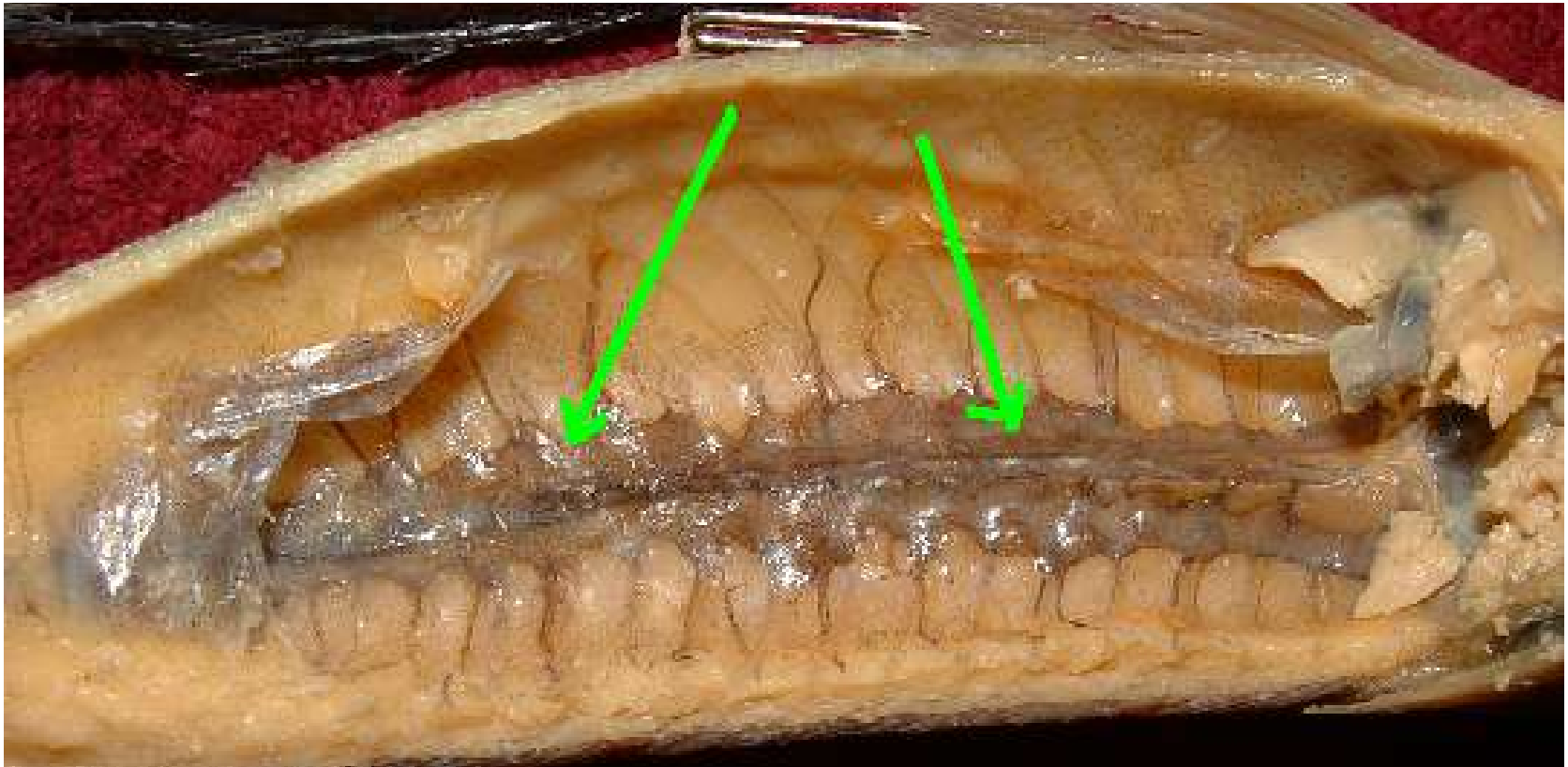
This part of the heart is the
ventricle



**This largest section of the brain =
optic tectum**

Give a function:

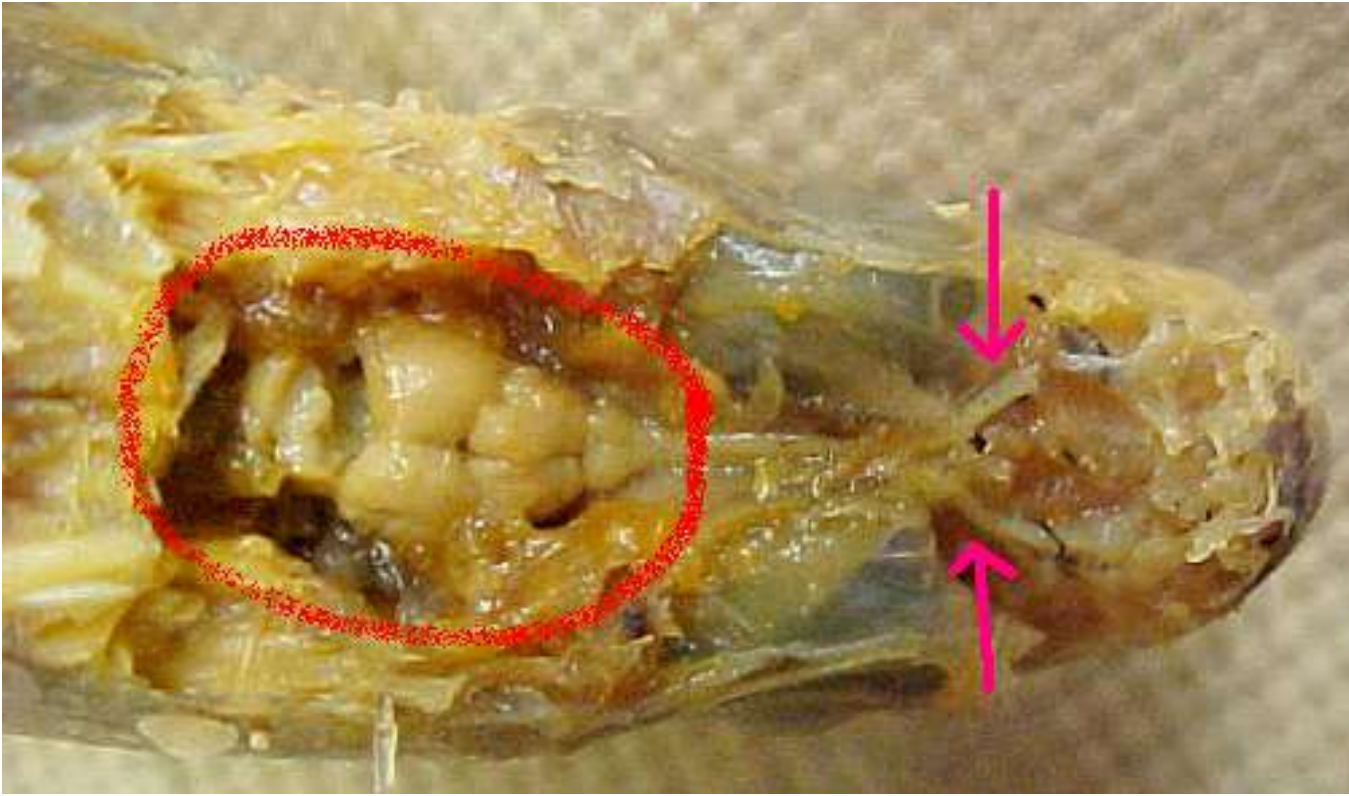
**Receives & processes info from visual,
auditory, and lateral line systems**



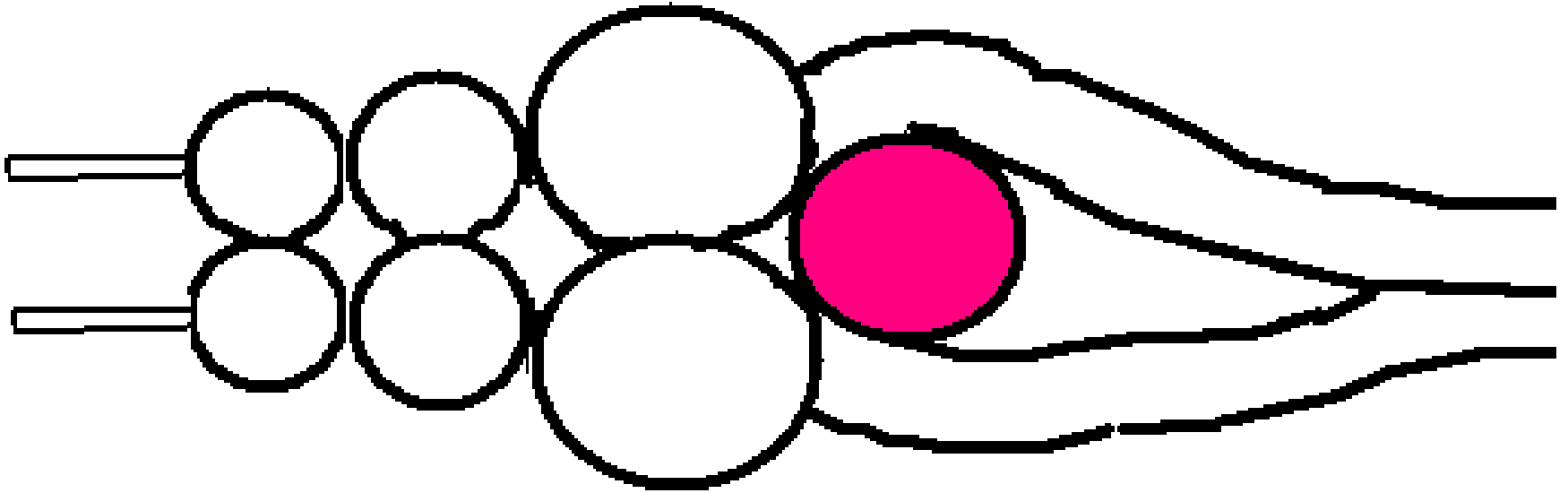
This dark area is the kidneys
Give a function **Excrete nitrogen waste;**
Give the body system **excretory**



This part of the heart is the
ventricle

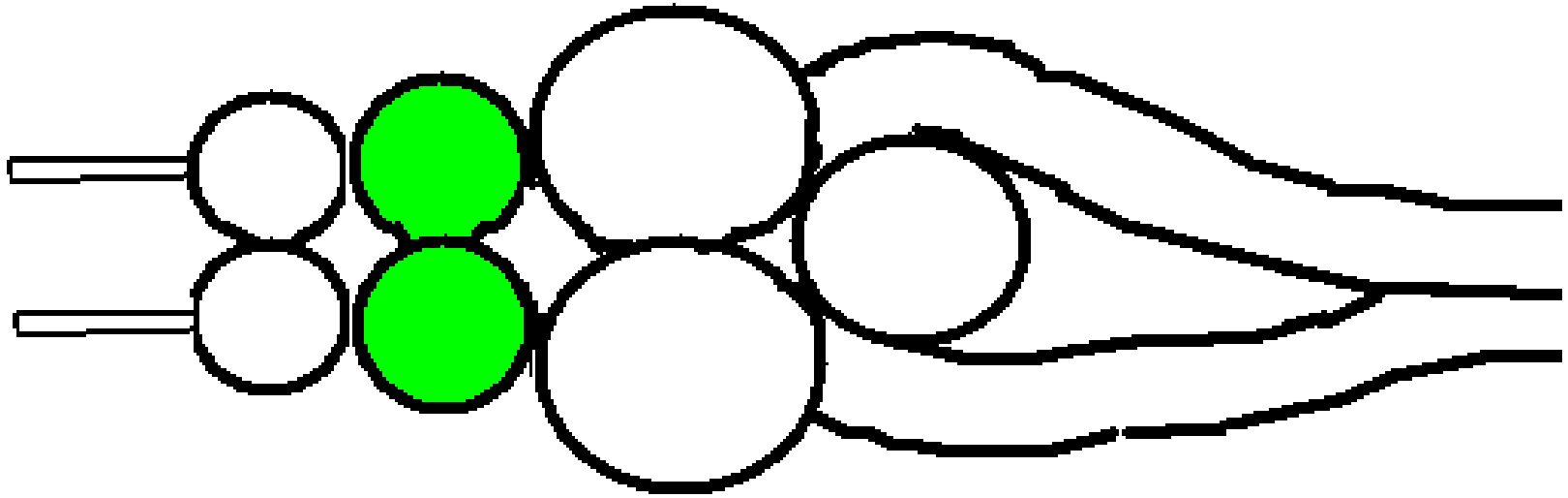


These nerves that connect the brain to the nostrils are the olfactory nerves.



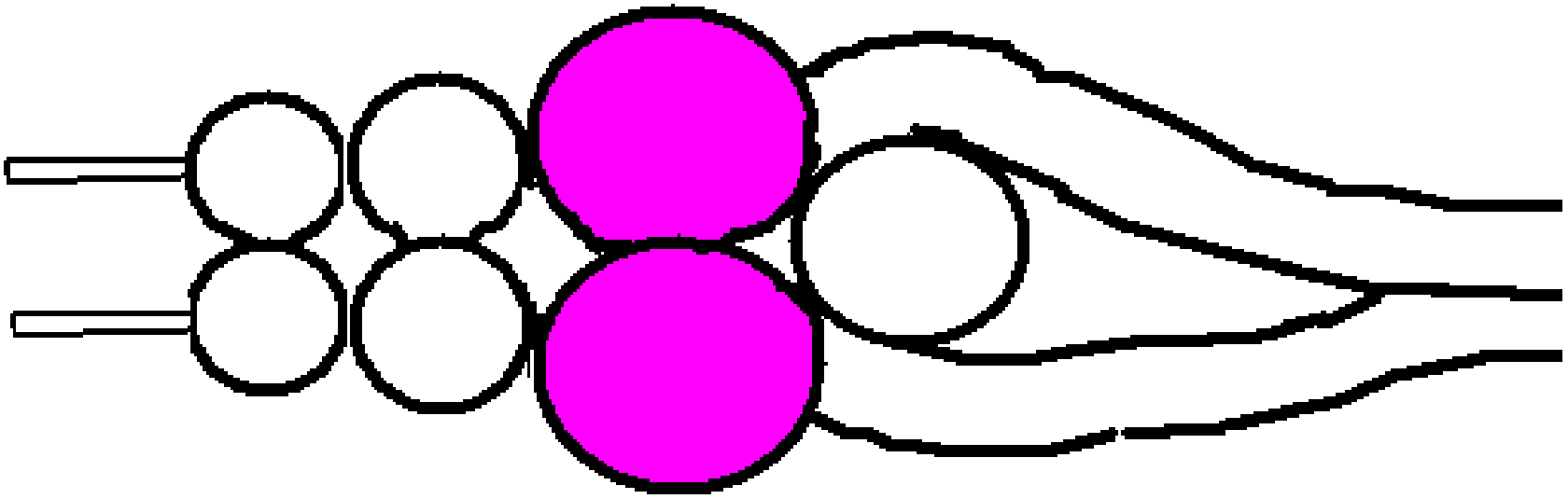
This brain part is the cerebellum

It controls Motor coordination and balance



This brain part is the cerebrum

Its function is Coordinate info from
all other parts
“HIGHER thinking”



These brain parts are the Optic tectum

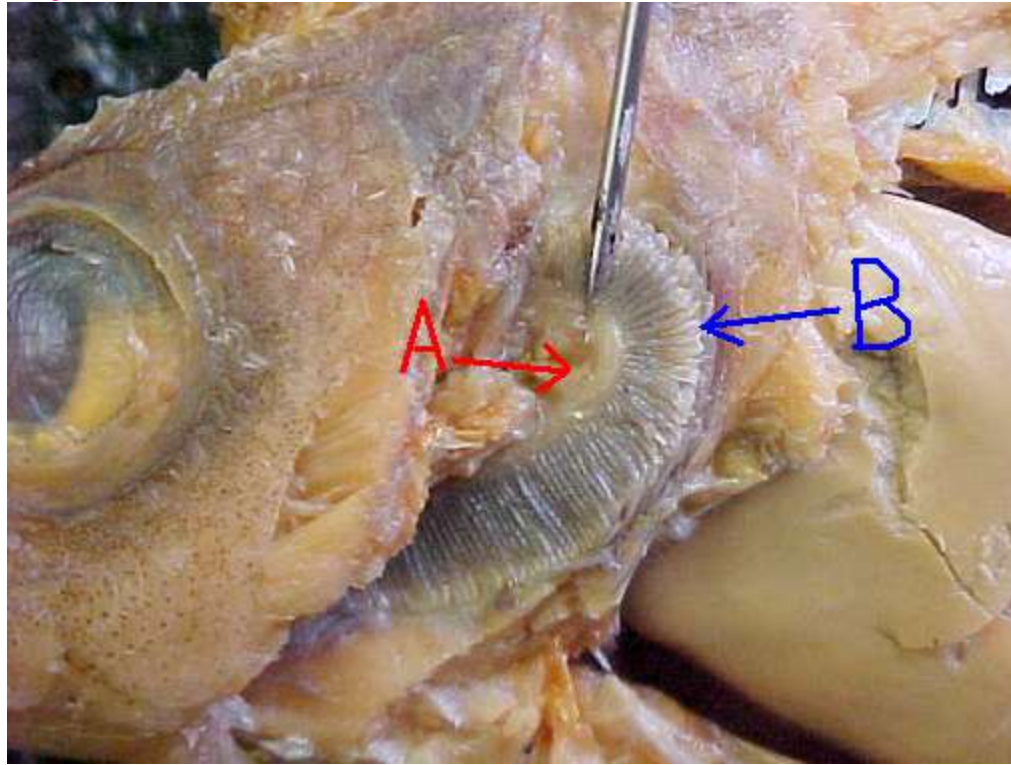
They receive info about
Vision, hearing (auditory) & lateral line.



Image from:

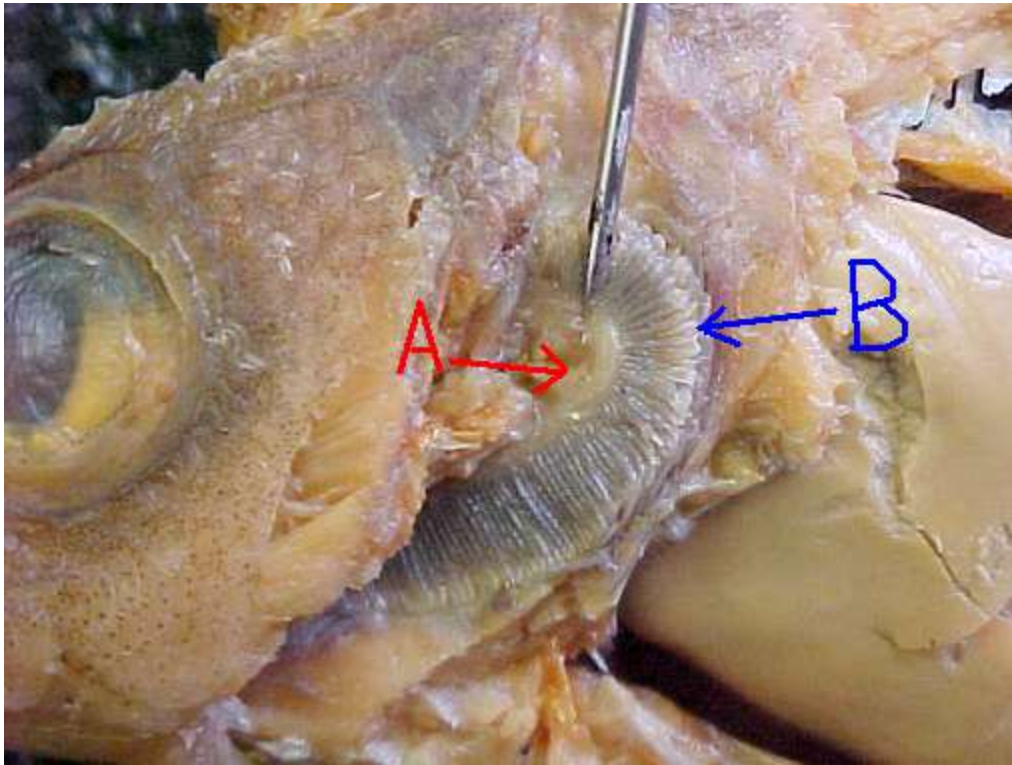
<http://www.flushing.k12.mi.us/srhigh/tippetl/biology/perch/index.html>

Which 2 openings are found here?
Anus & urogenital pore



A (C shaped bone) = Gill arch

B = Gill filament



Name 3 functions part B above

Exchange gases

Excrete nitrogen waste (ammonia)

Osmoregulation (water/ion balance)



© 2004 C. O. Houlihan

**Blood inside this vessel is LOW
oxygen blood. HIGH LOW**



Blood inside this vessel is on its way to the
gills.

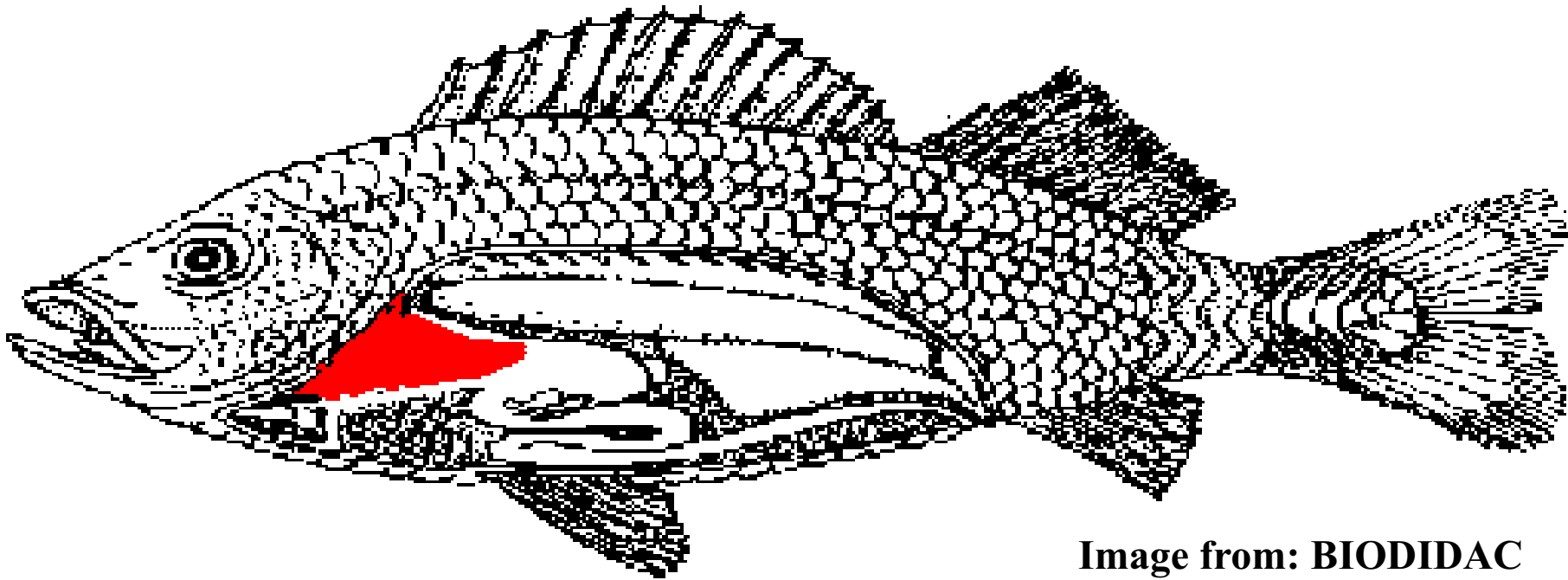
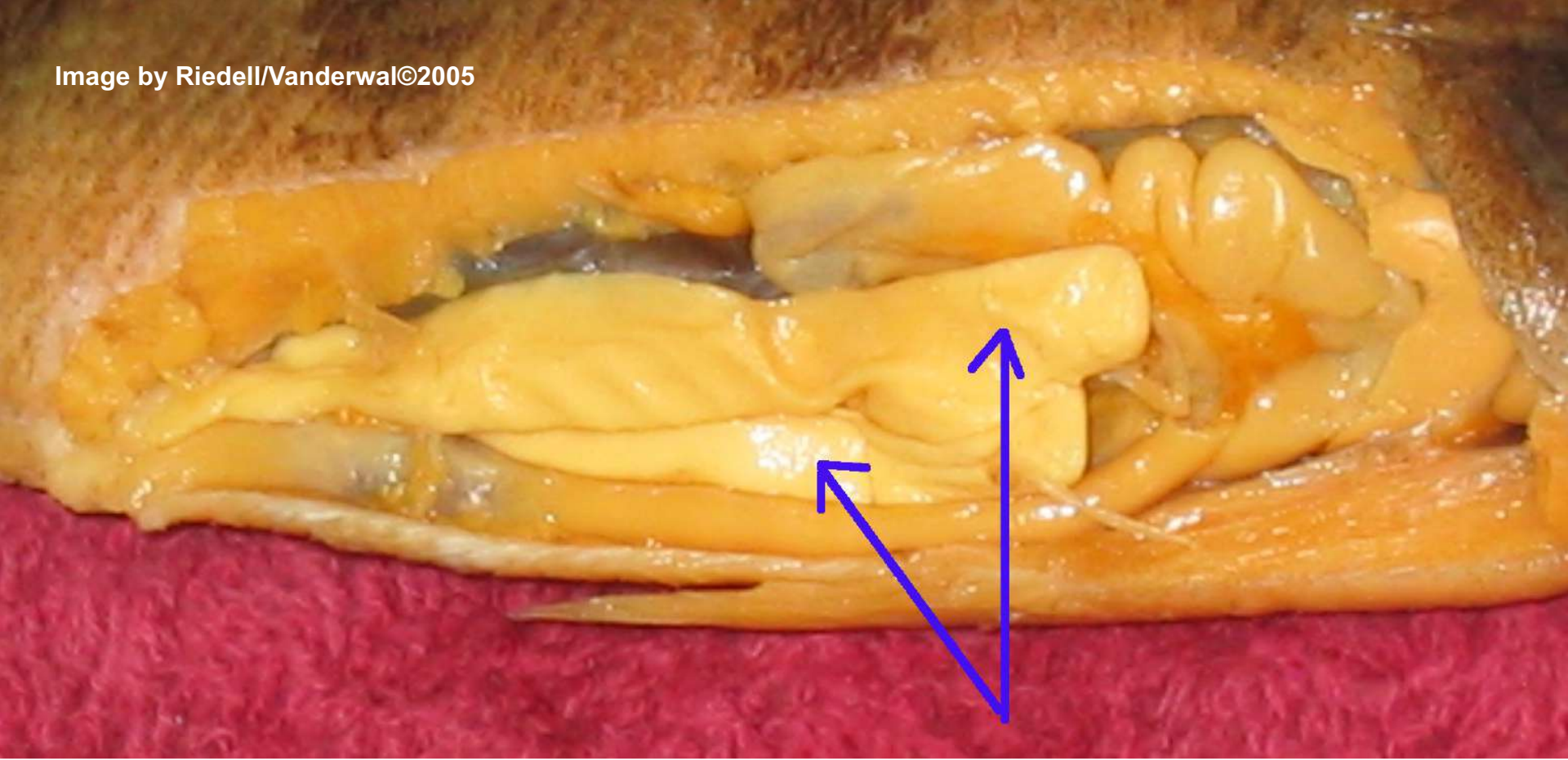


Image from: BIODIDAC

**This triangular colored organ is the
LIVER**

Give 2 functions:

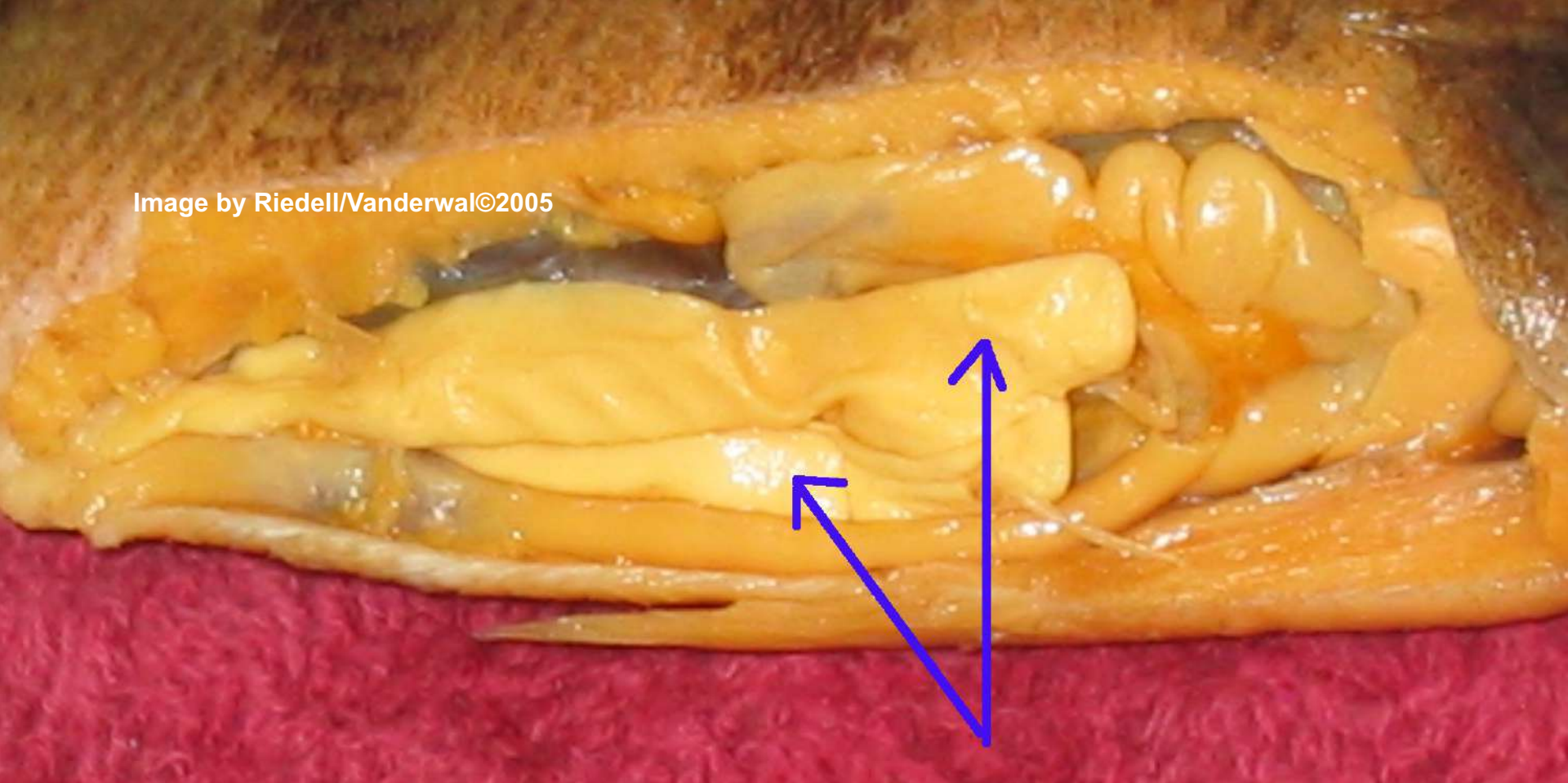
**Make bile, store vitamins, store glycogen,
process toxins for kidneys**



Thes light colored structures are the
testes

The function is to **Make sperm**

Image by Riedell/Vanderwal©2005

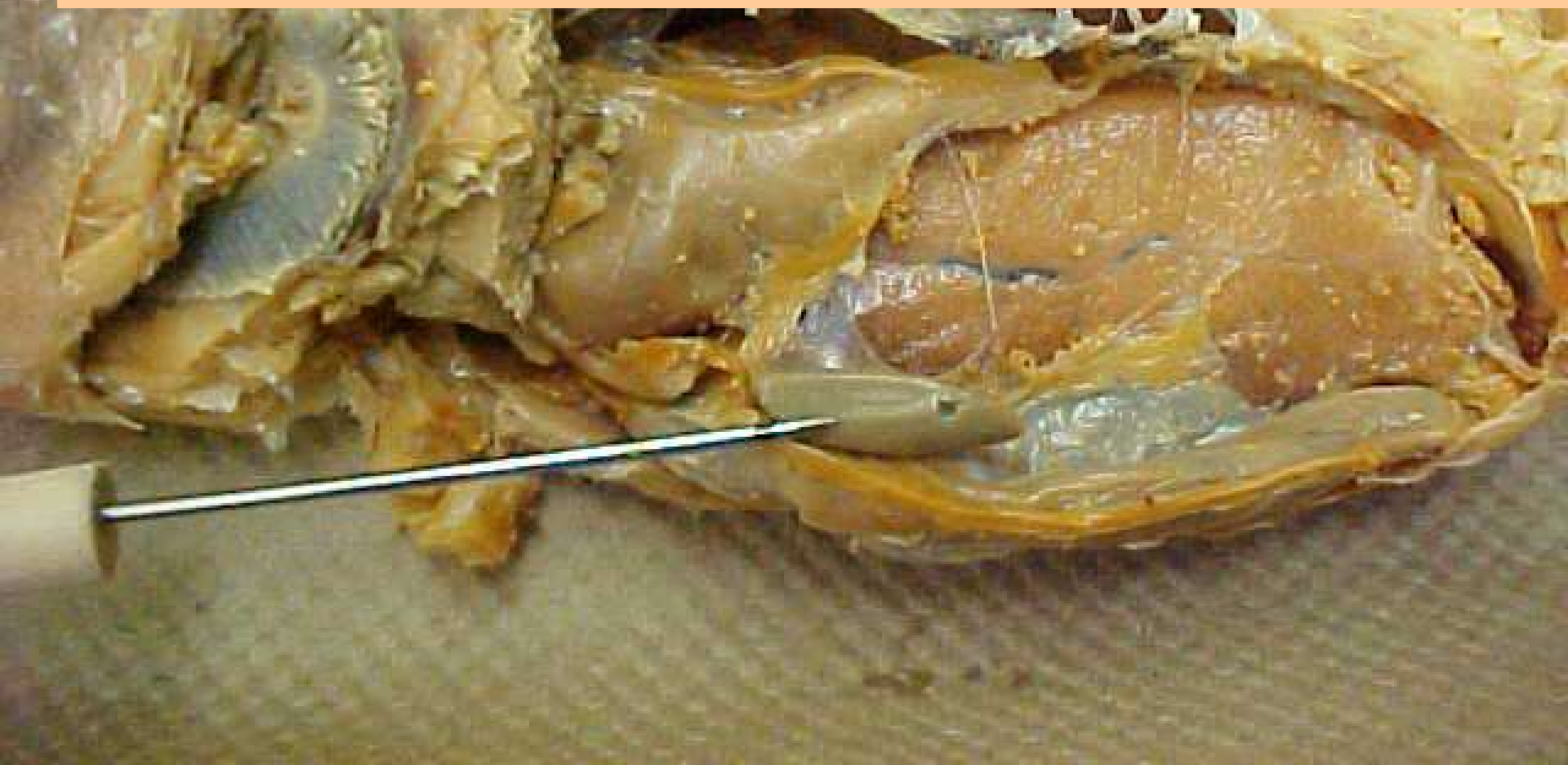


Name the opening these light colored structures use as an exit.

Urogenital pore

This dark colored strip next to the intestine is the SPLEEN

Its function is to Make, store, process RBC'S



What's the part?

1st part of intestine where
bile and trypsin are added

duodenum

Causes cells to take up
glucose from blood and
store it as glycogen

insulin

Enzyme that helps
break down fats

bile

What's the part?

Stores urine Urinary bladder

Enzyme that causes cells to release
stored glucose into
the bloodstream glucagon

Digestive enzyme that helps
break down proteins trypsin

What's the part?

Controls buoyancy _____ **Swim bladder**

Makes bile _____ **liver**

Makes trypsin _____ **pancreas**

Stores bile _____ **Gall bladder**

Makes, stores, processes
red blood cells _____ **spleen**

What's the part?

Exit for feces **anus**

Senses vibration & **Lateral line**
water pressure

 operculum
Covers & protects gills

 capillaries
Blood vessels where
gas, nutrient, and waste
exchange happens

What's the part?

Blood vessels that carry
blood away from the heart arteries

Stores glycogen & vitamins liver

Bone that protects the brain cranium

Blood vessels that carry
blood back to heart from body veins

Pumping chamber of heart ventricle

What's the part?

Molecule used by animal cells to store glucose glycogen

Removes nitrogen waste from blood and makes urine kidneys

Fingerlike extensions that increases surface area villi
INSIDE the intestine

Makes acid and starts digestion stomach

What's the part?

Make sperm testes

Receives and processes info from
visual, auditory (hearing) &
lateral line systems Optic tectum

Contain bacteria to digest plants
Pyloric caeca

Provide protection to skin
& reduce water resistance scales

What's the part?

Receives and processes info
about smell _____

Olfactory lobes

Controls motor function;
muscle coordination & balance _____

cerebellum

Coordinates info from
other parts; Higher thinking
(memory; learning; reasoning) _____

cerebrum

Tubules that carry sperm
from testes to exit _____

Vas deferens

What's the part?

Receives and processes info
about smell _____ **Olfactory lobes**

Controls motor function;
muscle coordination & balance _____ **cerebellum**

Coordinates info from
other parts; Higher thinking
(memory; learning; reasoning) _____ **cerebrum**

Tubules that carry sperm
from testes to exit _____ **Vas deferens**

What's the part?

Relays sensory info from body;
Controls autonomic internal organs

Medulla oblongata

Carries nerve signals to
and from brain and body

Spinal cord

endoskeleton

Skeleton INSIDE the body

What's the part?

Collecting space for blood
returning to the heart

Sinus venosus

Smooths the flow of
blood leaving the heart

Conus arteriosus

Type of nitrogen waste
excreted by fish

ammonia

What's the part?

Receives blood from
sinus venosus and sends
it to ventricle

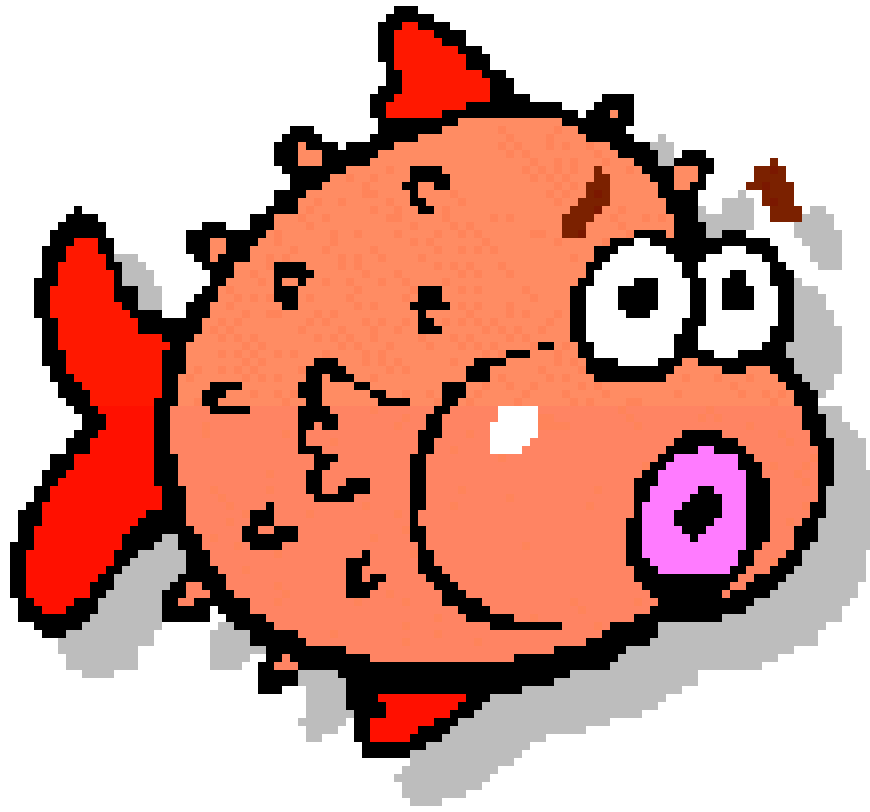
atrium

Absorbs nutrients &
collects digestive waste

intestine

Tube that connects
pharynx to stomach

esophagus



THE END