

# **King County's Changing Demographics**

## **Investigating Our Increasing Diversity**

Chandler Felt, Demographer

King County Office of Performance, Strategy and Budget

Updated in 2016 from June 2013 County Council Presentation

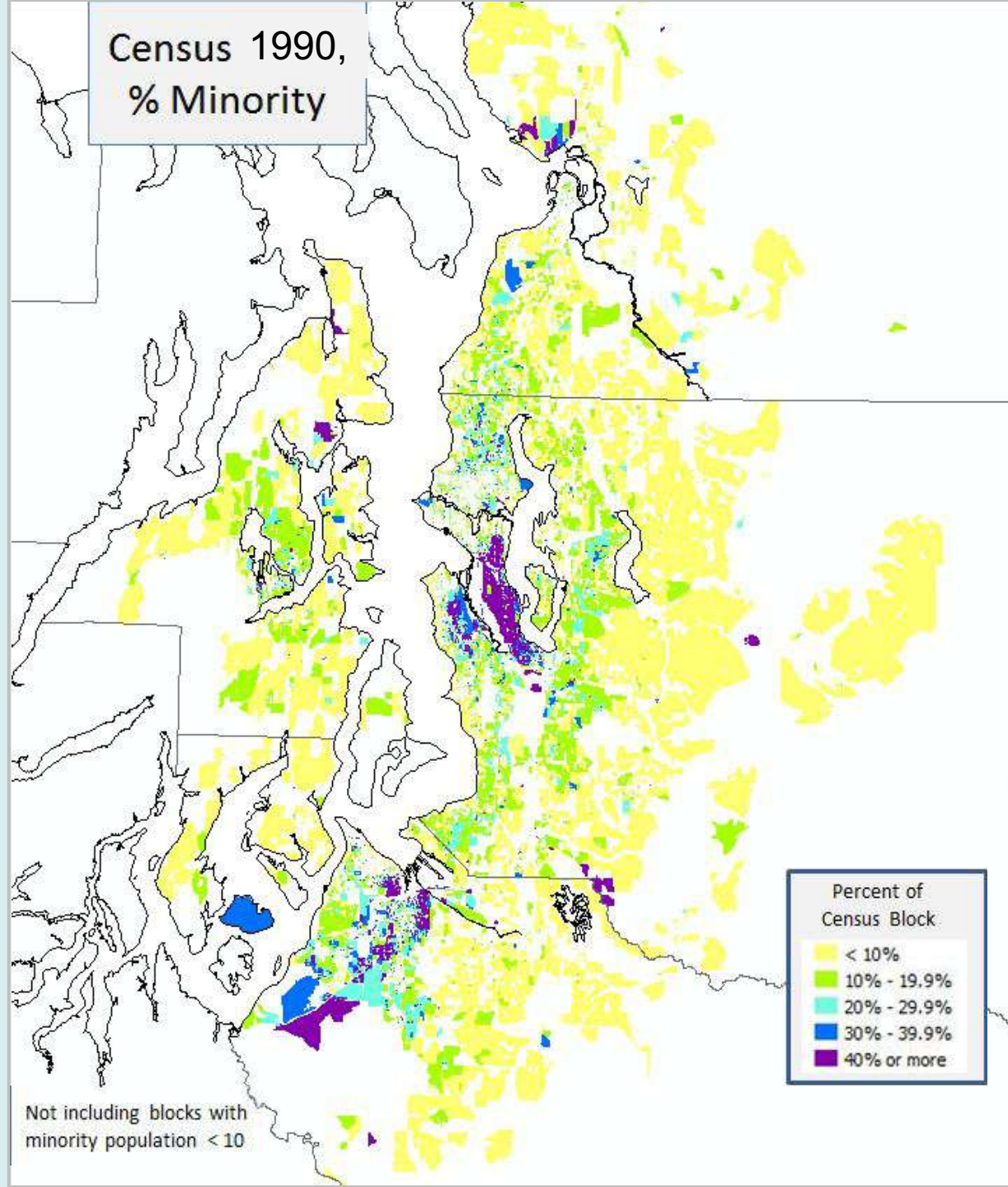
# A note on sources

- Decennial Census: 1990, 2000, 2010
- American Community Survey (ACS)
  - Most recent detailed data, 2011-15
- Reliability of data
  - ACS accuracy is not so good
- Margins of Error

# King County Population Growth, 2000 - 2016

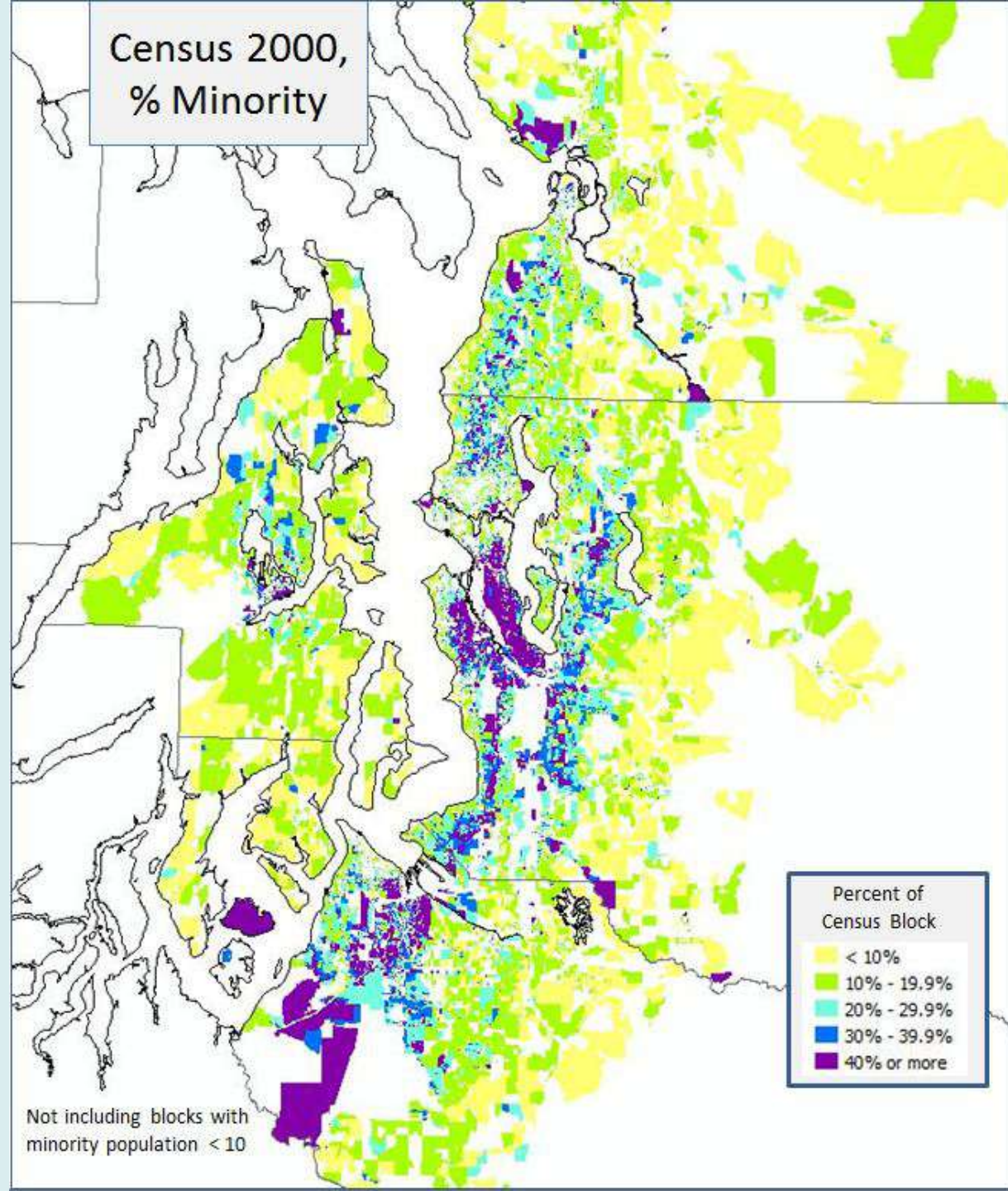
- King County now more than 2.1 million people
- Gained 360,000 persons since 2000
- Gain: more than population of Tacoma + Everett
- Population grew 21%, while job numbers remained flat (2000-2010), then jumped
- Data we're reporting are from 2010 Census and American Community Survey

The region's  
population is  
becoming  
increasingly  
diverse:  
1990

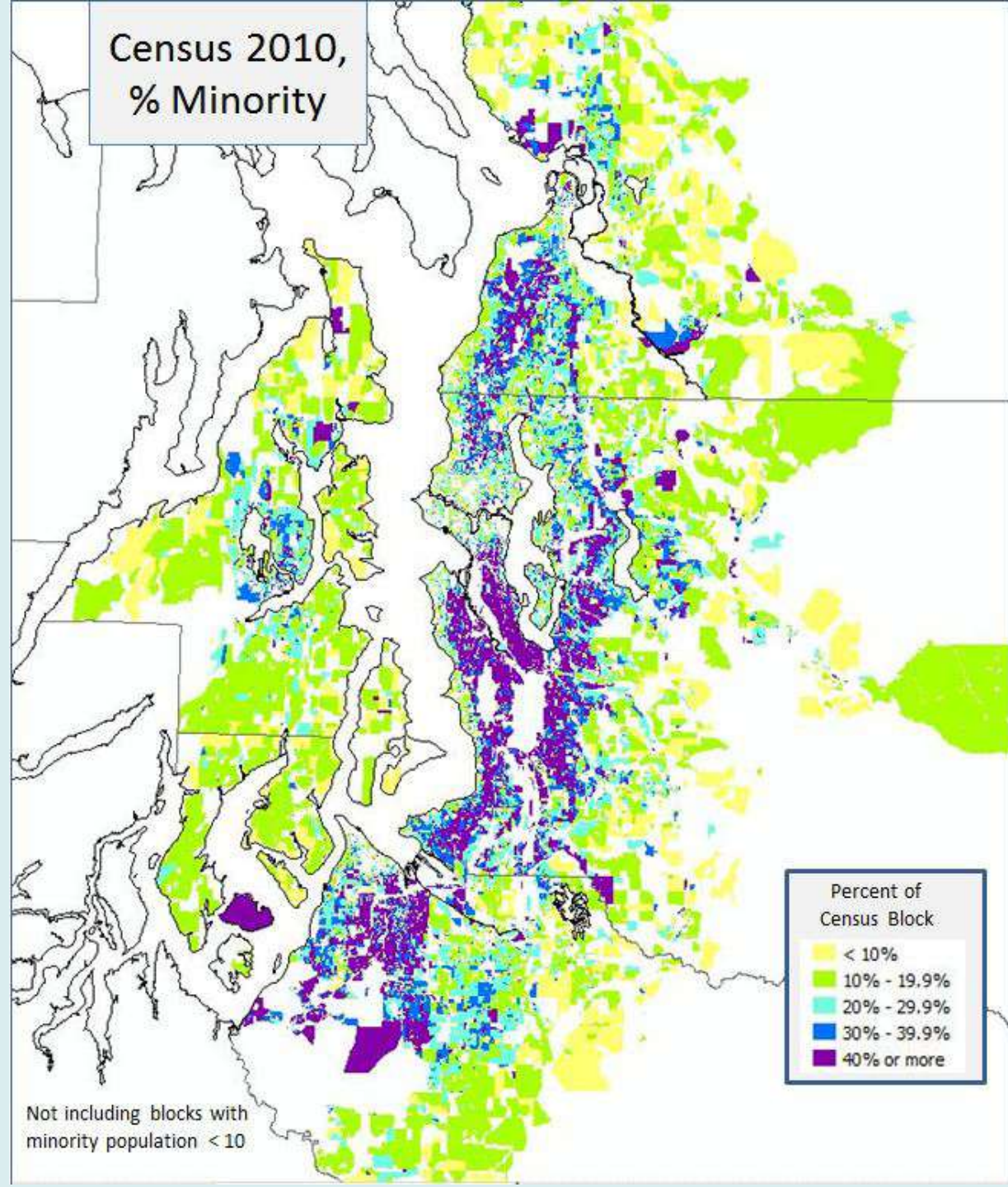




The region's  
population is  
becoming  
increasingly  
diverse:  
2000



The region's  
population is  
becoming  
increasingly  
diverse:  
2010





# Population diversity: compare King County to the U.S.



## DIVERSE AND GLOBAL COMMUNITY

### PEOPLE OF COLOR



### FOREIGN BORN



### PEOPLE (5+ YEARS OLD) WHO SPEAK A LANGUAGE OTHER THAN ENGLISH AT HOME



# Appearance of Equity

At a glance, King County outperforms the U.S. on socio-economic indicators



## GOOD HEALTH

### OBESSE ADULTS

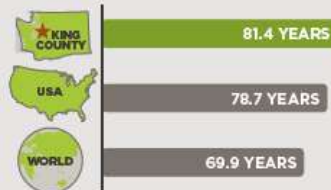


### ADULTS CURRENTLY SMOKING



## HIGH LIFE EXPECTANCY

### LIFE EXPECTANCY AT BIRTH



## HIGHLY EDUCATED

### PEOPLE 25+ YEARS OLD WITH BACHELOR'S DEGREE OR HIGHER EDUCATION



## LOWER UNEMPLOYMENT

### UNEMPLOYMENT RATE (Dec. 2013)



## STRONG HOUSEHOLD INCOME

### MEDIAN HOUSEHOLD INCOME





# A Closer Look

## Income by Race & Place

### BY RACE

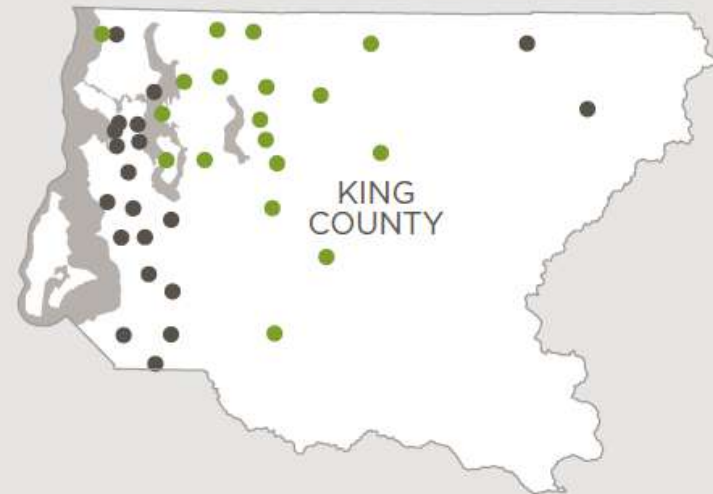
■ ABOVE KC AVERAGE

— KC AVERAGE: \$71,175

■ BELOW KC AVERAGE



### BY PLACE



# A Closer Look

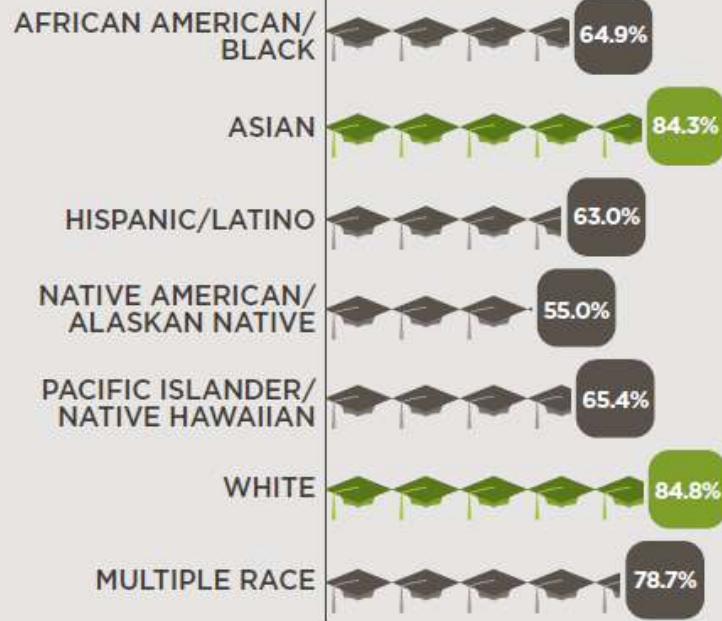
## Graduation Rates by Race & Place

### BY RACE

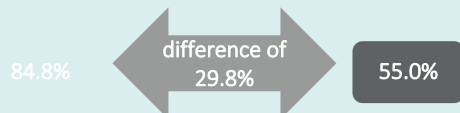
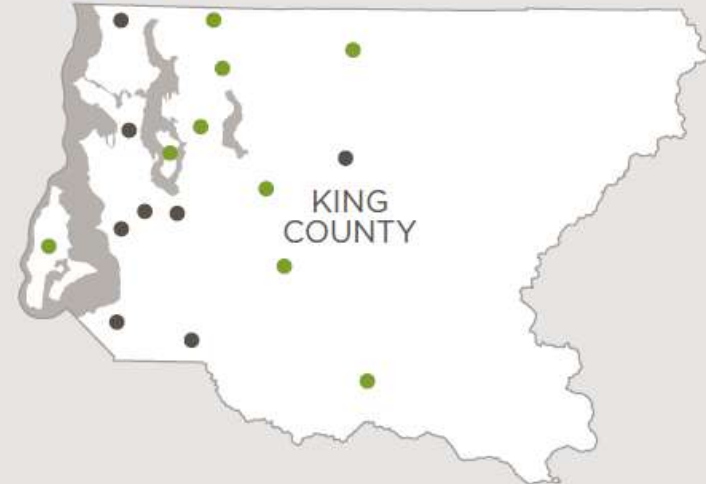
■ ABOVE KING COUNTY (KC) AVERAGE

— KC AVERAGE: 79.4%

■ BELOW KC AVERAGE

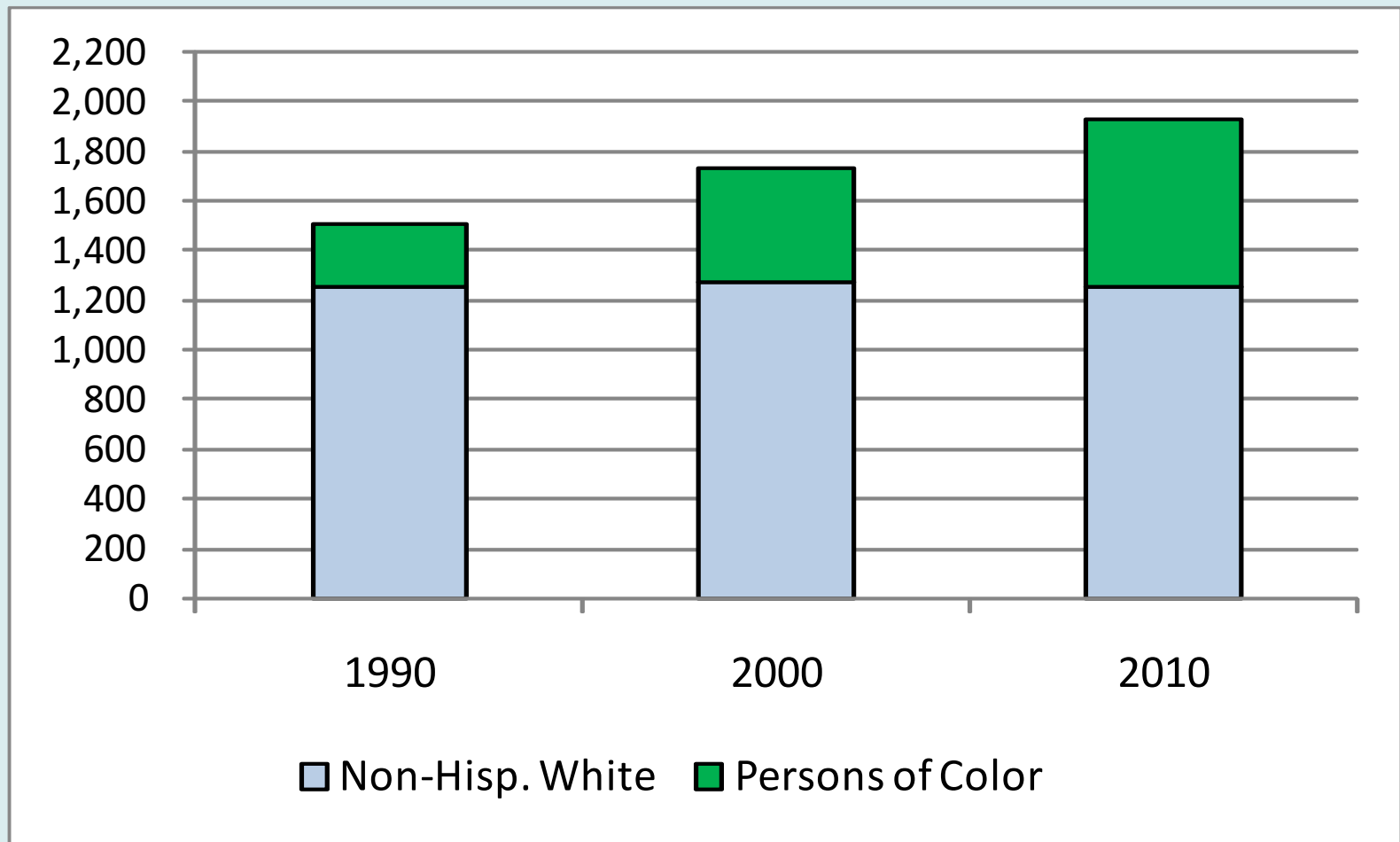


### BY PLACE



- How did we get into this complex pattern?
- *Why do the demographic characteristics of communities within the county differ so greatly?*

# 20 years of King County growth: increase is mostly persons of color

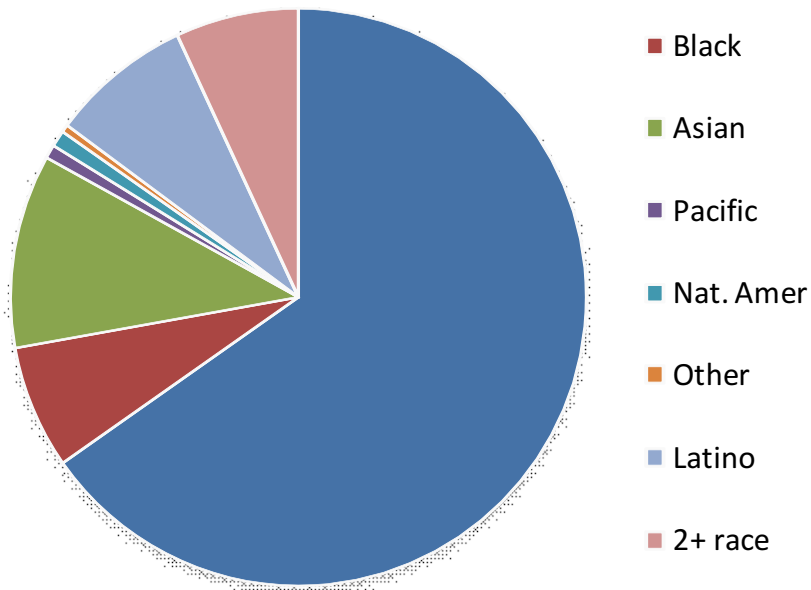




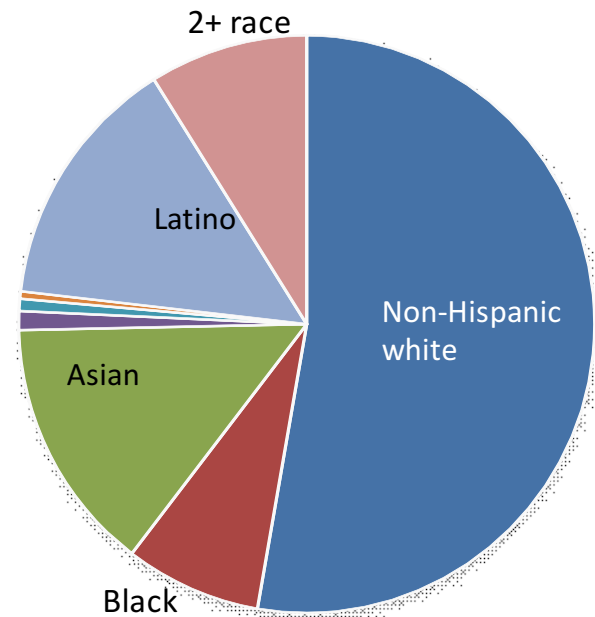
# Nearly half of King County kids are children of color

King County Children by Race / Ethnicity, 2000 and 2010

2000



2010



# Where is our growth coming from?

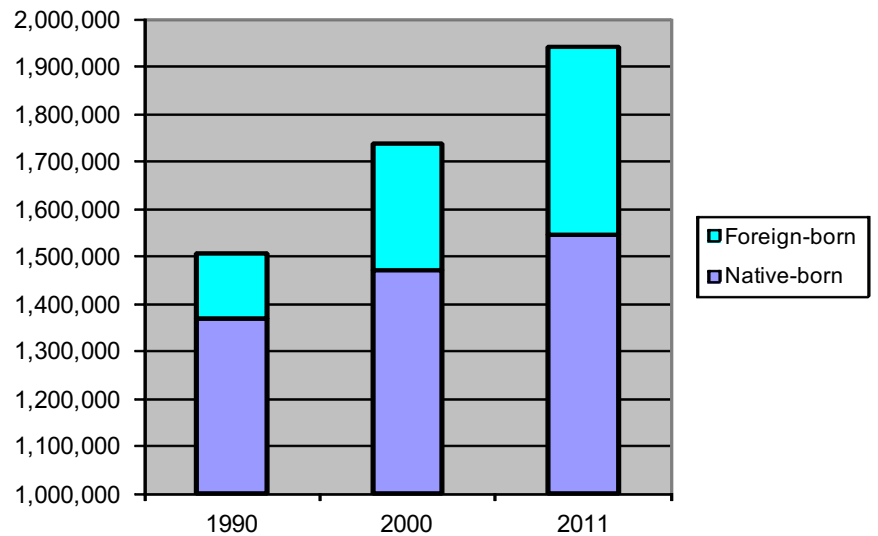
- Only half of population growth is from natural increase – our own children
- Before 1990, migration – e.g. California
- In recent years, **immigration** –
  - All parts of Asia
  - Latin America
  - Eastern Europe
  - Africa
  - Some from these regions, via US states

# More than half of our recent growth is immigration

**King County Population Trend  
by Place of Birth**

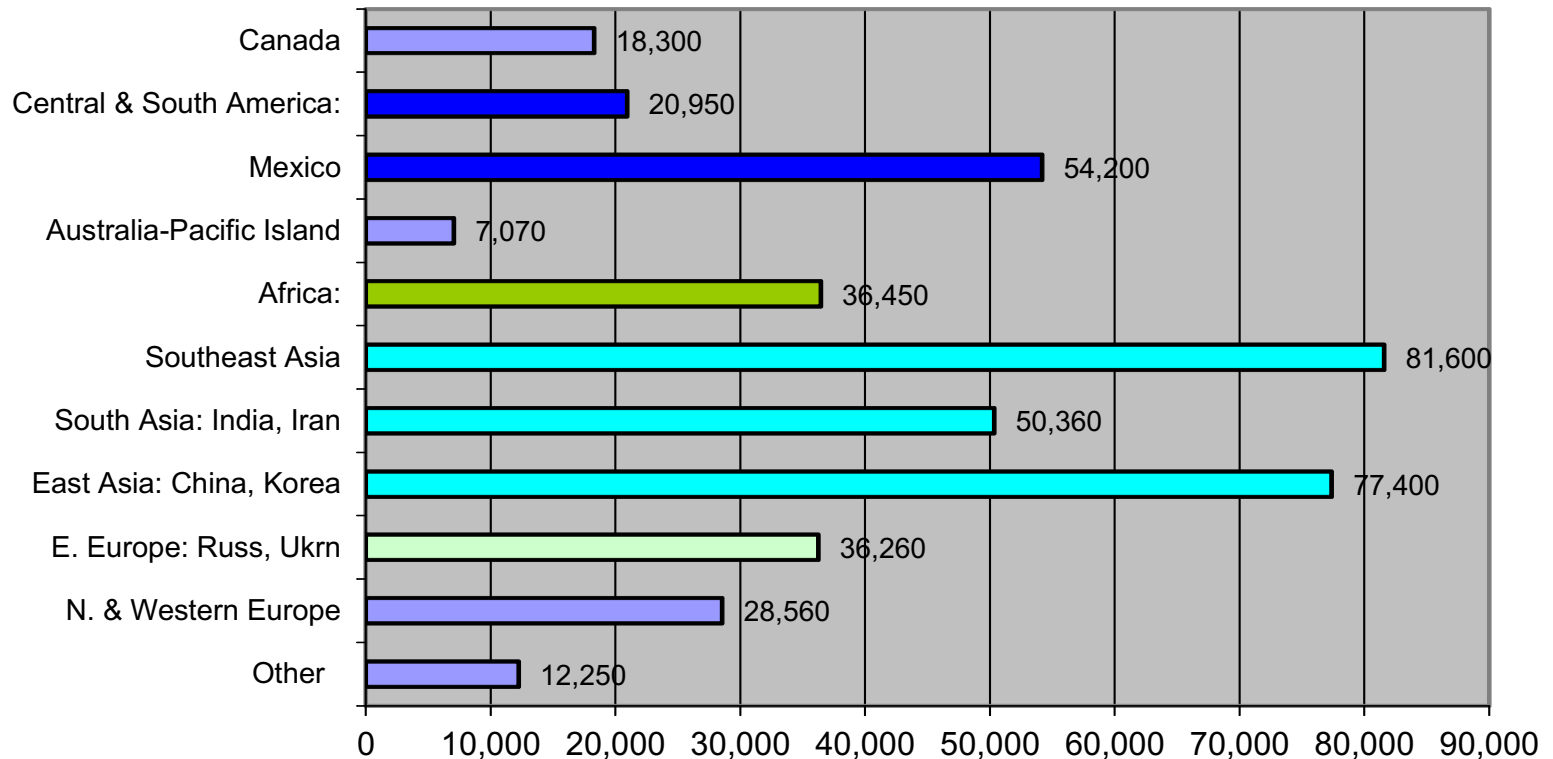
	1990	2000	2011
Native-born	1,366,700	1,468,700	1,544,500
<b>Foreign-born</b>	<b>140,600</b>	<b>268,300</b>	<b>395,100</b>
Total pop.	1,507,300	1,737,000	1,939,600

**Immigrants Dominate Population Growth**



# Immigrants arrive from all over the world

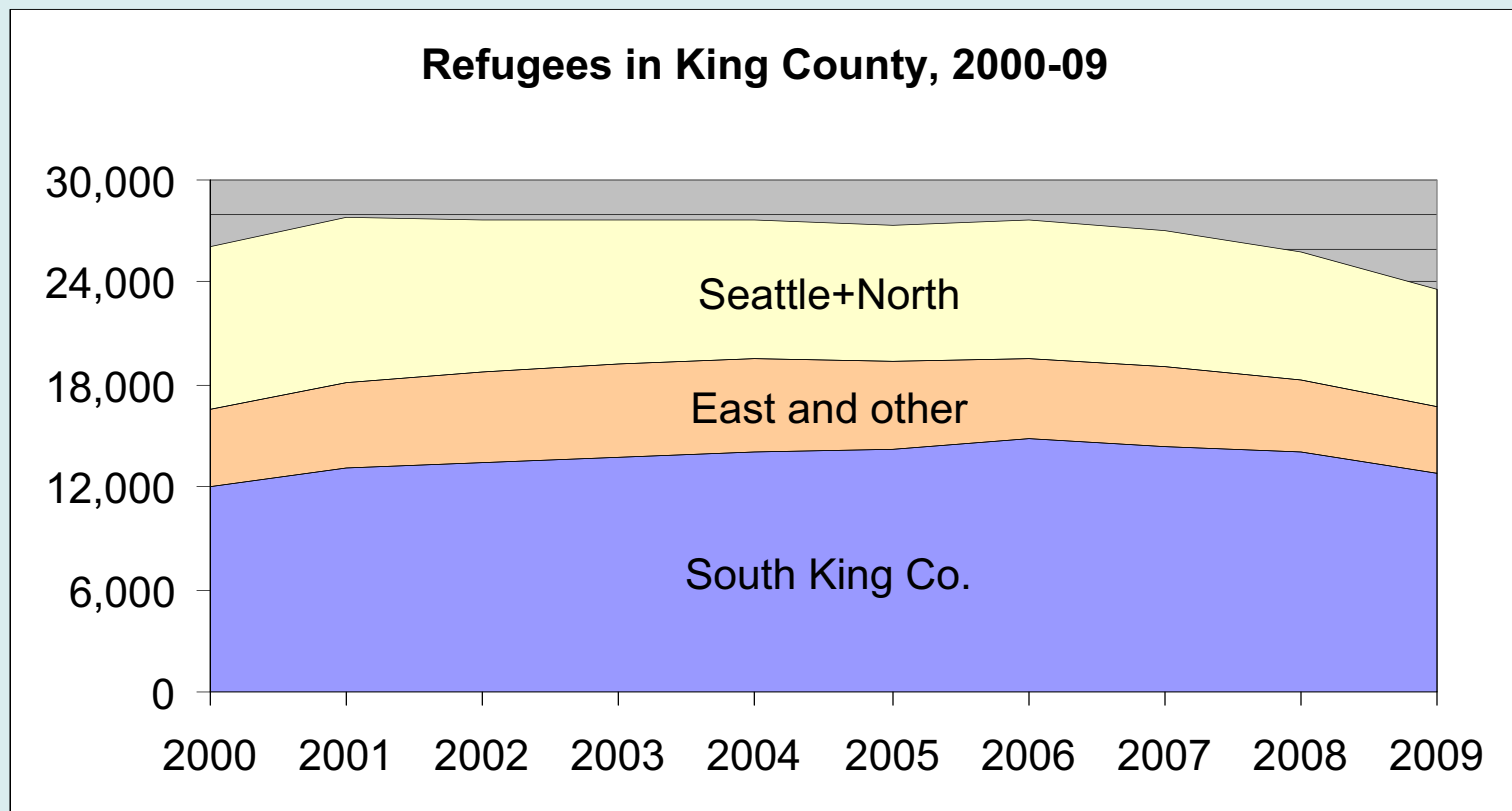
**Origin of Foreign-born Population, 2013**



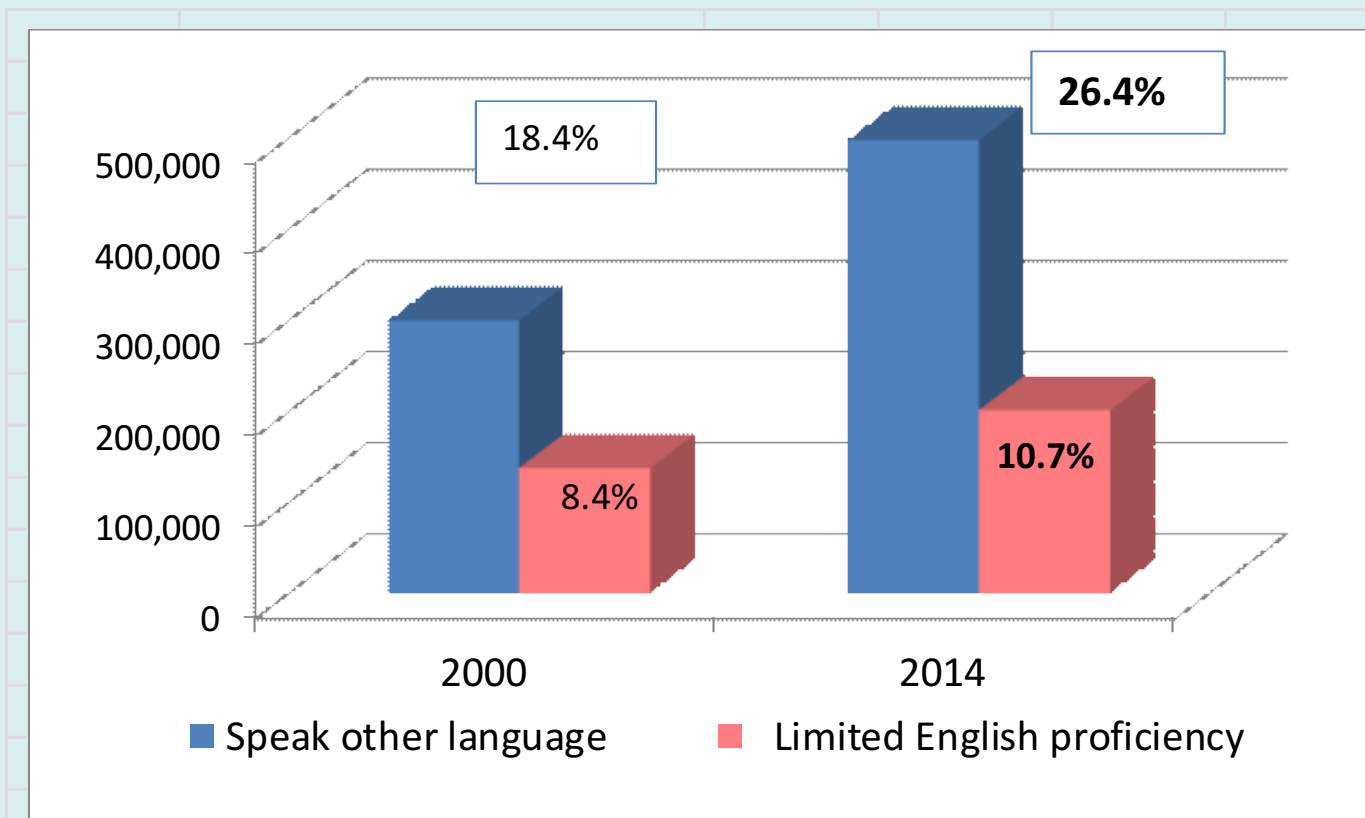


# Refugee population in King County

Numbers steady until recently  
South King has majority



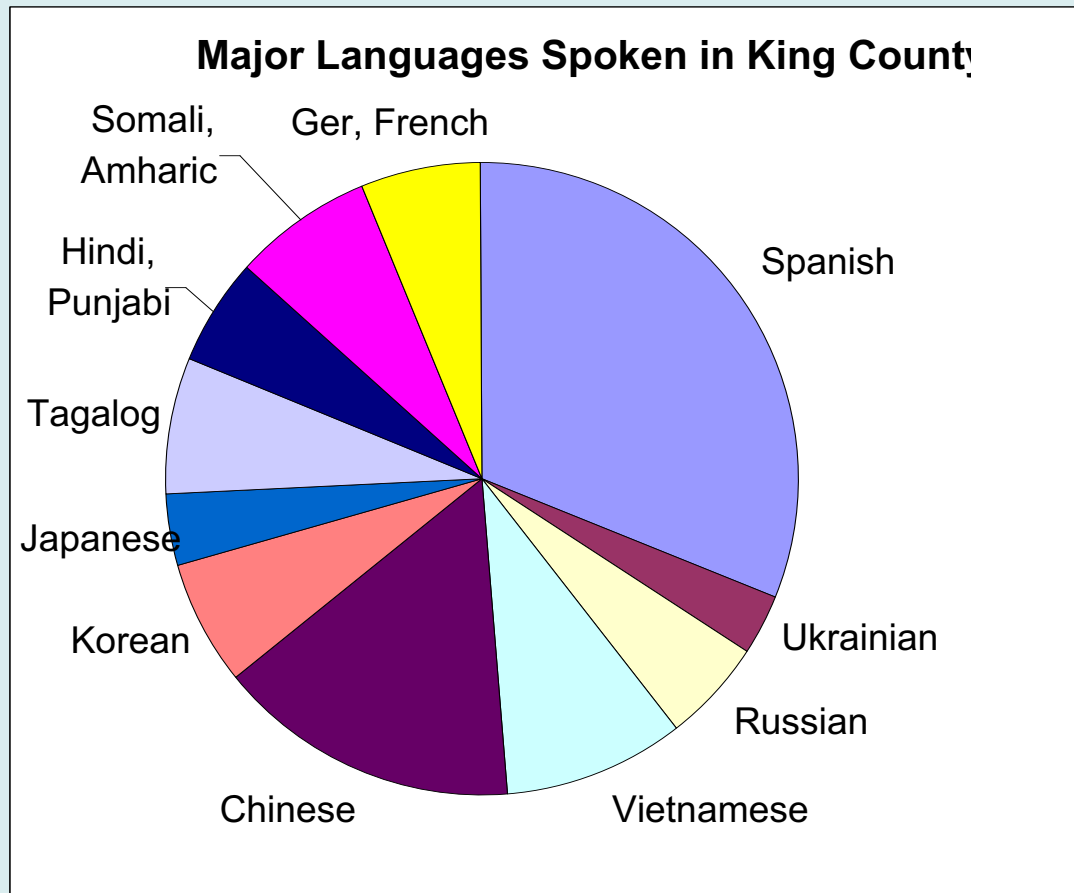
# Increasing numbers speak other languages



**King County Languages Other Than English**

	2000	2014
Speak other language	299,600	497,700
Limited English proficiency	137,700	201,500

# King County residents speak 170+ different languages




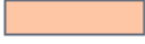



Spanish	102,000
Chinese	51,000
Vietnamese	30,200
Somali, Amhar	23,400
Tagalog	22,900
Korean	21,100
Ger, French	20,400
Hindi, Punjabi	18,400
Russian	17,700
Japanese	11,300
Ukrainian	10,000
Other	73,500
	401,900

# Percent Speak Language Other Than English at Home by Census Tract, with Cities, King County, Washington, 5-year Average 2006-2010

## Legend

-  King County border
-  Cities
-  Water

## Percent Population Ages 5+

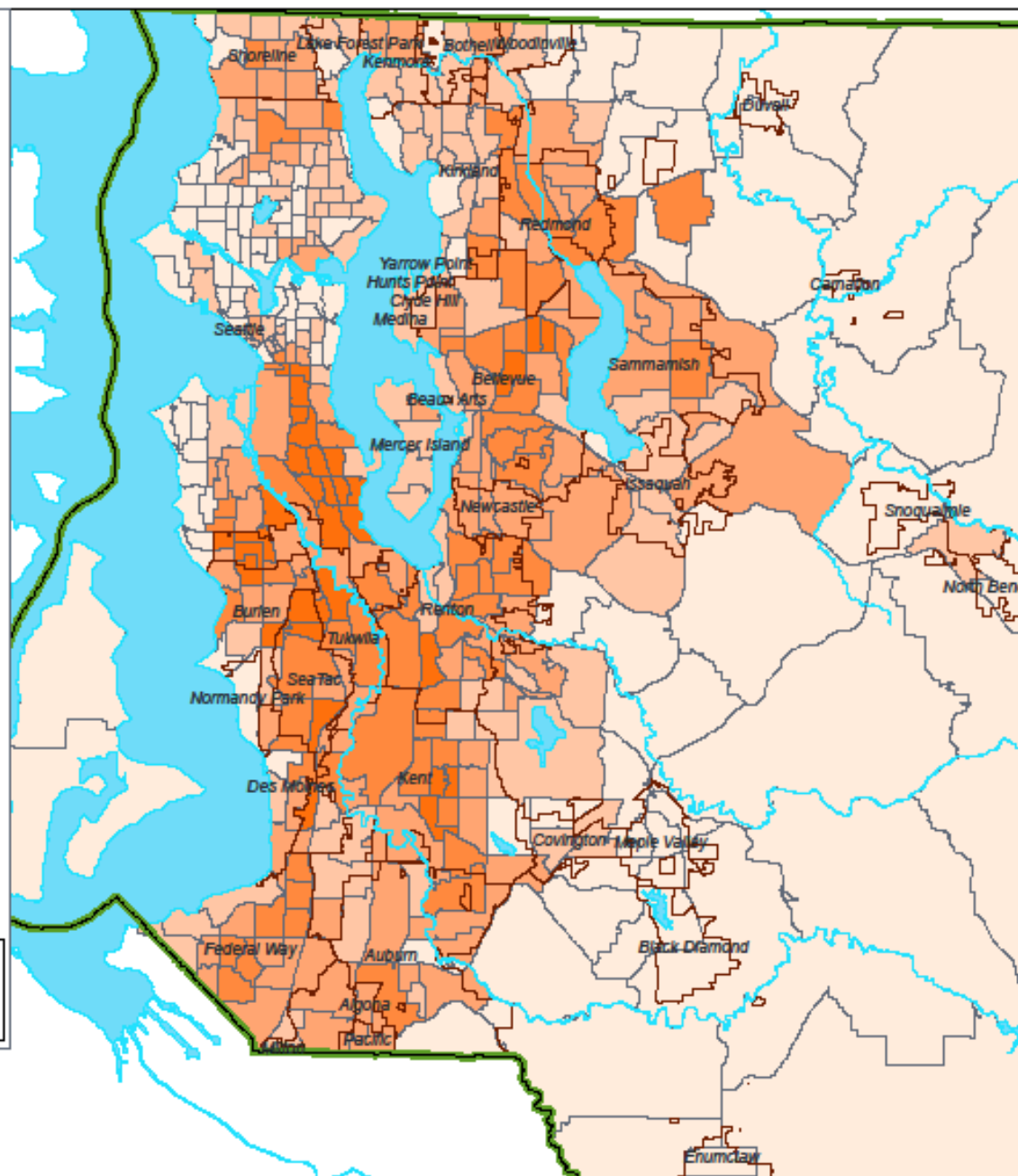
-  0% - 13.6%
-  13.7% - 22.8%
-  22.9% - 32.5%
-  32.6% - 45.8%
-  45.9% - 70%

0 1 2 4 6 8  
Miles

**Public Health**  
Seattle & King County



Data Source: US Census Bureau, 2006-2010 American Community Survey  
Produced by: Public Health - Seattle & King County, Assessment, Policy Development & Evaluation Unit, 6/26/2012

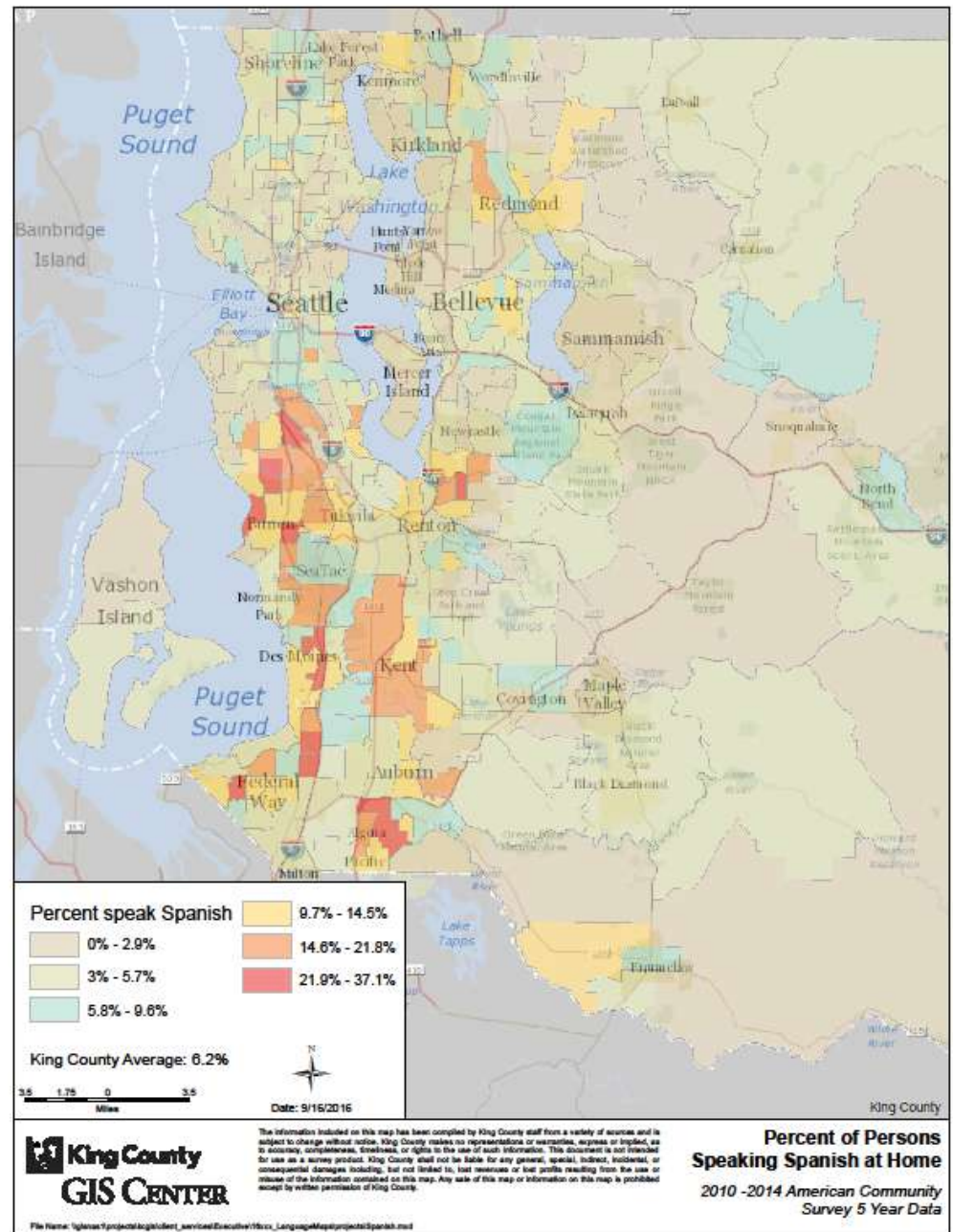


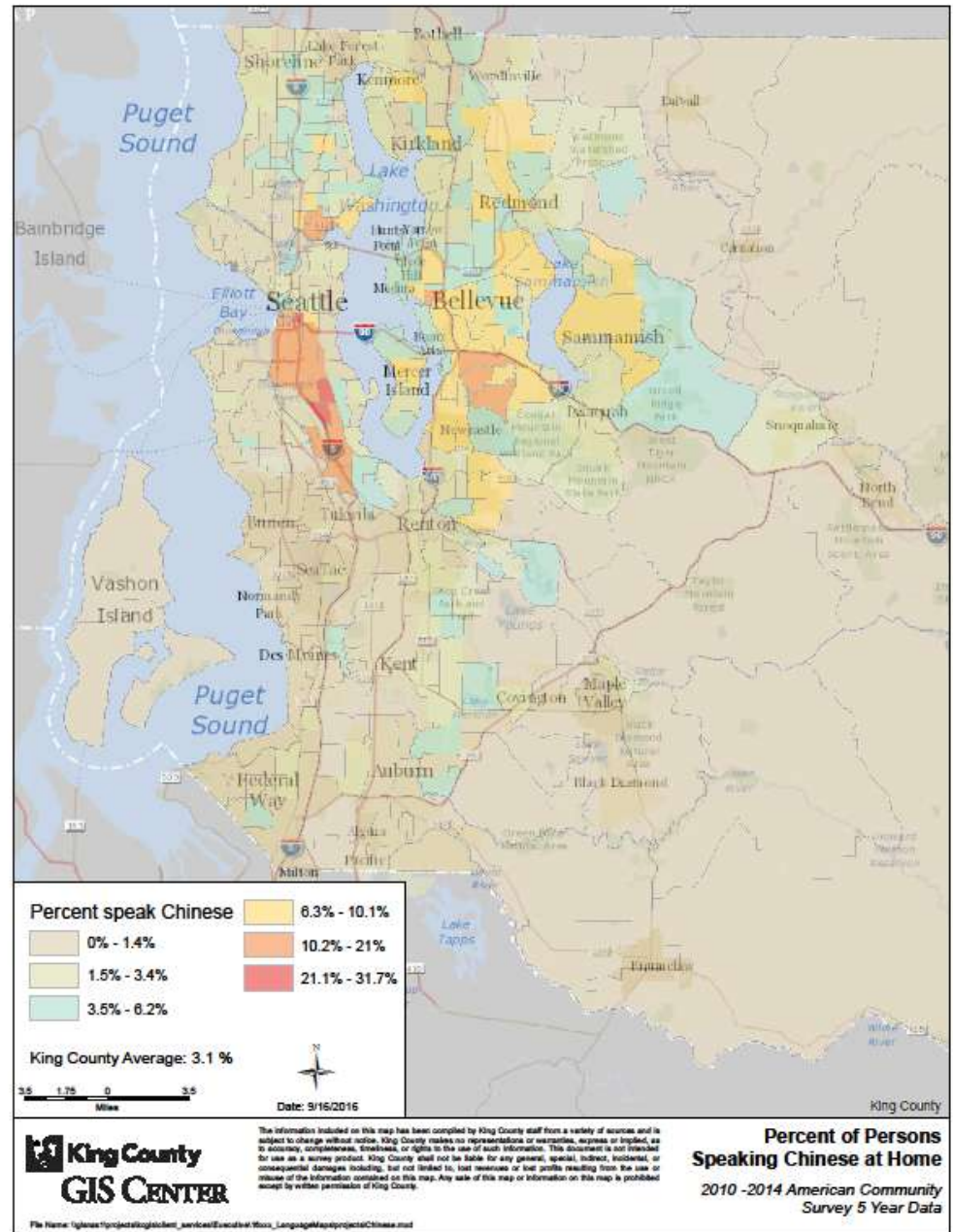


# Spanish speakers in King County by census tract

- Highest category:  
22% - 37%  
speaking Spanish

Spanish speakers are  
widely distributed

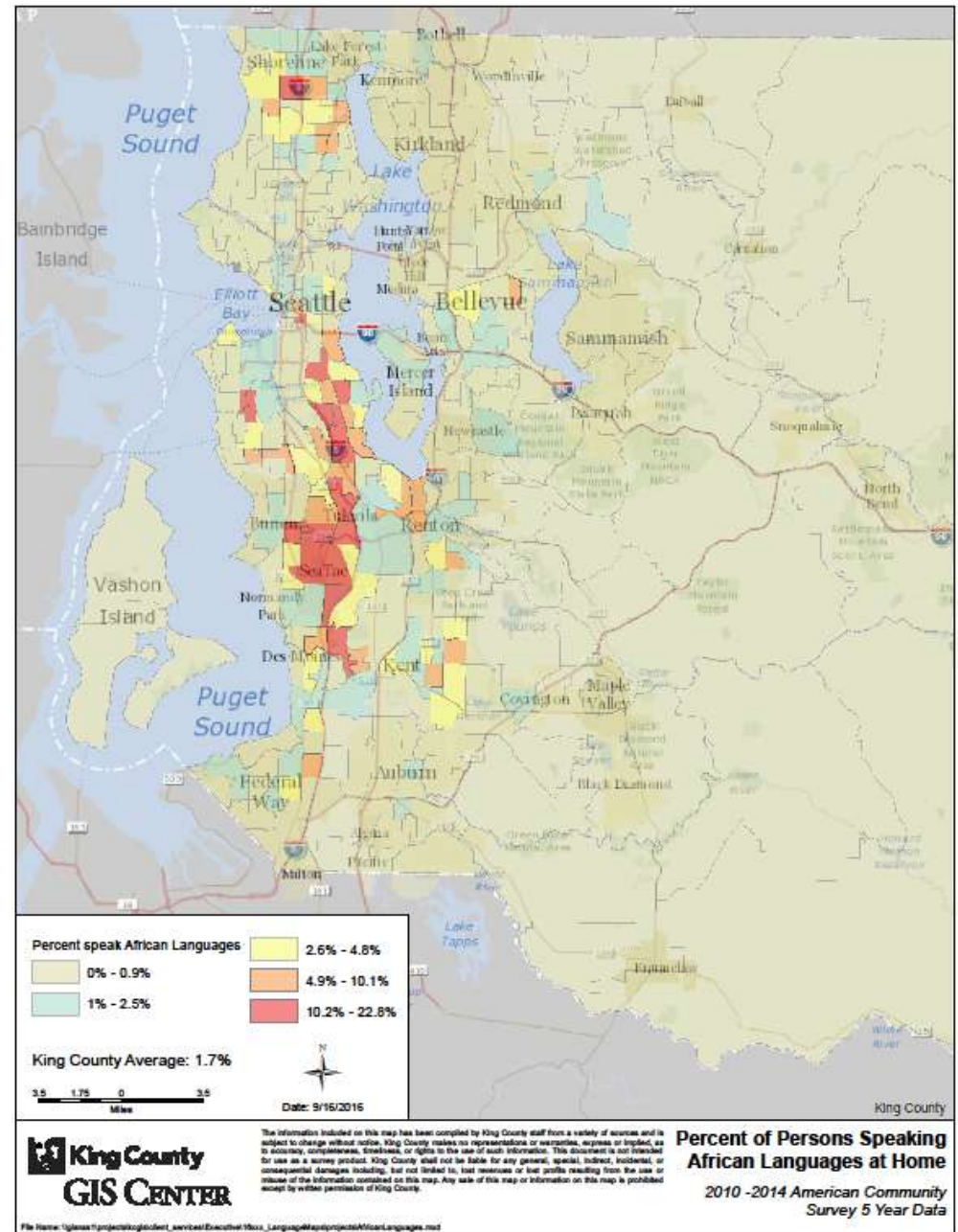




# African languages in King County

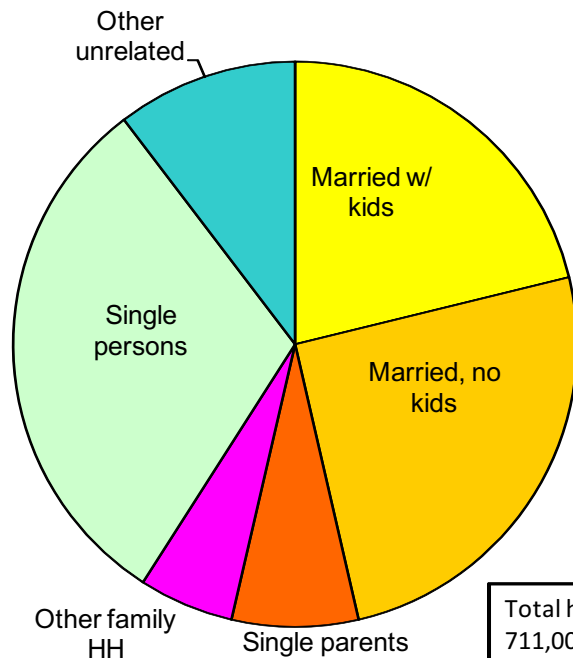
- Highest category:  
10% - 23%  
speaking languages  
including Amharic,  
Tigrinya, Somali.

Clustered in Seattle  
and SW King County



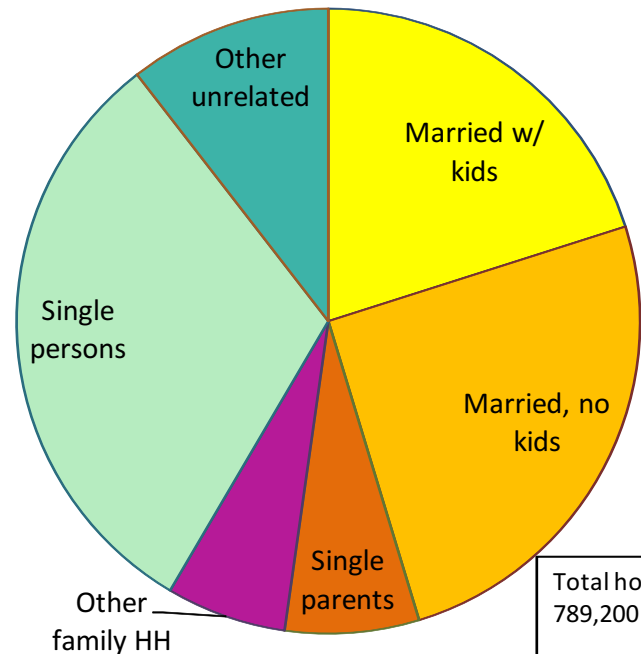
# Household types have changed little since 2000 - single persons remain the largest category

**King County Household Types, 2000**



Total households:  
711,000

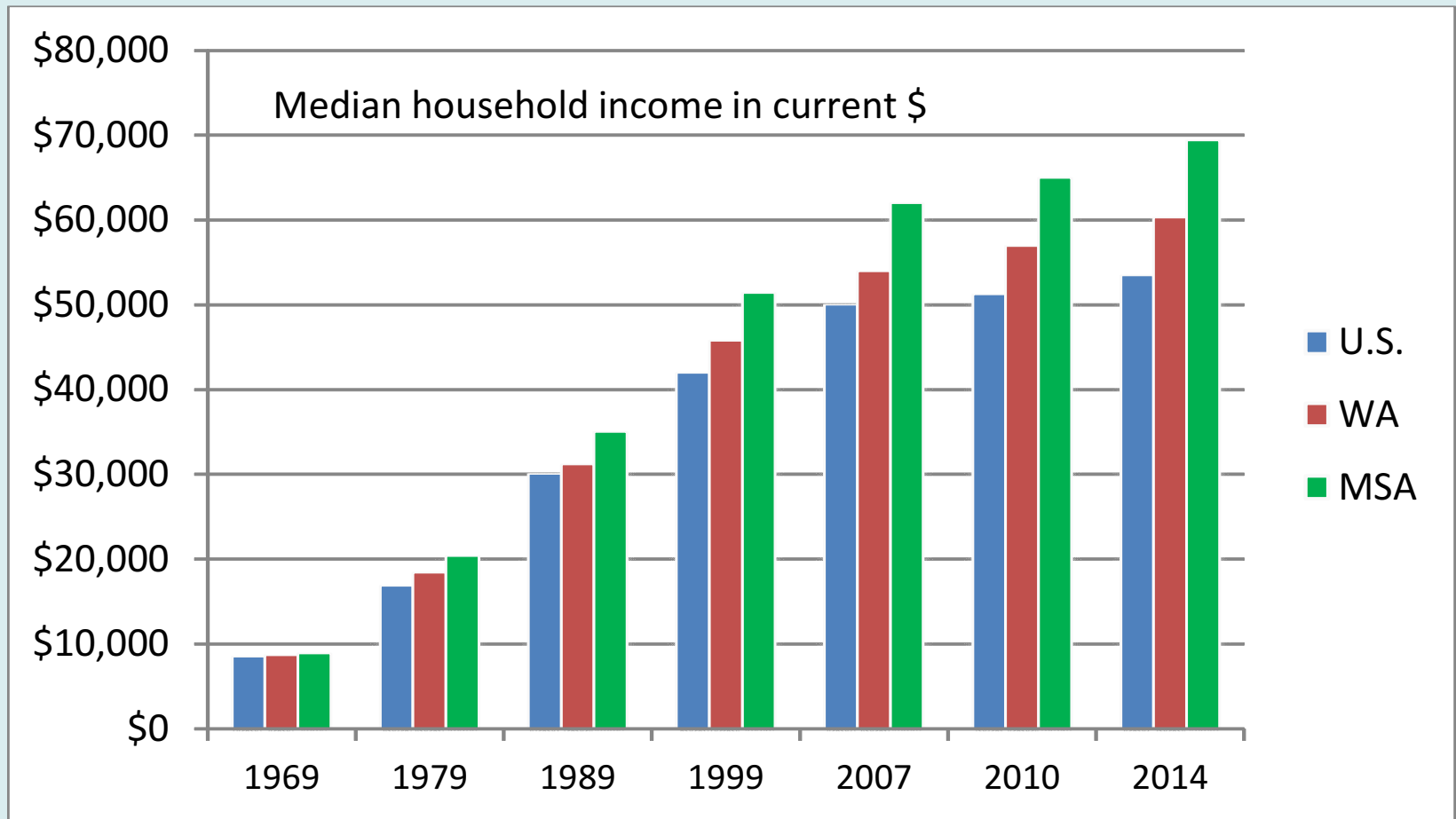
**King County Household Types, 2010**



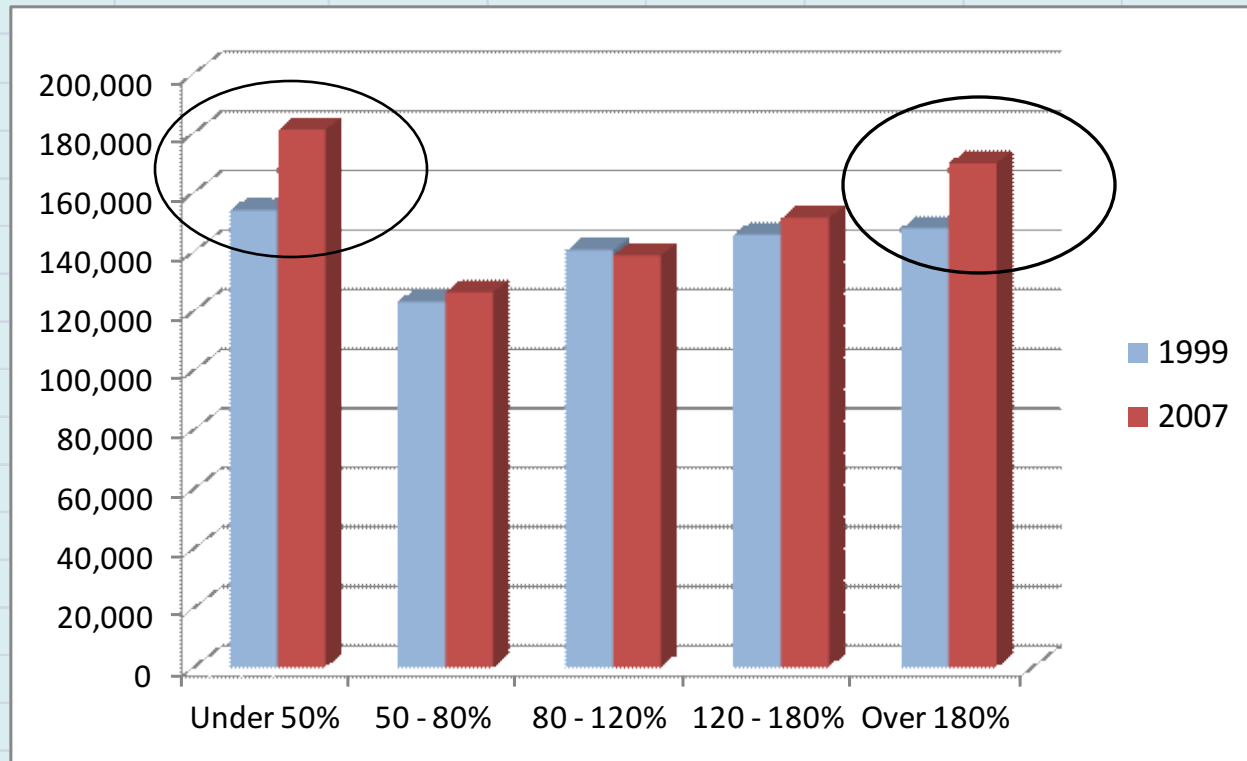
Total households:  
789,200



# Trend of median household income, U.S., WA and Puget Sound

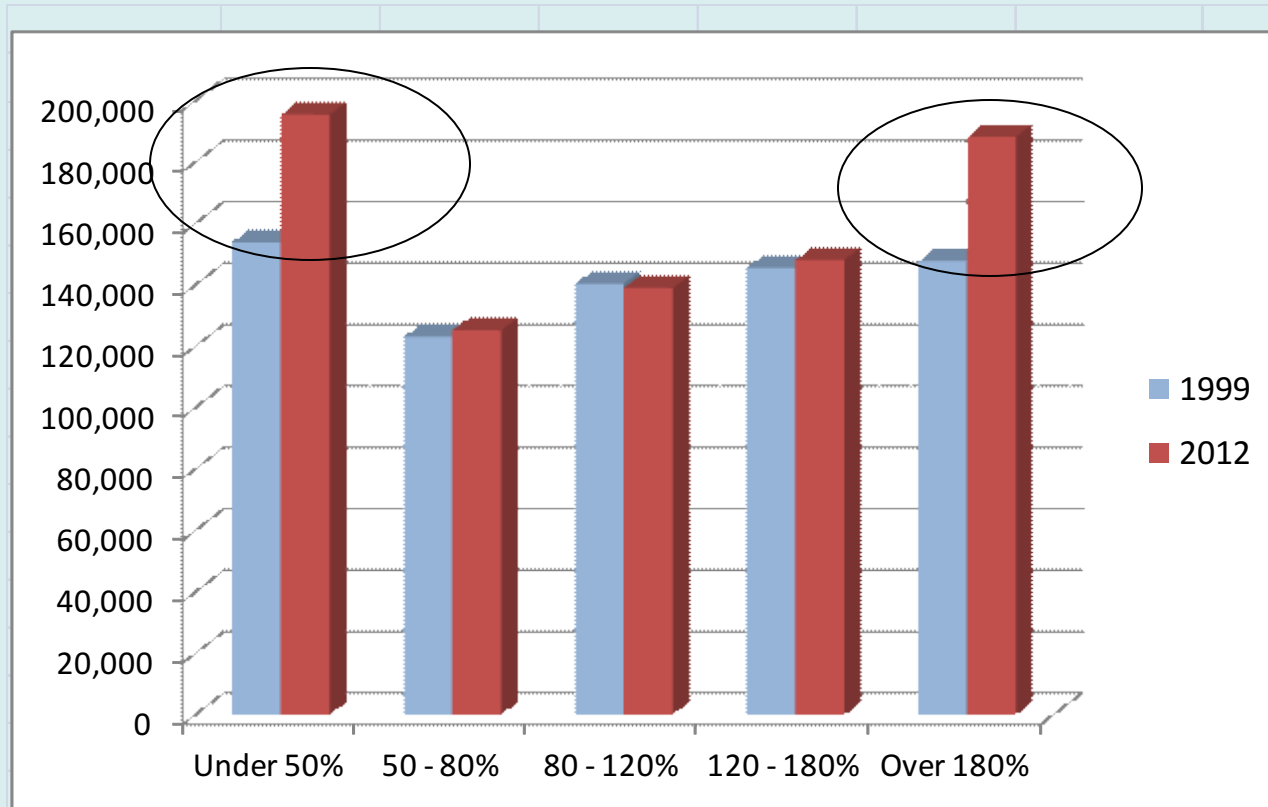


# Income distribution: where's the middle class?



	1999	2007	Households in 5 Income Categories		
Under 50%	154,000	181,100			
50 - 80%	123,200	126,400			
80 - 120%	140,500	138,800			
120 - 180%	145,700	151,400			
Over 180%	147,900	169,800			
Total H'holds	711,300	767,500			
			Median household income:		
			1999, ('99\$)	'99, ('07\$)	2007, ('07\$)
			\$53,200	\$66,300	\$67,250

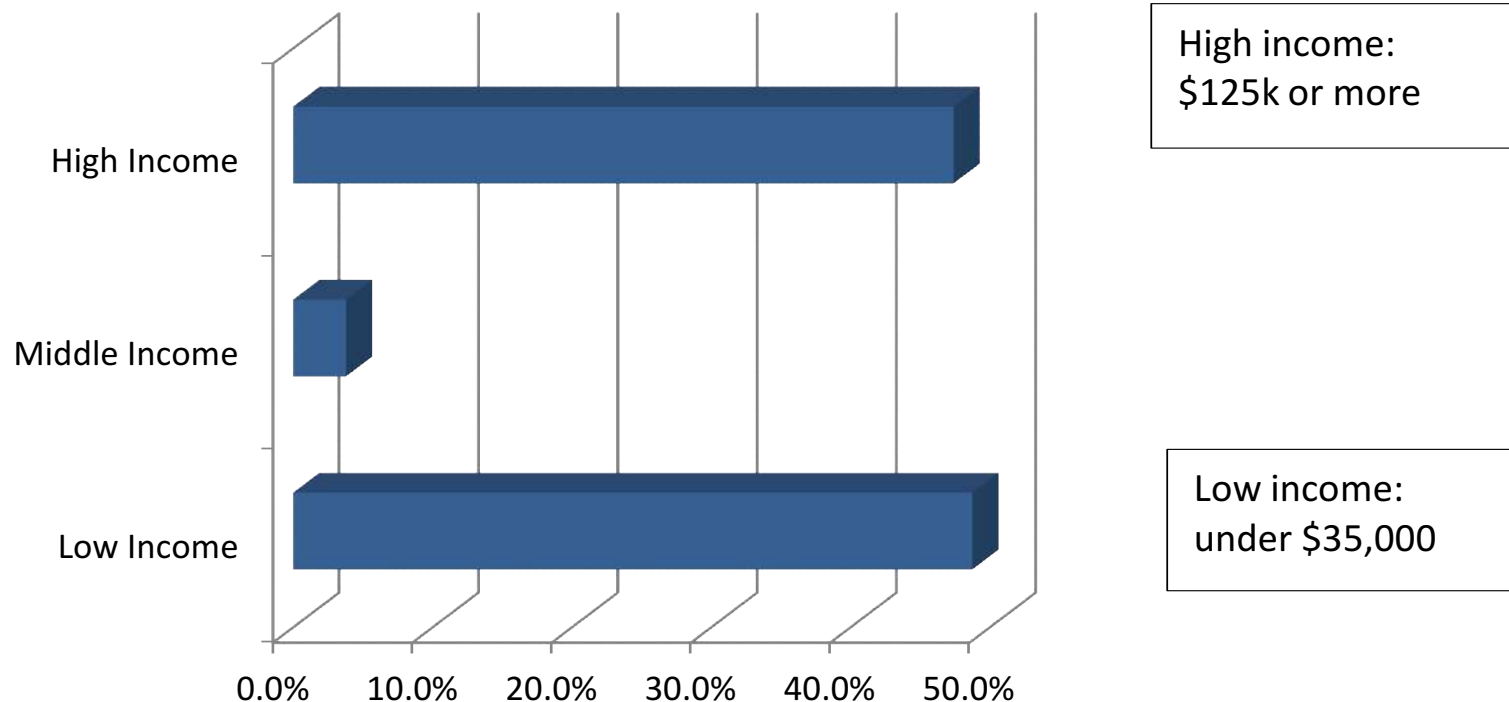
# Updated Income Distribution: where's the middle class now?



	1999	2012	Households in 5 Income Categories		
Under 50%	154,000	195,600			
50 - 80%	123,200	125,300			
80 - 120%	140,500	139,100			
120 - 180%	145,700	148,250	Median household income:		
Over 180%	147,900	188,350	1999, ('99\$)	'99, ('07\$)	2010-12, ('12\$)
Total H'holds	711,300	796,600	\$53,200	\$66,300	<b>\$69,346</b>

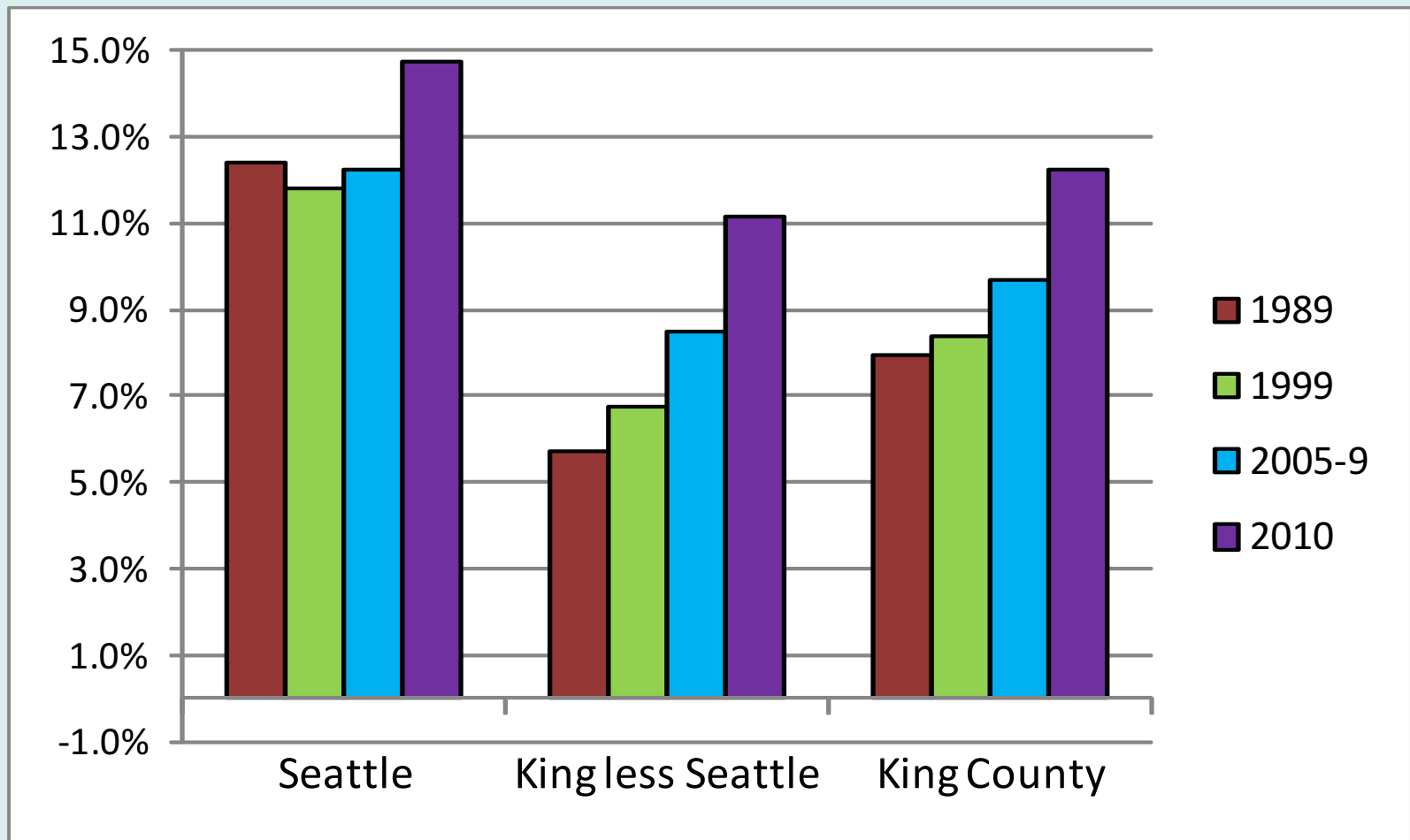
# Increasing Income Inequality – a more accurate portrayal

**Net Change in Number of Households by Income, 1999 - 2012**

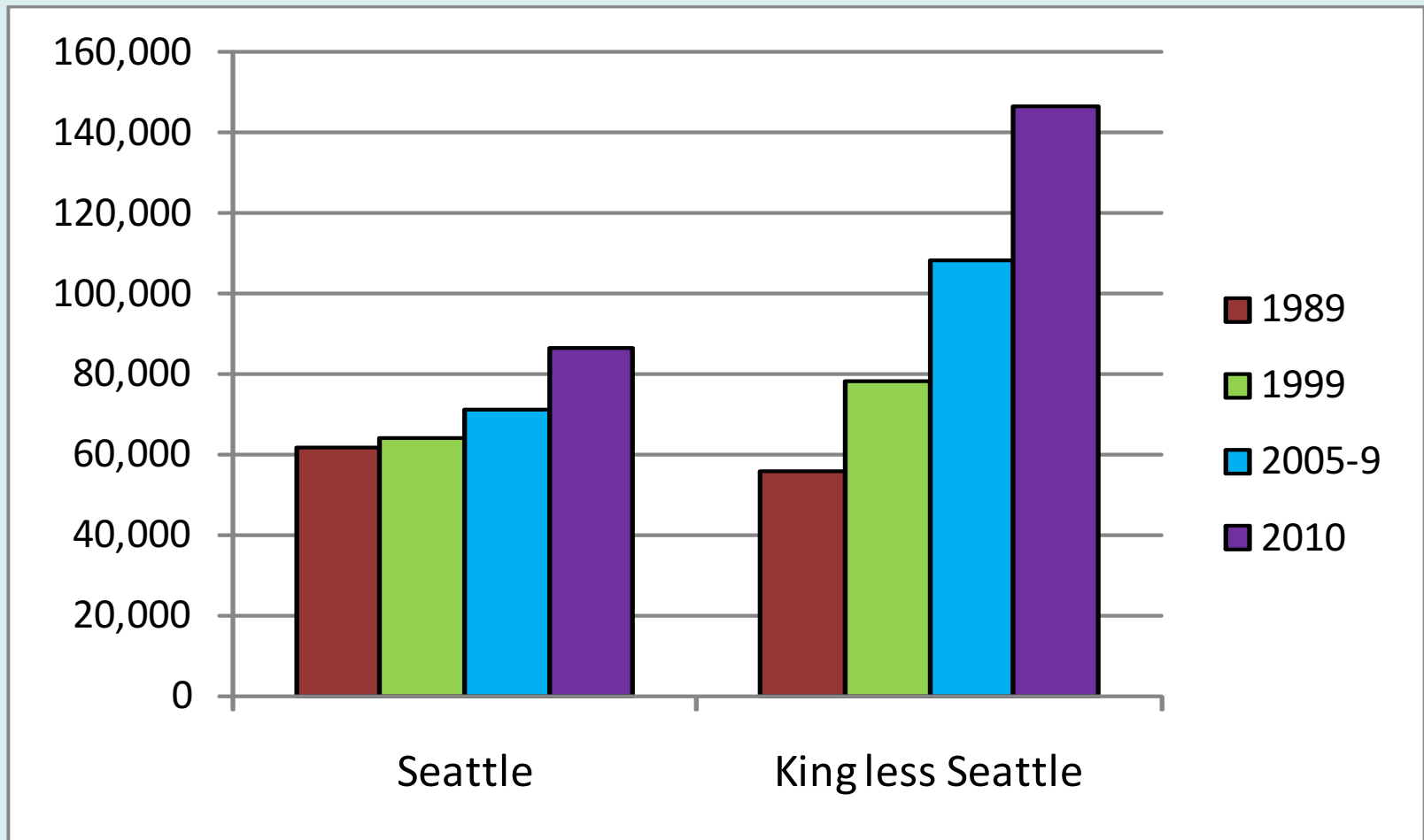


**Since 1999, more than 95% of the net change in King County households has occurred in the Low and High income brackets; less than 5% in the Middle.**

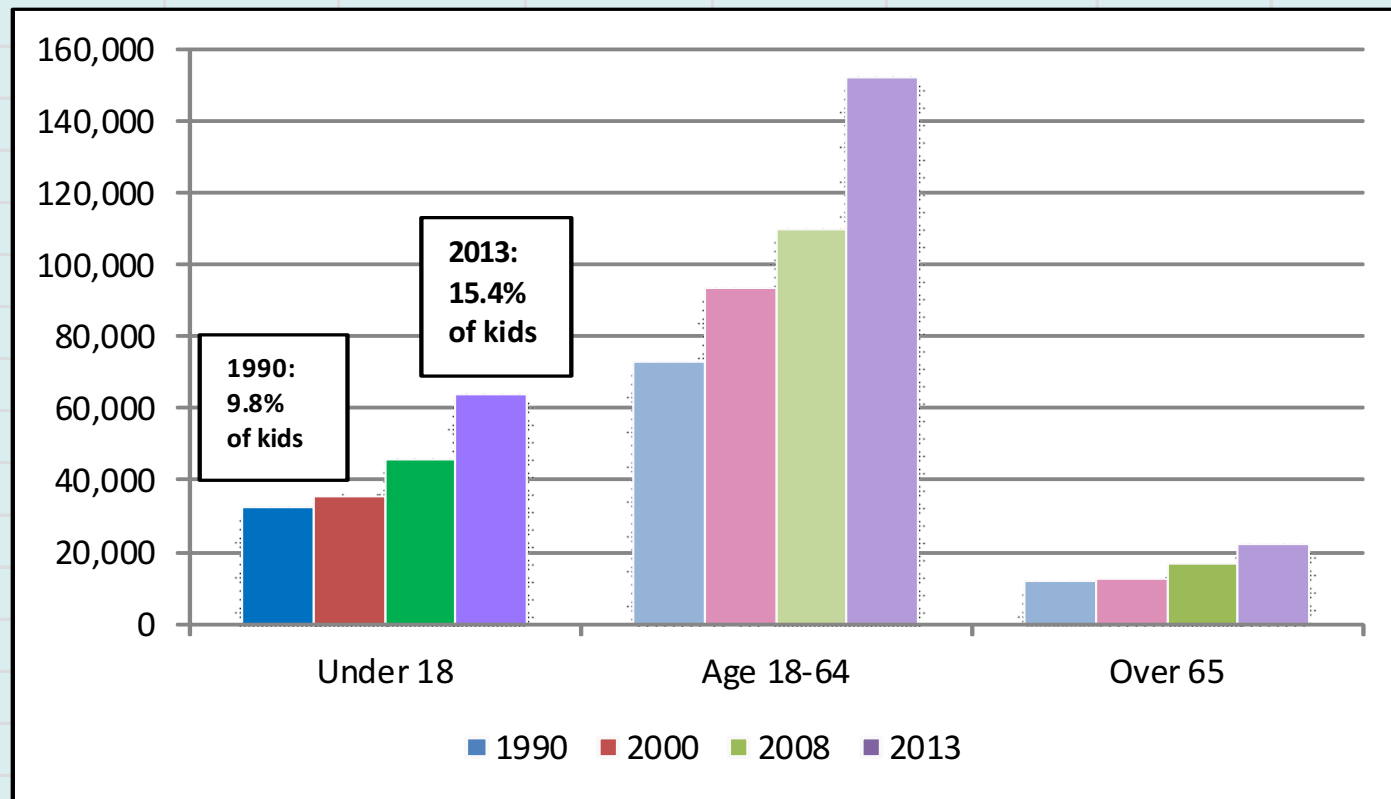
# Poverty rates increased, especially in the suburbs



# Numbers of persons below poverty: now primarily in the suburbs



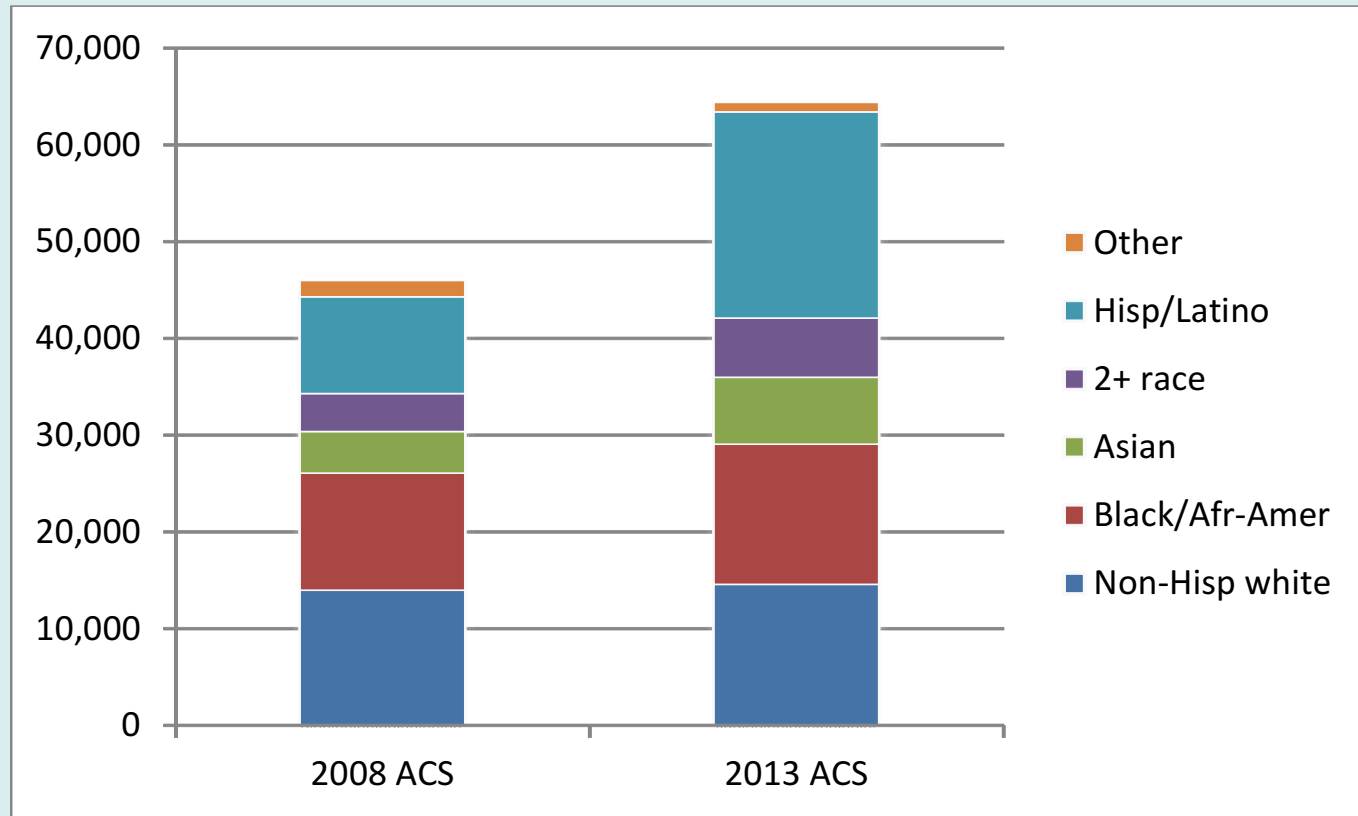
# Children below poverty, countywide: number has doubled since 1990



	Under 18	Age 18-64	Over 65	Total < Pov.	Pct < Pov.
1990	32,600	73,000	12,000	117,600	7.9%
2000	36,000	94,000	13,000	143,000	8.4%
2008	46,000	110,000	17,000	173,000	9.5%
2013	64,400	152,600	22,400	239,400	12.1%



# King County Kids Below Poverty by Race: 2008 and 2013




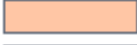



Before and “after” the Great Recession. Note largest increases were among Latino and multi-race children.

# Percent Below 200% Poverty by Census Tract, with Cities, King County, Washington, 5-year Average 2006-2010

## Legend

-  King County border
-  Cities
-  Water

## Percent below 200% Poverty

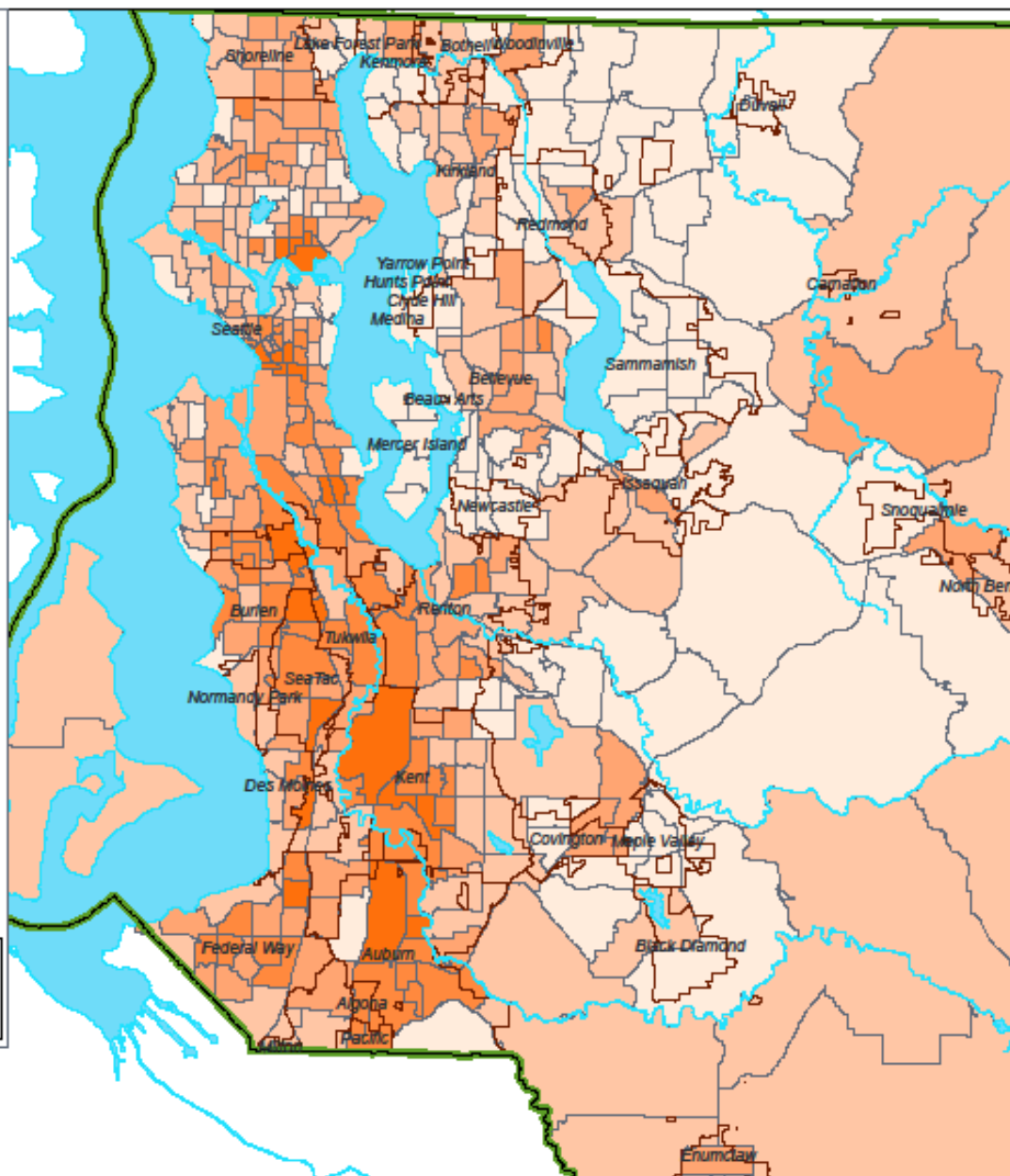
-  0% - 11.9%
-  12% - 21.5%
-  21.6% - 33.8%
-  33.9% - 50%
-  50.1% - 84.5%

0 1 2 4 6 8  
Miles

**Public Health**  
Seattle & King County

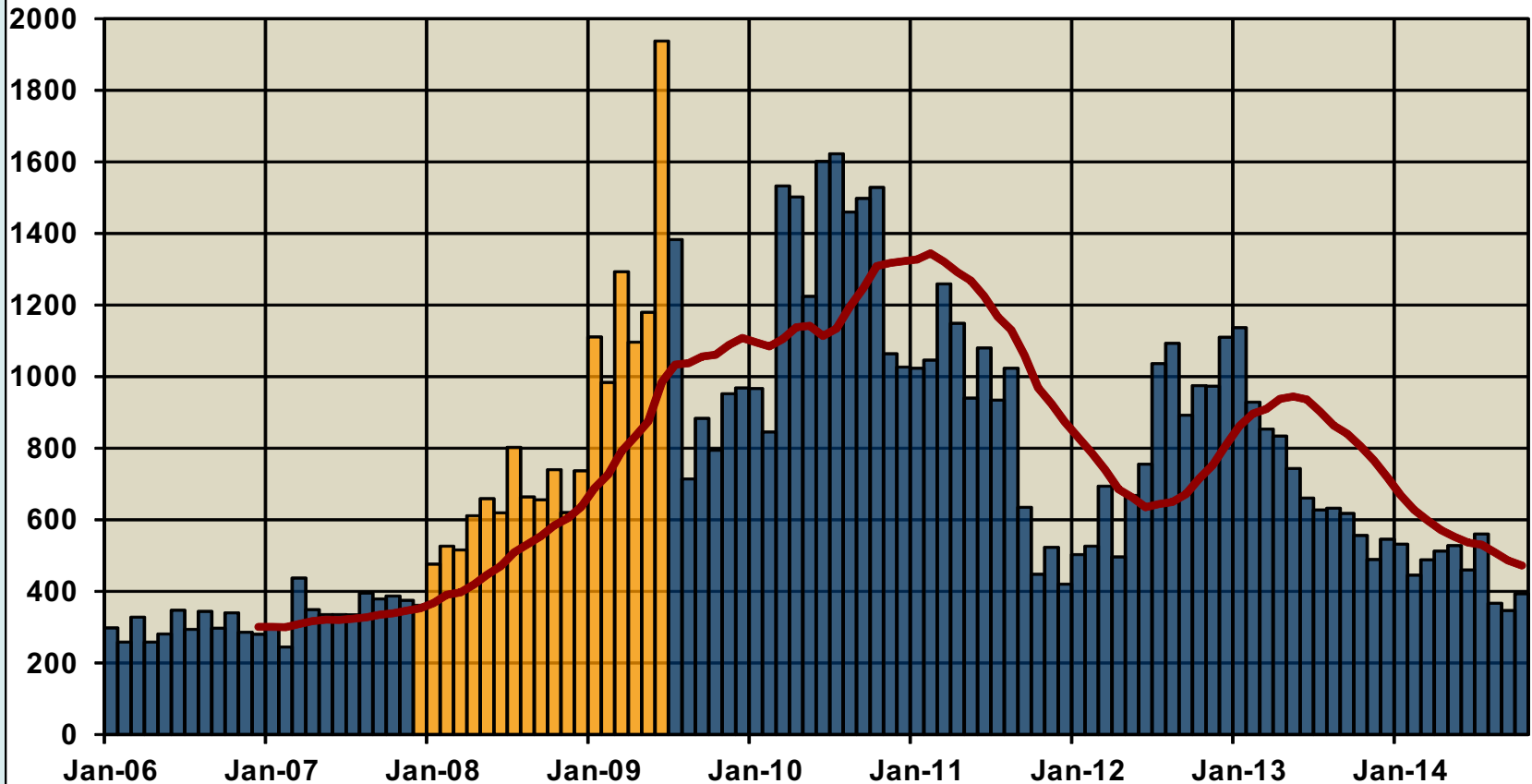


Data Source: US Census Bureau, 2006-2010 American  
Community Survey  
Produced by: Public Health - Seattle & King County; Assessment,  
Policy Development & Evaluation Unit, 6/26/2012



# Number of Foreclosures Grew Dramatically During and After the Recession

**King County Monthly NTS Count**  
Not adjusted for duplication, January 2006-October 2014  
Source: KC Recorder's Office



# What future trends can we expect?

- Continuing population growth in King County.
- Continuing increase in diversity of cultures.
- Perhaps increasing disparity between communities.
- Growth in Seattle and the suburban cities - with the greatest changes in the suburbs.
- Continuing shift from unincorporated into cities.

# Thank you !

- Questions...?
  - Chandler Felt, Demographer
  - King County Office of Performance, Strategy and Budget
  - Seattle, WA 98104
  - (206) 263 – 9693
  - [Chandler.felt@kingcounty.gov](mailto:Chandler.felt@kingcounty.gov)