

Name: _____

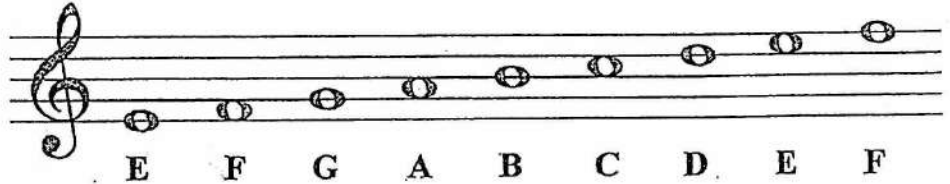
Date _____

The Staff - Treble Clef

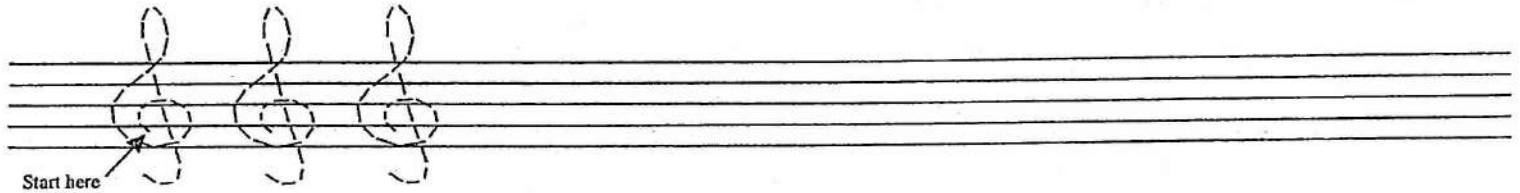
A **clef** appears at the beginning of each staff. The clef shown here is a **treble clef**.



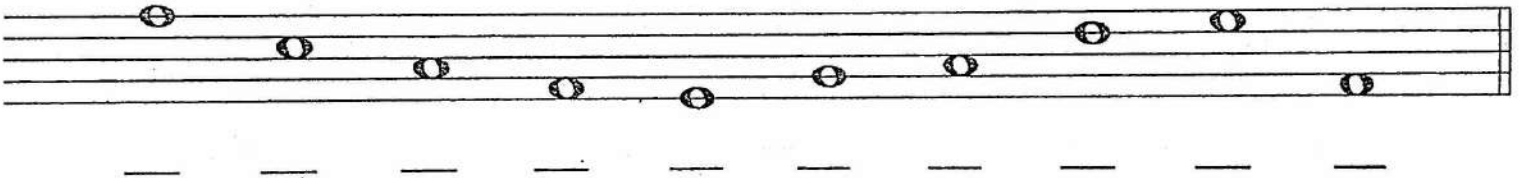
Each note on the treble clef staff has a letter name.



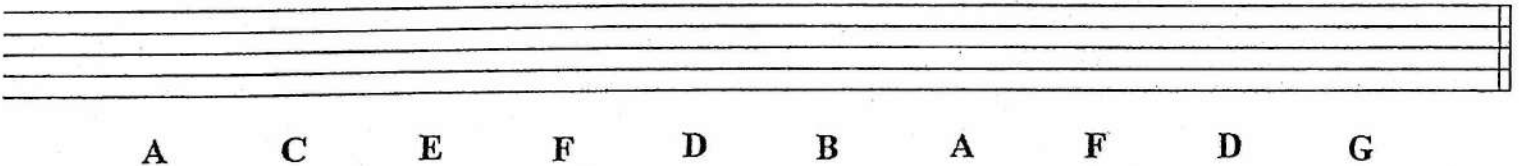
1. Practice drawing the treble clef sign by tracing over the guidelines. Draw five more in the remaining space.



2. Draw a treble clef at the beginning of the staff and write the letter name of each note.



3. Draw the treble clef at the beginning of the staff and then draw the notes indicated.
If a note can be drawn in more than one place on the staff, choose which one you want to draw.



4. Draw the treble clef at the beginning of the staff.
Write the letter name for each note, then circle the higher note in each pair.

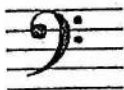


5. Draw the treble clef at the beginning of the staff.
Write the letter name for each note, then circle the lower note in each pair.

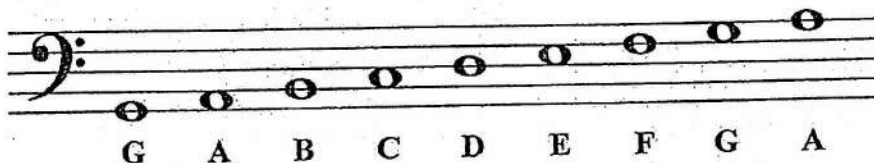


The Staff - Bass Clef

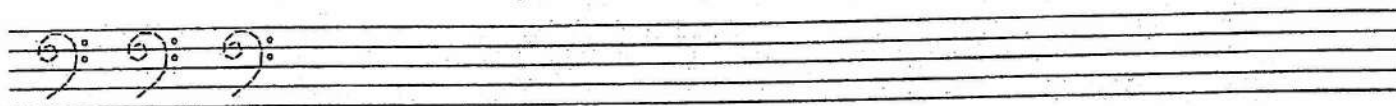
A **clef** appears at the beginning of each staff. The clef shown here is a **bass clef**.



Each note on the bass clef staff has a letter name.



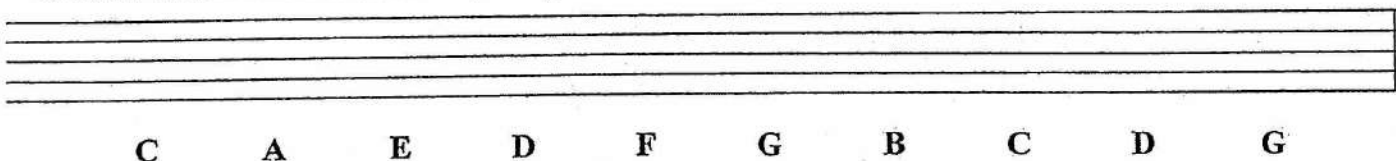
1. Practice drawing the bass clef sign by tracing over the guidelines. Draw five more in the remaining space.



2. Draw a bass clef at the beginning of the staff and write the letter name of each note.



3. Draw the bass clef at the beginning of the staff and then draw the notes indicated.
If a note can be drawn in more than one place on the staff, choose which one you want to draw.



4. Draw the bass clef at the beginning of the staff.
Write the letter name for each note, then circle the higher note in each pair.



5. Draw the bass clef at the beginning of the staff.
Write the letter name for each note, then circle the lower note in each pair.



Elementary Band Bb Scale Patterns

Concert Bb Major

The image shows six staves of music, each representing a different instrument. The key signature is one flat (Bb Major) and the time signature is 4/4. The scale pattern is: C4 (quarter), D4 (quarter), Eb4 (quarter), F4 (quarter), G4 (quarter), A4 (quarter), Bb4 (quarter), C5 (quarter). The instruments and their parts are: Flute (treble clef), Clarinet (treble clef), Alto Saxophone (treble clef), Trumpet (treble clef), Trombone (bass clef), and Bells (treble clef). Each staff begins with a key signature of one flat and a 4/4 time signature.

Flute

Clarinet

Alto Saxophone

Trumpet

Trombone

Bells

7 Titi Titi Ta Ta

Fl.

Musical staff for Flute (Fl.) in G major, 4/4 time. The staff contains a melodic line starting on G4, moving up to A4, B4, and C5, then descending through B4, A4, G4, F4, E4, D4, C4, and B3. The melody is primarily eighth and quarter notes, with some beamed sixteenth notes. A dynamic marking of *p* is present at the end of the staff.

Cl.

Musical staff for Clarinet (Cl.) in G major, 4/4 time. The staff contains a melodic line starting on G4, moving up to A4, B4, and C5, then descending through B4, A4, G4, F4, E4, D4, C4, and B3. The melody is primarily eighth and quarter notes, with some beamed sixteenth notes. A dynamic marking of *p* is present at the end of the staff.

A. Sax.

Musical staff for Alto Saxophone (A. Sax.) in G major, 4/4 time. The staff contains a melodic line starting on G4, moving up to A4, B4, and C5, then descending through B4, A4, G4, F4, E4, D4, C4, and B3. The melody is primarily eighth and quarter notes, with some beamed sixteenth notes. A dynamic marking of *p* is present at the end of the staff.

Tpt.

Musical staff for Trumpet (Tpt.) in G major, 4/4 time. The staff contains a melodic line starting on G4, moving up to A4, B4, and C5, then descending through B4, A4, G4, F4, E4, D4, C4, and B3. The melody is primarily eighth and quarter notes, with some beamed sixteenth notes. A dynamic marking of *p* is present at the end of the staff.

Tbn.

Musical staff for Trombone (Tbn.) in G major, 4/4 time. The staff contains a melodic line starting on G4, moving up to A4, B4, and C5, then descending through B4, A4, G4, F4, E4, D4, C4, and B3. The melody is primarily eighth and quarter notes, with some beamed sixteenth notes. A dynamic marking of *p* is present at the end of the staff.

Bls.

Musical staff for Baritone (Bls.) in G major, 4/4 time. The staff contains a melodic line starting on G4, moving up to A4, B4, and C5, then descending through B4, A4, G4, F4, E4, D4, C4, and B3. The melody is primarily eighth and quarter notes, with some beamed sixteenth notes. A dynamic marking of *p* is present at the end of the staff.

13 Concert Bb in 3rds

Fl.

The Flute staff contains a melodic line starting with a quarter note G4, followed by eighth notes A4, Bb4, and C5. This is followed by a trill-like figure on G4 (quarter note G4, eighth notes A4, Bb4, A4, G4), then a quarter note F4, and a final quarter note E4.

Cl.

The Clarinet staff contains a melodic line starting with a quarter note G4, followed by eighth notes A4, Bb4, and C5. This is followed by a quarter note F4, and a final quarter note E4.

A. Sax.

The Alto Saxophone staff contains a melodic line starting with a quarter note G4, followed by eighth notes A4, Bb4, and C5. This is followed by a quarter note F4, and a final quarter note E4.

Tpt.

The Trumpet staff contains a melodic line starting with a quarter note G4, followed by eighth notes A4, Bb4, and C5. This is followed by a quarter note F4, and a final quarter note E4.

Tbn.

The Trombone staff contains a melodic line starting with a quarter note G4, followed by eighth notes A4, Bb4, and C5. This is followed by a quarter note F4, and a final quarter note E4.

Bls.

The Baritone staff contains a melodic line starting with a quarter note G4, followed by eighth notes A4, Bb4, and C5. This is followed by a quarter note F4, and a final quarter note E4.

Starlight Rhythms

$\text{♩} = 120$

Rhythm $\frac{4}{4}$

Rhythm $\frac{4}{4}$

Rhythm $\frac{4}{4}$

Rhythm $\frac{4}{4}$

Rhythm $\frac{4}{4}$

Power Rock Rhythms

$\text{♩} = 120$

Rhythm $\frac{4}{4}$

Rhythm $\frac{4}{4}$

Rhythm $\frac{4}{4}$

Rhythm $\frac{4}{4}$

American Fantasy Rhythms

$\text{♩} = 120$

Rhythm $\frac{4}{4}$

Rhythm $\frac{4}{4}$

Rhythm $\frac{4}{4}$

My name is _____

Class _____

Label it!

Directions:

Write out the labels below. Put them onto the correct place.

A musical staff in treble clef with a 2/4 time signature. The staff contains the following notes and symbols from left to right: a treble clef, a 2/4 time signature, a quarter note on G4, a half note on A4, a quarter note on B4, a quarter note on C5, a quarter note on B4, a quarter note on A4, a quarter note on G4, a sharp sign on the F line, a quarter note on G4, and a double bar line. Above the staff, four dashed boxes are positioned over the first, second, third, and fourth measures. Below the staff, four dashed boxes are positioned over the first, second, third, and fourth measures. Arrows point from the boxes to the corresponding elements on the staff: the top-left box points to the treble clef, the top-middle box points to the first quarter note, the top-right box points to the second half note, the bottom-left box points to the first quarter note, the bottom-middle box points to the second half note, the bottom-right box points to the sharp sign, and the far-right box points to the double bar line.

EIGHTH NOTE	HALF NOTE	SHARP	QUARTER NOTE
TREBLE CLEF	BAR LINE	TIME SIGNATURE	DOUBLE BAR LINE



EIGHTH NOTE - LIGHT BLUE	EIGHTH REST - WHITE
QUARTER NOTE - DARK GREY	QUARTER REST - YELLOW
HALF NOTE - RED	HALF REST - LIGHT GREY
WHOLE NOTE - GREEN	WHOLE REST - DARK BLUE