

**Sierramont Middle School**  
**Ornamental Fences and Gates Project**

**Bid No. B-01-2020-21**

**October 19, 2020**

**BERRYESSA UNION SCHOOL DISTRICT**  
**SAN JOSE, CALIFORNIA**

This Addendum forms a part of the Contract Documents. Bidders must acknowledge receipt of this Addendum in the space provided on the Bid Form. Failure to do so may subject the Bidder to disqualification.

**DRAWING CLARIFICATIONS:**

**Item 1: Sheet A-1.1**

Added general note 6 to read "Do NOT install concrete mow curb".

**Item 2: Sheet A-1.1**

Added general note 7 to read "All double gates to include center fixed post".

**Item 3: Sheet A-1.1**

Removed "Photo 7 – see next sheet" call out.

**Item 4: Sheet A-1.1**

Added call out to read "7'- 0" +/- opening with two (2) 3'- 6" wide double gates. Include panic hardware and fixed post between gates.  
6' high ornamental fence to terminate at end of building corner."

**Item 5: Sheet A-1.1**

Removed portion of fence so that fence terminates at end of building corner.

**Item 6: Sheet A-1.1**

Revised gate opening and sizes.

**Item 7: Sheet A-1.1**

Revised gate swing to swing towards parking lot (away from building).

**Item 8: Sheet A-1.1**

Added note "Install fence line 6" away from back of sidewalks.

**Item 9: Photo References Sheet (sheet 2 of 3)**

Removed Photo #7 from Photo References sheet 2 of 3.

**Item 10: Photo References Sheet (sheet 2 of 3)**

Revised second Photo #7 reference to Photo #8 to read "Photo 8: Quantity two (2) existing benches to be removed. Remove concrete footings and backfill.

**ADDENDUM 01**  
**BID No. B-01-2020-21**

**SIERRAMONT MIDDLE SCHOOL**  
**ORNAMENTAL FENCES AND GATES PROJECT**

Berryessa Union School District

2 | Page

**Item 11: Details Sheet (sheet 3 of 3)**

Removed "Dac-Detex" from call out on detail 11.

**Item 12: Details Sheet (sheet 3 of 3)**

Added "See General Note #1 on sheet A-1.1 for hardware information" in call out on detail 11.

**Attachments:**

Site Fencing Plans and Details

END OF ADDENDUM 01

This scope is for chain link fencing only - N.I.C. (by others)

Photo 7 - see next sheet

Photo 8 - see next sheet

7'-0" +/- opening with two (2) 3'-6" wide double gates. Include panic hardware and fixed post between gates. 6' high ornamental fence to terminate at end of building corner.

Photo 2 - see next sheet

Photo 6 - see next sheet

Photo 5 - see next sheet

Photo 4 - see next sheet

Photo 3 - see next sheet

Install fence line 6" away from back of sidewalks

Ornamental fencing scope

6. Do NOT install concrete mow curb  
7. All double gates to include center fixed post.  
Addendum No. 1 - 10/19/2020

GENERAL NOTES

1. Dimensions are given in feet. Contractor to verify all dimensions, quantities, and requirements prior to ordering and installation.
2. Contractor to locate all utilities prior to drilling footings in all areas of work.
3. Contractor to submit detailed shop drawings, SPECIFIC TO THIS SITE, for review. Include full layout and location of all posts, gate details, hardware details, specifications for review and approval prior to fabrication.
4. Prior to installation, walk site with District to review layout.
5. All panic hardware to be from Von Duprin AK 998-100.

SITE PLAN KEY NOTES

- 32.01 4'-0" high chain link fence, see detail XA-12.1, typ.
- 32.02 4'-0" high chain link gate, with as identified on plan. See detail XA-12.1.
- 32.03 6'-0" high ornamental fence, see detail XA-12.1, typ.
- 32.04 6'-0" high ornamental gate, with as identified on plan. Refer to XA-12.1.
- 32.05 6'-0" high chain link fence, see detail XA-12.1, typ.
- 32.06 Concrete ramp, (phase 2) Contractor to refer to grading plan and detail XA-12.1.

SITE PLAN LEGEND

- Ornamental Fence, typ.
- Chain link fence, typ.

Remove bollard

(E) Bollard: Cut flush to existing paving. Fill hole with concrete to be finished level with adjacent paving elevation.

Photo 1 - see next sheet

Regulatory Agency Approval



McKim Design Group  
4886 Cherry Avenue, First Floor, San Jose, CA 95118  
ph: (408) 907-6110 fax: (408) 907-8112

Engineer Seal



Architect Seal

Project Title  
**SIERRAMONT MIDDLE SCHOOL**  
3166 KIMBLEE DRIVE  
SAN JOSE, CA 95132  
**FENCING**

Client  
BERRYESSA UNION SCHOOL DISTRICT  
1376 PIEDMONT ROAD  
SAN JOSE, CA 95132

No.	Revisions/Submissions	Date

Drawing Title  
**SITE PLAN**

Project No. 2008	Date April 29, 2020
CD	Drawing Number A-1.1

**BUSD – SIERRAMONT MIDDLE SCHOOL  
ORNAMENTAL FENCES AND GATES PROJECT  
PHOTO REFERENCES TO SHEET A-1.1**



Photo 1: Temporarily remove knob box as necessary to accommodate for fence installation and reinstall at existing location.



Photo 2: Trim shrub to accommodate for fence installation



Photo 3: Trim shrub to accommodate for fence installation



Photo 4: Black out with approved traffic marking paint from planter corner to end of asphalt paving 6" past top edge of seat wall. Do not paint over "NO PARKING" sign. Do not paint vertical planter wall.



Photo 5: Trim shrub to accommodate for fence installation



Photo 6: Relocate existing ADA parking sign and install new pole to be centered between new fence and wheel stop. Remove existing pole, footing, and backfill.

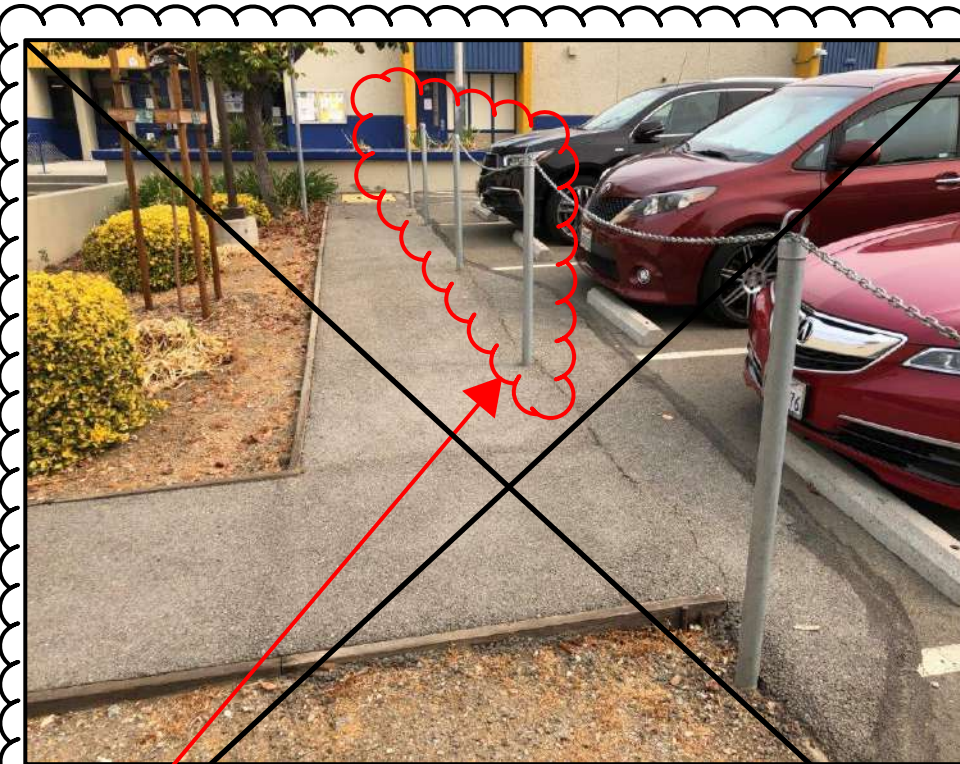


Photo 7: Quantity four (4) existing posts to be cut flush to paving finish level. Fill holes with concrete. Cut chain and weld chain together at existing post located new fence corner.

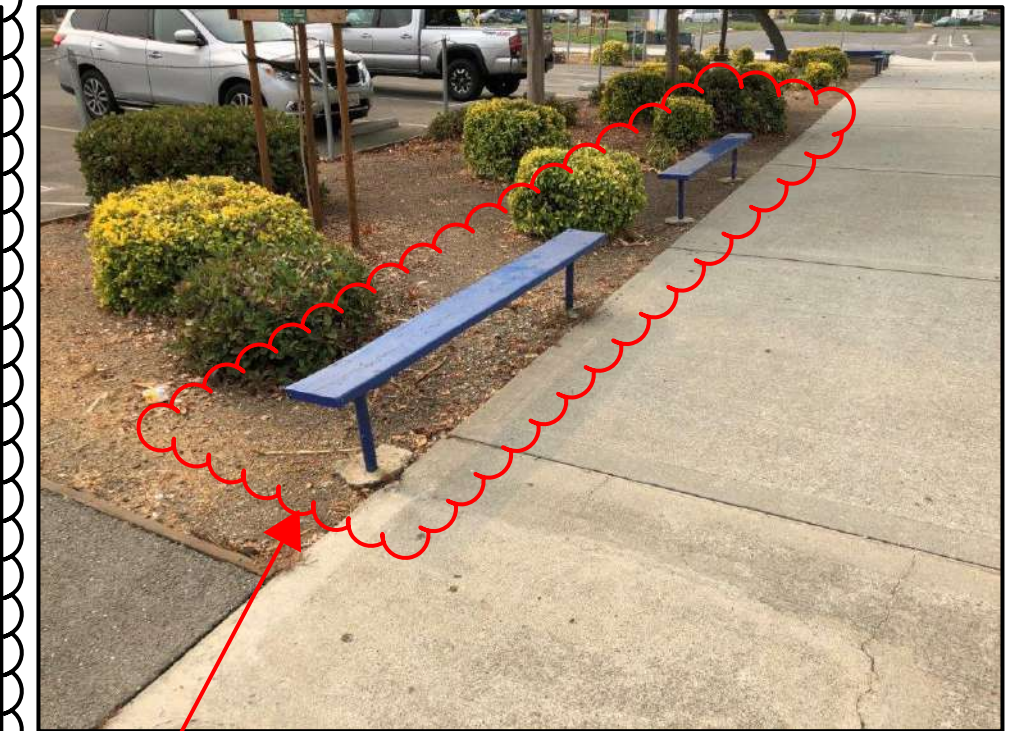
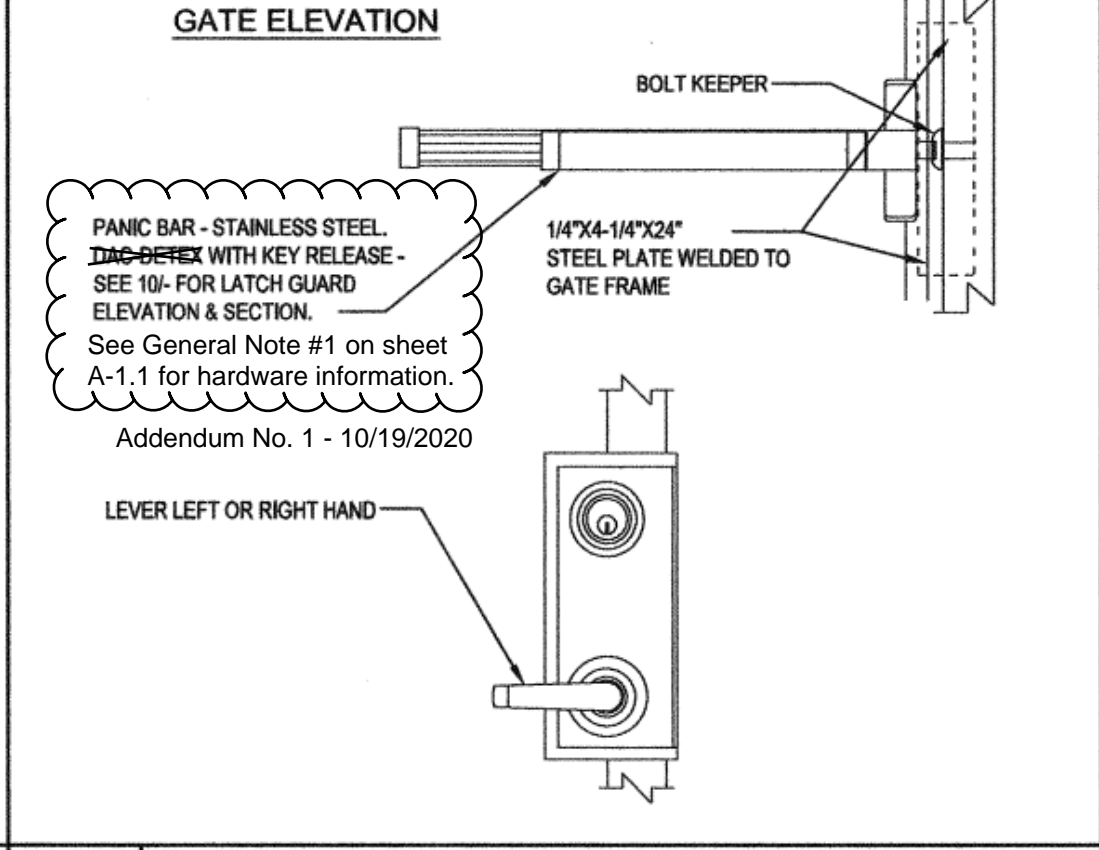
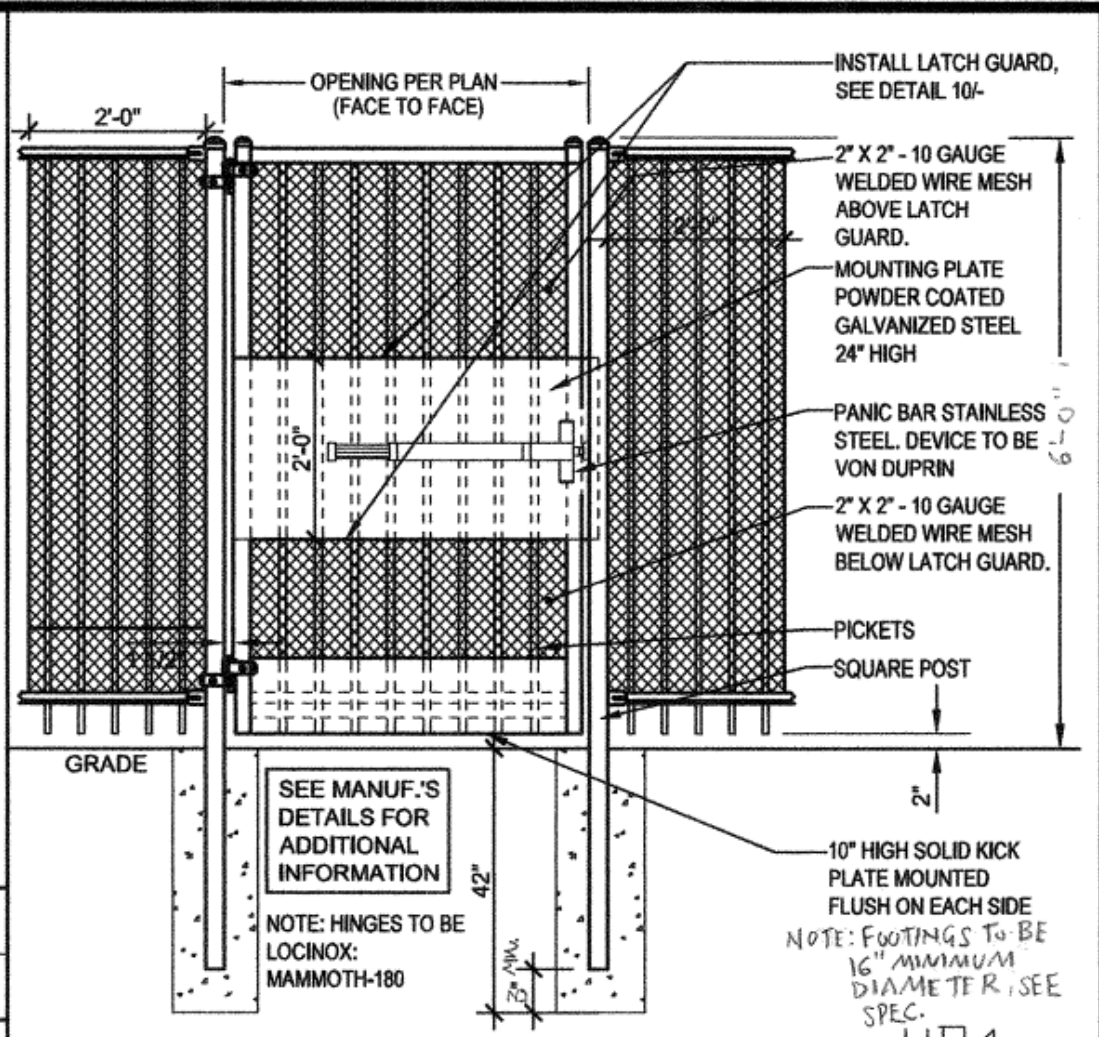
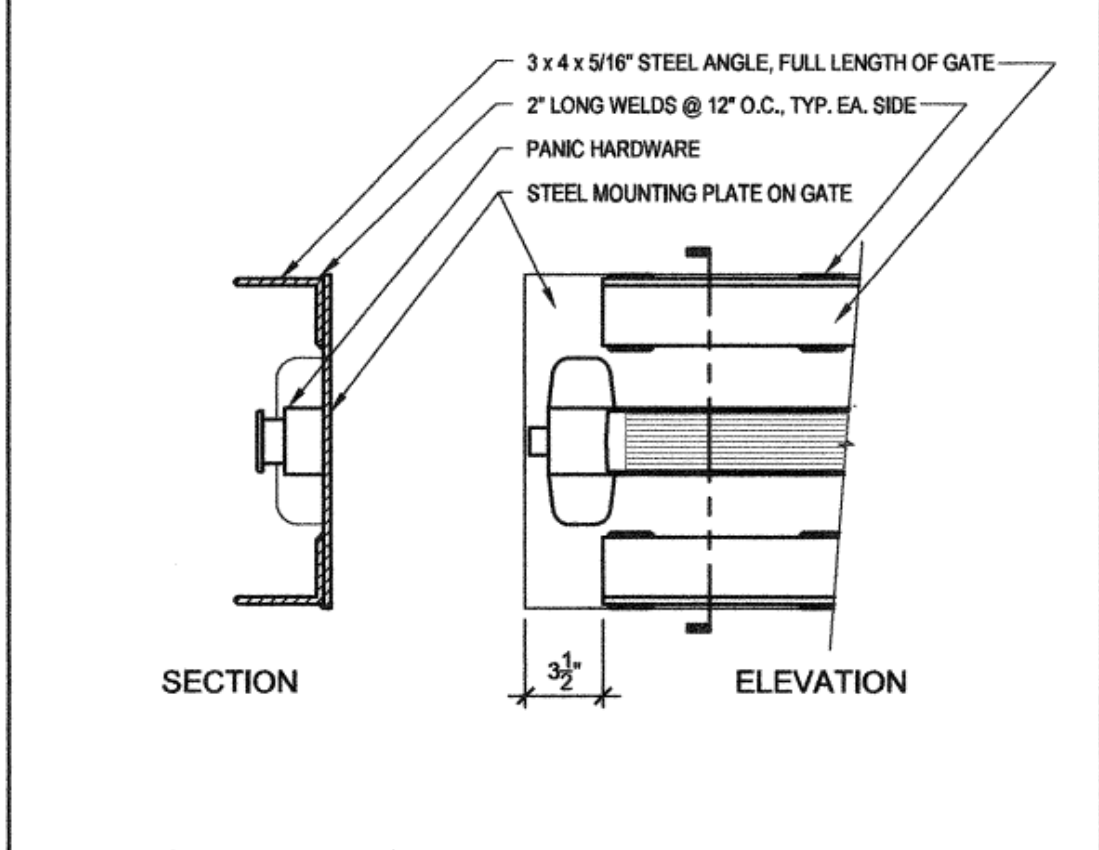


Photo 8: Quantity two (2) existing benches to be removed. Remove concrete footings and backfill.



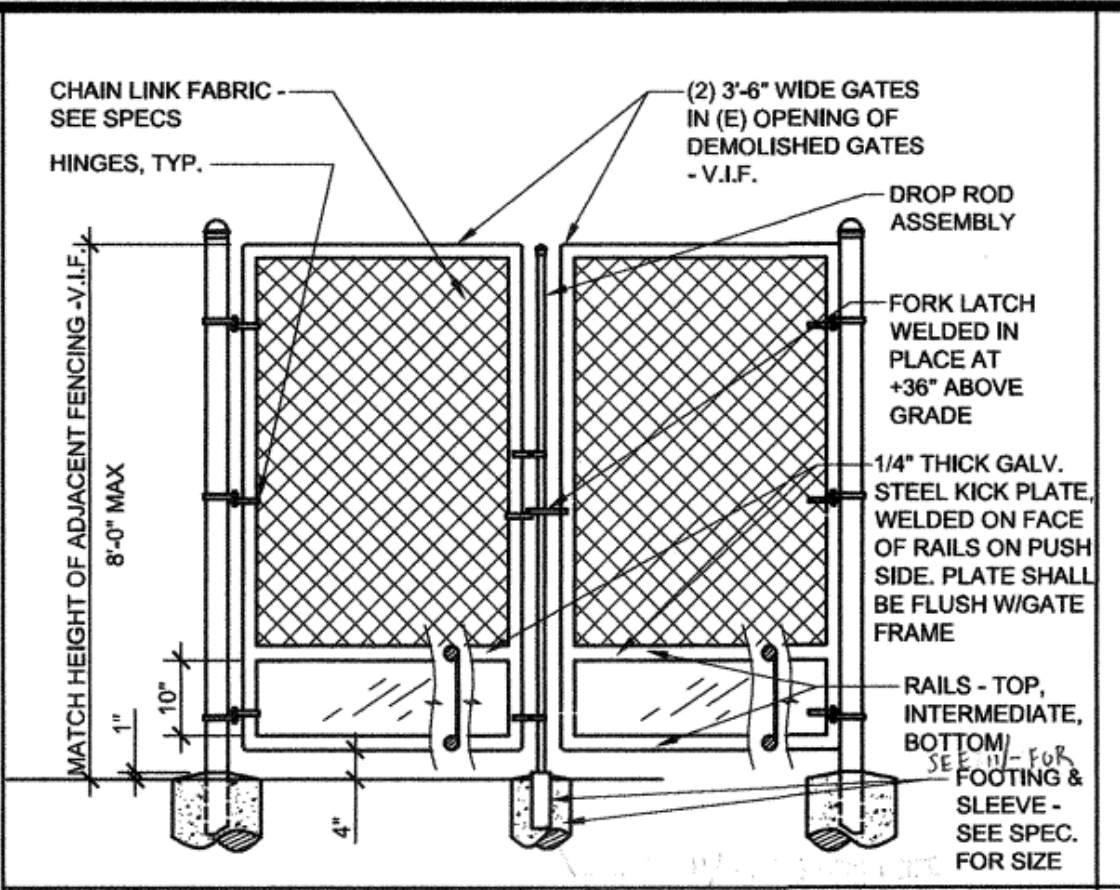
11 PREHUNG SWING GATE WITH PANIC BAR

N.T.S.



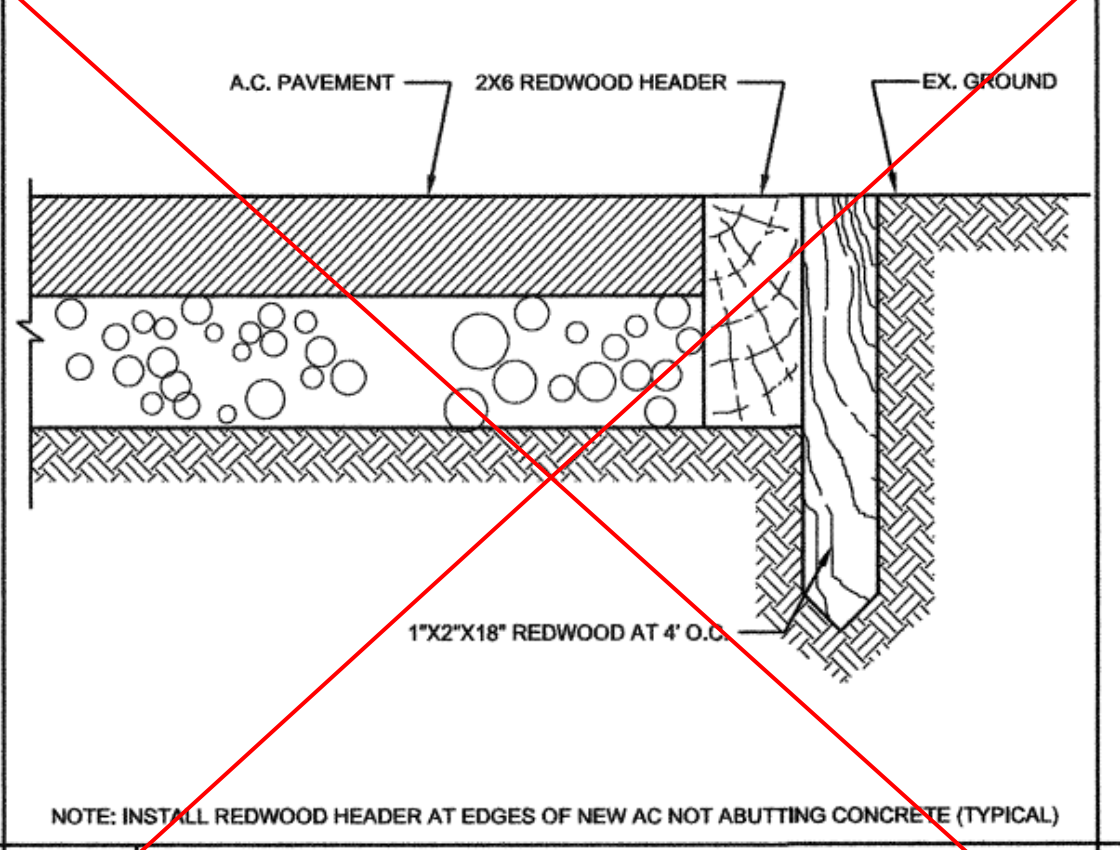
10 LATCH GUARD

1 1/2" = 1'-0"



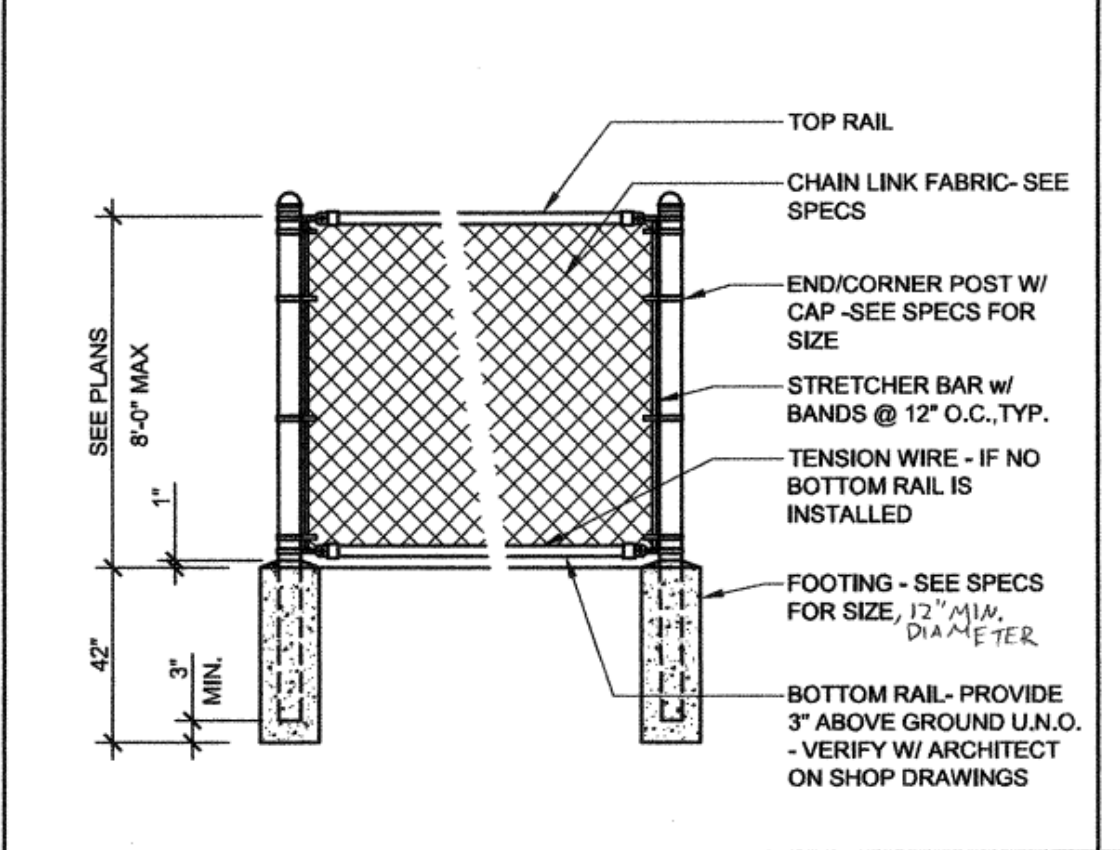
8 CHAIN-LINK FENCE - GATE W/ KICKPLATE

1/2" = 1'-0"



7 EDGE OF A.C. PAVING

N.T.S.



6 CHAIN-LINK FENCE / ORNAMENTAL FENCE FOOTING SIZE

1/2" = 1'-0"