

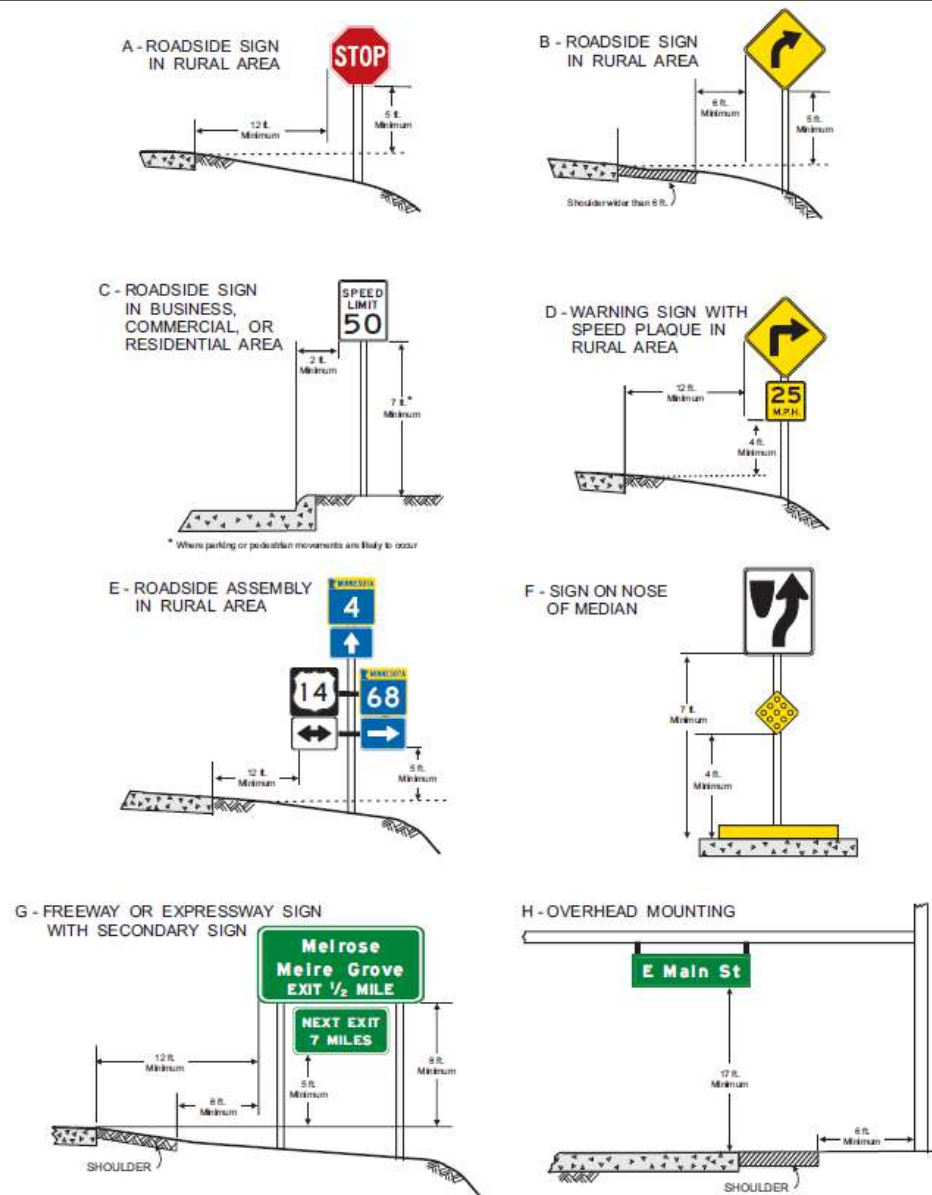
Chapter 5

Select Figures from MN MUTCD

Sign Plan Design for At-Grade Intersections

June 2017



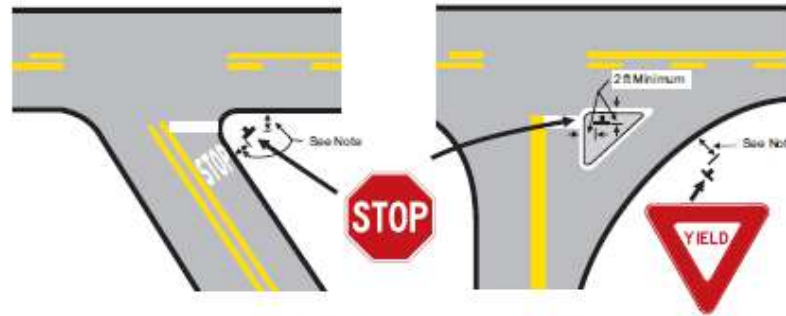


Note:
 See Section 2A.19 for reduced lateral offset distances that may be used in areas where lateral offsets are limited, and in business, commercial, or residential areas where sidewalk width is limited or where existing poles are close to the curb.

Figure 2A-2 Examples of Heights and Lateral Locations of Sign Installations

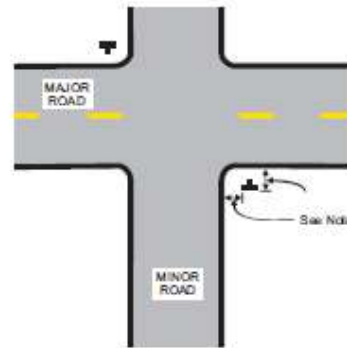
Also see Figure 6.1 in the TEM

MN M

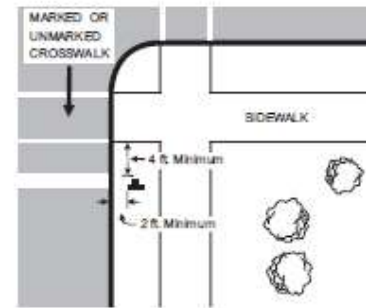


A - ACUTE ANGLE INTERSECTION

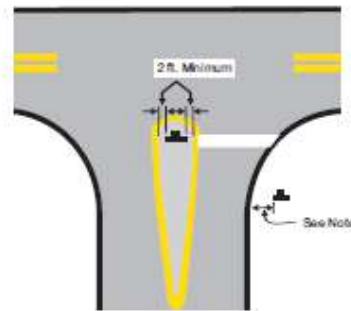
B - CHANNELIZED INTERSECTION



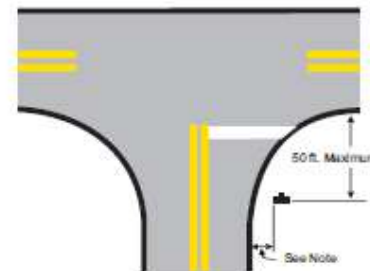
C - MINOR CROSSROAD



D - URBAN INTERSECTION



E - DIVISIONAL ISLAND

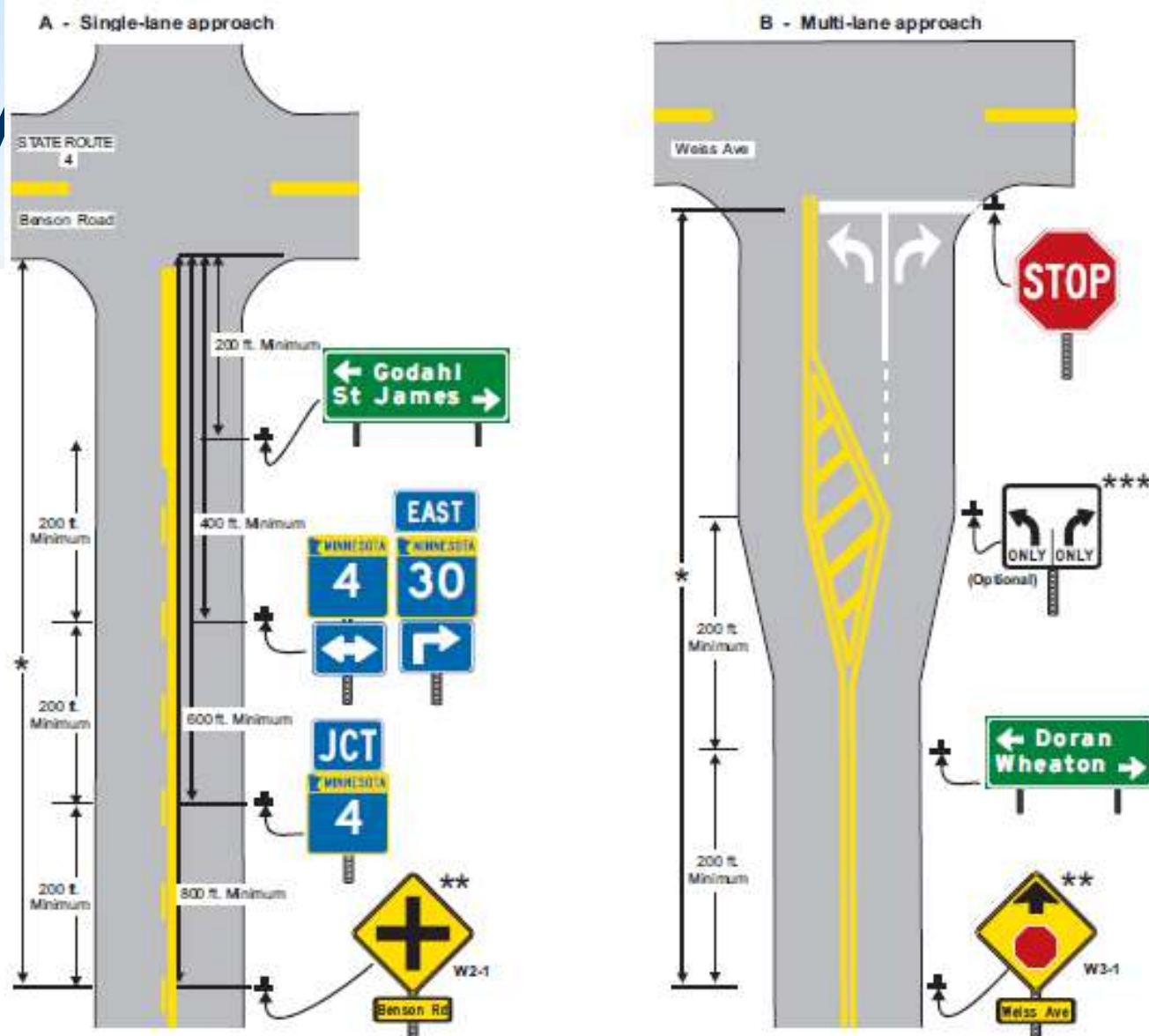


F - WIDE THROAT INTERSECTION

Note: Lateral offset is a minimum of 6 feet measured from the edge of the shoulder, or 12 feet measured from the edge of the traveled way. See Section 2A.19 for lower minimums that may be used in urban areas, or where lateral offset space is limited.

Figure 2A-3 Examples of Locations for Some Typical Signs at Intersections

M



Notes: See Chapter 2D for information on guide signs and Part 3 for information on pavement markings

*See Table 2C-4 for the recommended minimum distance
 **See Section 2C.46 for the application of the W2-1 sign and Section 2C.36 for the application of the W3-1 signs
 ***See Section 2B.22 for the application of Intersection Lane Control signs

Figure 2A-4 Relative Locations of Regulatory, Warning, and Guide Signs on an Intersection Approach

MN MUTCD Figures

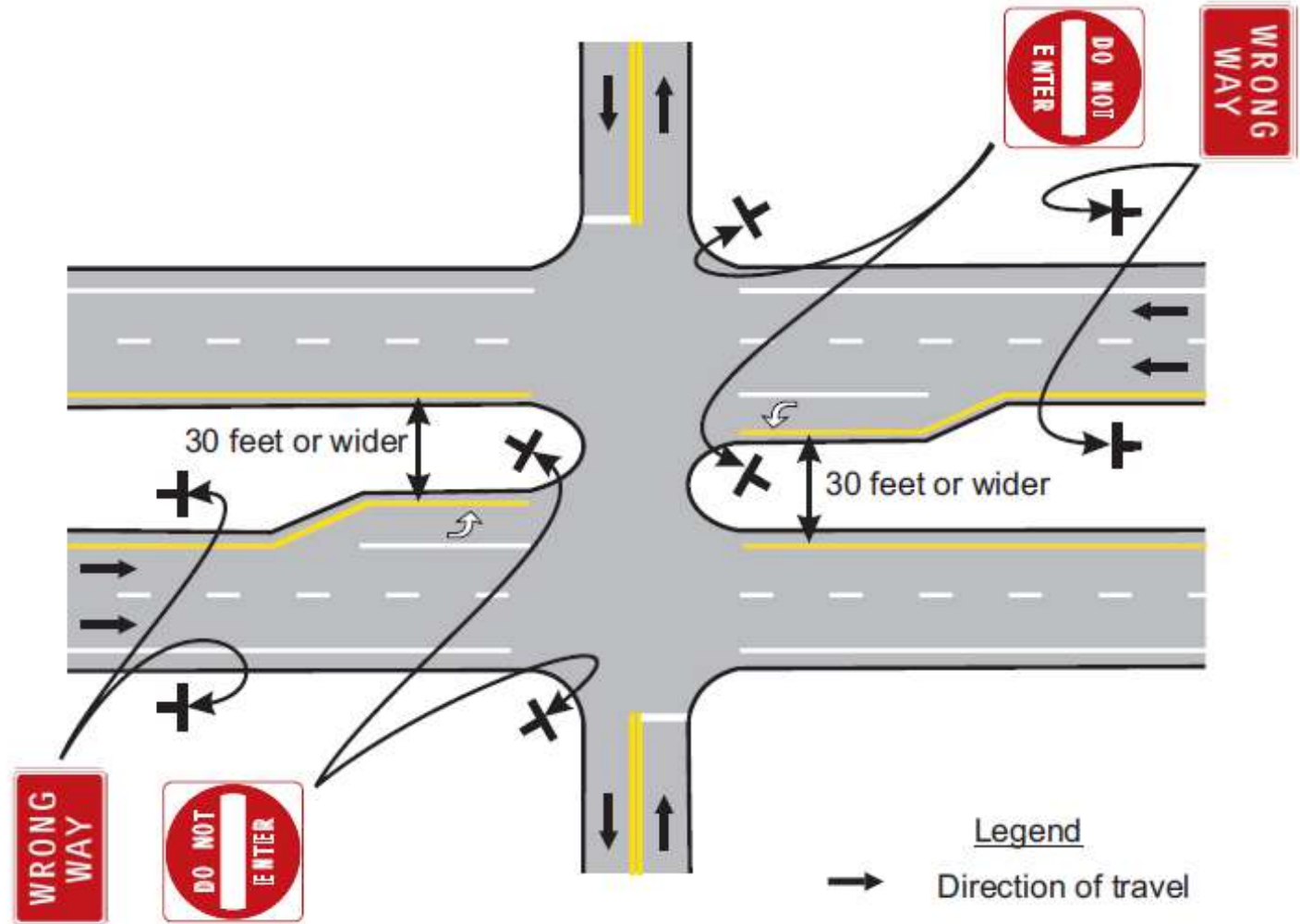


Figure 2B-12. Locations of Wrong-Way Signing for Divided Highways with Medians of 30 Feet or Wider

MN MUTCD Figures

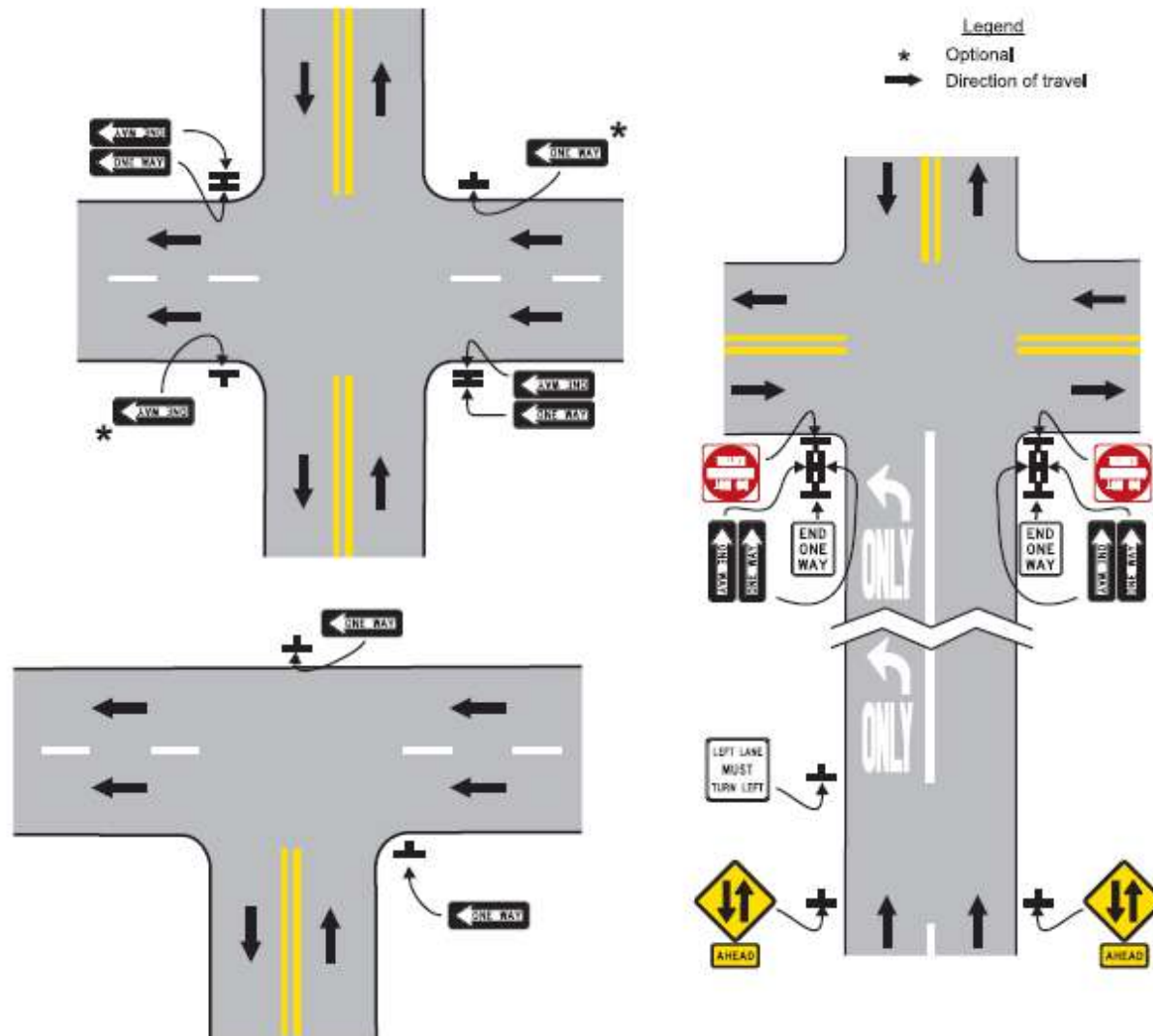
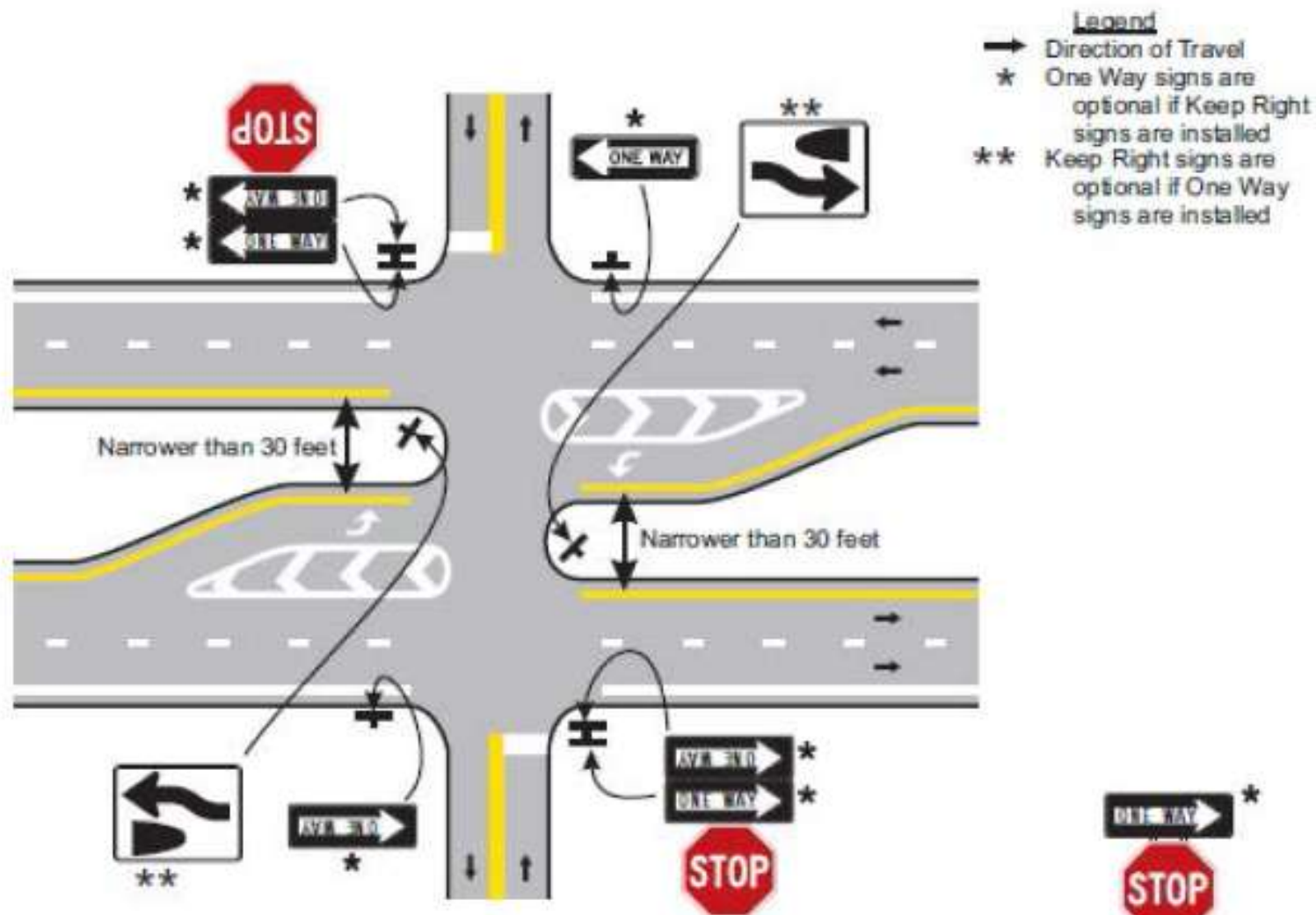


Figure 2B-14. Locations of ONE WAY Signs



Notes:
 See Figure 2B-12 for examples of placing
 DO NOT ENTER and WRONG WAY signing.
 See Figure 2B-15 if median is 30 feet or more
 in width.



**Figure 2B-17. ONE WAY Signing for Divided Highways with Median Widths
 Narrower Than 30 Feet and Separated Left-Turn Lanes**

MN MUTCD Figures

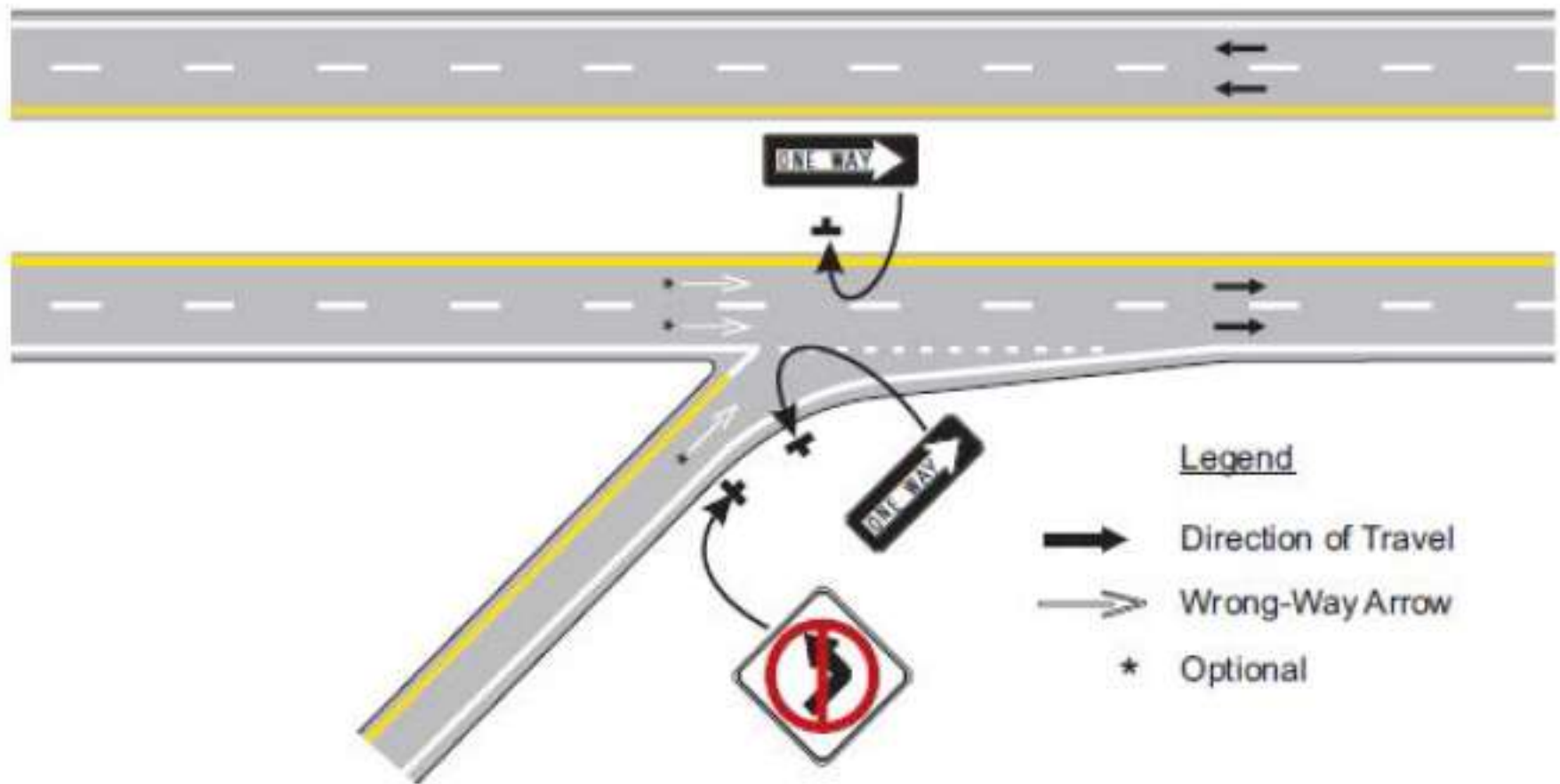


Figure 2B-19. Example of Application of Regulatory Signing and Pavement Markings at an Exit Ramp Termination Where the Design Does Not Clearly Indicate the Direction of Flow

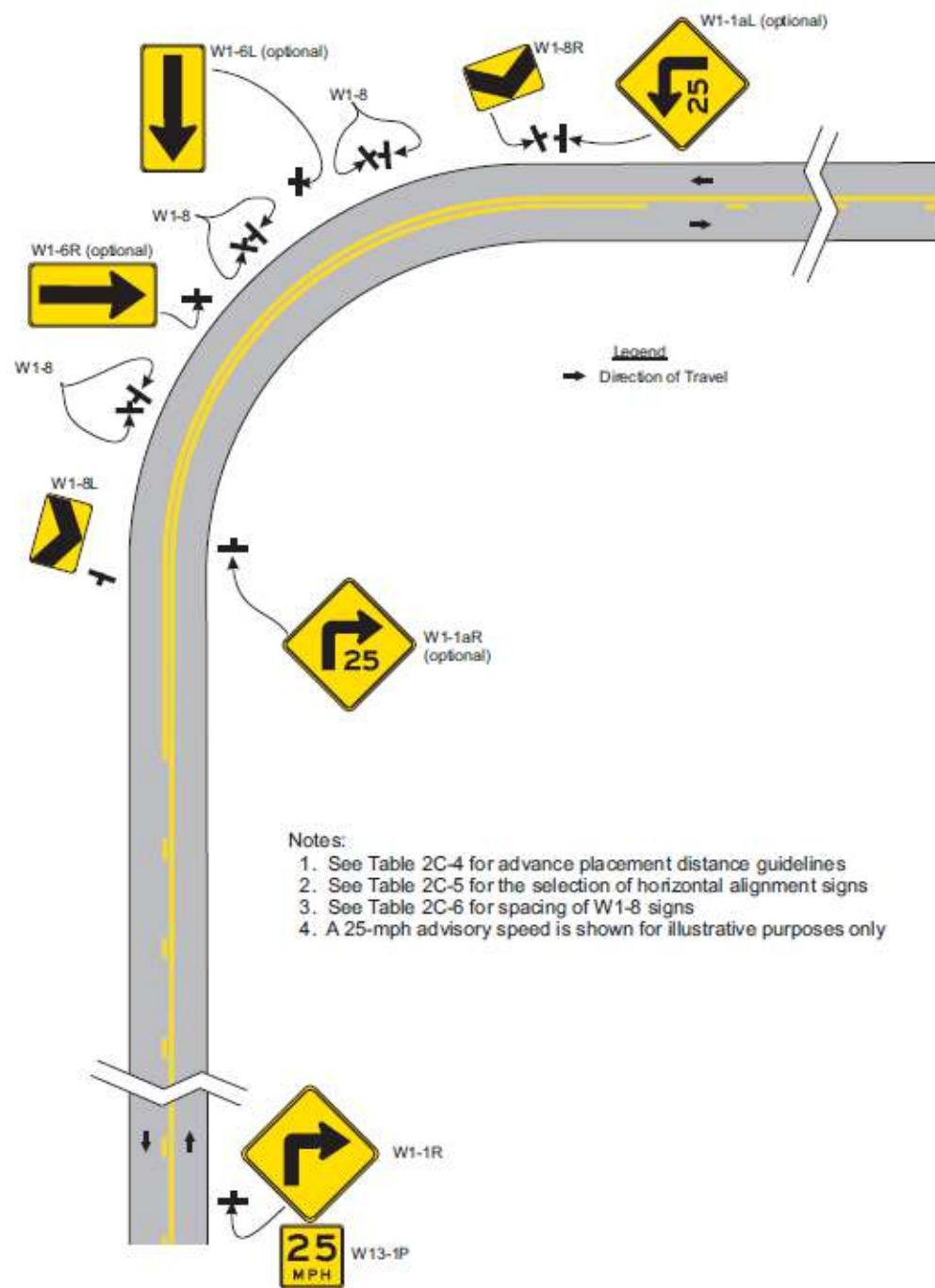


Figure 2C-2. Example of Warning Signs for a Turn

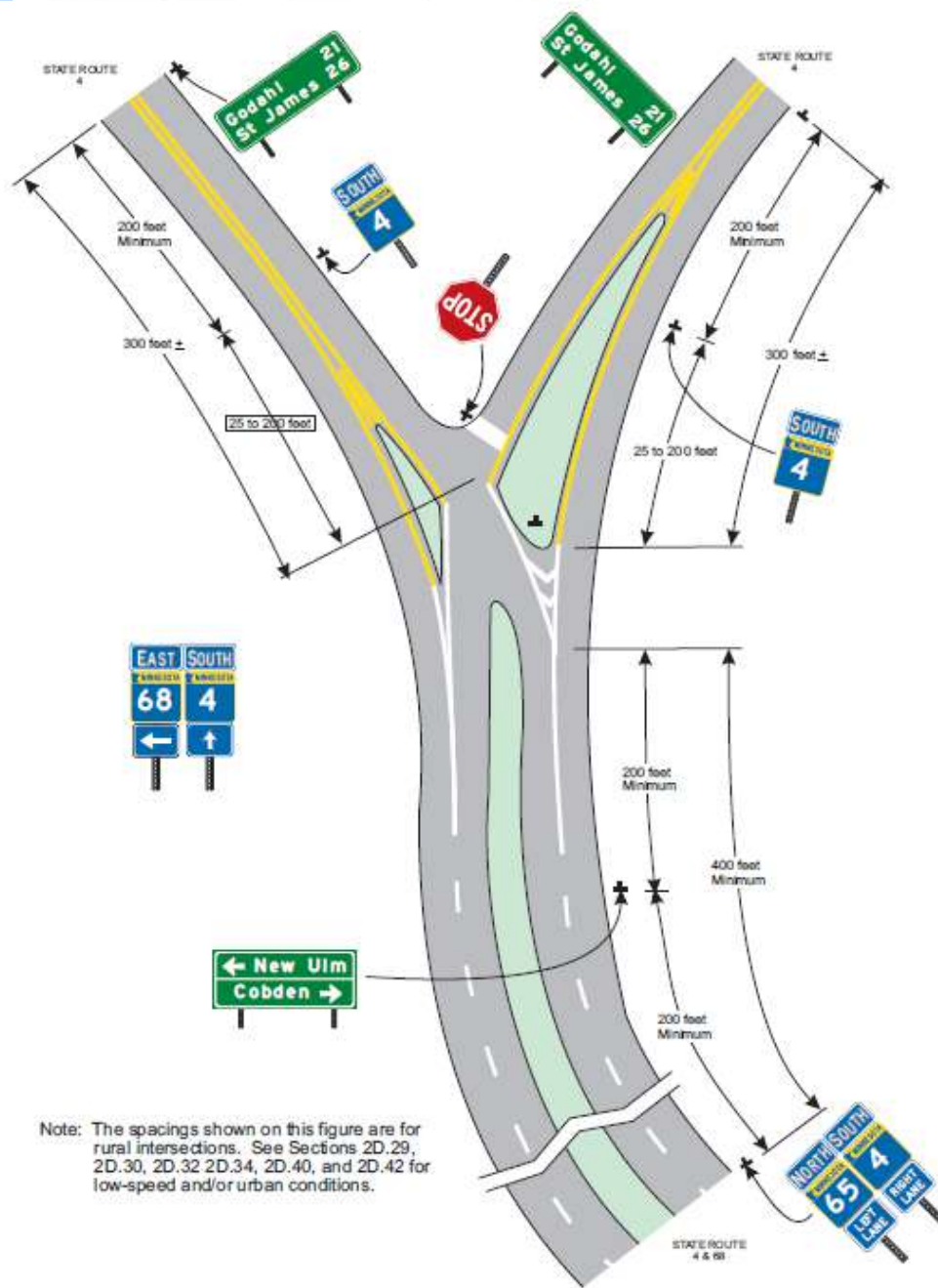


Figure 2D-6. Illustration of Directional Assemblies and Other Route Signs
(For One Direction of Travel Only)
(Sheet 4 of 4)

MN MUTCD Figures

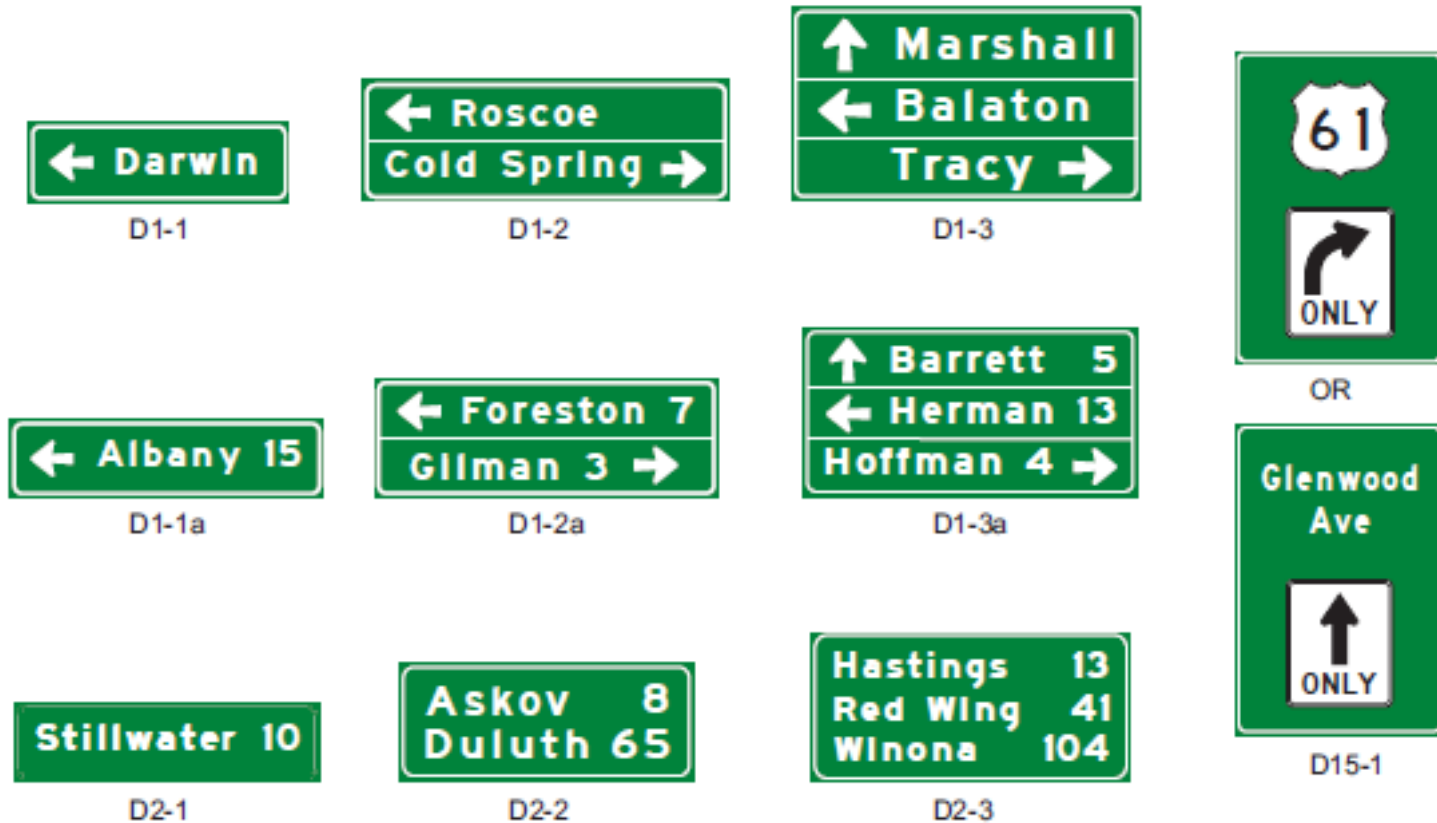


Figure 2D-7. Destination and Distance Signs

MN MUTCD Figures

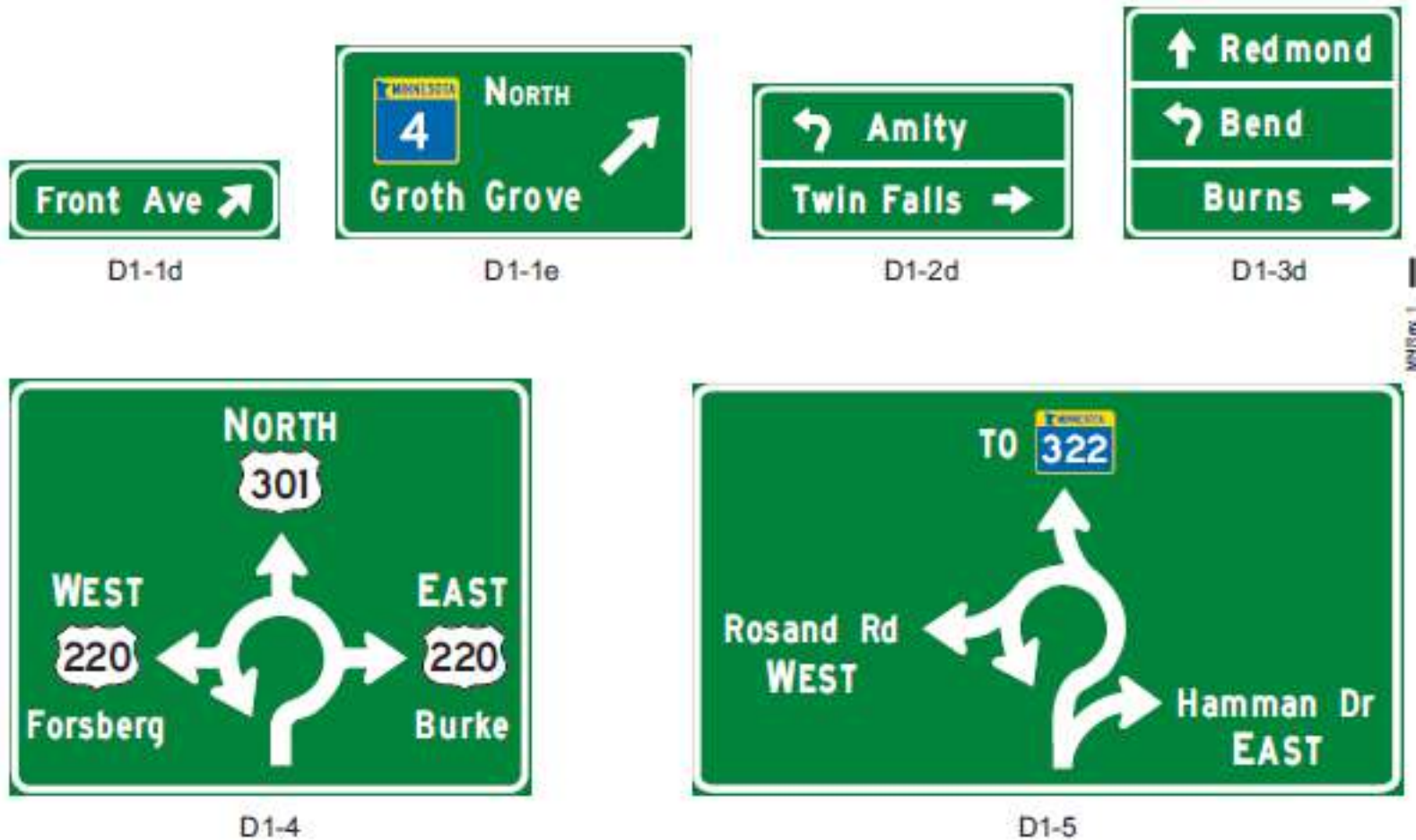


Figure 2D-8. Destination Signs for Roundabouts

MN

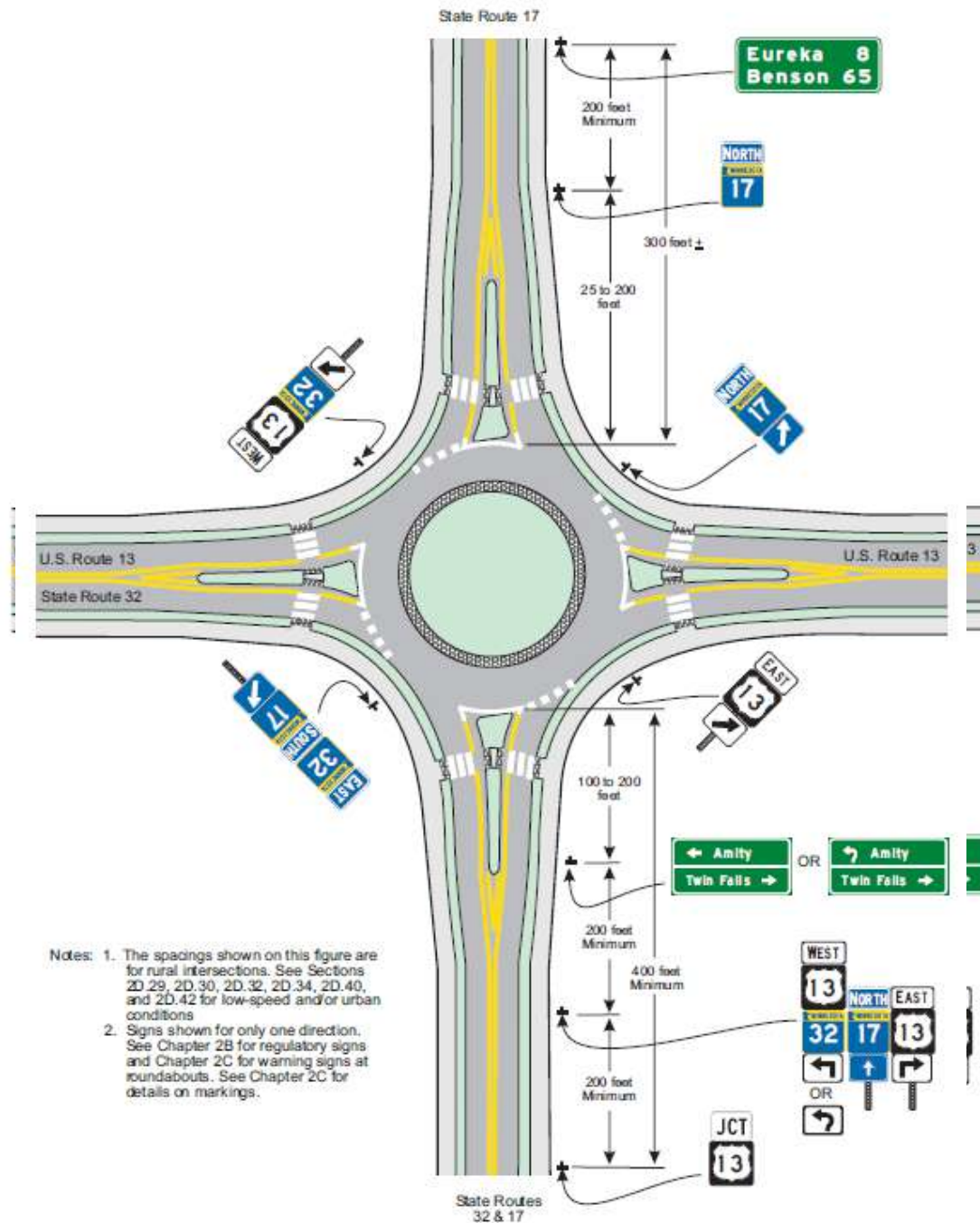


Figure 2D-9. Examples of Guide Signs for Roundabouts (Sheet 2 of 2)

MN

Page 5-66



Figure 2D-11. Example of Interchange Crossroad Signing for a One-Lane Approach

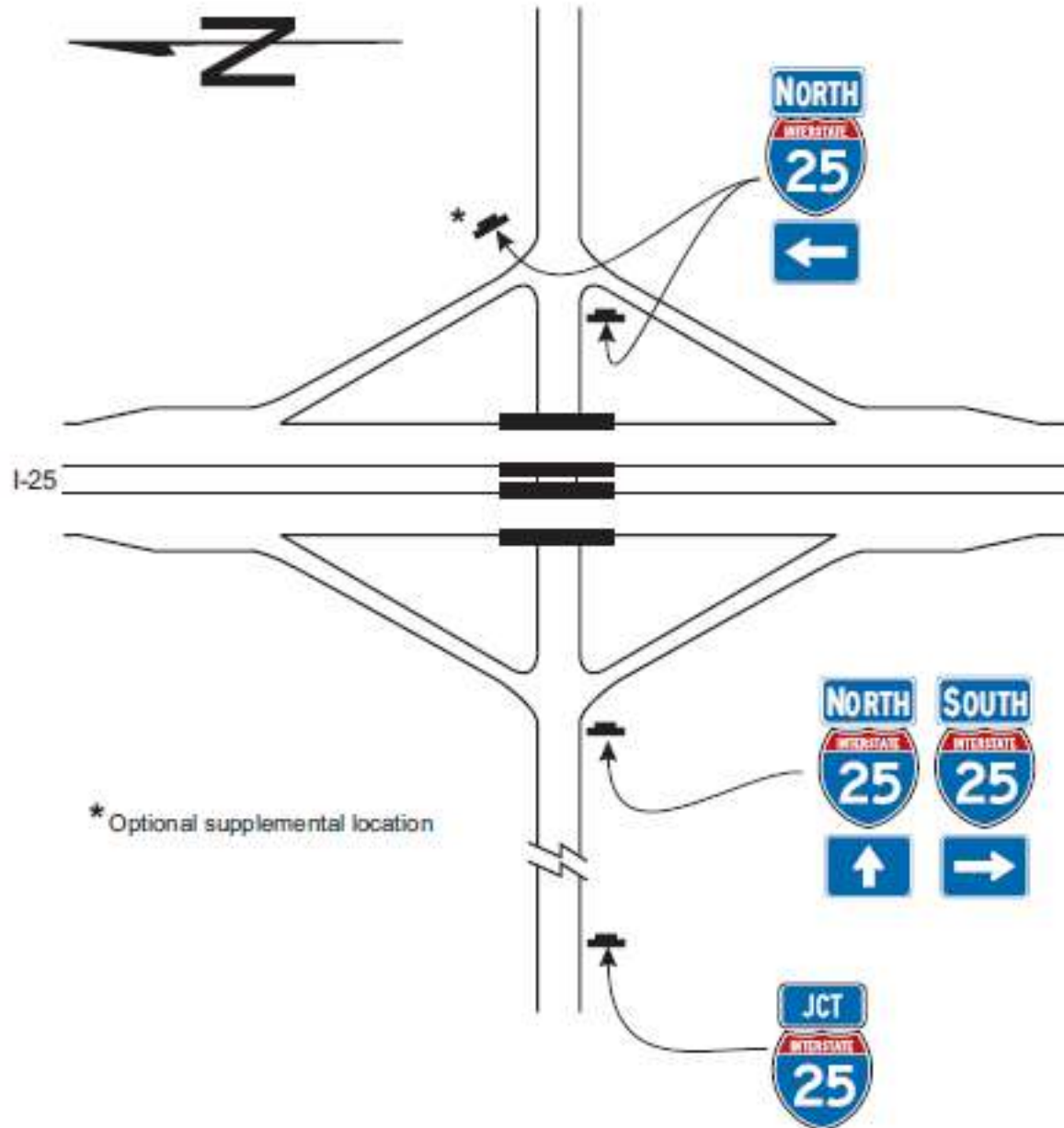


Figure 2D-12. Example of Minor Interchange Crossroad Signing

MN

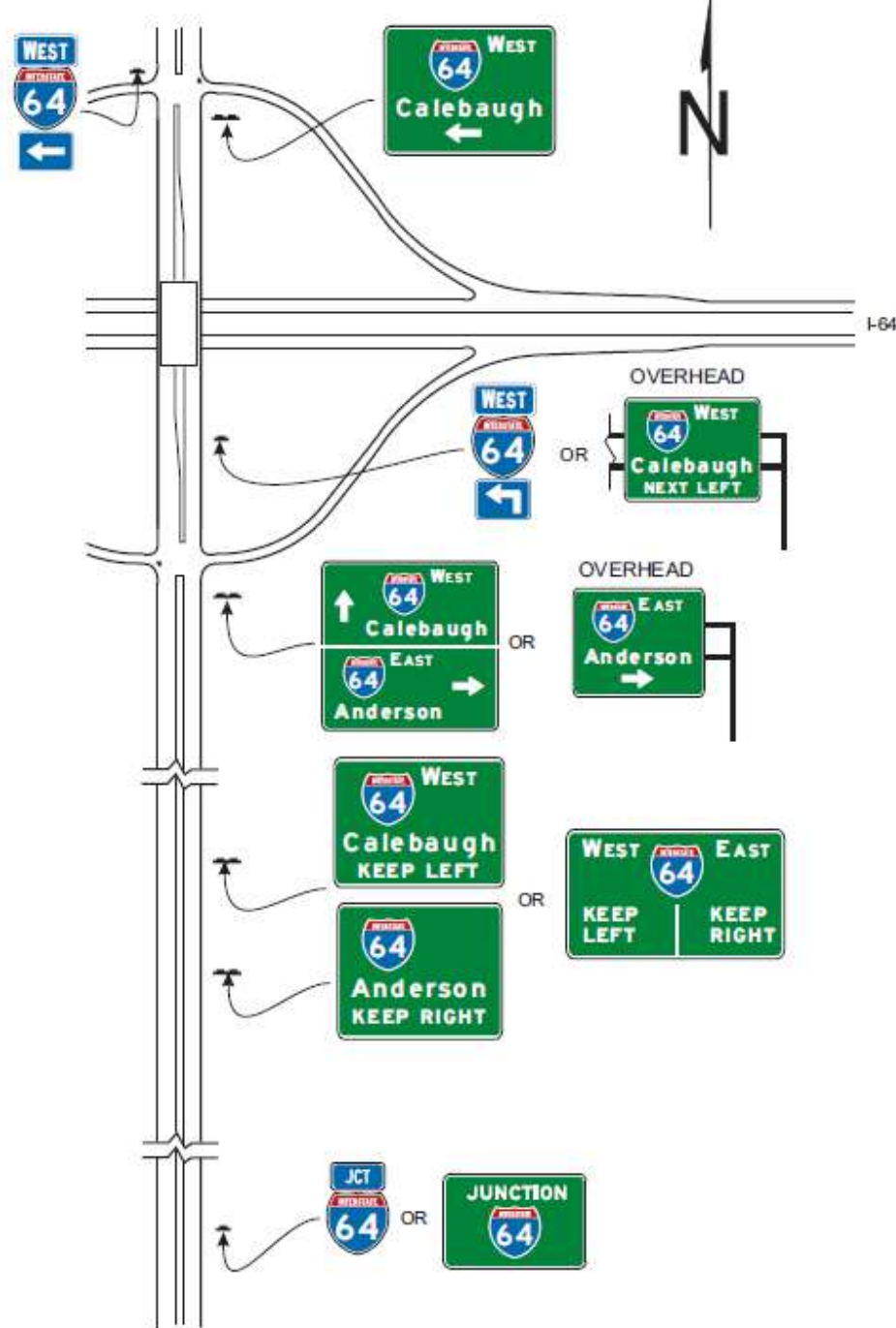


Figure 2D-13. Example of Multi-Lane Crossroad Signing for a Diamond Interchange

MN

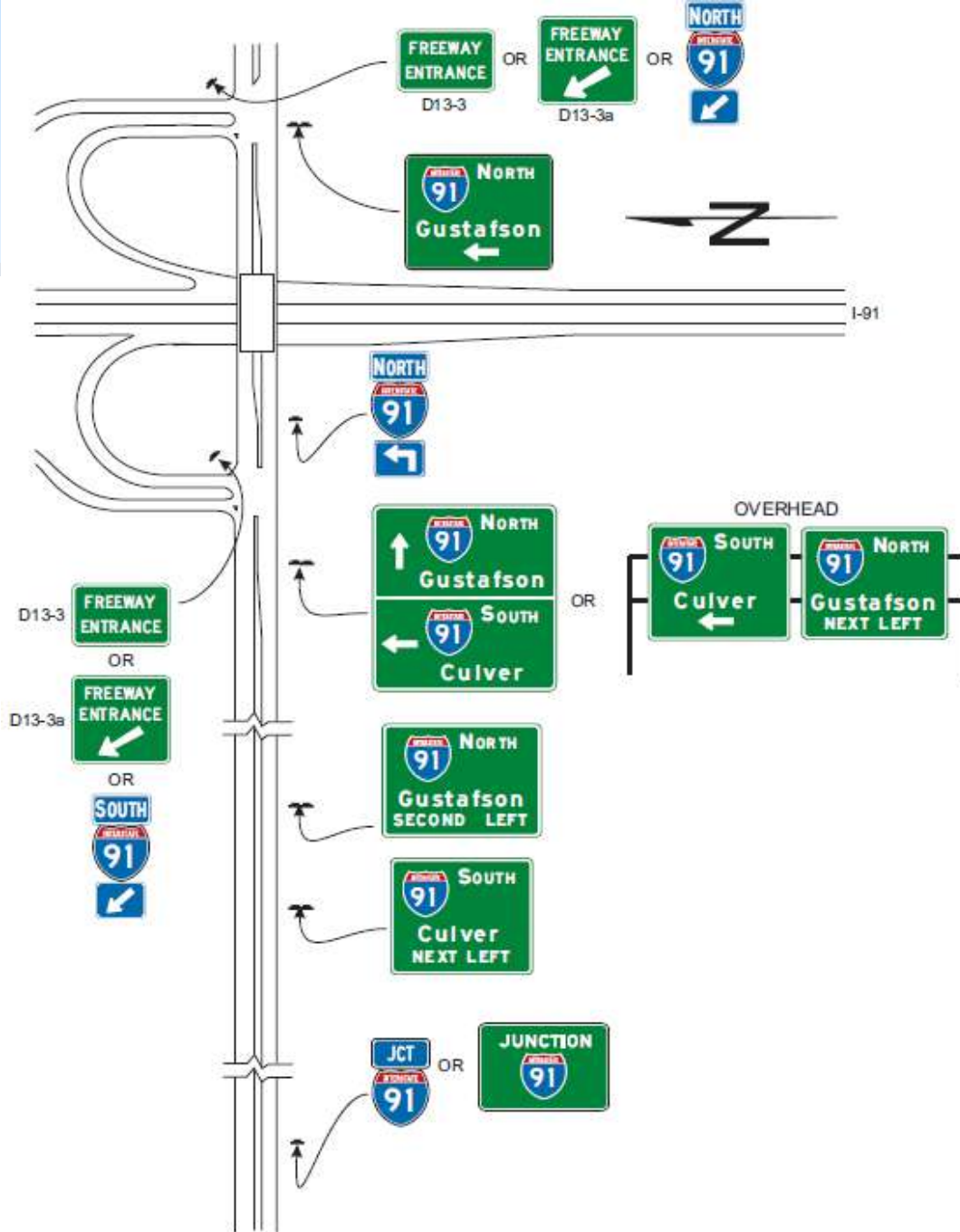


Figure 2D-14. Example of Multi-Lane Crossroad Signing for a Partial Cloverleaf Interchange

MN

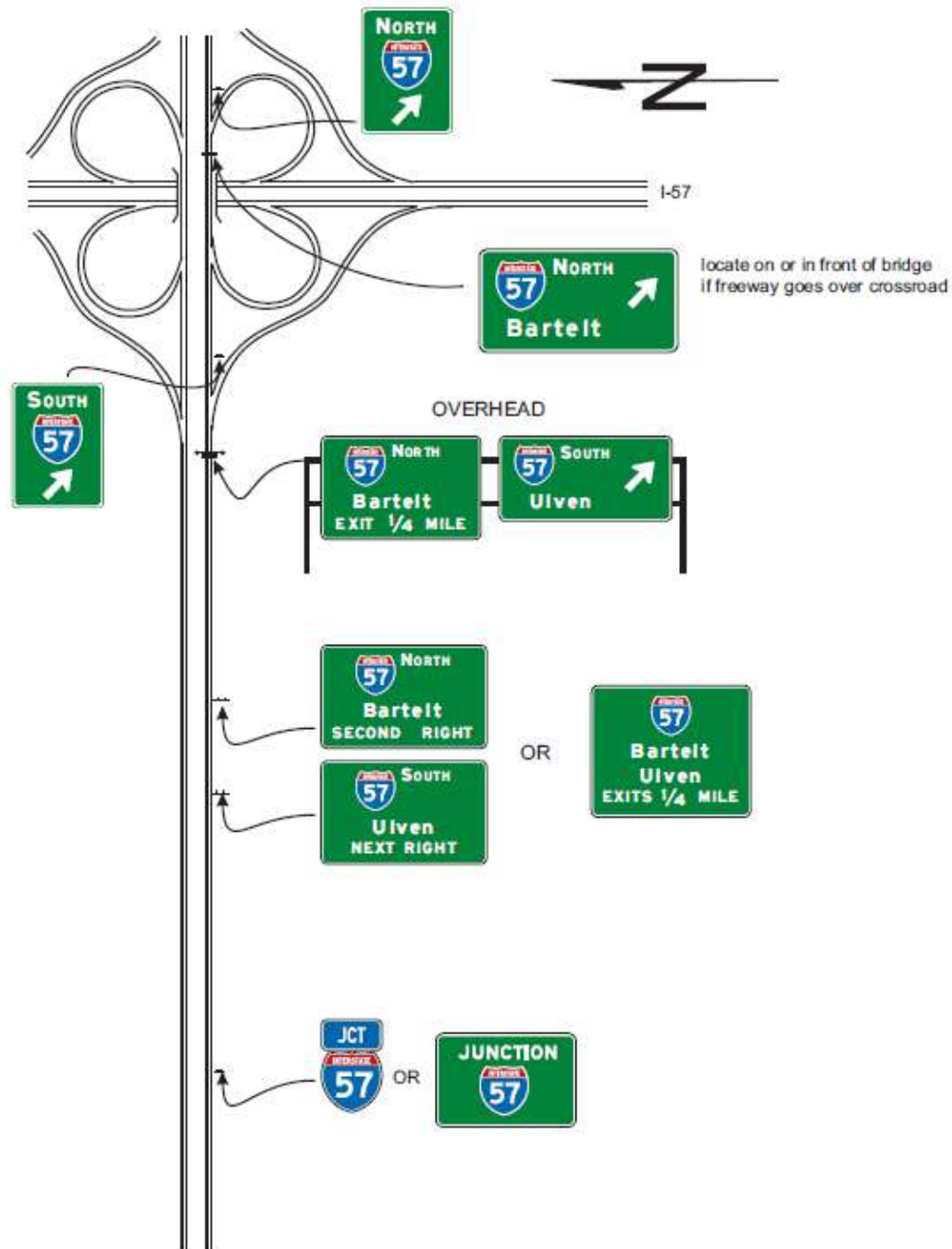


Figure 2D-15. Examples of Multi-Lane Crossroad Signing for a Cloverleaf Interchange

MN MUTCD Figures

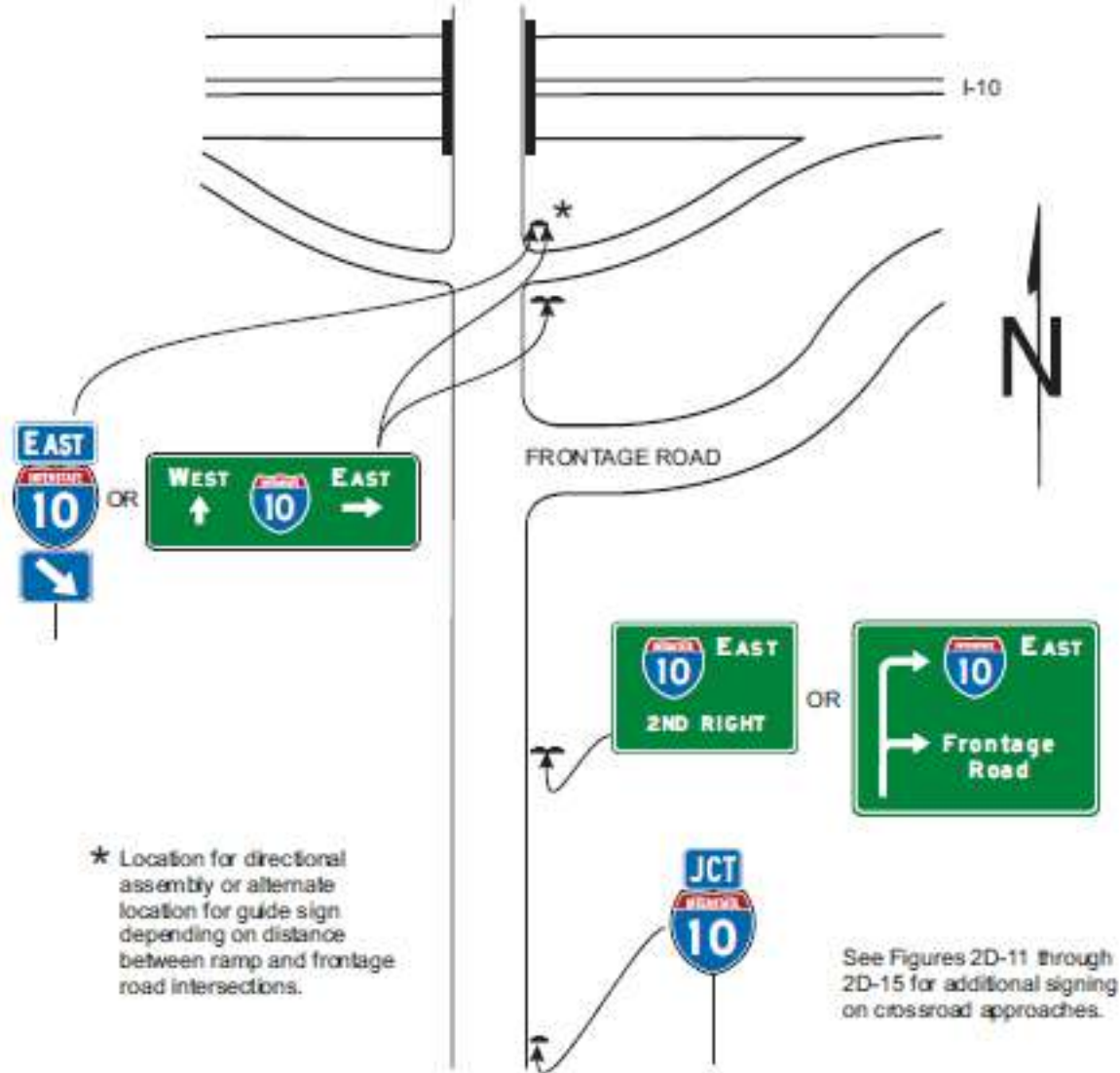


Figure 2D-16 Example of Crossroad Signing for an Entrance Ramp with a Nearby Frontage Road