



T.I.S. Digital Backpack March 20, 2014



FROM THE PRINCIPAL'S OFFICE

SBAC Testing at TIS

Connecticut's State Department of Education informed us on Friday, March 14 that Smarter Balanced has shifted the first week of testing dates for the Field Test. SBAC testing was originally scheduled to begin for Tolland Intermediate School fifth graders on Thursday, March 20. Testing will now begin on Thursday, March 27. A final version of the revised schedule will be sent out via a TISNews email. Fifth grade testing dates are listed below.

Thursday, March 27, 2014	5			Zangerl	Leser
Friday, March 28, 2014	5	Storozuk	Slayton	Grabowski	Biddle
Monday, March 31, 2014	5	McCarthy	Racco	Campbell	Kneeland
Tuesday, April 01, 2014	5			Zangerl	Leser
Wednesday, April 02, 2014	5	Storozuk	Slayton	Grabowski	Biddle
Thursday, April 03, 2014	5	McCarthy	Racco	Campbell	Kneeland
Friday, April 04, 2014	5			Zangerl	Leser
Monday, April 07, 2014	5	Storozuk	Slayton	Grabowski	Biddle
Tuesday, April 08, 2014	5	McCarthy	Racco	Campbell	Kneeland
Tuesday, April 22, 2014	5			Zangerl	Leser
Wednesday, April 23, 2014	5	Storozuk	Slayton	Grabowski	Biddle
Thursday, April 24, 2014	5	McCarthy	Racco	Campbell	Kneeland

Recess Field Mud

Melting snow and a lack of grass on the recess field has left us with a significant amount of mud. Each morning we put cones out on the field to block off muddy areas. Unfortunately, the size of our recess field will be significantly reduced as we await warmer weather.





T.I.S. Student Council

Congratulations to all homerooms for your hard work on your Snow Creatures this year!



Overall 1st Place:

Mrs. Bockus' Class, the UConn Husky Basketball Player

Overall 2nd Place:

Mr. Campbell's Class, the Hump Day Camel

Overall 3rd Place:

Mrs. Racco's Class, Minion vs. Flappy Bird

3rd Grade:

1st place: Olympic Bobsled group of 4, Mrs. Arner's class, Mrs. Fischer's class, Mrs. Drury's class, Mrs. Cyr's Class

2nd place: Mrs. Arner's Class: Olympic Jamaican Bobsledder

3rd place: Mrs. Williams' Class: Olympic Snowboarder

4th Grade:

1st place: Mrs. Bockus' class, Uconn Husky Basketball Player

2nd place: Mrs. Lemelin's class, Olaf from "Frozen"

3rd place: Mrs. Hurley's class, Flappy Bird

5th Grade:

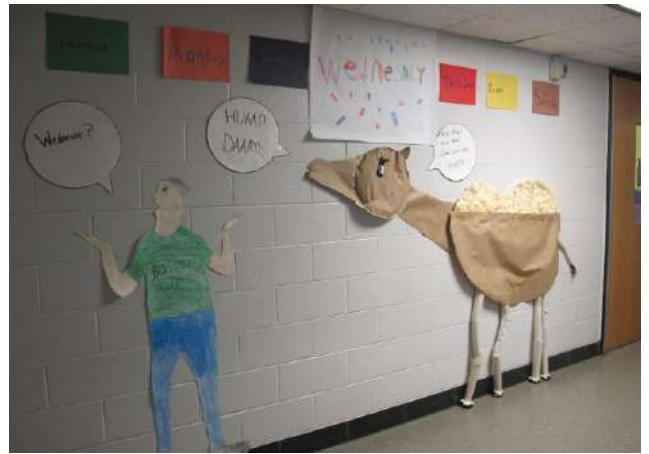
1st place: Mr. Campbell's class, the Hump Day Camel

2nd place: Mrs. Racco's class, Minion vs. Flappy Bird

3rd place: Mr. Slayton's class, characters from "Frozen"



Mrs. Bockus' Class



Mr. Campbell's Class



Mrs. Racco's Class

UPCOMING EVENTS

March

- 24 Grade 5 TheatreWorks Assembly,
2:00, APR
- 28 SPORTS TEAM DAY

April

- 2 Book Fair Begins
- 4 Movie Night, 7-9:30 p.m.
- 7 PTO Meeting @ Birch Grove, 7:00
- 8 FIESTA DAY
- 9 Music Times Three Concert, 7 pm
- 10 Coffee with The Principals
- 10 Book Fair Ends
- 14-18 April Break
- 21-25 Jump Rope for Heart (during gym classes)
- 22 Earth Day
- 25 All Grade 3 to Sturbridge Village
- 28 Zangerl/Leser to Boston
- 29 Storozuk/Slayton to Boston
- 29 After School Meetings
- 30 Grabowski/Biddle to Boston

Tolland Board of Education

Communications and Outreach Committee

Website Task Force

The Communications and Outreach committee is seeking residents interested in serving on a website task force. This task force will be charged with reviewing and making recommendations regarding the content, capability and design of the Tolland school district's main website as well as the four schools websites. Service on this task force will be from April 1 – September 30, 2014. Website design knowledge is preferred, but not mandatory.

Interested residents should contact Karen Moran at kmoran@tolland.k12.ct.us or 860-559-3066.

The TIS Green Team presents--

Movie Night

Friday, April 4

7:00 – 9:00



A remarkable story of individual triumph and family bonds.

Admission is FREE!

Snacks will be provided for a small fee.

Bring your sleeping bags and picnic blankets and join us for a night of family fun!!

Tolland Intermediate School

96 Old Post Road
Tolland, CT 06084
860-870-6885

Dear 3rd Grade "Music Times Three" Parents,

Music Times Three members will present the Annual Assembly Concert for all Birch Grove second graders on Friday, April 11, 2014. The goal of this concert is to ease student transition from Birch Grove to Tolland Intermediate School via "almost" fourth grade role models. In addition, your child has a wonderful opportunity to demonstrate growth and new skills by their membership in "Music Times Three" this past year! I also would appreciate some volunteer chaperones for the trip if any of you are available. I would really appreciate it! Please contact me with any questions or concerns.

rbattersby@tolland.k12.ct.us 860-870-6885 ext. 238

Assembly Concert date: Friday, April 11, 2014
Place: Birch Grove
Concert time: 10:00 to 10:30am
Depart TIS: 9:45am
Return TIS: 10:45am
Mode of Transportation: School bus
Teachers in charge: Ms. Rebekah Battersby, Mrs. Kathy Adams

(Please detach and return permission slip on next page to Ms. Battersby by Friday, March 28, 2014)

FIELD TRIP PERMISSION SLIP

Child's teacher _____

Child's name: _____ has permission to participate in the Friday, April 11, 2014 Birch Grove concert.

Our school nurse would like you to provide us with the following information. Please check one:

- () My child does not need medication for this field trip.
- () Yes, medication that is presently in the school health office must be taken on this field trip. This includes inhalers for asthma, or oral medication.
- () I give my permission for _____ (teacher) to administer _____ (medication).

I can volunteer as a chaperone for the trip (Please check one) ___ Yes ___ No

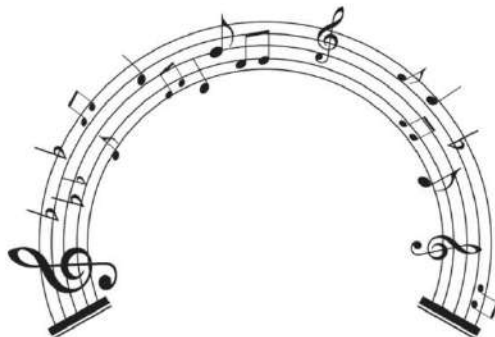
Parent/Guardian Signature _____ **Date** _____

Tolland Intermediate School

96 Old Post Road

Tolland, CT 06084

860-870-6885



MUSIC TIMES THREE SPRING CONCERT

Concert date: Wednesday, April 9, 2014

Place: Tolland Intermediate School in the All Purpose Room

Students arrive: **6:40 p.m.** and report to the Lecture Hall

Concert begins: **7pm**

Concert dress: Appropriate for a performance

Ladies: a dress or dress pants/skirt and dress shirt, nice shoes

Gentlemen: dress pants, dress shirt, nice shoes

I am looking forward to a fun-filled concert with your wonderful young musicians! Please contact me with any questions or concerns.



Tolland Public Schools

School Facility Utilization & Assessment Study Public Workshop

Number 4 of 4

THURSDAY, MARCH 27, 2014

7:00 to 8:30 p.m.

**Tolland High School Library 1
Eagle Hill, Tolland**

The Tolland Board of Education invites you to participate in the final meeting in a series of community workshops regarding the development of a facility plan for our District's schools.

The Board selected Drummey Rosane Anderson, Inc. ("DRA") to develop the School Facility Utilization & Assessment Study. In this workshop, DRA will focus on the top scenarios deemed feasible based on their research to date - including talking to staff, touring facilities, and meeting with residents. The agenda, provided below, will include an opportunity for the public to give feedback. After the workshop, DRA will craft their report of recommendations to the Tolland Board of Education. If you are interested, more background on the process is provided below.

We encourage your attendance and participation, and invite you to share your thoughts, ideas and suggestions.

Children (ages 3 and older) and school-aged children are invited to attend with their families. Age-appropriate activities will be planned.

WORKSHOP AGENDA

7:00 - 7:10	Informational Displays
7:10 - 7:15	Welcome
7:15 - 7:45	Options Presentation
7:45 - 8:15	Q+A
8:15 - 8:25	Next Steps
8:25 - 8:30	Concluding Comments

DRA has already conducted building evaluations prior to meeting with town residents at the community workshops. They have met with school staff to conduct programming and educational planning meetings. The *first* workshop focused on gathering community input. The *second* workshop served to introduce possible alternatives for our schools. The *third* workshop continued to explore possible alternatives and established key issues/concerns for considering them. This *fourth* and final workshop will shape specific recommendations for the Board of Education's consideration.

DRA's study will consider the broadest range of options and possibilities to address the needs of Tolland's school system.



THE TIS BOOK FAIR IS COMING!

Join your child for some reading fun!

Wednesday, 4/2: 8:30 – 4:00

Monday, 4/7: 8:30 – 4:00

Thursday, 4/3: 8:30 – 6:00

Tuesday, 4/8: 8:30 – 5:00

Friday, 4/4: 8:30 – 4:00

Wednesday: 4/9: 8:30 – 8:00

Thursday, 4/10: 8:30 – 3:00

Volunteers needed!

We need your help to make this fair a success.

We will be using the Volunteer Spot website again.

Keep a look out for more information about signing up for a shift!

Can't make it to the fair?

Shop our online fair at www.scholastic.com/fair

Order ONLINE March 20th - April 9th

Fiesta Spirit Day – April 8th!

Students can dress up in their favorite Fiesta-wear! Ole'!

Contacts: Jess Burney, jessburney13@comcast.net or Karen Moran, 4morans@gmail.com



NEED VOLUNTEER HOURS?

LIKE TO BE OUTSIDE ON NICE DAYS?

LIKE WATCHING SPORTS?



Come volunteer to sell concessions for Tolland Little League. No experience necessary! Just come out and support your friends and classmates while fulfilling your community service requirement.

If interested please contact

Michelle Tyler

tylermichelle@sbcglobal.net

Cell – 860-992-6775 (Yes you can text me!)

SAVE THE DATE!

SPRING FLING 2014

Sponsored by Tolland Elementary PTO

Saturday June 7th, 10am - 2pm

Tolland Intermediate School

Rain or Shine!

TWO Bounce Houses	Dunk Tank
Games	S.W.A.T. Truck
Tolland Fire Truck	Sand Art
Pinewood Derby Track	Book Nook
Face Painting	Penny Candy Store
Cupcake Decorating	Good Ole' Bake Sale
Frozen Fruit Bars	Raffle Baskets
Cotton Candy	

Food Tent including Hamburgers, Hot dogs, Popcorn & Pretzels

“Like” us on Facebook for updates too!



Childhood: a journey not a race.

Open House

*Visit the classroom, meet the teacher,
and find out about the program.*

Wednesday, March 26, 2014

6:00 PM - 7:30 PM

45 Tolland Green

Tolland, CT 06084

Located in the building behind the Congregational Church.

TCPS offers programs for children turning 3 or 4 by December 31; as well as a 4-day program for children who would benefit from another year of growth and learning before kindergarten.

As a cooperative, the preschool offers parents the opportunity to participate in their child's early education with an experienced early childhood educator who has earned the respect and admiration of current families and alumni.

www.tollandcooppreschool.com

860-872-8883



Inside Special Education

A newsletter published regularly by Directors of Special Education in Tolland, Mansfield and Willington, with the goal of providing direction, guidance, information and support to parents and families of students with special education needs.

The Annual Review

At least annually, the Planning and Placement Team (PPT) must meet to discuss each identified special education student's progress with regard to their respective Individual Education Plan (IEP) goals/objectives. The specific goals/objectives were written based on current performance levels from the prior year with consideration given to how a student will extend their skill levels. The goal is for the student to receive educational benefit from the specialized instruction provided during the course of the school year. A mastery level is identified for each goal and objective. Achievement of such focuses how the student did benefit from the provided instruction. During the annual review meeting the special and regular education teachers, and support services personnel explain progress made given data collected over time. The PPT will then consider the next appropriate goals/objectives. In preparation for this meeting the team members who provide identified services attend the PPT with draft current performance levels, goals/objectives and accommodations/modifications for the new IEP based on the data regarding student achievement. The new IEP can begin anytime during the year, but may often be written for the start of a new school year, whichever decision the PPT indicates is appropriate for the particular student.

Extended School Year Services

During any PPT meeting, but in particular the annual review, the team must also consider whether a student requires Extended School Year (ESY) services. When considering ESY, the team must determine whether a student will regress or fail to recover learned skills within a reasonable time frame (no more than 4-6 weeks) upon return to school late summer. The skill areas that the team must review and consider are those where the student receives services and can include the following domains: academic, behavior, social communication, speech, fine and gross motor. During the summer there are different levels of programming, usually occurring over a month's time, and based on the identified student's needs. This programming can range from remedial academic instruction a few mornings a week to a four day per week morning program that includes academics, related services, adaptive and independent living skill maintenance. Ultimately, the goal of summer school is skill preservation,

but forward progression is not discouraged. Most identified special education students do not require summer services because skill maintenance is not at question. As a parent, your input will always be considered by the school team when a decision is made regarding the need for ESY services. As always, this will be made on an individual student basis.

What is School-Based Occupational Therapy?

Students with disabilities have been able to receive occupational therapy at school since the 1975 passage of the Individuals with Disabilities Education Act (IDEA). The law stipulates that if a student with a disability requires occupational therapy to perform certain tasks necessary for participation or learning, schools must provide it. The main purpose of school-based occupational therapy is to ensure that a student can participate in specific activities that make up daily life. In school, these activities may include paying attention in class, holding a pencil, book or eating utensil in the most effective way, or handwriting because these activities are key 'occupations' that students must master to succeed in school.

Occupational therapists are health professionals who use focused activity to facilitate a child's active participation in these types of self-maintenance, academic and play activities that occur in the school environment. Specific direct and indirect services that the occupational therapist may use include observing students engaging in school activities and providing strategies to facilitate the student's full participation; reducing barriers that limit student participation within the school environment; offering sensory integration strategies that facilitate student engagement; teaching the use of assistive technology to support student success; supporting the needs of students with significant challenges such as navigating the physical environment; helping to plan relevant instructional activities for ongoing implementation in the classroom, and assisting students in preparing for successful transition into appropriate post-high school employment, independent living, and/or further education. If a school team makes the decision that a student requires occupational therapy in a Planning and Placement Team meeting, the occupational therapist recommends specific goals and therapy hours to be included in the student's Individual Education

Plan. Ongoing collaboration with parents, teachers and other educational staff to help implement a child's special education program is an important ingredient for a student's school success.

Dear Ide A

(ctdearidecolumn@gmail.com)



Dear Ide,

My child's pediatrician just diagnosed him with ADHD. I don't think I want him on medication but I just don't know. Should I ask his teacher what she thinks? Mom

Dear Mom,

Teachers cannot diagnose ADHD or offer their opinion regarding treatment. Doctors may recommend using medications as one part of the treatment. I suggest you learn as much as you can about ADHD and the various treatment options and return to the pediatrician with specific questions to help you make this decision. Resources you can access to help you prepare include: www.chadd.org or <http://school.familyeducation.com/learning-disabilities/add-and-adhd/34474.html>

Definition of the term Learning Disabilities

This will be the first in a series of articles that will define the 13 special education categories found on the IEP. We will look at Learning Disabilities this month.

IDEA 2004 defines a specific learning disability (SLD) as:

A disorder in one or more of the basic psychological processes involved in understanding or in using language, spoken or written, that may manifest itself in the imperfect ability to listen, think, speak, read, write, spell, or do mathematical calculations, including conditions such as perceptual disabilities, brain injury, minimal brain dysfunction, dyslexia, and developmental aphasia. Specific learning disability does not include learning problems that are primarily the result of visual, hearing, or motor disabilities, of intellectual disability, of emotional disturbance, or of environmental, cultural, or economic disadvantage.

For a student to be identified as having a specific learning disability and to be eligible for special education under IDEA 2004, the following criteria must be met:

- The child does not achieve adequately for the child's age or meet state-approved, grade-level standards in one or more of the following areas: oral expression, listening comprehension, written expression, basic reading skills, reading fluency skills, reading comprehension, mathematics calculations, or mathematics problem solving.
- The child does not make sufficient progress to meet age or state-approved, grade-level standards in oral expression, listening comprehension, written expression, basic reading skills, reading fluency skills, reading comprehension, mathematics calculations, or mathematics problem solving when using a process based on the child's response to scientific research-based intervention.
- The child has been provided with explicit and systematic instruction in the essential components of scientific research-based reading instruction or math from a qualified teacher, including documentation of regular assessments of achievement.
- The child's learning difficulties are not primarily the result of a visual, hearing, or motor disability; an intellectual disability; emotional disturbance; cultural factors; or environmental or economic disadvantage, or limited English proficiency
- The disability must adversely affect the child's educational performance and, as a result, the child requires special education to address her or his unique educational needs.

A major change has taken place (in 2009) when identifying a student with a specific learning disability which involves adding the requirement to document a student's inadequate response to scientific research-based intervention and the elimination of the requirements of a severe IQ-achievement discrepancy and documentation of a severe processing disorder.

LINKS:

[Success SEPTO
Bureau of Special Education](#)

[CT State Department of Education](#)

[Connecticut Parent Advocacy Center](#)

[Autism Society of America](#)

[State Education Resource Center](#)

[Connecticut Birth to Three](#)

Come Grow With Us



The Tolland Youth Garden
A Project of Tolland Garden Paths

2014 SPRING PROGRAMS

Unique Learning Opportunities
for children and teens to
discover the Joys and benefits of gardening.

THE MAGICAL SEED

Seed starting fun for ages 5 – 10
Saturday, April 12 10:30 – 11:30 a.m.
at the Tolland Library

We'll explore garden magic where it begins - with seeds and soil. Learn how to make potting soil and seed starting pots. Pick from a variety of seeds to plant. Take your

seedling home and watch it grow! Instructor: Kurt Werner, CT Master Gardener Program

GARDEN STEWARDS TRAINING

For Middle and High School Youth
Saturday, April 19 1 – 3 p.m.
At the Tolland Library Fee \$10
No fee for returning Stewards.

An opportunity for youth to be part of a leadership team with adults to help children experience the joys and benefits of gardening in TYG Programs. Stewards are eligible to earn certification as Junior Master Gardeners. Instructors: Sandie Benjamin, Cathy Wilcox & returning TYG Stewards.



2013 TYG Garden Stewards with campers
Photo by Kyle Ferguson, TYG Steward & Photographer

TYG FAIRY & WIZARDS FESTIVAL

Ages: 3 – 8 (with adult/s) 9 and up
Saturday June 7 10 – noon

We'll begin with storytelling, face painting, and crafts at Crandall Pavilion, then journey through the enchanted forest to the Youth Garden to learn to build a fairy house from gathered materials. Fairy and Wizard costume attire welcome. For more information please call Christine at 860 870-8324 or tgpyouthgarden@comcast.net

**For program registration information, please
call Tolland Recreation Dept. 860-871-3610**

VISIT THE TOLLAND YOUTH GARDEN

Located in Crandall Park, Cider Mill RD, Tolland, along the paved walk north of Lions Club Ball Field. Look for our happy garden sprout logo and our rainbow fence!

**Find Youth Garden News on the
Tolland Garden Paths Website**

Friend us on our Facebook Page:

Tolland Youth Garden

**To volunteer, to schedule a program, birthday party or garden visit, to make a tax deductible donation or to ask for information, please contact Sandie
860-872-4830 tgpyouthgarden@comcast.net Watch for news about
Summer and Fall Programs**

 **Free Dental Care!** 

XL Center
1 Civic Center Plaza
Hartford, CT 06120

April 25-26, 2014

CONNECTICUT
MISSION of MERCY
Free Dental Clinic



Caring for One Another

No Eligibility or Income Requirements

**No Appointments – First come, First Served
Children and Adults**

Services Include:

- Cleanings
- Extractions
- Fillings
- Fluoride Treatments
- Interim Partial Dentures (Limited)
- Root Canals (Limited)
- X-rays

**Doors Open at
6:00 AM**

For more information: Visit our website www.cfdo.org



A Project of the Connecticut Foundation for Dental Outreach

**1 hr.
Jumping
\$14**

**2 hr.
Jumping
\$24**

To Benefit:



Monday, April 14, 2014

4 pm – 8 pm

At

Launch Trampoline Park

91 Brainard Rd., Hartford, CT, 06114

(860) 246-5867

If you have any questions please contact

Kate Tellers @ (860) 268-4554

Jumpers MUST present this flyer at time of purchase.

Jump, Eat, Play, & DONATE!!!





Spring 2014 RECREATION Soccer Registration has started

Please register online.

Early Registration ends 3/31/14. Late fees will apply after this date.


Any player eligible to play U5 – U14 is invited to participate.

If you have any questions, please direct them to Laura Krementowsk, TSC Registrar at ljkrementowski@yahoo.com

Please visit our website www.tollandsoccer.com



The End

Twitter –  Keep up with some of the fun we have at T.I.S. by following us on **Twitter** @TISNews