



**KINDERGARTEN IN BELMONT PUBLIC SCHOOLS**

**Welcome Class of 2032 to Kindergarten Information Night**

**January 24, 2019**

**[www.belmont.k12.ma.us](http://www.belmont.k12.ma.us)**

# Agenda

- **Introduction by Superintendent John Phelan**
- **Belmont Public Schools**
- **Kindergarten in Belmont**
- **Kindergarten Registration Timeline**
- **School Assignments**
- **Kindergarten Intake Day**
- **Health Requirements**
- **Food Services**
- **Transportation**
- **After School Care**
- **Questions**

# Kindergarten Information Night Panel

- **John Phelan**  
*Superintendent of Schools*
- **Janice Darias**  
*Assistant Superintendent of Schools*
- **Anthony DiCologero**  
*Director of Finance, Business and Operations*
- **Tricia Clifford**  
*Burbank School Principal*
- **Danielle Betancourt**  
*Butler School Principal*
- **Stephen Lambert**  
*Interim Wellington School Principal*
- **Janet Carey**  
*Winn Brook School Principal*
- **Heather Blake and Lisa Harteveltdt**  
*School Nurses*
- **Dustin O'Brien**  
*Director of Food Services*





# Belmont Public Schools



# **Belmont Public Schools**

## **Vision Statement**

- **The Belmont Public Schools provide an innovative environment where all adults and children develop and apply the curiosity, skills, and habits of life-long learners. Our success is built on a partnership of educators, families, and community members that is committed to providing the means for Belmont’s children to create happy and successful lives**
- **All students in the Belmont Public Schools**
  - **Learn: Develop the confidence and resilience that result from exceptional effort;**
  - **Think: Authentically engage in a rigorous curriculum;**
  - **Create: Apply their learning to address important challenges;**
  - **Serve: Make a positive difference in the lives of other people**

# **Belmont Public Schools**

- **Grades Pre-K-12**
- **4,634 students enrolled as of October 1, 2018**
- **Four Elementary Schools Grades 1-4  
(Burbank, Butler, Wellington, Winn Brook)**
- **Chenery Middle School Grades 5-8**
- **Belmont High School Grades 9-12**
- **Preschool located at Wellington School**

# Belmont Public Schools by 2023

- Grades Pre-K-12
- Projection of more than 4,800 students enrolled as of 2023
- Four Elementary Schools (Burbank, Butler, Wellington, Winn Brook)
- Chenery Middle School
- Belmont Middle and High School Grades 7-12
- Preschool located at Wellington School





# Kindergarten in Belmont Public Schools





# Kindergarten in Belmont

- Full day kindergarten and half day kindergarten is available
- Full day kindergarten tuition is \$3,500
- Full day kindergarten payment opens online June 10 ([fdkpayments@belmont.k12.ma.us](mailto:fdkpayments@belmont.k12.ma.us))
- Half day kindergarten is free and ends before lunch
- Children attending half day kindergarten need to be picked up by parent/guardian as there is no bus available for half day attendance

# Age Requirements for Belmont Public Schools

- **Kindergarteners must be five years old on or before September 1 of incoming school year**
- **First graders must be six years old on or before September 1 of incoming school year**

# **Bilingualism in Belmont**

**Belmont is a town of global citizens!**

- **Many of our students experience more than one language at home**
- **Usually, just under half of a kindergarten classroom will have some experience with a language other than English**



# Bilingualism in Belmont

*Your registration paperwork will ask you about languages spoken in your home and by your child:*

- This information helps us identify which students may need screening for academic language proficiency
- Most students who are screened do not require any additional services
- The intention of the screening, which is required by state and federal law, is to ensure that all students have equal access to education

# Kindergarten Registration



# Kindergarten Information Night and Timeline for Completed Registrations

January 24, 2018	Online Registration opens for District; Kindergarten Information Night for parents/guardians
March 13, 14, 15	Kindergarten Central Registration for those with Completed Registration Materials (by appt. only)
April 5	Deadline to complete student registration for first round of school placements; notification by April 16
April	Kindergarten Information Night for parents/guardians of placed students at placed school ( <i>adults only, please</i> )
May 2, 3	Kindergarten Intake Days for placed students at placed school (by appt. only)
June	Second round of school assignments for those whose registration was not completed and were not placed in April
August	Third round of school assignments for those whose registration was not completed and were not placed in June



# January

- **Kindergarten Information Night on January 24**
- **Registration for District Opens Online on the evening of January 24**
- **Once you register online, you will be sent a link to a Home Language and a Parent Information Form to be completed online**
- **Once those are completed, you will be given a link to choose a Registration Appointment for March Kindergarten Central Registration**

# March

- **Central Registration Appointment Days are scheduled for March 13, 14, and 15 in the Chenery Middle School Community Room (*you do not need to bring your child to this appointment*)**
- **Bring completed health and residency forms and accompanying documents listed on the registration page on the BPS website**
- **Each appointment will last approximately 10 minutes**
- **Parents/guardians will meet with an administrative assistant and a school nurse**

# Registration Checklist

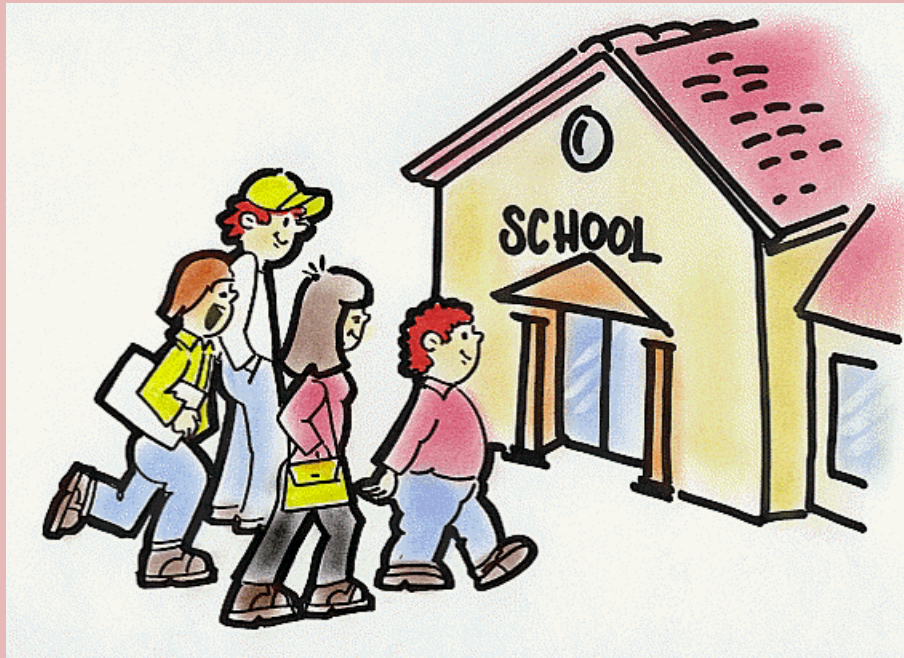
Please bring the following documents with you to your registration appointment:

- ✓ Student Birth Certificate
- ✓ Parent/Guardian Photo ID
- ✓ Proof of Residency (as outlined in the Registration pages on the BPS website) *\*Note: The Town is sending the census form to homes January 19. Please do not mail back; hand-carry the signed census form to the Town Clerk's Office with other residency items required beginning end of January*
- ✓ Student Health History Form
- ✓ Health/Immunization Forms with Recent Physical Examination (must be current)

Please show original/up-to-date documentation of the items listed above.



# School Assignment



# School Assignment Timeline

- **Students whose registration is completed by April 5, 2018 will be the first round of assignments**
- **Students whose registration is completed by May 23 will be the second round of assignments placed by June 1**
- **Students whose registration is complete by August 9 will be the third round of assignments placed by August 16**
- **Students whose registration is completed after the third round of assignments are placed in an ongoing process**

# School Assignment Process

*The District will assign children based on the Elementary Student Assignment Plan regarding class size and enrollment numbers*

- **Students are assigned to their “neighborhood” school whenever possible.**
- **Siblings are placed in same school as current students attending Belmont Public Schools**
- **New families with siblings are placed in the same school**
- **Families are placed in school with consideration given to home/school proximity**
- **Placement is not determined on a first-come, first-serve basis**

# Kindergarten Intake Day





# Kindergarten Intake Day

Kindergarten Intake Day (with parent) held in May is a brief check of all kindergarten children in the areas of:

*Personal and social development*

*Speech and language skills*

*Eye/hand coordination*

*Small and large muscle control*

*Hearing and vision*

# Health Requirements and Information



# **Immunization Requirements and Up to Date Physical Exam with Vision**

- **DTaP - 5 Doses**
- **Polio - 4 Doses**
- **Hepatitis B - 3 Doses**
- **MMR (Measles, Mumps, Rubella) - 2 Doses**
- **Varicella - 2 Doses or MD documented history of disease**
- **Blood Lead level**
- **Up to date physical exam (within past 12 months)**
- **Vision screening within past 12 months (including Stereopsis)**

# Important Health Information

Share pertinent medical information – contact your school nurse;

- Allergies
- Asthma
- Diabetes
- Seizure Disorders
- Daily Medications, at home or school

(Applicable forms for medications given during school are available online)

- Other medical concerns, illnesses, surgeries

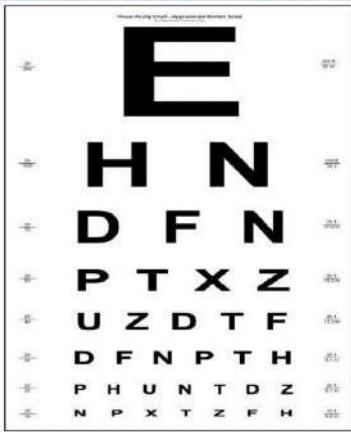




# Important Health Information



- **Provide up-to-date emergency contact phone numbers**
- **Have a plan for when student needs to be dismissed due to illness or injury**
- **Send an extra set of seasonally appropriate clothes (especially socks, sweatpants, and underwear)**
- **Keep your child home when he or she is sick - Refer to District Health Care Policy**

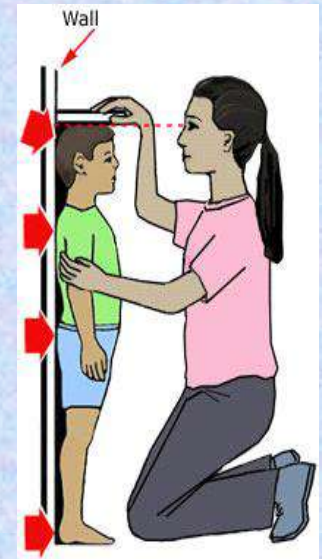


# State Mandates

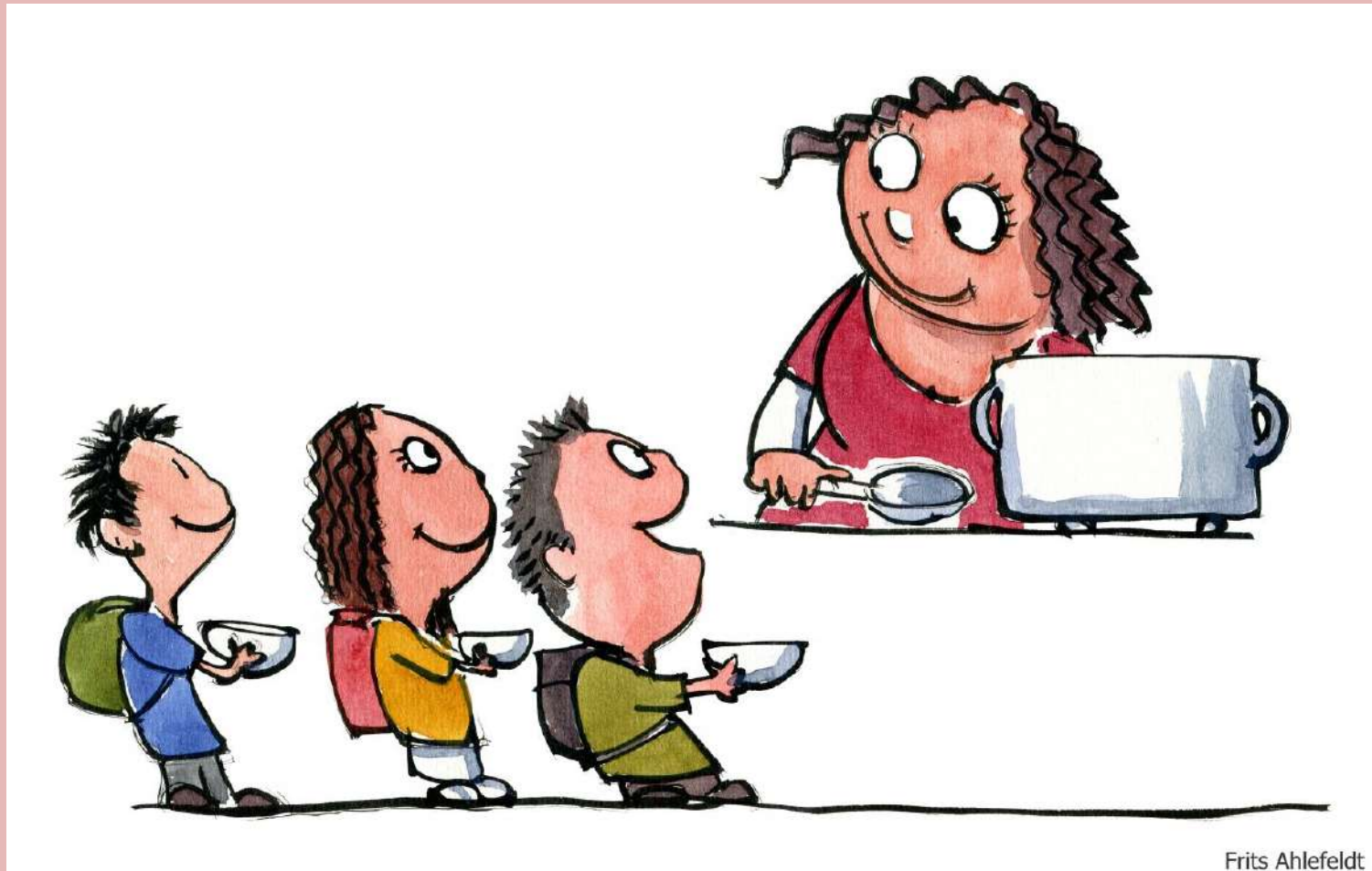


**Kindergarten vision screening (plus stereopsis) through primary care physician or optometrist or ophthalmologist**

- **Vision screening grades 1-4 completed by nurse**
- **Hearing screening grades K-3 completed by nurse**
- **BMI (Body Mass Index) in grades 1 and 4**



# Food Services



# Quick Guide to School Meals

## \* Meal Prices

- \* Breakfast available at Wellington and Butler only

	Reduced	Full Paid
Breakfast	\$.30	\$1.75
Lunch	\$.40	\$2.75

## \* Free and Reduced Applications

- \* Apply online or hard copy
- \* [www.heartlandapps.com](http://www.heartlandapps.com)



## \* Online Payments

- \* Cash or check accepted as well
- \* Payments to “Belmont School Lunch”
- \* [www.myschoolbucks.com](http://www.myschoolbucks.com)





# Sample Lunch Option at Elementary Level



# School Meals News



## Allergen and Dietary Restrictions

### Daily Allergen Boards in Schools

## Eating Local

We partner with local vendors such as Walden Meats, Iggy's Bread, and Nick's Pizza

## Going Green

Compostable trays and containers  
Eco-Friendly utensils coming soon...

Menus and other news at....

<http://www.belmont.k12.ma.us/bps/Home/Food-Services>

Have any questions?

Food Service Director Dustin O'Brien

Office: 617-993-5875

Email: [dobrien@belmont.k12.ma.us](mailto:dobrien@belmont.k12.ma.us)

# Transportation Policy



# Transportation

## *Distance, Availability, & Protocols*

- Per MGL, transportation is provided for all students in grades K-6, living two or more miles from their assigned school
- Busing is not available in all areas of Belmont for students living less than two miles from their assigned school; for availability, please inquire at:  
[busing@belmont.k12.ma.us](mailto:busing@belmont.k12.ma.us)
- Students in grades K-2 must be met at the bus stop by an adult
- There are central bus stops for bus routes, which are listed at:  
<http://www.belmont.k12.ma.us/bps/bus-faq>

## *Payment & Registration*

- Online registration opens in June
- There is an annual fee for busing of \$575.00 per student
- Partial or full fee waivers are available based on household size and income
- Students in grades K-6 who live two miles or more from their assigned school are transported without a fee per MGL



# After School Care



# After-School Program

The after-school program is run by four independently run groups at Belmont Public Schools:

- Belmont After School Enrichment Collaborative (BASEC) for Burbank and Chenery  
*[www.belmontbasec.org](http://www.belmontbasec.org)*
- Butler Extended Day Program (BEDP)  
*[www.bedp.org](http://www.bedp.org)*
- Wellington Student Care Program  
*[www.wellingtonstudentcare.com](http://www.wellingtonstudentcare.com)*
- Winn Brook Schools for Children  
*[www.schoolsforchildreninc.org](http://www.schoolsforchildreninc.org)*

# Belmont Elementary Schools

***Burbank*** – 266 School Street - 617-993-5500

***Butler*** – 90 White Street - 617-993-5550

***Wellington*** – 121 Orchard Street - 617-993-5600

***Winn Brook*** – 97 Waterhouse Road - 617-993-5700

- ***School Hours for Burbank, Butler, and Wellington*** are 8:40 am to 2:50 pm; Wednesdays release at 1:40pm; Early Release days at 11:40 am – Half day kindergarten 8:40 am to 11:55 am
- ***School Hours for Winn Brook*** are 8:50 am to 3:00 pm; Wednesdays release at 1:50 pm; Early Release days at 11:50 am – Half day kindergarten 8:50 am to 12:05 pm

# Questions?

