

# **BES The Return**

**Kindergarten Open House  
2020-2021**

# Welcome, Dr. Askew

<https://drive.google.com/file/d/1JXySBdOXGmDEQ-DNlobKYLqDrhNH1C3F/view?usp=sharing>

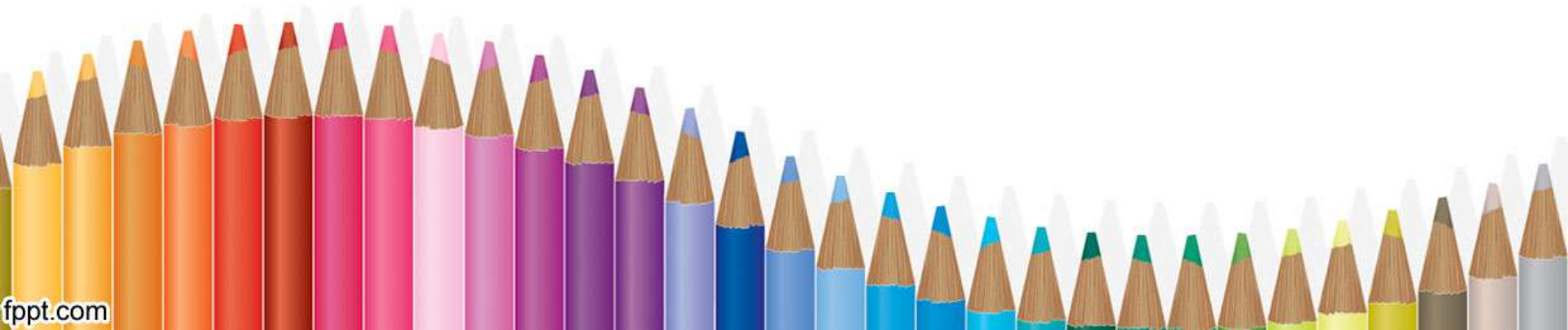


BETHLEHEM  
ELEMENTARY SCHOOL



# Welcome, Mrs. Ginther

- <https://drive.google.com/file/d/1tTzrHE1IQIHWgo1QVwgkIgUE7VZmj3VA/view>

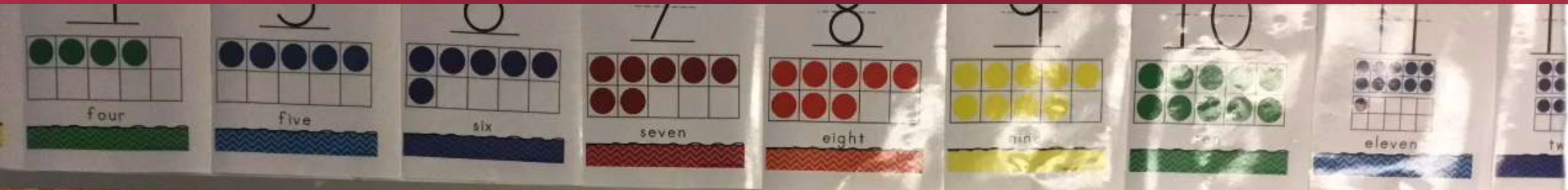




# Mrs. Anderson



# Mrs. Humphrey

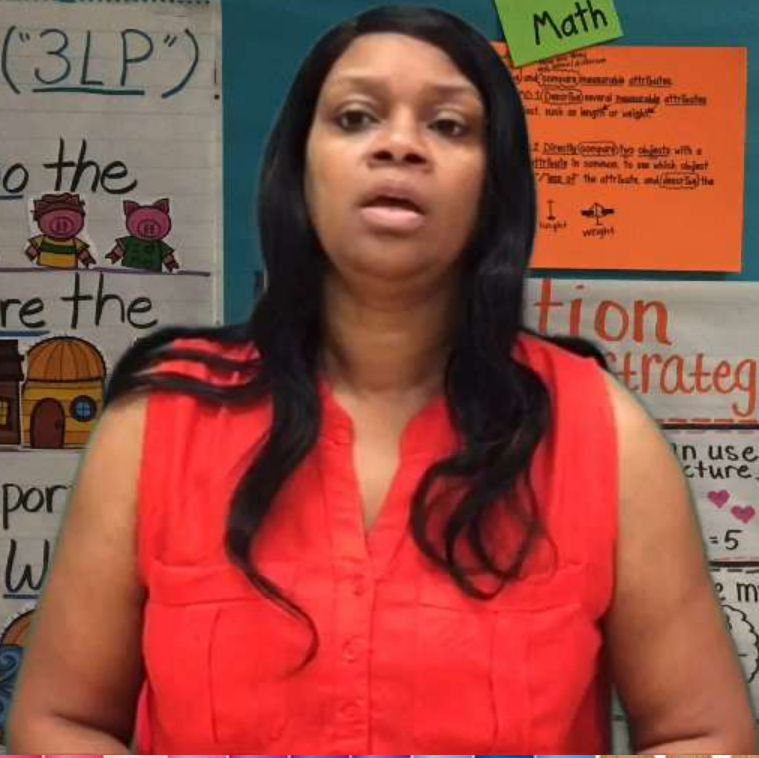


Story Elements ("3LP")

Characters-are who the story is about.

Settings-are where the story happens.

Main Events-The important things that happen. What happened?



Math

1. Compare measurable attributes (length, weight, etc.) of two objects.

2. Directly compare two objects with a attribute in common, to see which object has "more of" the attribute and/or "less of" the attribute.

tion strategies

Parts of an <sup>(Ar.)</sup> Number Sentence

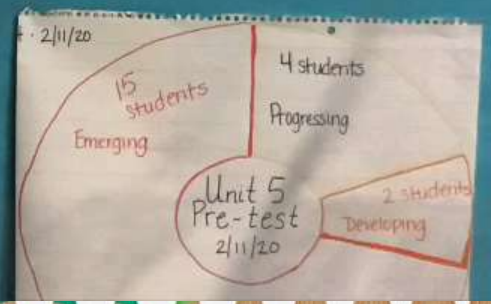
Addend plus Addend Equals Total

$$\boxed{2} + \boxed{3} = \boxed{5}$$

Minuend Subtrahend Difference

$$\boxed{8} - \boxed{3} = \boxed{5}$$

Examples

$$2 - 4 = 2$$
$$5 - 6 = 1$$
$$5 + 3 = 8$$
$$80 + 20 =$$
$$60 - 30 = 30$$
$$1000 + 1000 = 2000$$


# Henry County Strategic Priorities

## *Unify~Strengthen~Ensure*

- Unify Henry County around excellence in public education
- Strengthen our core business of student learning
- Ensure a high performing environment for all students

**#Expect** *Exceptional*



# Rigor, Relevance, Relationships

- **Rigor**

- Describes instruction, schoolwork, learning experiences, and **educational** expectations that are academically, intellectually, and personally challenging.

- **Relevance**

- Learning experiences that are either directly applicable to the personal aspirations, interests, or cultural experiences of students (personal **relevance**) or that are connected in some way to real-world issues, problems, and contexts.

- **Relationships**

- The **relationships** formed between **student** and **teacher** plays a large role in the trajectory of a child's academic success and social development.

**#Expect** *Exceptional*

# Henry Teaching and Learning Standards

- HTLS is provided on the Henry County Schools website
- [https://schoolwires.henry.k12.ga.us/cms/lib/GA01000549/Centricity/Domain/5962/Kindergarten\\_HTLS\\_PRINT.pdf](https://schoolwires.henry.k12.ga.us/cms/lib/GA01000549/Centricity/Domain/5962/Kindergarten_HTLS_PRINT.pdf)

**#Expect***Exceptional*





# Attendance/ Tardiness

- Students must be in the classroom by 7:45 am each day.
- Attendance will be taken daily at 7:45 am
- If you are tardy to class, a note will be sent to Administration. If your student is absent from class, you will need to submit a note to an Administrator and/or the Attendance Administrator.
- Please reference the Henry County School Handbook for Parents and Students for the Attendance Policy.

**#Expect***Exceptional*



# Behavior

- Bethlehem Elementary will use ClassDojo in conjunction with virtual Bobcat Bucks to encourage Positive Behavior.
- Second Step is our newest resource teaching students the Skills for Learning, Self-Awareness, Social Awareness, Self-Management and Relationship Skills.
- Students are expected to follow the Henry County Schools Handbook.
- Students are also expected to adhere to the Kindergarten Schedule and Google Meet rules.

**#Expect** *Exceptional*

# Kindergarten Online Expectations

- Dress for school.
- Have a designated work area, free from distractions.
- Know and follow your schedule.
- Ask questions by raising your hand and wait your turn.
- Always be prepared to learn.

**#Expect***Exceptional*

# Curriculum

- Bethlehem uses the Open Court Phonics Program for Kindergarten to teach your child phonics skills for reading. Each child is tested every 13<sup>th</sup> day after a Unit Lesson has been completed.
- The HMH Math, Social Studies and Science Resource materials have also been adopted as a source of instruction along with the Henry County Unit Plans of Instruction.

**#Expect***Exceptional*



# Curriculum Continued

- Each subject area follows the Henry County Unit Plans of Instruction which are aligned with the Henry County Teaching and Learning Standards.
- Bethlehem also follows a Personalized learning model that is based on each child's learning needs in a virtual environment. To ensure each child's goals are achieved.

**#Expect***Exceptional*

# Lesson Plans

- Lesson plans will be accessible on the Bethlehem website under my name in the Faculty/Staff section.
- Look under the Virtual Learning Tab to pull up the lesson plan.



# Accessing Classwork

- The Platform used to access your students work will be Google Classroom which has already been downloaded on your child's devices through Classlink.
- The Classlink and Google Classroom login information has been provided with the resources materials you received.



# Homework

- Monthly Newsletter
- Read 20 minutes daily.
- Study sight words daily, sight word lists have been provided.
- Any additional assignments-please complete at the teacher's request.
- These assignments will be posted in Google Classroom.

**#Expect** *Exceptional*



# Grading System

- GKIDS 2.0 Readiness Check will be utilized at the beginning of the school year for Kindergarten.
- Students will began receiving numerical grades after the first nine weeks of school.
- The grades will be inputted in Infinite Campus. You will have to retrieve your login information from the front office.
- Once you obtain your login information you will be able to access your child's grades.

**#Expect** *Exceptional*

# Additional Grading System Info.

- 60% of your child's grades will come from practice work and homework.
- The remaining 40% will come from Assessments.
- Please make sure that all work is turned in, so that your child's grades will be accurate according to the grading system.

**#Expect** *Exceptional*



# Field Trip Information

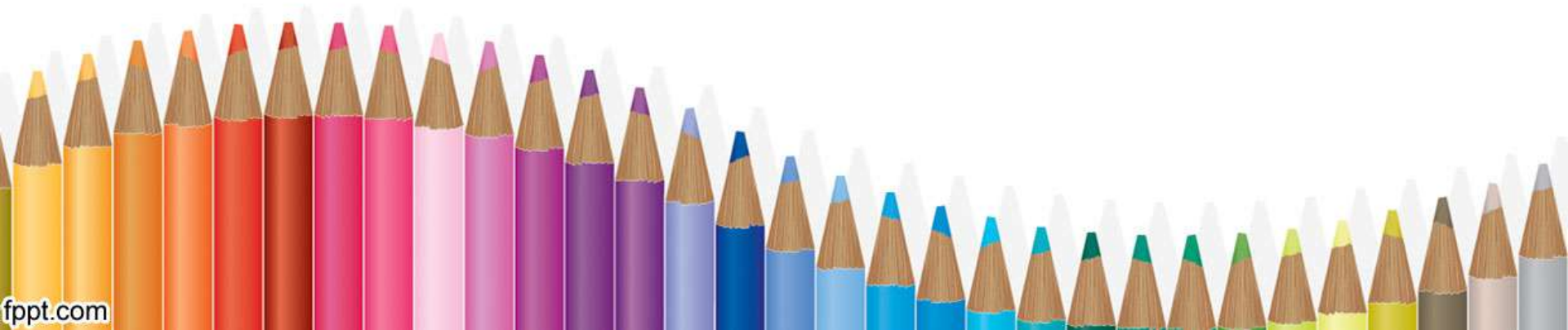
- We will have opportunities for your child to go on virtual field trips during virtual learning.
- Virtual field trips are an integral part of the Henry County Schools learning process.

**#Expect***Exceptional*



# Q & A

- Question and Answer Time
  - Responding to questions in the Chat Box





# Reminders

- Be on time and dress for school.
- Have a designated work area free from distractions.
- Be ready to learn and have fun!

**#Expect***Exceptional*



# Contact Information

- Please make sure that we have your most current phone number and email addresses, so that you can be provided with the most updated information concerning our classroom.
- Send this information to my email address:  
[Laurie.Anderson@henry.k12.ga.us](mailto:Laurie.Anderson@henry.k12.ga.us)

**#Expect** *Exceptional*

# Final Note

- Always remember, **Parental involvement** is the number one key to your child's success in the classroom and virtual learning. If **you** work together with **your child** and **their Teacher**, your child will be excited about what they are learning and will continue to keep those values from now and beyond. **No one group will be as effective without the help of another.** Thank you

Sincerely, Mrs. Anderson and Mrs. Humphrey

