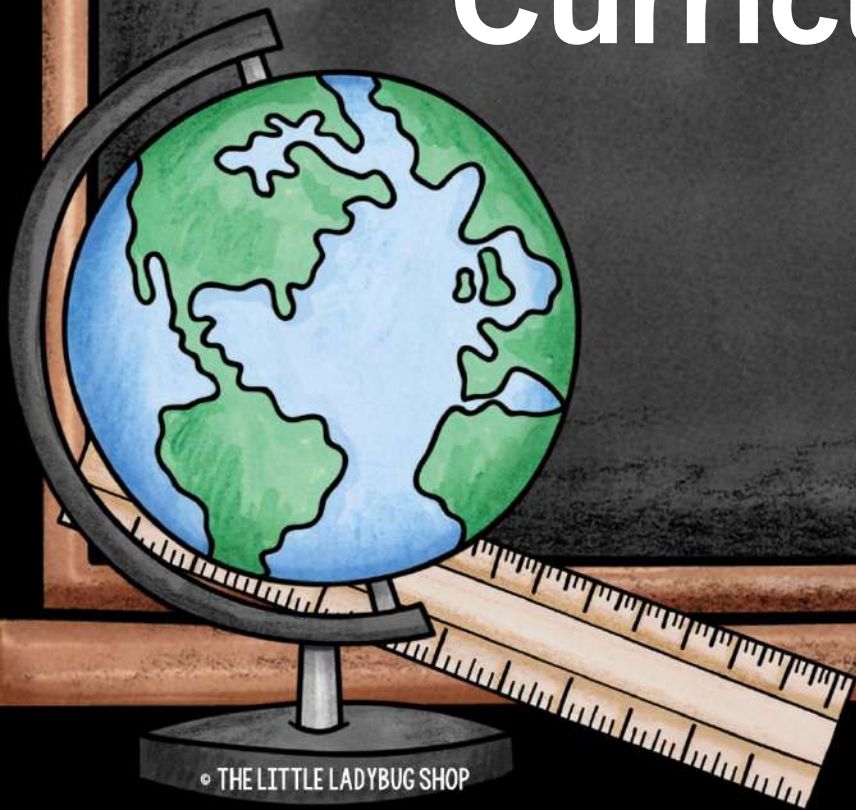
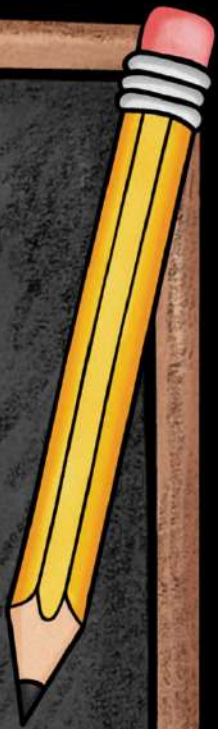


# Welcome to Kindergarten Curriculum Night



© THE LITTLE LADYBUG SHOP





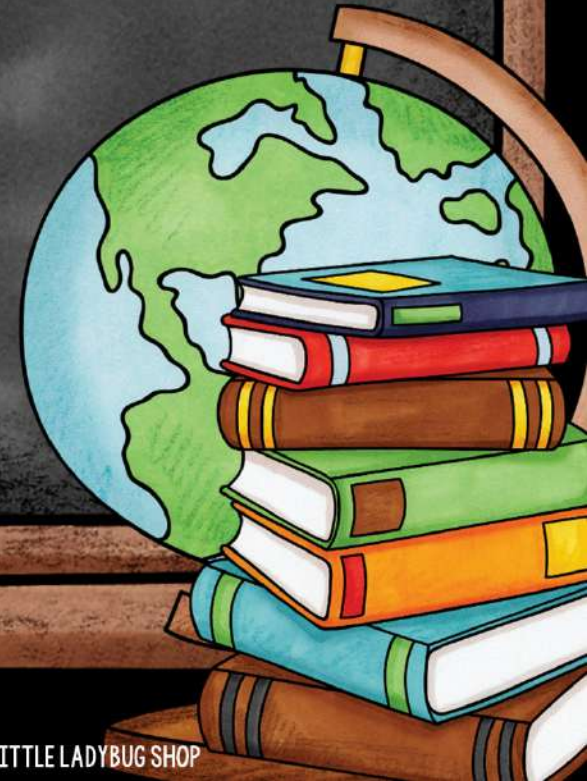
# What is Kindergarten?

## Social:

- Making new friends
- Build language skills
- Follow directions
- Share with others

## Academic:

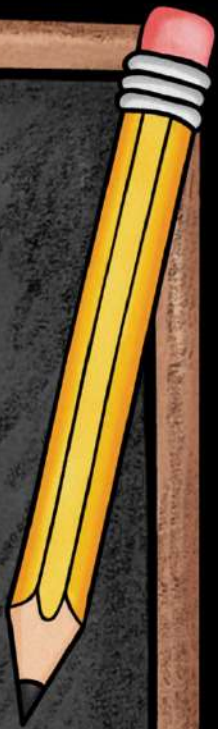
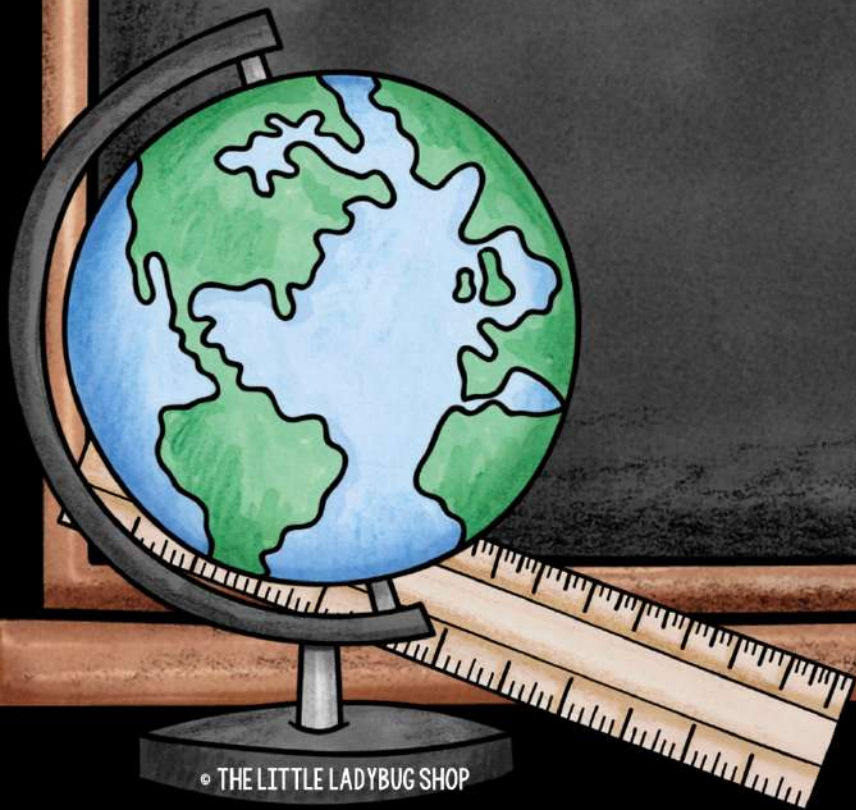
- Language Arts/Reading
- Mathematics
- Science/Social Studies





# Language Arts & Reading

- Curriculum: McGraw-Hill Wonders
  - Reading comprehension
  - Phonemic Awareness
  - Phonics
  - Writing
  - Reading Fluency
  - Vocabulary
  - Oral Language





# Types of Daily Language Arts & Reading Instruction

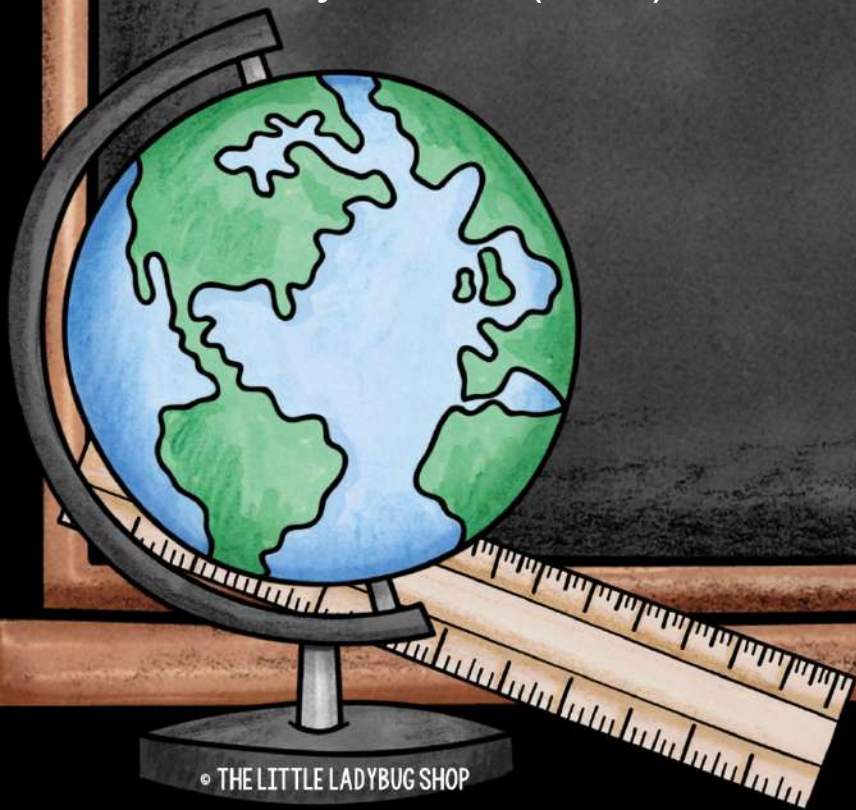
- Whole Group lessons
- Small Group lessons
- Literacy centers
- D.E.A.R. time (Drop Everything and Read)
- Reading Buddies





# Language Arts & Reading: Assessments

- Letter Recognition (Upper & Lowercase)
- Letter Sounds (31 sounds- all vowels make a short and long sound)
- Fry Words (1-50)



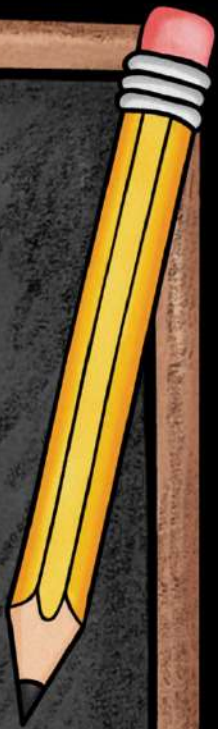


# Language Arts & Reading: Assessments Continued

- Phonemic Awareness Inventory
  - Given every 3 Times a Year (August, December/January, and May)
  - Tasks include: words in a sentence, syllables, rhyming words, onset/rime blending, Isolating Sound positions, Segmenting, Deleting, and Substituting sounds



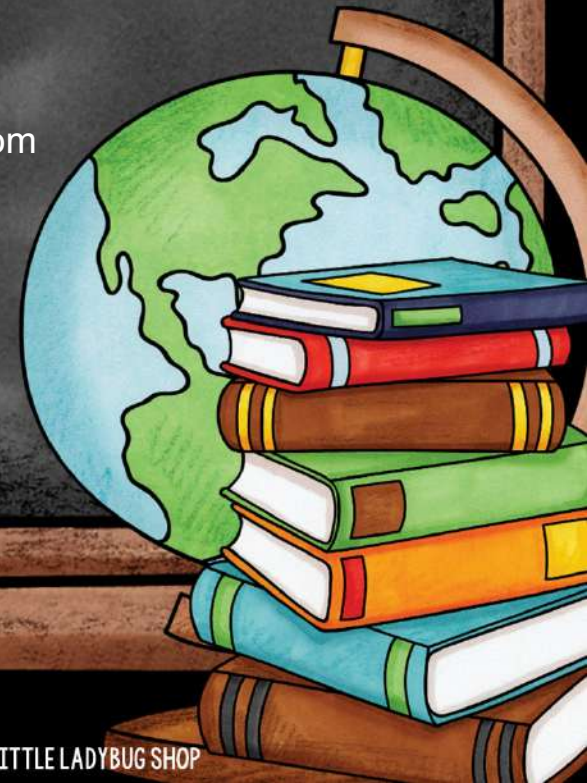
© THE LITTLE LADYBUG SHOP





# Language Arts & Reading: DIBELS 8

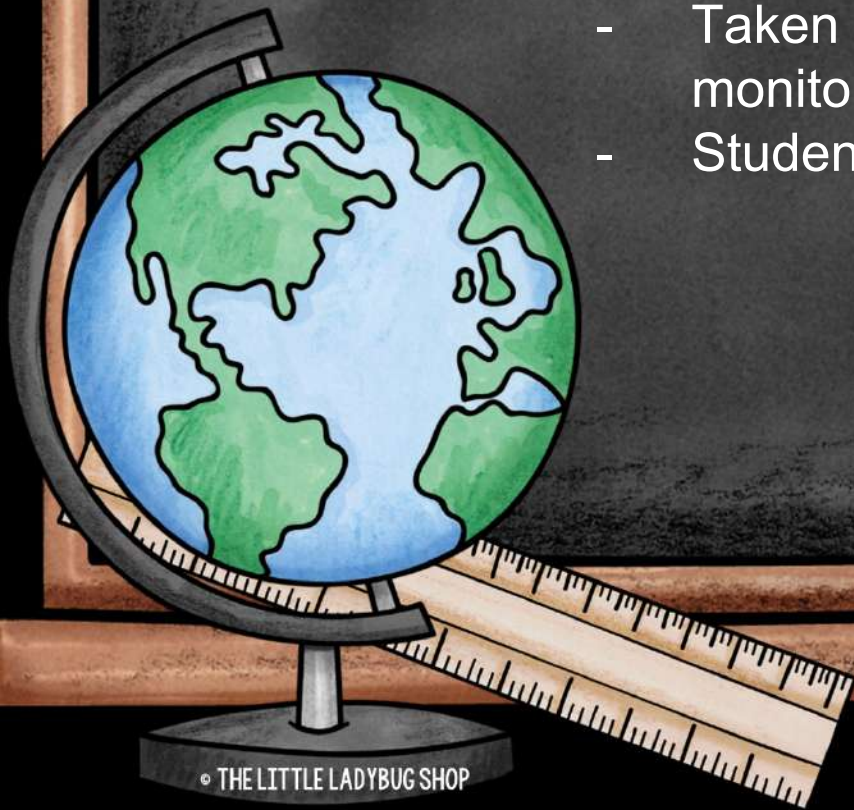
- Given three times a year, Fall, Winter, Spring
- Each subtest is timed for 1 minute
- Letter Naming Fluency (LNF): Students are presented with a page of upper- and lower-case letters arranged in a random order and are asked to name as many letters as they can.
- Phoneme Segmentation Fluency (PSF): Assesses a student's ability to segment three- and four-phoneme words into their individual phonemes.
- Nonsense Word Fluency (NWF): Tests letter-sound correspondence in which letters represent their most common sounds and of the ability to blend letters into words. (e.g., sig, rav, ov)
- Word Reading Fluency (WRF): Students read individual words aloud from a word list printed on a sheet of paper for one minute.



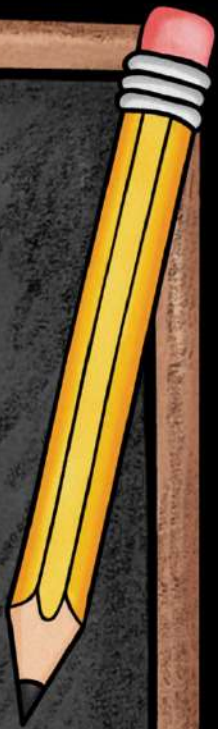


# Language Arts & Reading: Star Early Literacy

- Computer based diagnostic assessment used for determining early literacy and numeracy progress for emerging readers
  - Taken 5 times a year to monitor growth
  - Student data will be sent home



© THE LITTLE LADYBUG SHOP

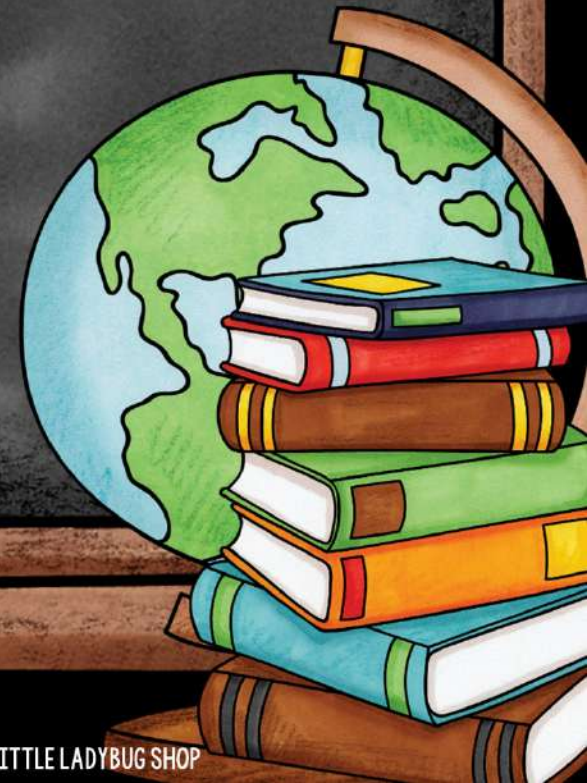




# Accelerated Reader (AR)

- Comprehension tests to assess a student's understanding of a book
- Most Kindergarten tests are 3-5 questions
- Students will begin with "hot pink" books or the lowest AR level
- Goal: 90% average on tests

\*Reading Buddies will assist students with taking quizzes until they are independent

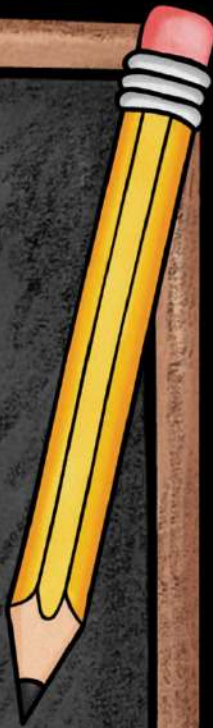




# Math Instruction

- Curriculum: Pearson EnVision
  - Counting
  - Sorting
  - Number Recognition
  - Number Sense
  - Geometry
  - Step by step problem solving

\*We use manipulatives to build concrete understanding.





# Types of Daily Math Instruction

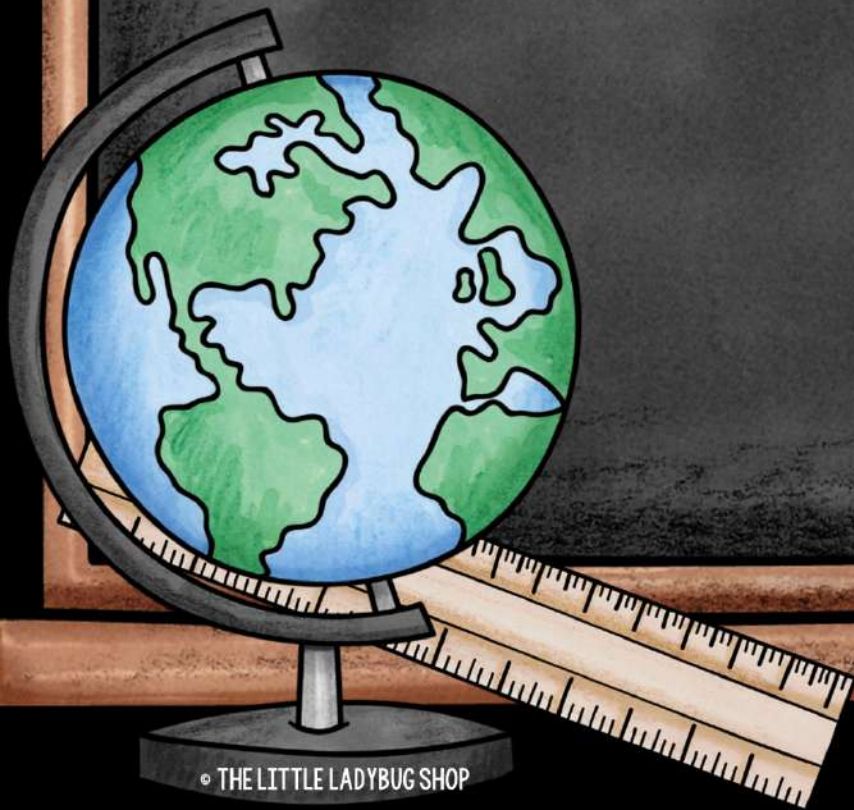
- Whole Group
- Small Group
- Math Journals
- Math Centers





# Math Assessments

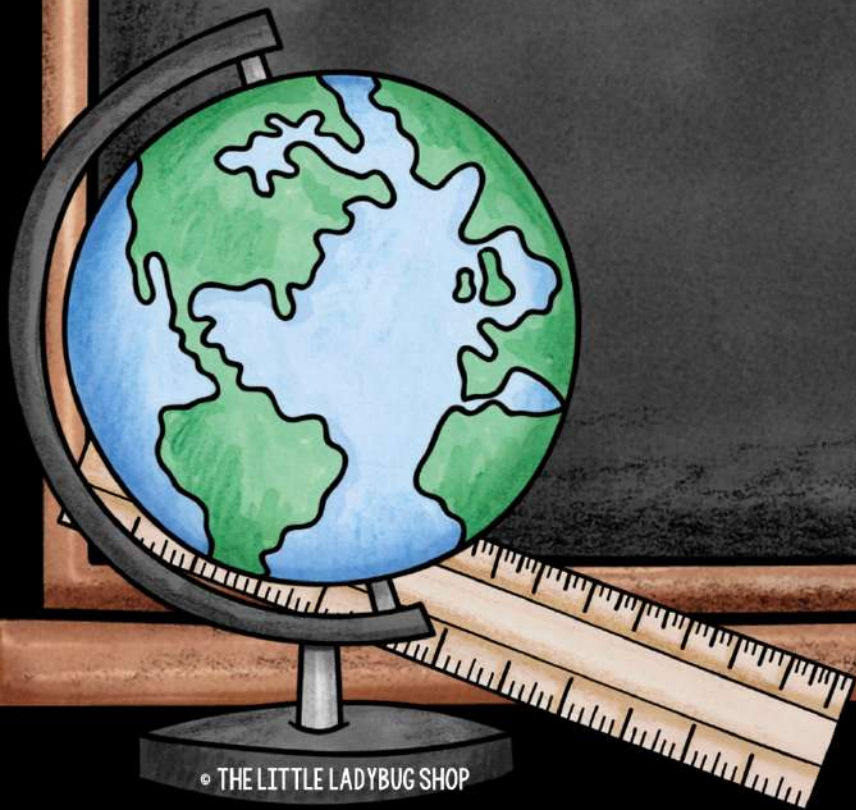
- Formal math assessment given 8 times a year for each progress report and report card (District created standards check)
- Progress is monitored throughout the year through teacher observations and other assessments



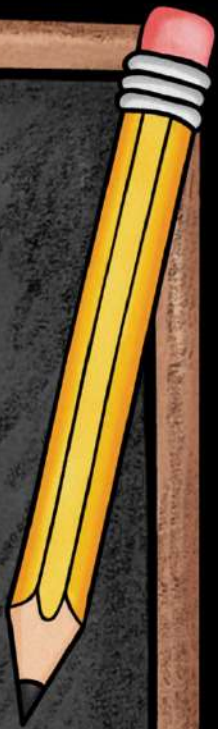


# Specials

- Art/Music once a week (Art in fall & Music in Spring)
- Library once a week
- Spanish once a week
- Counseling every other week
- Computer hour once a week via laptop carts or computer lab



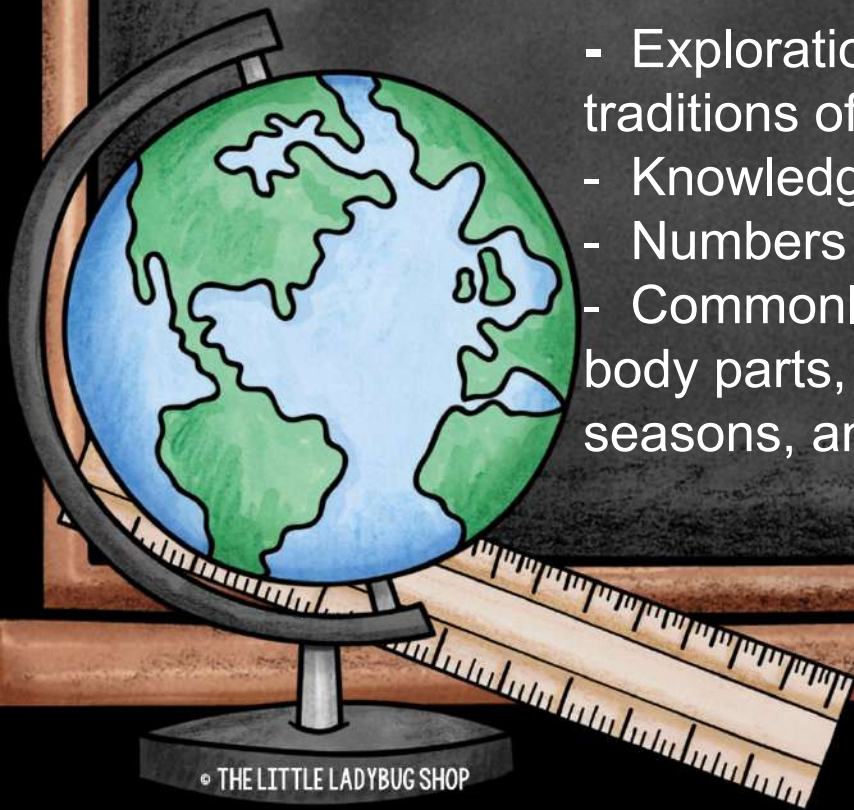
© THE LITTLE LADYBUG SHOP



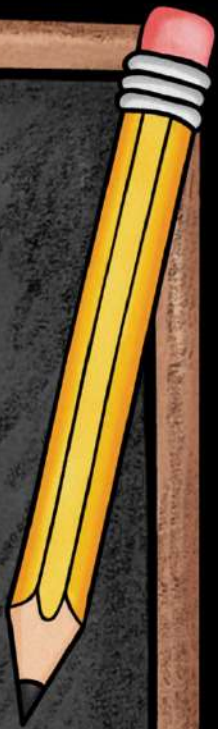


# Spanish

- Engaging and meaningful classroom experiences putting students on the path to proficiency
- For all students K-4<sup>th</sup>
- Gestures, motions, and pictures to make sure language is comprehensible to students
- Exploration of the culture and the traditions of Mexico
- Knowledge of basic greetings
- Numbers 1-10
- Commonly used vocabulary (colors, body parts, family, clothing, weather, seasons, animals, family, and food)



© THE LITTLE LADYBUG SHOP

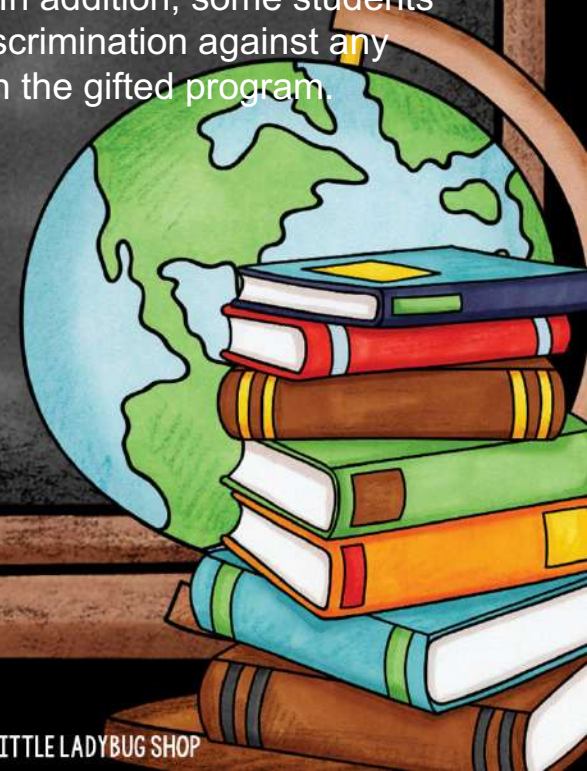




# Gifted Services in Madison City Schools

## Definition of Gifted:

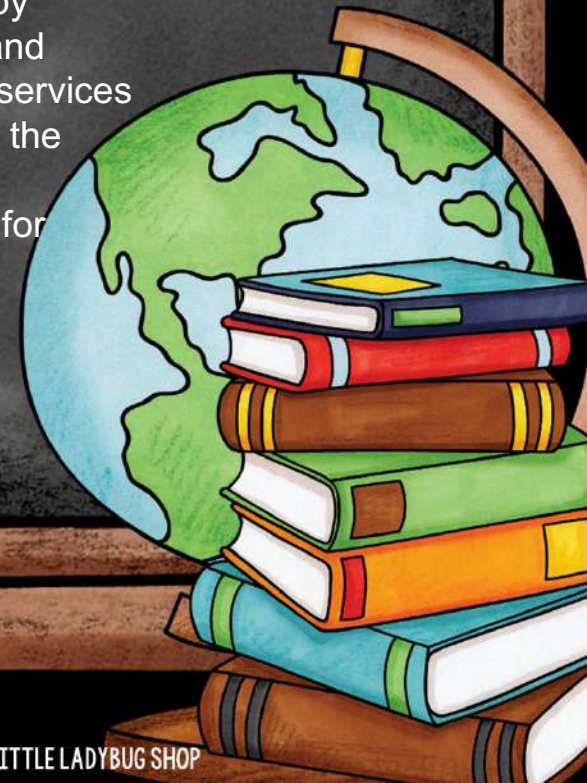
Intellectually gifted children and youth are those who perform or who have demonstrated the potential to perform at high levels in academic or creative fields when compared with others of their age, experience, or environment. These children and youth require services not ordinarily provided by the regular school program. Children and youth possessing these abilities can be found in all populations, across all economic strata, and in all areas of human endeavor. Gifted students may be found within any race, ethnicity, gender, economic class, or nationality. In addition, some students with disabilities may be gifted. Madison City Schools shall prohibit discrimination against any students on the above basis with respect to his/her participation in the gifted program.





# Gifted Services in Madison City Schools

- Consultation services offered for K-2.
- Collaboration services for general education teachers across grade levels concerning meeting the needs of high-end learners in the general education classroom.
- Second Grade Child Find: All second graders are observed throughout their second grade year using state mandated protocol.
- Pull out services for grades 3-5
- Students can be referred for screening at any time from 3rd-5th grade by teachers, counselors, administrators, parents or guardians, peers, self, and other individuals with knowledge of the student's abilities. These pullout services provide curriculum that is concept and problem based as well as provide the social and emotional support gifted learners often need.
- 6th grade Innovative Explorations course offered for gifted qualified students.
- Advanced courses offered for grades 7-12.

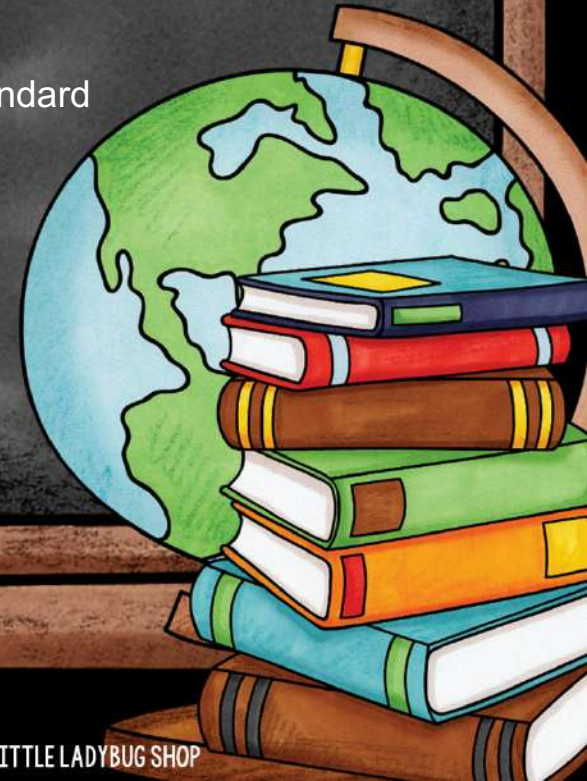
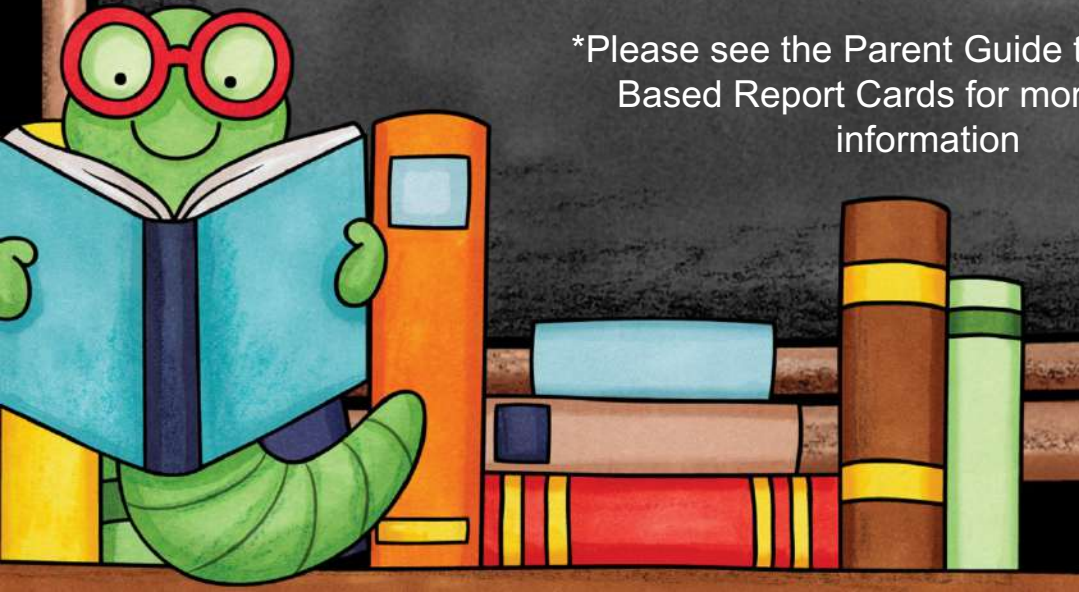




# Report Cards: Academics

- Sent home at the end of each 9 weeks
- Grading Scale:
  - 1<sup>st</sup>, 2<sup>nd</sup>, and 3<sup>rd</sup> nine weeks:**
    - 3 – Consistently demonstrates mastery of the standard
    - 2 – Sufficient progress toward mastery of the standard by end of year
    - 1 – Insufficient progress toward mastery of the standard by end of year
    - / - Standard not assessed at this time
  - 4<sup>th</sup> nine weeks only:**
    - 3 – Consistently demonstrates mastery of the standard
    - 2 – Inconsistently and/or partially demonstrates mastery of the standard
    - 1 – Insufficient mastery of the standard

\*Please see the Parent Guide to Standards Based Report Cards for more specific information

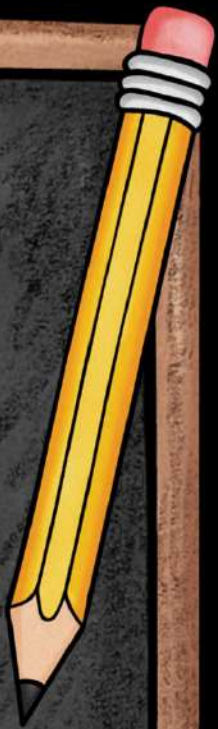




# Report Cards: Behaviors that Support Learning

- Grading Scale:
  - S- Satisfactory: consistently demonstrates the behavior
  - N- Needs Improvement: Inconsistently demonstrates the behavior
  - U- Unsatisfactory: Rarely demonstrates the behavior and learning is affected

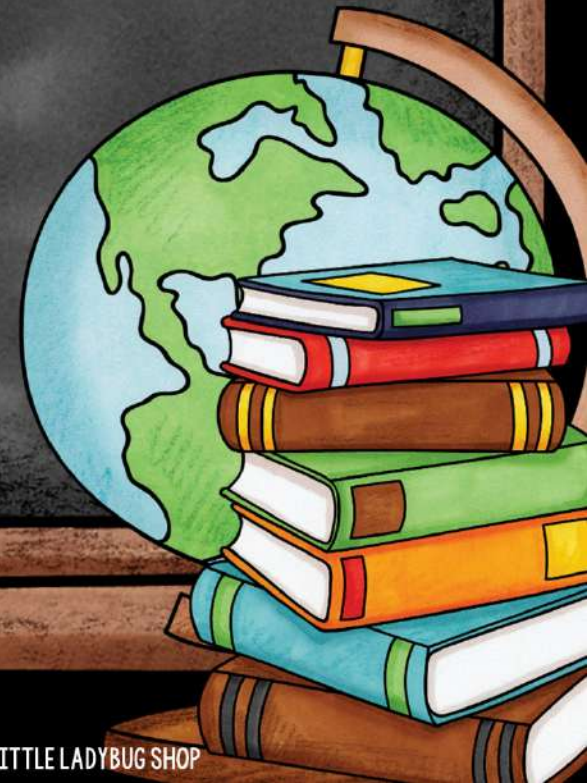
\*Behavior grades may change positively or negatively as the year progresses





# Progress Reports

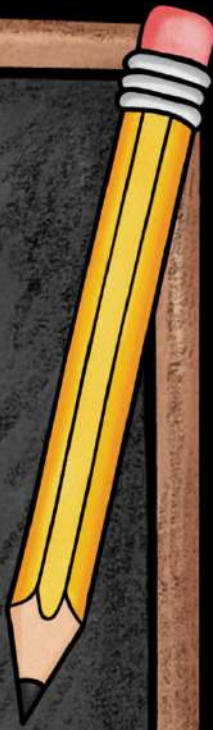
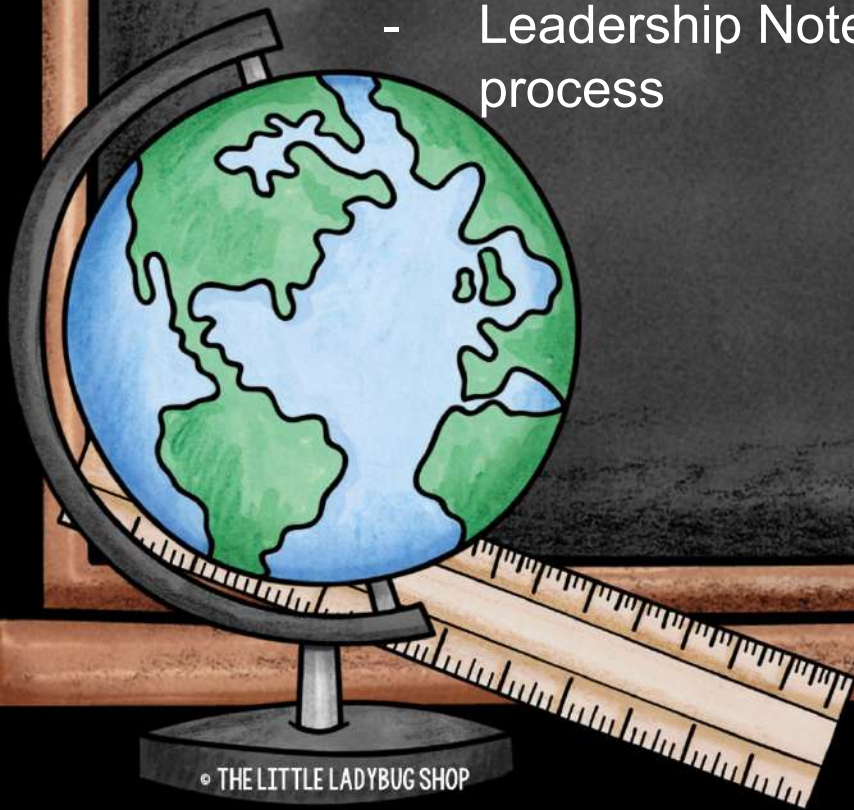
- Sent home at the 4.5 week mark
- 3, 2, 1 scale is not used on Progress Reports
- Standards that need continued practice are highlighted and comments are made on student needs





# The Leader in Me

- A process designed to help teachers develop leadership skills in their students
- Helps students discover their unique strengths
- Gives all students an opportunity to shine
- Helps infuse the language of the 7 Habits into all areas of life
  - Leadership Notebooks will be used as part of this process





# Schoolwide Clubs

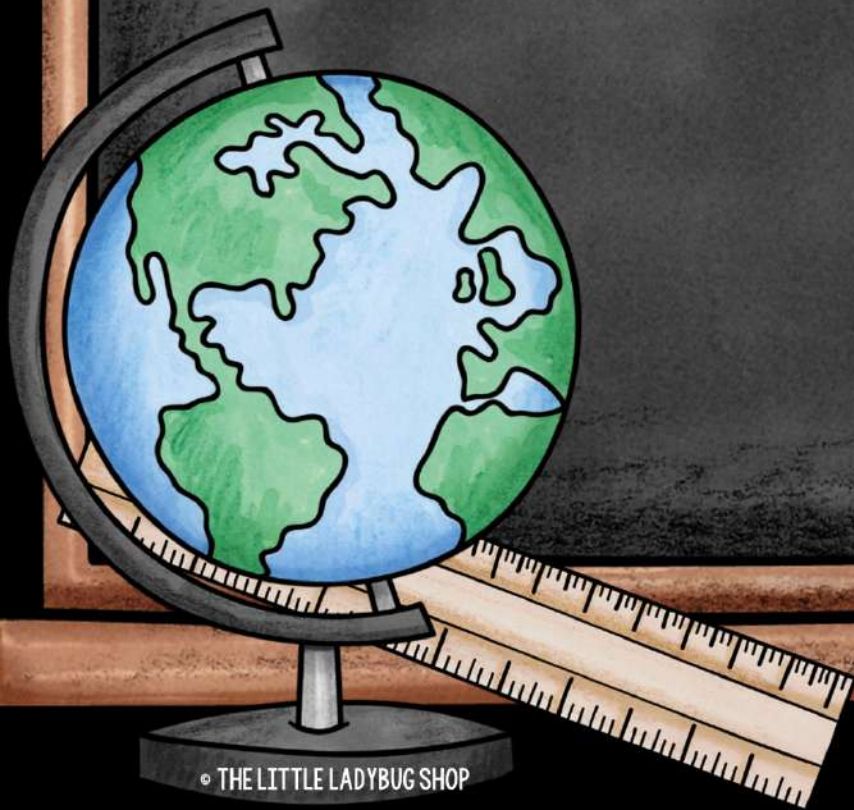
- Kindergarten students begin clubs 2<sup>nd</sup> semester to allow them time to get used to school procedures and routines
- Students choose their top 4 choices at school & are placed based on their choices
- Students will attend clubs every other Friday in their Club Sponsor's classroom



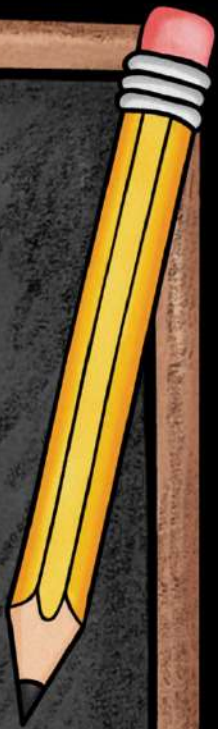


# Behavior Plan: Class Dojo

- Students earn points based on positive and negative behaviors
- Parents should check their student's behavior online or on the app each day and initial the behavior log in the binder



© THE LITTLE LADYBUG SHOP





# Parent Teacher Conferences

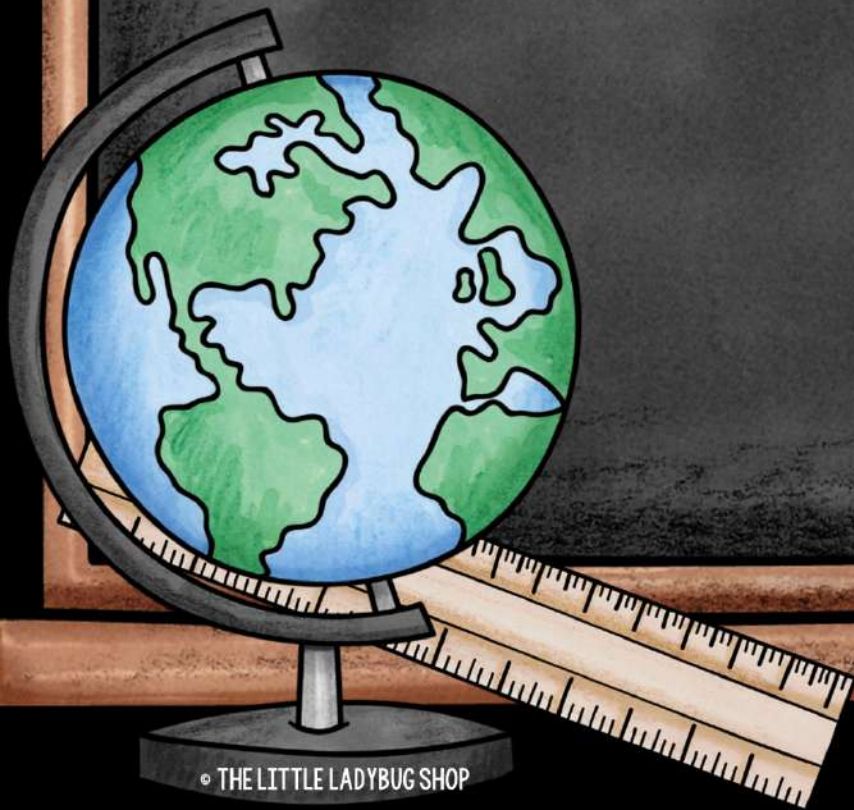
- Teacher called conferences: Fall, Spring, and a conference form in May
- Parents may call for a conference at any point throughout the school Year



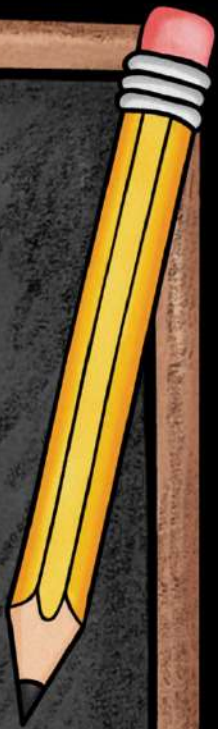


# Tuesday Folders

- Sent home every Tuesday
- Includes student work, important notes, schoolwide information, PTA papers and Flyers
- Please empty this folder every Tuesday and return to school on Wednesday



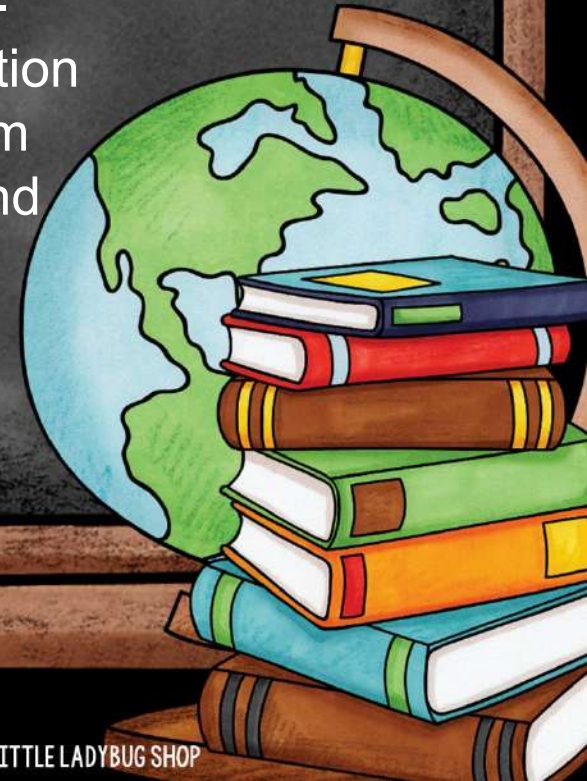
© THE LITTLE LADYBUG SHOP





# Transportation

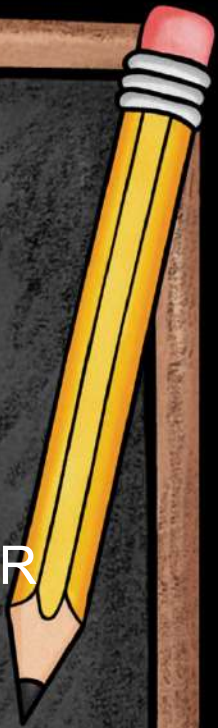
- ALL transportation changes must be communicated by handwritten note, e-mail (preferred), or phone call to the office before 1:30 PM on the day of the change.
- If there is no notice, your child will be sent home their regular way. \*Telling your child the change verbally does not count. It must be communicated to the teacher or office.\*
  - Please try to keep your child's transportation as consistent as possible. This helps them as well as their teacher! We do understand that sometimes last minute changes are needed.





# Absences

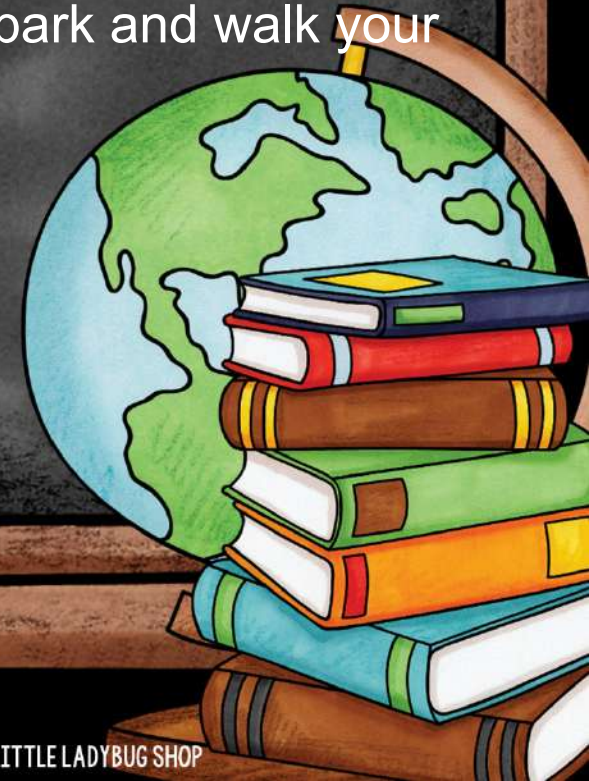
- Student absences will be considered UNEXCUSED until a note is turned in.
- 10 parent notes are allowed throughout the year
- Unlimited amount of doctor's excuses
- Tardies are issued when your child checks into school late OR checks out of school early





# Morning Car Line & School Hours

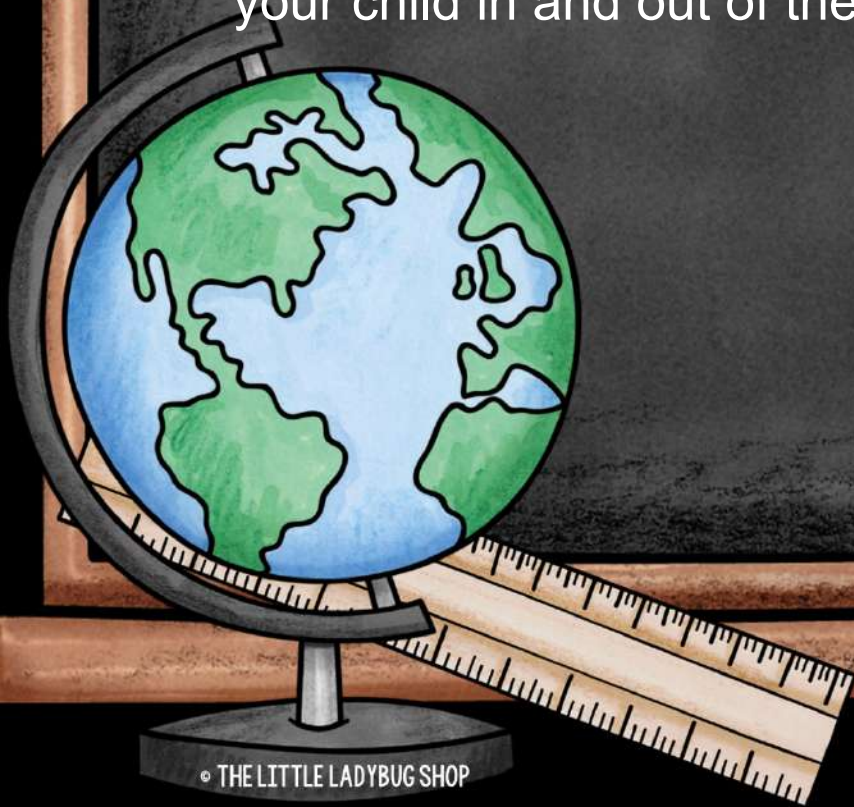
- Car line opens at 7:10 and closes at 7:35
- Please stay in your vehicle! Teachers will be available to help your child in and out of the car safely.
- If car line is closed when you arrive, you must park and walk your child into the front office to sign them in.





# Afternoon Car Line

- Car tags are required in order to pick up your child. These are provided by your child's teacher.
- If you do not have it, you will be sent to the front Office to show your ID and then your child will be sent to the Office
- Please stay in your vehicle! Teachers will be available to help your child in and out of the car safely.



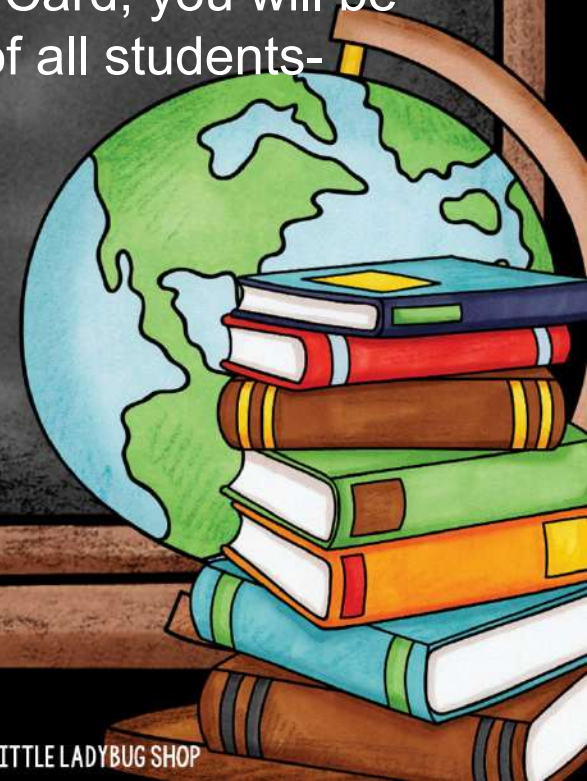
© THE LITTLE LADYBUG SHOP





# Visitors & BIB Cards

- ALL parents must have a BIB card in order to join us on field trips.
- A Bib card is a background check & Can be accessed Here:  
<https://bib.com/secureVolunteer/Madison-City-Schools/>
- You must first come to Heritage & sign in at the Front Office to show your BIB Card. Then you can meet us at the location. If you do not have your Heritage Sign-In sticker & BIB Card, you will be asked to leave the group. This is for the safety of all students- including yours!





# Field Trips & Chaperones

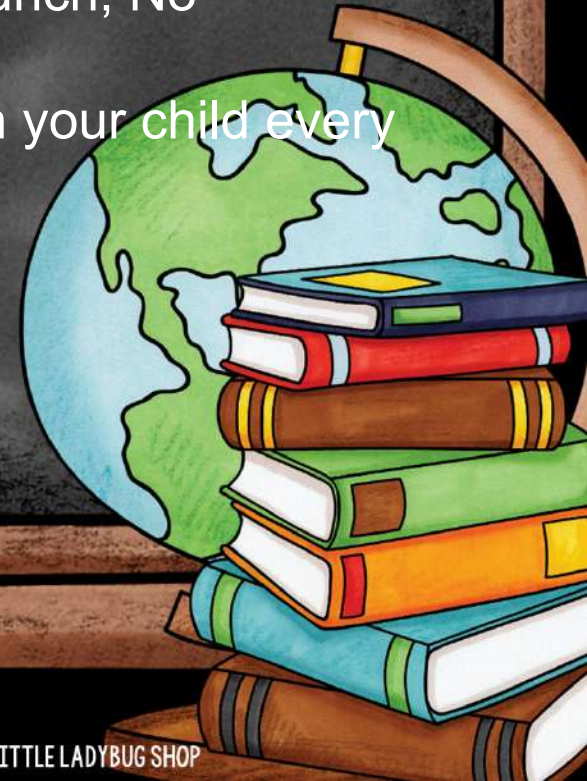
- Field Trips: Pumpkin Patch in October, HSV Botanical Gardens in April/May, possible field trip to see a play
- Students must have a NOTARIZED Out-of-County form; these are available to be notarized tonight and at other curriculum nights
- All Madison City chaperones must have a BIB card to attend our field trips. This takes a few weeks to get so begin this process ASAP! You must first sign in at the Front Office and a) ride the bus with us if you are selected or b) meet us at the location.
- All chaperones must sign the Field Trip Chaperone agreement
- Please visit this link to apply for your BIB card:  
<https://bib.com/secureVolunteer/Madison-City-Schools/>





# Other Important Information

- Breakfast: Begins at 7:10 and ends at 7:35
- Show and Tell
- Rest Mats: Sent home each week to be cleaned
- Visitors: Must sign in at the front office and show ID
- Library Books: We visit the library each week. Please keep your child's book in their bookbag.
- Lunch: Students may buy lunch or bring their lunch, No refrigerators are available for lunches/Snacks
- Daily Snack: Please send a Healthy snack with your child every day. Snack is in the afternoon.



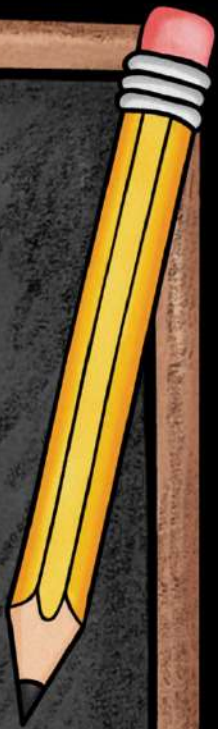


# Other Important Information

- Extra Clothing: shirt, socks, pants, underwear for any emergencies including accidents or water/mud from playground
  - Birthdays: No outside foods will be allowed into the school for the entire class. You may bring treats for your child only. Ice cream may be purchased through the cafeteria if you choose to do so.



© THE LITTLE LADYBUG SHOP





# Other Important Information

- Birthday Parties: Invitations can be sent home in binders but must be sent for the whole class or only the boys or only the girls
- School T-Shirts: These are sold by PTA for \$9. Kindergarten is purple. Please purchase one for field trips, special events, field day, etc. If you do not purchase one, please plan on your child having any purple shirt to wear on these occasions.
- Medication: Parents must fill out a form from the nurse and drop the medication off at the office themselves.



© THE LITTLE LADYBUG SHOP





# Other Important Information

- Class Celebrations: We will have a winter celebration in December and an End-of-Year celebration in May. Parents are invited to these 2 celebrations. \*Dates to be announced\*
- Emergency Early Dismissal: Please make sure your child's teacher has information about how your child will get home on these days.
- ½ Day Dismissals: School will dismiss at 11 AM. Please make sure your child's teacher knows of any transportation changes for these days. There will not be Expanded Day on ½ day Dismissals.





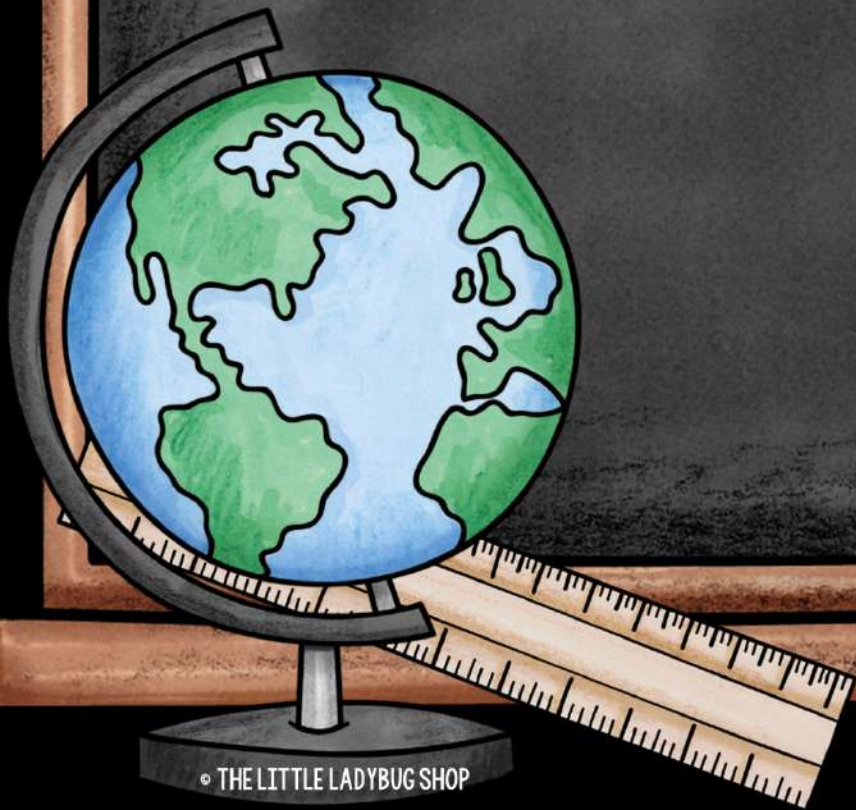
# Other Important Information

- PTA: Helps organize events for students, parents, and provides support for teachers. Sign up today!
- Room Mom: The room mom will be in charge of helping organize events for the class through the PTA. She will ask for donations and volunteers throughout the year.





# Questions?



© THE LITTLE LADYBUG SHOP

