

# Pig Heart Dissection 101

(gulp)

But sheep have nice hearts...



# Supplies you will use:



# Scalpel Blade



# Scalpel Handle



# Surgical Scissors



# Hemostats



# Dissection Tray & Pig Heart

**Don't forget your gloves!**

A photograph of a pig heart, which is a large, reddish-brown organ with a complex network of blood vessels and a prominent coronary artery. The heart is placed on a blue plastic dissection tray, which is set on a wooden surface. The text "Don't forget your gloves!" is overlaid on the image in a bold, black, sans-serif font, slanted diagonally across the heart.



# Slide blade on scalpel handle.

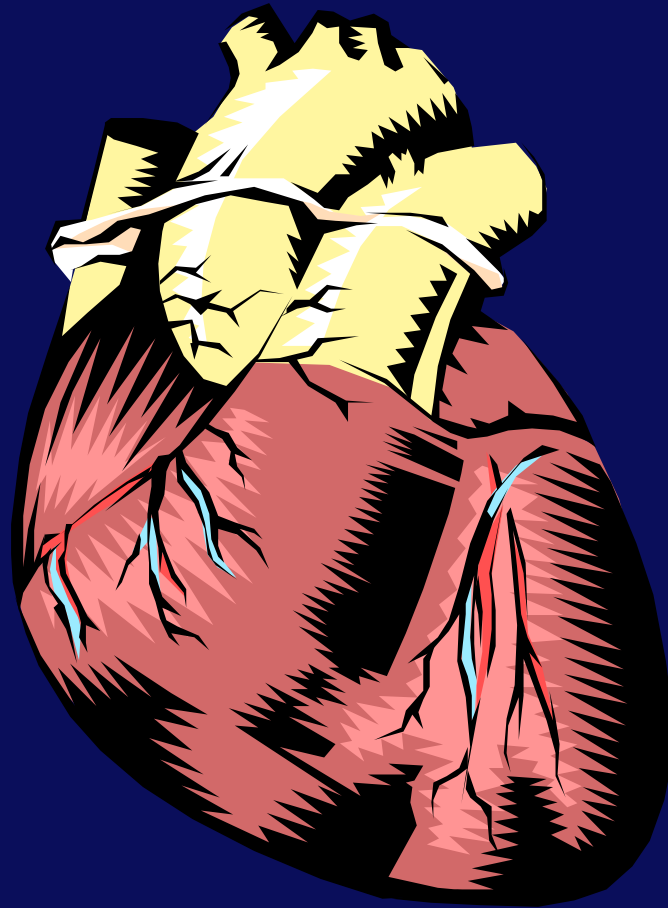


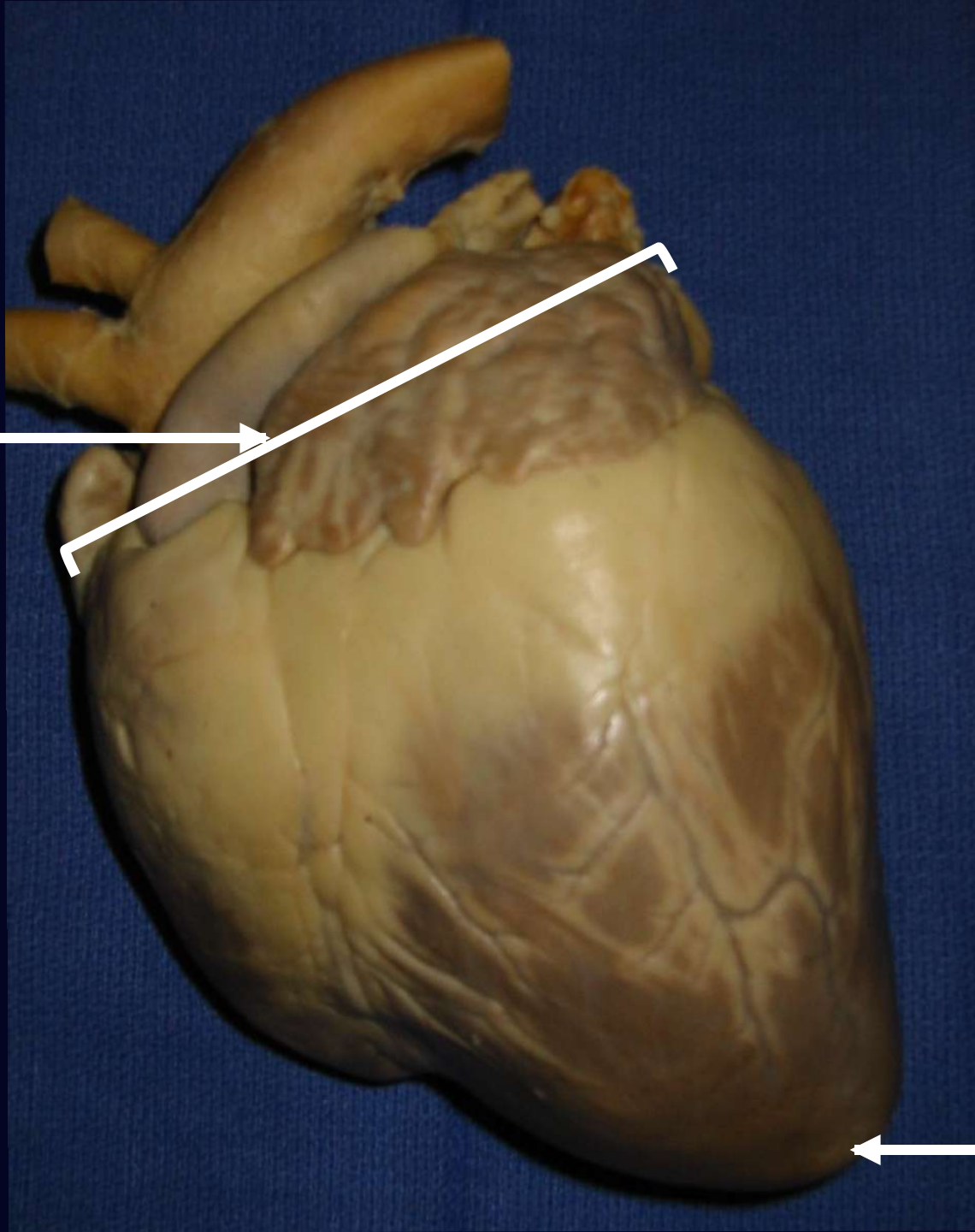
Peel back blade packet halfway. Slide over narrow tip of scalpel handle

**Scalpel is now ready for  
dissection.**



# Exterior Anatomy of the Heart



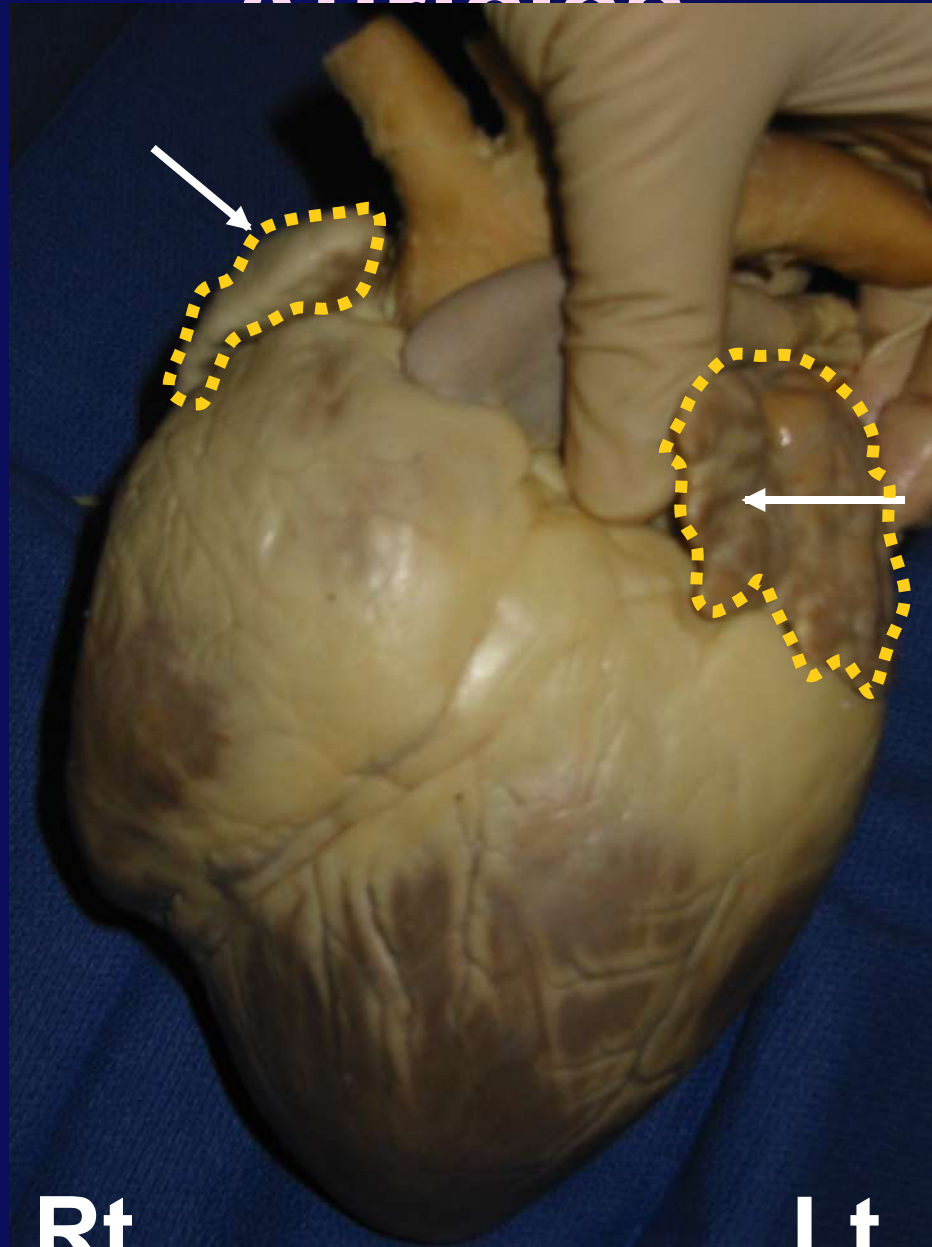


**Base**

**Apex**

# Auricles

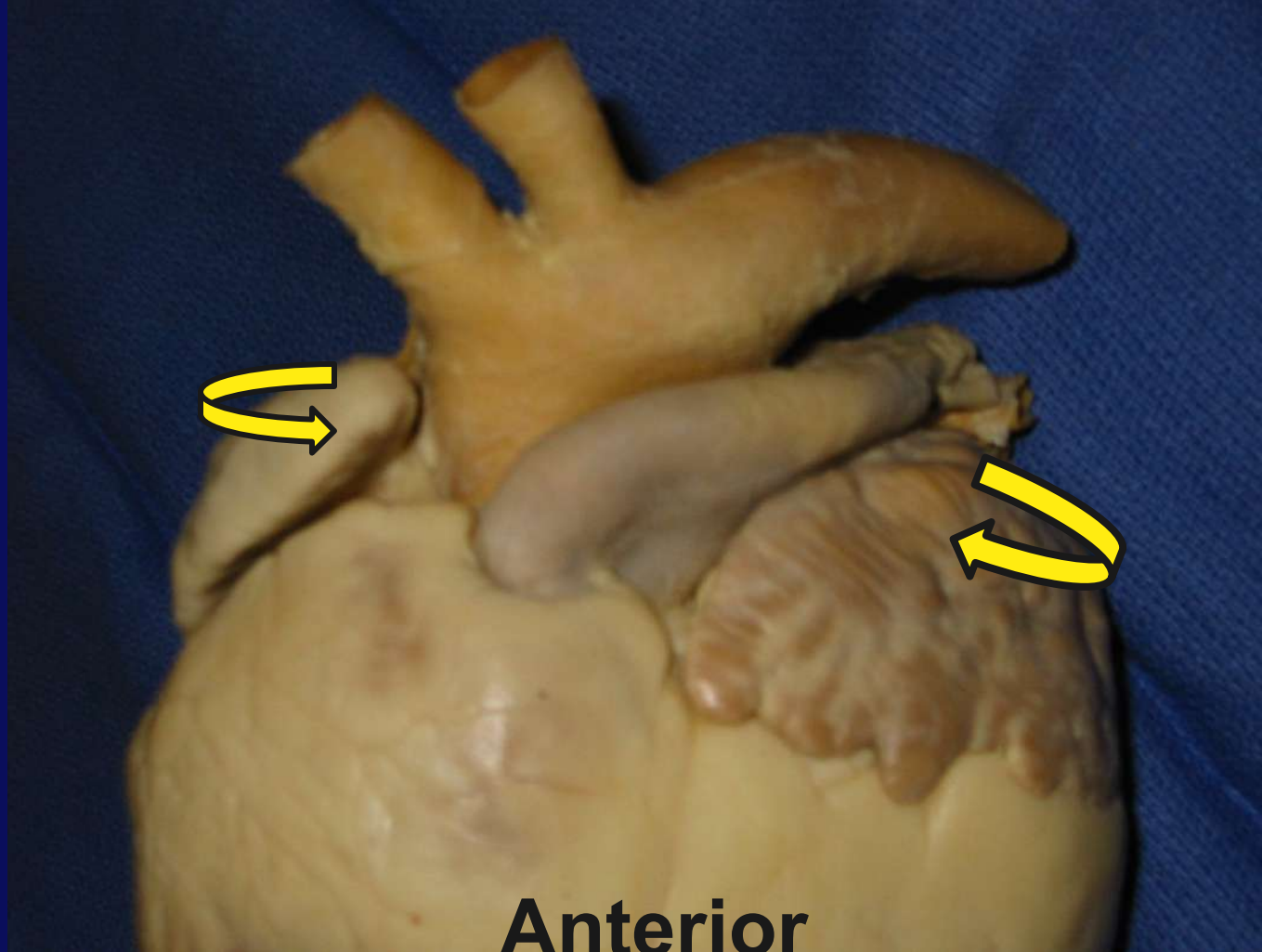
Ear-shaped extensions of the atria.



Rt.

Lt.

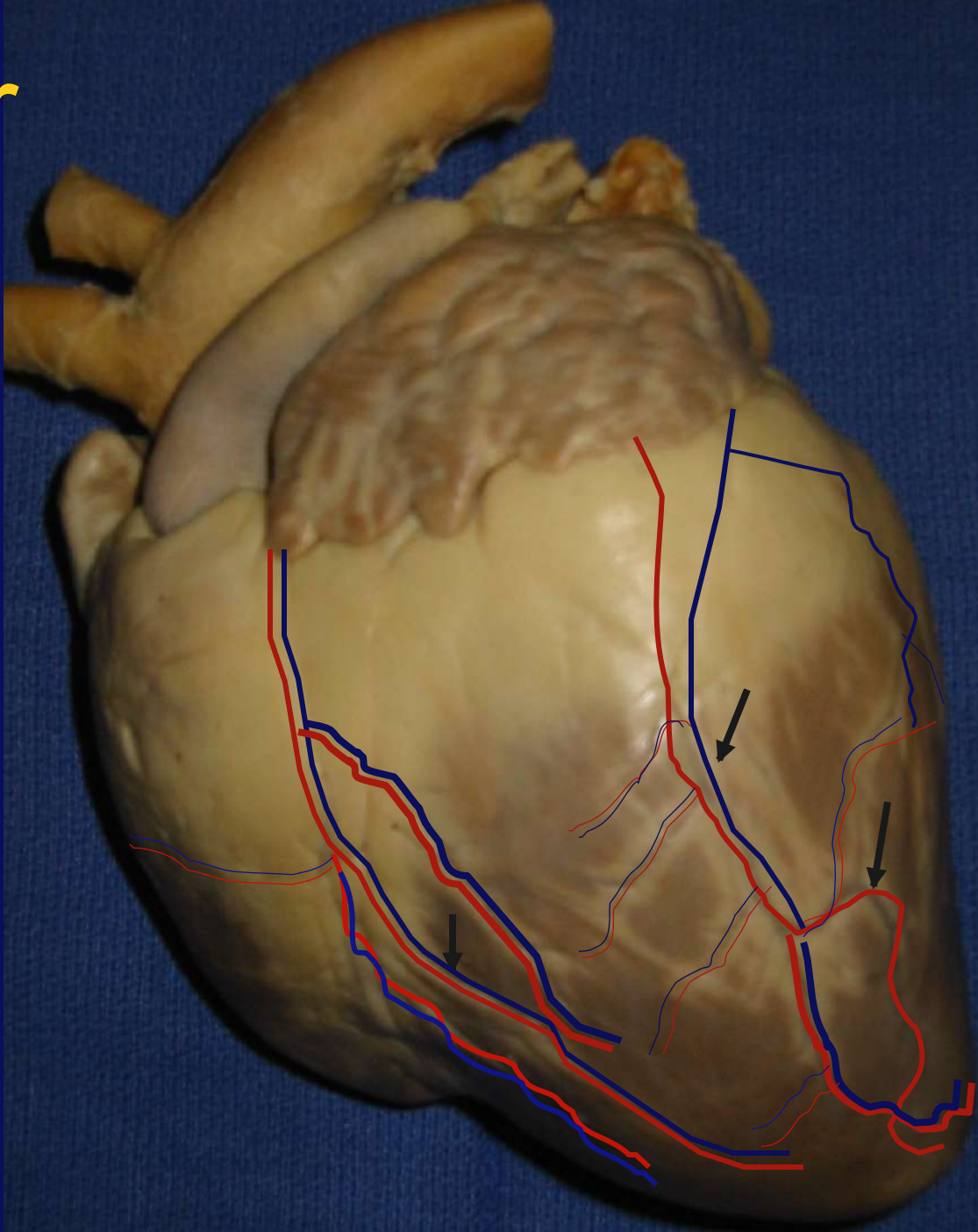
The auricles wrap around to the anterior side of the heart.



# The Coronary Vessels

The cardiac muscle receives oxygen for metabolism and releases waste products into coronary vessels.

# Anterior View





# The Great Vessels

The large veins & arteries,  
which transport blood to and  
from the heart muscle.

# Locating the great vessels:



# Anterior View--Aortic Arch

**Aorta**

Arising from the left ventricle of the heart is the largest artery of the body, the aorta.



**Rt.**

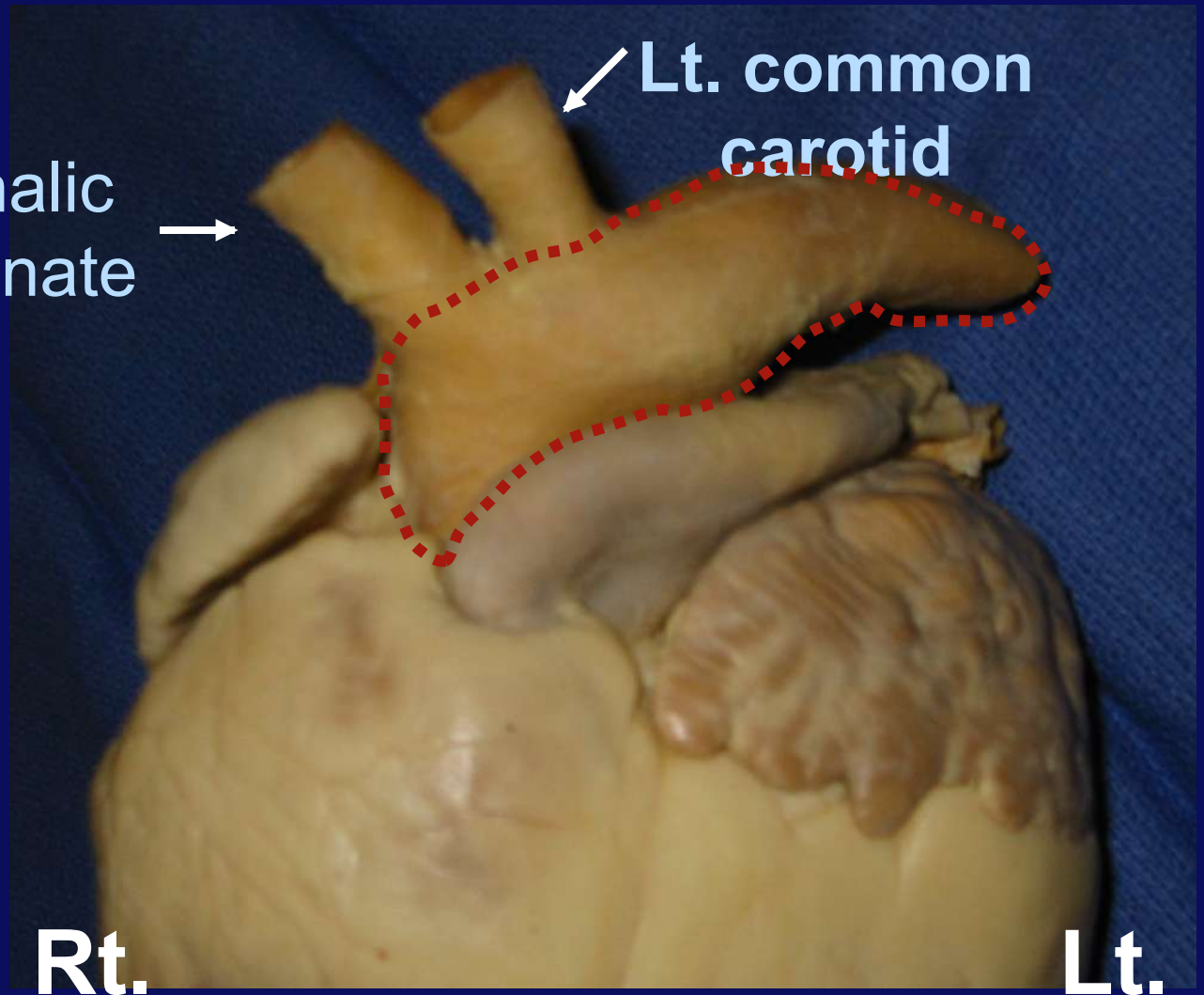
**Lt.**

# Anterior View--Aortic Arch

Brachiocephalic trunk (innominate artery)



Lt. common carotid



# Aorta: Posterior View

Aorta



Lt.

Rt.

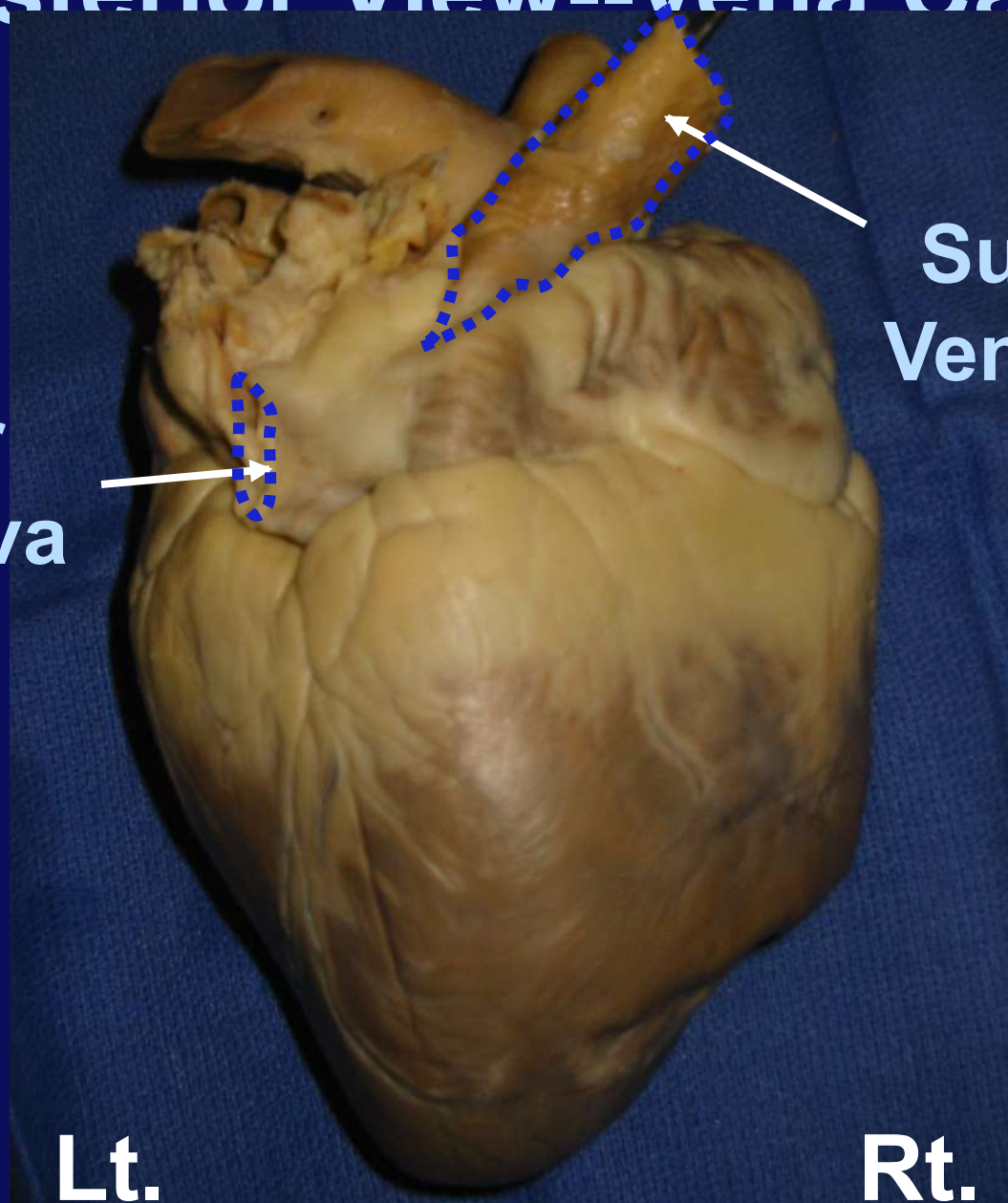
# Posterior View--Vena Cavae

Inferior  
Vena Cava

Superior  
Vena Cava

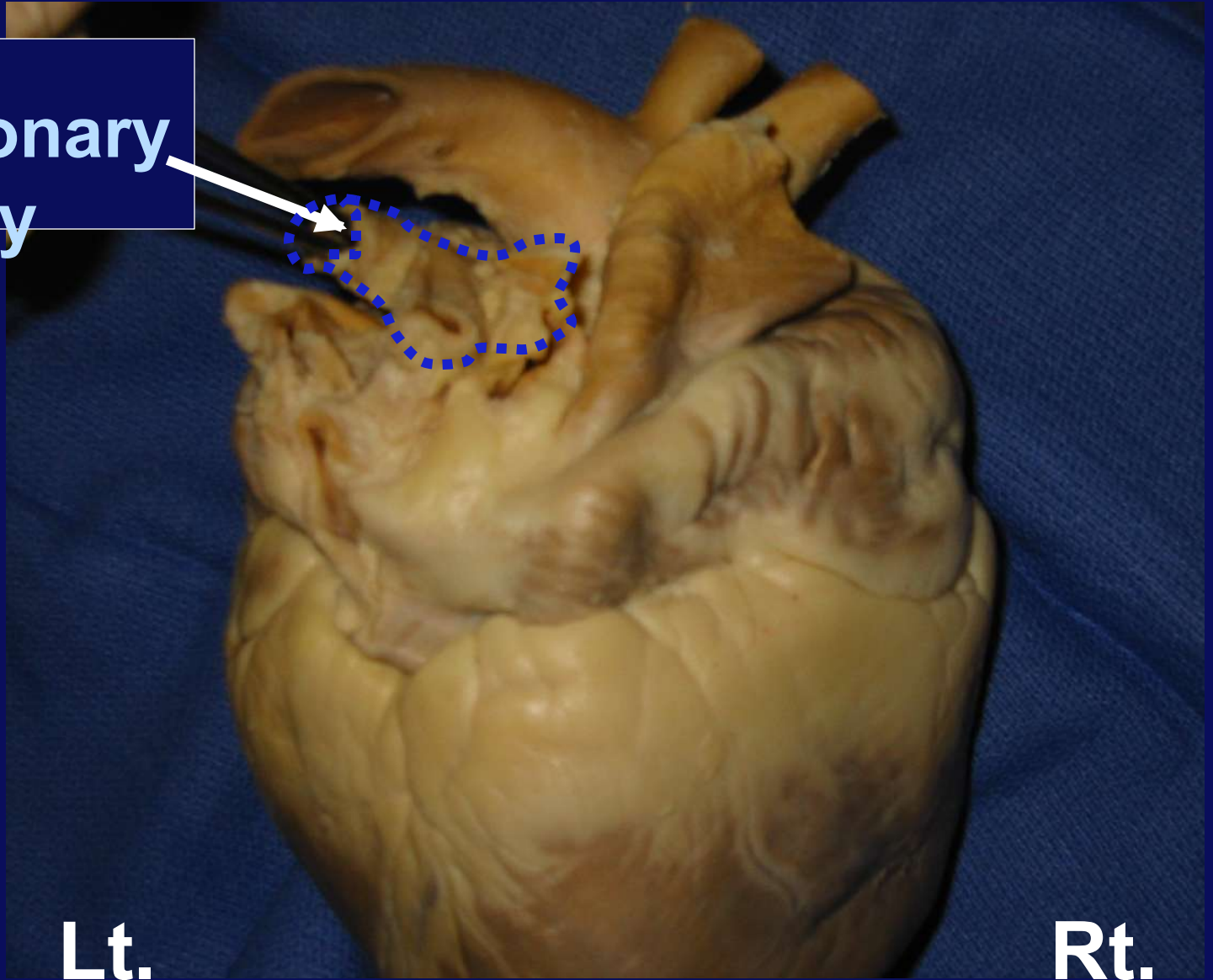
Lt.

Rt.



# Posterior View--Pulmonary Artery

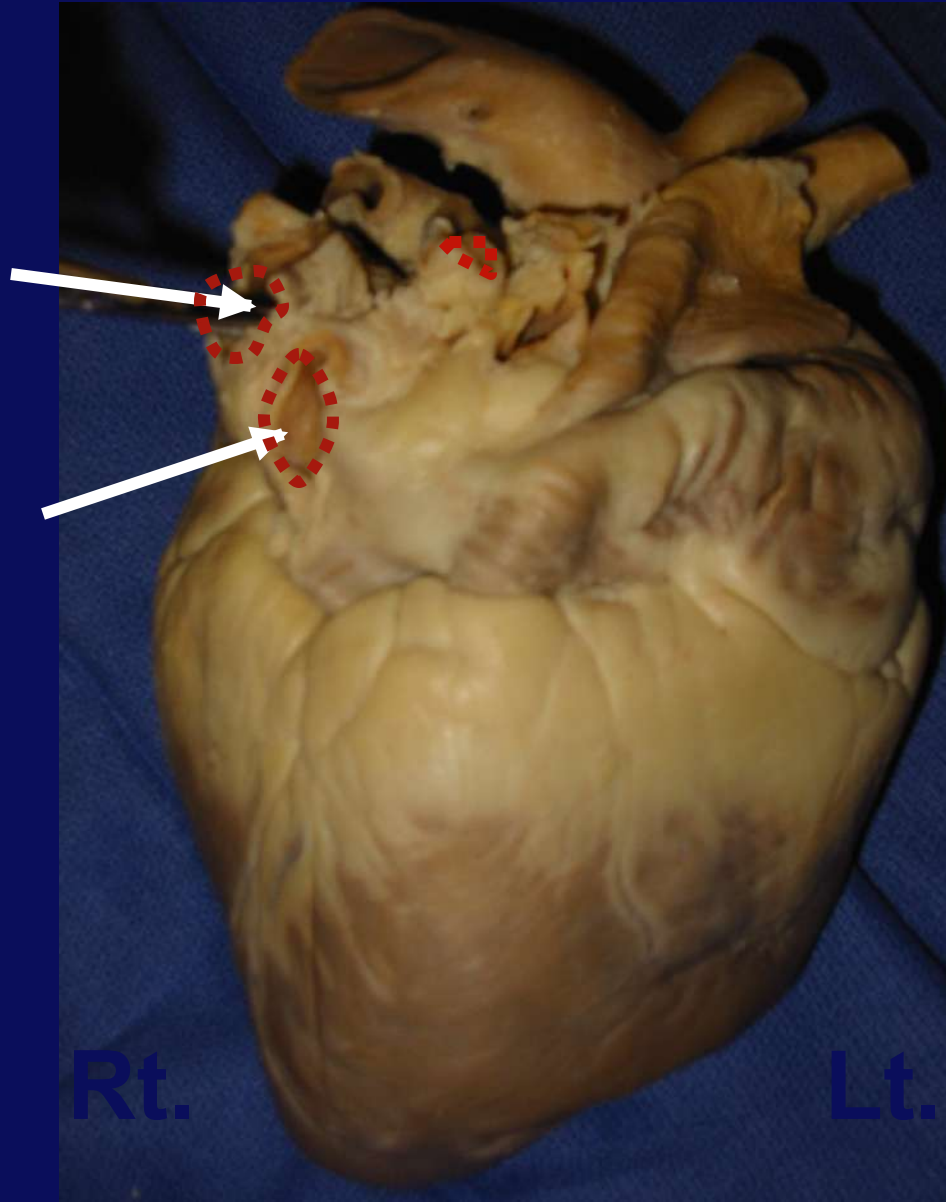
Lt. Pulmonary  
Artery



Lt.

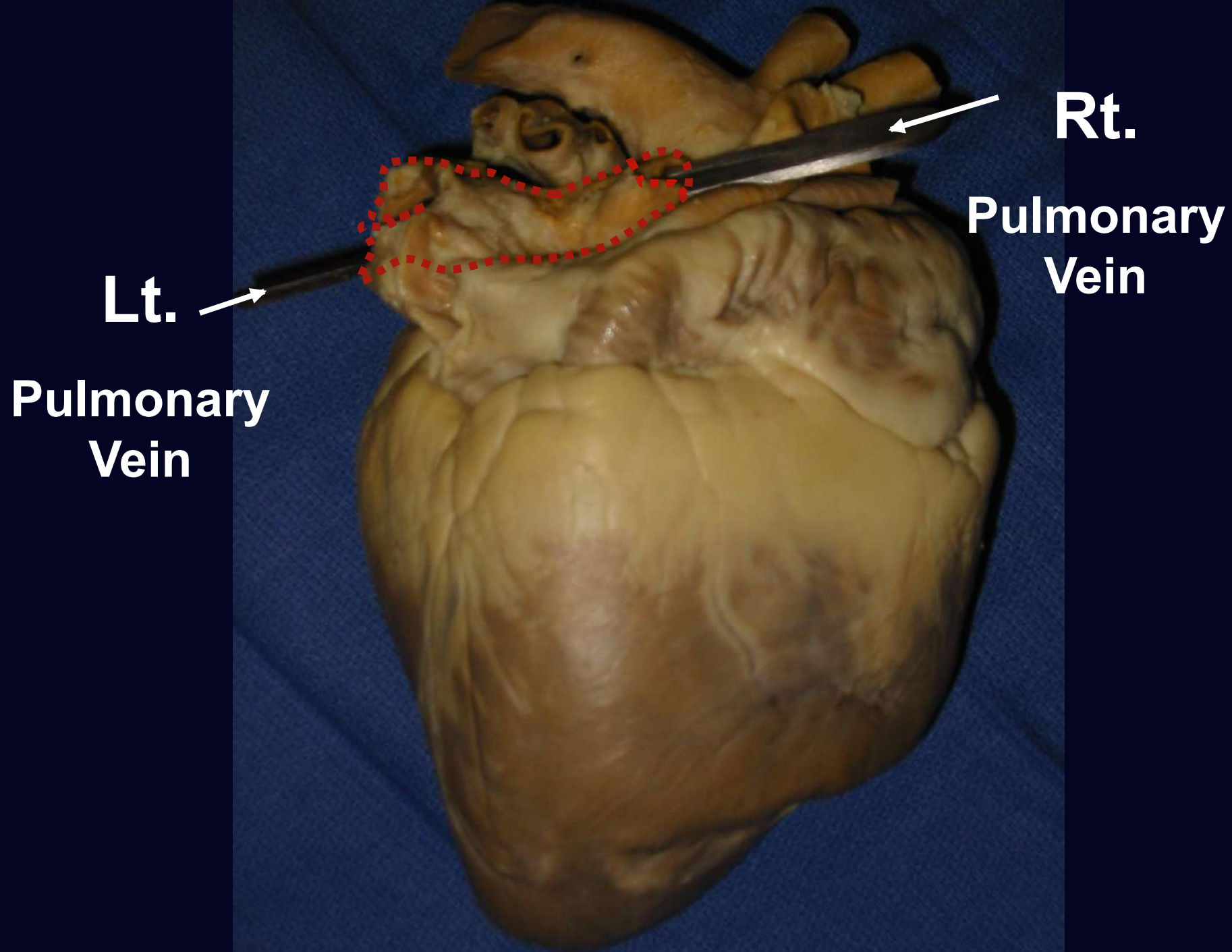
Rt.

# Posterior View--Pulmonary Veins



Pulmonary veins are inferior to pulmonary arteries





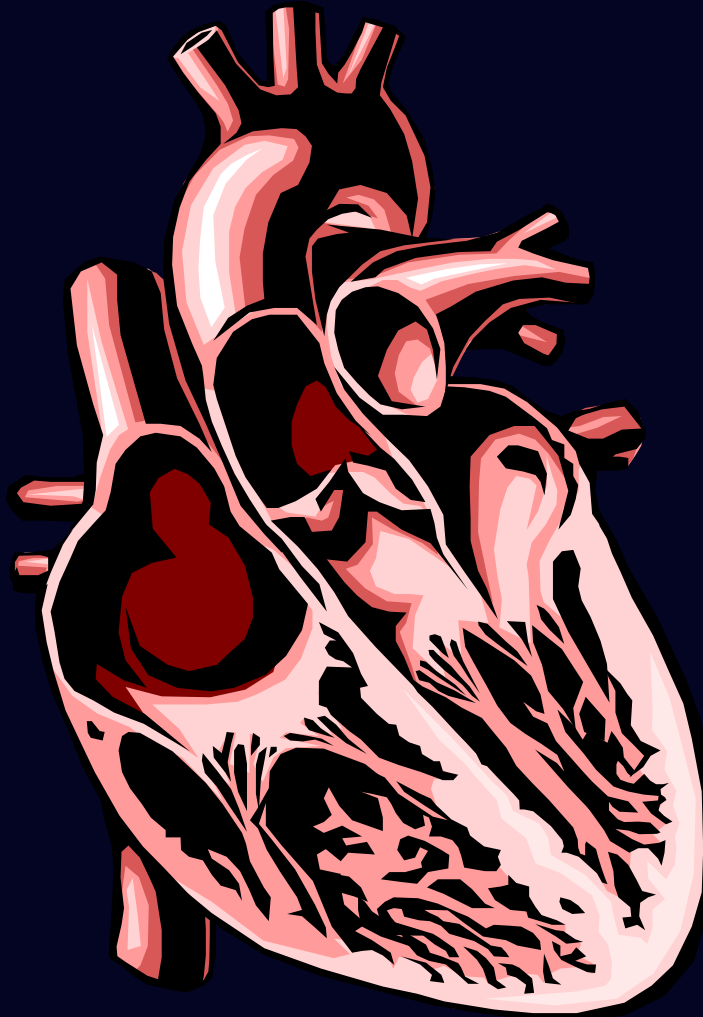
**Lt.**

**Pulmonary  
Vein**

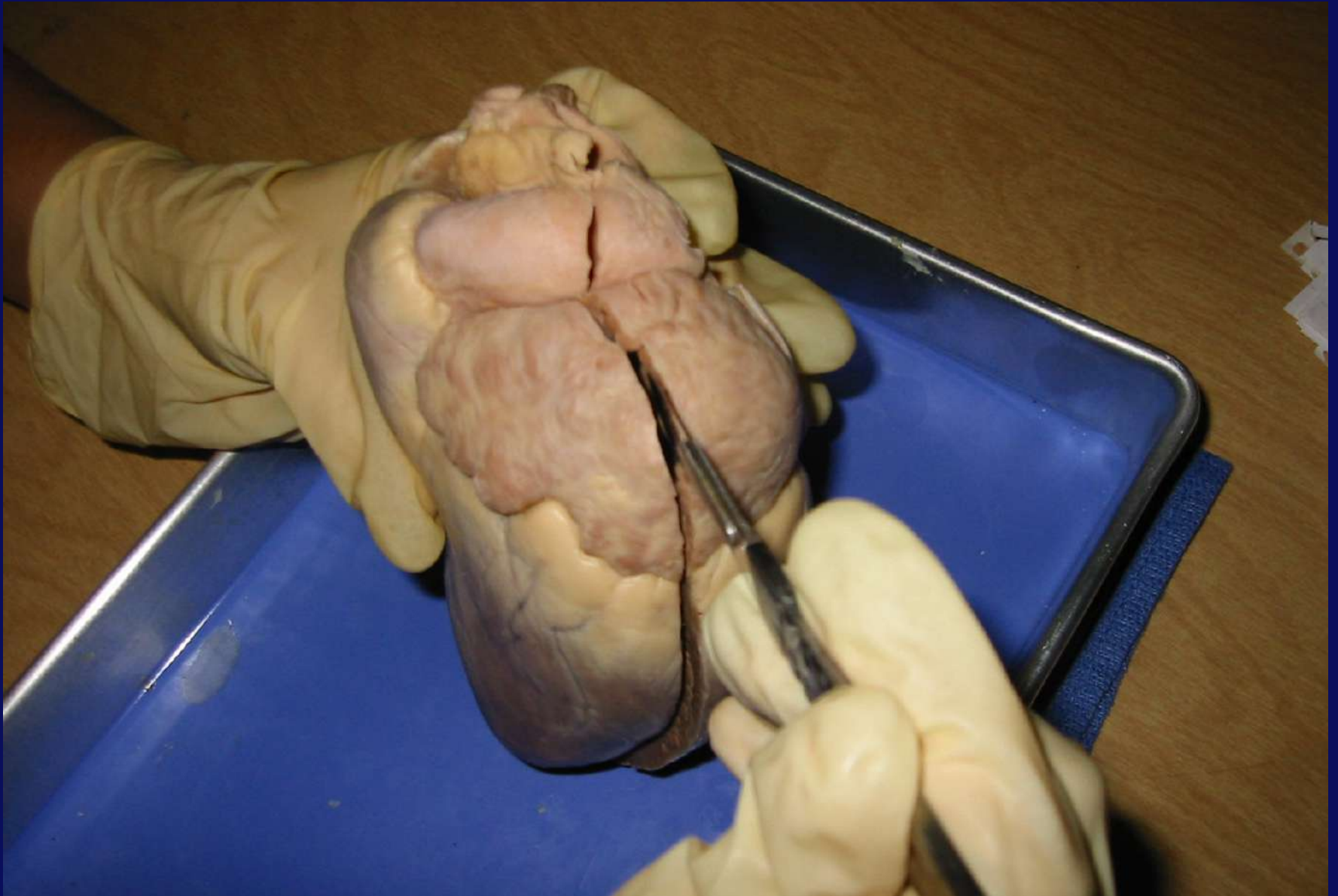
**Rt.**

**Pulmonary  
Vein**

# Interior Anatomy of the Heart



**Dissect heart on the coronal plane.**



Open heart  
on dissection  
tray.



Anterior half

Posterior  
half

Rt

Lt

**Rt. Atrium**

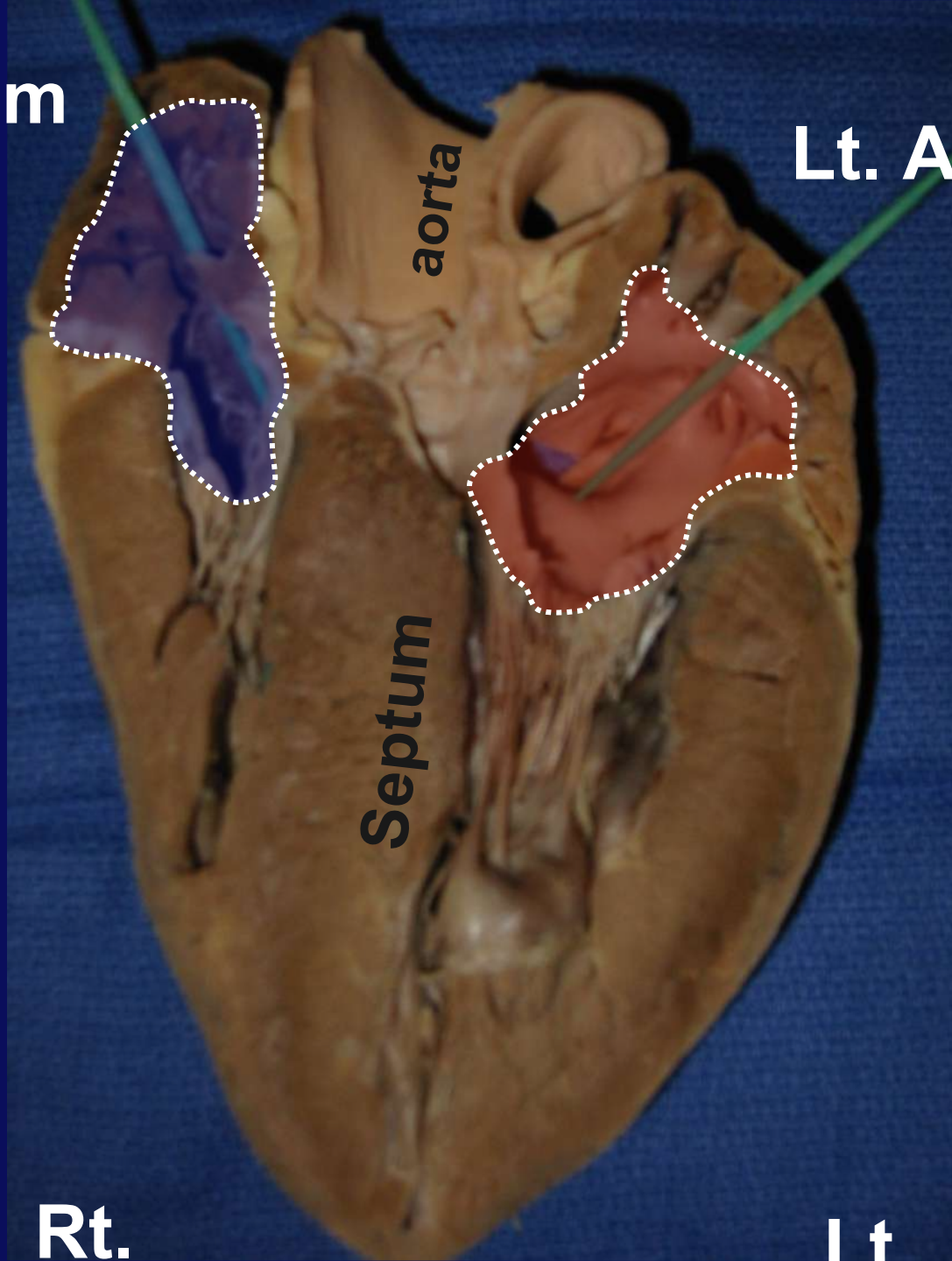
**Lt. Atrium**

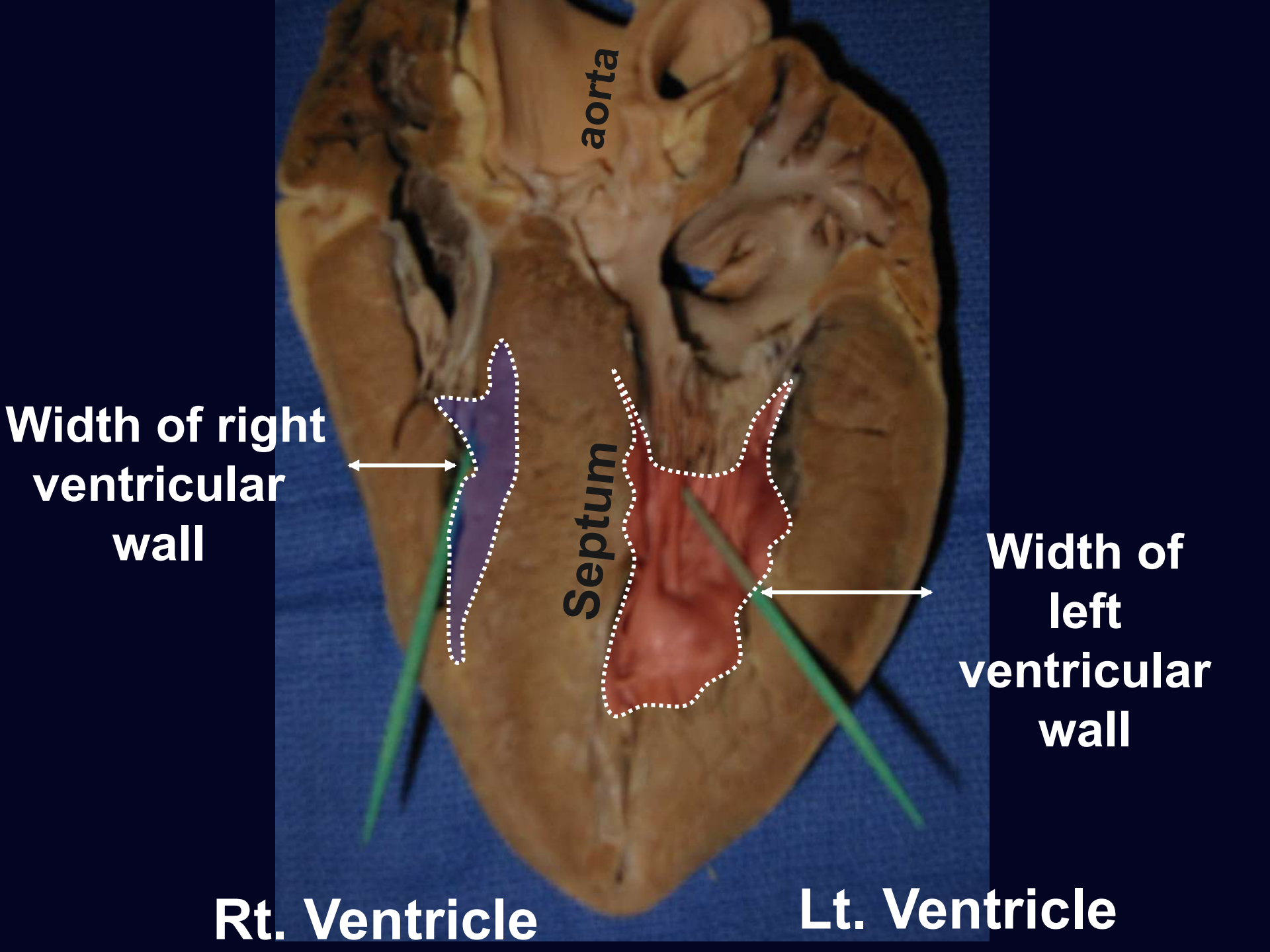
**aorta**

**Septum**

**Rt.**

**Lt**





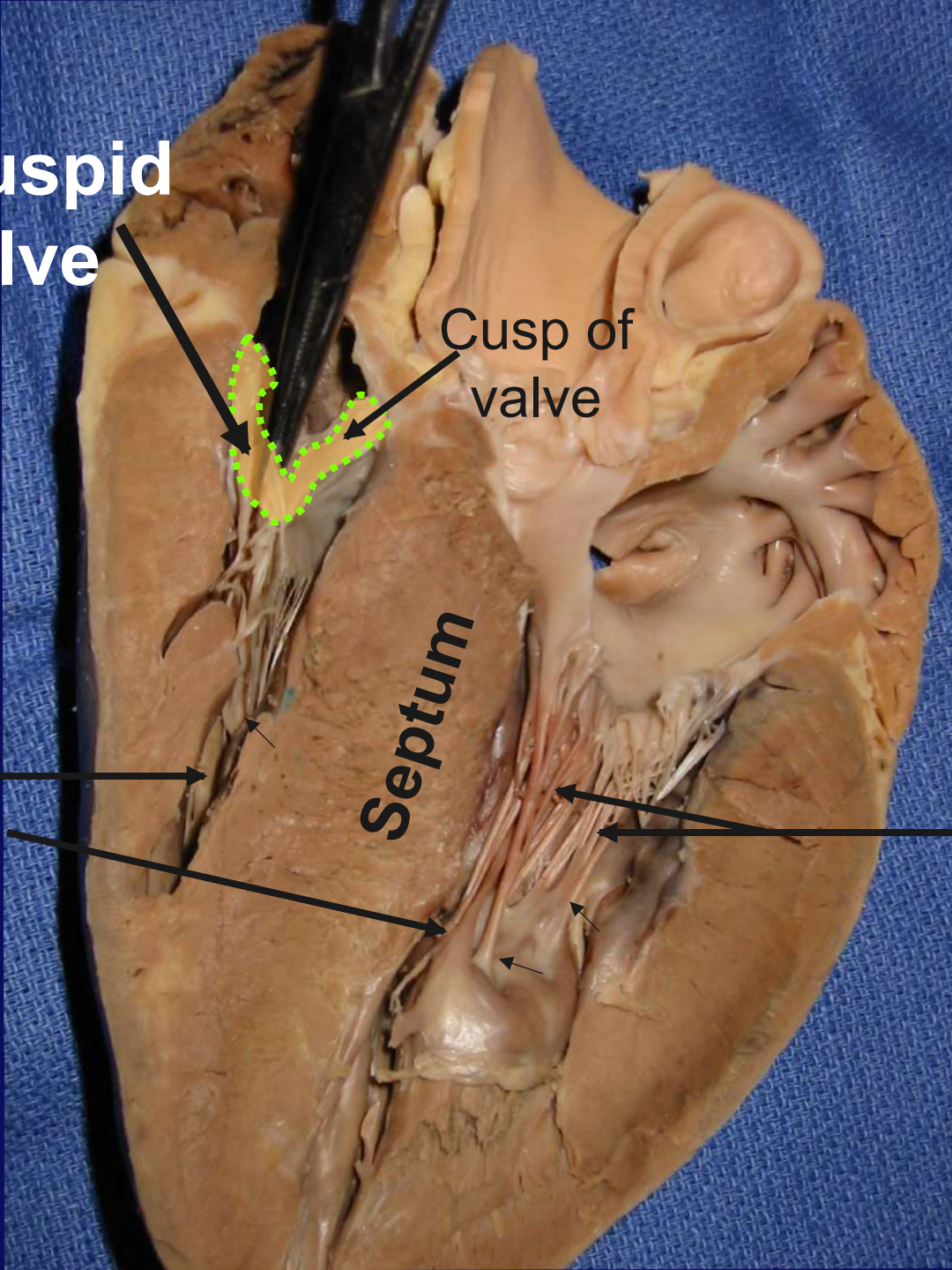
**Tricuspid valve**

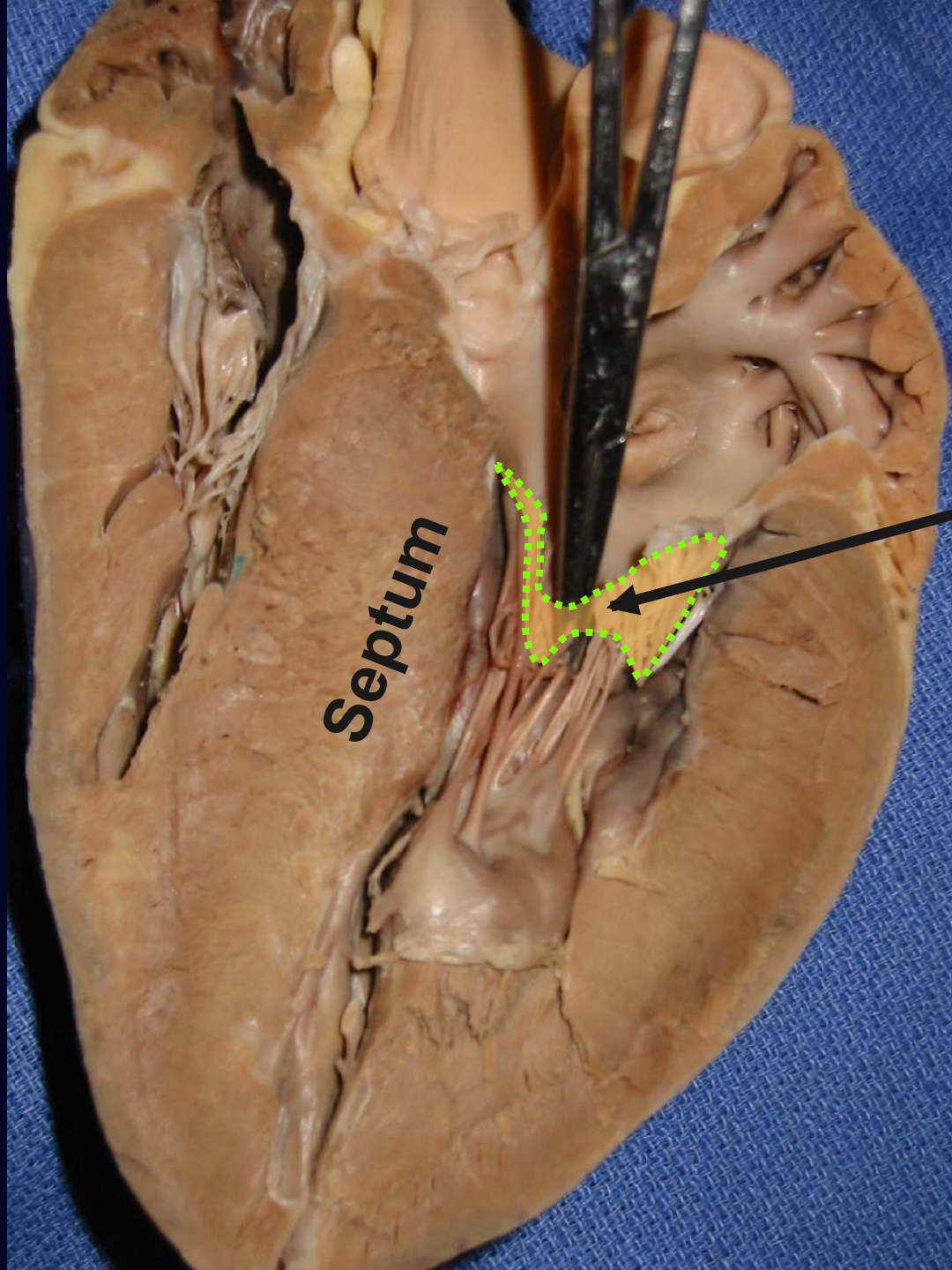
Cusp of valve

**Septum**

**Papillary muscles**

**Chordae tendinae**

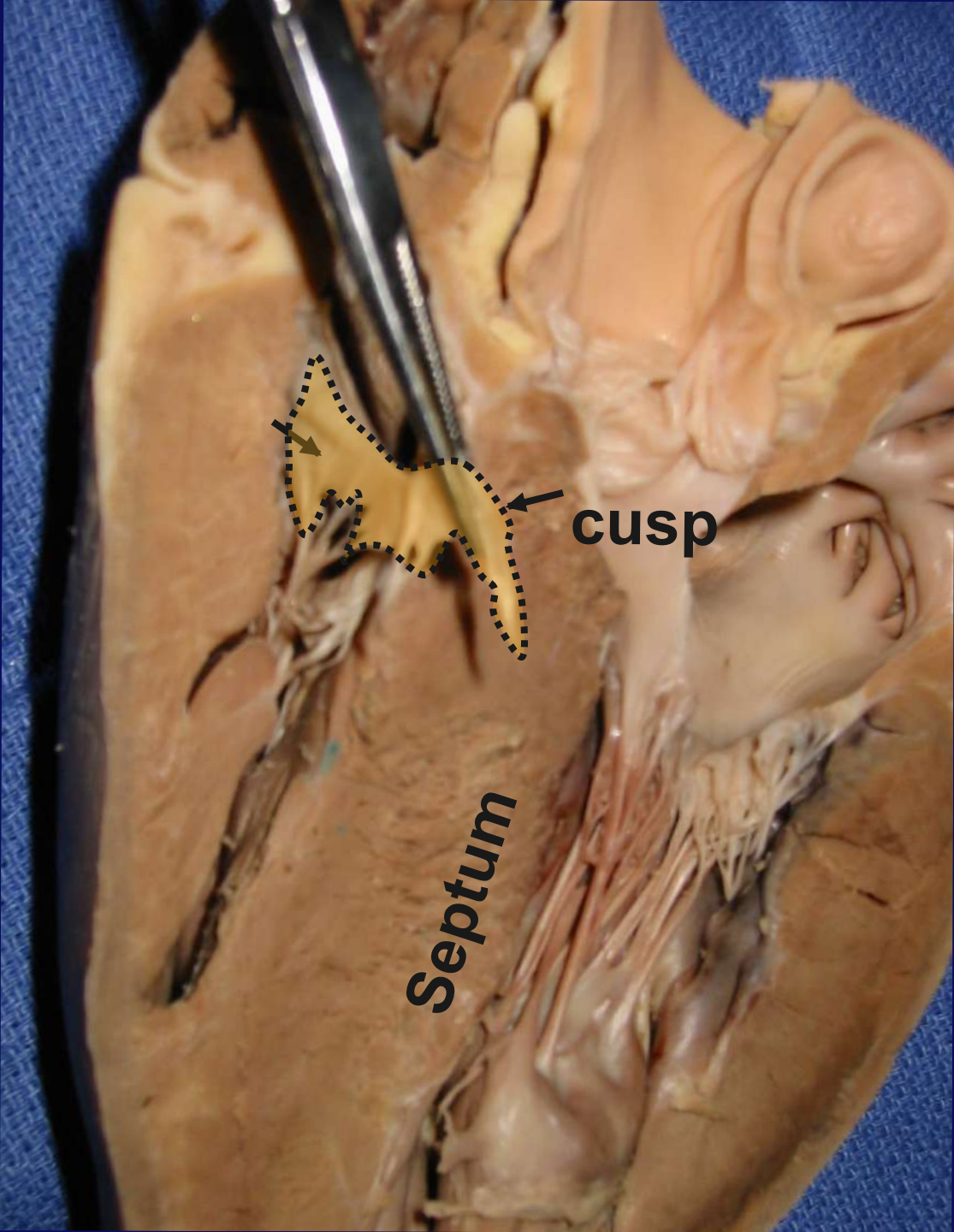




**Septum**

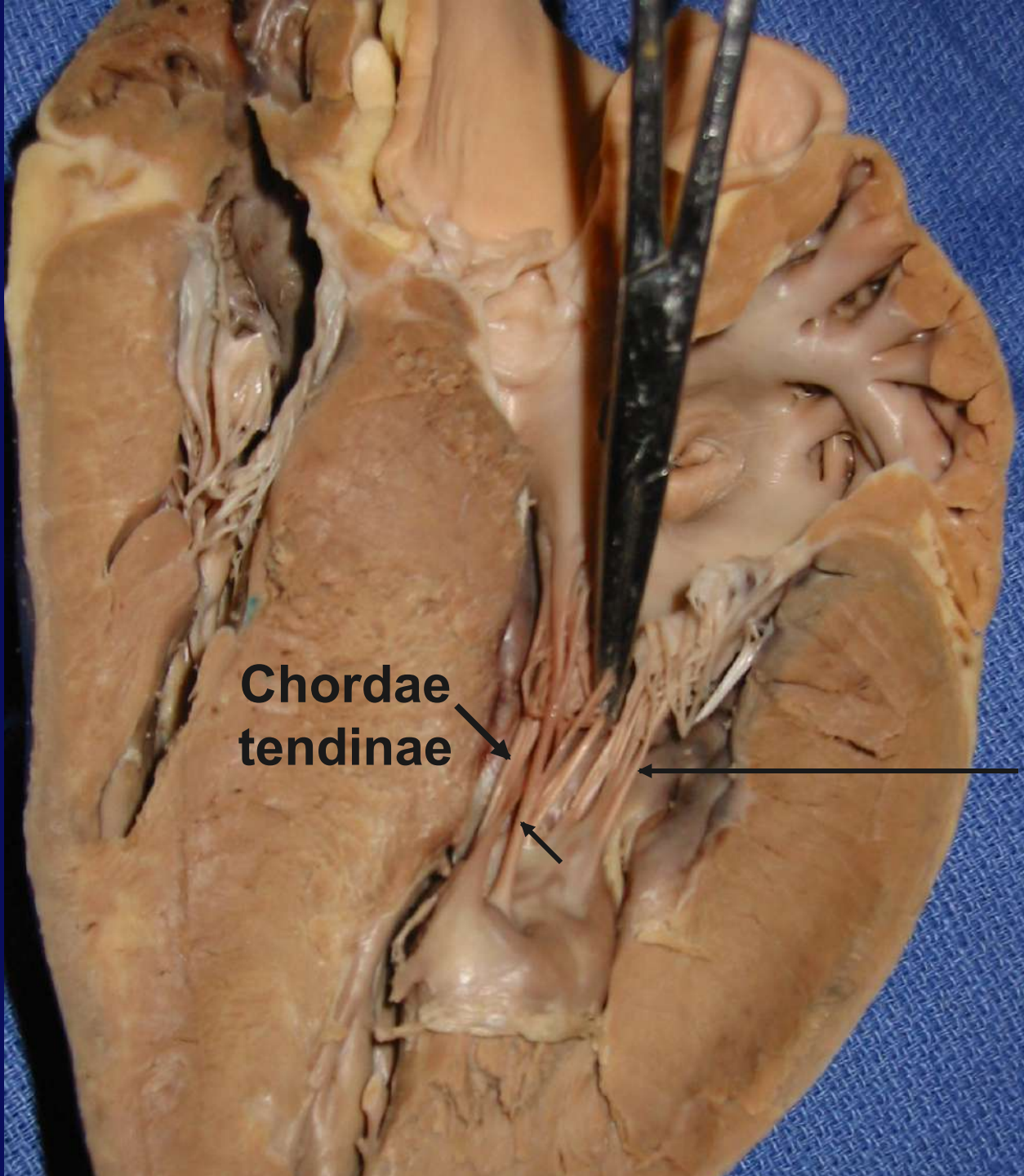
**Mitral valve**





cusp

Septum



**Chordae  
tendinae**

**Chordae  
tendinae**



# Check points--Exterior Heart

Students should be able to point out:

- Apex & Base of heart
- Coronal Plane
- Anatomical Right & Left Sides of heart
- Anterior & Posterior Sides of heart
- Auricles
- Coronary Vessels

# Check points--Interior Heart

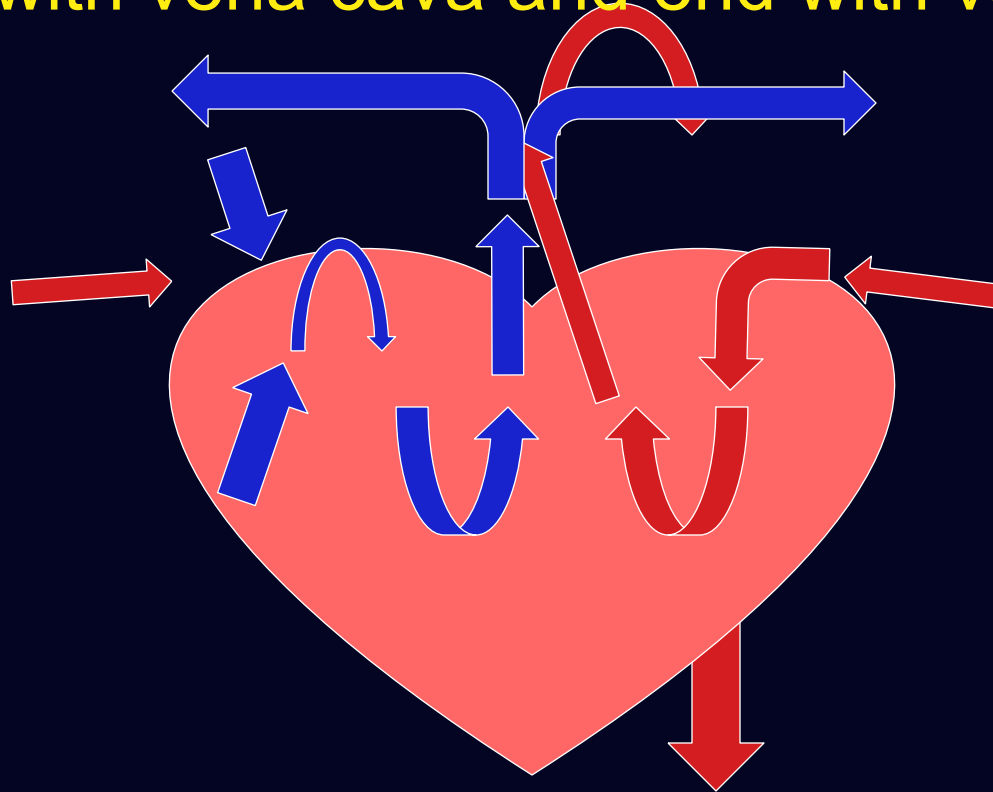
Students should be able to point out:

- Septum
- Atria & Ventricles
- Tricuspid Valve, Pulmonary Valve
- Mitral Valve, Aortic Valve
- Chordae Tendinae
- Papillary Muscles

# Final Check point

Students should be able to trace pathway of blood through great vessels and heart.

(begin with vena cava and end with vena cava)



**That's All folks!**  
**...and don't forget**  
**to clean up.**

