

# Feudal Japan

"Land of the Rising Sun"



# Terms to Know

- Shinto = Earliest religion in Japan, pre-Buddhism. Believes all natural things have their own spirits.
- Clan = group of families related by blood, marriage
- Taika Reforms = “Great Change”; forced some clans to give up land to the emperor; divided Japan into provinces; got idea from China
- Prince Shotoku = Early emperor of Japan; brought constitution, reforms, encouraged Chinese study

# Topic: Japan's Chinese Influence

Question: What influence did China have on Japan?

Japan...

- Allowed Buddhism from China and Korea to spread
  
- Copied, thanks to Prince Shotoku, Chinese-style temples, Chinese and Korean art, medicine, architecture, philosophy...



**HEY, QUIT  
COPYING!**

**Reforms, art, medicine,  
philosophy, and so  
on...**

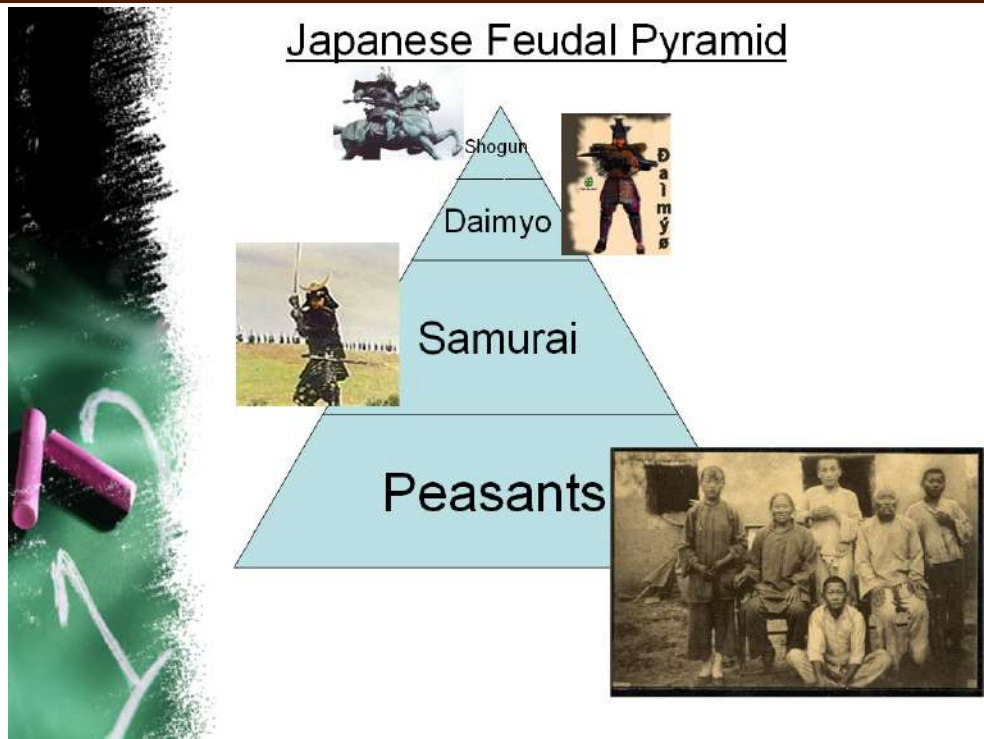
**What do  
students  
often  
say?**

# JAPANESE FEUDAL PYRAMID

- Can it be compared to Europe's during the Middle Ages?



Oh,  
that's  
right...



# Japanese Feudal Pyramid



Daimyō



Daimyō

Shogun



Samurai

Peasants





# Japanese Feudal Pyramid

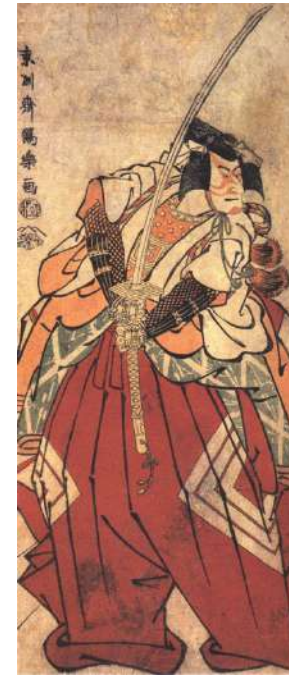
- Shogun = military and political leader of Japan; “great general”
- Daimyo = high-ranking samurai lords who provided the shogun with warriors in exchange for land
- Samurai = lower-ranking warriors who served their daimyo in exchange for small manors
- Peasants = lowest class; most taxed; worked the land for their lord.

# Comparing and Contrasting Feudal Japan and Feudal Europe

Europe



JAPAN



# Compare and Contrast

Area:	Feudal Europe	Feudal Japan
Armor	Chain mail (links,) heavy plates of steel	Iron, leather, and silk held together with leather straps
Styles of battle	Most knights on foot, some on horses	Most samurai on foot, some on horses
Weapons	Sword, mace, bow and arrow, etc	Sword mainly; some bamboo guns
Codes of Honor	<i>"Chivalry"</i> (courtesy, protecting serfs, loyalty to lord)	<i>"Bushido"</i> (give life to protect daimyo, set good examples)

**Make six boxes down...**

# Compare and Contrast

Area:	Feudal Europe	Feudal Japan
Literacy	Latin; Clergy were literate, most others were not	Japanese; Shoguns forced most Samurai to learn
Why did Feudalism die here?	Died around 1400. People moved off manors and into growing towns	Died in late 1800s. Shoguns adopted new technologies; Samurais were no longer needed



# Rise of the Shogun

- Question: What was Japan like before Shoguns?
  - From 800-1100AD, mostly peaceful and stable, and refined
  - Buddhism encouraged, (2 types)
  - Few other clans were allowed to share power
  - Emperor most powerful



*Japanese Buddhist Temple*

# Question: Why did the Shoguns rise?

By 1150, there was...

- The leading clan became corrupt
  - Wars broke out between competing clans.
  - By 1185, after many exhausting wars, one leader, Yoritomo Minamoto, proved most powerful and became 1st Shogun
  - Emperors became just figureheads



A cartoon Shogun



Yoritomo, 1<sup>st</sup> Shogun

# Shoguns still have influence in Japanese culture today...



images copyright 2002, go-boom.com