



UNIVERSITY *of* MARYLAND  
CAPITAL REGION HEALTH

***University of Maryland  
Capital Region Health Update***

***Prince George's County Council Retreat  
January 8, 2019***

# *UM Capital Region Health - Presenters*



Sherry B. Perkins, PhD, RN, FAAN  
President & Chief Executive Officer  
UM Capital Region Health



Joseph Wright, MD, MPH, FAAP  
Senior Vice President & Chief Medical Officer  
UM Capital Region Health



Tiffany Sullivan, MPH  
Senior Vice President, Clinical Integration & Ambulatory Services  
UM Capital Region Health

- **University of Maryland Medical System (UMMS):**
  - Affiliation
  - Synergies
- **UM Capital Region Health:**
  - Who We Are
  - Programs
  - Campus Development
- **Commitment to Population Health:**
  - Community Health Needs
  - Primary Care Alignment

*July 21, 2011*

## **PRINCE GEORGE'S COUNTY HEALTH CARE SYSTEM**

### **Summary of Memorandum of Understanding**

The Memorandum of Understanding lays out an 18-month, three-step process to develop the strategy, financing, and execution of a plan for UMMS to build a new regional teaching medical center and improve the County's primary care system, and for the University of Maryland Baltimore to establish a health sciences campus in conjunction with the new hospital. Signatories are Governor Martin O'Malley, County Executive Rushern Baker, County Council Chair Ingrid Turner, UMMS CEO Robert Chrencik,

# The University of Maryland Medical System

HOSPITALS
<b>Academic Medical Center</b>
University of Maryland Medical Center
<b>Nine Community Hospitals and One Freestanding Medical Facility</b>
University of Maryland Medical Center Midtown Campus
University of Maryland Baltimore Washington Medical Center
University of Maryland Shore Medical Center at Easton
University of Maryland Shore Medical Center at Dorchester
University of Maryland Shore Medical Center at Chestertown
University of Maryland Charles Regional Medical Center
University of Maryland St. Joseph Medical Center
University of Maryland Upper Chesapeake Medical Center
University of Maryland Harford Memorial Hospital
University of Maryland Prince George's Hospital Center
University of Maryland Laurel Medical Center
<b>Two Specialty Hospitals</b>
University of Maryland Rehabilitation and Orthopaedic Institute
Mt. Washington Pediatric Hospital*

EMPLOYED PROVIDERS
<b>University of Maryland Community Medical Group</b>
<ul style="list-style-type: none"> <li>• 550 Physicians</li> <li>• 250 Advanced Practiced Providers</li> </ul>

HEALTH PLANS**
University of Maryland Health Advantage (Medicare HMO)
Riverside Health (Medicaid MCO)

**\*\*Acquisition of Riverside Health in August 2015**

**\* - 50/50 Venture with Johns Hopkins Medicine**

# *UM School of Medicine Partnership*

- The School of Medicine supports the training of residents and fellows (clinical and research) at University of Maryland Medical Center and other Maryland hospitals.
- These residents and fellows are a key source of Maryland's future physician workforce.
- The School of Medicine faculty work collaboratively in support of the development of clinical programs and the growth of community hospital medical staffs.
- The quality and size of the faculty, students and trainees continues to grow:

• <b>School of Medicine Total Students</b>	<b>1,275</b>
• <b>Residents and Clinical and Research Fellows</b>	<b>1,208</b>
• <b>Faculty (full-time, part-time and adjunct)</b>	<b>2,905</b>

# *UMMS and UM Capital Region Health Affiliation*

## *September 1, 2017*

On September 1, 2017, University of Maryland Capital Region health became the newest affiliate of University of Maryland Medical System (UMMS).

We are now better positioned to meet the health care needs of the people in Prince George's County and surrounding areas.



# Improving Care Delivery

Our new regional health care delivery system will improve health of our population while improving care delivery effectiveness:

**Improve access**

**Improve access** for primary / community care, specialty care, and other health care services to the region to reduce health care disparities **and improve health status.**

**Strengthen / coordinate care continuum**

Help **strengthen / coordinate care continuum**-from primary / community care through post-acute care.

**Ability to invest**

**Ability to Invest** in ambulatory-based **clinics** and other health education programs **to manage chronic diseases.**

**Integrate University teaching and research**

**Integrate University-based teaching and research** in a new approach to care for the region.





*University of Maryland Capital Region Health:  
Who We Are*

# *UM Capital Region Health*



UM Prince George's Hospital Center



UM Laurel Medical Center



UM Bowie Health Center



UM Capital Region Medical Group

# University of Maryland Capital Region Health Leadership



Sherry B. Perkins, PhD, RN,  
FAAN  
President  
& Chief Executive Officer



Tiffany Sullivan, MPH  
Senior Vice President,  
Clinical Integration &  
Ambulatory Services



Veronica Ford, MSA, SPHR  
Vice President,  
Human Resources



Joseph L. Wright, MD, MPH,  
FAAP  
Senior Vice President &  
Chief Medical Officer



Katie Boston-Leary  
MHA, MBA, RN  
Chief Nursing Officer



Min Godwin, MBA, MA  
Vice President &  
Information Technology  
Site Executive



Trudy Hall, MD  
Vice President Medical  
Affairs, UMLMC  
Interim President, UMLMC



Dee Butler, Pharm.D  
Vice President, Clinical &  
Support Services



Jeffrey L. Johnson, MBA, FACHE  
Senior  
Vice President, Strategic  
Planning & Business Development



Ronald Laxton, DNP, RN  
Senior Vice President,  
Clinical Services &  
Chief Nurse Executive



Michael Jacobs, Esq.  
Vice President,  
Community Relations



Lynda Dorman, MBA, MIM  
Vice President,  
Office of Philanthropy



Ingrid Connerney  
DrPH, RN, CPPS, CJCP  
Vice President & Chief  
Quality Officer



Bill Brosius  
Chief Financial Officer

## FY18 By The Numbers

### Revenue & Grants

**\$413,143,000**



### Beds

Total Licensed Beds: 367



### Patient Care

Total Admissions: 15,900  
Total Emergency Visits: 106,550  
Total Surgeries: 10,690  
Total Newborn Deliveries: 1,293



### Staff

Total Privileged Physicians: 834  
Total Employees: 2,600



# *University of Maryland Capital Region Health: Clinical Programs*

- Cardiac Surgery
- Trauma
- Orthopedic Surgery
- Emergency Medicine
- Cardiac Anesthesiology
- Critical Care
- Vascular Surgery
- Thoracic Surgery
- Neonatology



*“Working in partnership with community physicians to  
provide exceptional care”*

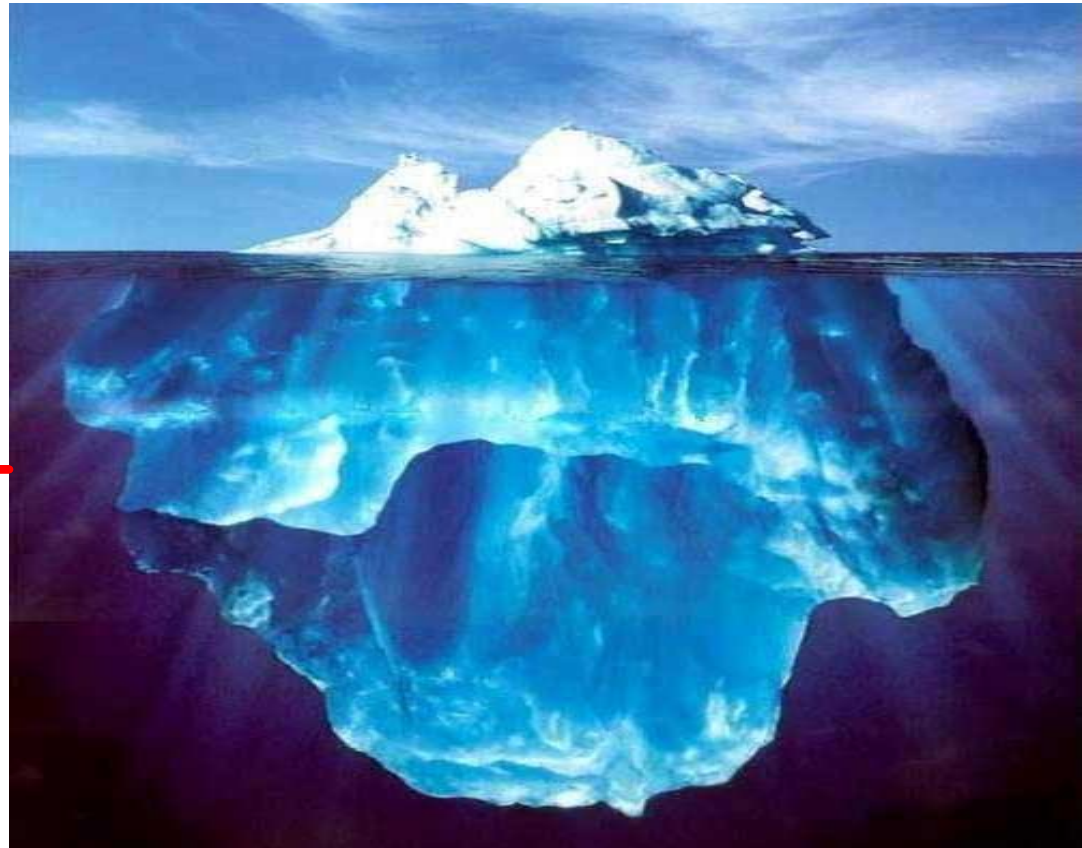
## *Demonstrating Success With Award Winning Care*

- Certified and designated as a Primary Stroke Center by The Joint Commission and by the Maryland Institute for Emergency Medical Services Systems.
- The only Level II Trauma center in the County with exceptional survival rate through team based trauma care; second busiest trauma center in Maryland.
- MIEMSS-designated Level III Neonatal Intensive Care Unit.
- The only designated Sexual Assault Center in Prince George's County; state leader in comprehensive domestic violence and sexual assault intervention.
- Wound Care & Hyperbaric Medicine Center is designated as a Center of Excellence for wound care by Healogics, the largest provider of advanced wound care services in the United States.
- UM Bowie Health Center Emergency Department is recognized by HCAHPS for ranking the top 10% nationally for patient satisfaction.

*Capital Region Health Award Winning Cardiac Surgery Program:  
300 Procedures, however, significant unmet need...*

*Expected Minimum  
Utilization based on  
County Disease Burden:*

- 588 CABG
- 360 Valve procedures
- 100 Thoracic Aorta
- 900 Major Vascular



...just the tip of the cardiovascular disease prevention iceberg

## *Continuing Our Efforts To Improve Access To Primary Care*

- Current plans to expand primary care in several areas of County including:
  - Laurel
  - Bowie
  - National Harbor
- Currently studying opportunities to expands primary care in other areas of the County where access is limited.
- Establishing a stronger, more accessible primary care network is a high priority for UM Capital Region Health.



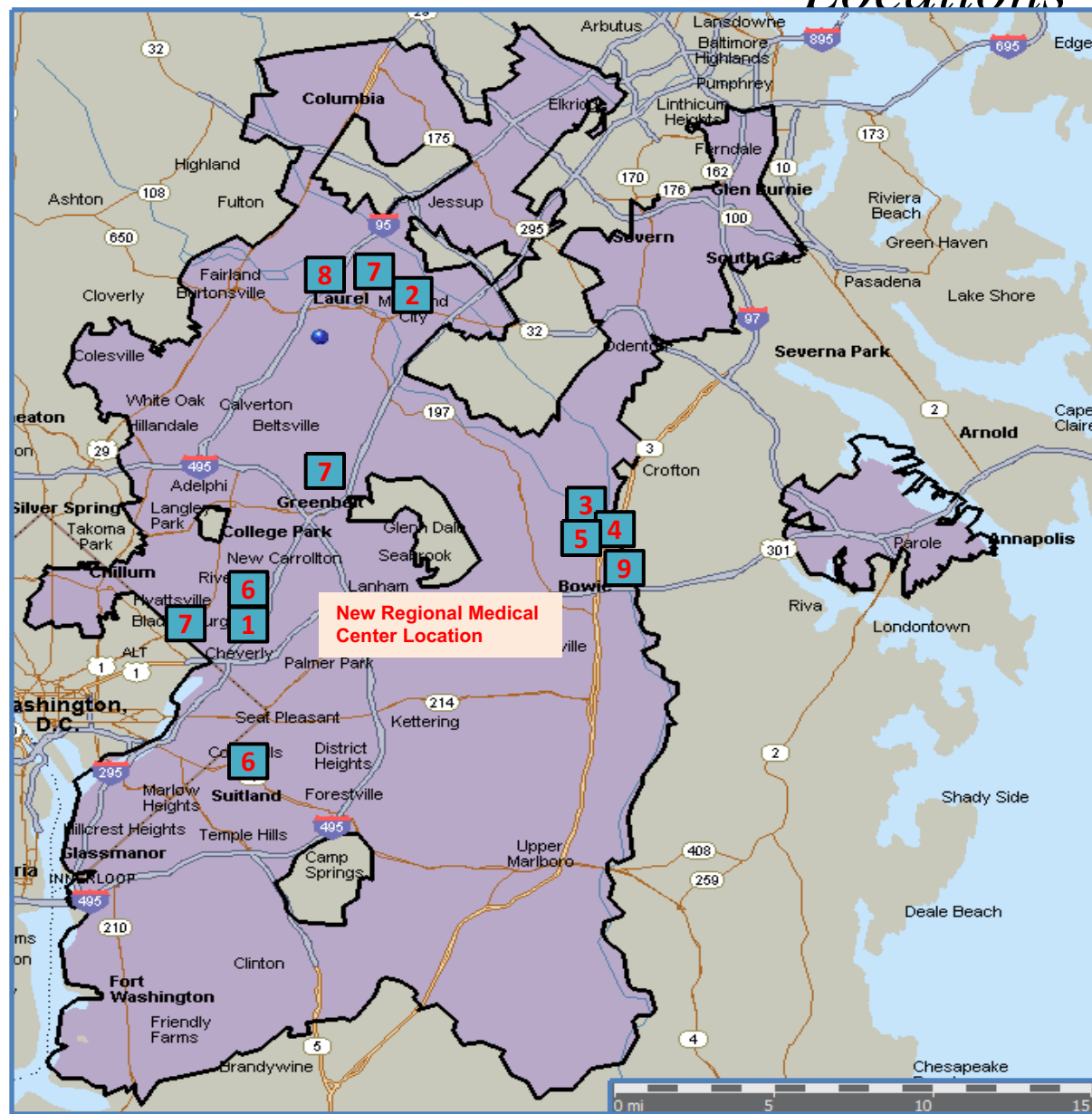
*UM Capital Physician Practice Development  
and Facility Investments Around Our  
Campuses*

# UM Capital Region Health Service Area & Facility Locations

## Map Key

- 1** UM Prince George's Hospital Ctr.
- 2** UM Laurel Medical Center
- 3** UM Bowie Health Center (Freestanding ED)
- 4** UM Capital Region Surgery Center (Freestanding ASC)
- 5** Larkin Chase Center - Skilled Nursing Facility (JV with Genesis Eldercare)
- 6** UM Family Health & Wellness Centers
- 7** Other physician/ambulatory sites
- 8** Wound Care Center
- 9** Mullikin Medical Office Building

*Shaded portion of map represents ZIP Codes where 85% of UM Capital inpatient admissions originate from*



# *UM Capital Region Health Medical Group*

## **Patient Visits**

34,000 in FY2018

## **Primary & specialty practice sites located in:**

- Cheverly
- Bowie
- Brentwood (Senior Health Center)
- Suitland
- Capitol Heights
- Laurel
- Greenbelt

## **Services offered include:**

- Family Medicine
- Internal Medicine
- Gastroenterology
- Maternal Fetal Medicine
- Geriatric Medicine
- Obstetrics / Gynecology
- General Dentistry
- Plastic Surgery
- Infectious Disease
- Pulmonary Medicine

# *New Campus At The National Harbor*

- Primary and specialty care practices opening in summer, 2019
- Practices include:
  - Primary Care
  - Gynecological Care
  - General Surgery
  - Bariatric Surgery
  - Cardiology
  - Plastic Surgery
  - Other Specialties Planned



## *Bowie Campus Activities*



- UM Capital plans to add and/or expand physician services including:
  - Primary Care
  - Gynecological care
  - General & Bariatric Surgery
  - Ear, Nose and Throat
  - Plastic Surgery
- Plan to renovate several suites in the Mullikin Medical Office Building
- Exterior improvements such as paving also being planned

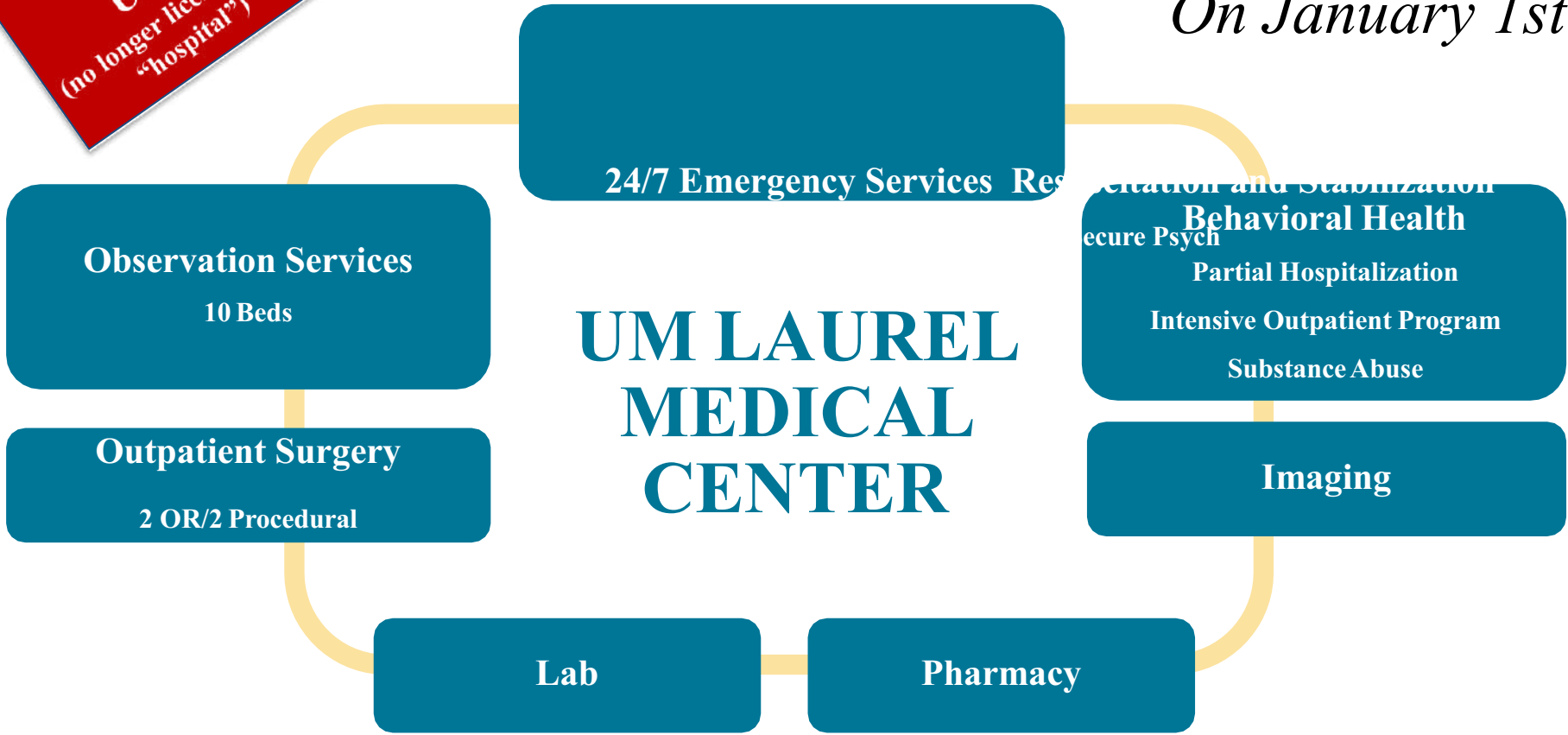


## *Bowie Campus Activities*



- Currently engaged with Cushman & Wakefield, a real estate advisory firm, to analyze future development potential of the current campus.
- UM Capital has interests in developing a second medical office building
- Physical attributes of current campus may prevent further expansion. Expansion in the Bowie marketplace may occur in another location. A feasibility study is currently in process.

*UM Laurel Regional Hospital  
Transitioned to UM Laurel Medical Center  
On January 1st*



New facility under design which will represent a \$50 million UMMS investment in the Laurel community in addition to anticipated private investment in the surrounding medical campus.

# *Proposed New University of Maryland Laurel Medical Center*





# Laurel Health Campus Conceptual Site Study



# *University of Maryland Capital Region Medical Center*

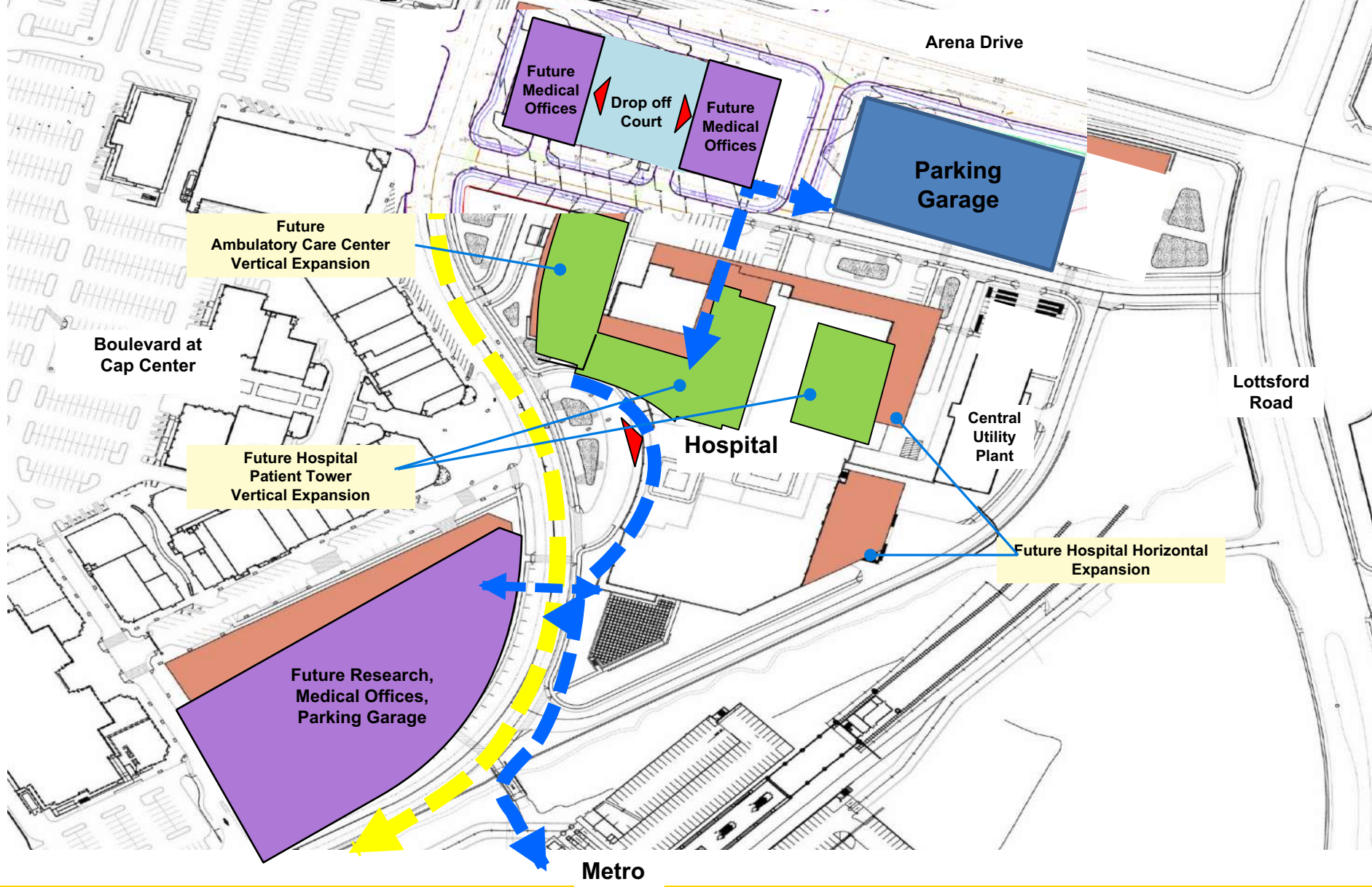
- +/- 600,000 SF
- 205 Private Inpatient Rooms
- Emergency Department
- Short Stay Unit
- Trauma Services
- 8 Operating Rooms
- Pre & Post-Op Care
- Intensive Care Unit
- Intermediate Care Unit
- Inpatient Medical/Surgical Care
- Behavioral Health Unit
- Mt. Washington Pediatric Unit
- Women's Services
- Mother & Baby Program
- Neonatal Intensive Care Unit
- Academic Residency Program



**Scheduled To Open April 2021**



# UM Capital Region Medical Center Site Plan





Main Lobby





Patient Room



Site





Front Entrance



Exterior Garage Concourse



# *Project Milestone Schedule*

<u>Milestone</u>	<u>Expected Completion</u>	<u>Actual</u>
• Excavation and Foundations	August 2018	August 18, 2018
• Structure Top Out	May 2019	
• Central Utility Building Operational	December 2019	
• Building Skin Fully Enclosed	January 2020	
• Interior Fit-Out Complete	October 2020	
• All Construction Complete	December 2020	
• Grand Opening	April 2021	

# *Prince George's County Minority Business Owners Plan*

<b><u>CATEGORY</u></b>	<b><u>GOAL</u></b>	<b><u>PROJECTED</u></b>
Goal 1: CMBE/MBE/CBB/CLB	35% Goal	75%
Goal 2: CMBE/MBE/CBB/CLB	25% MIN	75%
Goal 3: CMBE/MBE/CLB	15% MIN	62%
Goal 4: CMBE	10%-15%	12%

# *Economic Impact of the UM Capital Region Medical Center*

According to a study completed by The Battelle Technology Partnership Practice:

- The UM Capital Region Medical Center activities will generate \$397.0 million in economic activity in Prince George's County, support 2,641 workers earning \$176.0 million in salaries and wages, and generate \$15.5 million in combined State and local taxes.
- When the Regional Medical Center is combined with the remaining development potential in the project, at build out, the combined project will support nearly \$0.8 billion in economic activity, support 6,113 jobs earning \$355.1 million in labor income, and support \$38.0 million in combined state and local government revenues.

# Community Health Needs



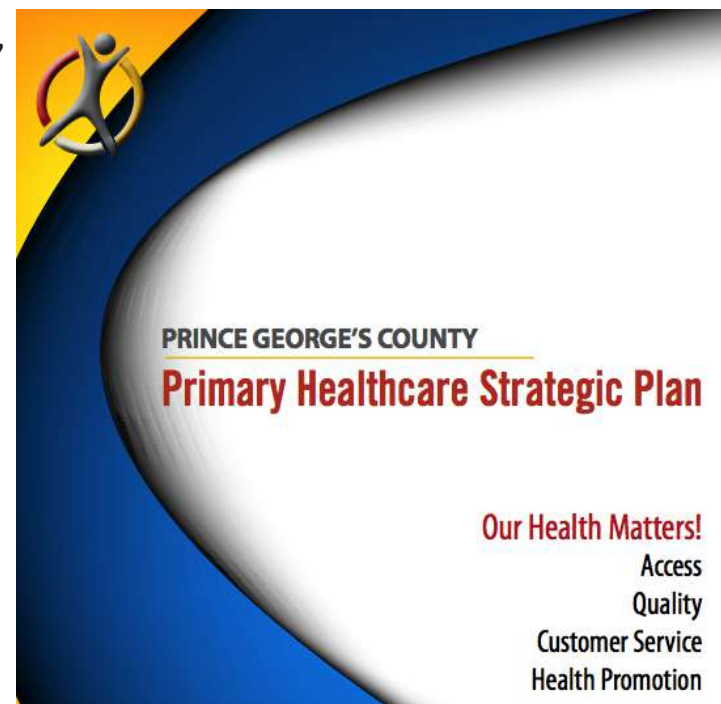
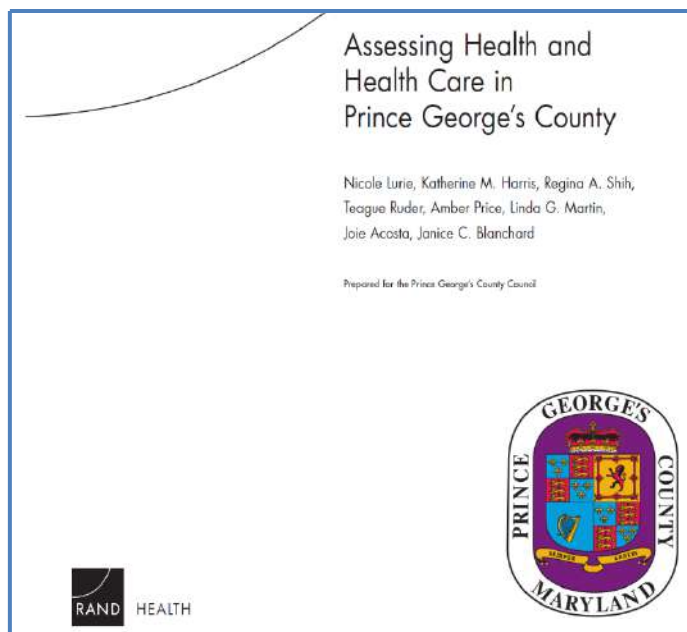
**COMMUNITY**  
HEALTH NEEDS ASSESSMENT

Prepared by:  
Prince George's County  
Health Department.

HEALTH DEPARTMENT  
Prince George's County

# Primary Healthcare Strategic Plan for Tomorrow

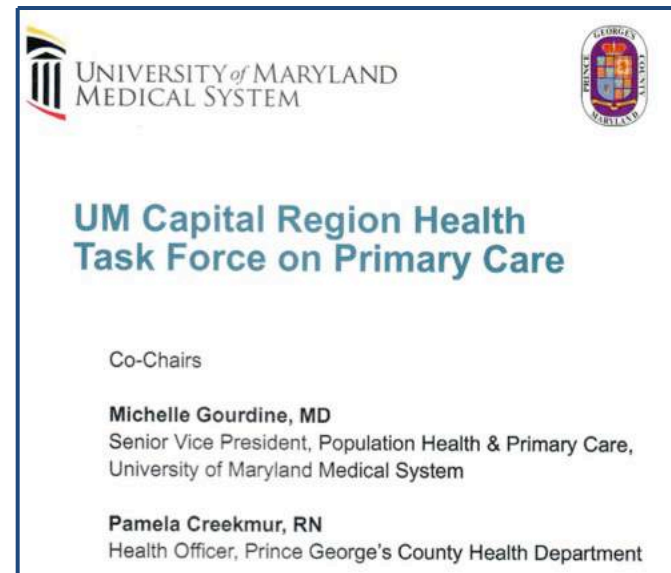
For decades, Prince George's County, Maryland, has been grappling with the challenge of enhancing its healthcare delivery network. From hospitals to health clinics, Prince Georgians and other Marylanders living in the southern region of the state have been limited in their access to healthcare. According to a 2009 RAND Corporation report, it was critical that the County take strong and decisive action to improve access to quality healthcare. The County Council was the catalyst for the RAND report, which served as a basis to garner the support of other partners—state government, the University of Maryland Medical System,





# *Continuing Our Efforts To Improve Access To Primary Care*

- Taking into consideration the findings of the County's Primary Care study, UM Capital and UMMS engaged a *Task Force On Primary Care* to develop a strategic plan to address the health disparities and insufficient primary care resources.
  - Co-chaired by Pamela Creekmur, RN and Michelle Gourdine, MD
  - Membership comprised of experts from across the County and State
  - Five Strategic Work Groups:
    - Multidisciplinary Team Composition
    - Integrated Care Models
    - Strategic Partnerships
    - Ambulatory Behavioral Health
    - Workforce Development

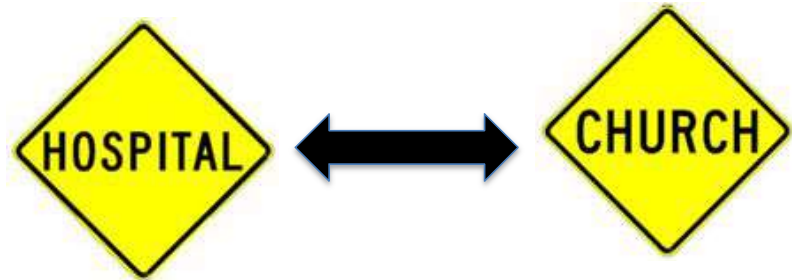


## *UM Capital Region Health Task Force on Primary Care*

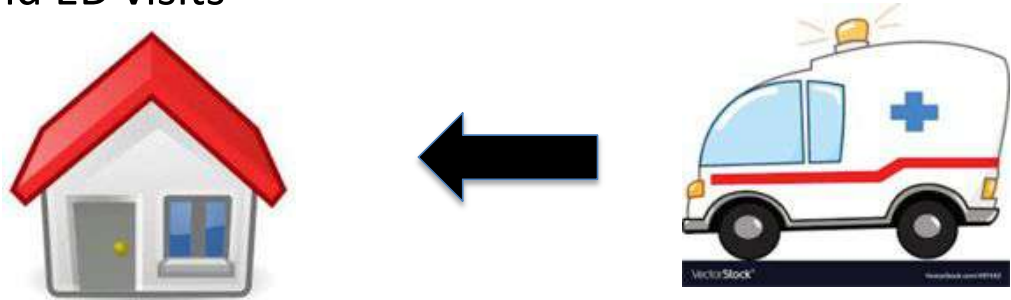
- **Build adequate supply of high quality primary care access points through strategic partnerships.**
- **Expand current pilot and innovative programs to manage transitions between settings of care.**
- **Provide transportation solutions to facilitate access and continuity of care.**
- **Expand behavioral health treatment options in all care settings.**
- **Build capacity of current and future primary care providers to deliver advanced primary care.**

# *Innovative Partnership Opportunities*

- Collaborate with the Maryland Faith Health Network to implement the Congregational Health Network Model
  - *Partnership between congregations and health care providers to outreach to high-risk patients*



- Expand Mobile Integrated Health Program to address health needs for high risk patients in their homes, and avoid ED visits





*Follow Us!*



**UMCapHealth**



**UMCapital**



**UMCapitalRegion**



**UM Capital Region Health**

Visit us: <https://umcapitalregion.org>