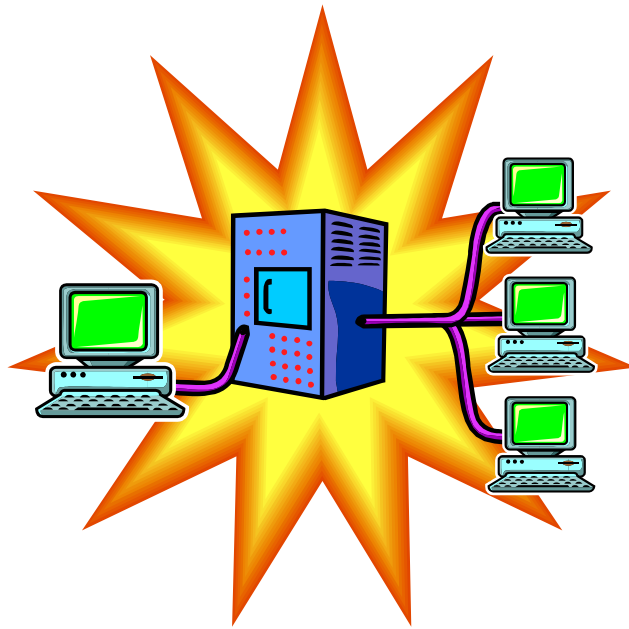


INFORMATION

TECHNOLOGY



Maryland Department of Labor, Licensing and Regulation
Division of Workforce Development
Office of Workforce Information and Performance
1100 N. Eutaw Street, Room 316
Baltimore, MD 21201

August 2006

Information Technology Cluster

What is included in the Information Technology Cluster?

“Information age” and “information economy” – are commonly heard expressions today, alluding to an era in which information is playing an increasingly important role. The reference is twofold: a recognition that a growing number of industries are in the business of producing, processing, or distributing information, as well as the notion that virtually all businesses are using information and information technology to operate more efficiently and productively. Individual consumers use information technology as well to gain knowledge, exchange ideas and opinions, and for entertainment and amusement. Information is now a high demand commodity—albeit a rather intangible one—and the technology to produce and disseminate it has become a driving force in the economy.

The Information Technology Cluster is comprised of industries that facilitate electronic information exchange at various stages of the process. This includes establishments that manufacture electronic computing and communications equipment; distributors of such goods; providers of computer systems and other information technology (IT) services; and establishments that repair IT equipment. This report groups these industries into the following divisions:

- ❑ ***Computer and Electronic Products Manufacturing*** includes establishments that produce or assemble IT equipment such as computers, wired and wireless communications devices and transmission equipment, AV entertainment products and magnetic and optical equipment, including software reproduction.

NAICS

- 3341** Computer and peripheral equipment manufacturing
- 3342** Communications equipment manufacturing
- 3343** Audio and video equipment manufacturing
- 3346** Magnetic and optical media manufacturing and reproducing

- ❑ ***IT Wholesale Distribution*** includes merchant wholesalers engaged in the distribution of computers and related goods and electronic parts and equipment such as communications, broadcasting, and radar equipment, blank diskettes or audio/video tapes. Business-to-business electronic markets which use the Internet or other electronic means to bring together buyers and sellers (for a commission or fee) to exchange all manner of goods are also included under this subsector.

NAICS

- 423430** Computers, peripheral equipment, and software merchant wholesalers
- 423690** Other electronic parts and equipment merchant wholesalers
- 425110** Business-to-business electronic markets

- **Information Technology Services** is comprised of establishments that develop and/or publish software and provide support services to users; businesses that publish and/or broadcast on the Internet (including sites for news, sports, radio, books, videos, and games); providers of Internet access and Web operation (which may include Web hosting, Web page design, e-mail service, and related assistance); providers of specialized hosting activities (including Web, streaming services, or application hosting); application service provisioning, and data processing; and other information services, such as news syndicates, libraries, and archives.

NAICS

- 5112** Software publishers
- 5161** Internet publishing and broadcasting
- 5181** Internet service providers and web search portals
- 5182** Data processing, hosting, and related services
- 5191** Other information services

- **Computer Systems Services** consists of establishments that provide computer systems expertise to clients on a contract or fee basis. Customized services may involve writing, testing, and supporting software to meet a client's needs; designing computer systems that integrate hardware, software, and communication technologies, often including installation, training, and support as part of the service; providing on-site management and operation of clients' computer systems and/or data processing facilities, or supplying support services for such facilities; and other computer related services such as software installation and computer disaster recovery.

NAICS

- 5415** Computer systems design and related services

- **Information Technology Equipment Repair and Maintenance** is comprised of businesses that repair and maintain IT office equipment. Computers, printers, CD-ROM drives, and photocopying machines are among the devices maintained.

NAICS

- 811212** Computer and office machine repair and maintenance

For additional descriptive information on NAICS, go to www.census.gov/epcd/naics02/

This publication was developed using data from the Quarterly Census of Employment and Wages (ES 202) and from the Occupational Employment Statistics (OES) Programs.

Maryland
Employment and Wages in the Information Technology Cluster Industries
2002 and 2005

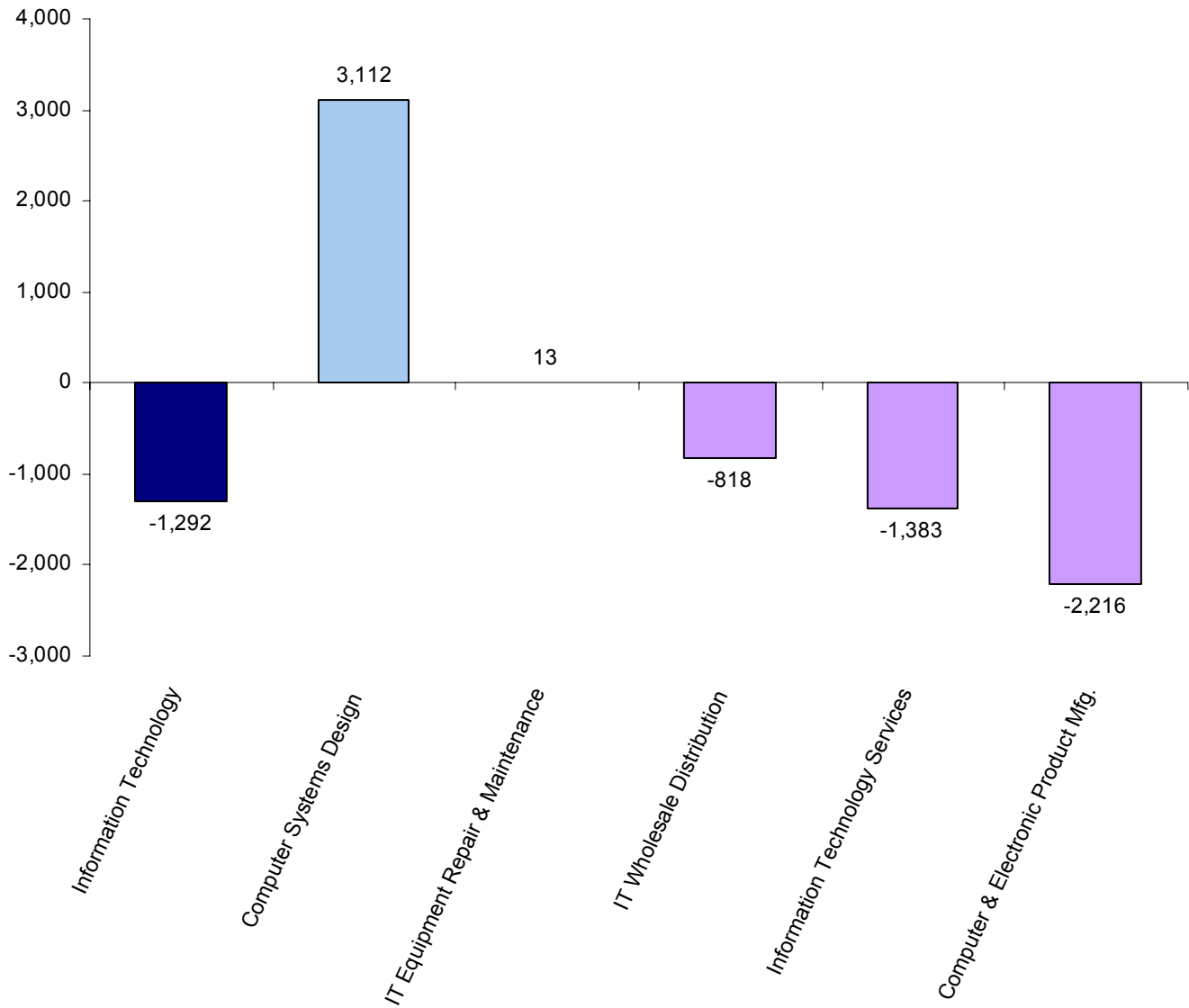
| NAICS | Industry Description | Employment | | Payroll | | Average Weekly Wage 2005 | Industry Share of Cluster |
|--------|---|---------------|---------------|----------------------|----------------------|--------------------------|---------------------------|
| | | 2002 | 2005 | 2002 | 2005 | | |
| | Information Technology | 90,856 | 89,564 | 6,697,648,817 | 7,216,116,727 | \$1,549 | 100.0 |
| | Computer & Electronic Product Mfg. | 11,424 | 9,208 | 948,600,612 | 899,817,696 | 1,879 | 10.3 |
| 3341 | Computer & peripheral equipment mfg. | 847 | 990 | 58,135,276 | 118,933,530 | 2,310 | 1.1 |
| 3342 | Communications equipment mfg. | 7,801 | 5,671 | 588,984,341 | 495,783,856 | 1,681 | 6.3 |
| 3343 | Audio & video equipment mfg. | 124 | 116 | 8,860,692 | 8,298,920 | 1,376 | 0.1 |
| 3346 | Magnetic media mfg. & reproducing | 2,652 | 2,431 | 292,620,303 | 276,801,390 | 2,190 | 2.7 |
| | IT Wholesale Distribution | 12,629 | 11,811 | 1,035,679,369 | 1,058,220,232 | 1,723 | 13.2 |
| 423430 | Computer & software merchant wholesalers | 6,606 | 5,908 | 620,417,360 | 606,613,064 | 1,975 | 6.6 |
| 423690 | Other electronic parts merchant wholesalers | 4,640 | 4,609 | 328,977,621 | 371,801,587 | 1,551 | 5.1 |
| 425110 | Business to business electronic markets | 1,383 | 1,294 | 86,284,388 | 79,805,581 | 1,186 | 1.4 |
| | Information Technology Services | 15,156 | 13,773 | 806,833,813 | 759,669,675 | 1,061 | 15.3 |
| 5112 | Software publishers | 1,997 | 1,652 | 174,290,290 | 152,689,417 | 1,777 | 1.8 |
| 5161 | Internet publishing & broadcasting | 743 | 628 | 48,665,208 | 46,408,542 | 1,421 | 0.7 |
| 5181 | ISPs & web search portals | 1,848 | 1,958 | 121,672,682 | 147,632,565 | 1,450 | 2.2 |
| 5182 | Data processing & related services | 6,589 | 5,284 | 365,315,447 | 296,136,818 | 1,078 | 5.9 |
| 5191 | Other information services | 3,979 | 4,251 | 96,890,186 | 116,802,333 | 528 | 4.7 |
| | Computer Systems Services | 50,952 | 54,064 | 3,874,638,356 | 4,459,003,137 | 1,586 | 60.4 |
| 5415 | Computer systems design & related svcs. | 50,952 | 54,064 | 3,874,638,356 | 4,459,003,137 | 1,586 | 60.4 |
| | IT Equipment Repair & Maintenance | 695 | 708 | 31,896,667 | 39,405,987 | 1,070 | 0.8 |
| 811212 | Computer & office machine repair | 695 | 708 | 31,896,667 | 39,405,987 | 1,070 | 0.8 |

- Dotcom layoffs and the subsequent economic slowdown which impacted performance throughout Maryland's economy in the early part of the decade clearly affected employment levels in the IT Cluster. Employment in the Cluster fell by about 5.6% between 2001 and 2002. Downsizing, affecting nearly every industry within the Cluster, continued through 2003, however, the rate of decline slowed considerably. Beginning in 2004 and into 2005, a turnaround was in the making, with growth, albeit slow, adding about 730 jobs to industry payrolls between 2003 and 2005.
- Although Montgomery and Prince George's counties, combined, held about 52% of all Cluster employment in 2005, the loss of just over 5,500 jobs diminished this concentration from that of 57% in 2002. With the exception of Garrett County, the remaining Maryland jurisdictions reported expansion in IT employment through 2005. Some of the most noteworthy gains occurred in Baltimore County, Anne Arundel County and Baltimore City.
- Employment in the Cluster is clearly dominated by firms providing computer systems design and related services, a subsector responsible for about 6 out of every 10 IT industry jobs. Employment in computer design firms has expanded without interruption since 2002, making this one of the only Cluster subsectors to turn in a positive performance over the 2002-2005 period.
- Average weekly earnings in the IT Cluster, at \$1549 in 2005, were about 82% higher than the average of \$853 paid to workers in all industries. Weekly wages of \$2,310 paid in computer & peripheral equipment manufacturing and those of \$2,190 paid in magnetic media manufacturing/reproducing were the highest in a ranking of individual IT industries.

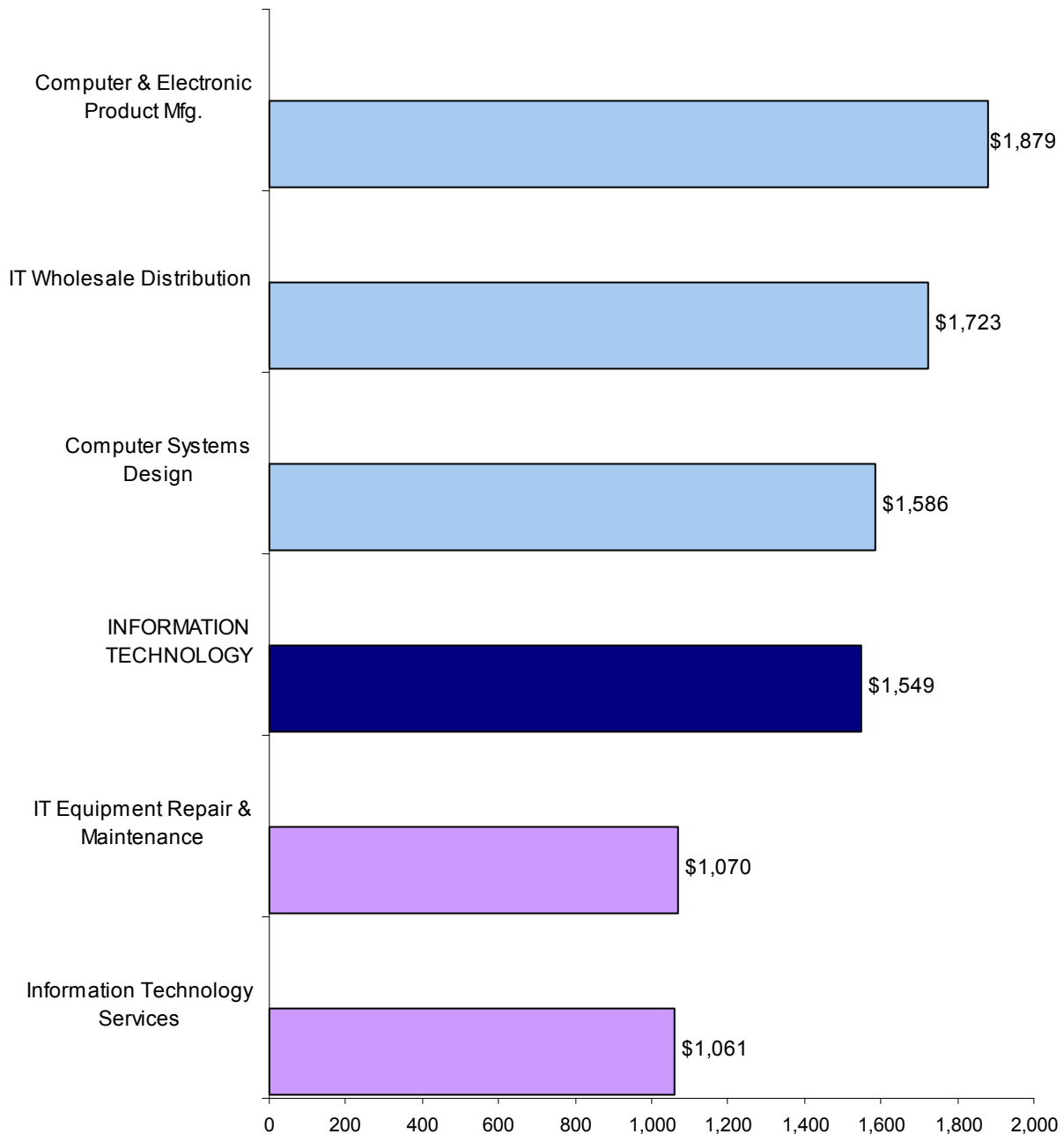
Maryland
Employment in the Information Technology Cluster Industries
2001 - 2005

| NAICS | Industry Description | Employment | | | | |
|--|---|----------------|-----------------------|-----------------------|-----------------------|-----------------------|
| | | 2001 | 2002 | 2003 | 2004 | 2005 |
| | Information Technology | 96,222 | 90,856 | 88,833 | 89,150 | 89,564 |
| | Computer & Electronic Product Mfg. | 13,096 | 11,424 | 10,023 | 9,732 | 9,208 |
| 3341 | Computer & peripheral equipment mfg. | 870 | 847 | 809 | 901 | 990 |
| 3342 | Communications equipment mfg. | 9,233 | 7,801 | 6,608 | 6,197 | 5,671 |
| 3343 | Audio & video equipment mfg. | 128 | 124 | 115 | 115 | 116 |
| 3346 | Magnetic media mfg. & reproducing | 2,865 | 2,652 | 2,491 | 2,519 | 2,431 |
| | IT Wholesale Distribution | 13,473 | 12,629 | 11,929 | 11,698 | 11,811 |
| 423430 | Computer & software merchant wholesalers | 7,245 | 6,606 | 6,222 | 6,025 | 5,908 |
| 423690 | Other electronic parts merchant wholesalers | 4,792 | 4,640 | 4,375 | 4,357 | 4,609 |
| 425110 | Business to business electronic markets | 1,436 | 1,383 | 1,332 | 1,316 | 1,294 |
| | Information Technology Services | 16,159 | 15,156 | 14,660 | 14,003 | 13,773 |
| 5112 | Software publishers | 2,139 | 1,997 | 1,930 | 1,515 | 1,652 |
| 5161 | Internet publishing & broadcasting | 766 | 743 | 749 | 675 | 628 |
| 5181 | ISPs & web search portals | 2,119 | 1,848 | 1,682 | 1,846 | 1,958 |
| 5182 | Data processing & related services | 6,933 | 6,589 | 6,220 | 5,832 | 5,284 |
| 5191 | Other information services | 4,202 | 3,979 | 4,079 | 4,135 | 4,251 |
| | Computer Systems Services | 52,825 | 50,952 | 51,507 | 52,995 | 54,064 |
| 5415 | Computer systems design & related svcs. | 52,825 | 50,952 | 51,507 | 52,955 | 54,064 |
| | IT Equipment Repair & Maintenance | 669 | 695 | 714 | 722 | 708 |
| 811212 | Computer & office machine repair | 669 | 695 | 714 | 722 | 708 |
| | | | | | | |
| Information Technology Cluster Employment Changes | | Change | 2001- 2002 | 2002- 2003 | 2003- 2004 | 2004- 2005 |
| | | Number | -5,366 | -2,023 | 317 | 414 |
| | | Percent | -5.6% | -2.2% | 0.4% | -0.5% |
| | | | | | | |

Maryland
Employment Changes in the Information Technology Industry Subsectors
2002 - 2005

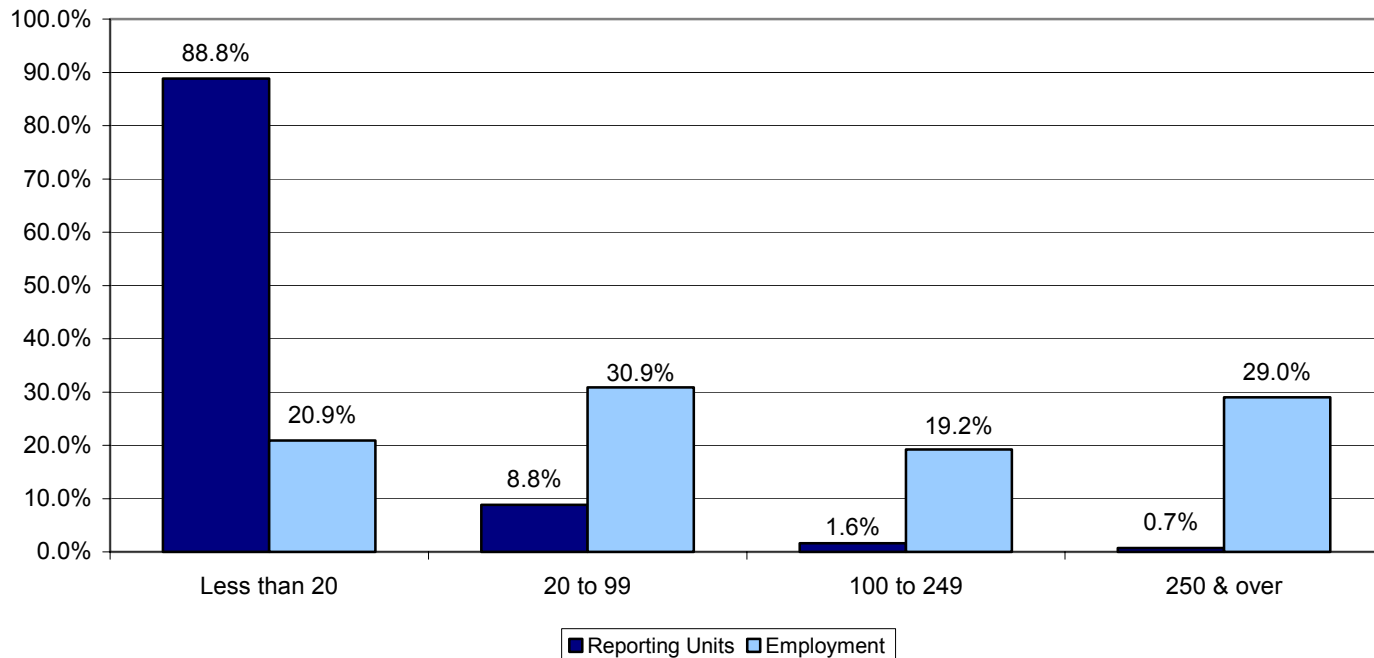


Maryland
Wages in the Information Technology Cluster Industry Subsectors
2005



**Reporting Units and Employment Concentration in the Information Technology Cluster
by Size Class ***

Based on 4th Quarter 2005 Average Employment



| Information Technology Cluster Percent of Total | Reporting Units | | | | Employment | | | |
|---|-----------------|----------|------------|------------|--------------|----------|------------|------------|
| | Less than 20 | 20 to 99 | 100 to 249 | 250 & over | Less than 20 | 20 to 99 | 100 to 249 | 250 & over |
| | 6,547 | 649 | 119 | 55 | 18,915 | 27,935 | 17,365 | 26,275 |
| | 88.8% | 8.8% | 1.6% | 0.7% | 20.9% | 30.9% | 19.2% | 29.0% |

- About 7,370 establishments made up the Information Technology Cluster during the 4th quarter of 2005. Nearly 9 out of every 10 businesses in the cluster were categorized as small employers, employing fewer than 20 workers. The highest density of small businesses were classified as computer systems design firms.
- While about 70% of all computer design firms were characterized as small employers, the highest share -- 32.3% -- of this industry's employment was found in mid-sized establishments employing 20-99 workers.
- Within the cluster, mid-sized (20-99 workers) and large establishments (250 or more workers), while accounting for less than 10% of all business locations, employed the majority -- about 60% -- of the cluster's workforce.
- When looking at the cluster's subsectors, the concentration of workers among computer/electronic manufacturers and IT wholesalers is highest in the 250 & over employment category; businesses engaged in information technology services, along with computer systems design firms, have their highest worker concentration in the 20-99 size grouping while the highest share of jobs in IT equipment repair and maintenance businesses is in the smallest (less than 20) size class category.

* Includes establishments in all Information Technology NAICS industries that cannot be distributed geographically.

Maryland
Occupational Staffing in the Information Technology Cluster

| Occupational Code | Occupation | % of Total Info Tech Employment |
|--------------------------|--|--|
| 15-1032 | Computer Software Engineers, Systems Software | 8.02 |
| 15-1031 | Computer Software Engineers, Applications | 6.91 |
| 41-4012 | Sales Reps., WT & Mfg., exc. Technical & Sci. Products | 5.24 |
| 15-1041 | Computer Support Specialists | 5.08 |
| 15-1051 | Computer Systems Analysts | 4.18 |
| 15-1021 | Computer Programmers | 3.70 |
| 11-1021 | General & Operations Managers | 3.57 |
| 15-1071 | Network & Computer Systems Administrators | 2.95 |
| 15-1081 | Network Systems & Data Communications Analysts | 2.73 |
| 11-3021 | Computer & Information Systems Managers | 2.58 |
| 41-4011 | Sales Reps., WT & Mfg., Technical & Sci. Products | 2.44 |
| 43-4051 | Customer Service Representatives | 2.13 |
| 49-2011 | Computer, Automated Teller & Office Machine Repairers | 1.87 |
| 43-9061 | Office Clerks, General | 1.76 |
| 13-1111 | Management Analysts | 1.63 |
| 43-3031 | Bookkeeping, Accounting & Auditing Clerks | 1.61 |
| 17-2061 | Computer Hardware Engineers | 1.56 |
| 15-1061 | Database Administrators | 1.42 |
| 43-6011 | Executive Secretaries & Administrative Assistants | 1.38 |
| 13-2011 | Accountants & Auditors | 1.25 |
| 53-7062 | Laborers & Freight, Stock, Material Movers, Hand | 1.19 |
| 51-2092 | Team Assemblers | 1.13 |
| 43-1011 | First Line Supv./Mgrs., Office & Admin. Support Wkrs. | 1.02 |
| 43-9021 | Data Entry Keyers | 1.01 |
| 43-6014 | Secretaries, exc. Legal, Medical & Executive | 0.99 |
| 11-2022 | Sales Managers | 0.93 |
| 15-2011 | Computer & Information Scientists, Research | 0.91 |
| 43-5071 | Shipping, Receiving & Traffic Clerks | 0.90 |
| 15-2031 | Operations Research Analysts | 0.77 |

Just over 70% of employment in the Information Technology Cluster is in the above-referenced occupations. Employment concentration is highest in Computer & Mathematical occupations, a group which claims about 4 out of every 10 jobs in this grouping of top occupations. Office and Administrative Support occupations, the second largest job classification in this ranking, account for about 10% of the staffing.

Occupational Coding Legend

- 11 Management Occupations
- 13 Business & Finance Occupations
- 15 Computer & Mathematical Occupations
- 17 Architecture & Engineering Occupations
- 41 Sales & Related Occupations
- 43 Office & Administrative Support Occupations
- 49 Installation, Maintenance & Repair Occupations
- 51 Production Occupations
- 53 Transportation & Material Moving Occupations

Maryland
Occupational Demand, Training and Wages in the Information Technology Cluster

| Occupation | Annual Openings | | | Training Code | Median Annual Wage |
|--|-----------------|--------------|-------|---------------|--------------------|
| | Growth | Replacements | Total | | |
| Computer Software Engineers, Systems Software | 665 | 135 | 800 | 5 | \$92,700 |
| Computer Software Engineers, Applications | 495 | 110 | 605 | 5 | 81,200 |
| Sales Reps., WT & Mfg., exc. Technical & Scientific Products | 520 | 645 | 1,165 | 10 | 51,325 |
| Computer Support Specialists | 315 | 135 | 450 | 6 | 43,625 |
| Computer Systems Analysts | 485 | 230 | 715 | 5 | 79,075 |
| Computer Programmers | 180 | 305 | 485 | 5 | 67,675 |
| General & Operations Managers | 1,420 | 1,230 | 2,650 | 4 | 87,375 |
| Network & Computer Systems Administrators | 250 | 70 | 320 | 5 | 66,025 |
| Network Systems & Data Communications Analysts | 335 | 71 | 406 | 5 | 69,600 |
| Computer & Information Systems Managers | 295 | 155 | 450 | 4 | 104,675 |
| Sales Reps., WT & Mfg., Technical & Scientific Products | 150 | 145 | 295 | 10 | 57,850 |
| Customer Service Representatives | 735 | 485 | 1,220 | 10 | 30,500 |
| Computer, Automated Teller & Office Machine Repairers | 75 | 45 | 120 | 7 | 40,125 |
| Office Clerks, General | 695 | 1,165 | 1,860 | 11 | 26,100 |
| Management Analysts | 415 | 255 | 670 | 4 | 73,900 |
| Bookkeeping, Accounting & Auditing Clerks | 150 | 550 | 700 | 10 | 33,500 |
| Computer Hardware Engineers | 30 | 45 | 75 | 5 | 87,175 |
| Database Administrators | 100 | 25 | 125 | 5 | 66,600 |
| Executive Secretaries & Administrative Assistants | 400 | 580 | 980 | 10 | 39,500 |
| Accountants & Auditors | 300 | 365 | 665 | 5 | 55,300 |
| Laborers & Freight, Stock, Material Movers, Hand | 175 | 1,280 | 1,455 | 11 | 21,975 |
| Team Assemblers | 50 | 275 | 325 | 10 | 25,400 |
| First Line Supv./Mgrs., Office & Admin. Support Wkrs. | 290 | 620 | 910 | 8 | 45,025 |
| Data Entry Keyers | -25 | 160 | 160 | 10 | 25,250 |
| Secretaries, exc. Legal, Medical & Executive | 230 | 835 | 1,065 | 10 | 31,250 |
| Sales Managers | 280 | 155 | 435 | 4 | 90,050 |
| Computer & Information Scientists, Research | 50 | 25 | 75 | 2 | 93,450 |
| Shipping, Receiving & Traffic Clerks | 15 | 210 | 225 | 11 | 26,450 |
| Operations Research Analysts | 20 | 45 | 65 | 3 | 71,750 |

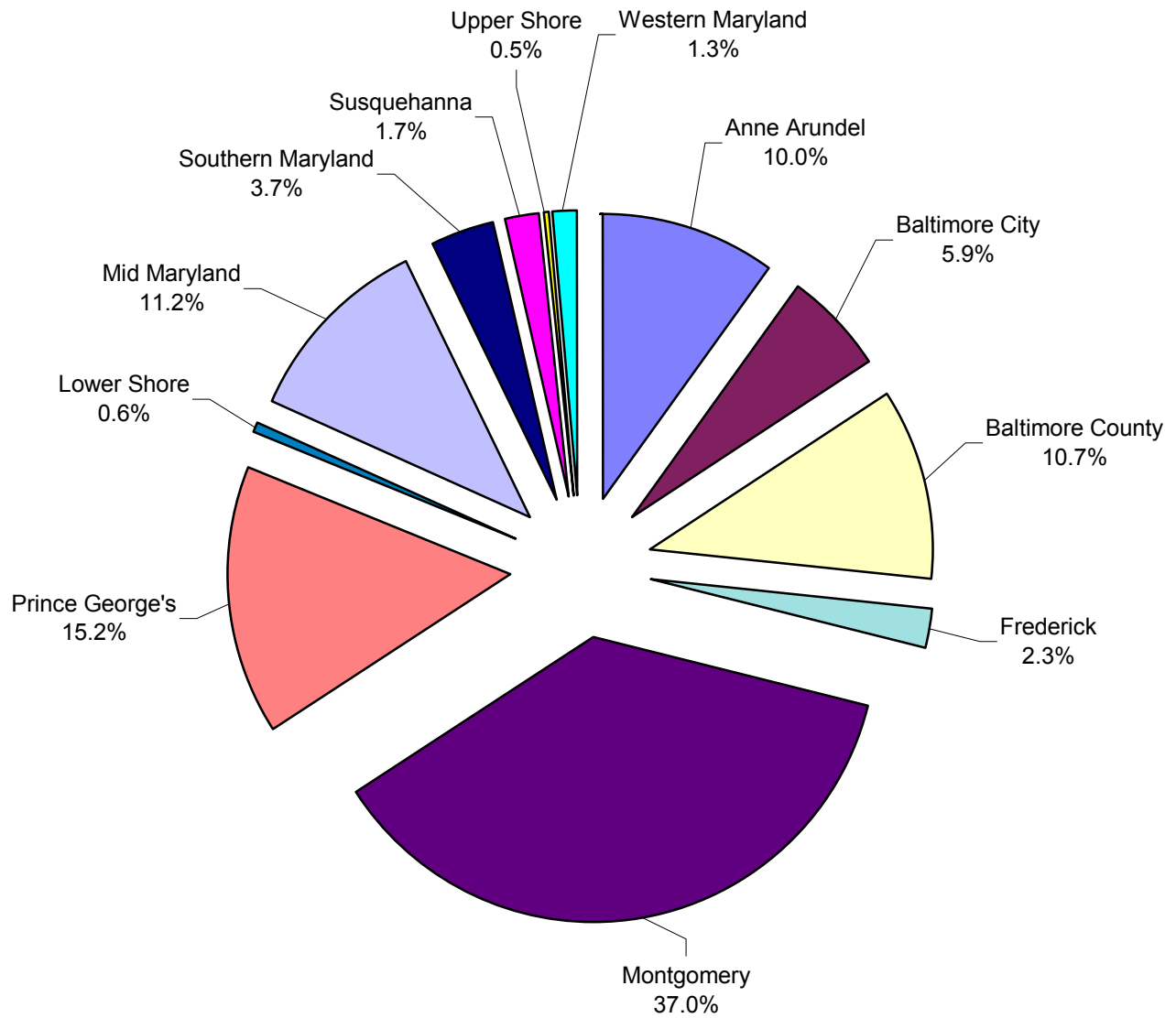
Data represents economy-wide demand for 2002-2012. Growth & replacements may not add to total due to rounding.
Wages adjusted to reflect inflationary pressures through March 2006.

Education and Training Categories

Occupations are classified into 1 of 11 categories by the Bureau of Labor Statistics based on analyses of the occupation's usual education and training requirements conducted while developing information to present in the *Occupational Outlook Handbook*. The 11 classifications are as follows:

- 1** ***First professional degree.*** Completion of the academic program usually requires at least 6 years of full-time equivalent academic study, including college study prior to entering the professional degree program.
- 2** ***Doctoral degree.*** Completion of the degree program usually requires at least 3 years of full-time equivalent academic work beyond the bachelor's degree.
- 3** ***Master's degree.*** Completion of the degree program usually requires 1 or 2 years of full-time equivalent study beyond the bachelor's degree.
- 4** ***Bachelor's or higher degree, plus work experience.*** Most occupations in this category are managerial occupations that require experience in a related nonmanagerial position.
- 5** ***Bachelor's degree.*** Completion of the degree program generally requires at least 4 years but not more than 5 years of full-time equivalent academic work.
- 6** ***Associate degree.*** Completion of the degree program usually requires at least 2 years of full-time equivalent academic study.
- 7** ***Postsecondary vocational award.*** Some programs last only a few weeks while others may last more than a year. In some occupations, a license is needed that requires passing an examination after completion of the training.
- 8** ***Work experience in a related occupation.*** Some occupations requiring work experience are supervisory or managerial occupations.
- 9** ***Long-term on-the-job training.*** This category includes occupations that generally require more than 12 months of on-the-job training or combined work experience and formal classroom instruction for workers to develop the skills needed for average job performance. This category includes formal and informal apprenticeships that may last up to 4 years and short-term intensive employer-sponsored training that workers must successfully complete. Individuals undergoing training are generally considered to be employed in the occupation. This category includes occupations in which workers may gain experience in non-work activities, such as professional athletes who gain experience through participation in athletic programs in academic institutions.
- 10** ***Moderate-term on-the-job training.*** This category includes occupations in which workers can develop the skills needed for average job performance after 1 to 12 months of combined on-the-job experience and informal training.
- 11** ***Short-term on-the-job training.*** This category covers occupations in which workers can develop the skills needed for average job performance after a short demonstration or up to one month of on-the-job experience or instruction.

Information Technology - 2005



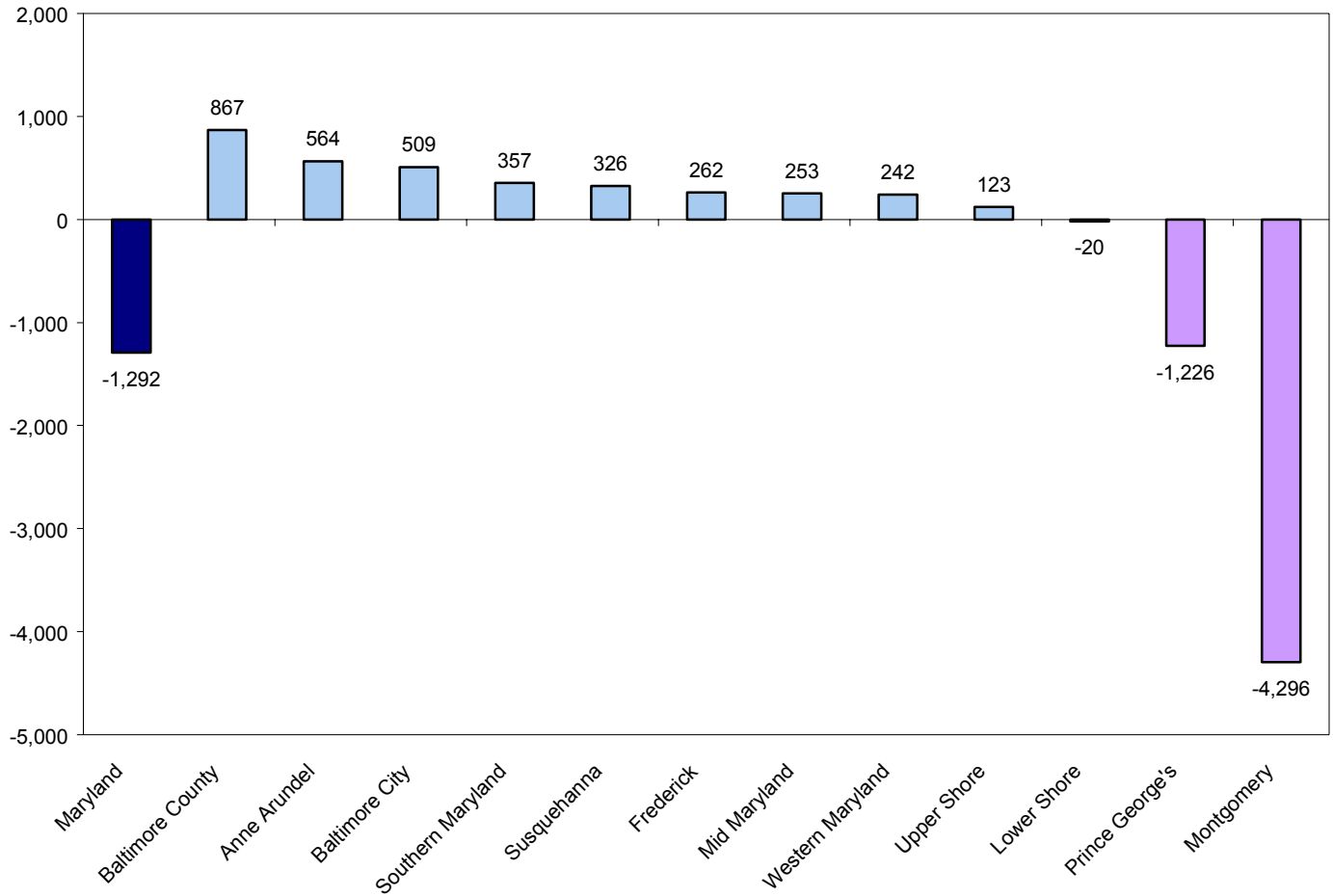
**Employment and Wages in the Information Technology Cluster
By WIA and Select Local Jurisdictions**

| WIA | Employment | | Employment Change 2002 - 2005 | Number of Reporting Units 2005 | Total Wages 2005 | Average Weekly Wage 2005 |
|--------------------------|---------------|---------------|-------------------------------------|---|------------------------|-----------------------------------|
| | 2002 | 2005 | | | | |
| Anne Arundel | 7,847 | 8,411 | 564 | 586 | \$669,736,078 | \$1,531 |
| Baltimore City | 4,483 | 4,992 | 509 | 299 | 379,995,334 | 1,464 |
| Baltimore County | 8,127 | 8,994 | 867 | 600 | 575,660,649 | 1,231 |
| Frederick | 1,647 | 1,909 | 262 | 222 | 132,305,057 | 1,333 |
| Montgomery | 35,544 | 31,248 | -4,296 | 1,856 | 2,844,853,950 | 1,751 |
| Prince George's | 14,060 | 12,834 | -1,226 | 681 | 1,013,492,915 | 1,519 |
| Lower Shore | 542 | 522 | -20 | 64 | 17,977,783 | 662 |
| Somerset | D | D | D | D | D | D |
| Wicomico | 395 | 395 | 0 | 36 | 13,702,085 | 667 |
| Worcester | D | D | D | D | D | D |
| Mid Maryland | 9,212 | 9,465 | 253 | 775 | 789,756,318 | 1,605 |
| Carroll | 574 | 663 | 89 | 147 | 36,363,350 | 1,055 |
| Howard | 8,638 | 8,802 | 164 | 628 | 753,392,968 | 1,646 |
| Southern Maryland | 2,739 | 3,096 | 357 | 215 | 198,852,998 | 1,235 |
| Calvert | 375 | 465 | 90 | 57 | 24,240,052 | 1,002 |
| Charles | 436 | 629 | 193 | 91 | 37,019,392 | 1,132 |
| St Mary's | 1,928 | 2,002 | 74 | 67 | 137,593,554 | 1,322 |
| Susquehanna | 1,076 | 1,402 | 326 | 156 | 60,384,496 | 828 |
| Cecil | 109 | 125 | 16 | 29 | 4,143,899 | 638 |
| Harford | 967 | 1,277 | 310 | 127 | 56,240,597 | 847 |
| Upper Shore | 324 | 447 | 123 | 58 | 19,442,380 | 836 |
| Caroline | D | D | D | D | D | D |
| Dorchester | D | D | D | D | D | D |
| Kent | D | D | D | D | D | D |
| Queen Anne's | 75 | 97 | 22 | 28 | 4,126,098 | 818 |
| Talbot | 116 | 213 | 97 | 19 | 11,147,684 | 1,006 |
| Western Maryland | 826 | 1,068 | 242 | 76 | 31,286,332 | 563 |
| Allegany | 67 | 70 | 3 | 8 | 1,577,123 | 433 |
| Garrett | 111 | 94 | -17 | 19 | 2,756,087 | 564 |
| Washington | 648 | 904 | 256 | 49 | 26,953,122 | 573 |
| Nondistributable* | 4,429 | 5,176 | 747 | 1,847 | 482,372,437 | 1,792 |
| Maryland | 90,856 | 89,564 | -1,292 | 7,435 | 7,216,116,727 | 1,549 |

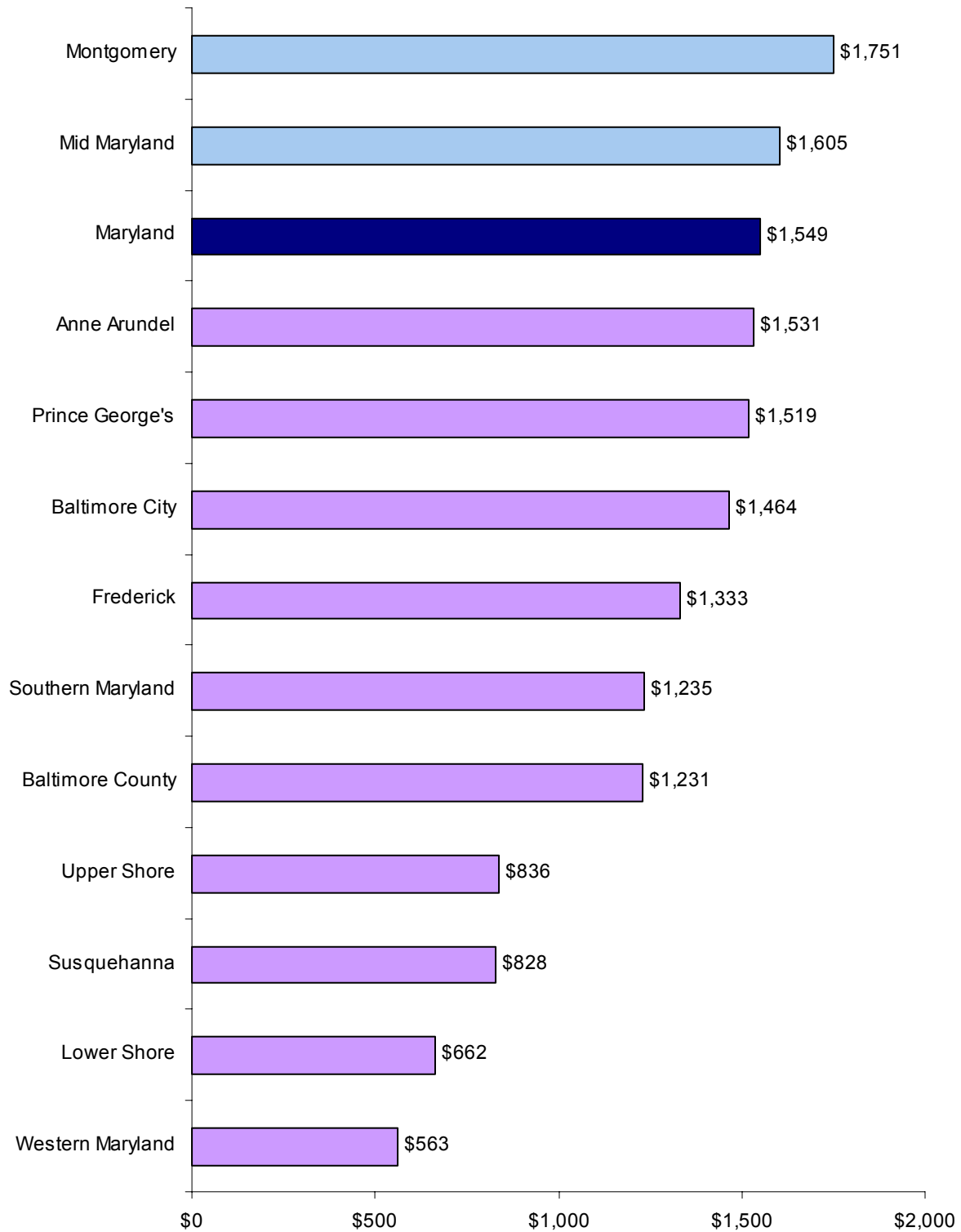
D - Data cannot be published due to disclosure.

* Includes establishments in all Information Technology Cluster NAICS industries that cannot be distributed geographically.

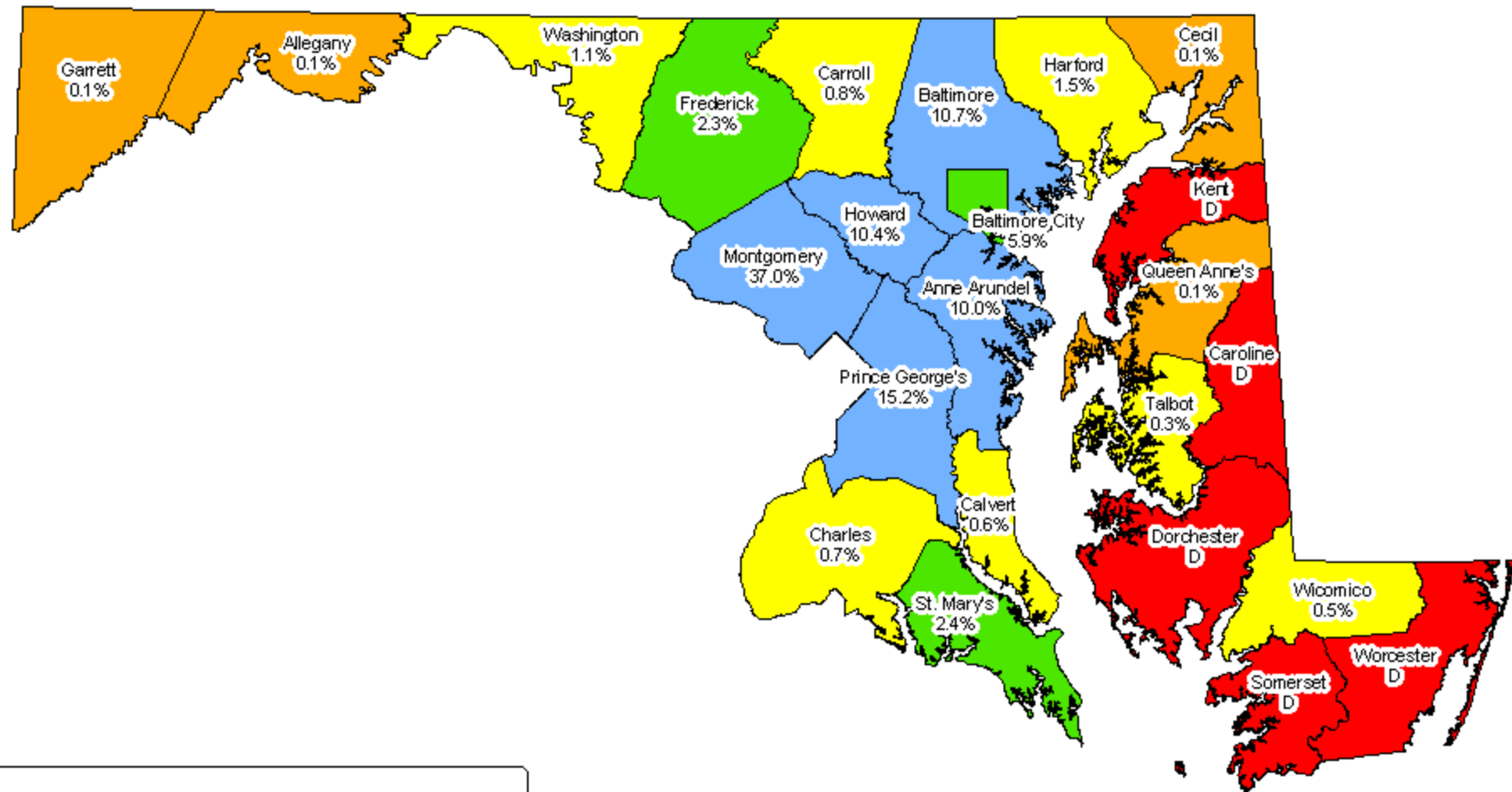
Employment Changes in the Information Technology Cluster by WIA 2002 - 2005



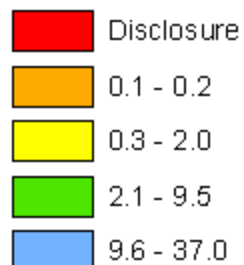
**Average Weekly Wages in the Information Technology Cluster by WIA
2005**



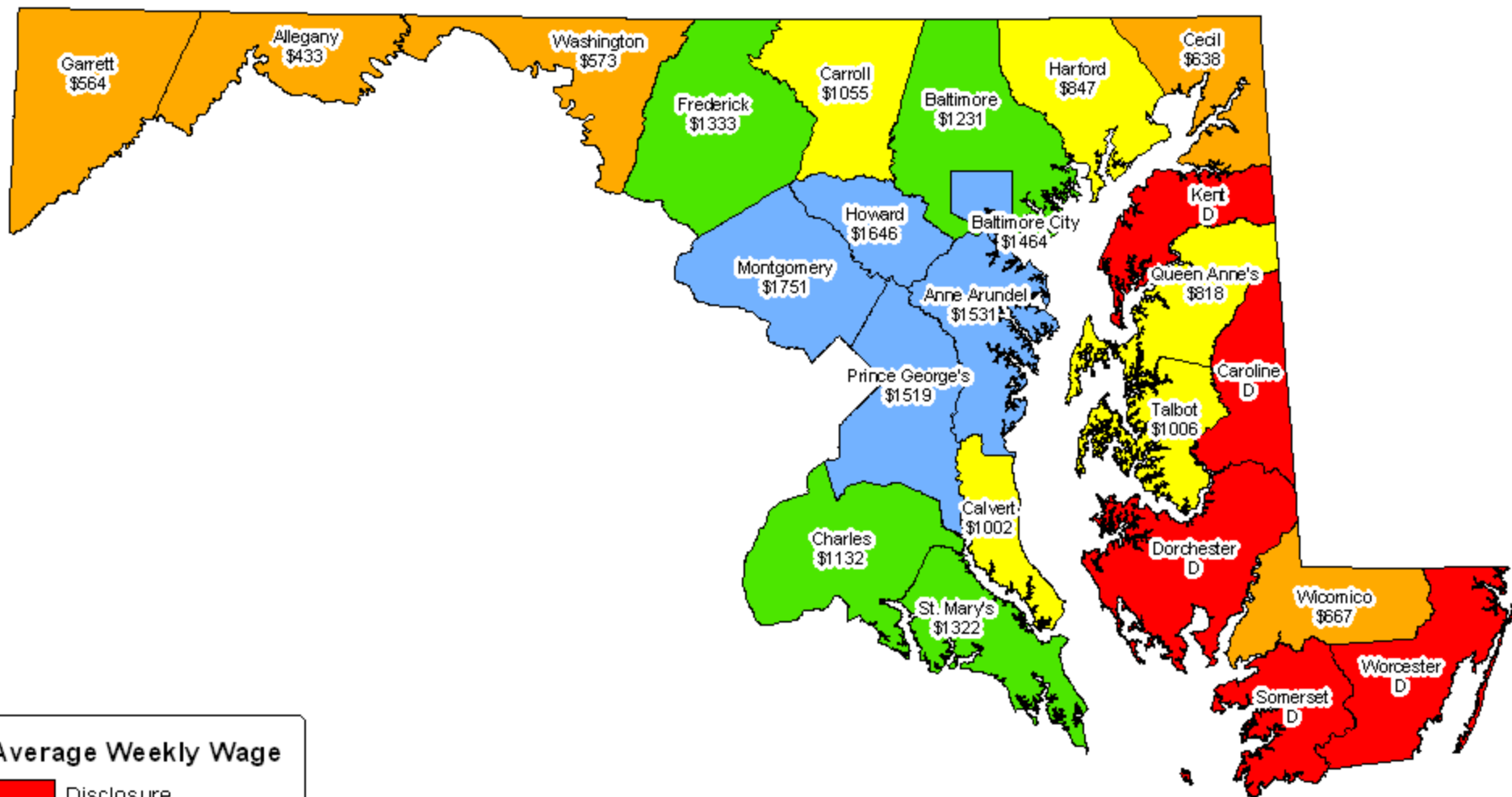
Local Share of Statewide Employment in the Information Technology Cluster 2005



Local Share of Statewide Employment



Average Weekly Wage in the Information Technology Cluster 2005



Average Weekly Wage

