



COURSE PLANNING FOR HIGH SCHOOL

A STUDENT GUIDE

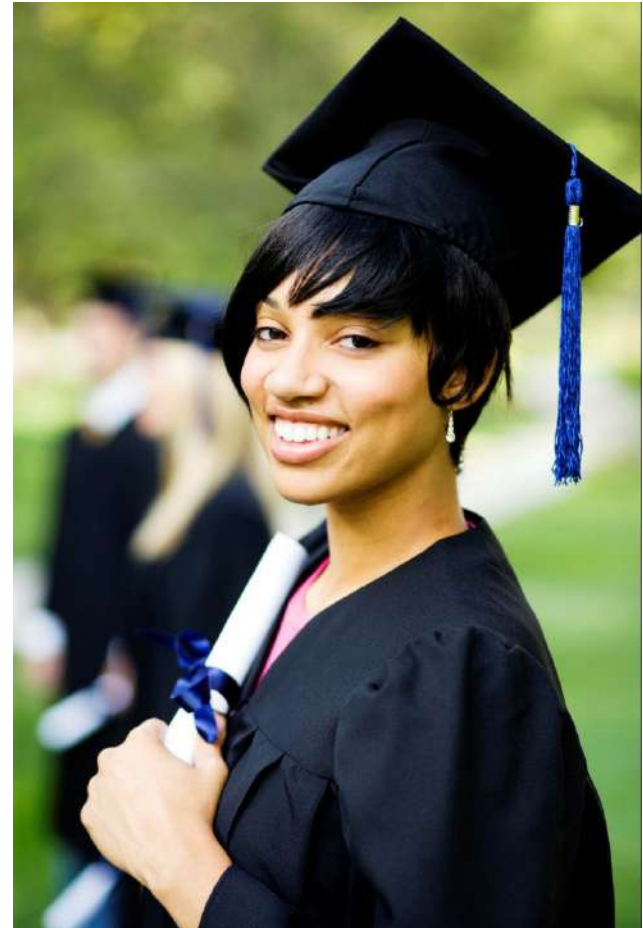


The Career Guidance Washington Lessons by OSPI are licensed under a [Creative Commons Attribution 4.0 International License](https://creativecommons.org/licenses/by/4.0/).



REACH FOR YOUR GOALS

- ▶ What are your goals for life after high school?
- ▶ What have you done to achieve those goals?
- ▶ Use high school to reach your goals.
- ▶ Plan now for college and career by registering for courses that prepare you for multiple post secondary options.



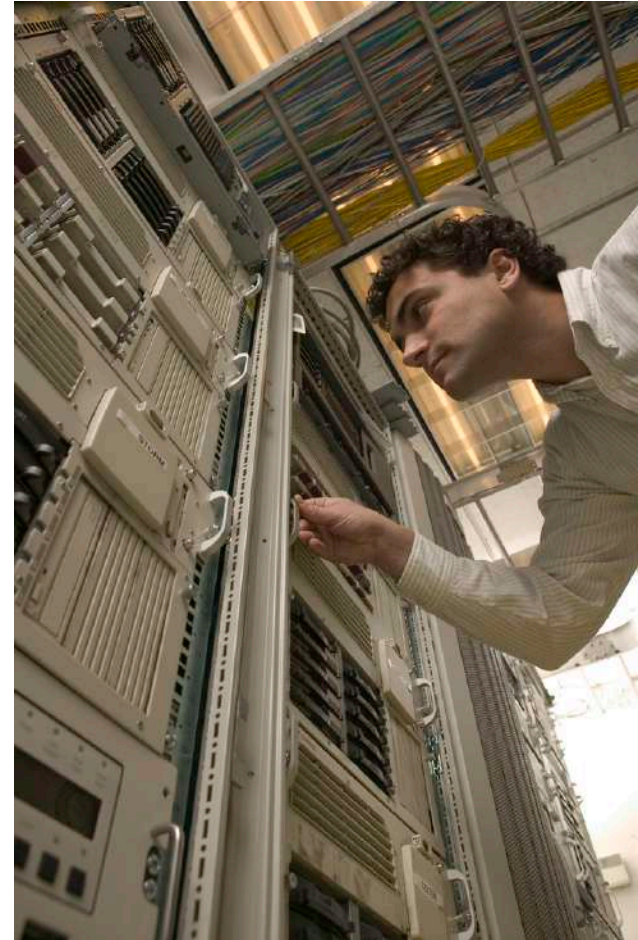
EXPLORE YOUR INTERESTS

Choose a Career Cluster

Agriculture, Food, and Natural Resources	Architecture and Construction
Arts, A/V Technology, and Communications	Business, Management, and Administration
Education and Training	Finance
Government and Public Administration	Health Science
Hospitality & Tourism	Human Services
Information Technology	Law, Public Safety, Corrections & Security
Manufacturing	Marketing
Science, Technology, Engineering & Mathematics	Transportation, Distribution, and Logistics

CHOOSE CAREERS TO EXPLORE

- ▶ Research different careers:
 - WA Career Bridge
 - Career interviews
 - Job shadows, internships
- ▶ Learn about the postsecondary education you need
- ▶ Plan the courses you need to prepare
- ▶ Take the most advanced courses possible



WHAT EDUCATION WILL YOU NEED?

- ▶ Learn what education you will need after high school:
 - No education after high school (will limit what you can do)
 - Apprenticeship
 - 6 month-1 year certificate
 - Two-year AA/AS degree
 - Four-year BA/BS degree
 - Postgraduate degree (MD, JD, MBA...)



WHICH COURSES TO TAKE?

- ▶ The courses you take will help set your future
- ▶ Research careers and postsecondary programs
- ▶ Then update your course plan
- ▶ HS classes should meet:
 - High school graduation requirements
 - Postsecondary admission requirements for 2-year and/or 4-year colleges



GRADUATION REQUIREMENTS

Check these sites for the most up-to-date information

The Washington State Board of Education

<http://www.sbe.wa.gov/documents/GradRequirements/GradReqVisualsAug2014.pdf>

Minimum requirements for Washington State

<http://www.sbe.wa.gov/HSBeyondPlan.php#.V3084eT2ZaQ>

Personalized Pathway Requirement based on High School & Beyond Plan

OSPI

www.k12.wa.us/graduationrequirements/

Graduation Requirements and High School and Beyond Plan Information, Including

www.k12.wa.us/graduationrequirements/GraduationToolkit.aspx

Graduation Toolkit

*Personalized Pathway Requirement are related courses that lead to a specific post high school career or educational outcome chosen by the student based on the student's interests and High School and Beyond Plan, that may include Career and Technical Education. ****State Board of Education:** www.sbe.wa.gov



SET A COURSE PLAN

- ▶ Find classes to prepare for your postsecondary and career goals
- ▶ Choose the most rigorous courses you can
 - Advanced courses (honors, other rigorous courses)
 - Career & Technical Education courses (career prep)
 - Dual credit courses (AP, IB, College in High School, Running Start, Tech Prep)



ADVANCED COURSES

- ▶ Take as many years of math and science as possible
- ▶ Take honors, AP, IB, College in HS classes that cover advanced material
- ▶ Take electives that let you build skills (orchestra, band, art, metalworking, etc.)



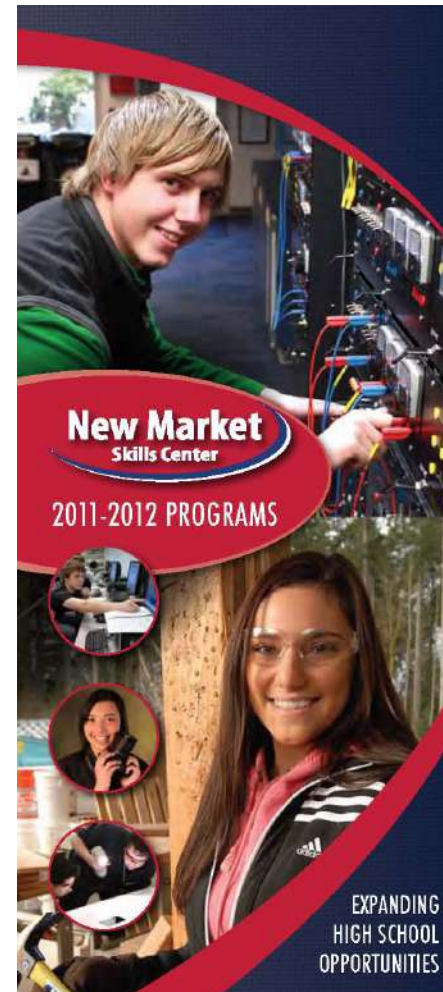
CAREER PREP (CTE) CLASSES

- ▶ Preparation for career & postsecondary options
- ▶ Personalized Pathway Requirement
- ▶ High academic standards
- ▶ Emerging fields, including:
 - Health Sciences
 - Science, Technology, Engineering & Math (STEM)
 - Construction



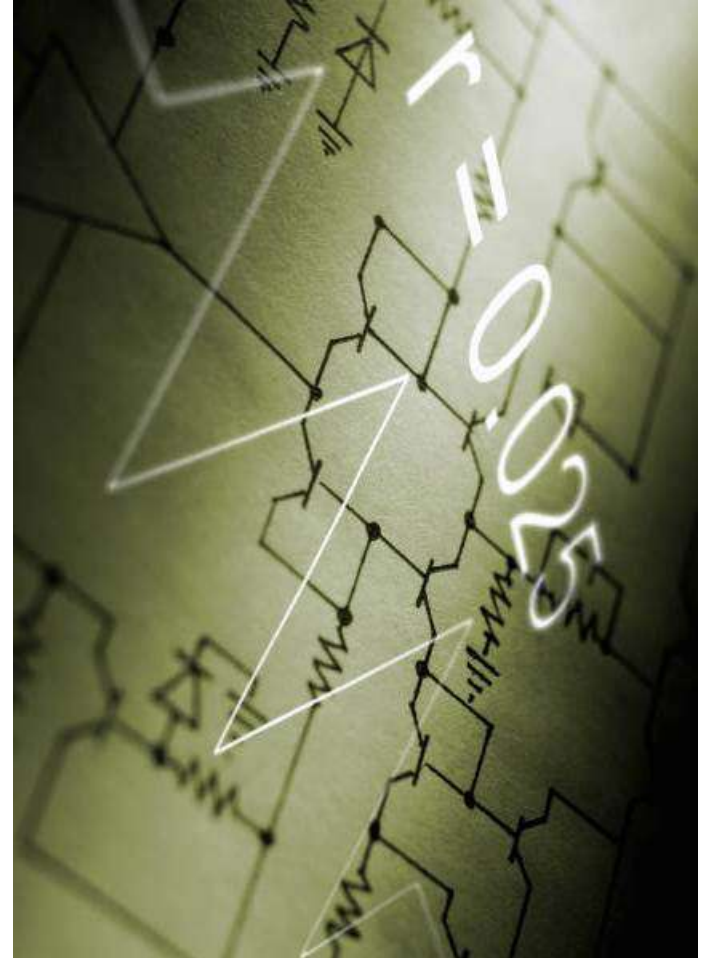
CTE SKILLS CENTERS

- ▶ Regional high schools for CTE classes
- ▶ Attend regular high school half day, Skills Center half day
- ▶ Skills Center programs may include:
 - Computer programming
 - Firefighting
 - Audio Production
 - Culinary Arts
 - Health Care
 - Construction
 - Marketing



CTE – STEM

- ▶ STEM = Science, Technology, Engineering and Mathematics
- ▶ Includes Biotechnology, Agriculture Technology, Nanotechnology, several areas of Engineering, and other technologies
- ▶ STEM helps students USE science, technology and math to solve real world problems



DUAL CREDIT PROGRAMS

- ▶ Some courses give high school AND college credit
- ▶ Courses may be at your high school or community college
- ▶ Dual Credit includes courses in AP, IB, College in High School, Running Start, and Tech Prep



DUAL CREDIT: AP

- ▶ Advanced Placement (AP) courses can help you earn college credit in high school
- ▶ End-of-year exam score determines college credit
- ▶ Some AP courses pair with CTE classes:
 - Computer Programming
 - Commercial Art/Studio Art
 - Environmental Science



DUAL CREDIT: COLLEGE IN THE HIGH SCHOOL

- ▶ Students take college level courses in high school
- ▶ School Districts must have inter-local agreements with colleges set up
- ▶ College in HS courses are taught by high school teachers on the high school campus for college credit



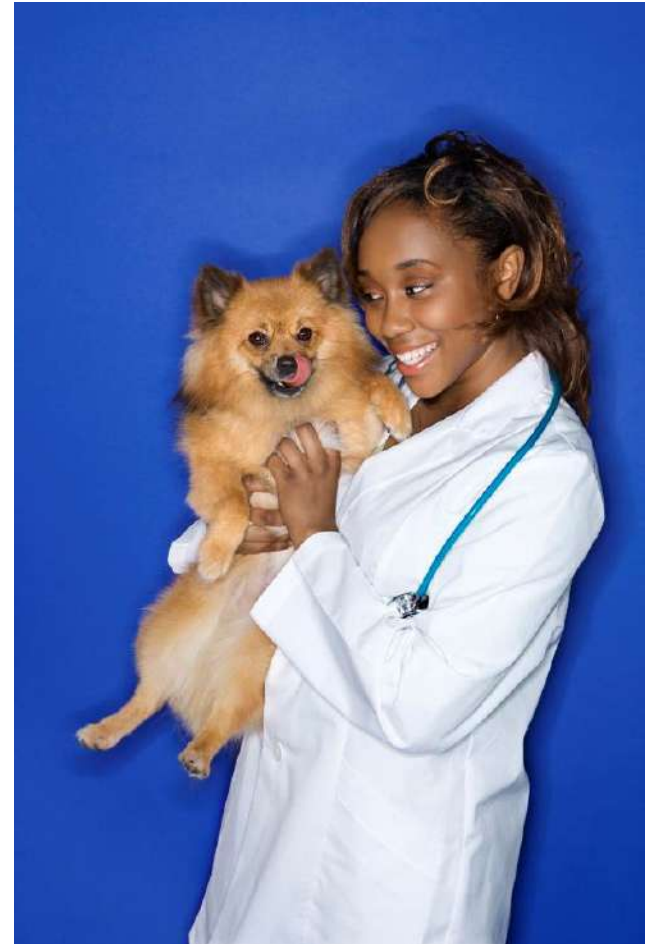
DUAL CREDIT: RUNNING START

- ▶ Take courses at community college while you're a high school student
- ▶ Placement test must be passed to qualify
- ▶ Nearly any subject is available (100+ College Level)
- ▶ Prepare for college or a career
- ▶ Talk with your high school counselor for more information



DUAL CREDIT: TECH PREP

- ▶ Tech Prep courses can help you earn college credit in high school
- ▶ Articulations needed for HS/College
- ▶ Prepare for an apprenticeship or save college tuition
- ▶ Courses may include:
 - Horticulture
 - Environmental Science
 - Automotive Technology
 - Digital Communications
 - Accounting/Business
 - Health Science
 - Veterinary Medicine



WHAT'S NEXT?

- ▶ Set a plan for high school
 - ▶ Start High School & Beyond Plan
 - ▶ Consider what courses will be in Personalized Pathway Requirement
- ▶ Decide which courses you need for:
 - Graduation requirements
 - Postsecondary admission requirements
- ▶ Ask about advanced, CTE, and dual credit classes
- ▶ Join clubs and participate in sports

COURSE PLAN FOR NEXT YEAR

SUBJECT AREA	SEMESTER 1	SEMESTER 2
ENGLISH		
MATHEMATICS		
SCIENCE		
SOCIAL STUDIES		
CAREER AND TECH ED		
HEALTH and FITNESS		
ARTS		
HEALTH and Fitness		
General Electives		
World Languages (or) PPR		